

**The Economic Base of Idaho:
A Regional Analysis**

by

Dr. Roger Coupal

Department of Agricultural Economics
and Rural Sociology

A. E. Extension Series No. 97-04
May 28, 1997

1900

1901

1902

1903

1904

1905

1906

The Economic Base of Idaho: A Regional Analysis

By

Dr. Roger H. Coupal

***Dept. of Agricultural Economic and Rural Sociology
University of Idaho
Moscow, Idaho***

May 28, 1997

The following is a list of the names of the persons who have been appointed to the various positions in the organization of the American Society of International Law.

1914

President: Mr. J. H. Moore

The following is a list of the names of the persons who have been appointed to the various positions in the organization of the American Society of International Law.

1915

THE ECONOMIC BASE OF IDAHO: A Regional Analysis, 1993

Introduction

The analysis presented here is a brief description of the economic base for the State of Idaho and its four industries. Idaho's economy has consistently been one of fastest growing economies in the United States over the last several years (Santos, 1997). Per capita personal income for the state, which is approximately 84 percent of the national average, has been growing at a real rate of about 2.1 percent per year for the last ten years, slightly higher than the nation as a whole (1.8 percent), Figure 1. The bottom panel shows a growth in real personal income higher than that of the nation through-out the 70' s, a reversal in the eighties, and what appears to be a reversal again in the nineties.

Trends in both gross state product (Figure 2) and jobs (Figure 3) suggest a diversifying economy. The growth has come primarily in the area of trade, services, and manufacturing. By far the fastest growing part of the economy are the fledgling high technology industries. From a small beginning, those sectors had grown to 1.5 % of the gross state product in 1992 and during the 5 years before 1992, they grew at an annual rate over 50% faster than the Idaho economy as a whole.

Annual growth in total jobs was 3.7 percent per year from 1983 to 1993, a rate slightly below the growth experienced in the 1970's. As a proportion of total jobs, government, agriculture, and mining has given way to growth in manufacturing, trade, and services (Figure 3).

Figure 1. Real Per Capita Personal Income, 1969-93

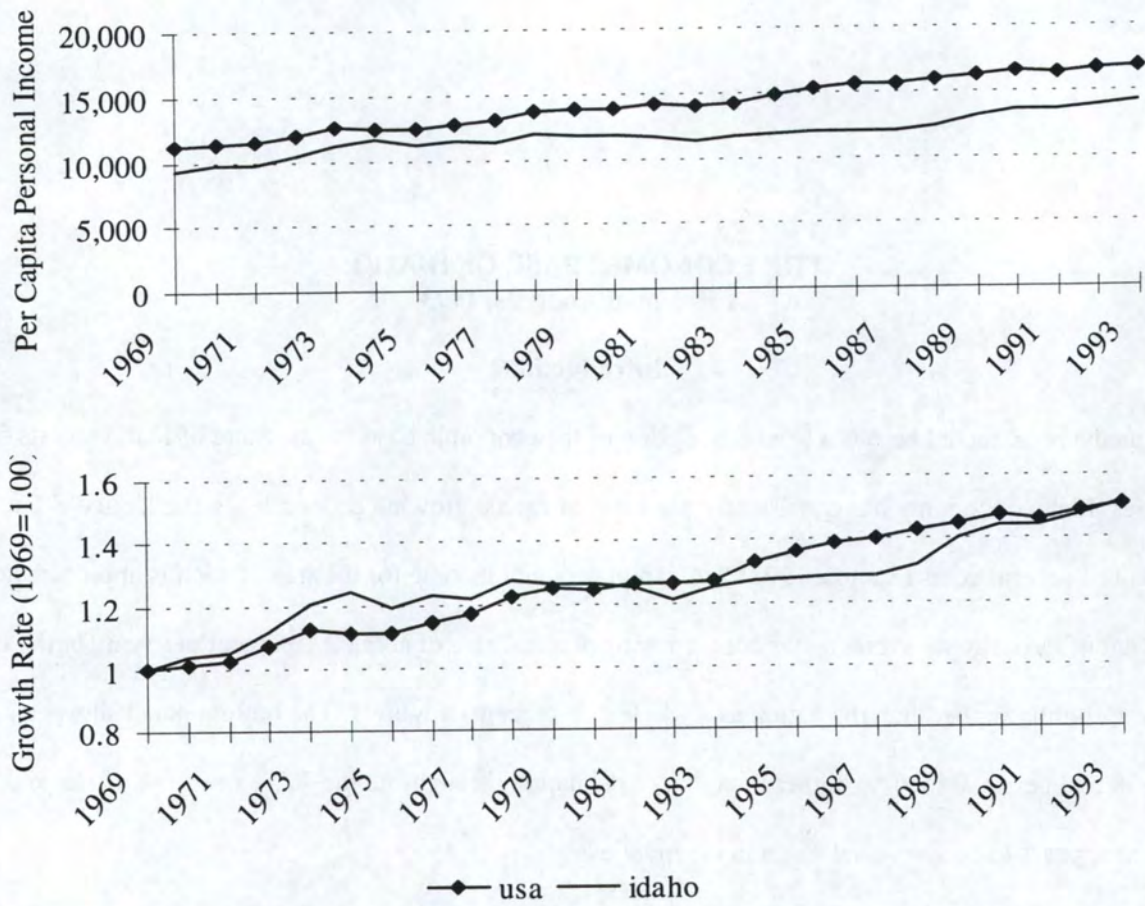
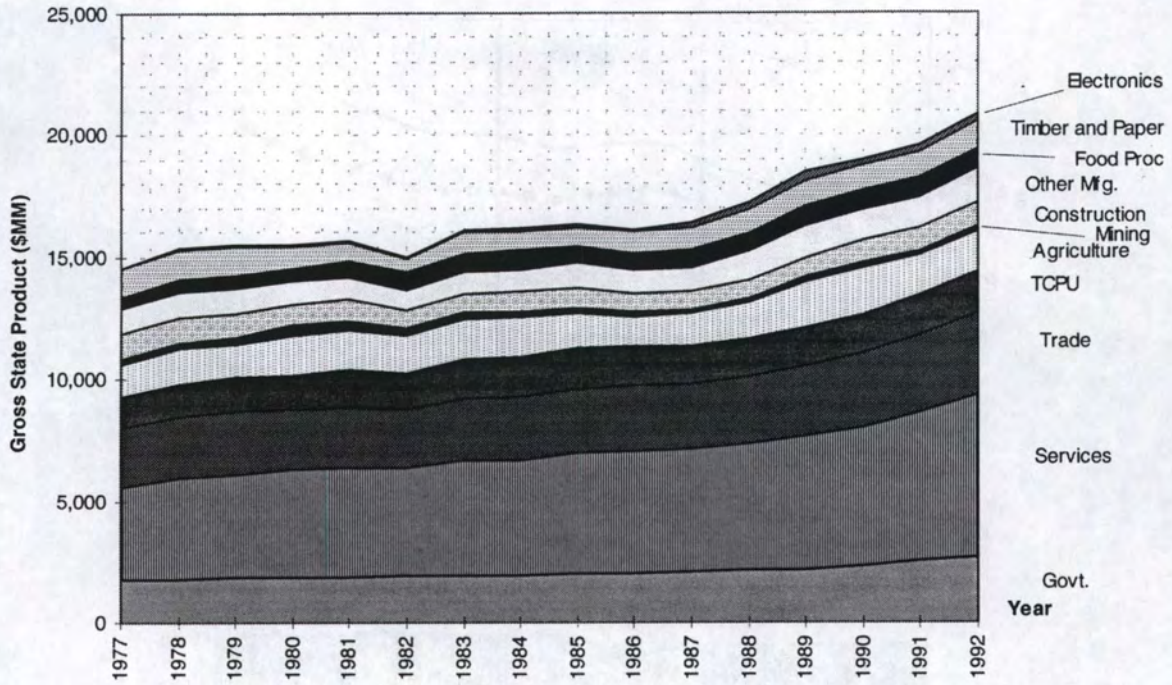
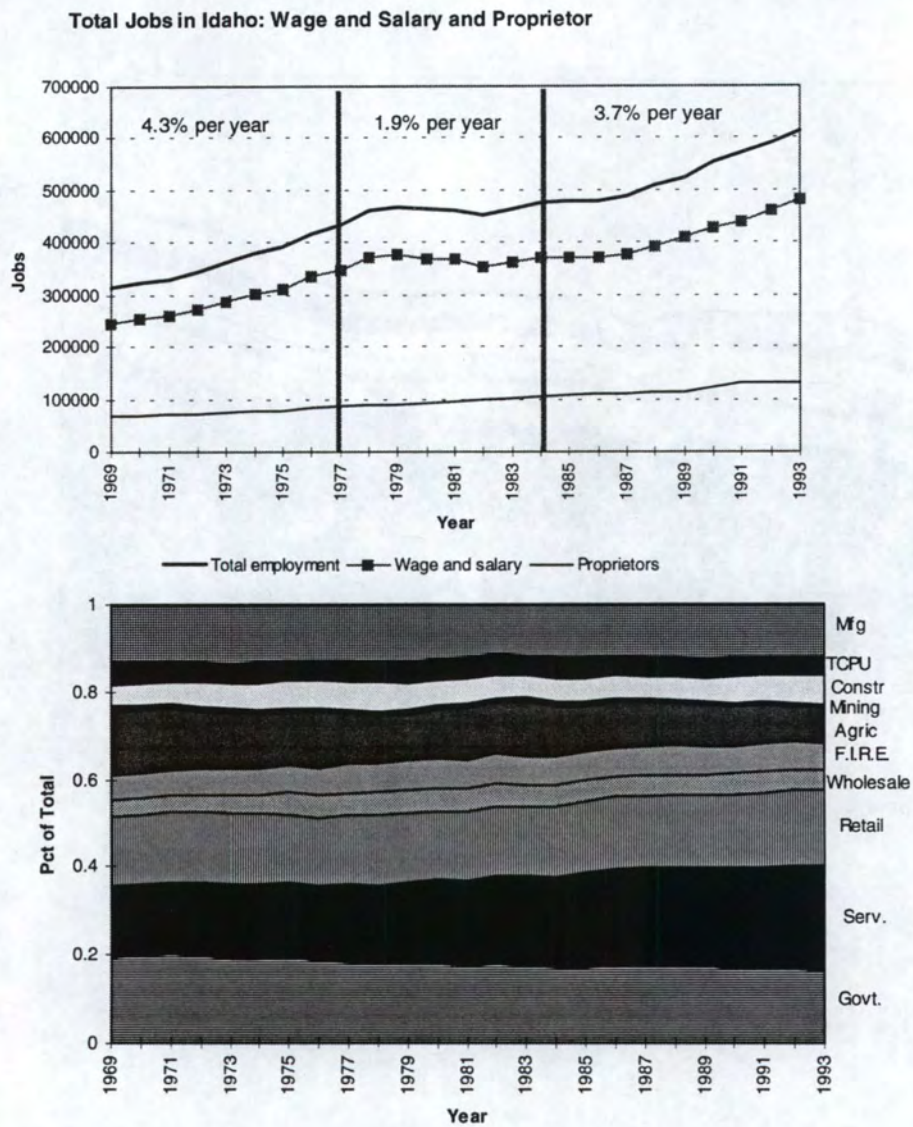


Figure 2. Trends in Real Gross State Product 1977-92 (1992=100)



Source: REIS Gross State Product Series

Figure 3. Job Growth in Idaho and Contribution by Sector, 1969-93



Source: REIS

A Description of the Economic Base

The growth that has occurred in Idaho over the past ten years has given cause to re-evaluate the economic base of Idaho. The last study, by Robison, et al (1991) presented a picture of the Idaho economy heavily dependent upon its natural resource base. While there is no doubt about the continued importance of the resource-based industries in the State, the question that this report addresses is an evaluation of those industries and newer industries, in light of the growth we have seen since that study. This study though will *not* be a comparative analysis of the economy of 1987 and 1993. Methodological differences between the two studies cloud interpretation of such a study and would have to be approached much more in depth than can be done in this paper.

Methodology

The brief picture presented above indicates where jobs are being secured and whether they are increasing or decreasing, but they do not address the sources of growth in the economy. Growth or decline in a sector could be the result of changes in the industry' s exports or the result of re-spending effects from changes in exports in other sectors. Jobs and income in many of those sectors described above (especially trade, services, and government) are more the result of indirect expenditures from basic activities than as a source of export activity.

In understanding the economic base of Idaho it is important to keep in mind some concepts about economic base. The economic base concept puts a state economy into the following framework: Economic activity is to a large extent driven by dollars flowing in to a region from outside of the region, and accounting for imports, national taxes, transfers, and returns to ownership by non-residents. The sources of inflows are from commodity exports, exports of services, tourism, non-resident shoppers, government transfers, and non-work income transfers. These dollars may be from exports of farm products, processed food, high technology, tourism, or federal government commitments, but they all provide the "base" from which re-spending on regional goods and services take place.

Raw employment or income data for a particular industry includes a part of the industry' s function as an export base but also as a recipient of re-spending in the role of a non-basic or supportive industry. For example, when agriculture sells to markets outside the state it is functioning as part of the states' economic base. It brings in dollars in from the sale of products

outside. But when it sells output to a food processing facility in the state, which then sells abroad, that part of agriculture is functioning as a non-basic or supportive industry to another part of the state's economic base, in this case food processing. The same is true for other industries. Trade and services sell to non-residents in their capacity as a part of the export base of this state but also sell to residents in their capacities as supportive industries. High technology, for the most part exports its products outside the state, but when it sells components to other regional firms or to state and local governments, it is playing the role of a supportive industry. The examples can be extended into most other sectors of the economy.

The incomes for households that these industries provide are re-spent regionally, which provide jobs and income for supportive industries. Goods and services that cannot be found regionally are provided by imports. Households and firms all pay taxes which provide revenues for state and local government services, and the jobs that come with them.

The role of government as part of our economic base is primarily from expenditures of federal government operations. The Forest Service, BLM, INEL, Mountain Home Airforce Base, all provide jobs and income in Idaho financed by taxpayers from all around the country. Through the purchases of supplies, the management and sale of natural resources, and direct employment they also generate re-spending in the state among our supportive industries.

The analysis begins by developing a complete set of regional accounts that represent economic inflows and outflows for an economy, in this case one set of accounts for each region and the state as a whole. Figure 4 provides a schematic description of the structure of the accounts. Moving across the rows industries sell to other industries, households, resident and non-resident institutions, and exports. Resident institutions would include state and local governments and a portion of investment such as residential construction and some business investment. Non-residential institutions include the federal government and corporate borrowing from large firms. The economic base approach used in this analysis assumes that the income flows from all accounts except federal government and exports (current account) are endogenous, (separated by a double line). A SAM for the State, but with industries aggregated to one industry for display purposes is provided in the Appendix of this document.

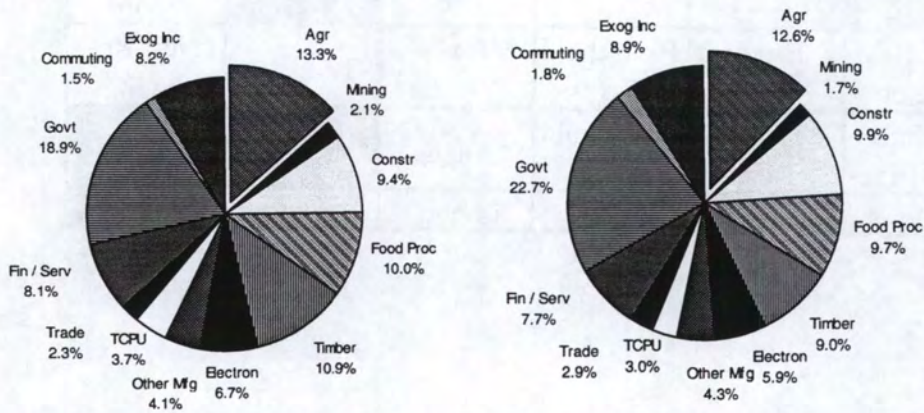
Figure 4. Schematic Diagram of a Social Accounting Matrix

	Industries	Factors	Househlds	Resident Institutions	Non-Resident Institutions	Exports
Industries	IxI		Final Demand	Final Demand	Exog. Final Demand	Exports
Factors	Factor Pmts					
Househlds		Factor Income		Transfers		Non-Res Income
Resident Institutions	Ind. Bus Taxes	Factor Taxes	Household Taxes	Taxes/Transfers	Transfers	Non-Res Savings
Non-Resident Institutions	Indirect Bus. Taxes	Factor Taxes	Household Taxes	Taxes		
Imports	Imports		Imports	Imports	Imports	

The Economic Base of Idaho

Overall the economy of Idaho remains highly dependent upon our natural resources. A complete picture of the economic base at the State level is measured combining direct and secondary linkages, Figure 5. Government accounts for the largest single part of the Idaho economy, with 20% of the regional income and 22 percent of employment. Government includes federal government purchases, transfers to households, federal government expenditures and grants to INEEL and the regions Universities, and management costs of land management agencies. The resource - extractive sectors (Agriculture, mining, food processing, and timber) collectively account for over 35 percent of Idaho's gross state product and 33 percent of employment. Trade and services contribute 8 percent to the gross state product and 7 percent of all jobs. While a portion of this base is due to business travelers on purchases from non-residents, much of it is due to tourism. When one includes all resource-related industries (extractive and non-extractive), almost 66 percent of Idaho's economy is dependent upon natural resources.

Figure 5. Economic Base of Idaho, 1993



Contribution to Gross State Product, State of Idaho

Contribution to Total Jobs, State of Idaho

Agr	- Production Agric. Ag Serv.
Mining	- Mining
Constr	- Construction
Food Proc	- Food Processing
Timber	- Timber and Wood Products
Electron	- Electronics
Other Mfg	- Other Mfg

TCPU	- Transport, Communic., Publ. Util.
Trade	- Wholesale and Retail Trade
Fin / Serv	- Finance and Services
Govt	- Federal Govt., State and Local Govt enterprise exports
Commuting	- In - Commuting
Exog Inc.	- Exogenous income and borrowing

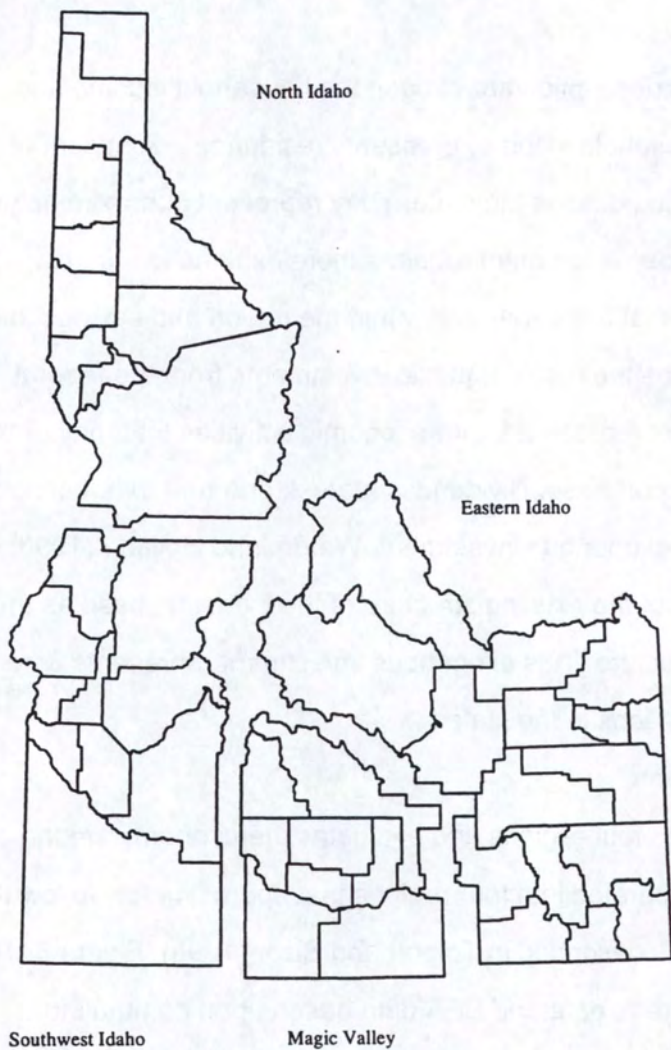
The electronics industries contribute 7 percent to gross state product, and will most likely outpace much of the state's resource-based industries in its growth. Other manufacturing and chemicals contribute another 5 percent.

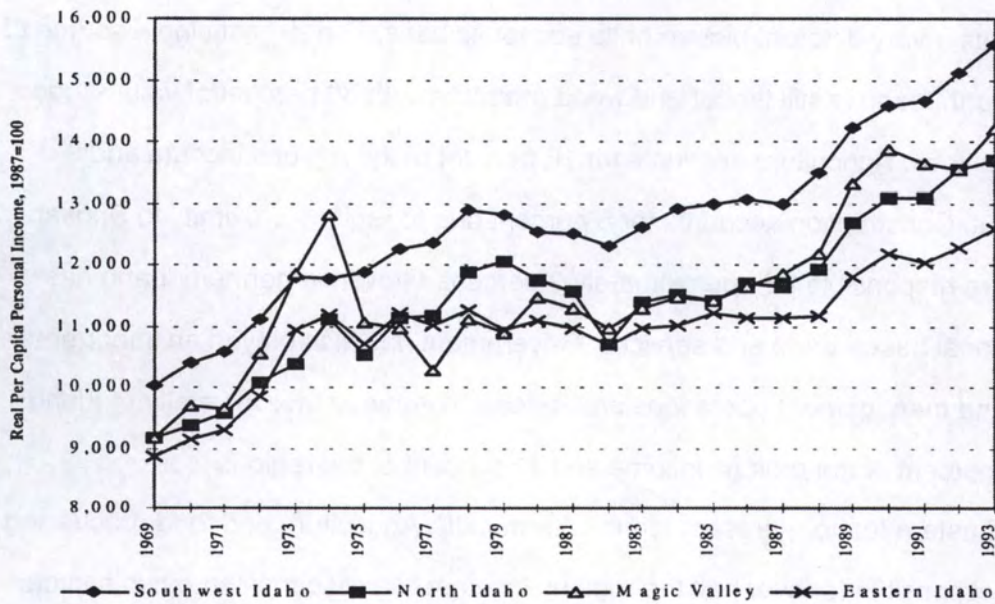
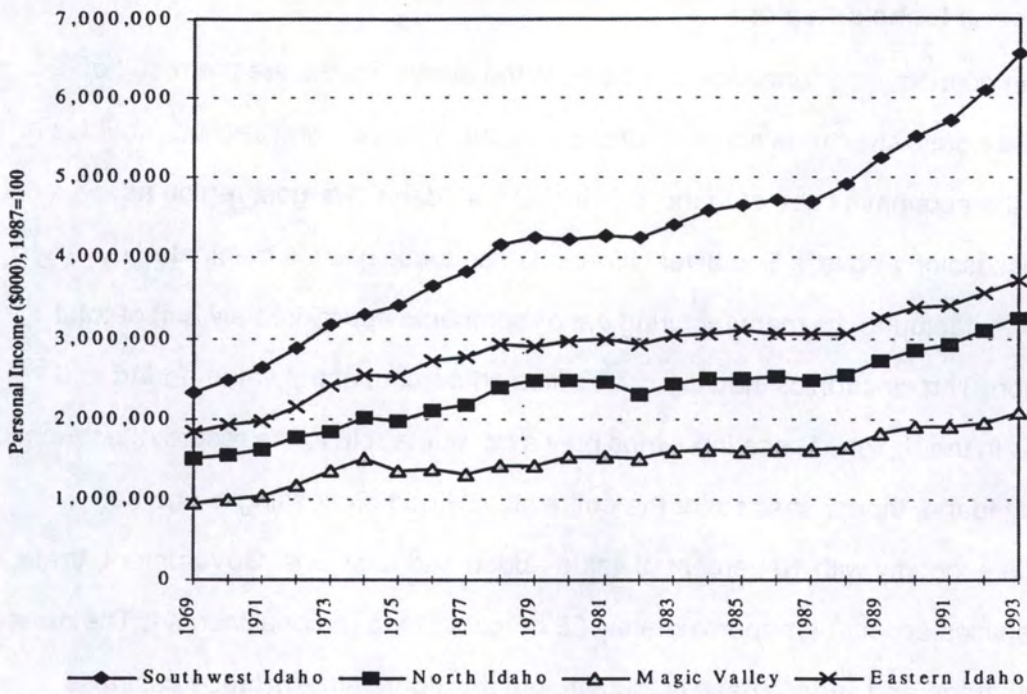
Two other categories included in this description are exogenous household income and exogenous investment. Exogenous household income represents residence adjustment of households living in Idaho and commuting outside the state. They represent approximately one percent to the Idaho economy. Exogenous investment requires more explanation. Investment that occurs in a region comes from savings that are generated within the region and savings that come from outside the region. The latter can be the result of public investments from the federal government and private investments that represent future economic activities that may or may not have anything to do with the existing export base. Dividends, interest, and rent to households from outside the region are also a source of exogenous investment, Waters and Holland (1996). These activities are then are not so much part of the existing structure of the industrial base as they are indications of future changes in that structure. This exogenous investment represents 8 percent of the gross state product and 9 percent of jobs in the state.

The Economic Base of Idaho's Regions

The next section divides the State into four regions and evaluates the economy among each of the regions individually. The State is separated into four regions that approximately follow the boundaries of functional economic areas described in Tolbert and Sizer (1996), Figure 6. The areas were developed from Census Bureau data and BEA data based upon commuting information. Southwest Idaho, with the State Capitol and the only SMSA has seen the largest growth across all regions. Southwest Idaho population has grown from about a third of the state population in 1969 to over 42 percent in 1993. Personal income in Southwest Idaho has out-paced the other regions at a rate of 4.8 percent per year in real terms between 1983 and 1993. Northern Idaho grew at the same period at an average annual rate of 3.3 percent, with Magic Valley and Eastern Idaho experienced 3.06 and 2.25 average annual percent respectively. Southwest Idaho has always been the largest region in the Idaho economy, but since 1987 its share of state personal income has grown substantially. The growth in personal income exhibited by Southwest Idaho came about not only as a result of an increasing population, but also because of higher earnings, Figure 7. Northern and Eastern Idaho have experienced steady but smaller growth rates, while the Magic Valley has experienced some variability.

Figure 6. Functional Economic Areas of Idaho





The Economic Base of Idaho's Regions

The differences in economic performance illustrated in the above figures are the result of distinctly different economic structures across Idaho's regions. The following section provides a brief description of the economic base of Idaho's four regions. Idaho's largest region as suggested in the discussion above is Southwest Idaho. Its economic base is dominated by government and manufacturing. Its manufacturing base represents approximately half of total income for the region. The electronics industry contributes 16 percent of the value-added and 14 percent of total jobs in the region. These industries play a dominant role in the record of economic growth of southwest Idaho, though less so for the entire state. Food processing is another important part of the economy with 10 percent of value-added and total jobs. Government, trade, and finance and services account for approximately 28 percent of the regional income. The most important part of the trade and service base is tourism, but this figure also includes business services and non-tourist travelers.

North Idaho presents a very different picture of its economic base. The largest single source of jobs and income in North Idaho is still timber and wood products, with 36 percent of value-added and 30 percent of total jobs. Agriculture accounts for 10 percent of the regions income and 9 percent of its total jobs. Construction accounts for 8 percent due to regions proximity to Spokane. Trade and services are responsible for approximately 9 percent. Growth in northern Idaho has been in its non-traditional base - trade and services. Government has also played an important role, in the regions land management operations and research grants to the University of Idaho, responsible for 13.5 percent of the regions income and 17 percent of the regions jobs.

Magic Valley and Eastern Idaho represent Idaho's "farm belt". Agriculture and food processing in Magic Valley are responsible for over half the regions income. Likewise the same two sectors account for almost 25 percent in Eastern Idaho. Government is an important base in Eastern Idaho, being responsible for 20 percent of Eastern Idaho's value-added and 23 percent of total jobs. The basic parts of government in that region are the Federal agencies, Idaho National Engineering and Environmental Laboratory (INEEL), and Idaho State University.

Eastern Idaho's economy, while highly dependent upon its traditional economic bases, is also dependent upon tourism. Trade and services sectors account for approximately 17 percent of the regions income and jobs, of which a substantial portion is tourism. Eastern Idaho is destination

choice for tourists both for the natural resources that are in the region as well as its proximity to Teton and Yellowstone National Parks. Professional services also play a role in the region associated with INEEL and the University.

Table 1. Economic Base of Idaho's Regions

Sector	Southwest Idaho	North Idaho	Magic Valley	Eastern Idaho
	Gross Regional Income			
Agr	6.5%	10.1%	29.0%	22.5%
Mining	0.6%	3.3%	1.1%	4.1%
Constr	11.7%	8.2%	7.8%	6.8%
Food Proc	10.0%	1.4%	26.7%	1.8%
Timber	6.9%	35.9%	1.7%	0.4%
Electronics	16.4%	0.3%	0.0%	0.9%
Other Mfg	4.3%	4.4%	2.8%	4.3%
TCPU	4.5%	2.8%	2.7%	5.7%
Trade	3.1%	3.5%	2.9%	1.3%
Fin/Serv	9.4%	5.4%	5.9%	15.7%
Govt	16.3%	13.5%	10.5%	20.0%
Commuting	2.4%	1.5%	1.4%	2.6%
Exog Inc	8.0%	9.5%	7.5%	13.9%
Total	100.0%	100.0%	100.0%	100.0%
	Total Jobs			
Agr	6.8%	9.2%	27.5%	20.1%
Mining	0.5%	2.6%	0.8%	3.0%
Constr	12.1%	9.2%	8.4%	6.9%
Food Proc	9.9%	1.3%	24.5%	1.6%
Timber	5.8%	29.3%	1.5%	0.3%
Electron	14.1%	0.4%	0.0%	0.7%
Other Mfg	4.6%	4.7%	3.0%	3.7%
TCPU	3.6%	2.5%	2.3%	4.1%
Trade	3.5%	5.1%	3.6%	1.6%
Fin/Serv	9.4%	5.3%	5.4%	15.6%
Govt	18.4%	17.1%	12.7%	23.4%
Commuting	2.8%	2.0%	1.7%	3.2%
Exog Inc	8.7%	11.4%	8.6%	15.7%
Total	100.0%	100.0%	100.0%	100.0%

The description presented above of Idaho's economic regions imply some important issues with regard to relative regional growth and specialization. The following analysis takes a closer view of the degree to regional specialization that actually exists. The economic base picture presented for the entire State, masks a significant amount of regional specialization. For example, Idaho's electronics industry which contributes approximately 7 percent to the State's value-added, is located mostly in Southwest Idaho. Approximately 96 percent of the electronics base comes from Southwest Idaho, Table 2. Seventy percent of the State's timber and wood products base resides in North Idaho, and almost 50 percent of the State's retail and wholesale trade base is also in Southwest Idaho. Food processing is divided between the Magic Valley and Southwest Idaho. Agriculture is also highly regionally specialized, 84 percent of the regions production agriculture base resides in Southern Idaho. Eastern Idaho has almost 40 percent of that base. Magic Valley is resident to 26 percent.

Finally the total regional contribution to State value-added is also presented, Table 2. Southwest Idaho contributes 43 percent of the economic base of the State across all its basic sectors. This is approximately the same proportion of population base for the region. Eastern Idaho contributes 23 percent, North Idaho contributes 21 percent, and Magic Valley contributes 13 percent.

Table 2. Economic Importance and Regional Source of Idaho's Regional Income and Jobs.

Economic Contribution and Regional Source of Gross State Product
Regional Source of Statewide Base (Pct.)

	Southwest Idaho	North Idaho	Magic Valley	Eastern Idaho	Baseline Contrib (\$MM)	Pct of Total by Base
Agr	19%	16%	26%	39%	3,102.48	13%
Mining	12%	34%	7%	47%	485.10	2%
Constr	53%	18%	11%	17%	2,165.46	9%
Food Proc	50%	4%	41%	5%	2,327.02	10%
Timber	27%	70%	2%	1%	2,531.95	11%
Electron	96%	1%	0%	3%	1,547.05	7%
Other Mfg	47%	24%	9%	21%	961.76	4%
TCPU	45%	14%	8%	33%	852.68	4%
Trade	49%	27%	13%	11%	534.69	2%
Fin/Serv	43%	12%	8%	37%	1,890.55	8%
Govt	44%	18%	9%	30%	4,388.38	19%
Commuting	47%	15%	8%	30%	336.81	1%
Exog Inc	35%	21%	10%	34%	1,886.10	8%
Regional Contrib to GSP	43%	21%	13%	23%	23,010.03	100%

Economic Contribution and Regional Source of Total Jobs
Regional Incidence of Statewide Base (Pct.)

	Southwest Idaho	North Idaho	Magic Valley	Eastern Idaho	Baseline Contrib (Jobs)	Pct of Total by Base
Agr	21%	15%	27%	38%	78,533	13%
Mining	12%	35%	7%	47%	10,385	2%
Constr	51%	20%	12%	18%	61,442	10%
Food Proc	50%	3%	41%	5%	60,672	10%
Timber	27%	70%	2%	1%	55,984	9%
Electron	96%	1%	0%	3%	36,575	6%
Other Mfg	48%	24%	9%	18%	26,711	4%
TCPU	44%	15%	9%	31%	18,813	3%
Trade	42%	31%	15%	12%	18,345	3%
Fin/Serv	43%	12%	8%	38%	47,800	8%
Govt	40%	19%	9%	31%	141,617	23%
Commuting	44%	16%	9%	31%	11,056	2%
Exog Inc	32%	22%	11%	36%	55,686	9%
Regional Contrib to GSP	42%	21%	14%	24%	623,618	100%

Conclusions

Idaho's economy remains very dependent upon natural resources. Thirty-five percent of Idaho's gross state product comes from resource extractive industries and another thirty percent from non-extractive industries. Idaho's fledgling high technology industries represent the fastest growing part of the economy and contribute about 7 percent to Idaho's GSP.

Perhaps the most important policy implication that one can draw from this brief description is that no set of industries is particularly dominant. State and local government policies must be seen as a balancing act between our old base and new base. It will be very difficult to generate compensatory growth in non-resource based sectors to offset state and federal policies that damage Idaho's resource-based industries. Conversely, policies at the state and local level that may damage or inhibit the potential of our fastest growing parts of the economy for the benefit of our resource based industries could damage our growth potential.

Bibliography

Minnesota IMPLAN Group. IMPLAN Pro. Software and Database. Stillwater, Minnesota. 1996.

Robison, Marvin, Neil Meyer, Roger Coupal and Charles Harris. "The Role of Natural Resource-Based Industries in Idaho's Economy." Extension Bulletin 731. Idaho Cooperative Extension System, University of Idaho. 1991.

Santos, Derek. "Economic Forecast of Idaho". Presentation at the Pacific Northwest Economic Conference, Spokane, Washington. May, 1997.

Tolbert, Charles M. and Molly Sizer. "U.S. Commuting Zones and Labor Market Areas: a 1990 Update," ERS Staff Paper 9614, U.S. Department of Agriculture, Economic Research Service, Rural Economic Division, September 1996.

U. S. Department of Commerce. "Regional Economic Information System" Bureau of Economic Analysis, 1995.

U. S. Department of Commerce. "Regional Economic Information System Gross State Product Series" Bureau of Economic Analysis, 1995.

Waters, Edward, and David W. Holland. "What is Oregon's Economic Base: Implications from an Oregon Social Accounting Matrix." Paper presented at the Pacific Northwest Economic Conference. Portland Oregon. May 1996.

State of Idaho Baseline Statistics and Type II Multipliers

	Industry Output (\$MM)	Pct. of Total	Mult. (Type II)	Industry Earnings	Pct. of Total	Mult. (Type II)	Value - Added	Pct. of Total	Mult. (Type II)	Employ - ment (jobs)	Pct. of Total	Mult. (Type II)
1 Dairy Farm Products	387.91	0.90%	1.669	244.35	1.58%	1.405	276.31	1.20%	1.568	2,575	0.41%	2.95
2 Misc. livestock	76.00	0.18%	1.547	21.64	0.14%	1.774	35.05	0.15%	1.709	1,438	0.23%	1.63
3 Cattle	299.99	0.70%	1.689	64.18	0.42%	2.086	100.50	0.44%	2.106	8,085	1.30%	1.50
5 Cattle Feedlots	393.58	0.91%	1.650	80.63	0.52%	2.068	149.23	0.65%	1.921	2,946	0.47%	2.70
6 Sheep, Lambs and Goats	14.78	0.03%	1.662	3.70	0.02%	1.920	5.44	0.02%	1.987	230	0.04%	1.75
10 Misc crops	27.24	0.06%	1.389	9.73	0.06%	1.408	25.04	0.11%	1.247	468	0.08%	1.44
11 Food Grains	325.88	0.76%	1.568	105.23	0.68%	1.604	226.91	0.99%	1.438	4,137	0.66%	1.76
12 Feed Grains	172.26	0.40%	1.426	68.87	0.45%	1.384	156.60	0.68%	1.267	1,966	0.32%	1.68
13 Hay and Pasture	228.11	0.53%	1.397	82.25	0.53%	1.396	206.25	0.90%	1.249	3,443	0.55%	1.47
14 Grass Seeds	69.59	0.16%	1.264	16.91	0.11%	1.393	63.26	0.27%	1.172	848	0.14%	1.39
16 Fruits	25.32	0.06%	1.849	16.49	0.11%	1.520	18.38	0.08%	1.692	656	0.11%	1.70
18 Vegetables	686.13	1.59%	1.544	319.80	2.07%	1.459	595.94	2.59%	1.374	6,124	0.98%	2.27
19 Sugar Crops	162.33	0.38%	1.430	63.90	0.41%	1.400	147.59	0.64%	1.273	2,333	0.37%	1.56
22 Forest Products	9.94	0.02%	1.292	2.30	0.01%	1.474	9.03	0.04%	1.187	62	0.01%	1.90
23 Greenhouse and Nursery Products	71.48	0.17%	1.592	43.31	0.28%	1.374	65.67	0.29%	1.388	980	0.16%	1.82
24 Forestry Products	47.41	0.11%	1.837	4.00	0.03%	5.599	18.74	0.08%	2.273	235	0.04%	5.71
25 Commercial Fishing	1.37	0.00%	1.503	0.69	0.00%	1.366	1.18	0.01%	1.338	18	0.00%	1.71
26 Agricultural, Forestry, Fishery Ser	164.48	0.38%	1.856	133.90	0.87%	1.381	134.09	0.58%	1.597	10,208	1.64%	1.26
27 Landscape and Horticultural Servi	68.36	0.16%	1.911	40.58	0.26%	1.589	40.54	0.18%	1.910	2,834	0.45%	1.37
28 Metal mining	183.37	0.43%	1.682	63.90	0.41%	1.684	107.69	0.47%	1.648	1,098	0.18%	2.74
37 Coal Mining	0.37	0.00%	1.723	0.22	0.00%	1.443	0.25	0.00%	1.612	6	0.00%	1.76
38 Petrol, nat gas	0.63	0.00%	1.748	0.26	0.00%	1.586	0.40	0.00%	1.598	69	0.01%	1.10
40 Other mining	308.10	0.72%	1.648	78.14	0.51%	1.886	143.16	0.62%	1.759	1,286	0.21%	3.51
48 New Residential Structures	777.85	1.81%	1.811	148.44	0.96%	2.642	250.79	1.09%	2.440	7,839	1.26%	2.40

State of Idaho Baseline Statistics and Type II Multipliers

Industry	Output (\$MM)	Pct. of Total	Mult. (Type II)	Industry Earnings	Pct. of Total	Mult. (Type II)	Value - Added	Pct. of Total	Mult. (Type II)	Employ - ment (jobs)	Pct. of Total	Mult. (Type II)
49 Construction	6,017.93	13.98%	1.677	1,254.84	8.12%	2.243	1,948.27	8.47%	2.196	44,174	7.08%	2.62
58 Meat processing	517.51	1.20%	2.302	38.50	0.25%	5.505	33.02	0.14%	9.305	1,672	0.27%	7.16
61 Dairy Processing	447.16	1.04%	2.079	34.00	0.22%	6.406	61.34	0.27%	5.088	1,201	0.19%	5.39
66 Canned, frozen foods	1,958.14	4.55%	1.627	366.40	2.37%	2.142	709.48	3.08%	1.916	12,774	2.05%	2.45
72 Food Milling	156.01	0.36%	1.572	12.81	0.08%	3.349	13.20	0.06%	4.624	431	0.07%	3.97
79 Bread, sugar, confectionary	432.65	1.01%	1.598	55.31	0.36%	2.595	89.71	0.39%	2.580	1,613	0.26%	3.41
86 Food Oil processing	1.63	0.00%	1.423	0.21	0.00%	2.106	0.45	0.00%	1.862	7	0.00%	2.52
91 Beverages	93.56	0.22%	1.420	12.12	0.08%	2.146	24.66	0.11%	1.873	384	0.06%	2.62
97 Other food proc	118.43	0.28%	1.517	18.82	0.12%	2.068	31.23	0.14%	2.020	804	0.13%	2.13
108 Textiles and Fabrics	48.93	0.11%	1.525	8.44	0.05%	2.032	11.25	0.05%	2.223	862	0.14%	1.45
133 Logging Camps and Logging Con	700.88	1.63%	1.489	174.43	1.13%	1.664	255.03	1.11%	1.694	3,518	0.56%	2.49
134 Sawmills and Planing Mills, Gen	1,211.56	2.82%	2.005	427.83	2.77%	1.943	563.48	2.45%	2.089	6,508	1.04%	3.46
135 Hardwood Dimension and Floorir	6.33	0.01%	1.952	3.00	0.02%	1.730	3.42	0.01%	1.973	90	0.01%	2.02
136 Special Product Sawmills, N.E.C	13.56	0.03%	2.117	5.58	0.04%	1.890	6.31	0.03%	2.203	169	0.03%	2.24
137 Millwork	213.66	0.50%	1.827	91.09	0.59%	1.715	107.41	0.47%	1.923	2,088	0.33%	2.32
139 Veneer and Plywood	209.70	0.49%	1.938	73.07	0.47%	1.914	94.37	0.41%	2.080	1,186	0.19%	3.25
140 Structural Wood Members, N.E.C	90.20	0.21%	1.977	42.75	0.28%	1.760	48.61	0.21%	2.010	674	0.11%	2.96
141 Wood processing	284.00	0.66%	1.808	107.80	0.70%	1.762	129.81	0.56%	1.968	2,076	0.33%	2.67
152 Wood furniture	97.19	0.23%	1.713	34.92	0.23%	1.724	42.88	0.19%	1.896	1,422	0.23%	1.82
161 Paper and Pulp	668.64	1.55%	1.520	131.50	0.85%	1.936	238.72	1.04%	1.800	2,321	0.37%	3.28
174 Printing and Publishing	395.22	0.92%	1.542	119.25	0.77%	1.669	185.06	0.80%	1.659	5,500	0.88%	1.69
186 Non-Ag chemicals	593.79	1.38%	1.659	178.45	1.15%	1.765	318.18	1.38%	1.680	3,226	0.52%	2.77
202 Agr Chemicals	333.58	0.78%	1.871	34.77	0.22%	3.566	14.97	0.07%	9.869	949	0.15%	4.88
205 Other Chem	4.55	0.01%	1.758	0.72	0.00%	2.615	1.32	0.01%	2.398	22	0.00%	3.02
210 Petrol products	120.14	0.28%	1.470	24.89	0.16%	1.792	37.96	0.16%	1.822	975	0.16%	1.88
221 leather products	18.52	0.04%	1.764	4.53	0.03%	1.903	7.54	0.03%	1.837	346	0.06%	1.59
230 glass products	4.11	0.01%	1.619	0.94	0.01%	1.947	1.48	0.01%	1.940	55	0.01%	1.69
232 Ceramic, brick, stone	157.19	0.37%	1.633	38.57	0.25%	1.933	62.47	0.27%	1.887	1,340	0.21%	2.19
254 Prim metal products	34.75	0.08%	1.641	7.09	0.05%	2.108	9.54	0.04%	2.286	241	0.04%	2.36
273 Fabricated metal Products	267.06	0.62%	1.521	73.09	0.47%	1.688	116.22	0.51%	1.670	2,494	0.40%	1.93
307 Engine and Equipment	366.08	0.85%	1.639	99.14	0.64%	1.829	139.65	0.61%	1.906	3,064	0.49%	2.18
339 Computer and Periph	1,656.91	3.85%	1.741	316.33	2.05%	2.170	472.68	2.05%	2.202	6,796	1.09%	3.10

State of Idaho Baseline Statistics and Type II Multipliers

	Industry Output (\$MM)	Pct. of Total	Mult. (Type II)	Industry Earnings	Pct. of Total	Mult. (Type II)	Value - Added	Pct. of Total	Mult. (Type II)	Employ - ment (jobs)	Pct. of Total	Mult. (Type II)
355 Electronic Equipment	1,035.62	2.41%	1.678	341.71	2.21%	1.732	502.82	2.19%	1.771	6,986	1.12%	2.56
384 Motor Vehicles	1.04	0.00%	1.329	0.13	0.00%	1.985	0.20	0.00%	1.933	2	0.00%	3.70
385 Transport equip	207.46	0.48%	1.528	42.89	0.28%	1.908	59.89	0.26%	1.992	1,436	0.23%	2.22
389 Aircraft	18.31	0.04%	1.562	5.00	0.03%	1.730	6.09	0.03%	1.929	157	0.03%	2.08
400 Technical, scientific instruments	51.31	0.12%	1.661	14.16	0.09%	1.841	21.93	0.10%	1.838	426	0.07%	2.21
414 Misc Mfg	79.80	0.19%	1.622	17.64	0.11%	2.009	27.19	0.12%	2.001	1,161	0.19%	1.69
433 Railroads and Related Services	269.02	0.63%	1.853	138.12	0.89%	1.563	182.74	0.79%	1.659	1,948	0.31%	2.85
434 Local, Interurban Passenger Tran:	25.14	0.06%	1.701	19.72	0.13%	1.333	23.95	0.10%	1.435	1,207	0.19%	1.27
435 Motor Freight Transport and War	685.75	1.59%	1.874	292.39	1.89%	1.783	392.99	1.71%	1.878	11,558	1.85%	1.94
436 Water Transportation	48.24	0.11%	1.619	4.74	0.03%	3.163	6.58	0.03%	3.319	302	0.05%	2.54
437 Air Transportation	178.32	0.41%	1.585	40.25	0.26%	1.956	64.29	0.28%	1.903	1,516	0.24%	2.18
438 Water, sewer, gas	180.10	0.42%	1.484	39.57	0.26%	1.712	67.44	0.29%	1.667	1,143	0.18%	2.13
439 Transp. Services	56.78	0.13%	1.797	29.85	0.19%	1.551	35.59	0.15%	1.722	1,161	0.19%	1.69
441 Communcations	495.82	1.15%	1.739	137.30	0.89%	1.887	254.28	1.11%	1.754	3,407	0.55%	2.72
443 Electric Services	480.70	1.12%	1.588	112.78	0.73%	1.813	318.65	1.38%	1.445	2,115	0.34%	2.93
445 Water Supply and Sewerage Syste	5.84	0.01%	2.122	1.81	0.01%	2.130	1.84	0.01%	2.740	81	0.01%	2.14
447 Wholesale Trade	1,259.20	2.93%	1.596	777.51	5.03%	1.358	1,155.24	5.02%	1.381	28,013	4.49%	1.51
448 Other retail	1,707.64	3.97%	1.673	962.61	6.23%	1.436	1,369.15	5.95%	1.482	59,576	9.55%	1.34
450 Food Stores	462.05	1.07%	1.654	300.33	1.94%	1.371	412.44	1.79%	1.427	15,242	2.44%	1.36
454 Eating & Drinking	800.96	1.86%	1.843	324.50	2.10%	1.661	410.09	1.78%	1.814	31,792	5.10%	1.32
456 FIRE	2,852.11	6.63%	1.703	643.96	4.17%	2.040	1,431.34	6.22%	1.751	35,014	5.61%	1.92
461 Owner-occupied Dwellings	1,701.39	3.95%	1.298	0.00	0.00%	1.405	1,292.71	5.62%	1.187	0	0.00%	1.27
463 Hotels and Lodging Places	187.56	0.44%	1.681	113.65	0.74%	1.503	156.98	0.68%	1.462	8,321	1.33%	1.27
464 Personal Services	188.18	0.44%	1.774	106.50	0.69%	1.436	124.77	0.54%	1.664	9,785	1.57%	1.64
469 Advertising	30.11	0.07%	1.726	18.37	0.12%	1.688	23.18	0.10%	1.545	644	0.10%	1.52
470 Misc. Business Services	1,438.45	3.34%	1.681	515.98	3.34%	1.493	698.07	3.03%	1.788	33,156	5.32%	1.69
475 Computer and Data Processing Se	100.72	0.23%	1.756	54.93	0.36%	1.746	67.07	0.29%	1.628	1,846	0.30%	1.44
483 Recreation Services	276.92	0.64%	1.784	105.82	0.68%	1.408	153.31	0.67%	1.791	10,526	1.69%	1.89
490 Doctors and Dentists	731.08	1.70%	1.731	486.10	3.15%	1.397	594.31	2.58%	1.523	11,189	1.79%	1.34
491 Nursing and Protective Care	149.01	0.35%	1.853	113.92	0.74%	1.525	121.75	0.53%	1.587	6,515	1.04%	1.78
492 Hospitals	601.14	1.40%	1.827	330.29	2.14%	1.446	353.92	1.54%	1.781	10,616	1.70%	1.37
493 Other Medical and Health Service	145.89	0.34%	1.719	85.27	0.55%	1.393	107.90	0.47%	1.558	4,858	0.78%	1.85

State of Idaho Baseline Statistics and Type II Multipliers

	Industry Output (\$MM)	Pct. of Total	Mult. (Type II)	Industry Earnings	Pct. of Total	Mult. (Type II)	Value - Added	Pct. of Total	Mult. (Type II)	Employ - ment (jobs)	Pct. of Total	Mult. (Type II)
494 Legal Services	232.29	0.54%	1.739	164.75	1.07%	1.803	197.46	0.86%	1.511	3,874	0.62%	1.521
495 Education, job training	248.79	0.58%	1.994	101.71	0.66%	1.681	101.71	0.44%	2.259	7,464	1.20%	1.461
499 Other social services	409.63	0.95%	1.838	176.16	1.14%	1.628	192.29	0.84%	1.962	12,384	1.99%	1.921
506 Engineering, Architectural Servic	206.59	0.48%	1.873	107.71	0.70%	1.580	123.54	0.54%	1.826	3,818	0.61%	1.681
507 Accounting, Auditing and Bookke	91.73	0.21%	1.851	50.58	0.33%	1.740	56.27	0.24%	1.784	2,054	0.33%	1.841
508 Management and Consulting Serv	134.71	0.31%	1.851	56.63	0.37%	1.433	62.25	0.27%	2.012	2,387	0.38%	1.731
509 Research, Development & Testing	624.60	1.45%	1.823	443.98	2.87%	1.448	475.51	2.07%	1.627	12,802	2.05%	1.351
510 Local Government Passenger Tra	0.37	0.00%	2.725	0.50	0.00%	1.611	0.18	0.00%	2.952	30	0.00%	2.071
511 State and Local Electric Utilities	20.53	0.05%	1.460	5.21	0.03%	1.896	15.77	0.07%	1.313	136	0.02%	1.931
512 Other State and Local Govt Enter	136.01	0.32%	1.737	34.69	0.22%	1.404	87.96	0.38%	1.5487	1,492	0.24%	1.871
513 U.S. Postal Service	135.76	0.00315	1.904527	112.33976	0.007269	1.512307	104.51114	0.004542	1.680626	2573	0.004126	1.299061
515 Other Federal Government Enter	10.35	0.00024	1.499665	3.4311831	0.000222	1.312985	5.3338139	0.000232	1.514439	302	0.000484	1.417714
519 Federal Government - Military	323.25	0.00751	1.840228	323.24619	0.020915	1.312985	323.24619	0.014048	1.499002	12431	0.019934	1.72421
520 Federal Government - Non-Milita	474.36	0.01102	1.840228	474.35818	0.030693	1.312985	474.35818	0.020615	1.499002	10521	0.016871	1.340000
522 State & Local Government - Educ	960.91	0.02233	1.840228	960.90765	0.062175	1.312985	960.90765	0.04176	1.499002	45399	0.072799	1.425171
523 State & Local Government - Non-	830.26	0.01929	1.840228	830.26379	0.053722	1.312985	830.26379	0.036083	1.499002	31369	0.050302	1.104161
525 Domestic Services	26.05	0.00061	1.840228	26.047079	0.001685		0 26.047079	0.001132	1.499002	4017	0.006441	
528 Inventory Valuation Adjustment	-24.05	-0.00056	1	0	0	0	-24.05069	-0.00105	1	0	0	
Total	43,035.79		1	15454.913		1	23010.03		1	623618		1

Southwestern Idaho Baseline Statistics and Type II Multipliers

	Industry Output (\$MM)	Pct. of Total	Multiplier	Industry Earnings	Pct. of Total	Multiplier	Value - Added	Pct. of Total	Multiplier	Employ - ment (jobs)	Pct. of Total	Multiplier
1 Dairy Farm Products	88.33	0.48%	1.707	74.27	1.13%	1.327	82.96	0.86%	1.459	744	0.29%	2.577
2 Misc. livestock	8.32	0.05%	1.479	3.52	0.05%	1.464	5.83	0.06%	1.419	203	0.08%	1.407
3 Cattle	58.40	0.32%	1.564	16.75	0.25%	1.726	25.92	0.27%	1.726	2,174	0.85%	1.318
5 Cattle Feedlots	195.44	1.06%	1.529	49.97	0.76%	1.761	91.01	0.94%	1.647	1,806	0.71%	2.196
6 Sheep, Lambs and Goats	2.91	0.02%	1.608	0.94	0.01%	1.701	1.35	0.01%	1.752	57	0.02%	1.577
10 Misc crops	28.15	0.15%	1.391	9.69	0.15%	1.450	24.81	0.26%	1.268	462	0.18%	1.475
11 Food Grains	24.26	0.13%	1.446	10.65	0.16%	1.387	21.37	0.22%	1.302	410	0.16%	1.484
12 Feed Grains	16.92	0.09%	1.732	2.08	0.03%	3.164	2.59	0.03%	3.664	222	0.09%	1.965
13 Hay and Pasture	41.04	0.22%	1.351	17.63	0.27%	1.316	40.91	0.42%	1.214	725	0.28%	1.371
14 Grass Seeds	11.18	0.06%	1.313	3.43	0.05%	1.394	9.68	0.10%	1.222	175	0.07%	1.371
16 Fruits	21.48	0.12%	1.791	14.04	0.21%	1.513	15.59	0.16%	1.678	561	0.22%	1.657
18 Vegetables	92.43	0.50%	1.507	16.99	0.26%	2.233	60.06	0.62%	1.491	947	0.37%	2.217
19 Sugar Crops	63.78	0.34%	1.700	22.78	0.35%	1.757	34.78	0.36%	1.750	1,043	0.41%	1.819
22 Forest Products	0.92	0.00%	1.274	0.21	0.00%	1.465	0.84	0.01%	1.182	9	0.00%	1.550
23 Greenhouse and Nursery Products	33.25	0.18%	1.561	21.13	0.32%	1.348	31.65	0.33%	1.362	479	0.19%	1.730
24 Forestry Products	18.13	0.10%	1.755	1.51	0.02%	5.415	7.27	0.08%	2.166	88	0.03%	5.490
25 Commercial Fishing	0.34	0.00%	1.476	0.17	0.00%	1.368	0.29	0.00%	1.330	4	0.00%	1.660
26 Agricultural, Forestry, Fishery Serv	57.25	0.31%	1.760	46.71	0.71%	1.361	46.78	0.48%	1.563	3,431	1.34%	1.242
27 Landscape and Horticultural Servic	33.34	0.18%	1.824	19.81	0.30%	1.572	19.79	0.20%	1.879	1,386	0.54%	1.349
28 Metal mining	33.02	0.18%	1.632	12.00	0.18%	1.633	20.46	0.21%	1.587	201	0.08%	2.598
37 Coal Mining	0.10	0.00%	1.704	0.06	0.00%	1.440	0.07	0.00%	1.601	2	0.00%	1.700
38 Petrol, nat gas	0.04	0.00%	1.700	0.01	0.00%	1.601	0.02	0.00%	1.566	4	0.00%	1.097
40 Other mining	20.15	0.11%	1.638	7.93	0.12%	1.586	11.92	0.12%	1.608	133	0.05%	2.582

Southwestern Idaho Baseline Statistics and Type II Multipliers

	Industry Output (\$MM)	Pct. of Total	Multiplier	Industry Earnings	Pct. of Total	Multiplier	Value - Added	Pct. of Total	Multiplier	Employ - ment (jobs)	Pct. of Total	Multiplier
48 New Residential Structures	361.16	1.95%	1.780	71.66	1.09%	2.574	122.77	1.27%	2.343	3,526	1.38%	2.385
49 Construction	2,794.37	15.12%	1.650	605.51	9.19%	2.188	951.64	9.83%	2.116	19,991	7.82%	2.597
58 Meat processing	364.77	1.97%	2.031	25.02	0.38%	5.156	15.36	0.16%	11.574	1,050	0.41%	6.654
61 Dairy Processing	168.32	0.91%	1.606	15.53	0.24%	3.248	25.96	0.27%	2.922	545	0.21%	3.115
66 Canned, frozen foods	684.07	3.70%	1.579	130.28	1.98%	2.051	257.09	2.66%	1.828	3,932	1.54%	2.566
72 Food Milling	45.98	0.25%	1.453	4.13	0.06%	2.760	4.38	0.05%	3.562	138	0.05%	3.238
79 Bread, sugar, confectionary	203.09	1.10%	1.540	26.82	0.41%	2.472	44.64	0.46%	2.339	813	0.32%	3.166
86 Food Oil processing	1.20	0.01%	1.442	0.17	0.00%	2.053	0.38	0.00%	1.800	6	0.00%	2.341
91 Beverages	35.70	0.19%	1.399	4.64	0.07%	2.143	9.34	0.10%	1.865	164	0.06%	2.401
97 Other food proc	40.26	0.22%	1.438	5.58	0.08%	2.069	11.78	0.12%	1.808	250	0.10%	2.053
108 Textiles and Fabrics	8.46	0.05%	1.379	1.72	0.03%	1.691	2.25	0.02%	1.817	165	0.06%	1.336
133 Logging Camps and Logging Contr	103.13	0.56%	1.447	24.99	0.38%	1.656	36.66	0.38%	1.678	529	0.21%	2.362
134 Sawmills and Planing Mills, Gener	319.92	1.73%	1.905	119.93	1.82%	1.834	158.14	1.63%	1.956	1,541	0.60%	3.523
135 Hardwood Dimension and Flooring	0.29	0.00%	1.950	0.12	0.00%	1.865	0.14	0.00%	2.130	6	0.00%	1.687
137 Millwork	171.98	0.93%	1.799	73.37	1.11%	1.718	86.53	0.89%	1.916	1,692	0.66%	2.245
139 Veneer and Plywood	70.91	0.38%	1.891	23.68	0.36%	1.934	30.72	0.32%	2.087	429	0.17%	2.982
140 Structural Wood Members, N.E.C	55.81	0.30%	1.932	26.71	0.41%	1.748	30.46	0.31%	1.981	406	0.16%	2.897
141 Wood processing	169.54	0.92%	1.800	72.01	1.09%	1.711	83.45	0.86%	1.920	1,339	0.52%	2.542
152 Wood furniture	45.19	0.24%	1.679	14.99	0.23%	1.773	18.66	0.19%	1.930	683	0.27%	1.749
161 Paper and Pulp	25.88	0.14%	1.514	8.19	0.12%	1.610	10.75	0.11%	1.714	142	0.06%	2.547
174 Printing and Publishing	178.99	0.97%	1.505	52.49	0.80%	1.666	83.35	0.86%	1.633	2,193	0.86%	1.726
186 Non-Ag chemicals	7.01	0.04%	1.399	0.84	0.01%	2.240	1.83	0.02%	1.854	42	0.02%	2.055
202 Agr Chemicals	16.34	0.09%	1.444	1.91	0.03%	2.397	2.94	0.03%	2.380	57	0.02%	3.085
210 Petrol products	55.92	0.30%	1.357	11.72	0.18%	1.631	17.81	0.18%	1.641	470	0.18%	1.698
221 leather products	13.14	0.07%	1.657	3.52	0.05%	1.745	5.76	0.06%	1.688	241	0.09%	1.536
230 glass products	0.89	0.00%	1.543	0.17	0.00%	2.039	0.27	0.00%	1.980	13	0.01%	1.553
232 Ceramic, brick, stone	37.89	0.20%	1.591	9.35	0.14%	1.902	14.86	0.15%	1.862	366	0.14%	2.003
254 Prim metal products	21.01	0.11%	1.597	4.06	0.06%	2.126	5.93	0.06%	2.191	142	0.06%	2.298
273 Fabricated metal Products	122.57	0.66%	1.532	34.39	0.52%	1.707	48.39	0.50%	1.767	1,243	0.49%	1.863
307 Engine and Equipment	176.68	0.96%	1.654	48.43	0.74%	1.861	66.99	0.69%	1.944	1,360	0.53%	2.275
339 Computer and Periphs	1,644.75	8.90%	1.725	313.45	4.76%	2.171	472.11	4.88%	2.185	6,732	2.63%	2.995
355 Electronic Equipment	832.61	4.50%	1.652	286.57	4.35%	1.699	417.26	4.31%	1.735	5,443	2.13%	2.532

Southwestern Idaho Baseline Statistics and Type II Multipliers

	Industry Output (\$MM)	Pct. of Total	Multiplier	Industry Earnings	Pct. of Total	Multiplier	Value - Added	Pct. of Total	Multiplier	Employ - ment (jobs)	Pct. of Total	Multiplier
385 Transport equip	168.56	0.91%	1.534	36.10	0.55%	1.914	49.16	0.51%	2.010	1,178	0.46%	2.206
389 Aircraft	17.28	0.09%	1.549	4.73	0.07%	1.729	5.75	0.06%	1.918	146	0.06%	2.031
400 Technical, scientific instruments	21.80	0.12%	1.663	5.77	0.09%	1.909	8.30	0.09%	1.959	185	0.07%	2.162
414 Misc Mfg	33.80	0.18%	1.603	8.53	0.13%	1.897	11.74	0.12%	1.983	497	0.19%	1.672
433 Railroads and Related Services	34.73	0.19%	1.825	17.13	0.26%	1.580	23.03	0.24%	1.664	281	0.11%	2.563
434 Local, Interurban Passenger Transit	13.51	0.07%	1.670	10.91	0.17%	1.321	13.28	0.14%	1.415	632	0.25%	1.267
435 Motor Freight Transport and Waret	305.11	1.65%	1.866	130.95	1.99%	1.797	176.51	1.82%	1.880	5,051	1.98%	1.941
436 Water Transportation	7.99	0.04%	1.553	0.79	0.01%	3.021	1.09	0.01%	3.165	50	0.02%	2.404
437 Air Transportation	99.41	0.54%	1.572	23.64	0.36%	1.915	37.18	0.38%	1.870	824	0.32%	2.163
438 Water, sewer, gas	103.47	0.56%	1.459	22.16	0.34%	1.704	41.69	0.43%	1.600	570	0.22%	2.177
439 Transp. Services	24.79	0.13%	1.773	13.16	0.20%	1.549	15.72	0.16%	1.710	479	0.19%	1.702
441 Communications	238.92	1.29%	1.700	68.93	1.05%	1.835	126.86	1.31%	1.709	1,517	0.59%	2.720
443 Electric Services	246.68	1.33%	1.569	57.90	0.88%	1.805	163.54	1.69%	1.439	1,052	0.41%	2.895
445 Water Supply and Sewerage System	2.59	0.01%	2.075	0.99	0.02%	1.915	0.97	0.01%	2.452	33	0.01%	2.185
447 Wholesale Trade	636.40	3.44%	1.585	400.53	6.08%	1.358	584.91	6.04%	1.383	13,002	5.09%	1.534
448 Other retail	665.17	3.60%	1.658	379.42	5.76%	1.438	535.36	5.53%	1.482	21,928	8.58%	1.355
450 Food Stores	225.46	1.22%	1.647	150.26	2.28%	1.372	201.65	2.08%	1.433	6,350	2.49%	1.417
454 Eating & Drinking	334.80	1.81%	1.754	139.30	2.11%	1.601	175.27	1.81%	1.739	12,847	5.03%	1.305
456 FIRE	1,379.64	7.46%	1.688	338.98	5.15%	1.972	708.70	7.32%	1.736	17,471	6.84%	1.874
461 Owner-occupied Dwellings	716.66	3.88%	1.294	0.00	0.00%	1.404	544.51	5.63%	1.190	0	0.00%	1.263
463 Hotels and Lodging Places	42.72	0.23%	1.651	25.90	0.39%	1.483	35.91	0.37%	1.453	1,900	0.74%	1.255
464 Personal Services	78.47	0.42%	1.734	45.47	0.69%	1.430	52.91	0.55%	1.636	4,096	1.60%	1.603
469 Advertising	19.65	0.11%	1.695	12.06	0.18%	1.625	15.15	0.16%	1.534	419	0.16%	1.433
470 Misc. Business Services	715.04	3.87%	1.658	283.52	4.30%	1.485	377.66	3.90%	1.721	19,163	7.50%	1.768
475 Computer and Data Processing Ser	54.97	0.30%	1.733	30.23	0.46%	1.694	36.83	0.38%	1.615	853	0.33%	1.384
483 Recreation Services	93.99	0.51%	1.718	36.56	0.56%	1.403	52.63	0.54%	1.735	3,680	1.44%	1.966
490 Doctors and Dentists	324.81	1.76%	1.696	216.14	3.28%	1.391	264.53	2.73%	1.509	4,325	1.69%	1.328
491 Nursing and Protective Care	60.87	0.33%	1.810	46.60	0.71%	1.483	49.85	0.52%	1.572	2,632	1.03%	1.732
492 Hospitals	347.02	1.88%	1.730	192.07	2.92%	1.416	206.00	2.13%	1.705	6,037	2.36%	1.334
493 Other Medical and Health Services	47.92	0.26%	1.638	27.93	0.42%	1.381	35.50	0.37%	1.509	1,646	0.64%	1.826
494 Legal Services	116.96	0.63%	1.695	82.81	1.26%	1.845	99.80	1.03%	1.489	1,851	0.72%	1.478
495 Education, job training	89.80	0.49%	1.969	35.13	0.53%	1.642	35.13	0.36%	2.311	2,822	1.10%	1.446

Southwestern Idaho Baseline Statistics and Type II Multipliers

	Industry Output (\$MM)	Pct. of Total	Multiplier	Industry Earnings	Pct. of Total	Multiplier	Value - Added	Pct. of Total	Multiplier	Employ - ment (jobs)	Pct. of Total	Multiplier
499 Other social services	163.59	0.88%	1.787	72.39	1.10%	1.625	79.61	0.82%	1.895	4,807	1.88%	1.895
506 Engineering, Architectural Services	85.36	0.46%	1.837	44.60	0.68%	1.563	51.18	0.53%	1.812	1,574	0.62%	1.653
507 Accounting, Auditing and Bookkee	33.10	0.18%	1.809	18.21	0.28%	1.711	20.47	0.21%	1.751	722	0.28%	1.738
508 Management and Consulting Servic	36.56	0.20%	1.775	14.98	0.23%	1.479	16.62	0.17%	1.959	663	0.26%	1.467
509 Research, Development & Testing !	26.09	0.14%	1.787	16.53	0.25%	1.610	18.11	0.19%	1.667	797	0.31%	2.056
511 State and Local Electric Utilities	0.93	0.01%	1.446	0.24	0.00%	1.900	0.72	0.01%	1.311	6	0.00%	1.887
512 Other State and Local Govt Enterpr	48.84	0.26%	1.718	12.46	0.19%	1.399	31.58	0.33%	1.548	536	0.21%	1.880
513 U.S. Postal Service	60.33	0.33%	1.876	50.77	0.77%	1.491	47.24	0.49%	1.665	1,092	0.43%	1.275
515 Other Federal Government Enterpri	10.35	0.06%	1.464	3.43	0.05%	0.000	5.33	0.06%	1.490	302	0.12%	0.000
519 Federal Government - Military	206.28	1.12%	1.812	206.28	3.13%	1.314	206.28	2.13%	0.000	6,607	2.59%	1.705
520 Federal Government - Non-Military	248.96	1.35%	1.812	248.96	3.78%	0.000	248.96	2.57%	1.494	5,353	2.10%	0.000
522 State & Local Government - Educa!	345.26	1.87%	0.000	345.26	5.24%	1.314	345.26	3.57%	0.000	15,516	6.07%	1.427
523 State & Local Government - Non-E	324.01	1.75%	0.000	324.01	4.92%	0.000	324.01	3.35%	1.494	11,499	4.50%	0.000
525 Domestic Services	10.79	0.06%	1.000	10.79	0.16%	0.000	10.79	0.11%	0.000	1,599	0.63%	0.000
528 Inventory Valuation Adjustment	-10.08	-0.05%	0.000	0.00	0.00%	0.000	-10.08	-0.10%	0.000	0	0.00%	0.000
Total	18,486.37	100.00%		6,587.72	100.00%		9,677.76	100.00%		255,503	100.00%	

Northern Idaho Baseline Statistics and Type II Multipliers

	Industry Output (\$MM)	Pct. of Total	Mult. (Type II)	Industry Earnings	Pct. of Total	Mult. (Type II)	Value - Added	Pct. of Total	Mult. (Type II)	Employ - ment (jobs)	Pct. of Total	Mult. (Type II)
1 Dairy Farm Products	8.84	0.14%	1.593	7.42	0.30%	1.277	8.51	0.22%	1.397	67	0.05%	2.748
2 Misc. livestock	7.44	0.12%	1.437	3.04	0.12%	1.442	5.05	0.13%	1.420	148	0.11%	1.514
3 Cattle	17.82	0.28%	1.514	6.04	0.24%	1.571	9.69	0.25%	1.584	703	0.54%	1.314
5 Cattle Feedlots	7.60	0.12%	1.474	2.01	0.08%	1.671	4.01	0.11%	1.552	66	0.05%	2.318
6 Sheep, Lambs and Goats	0.95	0.01%	1.518	0.32	0.01%	1.587	0.48	0.01%	1.625	19	0.01%	1.539
10 Misc crops	0.06	0.00%	1.322	0.02	0.00%	1.425	0.05	0.00%	1.240	1	0.00%	1.440
11 Food Grains	92.35	1.44%	1.387	31.50	1.26%	1.421	70.90	1.86%	1.310	1,207	0.93%	1.613
12 Feed Grains	30.87	0.48%	1.306	12.24	0.49%	1.298	29.24	0.77%	1.206	333	0.26%	1.623
13 Hay and Pasture	30.62	0.48%	1.307	11.12	0.44%	1.324	27.78	0.73%	1.215	515	0.40%	1.395
14 Grass Seeds	56.35	0.88%	1.202	12.76	0.51%	1.339	51.37	1.35%	1.146	624	0.48%	1.387
16 Fruits	2.73	0.04%	1.654	1.93	0.08%	1.386	2.14	0.06%	1.545	69	0.05%	1.622
18 Vegetables	50.28	0.79%	1.350	25.06	1.00%	1.276	49.90	1.31%	1.228	442	0.34%	1.894
22 Forest Products	7.49	0.12%	1.224	1.78	0.07%	1.371	6.92	0.18%	1.155	46	0.04%	1.804
23 Greenhouse and Nursery Products	18.45	0.29%	1.463	11.66	0.47%	1.290	17.85	0.47%	1.311	252	0.19%	1.753
24 Forestry Products	19.17	0.30%	1.642	1.52	0.06%	5.045	7.03	0.18%	2.162	103	0.08%	4.565
25 Commercial Fishing	0.53	0.01%	1.432	0.28	0.01%	1.307	0.45	0.01%	1.318	9	0.01%	1.554
26 Agricultural, Forestry, Fishery Serv	14.91	0.23%	1.703	12.16	0.49%	1.338	12.18	0.32%	1.552	838	0.65%	1.283
27 Landscape and Horticultural Servic	10.17	0.16%	1.716	5.92	0.24%	1.516	5.91	0.16%	1.826	443	0.34%	1.330
28 Metal mining	102.93	1.61%	1.526	36.68	1.47%	1.535	63.23	1.66%	1.513	661	0.51%	2.454
37 Coal Mining	0.02	0.00%	1.514	0.01	0.00%	1.363	0.01	0.00%	1.462	1	0.00%	1.249
40 Other mining	45.49	0.71%	1.537	21.21	0.85%	1.430	28.77	0.76%	1.517	337	0.26%	2.482
48 New Residential Structures	160.40	2.51%	1.593	28.93	1.16%	2.320	48.38	1.27%	2.208	1,691	1.31%	2.319
49 Construction	1,241.07	19.41%	1.501	244.81	9.79%	2.008	376.79	9.90%	2.012	9,476	7.32%	2.404
58 Meat processing	3.06	0.05%	1.888	0.21	0.01%	5.635	0.32	0.01%	6.130	37	0.03%	2.598

Northern Idaho Baseline Statistics and Type II Multipliers

Industry	Output (\$MM)	Pct. of Total	Mult. (Type II)	Industry Earnings	Pct. of Total	Mult. (Type II)	Value - Added	Pct. of Total	Mult. (Type II)	Employ - ment (jobs)	Pct. of Total	Mult. (Type II)
66 Canned, frozen foods	10.35	0.16%	1.399	1.25	0.05%	2.351	3.09	0.08%	1.876	308	0.24%	1.261
72 Food Milling	0.33	0.01%	1.375	0.03	0.00%	2.716	0.02	0.00%	4.108	3	0.00%	1.771
79 Bread, sugar, confectionary	0.23	0.00%	1.345	0.03	0.00%	2.116	0.05	0.00%	1.901	10	0.01%	1.159
86 Food Oil processing	0.18	0.00%	1.246	0.02	0.00%	2.015	0.03	0.00%	1.871	1	0.00%	1.862
91 Beverages	8.10	0.13%	1.339	1.01	0.04%	2.006	2.11	0.06%	1.766	140	0.11%	1.399
97 Other food proc	0.65	0.01%	1.285	0.05	0.00%	2.370	0.10	0.00%	2.119	31	0.02%	1.121
108 Textiles and Fabrics	1.51	0.02%	1.272	0.23	0.01%	1.683	0.31	0.01%	1.811	364	0.28%	1.025
133 Logging Camps and Logging Contr:	89.86	1.41%	1.275	22.62	0.90%	1.411	33.12	0.87%	1.451	2,752	2.13%	1.189
134 Sawmills and Planing Mills, Gener.	135.33	2.12%	1.485	47.04	1.88%	1.524	62.00	1.63%	1.631	4,673	3.61%	1.289
136 Special Product Sawmills, N.E.C	0.94	0.01%	1.688	0.39	0.02%	1.576	0.44	0.01%	1.811	169	0.13%	1.070
137 Millwork	0.85	0.01%	1.641	0.32	0.01%	1.655	0.39	0.01%	1.848	98	0.08%	1.126
139 Veneer and Plywood	25.16	0.39%	1.545	9.00	0.36%	1.577	11.64	0.31%	1.705	757	0.58%	1.384
140 Structural Wood Members, N.E.C	3.11	0.05%	1.737	1.47	0.06%	1.600	1.68	0.04%	1.818	173	0.13%	1.307
141 Wood processing	21.50	0.34%	1.577	5.90	0.24%	1.779	8.17	0.21%	1.876	523	0.40%	1.520
152 Wood furniture	0.89	0.01%	1.541	0.38	0.02%	1.478	0.47	0.01%	1.616	235	0.18%	1.045
161 Paper and Pulp	186.55	2.92%	1.393	35.93	1.44%	1.750	67.01	1.76%	1.639	1,890	1.46%	1.740
174 Printing and Publishing	4.72	0.07%	1.423	1.29	0.05%	1.594	2.20	0.06%	1.546	1,123	0.87%	1.039
186 Non-Ag chemicals	1.33	0.02%	1.350	0.28	0.01%	1.631	0.58	0.02%	1.485	82	0.06%	1.112
202 Agr Chemicals	0.58	0.01%	1.368	0.07	0.00%	2.153	0.13	0.00%	1.993	34	0.03%	1.120
205 Other Chem	0.08	0.00%	1.376	0.01	0.00%	1.856	0.02	0.00%	1.741	6	0.00%	1.086
210 Petrol products	4.61	0.07%	1.298	0.99	0.04%	1.524	1.52	0.04%	1.546	327	0.25%	1.083
221 leather products	0.05	0.00%	1.314	0.01	0.00%	1.504	0.02	0.00%	1.487	21	0.02%	1.015
230 glass products	0.03	0.00%	1.461	0.01	0.00%	1.860	0.01	0.00%	1.846	8	0.01%	1.032
232 Ceramic, brick, stone	1.53	0.02%	1.539	0.31	0.01%	1.994	0.52	0.01%	1.930	176	0.14%	1.087
254 Prim metal products	2.54	0.04%	1.516	0.31	0.01%	2.511	0.36	0.01%	3.067	68	0.05%	1.322
273 Fabricated metal Products	13.57	0.21%	1.379	3.58	0.14%	1.543	6.86	0.18%	1.451	875	0.68%	1.118
307 Engine and Equipment	11.67	0.18%	1.391	3.32	0.13%	1.521	4.80	0.13%	1.578	613	0.47%	1.152
339 Computer and Periphs	2.86	0.04%	1.231	0.58	0.02%	1.445	0.83	0.02%	1.495	53	0.04%	1.264
355 Electronic Equipment	12.93	0.20%	1.368	2.33	0.09%	1.763	3.92	0.10%	1.726	486	0.38%	1.199
384 Motor Vehicles	0.44	0.01%	1.199	0.05	0.00%	1.648	0.09	0.00%	1.601	2	0.00%	1.967
385 Transport equip	1.37	0.02%	1.332	0.19	0.01%	1.879	0.30	0.01%	1.879	62	0.05%	1.148
389 Aircraft	0.09	0.00%	1.383	0.02	0.00%	1.531	0.03	0.00%	1.687	11	0.01%	1.065

Northern Idaho Baseline Statistics and Type II Multipliers

Industry	Output (\$MM)	Pct. of Total	Mult. (Type II)	Industry Earnings	Pct. of Total	Mult. (Type II)	Value - Added	Pct. of Total	Mult. (Type II)	Employment (jobs)	Pct. of Total	Mult. (Type II)
400 Technical, scientific instruments	2.87	0.04%	1.338	0.69	0.03%	1.528	1.36	0.04%	1.432	127	0.10%	1.161
414 Misc Mfg	2.09	0.03%	1.439	0.41	0.02%	1.848	0.72	0.02%	1.755	410	0.32%	1.047
433 Railroads and Related Services	21.79	0.34%	1.726	10.84	0.43%	1.495	14.53	0.38%	1.588	172	0.13%	2.619
434 Local, Interurban Passenger Transit	2.52	0.04%	1.572	2.04	0.08%	1.275	2.47	0.07%	1.375	134	0.10%	1.239
435 Motor Freight Transport and Wareh	141.88	2.22%	1.771	61.35	2.45%	1.703	82.81	2.18%	1.802	2,278	1.76%	1.963
436 Water Transportation	33.66	0.53%	1.606	3.48	0.14%	2.871	4.79	0.13%	3.083	209	0.16%	2.585
437 Air Transportation	34.40	0.54%	1.504	7.62	0.30%	1.861	12.28	0.32%	1.826	294	0.23%	2.174
438 Water, sewer, gas	14.96	0.23%	1.400	4.00	0.16%	1.515	5.43	0.14%	1.613	123	0.10%	1.870
439 Transp. Services	13.13	0.21%	1.678	6.90	0.28%	1.483	8.19	0.22%	1.659	287	0.22%	1.639
441 Communications	121.02	1.89%	1.583	33.14	1.33%	1.718	65.83	1.73%	1.593	848	0.65%	2.554
443 Electric Services	79.72	1.25%	1.499	18.68	0.75%	1.685	52.85	1.39%	1.384	379	0.29%	2.691
445 Water Supply and Sewerage System	2.61	0.04%	1.990	0.64	0.03%	2.224	0.69	0.02%	2.820	38	0.03%	2.019
447 Wholesale Trade	233.34	3.65%	1.491	142.87	5.72%	1.309	214.50	5.64%	1.337	5,400	4.17%	1.468
448 Other retail	398.99	6.24%	1.569	225.73	9.03%	1.378	320.84	8.43%	1.434	14,148	10.93%	1.337
450 Food Stores	91.29	1.43%	1.537	58.40	2.34%	1.321	81.70	2.15%	1.376	3,316	2.56%	1.319
454 Eating & Drinking	178.29	2.79%	1.512	71.29	2.85%	1.476	90.32	2.37%	1.614	7,204	5.56%	1.260
456 FIRE	551.98	8.63%	1.580	106.03	4.24%	1.988	280.08	7.36%	1.635	6,607	5.10%	1.859
461 Owner-occupied Dwellings	353.86	5.53%	1.265	0.00	0.00%	1.345	268.86	7.07%	1.165	0	0.00%	1.256
463 Hotels and Lodging Places	62.99	0.98%	1.559	38.12	1.53%	1.418	52.95	1.39%	1.404	2,879	2.22%	1.252
464 Personal Services	41.38	0.65%	1.637	24.18	0.97%	1.377	28.16	0.74%	1.572	2,260	1.75%	1.688
469 Advertising	5.74	0.09%	1.610	3.51	0.14%	1.589	4.42	0.12%	1.490	112	0.09%	1.513
470 Misc. Business Services	223.52	3.49%	1.533	75.70	3.03%	1.375	105.95	2.79%	1.676	4,860	3.75%	1.692
475 Computer and Data Processing Serv	21.38	0.33%	1.530	11.72	0.47%	1.658	14.33	0.38%	1.495	350	0.27%	1.466
483 Recreation Services	90.33	1.41%	1.686	35.44	1.42%	1.350	54.79	1.44%	1.680	3,234	2.50%	1.688
490 Doctors and Dentists	137.55	2.15%	1.598	91.71	3.67%	1.332	112.08	2.95%	1.462	2,617	2.02%	1.342
491 Nursing and Protective Care	48.81	0.76%	1.690	37.45	1.50%	1.390	39.98	1.05%	1.509	2,034	1.57%	1.738
492 Hospitals	89.56	1.40%	1.596	50.43	2.02%	1.348	53.96	1.42%	1.604	1,505	1.16%	1.395
493 Other Medical and Health Services	40.26	0.63%	1.535	23.69	0.95%	1.336	29.83	0.78%	1.451	1,171	0.90%	1.739
494 Legal Services	43.00	0.67%	1.613	30.93	1.24%	1.773	36.72	0.97%	1.457	797	0.62%	1.365
495 Education, job training	17.57	0.27%	1.851	6.27	0.25%	1.573	6.27	0.16%	2.259	716	0.55%	1.433
499 Other social services	103.71	1.62%	1.673	44.00	1.76%	1.590	48.37	1.27%	1.831	3,287	2.54%	1.807
506 Engineering, Architectural Services	30.73	0.48%	1.756	15.15	0.61%	1.510	17.40	0.46%	1.792	629	0.49%	1.606

Northern Idaho Baseline Statistics and Type II Multipliers

	Industry Output (\$MM)	Pct. of Total	Mult. (Type II)	Industry Earnings	Pct. of Total	Mult. (Type II)	Value - Added	Pct. of Total	Mult. (Type II)	Employ - ment (jobs)	Pct. of Total	Mult. (Type II)
507 Accounting, Auditing and Bookkeeping	18.20	0.28%	1.681	9.86	0.39%	1.475	10.97	0.29%	1.702	446	0.34%	1.914
508 Management and Consulting Services	13.45	0.21%	1.625	6.87	0.27%	1.380	7.51	0.20%	1.682	194	0.15%	1.559
509 Research, Development & Testing	17.29	0.27%	1.651	11.65	0.47%	1.515	12.64	0.33%	1.558	440	0.34%	2.015
511 State and Local Electric Utilities	4.48	0.07%	1.384	1.14	0.05%	1.751	3.44	0.09%	1.271	30	0.02%	1.878
512 Other State and Local Government Enterprises	31.38	0.49%	1.630	8.00	0.32%	1.359	20.29	0.53%	1.471	344	0.27%	1.806
513 U.S. Postal Service	25.97	0.41%	1.764	21.11	0.84%	1.270	19.64	0.52%	1.624	515	0.40%	1.209
519 Federal Government - Military	21.80	0.34%	1.690	21.80	0.87%	1.270	21.80	0.57%	1.445	1,609	1.24%	1.614
520 Federal Government - Non-Military	92.61	1.45%	1.690	92.61	3.71%	1.270	92.61	2.43%	1.445	2,327	1.80%	1.330
522 State & Local Government - Education	265.78	4.16%	1.690	265.78	10.63%	1.270	265.78	6.99%	1.445	12,432	9.60%	1.402
523 State & Local Government - Non-Education	193.93	3.03%	1.690	193.93	7.76%	1.270	193.93	5.10%	1.445	7,448	5.75%	1.095
525 Domestic Services	6.74	0.11%	1.690	6.74	0.27%	0.000	6.74	0.18%	1.445	1,098	0.85%	0.000
528 Inventory Valuation Adjustment	-4.51	-0.07%	1.000	0.00	0.00%	0.000	-4.51	-0.12%	1.000	0	0.00%	0.000
Total	6,395.60	100.00%		2,499.53	100.00%		3,804.10	100.00%		129,472	100.00%	

A - Magic Valley

Magic Valley Baseline Statistics and Type II Multipliers

	Industry Output (\$MM)	Pct. of Total	Multiplier	Industry Earnings	Pct. of Total	Multiplier	Value - Added	Pct. of Total	Multiplier	Employ - ment (jobs)	Pct. of Total	Multiplier
1 Dairy Farm Products	207.32	3.52%	1.521	101.76	6.04%	1.404	114.64	4.41%	1.571	1,097	1.29%	3.094
2 Misc. livestock	48.21	0.82%	1.539	10.59	0.63%	1.970	16.01	0.62%	1.932	817	0.96%	1.772
3 Cattle	125.75	2.13%	1.630	17.46	1.04%	2.338	26.87	1.03%	2.389	2,265	2.66%	1.658
5 Cattle Feedlots	130.50	2.21%	1.606	18.10	1.07%	2.286	33.11	1.28%	2.124	651	0.76%	3.267
6 Sheep, Lambs and Goats	4.99	0.08%	1.588	0.95	0.06%	1.978	1.37	0.05%	2.069	61	0.07%	1.847
10 Misc crops	0.13	0.00%	1.377	0.04	0.00%	1.451	0.11	0.00%	1.266	3	0.00%	1.364
11 Food Grains	58.79	1.00%	1.515	16.18	0.96%	1.615	33.30	1.28%	1.488	616	0.72%	1.915
12 Feed Grains	32.02	0.54%	1.391	12.40	0.74%	1.350	26.83	1.03%	1.264	351	0.41%	1.694
13 Hay and Pasture	41.90	0.71%	1.440	11.71	0.70%	1.524	27.86	1.07%	1.357	538	0.63%	1.644
14 Grass Seeds	1.02	0.02%	1.305	0.21	0.01%	1.515	0.63	0.02%	1.278	12	0.01%	1.503
16 Fruits	0.48	0.01%	1.777	0.19	0.01%	1.830	0.22	0.01%	2.044	10	0.01%	1.995
18 Vegetables	195.52	3.32%	1.470	87.36	5.19%	1.413	165.72	6.38%	1.336	1,573	1.85%	2.339
19 Sugar Crops	88.22	1.50%	1.395	30.99	1.84%	1.401	72.74	2.80%	1.278	1,125	1.32%	1.628
22 Forest Products	0.19	0.00%	1.280	0.05	0.00%	1.438	0.17	0.01%	1.188	2	0.00%	1.581
23 Greenhouse and Nursery Products	14.29	0.24%	1.547	7.56	0.45%	1.398	11.56	0.45%	1.415	177	0.21%	1.894
24 Forestry Products	1.05	0.02%	1.840	0.09	0.01%	5.592	0.34	0.01%	2.578	7	0.01%	4.905
25 Commercial Fishing	0.08	0.00%	1.402	0.04	0.00%	1.295	0.07	0.00%	1.270	0	0.00%	1.231
26 Agricultural, Forestry, Fishery Services	47.75	0.81%	1.726	38.96	2.31%	1.314	39.01	1.50%	1.510	3,037	3.57%	1.364
27 Landscape and Horticultural Services	15.18	0.26%	1.749	9.38	0.56%	1.453	9.37	0.36%	1.727	571	0.67%	2.797
28 Metal mining	14.43	0.24%	1.574	4.25	0.25%	1.624	7.73	0.30%	1.570	70	0.08%	1.091
38 Petrol, nat gas	0.59	0.01%	1.653	0.25	0.01%	1.478	0.39	0.01%	1.501	65	0.08%	3.021
40 Other mining	19.73	0.33%	1.539	6.33	0.38%	1.554	10.64	0.41%	1.532	93	0.11%	2.111
48 New Residential Structures	92.57	1.57%	1.605	16.59	0.98%	2.193	27.58	1.06%	2.102	982	1.15%	2.401
49 Construction	716.52	12.15%	1.569	140.43	8.34%	2.061	215.03	8.28%	2.051	5,511	6.48%	8.171
58 Meat processing	54.15	0.92%	2.314	2.75	0.16%	6.918	1.31	0.05%	20.272	149	0.18%	3.981
61 Dairy Processing	240.39	4.08%	1.724	9.06	0.54%	6.429	17.41	0.67%	4.922	569	0.67%	2.231
66 Canned, frozen foods	695.21	11.79%	1.542	14.51	0.86%	8.980	28.82	1.11%	7.314	4,420	5.19%	2.901
72 Food Milling	78.19	1.33%	1.348	2.47	0.15%	4.479	2.40	0.09%	6.619	221	0.26%	3.031
79 Bread, sugar, confectionary	226.28	3.84%	1.448	11.72	0.70%	3.731	18.21	0.70%	3.890	773	0.91%	1.981
91 Beverages	7.21	0.12%	1.297	0.24	0.01%	3.693	0.57	0.02%	2.734	34	0.04%	1.791
97 Other food proc	28.99	0.49%	1.400	0.78	0.05%	4.833	1.02	0.04%	5.488	205	0.24%	1.231
108 Textiles and Fabrics	3.96	0.07%	1.250	0.05	0.00%	7.260	0.06	0.00%	8.288	70	0.08%	1.811

A - Magic Valley

Magic Valley Baseline Statistics and Type II Multipliers

	Industry			Industry			Value -			Employ -		
	Output (\$MM)	Pct. of Total	Multiplier	Earnings	Pct. of Total	Multiplier	Added	Pct. of Total	Multiplier	ment (jobs)	Pct. of Total	Multiplier
133 Logging Camps and Logging Contractors	1.69	0.03%	1.321	0.06	0.00%	2.938	0.09	0.00%	3.122	9	0.01%	2.498
134 Sawmills and Planing Mills, General	0.62	0.01%	1.862	0.03	0.00%	4.489	0.04	0.00%	5.124	4	0.00%	1.681
135 Hardwood Dimension and Flooring Mills	6.03	0.10%	1.606	0.17	0.01%	7.566	0.20	0.01%	9.838	84	0.10%	1.884
137 Millwork	27.16	0.46%	1.447	1.30	0.08%	4.121	1.52	0.06%	5.111	229	0.27%	1.921
140 Structural Wood Members, N.E.C	1.03	0.02%	1.469	0.06	0.00%	3.716	0.07	0.00%	4.764	9	0.01%	1.552
141 Wood processing	2.27	0.04%	1.464	0.07	0.00%	5.338	0.08	0.00%	6.863	29	0.03%	1.609
152 Wood furniture	16.76	0.28%	1.558	0.36	0.02%	8.437	0.45	0.02%	10.045	253	0.30%	1.925
161 Paper and Pulp	36.01	0.61%	1.423	1.29	0.08%	4.468	1.70	0.07%	5.055	245	0.29%	1.542
174 Printing and Publishing	45.59	0.77%	1.465	0.83	0.05%	9.058	1.34	0.05%	8.421	665	0.78%	2.690
186 Non-Ag chemicals	0.87	0.01%	1.382	0.01	0.00%	18.773	0.01	0.00%	11.672	3	0.00%	3.319
202 Agr Chemicals	16.60	0.28%	1.440	0.18	0.01%	13.079	0.08	0.00%	42.378	48	0.06%	2.277
205 Other Chem	2.97	0.05%	1.403	0.04	0.00%	10.866	0.07	0.00%	8.998	14	0.02%	1.872
210 Petrol products	10.79	0.18%	1.271	0.34	0.02%	3.760	0.56	0.02%	3.624	68	0.08%	1.544
230 glass products	2.55	0.04%	1.471	0.03	0.00%	11.709	0.05	0.00%	11.553	33	0.04%	1.900
232 Ceramic, brick, stone	10.88	0.18%	1.566	0.18	0.01%	12.373	0.29	0.01%	11.691	108	0.13%	1.807
273 Fabricated metal Products	14.58	0.25%	1.424	0.52	0.03%	4.843	0.71	0.03%	5.284	124	0.15%	1.745
307 Engine and Equipment	39.10	0.66%	1.455	1.57	0.09%	4.090	2.31	0.09%	4.259	359	0.42%	1.765
355 Electronic Equipment	16.27	0.28%	1.407	0.74	0.04%	3.652	1.18	0.05%	3.619	138	0.16%	2.037
385 Transport equip	14.06	0.24%	1.381	0.29	0.02%	6.211	0.48	0.02%	5.705	80	0.09%	1.635
400 Technical, scientific instruments	4.33	0.07%	1.381	0.15	0.01%	4.133	0.22	0.01%	4.297	41	0.05%	1.471
414 Misc Mfg	5.07	0.09%	1.420	0.08	0.00%	9.222	0.11	0.00%	9.973	75	0.09%	2.655
433 Railroads and Related Services	14.07	0.24%	1.732	7.23	0.43%	1.456	9.58	0.37%	1.547	102	0.12%	1.227
434 Local, Interurban Passenger Transit	4.90	0.08%	1.582	3.98	0.24%	1.260	4.81	0.19%	1.355	260	0.31%	1.857
435 Motor Freight Transport and Warehousing	127.63	2.16%	1.782	54.16	3.22%	1.689	72.87	2.81%	1.785	2,207	2.59%	2.147
436 Water Transportation	0.91	0.02%	1.441	0.06	0.00%	3.310	0.09	0.00%	3.380	6	0.01%	1.914
437 Air Transportation	19.14	0.32%	1.478	3.41	0.20%	1.955	5.97	0.23%	1.836	178	0.21%	1.940
438 Water, sewer, gas	28.58	0.48%	1.474	6.45	0.38%	1.648	8.83	0.34%	1.754	256	0.30%	1.645
439 Transp. Services	8.33	0.14%	1.654	4.35	0.26%	1.440	5.24	0.20%	1.591	159	0.19%	2.38
441 Communications	43.75	0.74%	1.628	11.47	0.68%	1.742	20.61	0.79%	1.662	336	0.40%	2.627
443 Electric Services	60.63	1.03%	1.511	14.25	0.85%	1.660	40.19	1.55%	1.369	289	0.34%	1.855
445 Water Supply and Sewerage Systems	0.18	0.00%	2.019	0.05	0.00%	2.098	0.05	0.00%	2.659	3	0.00%	1.395
447 Wholesale Trade	186.08	3.16%	1.488	112.24	6.66%	1.290	171.08	6.59%	1.312	4,576	5.38%	1.307

A - Magic Valley

Magic Valley Baseline Statistics and Type II Multipliers

	Industry Output (\$MM)	Pct. of Total	Multiplier	Industry Earnings	Pct. of Total	Multiplier	Value - Added	Pct. of Total	Multiplier	Employ - ment (jobs)	Pct. of Total	Multiplier
448 Other retail	244.80	4.15%	1.555	137.61	8.17%	1.345	196.63	7.57%	1.394	8,486	9.97%	1.287
450 Food Stores	53.05	0.90%	1.533	33.82	2.01%	1.297	47.48	1.83%	1.348	1,964	2.31%	1.271
454 Eating & Drinking	105.05	1.78%	1.646	43.28	2.57%	1.473	54.55	2.10%	1.604	4,084	4.80%	1.770
456 FIRE	358.73	6.08%	1.567	74.85	4.44%	1.859	188.44	7.26%	1.574	4,462	5.24%	1.275
461 Owner-occupied Dwellings	224.91	3.81%	1.272	0.00	0.00%	1.326	170.89	6.58%	1.165	0	0.00%	1.235
463 Hotels and Lodging Places	50.50	0.86%	1.573	30.81	1.83%	1.382	42.42	1.63%	1.386	2,003	2.35%	1.299
464 Personal Services	23.52	0.40%	1.640	13.99	0.83%	1.357	16.23	0.62%	1.525	1,259	1.48%	1.554
469 Advertising	0.50	0.01%	1.609	0.30	0.02%	1.601	0.38	0.01%	1.454	20	0.02%	1.318
470 Misc. Business Services	182.20	3.09%	1.549	56.71	3.37%	1.352	78.98	3.04%	1.690	3,386	3.98%	1.440
475 Computer and Data Processing Services	12.59	0.21%	1.529	6.74	0.40%	1.669	8.45	0.33%	1.454	417	0.49%	1.788
483 Recreation Services	37.01	0.63%	1.705	13.47	0.80%	1.331	19.05	0.73%	1.737	1,288	1.51%	1.294
490 Doctors and Dentists	93.02	1.58%	1.610	61.99	3.68%	1.317	75.77	2.92%	1.438	1,456	1.71%	1.617
491 Nursing and Protective Care	19.86	0.34%	1.709	15.20	0.90%	1.388	16.27	0.63%	1.485	898	1.06%	1.292
492 Hospitals	50.49	0.86%	1.626	27.14	1.61%	1.329	29.01	1.12%	1.601	946	1.11%	1.723
493 Other Medical and Health Services	28.39	0.48%	1.550	16.64	0.99%	1.317	21.04	0.81%	1.425	1,033	1.21%	1.350
494 Legal Services	27.88	0.47%	1.617	19.93	1.18%	1.709	23.80	0.92%	1.429	486	0.57%	1.387
495 Education, job training	7.64	0.13%	1.861	2.83	0.17%	1.596	2.83	0.11%	2.148	299	0.35%	1.830
499 Other social services	52.34	0.89%	1.711	20.33	1.21%	1.532	21.90	0.84%	1.873	1,684	1.98%	1.580
506 Engineering, Architectural Services	40.81	0.69%	1.769	21.31	1.26%	1.480	24.46	0.94%	1.715	753	0.88%	1.680
507 Accounting, Auditing and Bookkeeping	15.17	0.26%	1.681	8.19	0.49%	1.528	9.17	0.35%	1.657	369	0.43%	1.417
508 Management and Consulting Services	8.51	0.14%	1.628	3.59	0.21%	1.385	3.97	0.15%	1.743	151	0.18%	1.940
509 Research, Development & Testing Services	10.55	0.18%	1.661	6.59	0.39%	1.495	7.23	0.28%	1.556	336	0.39%	1.867
511 State and Local Electric Utilities	4.11	0.07%	1.393	1.04	0.06%	1.751	3.15	0.12%	1.259	28	0.03%	1.760
512 Other State and Local Govt Enterprises	19.23	0.33%	1.662	4.91	0.29%	1.335	12.44	0.48%	1.467	210	0.25%	0.000
513 U.S. Postal Service	16.32	0.28%	1.769	13.38	0.79%	0.000	12.44	0.48%	1.582	316	0.37%	0.000
519 Federal Government - Military	11.13	0.19%	1.701	11.13	0.66%	0.000	11.13	0.43%	0.000	945	1.11%	1.270
520 Federal Government - Non Military	30.02	0.51%	1.701	30.02	1.78%	1.254	30.02	1.16%	0.000	670	0.79%	1.350
522 State & Local Government - Education	97.39	1.65%	0.000	97.39	5.78%	1.254	97.39	3.75%	1.421	5,049	5.93%	0.000
523 State & Local Government - Non-Education	107.54	1.82%	0.000	107.54	6.38%	0.000	107.54	4.14%	1.421	4,306	5.06%	0.000
525 Domestic Services	4.38	0.07%	1.000	4.38	0.26%	0.000	4.38	0.17%	0.000	728	0.86%	0.000
528 Inventory Valuation Adjustment	-2.55	-0.04%	0.000	0.00	0.00%	0.000	-2.55	-0.10%	0.000	0	0.00%	1.000
Total	5,896.11	1.00		1,684.47	1.00		2,596.90	1.00		85,096.32	1.00	

Eastern Idaho Baseline Statistics and Type II Multipliers

	Industry											
	Output (\$MM)	Pct. of Total	Mult. (Type II)	Industry Earnings	Pct. of Total	Mult. (Type II)	Value - Added	Pct. of Total	Mult. (Type II)	Employ - ment (jobs)	Pct. of Total	Mult. (Type II)
1 Dairy Farm Products	83.43	0.84%	1.587	62.85	1.86%	1.273	72.16	1.47%	1.385	667	0.43%	2.455
2 Misc. livestock	12.08	0.12%	1.412	4.61	0.14%	1.400	8.42	0.17%	1.338	271	0.18%	1.398
3 Cattle	98.03	0.99%	1.578	24.32	0.72%	1.747	38.86	0.79%	1.756	2,943	1.92%	1.402
5 Cattle Feedlots	60.04	0.60%	1.577	11.06	0.33%	1.991	20.09	0.41%	1.883	424	0.28%	2.698
6 Sheep, Lambs and Goats	5.93	0.06%	1.569	1.52	0.04%	1.720	2.25	0.05%	1.775	92	0.06%	1.651
10 Misc crops	0.19	0.00%	1.514	0.05	0.00%	1.664	0.13	0.00%	1.395	2	0.00%	2.010
11 Food Grains	150.48	1.52%	1.510	47.63	1.41%	1.480	100.97	2.05%	1.359	1,903	1.24%	1.674
12 Feed Grains	92.45	0.93%	1.376	36.44	1.08%	1.307	82.10	1.67%	1.218	1,061	0.69%	1.597
13 Hay and Pasture	114.55	1.15%	1.311	41.32	1.22%	1.284	107.02	2.18%	1.177	1,664	1.08%	1.400
14 Grass Seeds	3.16	0.03%	1.370	0.63	0.02%	1.553	1.64	0.03%	1.336	37	0.02%	1.529
16 Fruits	0.63	0.01%	1.732	0.40	0.01%	1.420	0.45	0.01%	1.562	16	0.01%	1.640
18 Vegetables	351.11	3.54%	1.509	157.19	4.66%	1.422	285.08	5.79%	1.351	3,162	2.06%	2.243
19 Sugar Crops	14.49	0.15%	1.560	4.46	0.13%	1.560	9.55	0.19%	1.408	166	0.11%	1.863
22 Forest Products	0.35	0.00%	1.250	0.07	0.00%	1.434	0.30	0.01%	1.151	5	0.00%	1.348
23 Greenhouse and Nursery Products	6.18	0.06%	1.512	3.16	0.09%	1.355	4.82	0.10%	1.365	73	0.05%	1.852
24 Forestry Products	9.05	0.09%	1.700	0.88	0.03%	4.210	3.96	0.08%	1.934	37	0.02%	5.945
25 Commercial Fishing	0.42	0.00%	1.406	0.20	0.01%	1.284	0.36	0.01%	1.253	4	0.00%	1.723
26 Agricultural, Forestry, Fishery Services	44.56	0.45%	1.726	36.37	1.08%	1.291	36.41	0.74%	1.465	2,901	1.89%	1.212
27 Landscape and Horticultural Services	9.66	0.10%	1.711	5.56	0.16%	1.397	5.55	0.11%	1.625	433	0.28%	1.265
28 Metal mining	32.99	0.33%	1.612	11.07	0.33%	1.557	18.53	0.38%	1.538	166	0.11%	2.761
37 Coal Mining	0.25	0.00%	1.608	0.15	0.00%	1.331	0.17	0.00%	1.465	3	0.00%	1.769
40 Other mining	222.73	2.24%	1.519	42.95	1.27%	1.794	89.23	1.81%	1.607	722	0.47%	3.487
48 New Residential Structures	163.72	1.65%	1.645	31.57	0.93%	2.034	53.61	1.09%	1.921	1,639	1.07%	2.126
49 Construction	1,265.97	12.76%	1.547	266.72	7.90%	1.855	416.08	8.46%	1.822	9,196	5.99%	2.309
58 Meat processing	90.54	0.91%	2.033	2.62	0.08%	9.553	4.51	0.09%	9.270	436	0.28%	4.532
61 Dairy Processing	38.45	0.39%	1.600	1.31	0.04%	7.352	2.45	0.05%	5.571	87	0.06%	3.914

Eastern Idaho Baseline Statistics and Type II Multipliers

	Industry Output (\$MM)	Pct. of Total	Mult. (Type II)	Industry Earnings	Pct. of Total	Mult. (Type II)	Value - Added	Pct. of Total	Mult. (Type II)	Employ - ment (jobs)	Pct. of Total	Mult. (Type II)
66 Canned, frozen foods	515.20	5.19%	1.519	11.49	0.34%	7.632	21.32	0.43%	6.657	4,115	2.68%	1.905
72 Food Milling	30.89	0.31%	1.440	0.78	0.02%	5.648	1.23	0.03%	5.743	69	0.04%	3.634
79 Bread, sugar, confectionary	2.02	0.02%	1.436	0.07	0.00%	4.864	0.14	0.00%	3.983	17	0.01%	1.755
91 Beverages	17.57	0.18%	1.328	0.89	0.03%	2.777	1.49	0.03%	2.629	46	0.03%	2.858
97 Other food proc	45.64	0.46%	1.391	1.21	0.04%	4.377	1.98	0.04%	4.164	318	0.21%	1.736
108 Textiles and Fabrics	14.41	0.15%	1.536	0.23	0.01%	7.346	0.32	0.01%	8.138	263	0.17%	1.354
133 Logging Camps and Logging Contractors	42.61	0.43%	1.400	1.12	0.03%	3.938	1.98	0.04%	3.473	228	0.15%	1.883
134 Sawmills and Planing Mills, General	47.96	0.48%	2.167	1.76	0.05%	5.925	2.74	0.06%	5.852	290	0.19%	2.854
137 Millwork	6.43	0.06%	1.801	0.23	0.01%	5.659	0.31	0.01%	6.391	69	0.04%	1.884
140 Structural Wood Members, N.E.C	10.14	0.10%	2.145	0.43	0.01%	6.106	0.53	0.01%	7.259	86	0.06%	2.459
141 Wood processing	15.82	0.16%	1.796	0.49	0.01%	6.179	0.64	0.01%	7.082	185	0.12%	1.775
152 Wood furniture	21.64	0.22%	1.573	0.66	0.02%	5.929	0.93	0.02%	6.238	251	0.16%	1.707
174 Printing and Publishing	98.21	0.99%	1.446	1.63	0.05%	9.175	2.36	0.05%	9.167	1,520	0.99%	1.466
186 Non-Ag chemicals	570.33	5.75%	1.956	39.85	1.18%	3.752	69.61	1.41%	3.432	3,099	2.02%	2.834
202 Agr Chemicals	293.40	2.96%	1.856	4.15	0.12%	12.566	1.36	0.03%	54.355	810	0.53%	4.111
205 Other Chem	0.55	0.01%	1.997	0.01	0.00%	12.170	0.02	0.00%	10.442	2	0.00%	3.565
210 Petrol products	13.16	0.13%	1.447	0.37	0.01%	4.526	0.58	0.01%	4.458	109	0.07%	1.606
221 leather products	4.38	0.04%	1.691	0.07	0.00%	9.376	0.11	0.00%	9.549	84	0.05%	1.458
230 glass products	0.10	0.00%	1.600	0.00	0.00%	9.384	0.00	0.00%	9.478	1	0.00%	1.693
232 Ceramic, brick, stone	90.65	0.91%	1.587	2.27	0.07%	7.823	3.67	0.07%	7.398	690	0.45%	2.056
254 Prim metal products	2.80	0.03%	1.557	0.10	0.00%	5.230	0.13	0.00%	6.451	31	0.02%	1.630
273 Fabricated metal Products	27.35	0.28%	1.439	1.10	0.03%	4.143	1.51	0.03%	4.467	253	0.16%	1.687
307 Engine and Equipment	83.30	0.84%	1.502	4.06	0.12%	3.508	6.12	0.12%	3.537	732	0.48%	1.776
339 Computer and Periph	2.15	0.02%	1.333	0.19	0.01%	1.881	0.28	0.01%	1.924	11	0.01%	1.853
355 Electronic Equipment	125.76	1.27%	1.528	10.61	0.31%	2.592	15.00	0.30%	2.724	918	0.60%	1.999
385 Transport equip	15.18	0.15%	1.401	0.42	0.01%	4.733	0.58	0.01%	5.025	116	0.08%	1.732
400 Technical, scientific instruments	8.52	0.09%	1.506	0.34	0.01%	4.076	0.50	0.01%	4.187	74	0.05%	1.795
414 Misc Mfg	11.09	0.11%	1.535	0.21	0.01%	8.563	0.36	0.01%	7.466	174	0.11%	1.492
433 Railroads and Related Services	198.43	2.00%	1.740	102.92	3.05%	1.444	135.99	2.76%	1.526	1,393	0.91%	2.649
434 Local, Interurban Passenger Transit	3.51	0.04%	1.584	2.84	0.08%	1.249	3.45	0.07%	1.333	181	0.12%	1.222
435 Motor Freight Transport and Warehousin	111.12	1.12%	1.681	46.48	1.38%	1.582	62.37	1.27%	1.659	2,023	1.32%	1.696
436 Water Transportation	5.67	0.06%	1.501	0.41	0.01%	3.228	0.60	0.01%	3.223	37	0.02%	2.238
437 Air Transportation	25.37	0.26%	1.487	5.58	0.17%	1.765	9.01	0.18%	1.707	220	0.14%	1.999
438 Water, sewer, gas	33.10	0.33%	1.376	6.97	0.21%	1.521	12.02	0.24%	1.487	193	0.13%	1.945

Eastern Idaho Baseline Statistics and Type II Multipliers

Industry	Output (\$MM)	Pct. of Total	Mult. (Type II)	Industry Earnings	Pct. of Total	Mult. (Type II)	Value - Added	Pct. of Total	Mult. (Type II)	Employment (jobs)	Pct. of Total	Mult. (Type II)
439 Transp. Services	10.52	0.11%	1.664	5.54	0.16%	1.428	6.55	0.13%	1.565	235	0.15%	1.544
441 Communications	92.13	0.93%	1.658	23.84	0.71%	1.751	41.94	0.85%	1.674	706	0.46%	2.377
443 Electric Services	93.66	0.94%	1.511	22.01	0.65%	1.647	62.09	1.26%	1.356	396	0.26%	2.716
445 Water Supply and Sewerage Systems	0.46	0.00%	1.986	0.14	0.00%	1.939	0.14	0.00%	2.429	6	0.00%	2.014
447 Wholesale Trade	203.39	2.05%	1.489	122.50	3.63%	1.278	187.00	3.80%	1.292	5,034	3.28%	1.383
448 Other retail	398.68	4.02%	1.557	221.35	6.56%	1.335	320.35	6.51%	1.368	15,014	9.78%	1.270
450 Food Stores	92.25	0.93%	1.533	58.17	1.72%	1.287	82.57	1.68%	1.324	3,611	2.35%	1.257
454 Eating & Drinking	182.82	1.84%	1.644	70.95	2.10%	1.483	90.38	1.84%	1.598	7,657	4.99%	1.245
456 FIRE	561.75	5.66%	1.615	124.54	3.69%	1.855	255.99	5.20%	1.661	6,474	4.22%	1.845
461 Owner-occupied Dwellings	405.96	4.09%	1.260	0.00	0.00%	1.316	308.44	6.27%	1.147	0	0.00%	1.213
463 Hotels and Lodging Places	31.35	0.32%	1.574	18.88	0.56%	1.414	26.37	0.54%	1.361	1,539	1.00%	1.242
464 Personal Services	44.82	0.45%	1.649	23.26	0.69%	1.337	27.92	0.57%	1.533	2,170	1.41%	1.526
469 Advertising	4.22	0.04%	1.607	2.56	0.08%	1.574	3.25	0.07%	1.422	93	0.06%	1.555
470 Misc. Business Services	317.69	3.20%	1.569	101.72	3.01%	1.332	138.29	2.81%	1.653	5,747	3.74%	1.518
475 Computer and Data Processing Services	11.78	0.12%	1.544	6.41	0.19%	1.583	7.90	0.16%	1.426	227	0.15%	1.343
483 Recreation Services	55.59	0.56%	1.649	20.78	0.62%	1.312	30.28	0.62%	1.617	2,324	1.51%	1.731
490 Doctors and Dentists	175.70	1.77%	1.609	117.07	3.47%	1.308	143.12	2.91%	1.404	2,791	1.82%	1.265
491 Nursing and Protective Care	19.47	0.20%	1.729	14.87	0.44%	1.398	15.95	0.32%	1.461	950	0.62%	1.635
492 Hospitals	114.07	1.15%	1.733	61.21	1.81%	1.336	65.65	1.33%	1.595	2,128	1.39%	1.318
493 Other Medical and Health Services	29.32	0.30%	1.639	17.16	0.51%	1.308	21.73	0.44%	1.422	1,007	0.66%	1.732
494 Legal Services	44.45	0.45%	1.623	31.62	0.94%	1.589	37.94	0.77%	1.403	740	0.48%	1.485
495 Education, job training	133.78	1.35%	1.846	57.57	1.71%	1.506	57.57	1.17%	1.927	3,627	2.36%	1.412
499 Other social services	89.99	0.91%	1.704	39.45	1.17%	1.476	42.97	0.87%	1.719	2,607	1.70%	1.801
506 Engineering, Architectural Services	49.69	0.50%	1.734	26.70	0.79%	1.402	30.66	0.62%	1.628	862	0.56%	1.596
507 Accounting, Auditing and Bookkeeping	25.26	0.25%	1.638	14.46	0.43%	1.577	15.83	0.32%	1.557	517	0.34%	1.695
508 Management and Consulting Services	76.18	0.77%	1.708	31.22	0.92%	1.323	34.67	0.70%	1.774	1,380	0.90%	1.644
509 Research, Development & Testing Services	570.66	5.75%	1.672	409.40	12.13%	1.345	440.15	8.95%	1.472	11,229	7.32%	1.304
510 Local Government Passenger Transit	0.37	0.00%	2.462	0.50	0.01%	1.472	0.18	0.00%	2.525	30	0.02%	1.907
511 State and Local Electric Utilities	11.01	0.11%	1.390	2.79	0.08%	1.721	8.46	0.17%	1.245	72	0.05%	1.803
512 Other State and Local Govt Enterprises	36.56	0.37%	1.658	9.33	0.28%	1.312	23.65	0.48%	1.446	401	0.26%	1.712
513 U.S. Postal Service	33.15	0.33%	1.747	27.08	0.80%	1.244	25.19	0.51%	1.534	650	0.42%	1.357
519 Federal Government - Military	84.05	0.85%	1.705	84.05	2.49%	0.000	84.05	1.71%	1.396	3,270	2.13%	0.000
520 Federal Government - Non-Military	102.77	1.04%	0.000	102.77	3.04%	0.000	102.77	2.09%	0.000	2,171	1.41%	0.000
522 State & Local Government - Education	252.48	2.54%	0.000	252.48	7.48%	0.000	252.48	5.13%	0.000	12,403	8.08%	0.000

Eastern Idaho Baseline Statistics and Type II Multipliers

	Industry Output (\$MM)	Pct. of Total	Mult. (Type II)	Industry Earnings	Pct. of Total	Mult. (Type II)	Value - Added	Pct. of Total	Mult. (Type II)	Employ - ment (jobs)	Pct. of Total	Mult. (Type II)
523 State & Local Government - Non-Educati	204.78	2.06%	1.000	204.78	6.07%	0.000	204.78	4.16%	0.000	8,116	5.29%	0.000
525 Domestic Services	4.14	0.04%	0.000	4.14	0.12%	0.000	4.14	0.08%	0.000	592	0.39%	0.000
528 Inventory Valuation Adjustment	-5.64	-0.06%	0.000	0.00	0.00%	0.000	-5.64	-0.11%	0.000	0	0.00%	0.000
Total	9,925.22	100.00%		3,376.36	100.00%		4,919.70	100.00%		153,497	100.00%	

B - Sector Classification

Industry Name	IMPLAN Sector No.	Standard Industrial Classification Code
Dairy Farm Products	1	0241 Also : part of 0191, 0259, 0291
Misc. livestock	2,7,8,9	0251 - 0272
Cattle	3,4	Part of 0191, 0212, 0219, 0259, 0291
Cattle Feedlots	5	0211 Also : part of 0191, 0219, 0259, 0291
Sheep, Lambs and Goats	6	0214 Also : part of 0191, 0219, 0259, 0291
Misc crops	10,15,20,21	0131 - 0116
Food Grains	11	0111 0112 Also : part of 0191, 0219, 0259, 0291
Feed Grains	12	0115 Also : part of 0139, 0191, 0219, 0259, 0291
Hay and Pasture	13	Part of 0139, 0191, 0219, 0259, 0291
Grass Seeds	14	Part of 0139, 0191, 0219, 0259, 0291
Fruits	16	0171 0172 0174 0175 Also : part of 0179, 0191, 0219, 0259, 0291
Vegetables	18	0134 0161 Also : part of 0119, 0139, 0191, 0219, 0259, 0291
Sugar Crops	18	0133 Also : part of 0191, 0219, 0259, 0291
Forest Products	19	Part of 0181, 0191, 0219, 0259, 0291
Greenhouse and Nursery Products	22	0182 Also : part of 0181, 0191, 0219, 0259, 0291
Forestry Products	23	0810, 0830, 0970
Commercial Fishing	24	0910
Agricultural, Forestry, Fishery Services	25	0710 0720 0750 0760 0254 0850 0920 Also : part of 0279
Landscape and Horticultural Services	26	0780
Metal mining	10,15,20,21	1010 - 1099
Coal Mining	28	1200
Petrol, nat gas	28-36	1310 - 1320
Other mining	38-39	1410 - 1490
New Residential Structures	40	Part 15, 16, 17
Construction	40-47	1600 - 1700
Meat processing	49-57	2011 - 2015
Dairy Processing	58-60	2021-2026
Canned, frozen foods	61-65	2032-2038
Food Milling	66-71	2041-2048
Bread, sugar, confectionary	72-78	2051-2068
Food Oil processing	79-85	2074-2079
Beverages	86-90	2082-2087
Other food proc	91-96	2091-2140
Textiles and Fabrics	97-107	2210-2399

B - Sector Classification

Logging Camps and Logging Contractors	108	2410
Sawmills and Planing Mills, General	133	2421
Hardwood Dimension and Flooring Mills	134	2426
Special Product Sawmills, N.E.C	135	2429
Millwork	136	2431
Veneer and Plywood	137	2435 2436
Structural Wood Members, N.E.C	139	2439
Wood processing	108-132	2441-2499
Wood furniture	141-147	2434-2599
Paper and Pulp	138,148-160	2610-2679
Printing and Publishing	161-173	2710-2796
Non-Ag chemicals	174-185	2812-2861
Agr Chemicals	186-201	2873-2879
Other Chem	202-204	2891-2899
Petrol products	205-209	2910-3080
leather products	210-220	3110-3190
glass products	221-229	3210-3221
Ceramic, brick, stone	230-1	3240-3299
Prim metal products	232-253	3312-3399
Fabricated metal Products	254-272	3411-3499
Engine and Equipment	273-306	3511-3599
Computer and Periphs	307-354	3572-3579
Electronic Equipment	339-44	3612-3699
Motor Vehicles	355	3711
Transport equip	355-383	3713-3799
Aircraft	385-399	3721-3761
Technical, scientific instruments	389-396	3812-3860
Misc Mfg	400-413	3870-3999
Railroads and Related Services	414	4010, 4740 Also part of 4789
Local, Interurban Passenger Transit	433	4100
Motor Freight Transport and Warehousing	434	4200 Also part of 4789
Water Transportation	435	4400
Air Transportation	436	4500
Water, sewer, gas	414-432	4600-4970
Transp. Services	438-446	4720-4785
Communcations	439-40	4810-4830

B - Sector Classification

Electric Services	441	4910 Also part of 4930
Water Supply and Sewerage Systems	443	4940 4952
Wholesale Trade	445	5000 5100
Other retail	441-2	5200-5900
Food Stores	448	5400
Eating & Drinking	450	5800
FIRE	448-55	6000-6500
Owner-occupied Dwellings	456	
Hotels and Lodging Places	461	7000
Personal Services	456-462	7210-7290
Advertising	464	7310
Misc. Business Services	464-468	7320-7690
Computer and Data Processing Services	470	7370
Recreation Services	470-482	7800-7997
Doctors and Dentists	483	8010, 8020, 8030, 8040
Nursing and Protective Care	490	8050
Hospitals	491	8060
Other Medical and Health Services	492	0740, 8070, 8080, 8090
Legal Services	493	8110
Education, job training	483-489	8210-8330
Other social services	495-498	8350 8660
Engineering, Architectural Services	499	8710
Accounting, Auditing and Bookkeeping	506	8720, 8990
Management and Consulting Services	507	8740
Research, Development & Testing Services	508	8730
Local Government Passenger Transit	509	Part of 4100
State and Local Electric Utilities	510	Part of 4910
Other State and Local Govt Enterprises	511	--
U.S. Postal Service	512	4311
Other Federal Government Enterprises	513	--
Federal Government - Military	515	--
Federal Government - Non-Military	519	--
State & Local Government - Education	520	--
State & Local Government - Non-Education	522	--
Domestic Services	523	8800
Inventory Valuation Adjustment	525	--

C - SAM - State

Aggregated Industry by Industry SAM - State of Idaho, 1993									
	Industry	Employee Compensation	Proprietary Income	Other Property Income	Indirect Business Taxes	Households-Low Income	Households-Medium Income	Households-High Income	State/Local Govt NonEducation
Industry	9,985.4	0.0	0.0	0.0	0.0	1,922.2	5,300.0	3,278.8	1,487.2
Employee Compensation	12,351.8	0.0	0.0	0.0	0.0	0.0	0.0	0.0	0.0
Proprietary Income	3,103.1	0.0	0.0	0.0	0.0	0.0	0.0	0.0	0.0
Other Property Income	5,831.9	0.0	0.0	0.0	0.0	0.0	0.0	0.0	0.0
Indirect Business Taxes	1,723.2	0.0	0.0	0.0	0.0	0.0	0.0	0.0	0.0
Households-Low Income	0.2	669.1	131.6	235.7	0.0	0.0	0.0	0.0	211.6
Households-Medium Income	0.5	5,149.7	1,198.9	992.5	0.0	0.0	0.0	0.0	525.1
Households-High Income	0.2	4,373.8	1,606.0	391.6	0.0	0.0	0.0	0.0	134.9
State/Local Govt NonEducation	36.6	328.7	0.0	145.4	1,413.8	158.0	457.4	387.4	1.8
State/Local Govt Education	0.0	0.0	0.0	0.0	0.0	0.0	0.0	0.0	1,287.9
Enterprises (Corporations)	0.0	0.0	0.0	1,775.7	0.0	0.0	0.0	0.0	0.0
Capital	1.4	0.0	0.0	2,474.9	0.0	6.9	16.9	411.0	0.0
Inventory Additions/Deletions	27.5	0.0	0.0	0.0	0.0	0.7	1.6	0.8	0.2
Federal Government NonDefense	3.2	1,830.5	166.5	-549.7	309.4	70.0	874.5	1,012.2	0.0
Federal Government Defense	0.0	0.0	0.0	0.0	0.0	0.0	0.0	0.0	0.0
Foreign Trade	2,427.8	0.0	0.0	22.1	0.0	196.6	610.8	400.5	46.9
Domestic Trade	7,542.8	0.0	0.0	343.7	0.0	1,186.2	3,093.7	1,742.8	216.4

C - SAM - State

Aggregated Industry by Industry SAM - State of Idaho, 1993 (cont.)									
	Industry	State/Local Govt Education	Enterprises (Corporations)	Capital	Inventory Additions/Deletions	Federal Government NonDefense	Federal Government Defense	Foreign Trade	Domestic Trade
Industry	9,985.4	1,185.2	0.0	2,782.4	175.7	618.2	397.3	2,787.2	13,116.1
Employee Compensation	12,351.8	0.0	0.0	0.0	0.0	0.0	0.0	0.0	0.0
Proprietary Income	3,103.1	0.0	0.0	0.0	0.0	0.0	0.0	0.0	0.0
Other Property Income	5,831.9	0.0	0.0	0.0	0.0	0.0	0.0	0.0	0.0
Indirect Business Taxes	1,723.2	0.0	0.0	0.0	0.0	0.0	0.0	0.0	0.0
Households-Low Income	0.2	0.0	39.8	943.7	0.0	1,261.2	6.4	23.6	17.8
Households-Medium Income	0.5	0.0	260.6	1,066.7	0.1	896.9	29.0	103.7	131.3
Households-High Income	0.2	0.0	295.2	0.0	0.0	218.8	22.6	79.8	110.6
State/Local Govt NonEducation	36.6	0.6	97.2	127.0	0.1	712.1	0.3	1.0	44.5
State/Local Govt Education	0.0	0.0	0.0	0.0	0.0	0.0	0.0	0.0	0.0
Enterprises (Corporations)	0.0	0.0	0.0	0.0	0.0	0.0	0.0	0.0	0.0
Capital	1.4	0.0	560.2	0.0	6.1	10.9	0.0	1,056.5	906.0
Inventory Additions/Deletions	27.5	0.1	0.0	12.9	0.0	0.0	0.0	60.2	196.8
Federal Government NonDefense	3.2	0.0	522.7	0.3	0.1	0.0	0.0	2.0	100.1
Federal Government Defense	0.0	0.0	0.0	0.0	0.0	518.5	0.0	0.0	0.0
Foreign Trade	2,427.8	18.3	0.0	276.7	41.1	64.8	8.4	0.0	0.0
Domestic Trade	7,542.8	83.8	0.0	241.1	77.7	40.6	54.4	0.0	0.0

C - SAM - E. Idaho

SAM - Eastern Idaho									
	Industries	Employee Compensation	Proprietary Income	Other Property Income	Indirect Business Taxes	Households-Low Income	Households-Medium Income	Households-High Income	State/Local Govt NonEducation
Industries	2232.4806	0	0	0	0	390.0128637	1163.884167	722.7965731	364.571667
Employee Compensation	2,664.3	0.0	0.0	0.0	0.0	0.0	0.0	0.0	0.0
Proprietary Income	712.1	0.0	0.0	0.0	0.0	0.0	0.0	0.0	0.0
Other Property Income	1,152.9	0.0	0.0	0.0	0.0	0.0	0.0	0.0	0.0
Indirect Business Taxes	390.4	0.0	0.0	0.0	0.0	0.0	0.0	0.0	0.0
Households-Low Income	0.0	134.7	27.9	47.5	0.0	0.0	0.0	0.0	52.5
Households-Medium Income	0.1	1,072.9	276.4	201.6	0.0	0.0	0.0	0.0	130.4
Households-High Income	0.0	913.6	369.5	77.6	0.0	0.0	0.0	0.0	31.2
State/Local Govt NonEducation	9.7	83.9	0.0	38.0	321.5	37.3	116.0	93.2	0.5
State/Local Govt Education	0.0	0.0	0.0	0.0	0.0	0.0	0.0	0.0	341.8
Enterprises (Corporations)	0.0	0.0	0.0	416.9	0.0	0.0	0.0	0.0	0.0
Capital	0.3	0.0	0.0	429.9	0.0	1.6	4.1	132.3	0.0
Inventory Additions/Deletions	7.5	0.0	0.0	0.0	0.0	0.2	0.4	0.2	0.0
Federal Government NonDefense	0.6	459.2	38.3	-127.5	68.9	17.1	225.0	254.9	0.0
Federal Government Defense	0.0	0.0	0.0	0.0	0.0	0.0	0.0	0.0	0.0
Foreign Trade	566.0	0.0	0.0	5.6	0.0	48.7	156.2	101.3	13.1
Domestic Trade	2,188.8	0.0	0.0	63.4	0.0	312.2	858.0	465.6	65.2
Row Total	9,925.2	2,664.3	712.1	1,152.9	390.4	807.0	2,523.6	1,770.5	999.3

C - SAM - E. Idaho

SAM - Eastern Idaho (cont.)										
	Industries	State/Local Govt Education	Enterprises (Corporations)	Capital	Inventory Additions/De letions	Federal Government NonDefense	Federal Government Defense	Foreign Trade	Domestic Trade	Total
Industries	2232.4806	309.5154421	0	535.2946	24.666363	309.1615725	99.0375491	622.0571	3151.74	9925.219
Employee Compensation	2,664.3	0.0	0.0	0.0	0.0	0.0	0.0	0.0	0.0	2664.302
Proprietary Income	712.1	0.0	0.0	0.0	0.0	0.0	0.0	0.0	0.0	712.059
Other Property Income	1,152.9	0.0	0.0	0.0	0.0	0.0	0.0	0.0	0.0	1152.936
Indirect Business Taxes	390.4	0.0	0.0	0.0	0.0	0.0	0.0	0.0	0.0	390.4012
Households-Low Income	0.0	0.0	7.6	204.8	0.0	288.8	0.0	5.9	37.5	807.0301
Households-Medium Income	0.1	0.0	51.8	258.3	0.0	210.7	0.0	27.8	293.6	2523.611
Households High Income	0.0	0.0	58.1	0.0	0.0	50.0	0.0	21.1	249.3	1770.468
State/Local Govt NonEducation	9.7	0.1	23.6	66.4	0.0	195.8	0.1	0.2	12.9	999.2881
State/Local Govt Education	0.0	0.0	0.0	0.0	0.0	0.0	0.0	0.0	0.0	341.811
Enterprises (Corporations)	0.0	0.0	0.0	0.0	0.0	0.0	0.0	0.0	0.0	416.9246
Capital	0.3	0.0	153.1	0.0	88.7	0.0	0.0	228.2	282.0	1320.224
Inventory Additions/Deletions	7.5	0.0	0.0	0.0	0.0	0.0	0.0	30.4	92.8	131.7133
Federal Government NonDefense	0.6	0.0	122.7	208.1	0.0	0.0	0.0	0.7	7.0	1275.077
Federal Government Defense	0.0	0.0	0.0	0.0	0.0	107.4	0.0	0.0	0.0	107.3799
Foreign Trade	566.0	5.6	0.0	16.1	6.1	16.6	1.2	0.0	0.0	936.466
Domestic Trade	2,188.8	26.5	0.0	31.2	12.2	96.7	7.1	0.0	0.0	4126.938
Row Total	9,925.2	341.8	416.9	1,320.2	131.7	1,275.1	107.4	936.5	4,126.9	

C - SAM - MV

Aggregated Industry by Industry SAM - State of Idaho, 1993					
	Industry	Employee Compensation	Proprietary Income	Other Property Income	Indirect Business Taxes
Industry	1,329.7	0.0	0.0	0.0	0.0
Employee Compensation	1,195.5	0.0	0.0	0.0	0.0
Proprietary Income	488.9	0.0	0.0	0.0	0.0
Other Property Income	695.4	0.0	0.0	0.0	0.0
Indirect Business Taxes	219.6	0.0	0.0	0.0	0.0
Households-Low Income	0.0	73.9	24.1	37.9	0.0
Households-Medium Income	0.0	510.2	199.6	151.1	0.0
Households-High Income	0.0	365.8	238.9	55.7	0.0
State/Local Govt NonEducation	3.9	37.6	0.0	19.8	180.5
State/Local Govt Education	0.0	0.0	0.0	0.0	0.0
Enterprises (Corporations)	0.0	0.0	0.0	253.3	0.0
Capital	0.1	0.0	0.0	245.8	0.0
Inventory Additions/Deletions	6.8	0.0	0.0	0.0	0.0
Federal Government NonDefense	0.1	208.1	26.4	-73.5	39.2
Federal Government Defense	0.0	0.0	0.0	0.0	0.0
Foreign Trade	374.4	0.0	0.0	2.8	0.0
Domestic Trade	1,584.2	0.0	0.0	0.0	0.0

C - SAM - MV

Aggregated Industry by Industry SAM - State of Idaho, 1993 (cont.)				
	Industry	Households-Low Income	Households-Medium Income	Households-High Income
Industry	1,329.7	257.0	639.2	364.1
Employee Compensation	1,195.5	0.0	0.0	0.0
Proprietary Income	488.9	0.0	0.0	0.0
Other Property Income	695.4	0.0	0.0	0.0
Indirect Business Taxes	219.6	0.0	0.0	0.0
Households-Low Income	0.0	0.0	0.0	0.0
Households-Medium Income	0.0	0.0	0.0	0.0
Households-High Income	0.0	0.0	0.0	0.0
State/Local Govt NonEducation	3.9	22.4	61.1	45.3
State/Local Govt Education	0.0	0.0	0.0	0.0
Enterprises (Corporations)	0.0	0.0	0.0	0.0
Capital	0.1	1.1	2.3	16.0
Inventory Additions/Deletions	6.8	0.1	0.2	0.1
Federal Government NonDefense	0.1	10.6	120.5	120.4
Federal Government Defense	0.0	0.0	0.0	0.0
Foreign Trade	374.4	35.4	92.0	54.3
Domestic Trade	1,584.2	215.7	486.2	246.1

C - SAM - MV

Aggregated Industry by Industry SAM - State of Idaho, 1993 (cont.)					
	Industry	State/Local Govt NonEducation	State/Local Govt Education	Enterprises (Corporations)	Capital
Industry	1,329.7	191.7	121.0	0.0	304.9
Employee Compensation	1,195.5	0.0	0.0	0.0	0.0
Proprietary Income	488.9	0.0	0.0	0.0	0.0
Other Property Income	695.4	0.0	0.0	0.0	0.0
Indirect Business Taxes	219.6	0.0	0.0	0.0	0.0
Households-Low Income	0.0	30.1	0.0	6.7	169.5
Households-Medium Income	0.0	68.2	0.0	42.2	169.9
Households-High Income	0.0	15.0	0.0	46.0	0.0
State/Local Govt NonEducation	3.9	0.2	0.1	12.9	0.1
State/Local Govt Education	0.0	133.8	0.0	0.0	0.0
Enterprises (Corporations)	0.0	0.0	0.0	0.0	0.0
Capital	0.1	19.3	0.0	71.0	0.0
Inventory Additions/Deletions	6.8	0.0	0.0	0.0	0.0
Federal Government NonDefense	0.1	0.0	0.0	74.5	0.0
Federal Government Defense	0.0	0.0	0.0	0.0	0.0
Foreign Trade	374.4	7.7	2.4	0.0	8.9
Domestic Trade	1,584.2	34.5	10.3	0.0	60.8

C - SAM - MV

Aggregated Industry by Industry SAM - State of Idaho, 1993 (cont.)				
	Industry	Inventory Additions/Deletions	Federal Government NonDefense	Federal Government Defense
Industry	1,329.7	15.2	59.9	18.2
Employee Compensation	1,195.5	0.0	0.0	0.0
Proprietary Income	488.9	0.0	0.0	0.0
Other Property Income	695.4	0.0	0.0	0.0
Indirect Business Taxes	219.6	0.0	0.0	0.0
Households-Low Income	0.0	0.0	176.2	0.0
Households-Medium Income	0.0	0.0	115.5	0.0
Households-High Income	0.0	0.0	24.4	0.0
State/Local Govt NonEducation	3.9	0.0	115.4	0.0
State/Local Govt Education	0.0	0.0	0.0	0.0
Enterprises (Corporations)	0.0	0.0	0.0	0.0
Capital	0.1	18.1	9.4	0.0
Inventory Additions/Deletions	6.8	0.0	0.0	0.0
Federal Government NonDefense	0.1	0.0	0.0	0.0
Federal Government Defense	0.0	0.0	18.7	0.0
Foreign Trade	374.4	4.3	3.7	0.0
Domestic Trade	1,584.2	17.0	3.7	0.5

C - SAM - MV

Aggregated Industry by Industry SAM - State of Idaho, 1993 (cont.)			
	Industry	Foreign Trade	Domestic Trade
Industry	1,329.7	224.3	2,370.9
Employee Compensation	1,195.5	0.0	0.0
Proprietary Income	488.9	0.0	0.0
Other Property Income	695.4	0.0	0.0
Indirect Business Taxes	219.6	0.0	0.0
Households-Low Income	0.0	3.5	20.4
Households-Medium Income	0.0	13.8	130.7
Households-High Income	0.0	9.7	90.8
State/Local Govt NonEducation	3.9	0.1	1.5
State/Local Govt Education	0.0	0.0	0.0
Enterprises (Corporations)	0.0	0.0	0.0
Capital	0.1	323.3	7.8
Inventory Additions/Deletions	6.8	11.1	36.3
Federal Government NonDefense	0.1	0.1	0.7
Federal Government Defense	0.0	0.0	0.0
Foreign Trade	374.4	0.0	0.0
Domestic Trade	1,584.2	0.0	0.0

C - SAM - N. Idaho

Aggregated Industry by Industry SAM - State of Idaho, 1993									
	Industry	Employee Compensation	Proprietary Income	Other Property Income	Indirect Business Taxes	Households-Low Income	Households-Medium Income	Households-High Income	State/Local Govt NonEducation
Industry	1,072.4	0.0	0.0	0.0	0.0	390.0	1,009.1	551.4	146.5
Employee Compensation	2,012.2	0.0	0.0	0.0	0.0	0.0	0.0	0.0	0.0
Proprietary Income	487.4	0.0	0.0	0.0	0.0	0.0	0.0	0.0	0.0
Other Property Income	957.0	0.0	0.0	0.0	0.0	0.0	0.0	0.0	0.0
Indirect Business Taxes	347.5	0.0	0.0	0.0	0.0	0.0	0.0	0.0	0.0
Households-Low Income	0.0	122.3	23.8	40.1	0.0	0.0	0.0	0.0	342.4
Households-Medium Income	0.1	832.8	199.0	147.2	0.0	0.0	0.0	0.0	217.8
Households-High Income	0.0	604.7	238.3	47.8	0.0	0.0	0.0	0.0	44.4
State/Local Govt NonEducation	0.3	368.1	26.3	-109.2	61.4	15.9	178.6	180.1	0.0
State/Local Govt Education	0.0	0.0	0.0	0.0	0.0	0.0	0.0	0.0	36.4
Enterprises (Corporations)	7.5	84.4	0.0	31.3	286.1	40.9	109.6	77.2	106.5
Capital	0.0	0.0	0.0	0.0	0.0	0.0	0.0	0.0	0.0
Inventory Additions/Deletions	0.0	0.0	0.0	372.5	0.0	0.0	0.0	0.0	0.0
Federal Government NonDefense	0.3	0.0	0.0	423.2	0.0	1.6	3.7	1.5	0.0
Federal Government Defense	0.5	0.0	0.0	0.0	0.0	0.0	0.1	0.0	0.0
Foreign Trade	328.3	0.0	0.0	4.2	0.0	57.9	154.7	87.0	10.4
Domestic Trade	1,182.0	0.0	0.0	0.0	0.0	332.1	780.2	378.5	3.3

C - SAM - N. Idaho

Aggregated Industry by Industry SAM - State of Idaho, 1993 (cont.)								
	Industry	State/Local Govt Education	Enterprises (Corporations)	Capital	Inventory Additions/ Deletions	Federal Government NonDefense	Federal Government Defense	Foreign Trade
Industry	1,072.4	34.3	335.7	320.2	0.0	516.7	47.1	434.5
Employee Compensation	2,012.2	0.0	0.0	0.0	0.0	0.0	0.0	0.0
Proprietary Income	487.4	0.0	0.0	0.0	0.0	0.0	0.0	0.0
Other Property Income	957.0	0.0	0.0	0.0	0.0	0.0	0.0	0.0
Indirect Business Taxes	347.5	0.0	0.0	0.0	0.0	0.0	0.0	0.0
Households-Low Income	0.0	0.0	58.9	0.0	11.3	167.9	0.0	5.8
Households-Medium Income	0.1	0.0	125.1	0.0	66.3	261.5	0.0	23.3
Households-High Income	0.0	0.0	25.2	0.0	64.6	10.4	0.0	15.6
State/Local Govt NonEducation	0.3	0.0	0.0	0.0	109.7	29.2	0.0	1.3
State/Local Govt Education	0.0	0.0	0.0	0.0	0.0	0.0	0.0	0.0
Enterprises (Corporations)	7.5	0.1	0.5	0.2	20.5	178.1	0.0	0.7
Capital	0.0	0.0	355.3	0.0	0.0	0.0	0.0	0.0
Inventory Additions/Deletions	0.0	0.0	0.0	0.0	0.0	0.0	0.0	0.0
Federal Government NonDefense	0.3	0.0	0.0	0.0	100.2	0.0	1.3	201.5
Federal Government Defense	0.5	0.0	0.0	0.0	0.0	40.5	0.0	18.9
Foreign Trade	328.3	0.2	14.8	6.5	0.0	21.7	16.0	46.3
Domestic Trade	1,182.0	1.8	62.0	28.4	0.0	30.3	29.0	0.0

Aggregated Industry by Industry SAM - State of Idaho, 1993 (cont.)		
	Industry	Domestic Trade
Industry	1,072.4	1,537.0
Employee Compensation	2,012.2	0.0
Proprietary Income	487.4	0.0
Other Property Income	957.0	0.0
Indirect Business Taxes	347.5	0.0
Households-Low Income	0.0	66.0
Households-Medium Income	0.1	362.9
Households-High Income	0.0	224.7
State/Local Govt NonEducation	0.3	46.2
State/Local Govt Education	0.0	0.0
Enterprises (Corporations)	7.5	33.7
Capital	0.0	0.0
Inventory Additions/Deletions	0.0	0.0
Federal Government NonDefense	0.3	523.1
Federal Government Defense	0.5	34.1
Foreign Trade	328.3	0.0
Domestic Trade	1,182.0	0.0

C - SAM - SWID

Aggregated Industry by Industry SAM - State of Idaho, 1993									
	Industry	Employee Compensation	Proprietary Income	Other Property Income	Indirect Business Taxes	Households-Low Income	Households-Medium Income	Households-High Income	State/Local Govt NonEducation
Industry	4,196.6	0.0	0.0	0.0	0.0	721.2	2,134.6	1,450.5	556.8
Employee Compensation	5,467.5	0.0	0.0	0.0	0.0	0.0	0.0	0.0	0.0
Proprietary Income	1,120.2	0.0	0.0	0.0	0.0	0.0	0.0	0.0	0.0
Other Property Income	2,387.9	0.0	0.0	0.0	0.0	0.0	0.0	0.0	0.0
Indirect Business Taxes	712.2	0.0	0.0	0.0	0.0	0.0	0.0	0.0	0.0
Households-Low Income	0.0	267.8	40.1	59.6	0.0	0.0	0.0	0.0	79.9
Households-Medium Income	0.1	2,211.8	400.3	268.8	0.0	0.0	0.0	0.0	208.2
Households-High Income	0.0	2,069.3	619.7	114.1	0.0	0.0	0.0	0.0	55.1
State/Local Govt NonEducation	12.0	122.8	0.0	56.4	581.5	58.3	175.1	162.2	0.5
State/Local Govt Education	0.0	0.0	0.0	0.0	0.0	0.0	0.0	0.0	457.0
Enterprises (Corporations)	0.0	0.0	0.0	733.0	0.0	0.0	0.0	0.0	0.0
Capital	0.5	0.0	0.0	1,376.1	0.0	2.7	6.9	99.8	50.6
Inventory Additions/Deletions	6.8	0.0	0.0	0.0	0.0	0.1	0.1	0.1	0.1
Federal Government NonDefense	1.3	795.2	60.1	-239.5	130.6	26.1	348.2	458.3	0.0
Federal Government Defense	0.0	0.0	0.0	0.0	0.0	0.0	0.0	0.0	0.0
Foreign Trade	1,247.7	0.0	0.0	9.4	0.0	81.1	256.0	188.5	18.2
Domestic Trade	3,343.5	0.8	0.0	0.0	0.0	468.1	1,272.0	819.1	86.4

C - SAM - SWID

Aggregated Industry by Industry SAM - State of Idaho, 1993 (cont.)									
	Industry	State/Local Govt Education	Enterprises (Corporations)	Capital	Inventory Additions/ Deletions	Federal Government NonDefense	Federal Government Defense	Foreign Trade	Domestic Trade
Industry	4,196.6	420.4	0.0	1,429.3	67.6	359.0	244.1	1,404.9	5,511.5
Employee Compensation	5,467.5	0.0	0.0	0.0	0.0	0.0	0.0	0.0	0.0
Proprietary Income	1,120.2	0.0	0.0	0.0	0.0	0.0	0.0	0.0	0.0
Other Property Income	2,387.9	0.0	0.0	0.0	0.0	0.0	0.0	0.0	0.0
Indirect Business Taxes	712.2	0.0	0.0	0.0	0.0	0.0	0.0	0.0	0.0
Households-Low Income	0.0	0.0	14.2	386.2	0.0	469.0	0.0	8.1	32.5
Households-Medium Income	0.1	0.0	100.4	465.9	0.0	353.1	0.0	37.9	146.4
Households-High Income	0.0	0.0	126.5	0.0	0.0	92.1	0.0	32.6	69.2
State/Local Govt NonEducation	12.0	0.2	40.2	0.2	0.0	294.4	0.1	0.3	8.7
State/Local Govt Education	0.0	0.0	0.0	0.0	0.0	0.0	0.0	0.0	0.0
Enterprises (Corporations)	0.0	0.0	0.0	0.0	0.0	0.0	0.0	0.0	0.0
Capital	0.5	0.0	235.9	0.0	2.3	0.0	0.0	617.6	390.8
Inventory Additions/Deletions	6.8	0.0	0.0	77.9	0.0	0.0	0.0	5.8	24.5
Federal Government NonDefense	1.3	0.0	215.8	34.8	0.0	0.0	0.0	0.7	46.7
Federal Government Defense	0.0	0.0	0.0	0.0	0.0	269.7	0.0	0.0	0.0
Foreign Trade	1,247.7	6.4	0.0	234.7	20.9	37.5	7.3	0.0	0.0
Domestic Trade	3,343.5	30.0	0.0	154.2	34.4	3.7	18.3	0.0	0.0