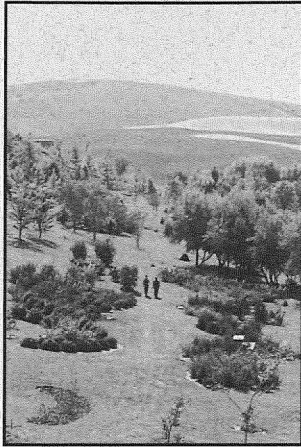


# ArborNotes

A NEWSLETTER OF THE ARBORETUM ASSOCIATES

## News from the Arboretum Director

### The UI Arboretum and Botanical Garden:



Two strollers in the Arboretum.  
R.J. Naskali photo, Oct. 8, 2000.

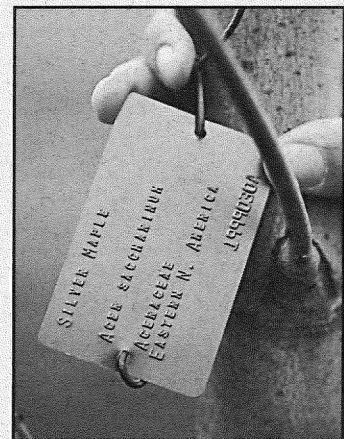
Autumn 2000 was the most spectacular for leaf colors of any that I can recall during my 33 years at the University of Idaho. Although the early freezes of September killed the leaves of the ashes (*Fraxinus*), black locusts (*Robinia*), and honeylocusts (*Gleditsia*), the remainder of our thousands of trees and shrubs revealed their genetic diversity as they progressed through their leaf coloring and leaf fall. As an example, in our red maple (*Acer rubrum*) collection, leaves of some cultivars colored brilliantly and fell by late September, whereas the leaves of other cultivars (e.g., 'October Glory') became scarlet spectacles in latter October. In November we prepared the Arboretum for winter by adding preventive staking and fencing, winter signage, and applying shields to prevent sunscald to the stems and trunks of the young and thin-barked specimens.

Approximately 300 new trees and shrubs have been added to our collection this growing season. Many were added as dedicated trees and shrubs in named groves; in the case of other new accessions, the plants were purchased with donated funds to expand the diversity of our general collection.

During the 2000 growing season—the 19<sup>th</sup> since the first planting in the UI Arboretum and Botanical Garden—there were very good displays of flowers on the ornamental cherries, pears, crabapples, lilacs, viburnums, and shrub roses.

When you visit the Arboretum you will notice that about 1000 embossed, official plant labels have been attached to plants. Typically, the brown, anodized aluminum tags—each the size of a standard credit card—are attached on the north side of the specimens. Each official tag has common name, scientific name, plant family name, the origin of specimen (either native geographical area or "horticultural origin"), and the unique accession number of the specimen. Accession numbers relate to our plant record system; the first four digits of the accession number show the year that the specimen was obtained. These permanent labels were made on the Arboretum's Norcom Panda embossing machine. This \$12,200 machine was purchased with unrestricted Arboretum Associates' funds and interest earnings from some Arboretum endowments.

Weddings became more common in the Arboretum this year. We had six weddings and one wedding reception in the Arboretum between April 1<sup>st</sup> and August 25<sup>th</sup>. Two weddings are already scheduled for 2001. In order to inform the public of our guidelines for protecting the plantings and habitat, the Arboreta Advisory Board has drafted and approved wedding policies for the Charles Houston Shattuck Arboretum and the UI Arboretum and Botanical Garden. Wedding setups are arranged with the UI Events office and charged at cost. In addition, there is a \$100 fee charged to the wedding party for deposit in the Arboretum Associates Centennial Endowment. A copy of the wedding policies can be obtained from the Arboretum Office, 109-110 Alumni Center Bldg.



An example of our accession tag/label.  
R.J. Naskali photo, Dec. 22, 1999.

News continued on page 2...

DECEMBER 2000

## ArborNotes

A Newsletter of  
the Arboretum Associates  
University of Idaho  
Arboretum and Botanical  
Garden

Published by  
ARBOR ETUM ASSOCIATES  
University of Idaho  
P.O. Box 443143  
Moscow, Idaho 83844-3143

### **President**

Marlene Johnston

### **Past President**

Beverly Rhoades

### **Vice President**

Robb Parish

### **Secretary**

Kris Roby

### **Treasurer**

Joy Fisher

### **Members at Large**

Bill Bowler

Joyce Parr

Gina Taruscio

### **Arboretum Director**

Richard J. Naskali

109 Alumni Center

University of Idaho

P.O. Box 443226

Moscow, ID 83844-3226

Phone: (208) 885-6250

FAX (208) 885-4040

E-mail: naskali@uidaho.edu

### **Arboretum Horticulturist**

Paul Warnick

pwarnick@uidaho.edu

DECEMBER 2000

...News continued from page 1

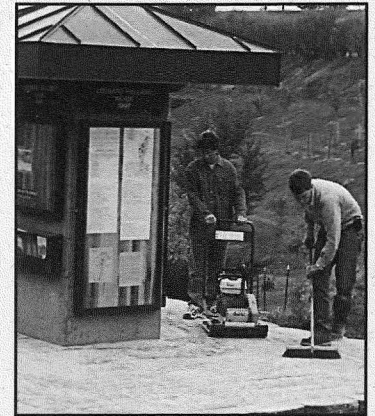
When the Leonard Halland information kiosk was constructed in 1996-97, we initially used free, recycled soft bricks for the pedestrian pavers. Because these deteriorated during freezes, we replaced them with Old Dominion hard pavers around the kiosk this last September. These pavers should withstand our typical winter freeze-thaw cycles.

During the summer of 2000, there was a major program of weed eradication. Not only were the weeds treated with approved herbicides, but also hundreds of our trees and shrubs were encircled with weed barrier fabric and coarse Douglas-fir bark mulch. During this one growing season alone, we applied over 150 cubic yards of mulch.

Bronze plaques, some of which were long overdue, have been added to over thirty commemorative trees and groves. This included the thirteen presidential plaques associated with the Centennial Oak Grove. Other site improvements included resurfacing the Arboretum's service road with gravel. In September, we installed seven trash receptacles and distributed them over the higher use areas of the Arboretum—replacing the ugly, open-topped, recycled oil barrels which were our first waste receptacles.

Four dedicated granite benches were delivered to the Arboretum on Friday, October 27, 2000. These benches, which honor Elsbeth Bush, Dale & Eugene Golis, the five Miller brothers (Robert, Ralph, Alvah, Perry, & Sidney), and R. Dean & Ruth H. Tousley, will expand the range of stops for viewing the scenery and resting, as well as contemplating the array of inscribed quotations on the benches. This latest installation brings to 25 the number of benches installed over the 45 acres of the Arboretum now under development.

During this fall semester, the entire junior class of 50 UI architecture students were involved with creating 50 potential design schemes to incorporate sculpture in the Arboretum. All of their hypothetical projects, modeled after internationally known sculptors of this last century, were designed to be situated at various sites and exposures over the 45 Arboretum acres which are currently being developed. The creativity and wit of 50 budding architects emphasizes the appropriateness of, and need for, outdoor sculpture on the UI Campus in general and the UI Arboretum and Botanical Garden in particular. I also acknowledge and appreciate the Arboretum Associates' contribution to partially underwrite the class-act illustrated lecture by Christo and Jeanne-Claude on the UI campus November 2, 2000.



Hard brick pavers are sanded and swept by Paul Warnick and tamped by horticulture student employee Peter Roan around the Leonard Halland Kiosk. R.J. Naskali photo, Oct. 11, 2000.

News continued on page 3...

...News continued from page 2

Students, classes, and tours bring untold numbers of visitors and users to the UI Arboretum and Botanical Garden each year. Although Paul Warnick and I can meet and converse with only a few of our new users, we are pleased to have users from many of the fifty states, and many overseas countries. We did meet international guests from Japan, U.K., China, Canada, France, The Netherlands, Argentina, and the Czech Republic this last summer. Ideally, we should install a guest registry book at a weather-protected site with the information kiosk.

Of the many gifts in kind received over the years, we gratefully acknowledge Dr. J. Mark Jensen's donation of a Datsun truck this last summer. Since its receipt in early July, the truck has provided many hours and miles of service—especially because it is the first truck that the Arboretum has owned and could afford!

I also wish to thank Robb Parish, Arboretum Associates board member, for volunteering his piloting skills which enabled me to make another documentary set of aerial photographs of the Arboretum and UI campus. As we develop our first web page this winter, we intend to include a series of aerial photographs that document the Arboretum's development since its origin in 1980. Without these significant gifts in kind, and over \$400,000 from over 1,200 of you, the University would not have the impressive Arboretum that now occupies a UI valley that was proposed to be a highway bypass in 1975. THANK YOU!

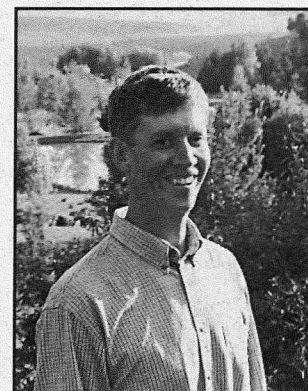
I hope that your continued support will enable us to continue the momentum of development of the University of Idaho's Arboretum and Botanical Garden. We need benefactors to underwrite the completion of an elegant, long-lasting pergola for our Asian vines, an information kiosk at the southern end of the Arboretum, future outdoor sculpture pieces, thousands of additional plants, and, eventually, the conversion of the Arboretum barn into an impressive visitor center.

Richard J. Naskali

## Welcome, Paul Warnick

Paul Warnick, a native of Idaho, returned to his home town to become Arboretum Horticulturist at the University of Idaho July 3, 2000. After graduating from Moscow High School, Paul completed his Bachelor of Science degree in Plant Science/Ornamental Horticulture, with honors, at Utah State University. After college, Paul "earned his stripes" in ornamental plant identification and culture, pruning, pest control, propagation, and public relations during his two decades of employment in Pacific Northwest nurseries, including one decade in Twin Falls, ID at the Kelley Garden Center. Prior to becoming Arboretum Horticulturist at UI, Paul was Crew Supervisor and Sales and Shipping Coordinator at the Buchholz and Buchholz Nursery, Gaston, Oregon.

Paul is an avid student of rare and unusual woody plants—especially of dwarf conifers. He is a member of the American Conifer Society and the UI Arboretum Associates. We are pleased to have Paul and his wife, Barbara, in Moscow. Now there are two full time employees with the collective 77 acres of the UI Arboretum and Botanical Garden and the Charles Houston Shattuck Arboretum!



Paul Warnick, Arboretum Horticulturist, in front of an Arboretum pond. R.J. Naskali photo, Oct. 3, 2000.

## Chamber Music Brings Crowd to Arboretum

The first public concert held in the Arboretum the evening of July 19 attracted several hundred music lovers. The concert was sponsored by the Arboretum Associates and the Lionel Hampton School of Music. Board members were amazed and thrilled at the response of the public to the free concert held under the willows at the south end of the grounds. Concert goers sat on blankets or lawn chairs and savored the music, warm evening air, and light perfumes of the shrub roses and Russian olive trees.

The program offered a variety of chamber music and delighted both adults and younger audience members. The program commenced with a stirring trumpet solo by Robert McCurdy playing *Sonatina* by Alfred Bartles. Children in the audience were entertained by *Music for Pieces of Wood* composed by Steve Reich and featuring faculty member, Dan Bukvich, and students Margaret Billin, Don Caverly, Brennan Dignan, and Jared Hallock playing percussion. Professors Linda and William Wharton performed the beautiful *Sonata for Two Cellos* by Jean Barrière.. Professor James Reid, classical guitarist, charmed the audience with *Two Preludes* by Heitor Villa-Lobos.

Chamber continued on page 4...

...Chamber continued from page 3

The marimba was a huge hit with young audience members. The marimba pieces, *Étude in C Major* by C. O. Musser and *Prelude No. 2* by Ney Rosauero were performed by students Jared Hallock and Margaret Billin, respectively. The haunting notes of the French horn rang true as Laura Crossler played *Kaddish* by Lev Kogan. Professor Michael Russell moved the audience with a violin solo of Johann Sebastian Bach's *Adagio and Fugue from Sonata No. 1 in G. Minor, BWV 1001*. The program finale was Mozart's *Quartet in C Major* performed by Michael Russell, Gladys Patton, Linda Warton, and William Wharton.

Director, Richard Naskali, and board members first proposed the concert idea to Professor Dan Bukvich who enthusiastically enlisted the support of the other musicians. Arboretum board members are extremely grateful to the musicians who played without charge so everyone in the community could attend the concert. Board members hope to offer a series of concerts next summer so more community members can enjoy music in the beautiful setting of the Arboretum. If you are interested in helping with a continuing Arboretum Concert series, please contact Kris Roby at 882-9299

## DONORS

We wish to acknowledge the many wonderful donors who continue to support the UI Arboretum and Botanical Garden. Your gifts make this wonderful place possible.

### Life Associates

Roberta & Charles Graham  
Patricia & Ronald Jordan  
Norma & Glenn Lewis  
Sharon Christopher & Christopher Davidson  
Moscow Rotary Club  
Carol & Malcolm Renfrew  
Dorothy & Stewart Schell  
Norma & Gene Slade  
Marguerite Smiley  
Ruth & Myrl Stearns  
Robert N. Steele  
JoAnn & Gene Thompson  
Doris Williams

Arboretum Donors July 1, 1999  
through June 30, 2000

### Contributors to Endowments

Patricia & Terry Armstrong  
Kathryn & Jonathan Billing  
Marilyn & H. Ronald Bjorkman  
Rhonda & Timothy Dater  
Winifred & John Dixon  
Fae Gagon  
Laura Miller  
Esther L. Murphy  
Richard Naskali  
Carol & Malcolm Renfrew  
Beverly Rhoades  
Norma & Gene Slade  
Robert N. Steele

### Contributors to Arboretum Associates

David S. Baker  
Nilsa Bosque-Perez  
Eloise Burnett  
Laila Carson  
Elisabeth & Nelson Curtis  
Sidonia DeWitt  
Frances & Roy Ellsworth  
Mary Jane Estocin-Klaiber & Peter Klaiber  
Robin & Douglas Finch  
Joy & Doug Fisher  
Lucinda & James Fisher  
Kris Roby & Rodney Frey  
Eleanora & Martin Fry  
Janice & John Gisler  
Carol & Larry Grupp  
Steven Haizlip  
Donna & Robert Hanson  
Rebecca & Patrick Hayes  
Patricia Hine & James Reece  
Jeanne & Robert Hoover  
Marlene & Richard Johnston  
Wanda Keefer

continued on page 5...

### IRIS SALE 2000

The Arboretum's year 2000 iris sale successfully raised over \$1000 for coming Arboretum Associates projects. The reblooming irises offered were especially popular while the Space Age irises will provide some interesting newer-type blooms. Eight lucky buyers won special irises including a number of the newest irises offered by hybridizers. A big thank you to all who supported the sale.

**An Error Of Omission**

An apology is due to Theresa Beaver of Theresa's Gardens of Moscow. Her name and business was omitted in the list of annual meeting donors in the last newsletter. Her nursery is now closed but Theresa is putting her many talents to work in her new business by doing garden design, consulting, installation, and maintenance. We wish her well.

*continued from page 4...*

Joanne & Larry Kirkland  
 Martha Anne Kitzrow  
 Phyllis & Duane LeTourneau  
 Helen McKinney  
 Moscow Garden Club  
 Northwestern Mutual Life Foundation, Inc.  
 Joan & Matt Racki  
 Hilda & William Roberts  
 Dorothy & Richard Ross  
 Delores & Dick Sanchez  
 Jean & Thomas Sawyer  
 Norman Schoen  
 Virginia & William Snyder  
 David Spencer  
 Robert W. Steele  
 Jeanne J. Steinhoff  
 Delbert Stelljes  
 Diana Stone & Jerry Swensen  
 Jamie & William Stookey  
 Joanne & Charles Sutton  
 Lynn & Stanton Tate  
 Paul Taylor  
 Terragraphics Environmental Engr, Inc.  
 Dene & Gordon Thomas  
 Arlene Wallace  
 Kathleen Warnick  
 Paul & Barbara Warnick  
 Jacqueline Wright & William Bowler  
 Grace & Wayne Yenni  
 Nancy & Brian Zabriskie  
 Susan Zenier

**Contributors to Trees, Groves, Benches, & Pergola**

Barbara & David Adams  
 Jana & Charles Argersinger  
 Nancy & William Blacker  
 John Bush  
 Linda & Michael Davidson  
 Early Morning Gardeners  
 Joy & Doug Fisher  
 Tanya Frei  
 Diane & Richard Goff

Dale Golis  
 Robert O. Hanson  
 Elaine & Roger Harder  
 Jack Hargiss  
 Mary Harris & Gerald Blount  
 Charles Hauntz  
 Hill and Valley Garden Club  
 Library Staff Association  
 Sue McCullough  
 Linda & Mark McFaddan  
 Elinor Michel  
 Dianne Milhollin  
 Elaine Miller  
 Esther Miller  
 Jackie & Alvah Miller  
 Julie & Mark Miller  
 Laura Miller  
 Pauline F. Miller  
 Robert Miller  
 Sharon & Perry Miller  
 Stephen Miller Family  
 Lee & William Mills  
 May Mosman  
 Sharon & Ron Reeve  
 Allan Saxe  
 Thelma & Alfred Shove  
 Joy Stotz  
 Joanne & Charles Sutton  
 Ellen Howe Victor  
 Agnes Weeks

**Contributors of Gifts in Kind**

Apple Creek Propagators  
 Bookpeople of Moscow, Inc.  
 Crossroads Nursery and Garden Gifts  
 Patt's Garden Center  
 Prairie Bloom Nursery  
 S.Y.G. Nursery & Landscaping  
 Smith's Garden Square, Inc.  
 Stookeys' Feed and Garden  
 Theresa's Garden  
 Western Forest Systems, Inc.

**FALL AND WINTER PROGRAMS**

**November 13** – Starting Plants from Seeds, a presentation given by Theresa Beaver at the Latah County Fair building in Moscow was of interest to many local gardeners. Topics covered included soil mixes for seed starting, timing of planting the seeds, optimum light and temperature requirements and many other tips shared by those present.

## Notes from the Arboretum Horticulturist: Future Planting Projects

There are many areas of the 63-acre UI Arboretum and Botanical Garden that will be developed as time and resources permit. (Currently, only 45 acres are being planted, while 18 acres are being farmed under contract). Some of the 45 acres are beginning to fill, so new projects will involve planting undeveloped areas—especially at the southern end of the Arboretum valley. At this end which is readily accessible from Palouse River Drive there will be display gardens rather than the geographically based collections in the upper part of the valley. Examples would include collections of particular perennials such as daylilies, bearded iris, herbaceous peonies, and groupings of specimens such as hedge plants, groundcovers, fragrant plants, etc. The possibilities are nearly endless and any suggestions for collections will be considered. As the southern end of the valley is developed it will become more widely used.

Eventually, the public parking area will need to be expanded, and then a striking entryway must be made. One idea for the entryway gardens would include a row of nine 'Camperdown' weeping elms to replicate the ones which lead to the UI Administration building in front of Ridenbaugh Hall.

Other areas which could be planted very soon include (1) the wet places along the valley stream close to the large old willows, (2) the steep bank at the common border with the UI Golf Course, and (3) the northeastern corner of the Arboretum. The wetlands along the stream should be great places to plant Eastern North American native shrubs such as witch hazels (*Hamamelis*), deciduous hollies (*Ilex*), sumersweet (*Clethra*), and spicebush (*Lindera benzoin*)—all of which will provide seasonal interest. There are great fall leaf colors and fall to winter flowers on the witch hazels. The hollies have red to orange and yellow berries. Summerweet plants have fragrant flowers in midsummer and bark which is interesting year around.

The steep, difficult to irrigate bank which separates the golf course from the Arboretum is continuing to erode and slump toward the Arboretum terraces, exacerbated by golfers and grazers looking for errant golf balls. Here, sea buckthorn (*Hippophae*), a shrubby relative of Russian olive, would be an effective barrier. In addition, hardy shrub roses and Asian derived junipers could add color and interesting contrasts of texture there.

Along the chain link fence at the northeastern corner—currently lined with burning bushes (*Euonymus alatus* 'Compacta')—there are many spaces where more Asian-derived flowering shrubs could be added to provide variety and interest over many seasons. Possibilities include potentillas with their summer flowers, dwarf butterfly bushes with purple flowers in midsummer, and the 'Cistena' flowering plums—shrubby variants of the purple-leafed flowering plums.

Other collections to be expanded include the lilacs, Asian pines, and the oaks of Asia and Eastern North America. Because all of the plants in the Arboretum are purchased through the generosity of donors, no tax money is expended on purchasing plants. With your continued support we can continue to expand the collections and demonstrate plant cultivars which will thrive in northern Idaho.

Paul F. Warnick



## The Charles Houston Shattuck Arboretum:

Cutting of diseased and insect killed trees and removal of brush and debris was our greatest accomplishment in the C.H. Shattuck Arboretum this last summer. In addition, we resumed mowing of combustible grasses and other herbaceous plants in the most heavily used open areas there. Invasive volunteer shrubs have been removed from inside the protective fenced areas around the KUID towers.



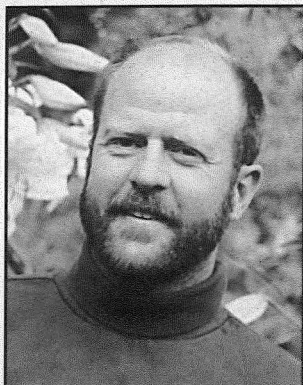
Bryan Johnson (left) and Carl Smith, UI Machine Shop, install a sign recognizing the legacy of Charles Houston Shattuck in the 90-year-old Shattuck Arboretum. R.J. Naskali photo, 1999.

The redesign and remodeling of the deteriorated amphitheatre has been postponed for some months—pre-empted by the scores of construction projects on the Moscow campus. In the next six months, a design firm will study the needs for the amphitheatre area, and submit its plans for the renewal as part of a larger program plan for other UI recreation facilities. In the

continued on next page...

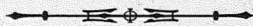
## Daniel J. Hinkley scheduled for Annual Meeting, April 26, 2001

Mark your calendars for 24<sup>th</sup> Annual Meeting of the UI Arboretum Associates, 7:30pm, Thursday, April 26, 2001 in the UI Courtroom of the College of Law. Dan Hinkley, co-



Daniel J. Hinkley

founder of the prestigious Heronswood Nursery, Ltd., Kingston, WA, is an internationally known plant collector, author, and speaker. He will give an illustrated lecture relating his plant introductions, garden design, plant stewardship, and botanical gardens. You will surely gain knowledge and enjoy his captivating presentation. For a preview of his program and to learn of some of his interests, you should scan the Heronswood website [www.héronswood.com](http://www.héronswood.com), or see his recently published book, *The Explorer's Garden: Rare and Unusual Perennials* [1999, 380p., Timber Press, Portland, OR]. Although Heronswood was purchased by the Burpee company in July 2000, Daniel Hinkley will remain associated with its operations.



*continued from previous page...*

intervening time, the outmoded fire pit near the amphitheatre will soon be removed. Ideally, we will be able to replace stairways into the Shattuck Arboretum from the "I" Tank area and from the western end of the Arboretum.

Charles Houston Shattuck's legacy to the University of Idaho is partially and publicly recognized now that we have installed two interpretive signs in the Shattuck Arboretum.

## 'Tis the season....

With the holidays approaching, shopping for thoughtful gifts for those on your list can be time consuming and even frustrating. Here are some gift suggestions that gardeners on your list might appreciate.

An attractive container with winter-flowering bulbs or plants (i.e. amaryllis, paper white narcissus, African violet) are good ideas for shut-ins. Some bloom for an extended period of time and others fill a room with fragrance.

Sometimes the gift of time or work is as much appreciated as a wrapped gift. Teens especially can give elderly gardeners IOU's for "X" hours of help with spring cleanup, weeding, lawn mowing or preparing beds for planting. Or they might offer to take someone who is "internet-challenged" to a local library and introduce him/her to the many interesting and helpful gardening websites.

For the active gardener the list is endless. Always welcome are gift certificates for local garden centers. Those for mail order nurseries usually also include a catalog to allow for hours of browsing during those cold and dark winter days. Two lesser known mail order nurseries that are entertaining to read and offer good selections of newer and more unusual plants are Heronswood Nursery (catalog: \$5.00), 7530 NE 288th Street, Kingston, WA 98346 and Plant Delights Nursery (catalog: "ten stamps or a box of chocolates") 9241 Sauls Road, Raleigh, NC 27603. Gift subscriptions for gardening magazines are also a good idea. Among the many magazines available, Fine Gardening, Organic Gardening, Garden Gate, and Horticulture are highly recommended.

The handyman who wishes to give a gift of himself can use his talents to build a garden bench, trellis, planter box or even a small greenhouse. Gifts to enhance the garden might include a birdbath, garden sculpture or a gazing ball.

For those who like to garden year round, perhaps a tabletop greenhouse or a propagation heating mat would be welcome. Stocking stuffers could include a new pair of gardening gloves (the inexpensive knit ones with rubber palms are nice), a new pair of shears or plant labels. While plastic labels are fine for the short term, Paw Paw Everlast Labels of Paw Paw, Michigan manufactures a nice variety of permanent metal labels that are ideal for roses and perennials.

Hopefully these suggestions will help you find a thoughtful and "just right" gift for the special gardeners on your shopping list. Lastly, consider sharing your garden with friends and neighbors by packaging small amounts of your favorite seeds collected from the garden and sending them with your holiday greetings. You'll be remembered long after winter's over and the garden is again in bloom.

**Please do not ski, sled, or toboggan in the Arboretum. Stay off the slopes and help us protect thousands of trees and shrubs under and above the snow. Thank you!**



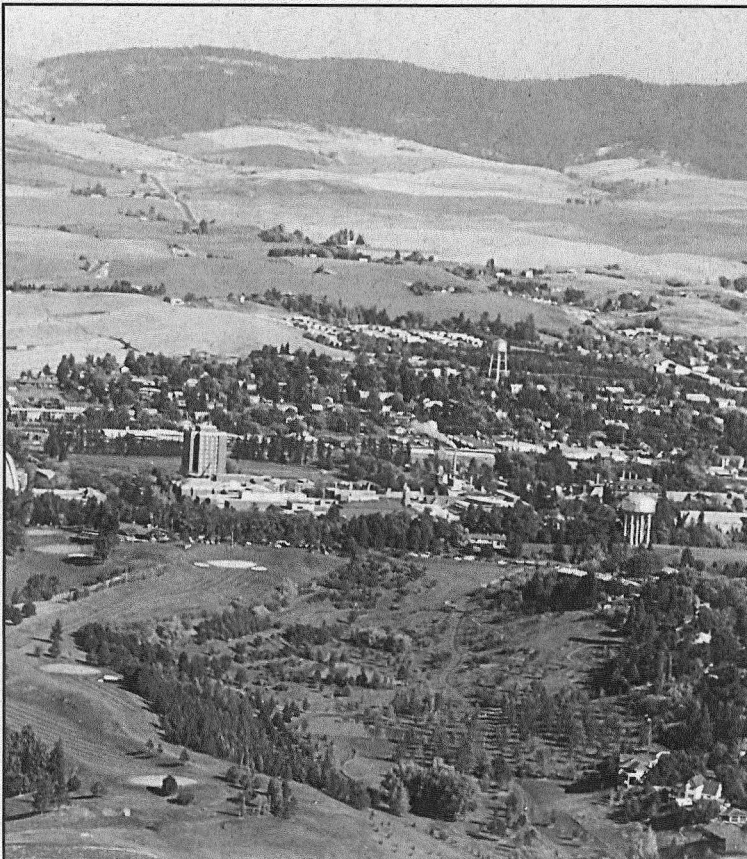
# Arboretum and Botanical Garden

Established 1980

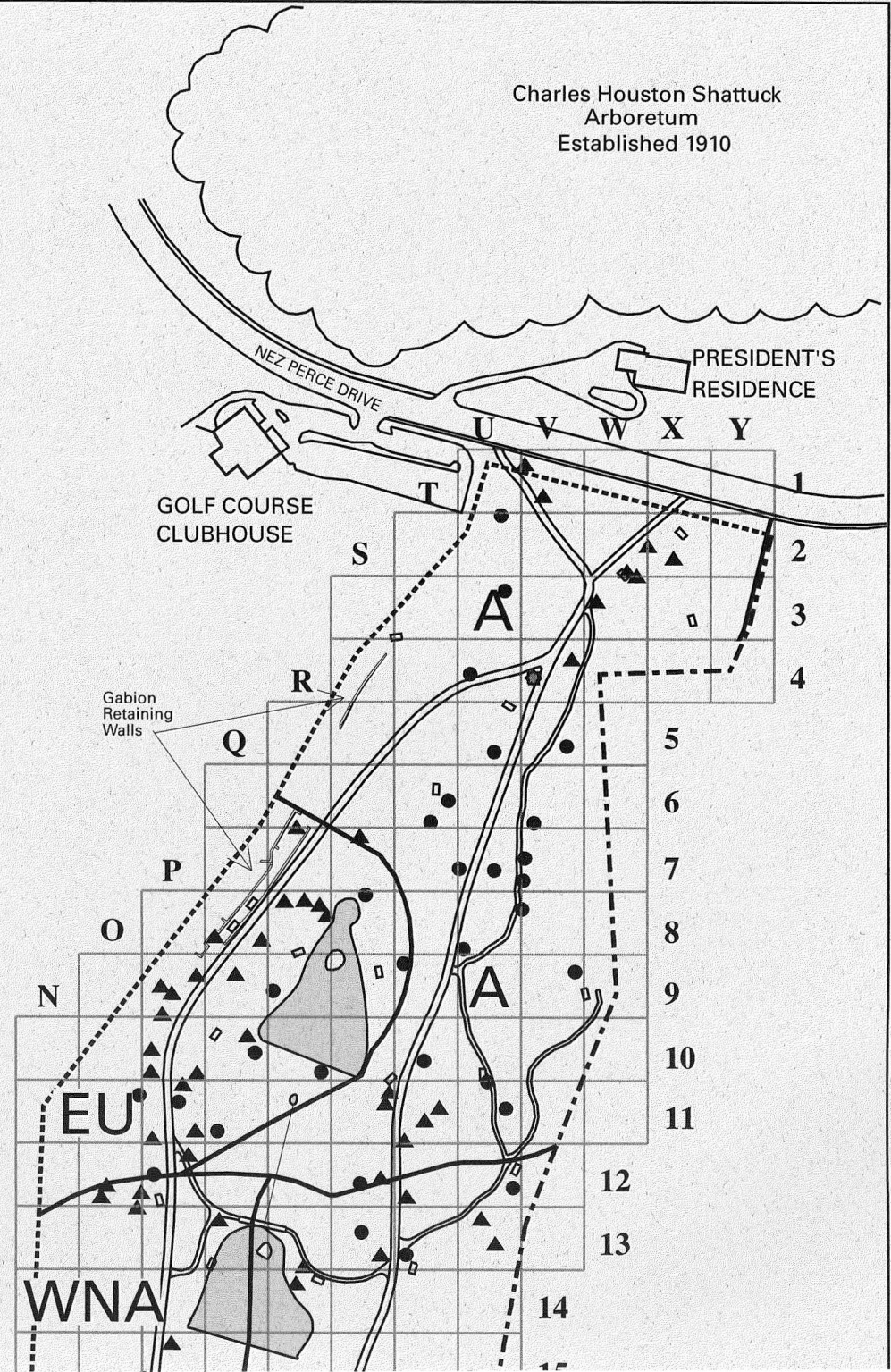
A geographically based living museum of documented plants for study, learning, inspiration, and beauty.  
You are cordially invited to visit.

To protect plant materials and increase your safety, please:

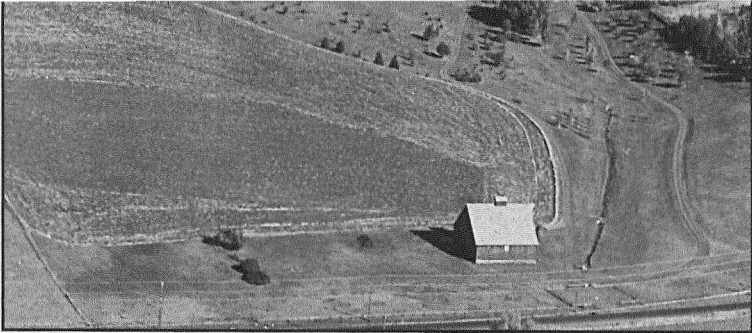
- No pets at any time.
  - Bicycles and jogging only on gravel surfaces.
  - No athletic games, fishing, frisbee, skating, skiing, sledding, swimming, or wading.
  - No hunting (including archery, paintball).
  - Do not drink the waste water used in all sprinklers.
- Thank you



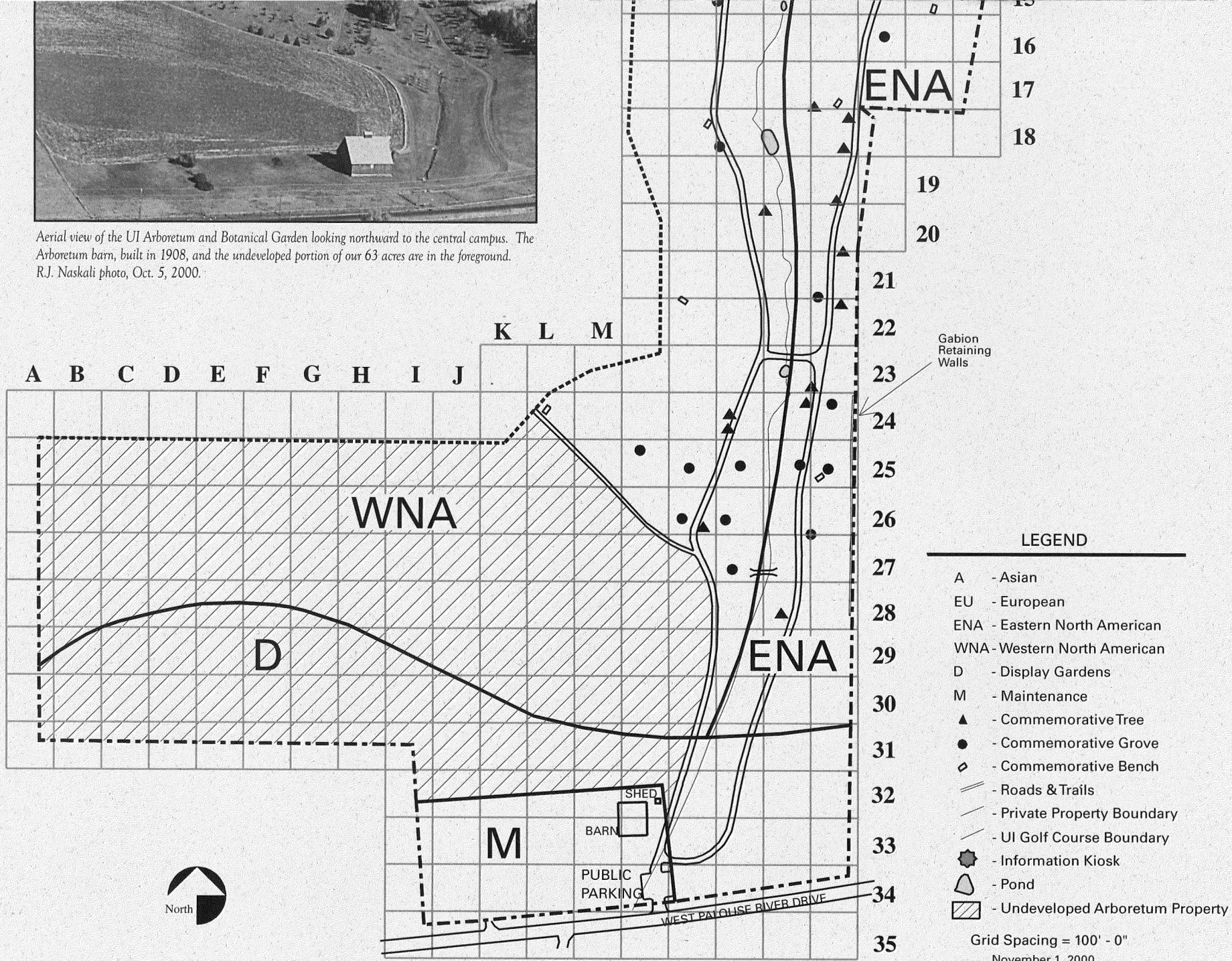
Charles Houston Shattuck  
Arboretum  
Established 1910







Aerial view of the UI Arboretum and Botanical Garden looking northward to the central campus. The Arboretum barn, built in 1908, and the undeveloped portion of our 63 acres are in the foreground.  
R.J. Naskali photo, Oct. 5, 2000.



Gabion Retaining Walls

**LEGEND**

- A - Asian
- EU - European
- ENA - Eastern North American
- WNA - Western North American
- D - Display Gardens
- M - Maintenance
- ▲ - Commemorative Tree
- - Commemorative Grove
- ◇ - Commemorative Bench
- — - Roads & Trails
- — — - Private Property Boundary
- - - - - UI Golf Course Boundary
- ⊛ - Information Kiosk
- ⬭ - Pond
- ▨ - Undeveloped Arboretum Property

Grid Spacing = 100' - 0"  
November 1, 2000

# Dedicated Features in the University of Idaho Arboretum & Botanical Garden

Privately funded commemorative trees and commemorative groves constitute the majority of specimens planted since April 1982 in the University of Idaho Arboretum and Botanical Garden. With each entry below, the year in parentheses indicates time of first funding, planting, or installation. Bracketed locators [ ] are coordinates on the accompanying map to indicate where you can find the commemorative bench, tree, or grove. Whereas some groves are essentially complete, others are in development or have just been initiated. Plaques (\*) will be installed as received and weather conditions permit.

## Leonard Halland Information Kiosk (1996) [V-4]

### BENCHES:

- Anderson Family (1997) [S-9]
- Elsbeth M. Bush (2000) [L-24]
- Thomas L. Cooper (1996) [S-10]
- Clifford & Norma Dobler (1999) [P-12]
- Ray & LaVerne Evans (1997) [U-12]
- Harry S. & Lucille Fenwick (1996) [U-5]
- Eugene & Dale Golis (2000) [W-2]
- Charles & Ruth Horgan (1999) [O-22]
- Herb Jennison (1999) [R-17]
- Bonnie McKay Johnson (1997) [U-10]
- Jacqueline R. Larson (1996) [T-3]
- Duane & Phyllis LeTourneau/FarmHouse (1998) [T-13]
- James & Doris Lyle (1999) [T-6]
- Paul & Elsie Mann (1998) [X-2]
- Miller Brothers  
[Robert, Ralph, Alvah, Perry, & Sidney] (2000) [Q-8]
- Richard J. Naskali (1996) [R-14]
- James Peek (1999) [O-18]
- Roland Portman (1996) [R-8]
- Everett & Lois Boyd Samuelson (1999) [Q-10]
- Hallie Seaman (1996) [T-15]
- Robert & Constance Shreve (1999) [X-3]
- Eugene Slade (1996) [Q-13]
- Merl W. & Erna A. Stubbs (1998) [R-25]
- R. Dean & Ruth H. Tousley (2000) [Q-8]
- Elisabeth A. Zinser (1996) [W-9]

### COMMEMORATIVE TREES:

#### Asian section ("A" on map):

- Borah Foundation Peace Walk (1994): Red Cascade Mountain Ash (*Sorbus tianschanica* 'Dwarfcrow') [W-2]
- Borah Foundation Peace Walk (1996): Turkish Filbert (*Corylus colurna*) [S-11]
- Borah Foundation Peace Walk (1997): Weeping Mulberry (*Morus alba* 'Chaparral') [T-11]
- \*Borah Foundation Peace Walk (2000): Giant Dogwood (*Cornus controversa*) [T-11]
- Kara Claypool (1996): Pink Princess™ Crabapple (*Malus* 'Parrisi') [V-1]
- Mary Stout Cobb, Jerry L. Cobb, & Jeffrey J. Cobb (1998): Kobus Magnolia (*Magnolia kobus*) [T-11]
- \*Barbara Esteb (2000): 'Madonna' Crabapple (*Malus* 'Madonna') [W-3]
- Eugene F. Golis: (1997) Golden Raindrops® Crabapple (*Malus transitoria* 'Schmidtcutleaf') [W-2]
- Lucille V. Golis (1999): 'Prairifire' Crabapple (*Malus* 'Prairifire') [W-2]
- Peggy Pace (1999): 'Louisa' Crabapple (*Malus* 'Louisa') [V-1]
- Marion "Lou" Rathbun (1996): Turkish Filbert (*Corylus colurna*) [S-11]
- Ashli Salisbury (1998): Brandywine® Crabapple (*Malus* 'Branzam') [V-4]
- Miriam & Judson Smith (1996): 'Robinson' Crabapple (*Malus* 'Robinson') [X-2]
- M. William & Barbara Stellmon (1999): 'Galaxy' Magnolia (*Magnolia* 'Galaxy') [S-12]

#### Eastern North American section ("ENA" on map):

- William V. Accola (1996): River Birch (*Betula nigra*) species & cultivars [R-13]
- \*Borah Foundation Peace Walk (1998): Cucumber Tree (*Magnolia acuminata*) [U-13]
- Doris "Dode" Cross (1995): 'Don Smith' Red Pine (*Pinus resinosa* 'Don Smith') [T-12]
- Melvin DeWitt (1996): 'Patmore' Green Ash (*Fraxinus pennsylvanica* 'Patmore') [Q-23]
- John & Winifred Dixon (1998): 'Redmond' American Linden (*Tilia americana* 'Redmond') [Q-24]
- Lambert C. Erickson (1996): Chokecherry (*Prunus virginiana* 'Canada Red') [R-19]
- \*John P. & Phyllis M. Howe (1999): Autumn Blaze® Maple (*Acer x freemanii* 'Jeffersred') [R-18]
- Richard St John Lambert (1998): Black Walnut (*Juglans nigra*) [R-22]
- Tom & Carolyn Leege Family (1992): Conifers of the World gift [U-13]
- \*Len D. McCoy (1999): Silver Maple (*Acer saccharinum*) [R-17]
- Lance Gerard Mills (1999): Eastern Red Oaks (*Quercus rubra*) [Q-28]
- Patsy & John Mosman (1999): Sugar Maple (*Acer saccharum*) [S-13]
- \*Allan Saxe (2000): 'Sensation' Boxelder (*Acer negundo* 'Sensation') [R-18]
- \*Shelley Jones-David Uberuaga wedding (2000): Yellow Birch (*Betula alleghaniensis*) [R-14]
- Calvin Warnick (1997): Scarlet Oak (*Quercus coccinea*) [R-21]

#### European section ("EU" on map):

- \*William A. Blacker, Sr. (2000): 'Bloodgood' London Planetree (*Platanus x acerifolia* 'Bloodgood') [P-9]
- William & Nancy Blacker Family (1995): London Plane Trees (*Platanus x acerifolia*) [P-10]
- Earle C. & Ena F. Blodgett (1994): European Mountain Ash (*Sorbus aucuparia*) [P-10]
- Borah Foundation Peace Walk (1995): Weeping European Larch (*Larix decidua* 'Pendula') [R-8]
- \*Borah Foundation Peace Walk (1998): Columnar Aspen (*Populus tremula* 'Erecta') [Q-10]
- Gordon L. Braun (1995): 'Greenspire' Littleleaf Linden (*Tilia cordata* 'Greenspire') [R-8]
- Michael E. Coan (1997): English Maple (*Acer campestre*) [Q-8]
- Faculty Women's Club (1994): 'Olympic' Littleleaf Linden (*Tilia cordata* 'Olympic') [R-8]
- Ernest Fliger (1996): Red Horsechestnut (*Aesculus x carnea*) [P-9]
- Scott Fordham (1999): 'Baumannii' Horse Chestnut (*Aesculus hippocastanum* 'Baumannii') [P-9]
- Martin & Eleanora Fry (1993): 'Paul's Scarlet' English Hawthorn (*Crataegus laevigata* 'Paul's Scarlet') [Q-9]
- Hill and Valley Garden Club (1997): Roses (*Rosa*) derived from Europe [P-12]
- James & Doris Lyle Family (1993): Cardinal Royal® Mountain Ash (*Sorbus aucuparia* 'Michred') [P-11]
- James M. Lyle, Jr. (1999): 'Rossica' Mountain Ash (*Sorbus aucuparia* 'Rossica') [P-10]
- William J. McLaughlin (1989): English Oak (*Quercus robur*) [P-11]
- Clarence McPherson (1990): English Oak (*Quercus robur*) [P-11]
- \*Edith A. & Dean D. Meyer (2000): European Beeches (*Fagus sylvatica*) [R-7]
- Shirley A. Newcomb (1995): 'DeGroot' Littleleaf Linden (*Tilia cordata* 'DeGroot') [R-8]
- UI Home Economists (Adah Lewis, Elsie Nielsen, & Margaret Ritchie) (1994): 'Crimson Cloud' Hawthorn (*Crataegus laevigata* 'Crimson Cloud') [Q-8]
- Andrew S. Owens (1993): Horsechestnuts (*Aesculus hippocastanum*) [P-10]

## Western North American section ("WNA" on map):

- Lloyd Norman Bean (1997): White Fir (*Abies concolor*) [O-13]  
Helen Whitehead Cross (1996): Bristlecone Pine (*Pinus aristata*) [P-24]  
AKE/Phi Gamma Delta 75th Anniversary (1988): Quaking Aspens (*Populus tremuloides*) [P-20]  
Clifford I. Dobler (1999): Colorado Spruce (*Picea pungens*) [O-12]  
Leonard Dobler (1994): Colorado Spruce (*Picea pungens*) [P-12]  
Norma Woodhouse Dobler (1999): Colorado Spruce (*Picea pungens*) [O-12]  
Myra Elizabeth Smart (1995): Western North American Native Roses (*Rosa* spp.) [O-26]  
Charles Jack Smiley (1996): Bristlecone Pines (*Pinus aristata*) [P-24]  
R. Broc Steele (1988): Engelmann Spruce (*Picea engelmannii*) [P-15]  
\*Roy Scott Verner (1999): Western Red Cedar (*Thuja plicata*) [Q-13]

## COMMEMORATIVE GROVES:

### Asian section ("A" on map):

- Vesta Scholl Beer (1995): Hyacinth-flowered Lilac (*Syringa x hyacinthiflora*) cultivars [T-7]  
Blue Key Service Honorary (1989): Ginkgo (*Ginkgo biloba*) species & cultivars [S-12]  
Clearwater District Garden Clubs (1995): Asian Rose (*Rosa*) species, cultivars, & hybrids [T-10, U-10]  
Alfred J. Eiguren (1982): Asian-derived trees and shrubs (*Acer, Malus, Prunus, Pinus*) [U-3]  
Leonard Halland (1996): Asian-derived xeriscape trees & shrubs (*Caragana frutex, C. pygmaea, Elaeagnus angustifolia, Hippophae rhamnoides*, etc.) [V-9]  
Ernest W. Hartung (1986): Asian-derived trees & shrubs (*Acer, Chaenomeles, Forsythia, Malus, Pinus*, etc.) [U-4]  
Linda Kinney Hollenbeck (1989): Asian Lilac (*Syringa*) species, cultivars, & hybrids [U-5]  
\*Charles L. & Ruth Louise Horgan (1993): Trees & shrubs derived from Asia (*Ginkgo, Weigela, Acer, Syringa*) [U-11]  
Kappa Kappa Gamma 75th Anniversary (1992): Asian Ornamental Cherry (*Prunus*) species, cultivars, & hybrids [V-6]  
Paul Mann (1997) Asian-derived Ornamental Shrubs (*Exochorda, Spiraea, Aralia, Chaenomeles, Weigela*) [T-6]  
Moscow Central Lions Club (1993): Asian Ornamental Pear (*Pyrus*) species & cultivars [V-5]  
Moscow Garden Club (1993): Asian Shrub Peony (*Paeonia*) cultivars and hybrids [V-8]  
Holly Noah (1999): Asian Magnolia (*Magnolia*) Cultivars [U-8]  
Roland W. Portman (1994): Asian Pine (*Pinus bungeana, P. parvifolia, P. thunbergii*, etc.) species & cultivars [V-7]  
University of Idaho Retirees (1995): Asian Viburnum (*Viburnum*) species & cultivars [U-7]  
Hallie Seaman (1993): Asian Shrub Peony (*Paeonia*) cultivars [V-7]  
Karla Kaye Stelljes (1982): Asian-derived trees and shrubs (*Acer, Cotinus coggyria, Malus, Prunus*, etc.) [U-2]  
Elmer & Jeanne Stout (1995): Dawn Redwood (*Metasequoia glyptostroboides*) species & cultivars [U-11]  
Donald Lee Weeks (1997): Asian-derived Flowering Shrubs (*Aralia, Chaenomeles, Deutzia, Weigela, Spiraea*) [T-6]

### Eastern North American section ("ENA" on map):

- Herbert A. Berman (1995): Eastern White Pine (*Pinus strobus*) species & cultivars [U-12]  
UI Presidential Centennial Oaks (1987): 13 Eastern North American Oak (*Quercus*) species honoring UI's 13 Presidents of the first 100 years [R-14 to R-17 to U-14 to U-17]

- Theda Lenz Dunson (1991): Red Maple (*Acer rubrum*) species, cultivars, & hybrids [S-13]  
FarmHouse Fraternity 35th Anniversary (1992): Sugar & Black Maple (*Acer saccharum*) species & cultivars [T-13]  
Idaho Public Utilities Executives' Course (1995): White Ash (*Fraxinus americana*), Green Ash (*F. pennsylvanica*), Blue Ash (*F. quadrangulata*), Black Ash (*F. nigra*) species & cultivars R-21]  
Timothy Ryan Ostebo (1995): Honeylocust (*Gleditsia triacanthos*) species & cultivars [R-26]  
Frank E. & Susie S. Post (1996): Eastern North American Hardwood Trees (*Acer, Celtis, Cornus, Nyssa, Populus, Tilia*, etc.) [Q-25]  
Robert H. & Constance Shreve (1996): Eastern North American Hawthorns (*Crataegus*) species & cultivars [R-24]  
Merl W. & Erna A. Stubbs: (1997) Trees of Wisconsin (*Corylus, Quercus, Pinus, Gymnocladus, Carpinus*, etc.) [R-25]

### European section ("EU" on map):

- William & Florence Anderson Family (1995): European-derived trees & shrubs (*Carpinus betulus, Corylus avellana* "Contorta", *Fraxinus* spp., *Mespilus germanica, Tilia cordata, T. x euchlora, T. tomentosa, Picea omorika, Pinus cembra*) species & cultivars [T-9]  
Idaho State Garden Clubs (1986): European-derived Lilac (*Syringa vulgaris, S. josikaea*) species, cultivars, hybrids [R-9]  
William McGowan (1994): European Oaks (*Quercus frainetto, Q. robur, Q. robur x Q. alba*) species, cultivars, & hybrids [P-12]  
Everett & Lois Samuelson, Steven Samuelson, & Christine Samuelson Slusarenko (1998): Columnar English Oak (*Quercus robur*) cultivars & hybrids [P-11]  
\*Charles L. & Joanne Sutton (2000): Austrian Pine (*Pinus nigra*) species & cultivars [R-10]  
Farrell J. Tovey (1994): Scots Pine (*Pinus sylvestris*) species & cultivars [Q-10]  
Ethel & Leif Verner (1991): Norway Maple (*Acer platanoides*) species & cultivars [O-11]  
Joseph & Arlene Watts Family (1994): Norway Spruce (*Picea abies*) species & cultivars [S-8]  
Elisabeth A. Zinser (1996): European & American-derived Mock Orange (*Philadelphus*) species & cultivars [Q-11]

### Western North American section ("WNA" on map):

- College of Forestry, Wildlife & Range Science 75th Anniversary (1985): Idaho Native Conifers (*Abies grandis, A. lasiocarpa, Larix occidentalis, Picea engelmannii, Pinus contorta, P. monticola, P. ponderosa, Pseudotsuga menziesii*) [O-18]  
Dwight S. Hoffman (1995): Limber Pine (*Pinus flexilis*) species & cultivars [N-25]  
\*Idaho Native Plant Society, White Pine Chapter (1994): Idaho Native Shrubs & Small Trees [P-25]  
\*Richard & Marlene Johnston (1998): White Spruce (*Picea glauca*) species, varieties, & cultivars [P-26]  
Christopher J. Jordan (1998): Western North American Trees & Shrubs (*Populus, Amelanchier, Picea mariana*) [P-27]  
\*Eugene & Norma Slade (1993): California Incense Cedar (*Calocedrus decurrens*), Port-Orford Cedar (*Chamaecyparis lawsoniana*), Alaska Yellow Cedar (*Chamaecyparis nootkatensis*) & Western Red Cedar (*Thuja plicata*) species & cultivars [O-26]  
Eugene & JoAnn Thompson (1985): Idaho Commercial Timber Trees [O-15]  
Chi-Wu Wang (1994): Colorado Spruce (*Picea pungens*) species & cultivars [O-25]



**University of Idaho**

University of Idaho

PO Box 442282

Moscow, ID 83844-2282

NON-PROFIT ORG.  
U.S. POSTAGE  
PAID  
UNIVERSITY OF  
IDAHO

*Address Service Requested*

**Renew your annual contribution to the Arboretum Associates for Fiscal Year 2001 or contribute to your favorite project fund.** Please help the Arboretum grow by renewing your annual gift for the fiscal year which began July 1, 2000. *Thank You!*

Name \_\_\_\_\_

Address \_\_\_\_\_

City \_\_\_\_\_ State \_\_\_\_\_ Zip \_\_\_\_\_

Fund Contribution

Arboretum Associates \$ \_\_\_\_\_

Centennial Endowment Fund \$ \_\_\_\_\_

Pergola Fund \$ \_\_\_\_\_

Total Contribution \$ \_\_\_\_\_

**Membership Categories**

Individual Associate	\$15
Club & Organization Associate	\$25
Family Associate	\$30
Business Associate	\$50
Contributing Associate	\$75
Sustaining Associate	\$100
Life Associate	\$1,000

Please charge my \_\_\_\_\_ MasterCard \_\_\_\_\_ VISA

Card# \_\_\_\_\_

Expiration Date \_\_\_\_\_

Signature \_\_\_\_\_

Contributors receive our periodic ARBORNOTES. Please mail your tax deductible contributions to: Arboretum Associates, University of Idaho, P.O. Box 443147, Moscow, ID 83844-3147. Thank you.