



# VACATION WILL BEGIN SATURDAY AT NOON

## Varsity Players Score Big Success With "If"

Lord Dunsany's Latest Production Aably Handled by Play Production Class Under Direction Professor Cushman—Play is Salll Appearing for First Run in New York and Chicago.

### STAGE EFFECTS ARE CLEVER

Will Be Given in Spokane Spring Vacation Before Teachers' Association.

In presenting Lord Dunsany's "If" as an all university play Thursday evening, the Varsity players accomplished a genuine success. Departing as it did from the accepted standards of collegiate production, it required consummate skill to present this fantasy and to sweep the audience along with it through its ten rapidly changing scenes. Yet the crowd frotted at Mary Beal and all the things for which she stood in the second scene, and then forgot all about her in the excitement of playing ruler over a heathen people somewhere in Asia.

#### Rapid Change Made.

The contrast between a home of middle class England and the splendor of Al Shalomid's palace was so decided that the humdrum life of John Beal in England was forgotten in the intrigues and plots of his heathen court. Trying to govern his subjects in the way in which Englishmen have always been governed, his blue laws and safe and sane Fourths were, however, disliked by a people to whom despotic governments were a fetish.

Blind to the murmurings of his people and too easy going to become autocratic his last vestige of power is shorn from him when his queen betrays him while seemingly at the height of his glory and he barely escapes with his life. Then broken and weary he returns to his home, the spell breaks, the dream is over and he resumes his monotonous existence after seeing the past which might have been his.

#### Abe Goff Scores Success.

The work of Abe Goff as John Beal is especially commendable and Pearl Salkner as Miralda Clement, the girl who would be queen was fascinating. Marie Gauer as Mary Beal was an ideal wife for John Beal, the business man even though her hen-pecking made the audience sympathize with the poor fellow.

The orientals were exceptionally well done by Rex Kimmel, Maxwell Sholes, James Chapman and Al Marineau, and Fred Taylor as Archie Beal was a typical chappie Englishman. Grace Morgan's oriental dancing and Marineau's singing were both excellent. Mr. Marineau's song was written by Miss Bernadine Adair whose singing in the banquet scene with Mr. J. Stan McLaughlin, was one of the shining spots in the play.

#### Idaho Students Fortunate.

We are fortunate at Idaho in being able to produce and enjoy plays of such artistic excellence. The same impulses which have prompted playwrights and actors to attempt the bizarre and the unusual in dramatics have been at work at Idaho since Professor Cushman has had charge of the department without being highbrow in the doing.

It is hoped that more of this sort of play will become an integral part of our theatrical programs in the future and the Varsity players have really made a contribution to our appreciation of the beautiful in dramatics.

(Continued on page three.)

### SOCIAL CALENDAR

- March 30—Sophomore Frolic, gymnasium.
- March 31-April 9—Spring Vacation.
- April 13—Second appearance of varsity play, "If," auditorium.
- April 14—"I" club dance, gymnasium. Sigma Alpha Epsilon dance, Eggans' hall. Sigma Nu house dance.
- April 20—Triangular debate, Utah, Montana, Idaho.
- April 21—Junior Prom.
- April 28—Lindley Hall dance, gymnasium. Alpha Delta dance.

### HONOR SOCIETIES TAKE OVER LAST ASSEMBLY

#### ANNOUNCE LIST OF PLEDGES FOR THIS YEAR.

Representative of Each Group Explains Aims and Objects of Organization.

Members of eleven Idaho honor societies were guests at the regular Wednesday assembly, at which representative members of each group told of the aims and ideas of his organization.

Each of the groups at this time announced their new pledges. W. B. Mitchell of Parma, and Presley Horne of Caldwell, grand master and grand secretary respectively of the I. O. O. F., who are here attending the district convention of the order, were guests of the university over the day, and spoke briefly at the assembly.

#### Violin Solo Given.

Miss Helen Wood, a first-year student, gave a very pleasing violin solo. She was accompanied by Frank Mitten of Moscow, on the piano.

The honor societies represented in the assembly and their sponsors were the Alpha society, a local letters and science fraternity, petitioning Phi Beta Kappa, represented by Dean J. G. Eldridge; Alpha Zeta, national agricultural fraternity, represented by J. Fred Cline, Alpha Sigma Gamma, local commerce fraternity, petitioning Alpha Kappa Psi, represented by Walter Casebolt; Mortar Board, local women's honorary society, recently granted a charter in the national Mortar Board society, represented by Dorothy Cage; Sigma Tau, national engineering fraternity, represented by Lynn Hersey; Phi Upsilon Omicron, national home economics fraternity, represented by Helen Ramsey.

#### Phi Beta Gamma.

Phi Beta Gamma, local women's commerce fraternity, petitioning Gamma.

(Continued on page three.)

### REGENTS ADVISE DORM ERECTION BE DELAYED

#### QUARTERLY MEETING BOARD OF REGENTS HELD HERE.

Discuss Plans for New Science Hall And Suggest Speedy Erection.

Postponement of the erection of the news men's dormitory, which was to have been built this summer, until a later date, was advised by the board of regents, at their quarterly meeting held at the university Wednesday. The reason for this was that construction prices have risen considerably, and it would be impossible to build a structure equal to Forney hall, for which the same amount of money was available, at this time.

The new dormitory will be financed by the university building association, a private corporation of local business men, from whom the building will be bought by the university by twenty annual payments. The same association has erected Lindley and Forney halls.

#### Legislature Approves System.

The seventeenth Idaho legislature, just adjourned, passed a bill which has since received the governor's approval, sanctioning the erection of university buildings by private corporations, and their purchase by the university at a later date.

The new science hall, and the time of its erection, were also discussed by the board. There will be no money available from the tax until the first of August, and the university gets but fifty-five per cent of that. The entire amount is to be raised in two years.

It is hoped that the university will be given the entire first collection, and ten per cent of the second.

#### Hasten Erection of Hall.

If this could be done, it would allow the erection of the hall next

(Continued on page three.)

## Students Plan Variety Ways To Spend Time

Few Southern Idaho Students Will Go Home Because of Short Time Available—Many Expect to Gain Much Needed Rest, While Others Will Work During the Vacation Period.

### TEN PERCENT RULE WILL BE ENFORCED

Spring vacation will start Saturday noon, and will end Monday morning, April 9, at eight o'clock. The ten per cent rule, which deducts ten percent from the grade given in any class in which there is an unexcused absence either the class before, or after vacation, will be in effect.

In order to excuse an absence immediately before or after a vacation, it is necessary to have a leave of absence, signed by the dean of the college and the instructors concerned.

President Upham, who made an announcement concerning this in the last assembly, stated that the rule would be strictly enforced, and that leaves of absence would not be granted merely to save cuts.

### FRESHMEN GIRLS WEAR DISTINGUISHING MARK

Washington State College, (P.I.P. A.)—Freshman girls at Washington State college are wearing ribbons with "1926" inscribed on them in gold.

### Work Out Point System Activities

April 10, the first Tuesday after vacation, has been chosen as the day on which the fate of the Women's League point system will be decided. Presented several weeks ago, it has been worked over carefully by Vera Luce, committee chairman, and will be voted on at the Women's League meeting immediately following vacation.

Ranging from twenty to five points according to the importance of the actual work involved, the new system will award points for all campus activities. No girl will be allowed to carry more than forty points unless by special permission of the point system committee.

### TAKE HIKE TO PULLMAN

Women's Hiking Club Takes Nine Mile Trip Across State Line.

Members of the University of Idaho women's hiking club made a trip to Pullman last Sunday, taking advantage of the first balmy Sabbath of the season. The distance of nine miles was covered in good time, no casualties resulting, and all members finished strong.

The hikers club originally consisted of twenty-eight members this year, but during the winter the number dwindled down until of late but from seven to ten have turned out for the hikes.

#### Interest Should Increase.

It is expected, however, that with the arrival of real spring weather the interest will increase among the Idaho women. Trips will be possible, now that roads have dried up and rain is no longer ever threatening, that could not have possibly been attempted during the winter months, and in fact, up until the past week. The Moscow mountains will be thoroughly explored, it is rumored, as well as other nearby picnic places.

### MANY TO STAY ON CAMPUS

Classes to Take Up at Eight O'Clock on Monday Morning.

Spring vacation will begin Saturday noon, and already students are planning what they will do during that week when there are no eight o'clocks to get up for.

Perhaps the most universal expression to be heard as to the ways in which the vacation will be spent is the terse statement "Sleep." From the number of students who have made this statement, it appears that the entire student body is going to try to out rival King Tut in snoozing away the hours.

#### Few to South Idaho.

Few southern Idaho students will go home for vacation, as the time at home would be so short as to make the cost almost prohibitive. Practically all students from the northern part of the state will leave for home, however, and many of the southern students will accompany them for short visits.

Many plan to replenish flat pocket-books during the week, by some form of work, in order to add to the money available for the last nine weeks of school.

#### Make Up Work.

Other are planning to catch up with school work which they have allowed to drag during the early weeks of the semester, and still others plan to work ahead with laboratory assignments, so that more time will be available when spring fever gains a strong foothold.

And then there are many who will rest. No one can be blamed for making a decision to follow the latter course, for with the word "vacation" rest is naturally associated. And rest will be needed, for the closing weeks of school will be gruelling, with no opportunities for holidays.

#### Association Will Meet.

The meeting of the Inland Empire Teachers' association, which is to be held in Spokane April 4, 5, and 6, will draw many faculty members. Several of the Idaho faculty will give addresses on various phases of educational work and study.

The Varsity players will give "If" in Spokane, at the Lewis and Clark high school auditorium, during the time that the teachers are in Spokane.

These are but a few of the numerous ways in which students and faculty will utilize their vacation period. But all will be back on Monday morning, April 9, when classes will again be held, for regardless of how the time was spent during vacation, the ten per cent cut rule stares everyone in the face if beginning classes are missed.

### RECEIVES HONORARY DEGREE FROM EASTERN COLLEGE

Vilhjalms Stefansson, the well known arctic explorer, was among those awarded degrees by Harvard university. The award was made on the basis of advanced study which he did during 1902-06. He did not apply for a degree at that time, but was granted a degree on recent application.

## First Real Spring Days Stir Proof Reader's Soul

Spring, beautiful spring is here with us again—maybe.

After several unsuccessful attempts during the last six weeks to fool the ground hog, Mother Nature has finally delivered what promises to be the real article. Although rumor has it that we are still due for another snow storm and several rains, the average college student is inclined to cast the "wet blanket" aside and broadcast to the world that "Spring is here!"

Arboretum dates, serenades, indoor baseball games played outside, and small attendance at classes are all proofs of the old saying that when business interferes with pleasure—well, it's too bad about the business.

A close observer during the last week would have noticed cigars and fraternity houses and candy and

flowers at sorority houses. Reader, draw your own conclusions, but if that is not a positive criterion of spring or at least spring fever, I'll check in my cards to King Tut.

May the weather keep up, for we all like to smoke El Ropesos, or eat Helen Ardelles, and there are lots of firms that make a living by selling fraternity pins, especially the jeweled ones.

Already bets are being placed on which fraternity will lose the most pins, and which sorority will gain the most. It's a close race so far. But two months are ahead of us yet. Who knows?

But remember those touching lines which run, "Even though I walk down the church aisle to show off my wife's new spring hat, I must dig down in my jeans and pay for it." Next!

# The University Argonaut

Member of the Pacific Intercollegiate Press Association.

Published by the Associated Students of the University of Idaho Tuesday and Friday evenings.

Rates: Per year, \$2.00, except subscriptions outside of the United States, which are \$2.50. Subscription included in the Alumni Dues of \$2.00 per year.

Entered at the postoffice at Moscow, Idaho, as second class matter.

JOEL L. PRIEST, JR. .... EDITOR  
Eugene C. Zachman, Associate Winton C. Arnold, Manager

### EDITORIAL STAFF

Robert L. Holbrook ..... Makeup Editor  
Ed Funk ..... Sporting Editor  
John A. Zuver ..... Asst. Sporting Editor  
Dorothy Cline ..... Women's Athletic Editor  
Elizabeth Mount ..... Women's Editor  
Amy Barstad ..... Society Editor  
Donald DuSault ..... Alumni Editor  
Paul Harlan ..... Dramatic Editor  
Ruth Hawkins ..... P. I. P. A. Editor  
Merle Drake, Walter McCrea ..... Proof Readers  
Walter York, Donald Sutherland ..... Proof Readers

### SPECIAL CONTRIBUTORS

Vernon Walters, Arthur S. Guerin, Jr., Francis Armstrong.

### STAFF REPORTERS

Harold Wyman, John Zuver, Louis Helpfrey, Dorothy Cline, Martel Archibald, Delmont Smith, Francis Wyman, Don Cunningham, Robert E. Heltzman, E. A. Tylor, Rush Jordan, Marguerite F. Barlogi, Helen Johnson, Don McCrea, Floyd Marchesi, Sprague Stevens.

### HONOR SOCIETIES.

The assembly last Wednesday presented a problem which, although it is far from serious now, may become so in the future, as it has in many other schools, a serious one, worthy of more than passing consideration.

Is Idaho in danger of becoming overcrowded with honor societies? Are we nearing the time when an honor society which would take as members only those who belonged to no other honor group would have extreme difficulty in finding members?

At present honor societies at Idaho are few, and all are worthy, having as their aim the honoring of high scholastic work. But every year finds more of them on the campus, and there is danger that in the future they will be formed for no other purpose than to satisfy the whims or please the vanity of the members.

### WE'RE ALL ALIKE

Humans are funny things. We are here, on our own, our parents', or our banker's money, to wring from the university an education that will fit us for our life work. We are, supposedly, trying to gain something every minute of the time we spend here.

But we're all alike. We're all pleased, every one of us, when the prof fails to appear for a class, and we have an hour off, or when a vacation, anywhere from half a day to two weeks, comes along. And yet that hour, or that week, shortens considerably the time we have in school.

Humans are funny things, aren't they?

### THE TRUTH.

It is the truth that hurts. Why is it that when a newspaper publishes something that is the truth, something that is admitted by everyone, the newspaper is censured?

Is it necessary that The Argonaut, merely because something does not look the brightest and the most promising, should color the news with roseate hues, and make things appear as they are not?

What do you think about it?

### SPRING VACATION.

Spring vacation is not, in the true sense of the word a vacation. It is a time when students are offered the opportunity to catch up with their second semester's work that is already behind, and fortify themselves by additional study against the approaching summer weather.

## Easter Vacation

Long sunshiny days and moonlight evenings. Pass the time pleasantly at Mitten's. Bring your friends and come in.

ICE CREAM, SHERBERT AND OTHER CONFECTIONS.

## MITTEN'S

MEN'S REGAL OXFORDS  
New Spring Styles, Black or Brown.

\$6.80.

## CREIGHTON'S

## ALUMNI

Donald DuSault, Editor.

From an Alumnus in China.

Joshua Chas. Jensen, '07. Dr. Jensen is at present located at Yachow, Szechuen, China, as pastor and head of the civic young men's guild. He received his M. A. degree at Colgate in 1911 and his B. D. degree at Yale in 1918. He is married and has two children. His work in China has led him into many a thrilling experience as he has traveled through a large part of China and Indo China, on foot, sedan, junk, steamboat and railways.

During these trips he has been held up a number of times by bandits, but has always been fortunate to escape injury. He tells of building a tennis court on the side of Szechuen mountain which is used by both Chinese and white people, and he also tells of visits to many of China's sacred places. Following is a recent letter from him telling of the famine in China.

### Interesting Letter.

"I suppose I am about your most distant graduate or, I suppose I should say, alumnus. You can judge how distant I am when I tell you that the August number of The Argonaut reached me only about two weeks ago. One time I was called upon to make an address in a church in Scranton, Pa., in the place of a man from Japan, the minister, in introducing me, said that he supposed I came from a place about as far away as the place the original speaker came from. I could not resist the temptation to say 'Yes, I come from as far away as he, since I have to go through his place of work to get to mine and, while it takes two weeks to go from Seattle to his place, it takes two months to finish my journey from there on.'

### Famine During Summer.

We have been having a famine in this district the past summer. The famine was due to raising of opium, banditry, and too much rain last year, principally the latter. We were able to get a satisfactory grant from the China International Famine Relief Committee and I was put in charge of the work of distribution. We distributed about twenty thousand dollars and I think I am safe in saying that we saved many thousand lives.

The Chinese gentry and officials were very apathetic and indifferent. The lists of famine victims they got out for me were usually from seventy to ninety odd per cent padding; and many of the local sub-officials neglected to take the food stuffs home for distribution after we had issued it to them. In another place the coolies insisted that they must have twenty per cent more than the usual price for carrying relief supplies and they actually held out in their demands till we had to yield. (It is a very ordinary thing for the men who usually carry water for the city's regular use to 'down' buckets and

demand three times the usual price for carrying when a fire starts in a building.

### Fail to Repair Roads.

In one part of our district where the famine was especially severe there is a very important road which now is a mere trail. I got the local official, sub-official, and head man together late in April and asked them to get busy fixing that road and I would furnish, out of the famine fund, the food for the workers. But they dallied and dallied and in spite of repeated urging from me they did not get started till a month after the famine was over late in August and I am afraid several hundreds starved to death in the meantime.

We have only about forty church members in this city but they did more and much better work I think than the forty thousand non-church members. Do you wonder that I think it worth while to live here and try to instill into the people the spirit of Him who came that men might have life and might have it abundantly?

### Religion Different.

Christianity is not the only religion that teaches altruism but it is, so far as I know, the only religion that generates works of altruism. The Orient believes and practices the Hedonistic philosophy while Christian America believes it but is far from uniform in her practice of it.

Well, I haven't seen the copy of The Argonaut telling about the Pullman game yet. But I expect to read it about the time of the W.S.C.-Idaho baseball game. Till then, best wishes.—Joshua C. Jensen.

Earl A. Beck, graduate of the school of practical agriculture in '13, is now located at Bassano, Alberta, where he is associated with the agricultural branch of the department of natural resources of the Canadian Pacific Railroad. He is representative for the irrigation investigations branch and works over a large territory around Bassano. His first four years after graduating were spent in field work with the United States department of agriculture and the last six years he has been with the Canadian Pacific railway.

### WORK STARTED ON NEW CALIFORNIA STADIUM

University of California, (P.I.P.A.)—Excavation on the site of the new stadium began today. The sluicing cannot be rushed for lack of water, but the steam shovel can work at full speed.



### A Financial

'Stronghold'

As this Bank was established in the year 1882, it has come to be a financial stronghold. Its resources ample for the protection of all deposits and its Management is composed of well-known men who watch its every interest.

COMMERCIAL AND INTEREST ACCOUNTS

THE FIRST NATIONAL BANK

of Moscow

SAFE DEPOSIT BOXES



THE WORLD'S best music is sung or played for you by the world's greatest artists if you have a

**Victrola**

in your home. Come in and hear your favorites.

**Sherfey's Book Store**

The home of the Victrola and Eastman Kodaks

**CITY TRANSFER & STORAGE CO.**  
CARL SMITH, Prop.  
Office phone 11, Res. phone 11H

**"The Flu"**  
A flea and a fly flew up in a flue. Says the flea to the fly, "O, what shall we do?" "Let us flee," said the fly. "Let us fly," said the flea; So they fluttered and flew up a flue in the flue.  
SOME FLU  
Aside from that, in order to enjoy a real spring vacation we should all eat good wholesome food. This will foil the Flu. We have a store full of such food. Call us.  
PHONE 136  
**BRATTON'S**  
Where Quality and Service Are Higher Than Price

## Ye Canterbury Crier

VOL. 2, NO. 5

MARCH 30, 1923

### FAMISHED FRAIL DOST FOIL FOUL PAIN.

Ye ed. of Ye Canterbury Crier hast been out of Ye race fore some several and sundry days, but hast felt that a return wouldst be to the best advantage ande so dost hereby ande hereon return.

He hast had called to his attention during Ye past few weeks that one of Ye trails of Ye campus hast been following around one fair man in Ye person of Abe Goff ande she didst show such resolve that even Abe felt that he wouldst fall or faint.

In desperation he dist lye himself one day to Bob's Sweet Shop where he didst think that he wouldst be safe from the wiles of the above mentioned frail. In she didst come ande didst thereupon sit herself down and draw upon Abe fore one sundie ande Abe didst so enjoy watching her 'evour it that he didst fail ande now he goes round as if he hadst fainted instead. Ye ed. hopes that his explanation hast been the best in Ye whole world.

## KODAK FILMS DEVELOPED!

FREE OF CHARGE

Why pay 15c when we do it FREE  
HIGHEST QUALITY GUARANTEED

Take plenty of films on your trip. We will take back the ones not used.

## ECONOMICAL PHARMACY

### A RECIPE FOR CONTENTMENT

Only by spending a little less than is earned, by buying wisely and living sanely can anyone expect to get the most out of life. We can help you put your finances on a systematic basis. Open a thrift account with us for one dollar or more and begin now to pave the way for comfortable years ahead.

## FIRST TRUST & SAVINGS BANK

"HOME OF TRIFT"  
Resources \$1,300,00.00

### CHOICE EASTER CANDIES

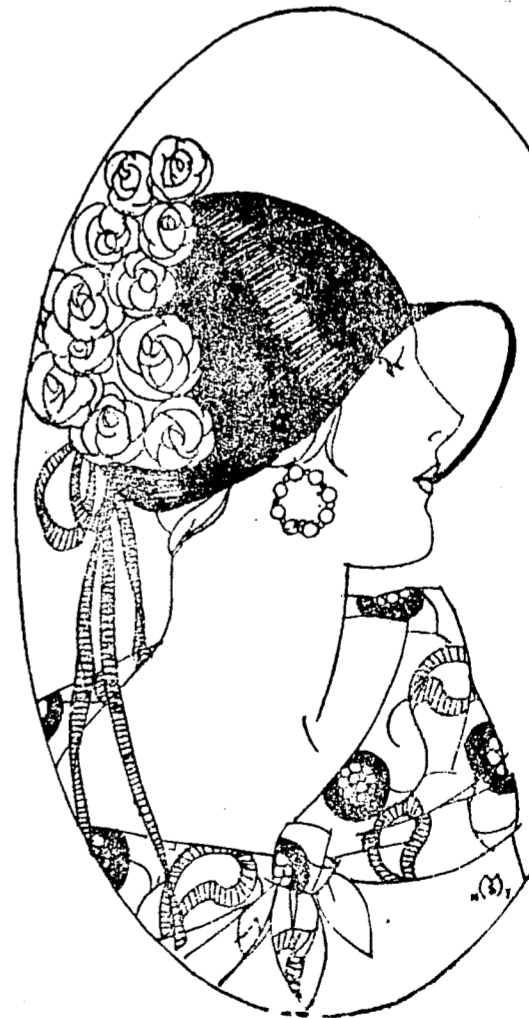
Easter Candy should always be selected with regard to quality. Our stock of

Whitman's Candies

has been enlarged for Easter. Many of the special Easter Gift boxes are works of art. Get a box for Wife, Sweetheart or Mother. We have some novel Easter packages for the Kiddies.

**Corner Drug & Jewelry Store**

## YOUR EASTER BONNET



There's not a doubt about it—A great number from which to choose—And no two alike. Better hats—Better Styles for less money. Our display of Easter-time millinery carries a distinctive note of individuality and charm. We are also giving a reasonable discount on all hats for this week only.

## FISHER MILLINERY

"WE DO HEMSTITCHING"

For Ladies and Gentlemen Who Care--

Let MISS SHANNON improve your appearance. Marcelling, Manicuring, Massage, Hair Dressing de Luxe 211 Second St. Phone 182-Y

**SOCIETY**

Amy Barstad, Editor.

The members of Kappa Delta, the new fraternity which was recently organized on the campus, were entertained by Kappa Sigma at a dinner and smoker Wednesday evening.

Bernard Talbot, Herbert Glindeman, Guy Penwell, Edwin Babcock, and Malcom Neely were dinner guests of Delta Gamma during the week.

Clyde Richards and Delmont Smith were dinner guests of Phi Alpha Psi.

P. H. Horne, grand master of the state organization of I. O. O. F., and L. F. Mitchell, grand secretary of the same organization, were dinner guests of Phi Alpha Psi during the week.

Mary Louise Sparks, Helen Hibbs, Vera Wright, Marion Sickels, Ellen Ryerson, and Mr. and Mrs. Hagan were Sunday dinner guests of Phi Alpha Psi.

Mrs. L. A. Gleason, and the Misses R. Irving, J. McCauley, V. Lase, were Sunday dinner guests of Beta Theta Pi.

Gamma Phi Beta entertained the patronesses and the Moscow mothers at a fireside Sunday evening.

Mrs. Frances Crosson is a guest of Gamma Phi Beta this week.

Gamma Phi Beta announces the marriage of Emily Dean Wade to Sherman Breshers, of Phi Delta Theta, at Rigby, Idaho, on March 2.

**ANNOUNCEMENTS**

**FINAL TRACK CALL**

All men who expect to compete for places on the varsity or freshmen track squads must report for practice not later than Friday afternoon. This is the last and final call for track team candidates.

R. L. Mathews,  
Director of Athletics.

There will be special Easter services at the Epworth League of the First Methodist Episcopal church on Sunday, April 1. All students are cordially invited to be present.

**PLAN CAMPAIGN TO STOP JAY-WALKING**

Mayor Hawkin Melgard has enlisted the aid of the Boy Scouts of Moscow in reducing the danger to pedestrians at street intersections in the business district. Tomorrow afternoon, Troop 1, with the aid of the street department, will paint "safety crossing zones" on intersections on Main and Washington streets. All day Saturday Scouts will be stationed at Third and Washington to teach the public to use the guide lines in crossing the streets.

The city council feels that Moscow has long needed to conduct a campaign against jay-walking and now that the machine has arrived for painting the marking strips, will ask that the public observe these needed precautions in crossing streets.

**The Inland Market**  
CARL E. ANDERSON, Prop.

Fresh and Cured Meats, All Kinds of Sausage, Spiced Meats, Fish and Game in Season.  
Phone 124.

**VENUS PENCILS**  
The largest selling quality pencil in the world.  
FOR the student or prof., the superb VENUS out-rivals all for perfect pencil work. 17 black degrees—3 copying.  
American Lead Pencil Co.  
239 Fifth Ave. New York.  
Write for booklet on VENUS Pencils and VENUS ERASERS and Mechanical Pencils.

**VARSITY PLAYERS REGISTER BIG HIT**

(Continued from Page One.)

The cast follows:  
John Beal ..... Abe Goff  
Mary Beal ..... Marie Gauer  
Liza ..... Mary Kelly  
All ..... Rex Kimmel  
Archie Beal ..... Fred Taylor  
Daoud ..... Maxwell Sholes  
Huzzeln ..... Rex Kimmel  
Hafiz el Alcolb'ian... Jimmie Chapman  
Thoothoo Baba ..... Mary McCallum  
Bazzolol ..... Pauline Pence  
Omar ..... Al Marineau  
Miralda Clement ..... Pearl Stalker  
Bert ..... Maxwell Sholes  
Bill ..... Jimmie Chapman  
Man in the corner... Al Marineau  
Sheik of Bishareens... Rex Kimmel  
Dancer ..... Grace Morgan  
Singers, Bernadine Adair and J. Stanton McLaughlin.  
Guests, Gladys Tuell and Kenneth Anderson.

Members of the producing staff are: Rose Donovan, business manager; Pete Drus, scenery; Virginia McRae, costumes; Doy McKinley, Clayton Hoover, Ralph Hasbrouck, stage technicians; Walter Garrett, electrician.—P.M.H.

**HOME ECONOMICS GROUP INITIATES TWO PLEDGES**

Gladys Perry and Mildred Waters were initiated into Phi Upsilon Omicron, national home economics fraternity, at a service held Monday night, March 26, at Miss Katherine Jensen's apartment. After the initiation a banquet was given at Mitten's. To be eligible to membership in the fraternity it is required that a girl be in the upper two-fifths of her class in scholarship and that she has completed the first semester of her sophomore year. Idaho has one of the two western chapters of this society.

**BOARD OF REGENTS HAS MEETING HERE**

(Continued from Page One.)

winter, and it would be ready for occupancy a year from September. If this arrangements to make all the first year's taxes available for the science hall cannot be made, it will mean that another year will pass before construction can begin. The action of the board in recommending that the new dormitory not be built for some time will add to the crowded conditions of the university next year, as it was the plan of the administration to utilize the lower floor, which would eventually be a dining room, as class rooms until the science hall was erected.

Other business transacted by the board of regents had no direct bearing on the university, but pertained to other institutions of higher learning in the state, over which the board has supervision.

The executive committee of the university, and members of the university administration met in conjunction with the board of regents.

Those attending the meeting here were Mrs. J. G. H. Graveley of Boise, president of the board of regents; Stanley A. Easton of Kellogg, secretary of the board of regents and chairman of the executive committee; J. A. Lippincott of Idaho City; Huntington Taylor of Coeur d'Alene; Elizabeth Russum of Boise, state superintendent of public instruction; E. A. Bryan of Boise, state commissioner of education; and Dr. A. H. Upham, president of the university. Irwin E. Rockwell of Bellevue, vice president of the board of regents, was not present at the meeting.

**FACULTY MEMBERS TO LECTURE AT SPOKANE**

**IDAHO FACULTY WELL REPRESENTED AT MEETING.**

Inland Empire teachers' Association to Meet in Spokane During Spring Vacation.

Faculty members of the University of Idaho have been given a large place on the program of the Inland Empire Teachers' Association which meets in the Lewis and Clark high school in Spokane April 4, 5, and 6. The association includes among its members the leading educators of the four northwestern states, Washington, Idaho, Oregon, and Montana. Prof. James M. O'Gorman will discuss the subject: "The Education of the Public by Psychology Fakery," before the division of education and psychology, Wednesday afternoon.

**Dr. Axtell to Speak.**

Dr. H. L. Axtell will address the classical section Wednesday at 2:00 o'clock. His subject has not been announced.

Prof. J. H. Cushman will speak on "High School Dramatics" to the section on public speaking and high school dramatics.

Dr. George M. Miller will deliver the report of the committee on English in colleges and universities to the Inland Empire council of teachers of English.

Prof. H. C. Dale will deliver an address to the commercial section. His subject is "Commercial Education in Secondary Schools."

Mrs. M. L. Sargent will address the modern language group on the topic, "Some Problems in Language Teaching."

Miss Permeal French will discuss "The Business of Education" before the women's executive league.

A large group of the Idaho faculty will be in attendance at the meeting, as spring vacation will be in effect at that time. E. A. Bryan, of Boise, state commissioner of education, is president of the association.

**PLEDGES ANOUNCED BY HONORARIES**

(Continued from Page One.)

ma Epsilon Pi, represented by Marie Hummel; Pi Epsilon, local educational sorority, petitioning Pi Lambda Theta, represented by Margaret Mimms; Sigma Xi, national scientific fraternity, represented by Dea N.M. Angell.

Silver Lance, honorary senior fraternity, represented by William Briscoe; Xi Sigma Pi, national honorary forestry organization, represented by Herbert Baumann.

The new new list of honorary society pledges are as follows:

Alpha Society local letters and science group petitioning Phi Beta Kappa—Pearl Stalker, Irene Starrh, Bethel Collins, Boise; Philip Buck,

**COLLINS & ORLAND HARDWARE CO.**

There is  
**NO BETTER**  
Desert for your Easter Dinner than  
**FRENCH PASTRY**  
**Empire Bakery**  
Third Street.

Monrovia, Cal.; Lyla Harsh, Moscow; Alice Sheffield, Rathdrum.

**Alpha Zeta Honors Three.**

Alpha Zeta, national agricultural fraternity—Paul Harlan, Jackson, Tenn.; Francis Peterson, Nampa; John Vesser, Coeur d'Alene.

Alpha Sigma Gamma, local commerce fraternity, petitioning Alpha Kappa Psi, national commerce society—William Briscoe of Santa Barbara, Cal.; Clare B. Lowe, Council.

Mortar Board, local women's senior society, recently granted a chapter of the national Mortar Board society—Jean Frazier, Pocatello; Jewel Coon, Boise; Cleary Gossett, Moscow; Elizabeth Bartlett, Josephine Schreiber, Grace Morgan, Vaughn Prater, Pearl Stalker, Ruby Gates, Boise; Margaret Collins, Myra Armbruster, Moscow; Bernadine Moser, Kendrick; Ruth Hawkins, Emmett.

**Two Sigma Tau Pledges.**

Sigma Tau, national honorary engineering fraternity—Walter Wisdom, Rathdrum; Jack Woodworth, Moscow.

Phi Upsilon Omicron, national home economics sorority—Gladys Perry, Moscow; Mildred Waters, Moscow.

Pi Epsilon Sigma, local educational fraternity, petitioning Pi Lambda Theta—Rita Kendrick, Mullan; Cleary Gossett, Moscow; Catherine Hahn, Lewiston.

Silver Lance, honorary senior men's organization, not seeking affiliation with any national fraternity, whose membership consists of Lynn Hersey, Lenore; William Briscoe, Santa Barbara, Cal.; Robert L. Holbrook, Sweet; Robert M. Cummins, Kellogg; Greek Wells, Moscow; Rex Kimmel, Lockhart, Fla.; Philip Buck, Monrovia, Cal.

**Xi Sigma Pi.**

Xi Sigma Pi, national forestry fraternity—Arthur M. Sowder, Coeur d'Alene; Ralph Space, Weippe.

Sigma Xi, national graduate scientific fraternity, announced no pledges, nor has it any associate members from the university student body, but is made up entirely of graduate students and professors who have made a noteworthy contribution to science.

Quick Sales Small Profit  
**QUALITY ALWAYS**  
**A. I. ROLLEFSON**  
GROCER  
Two Phones 351  
Moscow Idaho

**STERNER'S STUDIO**  
For photos and picture framing we have up to date mountings and mouldings. Come in and make an appointment with us.

**J.C. Penney Co.**  
A NATION-WIDE INSTITUTION - Incorporated  
371 DEPARTMENT STORES  
Moscow, Idaho

**Stylish Spring Suits for Women and Misses**

Display of modish and becoming styles, revealing the newest and smartest trends of fashion—and as attractive in quality values as in modes. Made of excellent quality—

**Poirot Twill Tricotine**

In fashionable blouse models and chic box-coat and side effects; modishly trimmed with braid, stitching and embroidery; handsomely lined with Silk Crepe and Silk Peau de Cygne. Women's and Misses' sizes.

24.75 34.75  
39.75



**HOTEL MOSCOW**

EXCELLENT GRILL  
Pool Room in Connection  
T. M. WRIGHT, Prop.

**THIRD STREET MARKET**  
J. G. GIBSON

Fresh and Cured Meats Phone 248

Full line of shoes for men and boys. Men's and Ladies' rubbers. Trunks and Suitcases. Well established shoe repairing department.

**J. N. FRIEDMAN**  
South Main St.

**PLUMBING FIXTURES**

Plumbing, Heating apparatus, Furnaces, Furnace Extras and Repairing  
TELL US YOUR TROUBLES  
**WITTER PLUMBING CO.**

**The Art of Design**

Was never better illustrated than in the beautiful and intricate embroidery as shown on Redfern Garments for spring. Many tedious hours were spent in cunningly working out the detail of the embroidery to harmonize with the contour of the garment. Embroidered garments are very stylish



**THE PARISIAN**

**The KENWORTHY**

Friday—Lionel Barrymore and Sena Owen in "The Face in the Fog."

SATURDAY  
Gloria Swanson in "UNDER THE LASH"

SUN. — MON. — TUES.  
SAROLD LLOYD in  
DR. JACK

## RELAY CARNIVAL TO BE LATTER PART OF APRIL

IDAHO SCHEDULED TO ENTER FOUR MAN TEAM.

Training Slowed up Considerably Because of Poor Weather and Training Quarters.

Idaho's four-man relay team, which will represent the silver and gold at the Seattle relay carnival, which is scheduled for April 28, will be sadly handicapped by the adverse weather conditions which have prevailed during the spring training season. Training conditions in Lewis court were by no means the best, both because of the cramped running space, and because of the chill air, which gave the runners little chance to limber up.

Outdoor turnouts have been impossible until the past week, and until that time few of the cinder track aspirants really did any serious work. As yet the members of the relay team have not been named. It is expected that they will be chosen on the strength of the showing made during track turnouts in the two weeks following spring vacation.

**Vacation May Interfere.**  
The week's leave from classes, afforded by spring vacation, may also have the effect of slowing down training progress somewhat. It is expected, however, that most of the athletes will remain on the campus and continue training during the week.

The intra-mural outdoor track meet will probably be scheduled for the second Saturday after vacation. An effort will be made to get all available material out for this meet in hopes that a few more candidates of varsity calibre will be discovered. Showings in this meet will have considerable weight in the picking of the freshmen representatives for the coming season, also.

## KAPPA SIGS STILL LEAD INDOOR BASEBALL SERIES

The Kappa Sigs still lead in the intra-mural indoor baseball league with a perfect average. Trailing one game behind is the strong Lindley hall aggregation, who will go into a tie with league leaders should a possible win be secured over them in any of the remaining contests. Neither of the outfits have exceptionally hard teams to play in the remaining games and the championship looks like a cinch for the present leaders.

**Other Sports Start.**  
The week following spring vacation will finish all straggling and postponed indoor games. After this, baseball, tennis and outdoor track will be staged. Exceptionally keen competition is expected in these events, owing to the close race that several of the houses are running for high place for the all around intra-mural cup. This cup will be awarded to the group on the campus having the best all around average.

**Indoor League Standing.**

Kappa Sigma	1.000
Lindley hall	.844
Sigma Nu	.665
Beta Theta Pi	.500
Sigma Alpha Epsilon	.423
Elwetaz	.423
Phi Delta Theta	.400
Phi Alpha Psi	.000
Phi Gamma Delta	.000

### Y. W. C. A. CO-EDS TO EDIT LAST ISSUE OF SAGEBRUSH

University of Nevada, (P.I.P.A.)—The last March issue of the Sagebrush, student newspaper, will be edited and published by the women of the Y.W.C.A. An extra fine edition of the "Brush" is promised by the co-eds but it is rumored that the regular staff members will lurk in the office in case the heads won't work out.

## Easter Vacation

The time to have your photograph made by

**MIKLOS**

Phone 105-Y  
Opposite Postoffice

## OREGON STUDENT TO MAKE BICYCLE TOUR OF EUROPE

When it is stated that a college student does not look forward to his work with any great degree of seriousness, such actions as those of the student of Oregon who intends touring Europe on a bicycle are not taken into account. Edgar Bahlman, who intends doing stage decorating, is going to pedal his way through Italy, Spain, France, and Germany to get a background for his future work.

## MEETING OF ENGINEERS

First Meeting of Second Semester Devoted to Discussions By Upperclass Students.

The first engineers' meeting of this semester was held Wednesday evening. Talks by junior and senior engineers were the features of the meeting. Merritt Penwell, mechanical engineer, spoke on the U. S. geological survey, Kriss Cowther told of the municipal works in the small town from the inspector's view point, and Greek Wells told of the characteristics of employment.

Penwell, who has worked on geological surveys, told of the survey in the Seven Devils country, one of the richest mining countries in the west. He described the wealth that could be obtained if a railroad would be built into this country. At present there is some talk of a railroad being constructed.

**Municipal Works Construction.**  
The talk given by Cowther gave an idea of the establishing of municipal works in the small town. Cowther told of the plans and construction of a sewer system in the small town. Although on a small scale, the general construction is the same as that used in a city.

Wells gave in detail the analysis of character in every day business. He has made a study of this subject for several years. During his talk he brought out the points of character that a person notices, often unconsciously, in every day acquaintances.

## THREE OUT OF FOUR STUDENTS ATTEND OWN UNIVERSITIES

Three out of every four students attend college in their home state, according to Dr. George F. Zook, of the United States bureau of education, who has made a study of the residence of college and university students. The proportion of students to population, is greatest in states west of the Mississippi river, and lowest in the southern states.

An estimate of students from foreign countries has been made for the first time. In 1920-21 there were 6901 foreign students and 1456 students from American possessions, making a total of 8357.

## NATIONAL KAPPA SIGMA PRESIDENT VISITS HERE

J. Sterry Lamson, national president of Kappa Sigma fraternity, and Fred J. Wetrick, president of the northwestern district, arrived here Thursday evening from Spokane to visit the local chapter.

The two men are visiting all the chapters of Kappa Sigma on the Pacific coast. From here they will go to Pullman to visit the W. S. C. chapter. Mr. Lamson is a San Francisco attorney and Mr. Wetrick practices law in Seattle.



**"THE BONNIE"**  
TONGUE STRAP PUMPS  
\$6.55

The pretty grey kid inlay on the tongue of this dressy patent pump adds a delightful touch. The Louis heel and modish vamp put this style amongst the leaders in spring fashions.

The low price places this pump within the reach of all. Same in grey suede, \$7.85.  
**ARMOUR PLATE HOSIERY**  
There's miles of wear in every pair.  
Largest chain retail shoe stores in Northwest.

**BUSTER BROWN SHOE STORE**

## PRESCOTT RE-ELECTED MANAGER OF TENNIS

GAHAN TO TAKE POSITION NEXT SEASON.

Prospects Look Bright With Many Old Men Back—Matches Being Arranged.

Local tennis enthusiasts met here Wednesday in preparation for the coming net season, and reelected Daniel C. Prescott of Spokane tennis manager for the year, and George Gahan of Boise assistant manager. Gahan will succeed Mr. Prescott as manager in September. Prescott was manager of last year's team, and last fall won the men's singles tournament held here. Gahan was a strong contender for tournament honors, and should prove a dangerous man with the racket in this spring's meets.

**Three Men to Team.**  
Varsity teams will again, as in the past, be composed of three men, to be chosen in an elimination ranking tournament, to follow spring vacation, April 9. Plans for inter-fraternity contests were also discussed, and the rules for challenge among entrants in the all-college tournament revised.

Matches with the leading northwestern university tennis teams are now being arranged and will probably consist of three or more contests. Daniel Prescott, Curtis Herrington, of Boise, Kenneth M. Hunter of Coeur d'Alene, and Charles Preuss of Tacoma, Wash., are members of last year's varsity squad who will again enter the court contests this year.

## PROF. BROSNAN ASKED TO ADDRESS HISTORY GROUP

Professor Cornelius J. Brosnan, of the department of American history has been invited to speak at the sixteenth annual meeting of the Mississippi Valley Historical association, which meets this spring at Oklahoma City, on "The Winning of Kansas, 1854-1858."

The program, which covers three days' sessions, is entirely historical. This is the first time that the department of American history of the university has been represented at one of these meetings. The association is one of the nation's greatest historical organizations. The University of Idaho is the only school west of the Rockies represented on the program.

## Easter Hams

There is nothing more appetizing than an Idaho Pride Ham for your Easter dinner. We have them smoked in that old-fashioned way that appeals to particular people. Boiled, fried, baked or cooked in any of the many ways. They have a flavor you will not soon forget. We also have a choice lot of roasting hens for our Saturday trade.

## COLD STORAGE MARKET

**"Little Mary KELLY"**

Has come to town

SEE HER at

**THE FASHION SHOP**

## NEW BADIATION AT NEVADA BL SINGERS

University of Nevada, (P.I.P.A.)—A new tradition on the Sagebrush campus was inaugurated last Friday when the department of music sprang a "Melody Day" on the university. The glee club spent the day in giving serenades here and there about the campus and loud tones from a magnavox filled the air where the songsters failed to penetrate. A matinee dance, held on the paved street in front of the musical headquarters, finished the day's entertainment.

## DR. LANEY GIVES TALK

Gives Results of Scientific Study at Monthly Meeting of Sigma XI

Dr. Francis B. Laney, professor of geology at the University of Idaho, read a very interesting and highly scientific paper at the regular monthly meeting of Sigma XI, national honorary scientific fraternity open to graduate students and professors engaged in scientific research work.

Dr. Laney chose for his subject the "Relationship Between Minerals in Metallic Ores." He presented to a large and attentive group an interesting explanation of highly technical chemical and physical research, which he has been carrying on for a long period of years. The lecture was replete with diagrams and lantern slides illustrating the points made and the experiments executed.

**New Phase of Research.**  
The work of the Idaho geologist has consisted of a new phase of research, comprising microscopic mineralogy and microchemistry. By the aid of certain characteristics determined only by actual and tedious microscopic examination, Dr. Laney has been able to determine the mineral in galena (the lead sulphide) that carries the silver values throughout the western states.

He finds that during the crystallization of the various minerals that some minerals pass entirely through the solid crystals of others and take up their own crystal form inside. Dr. Laney ranks very high among the men in this country that can make these determinations and has increased scientific knowledge greatly by his findings.

# Helen Ardelle

BOX CAND YFOR

## Easter

◆◆◆◆◆

WE HAVE A LARGE DISPLAY OF BOX CANDY FOR YOUR CHOOSING

◆◆◆◆◆

Fruit and nuts, assorted chocolates, French creams, and chocolate nuts and many others.

Give a box of delicious Helen Ardell Chocolates this Easter.

# The Bon Ton

## Dutton's Candies

The most complete line of bars in town.



We will appreciate your patronage during

## Spring Vacation

40c Lunches and  
5 o'clock special dinners.

## HUFF'S CAFE

## PUBLIC SALES

We have purchased 122,00 pair U.S. Army Munson last shoes, sizes 5 1/2 to 12 which was the entire surplus stock of one of the largest U.S. government shoe contractors.

This shoe is guaranteed one hundred per cent solid leather, color dark tan, bellows tongue, dirt and waterproof. The actual value of this shoe is \$6.00. Owing to this tremendous buy we can offer same to the public at \$2.95.

Send correct size. Pay postman on delivery or send money order. If shoes are not as represented we will cheerfully refund your money promptly upon request.

NATIONAL BAY STATE SHOE COMPANY  
296 Broadway, New York, N. Y.

## Oberg Bros. Co.

GENERAL MERCHANDISE  
MERCHANT TAILORING

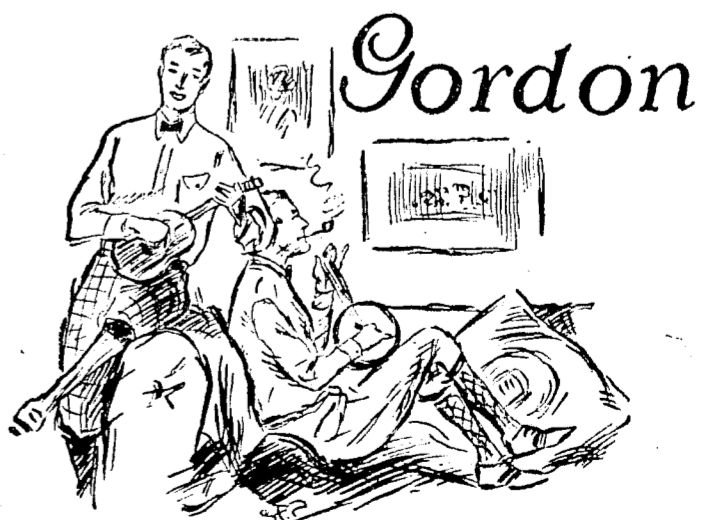
Moscow

Idaho

Having just extended our lunch counter we double the capacity, that you may enjoy the famous hot lunch, including the big baked potato.

Hot waffles, and maple syrup.  
Lunches put up to order

**THE VARSITY GROCERY**  
PHONE 94



## an ARROWSHIRT

MADE of a better oxford, in a fine, tailor-like way. The collar is the work of the expert Arrow Collar makers. The cuffs have buttons or are the French link model — \$3.00  
CLUETT, PEABODY & CO. Inc. MAKERS