

# THE UNIVERSITY ARGONAUT

VOLUME XXVI

UNIVERSITY OF IDAHO, MOSCOW, FRIDAY, MARCH 6, 1925

NUMBER 46

## Today, 10 Years Ago

From The University Argonaut,  
March 5, 1915

Next Monday the University of Idaho Glee Club starts on its first tour into northern Idaho. Its itinerary includes Spokane, Sandpoint, Coeur d'Alene, Wallace, Kellogg and St. Maries. Twenty-six members will make the trip including the String Quartet, which has delighted so many audiences in and about Moscow. Professor Storor has whipped them into fine shape, and he will take Miss Evelyn Cox as soprano soloist, Miss Alice E. Tuller as accompanist, and Donald David and John McEvers as business managers.

The last word in school seats, an adjustable combination desk seat, reached Prof. Soulen's office this week. It will be used in classroom seating demonstrations.

Graduating exercises of the Short Ag. Course men will be held Thursday in the Auditorium. President Brannon will give the commencement address and a good musical program has been arranged.

In looking over the scholastic standings for last semester it has been discovered that seven students in the University made the remarkable record of receiving A's in all their subjects. The honored ones are: Ola Bonham, soph., B. A.; Beth Soulen, Sen. B. A.; Claude Mickelwait, Jun. Ag.; Nora Ashton, Fresh. B. A.; Francis Bailey, Fresh. B. A.; and Florence Mayne, Fresh. B. A.

A complaint is being raised of the large number of girls talking while various speakers have been talking at the university assemblies.

The cadets are getting ready for the annual inspection which will be made about March 10. An officer will be ordered here from Fort Missoula, Montana, to do the inspecting.

An O. A. C. school paper of recent date contains the following item: "Doc" Stewart, coach of O. A. C., and "Pink" Griffith, the Idaho coach, after the basket ball game last night, demonstrated their ability as cue experts before a large crowd of spectators in the Obak billiard parlors. The O. A. C. coach defeated the Idaho commander in both three cushion and straight rail billiards. "Doc" made a run of five in three-cushion, which is quite an unusual run for amateur."

The girls of Ridenbaugh hall are giving a party for the visiting delegates to the Y. W. C. A. district cabinet meeting next Friday.

Professor J. E. Wodsadalek, head of the Zoology Department, has recently been awarded the title of Fellow, of The American Association for the Advancement of Science.

A delightful dancing party was enjoyed Friday night at the Zeta Delta "Informal", which was given at the K. of P. hall. A number of guests were present from Pullman.

## M. F. ANGELL HEADS MOSCOW CHAMBER

University Dean Honored  
By Commercial Body;  
Succeeds Lamphere

Dean M. F. Angell, head of the college of letters and science at the University of Idaho, and for many years a progressive citizen of Moscow and active in chamber of commerce work, was elected president of the chamber of commerce at the annual election, held Wednesday in connection with the regular weekly meeting, at the Moscow Hotel. He is advanced from the vice presidency and succeeds George N. Lamphere, president for the past two years.

## FORESTERS TALK TO STUDENTS

Elers Koch, Assistant District Forester of District 1, U. S. Forest Service, Missoula Montana, is delivering a series of lectures to the school of forestry students on "Forest Management and Working Plans"

## IDAHO HOOPSTERS TIE WASHINGTON FOR THIRD PLACE

Oregon and Aggies Will  
Play for Pacific Coast  
Northern Section Title In  
Two-game Series on Ore-  
gon Floors

Pacific Coast Conference.  
(Northern Section.)

	W	L	pts	Pct
Oregon	6	2	225	.750
O. A. C.	6	2	188	.750
Idaho	4	4	209	.500
Washington	4	4	230	.500
Montana	2	6	187	.250
Montana's op.	6	2	253	.750

(Southern Division)

	W	L	pts	Pct
California	3	1	71	.750
Stanford	1	3	63	.250

(N. B. Montana's standing is not counted in the regular coast conference standings by virtue of an agreement made when the schedule was arranged.)

With four victories and a like number of defeats to their credit, University of Idaho Vandals emerged from the Pacific Coast conference hoop race, northern section, in a tie with the University of Washington Huskies for third place. Heading the percentage column are the Oregon Aggies and the University of Oregon quintets, also tied.

The championship of the division will be decided in a two or three-game series between the two leading quintets set for Friday and Saturday and if a third game is necessary, Monday. The Friday title contest will be played at Eugene and the second at Corvallis. The third will be played on a neutral floor, probably at Willamette university, Salem.

Idaho upsets Dope

Idaho went through a rather hectic season to get into the position she

(Continued on page four)

## MODERN GIRL IS COMEDY THEME

All College Cast Will Pre-  
sent Milne's "The Roman-  
tic Age," March 19-20

A modern young girl with a King Arthurian complex and her amusing search for a "chivalrous knight" among her coterie of admirers is the theme of "The Romantic Age," by A. A. Milne, to be presented to the campus and Moscow by an all-college cast under the direction of Prof. John H. Cushman, March 19 and 20. The particular feature of the play this year is the almost ideal cast which Mr. Cushman has chosen to fit the light comedy.

Marie Gauer, who scored so heavily in a recent one-act play production playlet, "Op 'O My Thumb," does the part of the modern young girl, Melisande, so enamored by chivalry and romance. This part is very similar to the one Miss Gauer carried so successfully in "Op 'O My Thumb," and may be counted on to bring out the many-sidedness of Miss Gauer's dramatic ability.

Cleo DeWitt has been picked to take the part of Mary Knowle, (Melisande's mother), and the strong subtle comedy effect necessary for handling this part is peculiarly adaptable to her particular talent.

Sidney McClellan will do the part of the supposedly "romantic" young man, Gervast Mallory on whom Melisande showers all her favor. McClellan's ability as a versatile character portrayer has already been proved, so he can be counted on to carry through well.

W. L. "Fat" Stephens has stepped out of the gridiron onto the stage with remarkable facility. He handles the character of John Knowle, (Melisande's father), with unusual ease.

Bert Stone as Bobby Coote typically average young man in love with Melisande, but completely out of her world and sight because of his plain unromantic, matter-of-fact attitude and appearance. He end up, of course, by finding his happiness with Jane, who is sensible can cook, and wants a sensible young man.

This part is admirably taken by Hester Yost, who did a similar thing recently in one of the little theatre

(continued on page three.)

## ALUMNI WILL PLAY HIGH SCHOOL FIVE

Pullman Game Fades and Substitute  
Contest Arranged for Friday Night

Moscow high school alumni will play the high school team in what promises to be a fast exciting game in the university gym Friday evening at eight o'clock. Owing to cancellation of two games scheduled with Pullman high, the Moscow team arranged this substitute contest. Some of the University of Idaho finest varsity players will be represented in the alumni lineup, which will probably be picked from the following Idaho students: Ed Nedros, Joe Thomas, Guy Penwell, Gale Mix, Ralph Woody, Elmer Rolse, Ray Armbruster, and Lloyd Randall.

## STATE TOURNEY SET MARCH 12-14

Seven High School Quintets  
Will Play Here for Inter-  
scholastic Title

Seven Idaho high school basketball teams will meet on the University of Idaho floor March 12, 13, and 14 for the Idaho interscholastic championship. Six districts in the state will hold their tournaments this week end and from these tourneys teams will be chosen to enter the annual state meet at Moscow. The Moscow high school quintet, although not champion of her district, will be the seventh team competing, by virtue of an agreement of the high school athletic coaches of the state.

Teams from southwestern, southeastern, northern, north central and northeastern Idaho will compete in the tournament, which opens on the evening of March 12 and continues until the night of March 14. Games will be played afternoon and evening on March 13 and 14.

Double defeat elimination system will be used during the tournament. That means that a team must lose two games before it is eliminated from the championship race.

Some of the hardest fighting in the state has been done in the southwestern district. The sectional tournament will be played at Boise this week end with eight teams taking part. These teams are Caldwell, Boise, Nampa, Parma, Mountain Home, Weiser, Payette and Emmett.

Caldwell, by virtue of her 11 victories out of 13 starts, is hoped to be the strongest contender in the section and as the probable representative from that section in the northern tournament. Driggs is looked upon as a possible contender for the state title.

## PHI DELTS TAKE "A" LEAGUE LEAD

Kappa Sigs Drop Hard  
Game 17 to 15; Phi Meet  
Delta Chi Saturday

Phi Delta Theta defeated Kappa Sigma, 17 to 15 for the championship of "A" league in the intra-mural basketball series Thursday afternoon. The Phi Deltis went strong in the first four minutes of play and started a score which threatened to snow the Kappa Sigs under, but weakened in the following minutes. The Kappa Sigs came back in the second half and narrowed the lead to two points.

The Phi Deltis and the Delta Chis will meet for the intra-mural championship of the campus Saturday afternoon at 2 o'clock in the gymnasium.

	R.F.	Murray
Phi Delta Theta	R.F.	Murray
R. Stevens	L.F.	L. Edelblute
R. Harding	C.	E. Beebe
G. Silverthorne	R.G.	M. Lehrs
A. Nelson	L.G.	E. Erickson
G. Mix		
Substitutions: Phi Delta Theta—		
Hunter for Nelson, Nelson for Hunter.		
Kappa Sigma—Vesser for Beebe.		
Lindberg for Erickson.		

## ENGLISH CLUB HOLDS "BROWNING" MEETING

The "Browning" meeting of the English Club held Wednesday night in the "U" hut at 8 o'clock was pleasing to its attendants. Mr. Michael gave readings on the following pieces: "Andrea Del Sarto," "My Last Duchess," and "Soliloquy in a Spanish Cloister." Florence Selby sang some adaptations of Browning's love lyrics. Mr. McLaughlin, who was to give a talk on "Browning Paradoxes," was unable to appear.

## IDAHO ORATOR WILL VIE FOR HONORS IN NATIONAL CONTEST

InterCollegiate Forensic  
Meet Receives Faculty  
Approval; Winner In  
Finals Will Be Awarded  
\$2,000 Prize

The National Intercollegiate Oratorical contest on the constitution has been approved by the faculty committee on forensics, of which Dean R. M. Davis of the law school is chairman. A representative from the University of Idaho will be chosen under the direction of Professor W. M. Michael of the English department.

The National Intercollegiate Oratorical contest is held for the purpose of increase interest in and respect for the constitution of the United States. It is financed and conducted by the "Better America" federation of California as a contribution toward better and more intelligent citizenship.

The seven cash prizes will be paid at the grand final meeting in Los Angeles in 1925, the first prize is \$2,000 and a total of \$5,000 is being offered in six other prizes.

The orations must be original, must require not more than ten minutes for delivery, and must be on any one of the following subjects:

The Constitution, Washington and the Constitution, Hamilton and the Constitution, Jefferson and the Constitution, Marshall and the Constitution, Madison and the Constitution, Webster and the Constitution, Lincoln and the Constitution.

Eligibility:

Any bona-fide undergraduate student in any college or university in the United States is eligible, in case any contestant finds it necessary to

(Continued on page three)

## FORESTERS HOLD ANNUAL BANQUET

Ninety-Five Hear Speakers  
and Musical Program;  
Work of School Outlined

Ninety-five Associated Foresters of the University of Idaho and their guests were present at the annual banquet given by the associated forestry students at the Blue Bucket Inn Tuesday evening. From the invocation by Rev. H. O. Perry to the final words of Toastmaster C. W. Watson, the dinner and entertainment was a great success. Snappy interesting talks, musical selections and comical monologs filled the entire evening with merriment.

Professor Watson, acting as Toastmaster, kept the crowd in continual laughter with his snappy introductions.

Rev. Perry, as the first speaker, talked on "An Amateur's Appreciation of Reforestation" and assured the foresters of his interest in their work.

Forestry and Business Man

In introducing Mr. Geo. N. Lamphere as the second speaker, the toastmaster referred to him as a pioneer in this immediate vicinity connected with business houses in Moscow. He confined his remarks to "Forestry and the Business Man." Mr. Lamphere took his audience back to the time when he first set foot in this vicinity, in Palouse, Wash., in 1890.

The orchestra, composed of Messrs. Hanson at the piano, Jordan on the banjo, Woods on the cornet and Bieler on the saxophone, supplied some live peppy music which called for several encores.

127 In School Forestry

Mr. E. W. Renshaw a senior in the school of Forestry, and representing the Associated Foresters on the program, stated that there were 127 forestry students matriculated this year and out of this number there were 12 that came from outside of our own country. Six were from Canada, three from the Philippine Islands, one from India. Twenty-four states were represented in the enrollment. Dividing them into classes Renshaw pointed out that there was one graduate student nine seniors, 26 juniors, 25 sophomores, 47 freshmen and 19 short course men.

Elers Koch, of the U. S. forestry

(Continued on page four.)

## FIFTY CO-EDS OUT FOR TRACK WORK

Women Will Start Intensive Practice  
Next Week; Seven Events Scheduled

Women's track is on the way to becoming an institution on the Idaho campus, according to the turn-out of more than 50 co-eds, Tuesday afternoon. Practice will start next week.

As a starter in this branch of women's athletics only seven events will be held; namely the shot put, basketball throw, baseball throw, the one hundred and the fifty yard dashes relays, running high jump and the running broad jump. No girl will be permitted to enter more than three events.

Notices of practice hours will be posted on the bulletin board.

## S. A. E. TAKES DEBATE CUP FROM DELTA CHI

Theta Epsilon Will Present  
Trophy To Winners At  
Commencement

Sigma Alpha Epsilon defeated Delta Chi in the final debate of the intra-mural series held in room 201 Ad building Tuesday night. Resolved: "That the forty-five counties of Idaho should be consolidated into eleven governmental units."

Ben Mahoney and Lloyd Bertrand upheld the affirmative for S. E. A. and Fred Cromwell and Charles Brabb presented the negative for Delta Chi.

The judges were, Professor S. A. Harris of the school of law, Miss Camille McDaniel, Miss Althea Sheldon of the English department.

The winning team will be presented with a cup at the commencement exercises in June by the Theta Epsilon honorary debate fraternity.

"This final debate was one of the outstanding debates of the season," said W. J. Montgomery, intra-mural debate manager. "This closes the series of debates for this year and the indications are that the great success this year will prove to be a firm foundation for a continuation of the activity next year."

## ATHLETIC COACHES' GAMES CALLED OFF

Differences between University of Idaho and Washington State college coaches, which were to have been settled by a two-game basketball series are not sufficient for a battle this year, it is indicated in an announcement from the office of "Matty" Mathews to the effect that the Cougar Pops are not in physical condition for a game at present.

## INCREASE SHOWN IN MODERN LANGUAGES

Reports Indicate Steady  
Growth in Enrollment;  
Spanish Most Popular

An increase of 515 in the yearly enrollment of Idaho students in modern languages since 1913, marks the report given out yesterday by Dean J. G. Eldridge, head of the department of modern languages. Though a steady increase was made by the department as a whole during this period, there were great fluctuations in the number taking the different courses.

German for the first three years had a larger enrollment than did all the others combined. It decreased to almost nothing during the war but has regained some of its old popularity bringing its total up to 52. Its enrollment during October of the following years was as follows: 1913, 170; 1914, 147; 1915, 140; 1916, 118; 1917, 82; 1918, 5; 1919, 35; 1920, 29; 1921, 28; 1922, 32; 1923, 46; 1924, 52.

French came into greatest popularity during the time of German's low enrollment. In 1918 it reached its peak when 301 students studied it. The enrollment of French during October of the following years was as follows: 1913, 62; 1914, 51; 1915, 72; 1916, 76; 1917, 96; 1918, 301; 1919, 129; 1920, 191; 1921, 216; 1922, 219; 1923, 213; 1924, 294.

Spanish, after an unpretentious beginning gained in popularity and now has a much larger enrollment than any other language. Its October enrollment during these years was as follows: 1913, 24; 1914, 13; 1915, 44; 1916, 71; 1917, 41; 1918, 0; 1919, 8; 1920, 112; 1921, 244; 1922, 325; 1923, 309; 1924, 430.

## UTAH DEBATERS WIN 3 TO 0 VICTORY OVER IDAHO AFFIRMATIVE

Keith Murdock, Visiting  
Speaker, Presents Strong  
Argument in Final Men's  
Triangular Staged Last  
Night in Auditorium

The University of Utah men's negative debate team downed the University of Idaho affirmative team last night in one section of the triangular debate staged among the Universities of Montana, Utah, and Idaho. The Utah debaters received the unanimous vote of the judges. The question was "Resolved, That Congress Should Have the Power, by Two-thirds Vote, to Overrule Decisions of the Supreme Court Declaring Acts of Congress Unconstitutional."

"The United States has outgrown the original purpose which created it," declared Herbert Wunderlich, first affirmative speaker, who opened the debate. The state legislatures are not qualified to amend the constitution because of their limited experiences, and the amending power should revert indirectly to the people through Congress, according to Wunderlich.

Keith Murdock, the first negative speaker, maintained that to give congress the proposed power would remove the nation's only check on her great legislative body. He continued that it would be subordinating the constitution to congress, and that because of its political upheavals, Congress is not a fit body to have this power.

Becher Proposes Flexibility  
Edmund T. Becher, final affirmative speaker said that the proposed measure would not mean overthrowing the constitution, but merely making it flexible enough to keep pace with

(Continued on page four)

## CO-ED HOOPSTERS CLASH NEXT WEEK

Games Slated Tuesday and  
Thursday; Seven Groups  
Enter Teams

Co-ed hoopsters in the different campus group will clash Tuesday and Thursday of next week in the annual basketball tournament. Twenty-five points toward winning the intra-mural cup will be awarded to the victorious house. There is no admission charge to this tournament.

Lillian Writ, head of the physical education department, will act as referee.

The teams were chosen this week from among those making the best showing and are as follows:

Alpha Chi Omega; Evangeline Bennett, M. Carter, M. Updike, D. Teats, D. Sowder, M. Fisher and J. Nash. Kappa Alpha Theta; E. Povey, E. Backus, F. Howard, R. Preuss, McConaghy, M. Dickenson and H. Smith. Kappa Kappa Gamma; E. Cooper, R. White, E. Farmin, R. Fraser, V. Alley, H. Campbell and E. Lafferty.

Gamma Phi Beta; H. McConnell, L. Simons, W. Moody, G. Thompson, C. Hill.

Pi Sigma Rho; G. Hagen, L. Payne, P. Clare, H. Neffler, F. Sullivan, I. Aczenaga and V. Johnson.

Delta Gamma; H. Hinz, J. Johnson, L. Shaw, K. Pence, D. Darling, M. Alvord and M. Brown.

Ridenbaugh Hall; Miller, K. Nelson, G. Gillette, H. Austin, H. Stillman C. Volkenburg, M. Partner.

Forney Hall; H. Roe, K. Healy, S. Felt, G. Smith, D. Manning, G. Huston, A. Bowdish.

Margaret Carter, manager of girls' basketball announces that each team member will receive 25 points in W. A. A. and each "sub-player" will receive 15 points toward award, provided they appear in uniform at the time of the tournament matches.

CALENDAR

March 7—Sigma Dinner dance.

March 14—Associated Women Student's dance.

March 19—All University plays.

March 20—All University plays.

March 21—Sigma Pi Rho dance.

Forney hall dance, S. A. E. Formal dance.

March 27—Recital by Prof. Carl Claus, Pi Beta Phi Formal dance.



# THE UNIVERSITY ARGONAUT

Member of the Pacific Intercollegiate Press Association  
Published by the Associated Students of the University of Idaho Semi-weekly

Rates: Per year, \$2.00; except subscriptions outside of the United States, which are \$2.50. Subscription included in the Alumni dues of \$3.00 per year.  
Entered at the postoffice at Moscow, Idaho, as second class matter.  
Argonaut Office in U. Hut. Office Phone 309  
Editor's Phone 165. Night Office Phone, Monday and Thursday, 109

## ARGONAUT BOARD

Leo Fleming Wallace C. Brown Lewis A. Boas

Wallace C. Brown, Editor Fred M. Taylor, Manager

Gordon Hockaday, Managing Editor E. A. Taylor, Circulation Manager

## COPY EDITORS

Floyd W. Lansdon Charles Kincaid Clair Killoran  
George Burroughs Fred Sherman Albert Alford

## NEWS STAFF

Everett Erickson Paul Stoffel Clair Reem  
Adolph Emskamp Ruth Aspray Mandell Wein  
Marguerite Barlogi Charlotte Jones Fred Moll  
Blaine Stubblefield Dorothy Darling Dorothy Sowder  
George Castle Harrison Simpson Harold Tinker  
Romine Ostrander Lauren Reed Walter York  
Phillip Cox Gene Williams Lucille Anderson

## Idaho Glee Clubs, 1925

With promise of two of the finest glee clubs presenting two of the best and most suitable repertoires in the history of Idaho music work, the men's and women's clubs are putting on finishing touches preparatory to making their annual tours. The men's club is scheduled to appear before the assembly audience next Wednesday, and arrangements are being made for performance of the women's glee organization before the students soon.

Sectionally speaking, the men's glee is exceptionally strong, particularly the bass voices are unusually good. The women's club has arranged a clever cantata which will be the nucleus of its program. "Peter Pan on a Summer's Day" gives great opportunity for expression of harmony, background and atmosphere by the whole club. The entire effect is as entertaining as it is unusual.

Ever since the War, the tendency among collegiate glee clubs has been to forsake rich classical numbers for the blah-blah jazz variety. This resulted from the popular clamor for just this sort of pieces. Since then, however, the reaction has swung to the opposite extreme, and at present the Harvard glee club carries a program of wholly staid, classical and beautiful numbers.

Neither extreme can satisfy for long. The Idaho clubs this year have arranged programs including, as far as possible, selections from both kinds of pieces. A middle-ground has been attained. And this arrangement, coupled with the exceptionally strong lineup of voices, should achieve no end of fine reputation throughout the state.

It is certainly to be hoped that Idaho students get an unbiased conception of their glee clubs' importance on the campus and throughout the state. Glee clubs make a decidedly important impression wherever they go. And it is equally true that they reach and impress a class of people in the state untouched by the university's other outside activities.

When Idaho's glee clubs make their tours they are not going as guests of alumni in each particular Idaho town. Their members do not expect loud and vociferous receptions as individual Idaho students. They are traveling as an integral part of an activity designed to give additional inklings of campus life and progress at Idaho's state university.

## The U. of I. Is the "U" for You

The fine spirit and wholesome loyalty of Idaho alumni throughout the state is typified in general by the good work of her graduates in the Malad city schools which has recently come to the attention of the campus. Malad is located less than 20 miles from the southern border of the state in the extreme eastern corner. If any city in Idaho has excuse for sending its high school graduates to colleges and universities outside the state, Malad has.

But here is a senior in the Malad high school voicing in unusually fine style many logical and guilt-edge proofs of the advantages and superiority of the University of Idaho over outside institutions for Idaho young men and women. And his essay on "Why the U. of I. is the 'U' for You" is only one of the many written in the same fine tenure.

Surely Idaho, its university, and its alumni can be mighty proud of such a tribute.

Idaho students: are you forgetting . . . Do you want to mar your campus by unsightly paths worn in the grass just in order to save less than 20 seconds time necessary to walk around the walks to the new science hall? Is your campus a playground, or a beautiful green background for her stately buildings? Think it over.

## IDAHO GRADS ON MALAD FACULTY DONATE FREE TRIP TO UNIVERSITY AS FIRST PRIZE IN ESSAY CONTEST

Four Idaho alumni on the Malad high school faculty will award to the winner of first place in the "Why the U. of I. is the 'U' for You" prize essay contest conducted recently in the senior class of that school a railroad ticket to the University of Idaho, to be used next fall. Second and third prizes in the contest are an Idaho "Gem of the Mountains," and a year's subscription to the University Argonaut.

"Evidence of the splendid support and cooperation of Idaho alumni is probably nowhere more conclusively given than in this instance in one of the most southeasterly cities in the state," said President A. H. Upham when commenting upon the Malad essay contest. Malad is probably the farthest away from the university of any sizeable city in Idaho.

Superintendent L. A. Thomas, '21, head of the Malad city schools, is the initiator of the essay contest idea and the three other Idaho grads who are associated with him in the high school have given it the greatest of support. They are: J. R. Burbidge, '24, head of the science department; Luella Kirkendall, '24, of the history department; and Sylvia Smitham, '24, who teaches English and Latin.

The five best essays were sent to President Upham of the university by Superintendent Thomas with the instructions to have G. M. Miller, head of the Idaho English department, Leo Fleming, president of the A. S. U. I., and himself grade them and pick the winners. Basis of judging was value of content, structure, correctness of style, and power of style.

This was done and the winners in order are: D. Kenneth Thomas, first;

Kenneth Larson, second; Marianne Pierce, third; LeRoy Roberts, fourth; and Lottie Jones, fifth.

The first prize winning essay follows:

## WHY THE U. OF I. IS THE U FOR YOU.

Fellow high school graduates of the State of Idaho: we are nearing mile post number two on the road of education and making preparations for entering higher institutions of learning to finish our preparation for life's work.

We have leaders to-day who have struggled and planned until they have guided a western territorial possession into the union and is now the beautiful prosperous "Gem State" of the west. Our natural resources, our commerce and our industries have grown and developed from the beginning. Most important of all our educational systems has been and is being developed until Idaho ranks among the leaders in education. Most important and remarkable is the development of our wonderful university at Moscow has made. It now ranks with any of the western universities in educational instructors and vocational training, and ranks far above many of them in many respects.

The development and growth of the university has been remarkable. In 1897 and '98 when the institution was five years old, the enrollment was 248 students; in 1907 and '08 when it was 15 years old the enrollment was 454 students; in 1917 and 18 when the institution was 25 years old, the enrollment was 594 students and in 1923 and 24 when the institution was 31 years old the enrollment was 1941 students. This remarkable increase shows that each year Idaho students are beginning to see the benefits of attending their own university.

## Patronize Home "Industry"

If you were a manager of a company which had instituted a business, you shared its taxes and expense, and likewise its profits, would it be right and would it seem reasonable for you to patronize your competitor in preference to your own business? Apply this principle to our university; it is your institution, a share of your taxes go toward its maintenance and development. Is it reasonable, then, and is it right that you should patronize the institution of some other state by paying tuition to enter its school?

The University of Idaho issues a degree in any course you wish to study except medicine, and a four year pre-med course is given that gives you a standing entitling you to enter any medical college. Idaho is one of the greatest white pine states in the union. This is why students come from all over the United States and even parts of Europe and Asia to study in her school of forestry. Likewise are her school of mines, agriculture, law, engineering, letters and science and so on famous. You are dealing with the development of Idaho. If you are studying in some other school its book-learning may be wonderful but when you come back to Idaho to apply the laws and principles, you have learned, you have your practical education yet to learn. At the University of Idaho this is over-come because you have the practical work and are studying the development of Idaho. For example: if you are studying law and go to Stanford university or some other school, you may learn the fundamentals of law thoroughly from its beginning until now, but when you come back to Idaho to practice you have the Idaho laws yet to learn. At the University of Idaho you learn these fundamentals just as and if not more thoroughly, and the statutes law books of the state of Idaho are before you always. So when you have completed your course you are ready to practice. The most prominent lawyers and other men of letters in the west, have the highest respect for Idaho law students, enough to prove that the course is complete and practical. The classes of the university are large enough and yet small enough that the students get proper instruction and have a chance to express their views and the instructors have close enough check on them that they can't slide through. So if a student wishes to go where he can make the best of his school work and take advantage of his opportunities, the U. of I. is the place for him.

## Associations and Friendship Count

One of the greatest if not the greatest assets in life is its associations. The greatest and most lasting friendship is that friendship formed in college. The best chum is a college chum. The real development and progress comes through association and exchanging of ideas with one's fellows. If you go to a Utah or some other aristocratic school which is true of most Utah schools, you return to Idaho without the companions you should have to associate with as you pursue life's work. You return without that ever jovial spirit, that pleasant personality and that democratic feeling that the University of Idaho breeds into every single individual who goes there to school. The U. of I. is acknowledged and congratulated by every school for its sportsmanship and wonderful democratic spirit. An ever jovial, joyous spirit has been woven into the school, and every student who goes there acquires it. Environment is half of man's life, and in this phase the U. of I. leads them all. The University of Idaho is a little community within itself. It's your home: your class mates are your neighbors, and your thoughts are always at school. It isn't like many schools such as those in such commercial centers like Salt Lake and Ogden, where every sort of people in the world are associating with you, where crime and lawlessness exerts its influence, where school is left and forgotten until the next day. There isn't a Pantages, an Orpheum theatre to lure your interests from school; but instead we have our clean, wholesome U. of I. situated in the little town of Moscow where every person's interests are for the university. The social affairs are numerous enough to give the students all the entertainment he wishes if his time affords him opportunity, and they are all conducted by the school.

On Sundays, unlike the busy commercial centers with their electric atmospheres, morbid characters, and the gay night life, the little community of Moscow with its twenty different church denominations, devotes its time to religious work and service for all those who are desirous of participating in religious work. Religious work is stressed at the U. of I. because it is for the betterment of its students.

One of the arguments put up by people of southern Idaho against going to the U. of I. is the long distance and expense of getting there. By deep consideration and thought, it can easily be proven that it is really cheaper to go to the U. of I. than to some other state's school. In any Utah school that you go to, the tuition will cost as high as seventy-five dollars and higher, and in some schools the tuition is as high as five hundred dollars. This money paid for tuition will pay your train fare there and back and in some cases also pay your expenses for a time—no tuition being required from Idaho students at the U. of I. If a student is a short distance from home he will find means one way or another to get home several times during the school year. The fact that Moscow is a long distance away makes it impossible for students to come home for vacations, and so in the long run it is far less expensive to go to the U. of I. than a school in a neighboring state.

## Opportunity for Self-support.

The opportunities for working ones way through school at Moscow are innumerable. The heart and soul of the people of Moscow are with the students who are striving for an education, and are always ready to help them in finding work to aid them through school. The percentage of self-supporting students at the U. of I. is larger than any other school.

There are some necessities which the school still need, but are striving each year to build on. More buildings are needed. If the Idaho students will support their school the taxpayers and the legislature will make extra effort to continually build on to our school.

Fellow students: consider these points, think of your future citizenship of Idaho, think of the unique problems you will have to solve in the future, think of the associations you are going to make in future life, think of the expense of your future education and think of the practical education you will have to have before you can properly apply the laws and principles you have learned. We must stand in this age upon our feet just as our fathers in their age stood upon their feet. We must face our problems squarely and deal with them on their own merits. Our unique tasks we must meet with unique solutions. If we are to be intelligently loyal to our state, our parents, and those who have struggled before us, we cannot do it by taking over their beliefs, practices and institutions just as they left them. Our loyalty must take rather the form of appropriating their ideas, of imitating their faith, and their courage, and of attacking our own large problems in the same spirit in which the best of those who have gone before attacked theirs, and as a product of their struggles have developed the wonderful "Gem State of the West." Fellow students, allow me to ask the question: Can we do these things and patronize the educational institutions of another state? Can we further the progress of the U. of I. by going the U. of I.?

As it is said the Indian whispered to Edahho, The Light Upon the Mountain. A high and troubled vision is the west. To all men different yet to all the same. To the Indians a sky spirit; to the explorers the distant shining

peaks; to the traders, the brush of the silver fox; to the missionaries, the sign of God; to emigrants, the promise of a home; to prospectors, the glint of yellow gold; to cowboys, the starlight on the range; to troops, the rosy glow at ravelle; to homesteaders, the snow upon the hills; to all men different, yet to all the same.

When all these things are considered it really convinces one that Idaho truly is the "Queen of All the West." Fellow students, let our aim be to make the queen of all the west more stately, to make the light on the mountains shine more brightly. Let us strive to develop her natural resources and make her institutions of learning such that they will be envied by other states. Think of the golden opportunities that the U. of I. offers you to prepare yourself for lives that will be serviceable to your state and country. Fellow students take time to consider these points, let these thoughts sink deep into your soul and you will readily decide that the U. of I. is the U for You.

## SUPPORT OF TOURNEY URGED BY MATHEWS

High School Basketball Contests May Be Lost If Tickets Are Not Sold

Reminding the student body of the loss of the interscholastic track meet Coach R. L. Mathews at the A. S. U. I. assembly last Wednesday urged that students support the state interscholastic basketball tourney by selling all of the tickets or that contest would be lost to the University also. The track meet is to be held at the Tech. at Pocatello because sufficient money was not raised on the meet when it was held here last spring.

Dean French talked on leadership. She stated that the great need of the state of Idaho is leaders. Too many of the leaders of the university go out into other states after leaving college. The leaders of the University will someday be the leaders of the state said Dean French and need of more is very evident.

Part of the assembly was spent in learning the new Alma Mater song.

The Shop of Character!—The Idaho Barber Shop! Adv.

## J. T. CROOT

The Tailor

for

COLLEGE MEN and WOMEN

CLEANING and PRESSING

## The Cash Grocery

"Home of Good Eats"

C. W. LANGROISE, Prop.

## CREIGHTON'S

The Home of

HART SCHAFFNER & MARX

GOOD CLOTHES

## WE HAVE THEM!

College hair cuts for college men and women

## DE LUXE BARBER SHOP

RUSSELL & MAURER

Next to campus

## THE BON TON CONFECTIONERY

Students, we appreciate your patronage. We cater to your wants. Make this place your headquarters while down town.

"We serve to please"



Use It  
Anywhere!

THE Remington Portable Typewriter carries its table on its back. You can use it anywhere—at any time.

It is a complete typewriter with four-row keyboard—just like the big machines. Also many other useful features of the office typewriter. Yet it is small, compact, and fits in a case only four inches high.

Price, complete with case, \$60  
Easy payment terms if desired

## Remington Portable

HODGINS'

REMINGTON TYPEWRITER CO.

Spokane, Washington







"Oh, it's easy enough to be pleasant  
When life flows along like a song"  
Thus the poet. And he goes on to  
say that the man worth while is the  
man who can smile when everything  
goes dead wrong.

There's a lot in that, too, but did  
you ever stop to consider that that  
might simply illustrate the value of  
contrast? How about frowning and  
looking downhearted when everything  
is going right. That would be streng-  
thing the will-power, for it would be  
doing something that isn't easy. And  
think of the curiosity you could ar-  
ouse. The meaning of all this? There  
isn't much. It's mere a suggestion—  
but consider the possibilities!

Dean French was a dinner guest of  
Beta Theta Pi Wednesday evening.

Phi Delta Theta dinner guests Wed-  
nesday: Mrs. Stolle, Mary Newman,  
Pearl Glen, Willie Moody, Constance  
Hill, Helen Stutz, D. Earhardt, L.

Sigma Nu entertained at dinner  
Thursday evening for: Messrs. Ed-  
ward Johnson, Edward Bozarth, Ar-

nold Calvert, Arthur Dawald, Wey-  
man and Severence.

Jenness, Pearl Tschirge, and Char-  
lotte Jones.

Dinner guests of Pi Beta Phi Wed-  
nesday were Misses Dolly Dunn and  
Meroe Cornelson.

Pi Beta Phi announces the pledg-  
ing of Edith Sanborn of Spokane.

Alpha Chi Omega Sunday dinner  
guests were Jean McCracken, Helen  
Lommason, Mrs. Lyle Tapper, and  
Erma Scholtz.

Alpha Chi Omega Wednesday din-  
ner guests were Prof. and Mrs. Piper  
Prof and Mrs. Stewart, and Prof. and  
Mrs. Michaels.

Sigma Chi Dinner guest Tuesday  
was Dean M. F. Angell.

Sigma Chi Dinner guest Thursday  
was Frank Stanton.

Kappa Sigma Wednesday dinner  
guests were: Dean and Mrs. Miller,  
Dr. and Mrs. Schmitz, and Mr. and  
Mrs. Watson.

## PIANO RECITAL SLATED FRIDAY

"Player" Concert Arranged by Music  
Department Head; Citizens Invited

Invitation to an "Ampico" music  
recital to be given in the university  
auditorium next Friday evening at  
eight o'clock, has been extended by  
Prof. E. O. Bangs of the university  
music department. The "Ampico" is  
a highly-improved player piano which  
will be imported specially for the re-  
cital from Spokane by Tull & Gibbs  
music company of Spokane.

This remarkable machine not only  
reproduces tone and volume as an  
ordinary player piano does, but it al-  
so catches and reproduces the feel-  
ing and quality of the work of in-  
dividual artists. The one being used Fri-  
day evening in the recital is built in  
a Mason-Hamlin standard piano.

Besides pieces of the most famous  
pianists in the world, "Ampico" will  
be used to accompany solos by Prof.  
Carl Claus on the violin, and Miss  
Margaret Armstrong, vocal. The re-  
cital will be free to students and Mos-  
cow citizens who are urged to attend  
said Prof. Bangs.

Tannhauser Overture.....Wagner  
Played by Josef Hoffman

Etude, Op. 25 (Butterfly).....Chopin  
Played by Mischa Levitski

Berceuse, D Flat.....Chopin  
Played by Mme Teresa Carreno

Polonaise, A Flat.....Chopin  
Played by Leopold Godowsky

Violin Solo—Air on a G String  
.....Bach

Carl Claus accompanied by the Ampico

Scherzo Op. 16.....Mendelssohn  
Played by Josef Hoffman

Oriente.....Amani  
Played by Guy Maier

Toy Soldier March.....Kreisler  
Played by Fritz Kreisler

Polka de W. R. ....Rachmaninoff  
Played by Sergei Rachmaninoff

Soprano Solo—Vissi d'Arte  
.....Puccini

Margaret Armstrong accompanid by  
the Ampico

Rigoletto Fantasia.....Verdi-Liszt  
Played by Ferruccio Busoni

Dance of the Gnomes.....Liszt  
Played by Ferruccio Busoni

Hungarian Rhapsodie, No. 6.....Liszt  
Played by Mischa Levitsky

## 47 ARE ELIGIBLE FOR SPANISH CLUB

Creditable Grades of Large Number  
Taking Language Results in  
Many New Members

Forty-seven students are eli-  
gible for membership in the Spanish  
club according to a recent announce-  
ment. The organization is composed  
of students who have received a  
grade of "A" of are either majoring  
or minoring in Spanish. The students  
who have such qualifications are auto-  
matically elected to membership.

The first meeting for the new mem-  
bers will be held tonight at 7:30 at  
Forney hall. The new members as  
announced by Blanche Boyer, secre-  
tary are: Jean Collette, Floyd Otter,  
Margaret Partner, Herbert Shook,  
Helen Campbell, Margaret Cuddy, Jo-  
sie Hansen, Bernadine Hatfield, Alice  
Lundquist, Norma Mattenson, R. C.  
Ostrander, Nina Wilson, Iris Armbrus-  
ter, Pearl Cordray, Edward Equals,  
William Bolander, Edna Burr, Mary  
Labo, Helen Nelson, Irene Peterson,  
Gen Rink, Luxie Walker, Ruth Col-  
lins, Maud Garnett, Gertrude Dris-  
sen, Robert Dunn, Mildred Weston,  
Lucille Anderson, Sybil Felt Eleanor

Level, Olive Libby, Charles Telford,  
Marjorie Mosher, Isabel Wilson, Mar-  
lys Shirk, Farnsworth Jennings, Dor-  
othy Gorrie, Ray Currie, Thyra Kelly,  
Beardslee Merrill, Fred Butler, Ruth  
Christen, Laree Johnson, Herbert  
Wunderlich, Phillip Anderson, B.  
Smith and A Montgomery.

### Y. M. C. A. TO MEET

"How can group life be made Chris-  
tian?" will be the topic of the dis-  
cussion at the next weekly meeting of  
the Y. M. C. A. to be held March 12,  
at 7 o'clock at the University hut.  
The same subject is to be discussed  
at the various group meetings to be  
held on the campus during this week

### IDAHO ORATORS WILL VIE

(Continued from page one)

drop out after entering the contest  
an alternate will be chosen.

For the purpose of this contest  
the country is divided into seven re-  
gions and Idaho will be included in  
the Pacific region, including Wash-  
ington, Oregon, Montana, Utah and  
California. One representative from  
each state will be chosen to compete



Oh Mabel Billy Murray  
I Couldn't Get to It in Time  
with Ukulele and Guitar  
Wendell Hall

Victor Record No. 19565. 10-in.

You and I—Fox Trot  
(from "My Girl")

Jack Shilkret and His Orchestra  
Will You Remember Me?  
—Fox Trot

Waring's Pennsylvanians

Victor Record No. 19571. 10-in.

Nobody Knows What a  
Red-Head Mamma Can Do  
—Fox Trot

George Olsen and His Music  
I Can't Stop Babying You  
—Fox Trot

Charles Dornberger  
and His Orchestra

Victor Record No. 19580. 10-in.

## HODGINS'



in the finals to be held in St. Louis  
for this region.

In order to narrow down the con-  
testants in each region the initial re-  
gional selections will be based on  
written essays. Each duly designated  
college representative must submit  
four typewritten copies of his or her  
oration to the contest director not  
later than April seventh, and the  
original copy of each contestant here  
must be in the hands of the com-  
mittee here not later than March 31.  
Professor Michael urges that each  
student wishing to try, out see him  
before March 10. The contestant from  
Idaho will be chosen on the basis  
of composition as set forth in the  
essay submitted. For further infor-  
mation on the contest see Professor  
Michael in room 204 Ad. building.

### MODERN GIRL IS THEME

(Continued from page one.)

playets in th "U" hut.

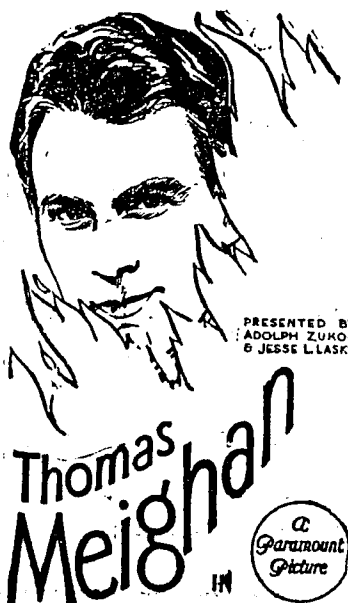
Margaret Clark as "Erin", the blithe  
country boy who meets the knight in  
the woods in a charming scene in  
the first act, carries her part very  
appropriately.

Beardsley Merrill as "Gentleman  
Susan", the beggar-peddler, who goes  
through life philosophising and bring-  
ing out whatever moral the play may  
be said to have is done very well. Com-  
panionship is the essence of his philo-  
sophy, and that seems to be the thing  
that the two young lovers ultimately  
find in their quest for romanticism a  
la 1925.

Marie Hogenson will take the part



Sunday and Monday  
Only



JOSEPH HENABERY  
Production

### THE ONLY AND BEST PLACE

of its kind in Moscow

Here is where you get a square deal and a square meal. Once  
our customer you will remain a customer. Give us a trial and  
satisfy yourself that it is true.

The Home of the Big Baked Potato

### THE VARSITY GROCERY

of course

PHONE 94

WOOD & RALPH

### WE REPAIR ALL KINDS OF SHOES

## FRIEDMAN'S SHOE SHOP

Next to Varsity Grocery

### TAKE A WALK

In the spring evening air to

## ORIOLE NEST



to Europe -  
**ROYAL MAIL**  
steam packet



Ladies' and Gents'

FINE WORK OUR SPECIALTY

## STEWART'S SHOE SHOP

127 E. Third Street

## THIRD STREET MARKET

FRESH and CURED  
MEATS

Phone 248

The home of quality Fish, Meats  
and Poultry.

**JCPenney Co**  
A NATIONAL INSTITUTION  
571 DEPARTMENT STORES  
MOSCOW, IDAHO

## Spring Apparel

In a New Display of  
Distinctive Models!

### New Coats Have Arrived Make Your Selection Now



Get all the possible wear  
from your Spring Coat by  
buying now! You will have a  
large selection from which to  
choose—and a most attractive  
selection!

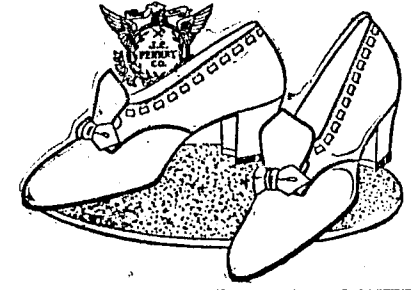
### Priced Reasonably

These chosen styles of  
Spring are priced within your  
reach. Splendid Coats, silk  
lined, trimmed becomingly,  
are priced at only

**\$19.75**

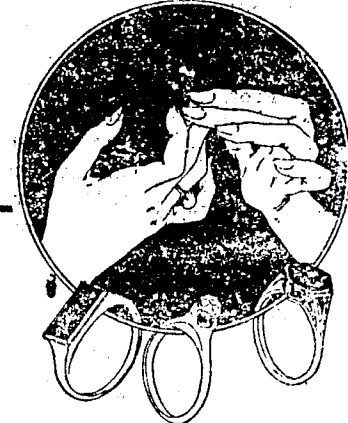
### Colonial Tongue Pump Smart Lines—Good Value

A smart shoe with  
Frenchy lines. In all-  
leather Tan Calf with  
mahogany trim and  
covered Military heel.  
Moderately priced at—



**\$5.90**

To be paid more, do more than you The Shop of Character!—The Idaho  
are paid for. Barber Shop! Adv.



## Exceptional Rings

Exceptional in beauty and exceptional in quality. That the prices  
at which we are offering them are exceptionally low goes without  
saying. Your choice from the following stones and designs:

Ladies' Rubies .....\$3.00 to \$22.50  
Men's Rubies .....\$6.00 to \$18.50  
Diamonds mounted in latest style, white gold mountings  
from .....\$15.00 to \$300.00  
See our stock before purchasing a diamond. We have a large sup-  
ply of true gems and guarantee quality and price.

### CORNER DRUG & JEWELRY STORE

## COLD STORAGE GROCERY

Phone 291

Phone 15

Delicious fig bars, fresh an tasty, lb.....15c

Guaranteed whipping cream  
1/2 pint .....15c; 1 pint .....25c

Fresh milk per quart .....12c

Cre-cot it's great, try a pound .....25c

"If it's good to eat we have it"

## BELL TELEPHONE CO. SEEKS MEN AT IDAHO

Representatives Here March 19, to Interview Students; 3 Men Picked Last Year

With three Idaho men performing successfully as the result of last year's hand-picking, two representatives of the Bell Telephone company will arrive on the university campus March 19 to interview seniors in the school of engineering or the department of business administration in regard to possible future employment with the company.

The three Idaho men placed with the Bell company last are: George Dean of Lewiston, who is in the San Francisco office making a forecast of the telephone needs of all cities on the San Francisco bay for the year 1945; Walter Casebolt of Genesee is in the Seattle accounting department and is at present devising forms and blanks to be used in recording plant depreciation; and George Gahan of Boise, who is also in the Seattle office making a study of the various uses of telephones in different enterprises.

## COSMOPOLITAN CLUB CHANGES TRIP DATE

The Cosmopolitan club has postponed its trip to Pullman until March 14, it was announced Thursday. When a joint meeting with the Cosmopolitan group of Washington State college will be held. The trip was planned for this Saturday.

The meeting is to be entirely social. The members of both clubs will participate in the entertainment and refreshments are to be served. It is the plan of the local Cosmopolitan club to entertain the group from Pullman here later in the spring.

## UTAH DEBATORS WIN

(Continued from page 1)

social and economic progress. He explained that it would take two years to overrule a vote by the supreme court and this would give the people ample time to express their opinion through their congressional elections.

The method of amending the constitution has been, and still is, flexible enough to meet all national problems, argued N. F. Hicken, in concluding the negative construction. He stressed the fact that the present method of amendment is still acclaimed as one of the strongest features of our governmental system.

Both sides used different angles of the Child Labor Amendment now before the state legislatures, in strengthening their respective contentions.

Dean F. A. Thomson, of the School of Mines, was chairman of the contest. The judges were: Prof. E. D. Lewis, Department of English, Lewiston State Normal; Prof. E. F. Dummer, Department of Economics, Washington State College; and Mr. Fulton G. Gale, Principal of the Moscow high school.

## FORRESTER'S HOLD BANQUET

(Continued from page one.)

service who is delivering a series of lectures to school of forestry students this week, was introduced as a classmate of Dean Miller's at the Yale school of forestry.

Kenneth Dean, a freshman who came to Idaho from New York to study forestry, described his travels and hardships in making the trip west. His monologue was replete with mirth making incidents of an eastern man making his way to the west.

Mr. L. F. Parsons, executive secretary of the university, in responding to a toast, told of the first interest in Idaho's most valuable timber asset, her white pine stands.

Mr. Parsons remembered how the valuable timber stands of white pine were lost to the government and gave an interesting account of the early history of the lumber industry in this state.

Toastmaster Watson introduced the next speaker, Mr. Ben E. Bush, state land commissioner as one of the most enthusiastic foresters in the state and an early advocate of forestry practices.

Dean I. C. Crawford of the college of engineering, gave some personal observations of forestry both from the humorous and serious side. He recalled that his first connections with the lumber industry dealt with the cutting of square sets or mine props for mines near his former home in Leadville, Colorado. Later he was connected with the forestry profession in Nova Scotia in the capacity of assisting his father felling trees in the winter for fire wood and spending all summer chopping it up for stove length. At this point, with a warning to the students that classes would meet as usual on Wed-

nesday, toastmaster Watson officially closed perhaps the most enjoyable and successful banquet ever held by the foresters.

## IDAHO HOOPSTERS TIE

(Continued from page one)

holds. The way is strewn with dope pots scattered in every direction. The Vandals started the season like a million dollars and piled up a neat string of victories over Northwest conference teams before a Coast conference game was played. Then the Oregon Aggies, making a successful tour of the Northwest, stepped in and took a game by a one-point margin. Idaho's first conference victory, not including one over the University of Montana, was furnished by the University of Washington Huskies. This indeed was an upset of the dope, as Idaho stepped into a hornet's nest at Walla Walla and was defeated by Whitman in the first game of her tour. Coast fans had everything all set for a nice Idaho cleaning when she met the Huskies, but the Vandals spurted in the last half of the game and won by a two-point margin.

Idaho's conference defeats were administered by the two leading teams in the conference, O. A. C. and the University of Oregon, each of whom chalked up a brace of victories. The Huskies invaded Idaho territory on their tour and was handed a lacing both by the Vandals and by Whitman. Both of these games were somewhat of an upset of the dope, as Whitman held only a halfway position in the Northwest conference.

Idaho finished the season strong, by winning two games from the Washington State College hoopsters.

## CASH PAID FOR FALSE TEETH

dental gold, platinum and discarded jewelry

## HOKE SMELTING & REFINING CO.

Ostego, Michigan

## EVERYBODY'S BANK



The First National belongs to every one who steps across its threshold. Uniform service and cheerful, willing helpfulness are its ideals. Come in, open an account, and see for yourself how enjoyable banking connections can be made.

THE FIRST NATIONAL BANK  
of Moscow

## VARSITY CAB

10c up the hill nad 10c down the hill; 20c any place in town.

PHONE 75

TRIPS OUR SPECIALTY  
DAY AND NIGHT SERVICE

WE HAVE EVERY-  
THING IN

# Quality Meats!

Fresh and Salted Fish

## INLAND MARKET

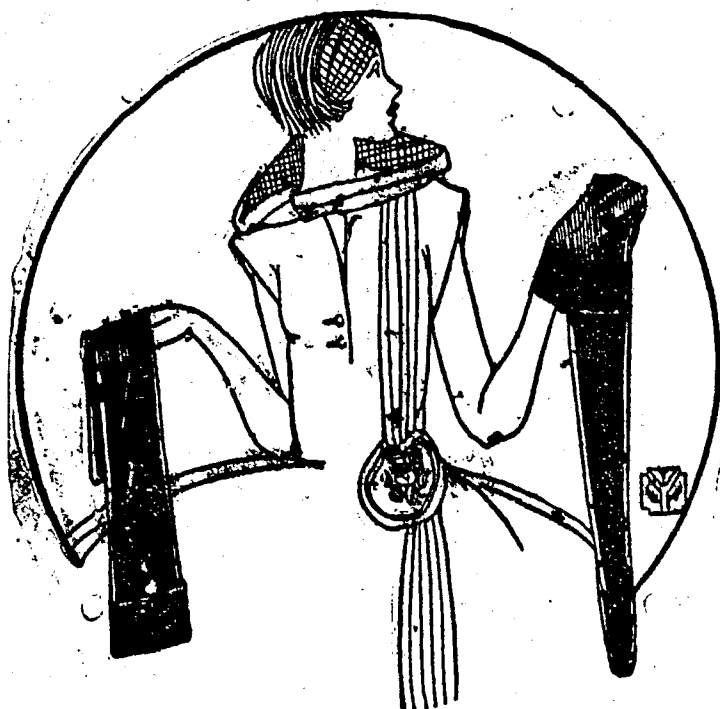
Phone 124

Anderson & Goodyear

THE  
BOBOLINKS  
ARE HERE!

# DAVIDS'

The Busiest Spot in the Palouse



## FEATURES OF BOBOLINK GUARANTEED SILK HOSIERY

Mercerized Welt  
Ravel Stop  
Absolute Guarantee  
Pure Silk  
Three Seamed Back  
Tight Fitting Ankle  
Double Soles  
Narrowed Foot  
High Spliced Heel

EVERY PAIR  
ABSOLUTELY  
GUARANTEED!

## ALL NEW COLORS HIGH LUSTROUS SILK

Black, White,  
Fog, Rugby Tan,  
Atmosphere  
Poudre Blue, Otter,  
Stone Grey, Beige,  
Airdale, Bunny,  
Burnt Russett,  
Racquet, Bombay,  
Tan Bark

Bobolink

# Bobolink Guaranteed Silk Hose

EVERY PAIR FULLY  
GUARANTEED

\$1.25

SEMI FASHIONED  
PURE SILK

## The Most Extraordinary Hosiery News In a Long, Long Time

Moscow women can now buy dependable silk hose that are absolutely guaranteed and the price is only \$1.25 per pair!

Not in years has such an opportunity been presented as in this introductory offering of Bobolink Guaranteed Pure Silk Hose. Look at the many desirable features enumerated above. Could anyone ask for more?

Bobolinks are particularly noted for their durability. But they have many other fine points which any of our hosiery sales people will be glad to explain. Come and see them tomorrow. You'll be enthusiastic, too. Bobolink stockings are beautiful!

## HARDWARE CO.

General Hardware

Phone 8L

COLLINS & ORLAND

## PHONE 19L

for appointments for your sittings  
for the Gem of the Mountains

## STERNERS STUDIO

521 S. Main

## Better Clothes for Less Money M. C. TAILORS

Cleaning and Pressing  
316-18 D Street Phone 595  
LEWISTON, IDAHO

# Cold Cream and Lotions

A reasonable time for the protection of complexion charm

## CARTER DRUG STORE

CHAS. CARTER, Prop.

## THE TIME IS HERE!

Near Easter Time is

## HOT CROSS BUN TIME

A rich spice and currant bun as no one else makes them  
25c per dozen

Try our Saturday specials on pastries of all kinds.

## ELECTRIC BAKERY

## WHAT COULD BE BETTER?

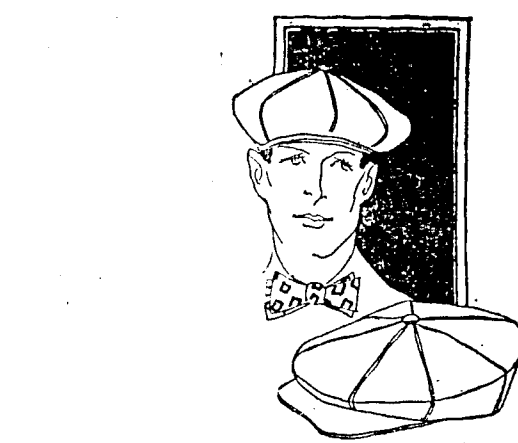
Than a huge juicy hamburger cooked in butter and between a toasted bun?

ALL FOR 15c

Don't forget our large and delicious MILK SHAKES. Two glasses in one.

ALL FOR 15c

## NAT DAIRY LUNCH COUNTER



# Caps For Spring

Full cut from the better quality materials, these Caps are sure to satisfy you in both appearance and service. A good range of patterns and colors await you.

## Oberg Bros. Co.

GENERAL MERCHANDISE

## FOOD SPECIALIST

May we supply your wants?

PHONE  
351

ROLLEFSON

PHONE  
351