



# The Argonaut

TUESDAY OFFICIAL PUBLICATION OF THE A. S. U. I. FRIDAY

Member Pacific Intercollegiate Press Association

Entered at the postoffice at Moscow, Idaho, as second class matter.  
Rates: Per year, \$2.00, except subscriptions outside of the United States, which are \$2.50. Subscription included in the Alumni dues \$3.00 per year.

Editor FLOYD W. LANSDON  
Acting Editor BURTON L. MOORE  
Business Manager CHARLES KINCAID

## The Argonaut

This is the first issue of The Argonaut for the school year of 1926-1927; in it the editors feel there should be an expression of policy by which the publication will be guided during its life of approximately 72 issues.

In each of the 72 issues it will be the endeavor of those responsible for publication to place before the students, in news and editorial form, life at Idaho, insofar as this is possible, on the printed page. The news columns will be devoted to an unbiased expression of happenings as they are reported. The editorial column will present general student problems, discussed both from the standpoint of the student and the administration of the university. This column will present the beliefs of the student body, as interpreted by the editors. Factional prejudices, if there be any, will have no place in The Argonaut. Political advances will not be made; on the other hand, it will be the endeavor of the editors to divorce this paper from politics as far as is possible.

There will be maintained at all times a column devoted to constructive comments of all who desire to voice their opinions. The hope is expressed here that it be put to its fullest use as questions arise on the campus. The editor reserves the right, however, to reject any comment which he judges to be in conflict with the policy which advocates progress in its fullest sense.

A fundamental point in this paper's policy is the belief of the editors that they are acting only as servants of the student body, and, as such, will function wholeheartedly with students to help the University of Idaho maintain its high standing among the universities of the nation.

### "Hello!"

On the University of Idaho campus we have but one pass word—"Hello!" There is a standing tradition on the Idaho campus for students always to greet fellow students and professors with a cherry "hello." From year to year this custom is growing and the student body brings the tradition to the front more with its hearty co-operation.

Over the western country, and on other campuses, the University of Idaho is noted for its democratic spirit among students and professors. Visitors coming on the campus are always greeted with a "hello" and are treated royally by the students. They go away with the impression that here there is only one big family of students gathered from the various sections of the state.

Carry out this old tradition by starting now to greet everyone with "hello."

### Late Registration Fine

A fine of \$1 per day will be charged all students who register late in the university. This rule was adopted by the university faculty at a meeting this spring and is called to the attention of the students by the administrative office. The fine goes into effect after the close of regular registration days.

### New Regulation "I" Caps to Appear On the Campus

One thousand new regulation "I" caps are to be sold this fall, during registration if it is possible to get the caps on the campus by then, by the Womens Athletic association, campus organization, it has been announced. The new caps are made from patented pattern and are on the

style of "gob" caps. The caps were adopted by the Associated Student body executive board late in the spring and will be permanent in style. The new caps will be entirely different from those which have been worn on the campus in the past, and all students are asked to purchase one of the new regulation caps before the opening of the football season here October 2. According to the present announcement issued, the caps will be sold for 95 cents.

The sale of the caps has been taken over by the W. A. A., and proceeds from the sale will be used to send a delegate from the Idaho organization to the national Athletic Conference of American College women to be held this year at Cornell college, New York.

### Infantry Instructor Here

Capt. B. M. Crenshaw of the infantry branch of the United States army is on the campus and has taken up his duties as assistant professor of military science and tactics. Capt. Crenshaw replaces Capt. B. B. Bain, who was transferred this spring to Georgia. During the World war Captain Crenshaw served in France with the Ninth Infantry, Second division and was wounded in action near Soissons, July 19, 1918. He served in France until 1920 and in 1921 was graduated from the infantry school at Fort Benning, Georgia. Before entering the war Captain Crenshaw attended the University of Texas.

## "Y" SECRETARY ON LOOKOUT FOR JOBS

### Will Handle Student Employment Bureau; Big Year Planned

Activities of the Idaho Y. M. C. A. will get under way immediately upon the arrival of the south Idaho student special today, according to Bob Davidson, newly appointed "Y" secretary who arrived on the campus the first part of September. Plans are made to make this year one of the biggest for the Y. M. C. A. on the Idaho campus, Mr Davidson said. Mr Davidson will also have charge of the university employment bureau for students.

Davidson was graduated last spring from Occidental college, Los Angeles, where he was active in religious affairs. He is also a two-year football letterman from his college. At Occidental he was president of the Y. M. C. A. and also acted as part time secretary from the "Y". Mr Davidson takes the place vacated by the resignation of George Oliver, who will take up graduate work at Columbia university this fall.

Mr Davidson has been working on arranging jobs for students since his arrival on the campus and stated that he will be ready for the students

by the time school is started. Many applications have already been received from students wanting work, he said, and several jobs have been lined up. Students desiring work will be kept showing the hours that they can work, he announced. Requests for students to work will also be kept on file.

## Everything Smart in New

# MILLINERY

also

## AUTUMN FROCKS

with distinctive style by Miss Truth MacArthur

# Torsen Millinery

# VAN'S

LUNCHES — TOBACCO — CONFECTIONS

Home of the Monster 2-in-1 Milk Shake

OPEN FROM 6 TO 12

Right on your way to town

Try Our Merchants' Monday Lunch

# WELCOME! STUDENTS!

To a shop that will not fail your demands for everything fine in candies and fountain dainties.

Punches and Party Supplies of highest quality

# ELSEA'S

Formerly Mitten's

## Welcome Students!

WE CATER TO THE COLLEGIATE TASTE

NOONDAY LUNCHES, FINE CANDIES AND

EXCELLENT FOUNTAIN SERVICE AWAIT YOU AT

## THE BON TON

# WE WELCOME YOU!

BOTH NEW AND OLD STUDENTS

# The Parisian

EXCLUSIVE WOMEN'S WEAR

Entirely remodeled and redecored and a complete stock of new merchandise.

We cater to the college women

To get anything out of yourself you must believe there is something in yourself.

### Library Rules

The university library will be open from 7:45 to 5 o'clock on week days. Monday, Tuesday, Wednesday, Thursday, and Friday evenings the library will be open from 7:00 o'clock to 9:30 o'clock.

Library books, excepting only reference and reserve books may be borrowed from the library for home use. They must first be properly signed for and they may usually be kept two weeks.

Reserve books, or books placed on the reserve shelf for use of the students, are to be used in the library but may be borrowed for home use during the time the library is closed. Reserve books so borrowed are due when the library is again opened and failure to return them promptly entails a fine of 25 cents, and an additional charge of five cents per hour till returned.

All library books are subject to recall at any time and failure to respond promptly to a request for the return of a book may result in an additional charge being made.

### Chinese and American RESTAURANT

We suggest you eat more Chinese dishes

Hot meat sandwich and coffee 25c

### LEE'S CAFE

# WELCOME!

We take this opportunity to extend a hearty welcome to all students of the university and wish you to make our store as much your home as you want. Come in and feel that you are meeting old friends.

We want you to know that we are doing every thing possible to give you a MEN'S SHOP that can take care of your clothing wants in the newest things at the time they are new. We have enlarged our stock with this object in view and can show you suits that carry an absolute guarantee and priced from \$30.00 to \$37.50 with two pairs of pants. These are in all the newest models and patterns. Ask to see them.

Our shirt stock contains all the very newest patterns that Wilson Brothers are making and are really a revelation at the price. New neckwear in both bow and for-in-hand in large assortments.

We have been fortunate in securing the DOBBS line of dress hats for young men and especially invite your attention to them.

# Cal Smith, Inc.

MOSCOW'S ONLY SHOP FOR MEN  
Bigger and Better

## COACHING STAFF BEST IN HISTORY

### New Coaching System To Make Appearance This Fall

Reorganization of the athletic department last spring gives the University of Idaho what is believed to be the best coaching staff the university has ever had. The appointment of Charles Erb, as director of athletics and head football coach was not made until late in the spring and he will make his first appearance with the grid squad when training opens this fall.

With the reorganization of the athletic department, David MacMillan, formerly basketball and baseball coach, was named director of physical education, this office being created this spring. Coach MacMillan has been connected with the university athletic department for several years and will continue as basketball mentor and will take over intramural sports.

Charles Erb, who was coached by the late Andy Smith and was an all-American star from the old California wonder teams, will use the "percentage" system as used by Smith. He will be assisted by Ray Neldig, who served as line coach under Mathews for several years, and George Philbrook, Erb will be assisted in coaching the backfield by MacMillan.

Besides Neldig, George Philbrook, who is assistant athletic director and track coach, will assist in coaching the line. Philbrook was formerly connected with the Multnomah Athletic club of Portland and came here this spring as track mentor. Philbrook was prominent in track at Whitman college in 1907 and the following year went to Notre Dame. In 1912 he was a member of the American Olympic team. He established seven track records that held for several years. While at Notre Dame Philbrook was also one of the outstanding linemen in the middle west.

Sylvester Klefner, former Idaho star, will have charge of the freshman squad this year. "Syb," as he is well known on the campus, was one of the hardest driving halfbacks on the Pacific coast as a member of the

Vandal eleven from 1922 to 1924. He is perhaps remembered best as the man who broke the Oregon flux by recovering a fumble in the 1924 contest. Klefner has been athletic director at Rupert high school this last year.

Another important addition has been made to the athletic department staff this fall. The Vandal team will have a regular trainer, Captain William Bryan, veteran of two wars and of many football seasons, will serve as trainer and in addition will have charge of the athletic department equipment. Captain Bryan was trainer of the California university team from 1920 to 1925.

## NEW GROUP HOUSES BEING COMPLETED

### Two New Sorority Houses Built During Summer Vacation

With all work complete except for last minute finishing details, the new home of Pi Beta Phi will be ready for occupancy at the opening of the college year. Work on the new Kappa Alpha Theta house is also progressing rapidly, and the building will be ready shortly after the opening of school.

The new Pi Beta Phi house is of the modern English type, designed to harmonize with the university architectural program. It will house comfortably thirty-five girls, with living-room, dining-room, guest-room, house-mother's suite on the first floor, study rooms on the second floor, and steam-heated sleeping quarters on the third floor. The basement is utilized for the cook's room, housekeeper's room, chapter-room, furnace, laundry and trunk room.

The home will be completely finished by the architects, Whitehouse and Price of Spokane, who have either designed or selected furniture in accord with the design of the house. Woodwork is of walnut throughout. The walls are given the extremely rough, vari-colored finish.

The former Kappa Alpha Theta house is now open for 20 boys—private home. Mrs. R. E. Carney.

Alloway and George of Spokane are the building contractors, while financial management has been in the hands of Mrs. Talbot Jennings and James Burnett.

The new Kappa Alpha Theta house is in the Italian Renaissance mode and is built of brick approximately 32 girls. This house brings a decidedly new note to the campus building

scheme. There are no buildings of its character existing here at the present. The old Pi Beta Phi house, which was moved to the corner of Deaken avenue and College street, will be occupied by the Omega Alpha local sorority this year. The house has been remodeled and completely renovated so that it will be in the best condition when school starts.

occupied by the Omega Alpha local sorority this year. The house has been remodeled and completely renovated so that it will be in the best condition when school starts.

OUR AIM:  
TO SERVE  
YOU WELL  
AND  
FAITHFULLY  
—ALWAYS

A NATION-WIDE  
INSTITUTION  
**J.C. Penney Co.**  
INC. DEPARTMENT STORES  
MOSCOW, IDAHO

WHERE  
SAVINGS  
ARE  
GREATEST  
THROUGHOUT  
THE YEAR

# Idaho Sons and Daughters WELCOME BACK TO MOSCOW

We are indeed glad of your return to the university. Many improvements during the summer months on and off the campus all indicate a bigger and better year for Idaho. We have tried to do our part by having crisp new fall stocks awaiting your approval on your return. A visit to our store at this time will be most helpful and profitable to you in selecting your wants necessities. Note the items below.

## Introducing New Dress Modes Popular Innovations of Fall and Winter

With the arrival of our Fall Dresses, the season is on! If you have been waiting to see our authentic styles, now is the time! Never did the fashions prove more satisfying in their loveliness.

### Satins Are Most Smart

The satin materials are ultra-modish—and they fall in long, graceful lines which give a most becoming air to a frock. Black, wine reds, navy, and cocoa are the colors. Priced,

At Every Price the Value  
Is Outstanding

**\$14.75**  
to  
**\$39.75**



### Exchanging Good Deeds

It is an old saying that one good deed deserves another. When you do us a good deed by visiting our Store, we strive to return the favor by making your visit as pleasant and as profitable as we can.

We know in doing this that you will think kindly of us and the service rendered and you will come back when in need of the goods we sell.

Honor, cooperation and service are principles which have governed this nationwide organization from the beginning. You have found these principles at work upon your visits to this Store.

*J.C. Penney Co.*

### Silk Lingerie Newest Styles

Step-Ins, Gowns, and Chemises, made of crepe de Chine, lace trimmed, in pale shades. For women and misses.

**\$2.98**

## We're Looking For YOU

The same old stand—but all slicked up  
New equipment and the kind of rapid-fire service  
you like

## The Oriole

# WELCOME!

Old students will tell you we excel in the preparation and serving of good things to eat and drink.

An excellent dining service specializing in HOME COOKING. Party orders filled promptly and expertly. Fancy and staple groceries. The most extensive line of fresh fruits and vegetables in town. Pastries, fancy cakes and cookies of all kinds.

All coupled with moderate prices make this the ideal place for the hungry college student.

## VARSITY GROCERY & CAFE

PHONE 94 (OF COURSE) PHONE 94

# WELCOME TO IDAHO

We are headquarters for Whitman's Chocolates  
A complete assortment awaits your choice

## CORNER DRUG STORE

## STUDENT HEADQUARTERS FOR SPORT

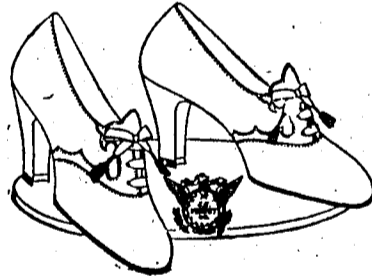
NEWS AND ALL THE LATEST DOPE

Candies — Tobacco — Magazines

Meet the Gang  
at

*Gerry's*  
MOSCOW, IDA

## A Modish Oxford Tie For Women



An unusually attractive Oxford tie that will appeal to the woman who wants smart, new footwear of real value. In patent with dull calf trimming; covered Spanish heel. Low priced.

**\$5.90**

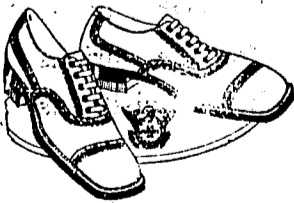
## Full-Fashioned Silk Hose

Reinforced Heel and Toe—  
Unequaled for Long Wear

The all-satisfactory silk Hose! Woven of ten-ply silk thread to fit the ankle snugly. You may buy this in any of the many desired shades. A hose which really wears! Try them—and you'll always buy them! Priced, the pair, for Women and Misses

**\$1.49**

## Men's Oxfords For Fall



Of durable tan calf, excellent in quality and workmanship; fancy stitched; medium sole; Goodyear welt; rubber heels. All in all—an unusually good value at a low price—

**\$5.90**

## Lumberjack Men's Sweaters

Bloused model; Jacquard patterns; worsted bottom—

**\$4.98 to \$5.90**

## "Marathon" Hats for Fall



Here's "The Century," SOME hat, even for a Marathon. Harmonizing silk bands. In newest Fall colors—Pearl, Sand, Willow and Steel. An all-round fine hat at—

**\$3.98**

## Overcoat Value!

Value Here Includes Style, Quality, Good  
Tailoring



**\$24.75**

Three-button double-breasted Box Coats in overplaids and heather mixtures; also Tubular Coats with slightly broader shoulders and straight lines. In Dark Browns, Greys, Fancies and Solid Blues. Warmth, style, good tailoring and supreme values.

Other Overcoats  
**\$19.75 to \$34.50**

## Setting the Pace

In New Fall Suits at  
Our Feature Price



**\$24.75**

Suits for Young Men that lead, because of Style, Quality of Fabrics, Good Tailoring and Moderate Price.

Unfinished Worsteds, Serges and Casimeres—fancy overplaids, group stripes, diamond weaves and pineapple shadow effects.

Other Suits, **\$19.75 to \$34.75**

## IDAHO GETS THREE MORE NEW MEN ON INSTRUCTION STAFF

G. L. A. Ruehle, Herbert E. Lattig and Dr. Ralph D. Russell Appointed

## CHANGES IN FACULTY

### Instructorships Created in English, Business and Forestry

Appointments of three new faculty members, to fill positions made vacant by summer registrations, are made by President A. E. Upham on behalf of the board of regents. These appointments were made since the announcement in the summer Argonaut.

G. L. A. Ruehle is appointed professor of bacteriology, succeeding Dr. W. M. Gibbs, who is taking up the study of medicine this fall at Northwestern university. Professor Ruehle was graduated from the University of Washington in 1908, taking the bachelor's degree in pharmacy; in 1920 he received his master's degree from the same institution, having majored in chemistry with a minor in bacteriology with the exception of the thesis, which has been started. This work has been done at Michigan State college, with some study at Cornell. Since 1911 he has been engaged in institutional teaching or research and has written or helped write 12 scientific papers or bulletins.

Herbert E. Lattig, who received the bachelor's degree in agriculture from the University of Idaho in 1924, has been appointed associate professor of agricultural education, succeeding Prof. F. E. Armstrong, who has taken a similar position at the University of Hawaii, at Honolulu. Professor Lattig's home is in Payette. He was for several years assistant manager of a large ranch in Alberta, Canada. After service in the World War he taught Smith-Hughes agriculture in Moscow high school for two years and for the last two years in Burley high school. At the university he will train Smith-Hughes agricultural teachers and will be principal of the short course known as the school of practical agriculture.

Dr. Ralph D. Russell becomes professor of secondary education, succeeding Dr. C. C. Crawford, who has taken a position at the University of Southern California. Professor Russell is a graduate of Union university, Tennessee, and has pursued graduate study at Peabody College for Teachers, Tennessee, and at the University of Iowa, from which last-named institution he received the doctor's degree in 1923. He has had considerable experience in public school work, as a high school teacher and has taught in Union university and in Louisiana college.

Few Changes  
Changes in the university faculty this year are few compared to other years. But three additional positions have been created, these being instructorships in English, business administration and forestry.

Other appointments to the faculty which have been announced previously are:

C. E. Johnston, associate professor of business administration.  
Russell C. Engberg, associate professor of economics.

Frank L. Mache, associate professor of law.  
H. Carter Davidson, assistant professor of English and public speaking.

Almon J. White, instructor in zoology.  
Ellen Relerson, instructor in business administration.

Jennie F. W. Johnson, instructor in voice.  
Nevora Bergman, instructor in piano.

Oswald C. R. Stageberg, instructor in architecture.  
E. G. Welschuegel, instructor in forestry.

Danzel C. Cline, instructor in economics.  
Paul J. Kramer, graduate fellow in botany.

Vivian Lemon, graduate fellow in business administration.  
Ruth Schwartz, graduate fellow in zoology.

Vivian Whittier, graduate fellow in zoology.  
Ora I. Landis, graduate fellow in English.

Marjory Eastman, state clothing specialist, Extension division.

Returning to the faculty this year are Gustaf W. Hammar as assistant professor of physics; Lillian J. Wirt, assistant professor of physical education; C. C. Prouty, assistant bacteriologist; Louise B. Hammar, instructor in modern languages, and Florence Richardson, assistant professor of physical education.

## Dean Crawford to Attend War College

Dean Ivan C. Crawford of the school of engineering will leave immediately after registration this fall for Washington D. C. where he will attend a brief course at the army war college. Dean Crawford is one of the seven reserved officers in the United States selected to attend this college. Dean Crawford will return in October. Studies to be taken up there will be devoted to a study of duties and functions of the army general staff.

During the war Dean Crawford served overseas as a major in the engineer corps and immediately after the armistice was assigned to the war damages section of the peace commission and was sent to Belgium where he was placed in charge of the valuation of damage done to buildings of the country. In the officers reserve Dean Crawford holds the rank of lieutenant-colonel in the corps of engineers.

## NEW SET OF RULES GOVERNS PLEDGING

Fraternities Will Be Under Bond to Obey Rushing Restrictions

Pledging of new men by fraternities on the University of Idaho campus will be done this year under certain specific rules, which were adopted by the inter-fraternity council last spring and approved by the men's houses on the campus.

Following are the rules adopted:

1. Each house shall submit a signed check for \$50 to be held as a bond in case a fine is levied. In such a case, the house shall pay the fine, and the inter-fraternity council shall keep the \$50 bond in reserve. These bonds shall be placed with the bursar for safe keeping.

2. No man shall be pledged who is not registered in the university.
3. Until three days before fall registration no house shall start its dining table, have smokers, dances or in any way, as a group, entertain rushees.

4. Pledge pins shall be worn where visible.
5. No fraternity shall attempt to restrain any rushee from visiting another house; nor shall it give erroneous information as to the whereabouts of such rushees.

6. Each fraternity shall in case a pledge is broken, notify the president of the inter-fraternity council within ten days; the president in turn shall notify all groups. No man shall be repledged for a period of 90 days after a pledge is broken.

7. Any group found guilty of lifting a pledge pin of another group shall forfeit the right to initiate the party concerned.

8. The inter-fraternity council shall act as a court and each group

shall have one vote. Two thirds majority shall decide the case, the vote being taken by secret ballot. The court shall consist of: president, to act as judge; senior members to act as jury. In case the house of the president is involved, the vice president shall take the chair, and so on down the line until impartial judge is had.

## WEDNESDAY AND THURSDAY "FRESHMAN DAYS"

(Continued from page 1)

Wednesday	
9:00 A. M.	Uniform English test, Assignment of Rooms
Names Room	
A to E	Science Hall 110
F to K	Science Hall 23
L to N	Administration 311
O to R	Engineering 208
S	Administration 316
T, U, V	Administration 305
W, X, Y, Z	Administration 201
(Overflow)	Administration 205
Bring fountain pens filled or pen and ink.	
1:30 p. m.	Freshman assembly Auditorium

3:00 p. m.	Conferences:	
Agriculture	Morrill Hall 35	
Home economics	Administration 311	
4:00 p. m.		
Letters and Science	Auditorium	
Mines	Geology 1	
8:00 p. m.	Reception for new students Gym	
Thursday		
8:00 a. m.	Mental tests	
Assignment of Rooms		
Names Room Time		
A to E	Science Hall 23	8:00 a. m.
F to K	Science Hall 110	8:00 a. m.
L to R	Science Hall 23	10:00 a. m.
S to Z	Science Hall 110	10:00 a. m.
2:00 p. m.	Conferences:	
Engineering	Engineering 208	
Pre-medical and Pre-nursing	Ad. 201	
3:00 p. m.		
Business	Auditorium	
Music	Ad. 307	
Architecture	Ad. 206	
4:00 p. m.		
Pre-legal	Ad. 206	
Education	Ad. 311	
Forestry	Morrill Hall 35	

WELCOME, STUDENTS

You want your hair cut RIGHT

That's the way we do it.

IDAHO BARBER SHOP

Opposite Moscow Hotel

# 1890 1926

## CREIGHTON'S

THE HOME OF GOOD CLOTHES FOR MEN AND WOMEN

Ever since the university first opened its doors this store has been catering to the needs of the students.

This year we are in a position to take care of the students' needs even better than ever before

WE WELCOME ALL STUDENTS TO IDAHO

## WELCOME! STUDENTS OF IDAHO

*Moscow's Quality Shop*

GREET'S YOU!

Let us help you plan a "SCHOOL WARDROBE" that will pass all entrance exams successfully.

Entrance exams in academic subjects may loom important on the horizon of the incoming freshman—but her first and most severe exam is her appearance.

It is by this that she is largely judged—those first days when upper classmen are looking for promising "material" for the various activities of the school year. So if she is wise she will visit this shop in her quest for clothes that will be "recognized."

Scores of beautiful dresses for school, street, afternoon and dinner and evening wear—in our collection that will go into wardrobes destined to succeed at college. Moderately priced at \$18.75 and up.

# The Fashion Shop

(Incorporated)

The recognized style center of the Inland Empire

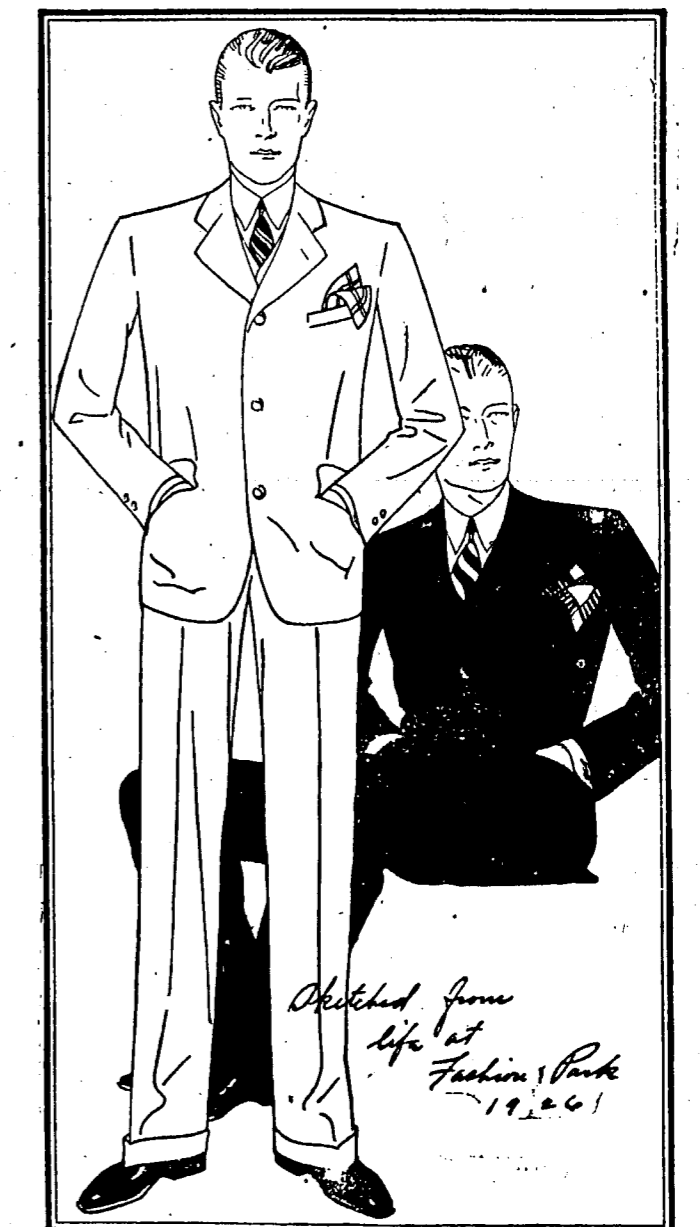
## IDAHO WOMEN



## Welcome!

**B**USINESS is not all a series of purchases and sales; into it goes sincerity; from it grows friendliness. It is with these feelings that we welcome you back to Idaho.

## DAVIDS'



## IDAHO MEN