

# The Idaho Argonaut

VOLUME XXIX

UNIVERSITY OF IDAHO, MOSCOW, TUESDAY, APRIL 24, 1935

Number 57

## ASU CONSTITUTION AMENDMENTS WILL BE READ THURSDAY

### Four Proposed Changes to Be Voted Upon at General Election

## SPECIAL ASSEMBLY

### W. A. A. and Track Awards, Rifle and Editorships Are Included

Four proposed amendments to the ASU constitution will be read before a special assembly of the student body Thursday afternoon at 4 o'clock in the auditorium. It was announced this morning by Frank W. Cline, president of the ASU. These amendments have to deal with women's athletic awards, rifle, track awards and naming of associate editors of the three student publications.

Reading of these proposed amendments is required by the constitution, so that students may become acquainted with the provisions of such proposed changes. Mr. Cline said. Following the reading, all amendments will be published in The Argonaut, appearing in Friday's issue.

### Award "Y" Blanket

The amendment submitted by the Women's Athletic association has to do with awarding an "Y" blanket to all girls who make a total of 1600 points in athletics. The present provision is to award an "Y" sweater to girls making 800 points. Under the proposed amendment, it would mean an incentive for girls to work during the junior and senior years, for at the present time most girls win their sweaters at the end of two years. A few new sports would be added, while the principal of the system is to continue working in sports specified now.

An amendment is to be voted upon which would place the rifle team under a department similar to dramatics, the Pep band, etc. This amendment does not make rifle a minor sport but provided suitable recognition for members of the team for their work.

The student board at Washington State college recently passed on a proposal similar to the one being put up here showing that rifle is being recognized on other campuses. At W. S. C. a sweater is awarded, carrying the insignia of the infantry which is crossed rifles with a small "W" on the insignia.

Change Track Awards  
The third amendment is in regard to varsity track awards. It is proposed to change the present system of giving awards for this sport. Under the provisions of the amendment it will be somewhat more difficult for athletes to win letters in track.

An amendment will be submitted to the executive board tonight proposing to change the present system of naming.

(Continued on Page 2)

## FOUR MORE SHORT PLAYS END SEASON

### One-act Production Series Scheduled for May 3 and 4, Says Prof. Cushman

Four one-act plays, probably the last series to be given this year, will be presented by the play production classes on Thursday and Friday evenings of next week, May 3 and 4, according to announcement by Prof. John H. Cushman, director of dramatics.

"The Blue Serge Suit," "Grandma Pulls the Strings," "The Kelly Kid," and "Postmortems" are the titles of the plays selected for the two presentations in the auditorium. Although a majority of the players taking part are in the beginning play production classes, some are taking advanced work.

Mrs. Harry Brenn and Miss Marie Johnson will coach the plays, the following casts having been announced this week:

"Grandma Pulls the Strings," Pauline Brown, Edith Miller, Jean Rawlins, Beulah Bangs, Louise Lamelle and Dan McGrath.

"Postmortems," Dean Newhouse, Estelle Pickrel, Arthur Peavey and Robert S. Clair.

"The Blue Serge Suit," Arthur Chapman, Alfred Buckingham, Hazel Simonds and Robert Page.

"The Kelly Kid," Thelma Smith, Jean Collette, Leona Delderich, Louise McKinney, Harry Robb, Jack Sheehan and Patrick Walker.

## SPOKANE BANKER TALKS TO CLASSES

D. L. Davis, Managing Director of Federal Reserve Branch Bank, Addresses Business School Group

D. L. Davis, managing director of the Spokane branch of the Federal Reserve bank, addressed classes in business ethics and money and banking in the school of business administration Tuesday morning at 11 o'clock. The two classes met together to hear the Spokane financial expert.

"Relation of the Federal Reserve System to Business and Agriculture" was the topic of his talk and he proceeded to tie up this phase of his with the Pacific northwest.

He was a luncheon guest of the business school staff Tuesday noon at the Blue Bucket inn.

## AIR PROBLEMS OF DEANS OF WOMEN

### Mrs. Blomquist Returns from Meeting of Deans of Women; Important Resolutions Considered

Discussion of the problems confronting deans and of the influence deans have on the campus were the high lights of the sixth biennial Western Conference of Deans of Women, held April 18 to 21 at Seattle, according to Mrs. Louise Blomquist, assistant dean of women, who returned from the convention the last week.

An interesting paper on "The past, present and future of Housemothers" was presented by a housemother at Oregon State college. Mrs. Bernia "Women's Civic Responsibilities."

During their stay in Seattle, the functions including a dinner given by the Washington Alumni association, Deans from California, Colorado, Wyoming, Oregon, Washington, British Columbia and Idaho attended the convention.

## AAUW PURPOSES TOLD AT RECEPTION

### Senior Women Guests of Moscow Branch Saturday at Hays Hall

Senior women of the University of Idaho were encouraged to join the American Association of University Women in a talk by Miss Katherine Jensen, president of the Moscow branch, at the reception given them Saturday afternoon at Hays hall. The purpose of the talk, advantages, opportunities and the work already accomplished by the association were outlined by Miss Jensen.

"The Waltzing Doll," by Clarice Anderson and Dorothy Taylor. "Fugate," a dance by Lillian Woodworth; "The Village Dressmaker," a reading by Miriam Howerton and three solos by Miss Jennie F. W. Johnson were the program given.

Presidents of the organization were in the receiving line.

Mrs. C. N. Little and Mrs. J. J. Gill presided at the tea table after the program. Green tapers and huge red tulips were used for decorations.

## SEVENTY-FIVE AT AD CLUB BANQUET

### Raymond Kelley, Spokane, Principal Speaker at Organization Meeting

Raymond P. Kelley, vice-president of the Pacific Coast Advertising clubs, 12th district of the international ad club organization, pointed out the advantages of membership in that organization and the advantages of affiliation of the local university and town ad club would reap the members at an organization banquet-meeting at the Moscow hotel Friday evening.

Seventy-five students of the business school of the university and businessmen of the city interested in advertising were present and heard Mr. Kelley, a member of a Spokane advertising house. A majority of those present signed for membership in the new association here.

It was brought out both by Mr. Kelley and Hugh Felts, temporary president, that merchants would find the association ready to offer co-operation in the preparation of local ad copy, in maintaining a "better business" bureau to certify to financial and advertising schemes broached by itinerant salesmen or outside firms, and in access to all material of the international organization.

An entertainment was provided. It included vocal selections by Chris Morley, a monologue by William Gale, banjo duets by Richard Hollister and Lambert Cannon, clog dance by Charles Gregory and a series of piano trios on three pianos by William Lambdin, Clair Gale and Howell Hall. Dean H. C. Dale of the business school and Don Phipps of the Pullman club spoke briefly. About 75 were present.

## ERVAL JOHNSON IS T. M. A. PRESIDENT

### Schumann Is New Vice President of Town Men's Group and Snook Secretary

Erval Johnson was elected president of Tau Men Aleph, town men's organization, at a meeting held at the U Hut Monday evening. Other officers chosen were Gilbert Schumann, vice president; Wayne Snook, secretary; Golden Ryan, treasurer; Wayne McCoy, athletic manager; Jess Thomason, sergeant at arms, and Robert Lansberry, reporter.

Murtha Cline, junior man on the executive board, is the retiring president. Incorporation of the group under Idaho laws, started not long ago, has been practically finished, declare members of the group.

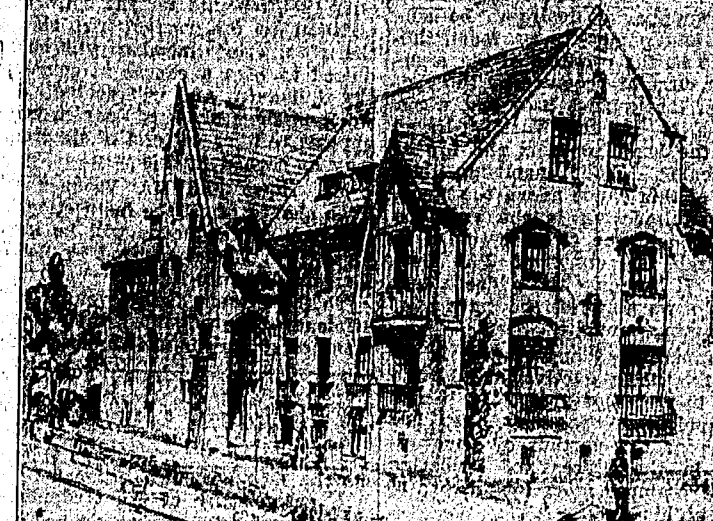
## LEEPER VISITS HERE

R. D. Leeper and family of Lewiston visited the campus last week. Mr. Leeper is president of the Idaho Memorial Building association, and while on the campus looked over the progress made on the new gym.

## RAEDER ON TRIP

M. J. Raeder, assistant pathologist of the Idaho experiment station, is on a trip through southern California, Arizona, New Mexico and a small part of old Mexico studying the stripe rust disease of wheat. He will be gone about a month.

## VIEW OF THE NEW A. T. O. HOME



ARCHITECT'S DRAWING of the way the new \$50,000 Alpha Tau Omega fraternity home will look when completed. The present plans call for construction of the building at the corner of University and Deakin avenues, immediately south of the Blue Bucket inn. At total of \$50,000 will be spent on the house and furnishings while \$15,000 will be spent for the property on which to build.

Construction work on the building will be started as soon as possible with the house to be ready to be occupied by the opening of school this fall. The contract has been let to C. M. Conley, Spokane contractor who is building the memorial gym.

## DISTRICT MEETS ARE INCREASED TO FOUR

### Eliminations to be Held in Sandpoint, Kamiah, Caldwell and Pocatello

District meets to determine entrants in the state high school interscholastic track meet, at Moscow, are to be held at Pocatello and Caldwell in the southern part of the state and Sandpoint and Kamiah in the north. The Caldwell, Pocatello and Sandpoint meets are scheduled for May 5 and the one at Kamiah will be run off April 28. First and second men in each event from each district will be qualified to enter the state meet here May 12. The university track will be in good shape by that time. Men are working on the straightaway daily preparing for the Idaho-W. S. C. dual meet May 11, and the jumping pit is now in good condition.

## UNIQUE ASSEMBLY ON ENGINEERS' DAY

### Plan Program for Appearance Before Student Body May 4, is Announced

Slide rules and logarithmic tables will be laid aside May 2 by the engineering students who will put on a program of music and feature stunts for the entertainment of the student body. It plans made by Gus Bjork, for Engineers' Day are successful. The program would be carried on much as the recent popular junior assembly was, he declares.

Eighty visiting engineers from Spokane will be here on May 4 for Engineers' Day, said Mr. Bjork, president of the Associated Engineers, who was in Spokane recently on business.

The Spokane delegation and a group from Washington State college will inspect the campus in the morning and view the different exhibits. At noon they will be entertained at a luncheon at which about 800 will be present, one of the largest luncheons ever given at Idaho. The place has not been decided upon.

In the evening the visiting group accompanied by a large number of engineering students, will go to Lewiston to attend a banquet given for them at the Lewis and Clark hotel.

## CALL OUT FROSH BASEBALL MEN

### Meet Wednesday at Gym to Get Equipment; Several Good Ball-players Will Be Out

Candidates for the freshman baseball team are to report to Coach Fox at the gymnasium Wednesday afternoon at 4 o'clock for their first practice of the 1935 season. For the first week all frosh will be required to use their own equipment, but as the men show ability they will be given uniforms and gloves of the school. Regular practices will be held with the varsity nine. For the time being Coach Fox will handle the rock diamond dusters but at the close of the spring football season Coach Beam of the football staff will take them over.

Several games have been scheduled for the yearling nine.

## PHI LAMBDA THETA INITIATES EIGHT

### Idaho Women's Education Honorary Holds Ceremony Sunday at Home of Mrs. E. F. Mason

Phi Lambda Theta, women's honorary education fraternity, initiated eight persons Sunday evening, at the home of Mrs. E. F. Mason, 210 Lilly street.

Ada Gregory, Lora Allison, Laura King, Grace Dawson, Barbara Rugg, Goldie Smith, Mrs. E. W. Smith and Margaret Scholer were the initiates.

Mrs. R. D. Russell assisted Ina McMurray, president, in the ceremony.

Several alumnae of the Idaho chapter were present.

## POSITIONS SECURED FOR FIFTY SENIORS FOR COMING YEAR

### Graduating Students and New Alumni Placed by University Bureau

### MOST ARE IN IDAHO

### Several Advancements for Idaho Graduates are Also Given, Records Show

More than 60 University of Idaho students and graduates have been placed for positions in northwestern schools for the coming year with a majority in Idaho, records at the office of Miss Bernice McCoy of the placement bureau showed Monday.

Placing of the students will continue at a high peak for the remainder of the school year, reaching a climax in the middle of June. There will be slump during the summer months, but placements will be made until late next fall. Not only is the number of placements thus far larger than for the corresponding period last year, but the average salary rates are higher averaging about \$1350.

### All Will Be Placed

Reason to believe that all students who are placeable will receive their appointments during this spring of the summer, was given by Miss McCoy. The placement service is continuous and of the number of placements for the coming year several promotions are included.

Of the placements listed to date, 23 are from the class of 1928, and 11 are from the classes of the past two years, most of these being promotions. There are two members each of the class of 1924 and 1925 and six sophomores and juniors have been placed in grade work.

### Placements Given

Following are some of the placements:

John Hill, '28, principal of schools, Hayden Lake, Idaho.

Beulah Brown, '28, English, public speaking and dramatics at Kellogg high school, Idaho.

Mildred Williams, '28, English and

(Continued on page four)

## AILSHIE DEFEATS BEVENS IN TENNIS

### Wins Right to Enter Semi-finals in Men's Open Tennis Tourney

Defeating H. Bevens 6-4, 6-1, Saturday afternoon, Robert Ailshie completed the first match of the second round of the men's open tennis tournament now being conducted by Kenneth Marchess, Idaho tennis manager and won the right to compete in the semi-finals. Other matches to determine the eight leading contestants have not yet been played. The championship matches will probably be played next week, depending on the weather.

Four more men were eliminated from the men's singles tennis tournament over the week end, there now being but eight who have qualified to enter the semi-finals. Four of the matches to determine the leaders have not been played up to Monday night.

Hayden Carney defeated D. Hutchinson 6-2, 6-0. Nathan Eablow won from G. Beckstrom, 6-3, 4-6. Robert Ailshie defeated G. Havens 6-4, 6-1 and Krueger eliminated C. Deatherage 6-3, 6-4.

The championship matches will probably be played next week, depending on the weather.

## SENIOR PICNIC UP AT NEXT MEETING

### Seniors to Discuss Plans for Affairs at Class Gathering Thursday in 311, Administration Building

Discussion of plans for the "senior picnic" will be held at a meeting of the senior class Thursday evening at 7:30 o'clock in room 311, Administration building.

The picnic idea is new at Idaho and was adopted last year after the accident to Irene Costello on the night of the senior snack. Previous to last year, the seniors by tradition tried to prevent the seniors from going on the annual snack. Miss Costello fell from a moving truck and sustained injuries that kept her in the hospital for the greater part of nine months.

"Any interference with seniors leaving on the picnic will result in immediate expulsion this year," states a ruling made by the academic council.

A number of surprise features will be brought up at the meeting, said Gus Bjork, president, and all seniors are requested to be present.

### CLASS SERVES LUNCHEON

The junior class in home economics served luncheon Monday at 2 o'clock to Mrs. Otter, Marion Dick, Ruth Hensberg, Marjorie Drager, and Ruby Lou Dunlap. The color scheme of red and white was carried out in both decorations and food. The centerpiece was of red tulips. This class has begun meal work. They have completed the study of breakfasts and are now studying luncheons.

## TEN WOMEN GO IN FOR GOLFING

### Receive Instruction from Miss Wirt, Open to All Women Interested in Game

Ten university women are taking advantage of golf instruction this spring under the supervision of Miss Lillian J. Wirt, in charge of physical education for women. Weather permitting, the class meets Tuesday and Thursday mornings.

A number of women started taking lessons last fall, but the series was cut short by bad weather. All those who did not receive the final lessons last fall may take instruction on Thursdays either at 10 or 1 o'clock.

Girls taking instruction this spring are: Elva Reid, Ruby Williams, Miss Wirt, Opal Garratt, Ruth Otter, Beatrice Hardin, Virginia Neale, Helen Jensen, Constance McLeod and Dorothy Hall.

## IDAHO GOVERNOR VISITING CAMPUS

### Governor Baldrige Arrives Here Monday to Inspect University

Never having seen the university during mid-term activity, Governor H. C. Baldrige was here Monday to go over the institution during its normal work period. He arrived shortly before 11 o'clock and expects to remain until Tuesday noon, returning to Boise by way of Lewiston. Accompanying him are Mrs. Baldrige and George Lewis, state budget officer.

Governor Baldrige spent Saturday evening in Lewiston and Sunday visited the state insane asylum at Orofino, the first time he had ever seen that institution. He is on a tour of inspection of northern Idaho state institutions.

Monday afternoon the governor spent at the university and probably will attend meetings of at least one and possibly both service clubs tonight. He is staying at the Moscow hotel.

## MELTING IRON IN WATER, A FEATURE

### Will be One of Electrical Engineering Exhibits at Engineers' Day, May 4

Melting iron in water is one of the simple creations of modern electrical engineering that will be shown as part of the electrical exhibits on Engineers' day, here on May 4.

It is not an uncommon sight to see the village blacksmith cool off a red-hot bar of iron in a pall of water, but how many have seen the modern day blacksmith who puts the iron in the pall of water to heat it to even a point of melting. This process is known as "pall welding."

The process seems simple. It consists of placing a piece of iron or other metal in a pall of water with a pair of tongs and the iron is heated at once. As soon as the iron touches the water a ball of fire seems to encircle the iron and it soon heats to a white-hot condition under the surface of the water. The action is rapid and unless care is used the iron will melt and fall to the bottom of the pall.

After the iron has been welded or hammered into shape on the anvil, it is again placed in the same bucket of water and this time it is cooled off in a cloud of steam. This may sound impossible but the electrical engineering department is going to make it a reality in the coming exhibition.

There will be another type of welding machine in operation, to be in the form of an electric spot welding machine. Pieces to be welded are clamped in place and then without external heat or flame, the two pieces will be welded together in a firm joint in very short time through electrical processes.

## BLODGETT HEADS HONORARY GROUP

### Elected President of Alpha Zeta, Honorary Agricultural Fraternity; Joint Initiation

Earl Blodgett, Boise, was elected president of Alpha Zeta, national honorary agricultural fraternity, for the coming year at a meeting of the group held last week at Merrill hall. Other officers are, Charles Spenser, vice president; Harry Spence, secretary; Bruce Sifton, treasurer, and Harold Waters, historian. Eugene Whitman is retiring president.

Initiation ceremonies in conjunction with the chapter at Pullman, followed by a banquet, will be held at the next meeting. No date has been set.

### TO HEAR AMENDMENT

Several proposed amendments to the ASU constitution will be presented to the executive board at its regular weekly meeting this evening in room 104, Administration building. A number of other projects are to come before the board tonight, according to Frank W. Cline, president of the ASU.

### BOARD GOES TO DINNER

Members of the executive board of the ASU will be guests of Hays hall at dinner this evening. It was announced by Frank Cline, president, at the hall shortly before 6 o'clock.

## TWO HUNDRED WILL BE HERE TOMORROW AT MUSIC CONTEST

### High School Contestants Assigned to Group Houses By Lot

### TWO DAY PROGRAM

### Preliminary Contests Open To Students and Public, Kratt Says

Final arrangements for the second annual high school music contest to be held here next Thursday, Friday and Saturday were made Saturday with the distribution among the various group houses of the 215 contestants from all parts of the state who will arrive here Wednesday. Representatives from each group house met Saturday and draw by lot for the students they will entertain during the week.

Each sorority house will entertain six girls while the men's groups will each house four men. Forman and Hays hall together will accommodate 50 of the contestants.

Guests at Rectal Wednesday evening the entrants in the music contest will be given complimentary tickets to the concert of Mrs. Winifred Willson, Quilpan, lyric soprano, who is giving a benefit concert under the auspices of Sigma Alpha Iota, in the auditorium on that night.

All preliminary contests are open to the public. The concert given at 8:15 in the auditorium will have a special admission charged to defray expenses of the contest.

The contest begins with a general assembly Thursday morning at 8 o'clock in the auditorium. At 8:00 o'clock in the auditorium, the bands will be judged, in the auditorium, and violin and cello will be judged at the Kappa Kappa Gamma house. Girls' glee club tryouts will be held in the auditorium at 10 o'clock and boys' glee club tryouts will be at Phi Gamma Delta house.

Thursday afternoon at 2 o'clock orchestra tryouts will be in the auditorium and girls' voice preliminaries at the Kappa Alpha Theta house. Friday piano preliminaries will be at the auditorium at 9 o'clock and wind instruments will be judged in the U-Hut. Piano finals will be at 2 o'clock.

Sigma Alpha Iota will hold a reception for the visitors at Hays hall at 4 o'clock Thursday and a joint musical program by all the musical organizations on the campus will be given at 8:15 in the auditorium.

Saturday morning at 9 o'clock a round table discussion of all visiting teachers which will be held in the auditorium will conclude the contest.

### Housing Assignments

Following is the list of contestants with the houses at which they will

(Continued on page four)

## MAY DAY PAGEANT DANCE PANTOMIME

### Women's Physical Education Department in Charge Campus Day

Dance pantomime based on the Greek myth of Hades stealing Persephone from the world of sunshine, will feature the May day pageant on May 16, says Miss Lillian J. Wirt, head of physical education for women who is directing the pageant.

The unusual pantomime includes the stealing of Persephone from her mother Demeter, and her return from the underworld to be crowned as queen of spring. Special costumes for this are based on the authentic Greek costumes. Spring colors of varied pastel shades and the cold white colors of winter will be used in the pageant. The ceremonial music of Persephone's return will be played by an orchestra from the music department.

Although the part of Persephone will be taken by the chosen May queen, the other main characters and dancers will be picked from the beginning and advanced classes in natural dancing.

The day's ceremonies will be closed by the winding of the Maypole. Two poles will be wound this year and groups of dancers are now being trained in the sophomore and freshman gym classes.

Mortar Board has charge of the senior girls' coronations and Silver Lance has charge of properties used for the pageant.

## EIGHT MEN PLEDGED TO ALPHA KAPPA PSI

### Business Honorary Takes New Men Saturday; Initiation to Be Held About May 1

Eight students in the school of business administration were pledged to Alpha Kappa Psi, national professional business fraternity, Saturday, following a special meeting of the organization held Thursday.

Those pledged are Frank McMillin, Willard Lambdin, John Glass, Walter Slaughter, Lard Jenkins, Fred Leidlau, Jere Long and Raymond Adcraft. Selections were based on scholarship, general standing in the business school and professional attitude. Initiation ceremonies followed by a banquet will be held for the newly initiated men about May 1, said LeRoy Long, president of the group.



# THE IDAHO ARGONAUT

Official publication of the Associated Student Body, issued every Tuesday and Friday of the school year.

Member Pacific Intercollegiate Press Association  
The Pacific Intercollegiate Press is exclusively entitled to use for publication all news dispatches credited to it or not otherwise credited in this newspaper, and also all local news published therein.

Entered at the Postoffice at Moscow, Idaho, as second class matter.  
Rates: Per year \$2.00. Outside of United States, per year, \$2.50. Subscription included on alumni dues of \$3.00 per year.

News rooms, campus, Room 104, Administration building, Monday and Thursday nights, after 7 o'clock, Star-Mirror office, phone 6551. Editor's house, telephone 6941; manager's house, telephone, 6561.

BURTON L. MOORE, Editor HARTLEY KESTER, Mgr.

ARGONAUT BOARD  
Frank W. Clink Burton L. Moore Virginia Grant Elmer Berglund

Cecil Hagen Managing Editor  
Arthur Peavey Circulation Mgr.  
Helen Kerr Copy Desk  
Virginia Grant Copy Desk

Cedric d'Esbaum Sports Editor  
Paul Boyd Writer  
Vera Chandler Society Editor  
Winifred LaFond Writer  
Vivienne Mosher Writer  
Josephine Broadard P. I. P. A. Editor  
Exchanges Helen Kerr

Women's Activities Grace Nixon  
Women's Activities Virginia Nielsen  
Columns Lucile Eaton  
Edwin Siggins  
Dramatics Sylvia Oldman  
Music Letha Wilton  
Debate Rauline Brown

Reporters: Floyd W. Lansdon, Louise Dunlap, Margaret Wilson, Frank A. Warner, Freda White, Eugene Whitman, Edward R. Wahl, Elmer Thorsen, Nell Jones, Laura Cahoun, Harry Schutler, Beatrice Pearce, Anne Johnson, Cathryn Callaway.

### AN ADDITION

GRADUALLY we see the Idaho campus being built up, fraternities and sororities adding their share to this progress. Last week came the announcement that the Alpha Tau Omega fraternity will spend \$65,000 on a new home and grounds during this summer.

Continual building of modern group houses has placed Idaho among the leading institutions of the country as to Greek Letter fraternity buildings. Beginning in 1925, a big boom in group house building was started on the campus. One new house was constructed in 1925 and the following year saw two sorority homes and two fraternity buildings erected.

Greek letter homes and property on the campus now are valued at over half a million dollars, with the new house to built this summer to run this total up to almost three quarters of a million dollars. Since the start of the fraternity system on the Idaho campus in 1905, when Kappa Sigma got its charter, rapid strides have been made. Twenty national and local organizations are found here today.

Idaho's fraternities center on Elm street and the new home is to be constructed at the corner of Deakin and University avenues, according to present plans. This will fill in another gap, of which there are few remaining.

Idaho's fraternity system can be ranked as one of the best in the country and it is hoped that it will always be considered in this light.

### A NOTED VISITOR

IDAHO is entertaining a noted visitor on the campus the first part of this week—a man who should need no introduction to the student body. This is Governor H. C. Baldrige, who is here to see the university function as an educational institution.

It is not necessary for the campus to be on dress parade for the benefit of the governor, because he does not want to see it in that light. He has been on the campus before when things were not normal and he wants to see it as it is. He has visited here during commencement and at the opening of school and now he would like to see the students at work.

It is seldom that the governor finds time to break away from his office in Boise to visit various parts of the state. It is certain that he would like to make this trip something of an excursion and it is up to the students to see that his result is obtained.

### PROPOSED CHANGES

SEVERAL proposed amendments to the ASUI constitution will be read before the student body at special assembly Thursday afternoon at 4 o'clock. These proposed changes, or most of them, have already received the approval of the executive board and must be read to the students before they can be placed on the ballot for vote.

A number of changes in the present system are to be made if these amendments go through and it is to the students to know what each one is about in order for him to vote intelligently. This is the reason for reading proposed amendments at a general assembly and it is the duty of the students to attend.

One proposed amendment would put the rifle team under a department, another would change the present system of naming the editors of the three student publications on the campus. Another has to do with athletic awards for women. If students are not acquainted with the provisions

of these proposals it will be hard for them to cast intelligent ballots.

### THE PERILS OF CO-EDUCATION

A FOOTBALL coach attributed a spotty season to the distracting presence of co-eds in the university. Another found a reason for successful seasons in the fact that his was a boys' school. The idea does not square with romance if it does with fact. It has been claimed that men were more virile under the eyes of women.

Sometimes, and perhaps soon, we think the whole question of co-education ought to be investigated. The system has been in practice long enough for its results to have scientific value.

Our own impression is that co-education is a very mixed blessing. As someone once put it, "It's swell for the girls and hell for the boys."

The average girl matures two or three years earlier than the average boy. By the time she gets to college she is an adult physically, mentally, and socially. Her chief concern is finding a husband, (!) and a co-ed vocational college offers her four years of daily contact with a select type of male. It is a made-to-her-order bargain counter in husbands, and the number of college romances attest to the fact that the co-ed is aware of her opportunity and takes full advantage of it.

The average boy, on the other hand reaches college still in the horse-play stage of adolescence. He still needs to ease his growing pains with rough sports, and his interests are still the learning, and making, and collecting interests of the boy. The girl is a woman when she reaches college; the boy is not a man until he leaves college. The contacts of co-education, which are natural to the girl, are unnatural to the boy. He is distracted. . . . The girl is being fitted for life; the boy is wasting the time he should be using in becoming fitted for life.

So we suggest co-education — if any—for women. For men, four years among men. Which presents rather a problem in arithmetic, if you care to take it as seriously as that.—Chicago Tribune.

### ENGINEERS' MEETING

There will be a meeting of the general Engineers' Day committees to-night in the library of the Engineering building at 7:15 o'clock. Final plans for Engineering Day will be announced and discussed.

Dinner guests at Hays hall Wednesday were Maurice Nelson, George Johnson, Frank Wenzler, Al Dean, Floyd Suter, John Glase, Art Schwartz, Zenhauer and Lawrence Theike.

## KAMPUS KATIE

RIGHTS FOR MEN!

GENTLEMAN SUFFRAGE

MOVEMENT ON CAMPUS!

MOSCOW, IDAHO, March 30.—Claiming that women have too long carried the honors of May Day, gentlemen co-eds of the University of Idaho have started a movement to put men into the offices of "May Queen," Page and Maid of Honor. Candidates will also be run for parts in the anesthetic dances.

MAY QUEEN: Harvey (Fat) Sumpter.  
MAID OF HONOR: Chas. (Chuck) Diehl.

PAGE: Arthur (Shorty) Cheyne.

Dance of Spring

Buttercup William Kershensnik  
Bluebell Dwight Disney  
Primrose Mr. Eubanks

The Fairies Ball

Princess Sweetclover Floyd Taylor  
Grechen Mr. Hamburg Hamilton  
Hazel Paul Hutchison  
Goldylocks Herbert Canine  
Peer Gynt Horace Porter

Nymphs of the Night

Nymph No. 1 Clarence Hazel  
Nymph No. 2 Al Reading  
Flowerlets O'Brien, Yost, Long, Bitner  
Nymph E-dah-ho Clink

Eligibles for MORTAR BOARD:

Roy Freeman  
Dan McGrath  
Beardslee Merrill  
Harold Boyer

Upperclassman: "Did you water the plants, Mary-Jane?"  
Pledge: "Yeh, can't you hear the water dripping on the carpet?"

PHI PHI PHI HAS A MEETING

meeting Called to order by eminent commander, Duffy. Minutes of last meeting read and approved. Motion by brother Plank that music of Synopated Sinners be engaged for next house dance. Motion killed by brother Snoop who doesn't like the way they play their waltzes. Motion by brother Scrub that new stoppers be provided for the third floor bathtubs. Committee on stoppers appoints. Brothers Jones, Brown and Black. Pledge Check brought before meeting on complaint of brother Paphenpak that pledge Check had hic-coughed in his present. Pledge Check punished by slight corrugation on southeastern anatomy. Motion by brother Duckett that pint bottles of Isterline be placed in the guest rooms during homecoming. Motion carried in spite of brother Pharnack, whose father makes May Breath. Brother Understud moves that meeting be adjourned as he has date with Cynthia Sneeze. Motion seconded by Brother Whoop who has tickets to Love and Learn.

## EASLEY TAKES NEW POSITION IN IOWA

Psychology Instructor Will Leave Idaho In July

Leaving Idaho to study for his doctor's degree at the University of Iowa, Howard Easley of the department of psychology, has accepted the position of assistant in a child welfare research bureau in Iowa, he stated Monday. He will leave Moscow immediately after the end of summer school in July.

Mr. Easley came to Idaho three years ago. He has been teaching courses in infant and child psychology, as well as handling classes in several other courses in the department.

He received his bachelor's degree from Union university, Tennessee, and his master's from Peabody Teachers college, Nashville. He taught at Darsburg high school, Tennessee, and was a laboratory assistant at Vanderbilt university before coming to Idaho.

Sunday dinner guests of Delta Gamma were Irene Thompson, Edith Miller, Beag Bangs, Louise Braham and Catherin York.

CLASSIFIED A D  
LOST—A brown leather jacket near the Blue Bucket the night of the Junior parade. Reward, call 8411.

## Phi Beta Members Offered Lessons in New "Varsity Drag"

At last salvation for the members of Phi Beta Kappa!

Commonly represented as long of face and short of pep, the wearers of the Phi Beta Kappa key really have a suppressed desire to be collegiate and snappy; at least, this seems to be the promise of the secretary of a circular received by the members of that august body last week.

"Learn to Do the Varsity Drag" shouts the headline from the top of the circular. Eight inspiring illustrations of this dance adorn the sheet. Quite unimposing is the envelope which brought the circular to Dr. F. C. Church, secretary of Phi Beta Kappa. It has only the address, and gives no warning of the nature of the tempting contents.

An unparalleled opportunity is offered to the attractive co-ed who wishes to raise her grade. In lieu of "red appleing," she may offer her services as the partner of her professor in the process of limbering muscles cramped from long hours of sitting at his desk.

Least the noble senior depart the portals of learning without being educated, "The Dance Magazine" sends out this free instruction in the terpsichorean art. What price a Phi Beta Kappa key if its wearer has never learned to "strut his stuff" at the Blue Bucket?

## VON ENDE HOME MAY BE CASA ESPANOLA

Spanish Atmosphere to Be Created for Summer School Students

Probability that the house owned by C. L. von Ende in the eastern portion of the city will be selected for the Moscow "Casa Espanola" for the coming summer, was announced this week by members of the romance language department who will conduct the house this year. The house, at the present time, is occupied by Prof. A. S. Howe and Alberto Vas-

quez of the department.  
Music, games, dancing, picnics, excursions and all other features of the summer will be conducted under a Spanish atmosphere. Even the food, as far as practical, will be in Spanish style. Fees for students will be exactly the same as for the regular summer school.

One year of college Spanish or two years of high school Spanish are the only requirements for the course. In addition to the recreational side of the plan, every member will be required to take a course in conversational Spanish and will do individual work on some phase of Spanish which appeals to him. A total of six credits may be earned in this way.

Mr. Howe and Mr. Vasquez will have charge of all the instruction but the care of the house will be under Mrs. C. C. Howe, assisted by Senora Ramona Vasquez Ramos.

To the present time seven or eight students have signified their intention of staying in the summer home.

### Student Opinion

To the Editor of The Argonaut:  
A great many of the students on the campus tell me they do not even know the ASUI candidates. I know only a few of those running, and would be glad if I could see the photographs of all the candidates in order to fill these positions out of the entire student body through election and to have them appointed by the executive board. The appointments

Yours truly,  
Carlos M. Allen.

### ASUI CONSTITUTION AMENDMENTS UP BEFORE STUDENTS

(Continued from page 1)

ing the associate editors of The Argonaut, Blue Bucket and Gem of the Mountains. The proposed change is to take the naming of the persons to fill these positions out of the entire student body through election and to have them appointed by the executive board. The appointments

would be made from persons nominated by the publication boards of the various publications. The amendment also proposed to place the associate editor of each publication on this board, making each one consisting of the president of the ASUI, the editor, associate editor and ranking senior on the staff.  
After being presented to the board, this amendment will be read at the assembly Thursday with the others.  
They will all be placed on the ballot at the general election May 3.

DIAL 5501  
15 cent fares.  
BLUE LINE CAB CO.  
10 cents to campus



## Spring Beauties

Dainty, colorful—delicate as a spring bouquet is this new spring hosiery. Two excellent NEW styles to choose from—one a zig-zag heel outlined in black and the other a new idea in Fluer de Lys heels.

### BOLLES

## BUSTER BROWN SHOE STORE

NEW YORK UNIVERSITY SCHOOL OF RETAILING  
2 Graduate Fellowships  
5 Scholarships

Retailing is an attractive field for college graduates. Experience in department stores is linked with instruction. Master of Science in Retailing degree granted upon completion of one year of graduate work. Illustrated booklet on request. For further information write Dr. Norris A. Brisco, Director, New York University School of Retailing, Washington Square East, N. Y. C.

# Blindfolded . . . in scientific test of leading Cigarettes, Princess Paul Chavchavadze selects OLD GOLD

"I was much intrigued by the invitation to make a blindfold test of your leading brands of American cigarettes, to see how they compared with each other and with those I had smoked abroad. Could one really taste the difference? I wondered.

"But when I was handed these cigarettes, one by one, I realized at once that there was a difference and that the test was conclusive. One cigarette was so much more appealing, so much more delicate in flavor. Oh, and so much smoother!

"When the test was over and I was told that the cigarette of my choice was OLD GOLD I understood at once why this cigarette is so popular among my American friends."

*Nina Chavchavadze*



PRINCESS PAUL CHAVCHAVADZE, Sister of Mrs. Wm. B. Leeds

### How Test Was Made

Subject was blindfolded, and, in the presence of two responsible witnesses, was given one each of the four leading cigarettes to smoke. To clear the taste, coffee was served before each cigarette. The Princess was entirely unaware of the identity of these cigarettes during test. After smoking the four cigarettes, the Princess was asked to designate by number her choice. Without hesitation she replied, "No. 3" . . . which was OLD GOLD.

SMOOTHER AND BETTER - NOT A COUGH IN A CARLOAD

## MAY 13th IS Mother's Day

Flowers and candy are soon gone and forgotten but a BOOK

"will be a treasure to mothers—"  
"will be a pleasure to others"

We offer these three titles in hand decorated gift boxes:

"The Mother's Recompense", Edith Wharton

"The Mother," Grazia Deledda

"Mother and Son," Romain Rolland

Place orders with JACK SHEEHAN or MELVILLE JOHNSON before May 1st

Delivery guaranteed for mailing



# SOCIETY



A large number of enjoyable events among which the Story Book ball was outstanding, made last week end an extremely pleasant one socially. The formal given by Lambda Chi Alpha was another of the prominent social affairs. Several informal house dances were given, one of the most clever of these being the "artist" dance given by the underclassmen of Tau Kappa Epsilon.

This week attention will be centered on the high school music contest which begins Thursday and lasts through the week end. Guests will be entertained at the fraternity and sorority houses.

- April 26 Scabbard and Blade Formal Dinner Dance
- High School Music Contest
- April 27
- Phi Beta Phi Formal Dance
- Delta Gamma and Gamma Phi
- Beta Freshman Dance
- Daleth Teth Gmel Dance
- Sigma Nu Dance
- High School Music Contest
- April 28
- High School Music Contest
- April 29
- Y. W. C. A. Waif's Breakfast
- May 4
- Miami Triad Dance
- Beta Chi Underclassmen's Dance
- ASUI Play Production
- Phi Chi Theta Bridge Tea
- May 5
- Kappa Sigma Formal Dinner Dance
- T. K. E. Annual Spring Dance
- Sigma Nu Upperclassmen's Dance

**PHI DELTS GIVE STORY BOOK BALL**

The most unique house dance of the year was the Story Book ball given by Phi Delta Theta at the chapter house Saturday evening. In a gorgeously decorated representation of an old medieval castle, and among characters ranging from Helen of Troy to Abraham Lincoln, the dancers found little of story book lore left to the imagination.

The colored Gothic windows and a "throne room" were also characteristic details. A most novel feature was a large story book covering half a wall, each page containing pictures of story book fame and at the same time announcing the number of the dance.

Variety, novelty and art were present in the costumes worn, for everything from jewel-bedecked princesses, kings and opera stars to pirates, peasants and cowboys were represented. Some of the prominent characters of fact and fiction were Hans and Gretchen, Napoleon and Catherine, George and Martha Washington and the Three Musketeers.

During intermission W. L. "Ray" Stephens was crowned "king" of the ball, and he in turn presented the lady's prize to Miss Carolyn Silverthorne, Lewiston, who was dressed as the Queen of Diamonds.

The guest list included Carolyn Silverthorne, Josephine Broadwater, Alice Ross, Mattie McMaisters, Grace Dawson, Janet Hawkins, Mary Thomas, Elizabeth Smith, Alice Yang, Helen Campbell, Vivienne Mosher, Helen McConnell, Helen Wheeler, Janet Deacon, Josephine Brossard, Clara Kall, Catherine Hahn, Ethel Lafferty, Jess Lee Hall, Dorothy Hall, Charlotte Smith, Dorothy Hirschman, Elizabeth Eastman, Lois Taylor, Genevieve Dyer, Marth Adams, Mary Murphy, Constance Elder, Hazel Simonds, Mary Ellen Adams, Ardyll Mellinger, Evelyn Banckster, Nadine Tucker, Vera Chandler, Rita Garlinghouse, Gussie Maher, Fern Bowen, Marguerite Thometz, Sonoma Steele, Katherine Beam, Ruth Annis, Elinor Jackson, Ferrol Richardson, Robert Aylshie, Leon Weeks and Willard Lambdin, W. H. Stephens and Prof and Mrs. Theodore Kratt.

Patrons and patronesses were Mr. and Mrs. Orin E. Fitzgerald, Dean and Mrs. Ivan C. Crawford, Mr. and Mrs. Howard David, and Theodore Turner.

The programs were one of the most delightfully original features of the ball. They were designed as photograph folders of black leather bearing the fraternity crest, and when opened revealed the photograph of the host.

Punch in kegs, served from unique beer stels was doubly enjoyed. Music was furnished by Johnnie Soden's orchestra.

**LAMBDA CHI FORMAL DRAWS MANY**

Lambda Chi Alpha entertained at a pretty spring formal at the Blue Bucket Inn Friday evening. Colored lights and tall baskets of spring flowers were effectively combined in the decorative scheme. Black leather created card cases formed packs of the programs. Edwin Siggas entertained with a clever stunt. Music was furnished by Clair Gale's orchestra.

Guests were Prof. and Mrs. Theodore Kratt, Prof. and Mrs. T. S. Kerr, Prof. and Mrs. G. L. Luke, Helen Macey, Eleanor Galloway, Edna Richardson, Helen Young, Virginia Nelson, Marylou Craven, Ruth Newhouse, Edith Eklund, Agnes Moore, Inger Hove, Laura Manning, Helen Douglas, Florence Oberg, Irene Luke, Letha Wilton, Thelma McGinnis, Lois Kennedy, Marifrances Gelsendorfer, Edla Rice, Gertrude Stringer, Anna Day, Margaret Gnaedinger, Ruth Fisher, Helen Wann, Charlotte Toxstedt, Lois Miller, Clarice Anderson Katharine Trousdale, Flo Mathewson, Vera Chandler, Bernice Turner, Charlotte Smith, Mary Ellen Adams, Winifred LaFond, Lulu Grace Allen, Margie Green, Mary King and Gussie Maher.

Out of town guests were Mrs. L. E. Shropshire, Daphne Gowen, Carolyn Silverthorn, Idaho Lipps, Clara Lipps, Jack Morgan and Earl Menette, Lewiston; Hester Eslick, Esther Donnellan Given Bonne, Hyde Morrison, Reuben Youngquist and Arthur Ganzen, Pullman; Grant Hagelund and Donald Bennett, Spokane; Josh Boyd and Bruce Haecue, Kellogg; and William Holden, Seattle.

**ALPHA CHI'S ENTERTAIN AT DANCE**

Pullman and Idaho chapters of Alpha Chi Omega held their annual spring sport dance Saturday evening at the Elks' temple. Clusters of vari-colored balloons were suspended from the ceiling and striped canopied porch swings lent a festive note. Music was furnished by Treadwell's orchestra of Pullman.

Pullman guests were Don Ternshian, Burton Keener, Dale Whitman, Adrian Nelson, Jack Zane, Carl Dilts, Edward Chittendon, Leo Sandstrom, Herbert Higgins, Hyde Morrison, Wilson Schulthess, William Lindon, James Prince, Bud Harms, William Weingarten, Glen Phillips, Jack Hinton, Dick Hamilton, Jack Garaham, Louis Edos, Danny Horan, Gus Loums, Tom Meade, Walter Rains, Melvin Hinds, Tom Taylor Leo Sanderson and Floyd Bryant.

**Idaho guests were:** Kenneth O'Neil, Louis Soderburg, Hal Bowen, Marshall Wilderman, Fred Auger, Earl McDonald, Horace Porter, Glen Wright, Elbert Stelmon, Allen Janssen, George Paulson, George Greene, Gus Bjork, Eldon Hatfield, Darwin Burchler, Jacob Coonrod, Ray Nims, Dean Arnold, Bartlet Moss, Roscoe Brooks, Dana White, Clara Killoran, Max Hardwick, James O'Brien, Carl Nelson, Frank McKeown, Percy Wilcox, Stewart Maxey, Carey Harmon, John Hamilton, Paul Gowen, Nick Sullivan, Clarence Myrens and Norman Gillam.

**T. M. A. DANCE AT BLUE BUCKET INN**

Tau Men Alpha entertained Saturday night at the Blue Bucket Inn with its spring informal dance. Large baskets and bowls filled with pink flowers formed the decoration motif. Clair Gale's orchestra furnished the music.

Guests were Pauline Paterka, Florence Diethelm, Lois Gillett, Mary Hall, Jean Edmiston, Margaret Willson, Inger Hove, Dorothy DeLashmunt, Mildred Clara, Francis Phillip, Bernice Bjornson, Violet Verne, Beryl Rodgers, Ruth Fanning, Josephine Cole, Alta Tupper, Mary Gillespie, Cleo Miller, Helen Borden, Josephine Throckmorton, Alta Lawrence, Myrtle Rindy, Mildred Williams, Ina McCrea, Ruth Danie's, Carrell Carter, Pauline Clare, Hazel Ownsby, Elva Mink, Esther Bartlett, Lauri Allison, Ruth Miller, Florence Ruder, Marjorie Throckmorton, Helen Wiswall, Crystal Weed, Zada Eskin, Helen Matsoh, Myrtle Haugse, Catherine Callaway, Vesta Brewink, Gilbert Schumann and George Ross. Guests from Pullman were S. Mahon, J. Walton, D. Reed, I. Sellig, D. Alley, M. Packard and Alfred Maughn.

**Idaho guests were:** Kenneth O'Neil, Louis Soderburg, Hal Bowen, Marshall Wilderman, Fred Auger, Earl McDonald, Horace Porter, Glen Wright, Elbert Stelmon, Allen Janssen, George Paulson, George Greene, Gus Bjork, Eldon Hatfield, Darwin Burchler, Jacob Coonrod, Ray Nims, Dean Arnold, Bartlet Moss, Roscoe Brooks, Dana White, Clara Killoran, Max Hardwick, James O'Brien, Carl Nelson, Frank McKeown, Percy Wilcox, Stewart Maxey, Carey Harmon, John Hamilton, Paul Gowen, Nick Sullivan, Clarence Myrens and Norman Gillam.

**Idaho guests were:** Kenneth O'Neil, Louis Soderburg, Hal Bowen, Marshall Wilderman, Fred Auger, Earl McDonald, Horace Porter, Glen Wright, Elbert Stelmon, Allen Janssen, George Paulson, George Greene, Gus Bjork, Eldon Hatfield, Darwin Burchler, Jacob Coonrod, Ray Nims, Dean Arnold, Bartlet Moss, Roscoe Brooks, Dana White, Clara Killoran, Max Hardwick, James O'Brien, Carl Nelson, Frank McKeown, Percy Wilcox, Stewart Maxey, Carey Harmon, John Hamilton, Paul Gowen, Nick Sullivan, Clarence Myrens and Norman Gillam.

**Idaho guests were:** Kenneth O'Neil, Louis Soderburg, Hal Bowen, Marshall Wilderman, Fred Auger, Earl McDonald, Horace Porter, Glen Wright, Elbert Stelmon, Allen Janssen, George Paulson, George Greene, Gus Bjork, Eldon Hatfield, Darwin Burchler, Jacob Coonrod, Ray Nims, Dean Arnold, Bartlet Moss, Roscoe Brooks, Dana White, Clara Killoran, Max Hardwick, James O'Brien, Carl Nelson, Frank McKeown, Percy Wilcox, Stewart Maxey, Carey Harmon, John Hamilton, Paul Gowen, Nick Sullivan, Clarence Myrens and Norman Gillam.

**UNDERWORLD**

with CLIVE BROWN, EVELYN BRENT, GEORGE BANCROFT, LARRY SEMON

A HECTOR TURNBULL PRODUCTION

**HAYS HALL SPRING INFORMAL**

Hays hall entertained with a spring informal Friday evening. Daffodils, sweet peas and fern were used for decoration. Johnnie Soden's orchestra played.

The guests were as follows: Lelloy Hughes, Lewiston; Archie McCoy, Genesee; George Swindaman, Robert Vincent, Nat Zablou, Fred Jacobs, Frank Bovey, Charles Diehl, Russell Hall, Ed Jarboe, Floyd Albertson, Henry Grinsfelder, Gordon Flack, Edward Ellis, Francis Nomini, Vernon Allen, Carl Aschenbrenner, Vernon Hudelson, Frank Simmin, Edward Specht, Robert Renolds, Ed McMonigle, Arthur Griffin, Murtha Cline, Harry Yost, Arnold Calvert, Gerald Gohrke, Cecil Hagen, Ralph Washburn, Chris Morley, Wayne Roth, Gerald Grimm, Adolph Green, Ade Nelson, Adrian Des Marais, Will Young, Cedric d'Esbaum, Laurence Frisch, Jack Dodd, Kenneth Barrett, Herbert Clare, Kenneth Skogg, Asael Tall, Hartley Kester and Vaughn Iorns.

**FROSH GLEE IS PEPPY AFFAIR**

The Frosh Glee given Friday night at the Elks' Temple was, as the name suggests, one of the "peppiest" affairs given this year. The dance was exclusive to all but freshmen and their accompanying friends. The hall was decorated very uniquely with 16 panels of futuristic paintings, each with a different and original design. The programs were in the form of a diary, describing the events of the evening and the different dancers in a style appropriate to freshmen. The serving of animal crackers and punch labelled the party as a distinct freshman affair. Music was furnished by Hollister's orchestra.

**Idaho guests were:** Kenneth O'Neil, Louis Soderburg, Hal Bowen, Marshall Wilderman, Fred Auger, Earl McDonald, Horace Porter, Glen Wright, Elbert Stelmon, Allen Janssen, George Paulson, George Greene, Gus Bjork, Eldon Hatfield, Darwin Burchler, Jacob Coonrod, Ray Nims, Dean Arnold, Bartlet Moss, Roscoe Brooks, Dana White, Clara Killoran, Max Hardwick, James O'Brien, Carl Nelson, Frank McKeown, Percy Wilcox, Stewart Maxey, Carey Harmon, John Hamilton, Paul Gowen, Nick Sullivan, Clarence Myrens and Norman Gillam.

**Idaho guests were:** Kenneth O'Neil, Louis Soderburg, Hal Bowen, Marshall Wilderman, Fred Auger, Earl McDonald, Horace Porter, Glen Wright, Elbert Stelmon, Allen Janssen, George Paulson, George Greene, Gus Bjork, Eldon Hatfield, Darwin Burchler, Jacob Coonrod, Ray Nims, Dean Arnold, Bartlet Moss, Roscoe Brooks, Dana White, Clara Killoran, Max Hardwick, James O'Brien, Carl Nelson, Frank McKeown, Percy Wilcox, Stewart Maxey, Carey Harmon, John Hamilton, Paul Gowen, Nick Sullivan, Clarence Myrens and Norman Gillam.

**Idaho guests were:** Kenneth O'Neil, Louis Soderburg, Hal Bowen, Marshall Wilderman, Fred Auger, Earl McDonald, Horace Porter, Glen Wright, Elbert Stelmon, Allen Janssen, George Paulson, George Greene, Gus Bjork, Eldon Hatfield, Darwin Burchler, Jacob Coonrod, Ray Nims, Dean Arnold, Bartlet Moss, Roscoe Brooks, Dana White, Clara Killoran, Max Hardwick, James O'Brien, Carl Nelson, Frank McKeown, Percy Wilcox, Stewart Maxey, Carey Harmon, John Hamilton, Paul Gowen, Nick Sullivan, Clarence Myrens and Norman Gillam.

**Idaho guests were:** Kenneth O'Neil, Louis Soderburg, Hal Bowen, Marshall Wilderman, Fred Auger, Earl McDonald, Horace Porter, Glen Wright, Elbert Stelmon, Allen Janssen, George Paulson, George Greene, Gus Bjork, Eldon Hatfield, Darwin Burchler, Jacob Coonrod, Ray Nims, Dean Arnold, Bartlet Moss, Roscoe Brooks, Dana White, Clara Killoran, Max Hardwick, James O'Brien, Carl Nelson, Frank McKeown, Percy Wilcox, Stewart Maxey, Carey Harmon, John Hamilton, Paul Gowen, Nick Sullivan, Clarence Myrens and Norman Gillam.

**Idaho guests were:** Kenneth O'Neil, Louis Soderburg, Hal Bowen, Marshall Wilderman, Fred Auger, Earl McDonald, Horace Porter, Glen Wright, Elbert Stelmon, Allen Janssen, George Paulson, George Greene, Gus Bjork, Eldon Hatfield, Darwin Burchler, Jacob Coonrod, Ray Nims, Dean Arnold, Bartlet Moss, Roscoe Brooks, Dana White, Clara Killoran, Max Hardwick, James O'Brien, Carl Nelson, Frank McKeown, Percy Wilcox, Stewart Maxey, Carey Harmon, John Hamilton, Paul Gowen, Nick Sullivan, Clarence Myrens and Norman Gillam.

**Idaho guests were:** Kenneth O'Neil, Louis Soderburg, Hal Bowen, Marshall Wilderman, Fred Auger, Earl McDonald, Horace Porter, Glen Wright, Elbert Stelmon, Allen Janssen, George Paulson, George Greene, Gus Bjork, Eldon Hatfield, Darwin Burchler, Jacob Coonrod, Ray Nims, Dean Arnold, Bartlet Moss, Roscoe Brooks, Dana White, Clara Killoran, Max Hardwick, James O'Brien, Carl Nelson, Frank McKeown, Percy Wilcox, Stewart Maxey, Carey Harmon, John Hamilton, Paul Gowen, Nick Sullivan, Clarence Myrens and Norman Gillam.

**Idaho guests were:** Kenneth O'Neil, Louis Soderburg, Hal Bowen, Marshall Wilderman, Fred Auger, Earl McDonald, Horace Porter, Glen Wright, Elbert Stelmon, Allen Janssen, George Paulson, George Greene, Gus Bjork, Eldon Hatfield, Darwin Burchler, Jacob Coonrod, Ray Nims, Dean Arnold, Bartlet Moss, Roscoe Brooks, Dana White, Clara Killoran, Max Hardwick, James O'Brien, Carl Nelson, Frank McKeown, Percy Wilcox, Stewart Maxey, Carey Harmon, John Hamilton, Paul Gowen, Nick Sullivan, Clarence Myrens and Norman Gillam.

**Idaho guests were:** Kenneth O'Neil, Louis Soderburg, Hal Bowen, Marshall Wilderman, Fred Auger, Earl McDonald, Horace Porter, Glen Wright, Elbert Stelmon, Allen Janssen, George Paulson, George Greene, Gus Bjork, Eldon Hatfield, Darwin Burchler, Jacob Coonrod, Ray Nims, Dean Arnold, Bartlet Moss, Roscoe Brooks, Dana White, Clara Killoran, Max Hardwick, James O'Brien, Carl Nelson, Frank McKeown, Percy Wilcox, Stewart Maxey, Carey Harmon, John Hamilton, Paul Gowen, Nick Sullivan, Clarence Myrens and Norman Gillam.

**Idaho guests were:** Kenneth O'Neil, Louis Soderburg, Hal Bowen, Marshall Wilderman, Fred Auger, Earl McDonald, Horace Porter, Glen Wright, Elbert Stelmon, Allen Janssen, George Paulson, George Greene, Gus Bjork, Eldon Hatfield, Darwin Burchler, Jacob Coonrod, Ray Nims, Dean Arnold, Bartlet Moss, Roscoe Brooks, Dana White, Clara Killoran, Max Hardwick, James O'Brien, Carl Nelson, Frank McKeown, Percy Wilcox, Stewart Maxey, Carey Harmon, John Hamilton, Paul Gowen, Nick Sullivan, Clarence Myrens and Norman Gillam.

**Idaho guests were:** Kenneth O'Neil, Louis Soderburg, Hal Bowen, Marshall Wilderman, Fred Auger, Earl McDonald, Horace Porter, Glen Wright, Elbert Stelmon, Allen Janssen, George Paulson, George Greene, Gus Bjork, Eldon Hatfield, Darwin Burchler, Jacob Coonrod, Ray Nims, Dean Arnold, Bartlet Moss, Roscoe Brooks, Dana White, Clara Killoran, Max Hardwick, James O'Brien, Carl Nelson, Frank McKeown, Percy Wilcox, Stewart Maxey, Carey Harmon, John Hamilton, Paul Gowen, Nick Sullivan, Clarence Myrens and Norman Gillam.

**Idaho guests were:** Kenneth O'Neil, Louis Soderburg, Hal Bowen, Marshall Wilderman, Fred Auger, Earl McDonald, Horace Porter, Glen Wright, Elbert Stelmon, Allen Janssen, George Paulson, George Greene, Gus Bjork, Eldon Hatfield, Darwin Burchler, Jacob Coonrod, Ray Nims, Dean Arnold, Bartlet Moss, Roscoe Brooks, Dana White, Clara Killoran, Max Hardwick, James O'Brien, Carl Nelson, Frank McKeown, Percy Wilcox, Stewart Maxey, Carey Harmon, John Hamilton, Paul Gowen, Nick Sullivan, Clarence Myrens and Norman Gillam.

**Idaho guests were:** Kenneth O'Neil, Louis Soderburg, Hal Bowen, Marshall Wilderman, Fred Auger, Earl McDonald, Horace Porter, Glen Wright, Elbert Stelmon, Allen Janssen, George Paulson, George Greene, Gus Bjork, Eldon Hatfield, Darwin Burchler, Jacob Coonrod, Ray Nims, Dean Arnold, Bartlet Moss, Roscoe Brooks, Dana White, Clara Killoran, Max Hardwick, James O'Brien, Carl Nelson, Frank McKeown, Percy Wilcox, Stewart Maxey, Carey Harmon, John Hamilton, Paul Gowen, Nick Sullivan, Clarence Myrens and Norman Gillam.

**Idaho guests were:** Kenneth O'Neil, Louis Soderburg, Hal Bowen, Marshall Wilderman, Fred Auger, Earl McDonald, Horace Porter, Glen Wright, Elbert Stelmon, Allen Janssen, George Paulson, George Greene, Gus Bjork, Eldon Hatfield, Darwin Burchler, Jacob Coonrod, Ray Nims, Dean Arnold, Bartlet Moss, Roscoe Brooks, Dana White, Clara Killoran, Max Hardwick, James O'Brien, Carl Nelson, Frank McKeown, Percy Wilcox, Stewart Maxey, Carey Harmon, John Hamilton, Paul Gowen, Nick Sullivan, Clarence Myrens and Norman Gillam.

**Idaho guests were:** Kenneth O'Neil, Louis Soderburg, Hal Bowen, Marshall Wilderman, Fred Auger, Earl McDonald, Horace Porter, Glen Wright, Elbert Stelmon, Allen Janssen, George Paulson, George Greene, Gus Bjork, Eldon Hatfield, Darwin Burchler, Jacob Coonrod, Ray Nims, Dean Arnold, Bartlet Moss, Roscoe Brooks, Dana White, Clara Killoran, Max Hardwick, James O'Brien, Carl Nelson, Frank McKeown, Percy Wilcox, Stewart Maxey, Carey Harmon, John Hamilton, Paul Gowen, Nick Sullivan, Clarence Myrens and Norman Gillam.

**Idaho guests were:** Kenneth O'Neil, Louis Soderburg, Hal Bowen, Marshall Wilderman, Fred Auger, Earl McDonald, Horace Porter, Glen Wright, Elbert Stelmon, Allen Janssen, George Paulson, George Greene, Gus Bjork, Eldon Hatfield, Darwin Burchler, Jacob Coonrod, Ray Nims, Dean Arnold, Bartlet Moss, Roscoe Brooks, Dana White, Clara Killoran, Max Hardwick, James O'Brien, Carl Nelson, Frank McKeown, Percy Wilcox, Stewart Maxey, Carey Harmon, John Hamilton, Paul Gowen, Nick Sullivan, Clarence Myrens and Norman Gillam.

**Idaho guests were:** Kenneth O'Neil, Louis Soderburg, Hal Bowen, Marshall Wilderman, Fred Auger, Earl McDonald, Horace Porter, Glen Wright, Elbert Stelmon, Allen Janssen, George Paulson, George Greene, Gus Bjork, Eldon Hatfield, Darwin Burchler, Jacob Coonrod, Ray Nims, Dean Arnold, Bartlet Moss, Roscoe Brooks, Dana White, Clara Killoran, Max Hardwick, James O'Brien, Carl Nelson, Frank McKeown, Percy Wilcox, Stewart Maxey, Carey Harmon, John Hamilton, Paul Gowen, Nick Sullivan, Clarence Myrens and Norman Gillam.

**Idaho guests were:** Kenneth O'Neil, Louis Soderburg, Hal Bowen, Marshall Wilderman, Fred Auger, Earl McDonald, Horace Porter, Glen Wright, Elbert Stelmon, Allen Janssen, George Paulson, George Greene, Gus Bjork, Eldon Hatfield, Darwin Burchler, Jacob Coonrod, Ray Nims, Dean Arnold, Bartlet Moss, Roscoe Brooks, Dana White, Clara Killoran, Max Hardwick, James O'Brien, Carl Nelson, Frank McKeown, Percy Wilcox, Stewart Maxey, Carey Harmon, John Hamilton, Paul Gowen, Nick Sullivan, Clarence Myrens and Norman Gillam.

**Idaho guests were:** Kenneth O'Neil, Louis Soderburg, Hal Bowen, Marshall Wilderman, Fred Auger, Earl McDonald, Horace Porter, Glen Wright, Elbert Stelmon, Allen Janssen, George Paulson, George Greene, Gus Bjork, Eldon Hatfield, Darwin Burchler, Jacob Coonrod, Ray Nims, Dean Arnold, Bartlet Moss, Roscoe Brooks, Dana White, Clara Killoran, Max Hardwick, James O'Brien, Carl Nelson, Frank McKeown, Percy Wilcox, Stewart Maxey, Carey Harmon, John Hamilton, Paul Gowen, Nick Sullivan, Clarence Myrens and Norman Gillam.

**Idaho guests were:** Kenneth O'Neil, Louis Soderburg, Hal Bowen, Marshall Wilderman, Fred Auger, Earl McDonald, Horace Porter, Glen Wright, Elbert Stelmon, Allen Janssen, George Paulson, George Greene, Gus Bjork, Eldon Hatfield, Darwin Burchler, Jacob Coonrod, Ray Nims, Dean Arnold, Bartlet Moss, Roscoe Brooks, Dana White, Clara Killoran, Max Hardwick, James O'Brien, Carl Nelson, Frank McKeown, Percy Wilcox, Stewart Maxey, Carey Harmon, John Hamilton, Paul Gowen, Nick Sullivan, Clarence Myrens and Norman Gillam.

**Idaho guests were:** Kenneth O'Neil, Louis Soderburg, Hal Bowen, Marshall Wilderman, Fred Auger, Earl McDonald, Horace Porter, Glen Wright, Elbert Stelmon, Allen Janssen, George Paulson, George Greene, Gus Bjork, Eldon Hatfield, Darwin Burchler, Jacob Coonrod, Ray Nims, Dean Arnold, Bartlet Moss, Roscoe Brooks, Dana White, Clara Killoran, Max Hardwick, James O'Brien, Carl Nelson, Frank McKeown, Percy Wilcox, Stewart Maxey, Carey Harmon, John Hamilton, Paul Gowen, Nick Sullivan, Clarence Myrens and Norman Gillam.

**Idaho guests were:** Kenneth O'Neil, Louis Soderburg, Hal Bowen, Marshall Wilderman, Fred Auger, Earl McDonald, Horace Porter, Glen Wright, Elbert Stelmon, Allen Janssen, George Paulson, George Greene, Gus Bjork, Eldon Hatfield, Darwin Burchler, Jacob Coonrod, Ray Nims, Dean Arnold, Bartlet Moss, Roscoe Brooks, Dana White, Clara Killoran, Max Hardwick, James O'Brien, Carl Nelson, Frank McKeown, Percy Wilcox, Stewart Maxey, Carey Harmon, John Hamilton, Paul Gowen, Nick Sullivan, Clarence Myrens and Norman Gillam.

**Idaho guests were:** Kenneth O'Neil, Louis Soderburg, Hal Bowen, Marshall Wilderman, Fred Auger, Earl McDonald, Horace Porter, Glen Wright, Elbert Stelmon, Allen Janssen, George Paulson, George Greene, Gus Bjork, Eldon Hatfield, Darwin Burchler, Jacob Coonrod, Ray Nims, Dean Arnold, Bartlet Moss, Roscoe Brooks, Dana White, Clara Killoran, Max Hardwick, James O'Brien, Carl Nelson, Frank McKeown, Percy Wilcox, Stewart Maxey, Carey Harmon, John Hamilton, Paul Gowen, Nick Sullivan, Clarence Myrens and Norman Gillam.

**Idaho guests were:** Kenneth O'Neil, Louis Soderburg, Hal Bowen, Marshall Wilderman, Fred Auger, Earl McDonald, Horace Porter, Glen Wright, Elbert Stelmon, Allen Janssen, George Paulson, George Greene, Gus Bjork, Eldon Hatfield, Darwin Burchler, Jacob Coonrod, Ray Nims, Dean Arnold, Bartlet Moss, Roscoe Brooks, Dana White, Clara Killoran, Max Hardwick, James O'Brien, Carl Nelson, Frank McKeown, Percy Wilcox, Stewart Maxey, Carey Harmon, John Hamilton, Paul Gowen, Nick Sullivan, Clarence Myrens and Norman Gillam.

**Idaho guests were:** Kenneth O'Neil, Louis Soderburg, Hal Bowen, Marshall Wilderman, Fred Auger, Earl McDonald, Horace Porter, Glen Wright, Elbert Stelmon, Allen Janssen, George Paulson, George Greene, Gus Bjork, Eldon Hatfield, Darwin Burchler, Jacob Coonrod, Ray Nims, Dean Arnold, Bartlet Moss, Roscoe Brooks, Dana White, Clara Killoran, Max Hardwick, James O'Brien, Carl Nelson, Frank McKeown, Percy Wilcox, Stewart Maxey, Carey Harmon, John Hamilton, Paul Gowen, Nick Sullivan, Clarence Myrens and Norman Gillam.

**Idaho guests were:** Kenneth O'Neil, Louis Soderburg, Hal Bowen, Marshall Wilderman, Fred Auger, Earl McDonald, Horace Porter, Glen Wright, Elbert Stelmon, Allen Janssen, George Paulson, George Greene, Gus Bjork, Eldon Hatfield, Darwin Burchler, Jacob Coonrod, Ray Nims, Dean Arnold, Bartlet Moss, Roscoe Brooks, Dana White, Clara Killoran, Max Hardwick, James O'Brien, Carl Nelson, Frank McKeown, Percy Wilcox, Stewart Maxey, Carey Harmon, John Hamilton, Paul Gowen, Nick Sullivan, Clarence Myrens and Norman Gillam.

**Idaho guests were:** Kenneth O'Neil, Louis Soderburg, Hal Bowen, Marshall Wilderman, Fred Auger, Earl McDonald, Horace Porter, Glen Wright, Elbert Stelmon, Allen Janssen, George Paulson, George Greene, Gus Bjork, Eldon Hatfield, Darwin Burchler, Jacob Coonrod, Ray Nims, Dean Arnold, Bartlet Moss, Roscoe Brooks, Dana White, Clara Killoran, Max Hardwick, James O'Brien, Carl Nelson, Frank McKeown, Percy Wilcox, Stewart Maxey, Carey Harmon, John Hamilton, Paul Gowen, Nick Sullivan, Clarence Myrens and Norman Gillam.

**Idaho guests were:** Kenneth O'Neil, Louis Soderburg, Hal Bowen, Marshall Wilderman, Fred Auger, Earl McDonald, Horace Porter, Glen Wright, Elbert Stelmon, Allen Janssen, George Paulson, George Greene, Gus Bjork, Eldon Hatfield, Darwin Burchler, Jacob Coonrod, Ray Nims, Dean Arnold, Bartlet Moss, Roscoe Brooks, Dana White, Clara Killoran, Max Hardwick, James O'Brien, Carl Nelson, Frank McKeown, Percy Wilcox, Stewart Maxey, Carey Harmon, John Hamilton, Paul Gowen, Nick Sullivan, Clarence Myrens and Norman Gillam.

**Idaho guests were:** Kenneth O'Neil, Louis Soderburg, Hal Bowen, Marshall Wilderman, Fred Auger, Earl McDonald, Horace Porter, Glen Wright, Elbert Stelmon, Allen Janssen, George Paulson, George Greene, Gus Bjork, Eldon Hatfield, Darwin Burchler, Jacob Coonrod, Ray Nims, Dean Arnold, Bartlet Moss, Roscoe Brooks, Dana White, Clara Killoran, Max Hardwick, James O'Brien, Carl Nelson, Frank McKeown, Percy Wilcox, Stewart Maxey, Carey Harmon, John Hamilton, Paul Gowen, Nick Sullivan, Clarence Myrens and Norman Gillam.

**Idaho guests were:** Kenneth O'Neil, Louis Soderburg, Hal Bowen, Marshall Wilderman, Fred Auger, Earl McDonald, Horace Porter, Glen Wright, Elbert Stelmon, Allen Janssen, George Paulson, George Greene, Gus Bjork, Eldon Hatfield, Darwin Burchler, Jacob Coonrod, Ray Nims, Dean Arnold, Bartlet Moss, Roscoe Brooks, Dana White, Clara Killoran, Max Hardwick, James O'Brien, Carl Nelson, Frank McKeown, Percy Wilcox, Stewart Maxey, Carey Harmon, John Hamilton, Paul Gowen, Nick Sullivan, Clarence Myrens and Norman Gillam.

**Idaho guests were:** Kenneth O'Neil, Louis Soderburg, Hal Bowen, Marshall Wilderman, Fred Auger, Earl McDonald, Horace Porter, Glen Wright, Elbert Stelmon, Allen Janssen, George Paulson, George Greene, Gus Bjork, Eldon Hatfield, Darwin Burchler, Jacob Coonrod, Ray Nims, Dean Arnold, Bartlet Moss, Roscoe Brooks, Dana White, Clara Killoran, Max Hardwick, James O'Brien, Carl Nelson, Frank McKeown, Percy Wilcox, Stewart Maxey, Carey Harmon, John Hamilton, Paul Gowen, Nick Sullivan, Clarence Myrens and Norman Gillam.

**Idaho guests were:** Kenneth O'Neil, Louis Soderburg, Hal Bowen, Marshall Wilderman, Fred Auger, Earl McDonald, Horace Porter, Glen Wright, Elbert Stelmon, Allen Janssen, George Paulson, George Greene, Gus Bjork, Eldon Hatfield, Darwin Burchler, Jacob Coonrod, Ray Nims, Dean Arnold, Bartlet Moss, Roscoe Brooks, Dana White, Clara Killoran, Max Hardwick, James O'Brien, Carl Nelson, Frank McKeown, Percy Wilcox, Stewart Maxey, Carey Harmon, John Hamilton, Paul Gowen, Nick Sullivan, Clarence Myrens and Norman Gillam.

**Idaho guests were:** Kenneth O'Neil, Louis Soderburg, Hal Bowen, Marshall Wilderman, Fred Auger, Earl McDonald, Horace Porter, Glen Wright, Elbert Stelmon, Allen Janssen, George Paulson, George Greene, Gus Bjork, Eldon Hatfield, Darwin Burchler, Jacob Coonrod, Ray Nims, Dean Arnold, Bartlet Moss, Roscoe Brooks, Dana White, Clara Killoran, Max Hardwick, James O'Brien, Carl Nelson, Frank McKeown, Percy Wilcox, Stewart Maxey, Carey Harmon, John Hamilton, Paul Gowen, Nick Sullivan, Clarence Myrens and Norman Gillam.

**Idaho guests were:** Kenneth O'Neil, Louis Soderburg, Hal Bowen, Marshall Wilderman, Fred Auger, Earl McDonald, Horace Porter, Glen Wright, Elbert Stelmon, Allen Janssen, George Paulson, George Greene, Gus Bjork, Eldon Hatfield, Darwin Burchler, Jacob Coonrod, Ray Nims, Dean Arnold, Bartlet Moss, Roscoe Brooks, Dana White, Clara Killoran, Max Hardwick, James O'Brien, Carl Nelson, Frank McKeown, Percy Wilcox, Stewart Maxey, Carey Harmon, John Hamilton, Paul Gowen, Nick Sullivan, Clarence Myrens and Norman Gillam.

**Idaho guests were:** Kenneth O'Neil, Louis Soderburg, Hal Bowen, Marshall Wilderman, Fred Auger, Earl McDonald, Horace Porter, Glen Wright, Elbert Stelmon, Allen Janssen, George Paulson, George Greene, Gus Bjork, Eldon Hatfield, Darwin Burchler, Jacob Coonrod, Ray Nims, Dean Arnold, Bartlet Moss, Roscoe Brooks, Dana White, Clara Killoran, Max Hardwick, James O'Brien, Carl Nelson, Frank McKeown, Percy Wilcox, Stewart Maxey, Carey Harmon, John Hamilton, Paul Gowen, Nick Sullivan, Clarence Myrens and Norman Gillam.

**Idaho guests were:** Kenneth O'Neil, Louis Soderburg, Hal Bowen, Marshall Wilderman, Fred Auger, Earl McDonald, Horace Porter, Glen Wright, Elbert Stelmon, Allen Janssen, George Paulson, George Greene, Gus Bjork, Eldon Hatfield, Darwin Burchler, Jacob Coonrod, Ray Nims, Dean Arnold, Bartlet Moss, Roscoe Brooks, Dana White, Clara Killoran, Max Hardwick, James O'Brien, Carl Nelson, Frank McKeown, Percy Wilcox, Stewart Maxey, Carey Harmon, John Hamilton, Paul Gowen, Nick Sullivan, Clarence Myrens and Norman Gillam.

**Idaho guests were:** Kenneth O'Neil, Louis Soderburg, Hal Bowen, Marshall Wilderman, Fred Auger, Earl McDonald, Horace Porter, Glen Wright, Elbert Stelmon, Allen Janssen, George Paulson, George Greene, Gus Bjork, Eldon Hatfield, Darwin Burchler, Jacob Coonrod, Ray Nims, Dean Arnold, Bartlet Moss, Roscoe Brooks, Dana White, Clara Killoran, Max Hardwick, James O'Brien, Carl Nelson, Frank McKeown, Percy Wilcox, Stewart Maxey, Carey Harmon, John Hamilton, Paul Gowen, Nick Sullivan, Clarence Myrens and Norman Gillam.

**Idaho guests were:** Kenneth O'Neil, Louis Soderburg, Hal Bowen, Marshall Wilderman, Fred Auger, Earl McDonald, Horace Porter, Glen Wright, Elbert Stelmon, Allen Janssen, George Paulson, George Greene, Gus Bjork, Eldon Hatfield, Darwin Burchler, Jacob Coonrod, Ray Nims, Dean Arnold, Bartlet Moss, Roscoe Brooks, Dana White, Clara Killoran, Max Hardwick, James O'Brien, Carl Nelson, Frank McKeown, Percy Wilcox, Stewart Maxey, Carey Harmon, John Hamilton, Paul Gowen, Nick Sullivan, Clarence Myrens and Norman Gillam.

**Idaho guests were:** Kenneth O'Neil, Louis Soderburg, Hal Bowen, Marshall Wilderman, Fred Auger, Earl McDonald, Horace Porter, Glen Wright, Elbert Stelmon, Allen Janssen, George Paulson, George Greene, Gus Bjork, Eldon Hatfield, Darwin Burchler, Jacob Coonrod, Ray Nims, Dean Arnold, Bartlet Moss, Roscoe Brooks, Dana White, Clara Killoran, Max Hardwick, James O'Brien, Carl Nelson, Frank McKeown, Percy Wilcox, Stewart Maxey, Carey Harmon, John Hamilton, Paul Gowen, Nick Sullivan, Clarence Myrens and Norman Gillam.

**Idaho guests were:** Kenneth O'Neil, Louis Soderburg, Hal Bowen, Marshall Wilderman, Fred Auger, Earl McDonald, Horace Porter, Glen Wright, Elbert Stelmon, Allen Janssen, George Paulson, George Greene, Gus Bjork, Eldon Hatfield, Darwin Burchler, Jacob Coonrod, Ray Nims, Dean Arnold, Bartlet Moss, Roscoe Brooks, Dana White, Clara Killoran, Max Hardwick, James O'Brien, Carl Nelson, Frank McKeown, Percy Wilcox, Stewart Maxey, Carey Harmon, John Hamilton, Paul Gowen, Nick Sullivan, Clarence Myrens and Norman Gillam.

**Idaho guests were:** Kenneth O'Neil, Louis Soderburg, Hal Bowen, Marshall Wilderman, Fred Auger, Earl McDonald, Horace Porter, Glen Wright, Elbert Stelmon, Allen Janssen, George Paulson, George Greene, Gus Bjork, Eldon Hatfield, Darwin Burchler, Jacob Coonrod, Ray Nims, Dean Arnold, Bartlet Moss, Roscoe Brooks, Dana White, Clara Killoran, Max Hardwick, James O'Brien, Carl Nelson, Frank McKeown, Percy Wilcox, Stewart Maxey, Carey Harmon, John Hamilton, Paul Gowen, Nick Sullivan, Clarence Myrens and Norman Gillam.

**J.C. PENNEY CO.**  
A NATION-WIDE INSTITUTION  
"where savings are greatest"

**De Luxe Special Spring Suits**

Expertly tailored from attractively toned Heather Twist De Luxe fabrics. Patterns that are created exclusively for our Stores. In the Three-button Collegiate model as pictured; also the Two-Button Dorset model. Very moderately priced at—

**\$29.75**

Extra Pants if Desired, \$6.90

Quality tailoring; de Luxe rayon lined; inside bellows patch pockets; sleeves and vest back lined to match; trousers have quarter top pockets. A most exceptional value in Men's Clothing.

Boerne, Texas Oct. 14, 1926

Larus & Bro. Co. Richmond, Va.

I am a prodigal son. I began pipe-smoking with Edgeworth. But after a while I began to wander, trying other tobaccos, experimenting to see if there were any better tobacco for the pipe.

I have tried most of the best known brands and a number of the more obscure, both imported and domestic, but they didn't suit.

So now I have returned—I am using Edgeworth again, satisfied that no better tobacco is made.

"And the prodigal son partook of the fattest calf!" I bought a new pipe when I returned to Edgeworth.

With many thanks for my cool, melow, sweet smoke, I am,

Very truly yours,  
"H. D."

Menette, Lewiston; Grant Hagelund and Donald Bennett, Spokane; Josh Boyd and Bruce Hague, Kellogg; Hyde Morrison, Pullman; and William Holden, Seattle.

Week end guests of Alpha Chi Omega were Jack Kennedy, Idaho Lipps, Maude Kneer, Melba Knifong, Esther Donnellan, Burnett Grimes, Annabelle Nero and Evelyn Hanson.

Fynette Guthrie and Alice Waldrop were Sunday dinner guests at the Kappa Alpha Theta house.

Kappa Alpha Theta announces the initiation of Thelma Melgard.

(Continued on page 4.)

**DID YOU EVER INVESTIGATE!**

The prices you have to pay at different places and then compare the quality of the goods and service?

If you have you will stay with

**The Varsity Grocery & Cafe**  
(OF COURSE)

**Edgeworth**  
Extra High Grade Smoking Tobacco

**For Mother's Day**

A new portrait of you would make her happy.

**Mother's Day is May 13**

Make an appointment early  
**THE MIKLOS STUDIO**

Dial 3476 217 E. 3rd

**Commerce, too, has its Raleighs**

**RALEIGH'S** definition of courtesy was apparently to care for the needs of the other person. Today the same practice is observed by the telephone business; but we call it service.

To men in telephone work, service is a matter of looking ahead and preparing ahead—and when a need arises, to be ready. This point of view inspires the research engineer, the supervisor of production, the director of personnel and the executive responsible for all these activities and more.

With the increasing telephone requirements of the nation, this is a work of increasing complexity.

Through years to come Bell System men will find an even greater opportunity of service.

**BELL SYSTEM**  
A nation-wide system of 18,500,000 inter-connecting telephones

OUR PIONEERING WORK HAS JUST BEGUN

**CLOTHES**  
Ready-made And Cut to Order

ESTABLISHED ENGLISH UNIVERSITY STYLES, TAILORED OVER YOUTHFUL CHARTS SOLELY FOR DISTINGUISHED SERVICE IN THE UNITED STATES.

**Charter House**  
Suits \$40, \$45, \$50 Topcoats

**MOVED!**

To the office formerly occupied by the Western Union Telegraph Co., on 4th street, back of the Idaho Barber Shop. Catch our cars there for that 10c ride up the hill.

**Phone 3131**  
GRAY LINE CAB CO.  
CRUVERS

**BY SPECIAL APPOINTMENT OUR STORE IS THE**

**Charter House**

The character of the suits and topcoats tailored by Charter House will earn your most sincere liking

**DAVIDS'**



### VANDALS TROUNCE GONZAGA 2 TO 1 IN FIRST OF SERIES

Score in Second and Third Innings to Defeat Bulldogs Monday

### SECOND GAME TODAY

Visitors Get Only Tally in Sixth Following Zender's Long Hit

Scoring in the second and third innings of the first game of a two-game series here Monday afternoon, Idaho defeated Gonzaga 2 to 1. The Gonzaga run came in the sixth inning when Zender, center fielder, smacked out the only long hit of the game, making three bases on it and coming home on Mitchell's high fly to center.

Idaho showed across a tally in the second on three walks and a sacrifice. Homing drive a walk, Sullivan sacrificed him to second, Richardson got a base on balls and Cheyne got a free base when Charles Ralls, Gonzaga pitcher, continued to go wild. Homing scored when Jovick muffed the peg of Jacoby's grounder to short. The second run was a result of an error at short after McMillin had walked and Jovick muffed another peg to first base.

Everett Richardson, on the mound for Idaho, pitched steady ball, allowing but four scattered hits, striking out seven and walking none. Although the first two men up in the eighth inning got bingles, Richardson tightened up and struck out two to retire the side, after the third man up had filled out.

Ralls, Gonzaga twirler, allowed three hits and struck out nine. Ragged support lost him the game.

Box score:

IDAHO	A. B.	R.	H.	E.
Cheyne, ss	3	0	1	0
Jacoby, 3b	4	0	0	0
Green, 2b	4	0	0	0
McMillin, 1b	4	1	1	0
Price, lf	4	0	0	0
Ficker, cf	3	0	0	0
Hollins, rf	3	1	0	0
Sullivan, c	3	0	1	1
Richardson, p	3	0	0	0
<b>GONZAGA</b>	<b>35</b>	<b>2</b>	<b>3</b>	<b>1</b>
Mitchell, 2b	4	0	1	2
E. Jovick, 1b	4	0	0	3
Pedofini, rf	4	0	1	0
Rotchford, ss	4	0	1	0
W. Jovick, lf	4	0	0	0
Ralls, c	3	0	0	1
Mertes, p	3	0	0	2
Zender, cf	3	1	1	0
Smith, 3b	3	0	0	0
<b>R.</b>	<b>32</b>	<b>1</b>	<b>4</b>	<b>7</b>
<b>H.</b>	<b>3</b>	<b>1</b>	<b>1</b>	<b>1</b>
<b>E.</b>	<b>1</b>	<b>4</b>	<b>7</b>	<b>1</b>
Idaho	2	3	1	1
Gonzaga	1	4	1	0

Umpire: Dutch Aultman, Spokane.

POSITIONS SECURED FOR SENIORS FOR NEXT YEAR

(Continued from page 1)

mathematics, Kellogg high school, Idaho.
Mildred Perry, '28, commercial, Kellogg high school.
Marjorie Mc Naughton, '29, seventh grade, Kellogg schools.
Mary Largent, science, Kellogg high school.
Howard McQuig, '24, superintendent of schools, Deary, Idaho.
C. C. Lane, '27, superintendent of schools, Winchester, Idaho.
Glarence Meakin, '28, superintendent of schools, Homedale, Idaho.
John Miles, '27, coach and instructor, Mullan high school.
Herbert Wunderlich, Lewis and Clark high school, Spokane.
Barbara Rugg, commercial and girls physical education, Filer, Idaho.
Maddell West, English and public speaking, Filer, Idaho.
James Allen, English and dramatics, Wallace, Idaho.
Raymond Harris, '30, music and fifth grade, Kamiah, Idaho.

Marguerite Finch, ex-'29, grade work, Filer, Idaho.

Phyllis Palmer, music, Malad, Idaho.

Josephine Keane, girls physical education, Wallace, Idaho.

Belma Morgan, '28, commercial, Malad, Idaho.

Herbert Luscombe, '28, history, Genesee, Idaho.

William Riddle, science and coach, Genesee, Idaho.

Louise Martin, '25, English, Cottonwood, Idaho.

Charles E. Cone, '24, superintendent of schools, Harrison, Idaho.

Leonard Gardner, '28, manual training and history, Rosalia.

Norman Johnson, '28, mathematics, science and coaching, Council, Idaho.

George Jones, '30, eighth grade, Peck, Idaho.

Charles Jungstrom, science and mathematics, Bliss, Idaho.

Mary Isabel Vassar, '26, English, Genesee, Idaho.

Sarah Trousdale, '26, English, Moscow.

Bernice Bjornson, '27, science, Moscow.

Loren Messenger, '26, State Normal School, Ashland, Ore.

Ada Gregory, '28, State Normal School, Dillon, Mont.

Dwight Disney, '28, Albion Normal school, summer session, and superintendent of schools, Fordman, Idaho.

Vivian Beardmore, '27, music, Idaho.

Frank E. Deveney, history, Orofino, Idaho.

Murva Murray, '28, history and music, general science, New Meadows, Idaho.

Opal Thompson, Latin, Emmett, Idaho.

Margaret Kibyon, '27, history and English, Emmett, Idaho.

Laverne Pond, '28, English, Grace, Idaho.

Nellie Burrall, '28, home economics, Grace, Idaho.

Lillian Helgkney, '30, grade school work, Buhl, Idaho.

Dellah Budrow, '28, Winchester, Idaho.

Ina L. Pitt, grade principal, Idaho City, Idaho.

### IDAHO POINTS FOR TRIANGULAR MEET

Vandals Look Good to Win Track Contest at Spokane Saturday

Aided by fair weather and cheered by prospects of a dry, warm field at Spokane Saturday afternoon, Idaho's tentative varsity track squad of 25 men is hibernating on the final week of practice before the annual triangular meet at the Gonzaga stadium, April 28. The meet was originally slated as a quadrangular but Montana university withdrew last week when a snow storm hopelessly retarded her cinder men. The three school's remaining in the meet are Idaho, W. S. C. and Gonzaga.

Idaho's strongest showing will probably be in the distances, shot put, hurdles and high jump. Captain Don Cleaver has taken the mile and two mile events for the past two years and should rake in two more firsts Saturday afternoon. Kershank and Collins are heading the shot well within striking distance of a first place, and both men will probably place in the discus toss. Jack Mitchell, two-letter man, is one of the best hurdlers in the Pacific coast conference and, although he has had little practice this spring, should be leading the field in both high and low sticks against Gonzaga and W. S. C. He will be backed up by Jimmie Griffith and Verne Mason, both experienced men.

**O'Brien May Jump**

Vandal chances in the high jump will be materially increased if Jimmie O'Brien is able to enter the meet. Two weeks ago O'Brien twisted a knee and has been unable to work out. Before the injury he was clearing six feet and should be in shape Saturday—he will undoubtedly be among the first three placers in his event.

Harold Stowell, a sophomore, is also doing well in the high jump and Bill Galt another second year man, will be entered in that event also.

Assistant Fred Stanton, the Gonzaga

440-yard dash. Captain William C. Bryan, Idaho track coach, will place Wilfred Johnson, John Norman and Art Klingler. All three men are fast and have had experience in the quarter. Both Norman and Klingler have earned letters and Johnson was a member of the Idaho relay team last spring.

**Six in Sprints**

In the sprints Coach Bryan has six men of almost equal speed. Norman Stowell, Klingler, Calvert, Jensen, and Johnson run the hundred with not more than four feet between the leading man and the finisher. Norman has an edge of about a yard over the field; however, and will be Idaho's best bet to beat Wesley Foster, Washington State's negro sprint star.

The following men make up the tentative squad that will represent Idaho in the meet:

Distance men: Cleaver, Taggart, Engel, Wicks. Sprints: Norman, Klingler, Johnson, Jensen, Calvert, Half mile: Stowell, Hawkins. Hurdles: Mitchell, Mason, Thornhill, Griffith. High jump: O'Brien, Gale. Weights: Kershank, Collins, Moore, Thomas, Baicher. Pole vault: Peterson, Yrizar and Huggins.

**FORMER STUDENTS WED IN ARIZONA**

Grace Hagen, ex-'27, and Edwin Poulson, '26, married at Phoenix; Were Well Known Here

Announcements have been received here of the marriage of Grace Hagen, ex-'27, to Edwin N. Poulson, '26, at Phoenix, Ariz., on April 12. The bride was well known in campus activities three years ago. She is a member of Pi Sigma Rho sorority.

Mr. Poulson graduated from Idaho in 1925 with a bachelor of science degree in agronomy and received his master's degree the next year. He is a member of Sigma Alpha Epsilon and of Sigma Xi, national scientific fraternity. He is a research agronomist with the United States bureau of soils and chemistry and is at present stationed at the Phoenix, Ariz., office of the bureau.

The couple plan to leave soon on an extensive honeymoon trip through the Grand Canyon and through southern California.

**TWO HUNDRED WILL BE HERE FOR MUSIC CONTEST**

(Continued from page 1)

stay during the contest:

Gamma Phi Beta: Audrey Aurhart, Beverly Admonds, Caroline Schmidt, Margaret Gankl, Wilma Wofford and Portia Glanderman; Coeur d'Alene.

Pi Beta Phi: Adeline Marineau, Esther Southard, Marjorie Stucker, Margaret Schomaker, Coeur d'Alene; Helen Timbrook and Arlee Sherman, Mullan.

Alpha Chi Omega: Miss Thompson, Miss Snook, Post Falls; Mary Lyons, Kellogg; Lucille Frizell, Mabelle Blunt and Mary Addington, Lewiston.

Kappa Alpha Theta: Donna Rogers, Harry Shuttler and Leroy Long were luncheon guests of Sigma Alpha Epsilon Friday.

Dorothy Veris was a dinner guest of Kappa Alpha Theta Friday evening.

Mr. and Mrs. Eugene Bladock and son and Harold Ruddle, Lewiston, were dinner guests of Phi Delta Theta Sunday.

"Andy" Anderson was a luncheon guest of Phi Delta Theta Monday.

Mrs. Russell T. Scott and Jay Taggart were Thursday evening dinner guests of Beta Theta Pi.

Bruce Hague and Joshua Boyd of Kellogg were Saturday noon luncheon guests of Beta Theta Pi.

Mrs. Russell T. Scott, Daphne Gowen and Lynn Johnson were Sunday dinner guests of Beta Theta Pi.

Charles Darling was a week end guest of Beta Theta Pi.

Robert Meadows was a Sunday dinner guest of Delta Chi.

Forney hall dinner guests Sunday were Dean and Mrs. J. F. Messenger, Dr. and Mrs. R. D. Russell, Mr. and Mrs. Nelson, Marjorie Bloom and Catherine West.

Hays hall dinner guests Sunday were Miss Isabel Clark, Ruth Rowell, Elvira Mink and Mr. and Mrs. E. P. Violet Schroeder was a Hays hall dinner guest Saturday.

Sigma Chi announces the pledging of Charles Herndon, Salmon.

Carmen Rogers, Marjorie Rinker and Alice Lemen of Pullman were

Marilyn Furlington, Rathdrum; Miss Bloom, Elk River; Evodie Johnson, St. Maries; Elaine Scott, Reubens, Delta Gamma; Miss Merriam, Wallace; Verona Wolff, Frances Smyley, Genesee; Lois Nichols and Esie Riggers, Clifford.

**Six At Pi Sig House**

Pi Sigma Rho: Phyllis Buckley, Pocatello; Mary McCabe, Pocatello; Blanche Davis, Wanda Parrott, and Beulah Leeper, Gifford; and Bernice Hubbard, Lewiston.

Omega Alpha: Margaret Hamilton, Margaret Jamison, Kathleen McFarlane, Nampa; Gunvor Northus, Marion Fry, Bonners Ferry; Audrey Anderson, Sandpoint.

Kappa Kappa Gamma: Harriett Evans, Helen Nelson, Edith Hadley, Norma Sanders, Irene Smith and Dorothy Evans, Sandpoint.

**Fifty at Halls**

Hays and Forney halls will together house the remaining 50 girls.

Beta Theta Pi: Frederick Gunder, Elmer James and Everett Coonstadt, Coeur d'Alene.

Tau Kappa Epsilon: Kenneth Curtis, Harry Ready, York Kliden and Sam Stone, Coeur d'Alene.

Phi Gamma Delta: William Puchner, Harry Fish and Kenneth Thomas, St. Maries; Dana Cleveland, Gifford.

Lambda Chi Alpha: Lawrence Meguire, Bonners Ferry; Edwin Carlson, and George Allen, Nampa; Reginald Lyons, Kellogg.

Delta Chi: Owen Carter, Late Grant, Gifford; Thurston Sotrey and Otis Taylor, Lapwai.

Kappa Sigma: Richard Hassinger, George Graves, Vernon Wicks, and Roy Summers, Gifford.

Sigma Alpha Epsilon: Four boys from the Gifford band whose names have not been announced.

Sigma Nu Drums Share

Sigma Nu: Sydney Walden, Bonners Ferry; Virgil McCracken, Cecil McCracken and Don Cleveland, Gifford.

Alpha Tau Omega: Four boys from Lewiston whose names have not been announced.

Sigma Chi: Four boys from Coeur d'Alene whose names have not been announced.

Alpha Tau Omega Annex: Four boys from Coeur d'Alene whose names have not been announced.

Phi Delta Theta: Otto Rigers, Gifford and three boys from St. Maries.

Beta Chi: Gibson Walters and Runtton Barlow, Pocatello; Arthur Klevins, Genesee; Oliver Shrivast, Mullan.

Alpha Chi Omega: Miss Thompson, Miss Snook, Post Falls; Mary Lyons, Kellogg; Lucille Frizell, Mabelle Blunt and Mary Addington, Lewiston.

Kappa Alpha Theta: Donna Rogers, Harry Shuttler and Leroy Long were luncheon guests of Sigma Alpha Epsilon Friday.

Dorothy Veris was a dinner guest of Kappa Alpha Theta Friday evening.

Mr. and Mrs. Eugene Bladock and son and Harold Ruddle, Lewiston, were dinner guests of Phi Delta Theta Sunday.

"Andy" Anderson was a luncheon guest of Phi Delta Theta Monday.

Mrs. Russell T. Scott and Jay Taggart were Thursday evening dinner guests of Beta Theta Pi.

Bruce Hague and Joshua Boyd of Kellogg were Saturday noon luncheon guests of Beta Theta Pi.

Mrs. Russell T. Scott, Daphne Gowen and Lynn Johnson were Sunday dinner guests of Beta Theta Pi.

Charles Darling was a week end guest of Beta Theta Pi.

Robert Meadows was a Sunday dinner guest of Delta Chi.

Forney hall dinner guests Sunday were Dean and Mrs. J. F. Messenger, Dr. and Mrs. R. D. Russell, Mr. and Mrs. Nelson, Marjorie Bloom and Catherine West.

Hays hall dinner guests Sunday were Miss Isabel Clark, Ruth Rowell, Elvira Mink and Mr. and Mrs. E. P. Violet Schroeder was a Hays hall dinner guest Saturday.

Sigma Chi announces the pledging of Charles Herndon, Salmon.

Carmen Rogers, Marjorie Rinker and Alice Lemen of Pullman were

over night guests of Pi Sigma Rho Friday.

Albert Neighbor was a Sunday dinner guest of Sigma Chi.

Sarah Allison and Grace Eldridge were Friday dinner guests of Pi Sigma Rho.

Edward Rogel of Washington State college was a week end guest, at the Delta Chi house.

Helen Jensen was a Sunday dinner guest of Pi Sigma Rho.

Mrs. F. W. Callaway, Kellogg, was guest of Kappa Sigma.

a week end guest of Kappa Kappa Gamma.

Mrs. F. R. Lafferty, Spokane, was a week end guest of Kappa Kappa Gamma.

Dinner guests of Kappa Kappa Gamma Sunday were Mrs. Cowgill, Spokane, Lynn Cowgill and William Callaway.

Miss Katherine Hahn, Lewiston, was a guest of Kappa Kappa Gamma last week end.

Wayman Williams was a week end

Always at Your Service

## FIRST TRUST AND SAVINGS BANK

Moscow, Idaho

LARGEST BANK IN LATAH COUNTY



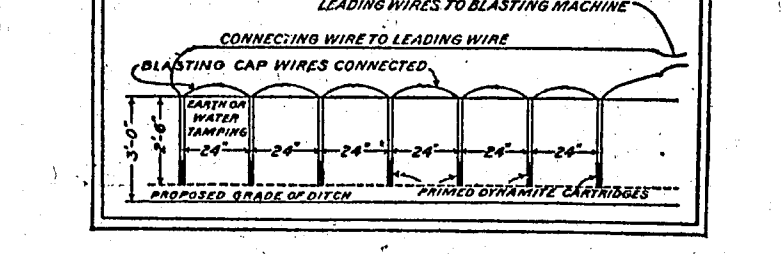
(Continued from page 3.)

If you can't be with your mother on her day—send her the one gift that will make her happy—Your Photograph—

**STERNER PHOTO STUDIO**

521 S. Main Dial 4931

## Ditching and Drainage



### LESSON NUMBER 11 OF THE BLASTERS' HANDBOOK

THE economic advantages of blasting ditches with dynamite warrant obtaining a practical understanding of the methods commonly used. Blasting ditches cost less; the soil is evenly distributed on either side of the ditch; no spoil banks are created because the explosive distributes the earth and makes the ditch where required; no expensive machinery to locate and operate; there are no overhead expenses for equipment; ditches can be dug with dynamite where the conditions are too difficult for other methods, and, finally, the process is so simple.

Do you understand the propagation method of ditch blasting? Do you know the proper way to load, the amount of charges, the kind of explosives to use for each kind of ditch?

All these questions are completely and practically answered in the Blasters' Handbook. There are tables of charges, plans for loading, cross-section views, and concise instructions for every step. Here is information seldom given in the average text-book—the "boiled-down" experience of field men skilled in the use of explosives for every purpose.

The Blasters' Handbook is yours, without cost, by merely mailing this coupon

**DU PONT**

REG. U. S. PAT. OFF.

E. I. DU PONT DE NEMOURS & CO., Inc.  
Explosives Dept., Wilmington, Del. 1A4A

Gentlemen:

Please send me a copy of your "Blasters' Handbook."

Name.....

Address.....

over night guests of Pi Sigma Rho Friday.

Albert Neighbor was a Sunday dinner guest of Sigma Chi.

Sarah Allison and Grace Eldridge were Friday dinner guests of Pi Sigma Rho.

Edward Rogel of Washington State college was a week end guest, at the Delta Chi house.

Helen Jensen was a Sunday dinner guest of Pi Sigma Rho.

Mrs. F. W. Callaway, Kellogg, was guest of Kappa Sigma.

a week end guest of Kappa Kappa Gamma.

Mrs. F. R. Lafferty, Spokane, was a week end guest of Kappa Kappa Gamma.

Dinner guests of Kappa Kappa Gamma Sunday were Mrs. Cowgill, Spokane, Lynn Cowgill and William Callaway.

Miss Katherine Hahn, Lewiston, was a guest of Kappa Kappa Gamma last week end.

Wayman Williams was a week end

over night guests of Pi Sigma Rho Friday.

Albert Neighbor was a Sunday dinner guest of Sigma Chi.

Sarah Allison and Grace Eldridge were Friday dinner guests of Pi Sigma Rho.

Edward Rogel of Washington State college was a week end guest, at the Delta Chi house.

Helen Jensen was a Sunday dinner guest of Pi Sigma Rho.

Mrs. F. W. Callaway, Kellogg, was guest of Kappa Sigma.

a week end guest of Kappa Kappa Gamma.

Mrs. F. R. Lafferty, Spokane, was a week end guest of Kappa Kappa Gamma.

Dinner guests of Kappa Kappa Gamma Sunday were Mrs. Cowgill, Spokane, Lynn Cowgill and William Callaway.

Miss Katherine Hahn, Lewiston, was a guest of Kappa Kappa Gamma last week end.

Wayman Williams was a week end

over night guests of Pi Sigma Rho Friday.

Albert Neighbor was a Sunday dinner guest of Sigma Chi.

Sarah Allison and Grace Eldridge were Friday dinner guests of Pi Sigma Rho.

Edward Rogel of Washington State college was a week end guest, at the Delta Chi house.

Helen Jensen was a Sunday dinner guest of Pi Sigma Rho.

Mrs. F. W. Callaway, Kellogg, was guest of Kappa Sigma.

a week end guest of Kappa Kappa Gamma.

Mrs. F. R. Lafferty, Spokane, was a week end guest of Kappa Kappa Gamma.

Dinner guests of Kappa Kappa Gamma Sunday were Mrs. Cowgill, Spokane, Lynn Cowgill and William Callaway.

Miss Katherine Hahn, Lewiston, was a guest of Kappa Kappa Gamma last week end.

Wayman Williams was a week end

over night guests of Pi Sigma Rho Friday.

Albert Neighbor was a Sunday dinner guest of Sigma Chi.

Sarah Allison and Grace Eldridge were Friday dinner guests of Pi Sigma Rho.

Edward Rogel of Washington State college was a week end guest, at the Delta Chi house.

Helen Jensen was a Sunday dinner guest of Pi Sigma Rho.

Mrs. F. W. Callaway, Kellogg, was guest of Kappa Sigma.

a week end guest of Kappa Kappa Gamma.

Mrs. F. R. Lafferty, Spokane, was a week end guest of Kappa Kappa Gamma.

Dinner guests of Kappa Kappa Gamma Sunday were Mrs. Cowgill, Spokane, Lynn Cowgill and William Callaway.

Miss Katherine Hahn, Lewiston, was a guest of Kappa Kappa Gamma last week end.

Wayman Williams was a week end

over night guests of Pi Sigma Rho Friday.

Albert Neighbor was a Sunday dinner guest of Sigma Chi.

Sarah Allison and Grace Eldridge were Friday dinner guests of Pi Sigma Rho.

Edward Rogel of Washington State college was a week end guest, at the Delta Chi house.

Helen Jensen was a Sunday dinner guest of Pi Sigma Rho.

Mrs. F. W. Callaway, Kellogg, was guest of Kappa Sigma.

a week end guest of Kappa Kappa Gamma.

Mrs. F. R. Lafferty, Spokane, was a week end guest of Kappa Kappa Gamma.

Dinner guests of Kappa Kappa Gamma Sunday were Mrs. Cowgill, Spokane, Lynn Cowgill and William Callaway.

Miss Katherine Hahn, Lewiston, was a guest of Kappa Kappa Gamma last week end.

Wayman Williams was a week end

over night guests of Pi Sigma Rho Friday.

Albert Neighbor was a Sunday dinner guest of Sigma Chi.

Sarah Allison and Grace Eldridge were Friday dinner guests of Pi Sigma Rho.

Edward Rogel of Washington State college was a week end guest, at the Delta Chi house.

Helen Jensen was a Sunday dinner guest of Pi Sigma Rho.

Mrs. F. W. Callaway, Kellogg, was guest of Kappa Sigma.

a week end guest of Kappa Kappa Gamma.

Mrs. F. R. Lafferty, Spokane, was a week end guest of Kappa Kappa Gamma.

Dinner guests of Kappa Kappa Gamma Sunday were Mrs. Cowgill, Spokane, Lynn Cowgill and William Callaway.

Miss Katherine Hahn, Lewiston, was a guest of Kappa Kappa Gamma last week end.

Wayman Williams was a week end

over night guests of Pi Sigma Rho Friday.

Albert Neighbor was a Sunday dinner guest of Sigma Chi.

Sarah Allison and Grace Eldridge were Friday dinner guests of Pi Sigma Rho.

Edward Rogel of Washington State college was a week end guest, at the Delta Chi house.

Helen Jensen was a Sunday dinner guest of Pi Sigma Rho.

Mrs. F. W. Callaway, Kellogg, was guest of Kappa Sigma.

a week end guest of Kappa Kappa Gamma.

Mrs. F. R. Lafferty, Spokane, was a week end guest of Kappa Kappa Gamma.

Dinner guests of Kappa Kappa Gamma Sunday were Mrs. Cowgill, Spokane, Lynn Cowgill and William Callaway.

Miss Katherine Hahn, Lewiston, was a guest of Kappa Kappa Gamma last week end.

Wayman Williams was a week end

over night guests of Pi Sigma Rho Friday.

Albert Neighbor was a Sunday dinner guest of Sigma Chi.

Sarah Allison and Grace Eldridge were Friday dinner guests of Pi Sigma Rho.

Edward Rogel of Washington State college was a week end guest, at the Delta Chi house.

Helen Jensen was a Sunday dinner guest of Pi Sigma Rho.

Mrs. F. W. Callaway, Kellogg, was guest of Kappa Sigma.

a week end guest of Kappa Kappa Gamma.

Mrs. F. R. Lafferty, Spokane, was a week end guest of Kappa Kappa Gamma.

Dinner guests of Kappa Kappa Gamma Sunday were Mrs. Cowgill, Spokane, Lynn Cowgill and William Callaway.

Miss Katherine Hahn, Lewiston, was a guest of Kappa Kappa Gamma last week end.

Wayman Williams was a week end

over night guests of Pi Sigma Rho Friday.

Albert Neighbor was a Sunday dinner guest of Sigma Chi.

Sarah Allison and Grace Eldridge were Friday dinner guests of Pi Sigma Rho.

Edward Rogel of Washington State college was a week end guest, at the Delta Chi house.

Helen Jensen was a Sunday dinner guest of Pi Sigma Rho.

Mrs. F. W. Callaway, Kellogg, was guest of Kappa Sigma.

a week end guest of Kappa Kappa Gamma.

Mrs. F. R. Lafferty, Spokane, was a week end guest of Kappa Kappa Gamma.

Dinner guests of Kappa Kappa Gamma Sunday were Mrs. Cowgill, Spokane, Lynn Cowgill and William Callaway.

Miss Katherine Hahn, Lewiston, was a guest of Kappa Kappa Gamma last week end.

Wayman Williams was a week end

over night guests of Pi Sigma Rho Friday.

Albert Neighbor was a Sunday dinner guest of Sigma Chi.

Sarah Allison and Grace Eldridge were Friday dinner guests of Pi Sigma Rho.

Edward Rogel of Washington State college was a week end guest, at the Delta Chi house.

Helen Jensen was a Sunday dinner guest of Pi Sigma Rho.

Mrs. F. W. Callaway, Kellogg, was guest of Kappa Sigma.

a week end guest of Kappa Kappa Gamma.

Mrs. F. R. Lafferty, Spokane, was a week end guest of Kappa Kappa Gamma.

Dinner guests of Kappa Kappa Gamma Sunday were Mrs. Cowgill, Spokane, Lynn Cowgill and William Callaway.

Miss Katherine Hahn, Lewiston, was a guest of Kappa Kappa Gamma last week end.

Wayman Williams was a week end

over night guests of Pi Sigma Rho Friday.

Albert Neighbor was a Sunday dinner guest of Sigma Chi.

Sarah Allison and Grace Eldridge were Friday dinner guests of Pi Sigma Rho.

Edward Rogel of Washington State college was a week end guest, at the Delta Chi house.

Helen Jensen was a Sunday dinner guest of Pi Sigma Rho.

Mrs. F. W. Callaway, Kellogg, was guest of Kappa Sigma.

a week end guest of Kappa Kappa Gamma.

Mrs. F. R. Lafferty, Spokane, was a week end guest of Kappa Kappa Gamma.

Dinner guests of Kappa Kappa Gamma Sunday were Mrs. Cowgill, Spokane, Lynn Cowgill and William Callaway.

Miss Katherine Hahn, Lewiston, was a guest of Kappa Kappa Gamma last week end.

Wayman Williams was a week end

over night guests of Pi Sigma Rho Friday.

Albert Neighbor was a Sunday dinner guest of Sigma Chi.

Sarah Allison and Grace Eldridge were Friday dinner guests of Pi Sigma Rho.

Edward Rogel of Washington State college was a week end guest, at the Delta Chi house.

Helen Jensen was a Sunday dinner guest of Pi Sigma Rho.

Mrs. F. W. Callaway, Kellogg, was guest of Kappa Sigma.

a week end guest of Kappa Kappa Gamma.

Mrs. F. R. Lafferty, Spokane, was a week end guest of Kappa Kappa Gamma.

Dinner guests of Kappa Kappa Gamma Sunday were Mrs. Cowgill, Spokane, Lynn Cowgill and William Callaway.

Miss Katherine Hahn, Lewiston, was a guest of Kappa Kappa Gamma last week end.

Wayman Williams was a week end

over night guests of Pi Sigma Rho Friday.

Albert Neighbor was a Sunday dinner guest of Sigma Chi.

Sarah Allison and Grace Eldridge were Friday dinner guests of Pi Sigma Rho.

Edward Rogel of Washington State college was a week end guest, at the Delta Chi house.

Helen Jensen was a Sunday dinner guest of Pi Sigma Rho.

Mrs. F. W. Callaway, Kellogg, was guest of Kappa Sigma.

a week end guest of Kappa Kappa Gamma.

Mrs. F. R. Lafferty, Spokane, was a week end guest of Kappa Kappa Gamma.

Dinner guests of Kappa Kappa Gamma Sunday were Mrs. Cowgill, Spokane, Lynn Cowgill and William Callaway.

Miss Katherine Hahn, Lewiston, was a guest of Kappa Kappa Gamma last week end.

Wayman Williams was a week end

over night guests of Pi Sigma Rho Friday.

Albert Neighbor was a Sunday dinner guest of Sigma Chi.

Sarah Allison and Grace Eldridge were Friday dinner guests of Pi Sigma Rho.

Edward Rogel of Washington State college was a week end guest, at the Delta Chi house.

Helen Jensen was a Sunday dinner guest of Pi Sigma Rho.

Mrs. F. W. Callaway, Kellogg, was guest of Kappa Sigma.

a week end guest of Kappa Kappa Gamma.

Mrs. F. R. Lafferty, Spokane, was a week end guest of Kappa Kappa Gamma.

Dinner guests of Kappa Kappa Gamma Sunday were Mrs. Cowgill, Spokane, Lynn Cowgill and William Callaway.

Miss Katherine Hahn, Lewiston, was a guest of Kappa Kappa Gamma last week end.

Wayman Williams was a week end

over night guests of Pi Sigma Rho Friday.

Albert Neighbor was a Sunday dinner guest of Sigma Chi.

Sarah Allison and Grace Eldridge were Friday dinner guests of Pi Sigma Rho.

Edward Rogel of Washington State college was a week end guest, at the Delta Chi house.

Helen Jensen was a Sunday dinner guest of Pi Sigma Rho.

Mrs. F. W. Callaway, Kellogg, was guest of Kappa Sigma.

a week end guest of Kappa Kappa Gamma.

Mrs. F. R. Lafferty, Spokane, was a week end guest of Kappa Kappa Gamma.

Dinner guests of Kappa Kappa Gamma Sunday were Mrs. Cowgill, Spokane, Lynn Cowgill and William Callaway.

Miss Katherine Hahn, Lewiston, was a guest of Kappa Kappa Gamma last week end.

Wayman Williams was a week end

over night guests of Pi Sigma Rho Friday.

Albert Neighbor was a Sunday dinner guest of Sigma Chi.

Sarah Allison and Grace Eldridge were Friday dinner guests of Pi Sigma Rho.

Edward Rogel of Washington State college was a week end guest, at the Delta Chi house.

Helen Jensen was a Sunday dinner guest of Pi Sigma Rho.

Mrs. F. W. Callaway, Kellogg, was guest of Kappa Sigma.

a week end guest of Kappa Kappa Gamma.

Mrs. F. R. Lafferty, Spokane, was a week end guest of Kappa Kappa Gamma.

Dinner guests of Kappa Kappa Gamma Sunday were Mrs. Cowgill, Spokane, Lynn Cowgill and William Callaway.

Miss Katherine Hahn, Lewiston, was a guest of Kappa Kappa Gamma last week end.

Wayman Williams was a week end

over night guests of Pi Sigma Rho Friday.

Albert Neighbor was a Sunday dinner guest of Sigma Chi.

Sarah Allison and Grace Eldridge were Friday dinner guests of Pi Sigma Rho.

Edward Rogel of Washington State college was a week end guest, at the Delta Chi house.

Helen Jensen was a Sunday dinner guest of Pi Sigma Rho.

Mrs. F. W. Callaway, Kellogg, was guest of Kappa Sigma.

a week end guest of Kappa Kappa Gamma.

Mrs. F. R. Lafferty, Spokane, was a week end guest of Kappa Kappa Gamma.

Dinner guests of Kappa Kappa Gamma Sunday were Mrs. Cowgill, Spokane, Lynn Cowgill and William Callaway.

Miss Katherine Hahn, Lewiston, was a guest of Kappa Kappa Gamma last week end.

Wayman Williams was a week end

over night guests of Pi Sigma Rho Friday.

Albert Neighbor was a Sunday dinner guest of Sigma Chi.

Sarah Allison and Grace Eldridge were Friday dinner guests of Pi Sigma Rho.

Edward Rogel of Washington State college was a week end guest, at the Delta Chi house.

Helen Jensen was a Sunday dinner guest of Pi Sigma Rho.

Mrs. F. W. Callaway, Kellogg, was guest of Kappa Sigma.

a week end guest of Kappa Kappa Gamma.

Mrs. F. R. Lafferty, Spokane, was a week end guest of Kappa Kappa Gamma.

Dinner guests of Kappa Kappa Gamma Sunday were Mrs. Cowgill, Spokane, Lynn Cowgill and William Callaway.

Miss Katherine Hahn, Lewiston, was a guest of Kappa Kappa Gamma last week end.

Wayman Williams was a week end

over night guests of Pi Sigma Rho Friday.

Albert Neighbor was a Sunday dinner guest of Sigma Chi.

Sarah Allison and Grace Eldridge were Friday dinner guests of Pi Sigma Rho.

Edward Rogel of Washington State college was a week end guest, at the Delta Chi house.

Helen Jensen was a Sunday dinner guest of Pi Sigma Rho.

Mrs. F. W. Callaway, Kellogg, was guest of Kappa Sigma.

a week end guest of Kappa Kappa Gamma.

Mrs. F. R. Lafferty, Spokane, was a week end guest of Kappa Kappa Gamma.

Dinner guests of Kappa Kappa Gamma Sunday were Mrs. Cowgill, Spokane, Lynn Cowgill and William Callaway.

Miss Katherine Hahn, Lewiston, was a guest of Kappa Kappa Gamma last week end.

Wayman Williams was a week end

over night guests of Pi Sigma Rho Friday.

Albert Neighbor was a Sunday dinner guest of Sigma Chi.

Sarah Allison and Grace Eldridge were Friday dinner guests of Pi Sigma Rho.

Edward Rogel of Washington State college was a week end guest, at the Delta Chi house.

Helen Jensen was a Sunday dinner guest of Pi Sigma Rho.

Mrs. F. W. Callaway, Kellogg, was guest of Kappa Sigma.

a week end guest of Kappa Kappa Gamma.

Mrs. F. R. Lafferty, Spokane, was a week end guest of Kappa Kappa Gamma.

Dinner guests of Kappa Kappa Gamma Sunday were Mrs. Cowgill, Spokane, Lynn Cowgill and William Callaway.

Miss Katherine Hahn, Lewiston, was a guest of Kappa Kappa Gamma last week end.

Wayman Williams was a week end

over night guests of Pi Sigma Rho Friday.

Albert Neighbor was a Sunday dinner guest of Sigma Chi.

Sarah Allison and Grace Eldridge were Friday dinner guests of Pi Sigma Rho.

Edward Rogel of Washington State college was a week end guest, at the Delta Chi house.

Helen Jensen was a Sunday dinner guest of Pi Sigma Rho.

Mrs. F. W. Callaway, Kellogg, was guest of Kappa Sigma.

a week end guest of Kappa Kappa Gamma.

Mrs. F. R. Lafferty, Spokane, was a week end guest of Kappa Kappa Gamma.

Dinner guests of Kappa Kappa Gamma Sunday were Mrs. Cowgill, Spokane, Lynn Cowgill and William Callaway.

Miss Katherine Hahn, Lewiston, was a guest of Kappa Kappa Gamma last week end.

Wayman Williams was a week end