

The Idaho Argonaut

Official publication of the Associated Students of the University of Idaho, issued every Tuesday and Friday of the college year. Entered as second class matter at the Postoffice at Moscow, Idaho, Member of Pacific Intercollegiate Press Association. Editorial and business office, room 202 Memorial gymnasium, phone 2207. Monday and Thursday nights, after 7 o'clock, Daily Star-Mirror office, phone 2222.

Richard Stanton
EDITOR

John Powell
MANAGER

Perry Culp, Jr.
MANAGING EDITOR

What Can We Do?

Tomorrow is our first home game. What that means to some students is not known; what it does mean to a few is presupposed; what it should mean to every loyal Idaho student interested in seeing the team revived in spirit after its game last week and off to a good start here tomorrow is evident.

Meeting Washington in our first game of the season is what might be termed a "poor schedule break." That's over; we're not alibing; the wounds from defeat have partially healed; the score has been forgotten; and we're ready to start anew tomorrow on our home field with a game which should not be tough in comparison with that of last Saturday.

With this in mind, it is our duty as students of the university and loyal supporters of its athletic teams to do all in our power to help the team get off to a better start which may carry them far in making a better average in the remaining scheduled games.

All this is just a roundabout way of saying "let's get out there tomorrow in full force and show the team and the coaches that we're behind them." Let's forget about one defeat. There are still seven games left in which we can show them that we're still on the football map.

The game may not be tough tomorrow; it probably won't be. But that's no reason why we should let down on our cheering which is the same as letting the team down.

A student body can do more than it realized in achieving an objective of cheering a coach and a team up.

Invitation to Alumni

You former Idaho students, both men and women, have seen the inside as well as the outside of university life. You have a much better perspective on student life in general, and particularly do you know the application of student experience to life after college. Your view point on the many university activities and on the campus happenings is much clearer. We who are in attendance today, of necessity, have a more narrow outlook. We are too close to the hustle and bustle of everyday occurrences, to be able to see them from all sides. Yet, we carry on the activities of the past, not being certain that our work is creditable to the university; usually not knowing how to improve our efforts, except by trial and error. Too, we often wonder how our work reacts on our alumni. To you we look for a broader guidance. We invite your serious cooperation.

The Argonaut has always served as an informative medium between the student body and the alumni—with student body news. This year, we wish to serve as a further link between these two important parts of the Greater University, by carrying constructive criticism, advice, and special commendation for the groups or individual activities which are especially worthy.

Alumni, we should like, at any time, for you to send your ideas and reactions to present Idaho campus life. The Argonaut columns are open to you. We are glad to accept and print all alumni articles subject to the discretion of the staff. This discretion at all times will be guided by that which tends to build an improved and Greater University of Idaho. May we hear from you?

Are We Surprised?

A recent issue of the College of Idaho school paper minced no words in one of its sports columns. In plain English it stated that Idaho was the little boy in the big game. That with one exception our material was not of the best, and in the vernacular that "we didn't have a prayer."

"Idaho Fights," is a phrase which has typified from its earliest history the spirit not only of the University of Idaho, but supposedly of the entire state. Everyone in touch with the athletic situation at present realizes that Idaho is facing an exceedingly hard schedule. Only last Saturday the team played its first game of the season against what is rated by many as the number one team on the Pacific coast. On the other hand it is entirely uncalled for that any Idaho paper should openly state that the Vandals have not a chance to break through some admittedly stiff competition. In any sport, or we may truthfully say in any line of endeavor, psychology plays an important role. A contestant or team has won half the battle when it steps onto the field, court, or into the ring with self confidence and a will to win. At present, Idaho, the team, and those who attend the university and support the team have the will to win. However, if the sentiments which pervaded the paper of the College of Idaho continues it is doubtful just how long the varsity will be able to feel that self assurance so essential to victory.

No more need be said on this subject. However, let us hope that in the future such poor taste on the part of our southern neighbor at Caldwell will not be shown. Perhaps this spirit which is certainly not representative of the state as a whole is brought about by the feeling that the University of Idaho is a big brother to the smaller college. May this attitude change to one which will back the team and send them into the game knowing that they are being supported by every individual in the entire state of Idaho.

Argo-Nuts

Went to the dance the other night. All the frosh were there. They came from Pullman, came from here. They came from everywhere.

The sophomores and the juniors, (The seniors were in bed). Danced around until the y thought. The freshman must be dead.

But when the frosh came home that night. They were so doggone pert. The members got them busy. Parting woodwork from its dirt.

Learned in Phil—There's nothing like personality, unless you're the old fashioned type and go in for intelligence and all that sort of you-know-what.

We thought a long time about making a pun on the announcer's remark that Smitty was "still" on his feet Saturday, but decided agin it on account as he is still with us.

Three blind dates, Three blind dates, See how they rate, See how they rate. They all ran after the froshie's time. They all fell after the froshie's line.

But the only impression they made in her mind was Three Blind Dates. TB or not TB, that is the question.

Campus Clips

By BOYD

The Occident, a literary supplement to The Daily Californian, was founded originally in 1880 as an anti-fraternity organ. At that time it was a small weekly pamphlet bearing the wildest accusations against campus fraternities, along with a few poems and literary endeavors.

Entertainment by Sid Lippman's Coconut Grove orchestra was the feature of a pep rally held by the University of California prior to their meeting with Stanford last Saturday on the gridiron. Joe E. Brown was master of ceremonies for the event.

Phi Kappa Tau and Phi Delta Theta fraternities on the Washington State campus were ransacked last Friday night by burglars. Almost \$100 in cash was taken by the thieves. Students at Idaho are warned to be on the lookout for such marauders.

Some of the collegiate terms brought to light by Barney Clark in The Oregon Daily Emerald include pigger—one who dates (mass.); knifer—campus politician. Will do anything for a vote except kiss the president of the school; and import—the out of town gal you haul in for the big dance. Expensive, but Oh my!

The average freshman boy at Whitman college is five feet, ten and one third inches tall and weighs 154 pounds. The average freshman girl is five feet, four and

one half inches tall and weighs 123 pounds. What a nice looking couple they should make.

During the annual mixer at the University of Oregon recently the coat rack in the check room collapsed. As a result, two men are facing the winter without topcoats, and a third has the wrong garment that may keep him warm, but probably won't fit.

20 per cent of the students at

Washington State do not dance. Of the remaining 80 per cent, 75 per cent of the men interrogated prefer the waltz. That should prove something, but just what, I don't know. Perhaps romance is working its way into the lives of the hard boiled, "been-around" collegian.

The underclassmen at the University of California have abolished the old "hate" tradition and are cooperating in bringing about new friendship between the freshman and sophomore classes

Kenworthy
NOW SHOWING
CAROLE LOMBARD
in
"BRIEF MOMENT"
and
Laurel - Hardy Comedy
SUNDAY — MONDAY

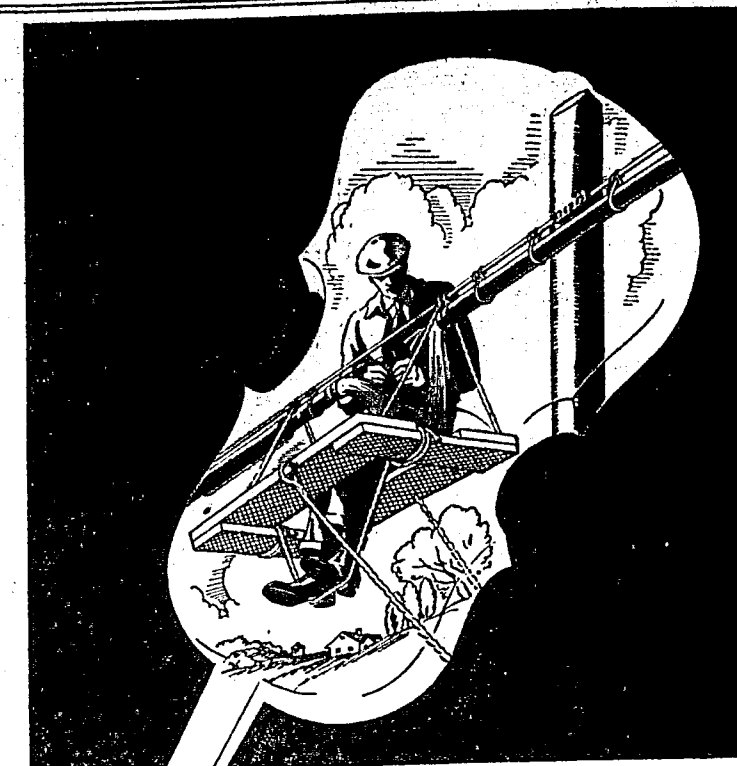
Broadway Year-Long Laugh
Hit... Now on the Screen!

"GOOD-BYE AGAIN"

VANDAL
NOW SHOWING
"TESS OF THE STORM COUNTRY"
with
JANET GAYNOR


WATCHES... like any machine need regular inspection!
You wouldn't expect your car to run months without oil or service of any kind... Actually your watch "runs" under greater strain, proportionately, than your auto... Don't be unfair to your timepiece!... An inspection may disclose some minor "ill" that prevents accuracy... No charge for expert inspection and estimate... As in repairing, so we offer the best product of the watchmaker's art—our GRUEN *Guild* Watches.
Baguette, rare value
A dainty time-keeping
\$29.75

CORNER DRUG AND JEWELRY STORE



Fit as a fiddle...

Telephone service must be kept fit as a fiddle 365 days a year.

Thanks to a continuous program of maintenance and replacement, Bell System plant is today more efficient than ever. Constantly improved operating methods provide the swiftest, surest service on record. Plans devised by telephone men fit the service more and more exactly to subscribers' needs.

The result of all this is: the telephone gives you a lot for a little money.

BELL SYSTEM

SAY "HELLO" TO MOTHER AND DAD
—RATES ARE LOWER AFTER 8.30 P. M.

Do you remember

... all of the claims that have been made about smoking tobacco—how it was that one was this and that one was that?

After all, what you want to know when you get a thing for a certain purpose is...

"Was it made for that?"

Granger is made of White Burley—the kind of leaf tobacco that's best for pipes.

And old man Wellman, who taught us how to make Granger, knew how.

Granger is made to smoke in a pipe—and folks seem to like it.



a sensible package
10 cents

Granger Rough Cut

—the tobacco that's MADE FOR PIPES

Four Pledge Dances Planned For This Saturday Evening

Idaho's campus social life, which has for the past two weeks been somewhat dormant, again begins to stir with a heavy run of weekend pledge dances. The following dances scheduled for Saturday night are the Sigma Alpha Epsilon, Beta Theta Pi, and Phi Delta Theta pledge dances at their chapter houses and the annual Sigma Chi barn dance at Rowland's Park. Daleth Teth Gmel, town women's organization pledged 24 women Saturday afternoon.

DEAN FRENCH ENTERTAINS

Lieutenant and Mrs. Sheehy, and Miss Margarita Sheehy of Portland, Mr. and Mrs. H. M. Driscoll and Dr. and Mrs. J. H. Einhouse were guests of Dean French, at Hays Hall on Wednesday.

Gamma Phi Beta entertained Phi Delta Theta at an exchange dance Wednesday evening.

Miss Permeal J. French was the dinner guest of Gamma Phi Beta Thursday evening.

Delta Chi entertained Alpha Chi Omega at an exchange dance Thursday evening.

Sigma Alpha Epsilon entertained Kappa Alpha Theta at an exchange dance Wednesday evening.

Delta Tau Delta fraternally entertained the members of the Alpha Phi sorority at an exchange dance Wednesday evening.

The members of the Pi Beta Phi entertained the members of Sigma Nu at an exchange dance Thursday evening.

Mrs. Jean Endslow, Spokane, and Miss Naomi Randall, Deary, were dinner guests of Kappa Alpha Theta sorority Wednesday evening.

Kappa Alpha Theta was entertained at an exchange dance at the Sigma Alpha Epsilon house Wednesday evening.

D. T. G. HOLD FIRST REGULAR MEETING

Daleth Teth Gmel had their first regular meeting Tuesday evening in the Women's gym. Dean French gave an interesting and instructive talk on the topic "Opportunities in College Life." Since Dean French was a very ardent helper in getting Daleth Teth Gmel started and in keeping its standards high, the women always feel favored to have her meet with them and start the year off right. After her message, a few business matters were discussed. A large turnout of pledges indicated some peppy future meetings.

Delta Chi announced the pledging of Gene Hargraves, Pocatello.

S. A. E. FRATERNITY WILL GIVE DANCE

Sigma Alpha Epsilon will give their pledge dance October 7. Patrons and patronesses will be: Dr. and Mrs. Irwin Graue, Mr. and Mrs. Hamilton West, and Mr. and Mrs. A. M. Sowder.

Wilbur Colton was the Wednesday dinner guest of Chi Alpha Pi.

BETA'S HAVE PLEDGE DANCE SATURDAY

The Beta Theta Pi pledge dance is to be held Saturday night at the chapter house. Decorations and programs have not yet been decided upon. Patrons and patron-

esses will be Dr. and Mrs. J. Harry Einhouse, Mr. and Mrs. Abe Goff, and Mrs. Leonore Scott.

Adrienne Livette and Jean Ricker were lunch guests Wednesday of Kappa Kappa Gamma.

Phi Delta Theta, fraternity pledge dance is scheduled for Saturday night in their chapter house. Patrons and patronesses are Mr. and Mrs. Lawrence Chamberlain, Mr. and Mrs. Robert Montgomery, and Lieut. and Mrs. J. H. Sheehy.

Sigma Chi members will entertain the pledges at their annual Barn dance Saturday evening, October 7. The dance will be held at Rowland's park. Patrons and patronesses will be Dr. and Mrs. J. W. Barton, Mr. and Mrs. J. E. Buchanan, and Mr. and Mrs. Leo Calland.

Kappa Kappa Gamma was the guest of Sigma Nu at an exchange dance Tuesday evening.

Lambda Chi Alpha entertained Delta Delta Delta Wednesday at an exchange dance.

24 WOMEN PLEDGED TO TOWN GROUP

Daleth Teth Gmel pledged twenty-four women on Saturday afternoon at the Women's gym. They were: Agnes O'Hara, Vivian Larson, Vera Allen, Ida Allen, Gertrude Gherke, Lorena Rosa, Lois Stier, Fern Erickson, May Sturdevant, Inez Rudell, Maxine Goodell, Melvin Magee, Edith Brown, Margaret Matthews, Lil-

ian Carlson, Helen Holsington, Alice Ingle, Mary Stevens, Etta Purcell, Rose Hall, Bertha Jackson, Elizabeth Carlson, Lucia Johnson, Elva Anderson.

Sigma Chi sisters and daughters were entertained at dinner Wednesday evening. Those present were Mrs. R. L. Campbell, chapter; Maybelle Lockwood, Miriam Babcock, Jane Dunn, Mary Margaret Pence, Mary Congdon, Ethelene Gibbs, Beatrice Gibbs, Cecelia Gibbs, Dorothy Brown, Maribelle Edmonds, Helen Luke, Mary Simonton, and Gertrude and Ellen Gherke.

W. A. A. SPONSORS TENNIS TOURNAY

Many Women Show Interest In First Sport Event of Year

The fall tennis tournament for women is in full swing. The first match to be chalked up on the W. A. A. bulletin board was Gertrude Oleson and Judith Crites, the latter winning the match and scheduled for the second round which must end October 21.

The following women have entered the tournament: Ruth Kehrer, Marie de Winter, Esther Hunt, Mae Pugh, Rachel Nelson, Gertrude Oleson, Judith Crites, Jane Merrick, Bertha Wilburn, Emilie Bethmann, Bernice Wilson, Dorothy Preuss, Dorothy Holt, Maurine Kinghorn, Marian Graham, Marian Ginder, Anna Sweehy, Marian Swanson, Mildred Anderson, Barbara Walker, Eleanor Hoyt, Katherine Kimball, Mary Fattu, Rachel Chenoweth, Lucile Bell, Ellen Frazier, Pamela Persons, Ruth Ferney, and Edith Miller.

November 4, has been set as the date for the finals of the tournament.

France has appropriated money to teach Americans by radio how to drink, believing that Americans need to be re-educated in the use of wines.

Sorority Pledges Maintain Hubbub In Two Libraries

"Silence!" even if it is a big word and in plain sight, has done very little to quiet the rumbling of voices which have taken possession of both the reserves and reading libraries.

Too many pledges this year—too many houses are out for the scholarship cup and are beginning by making all pledges remain in the library from 8 until 12 o'clock and from 1 until 4 o'clock. With the Tri Deltas, the Alpha Phis, and the Pi Phis all having had the cup twice, it will be another race as to which group will retain it permanently.

Even the Delta Gamma pledges are there all at one table but not too busy to watch the others near by.

The Tri Deltas are evidently music and art. Just what type is hard to say, for they are much too busy to stay long in one place.

Thetas have chosen the last table, probably because it is too far for the librarian to come, and at least they don't need to watch from behind.

The first table for the Gamma Phis and the early bird again. Pi Phis and Alpha Phis have chosen the upstairs library. That must be a case of law or even business.

At least, we can find a good many pledge pins in both libraries.

ANNOUNCE GLEE CLUB VACANCIES

Miss Dorothy Fredrickson, instructor in the music department, wishes it known that there are still a few vacancies in the soprano section of the Women's Glee club.

All those who are interested are urged to report at the university auditorium Monday at 4 p. m. Miss Fredrickson is confident that this club will surpass any which have preceded it.

Fresno State college recently observed the beginning of the new school year with the opening of the new \$20,000 library.

Elsa Elsinger, graduate of the school of music, is teaching at Kamiah. She has charge of the sixth grade and supervises the music of the whole school system.

Miss Elsinger is a member of Alpha Phi sorority, Mortar Board, and Sigma Alpha Iota, music honorary and was vice president of Daleth Teth Gmel, town women's organization.

GOSSETT'S BARBER SHOP

Next Door to Jerry's

MUSIC GRAD GETS POSITION

Elsa Elsinger, graduate of the school of music, is teaching at Kamiah. She has charge of the sixth grade and supervises the music of the whole school system.

Miss Elsinger is a member of Alpha Phi sorority, Mortar Board, and Sigma Alpha Iota, music honorary and was vice president of Daleth Teth Gmel, town women's organization.

GOSSETT'S BARBER SHOP

Next Door to Jerry's

Be First to Wear the Newest

Dresser

\$5.90 to \$14.75

Satins, of course! New rough silks, too—and lots of new ribbed sheers, soft crepes, dark plain sheers—you'll find them all at Penney's! Sleeves are different—necklines, too—and shoulder treatments will surprise you! Come today—be first to wear the new frocks!



J. C. Penney Co. Inc.

DEPARTMENT STORE

Frosh!

A complete assortment of Paddles

R. J. MOORE
CABINET SHOP
217 E. Third
Half Block E. of Jerry's

The Parisian

Phone 2256



A Scoop in Woolens for Campus Wear

\$5.95

Angoras, French Jersey
Strictly Tailored
Brown, Wine, Oxford
Green, Blue
Sizes 14 to 20.

Prices on these styles will be higher for reorders.

CALENDAR	
SATURDAY	OCTOBER 7 Phi Delta Theta Pledge dance. Beta Theta Pi pledge dance Sigma Alpha Epsilon pledge dance. Sigma Chi Barn dance.
FRIDAY	OCTOBER 13 Kappa Kappa Gamma pledge dance. Ag Bawl at Memorial gym.
SATURDAY	OCTOBER 14 Daleth Teth Gmel and Tau Mem Aleph dance, L. D. S. Gamma Phi Beta pledge dance.
SUNDAY	OCTOBER 15 Student Recital, 4 o'clock Auditorium.

PRESIDENTS AND DEPARTMENT HEADS OF THE LEADING UNIVERSITIES RECOMMEND.

WEBSTER'S COLLEGIATE

"The best American dictionary that has yet appeared for a college student to keep within arm's reach. What he does not find between its covers in relation to the general use of words in speech or on printed pages will not be necessary to a liberal arts degree."—Oscar Love, Director, Winter Institute of Literature, University of Miami.

The best authorized dictionary because it is based on the "Supreme Authority"—Webster's New International Dictionary.

100,000 entries including hundreds of new words, with definitions, spellings, and correct uses; a dictionary of biography; a gazetteer; rules of punctuation; use of capitals, abbreviations, etc.; a dictionary of foreign words and phrases. Many other features of practical value. 1,208 pages. 1,700 illustrations.

See It At Your College Bookstore or Write for Information to the Publishers.

G. & C. MERRIAM CO. SPRINGFIELD, MASS.

In Line With The Times

Our prices have been materially reduced but—the standard of our work is constantly increased.



Salon honors awarded our portraits sets a standard that we maintain in our Gem sittings.

HUTCHISON STUDIO

Phone 7636 for appointment
The New Studio "Near the Campus"

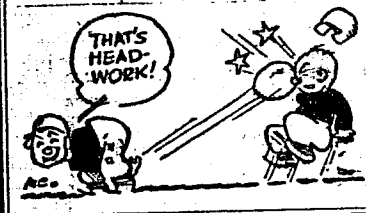


We carry a complete line of cleaners, including Spot Solvent Gas—Oil—Tires
Union Service
"Cheerful Service Quickly Given"

DON'T MISS THE ALL COLLEGE DANCE
After the Game SATURDAY NITE Admission 40c Each
TICKET DANCE FRIDAY NITE
BLUE BUCKET INN

SPORT SHOP

By BILL MCCREA



Nib Borleske, dean of northwest coaches, is bringing his nineteenth team to Idaho tomorrow and as usual Idaho fans, although expecting a win, will be on hand to see an interesting game. Games in which Borleske's men compete are invariably interesting and filled with tricky, heads-up football.

In all his nineteen years of coaching, Borleske has never turned out a football team at Whitman which has finished lower than second place in the Northwest conference. And many times he has taken the measure of larger schools in the Coast conference.

The Missionary quarterback and sparkplug is again "Hoot" Gibson, midget speed merchant. Gibson is reputed to be one slippery little man to pin down. And Gibson is not the only fast man on the Whitman team. If Borleske wishes, he can start a backfield composed of four men, each of whom can do the 100-yard dash in less than 10.5 seconds. Wooten and Dietz each can show a disappearing pair of heels to the average secondary defense men.

Most of Whitman's regular line graduated last year but Borleske had a large number of lettermen from which to choose his line for this year. Captain Gallord Nelson at tackle, Al Ullman at guard, and Fred Perkins at center, are expected to stand out in the Missionary line.

Coach Leo Calland has served notice to his first team that they are to start tomorrow's game and are going to stay in there until they have given everything they've got in the way of powerful and versatile attack. And if the Vandals don't get clicking, everyone of the regulars is going to be in for a full 60 minutes of play.

And here's a tip—if the Vandals do get going and click like they did for their one touchdown drive in the Washington game, you'll see them run up a little score. But don't leave—the fourth quarter is liable to bring out some very interesting football. Strange faces and feet will probably be seen wandering around the Vandal backfield and line. And you're liable to see some of our football men doing things they've not done before in league football games.

Anderson's two tackles are Gray, and White. The rest of Ott's team however, is black and blue.

University of Missouri officials barred one instructor and 90 students from classes until they paid for past meals at the university hospital.

Whitman College Invades Idaho Campus Tomorrow

Missionaries Bring Light and Fast Team Here, Saturday

Idaho's first-stringers will start against the Whitman college eleven here Saturday knowing that they won't be relieved until they have shown Coach Leo Calland some very first class offensive tactics.

The Vandal football machine, potentially powerful, needs tuning in its offense, Coach Calland feels, and he welcomes the game Saturday as a golden opportunity in which to do some tuning. The Whitman team is light and fast, according to reports, and its heads-up playing will make the Vandals maintain top form against them. If necessary, Coach Calland told the squad this week, the first team will go the entire 60 minutes for needed playing experience, particularly on offense.

Coach Calland wasn't altogether satisfied with the Idaho team's showing against Washington. Defensively the Vandals stopped the line thrusts of the heavier Huskies, but slipped up on some tricky lateral passes. The Vandals showed their inexperience, due to the number of sophomores in the line-up. Idaho's offense failed to click on several occasions, but when it did get going Washington's first team thrown back into the game failed to stave off a touchdown. Coach Calland has been working the Idaho squad all week to bring its offense up to where it belongs.

Stress Passing
A respector of Nig Borleske's famed willness, Coach Calland has been drilling the squad particularly on Whitman plays. These plays have been run off by a squad under the direction of Coach Rich Fox.

In an effort to find additions to his meager punting staff, Coach Calland has been having McCue, 210-pound tackle, dropping into the backfield and trying his hand at that department of the game. McCue, however, is no novice and has been booting the oval as far as anyone, with perhaps the exception of Randall.

Experimentation in an effort to find some more flingers for his forward passes has also been part of Calland's work during the past week. Several new prospects have appeared and we may expect not only more Vandal passes in the future but a greater variety of men doing the heaving. At any rate, Coach Calland intends in the Whitman game, to find out just what he has on his squad.

Whitman Team Fast
Whitman's team is light, as usual, but according to reports, is going to be one of the speediest to play against the Vandals during the entire season. Although Coach Nig Borleske has only four regulars from his last year's team, he has about 12 reserve lettermen. In addition, a host of new men from other schools have joined the Whitman squad, giving Borleske a squad of over three full teams.

The Missionaries are expected to again give an exhibition of the fast, tricky, and smooth-working brand of ball which their famous mentor always produces. Nelson, Doran, Ullman, and Gibson, all regulars of last year are the chief mainstays of Borleske's squad. Gibson, in particular, has the rep-

utation of being one of the fastest and cleverest little quarterbacks ever to lead a Whitman team. "Hoot," as he is called, is faster than a streak of greased lightning, and once he gets away is as slippery as a bar of "non-pure" soap. Opposing secondaries are all on their toes when "Hoot" starts out with the ball.

Probable Lineup
The probable starting lineup:
Vandals Missionaries
Randall LE Packer
McInerney LT Nelson (C)
A. Berg LG Doran
Swann C Perkins
Nutting RG Ullman
Moser RT Buehl
Garst RE Cummings
Nordby LH Wooten
Jacobby RH Dietz
Smith QB Gibson
Cordon FB Dosskey

ADDRESS SYSTEM TO BE INSTALLED

The Idaho-Whitman game fans will have a treat in store for them as far as identifying players, and understanding the game is concerned when a new public address system is installed for the game Saturday. The apparatus which is the property of W. S. C. is being brought to Moscow by courtesy of the Associated Oil company of California.

June Hanford, former Vandal grid star, will be the announcer. Hanford has announced many events at the university and is well qualified for the work.

The address system will be used in all varsity games played at MacLean field this season.

HELL DIVERS HOLD ANNUAL TRYOUTS

Tryouts for Hell Diver's club swimming organization, will be held on the evening of October 19 in the university pool at the Memorial gymnasium. The test will include swimming and diving and all phases of life saving work. Anyone holding a senior life saving certificate is eligible for membership, or anyone who is a competent swimmer.

The club has 20 members enrolled in the university at the present time. Meetings of the club have been changed from Wednesday to Thursday nights for the coming year. The club puts on a program of aquatic stunts in the spring of each year.

A faculty gymnasium has been opened for all full time instructors and professors at Purdue university. Tournaments in various sports have been planned for the faculty men.

Former Leader of the IDAHO PEP BAND

Al Marineau

AND HIS BAND

Direct from Hollywood at the WORLD'S FAIR, CHICAGO



Moose Hall

SATURDAY OCTOBER 7

Admission 40c per Person

PHI DELTA, BETA FROSH STRUGGLE

Beta Theta Pi and Phi Delta Theta pledges renew their rivalry Sunday morning at 10 o'clock when they clash in their traditional football game on MacLean field. The Phi Delt pledges issued the challenge early in the week, and both groups have been hard at work practicing for the game.

Rivalry between the pledge classes is always keen, and the game should be a real scrap. Men turning out for the freshman squad are ineligible to compete, said representatives of the houses Thursday.

Thirty members of last year's football squad have returned to the University of Nevada.

FROSH TEAM (Continued from page one)

from appendicitis and is out indefinitely.

For the anchor post Coach Anderson has two good men available, Spaugy, Nampa, and Woody Hall, Moscow. Anderson is fortunate in having an ample amount of strength at this position this season, and Spaugy and Hall will assure him of plenty of power in the center of the line. Reed, Twin Falls, is another man who was out for center, and was well on the way to a permanent berth when, due to a bad heart, he was ordered by the university physician to discontinue football. This sudden ending of Reed's football career was a jolt to the Idaho coach and players alike.

Savage May Start
Coach Anderson expects to start

Savage, 180-pounder from Nampa, at inside half, if he has recovered from a leg injury. McIvor, Rexburg, is anxious to show his mettle in the event that Savage is unable to start.

For outside half, Ritzhelmer has been given the bid. Ritzhelmer has 187 pounds of line-smashing muscle, and has been playing in there all the time in scrimmage.

Ross Sundberg, thundering Swede from Idaho Falls, who was expected to fill the fullback post, is out indefinitely due to a strained elbow. Green, apt understudy of Ross, will be in the opening

lineup. Hill, Moscow, and Mielke, Cameron, are in reserve at backing up the line.

Of the several good men out for quarterback, Devlin, 155-pound ball packer from Mountain Home, has been picked by Coach Anderson to fill the important post. Devlin is a nice broken field runner and a sweet passer, and has good reserves back of him in the persons of Hogan, Brubaker, and Kaeser.

A. Hickland, 230-pound tackle, is the heaviest man on the Florida football team this year. He stands six feet, four inches.

We are prepared to give you the same good work we have done in the past. Our work will compare favorably with work done any place.

Sterner's Studio

Those Well-Dressed Men

you see at the game tomorrow buy their clothes at CREIGHTON'S. They know that we know style-quality and value in men's clothes.



CREIGHTON'S

After the show or after the game come to

WALGREEN'S

Aerie Palm Garden

A complete line of drugs and cosmetics

University Pharmacy

COMING!

A Special Representative from the CROMWELL TAILORS

with a complete display of New Autumn and Winter Patterns in the full piece

His visit will be a real opportunity to secure expert advice on styles and fabrics... and to select your NEW SUIT, TOPCOAT or OVERCOAT from the EXCEPTIONAL WOOLENS IN THE FULL PIECE.

Finest Quality — Attractive Prices MONDAY, OCT. 9

"COME IN ANYHOW"

HOSLEYS

MEN'S WEAR

Moscow

IT'S HERE!

A NEW FOUNTAIN PEN MADE BY PARKER

\$1.25

The Parkette is a full size fountain pen with all the appearance and features of a \$5.00 pen. Best of all, it's made by Parker. No longer is it necessary to purchase an off standard pen by some unknown manufacturer in order to meet a low price. Here is one that is made and sold by one of the oldest and finest pen makers in the world.

See It At Our Store

HODGINS' DRUG & BOOK STORE

Member National Association of College Stores

To wear a well made suit correctly tailored for you is to feel and enjoy the pleasure of being well dressed.

Suits and Overcoats From \$22 up.

N. M. PENNELL, Tailor

102 W. 6th St.

The New

Wahl Oxford Pen

\$1.00

SHERFEY'S BOOK & MUSIC STORE

"If it's new, we are the first to have it"