

newest equipment
to be on display on
9.

IG
NOW

WE
TA JUMP
NET?

ING

ce in sports

CTS

9

ING

CTS

9

ING

CTS

9

ING

CTS

9

ING

CTS

9

ING

CTS

9

ING

CTS

9

ING

CTS

9

ING

CTS

9

ING

CTS

9

ING

CTS

9

ING

WINNERS OF IDAHO'S ANNUAL

SONG FEST ANNOUNCED

EXCLUSIVE!

See Page 5

The Idaho Argonaut

VOL. 53, NO. 56.

THE IDAHO ARGONAUT, Official Publication of the ASUI

FRIDAY, APRIL 29, 1949

NOTICE TO ALL LIVING GROUPS:

HOUSE GRADE POINT

AVERAGES LISTED

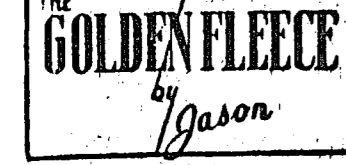
See Page 5

Moulton Edges Carlson For ASUI Presidency At Polls

Saturday's Parade To Highlight Little International Ag Show

Week-Long Affair Given By Students

A nail driving contest will top the list of special events scheduled for the Saturday evening show which will conclude the Little International Livestock show, according to Francis Flerchinger, publicity chairman.



Any new student administration taking office will usually have its hands loaded with projects it hopes to accomplish, routine appointments to make and approve, and old business to finish. To the officials elected at the recent ASUI elections their problems are made greater by the housing shortage.

Yes, our august assembly of president and executive board members will have to set as their number one function—the location of office space. After June 1, the offices in the Student Union building will have to be vacated to make way for the new construction which is slated to begin at that time.

Jason was informed today that one of the first walls of the building which will be razed is the north wall surrounding the Argonaut office. So he too is looking for new headquarters. A location on North Main might solve the long felt need of the Arg staff to be nearer its recreation, but it is a long way from the campus.

Now that the elections are over and the die has been cast, Jason and the Arg staff wish to extend congratulations to Bob Moulton, the new president and his executive board cohorts. Also, please don't forget us when you are doling out the favorite spots.

Problems Multiply
This is only one of the problems which the board will face because of the pending university building program which will get into full swing this summer. All campus dances will have to be either eliminated or a new dance space will have to be used. The gymnasium is not capable of being utilized for very many of these because of its athletic overflow through the year.

The solution might be the changing of emphasis from all campus events to small house and organization private functions. Whatever the answer will be, the new executive board will have to make the stand.

Buses To Concert

Chartered buses to Pullman for the substitute Hazel Scott concert in the Community Concert series May 2, will leave at 7:15 p.m. from the Moscow hotel.

Buses will drive passengers to the door of the concert hall and call for them there at the end of the concert. Everything above expenses goes for CARE packages.

Round trip tickets may be purchased at the Corner Drug and the Graduate Manager's office for 50 cents. Those planning to use this transportation are asked to buy tickets as early as possible to help in estimating the number of buses needed.

OLD MAKES WAY FOR NEW

Old walls went up in smoke when the remainder of the old Administration building, after the fire of 1906, was dynamited to make room for the construction of a new one.



TUESDAY:
Alpha Phi Omega will meet at 7:30 p.m. in upstairs lounge of Bucket.

Other events included in the evening show—which will be held in the Field House at 7 p.m., will be the annual pie eating contest and a weight-guessing contest. Last year's pie-eating champion, Jack Troutman, will supervise the first contest. In the latter, the audience will guess the weight of a steer from the university barns.

Parade On Saturday
The parade will start at 1:30 p.m. at Main and A proceeding down Main to Sixth, up Sixth to Deakin, down Deakin to University avenue. The parade will leave University avenue at Blake street, continue past the Gamma Phi house and around the circular drive in front of the Ad building, back to University avenue and to the Field House.

Winners Announced
In contests already held in the Little International show the following students were awarded first, second, and third in the order named:

Dairy proucts—Glen Hart, Nick Plato, Elmer Sorenson; soils identification—Don Wagoner, Gerald Weaver, Fred Troeh; seed identification—Claude Morrow, Tom Prjest, Kay Hult; plant pathology—Frank Takatori, Fred Kohl, Tom Priest; vegetable seed identification—Larry Rappaport, Jim Baggett; horticultural plants—Jim Baggett.

All floats and displays will be on display in the Field House, Flerchinger said, and added that everyone is welcome to attend any part of the Little International Livestock show.

Drive To "Beautify Campus" To Begin Tomorrow Morning

The Blue Key-sponsored drive to "beautify the campus" will get underway early tomorrow morning when each living group will be assigned certain areas on the university grounds to clean up.

Dean Dimick and Morgan Tovey, co-chairmen for the cleanup drive, announced that trucks sponsored by Blue Key will start the rounds of the campus at 10:30 a.m. instead of 11 as previously announced, to collect trash gathered by the living groups. This early hour has been decided upon in order to finish in time for the Little International.

Responsible For Areas

Presidents of the individual groups will be contacted to make sure that the areas assigned are recognized. All Blue Key members are requested to be at the Blue Bucket at 10:20 a.m.

Living groups are asked to clean up the areas indicated. Hays hall, Forney hall, and Tau Kappa Epsilon: area immediately surrounding respective halls and house plus that around tennis courts and central music cottage; Ridenbaugh hall: area around hall and the Engineering building; Gamma Phi Beta and Kappa Sigma: area around respective houses and area on both sides of the road between the two houses.

Delta Chi and Kappa Alpha Theta: area around respective houses and around Perch and Nest; Phi Gamma Delta: area around house and the infirmary; Sigma Alpha Epsilon and L.D.S.: area around houses and along Deakin street to the Theta corner; Phi Kappa Tau: area around house and corner by Campus Cafe; Alpha Tau Omega and Pi Beta Phi: area around respective houses and Blue Bucket. ATO will also clean along University avenue. Delta Gamma and Phi Delta Theta: area around respective houses, along Elm street and University avenue.

Other Houses
Sigma Nu and Alpha Chi: area around houses and along Elm (Cont. on page 2, col. 7)

Hell Divers Give Entertaining Acts In Water Circus

Blasto, the human cannon ball, and the Chlorine Chorines will open the Hell Divers water circus, "Porpoise Promenade," tonight at 8 p.m. in the Memorial gymnasium. Ring master of the hour's show tonight will be Jack Gregory, and Jack Lein will serve as m.c. at Saturday's presentation.

Other performances on the program are the Flying Samkires, a team of comedy divers and ballets. Tandem swimming, a side show, and the finale will complete the aquacade.

Features Comedy Divers

George Tindall, Don Medley, Jim Farmer and Tom Gentry are members of the men's ballet; women ballerinas are Ann McKay, Jody Getty, Jan Garber, Jody Goul and Joanne Paulson. Tindall and Medley are also comedy divers, and Farmer and Gentry will demonstrate plain diving. Tandem swimmers include Jan Garber, Ed Fiester, Z. L. Pearso, Carl Kenny, Chuck Clark and Dick Merrill.

Name Committee Heads

Committee heads for the circus are Al Pappenhagen, lighting; Ross Newland, technical director; Carol Shaffer, make-up and costumes; and Jim Farmer, scenery. Miss Mary Fram of the women's athletic department is co-director and Coach Eric Kirkland is advisor. General chairman and author of the show is Ed Fiester.

Tickets are on sale in all living groups for 50c each for the two evening performances.

DISCOUNT CARDS

Students of Boston college are able to buy purchase cards, costing \$1, enabling the students to obtain discounts from 10 to 25 percent in nearly 30 Boston, Cambridge and Newton stores.

Moulton Will Head ASUI Activities



On May 10, Bob Moulton, victorious candidate in Wednesday's election, will take over the reins of the ASUI student government. A member of this year's executive board, the newly chosen proxy will take over the reins from retiring president, Dave Weeks at a joint meeting of the old board and the newly elected officials at the next regular meeting.

Executive Board Expands Publications Department

ASUI publications were the chief concern of executive board members at their meeting last Tuesday night. Among the action taken for the regulations of this department were the making of radio station KUOI a member of the publications group, the approval of a plan to award Gem service keys, and the addition of the ASUI secretary, the Argonaut editor, the Gem editor, the Blot editor, and the station director of KUOI permanent members of the publications board.

Problems Discussed At Nat'l. Conclave

Dean Louise Carter returned Sunday from the national convention of Deans of Women held at Chicago, Ill.

Specific emphasis was given at the convention on promoting student responsibility. "Students at the University of Idaho are way out in front in assuming campus responsibility," stated Dean Carter upon her return from Chicago.

Vocational assistance offered to students at various colleges throughout the country was also discussed.

Students Study Butter Content



Monday afternoon the first of the student competition events being held this week on the campus in the Little International show was the dairy products judging. Checking butter samples from left to right are Nick Plato, Glen Hart, Dave Thacker, Jack Trautman, Don Wagoner, John Simpson, Sherman Nesbitt, and Don Brighton.

Area High Schools Invited To Attend WRA Sports Event

Thirteen high schools have been invited to the WRA sports playday tomorrow on the women's athletic field, stated Valeta Hershberger, WRA president.

Schools are Lewiston, Clarkston, Moscow, Troy, Pullman, Palouse, Genesee, Deary, Kendrick, Potlatch, Reubens, Orofino, and Plummer.

Registration will begin at 9:30 a.m. and the playday will continue until 3 p.m. In case of rain, an indoor program will be carried out in the women's gym.

Committee Heads Named

Assisting with the playday are Irene Schou, entertainment; Rosemary Fitzgerald, invitations; Stella Johnson, registrations; Pat Lyons, hostess; Sue Beardsley, general program; Jean Wardell, refreshments; and Alice Inglebritson, equipment. Dorothy Galey is assisting Miss Hershberger as general chairman.

These women will choose members of WRA to assist them throughout the day.

The outdoor program will include volleyball, softball, a tour of the campus, and folk dancing. Group mixers will be held and high school girls will be divided into non-school teams.

In case of rain, basketball and volleyball will be played, and games and relays will be substituted for a four of the campus. Lunch will be served.

Officers Named For AIEE Chapter

Don Lapray was chosen chairman of the American Institute of Electrical Engineers last Monday.

Other officers are Don Baumgartner, vice chairman; Bill Adams, secretary; Fred Hyland, treasurer; and Keith Dedrick, senior representative; Leonard Hartwig, junior representative; Lonnie Roe, publicity; and Prof. J. Hugo Johnson, counselor.

Lapray will be the chapter delegate to the 9th district of the A.I.E.E. meeting to be held in San Francisco in August.

C. R. Kingsbury, vice chairman of the 9th district, spoke on the manufacture of insulators. A series of slides were shown in conjunction with the speech. Kingsbury is the Seattle representative for the Ohio Brass company.

University Band Will Begin Music Week With Concert

The observance of National Music week, May 1 through 8, will begin on the campus with an All-American concert by the University Band Sunday afternoon. The concert will begin at 4 p.m. in the auditorium, and is free to the public.

The program, which is being sponsored by the Beta Sigma chapter of Phi Mu Alpha Sinfonia, national men's music fraternity, will feature original works by faculty members Hall Macklin, Kermit Hosch, and Wallace Johnson. Dudley Carson, pianist, will be featured soloist for the May day event.

Compositions of prominent American composers have been arranged by William Walter, Ronald Peck, James Riggs, John Sheeley, and Jack Perciful, all music majors, and will be presented at the concert.

Composer Directs March
"Salute to State," a march written by Wallace Johnson, assistant director of the concert band, will open the program. It will be directed by the composer.

The band has chosen "Oriental Dance" as Professor Hall Macklin's contribution to the program. William Walter will conduct his arrangement of Palestrina's "Grant Us Thy Holy Peace."

"Album Leaf," a composition by Edvard Grieg, has been arranged (Cont. on page 5, col. 5)

Executive Board Includes 4 Greeks, 5 Independents

Independent candidate, Bob Moulton, received a plurality of votes cast at the ASUI elections last Wednesday. The largest vote ever cast at an ASUI presidential election were recorded at the polls. Moulton polled 1,057 votes as compared with his opponent, Herb Carlson's 1,007 ballots.

The independents will have a slight edge on the executive board this coming year placing five members while their United party opponents put four on the board.

The new members include: Keith Judd, Pine Hall; Del Klaus, Delta Chi; Bob Mays, Kappa Sigma; Phyllis LaRue, Hays Hall; Dick Gelsler, LDS; Pete Wilson, Alpha Tau Omega; Bob Jonas, Willis Sweet Hall; Ken Briggs, Lindley hall; Bette West, Kappa Alpha Theta.

Votes were counted in the Executive Board office Wednesday soon after the polls closed at 4:45. Election board members who counted the votes were Barbara Deerkop, Gerald McKee, Wilson Churchman, Clyde Winters, Anita Kneale, Lee Bath, Jo Raber, Jake Thompson, Seth Tuttle, Barbara Ulrich, Bill Jewell, and Phil Moulton. Ad Starner, Rex ZoBell, Eleanor Justice, and Barbara Schaff acted as observers for poll tabulating.

Bob Moulton, Homedale, is a junior majoring in public administration. He has been active in student government during his three years of school here, having served on the ASUI executive board, the student-faculty board, student activities board, and the Independent caucus. His scholastic achievements have earned Moulton membership in Phi Eta Sigma and Phi Beta Kappa. He is also a member of Blue Key and Intercollegiate Knights, campus honoraries.

Keith Judd, Burley, a sophomore, is majoring in agriculture and lives in Pine hall, where he is secretary. Judd came to school on a scholarship, and while here has been active on the rifle team, I club, Lambda Delta Sigma, and the student activities board.

Del Klaus, Deep Creek, Wn., Delta Chi, is in his third year as a business major at the university and is present business manager of the Argonaut. He is also treasurer of Sigma Delta Chi, men's journalism honorary, and a member of the activities honorary, Blue Key.

Bob Mays, Boise, is a sophomore, majoring in business, and he lives at the Kappa Sigma house. (Cont. on Page 2, Col. 4)

Dairy Husbandry Wins High Award For Holstein Herd

The department of dairy husbandry has received its tenth certificate from the Holstein Association of America at Brattleboro, Vermont, for the Holstein dairy herd. This is the highest award presented by the association.

"The University of Idaho's herd has qualified for the Progressive Breeder's registry ten years in full compliance with the rules adopted by the Board of Directors of the Holstein-Friesian Association of America," states the certificate.

Based On Achievement
The award is based on high achievement in production, type, freedom from disease, and animals being bred by the owners. In order to qualify the herd must have an annual butterfat production of 394.0 pounds of butterfat, and the university's herd had a 440.8 pound butterfat average. This herd is tested and registered to be free of tuberculosis and Bang's disease.

The complimentary letter accompanying this certificate read, "Yours is the second herd in the United States to qualify for the highest award ten times." The only other herd to share this distinction is owned by the Ionia State hospital in Michigan.

NEW BOOKS TO WSC LIBRARY
Holland library, now under construction at WSC, has a very distinguished and varied collection of books donated by prominent people throughout the United States.

The Idaho Argonaut

Official publication of the Associated Students of the University of Idaho, issued every Tuesday and Friday of the college year. Entered as second class matter at the post office at Moscow, Idaho.

John Martin..... Managing Editor
Allen Derr..... Business Manager
Del Klaus..... Circulation Manager
George Burges..... Advertising Manager
Rumie Graham..... News Editor
Aris Petersen..... Night Editor
Lee Bath..... Assistant News Editor
Kathy Burelgh..... Assistant News Editor
Shella Darwin..... Society Editor
Mary Jane Brewer..... Assistant Society Editor
Elizabeth McMahon..... Sports Editor
Howard Reinhardt..... Feature Editor
Betty Peters..... Copy Editor
Jack Barnes..... Staff Photographer

Proof readers: Bert Johnson and Tom Mitchell.
 Reporters: Helen Means, Harriet Walrath, Margaret Weber, Betty Thompson, Margaret Torrell, Donna Jo Valenta, Bert Johnson, Darwin Cogswell, Jim Marshall, Corine Hammond, Virginia Smith, Pat Albertson, George Cowgill, Bob Holbrook, Bill Hansen, Jack Taylor, Norma French, Margaret Orme, Genevieve Puckett, Carolyn Hansen, Sally Norris, Olevia Smith, Robert Lewis, Orval Hansen, and Fred Cully.
 Rewrite staff: Virginia Orazem, Gordon Grindstaff, and Fred Ehrsam.
 File staff: Ione Allen and Beverly Balka.
 Sports staff: Karl Klages, Phil Johnson, Stan Riggers, Earl Costello, Jerry Kinsey, and Dale Benjamin.
 Business staff: Chuck Vosselson, Beth Lillard, Jack Mosman, Doris Moore, Jim Knudsen, Virginia Logren, Ron Johnston, Shirley Gregory, Eleanor Wilson, Chuck Bottigelli, and Jim Vergobbi.
 Circulation staff: (Mailing) Jean Carter, Barbara Schaff, Marilyn Moulton, Beverly Hayes, Helen Hays, Joan Raymer, Mary Tobin, Sharon Lawrence, Coralee Hart, Beverly Benson, Betty Anne Baker, Joyce Fisher, Margaret Willis, Polly Packenham, and Beverly Diamond.
 (Campus) Neil Henderson, Jane Matthews, Natalie Brown, Laura Tullis, Janet Fulton, and Bonnie Butte.

A Project-Action Wanted

The smoke of the pre-election battle is clearing away. We see a new ASUI president and executive board. We see also a wall between the two groups we know as the Greeks and the Independents. That wall always reaches its greatest height just before elections. It never disappears entirely.

Much of the responsibility for bringing about better harmony will rest on the shoulders of the Executive Board. They are obligated to work for the betterment of all students. There is no place for political patronage. Their job is an important one and one which will not be easily accomplished.

The new board is well qualified to do an outstanding job. It is made up of a representative group of students. Women are encouraged by the presence of two of their number on the board—not a very common occurrence in the past.

It is our obligation, too, to get behind our board and all of our student officers, to forget that we are Greeks or Independents and to work for the good of all the students and the university. —O. H.—

Board Of Regents Approves New Course In Geology Field

Basic research at the University of Idaho is entering a new field—invertebrate paleontology, the historical and fossil side of geology. Special research project 23, providing for the securing of stratigraphic data, and the collection and identification of fossils in southeastern Idaho, was announced today by President J. E. Buchanan following formal approval by the university board of regents.

May 1 Through 8 Named Music Week On Campuses

National and Inter-American Music Week will be observed by colleges, universities, and other groups all over the nation May 1 through May 8. The University will be the scene of three big musical events during that week.

Phi Mu Alpha-Sinfonia is sponsoring a concert of music by contemporary composers, in the University auditorium, Sunday, May 1. William Walter will be featured in senior recital, May 3. The annual All-University Song Fest will take place Sunday, May 8.

The Vandaleers, directed by Glen R. Lockery, will be presenting concerts May 1 through May 6 in various south central Idaho communities. Their annual tour will be concluded with a home concert to be presented in the University auditorium, Tuesday, May 10.

Truman Backs Week

President Truman sums up the purpose and far-reaching significance of National Music week, in these words:

"I hope that the celebration of National Music Week, May 1-8, will provide opportunity for such experiences for many persons throughout the length and breadth of the land. Let us know our own music, enjoy it, and add to our heritage. Let us know, too, the music of other nations, so that the sharing of our cultural resources will lead naturally to a greater measure of understanding and of world cooperation."

Oil Possibilities

"By identifying ancient fossilized animals we are often able to tell the age of the rocks enclosing them and to work out the sequence and distribution of layered rocks. Historical geologists use fossils as a prospecting and searching aid when exploring the economic possibilities of deposits such as the phosphate and limestone beds of eastern Idaho. Such information is basic to explorations to determine whether there are oil possibilities."

Registrar Reveals Grade Procedure

All students wishing to receive their second semester grade reports must leave at the Registrar's office before June 10 a large, letter size, self-addressed, stamped envelope.

The reports will be furnished on unofficial copies of the student's entire university record to date. If you fail to leave an envelope as indicated above, only official transcripts can be issued for which the regular price set by university regulations will be charged.

Reports will be issued alphabetically during the summer as the grades are recorded. The first reports should be ready about July 1 and the last will be mailed shortly after August 17.

Idahoan Slated To Teach Germans

Bringing American home economics training to occupied Germany will be the job this summer of Miss Florence Schultz, county home demonstration agent at Twin Falls.

President J. E. Buchanan of the University of Idaho announced today that Miss Schultz had been granted a four-month leave of absence effective May 1, subject to formal approval by the board of regents.

The Idaho home economist will serve as a visiting instructor on the staff of the Office of Military Government of Germany. She will participate in the home economics training project of the Wuertemberg-Baden area.

Air ROTC Heads Confer At Meet



Brigadier General Ned Schramm, Vice Commander Fourth Air Force, chats with Major Edward E. Lundak, Asst PMS&T University of Idaho (left) and Major Richard Curtiss, Asst PMS&T for Air, State College of Washington. This photo was taken during a lull in a recent conference of all Fourth Air Force PMS&T's held at Hamilton Air Force Base, California.

'Sugar And Spice' Theory Studied By Chemists

Laboratory Analysis, Chemistry 1-2—Subject: Women. Symbol: WO.

Physical properties: 1. Boils at nothing. 2. Freezes at any minute. 3. Melts when treated properly. 4. Very bitter if not used well.

Accepted: Weight: 116. Occurrence: Wherever man exists. Chemical Properties: 1. Possesses affinity for gold, silver, platinum, and precious stones. 2. Violent reaction if left alone. 3. Able to absorb great amounts of food. 4. Turns green when placed beside a better looking specimen.

Uses: 1. Highly ornamental. 2. Useful as a tonic in acceleration of low spirits. 3. Useful as an equalizer in the distribution of wealth. 4. Probably the most effective income reducing agent known to man.

Caution: Highly explosive in inexperienced hands.

Note: Further experiment will prove highly instructive.

U. of I. Grad Heads Ag. Liaison In ERC

The chief liaison officer between the U. S. department of agriculture and other governmental agencies in all matters concerning the European recovery program is a University of Idaho graduate, Leon E. Taylor, class of 1921.

For thirteen years following his graduation, Taylor was club agent, county agent, and livestock and dairy specialist. From 1939 until 1941 he directed the Idaho AAA sugar program. And in 1942 he entered the AAA in Washington.

Previous to his appointment as liaison officer, he had been chief of war food administration's farm machinery and supplies branch and assistant head and later director of the price support and foreign supply branch of PMA.

U. of I. Grad Heads Ag. Liaison In ERC

The chief liaison officer between the U. S. department of agriculture and other governmental agencies in all matters concerning the European recovery program is a University of Idaho graduate, Leon E. Taylor, class of 1921.

For thirteen years following his graduation, Taylor was club agent, county agent, and livestock and dairy specialist. From 1939 until 1941 he directed the Idaho AAA sugar program. And in 1942 he entered the AAA in Washington.

Previous to his appointment as liaison officer, he had been chief of war food administration's farm machinery and supplies branch and assistant head and later director of the price support and foreign supply branch of PMA.

KUOI, Blot Unsatisfactory, Campus Questionnaires Find

On the basis of the questionnaire circulated recently throughout the campus the compiling staff headed by Grant Simons reported today that only one-half of the students on the Idaho campus are satisfied with the operation of KUOI, campus radio station.

Of the 1180 contacted by the poll, over 10 per cent commented that the station still lacks the power and range necessary to serve the student body adequately. Approximately 5 per cent, however, commented that KUOI is showing good improvement, and another 2 per cent remarked that the station was doing a good job with the facilities available.

Blot Inadequate

In tabulating the results pertaining to the first two issues of Blot, almost one-half the students were definite in their opinions that Blot was not adequate in its service to the student body. The comment often repeated was that the issues of the campus magazine under consideration were "raw and trashy," and that the quality of the fiction stories could be definitely improved.

Percentage tabulations of student opinion on ASUI publications and KUOI are: Gem, adequate 89 per cent, inadequate 5 per cent, not answered 5 per cent; Student Handbook, adequate 75 per cent, inadequate 13 per cent, not answered 5 per cent; Argonaut, adequate 75 per cent, inadequate 22 per cent, not answered 3 per cent; KUOI, adequate 53 per cent, inadequate 37 per cent, not answered 10 per cent; Blot (first two issues), adequate 45 per cent, inadequate 45 per cent, not answered 10 per cent.

W. H. Coon To Talk At Business Banquet

W. C. Coon, manager of the Armour company, Spokane, Wash., will be guest speaker at the School of Business Chamber of Commerce banquet to be held May 5, at 6:30 p.m. in the Farmer's club.

Included in the program for the evening will be the installation of the new officers.

Students, townspeople, and faculty are welcome to attend the banquet, and tickets may be obtained at the School of Business office before Monday, for \$1.75.

Phyllis LaRue, Heyburn, Home Economics Major, Hoping To Transfer Here From Boise Junior College Last Year. The I club and Scabbard and Blade number as his activities.

Phyllis LaRue, Heyburn, home economics major, is a junior and lives at Hays hall, acting as vice president there. She is Kappa Phi prexy, Phi Upsilon Omicron president, vice president of Wesley Foundation, and has been in Spurs and Vandaleers.

Dick Geisler, Rigby, past vice president of the LDS house, is a junior in the school of agriculture. He has lettered on the varsity basketball squad for the last two years, and belongs to Alpha Zeta and I club.

Pete Wilson, Coeur d'Alene, is majoring in law, a junior, and lives in the ATO house. He belongs to the International Relations club, and Greek caucus. He has also done some writing for the Argonaut, announcing for KUOI, and has held house offices.

Bob Jonas, St. Anthony, is a junior seeking a BS degree. He is Willis Sweet hall secretary, has worked on the election board, Holy Week and Dad's day committees, and was a member of Phi Eta Sigma and president of Westminster forum.

Bette West, Kappa Alpha Theta from Buhl, is a junior with hopes of obtaining a BA degree next spring. She is a member of Vandaleers, Kappa Phi, Delta Mu, Sigma Alpha Iota, Curtain club, and Spurs.

Ken Briggs, Lindleyite from Murtaugh is a junior majoring in psychology. He is a member of Phi Eta Sigma and Phi Beta Kappa; also has held hall offices and is a member of the Independent caucus.

Phyllis LaRue, Heyburn, Home Economics Major, Hoping To Transfer Here From Boise Junior College Last Year. The I club and Scabbard and Blade number as his activities.

Phyllis LaRue, Heyburn, home economics major, is a junior and lives at Hays hall, acting as vice president there. She is Kappa Phi prexy, Phi Upsilon Omicron president, vice president of Wesley Foundation, and has been in Spurs and Vandaleers.

Dick Geisler, Rigby, past vice president of the LDS house, is a junior in the school of agriculture. He has lettered on the varsity basketball squad for the last two years, and belongs to Alpha Zeta and I club.

Pete Wilson, Coeur d'Alene, is majoring in law, a junior, and lives in the ATO house. He belongs to the International Relations club, and Greek caucus. He has also done some writing for the Argonaut, announcing for KUOI, and has held house offices.

Bob Jonas, St. Anthony, is a junior seeking a BS degree. He is Willis Sweet hall secretary, has worked on the election board, Holy Week and Dad's day committees, and was a member of Phi Eta Sigma and president of Westminster forum.

Bette West, Kappa Alpha Theta from Buhl, is a junior with hopes of obtaining a BA degree next spring. She is a member of Vandaleers, Kappa Phi, Delta Mu, Sigma Alpha Iota, Curtain club, and Spurs.

Ken Briggs, Lindleyite from Murtaugh is a junior majoring in psychology. He is a member of Phi Eta Sigma and Phi Beta Kappa; also has held hall offices and is a member of the Independent caucus.

Phyllis LaRue, Heyburn, Home Economics Major, Hoping To Transfer Here From Boise Junior College Last Year. The I club and Scabbard and Blade number as his activities.

Phyllis LaRue, Heyburn, home economics major, is a junior and lives at Hays hall, acting as vice president there. She is Kappa Phi prexy, Phi Upsilon Omicron president, vice president of Wesley Foundation, and has been in Spurs and Vandaleers.

Dick Geisler, Rigby, past vice president of the LDS house, is a junior in the school of agriculture. He has lettered on the varsity basketball squad for the last two years, and belongs to Alpha Zeta and I club.

Pete Wilson, Coeur d'Alene, is majoring in law, a junior, and lives in the ATO house. He belongs to the International Relations club, and Greek caucus. He has also done some writing for the Argonaut, announcing for KUOI, and has held house offices.

Bob Jonas, St. Anthony, is a junior seeking a BS degree. He is Willis Sweet hall secretary, has worked on the election board, Holy Week and Dad's day committees, and was a member of Phi Eta Sigma and president of Westminster forum.

Bette West, Kappa Alpha Theta from Buhl, is a junior with hopes of obtaining a BA degree next spring. She is a member of Vandaleers, Kappa Phi, Delta Mu, Sigma Alpha Iota, Curtain club, and Spurs.

Ken Briggs, Lindleyite from Murtaugh is a junior majoring in psychology. He is a member of Phi Eta Sigma and Phi Beta Kappa; also has held hall offices and is a member of the Independent caucus.

Phyllis LaRue, Heyburn, Home Economics Major, Hoping To Transfer Here From Boise Junior College Last Year. The I club and Scabbard and Blade number as his activities.

Phyllis LaRue, Heyburn, home economics major, is a junior and lives at Hays hall, acting as vice president there. She is Kappa Phi prexy, Phi Upsilon Omicron president, vice president of Wesley Foundation, and has been in Spurs and Vandaleers.

Dick Geisler, Rigby, past vice president of the LDS house, is a junior in the school of agriculture. He has lettered on the varsity basketball squad for the last two years, and belongs to Alpha Zeta and I club.

Pete Wilson, Coeur d'Alene, is majoring in law, a junior, and lives in the ATO house. He belongs to the International Relations club, and Greek caucus. He has also done some writing for the Argonaut, announcing for KUOI, and has held house offices.

Bob Jonas, St. Anthony, is a junior seeking a BS degree. He is Willis Sweet hall secretary, has worked on the election board, Holy Week and Dad's day committees, and was a member of Phi Eta Sigma and president of Westminster forum.

Bette West, Kappa Alpha Theta from Buhl, is a junior with hopes of obtaining a BA degree next spring. She is a member of Vandaleers, Kappa Phi, Delta Mu, Sigma Alpha Iota, Curtain club, and Spurs.

Ken Briggs, Lindleyite from Murtaugh is a junior majoring in psychology. He is a member of Phi Eta Sigma and Phi Beta Kappa; also has held hall offices and is a member of the Independent caucus.

Phyllis LaRue, Heyburn, Home Economics Major, Hoping To Transfer Here From Boise Junior College Last Year. The I club and Scabbard and Blade number as his activities.

Phyllis LaRue, Heyburn, home economics major, is a junior and lives at Hays hall, acting as vice president there. She is Kappa Phi prexy, Phi Upsilon Omicron president, vice president of Wesley Foundation, and has been in Spurs and Vandaleers.

Dick Geisler, Rigby, past vice president of the LDS house, is a junior in the school of agriculture. He has lettered on the varsity basketball squad for the last two years, and belongs to Alpha Zeta and I club.

Pete Wilson, Coeur d'Alene, is majoring in law, a junior, and lives in the ATO house. He belongs to the International Relations club, and Greek caucus. He has also done some writing for the Argonaut, announcing for KUOI, and has held house offices.

Bob Jonas, St. Anthony, is a junior seeking a BS degree. He is Willis Sweet hall secretary, has worked on the election board, Holy Week and Dad's day committees, and was a member of Phi Eta Sigma and president of Westminster forum.

Bette West, Kappa Alpha Theta from Buhl, is a junior with hopes of obtaining a BA degree next spring. She is a member of Vandaleers, Kappa Phi, Delta Mu, Sigma Alpha Iota, Curtain club, and Spurs.

Ken Briggs, Lindleyite from Murtaugh is a junior majoring in psychology. He is a member of Phi Eta Sigma and Phi Beta Kappa; also has held hall offices and is a member of the Independent caucus.

Phyllis LaRue, Heyburn, Home Economics Major, Hoping To Transfer Here From Boise Junior College Last Year. The I club and Scabbard and Blade number as his activities.

Phyllis LaRue, Heyburn, home economics major, is a junior and lives at Hays hall, acting as vice president there. She is Kappa Phi prexy, Phi Upsilon Omicron president, vice president of Wesley Foundation, and has been in Spurs and Vandaleers.

Dick Geisler, Rigby, past vice president of the LDS house, is a junior in the school of agriculture. He has lettered on the varsity basketball squad for the last two years, and belongs to Alpha Zeta and I club.

Pete Wilson, Coeur d'Alene, is majoring in law, a junior, and lives in the ATO house. He belongs to the International Relations club, and Greek caucus. He has also done some writing for the Argonaut, announcing for KUOI, and has held house offices.

Bob Jonas, St. Anthony, is a junior seeking a BS degree. He is Willis Sweet hall secretary, has worked on the election board, Holy Week and Dad's day committees, and was a member of Phi Eta Sigma and president of Westminster forum.

Bette West, Kappa Alpha Theta from Buhl, is a junior with hopes of obtaining a BA degree next spring. She is a member of Vandaleers, Kappa Phi, Delta Mu, Sigma Alpha Iota, Curtain club, and Spurs.

Ken Briggs, Lindleyite from Murtaugh is a junior majoring in psychology. He is a member of Phi Eta Sigma and Phi Beta Kappa; also has held hall offices and is a member of the Independent caucus.

Phyllis LaRue, Heyburn, Home Economics Major, Hoping To Transfer Here From Boise Junior College Last Year. The I club and Scabbard and Blade number as his activities.

Phyllis LaRue, Heyburn, home economics major, is a junior and lives at Hays hall, acting as vice president there. She is Kappa Phi prexy, Phi Upsilon Omicron president, vice president of Wesley Foundation, and has been in Spurs and Vandaleers.

Dick Geisler, Rigby, past vice president of the LDS house, is a junior in the school of agriculture. He has lettered on the varsity basketball squad for the last two years, and belongs to Alpha Zeta and I club.

Pete Wilson, Coeur d'Alene, is majoring in law, a junior, and lives in the ATO house. He belongs to the International Relations club, and Greek caucus. He has also done some writing for the Argonaut, announcing for KUOI, and has held house offices.

Bob Jonas, St. Anthony, is a junior seeking a BS degree. He is Willis Sweet hall secretary, has worked on the election board, Holy Week and Dad's day committees, and was a member of Phi Eta Sigma and president of Westminster forum.

Bette West, Kappa Alpha Theta from Buhl, is a junior with hopes of obtaining a BA degree next spring. She is a member of Vandaleers, Kappa Phi, Delta Mu, Sigma Alpha Iota, Curtain club, and Spurs.

Ken Briggs, Lindleyite from Murtaugh is a junior majoring in psychology. He is a member of Phi Eta Sigma and Phi Beta Kappa; also has held hall offices and is a member of the Independent caucus.

Phyllis LaRue, Heyburn, Home Economics Major, Hoping To Transfer Here From Boise Junior College Last Year. The I club and Scabbard and Blade number as his activities.

Phyllis LaRue, Heyburn, home economics major, is a junior and lives at Hays hall, acting as vice president there. She is Kappa Phi prexy, Phi Upsilon Omicron president, vice president of Wesley Foundation, and has been in Spurs and Vandaleers.

Dick Geisler, Rigby, past vice president of the LDS house, is a junior in the school of agriculture. He has lettered on the varsity basketball squad for the last two years, and belongs to Alpha Zeta and I club.

Pete Wilson, Coeur d'Alene, is majoring in law, a junior, and lives in the ATO house. He belongs to the International Relations club, and Greek caucus. He has also done some writing for the Argonaut, announcing for KUOI, and has held house offices.

Bob Jonas, St. Anthony, is a junior seeking a BS degree. He is Willis Sweet hall secretary, has worked on the election board, Holy Week and Dad's day committees, and was a member of Phi Eta Sigma and president of Westminster forum.

Bette West, Kappa Alpha Theta from Buhl, is a junior with hopes of obtaining a BA degree next spring. She is a member of Vandaleers, Kappa Phi, Delta Mu, Sigma Alpha Iota, Curtain club, and Spurs.

Ken Briggs, Lindleyite from Murtaugh is a junior majoring in psychology. He is a member of Phi Eta Sigma and Phi Beta Kappa; also has held hall offices and is a member of the Independent caucus.

Kraus To Discuss Hybrid Vegetables

Dr. James E. Kraus, head of the department of Horticulture, will speak at the Sigma Xi dinner to be held May 10 at the Ad club. The topic which Dr. Kraus will speak on is "The Role of Male Sterility in Hybrid Vegetables."

Members who have been selected for Sigma Xi this year are James Martin, Hugh McKay, Walter Sparks and Calvin Warnick.

Associate members, who will be initiated this spring are Kaare Aamlid, Benton Buttrely, Michael Defoe, Jake Harshbarger, Einar Larsen, Russell Lindstrom, Carl Nichols, Charles Ohms and Walter Shaw.

Here's More About—Publications

deem necessary. All selections are subject to the approval of the executive board. Dismissals may also be made by the director with recourse to the executive board.

These new changes will replace the popular election system formerly used to select staff positions at the station.

Board Changes

Upon the recommendation of ARGONAUT editor, John Martin, the board revamped the membership of the publications board. Martin stated that with the expansion of the publications on the campus this year a closer coordination of policy and appointments was necessary.

The board unanimously passed a resolution which will make the head of each of the campus publications and the ASUI secretary permanent members of the board. Under existing regulations these editors were only allowed to sit in and vote when their particular publication was being discussed and no provision had been made for a secretary.

Gem Awards

The executive board passed a measure introduced by GEM editor, Phil Schnell, providing for service awards for service on the staff of the yearbook. Staff members who have served on the staff three years or who have attained a staff head position in two years will be eligible for the award. A key similar to the ARGONAUT service award will be given.

Here's More About—Drive To Beautify

street; Beta Theta Pi: area around house and parking along Elm street and along University avenue near the house; Tri Delta and Alpha Phi: area around respective houses and along Elm street as well as both corners on Sixth street; Lindley hall: area around hall and science building; Kappa Kappa Gamma and Sigma Chi: area around houses and areas around home management house and music practice hall.

Delta Tau Delta: area around house and area in front of Morrill hall; Willis Sweet hall: area around hall, corners of Dairy Science building and U.C.B.; Chrisman hall: area around hall and a detail of men for area around Memorial gym; Idaho club and Campus club: area around halls; Kirtley lab, and a detail of men for area around Memorial gym; Pine hall: area around hall and cafeteria.

Here's More About—Drive To Beautify

street; Beta Theta Pi: area around house and parking along Elm street and along University avenue near the house; Tri Delta and Alpha Phi: area around respective houses and along Elm street as well as both corners on Sixth street; Lindley hall: area around hall and science building; Kappa Kappa Gamma and Sigma Chi: area around houses and areas around home management house and music practice hall.

Delta Tau Delta: area around house and area in front of Morrill hall; Willis Sweet hall: area around hall, corners of Dairy Science building and U.C.B.; Chrisman hall: area around hall and a detail of men for area around Memorial gym; Idaho club and Campus club: area around halls; Kirtley lab, and a detail of men for area around Memorial gym; Pine hall: area around hall and cafeteria.

Here's More About—Drive To Beautify

street; Beta Theta Pi: area around house and parking along Elm street and along University avenue near the house; Tri Delta and Alpha Phi: area around respective houses and along Elm street as well as both corners on Sixth street; Lindley hall: area around hall and science building; Kappa Kappa Gamma and Sigma Chi: area around houses and areas around home management house and music practice hall.

Delta Tau Delta: area around house and area in front of Morrill hall; Willis Sweet hall: area around hall, corners of Dairy Science building and U.C.B.; Chrisman hall: area around hall and a detail of men for area around Memorial gym; Idaho club and Campus club: area around halls; Kirtley lab, and a detail of men for area around Memorial gym; Pine hall: area around hall and cafeteria.

Here's More About—Drive To Beautify

street; Beta Theta Pi: area around house and parking along Elm street and along University avenue near the house; Tri Delta and Alpha Phi: area around respective houses and along Elm street as well as both corners on Sixth street; Lindley hall: area around hall and science building; Kappa Kappa Gamma and Sigma Chi: area around houses and areas around home management house and music practice hall.

Delta Tau Delta: area around house and area in front of Morrill hall; Willis Sweet hall: area around hall, corners of Dairy Science building and U.C.B.; Chrisman hall: area around hall and a detail of men for area around Memorial gym; Idaho club and Campus club: area around halls; Kirtley lab, and a detail of men for area around Memorial gym; Pine hall: area around hall and cafeteria.

Here's More About—Drive To Beautify

street; Beta Theta Pi: area around house and parking along Elm street and along University avenue near the house; Tri Delta and Alpha Phi: area around respective houses and along Elm street as well as both corners on Sixth street; Lindley hall: area around hall and science building; Kappa Kappa Gamma and Sigma Chi: area around houses and areas around home management house and music practice hall.

Delta Tau Delta: area around house and area in front of Morrill hall; Willis Sweet hall: area around hall, corners of Dairy Science building and U.C.B.; Chrisman hall: area around hall and a detail of men for area around Memorial gym; Idaho club and Campus club: area around halls; Kirtley lab, and a detail of men for area around Memorial gym; Pine hall: area around hall and cafeteria.

Here's More About—Drive To Beautify

street; Beta Theta Pi: area around house and parking along Elm street and along University avenue near the house; Tri Delta and Alpha Phi: area around respective houses and along Elm street as well as both corners on Sixth street; Lindley hall: area around hall and science building; Kappa Kappa Gamma and Sigma Chi: area around houses and areas around home management house and music practice hall.

Delta Tau Delta: area around house and area in front of Morrill hall; Willis Sweet hall: area around hall, corners of Dairy Science building and U.C.B.; Chrisman hall: area around hall and a detail of men for area around Memorial gym; Idaho club and Campus club: area around halls; Kirtley lab, and a detail of men for area around Memorial gym; Pine hall: area around hall and cafeteria.

Here's More About—Drive To Beautify

street; Beta Theta Pi: area around house and parking along Elm street and along University avenue near the house; Tri Delta and Alpha Phi: area around respective houses and along Elm street as well as both corners on Sixth street; Lindley hall: area around hall and science building; Kappa Kappa Gamma and Sigma Chi: area around houses and areas around home management house and music practice hall.

Delta Tau Delta: area around house and area in front of Morrill hall; Willis Sweet hall: area around hall, corners of Dairy Science building and U.C.B.; Chrisman hall: area around hall and a detail of men for area around Memorial gym; Idaho club and Campus club: area around halls; Kirtley lab, and a detail of men for area around Memorial gym; Pine hall: area around hall and cafeteria.

Civil Engineers Inspect Projects

"City Planning" was the theme used by Henry Aumuck, Spokane city planning engineer, at a banquet sponsored by Civil Engineering students from five Northwest colleges held recently at the Davenport hotel in Spokane.

Thirty potential Civil Engineers from Idaho attended the banquet after inspecting the water plant and the aluminum rolling mill constructing projects.

Picnics Held

Two engineering groups held picnics last weekend in the Lewiston area.

The American Institute of Electrical Engineers held their annual Steak fry at Spalding park Sunday with about 40 couples attending.

Mechanical Engineers also held a picnic at Clarkston on Saturday. The group is planning another picnic after their return from a field trip to Seattle, Washington.

For Quick, Efficient Shoe Repair Service, Laces, Shoe Dyes and Polish.

STEWART'S Shoe Repair Service

500 1/2 So. Main

MAKE YOUR APPOINTMENTS ON TIME. GET A Neely's RADIO TAXI

DIAL 4111 524 S. Main

RECORDS "HITS OR CLASSICS" Phone 2461 MAC'S

TESTS FOR TEACHERS The Los Angeles city school department has announced that examinations will be given soon to applicants interested in teaching the first three grades of the elementary schools.

ATTENTION Students who plan to attend Summer School For your convenience the CAMPUS CAFE will be open all summer.

Veteran Enterprises Direct Sales "Owned and Operated by Students—for the Students" By Request—We Are Extending Our Sale for 10 Days for Convenience of Those Who Were Awaiting the Eagle!

- Crampton Corduroy Sport Jacket
- 3-Button Model
- Fully Lined
- Expertly Tailored
- Satisfaction Guaranteed

Now Only 14.95 (Save \$3 to \$5)

PHONE 26-531 for a Fitting, or Write

VETERANS ENTERPRISES DIRECT SALES (F29) 324 South Monroe Moscow, Idaho

Gentlemen: Please send me POSTAGE PAID Cord Jacket(s) size..... long regular . I want maroon gray brown aqua sky blue tan . I enclose my check money order for..... Rush my jacket(s) today.

Name..... Address.....

REGISTRAR REVEALS GRADE PROCEDURE

All students wishing to receive their second semester grade reports must leave at the Registrar's office before June 10 a large, letter size, self-addressed, stamped envelope.

The reports will be furnished on unofficial copies of the student's entire university record to date. If you fail to leave an envelope as indicated above, only official transcripts can be issued for which the regular price set by university regulations will be charged.

Reports will be issued alphabetically during the summer as the grades are recorded. The first reports should be ready about July 1 and the last will be mailed shortly after August 17.

Idahoan Slated To Teach Germans

Bringing American home economics training to occupied Germany will be the job this summer of Miss Florence Schultz, county home demonstration agent at Twin Falls.

President J. E. Buchanan of the University of Idaho announced today that Miss Schultz had been granted a four-month leave of absence effective May 1, subject to formal approval by the board of regents.

The Idaho home economist will serve as a visiting instructor on the staff of the Office of Military Government of Germany. She will participate in the home economics training project of the Wuertemberg-Baden area.

Phyllis LaRue, Heyburn, Home Economics Major, Hoping To Transfer Here From Boise Junior College Last Year. The I club and Scabbard and Blade number as his activities.

Phyllis LaRue, Heyburn, home economics major, is a junior and lives at Hays hall, acting as vice president there. She is Kappa Phi prexy, Phi Upsilon Omicron president, vice president of Wesley Foundation, and has been in Spurs and Vandaleers.

Dick Geisler, Rigby, past vice president of the LDS house, is a junior in the school of agriculture. He has lettered on the varsity basketball squad for the last two years, and belongs to Alpha Zeta and I club.

Pete Wilson, Coeur d'Alene, is majoring in law, a junior, and lives in the ATO house. He belongs to the International Relations club, and Greek caucus. He has also done some writing for the Argonaut, announcing for KUOI, and has held house offices.



BELL TELEPHONE SYSTEM

Spring Flowers Dominate House Dance Decorations

"Gardenia Swirl" was the theme of the Pi Beta Phi initiation dance Saturday, with gardenias being presented to each of the new initiates. Delta Tau Delta and Phi Kappa Tau fraternities also held spring dances last weekend, decorating their houses with spring flowers.

An Easter party for children of Moscow alums was given Sunday by Alpha Chi Omega.

Sunday dinner guests were Mr. and Mrs. George Greene, and Dean and Mrs. Allen S. Janssen. The annual Easter party for children of Alums was held Sunday afternoon.

Plans are being made for celebration of the Twenty-fifth anniversary of the Idaho chapter on May 9. A buffet supper will highlight the events for alums from all over the state.

Phi Kappa Tau
Beth Foster was a Sunday dinner guest.

Guests for dinner on Wednesday were Mr. and Mrs. Jim Hunt and Gary Nefzger.

Bryan Brunzell was general chairman of the spring dinner dance on Friday evening at the Legion Cabin. Decorations carried out a Red Carnation theme. Dr. Frederic Church was patron for the dance.

Delta Gamma
Plans are being made for the annual senior breakfast, which will be held Sunday, with Gretchen Helmsworth in charge of arrangements.

Weekend guests were Gladys Gilbertson, Marion Mills, Jo Horton, Maybelle Harris, Ruth Gochour, Sharon O'Donnell, Kris Madison, and Donna Chubb.

Delta Chi
Guests for Sunday dinner included Mr. and Mrs. Martin Luther, Mr. and Mrs. Watt Praeger, Jeanne Cox, Arlene Hinchey, and Hardy Lyons.

Kenny Giles, Orland Crooks, and Dale Eckhart were Wednesday dinner guests.

The annual picnic has been planned for Sunday, with Sid Werry and Wally Pohlod on the picnic committee.

Pi Beta Phi
Sunday guests for dinner included LeRoy DePalma, Cal Jones, Kitty Wallace, and Tally Brown.

Eleanor Paulson, Laura McVicker, Rosemary Harland, Carolyn Jenkins, Dean Louise Carter, Marjorie Lampan, Lou Driggs, Carolyn Craddock, and Mrs. John Draper were guests for dinner Tuesday evening.

Barbara Richardson, Orofino, was a weekend guest.

Green and white crepe paper decorated the walls for the annual initiation dance Saturday, at the chapter house. The theme was "Gardenia Swirl," and gardenias were presented to each girl. Corrine Schumaker was general chairman, assisted by Beverly Brainard and Renie Sims, decorations and Patsy Adams, invitations.

The Founder's Day dinner was held Wednesday evening, with Mrs. John Draper, Province President visiting the chapter, as special guest. Mrs. Draper was a house guest during the past week.

Delta Tau Delta
Jerry Higley was a Sunday dinner guest.

Patrons and patronesses at the annual spring formal and banquet Friday were Dean and Mrs. Allen Janssen, Mr. and Mrs. Mark Ware, and Captain and Mrs. Conrad Underdahl. The chapter house was decorated with boughs of cedar and flowers, picket fences, and an indoor fountain. The dance with orchids and pencil favors, was completed by music from the orchestra of Norm Herzinger.

An informal fireside is planned for this evening, with the dress to be sport, and no shoes, just stockings. Bob Peterman is in charge of arrangements, and refreshments will be served.

Kappa Kappa Gamma
Thursday dinner guests were Dean and Mrs. H. E. Lattig, and Jim Geddes.

Sigma Chi
Guests for Sunday dinner were Lois Messerly and Dr. H. H. Whithead.

Kappa Delta Pi Initiates Members Wednesday Night

Twenty-three were initiated into Kappa Delta Pi, education honorary, at a banquet held Wednesday evening at the Idaho Ad club.

Initiated were Ward Alexander, Elaine Andros, Sue Beardsley, Charles Brizze, Ethlyn Calcote, Arthur Chatham, Keith Coble, Jean Dammarell, Shirley Denman, John Evans, and Gwendolyn Giggs.

Others initiated were Joseph Groves, Valeta Hershberger, Virginia Hansen, Clarice Hove, Jack Jones, Harold Klobucher, Leslie Larsen, Virgel Larson, Albert Martin, William Mills, Carl Munson, and Raye Adele Tremewan.

Fraternity Presents Gifts
Dr. Wayne Walter Smith, associate professor of education and director of student teaching, was honored guest and Charles William Eimers, president of Kappa Delta Pi, was toastmaster. Eimers introduced President J. E. Buchanan, who spoke briefly. Dean J. Frederick Wetzlin of the school of education traced the history of the education school since 1928, when Dr. Smith first joined the faculty.

Dr. Smith was presented with a leather brief case and he responded with a short talk. Also presented Dr. Smith was a white carnation boutonniere. Mrs. Smith was given an orchid.

Westminster Forum
The Forum will meet at 5 p.m. Sunday at the Presbyterian church. A regular dinner meeting will be held with special recreation and final work on the project booklet.

Plans are being made for a Senior banquet. A square dance party will be held Friday May 13, in Pullman, with the Washington State forum.

Inter-Varsity Fellowship
The group will meet at the home of Mrs. Alma Keeling, 1308 S. Deakin St. at 7:30 p.m. this evening, for an hour of Bible study and fellowship together. The topic of discussion for the evening will be Chapter 14 of the Gospel of St. John.

At a recent meeting, the following officers were elected for the coming year: president, George Haugland, vice president, Harry Howard, and secretary-treasurer, Bill Driver.

First Baptist
There will be a pot-luck dinner after morning services Sunday and all First Baptist students are invited to attend.

The Roger William club meeting scheduled for Sunday afternoon at 5:00 has been postponed till a later date.

WRA Board Given Formal Initiation
WRA officers and individual sports presidents took their formal initiation oath at 7:30 last Tuesday evening in the women's "T" club lounge at the gym.

Valeta Hershberger was installed as president; Jane Fisk, vice president; and Pamela Gaut, secretary-treasurer.

Club president taking the rites include Joan Litchfield, volleyball; Marjorie Johnstone, basketball; Ann McKay, swimming; Betty Biker, tennis; Elsie Krey, badminton; and Jean Wardell, field hockey.

Main topic of the executive board meeting before initiation ceremonies was the proposed WRA pamphlet to be distributed among freshmen women and new students next year. Jane Fisk, chairman of the publication committee, presented an outline of the book to the board.

Many People Attend AEE's 'Steak Fry'
Approximately 80 people attended the picnic and "steak fry" sponsored by the associated electrical engineers held at Spaulding Park last Sunday.

The annual softball contest between the Junior and Senior classes was staged during the early part of the afternoon. Officials for the event were "Pete" Grant and Professor Mann. Final score—Seniors, 20; Juniors, 11.

Tau Kappa Epsilon
Sunday dinner guests were Pat Colvard, Joanne Paulsen, and Jo Horton.

The annual spring formal will be held tomorrow evening at the chapter house. Lilies will be used in the decorations, and Stan Riggers is general chairman of the affair.

Hell Diver's Show Cast



Part of the cast for the Hell Diver's "Porpoise Promenade" water show are pictured making final arrangements. The show will be held in the Memorial gym swimming pool and admission is set at \$.50. This water show is to be an annual presentation by the organization and this year's event promises to be well worth seeing. From left to right are Ed Flester, Director, Jim Farmer, Eric Kirkland, advisor, Jo Korter and Jan Garber.

Iowa Teacher Will Be Head Of Idaho Research Project

Directing Idaho's phase of the new five-state research project in dairy cattle breeding will be Walter R. Harvey, at present a member of the agricultural faculty at Iowa State college. Appointment of Harvey as associate dairy husbandman at the University of Idaho college of agriculture was announced today by President J. E. Buchanan, following approval by the university regents.

Effective September 15. Shortly before coming to Idaho he will have received his doctor's degree at Iowa State. He has studied in the fields of dairy husbandry and animal breeding. At present he is teaching animal breeding and dairy cattle judging at the Iowa institution. He is also doing special research under a grant from the American Jersey Cattle club.

A graduate of dairying from Oklahoma A & M, Harvey was a member of the student judging team that placed fifth in competition at the national dairy show.

Delta Chis Hold Regional Confab
The Washington State chapter of Delta Chi was host to the Pacific Northwest regional conference. Delegates attended from the University of Washington, Oregon State university, University of Idaho, and Washington State college. Idaho delegates were Clarence Johnston, Ellwood Werry, Don Whiteman, Frank Gaylord, Del Klaus, Gene Allen, Harold Gerber, and Dan Pedersen.

The conference was concluded with a banquet. Norm Smith, president of the Washington State chapter, introduced toastmaster Lou Armstrong, member-at-large of the National Executive board, who presented the WSC chapter with the national scholarship cup. Songs were led by Walt Carstens.

WSC seniors extended an invitation to conference delegates to attend the Senior Ball.

Beneficial Beetles Enlisted To Combat Idaho Goatweed

Four test plantings of St. Johnswort beetles have been made in Idaho and Nez Perce counties by the university agricultural experiment station. These are the bugs that will starve to death before they will eat anything but St. Johnswort, known also as goatweed and Klamath weed.

Natural Control Agents
Determining whether the beetles will readily establish themselves in Idaho is the first step in a research study to find out how much help can be expected from them in actual control of one of the most serious and rapidly spreading range weeds in Idaho. Cooperating in the study are the entomology, agronomy, and animal husbandry departments of the experiment station and the division of beneficial insects of the U. S. Department of Agriculture.

"In both California and Australia these beetles are giving good accounts of themselves in St. Johnswort control," stated W. F. Barr, assistant university entomologist. Barr and Clarence I. Seely, special weed research agronomist who has worked on the chemical phases of goatweed control, are directing the colonizing tests.

Start Test Colonies
Test colonies will be started in all areas of major infestation. St. Johnswort, or goatweed, Seely reports, is widely distributed from the Canadian border to southern Idaho and from the state's lowest ranges around Lewiston to its highest in the Bitterroots. Wherever a test colony thrives, Seely will attempt to develop a large number of additional colonies in the area to achieve actual control.

Art Students Plan Trip To Spokane
Sixteen University of Idaho commercial art students will visit Spokane printing and advertising concerns May 4 as part of an annual field trip, Alfred C. Dunn, university professor of art and architecture, announced today. Students will visit engraving

plants, lithographing plants, and advertising agencies to see the actual work which they have been studying in magazine and newspaper advertising.

Patronize Argonaut Advertisers!

Kenworthy

STARTS SUNDAY



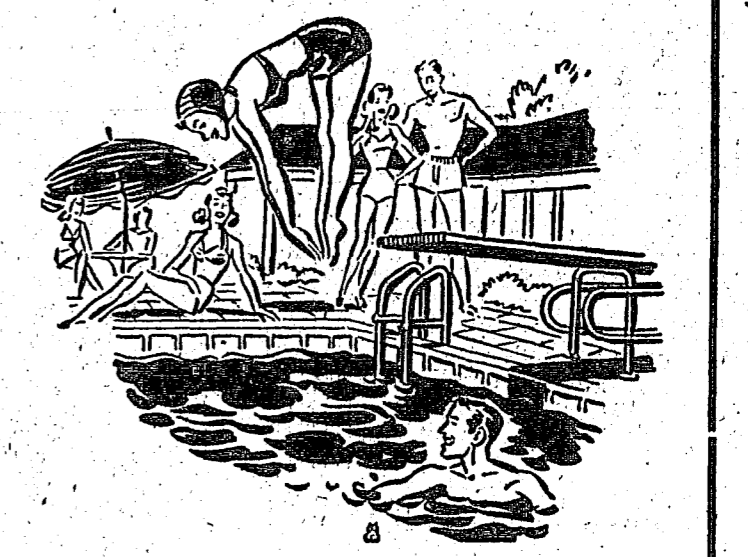
NUART

STARTS SUNDAY



FOOT HEALTH NEEDS
For All Good Things In Shoe Repairing, Laces, Dyes, Polishes
NORMAN'S SHOE REPAIR
114 East 3rd St.
Closed Saturday Afternoons

COME ONE, COME ALL!!



WATER CARNIVAL

STARTS TONITE — 8 P. M.
April 29-30 In University Pool
SPONSORED BY UNIVERSITY HELL DIVERS EXHIBITION SWIMMING AND DIVING
PLUS OTHER ATTRACTIONS
Admission: 50¢ per person

Patronize Argonaut Advertisers

NOBBY Inn
UNIVERSITY OF IDAHO

DAVIDS'

present

some like them dark

some like them light

Everybody loves our famous Sacony summer suits—the only women's suits of cool, crisp Palm Beach*. See the new 1949 editions today! Only 25.00—it's a wonderful buy!

the only woman's suit of Palm Beach*

Editorially featured in Good Housekeeping and advertised in Life, Charm and Glamour

\$100 Scholarship For Entomologists

Because sheep on the Idaho ranges are less troubled with ticks, some outstanding student in entomology during 1948-49 at the University of Idaho will receive \$100.

President J. E. Buchanan announced today that a list of gifts formally accepted by the board of regents contains the \$100 award provided by Mr. and Mrs. Robert M. Naylor, operators of the Highland Livestock and Land company. The Naylors became interested in furthering the work of the university entomology department following recommendations and assistance by the department in sheep tick spraying and also in alfalfa insect control.

Mrs. Naylor, the former Jessie Little, is a graduate of the university.

Also accepted by the regents was the rights to the song lyric, "Idaho" which were given to the university by the composer, Frances C. Burger, Schenectady, N. Y.

Sigma Chi Burn Mortgage



Marking its 25th anniversary as a member of the national order, Sigma Chi fraternity burned the mortgage to their Idaho avenue chapter house last weekend. Here Howard Reinhardt, past chapter president, places the mortgage which C. A. Hagen, left has just set fire to, into a dish to burn. Hagen is a pioneer Moscow business man and charter member of the local chapter. Dwight Akers, center, present chapter president, looks on. Chapter alumni from throughout Idaho came here for the weekend festivities.

America's Heritage

HOSPITALITY

AND

GOOD FOOD

★ STEAKS ★ SANDWICHES

Varsity Cafe

All eyes are upon you—
So look your best on every occasion.

VALET CLEANERS

leers
jects
was the theme
umuck, Spokane
gineer, at a ban-
Civil Engineer-
five Northwest
cently at the
in Spokane.
Civil Engineers
ded the banquet
the water plant
um rolling mill
acts.
ld
ng groups held
end in the Lew-
Institute of Elec-
held their annual
dding park Sun-
40 couples at-
gineers also held
on Satur-
er their return
to Seattle, Wash-
fficient Shoe
e, Laces, Shoe
ish.
ART'S
ir Service
o, Main
e selection of
mounted in
nge Blossom
e your choice
Low Priced
n Shop
ht!
e in her
e know
ep right
er year.
e of time,
elephone
-free as
y at the
ere, for
instru-
of hard
e given
bottom
esigned
will not
all as on
d's best
ossible

Attend The "LITTLE INTERNATIONAL" Livestock Show!

The University of Idaho Students Exhibit of Progress In Agriculture Will Be Presented Saturday - University Field House

Downtown Parade At 1:30 P.M.



Cecil Alldaffer, manager of this year's Little International, crowns Beverly Bressler queen of the event during intermission of the dance in Memorial gymnasium Saturday night which started off a week of activities to be concluded by a parade Saturday. The other two finalists in the queen contest, Marilyn Anderson, third from left, and Irma Troutman, far right, also received awards from Alldaffer and will reign as princesses over the show.

The livestock for showing was allocated by drawing six weeks ago to individual students. For the past six weeks each student has been preparing his animal for the great show. Trophies and other awards will be made on the basis of the student's ability and technique in exhibiting under actual competitive conditions.



Queen Beverly Bressler (center) of Genesee and her princesses, Erma Trautman (left) of Meridian and Marilyn Anderson (right) of Moscow, preside over 1949's agricultural show. They were elected by the Ag club from a slate of eleven Idaho women presented by the women's living groups.

For many days the university's college of agriculture students have been preparing for this Saturday . . . the climax of the 23rd annual "Little International" Livestock Show. Prize animals will be fitted and shown by the students Saturday morning in the newly completed Field House.



The pig isn't interested, but this group of eager students is deeply engrossed in the drawing of numbers for choice animals to fit and show at the 23rd Little International Livestock show. Manager of this year's show is Cecil Alldaffer, on the far left, who is shown supervising the drawings. Over 150 students of the Ag school have taken part in the 19 contests to be held this year. Those waiting their turn to draw are, from left to right, Cecil Alldaffer, Don Wagoner, Bud Torrell, Ralph Hart, Harold Johnson, Frederick Troch, and Howard Morton.

A parade of the beautifully-fitted stock and floats designed and built by every department of the college of agriculture will be held downtown starting at 1:30 p. m. Awards will be presented during the final evening program at the Field House beginning at 7:15 p. m. The public is invited and there is no admission charge.

This Page Contributed by the Following Civic Minded Firms and Individuals

LATAH CREAMERY
MOSCOW COMMISSION CO.
STATE TRACTOR & SUPPLY
EVERETT WILL TRACTOR CO.
HELBLING BROTHERS

VAL'S SEED SERVICE
WASHBURN-WILSON SEED CO.
IDAHO DAIRY PRODUCTS
MOSCOW MACHINE SHOP
C. M. WILDERMAN CO.

INLAND MOTOR CO.
DANIEL MOTOR CO.
KENBY AUTO & TRACTOR ELEC.
FRANCISCO MOTORS
PHILLIPS & HART MOTOR CO.

Sigma Chi, Kappas Take Top Scholarship Honors

Kappa Kappa Gamma and Sigma Chi took top honors for scholarship during the first semester with a 2.93 and 2.62 average, respectively. The average of all Greek-letter students was 2.41, topping the 2.39 average of all non-Greek residence groups. Sorority women topped the non-Greek women's residence groups 2.72 to 2.53, while the fraternity men made 2.25 to the non-Greek's 2.36.

As a rule, members in the Greek living groups maintain a higher average than the pledge class, but exceptions to this were Alpha Chi Omega, Pi Beta Phi, Alpha Tau Omega, and Beta Theta Pi.

Women's Averages
 Women's living groups and their averages are Kappa Kappa Gamma, 2.93; Kappa Alpha Theta, 2.78; Delta Gamma, 2.77; Alpha Phi, 2.74; Tri-Delta, 2.64; Forney hall, 2.614; Alpha Chi Omega, 2.612; Pi Beta Phi, 2.6; Gamma Phi Beta, 2.568; Hays hall, 2.565; and Ridenbaugh hall, 2.32.

Men's living groups and their scholastic averages are Sigma Chi, 2.62; Chrisman hall, 2.55; Lindley hall, 2.53; Alpha Tau Omega, 2.45; Willis Sweet hall, 2.418; LDS Institute, 2.415; Campus club, 2.39; Delta Tau Delta, 2.38; Delta Chi, 2.37; Phi Gamma Delta, 2.36.

Other men's averages are Phi Delta Theta, 2.32; Pine hall, 2.26; Kappa Sigma, 2.22; Phi Kappa Tau, 2.18; Beta Theta Pi, 2.14; Idaho club, 2.09; Sigma Nu, 2.067; Sigma Alpha Epsilon, 2.065; and Tau Kappa Epsilon, 2.06.

NSA Believes Aid Should Be Given Foreign Students

The National Student Association believes that there should be a constructive social and financial aid program on the Idaho campus for the benefit of the increasing number of foreign exchange students enrolled at the university, according to Bob Dahlstrom, NSA president.

Twenty-eight foreign exchange students are now attending the University of Idaho, and there is as yet no program to assist them in getting acquainted with the university and the American way of life.

Suggests Working Together
 To assist foreign students, NSA recommends:

1. That each living group try to find some sort of employment, such as furnace boy, taking care of the walks or lawns, or hashing jobs, for an exchange student.
2. That, in order to provide a more complete social program, we work cooperatively in extending invitations to dinners, informal chats, and similar social functions.
3. That we work together in getting free board and room for those exchange students who need it most.

Mining Is Choice Of Early Graduate

William LaVerne Zeigler, 1910, is general manager for the Pend Oreille Mines and Metals company and the Reeves-McDonald Mines, Ltd. The Zeiglers live in Metaline Falls, Washington. After his graduation, Zeigler was a consulting and construction engineer for metallurgical plants until 1923 when he accepted the position of superintendent of mills for the Hecla Mining company. During the next 25 years, in addition to his duties with the Hecla company, he was consulting metallurgical engineer for mining companies all over the world. Zeigler entered the preparatory department of the university in 1904 and received his B.S. in 1910.

Ballroom Filled To Capacity For Song Fest Eliminations

The large ballroom of the Blue Bucket was filled to capacity both Wednesday and Thursday evening to hear the song fest eliminations of the women's and men's choral groups.

Judging the women's choral groups Wednesday were Glen R. Lockery, Ruth Erickson, and Norman R. Logan. The same judges served for the men's choral group elimination last night.

The winning women's groups, listed in the order in which they appeared, are Alpha Chi Omega, "Firelight Serenade" and "A Thought Like Music"; Delta Delta Delta, "Delta Night of Love" and "Madame Jeannette"; Delta Gamma, "Do I See an Anchor" and "The Nightingale"; Hays' hall, "Someday I'll Find You" and "The Shepherdess"; Kappa Alpha Theta, "Dream of Love" and "Tomorrow"; and Kappa Kappa Gamma, "Oh, Peddler Tell Me" and "Hark the Vesper Hymn Is Stealing." Among the men's living group

Work Completed On First Section Of Field House

The first unit of Idaho's long-awaited field house is completed. Three more units of similar size will be added onto the structure and at its completion, the huge building will measure 400 feet in length and 175 feet in width.

Although the first unit has been finished with aluminum siding, enough extra space was allowed on the foundation for a brick veneer, if that should become desirable.

The construction began late last summer. Record - heavy snows slowed, but failed to halt the construction of the building, said to be, when completed, the largest prefabricated structure in the west. A field house of comparable size and construction was completed last fall at the University of Minnesota.

50 Foot Clearance
 Ceiling clearance above the practice field is 50 feet, while the overall height from ground level to the top of the bowstring trusses is 75 feet. The floor, bare now, will be covered this summer with a 6-inch mixture of sawdust, sand, and oil.

Something new in prefabricated construction in the Northwest, the field house employs the products of two major Northwest industries, lumber and aluminum. The heavy Douglas fir wood roof consists of 175-foot bowstring trusses which were cut to specifications at the mill and assembled on the ground before being lifted by crane to the top of stout, 50-foot wooden columns.

Early Is Awarded Journalism Honor

Geraldine Early has been chosen as an "outstanding woman graduate in journalism" from the University of Idaho in 1949. Olive May Cook, president of the Idaho Press Women, announced today. As a winner of the honor, Miss Early will receive a gold emblem pin from the Idaho group and the National Federation of Press Women at the university's commencement exercises.

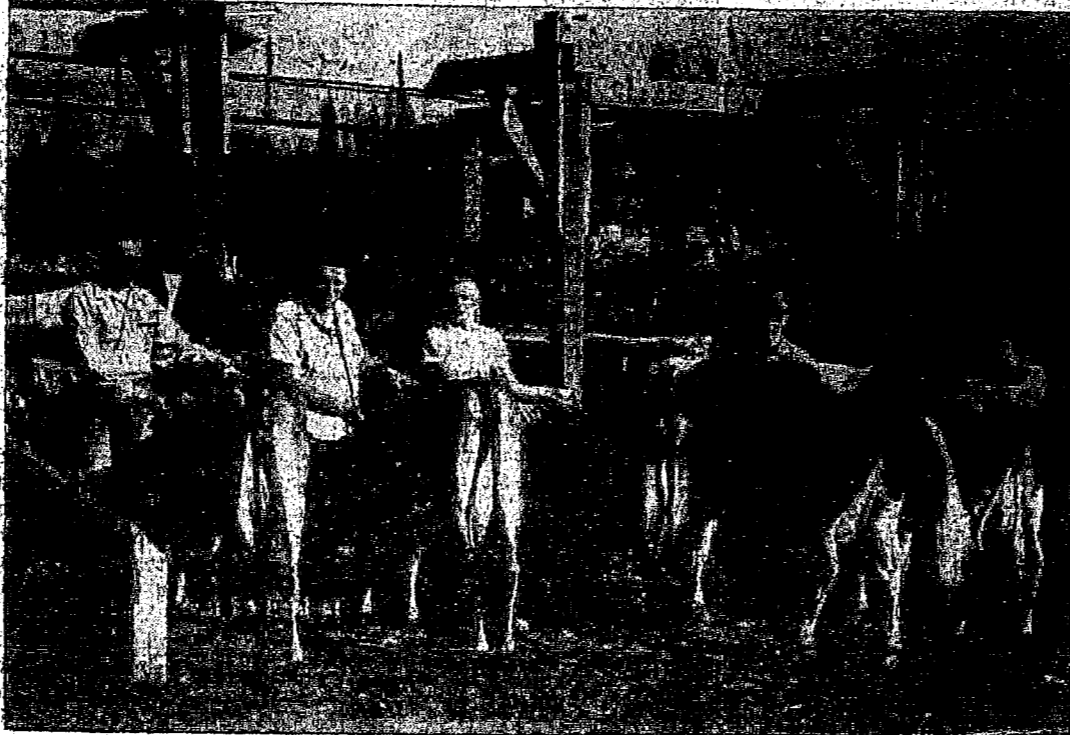
President J. E. Buchanan of the university will make the presentation. On the committee selecting Miss Early were Paul T. Scott, professor of journalism at the university, and Louis A. Boas, editor of the Daily Idahonian. According to the citation, Miss Early is highly skilled as a news reporter and as an advertising consultant and salesman. However she does not plan to enter active newspaper work after graduation. Professor Scott reported she had prepared herself to teach journalism and English in high school. She is a member of the Delta Delta Delta sorority.

Music Honorary Takes Nine Men

Nine men were initiated into Phi Mu Alpha, national music honorary, Sunday afternoon, April 24.

Initiates are Ralph Fothergill, James Geddes, Wallace Johnson, Jerald Haegle, John Schaplow-sky, Edwin Meyer, Norman Herz-zinger, Calvin Long, and Bernard Strobbenn.

Ag Students Prepare Animal Entries



Throughout the university farm area, students are busy preparing their selection of animals which they are fitting and showing in the Little International show this week. Floyd Gephart, Nick Plato, Francis Flerchinger, Doug Cook, Harold Johnson, and Bill Choules ready their charges for the Saturday showings.

Russian Duo-Piano Team To Conclude Season's Community Concert Series

Vita Vronsky and Victor Babin, Russian duo-piano team will appear in Pullman Monday night in the next to last of the Community Concert series. Their American debut was February 14, 1937. They are considered foremost artists of their kind, and have been cheered by New York critics.

This team gave concerts in large eastern cities, following their debut, and in the course of four weeks they appeared on the national networks four times.

Fly To Pullman
 Vronsky and Babin are flying to Pullman Monday from Monterey, Mexico, for the concert, which is the replacement for the Hazel Scott performance.

Their program includes "Sonata in D Major" (Allegro con spirito, andante and Allegro molto) by Mozart; "Fantasia, opus 5," by Rachmaninoff; "Rondo, opus 138" (Our Friendship Constant) by Schubert; "Pour l'Egyptienne" by Debussy; "Lezginka" by Katchaturian, arranged by Babin; "Hora Staccato" by Dinicu-Heifetz; "Waltz" from "Eugene Onegin" by Tschalkowsky, arranged by Babin.

Yeend Performs May 15
 The last Community Concert will be in Pullman, May 15, with Frances Yeend performing.

There will be bus service to Pullman Monday night. Tickets cost 50c per round trip. Buses will leave Hotel Moscow about 7 p.m.

LSA Group Asked To Lutherhaven
 The Idaho Lutheran Student's association has been invited to attend a retreat at Lutherhaven on Lake Coeur d'Alene with the WSC group on May 14 and 15. Students interested in going should contact Norman Pabst at the Campus club for further information.

Tickets for the annual Lutheran Student's banquet, May 3, are now being sold on campus, and will be sold at the picnic Sunday. Election of officers is scheduled to take place just before the banquet, with additional nominations coming from the floor. Unpaid dues and Lenten penny-a-meal boxes should be brought to the banquet by those attending.

Any student wishing to reserve rooms for relatives may do so by leaving his name, telephone number, and accommodation needs at the alumni center.

"Why, mother, what makes you think it was cold out on the porch last night?"
 "I heard you tell your boy friend to keep his shirt on."

IT'S PICNIC WEATHER

For that picnic get-together serve everybody's favorite nutritious ICE CREAM. Choose one or several of our many flavors in pint, quart or gallon packages.

ICE CREAM BAR

T-SHIRT PARADE

Variety Colors

SPORT SHIRTS U.S.N. WHITES
 99c 69c
 Taped-Neck Type Small, Medium, Large

TRI-STATE DISTRIBUTORS
 319 S. Jackson Phone 6026

Nine New Researchers Add To Idaho's Wildlife Staff

Nine new members were added in one day to the staff of the Idaho Cooperative Wildlife Research unit at the University of Idaho. New researchers are pointer puppies, and eight now are more interested in scrambling for position at the dinner table than in helping take bird censuses.

Mother of the puppies is Jill, who is officially on the wildlife staff as a census taker. Father is Mark, "ex-GI" who served with the Canine Corps in World War II, and is owned by Franklin H. Pitkin, school of forestry nurseryman.

Jill Leads Unit
 Jill was presented to the wildlife unit a year ago by Harlow H. Campbell, director of educational field services. Even as a two-year-old, the dog proved herself a valuable member of the staff during the last year, said Dr. Paul D. Dalake, leader of the unit.

"The use of dogs is the most effective method known today for taking a game bird census," said Dr. Dalake. He formerly worked under the late Dr. H. M. Wight of the University of Michigan, who pioneered the system of using dogs.

Have Frisky Helpers
 Leslie Pengelly, wildlife management instructor, who has done extensive work in the field with Jill said that "she has flushed as many as 30 birds from brush that humans passed by without creating a stir."

"Being young, she was sometimes too eager," added Pengelly. "One or two occasions, she didn't bother to point, but went out and caught pheasants on the run. She should have much more know-how in census-taking this year and there are a lot of frisky helpers coming up."

FIRST AWARD
 First scholarship award under the Kellogg Foundation fund at the University of Idaho goes to Betty Jean Brookbush Lash, 1948. Mrs. Lash is interning in medical technology at the Dee Memorial hospital in Ogden, Utah.

Continuing the band's portion of the program, John Stetely will conduct his arrangement of "Lento" from "Two Perrot Pieces," by Scott. Student conductor Jack Perciful will mount the podium to conduct his arrangement for band of McDowell's famed "To a Wild Rose."

Wallace Johnson will again take up the baton for the two concluding numbers, the first of which is another of his compositions, entitled "The Butterfly." The final number is an original march by Kermit Hosch, professor of music. The composition is entitled "Parade March."

Patronize Argonaut Advertisers
Whitman Small Car Sales
 201 S. Main Phone 731
 "Your Crosley Dealer"
 COLFAX, WASHINGTON
L. G. Balfour Co.
 Your Official Fraternity & Sorority Jeweler
 Brides, Rings, Keys, Cups, Trophies, Medals, Crested Jewelry, Dance Programs and Stationery
 First National Bank Bldg.
 Jack Propstra, Mgr.
 Pullman, Phone 5551

Saunders To Speak To Hygiene Society

Miss Helen Saunders, child guidance expert and social worker, will address the Mental Hygiene society May 3. The subject of her address will be special case histories, with emphasis on significant aspects of each. She will also describe a child guidance clinic as used by social workers.

The meeting will be in the upstairs lounge of the Blue Bucket at 7:30 p.m. and will be open to everyone.



Thrill Your Mother with a box of "Society" or "Helen Ardel" Chocolates from ROLLEFSON'S GROCERY

No Fooling!

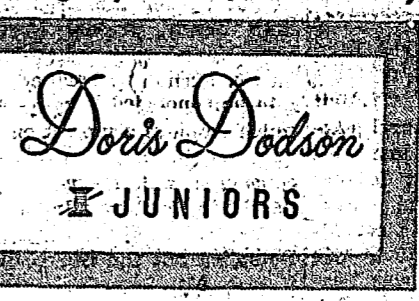
Most students are getting their washables laundered and dried for \$2.00 a month.

Why Don't You Try

THE WASHERETTE

325 West 3rd Phone 25-621

you're in clover wearing this highly complimentary



as seen in VOGUE HARPER'S BAZAAR MADEMOISELLE

"THE WINNER" is a glad plaid, a plaid by Lonsdale designed by Doris Dodson. As many as thirty darts release the fullness of the dirndl skirt. A new sleeve puts attractive gathers across the shoulders. Neat calfskin belt adds an important color accent. Sizes 9 to 15

Green • Copper • Royal Blue \$2175
 Other Doris Dodson Juniors from \$10.95

CREIGHTONS

V. N. Ramstedt Allen S. Ramstedt

Serving Coca-Cola Serves Hospitality

Ask for it either way... both trade-marks mean the same thing.

BOTTLED UNDER AUTHORITY OF THE COCA-COLA COMPANY BY EMPIRE COCA-COLA BOTTLING COMPANY Coeur d'Alene, Idaho—Lewiston, Idaho © 1949, The Coca-Cola Company

Baseballers Tackle NICE In Lewiston Tilt Tonight

Vandals Lose 10-2 On WSC Diamond

Resting deep in the conference cellar by seven straight losses, the Vandal baseball squad hopes to restore their shattered reputation with an entry in the win column when they take on the NICE Loggers at 8 p.m. tonight in Lewiston.

The Loggers are riding the crest of a seven-game winning streak which includes wins over Montana, Whitman, Gonzaga, and Whitworth.

The Vandals resume conference play next Monday and Tuesday at McLean field against the University of Oregon. Game time for both days is 2:30.

Unable to connect consistently, the squad fell before last year's champions, Washington State, 10-2 Tuesday in Pullman. The loss extended the Vandal losing streak to seven in conference play.

Two homers clouted by first baseman Gordy Brunswick proved to be the margin of victory, for it was the long drives that set the stage for Washington State in their fifth conference win.

Seven Vandal losses The win enabled the Staters to remain in second place behind Oregon in the northern division, Pacific Coast conference ladder. It pushed Idaho deeper into the cellar with no wins and seven losses.

Dick Styles, the winning pitcher, gave up six hits and went the distance. Idaho's Chuck Triggs was knocked off the mound in the sixth and was replaced by Bob Linck. Together they gave the Cougars nine safe blows.

Two WSC Homers

Brunswick, hitting safely on three occasions in four trips to the plate, including homers in the second and fifth innings with a man on each time, also belted a sharp double to centerfield. Shortstop Nick Stallworth aided the Vandal cause as he collected two singles in four times at bat.

INTRAMURAL

League play in intramural softball passed the halfway mark this week. Each of the four leagues still has one undefeated team, which must naturally be considered the current favorite to win their "pennants." They are: League I, Traller, Village, II, Phi Gamma Delta; III, Idaho club No. 1; IV, Willis Sweet, Hall No. 2.

Wednesday afternoon in the stadium parking field, Lindley hall had a 10 to 3 lead going into the 6th inning. But in the 6th inning their opponents, Pine hall No. 1, caught fire as they made eight consecutive hits and six runs. Four more runs in the last was sufficient to counteract Lindley's two. The final score was 13 to 12 in favor of Pine hall. Meanwhile on the old practice football field, Pine hall No. 3 decimated Campus club No. 1, 13 to 7.

Sweet And Pine Hall

The leaders in league IV, Willis Sweet No. 2, kept their record unblemished as they downed the Campus Club No. 2, 18 to 2 in a 3-inning walk-away. In this league's other game, Pine hall No. 4 won a thriller from Chrisman hall No. 2, 8 to 7. The score was 4-all going into the last inning. Then the Pine nine went into action and registered four in the top half.

The Chrisman men didn't take it lightly and started a rally all their own. They had three runs in and the tying run on third base. All they had to do to tie the game was to move that one man past one more base. They didn't do it and lost the ball game.

The Fijis, leaders of league II, pounded out a 15 to 0 victory over the hapless Cannoneers Monday afternoon. Similarly, the Sigma Nus defeated the Delta Chis, 13 to 0. Then on Wednesday the Tekes got over into the win column with a narrow 16 to 15 win over the Phi Deltas.

Golf Tourney Next Week

The intramural golf tournament for the spring of 1949, will be held Saturday, May 7, on the Idaho course. Tee-off time is 8 a.m.

One 4-man team may be entered by each men's living group. They will shoot 18 holes apiece, and the team score will be the total. Several of the houses are holding individual elimination tournaments to determine their team entries.

All applicants for entry must be into the intramural director's office by noon Thursday.

Horseshoe Tournament
Here are the results of the first

Time Out

By DON RICE

This spring when baseball practice began, Coach Chuck Finley was still too busy looking after the interests of his basketball squad to take much interest in his new charges. As a result, the diamond crew, needing a full-time mentor, called on the services of Doctor Norman Jacobsen, the Vandal athletic physician and trainer. Doc Jacobsen, who already had his work cut out for him, did a very creditable job of coaching the squad, but was doubtless glad to return to his business of patching up the Vandal teams after a rough game. He had a big job on his hands without having to pinch-hit in some other position.

Assistant To Finley?

The main point: why not have an assistant baseball coach, who can take over while Finley is still busy on the basketball court? That would also leave Doc Jacobsen with time enough to take care of the Vandal injuries.

Speaking of injuries, they must be having a rough time on the football practice field. Along with the routine injuries comes the report of one hardy Vandal who ran afoul of a child's bicycle after practice, and had several stitches taken in his head. And then there was St. Ballew, who had such a rough time during scrimmage that later he couldn't get out of the way of a golf ball, and as a result, was laid out cold on the Idaho golf course.

Idaho Swordsmen To Meet Gonzaga

Anyone who hasn't had the opportunity or desire to witness a fencing match yet should change his ways Saturday. When Vandal fencers meet the powerful Gonzaga team they'll be facing an unusually colorful group.

First up for the Zags will be Herb Denny, present Northwest International junior division foil champion. Mario Saccomanno uses a spectacular Italian style fencing which employs a violent emphasis on strength and control of his opponent's foil. He was a semifinalist in Northwest International senior division championships. Rounding out the trio is diminutive, speedy Henry Huttenbach.

Coach Ray Weston of Idaho will use the same team that lost to WSC 6-3. The team changes captains for every meet; this time it will be number one man, Val Yurichenko. He'll be joined by regulars Bob Munson and Walt Ward. Weston expects a rough, interesting afternoon but pessimistically adds that it will be "at least a good fencing lesson." The match is scheduled for 1:30 Saturday at the Memorial gymnasium.

Golf Practice Links Under Construction

Work has been started at the University of Idaho golf links for a pitch and putt course. The miniature course will consist of nine holes and is open to anyone bent on improving their game of golf.

Five greens have been shaped and Mr. James plans to have the entire course completed in time for the opening of school next fall. With the addition of this course and the recent completion of the club house, the University of Idaho will boast one of the best courses in the Northwest.

Check Name In Gem

If your name is spelled wrong in the student directory and you want it spelled right in the Gem, contact Stanley Tanner or stop in at the Gem office and give them the correct spelling.

A call has been issued by the Gem for pictures of the Spinner Skip. Anyone having any of these photographs is asked to please contact the Gem staff.

CLASSIFIEDS

Wanted: Full time stenographer for NROTC unit. Typing and shorthand required. CAF-2 rating with \$176 base pay to start. Contact Commander Pugh, Navy-building.

round of play in the intramural horseshoe tournament:
PGD 2, DTD 1, WSH-2, SN 1
PH 2, DC 1; BTP 2, SC 1
SAE 2, IC 1; TKE 3, PKT 0
ATO 3, LDS 0

OSC Wins By A Nose



Tense looks on the faces of Idaho and Oregon State cindersmen show the terrific strain which results when the four entrants in a track event all finish within a space of five feet. OSC's Cole (right) stretches the tape across his chest in Saturday's 220-yard dash as he noses out Christian (center) and Armstrong (left) of Idaho. The Vandals pulled out a 67 2/3-63 1/3 win over the Beavers. Next appearance of the Vandal team will be at McLean field tomorrow against the University of Washington.

Cindermen Meet Stiff Test Against Huskies Tomorrow

The University of Idaho track team, victorious over Oregon State last weekend, will run up against a much stiffer test tomorrow when they meet the University of Washington in their third dual meet of the season.

Vandal chances look slim, for two regulars may not suit up for the conference meet. Those two men are Keith Bean, sophomore hurdler, and Warren Johanson, sophomore miler.

Bean has been suffering for some time with an ailing leg, and although he won two events last Saturday as Idaho defeated Oregon State, it is highly probable he would not even be in a suit tomorrow. Johanson pulled a muscle in his side and it was not responding to treatment, according to Hiserman. Johanson won the mile event last Saturday and ran a lap on the winning relay team.

Win-Loss Record Even

The Vandals lost their first meet of the season to the University of Oregon, but on the following weekend evened up matters as they handed Oregon State their first loss of the season. A week prior to the Oregon State-Idaho meet, the Beavers nosed out the University of Washington squad 66-65.

Field events for the meet will start at 1:30 tomorrow afternoon, while the track events are scheduled to begin at 2:00.

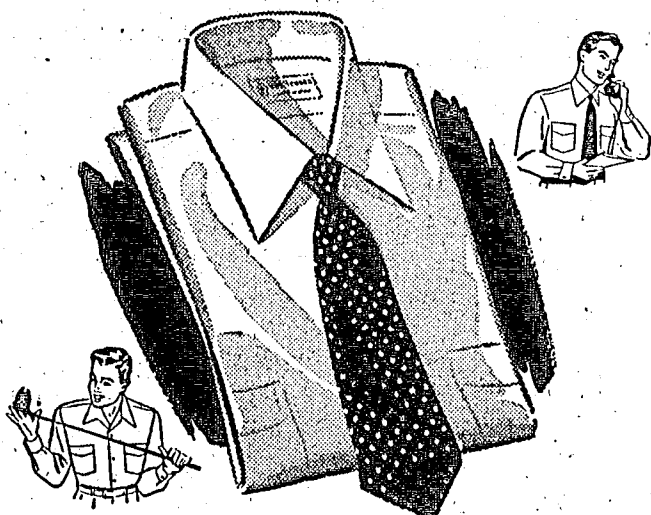
Squad Named

Coach Hiserman named the following men as competitors:
Sprints—Glen Christian, Cal Sparks, and Dick Armstrong.
Mile and half mile—Norm Farnham.
Two mile—Al Denman, John KISS.

IT'S A SHAME

Back in 1897, Butler university women were not allowed to belong to secret societies with young men, because it was suspected that one of the initiation rites was a

introducing—Van Dual



the shirt that knows how to relax!

First, it's a regular shirt—as dressy, as collar-right as any shirt you ever wore. (Naturally—it's a Van Heusen!) But here's the difference: take off your tie and presto—you're leisure-right. For this dual-personality shirt is made to be worn and look correct, either way. That means you can wear it anywhere—any time! See Van Dual at your dealer's, in whites and colors, \$3.95. Other Van Heusen shirts \$2.95 and up.

A new shirt free if your Van Heusen shrinks out of size

Van Heusen® shirts

the world's smartest shirts

PHILLIPS-JONES CORP., NEW YORK 1, N. Y.

Van Heusen Shirts

Are Sold At

MURPHY'S

Ronnie White Cage Trophy Awarded To Pres Brimhall

The Ronnie White memorial basketball trophy, awarded each year to the player considered to be the most valuable and inspirational to the Vandal varsity was awarded yesterday to Preston Brimhall, Idaho Falls, for the second straight year. The announcement of the award came from George W. Greene, director of athletics at the university.

Brimhall, playing his last season for the university, was voted by his teammates as their greatest help and inspiration. Brimhall, also for the second year, was named on the all-northern Division honor team. He played in a guard position and was generally credited with directing the strategy of the team. He is studying law.

The plaque was donated to the university by Sigma Nu fraternity in honor of Ronald W. White, Lewiston. White was a basketball star at the university but was killed in an automobile accident while traveling with the Vandal squad in southern Idaho. Norm Fredekink was the plaque winner in 1947.

Fresh Baseballers Play Kittens Today

Fresh baseball coach Bill Sweet will put his men into action today at 3 p.m. for their first game of the season. It will be a home game for Idaho against WSC's Couabees.

With but one and a half week's practice under their belts Idaho's team members will have a tough cruise against the opponents who have played three or four games already. Battery for Idaho will feature either Lloyd Schiller or Vern Hinkley on the mound and Dick Merrill behind the plate.

Softball Players To Choose Prexy

Election of a softball president will take place on the women's athletic field at 4:15 Monday afternoon, according to Margery Johnson and Betty Peters, softball managers.

The president will automatically become a member of WRA executive board for the coming year. Women's living groups have been contacted in preparation for an intra-mural tournament in May. Team members must attend at least two practices to be eligible for tourney play.

Idaho Netmen Win Whitman Match; Take On UW Next

The Vandal tennis squad put down Whitman college in a conceded match yesterday afternoon, making it their second win for the season. When the rains came, Idaho had three wins to Whitman's one.

Coach Kirkland said the team was definitely improving and he expects some of the future games to have the same outcome as the one just played. He also mentioned that the two wins racked up by the team has instilled a feeling of confidence in them.

Squad Leaves For Seattle Today the squad will leave for Seattle to meet the powerful Washington Huskies. The Huskies, skillful and experienced players, are rated as tops in the northern division this year.

The three net men who won their matches, against the Missionaries were Baxter, Barnes and Dollinger. Dollinger put down Miller (6-4) (6-2). Barnes defeated McKay (6-1) (6-4), and Baxter upset Nightingale (6-4) (6-1). The only Idaho player defeated was captain of the team, Jack Rainey. Penrose beat Rainey (6-3) (6-2).

When it started to rain, Idaho's Rainey and Dollinger were ahead in the doubles match but Cirilich of Whitman was ahead of Idaho's lanky Howard Berger. With the results standing this way, the Whitman team gave the match to Idaho as it started to rain.

Heads Tennis Club

Betty Biker was chosen president of the newly-formed tennis club at a meeting held recently. She will represent her club at an intra-mural tournament in May. WRA executive board meetings next year and will have charge of practices and tourneys within the tennis group.

Young Optimistic Toward Future Of Boxing Squad

Presenting an optimistic picture for Idaho's fistic outlook next season, Frank Young, Vandal boxing coach, spoke to members of the Junior Chamber of Commerce at a banquet at Johnnie's Cafe Wednesday evening.

Young told the members, he will have all of last year's squad returning to bolster Idaho's chances, plus several newcomers up from the "frosch ranks."

One question which seemed to be on the lips of every Idaho fan: "What happened to Herb Carlson?" Young explained it this way:

"Carlson is a human being, not a machine. He has been on top so long, so many movies have been taken of him and he has been No. 1 man for the past two years, so rival coaches were able to study his style and coach opponents to meet him, and him alone. If the opponent is capable, he can capitalize on that kind of training."

"Carlson is not through," Young continued, "and he will be back next year, better and stronger than ever."

Also a guest at the dinner was

NRA Rifle Squad Shoots Tomorrow

Gem State sharpshooters of the N.R.A. rifle club will hold a shoulder match with the American Legion club of Spokane at 1:30 p.m. Saturday, April 30, in the Memorial gymnasium.

Frank Bruins, vice president of the club and Claire Letson, executive officer, will be in charge of the match. Ten shots will be fired in each of three positions, standing, sitting, and prone. Those shooting for the Gem State Sharpshooters will probably include Dean Lenander, Gerald Stearns, Joe Fisher, Jack Fletcher, Frank Bruins, and Alvon Mochel, with Claire Letson and Gerald Van Hardenburg as alternates. Six complete scores will be fired by each team and the five highest scores will be used to determine results of the match.

Len Walker, Idaho sophomore who won national acclaim by winning the national intercollegiate 135-pound title at East Lansing, Michigan.

BEWARE

of wood ticks in your hair—keep it out at the Campus Barber

This is the time of the year to come in and try one of our

CHIP STEAK SANDWICHES

They're Good!

Drive 7 Inn

JOHNNY HELPS TOM PROTECT PRIMOGENITOR'S PROWESS

CAMPUS CAPERS: LIFE N' LEARN

TOM, YOUR RECIDIVISM WON'T WIN YOUR VARSITY LETTER AS MANAGER OF THE BALL TEAM. THAT MEANS POP MAY GIVE YOU A MERE LAGNIAPPE INSTEAD OF A CONVERTIBLE FOR YOUR BIRTHDAY.

WHENCE DOES THIS PUTATIVE ILLNESS STEM?

MY THROAT'S ON FIRE. I FEEL AS IF I COULD USE A FEBRIFUGE.

OH, OH! TOM NEEDS SOME GOOD ADVICE ON SMOKING!

TOM, WHEN SMOKING LEAVES YOUR THROAT RAW AND IT FEELS ON FIRE, IT'S TIME TO SWITCH TO PHILIP MORRIS. YOU'LL WANT TO TACKLE THAT JOB WITH NO CIGARETTE HANGOVER.

time and PHILIP MORRIS really prove something.

TOM, THAT WAS A BRILLIANT JOB OF SCHEDULING HOME GAMES. IT HASN'T GONE UNNOTICED EITHER YOU'RE A TOP CANDIDATE FOR MANAGER.

TOM CERTAINLY SEEMS EUPHORIC!

WELL I'LL GIVE IT A TRY. YOUR PROLEGOMENOUS REMARKS SEEM TO RING TRUE.

YOU COULDN'T GIVE ENOUGH PROLIXITY TO THOSE REMARKS, COACH!

IS OUR POP PROUD OF TOM FOR WINNING OUT AS MANAGER!

JOHNNY SHOWED THE WAY TO NO CIGARETTE HANGOVER SO HE GETS THE FIRST RIDE IN THE NEW JOY-BOAT!

PROVED DEFINITELY LESS IRRITATING THAN ANY OTHER LEADING BRAND!

WE'RE NOT FORGETTING HOW JOHNNY'S ADVICE ABOUT PHILIP MORRIS ADDED TO TOM'S TONICITY!

Use These Words With Tongue In Cheek!
(Plan to use ONE every week!)

EUPHORIC (u-fu-ric) — Feeling "in the groove".

FEBRIFUGE (fu-ri-fu) — A "Fever Reliever".

LACHRYMATORY (lak-ri-ma-to-ri) — Cup of tears, not cheers.

LAGNIAPPE (lan-yap) — A trifling gift.

NO CIGARETTE HANGOVER — No stale smoked-out taste; no light dry feeling in your throat due to smoking.

PRIMOGENITOR (pri-mo-ge-ni-to-ri) — Forebear; the "check-book" to you.

PROLEGOMENOUS (pro-log-o-m-e-n-us) — Prefatory.

PROLIXITY (pro-lik-si-ty) — Long-winded.

PUTATIVE (pu-ta-tiv) — Reputed, supposed — if see here.

RECIDIVISM (re-si-d-i-v-izm) — Falling back into bad habits.

TONICITY (to-ni-si-ty) — Vigor, health.

NO CIGARETTE HANGOVER

when you smoke

PHILIP MORRIS

That's the reason over 2 MILLION MORE Smokers SWITCHED to PHILIP MORRIS!