

# FIVE FINALISTS VIE FOR HOLLY WEEK QUEEN

Five Finalists Presented



Here are the sophomore mens' choices for Holly Queen finalists. Left to right are Pat Jones, Jackie Thorsen, Nancy Leek, Janet Campbell, and Eleanor Long. Soph men will vote for the Holly Queen today. The Queen will be crowned at Saturday's dance in the SUB.

## The Idaho Argonaut

VOL. 58, NO 24

THE IDAHO ARGONAUT, Official Publication of the ASUI

FRIDAY, DECEMBER 11, 1953

### Famous Violinist Presents Concert Here

#### Menuhin Presents Concert

The Moscow Community Concert association and the ASUI presented Yehudi Menuhin, violinist, at the Memorial gymnasium last evening to a huge crowd.

Yehudi Menuhin, child prodigy at the age of eight, has become the best-known American-born virtuoso in the world. He has played in every continent and in more than fifty countries. His career includes shows for the armed forces, reopened the Japanese concert series, and played in India at the invitation of Nehru.

Menuhin has premiered numerous modern compositions and rediscovered several famous classical works, among these newly-found concertos of Vivaldi, Schumann, Mozart and Mendelssohn. He has been honored by royalty and other heads of governments all over the world, and appeared with every great orchestra and conductor of our time.

Selections which highlighted the program were: "La Follia" by Corelli, five movements from the "Partita in E Major" by Bach, "Sonata in F Major" by Mendelssohn, and "Concerto No. 22 in A Minor" by Viotti.

An informal gathering was held in the Syringa room of the SUB after the performance for students who desired to meet and talk with Menuhin.

#### Has Anyone Lost A Battleship Lately?

Latest addition to the University Lost and Found collection is a 15-inch scale model of the battleship Missouri. A bathing cap was turned in at the same time. No, they didn't come from the Navy building, reports D. D. DuSault, registrar.

The office also reports a varied collection of jackets and scarves along with a stack of text books. They claim their supply of text books will be available clear up to final exam time.

The University has also come into possession miscellaneous keys, glasses, jewelry, pens and pencils. You can pick up your lost items by call at the Information Window, Ad. Office building.

#### High School Debaters Vie In Tourney

Thirteen teams have entered the first annual Idaho High School Debate tournament at the University of Idaho Friday and Saturday, Professor A. E. Whitehead, director of the tourney, announced today.

Nampa high school has entered five teams, with Lewiston and Kellogg each sending four. Each team will debate six times, both affirmative and negative, on the question, "The Electoral Vote of Each State Should Be Cast in Proportion to Its Popular Vote."

The tournament will be held at the SUB beginning Friday at 7:30 p.m. It will continue Saturday at 9 a.m.

Debates will be judged by University faculty members Thomas F. Hopkins, Dr. Harry C. Harmsworth, William C. Banks, Edward A. Cebull, Clifford I. Dobler, Howard E. Packenham and William Tenney, who will judge the debates on the basis of presentation, analysis of the case, evidence and refutation. Varsity debaters will help with timing.

Kellogg's four teams, coached by Jack Boswell, will be composed of Charlene Davis, Wick Cripe, Karen Andrews, Larry Ripley, Virginia Wood, Eric Carlson, Keith Torney, Karen Wilson, and Susan McKinley.

Entered from Nampa are Paul Forshey, Fred Grant, Glen Davidson, Ann Easton, Donna Frost, Lodi Brown and four students to be named later. Nampa coach is E. C. Matthews.

Lewiston's entry list is not available.

Other suggestions are: have teachers bring their star pupils to the University; organize special tours of the campus for visiting prospects; have a college student from the home town of each prospective enrollee write a personal letter answering any questions the prospect might have; and show films depicting various phases of campus activity.

The recruitment chairman said a tour is planned for this spring in which the pep band, specialty acts, singing, and discussion groups will be featured. Problems as to drinking, travel from home town to the University, extra-curricular activities, and social functions available here at Idaho would be considered in conferences with students and their parents.

**SUB Discussed**

The Board suggested that the SUB committee pin down, if possible, the \$26,000 dollar-a-year loss in SUB facilities. The question was raised whether or not the loss may stem from the cafeteria.

The Board considered disconnecting the cafeteria juke box during noon hour. Continual juke racket during lunch was thought to be the reason for a dwindling number of students.

(Continued on Page 2, Col. 2)

#### Professors Discuss Teacher Education

Members of the Idaho and WSC colleges of education discussed matters of mutual interest in teacher education at a luncheon on December 8.

Those participating from Idaho were Dean J. F. Weltzin, Dr. Ray M. Berry, Dr. Hervon Snider, Dr. John Snider, and Dr. Melvin Farley.

The major topic of conversation at the luncheon was how best to carry on a program of student teaching.

#### COMING EVENTS

**SUNDAY:**  
Cosmopolitan club Christmas party, 2:30 p.m., South ballroom, SUB.

**MONDAY:**  
Blue Key initiation, 5:30 p.m., Syringa room.  
ASCE meeting, 7 p.m., Borah room. Professor Warnick will talk on snow gauges. Short film in earthmoving equipment. Anyone interested is welcome.  
Hell Divers, 7:30 p.m., at pool. No business meeting.

#### Kleffner Reveals Plans On Student Recruitment

##### Tree Lights On For 33rd Year

Christmas on the campus is best noted between 4:30 p.m. and 4:30 a.m. when the lights on the huge spruce tree on the Ad lawn are on.

For 33 years the 100-foot tree has been decorated by Ralph Kennedy, electric shop foreman. This year Mr. Kennedy put 90 colored lights and 1080 feet of wire on the tree. The tree lights use 1350 watts of power and are turned on automatically by a time clock as are the campus street lights. The wire runs up the middle of the tree and the 90 lights are connected to this main line.

Last year the tree was not decorated because of the power shortage.

Mr. Kennedy doesn't know how old the tree is, but he says it was 40 feet high when he started his annual decoration 33 years ago.

Flip Kleffner, Student Recruitment chairman, presented to Wednesday night's Executive Board meeting extensive plans to induce Idaho's high school graduates to attend this University.

Barbara Higgins, SUB Committee chairman, gave the Board a brief run-down of the SUB committee's activities this fall.

Kleffner told the Board the Vandaleers have made an outstanding contribution to the recruitment program. The Vandaleers will whip up more good will for the University in a tour of southwestern Idaho this year, he said.

**PCC Okay**

The Pacific Coast conference has given permission for personal contact of high school students by University athletes. Each year, students throughout the state receive information from the registrar's office concerning registration, classes, expenses, housing, and many other aspects of campus life.

The suggestion was made that an All University Day be held with demonstrations by each department. Radio publicity was recommended. Questionnaires may be sent to south Idaho schools to determine how many of their students enroll in institutions other than the University of Idaho.

**Tours and Letters**

A number of additional plans and proposals for recruitment were presented by Kleffner. These include: sending cards to alumni; enlist aid of the Vandal Boosters; draw up a short recruitment program to present during the Vandaleer tour; send the Pep Band on a tour of the state; send the Arg to high school seniors at least once or twice during the year; and write congratulatory letters to seniors who receive honors.

Other suggestions are: have teachers bring their star pupils to the University; organize special tours of the campus for visiting prospects; have a college student from the home town of each prospective enrollee write a personal letter answering any questions the prospect might have; and show films depicting various phases of campus activity.

The recruitment chairman said a tour is planned for this spring in which the pep band, specialty acts, singing, and discussion groups will be featured. Problems as to drinking, travel from home town to the University, extra-curricular activities, and social functions available here at Idaho would be considered in conferences with students and their parents.

**SUB Discussed**

The Board suggested that the SUB committee pin down, if possible, the \$26,000 dollar-a-year loss in SUB facilities. The question was raised whether or not the loss may stem from the cafeteria.

The Board considered disconnecting the cafeteria juke box during noon hour. Continual juke racket during lunch was thought to be the reason for a dwindling number of students.

(Continued on Page 2, Col. 2)

#### Vandaleers Hold Concert Wednesday

Growing in popularity from year to year, the pre-Christmas Candle-light concert of the University of Idaho Vandaleers will be presented in the Memorial gymnasium at 8 p.m. Wednesday.

The concert, with its traditional procession of candle-bearing singers, was moved from the University auditorium to the gymnasium last year to accommodate the overflowing crowds. An audience of 4,000 witnessed the 1952 presentation, and another near-capacity crowd is expected this year.

Preceded by Christmas carols played from the tower by a brass choir composed of members of the University Concert band, the candle-lighting procession will open the program.

The Vandaleers, conducted by Glen R. Lockery, will sing a group of 15th, 16th and 17th century choral numbers, followed by a number of songs by modern composers. Interspersed with solos, the program will also feature successive groups singing in the carol style. It will close with a number of carols most familiar to American audiences.

Assisting artists for the Vandaleers will be Ruth Krieger, cellist, visiting instructor in music, and Hall M. Macklin, organist, head of the music department.

Featured soloists, chosen from the ranks of the Vandaleers, include Leah Jensen, contralto; Margaret Fox, Phyllis Ralskin Goecke, and Caroleigh Gittens, sopranos, and Giles Godfrey.

Why? The committee recommended that a two-week trip would be ideal. The Administration says a student shouldn't be away from school for more than (we think it's) 10 days.

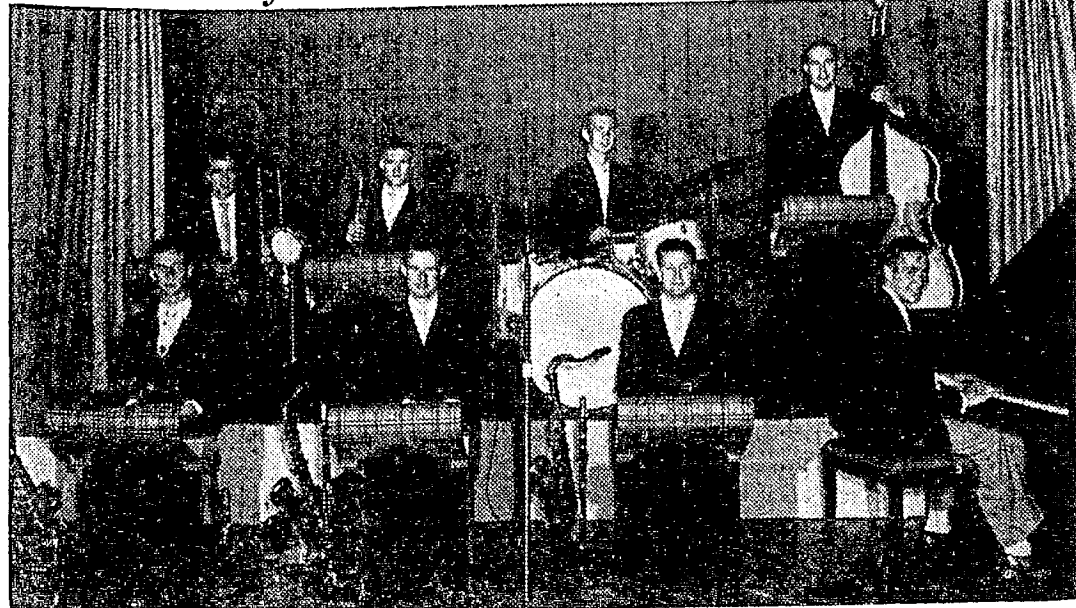
If students are going to be asked to help in the recruitment problem by traveling, speaking and singing, we think they should be excused for two weeks. If anything is going to benefit the school, it is student appearances.

And if Kleffner and company as well as the entire student population is asked to aid the program individually, why slap them down? Strange, isn't it? You're asked to help, then told that your ideas stink.

Why? We were shocked to learn that the SUB is losing \$26,000 a year. Where are we losing it? We don't rightly know. Nobody

(Continued on Page 2, Col. 2)

#### Ready To Make With The Melodies



Ralph Dickinson's orchestra poses pretty as they get ready to play for the Holly dance. The eight piece group is expected to play for a full floor of dancers Saturday evening. Admission price for the dance is \$1.75 per couple.

### Holly Dance To Climax Busy Sophomore Week

#### Community Solicits For Capt. Thomas Fund

##### Santa's Comin' To Club

Santa Claus will arrive at the faculty club tonight at 7 o'clock sharp. All students with children are asked to bring their children. Refreshments will be available for parents.

University Dames have been invited to Pullman Monday as guests of the Dames organization on the WSC campus.

A business meeting has been scheduled for Wednesday evening. Movies will be shown during the entertainment part of the program.

#### Home Ec To Hold Annual Party

Tuesday the Home Ec club held their annual Christmas party at the Home Ec lounge. A Christmas atmosphere was achieved by the brightly decorated tree in one corner of the room, table decorations for refreshments, and a Christmas story told by Carrie Chartrand. Carols were sung by the group as a climax of events.

In charge of food were Norma Hunt and Lorene Schmelzel; decorations, Betty Peterson. A gift was presented to Elsinie Nielson, Home Ec club advisor, in appreciation of her contribution to the organization.

Dr. Marian Zoringer, head of Home Ec Research at the University, and Shirley Bring, assistant professor of the department, talked to the girls Wednesday on the subject of research as a career in Home Ec.

Today is a special day for the children of the nursery school, for a surprise Christmas party will be given to them sponsored by the student teachers.

The children will hear stories told by Nathalie Bales and Jan Morgan, be given refreshments prepared by Mary Ann Tuttle, Barbara Pierce and Anne Kimbrough, and distributed by Mary MacDonald and Fran Mathason.

Aside from the purpose of entertainment for the party, this is a project of student teachers in learning to understand children.

#### Progress Wheels To Run Over Paradise

Paradise creek is going underground.

The creek that is familiar to many students of the University and that has been the scene of many tug-of-wars on the north side of the campus now bows to the wheels of progress.

According to George Gagon, University engineer, a long range plan to divert our beloved creek into pipes running underground is being formulated by the University Building and Grounds department in conjunction with the city of Moscow.

The city of Moscow is surveying the project and the University is working out the plans.

The sections of pipe line are to be completed one by one whenever funds are available. Eventually Paradise creek will appear no longer to the eyes of the students of the University of Idaho.

In its place will be the steel and concrete wheels of progress.

#### Tournament Scheduled

The University of Idaho is among the 600 colleges and universities in the United States invited to compete in the 1954 National Intercollegiate Bridge tournament.

The 1953 campus contract bridge champions at the University of Idaho were Bert Wohlschlegel, Tom Domsic, Frank Boyles and John Nixon.

All play will be by mail. Bridge sessions will be held on the campus on a date designated by the tournament director. Proposed dates are between February 17 and 21.

Hands will be judged by a bridge authority at the national headquarters, and prizes will be presented to winning entries.

Princeton and Purdue were winners in last year's competitions.

A committee has been organized to solicit contributions to aid in the defense of Capt. T. C. Thomas, professor of Naval science, in two \$75,000 libel actions.

The committee includes Mrs. A. Stephens Lowrie, hostess at Lindley hall; Dr. Robert E. Hosack, associate professor and chairman of political science; Dr. William M. Howard, associate professor of insurance; and Mrs. Earl Clyde, route 1, Moscow.

Named in the two actions with Captain Thomas are the Tribune Publishing Co., Lewiston, in one suit; and Editor Louis Boas and The News-Review Publishing company in another.

The suits stem from last year's Shoup-Estes case in which Captain Thomas made comments regarding action taken by former Moscow Justice of the Peace John Borg. Borg, now a hotel clerk in Pullman, contends the statements held him up to public hatred, ridicule and contempt.

The former Justice of the Peace is also suing Latah County Prosecutor Melvin Alsager, Boas and The News-Review Publishing company in a \$50,000 suit.

Motions for dismissal were filed last week in Boise by attorneys for the defendants. The attorneys claim the court lacks jurisdiction in the dispute. The Tribune Publishing company has asked for more definite statements in the complaint against them.

The defense attorneys also asked that if the suits are not dismissed, they be tried by jury.

The actions were originally filed in the northern division of U. S. District court of Idaho. They were dismissed a few weeks ago by Judge Chase A. Clark on grounds that they were filed in the wrong jurisdiction.

Murray Estes, attorney for Borg, claimed that his secretary caused the error in filing when she typed the original complaint.

The case was refiled in the central district and will be heard in Moscow next spring if no action is taken on the recently filed motions for dismissal.

The dance will be held from 9 to 12 p.m. in the SUB ballrooms. Sophomore men will vote for the queen Friday noon.

The five finalists modeled late winter formal in David's window, while their dates, Gary Post, John Nelson, Don Sullivan, Gary Leaverton and Aubrey Stevens, modeled suits from David's men's department.

Narrator for the showing was Donna Thompson, chairman of publicity for Holly week.

In spite of rain and wind the sophomores pulled through with their rally and serenade Wednesday evening. Instead of the regularly scheduled rally held before the serenade, a group of about 30 sophomores serenaded each living group, calling "We want the sophomores!"

The rally with dancing and Christmas carol rehearsing was followed by the 150-voice sophomore serenade of the entire campus.

Ralph Dickinson's orchestra will play for the semi-formal dance. Tickets will be sold at the door for \$1.75 per couple.

Donna Thompson and John Bahr have offered to find dates for anyone wishing to attend the Holly dance and who hasn't a date as yet.

**Travel Bureau Tries New Approach**

The Travel bureau is trying something new this Christmas to obtain rides home for the students.

Instead of the filing system previously used, notices for rides and riders will be tacked to the bulletin board in the lobby of the SUB. The students post their own ads and do their own checking.

It is hoped that more rides will be secured this way.

For further information contact Wayne Glidden at 2176.

**Dance Wiz Me, Baby, Slow, Slow**

By JANE QUERNA

The "creep" is coming! The latest import from London, the creep is moving through the United States, catching hold on the teenagers and spreading upward and outward to the young and the old.

A new dance step, the creep, although frowned upon by the sophisticated set in London, is nevertheless the rage among teenagers in London. The dance step moves so slowly that a couple can only make about one circle around the floor per orchestra number.

The lead partner always moves backward and is supposed to exhibit a bored and sad expression on his face. (This might prove advantageous to the male who really feels bored and sad at the thought of dancing.)

Being considered "real cool" when you just barely move on the dance floor may be a welcome relief to those who feel they are too outdated for the jump and jive that has been so popular so long. Just a slow creep around the dance floor, and backwards, at that, may soon tab you as a dreamy dancer!

Modern civilization has been due for a slowing down, and maybe

**Official Notice**

It is requested that all users of tape recorders who have one of Audio-Visual Machines in his or her possession please see that they are returned to the Center before December 19.

They will all need servicing and checking. They would very much like to have tape recorder, Elcor marked A-V1 brought in as soon as possible.

**NOTICE**

All undergraduate students enrolled at the University of Idaho under the G.I. Bill for the first time, please report to the registrar's office to check for Military and P.E. credits.



# Chrisman Has "Strangers"; Hays Hall Honors Seniors

Dinners seem to have replaced dances in the realm of social activity these days. Guests at the Chrisman hall costume dinner were "strangers" from all walks of life, while the seniors were the guests of honor at a Hays hall dinner. Dining formally were the members and pledges of Kappa Alpha Theta.

The Sigma Nus, with overwhelming generosity, presented the Gamma Phis with an especially nice Christmas gift after their annual Christmas party Wednesday night.

## CHRISMAN HALL

Wednesday Chrisman had a costume dinner which saw many interesting portrayals present. The costumes covered all phases of life from just plain burms to well dressed business men and Turkish merchants. Christine Jorgenson was even there. In all it was quite a rowdy brawl.

That evening the froth went on exchange with DG. Everyone appeared to have a good time. The DGs have yet to call for the trophy which is gathering dust on the lounge mantle.

The third floor song birds are planning to serenade the various women's houses with Christmas carols early next week. You had better get the water buckets ready, girls.

## KAPPA ALPHA THETA

Candlelight and candy canes decorated the Theta dining room at the annual formal Christmas dinner Wednesday. Martha Mick sang "White Christmas" after a dinner sponsored by the sophomore class.

Sharon Roden and Janice Foedish were honored at a surprise shower Thursday evening. Both girls will be married at Christmas time.

Weekend guests were Joyce Latham, Marilyn Stewart, Jackie O'Toole, and Barbara Jensen.

Marilyn Meils was tapped for Hell Divers two weeks ago.

## HAYS HALL

Wednesday evening the juniors of Hays entertained the seniors with a dinner. The senior will be read by Trudy Mills, and Shirley Lent foretold their prophecy. Holy branches decorated each table except for the senior table, which was decked with red and white flowers.

The Sigma Chis announced Saturday night by a serenade that Freda Payne is a finalist for the Sweetheart of Sigma Chi.

Another queen finalist is Pat Jones for Holly queen.

The TKEs serenaded Shirley Allen who received a pin from Bill Wilkinson.

## TRI DELTA

Sunday afternoon a tea was held in honor of Mrs. Jim Bowlby.

Thursday night. Her wheels are still wobbling from it.

Recent dinner guests were Sgt. and Mrs. McCarters, Tod Kuga, Ron Titus, and Dick Fray. Weekend guests were Bob Riggers, Don Pratt and Ed Kenworthy.

Our annual Christmas dinner is scheduled for Wednesday, December 16.

## GAMMA PHI BETA

Wednesday evening our annual Christmas was held with our brother fraternity, the Sigma Nus. Entertainment was provided by the Gamma Phi Dixieland band, Dave Anderson and Bill Summers, who put on a humorous skit, and Bill Mahlik who played several piano selections.

The Sigma Nus presented us with a Christmas present, a beautiful radio-phonograph console, which they had "borrowed" earlier in the afternoon.

An informal fireside was held last Sunday night when the Gamma Phis brought in their dates and toasted marshmallows. A repeat performance of this will continue all this weekend.

Monday evening band rehearsal was held and Bets Judd and Bev Bowers did the Charleston to the fine Dixieland music.

## ATO

The annual Tin Can dance will be held tonight in the chapter house from 9 to 12. Chaperones for the dance will be Mr. and Mrs. James A. Defenbach and Mr. and Mrs. Elton Rayack. Serving as chairman is Pat George.

Gordon Smith was a dinner guest Wednesday evening.

Joe Tom has been in the Infirmary since Tuesday.

Pledge test finals were completed Wednesday night.

The ATO volleyball team took second place honors in intra-mural volleyball.

Song leader Paul Ackerman is busy getting a Christmas serenade ready for next week.

## ALPHA CHI OMEGA

Mrs. Lindsay Titus of Pullman, Washington, president of Alpha Chi Omega, Province 13, was a guest of the local chapter Monday and Tuesday. A dinner was held in her honor and special meetings

and workshops were led by her for members and pledges.

Barbara Simons, Alpha Chi candidate, is a finalist for Sweetheart of Sigma Chi. Janet Campbell is a Holly queen finalist.

The traditional "Pixie Week" began Tuesday when names were drawn, and Pixies have been running about doing good deeds and hiding candy bars. Gifts of children's toys will be exchanged at a party concluding Pixie week next Wednesday evening. These toys will be given to the Lewiston Children's home. Pledges plan entertainment honoring Pixies and big sisters.

Terrie Thorp was honored in the monthly ceremony held Wednesday as Carnation girl for November, for her work on the Homecoming float, and the Faculty Tea which was held Sunday and was very successful. Sophomores of the house were royally entertained with hot cocoa at a party Wednesday evening after the sophomore rally and serenade.

## SIGMA NU

The annual Christmas party with the Gamma Phis was held Wednesday night. Dinner was served at both houses at 6 p.m. After dinner both groups adjourned to the Gamma Phi house where entertainment and dancing took place. The highlight of the party came about when Fred Magee and Bill Daiker presented the Gamma Phis' radio to them as a Christmas present.

They had earlier picked up the radio disguised as workmen from a town radio shop. The Gamma Phis gave their version of Gene Krupa and Co. and Bill Summers and Dave Anderson put on a short skit satirizing Ben Hogan and his caddy.

All this was followed by the entire group singing Christmas carols with "Fingers" Mahlik at the piano.

An unusual slant on tubing was done by the pledge class as they tubbed Terry Hanson at 6:30 a.m. Tuesday. Surprisingly enough, a large number of Alpha Phis came to watch their sister Delores Lindfors cut her way through a maze of chicken wire.

The first good snow proved even-entful as a short skirmish with the DGs was held Tuesday night. The DGs won.

The house singing group has been spending a good deal of time preparing for their Christmas serenade which will be held Sunday evening. Along with the Yuletide spirit, a visit is expected from Santa next Thursday. Presents

will be exchanged. It should be a barrel of fun.

Chuck Alford and John Gillis were tapped for Sigma Delta Chi, national journalism fraternity for men, Wednesday evening.

## DELTA GAMMA

The hashers, feeling very ambitious, no doubt, cooked the meal for the house last Thursday. The crowning highlight of the evening was a three-layer cake one inch high.

was held last Sunday at the house. The annual brother-sister banquet. Guests were LeRoy Clemons, Eddy Parsons, Ron Siple, Don Runner, Dryden Hiller, Mike Spence, Pete Swanstrom, Fritz Holz, Lloyd Horn, Fritz Drumheller, Bill Douglas, Dave Clements, Pete Woulful and Dave Johnson. Sharon Wright was chairman and the pledges provided the entertainment.

Wednesday night the pledges had their exchange with Willis Sweet. Jackie Thorson was chosen as one of the five finalists for Holly queen who will be presented at the annual Holly dance Saturday night.

## ENGAGEMENTS

### GALE-LOUTHIAN

The Kappa Kappa Gamma guest dinner Wednesday night was made an extra special event by the announcement of the engagement of Carolyn Gale to Bill Louthian.

Sprigs of holly, red candles and red Christmas tree centerpiece adorned the table and gave those entering the dining room the first clue that "something was in the air." At each place was a red ribbon attached to a miniature red felt stocking, holding a tiny peppermint cane. Drawing the cane from the stocking revealed the names of the betrothed. The beautiful solitaire centered an arrangement of red carnations and gold leaves.

Guests for the occasion were Mr. and Mrs. Gale of Spokane, Nancy Gale, sister of the bride-to-be, and Sally Krehbiel.

Carolyne, a junior majoring in English, is a resident of Spokane. Bill is from Idaho Falls and affiliated with the Alpha Tau Omega fraternity.

No definite wedding date has been set.

It is estimated that 27,000 cubic miles of water fall as precipitation each year on the world's land areas.

## Church News

### L.S.A.

Coffee hour this afternoon at 4 in the Christian center. This evening a roller-skating party is planned with the Lutherans from WSC. Meet at 8 p.m. at the Christian center.

The meeting this Sunday will be in the form of a Christmas party. The program will start at 7 p.m. in the First Lutheran church. Those desiring rides to the meeting Sunday, contact Bob Uhrig at 25071.

### WESTMINSTER FORUM

The Forum will carry on its annual caroling party tonight. The truck will leave from the church at 7 p.m. All members and friends are welcome to carol. Dress warmly and buy a 25-cent toy for the party afterwards.

A special Christmas program, under the direction of President Betty Thompson, is planned for this Sunday. A regular supper will be served at 5 p.m. and the program will follow. Cars will again leave from the Campus Christian center for all those who desire rides.

### NEWMAN CLUB

The Idaho-WSC Christmas party will be held at WSC at the Sacred Heart church. The party time is 7 p.m. Sunday night and the Idaho group will leave from the SUB at 6:30. All those wishing transportation meet at the SUB at 6:15.

Everyone is asked to bring a small present, a toy or something similar, valued around 50 cents. These gifts will be given to the St. Joseph's Children's home in Cullis.

### DISCIPLE STUDENT FELLOWSHIP

Friday evening at 7 p.m. all those who would like to go caroling meet at the Campus Christian center. At 9:30, after the game, the carolers and others will meet again at the Center for refreshments and fun.

The Sunday evening meeting, 5 to 7:15, will follow a Christmas

## WRA NEWS

Ten girls will represent the University of Idaho at the annual "Volleyball Playday" in Pullman tomorrow.

The team plans to leave the Women's gym by 8:15 a.m. and will return at 5:30 p.m. Several college teams from Idaho and Washington are entered in the games. The matches are strictly for recreation and no winners will be declared. Girls going to the playday are Marcia Jansch, Sharon Rupe, Gail Wolverson, Betty Huber, Peggy Brink, Darlene Frost, Yvonne Cleveland, Marlene Emley, Judy Powell and Bobby Murphy.

Several badminton matches have been scheduled for tomorrow. Those scheduled are:

9 a.m., Judd and Hamilton, Gamma Phi, vs. Reynolds and Radler, Steel; 9:30 Raudalt and Grady, Tri-Delt, vs. Monroe and O'Donnell, D.G.; Metcalf and Den-sow, Gamma Phi, vs. Dregnie and Hobdy, Theta; 10 a.m., Cook and Verberg, Forney, vs. Korvola and Robinson, Steel; W. Gray and Crisp, Steel, vs. Hack and Hryslert, Tri-Delt, 10:30, Roff and Archibald, Forney, vs. White and Wolfe, Gamma Phi; 11 a.m. Vance and Frost, Forney, vs. Loren and Wilkes, Tri-Delt.

The orchesis and pre-orchesis

theme throughout the discussion hour, recreation, and refreshments. Everyone is welcome to come.

and modern dance classes are presenting their annual Christmas program tonight in the Women's gym. The program is scheduled to begin at 7:45 p.m.

## NOTICE

Students interested in forming a chess club please call Kermit Bird at 8315 days, and 6675 evenings.

Natural gas produced in the United States furnishes about half as much available heat energy as the Petroleum production.

## NUART NOW PLAYING!



**FROM HERE TO ETERNITY**  
The Boldest book of our time—Fearlessly, Honestly, on the Screen!

starting  
**BURT LANCASTER - MONTGOMERY CLIFT**  
**DEBORAH KERR - FRANK SINATRA**  
**DONNA REED**

Screen Play by DANIEL TAYLOR—Based upon the novel by JAMES JOYCE  
Produced by ROBERT ALLEN—Directed by FRED ZIMMERMAN

ADULTS ..... \$1.00  
CHILDREN ..... 30c

**For the Best In Shoe Repairing**  
LACES, DYES, POLISH  
ALL SHOE CARE NEEDS  
ALL WORK GUARANTEED  
**NORMAN'S SHOE REPAIR**  
114 East 3rd St.

When you come to  
**Varsity CAFE**  
you KNOW the food's good.  
Stop in often for coffee and full meals.

**Hale Motors — Dodge-Plymouth**  
404 South Washington  
PHONE 2439

**EXCLUSIVE!!!**

**Well-Known Reindeer Tells All**  
NORTH POLE, ARCTIC. Looking very dapper for an 18-point buck with chalked muzzle and matching white tail assembly, Dasher, famous front-running reindeer for the S. Claus Parcel Service, stated today:

1. Conditions on the northern tundra are pretty much the same as ever. No-o, TV hadn't affected the grazing habits of the middle-class herds.
2. That despite reports to the contrary, you don't ever thoroughly adjust to sub-zero weather, regardless of the warm esteem people hold you in.
3. Rumors of a reindeer strike for Christmas Eve are unfounded. Somebody's got a termite in his antler.

When asked about the most popular Christmas gift down through the years he replied without hesitation: "Menswear by Manhattan. I've helped haul Mr. Claus's sled, roe and buck, nigh unto forever... so I ought to know... nothing makes a man happier than shirts, sportshirts, ties, pajamas, beachwear or underwear labeled *Manhattan*. Don't know whether it's the live style that makes a man look and feel so good, whether it's the traditional tailoring detail, or the array of fabrics, patterns and colors that are all so unmistakably quality. I'll admit one thing. I've kind of wished sometimes that *Manhattan* would make deerwear."

**LATEST COLLEGE SURVEY SHOWS LUCKIES LEAD AGAIN**

She hoped that he'd propose by mail, And when she got his letter, All he wrote upon the note Was: "Luckies taste much better!"  
Hyman Levy  
C. C. N. Y.

Last year a survey of leading colleges throughout the country showed that smokers in those colleges preferred Luckies to any other cigarette.

This year another far more extensive and comprehensive survey—supervised by college professors and based on more than 31,000 actual student interviews—shows that Luckies lead again over all other brands, regular or king size...and by a wide margin! The No. 1 reason: Luckies taste better.

Smoking enjoyment is all a matter of taste, and the fact of the matter is Luckies taste better—first, because L.S./M.F.T.—Lucky Strike means fine tobacco. And second, Luckies are made better to taste better. So, Be Happy—Go Lucky!

She's got a red convertible And flashy diamond rings, Smokes fresher, smoother Luckies, too—She likes the best of things!  
Fred D. Mitchell, Jr.  
University of Texas

To make a hit at Christmas time, And really spread good cheer, Give all your friends that smoother smoke—Give Lucky Strike this year.  
Frank G. Wylie  
Kansas State College

**Where's your jingle?**  
It's easier than you think to make \$25 by writing a Lucky Strike jingle like those you see in this ad. Yes, we need jingles in this ad. Yes, we need jingles—and we pay \$25 for every one we use! So send as many as you like to: Happy-Go-Lucky, P. O. Box 67, New York 46, N. Y.

**LUCKY STRIKE**  
CIGARETTES

PRODUCT OF The American Tobacco Company AMERICA'S LEADING MANUFACTURER OF CIGARETTES ©A.T.Co.

**ROLLERSKATING AND T.V. TOO**  
**SKATELAND**  
12th & Idaho Lewiston, Idaho  
SPECIAL FOR OUT-OF-TOWN STUDENTS: WE ARE OPEN UNTIL MIDNITE ON FRIDAYS & SATURDAYS

**Arrows Way Out Front As Christmas Gift Favorites**

Students heading home for a fast round of gift shopping (and hinting) seem to be generally agreed: Arrows take all the work out of the hectic days before the 25th. They're one gift that scores high with every guy. Big holiday selections at all Arrow dealers now.

**ARROW**  
TRADE MARK

SHIRTS • TIES • UNDERWEAR • HANDKERCHIEFS • SPORTS SHIRTS

### Why Does Ice Float? "Dad" Is Now In Trouble

This isn't a warning, but it could happen to you yet, post-grads, and other students with children. Bill Knight, farm electrification project director for the University, says a good many fathers have run into trouble with it, and it's embarrassing!

You're out on the lawn some cold morning, your 7-year-old son dogging your footsteps. You approach a puddle, and he notices a thin layer of ice over the top of the water.

He takes his mitten off and pushes the ice down a little to see if it will break. It does, but the ice floats on top of the water.

Why?

"Pop," he asks, "what makes the ice float on the water?"

"Well," you say, "it's lighter than the water."

"How did it get lighter?"

This is where you ought to leave in a hurry, but the chances are that you'll stay, so you say, "Ice expands when it freezes. When it expands, it doesn't weigh so much per cubic inch. It's lighter."

"Why did that water freeze into ice and leave all the rest of it unfrozen?" he asks.

"Well," you say, realizing that you've fallen into a real one this time. "When water begins to cool at the surface, it gets heavier and heavier, so pretty soon it sinks to the bottom and pushes the warm water up."

Why?

"Hah!" he says. "You just told me that ice is lighter than water. If cold water sinks to the bottom, why doesn't ice sink?"

You know you can't do it, but you keep going. "It's like this. As the warm water at the bottom of the tank is displaced by the sinking cold water, it comes to the top. It gets colder and sinks down to replace some warm water. After while it's all cold, and the ice freezes over the top of the pool."

Don't sigh; you aren't through yet. He thinks that one over a bit, and then—"But the ice is colder than the water underneath, isn't it? If it wasn't any colder than the water underneath why did it freeze and leave all the rest of the water?"

You are right back where you started. Think hard now, boy. Remember that old physics book you used to carry to school with you. You're saved! So, you say, "I almost forgot one of the important facts about that freezing business. You see that cold top-water cools off and sinks and repeats the process until the entire puddle is 39 degrees. Then the water is heaviest per cubic inch."

Why?

"Then it stops all that sinking and rising and the water on top has to stay there and freeze. When it gets colder, it expands. When it is frozen into ice, it has expanded so much that it's lighter than the water below it and floats."

"If the cold can penetrate the first layer of ice, then it can keep on freezing more and more water. But the thicker the ice layer gets, the harder it is for the cold to reach through and freeze more water. That's why ponds seldom freeze solid."

There is a silence for a time, but brace yourself!

"Say, Pop. If the water in this tank just gets so cold and then leaves the warm water on top, couldn't we heat the top water and keep the ice off? The warmer water couldn't sink through the cold water, could it? Then you wouldn't have to heat a whole water tank. Betcha that'd save electricity!"

### Future Farmers Sponsor Delegate

Don Rydych, Lewiston, an International Farm Youth Exchange delegate who recently returned from several months in Austria, will begin a speaking tour of southeastern Idaho, December 14, at D. E. Warren, state 4-H club leader, announced today. Idaho chapters of Future Farmers of America helped to sponsor his trip abroad.

The tentative schedule is: Shelley and Firth, December 14; Idaho Falls, Armon and Rigby, December 15; Ashton, St. Anthony and Sugar City, December 16; Rexburg and Roberts, December 17; Preston, December 18; Malad, December 19; Pocatello, December 20; Blackfoot and Aberdeen, December 21; Pocatello and American Falls, December 22.

Carl Gotsch, Parma, an IFYE delegate to Egypt, has returned to the University of Idaho. He will give talks on his trip in Boise and Payette valleys during the Christmas holidays.

### Out Of The Past

**25 Years Ago**  
Dec. 11, 1928—Illness from the "flu" is rapidly decreasing on the campus, reports from the infirmary indicated yesterday. A week ago today women patients were moved from Forney hall, the top floor of which had been converted into an impromptu infirmary.

During the week of November 26 to December 2, there was an average of 80 patients going through the clinic every day, and 65 patients in bed.

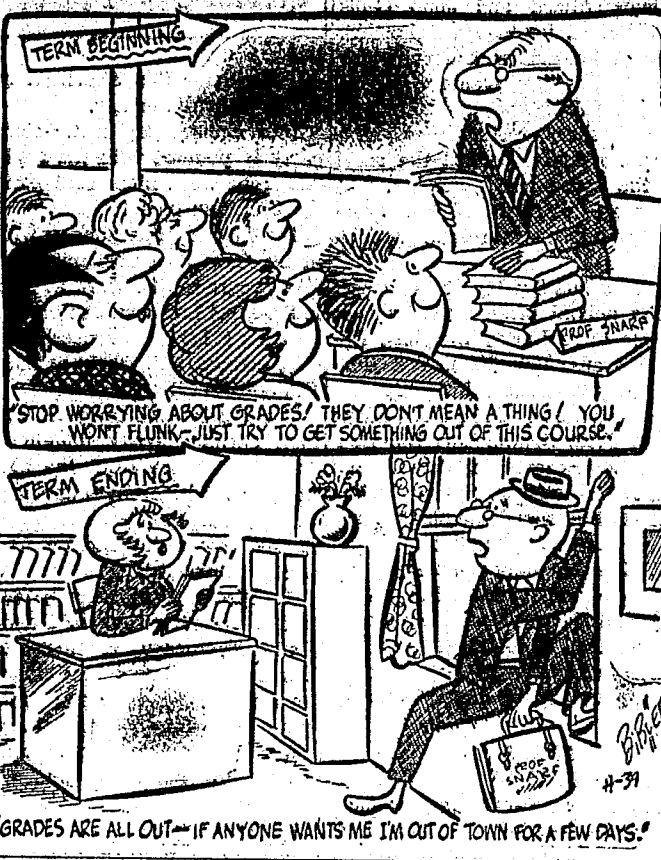
**10 Years Ago**  
Dec. 9, 1943—The senior ball was a huge success last Saturday night, but here and there a corsage was visible proving that not all students, service or civilian, are familiar with the old Idaho custom of not sending corsages for a semi-formal dance.

**5 Years Ago**  
Dec. 10, 1948—Fourteen hundred new out-of-town students from all parts of the nation wanted to attend the University of Idaho this year, but only 250 were admitted under the University selective policy, it was revealed in a report issued today by Registrar D. D. DuSault.

**1 Year Ago**  
Dec. 12, 1952—Jean Sorenson was elected Holly Queen by the male sophomore living group. Her attendants will be Elinor Coleman, Vonda Jackson, Karen Hinckley, and Pat Miller.

### LITTLE MAN ON CAMPUS

by Dick Biber



Velocities 300 miles per hour are reached in the "jet stream" some 20,000 to 30,000 feet in the air over the northern hemisphere. Jet stream blows from west to east. It starts in the wilderness of Siberia at the 300 m.p.h. speed. It blows across Japan, the Pacific, North America—where it has slowed down to the 150 m.p.h. reading—and northern Europe. When it gets back to Siberia, its velocity is recharged. But no one knows how.

The Japanese were the first to discover the jet stream. During World War II they used it to float across the ocean balloons loaded with incendiary bombs.

It seems that certain types of clouds are associated with the jet stream—mostly those very high, wispy looking propositions. Forest Service lookouts have been plotting these clouds during the past couple of summers. Time-lapse movies the kind that compress a full day into a few minutes—have also been taken from some lookouts.

One thing about the jet stream seems pretty certain. It shifts from about Mexico to the Arctic. That is, part of the time it blows 'way to the south of the U.S.—part of the time it blows to the north of the U.S.

Dr. Paul McReady, Missoula weather experimenter, said the jet stream is present a third of the time during the summer over the northern Rockies. He spoke at a weather modification meeting Monday.

The jet stream appears to have quite an effect on the weather in these parts. That's why the Forest Service got interested in the subject. Maybe they'll be able to do something about forest-fire weather.

Great Britain exports about 14 million dollars worth of thoroughbred horses a year.

**"EDUCATION" DEFINED**  
(From the Cavalier Daily of Virginia)—"... we finally decided that education is a process of deadening one end in order to liven up the other."

### Idaho Cattlemen Meet Here To Discuss Beef Production

The Idaho Cattlemen's Association made its annual four of the University of Idaho campus yesterday. About 50 attended, including 10 from the Moscow chapter of the FFA.

In the morning the members heard a talk by C. G. Sierk, head of the University animal husbandry department, at the livestock judging pavilion. Sierk explained the weight-for-age of beef-bred bulls test program the University is carrying on.

Clark Torel gave an explanation of the steer feeding test program the University is carrying on at the branch experiment station in Sandpoint.

**Visit Farm**  
Members looked over cattle at the University farm for the rest of the morning. They had a group luncheon at the SUB.

Seth Burstead, Challis, president of the state association, spoke in the afternoon on the function of state and national Cattlemen's Associations. G. B. Wilson of Culdesac, representative of the Nez ed plans for the state convention in

### Arizona Art Exhibit Brought To Idaho

Sunday afternoon was enjoyed by many students attending the open house for the Arizona Art exhibit. Mary B. Kirkwood, associate professor of art, showed her usual fine talent by painting an oil portrait of Jerry Scheideman.

The group with the concept of "What Is Art?" and "How to Appreciate Art." Following this, he gave a short rundown on a dozen or more of the 40 paintings on display. Refreshments were served during the gathering by the Art club president, Barbara Higgins. The exhibit will continue until December 18. Students may drop into the Art building any time to enjoy this exhibit.

### Complete Line of Ski Equipment and Clothing

Christmas Gifts for the Entire Family

### Intramural Equipment

A SPORTSMAN'S DREAM

### The Outdoor Shop

TRY OUR

### Goofburger

OR CAMPUS SPECIAL

Also GIANT SHAKES AND SUNDAES

### THE NEST

For All the World to See ... AND ADMIRE!

Engagement Ring ... \$185.00  
Wedding Ring ... \$110.00  
Prices Include Federal Tax

**Columbia**  
Diamond Rings... Forever

BUDGET PAYMENTS IF DESIRED

### J & N JEWELERS

### Christmas Light Sets and Replacement Bulbs

Electrical Appliances for Your Christmas Gift

### SPENCE ELECTRIC

Phone 25851  
306 South Washington

Remember Our Famous Sandwiches Steaks Fountain Service

### Johnnie's Cafe

### COFFEE SHORT ORDERS MEALS

will be enjoyed in the friendly atmosphere of

### THE PERCH

Jingle bells, jingle bells I've given up my sleigh Oh what fun it is to ride and Save the Greyhound way!

No matter which direction you travel from the campus on your Christmas trip, the Greyhound way is the best way to arrive fresh and relaxed, looking and feeling your best. When you go Greyhound you ride in relaxing warmth and comfort. Frequent schedules permit you to leave when you're ready... allow longer visits. Low round-trip fares save you extra dollars for extra holiday spending. Take Santa's tip—ride and save the Greyhound way!

### BIG SAVINGS on HOLIDAY TRIPS

from Moscow	one way	round trip
SPOKANE	\$1.95	\$3.55
SAN FRANCISCO	18.55	33.40
SEATTLE	8.60	15.50
CHICAGO	36.25	59.35
PORTLAND	7.90	14.25

15% Fed. tax

GREYHOUND BUS DEPOT  
Moscow Hotel Moscow

### GREYHOUND

### GRILL CAFE

For Yours Meals Out Try Our American Food or DELICIOUS Chinese dishes

Give the Perfect Christmas Gift.

Call 2-7011 for APPOINTMENTS TO HAVE YOUR PICTURE TAKEN FOR CHRISTMAS AT

### RUDY'S STUDIO

### How the stars got started...

Tyrone Power says: "I had it tough bucking 'tradition' to get into movies. First, a famous great-grandfather actor, same name. Grandfather and Dad, too—both big in the theatre. I was barker at a Fair before anyone gave me a chance. Then, bit player, understudy, hard work and eventually I made it!"

**Tyrone Power**  
FAMOUS MOVIE STAR

"I TRIED CAMELS FOR 30 DAYS. THEY HAVE THE MILDNESS I WANT AND THE RICH FLAVOR THAT SUITS ME TO A T! THEY'LL SUIT YOU, TOO!"

**CAMEL**  
TURKISH & DOMESTIC BLEND CIGARETTES  
CHOICE QUALITY

For Mildness and Flavor

### CAMELS AGREE WITH MORE PEOPLE THAN ANY OTHER CIGARETTE!

# Hawaii Says Aloha To Idaho Students

A six and a half week vacation with college credits at the University of Hawaii at Honolulu is being offered to any University of Idaho students who would like to attend between June 16th and August 3rd.

The student rates for this six and a half week tour is \$575. Incidental expenditures for food, tuition, and bus fares should run from \$180 to \$200.

This includes round trip via the Pan American Airways, 40 days at the Royal Grove hotel, an all-day picnic trip around the island of Oahu, an Aloha lunch at the Royal Hawaiian hotel, and a dinner date dance at the Queen's Surf.

The University of Hawaii announces a full curriculum for the summer session. There will be 120 credit courses in 27 fields of study for undergraduate and graduate students.

Classes will be held in the morning, leaving afternoons free for recreation. Tuition is \$8 per credit hour. There is no registration fee. A grade transcript is also necessary.

Students Leave

Departure time from the Portland airport is at 10 p.m. Friday, June 18th. Students will be housed at the Royal Grove apartment hotel.

Two persons are to share a small apartment in which light meals may be prepared. Maid service, linen, radio and phone are included. The hotel is two blocks from Waikiki Beach.

Entertainment will include an all day picnic trip around the island of Oahu, visiting the famous Foster Orchid conservatory, pineapple and sugar plantations, Mormon Temple grounds, viewing Pearl Harbor, the Aloha Tower, docks, and yacht harbor as well as scenic and historic spots in Honolulu.

Happy Birthday

There will be a birthday lunch at the Willows which will honor those having birthdays during our stay.

The Aloha lunch and style show will be in the Royal Hawaiian dining room.

Panhellenic lunch will be at the Oahu Country club, and many Honolulu hostesses will entertain in their homes and hotels.

Owing to the limited housing at Waikiki, a \$100 deposit is required by April 1st, and the remainder before June 1. There will be no refunds after May 1.

There are reservations for 30. Each person will be allowed 44 pounds of luggage with a small hand bag and camera free.

Students who are interested contact Mrs. Betty Mendenhall, Hostess, Delta Gamma house, Corvallis, Oregon. Phone 3-6124.

Little Willie, tough as hell, Threw his sister down a well. And his mother, drawing water, Said, "It's hard to raise a daughter."

# Mosman Announces Two New AFROTC Assignments

Colonel O. J. Mosman, professor of Air Science and Tactics, announced the recent assignment of master sergeants E. A. Garland and H. S. Patterson to the local AFROTC detachment.

Sgt. Patterson, who has been in the service since 1927 when he first served with the National Guard Infantry in Ohio, has been in the Air Force since 1940. "In my Air Force service," Sgt. Patterson said, "I've been around nearly two-thirds of the world."

To explain the statement he pointed out he served during World War II in England as a first lieutenant after receiving a direct commission in 1941. Re-enlisting in 1948 as a master sergeant, Patterson was sent to the German air force for four months in 1949, returning to the states and then going to Taegu, Korea where he served with headquarters 5th Air Force.

Sgt. Patterson, who came to Moscow from Waco, Texas, is a native of Utah. He is married and has two children, a boy, 14, and a girl, 10. He is assigned to the operations and training section of the local detachment.

Sgt. Garland, a veteran of 13 years Air Force service, arrived from Lowry field, Denver, the same base where his career began in 1940. Assigned to the records section with the local detachment, Garland's service experience has been mainly in this same line of work.

During World War II he served in England, going to Bad Kissingen, Germany during 1944-45 as chief clerk and director of photo reconnaissance in the 9th Air Force headquarters. After serving as chief dispatcher at Hamilton field, California in 1946, Sgt. Garland spent his second overseas tour at Johnson, Japan. Returning to the States, he was at Scott field, then Lowry field and now Moscow to round out his 13 years in the service. A native of Denver, Sgt. Garland is married and has two children.

## News Briefs

"Preview Time" will be presented Monday, December 14 at 3 p.m. at the Audio Visual center. Films will be shown on Children Learning, Children Growing Up, and Forest and Conservation.

Dean Hart, College of Business, will speak tonight to the Pottlatch Foramen's council in Lewiston on current business trends.

Dean Stinson, College of Law, will attend the meeting of the Association of American Law schools in Chicago December 28, 29, and 30.

A Practice court case will be tried Saturday morning at 9 in the Federal District Courthouse in the Post Office building.

Counsel in the case are law school seniors. Attorneys for plaintiff are Charles Frifren, Bert Poole, Witman Symes; attorneys for the defendant are John Bengston, Harry Turner, and Frank Schrontz.

The case will be determined by a jury composed of Moscow high schools students in the government class.

All living groups must turn in house snapshots to the Gem office right away or they will be left out of the Gem.

# Brush Land Conference Discusses Range Control

Initial steps in a long-range program to provide basic information needed for the classification and management of the large areas of forest and range brush lands of northern Idaho, eastern Washington and western Montana were taken at the region's first brush land conference Friday at the University of Idaho.

Out of this meeting came a permanent organization to be known as the Inland Empire Shrub Land Management committee.

Dr. Paul D. Dalke, leader of the cooperative wildlife research unit at the University of Idaho, was elected chairman of this coordinating group. Secretary will be Les Pengelly of Coeur d'Alene, big game biologist with the Idaho state fish and game department.

The conference was called by Dean Ernest Wohletz of the Idaho College of Forestry, and was attended by about 30 foresters, wildlife and range management men from the U. S. forest service, the Northern Rocky Mountain Forest and Range Experiment station, Bureau of Land Management, State Fish and Game department, State Forestry department, industry and timber protective associations, the University of Idaho and Washington State college.

"The situation in brush management today is very similar to that on the range 30 years ago," said Dr. E. W. Tisdale, head of range management in the Idaho College of Forestry.

"We knew we had a resource of great value but knew little about its carrying capacity and how to manage it."

There are many problems. Elk herds in the Clearwater area are threatened by a decline in browse. Some plants have grown so tall that the animals cannot reach the leaves, but the forestry service has attempted to relieve the situation.

# Church Groups To Hold Concert

The annual Christmas program of the Methodist church will be held Sunday evening at 7 in the church. The program will feature a presentation of "The Holy City" by the choir under the direction of Norman Logan.

Kappa Phi and Wesley Foundation, Methodist student organizations, will assist in the program by presenting the traditional Kappa Phi candlelighting service and a series of tableaux in conjunction with the music.

Carol singing will follow the Christmas program. The carollers will leave from the church at 9 p.m. This will be the last meeting of

# Alum News

Althea Henry, B.S. (Home Ec.) 1932, is now dietitian at the Idaho State Tuberculosis hospital in Gooding, Idaho. She served her dietetic internship at Christ hospital, Cincinnati, Ohio.

Rose E. Schmidt, B.S. (Home Ec.) 1931, is presently living in New Plymouth.

Joyce Fisher, B.S. (Mns. Ed) 1933, is teaching school in the Gooding school system.

Earl L. Ballard, B.S. (Ag.) 1930 is farming at Rupert, Idaho. His wife is the former Wanda Joyce Acock, ex '49. They have two children.

## Now—low family fares let you SAVE on HOLIDAY TRIPS

You'll travel in complete comfort aboard one of NP's fine trains. You'll enjoy a fast, safe trip in any kind of weather. Best of all, you can take the whole family—at a new low cost. For full information about special family fares, call or write . . .

C. W. Sisly, Agent  
West 8th Street Phone 2229  
**NORTHERN PACIFIC RAILWAY**  
Route of the *Fastest North Coast Limited*



VA reminds that when an on-the-job trainee under the Korean GI Bill receives more than \$310 per month from all sources — wages and government allowance, the law requires VA to scale down its allowance to bring the total within that amount. This ceiling applies to all on-the-job trainees, regardless of the rate of GI allowance they are receiving. If a veteran, however, should earn more than \$310 in salary, he would receive no allowance.

Here's how it works: For a trainee with no dependents, the beginning GI Bill allowance is \$75 per month. With one dependent, it's \$85. With more than one dependent, it's \$105 per month. Under the law this allowance is reduced at intervals of every four months, as the veteran's training progress and his earning ability increases.

VA's answer is that veterans may earn as much as they can, provided it does not interfere with their class work—and it doesn't have to be reported to VA.

One qualifying reminder from VA, however, is that this applies only to those taking GI Bill training at school or college. There is a "ceiling" that applies to Korean veterans who are taking on-the-job training regarding reporting earnings. But even this ceiling — \$310 per month—puts no limit on how much a veteran may earn.

Patronize Argonaut Advertisers

**YOU NAME IT by REDDY**

Near this lake of the Ear-Bob Indians, Gold was found one day. One hundred years later—a treasure that's greater: Cabinet Gorge Dam, above.

The country around Lake Pend Oreille was among the richest in America when a hardy prospector discovered gold in 1852. 100 years later the same self-reliant enterprise led crews of the Washington Water Power Company to erect a giant dam of Cabinet Gorge on the Clark Fork. They fought the untamed wilderness to bring more low-cost power to the Northwest.

## How important is a penny?

At some time or another when you've bought gasoline you have probably wondered how much less a gallon would cost if our profit were taken out of the price.

Actually if the Union Oil Company made no profit on any of its products, the price of "76" or "7600" gasoline would be reduced by a little more than one penny per gallon.

With this "penny-plus" we have to meet today's inflated cost of finding and developing new oil reserves. With it we also have to pay the additional amounts necessary to replace worn-out equipment such as pipe lines, refineries and trucks.

Furthermore, out of this fraction more than a penny, we have to pay the 40,362 owners of the Union Oil Company. For without profit there would be no incentive for these men and women to put up their money to buy the tools so vital in increasing the productivity of our 8,756 employees.

So, as you can see, a penny is mighty important to us. As a symbol of the small profit we make per gallon of product sold it is far overshadowed by the 8 1/2% tax per gallon the Federal and State governments collect from both of us.

\*Computed on basis of gasoline sold in California.

This series, sponsored by the people of Union Oil Company, is dedicated to a discussion of how and why American business functions. We hope you'll feel free to send in any suggestions or criticisms you have to offer. Write: The President, Union Oil Company, Union Oil Bldg., Los Angeles 17, California.

**UNION OIL COMPANY OF CALIFORNIA**  
INCORPORATED IN CALIFORNIA, OCTOBER 17, 1899  
Manufacturers of Royal Triton, the amazing purple motor oil

**ART'S CAMPUS BARBER SHOP**  
FOR CAMPUS MEN  
IT PAYS TO LOOK WELL

GO FARTHER WITH SIGNAL GAS from **Land's Signal Service**

**Kenworthy** NOW SHOWING **THE CRUEL SEA** Jack HAWKINS - Virginia McKENNA

SUN.—MON.—TUES.—WED. **THE JOE LOUIS STORY** COLEY WALLACE as JOE LOUIS

**NUART** NOW SHOWING **"FROM HERE TO ETERNITY"**

SUN.—MON.—TUES. **THE 5000 FINGERS OF DR. T** Peter Lind Hayes MARY HEALY

**SKIRTS** Orlon and Gabardine — Wool **2.99 to 12.99**

**BLOUSES** Orloons — Cottons — Rayons **1.00 to 5.99**

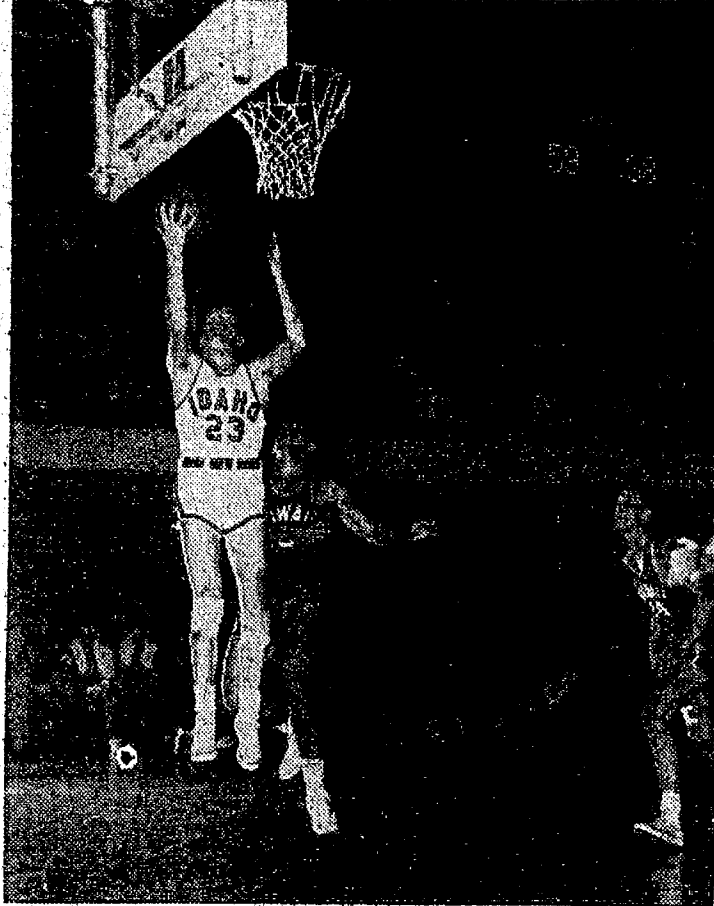
**SWEATERS** Orlon — Nylon — Wool **1.99 to 5.99**

**JACKETS** **4.00 to 12.99**

**Rosana Shop**  
215 East Third Street  
MOSCOW SHOPPING CENTER

# RAINBOWS FALL; VANDALS LOOK FOR 3 & 4

### Flynn Takes Two For Idaho



Tom Flynn goes up for a fourth period lay in despite the efforts of Bob Leisher, University of Hawaii guard. Harlow Tucker can be seen on the right. Flynn gathered in 10 points for the Vandals in the 65-39 Idaho victory.

## Idaho Runs Past Hawaii 65-39

University of Idaho basketball fans saw the Vandals draw a quick 6-0 lead in the opening two minutes of the game between the Vandals and University of Hawaii Rainbows Tuesday night which the Vandals won 65-39. But the Hawaiian crew caught up fast making the score 8-7 halfway through the first quarter and then settled back and trailed 12-9 at the end of the period.

The Vandals' defense kept the Rainbows from finding the mark with their field goals but with the help of Bill Lee, center, they were able to rack up nearly half of their points from the free throw stripe.

Lee pushed through 12 out of 16 gift tosses and managed to make only two field goals to lead the Islanders in scoring with 16 points.

Dwight Morrison Idaho center was top scorer for Finley's crew pushing through 13 counters.

Idaho came up with a 41.2 percent of field shots while the Rainbows could only muster a 14.8 percent for their efforts.

Hawaii's quick moving squad kept the Vandals guessing during the first half with their constant ball stealing.

The Rainbows were able to dump only three field goals through the net during the second half after trailing 31-24 at the mid-way spot in the contest.

Don Munson, reserve Idaho forward, was second high for Idaho in points, totaling 10 during the second and third quarter.

Hawaii had previously been beaten by Oregon State twice—73-54 and 55-50.

IDAHO (65)	FG	FT	PF	TP
Flynn, f	4-11	2-4	1	16
Melton, f	3-12	0-0	3	10
Morrison, c	5-9	3-4	4	13
Falash, f	1-1	0-2	0	2
Garrison, g	2-6	4-4	3	8
Bauscher, f	1-1	0-0	0	2
Dodel, f	2-0	0-0	1	4
Monson, f	5-7	0-2	1	10
Nelson, f	0-0	0-0	0	0
Totten, f	0-0	0-0	0	0
Lillibridge, c	1-0	1-1	5	2
Fulton, c	0-0	0-0	0	0
Swanstrom, c	0-0	0-0	0	0
Sather, g	0-0	2-3	0	0
Keith, g	0-0	0-0	0	0
Totals	26-13	13-22	23	65

HAWAII (39)	FG	FT	PF	TP
H. Lee, f	1-4	4-6	0	6
Manligui, f	1-4	1-2	1	3
B. Lee, c	2-16	12-17	1	12
Leisher, g	1-1	0-0	0	2
Furukawa, g	2-9	1-1	4	4
Tucker, f	0-5	1-2	1	1
Bruce, f	2-2	0-0	0	4
Keolanui, f	0-2	1-2	3	2
Tagama, g	1-8	1-1	1	1
Young, f	0-0	0-0	0	0
Cadinhia, g	0-0	2-4	1	2
Totals	8-54	23-35	14	39

Score by quarters: 1-2 3-4 7  
IDAHO 12 19 14 20-65  
Hawaii 9 15 5 10-39

Field goal percentages: Idaho .412; Hawaii .148.  
Free throw percentages: Idaho .591; Hawaii .657.  
Officials: Glover and Williams.

### Stanford Tops Nation in Passes

NEW YORK — Stanford, which narrowly missed getting into the Rose Bowl, got some measure of consolation by finishing the football season as the major college passing leader.

The West Coast school, which won six games, tied one and lost three, gained 179.5 yards a game through the air, final NCAA statistics showed Wednesday.

Thanks mainly to Bob Garrett, the Indians completed 130 passes for 19 touchdowns and a 56.5 average. Only Utah with 57.8 percent, Mississippi State 57.1 and Cincinnati 57.0 finished with a higher percentage.

Kansas State set an all-time mark for major colleges by averaging 23.5 yards for each of its 26 completions, six of which went for touchdowns. The old record was 23.3 yards by Clemson in 1950.

### Former Mentor Dies From Accident Injuries

Calexico, Cal. — Jeff Cravath—who guided the University of Southern California to four Pacific Coast football championships — died in Calexico yesterday of injuries suffered in a highway accident.

The hospital announced the death came at 11:30 a.m. His wife was at his bedside.

Cravath, who retired in 1950 after a poor season to become an Imperial Valley rancher, suffered a concussion, skull fracture and multiple other injuries Wednesday when his truck collided with another near El Centro. Emergency surgery was performed early yesterday morning to open the right windpipe to his lung, but complications set in. Doctors report his heart gave out.

Two of Cravath's USC teams won Rose Bowl victories. He resigned under pressure and was replaced by Jess Hill. He coached the Trojans to a record of 52 victories and 23 losses with six titles during his tenure.

Cravath, who was 48, graduated from Southern Cal in 1927, where he starred at center under the late Howard Jones.

### PCC Will Oppose Eligibility Rule

SAN FRANCISCO — The Pacific Coast Conference will fight a move to set up nationwide eligibility rules for college athletes under the National Collegiate Athletic Association.

PCC faculty representatives Tuesday termed the plan a move toward a "supernational conference dictatorship."

Prof. H. P. Everest of Washington, spokesman for the PCC winter meeting, said almost all the NCAA eligibility proposals are already in effect in the PCC. He said the PCC opposition is a matter of principle.

"Each conference has its own problems," he said. "We consider these jurisdictional disputes. To be frank, we're jealous of our own prerogatives."

Everest said a national ruling often would not apply to similar cases in different areas.

He said PCC delegates to the NCA convention in Cincinnati in January will be instructed to oppose the plan.

Ino therb usiness, the PCC: 1. Signed a new three-year contract with the National Broadcasting Co. for radio and TV rights to Rose Bowl football games beginning Jan. 1, 1955. Although the figure was not given, it was expected to be near the \$1,510,000 in the last contract. The games will be under the same sponsor, Gillette Razor Co.

2. Set up a code to sever relations with any school that quits the conference, gets kicked out or put on probation. Under the new rule, effective now, conference members must cancel all athletic schedules with any member who resigns or is ousted. They also have the option of cancelling any schedules with a school put on probation.

### INTRAMURALS

Lindley hall edged Alpha Tau Omega last Wednesday 15-13 and 18-16 to take the intramural volleyball championship and move into second place in the intramural standings. Sigma Chi, runner-up in the Greek league, is still in first place in the race for the Intramural plaque with 725 points.

Intramural point totals (points received for volleyball in parentheses):

SC (190) — 725
LH (190) — 715½
SN (180) — 704
PDT (170) — 702½
WSH (190) — 699½
ATO (200) — 680½
CC (90) — 610
CH (140) — 595½
TKE (150) — 520
BTP (65) — 520
DTD (160) — 475
DC (105) — 474½
E&A (150) — 438
IC (110) — 433½
PGD (110) — 415
KS (90) — 395½
DSP (135) — 380
SAE (65) — 135
PKT (130) — 280
LCA (80) — 224½
LDS (40) — 40

### Everything But Pillows And Refreshments



Here's a bird's eye view of what Vandal basketball fans see when Idaho takes a time out. Something new in the basketball world, lying down during the time outs gives the team more rest and is easier to hear the coaches comments above the noise of the crowd.

## Cougars Are Prey To Hawaii's Rainbows Wed.

PULLMAN — Washington State Cougars, victorious in their first three games, fell prey to the hustling Hawaii Rainbows here Wednesday night 47-45. The game started slowly, gathered momentum as the second half opened and ended on a crescendo note which had fans on the edge of their seats.

Rainbow center, 6-5 Bill Lee went to work in the third period and scored as many points as the entire Cougar team. His even dozen counters were supplemented by nine more from his teammates, and the Rainbows led at halftime 34-18.

The Cougars rallied in the final period and matched the visitors point for point until they cut the margin to the two point final tally. And even then the final score was in doubt, with only one second showing on the gym scoreboard.

Trailing 47-43, the Cougars broke up a Hawaiian stall as the seconds ticked away. Reserve forward, Bill Underwood, found the range with a one hander and was fouled. He stepped up to the line with the single second left and may have intentionally missed the gift pitch hoping for a Cougar rebound. The Pullman five pumped up a pair of shots, but both missed.

Highlights of the contest besides Lee's torrid third quarter was the spectacular ball control work of Al Manligui, whose dribbling and ball handling would rival their stall of midway through the fourth period and, for the most part, the Hilo, Hawaii boy was doing most of the keep-away work.

It was the third game in as many nights for the Islanders, who defeated Eastern Washington Monday night and lost to Idaho Tuesday.

### Time Trials Set For Skiers

Capt. Henry Burnett, University ski coach, said yesterday that selections for the Vandal varsity ski team will be announced Tuesday after the time trials this weekend at Emida.

Those selected will travel to Boise during Christmas vacation to ski at Bogus Basin, a ski area located 18 miles from Boise. The skiers will be guests of the Boise Recreation department and will participate in at least once race. It is the hope of the department that the presence of the Idaho slatriders will stimulate skiing interest in the youth of the area.

The squad selected to travel to Boise will also make the trip to Rossland, B. C., to compete in the first collegiate meet of the year.

Congratulations to skier Torleiv Flatebo and his wife Gerd. They are the parents of a baby boy tipping the scales at 7 pounds 1 ounce. Torleiv won't be seeing his baby for a couple of years though. His wife is in Norway. He is a crack cross country man on Idaho's ski team.

### Just Chatter

By JOHN McDERMOTT

Couldn't see much improvement in the refs at Tuesday's game over those of last Friday's tilt with Gonzaga. As a matter of fact we couldn't see a bit of improvement.

If the PCC officials this year are going to be like the last four we have seen it will be a wild and woolly season for someone.

One thing about these fellows is that they certainly aren't picking on one particular team. They stink just as loud for the opponents as they do for the Vandals.

It isn't often you hear a crowd boo when a call favors their team, but at the Tuesday night tilt against Hawaii there were several instances where the crowd hollered even though Idaho benefited from the call.

A lot of credit goes to William Lee, Rainbow center. He dropped 12 of 17 free throws and he knew how to get to the charity line. He was pretty smooth in getting a foul called on a Vandal. It is a technique that few basketball players possess, and he was certainly a master at it.

Time trials will be held at the Emida Ski Bowl on Saturday and Sunday. Varsity selections will be made at that time.

Team will be announced Tuesday after the time trials this weekend at Emida.

Those selected will travel to Boise during Christmas vacation to ski at Bogus Basin, a ski area located 18 miles from Boise. The skiers will be guests of the Boise Recreation department and will participate in at least once race. It is the hope of the department that the presence of the Idaho slatriders will stimulate skiing interest in the youth of the area.

The squad selected to travel to Boise will also make the trip to Rossland, B. C., to compete in the first collegiate meet of the year.

Congratulations to skier Torleiv Flatebo and his wife Gerd. They are the parents of a baby boy tipping the scales at 7 pounds 1 ounce. Torleiv won't be seeing his baby for a couple of years though. His wife is in Norway. He is a crack cross country man on Idaho's ski team.

Congratulations to skier Torleiv Flatebo and his wife Gerd. They are the parents of a baby boy tipping the scales at 7 pounds 1 ounce. Torleiv won't be seeing his baby for a couple of years though. His wife is in Norway. He is a crack cross country man on Idaho's ski team.

Congratulations to skier Torleiv Flatebo and his wife Gerd. They are the parents of a baby boy tipping the scales at 7 pounds 1 ounce. Torleiv won't be seeing his baby for a couple of years though. His wife is in Norway. He is a crack cross country man on Idaho's ski team.

Congratulations to skier Torleiv Flatebo and his wife Gerd. They are the parents of a baby boy tipping the scales at 7 pounds 1 ounce. Torleiv won't be seeing his baby for a couple of years though. His wife is in Norway. He is a crack cross country man on Idaho's ski team.

**COAST TO COAST STORE**  
Everything for the  
Farm — Home — Car  
AT A SAVING

HAVE A  
**DAD'S**  
THE Old Fashioned  
**ROOT BEER**  
...IT'S DELICIOUS

**Two Suits for the Price of 1**

We have just received a new selection of Fine All-Wool Flannel Suits in one or two button models.

These suits alone will regularly sell in most stores for at least \$69.50. Jack gives you the suit and a contrasting pair of All-Wool Slacks for just

**\$69.50**

2 SUITS (1 Dress, 1 Sport) FOR THE PRICE OF 1 A REG. \$89.50 VALUE

Jack Propstra's  
**ESQUIRE SHOP**  
"Home of Menswear that Men Wear"  
604 COLORADO • PULLMAN, WASH.

## Grizzlies, Vandals Clash Here This Weekend

By JOHN HUGHES

The Idaho Vandals will be after the third and fourth wins of the young basketball season tonight and tomorrow night when they clash with the Montana University Grizzlies at Memorial Gymnasium. Gametime both nights is 7:30.

Idaho downed the University of Hawaii Rainbows Tuesday night 65-39 for the second win of the year. Coach "Cheerful Chuck Finley's" boys opened with a 76-67 trouncing of Gonzaga.

Montana coach George "Jiggs" Dahlberg brings to Vandalville a reconstructed squad who will employ a ball-controlled set offense this season. The Grizzlies have been noted in the past for a face-horse, fast breaking style of play.

Montana has but one game under their belts and that was a loss to the WSC Cougars.

Seven Vets Back  
Seven lettermen have returned to bolster the club which lost to Idaho last year 70-50 in a pre-conference games for both clubs. Heading the veteran list are co-captains Eddie Anderson and Ritch Johnson, last year's first string guards. Pat Curran, a 6-4 junior center has also returned. Anderson has been moved to a forward slot to replace the graduated Chuck Davis, one of the Montana top scorers. Davis also was near the top in scoring in the Skyline Conference.

Other vets who will probably be seeing action tonight and tomorrow will be George Samuelson, 6-5 junior center; Ed Fine, 6-3 junior, Frank Nickel, 6-2 sophomore, all forwards and guard Jack Coppedge, a senior.

Nickel lettered as a frosh with conference, gets kicked out or put on probation. Under the new rule, effective now, conference members must cancel all athletic schedules with any member who resigns or is ousted. They also have the option of cancelling any schedules with a school put on probation.

Idaho and Montana meet in a home and home two game series. The Vandals travel to Missoula during the vacation on Dec. 28 and 29 to wrap-up pre-conference play. This weekend's games will be the last time the student body will have a chance to see the Vandals at home before the conference games begin in mid-January. Loyola of Los Angeles will invade Idaho courts Dec. 19 for the last home game.

Little Willie hung his sister; She was dead before we missed her. Willie's always up to tricks, Ain't he cute? He's only six.

## Silver-Gold Swimmers Named For Tuesday Meet

Plans for the Silver and Gold intersquad swimming meet to be held Tuesday have been completed with the exception of choosing 300 yard medley relay and 400 yard freestyle swimmers, according to Eric Kirkland, swimming coach.

The meet which is composed of swimmers from the frosh and varsity crew is to test the ability of squad members and see what they can do in competition, explained Kirkland.

Rich Bradbury, co-captain of the varsity will captain the Silver crew and Don Medley the other varsity co-captain will be in charge of the Silver swimmers. Teams and events are:

SILVER	GOLD
200 yd. backstroke—	Carlman
Bradbury	Carlisle
Anderson	
220 yd. freestyle—	Johnson
Richards	Holz
Jensen	Buckman
50 yd. freestyle—	Jones
Bradbury	Buckman
Lewis	
Individual medley—	Medley
Buckley	Carlman
Helle	
Diving—	Russ
Bell	
100 yd. freestyle—	Buckman
Richards	Jones
McKay	

Patronize Argonaut Advertisers

**Dr. J. Hugh Burgess**  
OPTOMETRIST  
Complete Visual Analysis  
Duplication of frames and lenses in our laboratory.  
Professional Building  
Phone 2344

**STEWART'S Shoe Repair**  
We do the kind of shoe repairing that you will like.  
Brushes.  
Dyes, Laces, Polishes,  
509½ S. Main  
Moscow, Idaho

This Christmas say it with... **Flowers**  
Prime requisites to your well-decked yule: gala greens and festive flowers. We've bright ideas for gifts and decorations.  
**MOSCOW FLORISTS**  
112 WEST 6th

For your Sweetest girl...  
**SHOP AT MAJOR'S**

**MORE MEN BUY GIFTS FROM MAJOR'S EVERY YEAR! . . . WHY?**

Why not take a Gift home to Mother?

1. Because Major's tsaff is thoroughly trained in this service.
2. Major's quality merchandise pleases more ladies.
3. Major's service in free gift wrapping—no embarrassment in purchasing intimate feminine apparel.
4. Major's new gift department makes shopping easier and more enjoyable.

**Major's APPAREL & GIFTS**  
6th & Main  
Moscow

**USED TIRES**  
Winter Treads  
Accessories  
BUDGET TERMS  
Gladly  
**Firestone Stores**  
110 S. Main  
Moscow