

In the October 21 issue of the Argonaut, a staff editorial writer, Jim Kruger, posed some questions to our readers in connection with the University of Idaho Marching band. The editorial, for the most part contained facts of the day of which anyone who attended the game could have observed.

At the conclusion of the piece, the writer directed a couple of questions to the band in an attempt to bring their problems into public light.

In doing so, the Argonaut seems to have been the match that set off the charge of T.M.T. (terrible musicians temper). In reviewing the controversy, Jason happened to glance at a copy of the WSC Daily Evergreen that was published after the game. Their pages contained a column by the Evergreen Editor Tom Heuterman in which he commented the following:

"Two things I believe were evident to all those who attended Saturday's foot-saving scrimmage at Moscow.

"One was the showing put on by the WSC marching band. Perhaps within the ranks a director or player could detect faults which, like in any organization, can be detected only by one who knows. However to all who compared the high-stepping formations and brisk field entrance and exit by our band, credit was indeed given. Also not unnoticed was the continual selection of marches from the WSC stands glaringly in contrast to the absence of such in the silver gold-decked bleachers across the field. Maybe it wasn't the music which won the game, but it did less than nothing to dampen any enthusiasm generated by the crowd."

The musicians may argue as long and loud as they may, but the fact remains that we were not the only ones who noticed the deficiency.

The point we were trying to make was lost in the random babblings of John Baker, Idaho musician, in his letter to Dear Jason of last Tuesday. He fell victim to the feeling that he should, like the authors of today's Dear Jason contribution, viciously attack the Arg and its writers for daring to ask such questions in an attempt to get to the bottom of the problem. Maturity will undoubtedly change their view points.

Conversely, Warren Bellis, band director, took the questions in the light that they were given—constructive criticism. Rumors filtered into the Arg office that he blew his top, but after looking over the situation Jason doesn't think so.

Being an ex-band member, Jason is aware of some of Mr. Bellis' problems. The idea behind the first editorial was to pose the problem to the students, open it up and take a look, find out what could be done and then go ahead and get something done to improve the situation. Can this truly be called "ignorant criticism," "ridiculous comments" or "a kick in the teeth?"

In keeping with our idea, Warren Bellis was contacted by a staff member and a fact finding conference has been arranged with him, an Executive Board member, Jim Kruger and Jason.

It is Jason's sincere hope that out of this meeting will come some concrete ideas on how to alleviate most or all of the bands problems. They have suffered too long. Interest in their difficulties is up and the time is ripe. We as students must act NOW.

If Jason may twist an old cliché around: "For bigger and better bands of tomorrow, we must build today."

Phi U. Presents Panel Discussion

Phi Upsilon Omicron, national home economics honorary, presented a panel discussion on the topic "What Scholarship Means to Me" to Miss Margaret Ritchie's introduction to home economics class recently.

Members of the panel were Joyce Genoway, Phi U president; Nancy Moore, vice president; Marilyn Marvel, Janis Archibald and Lou Ann Olson.

COMING EVENTS

SUNDAY All-Campus Dance Band, 2:30 p.m., Center Ballroom, SUB. MONDAY Gymnastic Exhibition team candidates, 4:10 p.m., Room 106 Memorial Gym.

Choices Named By United, SG

By John B. Hughes

The United and Student Government parties narrowed their final choices for the class elections this week after announcing nominations earlier in the week. The party candidates were selected in a primary vote held in campus living groups earlier this week. Students go to the polls November 10 to elect officers out of the three parties.

Vandal Vets Name Riley First Prexy

Art Riley was elected Wednesday to lead the new Vandal Veterans' Organization, a group dedicated to promoting and maintaining the interests and general welfare of the veterans enrolled at the University.

Some 30 vets met to form the group and elect Riley, Buz Hofmeister, vice-president and Wayne Crow, secretary-treasurer. The VVO also ratified a constitution and by-laws.

Gary Cowles was appointed chairman of the membership group and C. H. Bond was appointed temporary advisor pending approval by the assembly.

The organization explained that the purpose will be to promote and coordinate veterans' activities and interests while enrolled at the University.

An executive council, consisting of the above officers, four additional members to be elected, and the Organization's advisor sitting ex-officio, shall be the representative. Riley announced the next meeting two weeks from Wednesday.

Speech Ass'n. Is Idaho Guest At Conference

Delegates to the two-day Idaho State Speech Association convention began to arrive yesterday. About fifty Idaho speech teachers are expected on the University of Idaho campus for the conference which begins today.

The schedule for this afternoon's events is as follows: at 1 p.m. discussion of speech festival problems will be held in the Borah Theatre; at 3:30 delegates will be given a tour of the campus; and at 4:30 a series of short films on stage fright, presentation of platform material, and slides on dramatic material will be shown in the Borah Theatre. These sessions are open to the public.

The conference will be devoted to various phases of speech such as drama, debate, declamation, radio and television. Presiding at the opening meeting at 10 a.m. today will be Elizabeth Williams of Meridian, association president.

A demonstration debate by four Kellogg high school students under the direction of Lucille Parsons will feature the morning program. Dr. A. E. Whitehead, chairman of speech at the University, will then lead a discussion on high school debate.

Delegates for the convention will be "first nighters" at the University of Idaho production of "My Sister Eileen."

Special discussions and a business meeting will dominate Saturday's program. The discussions will be led by Miss Collette, high school plays; Edmund Chavez, assistant professor of dramatics; high school drama technical problems; and Robert Tracy, assistant professor of radio, who will speak on radio in high schools.

The business meeting will include the election of new officers and committee reports on resolutions.

REPRESENTATIVE CHOSEN

Campus Merchandising Bureau, Inc. announced today that Karen Becker was appointed girls' Chesterfield representative at the University of Idaho. A sophomore, she lives at Hays Hall.

'My Sister Eileen' Will Open Tonight

Out Numbered



This scene from the ASUI drama production "My Sister Eileen" shows six Portuguese sailors trying to make time with Eileen, played by Shirley Turner. Those playing the part of the sailors are John Wood, Richard Day, Fred O'Brien, Willis Smith, Dale Carlisle and David Cole. The risqué show will open tonight at 8 in the University Auditorium.

Curtain Time At 8 p.m. In Univ. Auditorium

The curtain goes up at 8 tonight on the first ASUI play of the season, "My Sister Eileen." The play will be held tonight and Saturday from 8 to 10 in the University Auditorium.

Admission for students is free, but they must have tickets, since all seats are reserved. Tickets are available at the University Bookstore. Non-students may obtain tickets for 50 cents at the Bookstore, or Hodgins Drug Store.

The three act comedy has been judged "the most successful light-hearted play of the season" by the New York Times. The setting is a cheap basement apartment in Greenwich Village, New York. Two sisters from the country—Ohio—are the principle characters. Ruth and Eileen, played by Nancy Benfer and Shirley Turner, come to the big city in search of employment. Mr. Appopolous, a shrewd landlord with a comic touch, rents the sisters a "beautiful" apartment, including a broken lock on the back door, which enables every drifter to pass through.

The play, directed by Jeane Collette, with Carol Pietsch as student director, includes elaborate sound effects, such as the construction of a new subway directly underneath the girl's apartment.

The cast includes a wide variety of characters. In addition to many local Village characters, the girls get involved with six Brazilian sailors in New York for the first time, and a Brazilian consul.

Besides being a story of two sisters on their own in a big city, the play is a study of Greenwich Village. It was adapted from the writings of Ruth McKenney, who, with her sister, actually lived in a basement apartment in the Village.

The play has since been revised into the successful musical comedy "Wonderful Town." Hollywood has made a motion picture out of the play, using the first title.

Members of the cast include Joe Jessep as Mr. Appopolous, John Wood as the Portuguese Consul, and Richard Day, Charles Tovey, Fred O'Brien, Willis Smith, Dale Carlisle, and David Cole as "future admirals."

Other players are: Tony Park, Richard Kaeser, Carl Gotsch, James Kruger, James Snarr, Jan Williams, David Anderson, Judy Hackler, Lucille Palmer, Tim Kime, Jolene Williams, Katherine Dreissen, Don Rafferty, Mary Allen Bennett, and James Bennett.

Carol Pietsch and Sharon are assistants to the director. Other members of the production staff include: Jean Boyd, stage manager; Jean Teutsch, assistant to the stage manager; Charles Tovey, Tony Park, Lucille Palmer, Judy Hackler, and Jackie Lavens, building and stage crew; Jan White, Jo Carol Bicket, Linda Lou Williams, and Lois Wilson, paint crew.

Tom McClure, Rose Marie Perrin, and Juana Butler, lights; Steve Clements and Katherine Dreissen, sound; Mary Ellen Bennett, Mary Duran, and Margaret Sullivan, props; Margaret Karau and Sue McMahon, publicity; Deborah Gentry and Dale Evans, costumes.

COLLEGIANS ACTIVE

The WSC campus dance band, the Collegians, fronted by Ed Alverti last year is again active, according to Marv Richter, new leader. The band is playing every Saturday night at the Vets' club in Moscow, but is available for Friday night booking on the campus. Phone 1175 Pullman.

Rodeo Excuses And Drill Team Are Board Topics

Discussion about a new girls' drill team and rodeo participation excuses were on the agenda of the ASUI Executive Board at their regular meeting Tuesday.

A new girls' drill team is in the process of becoming organized. AWS is in favor of a team if the uniforms are furnished, and if membership is gained on a try-out basis. It has been suggested that those interested in trying out for the drill team should realize the responsibility of practices and performances, if they are accepted. The Executive Board appointed Jan Hale to be in charge of getting the new drill team organized. McDevitt told the board that this

Seven Men Learn Fast Portuguese

There's more to being in a play than being able to act. Seven University of Idaho students had to learn how to speak Portuguese for the current ASUI production of "My Sister Eileen."

The seven would-be actors play the part of Portuguese sailors in New York, six of which speak no English. Jean Collette, director of the production, decided to have the parts spoken in Portuguese in order to increase the realism of the play.

The players took their lessons from Kenneth E. Bell, associate professor of radio and television. Bell was formerly a professor of languages at Rio Grande College and has knowledge of the Portuguese tongue. He has also had experience as a college drama coach.

According to Bell, only one of the boys has had any previous training in languages related to Portuguese. In the short time of six weeks, the boys have mastered their parts, which include every sound in the Portuguese language. Only one of the players, who plays the part of the Portuguese consul, speaks any English. The other six play "future admirals" who speak no English at all.

Interpretation is made possible by the use of gestures. The six sailors play a "unit part." Their actions are related so that they all seem to be playing one part. In this way, audience understanding is achieved through pantomime.

The boys learned the pronunciation of the difficult tongue rapidly and well. The quality of their accent is excellent. It is Professor Bell's opinion that any Brazilian could understand the dialogue perfectly.

Although parts played in Portuguese is not large, it is essential to the story of the play. The actors who had to learn the foreign tongue included John Wood, Richard Day, Charles Tovey, Fred O'Brien, Willis Smith, Dale Carlisle and David Cole.

Martin Serves As Research Assistant

Dr. Boyd A. Martin recently served as a research assistant to the United States Commission on Intergovernmental Relations. This group carried on an extensive study this summer in the area of federal grants in aid, studying them from a state-federal relationship.

Dr. Martin prepared the article and study on Federal Grants in Aid in Idaho. The study approached the various relationships of grants upon state government, local government, and various agencies and groups within the state.

300-Plus Turned Away From SUB As Vandals Are Drained For Pint

Bleeding freely, University of Idaho students yesterday completed a three-day "Part with a Pint" blood drive with a total of 848 pints donated, but over 300 more went home untapped.

The total fell short of the 1000 pint goal set for the drive, but officials said the deficit was caused by a shortage of blood containers which occurred on both Wednesday and Thursday.

"Otherwise, the total would have run close to 1200 pints," Dale Carlisle, drive co-chairman reported.

However, John Chapman, publicity co-chairman commented, "The drive was considered a success."

The Boise Regional Blood Center, which supplied the equipment, sent only 600 empty pints for the drive. The supply was exhausted by Wednesday afternoon and a special plane had to be sent to get more bottles to handle Thursday's load, Carlisle said.

Other living groups with a perfect record were the Gamma Phi, Kappa, Alpha Phi, Theta, Ethel Steel, SAEs, TKEs, Phi Deltas, ATOs and Lambda Chi.

Carlisle said most men's halls donated from 40 to 60 per cent, while a few dipped to about 20 per cent.

Carlisle lauded a number of students for the aid in the campaign. They were Barbara Parish, Ralph and Louetta Alley, Laird Montgomery, Dick Parsell, John Herreit, Sherry True and Maxine Parks.

He added, "I want to thank all others that helped and entertained plus the IK's and Spurs and the nurses aids for their cooperation."

Walkers Slow Traffic; Are Fed At Bitter End



Top: Approximately 100 students stretched out along the Moscow-Pullman highway on the first stage of the nine-mile trek. Bottom: Singing "We don't give a damn for the whole state of Washington," the marchers took a deep breath of sweet Idaho air and forged over the line into foreign territory.

Approximately 100 students skipped classes to show up for the Idaho Walkathon Wednesday afternoon in payment of a pre-game challenge by ASUI President Chuck McDevitt, Argonaut Editor Gary Pietsch and Sports Editor Don Neville Smith.

Leaving the Student Union Building at 2 p.m. with pockets bulging with apples, bubble gum, boots, gloves and a football from Moscow merchants, the Idaho students spent the next two and a half hours joyfully frolic along the Moscow-Pullman highway and tying up traffic for miles.

At the half way mark, Mike O'Callaghan, Executive Board member, drove out and set up a coffee and punch stand to revitalize the participants.

The WSC student body set up an elaborate reception for the weary foot-plodders. Met at Chuck's Drive-In by a group of Cow College horn blowers, the walkers were escorted up the hill to the WSC Compton Union Building.

A footbath was set up on the patio and introductions and presentation awards to the Idaho crew were served to everyone.

Twelve Hit 100 Per Cent. Twelve living groups chalked up 100 per cent donations for the drive. First to hit the magic number was the LDS house.

Winner of the drawing for the keg of beer donated by the Inter-Fraternity Council, were the Phi Tau who also bled 100 per cent.

Other living groups with a perfect record were the Gamma Phi, Kappa, Alpha Phi, Theta, Ethel Steel, SAEs, TKEs, Phi Deltas, ATOs and Lambda Chi.

Carlisle said most men's halls donated from 40 to 60 per cent, while a few dipped to about 20 per cent.

Carlisle lauded a number of students for the aid in the campaign. They were Barbara Parish, Ralph and Louetta Alley, Laird Montgomery, Dick Parsell, John Herreit, Sherry True and Maxine Parks.

He added, "I want to thank all others that helped and entertained plus the IK's and Spurs and the nurses aids for their cooperation."

Schools Host Architects Here

The annual meeting of the West Coast Architectural Instructors will be held October 27 at the Compton Union Building in Pullman and October 28 at the Faculty Club on the University of Idaho campus. About 50 architectural instructors from all of the Pacific Coast schools of architecture, Montana, Idaho and Utah are expected.

On Friday the group will discuss the scope of architectural education, aptitude tests for architectural students, and the use of television for education and public relations. Dr. Howard Barlow of the Washington State Institute of Technology will speak on research in architecture and architectural engineering at the luncheon meeting.

The buffet supper Friday evening will be held at the Moscow Hotel and Mr. Fred Bassetti, AIA, of Bassetti and Morse in Seattle, will speak on "The Beauties of Craftsmanship."

On Saturday Mr. Arthur Gallion of USC will discuss "Programming for ACSA," and a panel will be held on "Student Evaluation and Grading." A luncheon business meeting at the Moscow Hotel and an afternoon seminar on "The Peripheries of Architecture" will complete the convention.

LDS PLEDGE FRIDAY

Lambda Deltas will hold their pledge ceremony at 7:45 Friday evening. Members as well as prospective pledges are encouraged to attend. Following the pledging, MIA and LDS will sponsor a Halloween party. Plan to meet at the LDS institute promptly at 8:30

As a final display of good will, the three Idaho challengers each received a pair of shoes from Cy's Campus Sport Shop in Pullman.

The formalities over, the doors of the CUB recreation room were thrown open to the Idaho walkers and hot chili and apple cider was served to everyone.

As a final display of good will, the three Idaho challengers each received a pair of shoes from Cy's Campus Sport Shop in Pullman.

(Continued on Page 3, Col. 2)

# The Idaho Argonaut

Associated College Press

Official publication of the Associated Students of the University of Idaho issued every Tuesday and Friday of the college year. Entered as second class matter at the post office at Moscow, Idaho.

Gary Pietsch Editor

## Talk To Us

We thought the "Hutchins issue" was settled. Apparently we are wrong. The state commander of the American Legion, Leslie McCarthy, recently warned that the campaign against Dr. Hutchins would continue.

Dr. Robert M. Hutchins is considered one of the United States' prominent educators. When the University of Idaho Public Events committee chose to have him speak to the University student body, it was as an educator. Dr. Hutchins will also speak on education in his address.

Now, we would like to take issue with Mr. McCarthy over his stand on this problem. We recognize the right of the American Legion to expose any un-American actions or subversive persons. Not only is this their right but their duty as good Americans. However, the tactics used in connection with the Legion's attempt to discredit Dr. Hutchins are deplorable, childish, and even ignorant.

Just what is the Legion trying to do? Are they trying to prove that they can dictate to the students of the University of Idaho to whom they may listen and to whom they may not? If so it will not work. The students are intelligent enough to know that it is their right to hear whoever they please. They also know that every American has the right of free speech and no group can deny this right directly or indirectly. We are not a fascist or communist state. Furthermore the administration has shown that it cannot be bullied into cancelling a speaker.

Up to now what has the American Legion proven? As far as we can tell the answer is nothing! Some vague generalizations to the effect that Dr. Hutchins is "propagandizing the American people into believing that communism never has been and is not now a serious danger to this country," have been made. Now, if this is true just how much propagandizing can Dr. Hutchins do in an hour lecture? Furthermore if Dr. Hutchins did try to propagandize the students, who are intelligent people, he would have to make it so subtle they wouldn't understand it anyway. Also the Legion asserts that Dr. Hutchins believes "sinister forces under the pretext of fighting communism are the real danger and threaten the civil liberties of all Americans."

If this is a valid belief shouldn't we know the facts about it? Dr. Hutchins is also accused, by the Legion, of believing that "security measures are un-American and are being used to harness and persecute innocent people." If Dr. Hutchins believes this way why should he be denied his freedom to speak to the University students merely because of a belief?

Would we deny a man the right to speak because he believed in social security? This was once considered socialist so someone must be a socialist if he believes in it according to American Legion logic. The fourth point of the North Idaho Legion districts 1 and 2 resolutions, accuse Dr. Hutchins of stating that "intelligent and educated people are aware of these things, but are opposed by the ignorant who are being misled by evil demagogues." If this is Dr. Hutchins belief he is entitled to it as a free American.

What does all this prove? We feel it proves that up to now the American Legion has said nothing with a lot of words except we don't want Dr. Hutchins to speak at the University. Perhaps the American Legion and Mr. McCarthy, its state commander, have some evidence that the students should know about Dr. Hutchins.

But the proper thing to do would be to come to the University and tell the students and faculty instead of trying to organize the public into bullying the administration into cancelling the speech. Therefore if Mr. McCarthy has something concrete to present we challenge him to come to the University and let the students know instead of getting farther away than he already is to make his speech.

J. W. K.

## 'Labelism' Can Wreck Lives

This day and age seems to be a time for name-calling. We seem to have a hysteria for labeling anything or anyone we do not care for with some vague generalization. We wonder just how many people really know what some of the more common epithets really mean.

Do you really know what a man stands for when he is accused of being a "Liberal" or an "arch conservative"? And yet to some people these labels mean that the person they are applied to is no good, not worth listening to. How about the labels "egghead" or even communist and socialist; these two terms are really flung around with abandon. Recently a new term has come into popular usage. It is "security risk."

Let's examine the term security risk and see just what it means and how it is often misused. The popular conception of a security risk is that he must be a communist or at best a fellow traveler, whatever that means. Is this true? No, it is not!

A security risk may be a communist but not necessarily so. A security risk may merely be a person who talks about his secret work at home. Someone who keeps a very messy desk may be a security risk if he has valuable papers which might be lost or accidentally thrown away.

"Labelism" Hurts  
So people use words they know very little about, so what? This is "so what!" When a hysteria about an "ism" hits and the indiscriminate name-calling begins people get hurt. Not only do people get hurt in their feelings but they get hurt in many other ways.

Just how far can a politician, or a businessman, get if he has the stigma of an "ism" attached to him by careless name calling or unfounded charges? The answer is, not very far. But one of the worst features of name calling is that it is almost impossible to stop once it has begun. With this gossip started a person is guilty to his hearers until he proves himself innocent. And one person cannot get to all the places gossip does. Is this fair? Not by traditional American standards, which hold that a man is innocent until proven guilty.

Now what do we do about this fad, this "labelism" as Dr. Cross of our own political science department calls it? First we can recognize the danger "labelism" really is. Then, each of us as individuals can refrain from being guilty of "labelism." Furthermore when we hear any of these vague general terms flung at someone, we can, and should, challenge the person making the statement to tell us just what he means. Also, we should demand proof from such a person. Most of all we must guard against repeating idle gossip and becoming a follower of "labelism" ourselves.

## U. Is Distributive Education Center

The University of Idaho has been designated as the state's distributive business education teacher training center under the provisions of the federal George-Bardeen Act for Distributive Education, announced President D. R. Theophilus. Distributive education trains students to meet the public in selling and other business activities.

Regents' action followed a conference of University officials with George Denman, director of vocational education for Idaho, and Lyle V. Brenna, state supervisor of business education, and is in accordance with recommendations of the State Board for Vocational Education and the State Board of Education.

Although a program of distributive education is being re-activated in the state, Dean J. F. Weltzin of the college of education pointed out that the training of business education teachers has long been in operation at the University. But he added that the new designation will involve a closer coordination of University business teacher training activities with the state's distributive-business education program in high schools. Business education work at the



## Dear Jason

Having searched the Arg for some constructive usefulness, I am forced to the conclusion that nothing is as easy as criticism. I have a few tidbits to report in the hope that they may help to restore the look of a newspaper after the advertising circular of last Friday.

I am a member of the University marching band, and am getting a bit fed up with the attitudes of both the Arg staff and the student body in general toward that student group. We spend hours drilling in the cold, the rain and even sleet and hail on an often muddy, wet field to fix up a band show to entertain the people at games and as a service to the football team (?). In return the Arg offers only ignorant criticism and the student body and friends sit on their hands—too disinterested to give even polite applause to their own band much less a visiting band. Both the Idaho and WSC bands did good shows last week, but our sterling audience seemed more in a stupor than alive.

We don't get paid for this detail as do the athletes—also they aren't criticized in editorial comment even though they lose and lose and then lose again. We are contributing our time and effort for the University. We do not enjoy 2 1/2 mile parades or wearing sackcloth uniforms to the accompaniment of snide remarks and ridiculous comments from totally unconscious characters. The students certainly will not fall over each other to join an organization under these conditions. We too are human beings and the slop thrown in our faces regularly is discouraging to say the least and could result in the end of marching band on the campus. I am surprised that more students don't quit. They, at least, have the faith and belief that our band will one day be great.

The members of the band and the teachers are working against some pretty tough obstacles. Yes, we know that there are things wrong—better than non-musical Kruger will ever know, but a full stream of criticism won't help to correct them. A few of our big wheel journalists had better grow up to the kiddy-car stage at least before they start sounding off.

This may sound very uncollegiate, but try staying awake in psychology class—a little encouragement usually produces much better results than a kick in the teeth!

Carol B. Webster  
Yvonne Forte

## Dear Miss Webster and Miss Forte:

The two authors of the above letter seem to have taken the Argonaut's editorial as a personal affront. This is indeed unfortunate.

Jason has often thought that some musicians tend to be radical and emotional. In the case of these two women this hypothesis seems to be borne out.

It has been some time since the Arg staff has had the opportunity to reach such—as the writers themselves termed as "uncollegiate" writing. Jason doesn't consider that the letter rates an answer. It condemns itself. We can only consider the source, but we will refer you to today's Golden Fleece

## Art's Campus Barber Shop

THREE BARBERS  
"It Pays To Look Well"

**RESTAURANT**  
Guys that really rate make a dinner date!  
Want to Make a Good Impression?  
Bring Your Gal Here for Dinner!

**Varsity CAFE**

**STUDENTS**  
We are pleased to be the local agent of the United Pacific Insurance Co., the carrier of your Student Accident Coverage  
**WEISEL INS. AGENCY**  
512 So. Main Moscow Phone 2302

**DAVIDS'**  
**Collar 1 Days**  
Starts This Morning and Closes Tomorrow Night  
Savings of 20% to 50% on new Fall and Winter clothes for Campus wear. Nationally advertised items for both men and women. It's a golden opportunity to save. All charges are placed on next month's statements.

# Geology Field Trip Takes Many On All-Day Study

Some 247 geology and geography students embarked from Moscow's Union station last Tuesday at 8 a.m. on the second geology field trip to Orofino, Idaho.

Enroute stops were made at the Troy brick plant, to inspect the kilns, clay piles and general layout and a spot between Kendrick and Arrow, to see some latak formations some 20 million years old.

Here some very good leaf fossils were discovered. Finally the train on an old railroad bridge where different rock formations were observed.

Upon arrival in Orofino, the group was greeted by Mayor A. B. Curtis, J. C. president, Mr. Reece and probate judge, Ben Bear. From Orofino the group traveled by bus to Bruce Eddy, site of the proposed dam now under consideration by the Federal Power Commission.

After some time was spent here, they proceeded to the Orofino Cairn, a rock monument erected in memory of Lewis and Clark. Here a scroll signed by all members of the group was added to the other historical mementos to be encased in the Cairn. Judge Ben Bear read a poem, written by himself, and the group sang "Here We Have Idaho." From here they journeyed to the Orofino lime quarry after which the students were turned loose to tour Orofino proper for forty-five minutes until train time.

The train was provided with a baggage car which served as a diner, with food being prepared by the associated miners aided by professor K. E. Grimm. Also on the baggage car was a display of rock and mineral specimens.

When the train left for home the students received copies of the publication "The Golden Road to Adventure," published by the Orofino Brink and Half Club.

Is it necessary that the American Legion set itself up as the primary guardian of this liberty, to determine its administrations on the basis of its membership? If they are really interested in promoting a "more perfect union" why don't they spend their time promoting something of greater service to the community, such as "get-out-and-vote campaigns"?

If their desire has been publicity for the American Legion they have achieved it, but oh, what a bitter taste they are leaving in fellow Americans' mouths.

I challenge the American Legion to read the Constitution before they attempt to define liberty through their actions.

Dee Humphrey.

**On Campus** with Max Shulman  
(Author of "Barefoot Boy with Cheek," etc.)

## STRIKE UP THE BAND!

Learning the words of all the latest popular songs—as anyone must who wants to amount to anything on campus—becomes more and more difficult. Take last night. I had the radio on for no more than five minutes, and in that time heard two brand spanking new songs—a jump tune called *Rock With Me, Hymie* and a hillbilly ballad called *They're Hanging Ralph T. Sigafoss at Cock-crow*.

And that's the way it goes. New tunes are absolutely flooding the market. No wonder you're having trouble memorizing all the lyrics.

But you don't have to be dull about it. I mean, when a song is playing and you don't know the lyrics, don't just stand there singing *dum, dum, de, dum or la, la, la or vooom vooom*. That is very dull. Pick more interesting syllables—like *stimp gans* or *kretch dinkie* or *mlath roke*.

Take, for instance, *That Old Black Magic*. Let's say you forgot some of the lyrics. Try singing this:

*That old kretch dinkie  
Has me in its mlath,  
That old kretch dinkie,  
That I stimp so gans,  
Those icy dinkies  
Running down my stimp,  
That old kretch dinkie  
When your roke meets mine... etc.*

See? Interesting? What did I tell you?

But knowing the lyrics—or interesting substitutes—is not nearly enough. To really rate on campus, you must also be acquainted with odd and interesting facts about the composers. For example:

1. Irving Berlin's name spelled backwards is Givnri Nlreb.
2. Rodgers and Hammerstein can only write music while whitewashing a fence.
3. Ludwig von Beethoven's hobby was collecting cold sores.
4. One of our greatest songs was written because the wife of an impecunious composer came home one afternoon with a canteloupe and a dog named Lassie. "Why did you bring home a canteloupe and a dog named Lassie?" said the composer to his wife. "For the baby," she replied. The composer grew angry. "Here we are flat broke," he cried, "and you come home with a melon for the baby, a collie for the baby!" Suddenly, struck by an inspiration, he rushed to the piano and wrote *Melancholy Baby*.

5. Cole Porter writes all his songs with a popsicle stick on the side of a horse.

6. Hoagy Carmichael's hobby is spelling Irving Berlin's name backwards.

And what does the true music lover smoke? Why, Philip Morris, of corris! Why? Because Philip Morris is a song of a cigarette—a veritable symphony, a melody serene, a tone poem, a cantata, a lied, a chansonette, a fugue of one gentle puff upon another, *allegro* yet *dolce*, lively, mild, harmonious.

That's why.

To old Max's statements, the makers of Philip Morris, sponsors of this column, add this second chorus: Try today's gentle Philip Morris in the bright new red, white and gold pack.

**Classic Beauty Salon**  
Call 5181  
Complete Beauty Service  
114 East Third

**Wilson Sports Equipment**  
Basketball Shoes  
T Shirts  
Gym Shorts  
Sweat Shirts  
Sweat Pants

**Ward's PAINT and HARDWARE**

**University Drug**  
On Your Way Downtown

## CLASSIFIED

Three out of four traffic accidents happen in clear weather on dry roads.

LOST: Dangling gold ear ring for pierced ears. Gold with light blue square set. Lost around the Ad Building. Return to Registrar's office.

FOUND: Pair of clear plastic rimmed glasses with name R. Presby stamped on the inside of the frames. Can be claimed at Registrar's office.

FOR SALE: '41 Plymouth Coupe, good condition. Ph. 31078. Bonnie Dahmen, Route 1, Moscow.

**PELTON'S GRILL**  
713 Grand St. Pullman, Wash.  
FEATURING THE BEST HOME-COOKED FOODS—  
Delicious Bar-B-Que Sandwiches  
Steak Dinners given away every Friday night  
Caterers to College Trade and the place to meet your friends for your favorite beverage.

**BUDGET SPECIALS** for between meal snacks.  
**Willis Grocery and Market**  
531 S. Main

**STUDENTS**  
Call Here for Plane Reservations—  
West Coast Airlines  
United Airlines  
Northwest Airlines  
Phone 2485  
**Neely Travel Service**

**Classic Beauty Salon**  
Call 5181  
Complete Beauty Service  
114 East Third

**University Drug**  
On Your Way Downtown

**Wilson Sports Equipment**  
Basketball Shoes  
T Shirts  
Gym Shorts  
Sweat Shirts  
Sweat Pants

**Ward's PAINT and HARDWARE**

**DAVIDS'**  
**Collar 1 Days**  
Starts This Morning and Closes Tomorrow Night  
Savings of 20% to 50% on new Fall and Winter clothes for Campus wear. Nationally advertised items for both men and women. It's a golden opportunity to save. All charges are placed on next month's statements.

Friday, O  
Kapp  
At A  
Phi Ga  
at the ann  
the living  
erage for  
They also  
Council cup  
ing the high  
for the prec  
with a 2.55 a  
Chi Foundati  
awarded to t  
greatest sch  
over the prev  
up for this T  
Tau.  
Kappa Kap  
manent poss  
Garrard Da  
This cup is av  
living group  
highest schol  
preceding y  
possession is  
cup for three  
This trophy  
erage of 3.32  
the Junior P  
the pledge cl  
highest grade  
semester of  
The pledge a  
Dr  
Other tro  
assembly we  
Debate Cups  
women's livin  
tramural deb  
awarded to A  
Delta Tau I  
fraternity C  
awarded to t  
their pledge  
highest grad  
semester wit  
Many  
A total of  
scholarship  
University of  
D. R. Theoph  
said the figur  
80 women.  
Several sch  
announced f  
convocation.  
Ellis, Charle  
bano, Charl  
Omans, Barb  
tsch and Wil  
Ellis receiv  
Howe Foster  
member of I  
ternity who  
est scholasti  
sophomore a  
Foster, a for  
eral, is an a  
sity and a m  
ity.  
Miss Larso  
University sc  
fund was ac  
dent fines f  
parking and  
Manning, a  
make a care  
estate, receiv  
scholarship p  
the northern  
real estate h  
Journ  
The States  
Boise awarde  
students ma  
Miss Knight  
and Pietsch  
Albano, a  
of business  
plans to make  
his vocation  
the Idaho As  
Agents. An a  
presented th  
club \$30 scho  
Bliesner ro  
rotary winners  
the Associat  
ization for h  
ication "Idaho  
Scholas  
Five other  
ognition for  
scholastic ave  
will have the  
the Maude C  
ship pla q  
straight "A"  
Bullman, Sh  
Matthiesen, M  
Myrtle Willa  
who received  
Samuel Do  
ter shingle an  
ican Institute  
neers as the j  
engineering aver  
ademic aver  
man and sop  
Schultz, wri  
Gua  
W  
Rep  
JEWEL  
Corne  
Jewel  
3rd

# Kappas, Fijis Win Cups At Awards Presentation

Phi Gamma Ielta added three scholarship awards at the annual awards assembly Tuesday. Trophies won by the Fijis include the Alumni Scholarship Cup, awarded to the living group which attained the highest scholastic average for the preceding year with an average of 2.4.

They also won the Interfraternity Council cup for the fraternity having the highest scholastic average for the preceding semester, won with a 2.55 average and, the Sigma Chi Foundation Scholarship Trophy awarded to the fraternity with the greatest scholastic improvement over the previous year. The runner-up for this trophy was Phi Kappa Tau.

Kappa Kappa Gamma won permanent possession of the Beulah Garrard Dale Scholarship Cup. This cup is awarded to the women's living group which attained the highest scholastic average for the preceding year, and permanent possession is gained by winning the cup for three consecutive years.

This trophy was won with an average of 3.32. The Kappas also won the Junior Panhellenic trophy for the pledge class which achieved the highest grade average for the first semester of their freshman year. The pledge average was 3.18.

**Debate Cups**  
Other trophies awarded at the assembly were Delta Sigma Rho Debate Cups to the men's and women's living group winning intramural debate. These cups were awarded to Alpha Chi Omega and Delta Tau Delta. Another Interfraternity Council trophy was awarded to Delta Tau Delta for their pledge class achieving the highest grade average for the first semester with an average of 2.62.

**Many Scholarships**  
A total of 221 students received scholarships totaling \$43,286 at the University of Idaho this year. Dr. D. R. Theophilus, told students. He said the figure includes 141 men and 80 women.

Several scholarship winners were announced for the first time at the convocation. They include David Ellis, Charlene Larson, Brent Albano, Charles Manning, David Omans, Barbara Knight, Gary Pietsch and William Blesner.

Ellis received \$325 from the Carol Howe Foster trust fund as the member of Phi Delta Theta fraternity who maintained the highest scholastic average during his sophomore and junior years. Dr. Foster, a former U. S. congressman, is an alumnus of the university and a member of the fraternity.

Miss Larson received a general University scholarship of \$200. The fund was accumulated from student fines for illegal automobile parking and other traffic violations. Manning, a student planning to make a career in the field of real estate, received the \$200 McCarger scholarship provided by brokers of the northern division of the Idaho real estate board.

**Journalism Awards**  
The Statesman newspapers of Boise awarded two scholarships to students majoring in journalism. Miss Knight received a \$100 award and Pietsch \$50 from these papers. Albano, a student in the college of business administration who plans to make the field of insurance his vocation, received \$100 from the Idaho Association of Insurance Agents. An art major, Omans was presented the Moscow Fine Arts club \$30 scholarship.

Blesner rounded out the monetary winners, receiving \$24 from the Associated Engineers organization for his work on the publication "Idaho Engineer."

**Scholastic Achievement**  
Five other students received recognition for having the highest scholastic average as freshmen and will have their names inscribed on the Maude Cosho Houston Scholarship plaque. Posting perfect straight "A" averages were Alice Billman, Shirley Lenz, Theresa Matthiesen, Marie Van Orman and Myrtle Williamson. Other students who received awards included:

Samuel Dorcheus, student chapter shingle and pin from the American Institute of Chemical Engineers as the junior in chemical engineering who had the highest academic average during his freshman and sophomore years; Paul Schultz, wrist watch and trophy

inscription as the Chipman Sigma Chi Improvement award for being the sophomore member of the local chapter showing the most scholastic improvement.

Philip Edwards, name inscription on the Glen Knutson Memorial trophy given by the men of Willis Sweet hall for scholarship and demonstrated leadership ability; Margaret Johnson and Colleen McMahon, name inscription on the Mortar Board plaque as the junior woman who received the highest cumulative grade-point averages during her freshman and sophomore years.

Virgil Elisinger and John Crowley, name inscription on the Phi Eta Sigma Scholarship cup for outstanding scholastic achievement as freshmen; Elinor Johnson, name inscription on the Phi Upsilon Omicron plaque as the freshman woman in home economics outstanding in scholarship.

## Eight AFROTC Men Awarded

Air Force Reserve Officers Training Corps has announced the names of eight cadets who have received the high honor of distinguished AFROTC cadet. The cadets announced are, Cadet Col. James A. Hanzel, Cadet Lt. Col. Robert Speedy, Cadet Maj. Roy Merrell, Cadet Maj. Hans Gotsch, Cadet Maj. Keith Kalbfleish, Cadet Capt. James Steele, Cadet Capt. William Carlson, and Cadet 1st Lt. John Herrett.

The Distinguished AFROTC cadet must possess qualities of leadership, high moral character, and aptitude for military service. The cadets must have a high academic standing within the upper 25 percent of their class in the field which they are majoring in.

The cadet who receives the distinguished AFROTC award will have the opportunity to become a distinguished AFROTC graduate, which will allow him to make application for a commission in the regular Air Force.

## Here's More About Choices Named


Gamma Delta, vice-president; Cherie Bacon, Alpha Chi, secretary and Pat Rojan, Ethel Steele, treasurer.

Frosh primaried were Bill Deal, Fiji, vice-president; Cathy Cannon, Pi Phi, secretary, and Shirley Henrikson, Pi Phi, treasurer.

Other candidates nominated by the Student party included Pat George, ATO, senior president; Bill Friede, off campus and Bryant Lemon, Kappa Sig, junior president; Ken Krueger, Willis Sweet, Roger Tovey, Chrisman, and Corky Rossow, Upham Hall, junior treasurer; Ed Keller and Kent Marboe, ATO, sophomore president; Carl Rau, Kappa Sig, sophomore secretary; Jane Bonham, Delta Gamma and Sharrol Bartlett, Gamma Phi, sophomore treasurer; Gary Wagner, Kappa Sig, frosh president; Bill Gaboury, Willis Sweet, frosh secretary; and Kay Zenier, Ethel Steele, and Sarah Robertson, Delta Gamma, frosh treasurer.

Five other students received recognition for having the highest scholastic average as freshmen and will have their names inscribed on the Maude Cosho Houston Scholarship plaque. Posting perfect straight "A" averages were Alice Billman, Shirley Lenz, Theresa Matthiesen, Marie Van Orman and Myrtle Williamson. Other students who received awards included:

**The Admiral says**



**Ebonite**  
THE BALL THAT ROLLS BETTER

The Bowling Ball that Champions use. They get their own individual fit — a personalized grip from the EBONITE. Now with Curval and Bates Grips, they have greater control. Higher scores result with less fatigue and no sore thumb. Let us demonstrate to you how the famous Curval and Bates Grips will give you higher scores.

# Dance Theater-Berlin Appears In Concert

Dance Theater-Berlin will be presented Monday, October 31, in the Memorial Gymnasium, under the sponsorship of the Moscow Community Concert association and the ASUL. This will be the first Community Concert of the season.

Students are admitted to the concert on their ASUL activity cards. Featured on the program will be "Hamlet," an adaptation in five key scenes of Shakespeare's tragedy, set to music by Blacher. Other parts of the program will include "Labyrinth," music by Son-nenburg; "Hallads," music by Ment-telsson; "Orphee," the original Greek legend, set to music by Liszt; and "Souvenires," music by Offenbach.



Tatjana Gsovsky, artistic director of Dance Theatre-Berlin, ranks with the most challenging and original choreographers of our time. Her training as a dancer was received in the ballet schools of Moscow and St. Petersburg; but early in her professional career she found herself drawn towards creative composition.

She has found her deepest inspiration in the major works of literature and music. Though her activity is centered in West Berlin, where she conducts a dance academy, she has produced ballets for the leading opera houses of Europe and South America. Critics have praised her widely for the imagination, intensity and power of her choreography. She has created more than twenty principal works, many of them set to music written expressly for her by leading contemporary composers.

Gifted and brilliantly endowed, the Dance Theater-Berlin epitomizes the new spirit of the city which has been the scene of its triumphs. The fourteen dancers, each a recognized artist in his or her own right, have banded together to realize a bold objective. Exponents of the classical ballet, they nevertheless believe that the dance should also be great theater—not simply in its visual appeal, but in its dramatic themes and musical scores as well. This is the first American tour of the company.

Thirty-nine percent of the deaths and 35 percent of the injuries due to motor vehicle accidents last year occurred on Saturdays and Sundays.

The most disappointed man in Hollywood is the man who spent 100 dollars on a cure for halitosis, and then found that nobody liked him anyway.

Gifted and brilliantly endowed, the Dance Theater-Berlin epitomizes the new spirit of the city which has been the scene of its triumphs. The fourteen dancers, each a recognized artist in his or her own right, have banded together to realize a bold objective. Exponents of the classical ballet, they nevertheless believe that the dance should also be great theater—not simply in its visual appeal, but in its dramatic themes and musical scores as well. This is the first American tour of the company.

Gifted and brilliantly endowed, the Dance Theater-Berlin epitomizes the new spirit of the city which has been the scene of its triumphs. The fourteen dancers, each a recognized artist in his or her own right, have banded together to realize a bold objective. Exponents of the classical ballet, they nevertheless believe that the dance should also be great theater—not simply in its visual appeal, but in its dramatic themes and musical scores as well. This is the first American tour of the company.

Gifted and brilliantly endowed, the Dance Theater-Berlin epitomizes the new spirit of the city which has been the scene of its triumphs. The fourteen dancers, each a recognized artist in his or her own right, have banded together to realize a bold objective. Exponents of the classical ballet, they nevertheless believe that the dance should also be great theater—not simply in its visual appeal, but in its dramatic themes and musical scores as well. This is the first American tour of the company.

Gifted and brilliantly endowed, the Dance Theater-Berlin epitomizes the new spirit of the city which has been the scene of its triumphs. The fourteen dancers, each a recognized artist in his or her own right, have banded together to realize a bold objective. Exponents of the classical ballet, they nevertheless believe that the dance should also be great theater—not simply in its visual appeal, but in its dramatic themes and musical scores as well. This is the first American tour of the company.

Gifted and brilliantly endowed, the Dance Theater-Berlin epitomizes the new spirit of the city which has been the scene of its triumphs. The fourteen dancers, each a recognized artist in his or her own right, have banded together to realize a bold objective. Exponents of the classical ballet, they nevertheless believe that the dance should also be great theater—not simply in its visual appeal, but in its dramatic themes and musical scores as well. This is the first American tour of the company.

Gifted and brilliantly endowed, the Dance Theater-Berlin epitomizes the new spirit of the city which has been the scene of its triumphs. The fourteen dancers, each a recognized artist in his or her own right, have banded together to realize a bold objective. Exponents of the classical ballet, they nevertheless believe that the dance should also be great theater—not simply in its visual appeal, but in its dramatic themes and musical scores as well. This is the first American tour of the company.

Gifted and brilliantly endowed, the Dance Theater-Berlin epitomizes the new spirit of the city which has been the scene of its triumphs. The fourteen dancers, each a recognized artist in his or her own right, have banded together to realize a bold objective. Exponents of the classical ballet, they nevertheless believe that the dance should also be great theater—not simply in its visual appeal, but in its dramatic themes and musical scores as well. This is the first American tour of the company.

Gifted and brilliantly endowed, the Dance Theater-Berlin epitomizes the new spirit of the city which has been the scene of its triumphs. The fourteen dancers, each a recognized artist in his or her own right, have banded together to realize a bold objective. Exponents of the classical ballet, they nevertheless believe that the dance should also be great theater—not simply in its visual appeal, but in its dramatic themes and musical scores as well. This is the first American tour of the company.

## Kappas, LDS Lead Campus Scholastically

Kappa Kappa Gamma sorority continued its domination of University of Idaho living group scholastic marks by posting better than a "B" average for the entire 1954-55 school year, according to figures released today by Registrar D. D. DuSault. The top men's living group was the LDS house with 2.75.

In winning second semester scholastic honors with a 3-21 grade-point score, the 55 Kappa women, made it four semesters in a row in which they have bettered the "B" average. They have now won the University scholarship race six consecutive semesters and eight out of the last nine semesters.

Pressing the Kappas' yearly average of 3.22 were two other sororities with 2.9 marks — Pi Beta Phi, 2.96, and Gamma Phi Beta, 2.91. Following the high three houses in the women's division were Delta Gamma, 2.89; Kappa Alpha Theta, 2.87; Alpha Phi, 2.82; Forney hall, 2.75; Ethel Steel house, 2.58, and Hays hall, 2.47.

Following LDS in the men's competition were Phi Gamma Delta, 2.49; Sigma Chi, 2.47; Delta Tau Delta, 2.46; Phi Kappa Tau, 2.44; Chrisman hall, 2.43; Willis Sweet hall, 2.43; Delta Sigma Phi, 2.40; Beta Theta Pi, 2.38; Delta Chi, 2.38; Sigma Alpha Epsilon, 2.35; Sigma Nu, 2.35; Phi Delta Theta, 2.29; Idaho Club, 2.28; Lindley hall, 2.27; Alpha Tau Omega, 2.22; Tau Kappa Epsilon, 2.19; Kappa Sigma, 2.17, and Campus Club, 2.11.

Yearly averages were not available for Alpha Chi Omega and Delta Delta Delta sororities, Lambda Chi Alpha fraternity and Pine hall.

The most disappointed man in Hollywood is the man who spent 100 dollars on a cure for halitosis, and then found that nobody liked him anyway.

Yearly averages were not available for Alpha Chi Omega and Delta Delta Delta sororities, Lambda Chi Alpha fraternity and Pine hall.

Yearly averages were not available for Alpha Chi Omega and Delta Delta Delta sororities, Lambda Chi Alpha fraternity and Pine hall.

Yearly averages were not available for Alpha Chi Omega and Delta Delta Delta sororities, Lambda Chi Alpha fraternity and Pine hall.

Yearly averages were not available for Alpha Chi Omega and Delta Delta Delta sororities, Lambda Chi Alpha fraternity and Pine hall.

Yearly averages were not available for Alpha Chi Omega and Delta Delta Delta sororities, Lambda Chi Alpha fraternity and Pine hall.

Yearly averages were not available for Alpha Chi Omega and Delta Delta Delta sororities, Lambda Chi Alpha fraternity and Pine hall.

Yearly averages were not available for Alpha Chi Omega and Delta Delta Delta sororities, Lambda Chi Alpha fraternity and Pine hall.

Yearly averages were not available for Alpha Chi Omega and Delta Delta Delta sororities, Lambda Chi Alpha fraternity and Pine hall.

Yearly averages were not available for Alpha Chi Omega and Delta Delta Delta sororities, Lambda Chi Alpha fraternity and Pine hall.

## LITTLE MAN ON CAMPUS by Dick Bibler



## Weed Control Group To Meet

Idaho's third annual weed control short course will be held November 14-19 at the University of Idaho, announced Lambert C. Erickson, weed research agronomist, who will be in charge of the event. This course is sponsored by the department of agronomy of the University at the request of the Idaho Noxious Weed association.

Between 75 and 100 county weed supervisors, county commissioners, commercial sprayers, herbicide dealers, federal and state weed control workers are expected at the course.

For the state's county weed supervisors the five-day event is a training school. They will even get a final examination at the end of the course, plus a diploma certifying they have completed all the work.

"While the county weed supervisors will be here as students, the welcome mat is out for everyone having anything to do in the big field of weed control. They are welcome as listeners, at any or all of the sessions. Anyone who wishes may take the final examination to determine what they learned at the course."

The role of cropping and rotations in weed control will be stressed at the 1955 course, Erickson indicated. Information on the new-

er weeds in Idaho also will be presented.

er weeds in Idaho also will be presented.

er weeds in Idaho also will be presented.

er weeds in Idaho also will be presented.

er weeds in Idaho also will be presented.

er weeds in Idaho also will be presented.

er weeds in Idaho also will be presented.

er weeds in Idaho also will be presented.

er weeds in Idaho also will be presented.

# Chamber Of Commerce Hears Theophilus Speak

University President D. R. Theophilus gave his annual fall "report" on the institution before Wednesday's Moscow Chamber of Commerce meeting.

## Gamma Phis Lure Most Men At Nickel Hop

Gamma Phi produced the most fem appeal in luring \$39 from men to take top money honors in the annual Nickel Hop sponsored by the Spurs, with all female living groups on campus participating.

Theta grabbed second spot, collecting \$36, while the Kappas and Alpha Chi pushed for third and fourth position, dragging in \$34 each.

A grand total of \$328.28 was gleaned from Idaho males, as compared to \$267 collected last year. "It was twice as big as last year and more fun," claimed Sharrol Bartlett, Spurs treasurer.

Giving the male population a chance to appease their need of female association, dozens of girls were to be had for the asking if the nickel fee for 15 minutes of dancing was forthcoming. Co-chairmen of the marathon dance were Jan Willis and Dot Drayton. All living groups had a closed Friday night, so every gal was available.

Dr. Theophilus complimented Moscow for "providing a wholesome atmosphere" in which University students live. He said that it was "gratifying" that last year 70.8 per cent of all men on the campus and 67 per cent of the women students participated in some form of intercollegiate or intramural sport.

He closed by saying it was anticipated plans for a new \$1,300,000 library would be completed early in December and a call for bids be made during the winter for an early spring start on construction.

IT PAYS TO ADVERTISE.  
J. F. GRAY, O.D.  
Idaho First National Bank Bldg.  
Phone 31-111  
OPTICAL SERVICE  
Lenses Duplicated  
Modern Frames

entering teams should register with Charles Oldham, Phi Kappa Tau. Judges for the toureny will be members of Delta Sigma Rho, national speech honorary.

Oldham said there would be five rounds of debate as the teams competed for a trophy which was won by Don Lawrence and Allen Compton of the Delta Tau Delta house last year.

Living groups entering teams at the present time are SAE, Willis Sweet, Phi Tau, Sigma Chi, Beta, Delta Sigma Phi, and Delta Tau Delta. Other houses interested in

Living groups entering teams at the present time are SAE, Willis Sweet, Phi Tau, Sigma Chi, Beta, Delta Sigma Phi, and Delta Tau Delta. Other houses interested in

Living groups entering teams at the present time are SAE, Willis Sweet, Phi Tau, Sigma Chi, Beta, Delta Sigma Phi, and Delta Tau Delta. Other houses interested in

Living groups entering teams at the present time are SAE, Willis Sweet, Phi Tau, Sigma Chi, Beta, Delta Sigma Phi, and Delta Tau Delta. Other houses interested in

Living groups entering teams at the present time are SAE, Willis Sweet, Phi Tau, Sigma Chi, Beta, Delta Sigma Phi, and Delta Tau Delta. Other houses interested in

Living groups entering teams at the present time are SAE, Willis Sweet, Phi Tau, Sigma Chi, Beta, Delta Sigma Phi, and Delta Tau Delta. Other houses interested in

Living groups entering teams at the present time are SAE, Willis Sweet, Phi Tau, Sigma Chi, Beta, Delta Sigma Phi, and Delta Tau Delta. Other houses interested in

Living groups entering teams at the present time are SAE, Willis Sweet, Phi Tau, Sigma Chi, Beta, Delta Sigma Phi, and Delta Tau Delta. Other houses interested in

Living groups entering teams at the present time are SAE, Willis Sweet, Phi Tau, Sigma Chi, Beta, Delta Sigma Phi, and Delta Tau Delta. Other houses interested in

## Seven Men's Teams Enter Debate Tourney

Seven living groups have entered teams in the men's intramural debate tournament to be held November 5 in the SUB starting at 9 a.m., announced Charles Oldham, chairman of the men's debate toureny.

Oldham said there would be five rounds of debate as the teams competed for a trophy which was won by Don Lawrence and Allen Compton of the Delta Tau Delta house last year.

Living groups entering teams at the present time are SAE, Willis Sweet, Phi Tau, Sigma Chi, Beta, Delta Sigma Phi, and Delta Tau Delta. Other houses interested in

Living groups entering teams at the present time are SAE, Willis Sweet, Phi Tau, Sigma Chi, Beta, Delta Sigma Phi, and Delta Tau Delta. Other houses interested in

Living groups entering teams at the present time are SAE, Willis Sweet, Phi Tau, Sigma Chi, Beta, Delta Sigma Phi, and Delta Tau Delta. Other houses interested in

Living groups entering teams at the present time are SAE, Willis Sweet, Phi Tau, Sigma Chi, Beta, Delta Sigma Phi, and Delta Tau Delta. Other houses interested in

Living groups entering teams at the present time are SAE, Willis Sweet, Phi Tau, Sigma Chi, Beta, Delta Sigma Phi, and Delta Tau Delta. Other houses interested in

Living groups entering teams at the present time are SAE, Willis Sweet, Phi Tau, Sigma Chi, Beta, Delta Sigma Phi, and Delta Tau Delta. Other houses interested in

Living groups entering teams at the present time are SAE, Willis Sweet, Phi Tau, Sigma Chi, Beta, Delta Sigma Phi, and Delta Tau Delta. Other houses interested in

Living groups entering teams at the present time are SAE, Willis Sweet, Phi Tau, Sigma Chi, Beta, Delta Sigma Phi, and Delta Tau Delta. Other houses interested in


Living groups entering teams at the present time are SAE, Willis Sweet, Phi Tau, Sigma Chi, Beta, Delta Sigma Phi, and Delta Tau Delta. Other houses interested in

Living groups entering teams at the present time are SAE, Willis Sweet, Phi Tau, Sigma Chi, Beta, Delta Sigma Phi, and Delta Tau Delta. Other houses interested in

Living groups entering teams at the present time are SAE, Willis Sweet, Phi Tau, Sigma Chi, Beta, Delta Sigma Phi, and Delta Tau Delta. Other houses interested in

**Guaranteed Watch Repairing**  
JEWELRY REPAIR  
Corner Drug & Jewelry Store  
3rd and Main

**The Admiral says**



**Ebonite**  
THE BALL THAT ROLLS BETTER

The Bowling Ball that Champions use. They get their own individual fit — a personalized grip from the EBONITE. Now with Curval and Bates Grips, they have greater control. Higher scores result with less fatigue and no sore thumb. Let us demonstrate to you how the famous Curval and Bates Grips will give you higher scores.

**The Outdoor Shop**

Here's an *Invitation*  
**TO SENIOR MEN AND GRADUATE STUDENTS**  
in Engineering, the Physical Sciences, Business Administration, and Arts and Science to come in on **Monday, Oct. 31 and Tuesday, Nov. 1**  
and discuss a career in the fast-moving fields of communications and electronics.

Representatives from these companies will be on hand to answer your questions:

- PACIFIC TELEPHONE**  
...needs both technical and non-technical graduates for engineering and other types of telephone operating work in five Pacific Coast states.
- BELL TELEPHONE LABORATORIES**  
...wants technical graduates for research and development work in communications and electronics with one of the world's foremost research laboratories.
- WESTERN ELECTRIC COMPANY**  
...needs engineering and business administration graduates to work on the manufacturing, distribution, and installation of telephone equipment, and for field engineering on special electronic devices.
- SANDIA CORPORATION**  
...has openings for graduates in electronics and physical sciences for applied research, development, and design on ordnance phases of atomic weapons.

PLEASE SIGN UP IN ADVANCE AT  
ENGINEERING HALL (Technical Students) PLACEMENT BUREAU (Non-technical Students)

**Hair Cutting**  
by Experienced Stylists  
**Betty Gay Ramona Alice**  
DIAL 2384  
**ALICE'S Beauty Shop**  
208 N. Main O'Connor Bldg. Moscow

**THE GEM SHOP**

Tiny as a Twinkle... and TINY in Price, too

HEATHER. New tiny beauty and so accurate. \$3.75

\$3.75 AND UP

The New **ELGIN PETITES**

DANIA. Smaller and smarter Elgin "Petite" for her. \$4.25

RAMONA. Tiny fashion. Gold filled expansion bracelet. \$4.95

ELGIN with Guaranteed Unbreakable DURAPOWER MAINSPRING

Price list. Fed. Tax

**The Gem Shop**  
Pay as little as \$1 A WEEK

**ESPECIALLY FOR YOU**

A full year's subscription to any one of these three great weekly magazines at these reduced prices... for college students only. Take **TIME**, **The Weekly Newsmagazine**, for less than 6¢ a week... or **LIFE**, America's favorite pictorial, for less than 8¢ a copy... or **SPORTS ILLUSTRATED**, the first national sports weekly, for less than 8¢ an issue.

The purchase of one magazine does not require the purchase of another; your special student prices are good for all or any of these three weeklies.

Sign up today at the campus bookstore or with your college agent.

**TIME \$3.00**  
**LIFE \$4.00**  
**SPORTS \$4.00**



**ARROW "PAR"**

puts more style in your "STYLE ZONE" **\$3.95**

A widespread flatterer—Arrow Par with soft, slotted widespread collar for a smooth-looking, neat-fitting "style zone". Torso-tapered for fit... of "Sanforized"® white broadcloth. Smarten your wardrobe, your own appearance with Arrow Par.

**CREIGHTONS**  
AREA'S OLDEST CLOTHIERS  
Our 65th Year

# Sweden, USA Differ In Morals And Dress

By Dale Evans

Siv Bergstrom, exchange student from Sweden, believes that Swedish people are not immoral. Morals in the United States are not brought into the open, as they are in Sweden. Siv also stated that Swedish schools are more academically inclined with less social life and extra-curricular activities. Siv is among eighty foreign students attending the University of Idaho this year. She is an exchange student from Sweden, living on the campus at the Delta Gamma sorority house. She is a senior majoring in Chemistry.

One of the most interesting topics to discuss lately, is the recently published article in Time magazine about the morals in Sweden. The article was detrimental about the morals of Swedish people and according to Siv, a lot of ideas that have developed here in the United States have definitely been in the wrong.

The difference in the morals of Sweden and of the United States is that in Sweden, morals are more openly discussed and people do not try to conceal their moral conduct as much as they do here. In Sweden, the dating situation is different than here, for people of college age do not date as much as they do here, but date more on a "steady" basis, for a longer length of time. However, most of the dances are "stag," rather than date.

### Extensionists Come 'Home' For Meetings

Idaho extension service personnel—county agents, home demonstration agents, and specialists—will turn "homeing pigeons" as they journey here for their annual extension conference on the University of Idaho campus next week.

The conference will get underway October 31 for a five-day program of training, interviewing of "home base" personnel in various departments, and formal sessions.

G. T. McAlexander, northern Idaho district county agent supervisor and chairman of this year's conference program explained, the purpose of the conference plans, training the staff further in program methods and development, will occupy a major portion of the five days. Much of this year's program is based on suggestions coming from agents and specialists in the field in an effort to bring more and better service to farm and urban people of Idaho's communities, McAlexander pointed out.

Many University dignitaries will address the conference during the five days. University President D. R. Theophilus, Dean J. E. Kraus, and Associate Director Carol Youngstrom of the Extension Service are high on the list of speakers. R. D. Ensign, associate director of the Agricultural Experiment Station, will review Idaho's research for the group.

McAlexander's figures show that Idaho now has 42 county agents in as many of the state's 44 counties, and 27 county home demonstration agents work with women's groups. Sixteen counties have assistant agents who help agents and home agents carry on Idaho's rapidly expanding 4-H Club work.

### Walkath Is Elected ASAE Vice-Proxy

The student branch of the ASAE met Tuesday night, October 25 in the Agricultural Engineering building. President Gerald Gentry announced that Chuck Wahrath was elected second vice chairman of the Northwest Section of ASAE at the meeting held in Portland the past weekend. Also he announced that next year's annual meeting will be held at Penticton, B. C. A film entitled, "A Farm is a Factory," was shown. It showed the various applications of labor-saving devices in doing daily chores the electric way.

comprised of upperclassmen who are also from the part of the country from which the new students come.

Another difference in college life in Sweden in comparison to the United States, is the problem of the proper thing to wear to school. Siv stated that in Sweden, girls are more apt to wear suits and heels.

Though there are many differences in the ways of life of Americans and of Swedish people, Siv has compared them and feels a strong inclination to remain here in the United States instead of going back to Sweden this summer. She said she was going to write for transportation accommodations to Sweden right away for her trip home this summer, before she definitely made up her mind to remain here.

### Senior Coeds — Watch For WAC Lt. November 2-3

Lieutenant Helen L. Peterson of the Women's Army corps will be on campus November 2 and 3 to interview senior coeds interested in becoming WAC officers. Those interested in discussing possible commissions may contact her at room 103 in Memorial gymnasium.

Direct commissions as second and first lieutenants are being offered women between the ages of 20 and 33 who have college backgrounds, and who have the mental and character qualifications required of applicants desiring to become WAC officers. Ten career fields are now open to WAC officers.

A summer training program is also being offered for college juniors who are interested in applying for commissions in their senior years. This program calls for a probational appointment, with a six-week training period prior to the senior year.

Lt. Peterson points out that the summer course is designed to let the applicant know more about the WAC and whether she wants to apply for a commission during her senior year, and to let the Army determine whether she should be encouraged to continue for further career training and experience with the WAC.

Both the newly-commissioned officers and juniors attending the summer training program will receive training at Fort McClellan, Alabama, home of the new WAC center.

A graduate of Colby Junior college, Lt. Peterson is a former air-line hostess. She accepted a direct commission in 1952.

# Grants Earned By Many New And Old Students

The following list of students have been awarded scholarships from various companies and organizations as listed below:

Alumni Association of University of Idaho—Diane J. Allen, \$125; Donald E. Woodward, \$125. America Smelting and Refining Company—George A. Hayes, \$500; Boise Panhellenic—Carolyn Edwards, \$400. Crown Zellerbach Foundation—Robert Speedy, \$500. Davis Brothers Scholarship Fund—Charles Eckery, \$200; Arlene Moffat, \$200. Eastern Star—Eleanor M. (Nan) Soden, \$250. Elementary Teaching Scholarships—new students: Agnes Mardell Bergman, \$200; Carolyn Flat-ters, \$115; Daphne Hellemons, \$150; Beverly Lord, \$115; Celia Roberts, \$115; Old Students: Evelyn Evans, \$115; Leslynn Rogers, \$57.50; Margaret Sullivan, \$115; Eleanor Tatko, \$115; Cherrie Wood, \$115.

First Security Foundation—Jamie Steele, \$500; Charles Werry, \$500; Norma Callender, \$110.80. (bal. from BJC scholarship). Foster Forestry Scholarship—Jayme Pinheiro, \$500. Hecla-Bunker Hill Scholarships—Carole Jane Beck, \$165; Curtis C. Bondurant, \$250; Marlene G. Griggs, \$200; Jack L. Cleveland, \$200; Harold L. Damiano, \$300; Daniel A. Dunsmore, \$250; Daphne A. Hellemons, \$300; Merlin J. Hendrickson, \$200; Paul S. Kennedy, \$300; Clara Lowry, \$250; Glen P. McCurdy, \$300; Felix J. Marcolin, \$240; Harold E. Mason, \$250; Tom Meunier, \$300; Richard Miles, \$250; Maurice K. Nasser, \$300; H. Raflee, \$300; Ronald L. Voss, \$280; Raymond Waxmonsky, \$300; George E. White, \$250. Mrs. John Henderson—Mary Ellen Ogston, \$133.25.

Idaho Farm Electrification Committee Scholarship—Harold Bruby, \$100. Ketchikan, Alaska, Lions Club—James Asaph, \$375, bal. A. E. Larson Scholarship Fund—Theodore J. Young, \$250. McCargar Scholarship—Harriet Hanna, \$100; Virginia Sturgess, \$250. Moscow Lions Club Scholarships—Agnes M. Bergman, \$50; Larry Gottschalk, \$50; Nancy Johann, \$50; Rudy Johnson, \$50; Larry LaBolle, \$50; Jim Nelson, \$50. Music Scholarships—Edward W. Kale, \$120; Robert Whipple, \$120; Elizabeth V. Hintze, \$120. News-Review—William Harrison Gaboury, \$125. PTA Teacher Education Scholarship—Alice Louise Giroux, \$100;

Maxine D. Harris, \$100; Lee Thomas Insko, \$100; Diane Olmstead, \$100. Potlatch Forests Foundation, Inc. Scholarships—Renewals: Roger Hansen, \$150; Duane Moore, Mary Ellen Bennett, \$300; Mary Verburg, \$300; Cleora Andres, \$350; Gordon B. Taylor, \$150; Thomas Turpin, \$300. Janis Archibald, \$200; Marigay Nelson, \$300; Burton Luvaas, \$200; Judith Flomer, \$300; New Scholarships: Doris Bonner, \$150; Jack Hogan, \$150; Michael Peterson, \$300; F. Dennis Shoemaker, \$150; Jerry Lee Tucker, \$250; Richard Leopoldy, \$250; Ben Traub, \$300; Janice McKarber, \$75; Aljean Higgins, \$300; Janille Young, \$20; Gaylon Warford, \$300; John Kroiss, \$250; Lewis Button, \$300; Donald Dun-can, \$300; Maxine Harris, \$180. Potlatch Forests Fellowship—Robert McCallister, \$1,500. Presser Foundation—Karen Hurdstrom, \$250. Parma PTA—Erlene Lund, \$100; Ralston Purina—Darrell Kalbfleisch, \$500. Sears-Roebuck Foundation—(a) From various stores: Richard Hughes, \$250; Duane James, \$100; Jimmy Kay, \$100; Jerry Prescott, \$100; (b) Agriculture: Donald Albertson, \$150; Franklin Allen, \$150; Artel Amos, \$150; Earl Ban-ner, \$150; William G. Carlson, \$150; Lyle Mayes Cheney, \$150; Lloyd Kimpton, \$150; Glen Linder, \$150; Eugene McCoy, \$150; Gary Ringert, \$150; Ronald A. Schwartz, \$150; Kim Roy Vawter, \$150; Jim Ray Wood, \$150; Ricard Goodby, \$150; Herbert Gibson, \$150; Quinton Rogers, \$250.

Howard and Linnie Shriver Scholarships—Harold McEwen, \$125; Mitzi Switzer, \$125. Standard Oil Scholarships—(a) FFA: Jack Grant, \$250; Stephen Hinckley, \$250; Richard Kerbs, \$200; Larry Moore, \$350; Kenneth E. Solt, \$300; (b) 4-H: Deana Dykstra, \$300; Donna Hamilton, \$200; Lynette Hawkins, \$350; Suzanne Roffler, \$250. Tuition Scholarships—Out of state (general) (a) Old: Dale Brandt, Bruce Buckman, David Cummins, James Eggleston, Edward Johnson, Karen Krauss, Donald Nelson, Theodore Schumaker, Suzanne Struck, Charles W. Wil-son, Betty Wiswall, (b) New: Thomas Anderson, Jackie Brown, Sharon Connaughton, Donald Fasket, David Nash, Douglas Seely, Donald Smith.

Elementary Education—Gerald Ainsworth, Sherie Bacon, Janice Berg, Sonya Bowker, Glenda Grady, Helen Hanford, Carol-Jean Mor-han, Sherry Oleson.

# Business Depts. Congregate At Seattle U. Meet

Seattle University will be host to the annual Northwest University Business Administration Conference on Oct. 28, 29 and 30. One hundred faculty representatives from 13 member schools in four states and Canada are expected to attend the meeting. It will be the first meeting of the conference at Seattle University.

Schools to be represented include the University of Washington, Washington State College, College of Puget Sound, Gonzaga University, Lewis and Clark College, the University of Oregon, Oregon State College, Portland University, the University of Idaho, Montana State College, the University of British Columbia and the University of Alberta.

Purpose of the annual conferences is the continuing development of standards for business schools in Northwest colleges and universities. General theme of this year's meeting will be the value to industry of a college degree in business administration.

Discussion groups will be organized in seven specialized fields. They include accounting, finance, foreign trade and transportation, insurance, management and industrial relations, marketing and advertising statistics. Representative businessmen in these fields have been invited to take part in the conference for the first time this year.

James Vernon Metcalf, assistant professor of commerce and finance at Seattle University, is chairman of the conference arrangements committee. He is currently president of NUBAC.

The conference will close at noon on October 30 so that delegates, may also attend the fall meeting of the Pacific Northwest Trade Association which gets underway in Seattle October 31.

# Cosmo Club Serves 200 Sandpointers

Some 200 persons were served in the Cosmopolitan Club banquet Saturday in Sandpoint, sponsored in conjunction with the Sandpoint Civic Club.

Featuring a variety of foreign dishes, the banquet also had a display of articles from various countries, and a variety show including Winston Dryema playing a Nigerian drum, Arne Thune giving Scandinavian songs on an accordion, and Doctor Ali Armeer Molez, playing Persian songs on a mandolin. French and Norwegian songs were sung also.

The banquet netted about \$75 to support, and help remodel and rebuild the International House. Co-chairmen of the banquet were Jean Weston and Hosen Rafiee. La Rene Newberry was in charge of cooking.

A sorority is a group of girls living in one house, with a single purpose . . . to get more girls to live in one house, with a single purpose.

chairman of the conference arrangements committee. He is currently president of NUBAC.

The conference will close at noon on October 30 so that delegates, may also attend the fall meeting of the Pacific Northwest Trade Association which gets underway in Seattle October 31.

# Bawl Attracts Many; Bar-B-Q Proves Popular

About 80 couples danced to the music of the Harmonettes last Saturday night at the Ag Bawl, held in the SUB ballrooms.

Lois Judd and Willard Lindsey were awarded the prize for the best dressed couple at the dance. The intermission entertainment was furnished by Kappa Kappa Gamma.

The FFA Bar-B-Que, held prior to the dance, was attended by about 180 people. Jim Bryant and his staff of cooks turned out a meal of chicken, rice, carrot sticks, ice cream and cocoa.

The Ag Club wishes to extend its appreciation to the Kappas for their help with the entertainment.

Patronize Argonaut Advertisers

# All Girl Play Is Next For ASUI

Edmund Chavez, assistant professor of dramatics, announced the date of tryouts for the next ASUI drama production, "The House of Bernarda Alba."

The show will have an all girl cast of 13 and tryouts are scheduled for 7 p.m. Tuesday in the University Auditorium. Chavez will direct the show.

Edmund Chavez, assistant professor of dramatics, announced the date of tryouts for the next ASUI drama production, "The House of Bernarda Alba."

The show will have an all girl cast of 13 and tryouts are scheduled for 7 p.m. Tuesday in the University Auditorium. Chavez will direct the show.

Patronize Argonaut Advertisers

### Educational Differences

Siv is very academically-minded, a trait which was developed while she attended Swedish schools. She believes that there is a great difference between the education systems of Sweden and of the United States. Students in Sweden begin their schooling in an elementary school, similar to our grade schools, then in a lower secondary school, similar to our high schools.

The main difference between the upperclasses of the elementary school and the lower secondary school, is that the curriculum of the lower secondary school emphasizes more foreign languages and mathematics. The level of educational training is in the uppersecondary school.

The last two years in an upper secondary school is considered equivalent to the junior college courses of the freshman and sophomore college years in the United States. Therefore, Siv enrolled here on a junior class level, since "she had attended an upper secondary school in Sweden before coming here to the University of Idaho.

After the main school training is over, a student may attend one of Sweden's four universities. They offer essentially graduate work, beginning at a stage corresponding to the junior or senior college years in the United States. Arts and natural sciences are stressed.

There are a number of schools which specialize in technology, forestry, commerce, dentistry, etc. Besides the universities and specialized schools, there are also a number of private schools for vocational and correspondence training. At nearly all schools, students without means or with only limited means can secure state scholarships which facilitate their studies considerably.

### Social Life Limited

Social activity in Swedish universities is limited more than here, according to Siv. A school week in Sweden lasts Monday thru Saturday, therefore, the students do not have as much time for social life and extra-curricular activities. Organizations, similar to our fraternities and sororities, called "nations" are formed on Swedish campuses. The men and women do not live in the clubs, since the clubs are used only for social entertainment. Students usually live in homes and apartments near the campus. The "nations" are comprised of students from different sections of Sweden. In other words, students from a certain section of Sweden join a "nation" which is

## Singer Sewing Shop

Prompt Service  
Repairs and Adjustments  
Machine Rentals

See Us for a Good deal on a New or Used Machine

### SINGER

Phone. 32781 121 E. 3rd St.

SPACIOUS SEATING

# VARSAITY

ACRES OF FREE PARKING

## HELD OVER FOR ONE MORE WEEK!

Great as a play... Sensational as a movie!

# Mister Roberts

IN COLOR

starring HENRY FONDA · JAMES CAGNEY · WILLIAM POWELL · JACK LEMMON

## Flowers and Gifts for all occasions

Distinguished Planters and Plants (In Season)

### SCOTT'S Flower Shop & Greenhouse

Phone 7191

# Maxine's

## 3rd ANNIVERSARY

their gift to you is 3 pair of lovely sheer Nylons FREE with every \$16.00 purchase. . . . 6 pair for a \$30.00 purchase and so on. Special Rack of Dresses . . . values to \$29.95 for \$5.00 and \$10.00

## C'MON POODLE, LET'S DROODLE!

WHAT'S THIS? For solution, see paragraph below.

"IT'S TOASTED" to taste better!

CONFUSION REIGNS in the Drooodle above, titled: Switchboard operated by absent-minded Lucky smoker. Poor girl's been swamped by too many phone calls. But she isn't confused about better taste—she smokes Luckies. Luckies taste better, first of all, because Lucky Strike means fine tobacco. Then "It's Toasted" to taste even better . . . cleaner, fresher, smoother. Switch to Lucky Strike yourself. You'll say it's the best-tasting cigarette you ever smoked—and you won't have your wires crossed, either.

DROODLES, Copyright 1953 by Roger Price

Students! EARN \$25.00!

Cut yourself in on the Lucky Drooodle gold mine. We pay \$25 for all we use—and for a whole raft we don't use! Send your Drooodles with descriptive titles. Include your name, address, college and class and the name and address of the dealer in your college town from whom you buy cigarettes most often. Address: Lucky Drooodle, Box 67A, Mount Vernon, N.Y.

MAN STEPPING ON GUM  
Jerry Bach  
Kent State

TREHPICK  
Takahashi Shida  
Los Angeles City College

SALE—50% OFF  
Jimmy N. Brewer  
Henderson State T.C.

FLYING SAUCER CHASING ROCKET SHIP  
Leslie Poindexter  
Sarah Lawrence

## LUCKIES TASTE BETTER - Cleaner, Fresher, Smoother!

Q.A.T. Co. PRODUCT OF The American Tobacco Company AMERICA'S LEADING MANUFACTURER OF CIGARETTES

## \$ DAY at the Mezzanine Music Shop

Located at HODGINS DRUG STORE

### SALE ON RECORDS

78's 45's LP's

## BARGAINS

Friday, A Mod "Confusio pledges w serenaded a Hallowe with the WILLIS SW Cec Heicl been enga the annual be held ton chairman, volunteers" the decorat Ford will b the dance - A lot of v Willis Sweet Forney Hal the annual change. No but an enj a prize for New prof and Mrs. Jo to a good st through an Louis Rems ing hand a GAMMA PI Mrs. Car rector, me last week. New ple Carolyn Ed na Gurtser, Olmsted, re Magnuson, tary; Glad and Niki I man. We wish for the bea made invitir annual Hall Monday nig Quietness last Mond took their s thank the the Phi Ta tertain the Plans arnual pledge member 12 TAU KAPP The ann successfully evening wi "Autumn I patroness Lawrence Fred Steve George Ra Recent c Mr. and M Carol; Bill son. Visiting t from the A Behre ('54 his new as AFB, Idaho DELTA TA Eight m called the music for t tomorrow general ch and plans ning will Delt and Delt Gar pinning to S Sunday eve Pledges as the dat honoring th Congratu pledges for top honors SIGMA NU Formal Sunday fo

Ke NO CINEMA THY Olivia de H

SUN. — MC HUMF GE

"LEI 0

NU NO GREGORY PECK TECHNOLOG

SUN. —

# Apple Bobbing Is Halloween Trick

A Model-T is the unique conveyance to be at Sweet's "Confusion Dance" this evening, while the Kappas honor pledges with a formal dance at the house. Boo! Phi Deltas serenaded Gamma Phis by candlelight to invite the gals to a Halloween party. Sigma Nus and WSH bobbed for apples with the Alpha Chis and Forney to celebrate October 31. WILLIS SWEET HALL.

Cec Heick and his Notables have been engaged to furnish music for the annual "Confusion" dance to be held tonight. Ralph Hill, dance chairman, and crew of "artistic volunteers" are busily preparing the decorations. A 1917 Model-T Ford will be an added feature of the dance — for pictures? A lot of wet heads were seen as Willis Sweet men and guests from Forney Hall bobbed for apples at the annual Halloween dinner exchange. No winners were judged but an enjoyable evening proved a prize for everyone.

New proctor and hostess, Mr. and Mrs. John Blessinger, are off to a good start in guiding the hall through another successful year. Louis Remberg is lending a helping hand as assistant proctor.

**GAMMA PHI BETA**  
Mrs. Carl Koppe, province director, met with house officers last week.

New pledge officers include: Carolyn Edwards, president; Deanne Gurlsen, vice president; Diane Olmsted, recording secretary; Elma Magnuson, corresponding secretary; Gladys Hansen, song leader, and Niki Doerr, activities chairman.

We wish to thank the Phi Deltas for the beautiful candlelight serenade inviting Gamma Phis to the annual Halloween party to be held Monday night.

Quietness settled over the house last Monday night as the pledges took their sneak. Members want to thank the "sneakers" for inviting the Phi Tau pledges over to entertain the lonely members. Plans are underway for the annual pledge dance to be held November 12.

**TAU KAPPA EPSILON**  
The annual pledge dance was successfully staged last Saturday evening with the theme being "Autumn Leaves." Patrons and patronesses included Mr. and Mrs. Lawrence Golding, Lt. and Mrs. Fred Stevenson and Mr. and Mrs. George Radcliffe.

Recent dinner guests included Mr. and Mrs. Adrian Anderson and Carol; Bill Yarber and Alan Johnson.

Visiting the house while on leave from the Air Force is Lt. Roger Behre ('54), who is en route to his new assignment at Mt. Home AFB, Idaho.

**DELTA TAU DELTA**  
Eight men of music from WSC called the "Pastels" will furnish music for the annual pledge dance tomorrow night. Dave Powell is general chairman of the affair and plans indicate that the evening will be greatly enjoyed by Deltas and dates.

Delt Gary Dixon announced his pinning to Susie Oberg, Kappa, last Sunday evening.

Pledges have set November 11 as the date of the pledge party honoring the members.

Congratulations to last year's pledges for pulling through with top honors in scholarship.  
**SIGMA NU**

Formal initiation will be held Sunday for Rusty Carbon, John

the girls had any particular trouble breaking the traditional paddles on the "honored" pledges.

Thanks to the DG pledges for the picnic given on Sunday for the "Little Phis."

**BETA THETA PI**  
Men around the Beta house have been striving to beat last year's 104 per cent blood drive record. Reports indicate a better showing this year.

Originality at the pledge dance was represented by the autumn landscape surrounding the dance floor.

Pledges to members — thanks for the outstanding function Saturday night.

## Martin, Weltzin Go To Boise Meeting

Dr. Boyd A. Martin, dean of letters and science and Dr. J. F. Weltzin, dean of education will journey to Boise over the coming weekend to attend a meeting of the Committee of Liberal Arts Colleges of Idaho.

Dr. Weltzin will address the group on the subject of teacher education, after which the group will discuss the various problems of the separate institutions. Membership on this committee is limited to the dean of the liberal arts college and the president of the institution.

Evidently the pajama dance was again a success because none of



## Lewis-Clark Draws From 14 Counties

Fourteen counties and 30 towns of Idaho are represented among the 134 students attending Lewis-Clark Normal school in its first year, a survey revealed today.

The Idaho counties include Benewah, Blaine, Bonner, Canyon, Clearwater, Idaho, Latah, Lewis, Nez Perce, Owyhee, Payette, Shoshone, Twin Falls and Washington. Three other states are also represented—Ohio, California and Washington.

If one more of the students were a man, the numbers of men and women students would be exactly even. There are 66 men and 68 women. Twenty of the students are war veterans—18 men and 2 women. Married students total 28—12 men and 16 women.

## Cosmo Club To Remodel Its House

Plans to remodel the International House are being made by the Cosmo Club. The International House is maintained by the Cosmo Club as a meeting place and as a place for some of the international students to live.

At the present time the upstairs of the house cannot be used, partly because of the lack of a stairway. Sverre Daehli, chairman of the work committee, stated that it will take quite a bit of work and material to achieve the goal of making the house serve its most useful purposes.

There are five students living in the downstairs portion of the house. This causes inconvenience to the club when it has meetings and inconvenience to the students when they give up their study time and home to the group.

The problem can be solved by building a stairway and some re-decorating of both the upstairs and downstairs portions of the house. However, due to the club's activity of sponsoring a student at the University, the treasury is quite depleted now. Anyone having any building material, such as old float lumber, or wishing to make a donation to the club is urged to see any club member or Bernard Henderson, club president.

Hollywood wife — A girl who's been married six times and never had an anniversary.

## Many Clubs Hold Halloween Fetes

Halloween parties are on tap this week for the church groups.

**ROGER WILLIAMS FELLOWSHIP**  
A scavenger hunt mixed with fun and fellowship will highlight the Halloween party to be held October 29 at 8 p.m.

Sunday coffee hour will be from 9:30 to 10 a.m. followed by a discussion group.

**WESLEY FOUNDATION**  
Regular meeting of Wesley Cabinet at 8:45 tonight. Transportation in the form of a hayride will be furnished Saturday afternoon to get to Mortenson's to cut lumber. Also included will be a campfire meal costing 25 cents. Meet at the CCC at 1 p.m.

The Halloween hike for destinations unknown will leave Sunday at 5 p.m. Program for the evening will run past the regular adjourning hour and will include food, square dancing, and games. Costumes are not necessary but prizes will be awarded for the best ones.

**CANTERBURY**  
Reverend Blewett will speak on "Personal Adjustments in Marriages," this Sunday. The guest counselor will be Dr. J. Millard Fleming, associate doctor at the infirmary.

A very enjoyable time was spent with the WSC Canterbury last Sunday.

**WESTMINSTER FORUM**  
Lee Anderson will speak on his

trip to Europe at the Westminster Forum meeting Sunday from 6 to 7 p.m. The annual "Retreat" will be November 4, 5, and 6.

**DISCIPLE STUDENT FELLOWSHIP**  
Meet at the Christian Church at 7:30 Friday night to attend the hayride sponsored by the DSF group.

Regular meeting of oDSF Sunday from 5 to 7:30.

**GEM PROOFS DUE**  
Deadlines for returning Gem proofs were announced today. Women's Greek proofs are due at the photographers Nov. 9. Houses are to turn in activities shots by Friday, Nov. 4.

Independent Women's proofs are due Nov. 21, which is positively the last possible time for Gem individual shots. Students are urged to get their pictures taken, according to Gem editor Jamie Steele.

Co-ed College—Where the girls go in for facts and the boys go in for figures.

**Dr. J. Hugh Burgess**  
OPTOMETRIST  
O'Connor Building  
Phone 2344  
Complete Laboratory Service

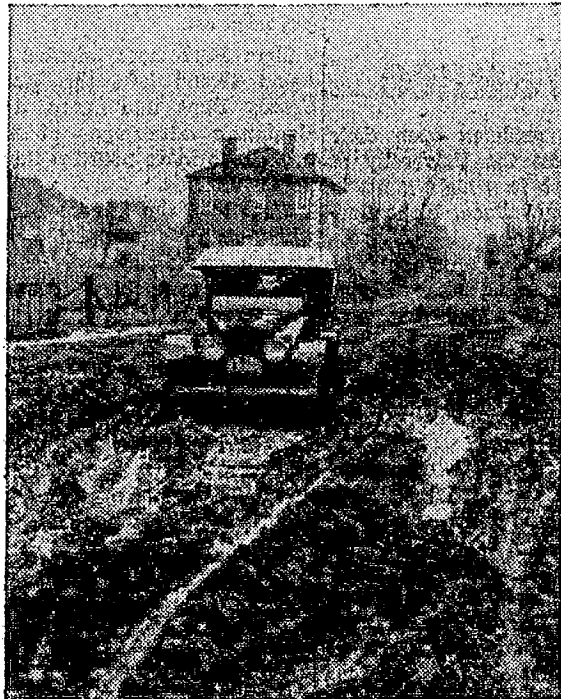
# Don Nielsen

That old black magic paved the way for sixty million cars

"Ever notice how the success of one product will often create a demand for another?"

"Back around the turn of the century, for instance, Union Oil couldn't sell much gasoline because there were only 4100 or so cars in the country and no good roads. We did most of our business in kerosene and fuel oils.

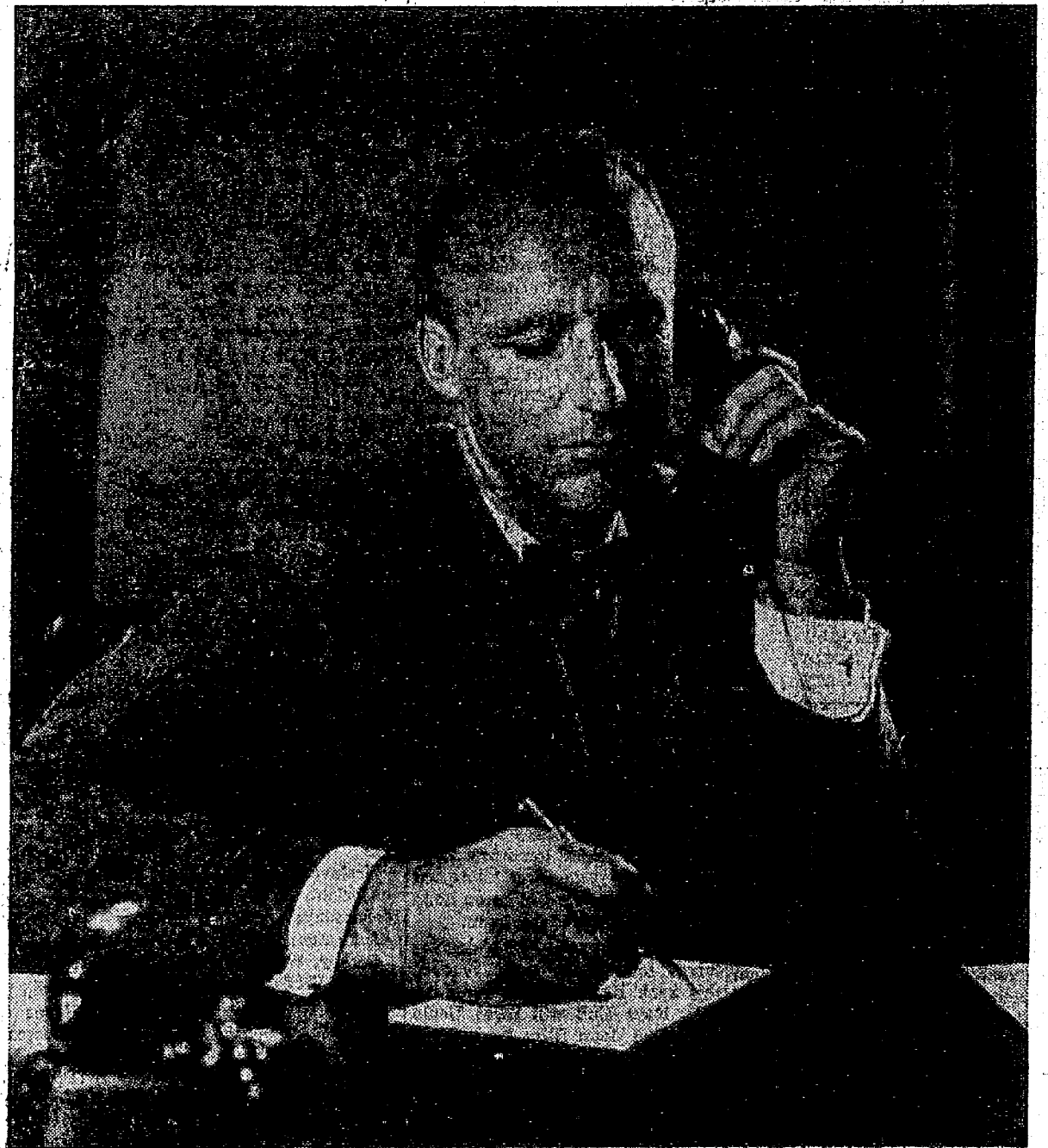
"It soon became apparent that if we were to sell more gasoline there'd have to be more and safer roads.



"Fortunately, Union has always had a large supply of crude oils ideal for making asphalt. So we started producing a simple product you could pour right on the road.

"That old black magic took the motorist out of the mud and paved the way for 60,000,000 cars.

"Today, we're one of the largest producers of asphalt on the West Coast. We maintain plants and storage facilities in seven cities and make over eighty different grades.



"Today, too, you enjoy thousands of miles of good roads. And asphalt covers 86% of them.

"Gasoline? We're selling more of that now than anything else!"

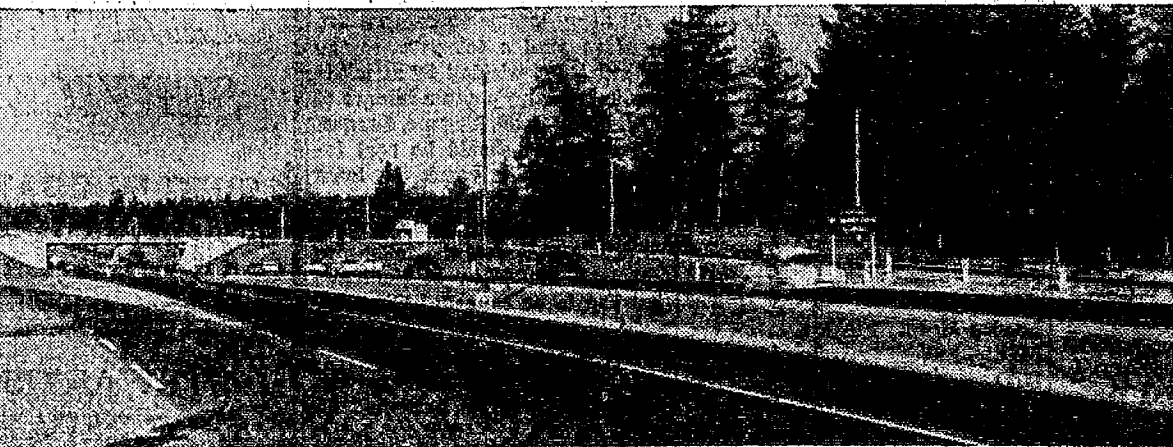
As Don Nielsen—Mr. Asphalt in our home office—points out, one successful product does help another.

A single carload of asphalt transformed into a highway now creates a demand for at least one thousand gallons of gasoline a year.

Asphalt's large share of the market is due to its own inherent merits. It is far superior to any competitive paving material in ease of application, in load-bearing ability, in long life and in safety. What's more, it costs less per mile to put down and to maintain.

Asphalt is another example of a better product bringing its benefits to more people through America's free competitive economy.

YOUR COMMENTS ARE INVITED. Write: The President, Union Oil Company, Union Oil Bldg., Los Angeles 17, Calif.



# Union Oil Company OF CALIFORNIA

MANUFACTURERS OF ROYAL TRITON, THE AMAZING PURPLE MOTOR OIL

**DISTINGUISHED FLORAL ARRANGEMENTS & GIFTS**  
CORSAGES A SPECIALTY  
Free Delivery  
**Moscow Florist & Gift Shop**  
112 W. 6th Phone 2156

**We've A Snack for Super Snacks**  
**The NEST**

50 million times a day at home, at work or on the way

There's nothing like a

# Coke

1. SO BRIGHT IN TASTE... nothing like it for sparkling, tangy goodness.
2. SO QUICKLY REFRESHING... nothing like it for a bracing bit of energy, with as few calories as half an average, juicy grapefruit.



BOTTLED UNDER AUTHORITY OF THE COCA-COLA COMPANY BY EMPIRE COCA-COLA BOTTLING COMPANY—401 C Street, Lewiston, Idaho

"Coke" is a registered trade-mark.

© 1955, THE COCA-COLA COMPANY

**Kenworthy**  
NOW SHOWING  
**CINEMASCOPE COLOR by De Luxe**  
**THAT LADY**  
Olivia de HAVILLAND • Gilbert ROLAND  
SUN. — MON. — TUES. — WED.  
HUMPHREY BOGART  
GENE TIERNEY  
in  
**"LEFT HAND OF GOD"**  
NOW SHOWING  
**NUART**  
THE **PURPLE PECK** PLAIN  
SUN. — MON. — TUES.  
**A BULLET FOR JOE**  
ROBINSON • RAFT • TOTTER

# VANDALS SHOOT FOR HIGH FLYING DUCKS

## Stahley Plans Extensive Use Of Sophs At Eugene

Idaho Vandals, 36 strong, left yesterday evening at 6:45 by train for Eugene, Oregon where they will tangle with the speedy Oregon Ducks Saturday afternoon.

Four players were left behind including Ed Hilder, out with a broken jaw, Mel Schmidt, 200 lb. junior halfback from Coeur d'Alene, who is still suffering from a bad knee, Tony Anderson, lanky sophomore tackle, who is attending his father's funeral in North Dakota, and reserve halfback Don Faraca who will miss the game on account of a bad leg.

Coach Skip Stahley stated in an interview just before the team took off that he planned to use plenty of sophomores and give them a lot of experience that they should have received in small doses.

Stahley was full of optimism, stating that although his men would be up against the toughest team they have met this season, they would make a very creditable showing and perhaps even surprise a few of the experts.

Idaho set their defenses this past week for an expected powerful running attack from Oregon's fast backfield. Arizona's running game gave the Vandals a lot of trouble and Stahley stated that they can expect an even rougher time from the Webfoots.

The skipper named four sophomores in the starting lineup, including guard Jerry Smythe who is crashing the starting eleven for the first time this season. Wayne Walker will be at center, where he has performed brilliantly so far this year.

Quarterback Howard Willis, who ranks third among the Coast Con-

ference passers and left halfback Larry Norby will be the other two sophomore starters.

Fleetfooted Wilbur Gary is slated for the starting job at fullback and little Ron Braden will be at right half, to round out the starting backfield.

Other backfielders slated for considerable duty are Cal Hilgenberg, who has recovered from a knee injury, halfback Ray Bittner, also is just off the injury list and Bill Baxter, a hard running halfback from Seattle.

Roger Randolph, third highest pass receiver in the PCC and junior Pete Gerpheide will open at the end slots. Dick "Tiny" Foster and Marsh Jones will be the tackles and Eivind Resa will team with Smythe at the guard positions.

Sophomore tackle, Jerry Kramstating, junior guard Chuck Fries and another sophomore, center Dan Davis are also expected to see plenty of action, according to Stahley.

The Ducks will send a different leader in every defensive department against Idaho as the Ducks look for their third straight victory this year. Tom Crabtree is expected to do most of the throwing for Len Casanova's squad and will receive able running support from his highly mobile backfield mates, Jack Morris at fullback and Dack James and Jim Shanley at the halves.

The weather outlook for Eugene is for rain which could help the Vandals considerably in the fact that it will slow down the fast moving Oregon ground game.

KRPL will carry a play-by-play description of the game starting at 1:15 p.m.

TENTATIVE LINEUPS									
Yellow and Green					Silver and Gold				
No.	Pos.	Player	Wt.	Ht.	Yr.	Home	No.	Pos.	Player
33	LE	George Slender	187	6-1	Jr.	Santa Rosa	88	LE	Pete Gerpheide
76	LT	Lon Stiner	213	6-1	Sr.	Westfir, Ore	70	LT	Marsh Jones
66	LG	Reanous Cochrane	198	5-9	Jr.	Coos Bay	60	LG	Jerry Smythe
51	C	Art Weber	196	6-2	Sr.	San Carlos	53	C	Wayne Walker
84	RE	Phil McHugh	185	6-1	Jr.	Portland	63	RG	Eivind Resa
74	RT	John Raventos	214	6-0	So.	Menlo Park	77	RT	Dick Foster
67	RB	Spike Hillstrom	189	5-8	Jr.	Coos Bay	85	RE	Roger Randolph
12	QB	Tom Crabtree	188	6-1	Jr.	Coos Bay	14	QB	Howard Willis
30	RH	Jim Shanley	168	5-8	So.	North Bend	43	RH	Ron Braden
24	LH	Dick James	174	6-0	Sr.	Grants Pass	25	LH	Larry Norby
40	FB	Jack Morris	188	6-9	So.	Medford	37	FB	Wilbur Gary

### Willis Third In Passing; Randolph High In Receiving

The Vandals from the U of I go into tomorrow's grid clash with Oregon as cellar-dwellers in the Pacific Coast Conference. Oregon currently has a secure hold on fourth place in the standings with a 1-2 record.

The Vandals, who were idle last weekend, do, however, have some notable records this week in the team and individual performance categories.

In pass offense, Idaho is in Number 4 spot with 45 pass completions in 107 attempts. Here the silver and gold outdo the Webfoots, now in seventh place.

### Idaho WRA Hosts WSC In Hockey

Idaho WRA will be host to the WSC wra field hockey team in a game to be played tomorrow morning at 9:30 a.m. Any interested fans are encouraged to be on hand to cheer for the Idaho team.

The finals in the WRA doubles tennis tournament were reached this week. Kathy Marlett and Sally Bell, Hays Hall will meet Ueula Gray and Joan Bliss from Ethel Steel House in the championship match to be played early next week.

### Helldivers Pledge Eighteen Students

Eighteen students will be initiated into the Helldivers, university swimming honorary Monday, according to Bud Van Stone, publicity chairman for the organization.

New members are Dottie Bilby, Jim Lund, Peggy Brink, Barbara Keller, Vern Davis, Sue Struck, Marilyn Nugent and John Armistage, will also be initiated.

### Idaho WRA Hosts WSC In Hockey

The Vandals in punt returns with five for a total of 53 yards gained. They also claim fourth in kickoff returns with a total of 20 for 399 yards.

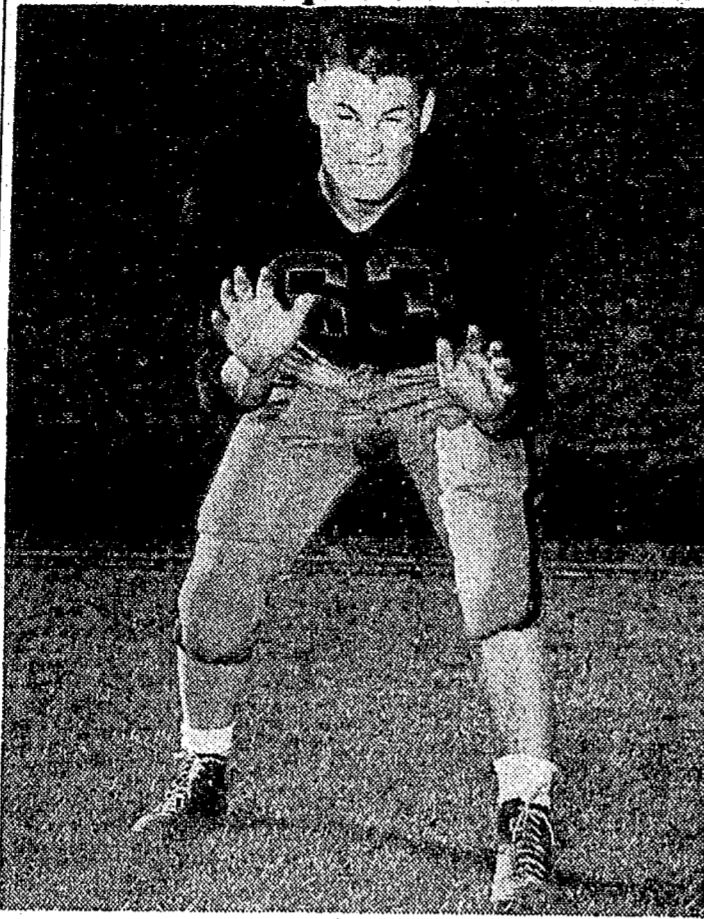
In the remainder of the divisions, total offense, interceptions, punting, rush defense, pass defense and total defense, the hapless Vandals are on or near the bottom.

Howard Willis, ace Idaho quarterback, is currently in third place in passing with 25 completions out of 66 attempts. Willis is also twelfth in total offense and fourth in punting with 15 boots for 565 yards.

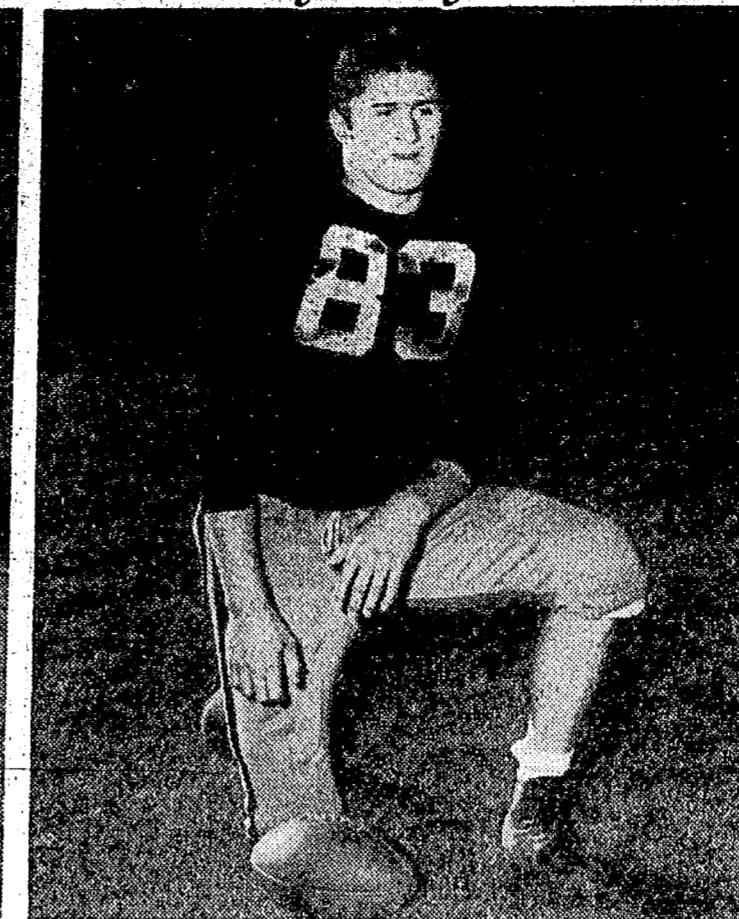
Third in kickoff returns is fullback Wilbur Gary with 148 yards in six carries.

Right end Roger Randolph has caught 13 passes successfully and churmed out 116 yards in advances for third spot in the PCC standings. Larry Aldrich, another end, has dropped to ninth place this week in the same category.

## Sophomores Slated For Heavy Duty



Jerry Smythe, 200 pound sophomore guard from Burley, will break into the starting lineup for the first time this season tomorrow when the Vandals meet the Oregon Ducks at Eugene.



Larry Aldrich, another sophomore, pictured above, is ticketed to see plenty of action also tomorrow. The rangy 192 pounder has shown up extremely well in games to date and ranks ninth in pass receiving on the coast.



Intramural Football Scores			
Tuesday:			
GH 1	WBF	over	IC 1
LH 2	WBF	over	CH 2
CH 1	20 LH	1	0
BTP	21 SAE	12	
Wednesday:			
DTD	23 SN	0	
CC 1	15 WSH	1	12
BTP	12 DSP	6	
DC	12 KS	0	
PDT	27 SC	2	
LH 1	WBF	over	IC 1
SAE	WBF	over	PKT
Monday Schedule at 4:10 p.m.			
Field 1	WSH 1	vs	CH 1
Field 2	IC 2	vs	CC 2
Field 3	TKE	vs	BTP
Field 4	DSP	vs	SAE
Field 5	SC	vs	KS
Field 6	PKT	vs	ATO
Intramural Tennis Results (First Round)			
Monday:			
Russ, DTD	def.	Hood, SC	
Schoenwald, PGD	def.	Folk, UH	
Lofdahl, WSH	def.	Perry, DSP	
Westergren, BTP	def.	Watson, ATO	
Floan, GH	def.	Bivens, KS	
Johnson, DC	def.	Smith, CC	
Lawrence, IC	def.	Flynn, PKT	
Tuesday:			
Crawford, PDT	def.	Neals, SC	
Powell, SAE	def.	Woelfel, SN	
Kuga, PKT	def.	Hronek, GH	
Evans, PGD	def.	Schwartzkopf, DSP	
Westover, SAE	def.	Leech, CC	
Albright, PDT	def.	Royeres, IC	
Wednesday:			
Ackerman, ATO	def.	Kaiser, KS	
Conger, WSH	def.	Brogdon, UH	
Judd, PKT	def.	Nosek, SN	
Gwinn, WSH	def.	Wescott, SN	
Dexter, DC	def.	Belton, ATO	
Cook, SAE	def.	Lynch, SC	
Thrall, IC	def.	Eggelston, CC	
Schedule: Monday, Oct. 31st			
Mercer, PDT	vs	Norell, PKT	
Court 2			
Lindberg, LH	vs	Williamson, UH	
Court 3			
Pappas, PGD	vs	Scholes, DTD	
Court 4			
Martin, TKE	vs	Hahn, DSP	
Court 5			
Boyles, BTP	vs	Donaldson, GH	
Court 6			
Russ, DTD	vs	Schoenwald, PGD	
Court 7			
Intramural Football Standings			
League I	W	L	Pct.
PGD	7	0	1.000
TKE	5	2	.714
BTP	5	2	.714
DSP	4	3	.571
SAE	4	3	.571
LCA	2	5	.286
PKT	1	6	.143
TMA	0	7	.000
League II	W	L	Pct.
PDT	6	0	1.000
DTD	5	1	.833
SN	3	2	.600
SC	2	4	.333
KS	2	4	.333
DC	2	4	.333
ATO	1	5	.167
League III	W	L	Pct.
CH1	5	0	1.000
CC1	5	1	.833
LH1	4	2	.667
WSH1	3	2	.600
GH1	2	4	.333
UH1	1	5	.167

## VandalBabes Meet Mont. At Wallace

The frosh gridmen open their season against the University of Montana frosh in a night game to be played at Wallace, Idaho Saturday.

Coach Clem Parberry said he would take a squad numbering 32 to Wallace. He added that very little is known of the Montana yearling team but that they are said to have a good building program under way which could mean a good squad.

Although plagued with several injuries, the starting lineup looks good. Those who will probably not see action due to injuries are End, Cecil Aldrich; Halfback Mike Lawler; Quarterback, Keith Buhler; and Guard, Darrell Daubert.

### Probable Starting Lineups

Idaho	LER	Montana	Stolop
White	LTR		Dixon
Hogan	LGR		Bockman
Hayes	C		Brickley
Roussos	RGL		Renning
Grose	RTL		Kennedy
Prestel	REL		Evenson
Bourque	Q		Montgomery
Davidson	LHR		Connors
Missetch	RHL		Wright
Hall	F		Dunn
Owens			

### NOTICE

Operation tele-pep No. 1. All living couples on campus are urged to send a telegram to the football team wishing them good-luck in Saturday's game in care of the Eugene Hotel, Eugene, Oregon.

These wires should be sent tonight in order to reach the team tomorrow morning, according to head cheer-leader, Dale Carlisle. Carlisle said that the telegrams will take the place of the rally that had to be cancelled Thursday night.

An old man saw a younger one with a bottle in his hand and his arm around a girl. "What a foolish waste of time," he said. "You can drink when you're old."

DR. Wm. B. DURBON  
Optometrist  
Professional Building  
Phone 3-1501  
Complete Laboratory Service

## CHALK TALK

with Don Neville Smith

Len Casanova's squad from Oregon look just too tough for the thin-ranked Vandals this Saturday. Idaho is due to break loose with a scoring binge sometime this season but it looks doubtful whether this weekend will be the time. Injuries and wet weather will slow the Vandals down.

The Ducks possess speed to burn in both their backfield and line and Idaho is noted for having a rough time stopping a fast running game. We'll stick with the best looking squad on paper and pick Oregon to win by one or two touchdowns. However, the Ducks will know that they have been in a football game before the final gun goes off.

Clem Parberry's talented frosh squad should take the Montana Grizzly Pups into camp, despite Montana's advantage of having two weeks more practice than the junior Vandals.

We'll take the Vandal Babes to win their first test of the season by one touchdown. UCLA should have a breather this weekend when they meet a weak California team. Prediction: UCLA by four touchdowns.

USC travels to Minneapolis to meet the Golden Gophers of Minnesota. USC looks too strong in this one, so we'll pick them to win by a couple of scores.

### Hands Full

The cross state boys from the Cow College will have their hands full when they tangle with the rough, tough COP Tigers at Stockton, Saturday night. COP should cop this one by at least seven points.

Look for the Washington Huskies to get back on the winning side this weekend by whipping Oregon State. Stanford steps out of the con-

### Perfect Record

The contest shapes up as one of the best in the nation this season. Navy has a perfect record of 5 consecutive victories and the Fighting Irish have been steadily improving since their 21 to 7 loss to Michigan State.

The majority of the so-called experts pick ND to win by 1 or 2 points, however, we'll go against them for once and pick the Mid-dies to come through with win number six for the year, by a one touchdown margin.

"Sire, Lady Godiva rides without." Sire (after grancing without): "Very tactfully put, my man."

Illustrations Lettering  
**SIGNS**  
Call Fran Lambert, 28695

## Four Teams Unbeaten In Intramural Football

With only one more game left to complete the regular intramural football schedule, four teams, Phi Gamma Delta, Phi Delta Theta, Chrisman Hall 1, and Lindley Hall 2, have perfect records. One of this quartet is almost certain to be intramural football champion.

The Fijis in League I have won the most games of the perfect record squads. They hold a two game edge over the runnerup Betas and Tekes, who are tied for second with 5 and 2 records.

### Only Loss

In League II the Phi Deltis sporting a 6 and 0 record finished one game ahead of the Deltis. The Deltis only loss was suffered at the hands of the league leaders by a 6 to 0 score.

Chrisman Hall's perfect record may possibly fall when they meet Willis Sweet Monday in the one remaining game before the play-offs.

Campus Club 1, with a 5 and 1 record, could tie Chrisman for the lead in League III if Willis Sweet currently in fourth pulls an upset.

### One Game

Lindley Hall 2 in League IV holds a one game edge over Upham Hall. Lindley has won six contests.

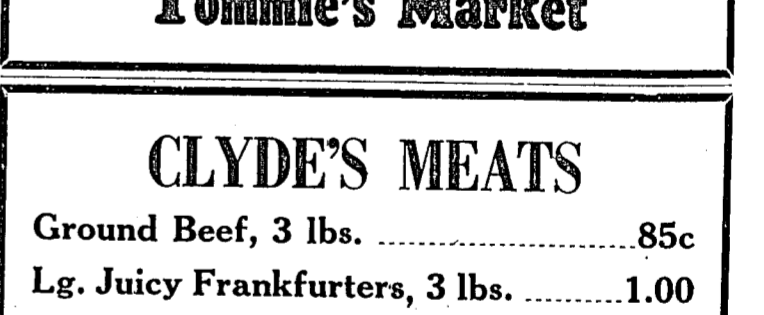
Beside the Chrisman-Willis Sweet game Monday, four contests are scheduled to play off ties; and Phi Tau and ATO begin the cross-league playoffs. All six games were rained out yesterday.

After three days' play in intramural tennis 20 contests have been completed. Rain forced the postponement of all of yesterday's matches until Monday.

Last year's champion Ed Russ, DTD downed Dick Hood, SC in their first round match, and Knute Westergren, BTP, a semifinalist last year, won his initial contest.

### LITTLE MAN ON CAMPUS

by Dick Bibler



"Your term paper is sloppy, bad spelling, no organization, poor topic—but I'll accept it. I want to finish grading these papers so tell mother I may be a little late for supper."

Prof: "Did you take a shower?" Freshman: "No, is there one missing?"

### Groceries - Candy - Cigarettes

We are Closing for All of The Home Games!  
OPEN UNTIL 9 P.M. EVERY NIGHT  
**Tommie's Market**

### CLYDE'S MEATS

Ground Beef, 3 lbs.	85c
Lg. Juicy Frankfurters, 3 lbs.	1.00
Shaulder Pork Roast, lb.	37c
Center Cut Pork Chops, lb.	55c

in a hurry? use our **RUSH CLEANING SERVICE** SPIC 'N SPAN CLEANERS

**STEWART'S SHOE REPAIR**  
519 S. Main  
You'll be delighted with the new life, and new looks, we can give your worn shoes.  
COMFORT—AT REASONABLE COST!

Illustrations Lettering  
**SIGNS**  
Call Fran Lambert, 28695

## Pre Da

Stow the passing sex who as

The GOLD

Break out t er trays, the Palouse!

University prised last Su a white cove spread itself campus lawn.

The Univer measured the s but Monday r greeted by m "white."

Yesterday tures cooled skies dumped the area. Bef ner snow bal witnessed als and "snc horseplay.

Alas! Winter ers get a bre today while s ers will have t lars and settl winter.

Jason hopes readers have b class election Argonaut's ide interest in the scene this year but the Arg ca

There are a regularly enrol University this highest enrollr had to date, bu only about 150 will get out and coming election Why?

The only re arrive at is indifferent to v lazy to waddle polls or just not in whether th competent tea

In the case usually are the cries of c misrepresentative heard. Had they place, some of t have been elimi

The voting p tively a campus politicians have on a national s that here in a stitution, voting chore rather handed down th pages of history Jason predict half of the stude to get out and v I dare you to

### Taylor T Undersea

The student br of the Universi present Robert I 104 Engineering day, November 1 dents and facul come.

Taylor's talk Aspects of Tran phony." He will submarine cable been laid across which will make undersea teleph The A. T. and T partment plans cables from Por chikan and from Hawaii in the

Taylor was a staff which desig deep water repea ed at Yale Univ Mechanical Eng member of Sign Beta Pi honor s

### NOT

The ASUI Exe interview interes positions on the Council at 7 p.m. Executive Board floor of the Studen