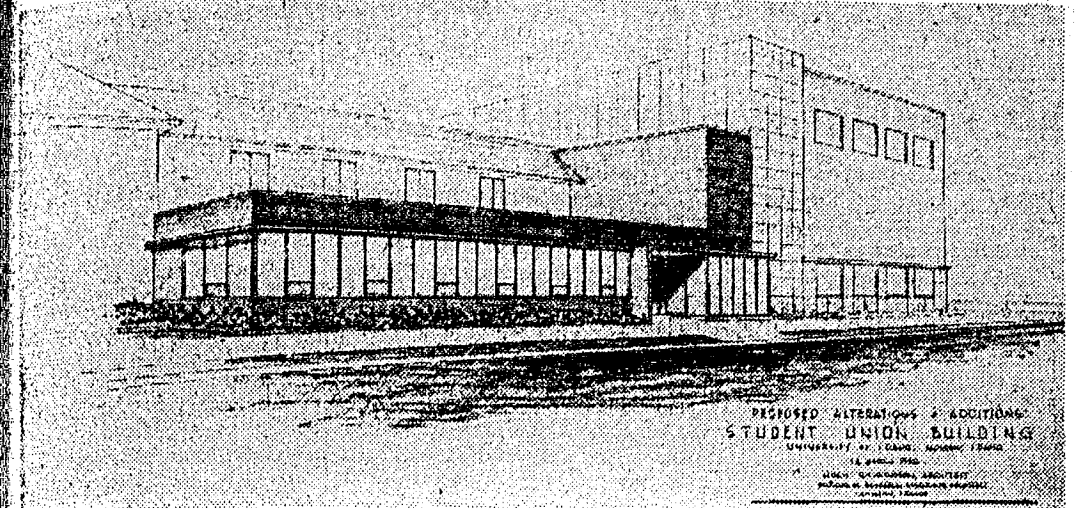






### The New SUB Look



The Board of Regents have approved an addition to the present Student Union Building to close in the present patio with glass. This is the architect plans for the addition.

### Here's More About— Dick Weeks

personal interview system for the selection of ASUI committees.

- To perfect these ideas implemented by the SG Party by using the rating system for people working on committees.
- Usage of the index activities cards.
- To advise all students of all ASUI, house, and University functions by having the publicity committee prepare a monthly calendar of activities to be published in the Argonaut.

2. To have the ASUI Executive Board obtain all available data and information on possible recreational activities for which the Students Facilities Fee might be used and to present this information to the house presidents' meeting and receive back from them the students' preference in regard to these activities. Upon receipt of this information to compile a list of priorities on the basis of student preference and work to have these activities built in accordance with the students' wishes.

3. To have a student-faculty board appointed to determine and establish policies for the bookstore (similar to the SUB board) and to

obtain a percentage of the gross annual profit from the bookstore for the ASUI instead of yearly rent and to obtain overall student control of the bookstore.

- To establish a liaison committee between the students and the City of Moscow through the City Council and the Chamber of Commerce. The committee to be composed of the vice president of the ASUI and one member of the Executive Board who will attend meetings of the City Council and Chamber of Commerce and help the City of Moscow through student support whenever possible and in turn to secure the students' desires that pertain to the City of Moscow.
- To establish a ASUI job-placement committee which will obtain and channel information on all available jobs in the city of Moscow, and the state of Idaho, and the surrounding vicinity for summer and part-time work so that students who desire to work either in the summer or during the school year could come to this committee and receive information on job possibilities.

Other candidates in the political field were:

- Student Government**
- Nancy Benfer
  - Harriette Hanna
  - Gary Wescott
  - Jim Harris
  - Lauren Hicks
- Independent Party**
- Dayle Carlson
  - Larry Wing
  - Pat Albano
  - Mary Verburg
  - Ron Ehlers
  - Mary Lin Meek
  - Dick Klingensmith
- United Party**
- Neal Powell
  - Dan Davis
  - Mel Schmidt
  - Nancy Buchanan
  - John Chapman
  - Eivind Resa
- Campus Coalition Party**
- Dick Moore
  - Mike McQuade
  - Mickey Hammer
  - Don Donaldson

light on the situation is that Jim Koehner and Frank Nosek both were in a meeting with Jamie Steele, Gem Editor, whom they were trying to feel out at the time. I just happened to drop in to the Gem office to have a word with Steele when I interrupted the meeting. At that time, Steele and myself both became aware that these two men were fishing for some sort of "deal" to put Carlisle in office.

One more conversation ensued between John Chapman and myself, but no addition light was shed on the situation by his statements. He only swore to God that he presented the facts as he had obtained them from the national headquarters of IK.

In looking back over the whole situation, Newman told me he felt that he had played the role of "fall guy." He added, "I think that I was sucked in."

Late yesterday afternoon sincere apologies were exchanged between Dick Weeks, Dewey Newman, and myself as a result of Wednesday night's smoker.

These are my observations and the information that gleaned from the whole affair. You, the reader, can judge for yourself.

### Prexy Candidates Congratulate Weeks

United Party candidate Dale Carlisle yesterday afternoon expressed his gratitude to supporters and for the chance to run for president's office.

"I am writing this chiefly as a thank you to the many students of the University who have honored me in letting me run for the position of Student Body President of the University. This is also a special thanks to the many who have let me speak to them in their living groups and individual apartments and have given me some of their time.

"A few special people deserve honorable mention, so to speak, so to all of Greek Caucus, Pat Berry, Frank Nosek, Claudette Kerns, Chris Anderson and all the members and pledges of Phi Gamma Delta who gave much of their time to me with a possibility of something or nothing in return I give what small return I can in openly thanking all of them for making my campaign possible.

"I have reserved the best for the last in saying that my only return to all the people who backed me with their vote—whether I win or lose or draw, as I do not know at this writing—is my pledge to do all within my power for the University of Idaho this coming year and the statement that everything I have learned during the campaign will be used to the advantage of all."

Last night Carlisle added, "After discovering Dick had won I want to congratulate him publicly as I already have done so privately and want to thank Dick, Ray and John for a fine campaign and the top experience of my life."

Ray Wilkie, Campus Coalition candidate said, "I have no regrets as to the outcome of this election. I consider it a great honor to compete with those of the top men on campus for position of ASUI President. By the outcome of the voting I feel that my belief in cross-campus politics on this campus is

### Here's More About— Golden Fleece

and his bearer out of the office. I next asked Nosek when he first knew of this report. He told me that he found out about it just after Emerine was in the office and that he had contacted Chapman and asked him to drop it. He said that he obtained the report from Chapman and his word not to say anything in the Monday night smoker at Willis Sweet. He next related that Chapman had another copy of the report that he slipped to Dewey Newman at the smoker with instructions to "blast em." He said that this was unknown to himself. Nosek then told me that the next he knew Newman, was spilling the whole thing.

When asked what he did prior to the Wednesday night smoker to head off a recurrence of a like situation, Nosek replied that he again contacted both Newman

and Chapman and got statements from them that they wouldn't bring anything up about it. He said that he didn't know anything about the photostatic copies or other "proof" produced at the meeting. "What else could I do," he added.

Jason might add that Dale Carlisle did try to break the thing up at the smoker.

Next I will relate Dewey Newman's side of the story. He told me that the first he knew of the mess was at the Monday night Willis Sweet smoker when Chapman, Koehner, and Nosek approached him in a group, shoved the report in his hands and told him what to do. He said, "At the time I thought the whole thing was just a joke."

"Chapman said the cue to the attack would be when Nosek gets up and asks the candidates for their qualifications," Newman said. He added that Chapman told him that the report was true.

Concerning the Wednesday

night smoker Newman told me that Nosek and Chapman both planned the whole affair. He said that Chapman had arranged the telegram set-up and Nosek was in on it. Newman stated that he didn't know anything about the telegrams and other information until just before the smoker when they told him about it. He said, "I still thought that they were telling the truth."

As the readers can see, there are some inconsistencies. But here are more facts that Jason observed.

During the Wednesday night smoker, amid all the hootin' and hollerin', when McDevitt asked the students whether they wanted to hear the whole thing out, Jason unmistakably heard Nosek holler at the top of his voice, "If it's about Weeks, let's hear it."

Another fact that may shed

### Rodeo Club Queen Finalists



The University of Idaho rodeo club recently named finalists for the Queen of the University of Idaho sponsored rodeo to be held May 4 and 5 at Pomeroy. The finalists are Diane Olmstead, Gamma Phi; June Sleeman, Kappa; Kay LaBarge, Theta; Betty Jo Roberts, Theta and Gail Stellmon, Alpha Chi.

### Foresters To Pick Outstanding Man At Sat. Banquet

Xi Sigma Pi, national Forestry honorarium, will name and award the outstanding Forestry student for the year. The award will be made Saturday night at the annual Forester's banquet, which will be held in the central ballroom at 6:30. This banquet climaxes Forestry Week.

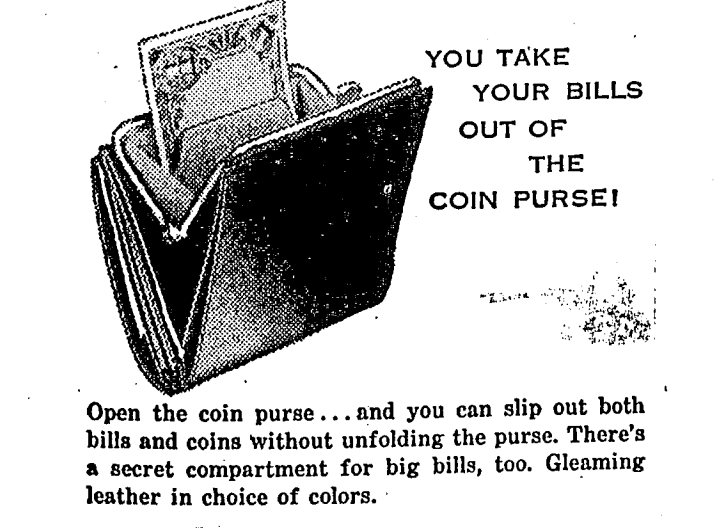
The outstanding forester is selected by a committee composed of both students and faculty of the University College of Forestry. Selection is based on the students' over-all grade point, leadership ability, the contribution the student has made to the College of Forestry, and how well the student is expected to do in the field after graduation, extra curricular activities the student has participated in are also considered in making the selection.

The faculty has challenged the students of the College of Forestry to a softball game, which is held annually in connection with Forestry Week. The time and place of this ball game will be designated at a later date.

Adulterated—inebriated adult.  
Altruistic—an altogether too true story.  
Charlatan—an old-fashioned dance of the early 20s.  
IT PAYS TO ADVERTISE.

**STEWART'S SHOE REPAIR**  
509 1/2 S. Main  
You'll be delighted with the new life, and new looks, we can give your worn shoes.  
COMFORT—AT REASONABLE COST!

### IN OUR NEW BUXTON FRENCH PURSE



YOU TAKE YOUR BILLS OUT OF THE COIN PURSE!

**The GEM SHOP**

— SENIORS —

We Are Offering A **Special Financing Plan**

Which Enables You To **BUY A 1956 BUICK NOW!**

First Payment in July  
MONTHLY PAYMENTS LOW

**Fahrenwald Buick Co.**

**DAVIDS'**

**E.O.M. SALES**

Starts This Morning, Friday;  
Continues Saturday and Monday!

Savings from 20% to 60% on new Spring merchandise. Hundreds of items in every department of this big store. All charges will be placed on May accounts payable June 10th.

**COME AND SAVE!**

When you come to **Varsity CAFE**

Try Our Delicious **FISH Dinners.**  
You KNOW the food's good.

For a bedtime snack, have cookies from **Willis Grocery**

### What young people are doing at General Electric

**Young chemical engineer works on new ways to make silicones**

Silicones are a new class of man-made chemicals with very unusual properties. Made from sand, they assume the form of rubber, grease, oil and resin. Under extremes of heat and cold, the rubber stays rubbery, the oil oily. Silicones added to fabrics make them exceptionally water-repellent. Silicone makes waxes spread easier... paints almost impervious to weather.

One of the men responsible for finding new ways to produce silicone products is 26-year-old Frank V. Summers.

**Summers' Work Interesting, Important**

As process engineer of the Silicone Products Department, Frank Summers first compares the results of small-scale, pilot-plant experiments with the production methods in actual use. Then, using his own knowledge of chemical-engineering principles, he designs faster, more efficient and more economical methods of producing silicone products. Frank Summers' excellent training, diversified experience and outstanding personal qualifications, make him a valuable contributor to this engineering team.

**25,000 College Graduates at General Electric**

When Frank Summers came to General Electric in 1949, he already knew the kind of work he wanted to do. Like each of our 25,000 college-graduate employees, he was given his chance to grow and realize his full potential. For General Electric has long believed this: Whenever fresh young minds are given the freedom to make progress, everybody benefits—the individual, the company, and the country.

Educational Relations, General Electric Company, Schenectady 5, New York

Progress Is Our Most Important Product

**GENERAL ELECTRIC**

FRANK V. SUMMERS joined G.E. in 1949 after receiving a B.S. in Chemical Engineering at Iowa State University the same year. He also graduated from G.E.'s Process Technology program and other specialized courses.

# Multiple Use Of Land Resources Studied

### The Correlation of Silvicultural Practices with Wildlife Production.

Anyone interested in the various fields of land management has undoubtedly been exposed to the concept of the "Multiple use of lands." This concept teaches that the land can be put to several uses instead of just one.

For example a forested area might be important for timber production, wildlife production and for its watershed. The multiple-use concept decrees that these three interests can all be integrated into one management plan, even though one may be more important than the others. There has been considerable work done to illustrate the soundness of the multiple-use concept. The purpose of this paper is to illustrate how some silvicultural practices can be integrated into sound wildlife management practices and the development of wildlife habitats.

Economics dictate that in a forest containing valuable timber species, wildlife production will be secondary. However, there are certain areas where wildlife production will take precedence over timber production. The silvicultural practices can be started toward either timber production or wildlife production. But neither need be completely overlooked in favor of the other.

### Sunlight Enters

In general any cutting is somewhat beneficial to wildlife. Cuttings increase openings allowing sunlight to enter and stimulate the shrubs and low growing plants necessary for a suitable wildlife habitat. Of course the land manager should try to coordinate the silvicultural practices on the land with the habitat requirements of the wildlife present. The land manager, then, needs to be familiar with the habitat requirements of the species present.

The cutting system generally practiced in north Idaho on the white pine type in the cedar-hemlock zone is the block clear-cutting system. The block clear-cutting system is especially practicable in this type because it assures adequate reproduction and makes logging economically feasible. This type of cutting system is a very good example of the compatibility of good forest management with good wildlife management.

The two most important wildlife species present in the white pine type of north Idaho are the ruffed grouse and the whitetail deer. The

openings created by block clear-cutting are ideally suited for drumming and nesting grounds for the ruffed grouse. These cuttings also serve as habitat for many insects which are a necessary constituent in the diet of young grouse.

Because of the succession which follows logging in north Idaho, browse production is at a peak 10 to 15 years after cutting. From a standpoint of food production for whitetail deer, cuttings should be made at a 10-to-15 year interval. Of course if cuttings are made at shorter intervals, the benefit to wildlife will be greater. Cuttings made at this interval will provide a continuous maximum amount of browse.

### Clear-cut Blocks

When the size of the clear-cut blocks comes into consideration, some difficulty is encountered, but not because of any incompatibility between wildlife and forest management. The difficulty is with economics. The blocks should be small and widely distributed. Blocks one to three acres in size would provide a maximum of benefits to wildlife. However, blocks of this size would be impracticable and blocks of about 40 acres in size will suffice. Small, widely distributed blocks insure adequate reproduction of the valuable timber species present and wider distribution of the wildlife present. Small blocks have more edge.

Edge is valuable from a wildlife standpoint because it means a more diversified habitat. Often the physiography of the land makes it economically impossible to have small blocks widely distributed because of the cost of building logging roads. The best the land manager can do is to make the blocks as small and as widely distributed as possible.

Closely related to the cutting system used on the timber of an area is the stabilization of the logging roads after cutting. Stabilization of the logging roads in the area is especially important where block clear-cutting is used because the roads will have to be used again. Stabilization of logging roads is also very important for good watershed management. The stabilization of logging roads can be accomplished by seeding with some perennial herb.

In order to enhance the multiple-use concept, the seeding should be made with some species which can be used as food for some wildlife species present. In north

Idaho, seedings of white Dutch clover and Kentucky blue grass serve as excellent food for ruffed grouse. These two species also serve as excellent stabilizers to prevent erosion on the logging roads.

### Thinning

Thinnings were defined in 1950 by the Committee on Terminology of the Society of American Foresters as "cuttings made in an immature stand to increase its rate of growth, to foster quality growth, to improve composition, to promote sanitation, to aid in litter decomposition, and to obtain greater total yield and so recover and use material that would be lost otherwise." At first thinnings were made with only the idea of reducing competition and thus increasing the total production of the stand. Research carried out by Paul (1930), however, illustrates the fact that thinnings have a favorable influence on the character of the wood. Thinnings have a profound influence on the wildlife present in a forest. In a study carried out in Pennsylvania, Sedam and Morton (1938) found that whitetail deer utilized almost every area that they had thinned by feeding on the slash. Of course not all slash is palatable to wildlife.

However, the most important influence thinnings have on wildlife is that of reducing the competition of the trees with the shrubby and low-growing species which serve as food and cover for various wildlife species. Thinnings serve the same purpose as block clear-cuttings in producing habitat for insects necessary in the diet of many game birds. Thinnings are valuable to wildlife in that they favor seed producing species which are used for food particularly for game birds.

Another value derived from thinnings which helps defray the cost of the thinnings is that of using the immature trees cut for pulp in the pulp and paper industry. This is a young industry which is increasing in importance in the Northwest.

### Winter Food

Slash is important as a winter food in areas where winter logging is practiced. Winter logging operations are especially important where there is a shortage of winter browse and the slash can serve as emergency food. Of course the slash should be of a type that is relatively palatable to the deer. Data collected on the Argonne Experimental Forest in Wisconsin

(1954) substantiates this fact. On a partial-cut area in a white cedar swamp, 330 deer were counted in a week's time crossing a logging road. In contrast, on an area which had been clear-cut two years previous, no deer were seen crossing the road in the same period of time.

Silvicultural practices can even be turned toward negative practices in connection with wildlife production. Hunters and sportsmen sometimes cause considerable damage to private and public property. Livestock is sometimes molested, equipment damaged, and fires started by campers and hunters. Let us suppose for the moment that the land owner desired to eliminate hunters from trespassing onto his land to minimize the damage and molestation resulting from the trespass. The owner could, through modified silviculture, render his land unsuitable for wildlife habitat. By using a cutting system which eliminates openings and favors unpalatable shrubby species, the owner could greatly reduce the number of wildlife present. With such a paucity of game the land owner has essentially eliminated his problem.

The land manager has a powerful tool in his control in the silvicultural methods which he chooses. The greatest use of silvicultural practices is in a positive way; it is to increase and improve the natural products of the land whether they be timber, wildlife, or water. In the past many land managers have completely overlooked the use of silvicultural practices to develop wildlife habitat. Since the forest is the home of many of our most valuable species, the silviculture practiced on the forest land has great influence on the wildlife. Private owners argue that they receive no direct benefit from the wildlife present on their land and therefore are unable to make special considerations for wildlife. But on the public-owned lands there is no excuse for lack of proper silviculture to insure maximum numbers of wildlife. Most of the silvicultural practices cited here cost nothing extra to be beneficial to wildlife; these practices are good forest management methods in themselves. In the future land managers should practice the silviculture which will help increase the forest products on a sustained-yield basis and which will enhance the multiple-use concept.

## Idaho Hosts Eng. Conclaves

An annual meeting of the Pacific Northwest Section of the Student Chapters of the American Institute of Chemical Engineers was held last week on the Idaho campus.

The two-day meeting featured a panel by men of industry and education on "What a Chemical Engineer Does" and a speech on "Chemical Engineering in Atomic Energy."

The A.I.Ch.E. gave awards for the top three presentations of research projects by selected senior chemical engineering students from each school. Francis Keller of Seattle University was judged the winner for his presentation of "Development of New Thermodynamic Charts for Computing High Pressure Gas Deviations."

The University of Washington walked off with both second place

## Public Invited To Air ROTC Annual Review

The Air Force ROTC detachment will hold its annual federal inspection and review Tuesday afternoon at Neale Stadium at 1:45 p.m. Lt. Colonel James H. Hughes, professor of air science at the University, invites the public to the review.

The inspectors are from Headquarters AFROTC, Maxwell AFB, Alabama. Colonel Shaylor will be the acting inspector general. Assisting Shaylor will be Lt. Colonel Lauler and Major McAllister. Many cadets will receive awards or citations during the review. The highest award, Air Force Association Award, will be presented to Robert P. Speedy.

Ricker H. Jones, will receive the Air Science IV (service) Medal.

Other awards and citations include: Armed Forces, Communications and Electronics Award, George F. Eldam; American Legion Dudley Loomis Post Insignia Award, Hans G. Gotsch; Convar Award, Donald L. Duncan; and National Defense Transportation Association Citation, James F. Hanzel.

AFROTC Medal Awards will be presented to: Richard L. Fuechsel, AS I; Ernest J. Davenport, AS II; Bruce F. Buckman, AS III; and William J. Griffin, AS IV (achievement).

The Air Force Rifleman Award will be presented to Michael M. Foster. Foster will also receive the Deans Award—High Score AFROTC Rifle Award.

Peter C. Preston will receive the Air Force Drill Team Award.

## Nan Soden Gets Grad Fellowship

Nan Soden, senior in music at University of Idaho, has been granted a \$1,200 graduate fellowship for advanced studies at the University of Illinois' school of music, it was announced today by Professor Hall Macklin, head of Idaho's music department.

Sixty-five students from universities and colleges throughout the nation competed for five fellowships in music at the Illinois institution. Miss Soden was selected for one of the grants for her outstanding ability as a pianist and for her high scholastic standing.

An organist as well as pianist, Miss Soden has also served as member of the string section of the University of Idaho Symphony orchestra, and was a member of the chamber orchestra which toured the State with the Vandenberg choral group. An honor student, she was recently elected to Phi Beta Kappa, national scholastic fraternity.

## Insufflation—becoming confused to what time to come in.

Insufflation—becoming confused to what time to come in.

Insufflation—becoming confused to what time to come in.

Insufflation—becoming confused to what time to come in.

Insufflation—becoming confused to what time to come in.

Insufflation—becoming confused to what time to come in.

Insufflation—becoming confused to what time to come in.

### LITTLE MAN ON CAMPUS by Dick Bibler



"BETTER JUST SMILE AND SAY 'HELLO.'"

### Kenworthy

TONIGHT — SATURDAY  
"Come Next Spring"

SUN.—MON.—TUES.—WED.

Helen of Troy

NUART

TONIGHT — SATURDAY  
"JUBAL"

SUN. — MON. — TUES.

ON THE THRESHOLD OF SPACE

Art's Campus Barber Shop  
THREE BARBERS  
"It Pays To Look Well"

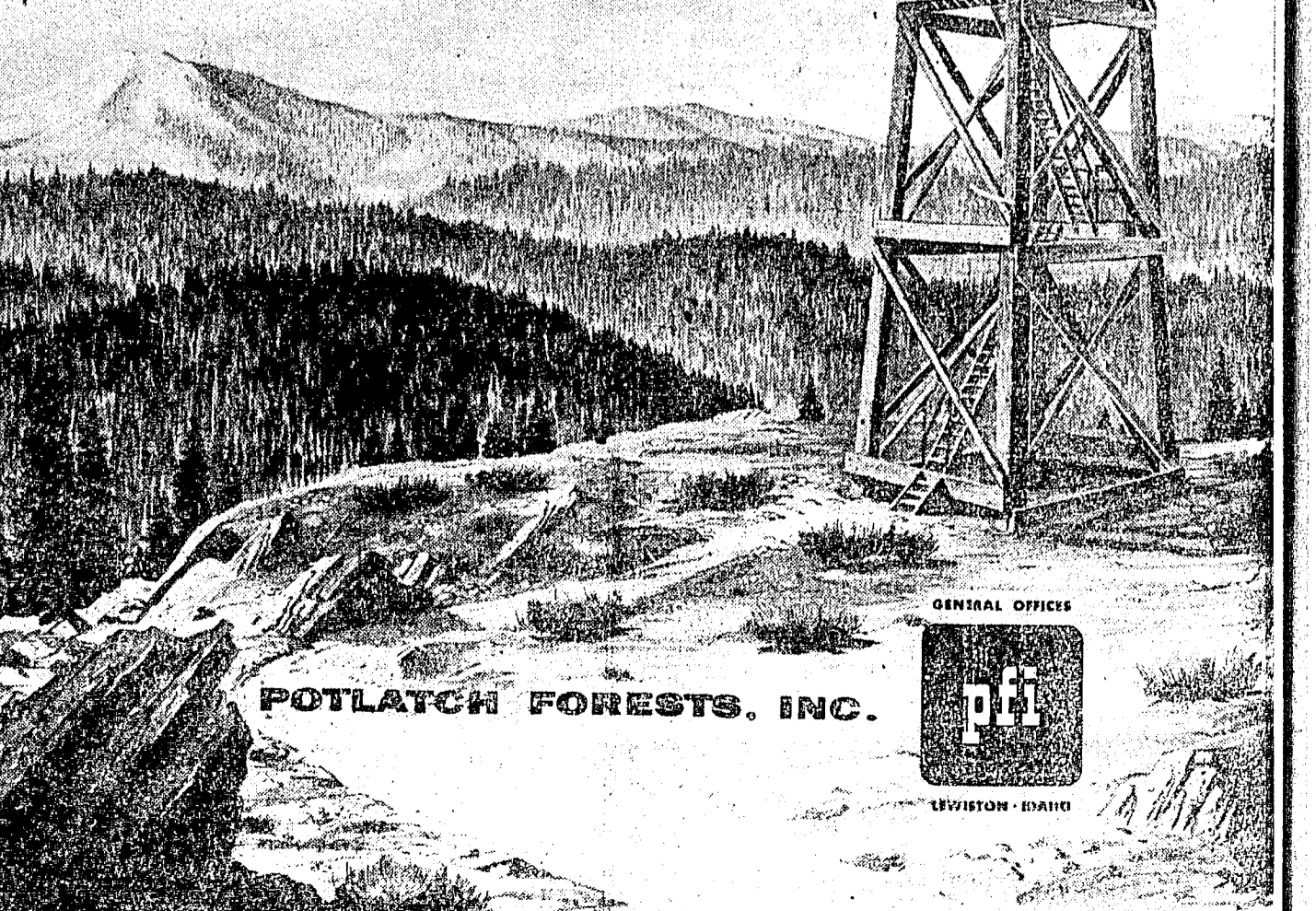
All the pleasure comes thru...  
**THE TASTE IS GREAT!**



THE BEST IN FILTERED SMOKING  
**FILTER TIP TAREYTON**  
PRODUCT OF The American Tobacco Company AMERICA'S LEADING MANUFACTURER OF CIGARETTES

## 50 Years of Forest Management

One-half century has passed since the pioneers of Potlatch started logging the forests of North Idaho. Fifty years of progress and change have produced sound forestland management practices for the perpetuation of our forestlands and our economy. Selective logging—cutting only those trees that are ready for harvest; protecting them from insects, disease and fire; maintaining the forests for the continued protection of wildlife and as a permanent recreational area for hunters, fishermen and campers—are but a few of the problems confronting our foresters. Because of the recognition of these and other vitally important factors, in another fifty years our successors will be able to say—"100 years of FOREST MANAGEMENT has made possible the continued harvesting and public use of our forestlands."



POTLATCH FORESTS, INC.  
GENERAL OFFICES  
LEWISTON - IDAHO

# KKG 'Bird Land' Formal Tonight

"Lullaby of Bird Land" is the Kappa spring formal theme tonight at the chapter house. Hays and French and the SAEs will hold firesides over the weekend. The Alpha Chis entertained many sweethearts at a banquet Sunday. Phi Deltas are journeying to Lewis for their annual picnic at the orphanage tomorrow.

## HAYS HALL

Hays and French gals are having a joint date-fireside Saturday night at Hays. Several chemical engineering gals were guests at the dorm during the chemical engineering convention.

## BETA THETA PI

Congratulations to Frank Cammack who was initiated into Beta Theta Pi last Saturday in Spokane. The initiation was part of a Spokane alumni reunion to be an annual affair in following years.

## ALPHA PHI

Late Tuesday night Sharon Helander announced her pinning to Bill Bonnett, Phi Delt. Joy Chilcott announced her engagement to Jack Boswell at a Sunday dinner.

## KAPPA KAPPA GAMMA

It is spring formal time at the KKG House and "Lullaby of Bird Land" is the theme for the dance Friday night.

## GAMMA PHI BETA

Dinner guest Wednesday night was Mrs. Lloyd Byrne from Buhl, Idaho. Congratulations to Bev Bowers and Jim Shawver on their engagement.

## ALPHA CHI OMEGA

An Alpha Chi Omega "State Day" was held at Whitman College last Saturday with many of the girls from Alpha Rho present.

## TAU KAPPA EPSILON

Congratulations to Bob Prestel who pinned Jamie Smith, Pi Phi. Bill Friede and Al Waltz were appointed rush chairmen.

## SIGMA ALPHA EPSILON

The Minerva Club meets Thursday night at the house. SAE pledge class will present a fireside Sunday night.

## FRENCH HOUSE

Newly appointed executive board members are Marge Jones, culture chairman; Charlene Wells, scholarship chairman and LaDaun Olin, treasurer.

## PHI DELTA THETA

Phi Delt hashers had a good time serving the girls of the house Theta breakfast in bed Sunday morning.

## DELTA GAMMA

Congratulations to Nancy Backstrom who was named DG of the month for hard work on the initiation banquet.

## SIG NUS PLAN SERVICE DAY

Sigma Nu fraternity will spruce up Moscow's Opportunity School as its annual service to a Moscow project, co-chairmen Tom Requist and Bill Winter said today.

## NEW SPUR TREATED

A record number of freshman girls who are eligible for being tapped into the Spur honorary for the coming year were entertained at the annual Spur tea last Sunday afternoon at the home economics building.

## IMPECCABLE—NOT STANDING FOR A BRIEF KISS.

Impeccable—not standing for a brief kiss. Request said others heading the project include: Jim Rees, fraternity president; Eivind Resa and Skip Carbon.

## Four Couples Reveal Spring Engagements

### STURGESS-BIRD

Virginia Sturgess announced her engagement to Jack Bird April 18 at the Tri Delta house with the theme "The Moon Has Turned To Gold."

### HANSON-LEACH

Donna Hanson revealed her engagement to Ted Leach, Campus Club, at dinner Wednesday night at Steel House.

### PRICE-EGGLESTON

Sunday dinner at Steel House disclosed the engagement of Phyllis Price to Jim Eggleston.

### BOWERS-SHAWVER

Dinner Sunday at the Gamma Phi house brought the announcement of the engagement of Beverly Bowers to Jim Shawver, Sigma Nu.

### INTER-VARSITY CHRISTIAN FELLOWSHIP

Meet at the CCC at 7:30 p.m. tonight for a discussion led by Dr. Lorell Weiss on "How Great is Our God."

### CANTERBURY CLUB

Dinner will be served at Canterbury at 6 p.m. followed by a business meeting.

### LUTHERAN STUDENT ASSOCIATION

Coffee hour at 4 this afternoon. At Sunday evening program from 5 to 7, a talk on mixed marriage will be given.

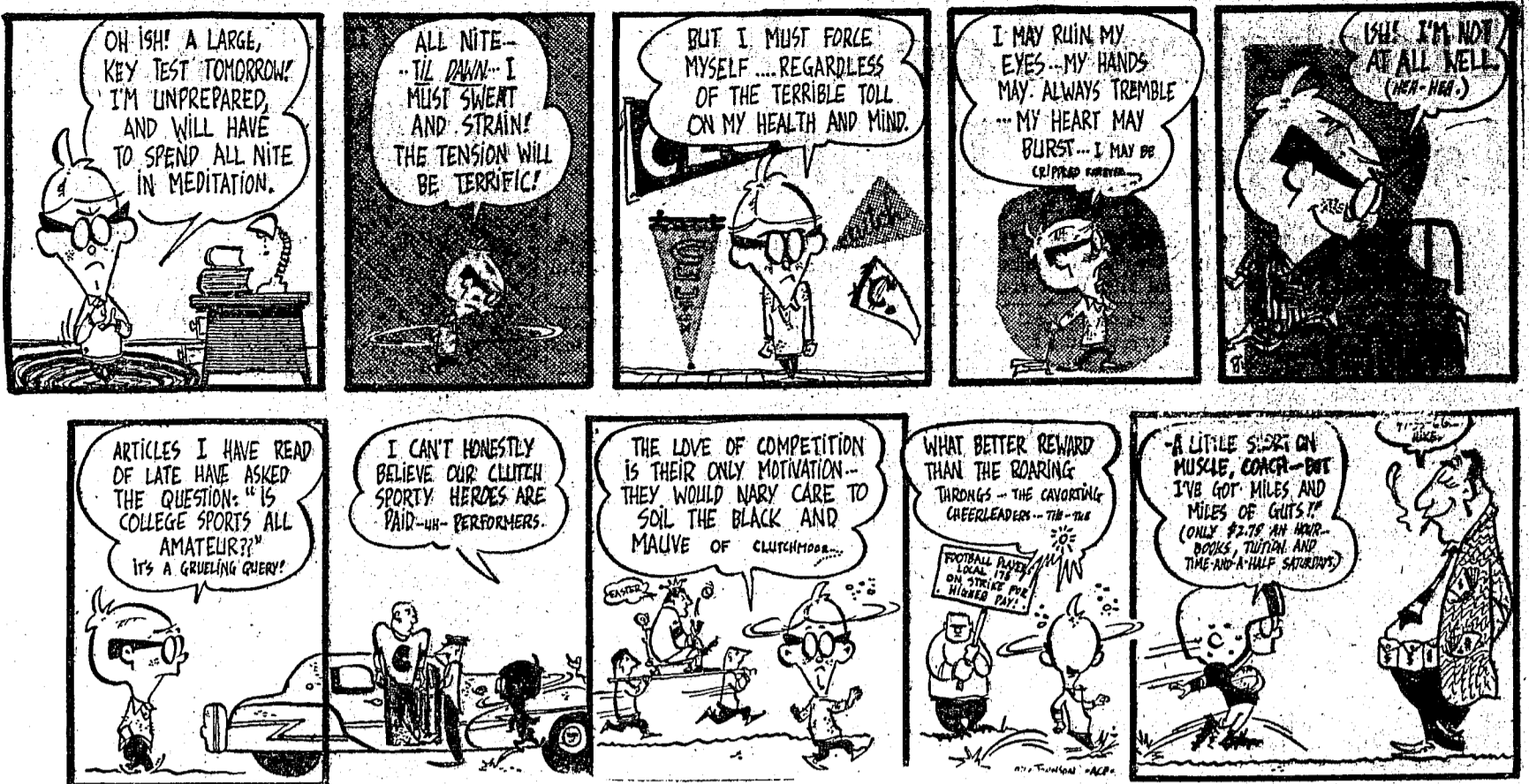
### NEWMAN CLUB

The club will receive Communion in a group at the 9:30 Mass Sunday night a dinner will be held in honor of Mr. and Mrs. Hatrup and the high school seniors from surrounding communities.

### COUNCIL CHOOSES O'CONNELL PREXY

Jerry O'Connell, Sigma Nu, has been elected president of the Social Coordination committee, a group composed of all campus living group social chairmen.

Other new officers include Jerry Dallas, Lambda Chi Alpha, vice president; Beverly Burwell, Gamma Phi Beta, secretary; Pat Berry, Alpha Phi, treasurer.



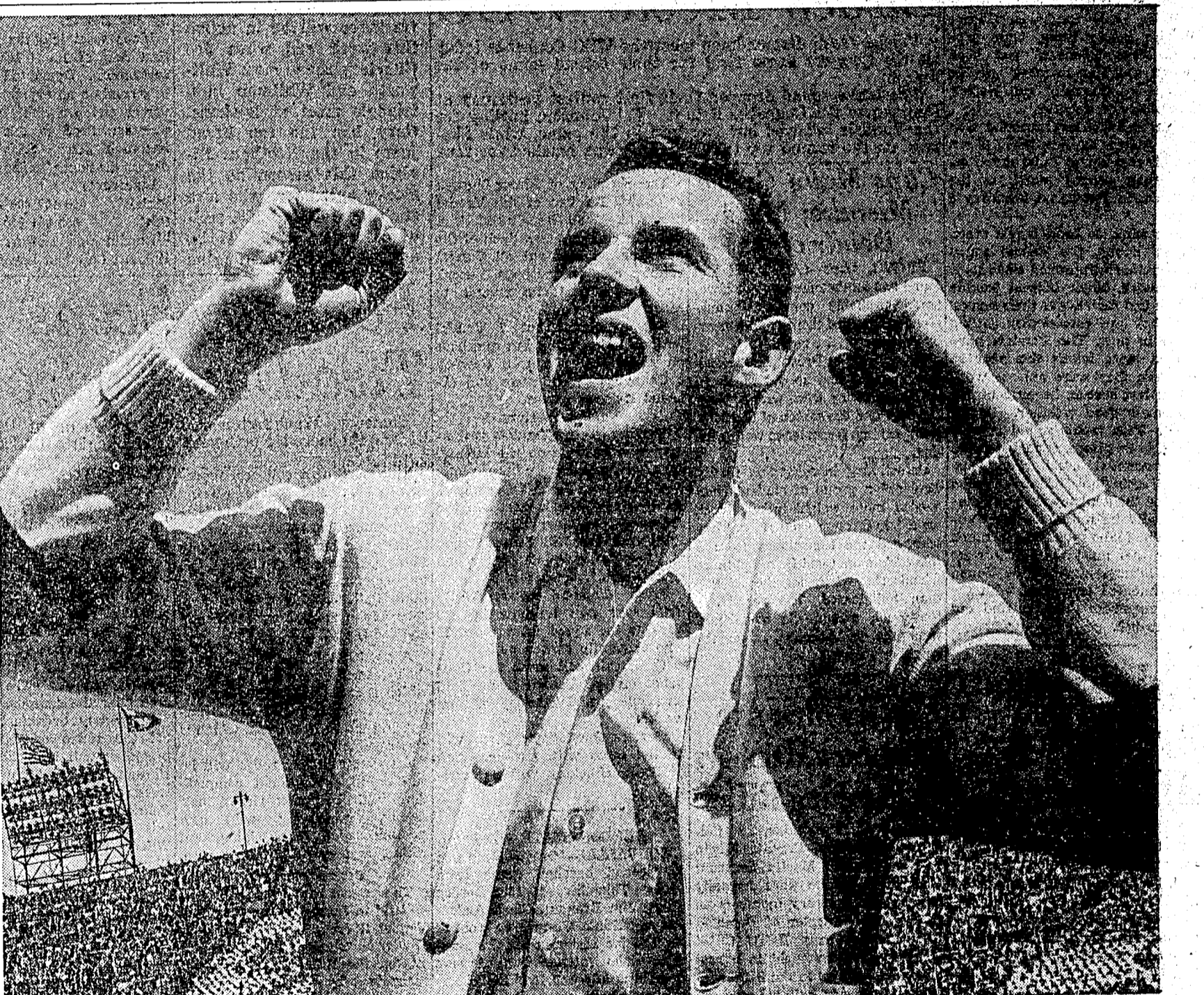
## Masks In Order For Jr.-Sr. Prom

Wearing of masks will be part of the costume at the annual semi-formal Junior-Senior Ball in the Memorial gym.

## SIGMA TAU INITIATES FOURTEEN TOMORROW

Fourteen students will be initiated into Sigma Tau, national engineering honorary, in ceremonies at the Student Union building Saturday.

## WANT ADS GET RESULTS!



# Allan Green

For all of us, something to cheer about

Assistant cheer leader Allan Green is a sophomore in the College of Letters, Arts, and Sciences of the University of Southern California.

He's also, through foresight, one of the youngest of the 46,175 people who hold shares in Union Oil, the 40th largest industrial company in the country. And his 55 shares entitle him to a report on our 65th year of business.

In 1955 our customers paid us the record amount of \$368,760,900.

\$59,286,200 of this amount, or 16.1%, was paid our 8,839 employees as wages and for benefits to protect them and their families.

A Saturday morning initiation breakfast featured election of Miss Mackert as chapter president and Miss Sasser vice-president. Dorothy Bauer, secretary; Cathy Cannon, treasurer; Joan Fisher, historian and Jan Wilms, junior adviser.

Taxes took 3.6%. This does not include the \$65,875,000 we also collected from customers as fuel taxes for governmental agencies.

We spent 72% with more than fifteen thousand other companies and individuals with whom we do business.

This left 8.3% of the \$368,760,900 as net profit. Slightly more than half of these earnings were paid in cash dividends to Allan Green and our other 46,174 share owners, who also received one additional share of stock for each ten held.

The balance of net earnings, equal to 3.9% of the customers' dollars, we reinvested in the business for necessary expansion and modernization of facilities.

Whether or not you own stock in this or any other company, it seems to us that this report is of vital concern to you.

For so long as companies like Union Oil have the incentive to compete and make a profit, Allan Green and others like him will have the incentive to hold shares in that company.

This is the best possible economic climate for continuing prosperity. Which is, for all of us, something to cheer about.

YOUR COMMENTS ARE INVITED. Write: The President, Union Oil Company, Union Oil Bldg., Los Angeles 17, Cal.

## Union Oil Company OF CALIFORNIA

MANUFACTURERS OF ROYAL TRITON, THE AMAZING PURPLE MOTOR OIL

