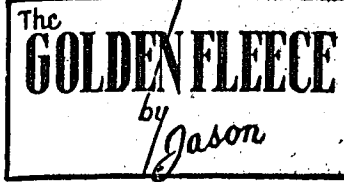


Extensive Slate For RE Week

Religious life will be emphasized on the campus next week as students mark the annual observance of R.E. Week with the theme "In God (?) We Trust," Sunday through Wednesday, Feb. 24 to 27, by attending a convocation, an assembly, panel discussions, seminars, and house "bull sessions."



Hot Dog . . . Another Queen, Another Dance, Another Committee, Another Week, Another Kickoff, 'N Away We Go.

The steady clicking of typewriters and reporters conversing with news sources — this was the scene in the campus newspaper headquarters yesterday afternoon. There wasn't much going on, just the routine of throwing the sheet together.

Then in pops a couple of students with a news story. The conversation went like this:

"We're going to have a dance and want some coverage on it."

"Okay."

"It's going to be March 9."

"Okay."

The reporter was leaning back in his chair balancing on two legs.

"We're going to have a queen."

"That's all we need, another queen!"

"Not another queen!"

"That's all we need, another queen!"

"Another queen, another queen, a-n-o-t-h-e-r q-u-e-e-n, a-n-o-t-h-e-r q-u-e-e-n . . ."

trilled off in the rest of the SUB . . . "Another dance, another committee, something more to do."

Who will finally jump in front of this snowballing business of dances, queens and activities? This is not likely until we pick the most ultimate queen possible and have bestowed on every woman on campus the title of some queen. But then somebody will think up a new word for a queen.

The IKs must submit a queen from the Idaho campus to compete in national IK competition. They propose a "queen of queens."

We propose that to end this whole mess we must finally select — "The queenest queen of all the bloomin' queens imaginable."

The selection of a queen is losing the significance of any prestige which the sponsoring organization usually hopes to create. And along with queen picking, more and more of the events sponsored around this place are also meaning less and less. Throwing a dance, a week, a drive, etc., is getting to the point that it's just something more to do.

The build up to Campus Chest carnival this year suffered when the week was so busy with balls, kickoff dances and the like that the carnival just came and went, then there was something else to do.

The Blue Key talent show, one of the outstanding events in the spring is surrounded by a drama production, and the IK "queen of queens" dance.

The weekend of March 1-2 has two basketball games, an AWS dance and Ski dance scheduled (the dances and one game on Saturday night.)

Then to top this all off, this weekend looks like this:

Friday — Swim meet, basketball game.

Saturday — Engineer's Ball, basketball, swimming.

Sunday — R.E. Week Kickoff. It should be pointed out that with the three-day weekend some students will shoo out of here.

We picked up an editorial the other day that started off, "This is National Engineer's Week. It may seem to be just another week in the year . . ."

You're right!

President D. R. Theophilus commented on the University's observance of the week in a special statement: "Always of keen interest to me is the participation by so many of our students in Religious Emphasis Week. It is recognition by the students themselves that knowledge to be sought goes beyond the techniques for earning a living. The student earnestness exemplified on the University of Idaho campus should be encouraging to people everywhere. My compliments go to all those who work so hard each year to make this week a success."

The activities will begin with an opening convocation Sunday at 7 p.m. in the Ad Auditorium. Special features of the meeting will be an address by Dr. Theophilus, the singing of a Bach cantata by the Vandaleers and a kick-off speech by Dr. Ed Cunningham, main speaker for the week. Coffee hour in the Bucket will follow, enabling the students to meet the guest speakers personally.

Sunday morning services at the local churches will be keyed to campus observance of R.E. Week. Members of the committee and guest speakers will meet at Canterbury house at 3 for a retreat and supper to orient themselves for the week's activities.

Classes will be shortened Monday for the Public Events assembly at 11 at which time Dr. Cunningham will give the main address of the week.

Students will be excused from classes to attend seminars at 3 and 4 Monday, Tuesday and Wednesday afternoons. Panels will be held on Monday and Tuesday evenings at 8 and Wednesday afternoon at 4. Denominational leaders visiting the campus will appear in classrooms as guest lecturers during the week. Living group "bull sessions" will be held Monday and Tuesday evenings after dinner and at 9:30.

Guest speakers who will lead the living group "Bull sessions," seminars and participate in panel discussions are Dr. Cunningham, director of church extension for the Washington Congregational Christian Conference; The Rev. Robert W. Lutness, Chaplain of Pacific Lutheran College, Parkland, Washington; Dr. Calvin Sutherland, minister, Methodist Church, Ephrata, Washington; the Rev. J. Stanley Barlow, Presbyterian University Pastor, University of Oregon, Eugene, Ore.

Dr. Henry Isakson, student counselor, Brigham Young University, Provo, Utah; the Rev. John Weisen-goff, Roman Catholic, on special assignment of Bishop D. G. Hunt, Salt Lake City, Utah; Rabbi William A. Sanderson, Temple Emanu-El, Spokane, Washington, and the Right Rev. Russel S. Hubbard, Episcopal, Bishop of the District of Spokane.

Smyle's Statement
Gov. Robert E. Smyle stated (Continued on Page 2, Col 1)

At its meeting last week the Board accepted four evaluation and proposal reports and have called on activity leaders on the campus during the week to supplement this information.

The President is expected to submit recommendations regarding the cutting down of many activities which grow from the ASUI for the Board's study.

The four proposals submitted last week come from the Associ-

ated Women Student executive board, the campus National Student Association committee, Mrs. Carilyn Staley, one of the Board coordinators in the evaluation, and from Fred Burrow, ASUI veep, and Idaho Argonaut.

ed Women Student executive board, the campus National Student Association committee, Mrs. Carilyn Staley, one of the Board coordinators in the evaluation, and from Fred Burrow, ASUI veep, and Idaho Argonaut.

ed Women Student executive board, the campus National Student Association committee, Mrs. Carilyn Staley, one of the Board coordinators in the evaluation, and from Fred Burrow, ASUI veep, and Idaho Argonaut.

ed Women Student executive board, the campus National Student Association committee, Mrs. Carilyn Staley, one of the Board coordinators in the evaluation, and from Fred Burrow, ASUI veep, and Idaho Argonaut.

ed Women Student executive board, the campus National Student Association committee, Mrs. Carilyn Staley, one of the Board coordinators in the evaluation, and from Fred Burrow, ASUI veep, and Idaho Argonaut.

ed Women Student executive board, the campus National Student Association committee, Mrs. Carilyn Staley, one of the Board coordinators in the evaluation, and from Fred Burrow, ASUI veep, and Idaho Argonaut.

ed Women Student executive board, the campus National Student Association committee, Mrs. Carilyn Staley, one of the Board coordinators in the evaluation, and from Fred Burrow, ASUI veep, and Idaho Argonaut.

ed Women Student executive board, the campus National Student Association committee, Mrs. Carilyn Staley, one of the Board coordinators in the evaluation, and from Fred Burrow, ASUI veep, and Idaho Argonaut.

ed Women Student executive board, the campus National Student Association committee, Mrs. Carilyn Staley, one of the Board coordinators in the evaluation, and from Fred Burrow, ASUI veep, and Idaho Argonaut.

ed Women Student executive board, the campus National Student Association committee, Mrs. Carilyn Staley, one of the Board coordinators in the evaluation, and from Fred Burrow, ASUI veep, and Idaho Argonaut.

ed Women Student executive board, the campus National Student Association committee, Mrs. Carilyn Staley, one of the Board coordinators in the evaluation, and from Fred Burrow, ASUI veep, and Idaho Argonaut.

ed Women Student executive board, the campus National Student Association committee, Mrs. Carilyn Staley, one of the Board coordinators in the evaluation, and from Fred Burrow, ASUI veep, and Idaho Argonaut.

Jailbreak—Almost



Anita Koskella gets nabbed as she attempts a break for freedom from the almost escape proof jail. Three great big strong deputies restrained her, however.

Engineering Week Climaxed By Engineer's Ball On Feb. 22

Climaxing Engineering Week on the campus will be the annual Engineer's Ball Saturday night in the SUB ballrooms.

The Ball is part of the celebration of the 7th annual National Engineering Week which lasts from Feb. 18 to Feb. 22.

The purpose of the week, sponsored by the National Society of Professional Engineers, is to bring to the attention of the American people the role of the engineer in society, and his vital function in furthering safety, technical progress, and public welfare.

Other than the dance, the only event of the week open to all students will be a showing of a movie entitled "The USA and its Engineering Wonders."

This film, which depicts the development of the U.S. through engineering achievements, will be shown Thursday afternoon at 1 p.m. in Room 104, Engineering Building.

Music for the dance, which will last from 9-12, will be supplied by The Pastels, according to Bill Bailey, general chairman.

Engineering displays will be furnished by the five student branches of the department, depicting the activities of these different fields.

During intermission of the dance three awards will be presented for outstanding work in various engineering fields.

Earl C. Reynolds, president of the Idaho Society of Professional Engineers, will award a plaque to the student chapter with the best display as judged by the advisors of the student branches.

Charles Brockway, chemical engineering major, will be given the Sigma Tau award for being chosen the outstanding freshman engineer during 1955-56. Brockway had a 3.90 grade point for the year.

The award for outstanding work on the "Idaho Engineer," an associated engineers publication, will go to Richard Gott, mining engineering.

Dress for the dance will be semi-formal, with tickets obtainable from members of the Engineers Council or at the door for \$1.50 per couple.

LOWER IS NEW PREXY
Ralph Lower, Willis Sweet, last night was elected new president of Independent Caucus. Bill Booth, Willis Sweet, was elected vice president and Chris Bengston, Hays, was named secretary.

Chairmen Say Leaders Meet One Day Only
Dave Eskelin and Judy Bailey, co-chairmen of Leadership Conference committee, yesterday set March 23 as the date of the Leadership Conference. By scheduling a single all-day session instead of two night sessions as has been done in previous years, the committee hopes to bring more success and unity to the conference, the co-chairmen said.

A tentative program has been set up starting at 10 a.m. and lasting until 3 p.m. with an hour break for lunch.

Highlights of the program will be the topic "Group Dynamics." Under this title, the theory and effectiveness of psychological group discussions will be explained and demonstrated by an expert in this field. The committee hopes to have a psychologist from WSC take charge of the topic, but definite commitments have not yet been made.

Group dynamics, a relatively new way to conduct organizational meetings, is a method that is spreading widely among many American colleges and universities.

One event on the program which should be of special interest to the student body will be a panel discussion on "The Value of Activities," Eskelin said. Moderator of the panel will be Gale Mix, ASUI general manager. Topics to be discussed by Dave Maxey, Sue McMahon, Dick Gaskins, Dick Weeks and Chris Mackert are "Devotion to Living Groups and Activities," "Womens Activities on Campus," "Committees," "Student Government—the party set-up and how it works," "Correlating Activities and Studying," and the main topic, "The Value of Activities."

Grand Total Of \$2200 Collected In Drive

By NAN ALVORD
A total of over \$2,200 was collected by the annual Campus Chest Drive last week, according to Lowell Martin, junior class president and general chairman of the Drive. Although the original goal of \$2,300 was not reached, the amount collected by the Drive was more than that for any previous year.

The week-long drive, beginning Wednesday with an all-campus mixer, culminated Friday with a carnival and auction which netted approximately \$1,500. Winning the trophy given to the booth which brought in the most money were Willis Sweet, Phi Tau, and Delta Gamma, whose gambling casino raised \$148 for the fund. The auction, conducted by auctioneers Al Dingle and Dale Carlisle, was the scene of spirited bidding which brought in \$800.

House Donations
House donations of 25 cents per person were collected, with a record of the group donations kept on a poster erected in the SUB lobby. The poster featured broken hearts for living groups who failed to reach their donation quota.

Living groups who have not yet turned in house donations or auction payments were asked to turn them in to the ASUI office by Thursday noon.

The drive is sponsored annually by the ASUI under direction of the junior class and takes the place of a number of smaller charity drives throughout the year. Allocation of funds will be made by the Executive Board, and proceeds divided among various organizations, which include The World-University Service, Freedom Crusade, Red Cross, American Heart Association, Polio Fund, Religious Emphasis Week, Lewiston Children's Home, Elk's Polio Convalescent Home in Boise, Crippled Children's Fund, Happy Mountain Orphanage in Korea, and the Emergency Fund.

(See page 5 for auction results).

Blue Key Applications Are Due Pronto—Powell

Students who are planning to turn in applications to perform in the Blue Key Talent Show should do so as soon as possible, Neal Powell, co-chairman of the show, announced today.

The show featuring student talent is sponsored each year by Blue Key, national upperclassmen's service honorary, will be held in Memorial Gym at 7:30 p.m. March 8.

"If students are working on an act, but it is not ready for audition yet, they should turn in an application," Powell said. "We are trying to set up a tentative audition schedule and we need to know how many acts to expect."

Powell said the audition committee headed by Dwalne Griffith would contact people to make arrangements for auditions. He said the tryouts would start next week with the majority being held the weekend before the show.

During auditions the committee will divide the acts into three groups. In past years there have been five sections with the winner of each group being awarded a trophy.

"We are trying to eliminate the condition that has been a problem in the past of having only two or three acts in a section," Powell said.

"During auditions the committee will select approximately 20 of the best acts," Powell added. "We aim to have a two hour show with a variety of outstanding student talent."

Judges will be people from the Moscow-Pullman area who are not connected with the University.

Winners of last year's show are not eligible to participate in the show this year, Powell said.

WEDNESDAY:
Alpha Epsilon Delta, 7 p.m., conference room E. Selection of new members.
AWS, 7 p.m., conference room D.

Orchestra, 7 p.m., Women's Gym.
RE Week committee, 8:30 p.m., CCC.
Arg and Gem photographers, 7 p.m., Arg office. Other interested persons invited.

THURSDAY:
Ski club, 6:30 p.m., conference room A. Gem picture.

PLINE ELECTED PRES.
Dairy Science Club elected new officers Thursday, Feb. 14. New officers are: Larry Pline, president; Don Johnson, vice president; Dale Pline, secretary; Jon Huber, treasurer; and Clark Bedow, reporter.

Idaho's selection will then face beauties representing six other IK chapters for regional honors. Competing schools include WSC,

Eastern Washington College of Education, Eastern Oregon College of Education, Whitworth, Gonzaga and Lewis and Clark Normal School.

Once over that hurdle, the regional winner will receive an all-expense paid trip to the National Convention in Salt Lake City early in April where she will face national competition from six other regions.

Tickets for the local dance will sell for \$1.50 a couple, Lee said. Tickets will be sold in advance and at the door.

Other committee chairmen are Roger Seitz, publicity; Tom Stochain, queens; Ardel Parks, decorations; Marv Mackie, music and Bob Livingston, programs.

St. Patrick Rules At Freshman Frolic Highlighting Week
Committees were named last week for the annual Freshman Week, Rich Thomas, class president, said today.

A Saint Patrick's Day theme is planned for the dance, which is set for March 15. Larry Hobson, class vice-president, is general chairman of Freshman Week. Decorations for the dance will be handled by Margaret Remsburg. Publicity co-chairmen are Nan Alvord and Rosemary Maule.

A freshman queen and king will be voted on by class members in their living groups. Dick Boyce and Suzie Snow are in charge of the committee for queen, king nominations.

A date for the Freshman-Sophomore tug-of-war, which is to take place over Paradise Creek, has not been set yet, Tim Daley, chairman of that committee, said.

A general committee meeting is planned for this week.

Fallout Collector Speaks Tonight On Eniwetok Tests
Professor Mel Jackson, head of the chem engineering department, will call on three months work during the 1956 spring atomic tests at Eniwetok when he speaks tonight at a public lecture in Home Ec 6 at 8 p.m.

Jackson, speaking on Radioactive Fallout, spent three months with 70 technical personnel collecting radioactive fallout for the Radiological Defense Lab of San Francisco.

The series of atom tests were carried out at the Pacific location during that period. He has remained in contact with the Frisco laboratory but has not worked on the study.

Prof. William Banks, chairman of the lecture series for the Idaho chapter of the AAUP, will include the program tonight will include Jackson's talk followed by a discussion period. Banks said the lecture meetings are designed for students, the general public and members of the faculty.

IK Dance Will Honor 'Thee' Queen Of Queens
Campus queens—some 10 of them—crowned since March, 1956, will pit their talents against each other for the title of local IK queen early in March.

The "Queen of Queens" will be crowned at an IK dance March 9 from 9-12 p.m. in the SUB ballrooms. Music for the affair, themed "Knight of Knights," will be furnished by the "Pastels."

Idaho's Ball and Chain chapter will enter a candidate for National IK Queen for the first time this year. Men's living groups will vote for five finalists from royalty selected during the past 12 months. IKs will vote for the winner, who will be crowned at intermission of the dance, according to Euclid Lee, dance chairman.

Idaho's selection will then face beauties representing six other IK chapters for regional honors. Competing schools include WSC,

About to be towed into the popular "Tunnel of Love" at the Campus Chest Carnival, Marilyn Crane says something emphatically to Larry Jeppson. Carol Renstrom looks on.

RE Week---On Its Way Out?

Why isn't Religious Emphasis Week a success at the University of Idaho? Is it destined to be another campus activity to decline in effect until it is discontinued?

Two important and far reaching questions should be posed as the campus heads full steam into RE Week, just six days away.

Factual, searching answers to this potent pair of questions could well provide a new look at the Idaho student body.

The RE banquet, long the keystone to the entire week, was discontinued this year because poor attendance put a disastrous drain on available funds.

A "kick-off" convocation Sunday evening replaces it. A speech Monday by Ed Cunningham may or may not leave a lasting impression. That assembly may well spell the success or failure of the entire affair.

Fairly reliable figures show that at most about 25 per cent of the student body attends some segment of RE Week. When one considers that religion is one of the most cosmopolitan of all social preoccupations, that percentage is little short of dismal.

Why the lack of interest? There are several reasons that seem to have a direct bearing. One of these is that there seems to be no concrete, well-defined goal for RE Week. It is clear that the general aim is to both interest and educate students in religion—only the Christian religions are however. A more comprehensive treatment including the other major faiths of the Near and Far East might be appropriate.

A second point of conjecture, that of attracting both believers and non-believers, probably has even more significance. The professed "believers" belong to one church or another that systematically teaches a somewhat narrow viewpoint of

the influence of God, of salvation and of the teachings of the Bible. If they have supported their church to the extent that they regularly attend its services, they are well indoctrinated with that sect's interpretations of these basic tenets of Christianity.

Whether or not they are greatly interested in the teachings of other faiths is debatable and could be—partially at least—an answer to the apparent lack of success of the project.

If this is the case and students are not attending college for the purpose of learning as much as possible about the outside world, there is probably no immediate or logical solution to this disinterest.

From past indications, the only sure and effective way to reach a receptive student body is on the living group level. Here more than anywhere else, students can discuss their beliefs and those of others and do it among people they know well. Familiar surroundings are always more conducive to unrestricted and effective discussions.

From this fact comes a suggestion. Could not RE Week be more important to Idaho if the entire affair was brought solely to the living group level?

Two representatives of different faiths could be sent to a living group for an after dinner discussion and a second pair would follow later in the evening. Over a period of three or four days every major sect would have visited each living group.

Again there is the problem of these constant discussions becoming boring. Sending a pair of men to each session would bring opposing viewpoints into play and contribute to some stimulating and educational discussions.

Unless the committee is on the right track this year and the trend reverses, RE Week is on its way out as a major all-campus function at Idaho.

College Observatory . . . Series Six

Check These Original Ponies!

With Don Neville Smith, The Student Life at Utah State College has come up with some time-tested remedies for use of ponies or cheat sheets, as they are so fondly called.

A dandy way of concealing needed information is printing it on the insides of your eyelids. The material can't be read with your eyes open, and it is quite hard to be read with the eyes shut; but if the information is printed carefully on the inside of the eyelid with India ink, it can be read when you shine a flashlight in your eyes.

When you want to read the information, simply close your eyes and turn the flashlight in your face.

The professor will probably notice your face has become illuminated but will probably never realize that your motives aren't exactly honorable.

Another excellent way of cheating is printing the information on playing cards. When you become stumped in the test and cannot answer anymore of the questions, you can calmly pull out your deck of playing cards and begin playing solitaire.

During your play you can consume the information printed on the cards, and when your game is finished, calmly put the cards back in your pocket and continue with the test.

This method is still relatively new, and professors aren't yet hep to the idea, and haven't decided that the student is cheating.

The most common pony is that used on small bits of paper which can easily be concealed in the palm of your hand. This method can be improved by putting the notes on still smaller pieces of paper so should the professor question the paper, you can simply yell "Happy R.E. Week" or whatever week happens to be occurring at the time (there's always a week being celebrated at Idaho) and throw the paper in the air as if it were confetti.

Another tried and tested pony method, according to the Student Life, is that of concealing the answers in a hollowed-out art gum eraser. The only problem here is that if the eraser should fall on the floor and the instructor picked it up, he would find it so light that he would probably want to keep it for himself.

A few women students at Stanford University took a real stab in the back from their male colleagues recently.

It seems that some of the females wanted fewer social restrictions and stated this in a letter to the editor. The male reply was that "if Stanford is to regain her once prominent social position, she must rid herself of these too liberal social restrictions." Let's have a letter to the editor here, and see what kind of a reply you get.

Latest fad at Louisiana State University is to embroider tennis shoes with the name of your current flame. When the romance dies, you simply clip off the old name and sew an "X" on the spot. "X" means that you're available and scanning the scene.

Small problems down at Ore-

gon. Seems that the furnace in one of the fraternities broke down during a recent spell of very cold weather, and the brothers hung their house manager in effigy from their flag pole.

Another March of Dimes item. Western Union must have decided that their mass telegram idea is a fine business proposition.

Noticed where they have, Portland University signing up names for 10¢ apiece to send their basketball team on its trip to the Middle West. Of course, the main selling point for such a telegram is that the proceeds turned over to the school go to a worthy cause . . . this time it's the March of Dimes.

From the University of Saska-

toon Sheaf comes this recipe for enjoying life a little more. Try it every day of the year.

1 cup of friendly words
2 heaping cups of understanding
4 heaping teaspoons time and patience.

Instruction for Mixing:
Measure words carefully. Add heaping cups of understanding. Use generous amount of time and patience. Keep temperatures low. Do NOT BOIL. Add dash of humor and a pinch of warm personality. Season to taste with SPICE OF LIFE. Serve in individual molds.

This recipe is guaranteed never to fail.

Latest female fad on the University of Oregon campus—grey tinged hair and purple sweaters!

The Idaho Argonaut

Member Associated Collegiate Press

Official publication of the Associated Students of the University of Idaho issued every Tuesday and Friday of the college year. Entered as second class matter at the post office at Moscow, Idaho.

John B. Hughes Editor

Don Ingle Associate Managing Editor

Don Neville Smith Associate Managing Editor

Jim Golden News Editor

Dean Judd Sports Editor

Kay Conrad Acting Copy Editor

Sharron Bartlett Women's Page Editor

Marion Dunning Society Editor

Charlene Wells Church Editor

Bruce Wendle Photography Editor

Marie Van Orman Music Editor

Pat Rojan Advertising Manager

Roger Williams Asst. Advertising Manager

Donna Gale Circulation Manager

Marilyn Stewart Secretary

Harry Platt Typography Consultant

Reporting Staff—Mary Margaret Brown, Sally Beattie, Karen Crouch, Pat Decker, Jim Flanigan, Ann Glaser Rice, Pat Hart, Bob Hill, Robin Merrill, Elcee Merritt, Al Parkins, Claire Strawn, Louise Vandemark.

Women's Page Staff—Nan Alvord, Neela McCowan, Rosemary Maule, Judy Wilson.

Copy Desk—Mary Margaret Broderson, Carolyn Dempsey, Gladys Hansen, Pat Iverson, Margaret Remsburg, Charlotte Ruckman.

Sports Staff—Dwight Chapin, Monte McMurray.

Ad Staff—Skip Nelson, Lucile Palmer, Joanne Pennington, Paul Walters, Joan Wicklund.

Night Staff—Pat Friend, Mary Gilderoy, Lois Lundquist, Judy Parkbiser, Karen Warner.

Circulation Staff—Judy Raschka, Nancy Patterson, Skip Clemons, Nancy Wilmuth, Barbara Joseph, Fran Boudek, Dixie Holman, Doris Wayland, Marilyn Coyle, Peggy Schwartz, Pat Finke, Ann Becker, Sally Stewart and Jo Patrashek.

Photography Staff—Larry Courtney, Don Freshwater, Mark Todd.

Here's More About— Extensive

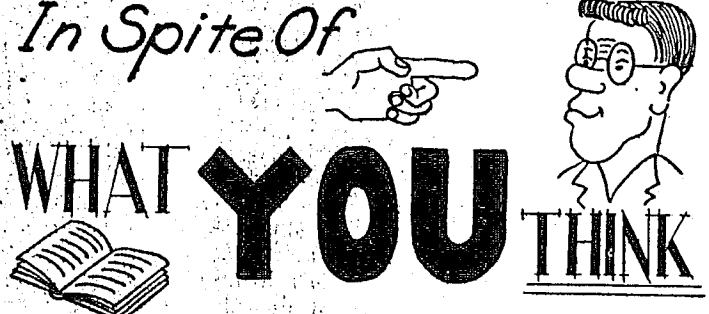
recently: "There seems to have been, in the last few years, a definite re-emphasis of the religious ties that all of us possess. An outstanding example of this is the President of the United States and other civic leaders. We have had an example of this in our own Idaho State Legislature, where a joint resolution won unanimous approval for establishing a chapel here in the Statehouse. These are only isolated examples of a movement which we all feel very personally, and to me it is in great measure the strength of our country."

Students will participate on panel discussions this year to bring campus viewpoints into the limelight. Appearing on Tuesday's panel "I do—but not yet!" on preparation for marriage will be the Rev. Max Ulom, moderator, Dr. Lorell Weiss, the Rev. Harry Johns, Dr. Cunningham, Sunny Kinney, Larry Wing and Mrs. Dick Weeks.

The closing panel Wednesday afternoon will carry out the theme "In God (?) We Trust" by presenting opposing agnostic and religious views. Moderator will be the Rev. Charles Doak. Panel members will be Dr. W. H. Boyer, Professor Francis Seaman, Father Francis Nuxoll, Stan Thomas, Jay Baeker, Reed Bowen and Dick Day.

One Road to Heaven? the panel discussion for Monday evening, will present the beliefs of various denominations, with various local and visiting ministers serving as panel members.

Monday at noon faculty members will join visiting and local ministers for the annual Faculty Luncheon at the SUB. Luncheons will be held at Canterbury house Tuesday and Wednesday for ministers, guides and committee members. Tuesday morning guest speakers and RE Week committee members will evaluate the week's progress



In Spite Of WHAT YOU THINK

By Bill Bates

Religious Emphasis week is now upon us. It has been my experience that for most people this amounts to a period of agreeing with themselves upon the validity of their views and in general being terribly smug about the whole thing.

I therefore suggest that RE week be followed by R-De-E week, Religious De-Emphasis week. Oh, RE week is fine, it makes everyone concerned feel proud of themselves, their ministers are proud of them, their parents are proud of them, the administration is proud of them, and it even makes good publicity.

However, if a person is spending the time and money to get a much overrated college education, he is wasting both if he plans to keep what he does manage to learn sanitariously separated from the delicate collection of half-baked mish-mash that constituted his beliefs when he first came here.

I'm not telling you to junk anything; all I'm saying is tear and compare. Examine one thing in the light of another; don't keep completely contrary concepts around as bookends because you don't know what else to do with them. Decide what you do believe.

If you can, there's yet hope.

Then there was the man who went blind from drinking coffee. He left the spoon in it, and it poked his eye out.

at a breakfast at Canterbury House. Living group representatives should get their requests for "bull sessions" in to Carolyn Dempsey, Embassy committee chairman, immediately. She may be contacted at French House.

Another excellent way of cheating is printing the information on playing cards. When you become stumped in the test and cannot answer anymore of the questions, you can calmly pull out your deck of playing cards and begin playing solitaire.

During your play you can consume the information printed on the cards, and when your game is finished, calmly put the cards back in your pocket and continue with the test.

This method is still relatively new, and professors aren't yet hep to the idea, and haven't decided that the student is cheating.

The most common pony is that used on small bits of paper which can easily be concealed in the palm of your hand. This method can be improved by putting the notes on still smaller pieces of paper so should the professor question the paper, you can simply yell "Happy R.E. Week" or whatever week happens to be occurring at the time (there's always a week being celebrated at Idaho) and throw the paper in the air as if it were confetti.

Another tried and tested pony method, according to the Student Life, is that of concealing the answers in a hollowed-out art gum eraser. The only problem here is that if the eraser should fall on the floor and the instructor picked it up, he would find it so light that he would probably want to keep it for himself.

A few women students at Stanford University took a real stab in the back from their male colleagues recently.

It seems that some of the females wanted fewer social restrictions and stated this in a letter to the editor. The male reply was that "if Stanford is to regain her once prominent social position, she must rid herself of these too liberal social restrictions." Let's have a letter to the editor here, and see what kind of a reply you get.

Latest fad at Louisiana State University is to embroider tennis shoes with the name of your current flame. When the romance dies, you simply clip off the old name and sew an "X" on the spot. "X" means that you're available and scanning the scene.

Small problems down at Ore-



With a successful Campus Chest drive over, RE Week comes into view as the next important all-campus activity. Starting Sunday and for three days after that students will have an opportunity to learn the significance of this year's slogan "In God (?) We Trust."

This, of course, must include the assumption that they believe there is a significance to it. (See editorial.)

Eight religious leaders, each representing a particular faith, will be on campus and will participate in living group discussion sessions, admittedly one of the most valuable events during the week.

A "gung ho" committee is backing this event and doing an excellent job of publicizing it. Whether they can pass along their interest in all Christian religious viewpoints to the mass of the student body is the question.

There is one sure statement that can be made thus far. RE Week has had better publicity than have most other campus-wide projects.

Drinking No Problem

Student-Faculty committee, Friday, began delving into campus drinking once more. The obvious issues were (1) Is there an existing drinking problem on the campus? and (2) What should be done about it?

Nothing concrete from that meeting, but sessions will continue as the group begins a more intensive inquiry.

However, during discussions, Dean Louise Carter told of one school who was having no trouble with alcohol.

Returning to Moscow with the Dean of Women from a Canadian university, Dean Carter was discussing problems she encountered on this campus.

"Do you have any trouble with drinking there?" she asked.

"No," answered the Canadian, "They drink."

The Chest and the Loot

The Campus Chest, one of the most thoroughly service of all the "service" projects, made quite a haul, probably over the \$2,300 goal. Based on early totals of the loot, some of which is still rolling in, it appears that the Chest made a substantial gain over last year.

Camp-eying orchids to junior class prexy Lowell Martin and his officers for the well-coordinated planning that made the drive a "smashing" success.

Saddled with the responsibility of organizing the event immediately after finals were over, Martin and his planners deserve credit that is due.

Combine a riotous French-Canadian household, a beautiful new maid and a 12-year-old boy who is just learning that the world is full of women and you have the setting for "The Happy Time," a movie playing at the Borah theater tomorrow at 4, 7 and 8:30 p.m.

Charles Boyer, a genial and understanding father, tries to give his son, Bobby Driscoll, a solemn picture about the facts of life and love. A traveling salesman uncle who collects ladies' garters and a grandfather who chases widows serve to put the boy in a state of confusion.

The boy's strait-laced mother and his other uncle who persists in drinking white wine from a water cooler offer another amusing contrast in this gay little tale.

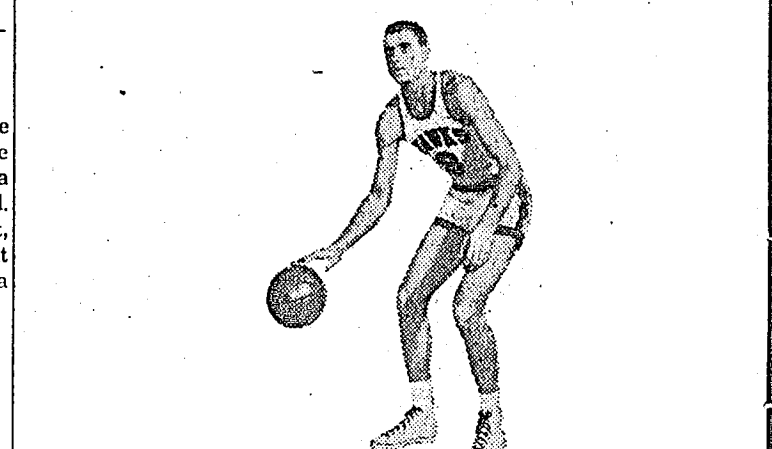
MR

ARG STAFF MEETING

All Staff meeting this afternoon at 4:15 in the Borah Theater of the SUB to view the University of Idaho recruitment movie. Coffee following in the Arg office. Meeting is for all staff members.

Reporter (to visiting Frenchman): "And why are you visiting this country, Duke?"

Duke: "I wish to veeest the famous Mrs. Beach, who had so many sons in France during the last war."



Bob Pettit, BASKETBALL CHAMPION, SAYS: "VICEROY HAS THE SMOOTHEST TASTE OF ALL!"

SMOOTH! From the finest tobacco grown, Viceroy selects only the Smooth Flavor Leaf... Deep-Cured golden brown for extra smoothness!

SUPER SMOOTH! Only Viceroy smooths each puff through 20,000 filters made from pure cellulose—soft, snow-white, natural!

Sterling

Towle — Gorham
Wallace — International
Watches

Omega — Croton — Hamilton and Gruen

Corner Drug & Jewelry

"Where Quality Counts"

JOHNNIES

Perk Up With a Snack

When you feel like having a quick snack, drop by and enjoy one of our tasty burgers or a thick sandwich and a fine cup of coffee.

Friendly Service—Low Prices!

IT PAYS TO ADVERTISE!

Revive the life of your old worn shoes.

Bring them to

MOSCOW SHOE REPAIR
East 3rd St.

Dr. J. F. Gray
OPTOMETRIST
Complete Optical Service
Idaho 1st National Bank Bldg.
Phone 3-1111

★ SERVICE ★

is our Business
While the Station
is but a Sideline

Ray's Shell Service

Pickup and Delivery
Taxi Service
Accessories
Lubrication
Washing
Tires

Phone TU 3-2781
602 South Main
Moscow, Idaho



Don't just sit there!

You'll enjoy today's copy of this publication much more if you'll get up right now and get yourself an ice-cold bottle of Coca-Cola.

(Naturally, we'd be happier, too!)

Drink **Coca-Cola** SIGN OF GOOD TASTE

20,000 FILTERS

SMOKE SMOOTHER VICEROY!

VICEROY
Filter Tip
CIGARETTES
KING-SIZE

Sweetheart Dinner Highlight This Week

Sweetheart Dinners were held by the Kappas, Gamma Phis and Steel House. Betas announce fifteen new members, "Stairway to the Stars" was held for the Phi Delt pledges and the announcement of a Diary Dance to be held by Hays tops this week's campus news.

GAMMA PHI BETA

Thanks to the Sigma Chi pledges for the enjoyable exchange Wednesday.

The Gamma Phis enjoyed working with the Sigma Chis and Uppham Hall on the Campus Chest. Thanks to our chairman, Jan Wilms.

The traditional "Sweetheart Banquet" was held Sunday honoring the pinned and engaged. Guests were: Bill Booth, Tom Cook, John Platt, Phi Delt; Bill Galligan, Beta; Bill Friede, TKE; Warren Olney, Delta Sig, and John Kolodzie, a Pi Kap from WSC.

Congratulations to Margaret Rensberg for being the new Gamma Phi Crescent Girl.

Dinner guests Wednesday were: Bobby Enslin, DG; Janice Barrell, Alpha Phi; Joan Cady, Tri-Delt; and Annette Manser, Theta.

WILLIS SWEET

Thanks to the Moscow merchants for the prizes donated at the Campus Chest. Thanks to the DGs and the Phi Taus for their help at the Campus Chest.

Twenty-five new residents moved into Willis Sweet at the semester. They include: Max Beckman, Larry Blyth, Cal Bosse, Bob Brasch, Conrad Chaburn, Roger Collier, Gary Craig, Clinton Gardner, Thomas Gyle, Kenneth Hack, Robert Holland, James King, Robert Lee, Lawrence Lickley, David McCormick, Greg Malcolm, Jack Maynard, William Purcell, Phil Reddington, Richard Seubert, Terry Slette, Lloyd Taylor, Ron Warnke, Gary Wright and Robert Yost.

KAPPA KAPPA GAMMA

We're happy to welcome back Loretta Alley and Ann Holden, who are now living in the house.

The annual "Sweetheart Dinner" was held Thursday night. Thirteen guests were present. The decorations followed a red and white Valentine theme. For entertainment the sextette sang "Wonderful Guy."

We enjoyed having Denny Morris, Alpha Phi, Adele Thomas, Moscow alum and Dr. Dadrion of the Sociology department as guests Sunday.

Many thanks to June Sleeman, house chairman for the Campus Chest.

Congratulations to new Hell Diver, Pat Decker.

Phi Taus—the pledges say thank you for the fun they had at the exchange and the "extemporaneous" serenade.

HAYS HALL

Congratulations to Gail Larsen and Jim Asaph, Beta, on their recent pinning.

New girls in the hall this semester are Eileen O'Mara, Virginia Aspen, Ruth Ellen Ridner and Kathy Marlett.

In the Monday night house meeting plans were made for the annual Diary Dance with the theme of "Written in the Wind." A fireside for Sunday, Feb. 19, was also planned with the girls from Hays, French and their dates attending.

An enjoyable evening was spent Wednesday night at a Valentine fireside. The girls drew names and wrote valentines about the girl whose names they drew. The new girls were introduced and donuts and punch served.

Hays bought the services of Gault, Willis Sweet and Delta Sigs in the Campus Chest auction.

Guests of the past week include Barbara Harbison, Lewiston, and a group of girls from the Commercial Club at Kellogg.

Sunday dinner guests were Jim Asaph, Beta; Art Misner and Jerry Hooper, SAE.

BETA THETA PI

Beta Theta Pi initiated fifteen new members last Saturday. The new members are Bill Montgomery, Tim Daley, Jerry Gneckow, Mike Killien, Dean Sorenson, Barry Thielke, Tom Ratcliffe, Denny McClean, Art Lindemer, Dick Wyatt, Dave Munn, Bob Hanson, Garth Brown, Jim Gneckow and Jon Nilsson. The initiation was followed by an initiation banquet. The speakers at the dinner were Cole Sherwood, house president; Jim Lyle, alumni secretary; Dave Cummins, senior representative; Mike Patton, junior representative; Ed Kale, sophomore representative and Bill Montgomery, freshman representative. The guests at the dinner included Dean J. Grover Eldridge, Moscow; Powell Nilsson, Genesee; Chuck Lund and Don Modie, Lewiston; and L. C. Robinson, Moscow.

We are very happy to announce the pledging of Gale Conrad.

The annual Northwest Beta songfest is to be held Sat. Feb. 23, at Spokane, Wash. Our sixteen-man chorus, or as we call it "Kale's Folly," is representing Gamma Gamma. Three of the house officers have been chosen to speak at the officers' convocation of the songfest. Cole Sherwood is the chairman of the convocation; Mike Patton will speak on rush, and Dave Maxey will speak on pledge training.

Thanks to John Turner on the excellent sculpturing work he did on "Col. J. T. Corpono."

During the past week Gamma Gamma was visited by Mr. and Mrs. Robert Newhouse of Boise and Bud McDonald.

Congratulations to Bill Galligan on his pinning to Sue McMahon, Gamma Phi; Jim Asaph on his pinning to Gail Larson, Hays Hall, and to Bryant Sather on his pinning to Penny Pendergast, Forney Hall.

DELTA DELTA DELTA

A successful initiation dance was held Sat. night with the theme of "Stairway to the Stars." Music was supplied by the Sigma Chi Band. Thanks to the chaperones who were MF and Mrs. R. C. Thielke, Mr. and Mrs. John McMullan and Mr. and Mrs. Dick Parsell.

The Deltas arrived bright and early Sunday for the traditional mattress ride in honor of Dick Galloway's pinning to Colleen Watson.

Thanks to the Delt pledges for the serenade in honor of our new pledge, Shirley Nettingham.

After three days of guessing, Heart Sisters were revealed at the fireside on Valentines Day.

Thanks to Lindley Hall for the enjoyable exchange last week.

Thanks to the Deltas, Pine Hall, Kaye Prestwich and Mary Walcott for their work on the Campus Chest Dinner guests were Fred Cone and Fred Bourque, TKE.

Delta week is being held this week with initiation this weekend.

DELTA TAU DELTA

Formal initiation was held last Wednesday for our four new pledges: Chuck Bend, Boise; Jack Frazier, Jerome; Ron Adams, Bristol, England and Benny King, Nampa. The pledges escorted the DG

pledges to the Campus Chest kick-off dance Wednesday night.

Thanks to the Tri-Delts and Pine Hall for their cooperation on the Campus Chest booth, and congratulations to Jerry "Liberace" Shiveley and Jack "Elvis" Frazier for their successful efforts.

Congratulations also to Gary "Rink" Simmons on setting a new Pacific Coast Conference record for consecutive free throws with 26 straight.

STEEL HOUSE

House elections were held last Monday night and those elected were: Betty Wiswall, president; Charlene Roth, vice-president; Rose Kimpton, secretary; Audrey Ross, treasurer; Kay B. Zenier, AWS Representative; Virginia Hale, song leader; Rozann Slade, social chairman and Barbara Riedeman, house activities chairman.

A Valentine dinner was held Wednesday night. Guests were: Elwood Kinner, Lash LaRue, Gault; Mel Bryant, Delta Sig; Royce Wise, Willis Sweet; Wendell Wolf, Blane Cornell, Campus Club; Larry McCulloch, Phi Delt; Darrell Adams, SAE; Stan Sweet, Don Pridmore, Idaho Club; J. E. Greenstreet, Uppham; "Mac" McArthur, Moscow; Ken Goodwin, Delta Sig; Supt. A. B. McDonald, Moscow; Don Harris, Delta Chi and Ed Clark, International House. Sunday dinner guest was Kathy New, Forney Hall.

CAMPUS CLUB

A committee of seven from French House were Wednesday evening dinner guests who studied the operation of a cooperative type kitchen.

ALPHA CHI OMEGA

Thanks to the Deltas for the beautiful serenade in honor of the new pledges last week.

The house would like to congratulate Claudette Kerns on being elected president of NSEA and Mike Beglan on being tapped for Hell Divers.

Three sections of the debates will be entered by the team: extemporaneous speaking, oratory, and oral interpretation.

The debate will be held at Idaho next year.

Squish, And The Aftermath



Six proud pie eaters, each exhibiting a suitable amount of goo smeared on their face, "merge triumphant" after a contest at the Forester's Ball Saturday.

UI Defends Title At Debate Tourney

The Idaho Debate team will be defending champions at the annual all-Idaho Speech Tournament Feb. 22-23 at Pocatello. Only teams from Idaho colleges will compete.

The University will be represented by Reed Bowen, Dick Sorenson, Bob Ridener, Dick Day, Don Ridener, Robert Hill, James Burt, and Richard Hughes.

The U of I team has entered in several other debates this year. At the Columbia Valley Tournament held in Pullman, Idaho tied for second. Bowen and Sorenson won first place in the Inland Empire Debate.

Formal pledging took place before dress dinner Wednesday at which time the new pledges found out who their Big Sisters were.

Guests for dinner this Sunday were Mr. and Mrs. C. J. Knefel from Parma.

READ THE CLASSIFIEDS!

Bridge Tournament Sponsored By SUB

The SUB Game Room Committee will sponsor a bridge tournament March 4-9 in the SUB. Competition will be among all living groups with two from each house competing.

The Goren point count method of contract bridge bidding will be the rules to be followed.

COUPLE IS "FORESTED-LIKE"

Named the most "forester-like" couple at the Forester Club were Donald Primore, Idaho Club, and Mary Ellen Ogston, French house. They were chosen from the 150 costumed couples present. Johnny Pappas, business, won a pie-eating contest and was awarded a bottle of Alka-Seltzer for his efforts. The door prize, a door, was won by Dr. M. E. Detters, forest management professor.

"A fool can ask more questions than a wise man can answer."
"No wonder so many of us flunk."

Marine Recruiter Seeks Out Women

Captain Ruth J. O'Holleran, U.S. Marine Corps, who is in charge of women officer selection for the West Coast, will visit the Student Union building Feb. 28 and March 1, to provide information on the women officer training program.

A limited number of college women currently are being considered for the Marine Corps Women Officers training class which commissions women in the Marines. The course is offered to undergraduates, but no commissions are effected until after graduation.

Juniors and sophomores entering the program spend two six-week summer vacations in indoctrination sessions at the Marine Corps School, Quantico, Va. Upon successful completion of the training, the college graduate is commissioned as a Second Lieutenant in the Marine Corps Reserve. Women officers receive the same pay and privileges as their male counterparts.

AWS Council Hosts Annual Exchange With WSC Group

Idaho's AWS council was host to the AWS council from WSC Saturday morning for their annual exchange. Breakfast was held in the Strynga Room.

After breakfast, panels were held to discuss the different problems of the councils. Dorothy Jacobson was in charge of the exchange. She introduced the new Dean of Women at WSC, Dean Northrup, and Dean Louise Carter. Other speakers were AWS president, Sue McMahan and WSC's AWS president Carolyn Schabb.

Hinckley Leads LDS Student Church Group

New officers to head the LDS student-church group were announced Sunday. Branch President is Keith Hinckley. His Counselors include Earl Banner and Burton Orme along with clerks Larry Moore and Jerry Brower.

Glen Thomas is the new Superintendent of the Sunday School. Assisting him are Reed Welker and Tonia Peterson. Dorothy Purser will head the Women's Mutual aided by Marilyn Nugent and Dorothy Gardner. At the head of the Men's Mutual are Kim Larsen, Dick Broullin, and Allen Jensen. Carolyn Peterson, Jean Dille and Barbara Hauser will be in charge of the Women's Institute Society.

One of the outstanding features of the LDS group is that the entire organization, including officers and advisors, is made up of students. The one exception is Dr. George Tanner who is the Director of the LDS Institute here on campus.

Sanford Downing Heads Phi Mu

Stanford Downing Thursday night was elected president of Phi Mu Alpha-Sinfonia, men's music honorary. He replaced Lauren Hicks who vacated his office when he graduated at the end of the first semester.

Howard Deming, WSC faculty advisor for Phi Mu, was guest speaker.

Patronise Argonaut Advertisers

Tom Trail Tells Westminster Of Nepal Life

Tom Trail, International Farm Youth Exchange Student to Nepal was featured speaker Sunday at the regular meeting of Westminster Forum.

Trail described the farming in Nepal. He displayed the typical native dress of Nepal and slides on the country in general. Special guests for the program were Moscow High School seniors.

A Newcomer's Party will be held Feb. 19 in the basement of the CCC. Everyone is invited to attend. Shrove Tuesday Plans Near Completion

According to co-chairmen Betty Bovey and Diane Davis, plans for the annual Shrove Tuesday pancake supper, held annually by Canterbury, are now complete. Tickets may be purchased from any member of Canterbury Club.

Dr. Charles Le Guin, professor of history, spoke to Canterbury Sunday on religious and secular revolutions.

Paper Names Mary Verburg Campus Citizen

Mary Margaret Verburg, Forney Hall president, was the Spokesman-Review's "Campus Citizen of the Week" Sunday.

Miss Verburg, a physical education major, works part-time as a secretary to the women's PE Department at Idaho. She has held the Potlatch Forest foundation scholarship at Moscow for the past four years.

Among her other accomplishments are a membership in the governing board of the women's recreation association and being co-manager of the Independent party.

In earlier editions of the Spokesman, Dick Weeks, ASUI president, and John Thornock, former executive board member, were named "Campus Citizen" of the Inland Empire.

Before I heard the doctors tell The dangers of a kiss, I had considered kissing you The nearest thing to bliss. But now I know biology And sit and sigh and moan Six thousand damn bacteria And I thought we were alone.

Burgess Optical Laboratories, Inc.
Quick Expert Duplications
Frames — Lenses
O'Connor Bldg. Ph. 2-1344

SMITH CORONA PORTABLE TYPEWRITERS
SALE SERVICE RENTALS
All Makes of Portables
No Down Payments \$1.00 Per Week
Lemman Office Equipment
105 East 2nd

For Free Delivery SHOP
Willis Grocery And Market
531 S. Main
Phone 2-1353

SEE US NOW FOR YOUR **Body & Fender Work**
NEELY & SON
123 West 4th Moscow

SOCIAL CALENDAR
Feb. 22—Holiday! Washington's Birthday
Basketball, Idaho vs. OSC, at Moscow
Feb. 23—Basketball, Idaho vs. OSC, at Moscow
Engineer's Ball, SUB, 9-12 p.m.
Swimming Meet, WSC at Moscow
Feb. 24—Religious Emphasis Week, Feb. 24-27
Religious Emphasis Convocation and coffee hour, 7 p.m.
Feb. 25—Religious Emphasis Assembly
Feb. 28—Faculty Recital

For Winter Sports Equipment and All Hardware Appliances Go Now to
WARDS Paint & Hardware Co.
404 S. Main

Live better...ELECTRICALLY
THE WASHINGTON WATER POWER CO.

Sticklers!
IF YOU WERE STUCK FOR DAYS WITHOUT LUCKIES, WHAT WOULD YOU HAVE? (SEE PARAGRAPH BELOW)

LUCKY STRIKE CIGARETTES

YOU'RE STRANDED high on a peak in the Andes. Wind's rising. Thermometer's dropping. And the next llama for Lima leaves in 7 days. You reach for a Lucky... try every pocket... but you're fresh out. Brother, you're in for a **Bleak Week!** No cigarette anywhere can match the taste of a Lucky. A Lucky is all cigarette... nothing but fine, mild, good-tasting tobacco that's **TOASTED** to taste even better. Try one right now. You'll say it's the best-tasting cigarette you ever smoked!

DON'T JUST STAND THERE... **STICKLE! MAKE \$25**

Sticklers are simple riddles with two-word rhyming answers. Both words must have the same number of syllables. (No drawings, please!) We'll shell out \$25 for all we use—and for hundreds that never see print. So send stacks of 'em with your name, address, college and class to Happy-Joe-Lucky, Box 67A, Mount Vernon, N. Y.

Luckies Taste Better
"IT'S TOASTED" TO TASTE BETTER... CLEANER, FRESHER, SMOOTHER!

WHAT IS A CONCEITED BOXER? **Smug Pug**
R. L. UNDERBRINK, U. OF CHICAGO

WHAT IS A TOUGH GUY'S BREAKFAST? **Yegg's Eggs**
JOSEPH DIAMOND, WAYNE UNIVERSITY

WHAT IS A SODA FOUNTAIN? **Calorie Gallery**
PAUL LION, U. OF SOUTHERN CAL.

WHAT IS FAKE FEROCITY? **Stage Rage**
VIRGINIA HOUSMAN, MICHIGAN STATE

WHAT IS A PUGNACIOUS FORTUNETELLER? **Fistic Mystic**
MARTIN KATZ, C.C.N.Y.

WHAT IS A COLLEGE FACULTY ROOM? **Mentor Center**
A. JEROME EDISON, OBERLIN

WHAT IS A SHORT ARGUMENT? **Brief Beef**
DANIEL CONSTANT, SANTA MONICA CITY COLL.

D.A.T. Co. PRODUCT OF The American Tobacco Company AMERICA'S LEADING MANUFACTURER OF CIGARETTES

Interest High In SUB Facilities

Increased student interest and participation in recreational activities of the SUB during the past months have completely over-run the available facilities, Gale Mix, ASUI General Manager, said yesterday.

"During the last month," Mix said, "The receipts from the bowling alley have increased 33 to 50 per cent. Receipts from billiards pool, and ping pong are up about 15 per cent," he added.

The game room in the Student Union is in operation every week day from 9 a.m. to 11 p.m. at night, and from 10 a.m. to 12 p.m. on weekends.

"Around 600-800 students and faculty bowl every week," Mix said, "with the increase in number of P.E. courses the number will even go higher before the bowling season is over."

"The big increase in women's physical education classes which use the alleys from 9 a.m. to 3 p.m. completely fills the game room schedule," Mix said. "Students take

a nine weeks course in learning how to bowl from instructors in the P.E. Dept.," Mix added.

Two Leagues
Faculty members have two bowling leagues. They bowl on Monday and Wednesday nights. The men's living group bowling teams bowl on Tuesday and Thursday nights in intramural competition.

"We are running the alleys every possible moment, but we still can't accommodate the people who want to bowl," Mix said.

Idaho has 3 alleys for less than 4000 students or an alley for every 400 students.

"The national average in college throughout the US is about one alley for every 800 students," Mix said. "We have about twice the interest at Idaho compared to the national average."

"We had to schedule the WRA women's living group bowling championships from 10-12 on Saturday mornings because it was the only time we could give them,"

Mix added.

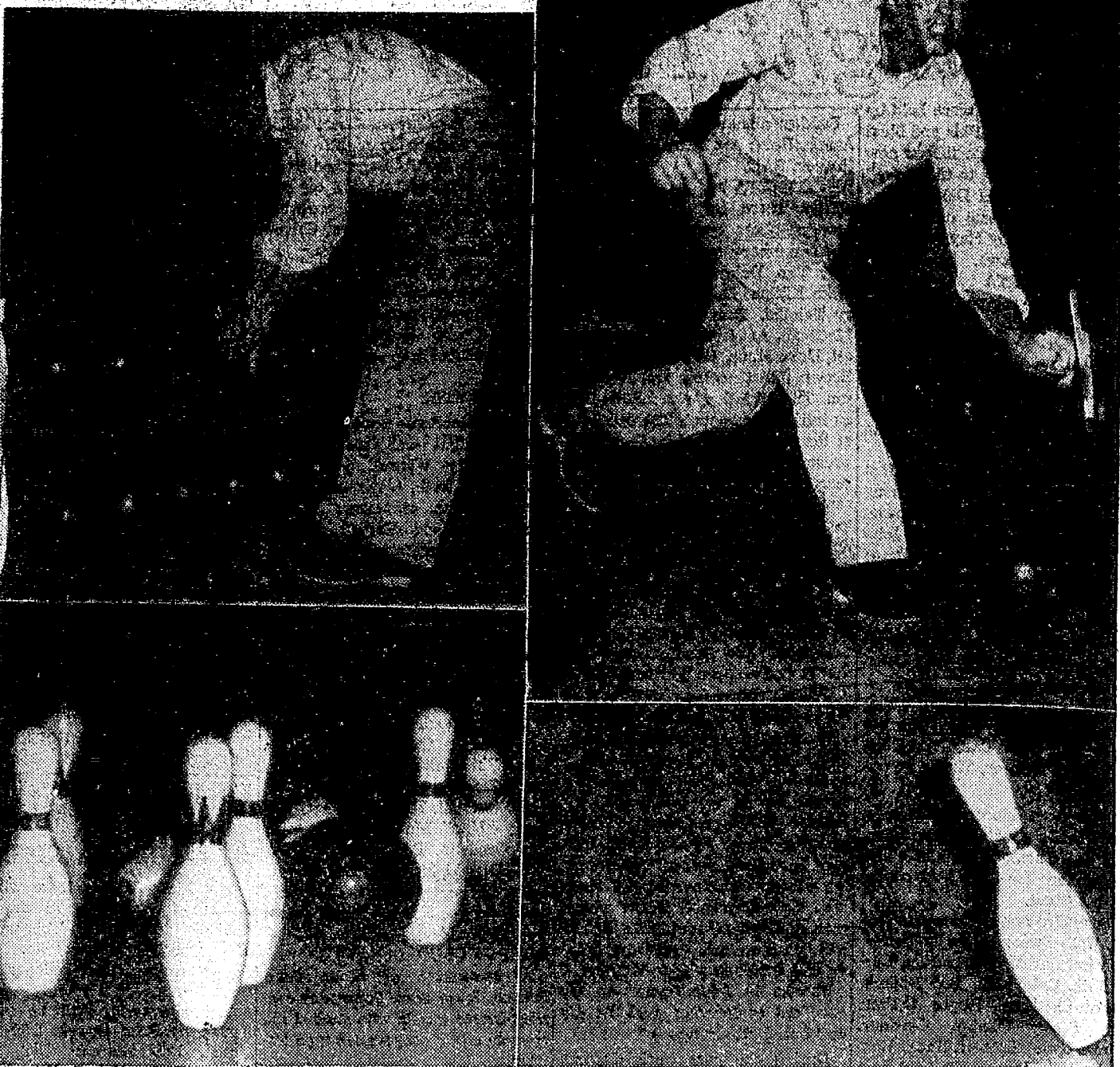
With the increased use of the game room many problems plague the operators. The big one facing Idaho bowling alley operators is pin setters.

"We employ about 30 men to set pins now and about 60 per cent of these are junior high and high school students," Mix commented. "We will have to solve the problem by installing automatic pin setting equipment," Mix said. "The University of Washington and University of Oregon have recently ordered automatic equipment," he added.

"We are very fortunate this year to have Earl Hall, a student from England who has had lots of experience with bowling alleys, managing the game room," Mix mentioned. "Hall and two other students have worked and maintained the alleys to make them some of the best in the Inland Empire."

The increase in bowling interest follows the trend of students,

... So He Got A Spare



Richard Bruckner, Jr., is one of the hundreds of Idahoans who make use of the SUB's eight bowling lanes. Here, he latches onto a ball, lets fly... and finally gets a spare for his pains.

The magician walked down to its feet.

The footlights and asked a young lady to step up on the stage.

"Now, as a climax to my act, ladies and gentlemen," he said, "I am going to saw this young lady in two, right before your eyes."

The crowd cheered and stomped.

"As is customary before doing this trick," he continued, "I'd like first to make sure that you all want to see."

A thundering "Sure!"

"And there are no objections to my performing—"

"No" rocked the house.

"The girl's sorority sisters—do two.

We all thought it was very funny but the police made quite a fuss about it.

Often when a man says his mind is getting broader it only means his conscience is stretching.

Board Of Regents Okehs Ag School Appointment

A professor who taught one year at Idaho in 1934-35 while a regular faculty member was on leave of absence will take over a new job here this week.

This was revealed in the announcement today by President D. R. Theophilus of new appointments, following Board of Regent's approval.

The returning faculty member is Dr. John Love Barnhart, who has been named associate professor and associate dairy husbandman. He succeeds Dr. James C. Boyd, who resigned to become department head at Montana State college.

Dr. Barnhart holds degrees from Pennsylvania State college and the University of West Virginia. His teaching career has taken him to Temple university, Kansas State college and Oklahoma A. & M. He returns to Idaho from the position of technical director, Dairy Industry Supply association, Washington, D. C. He is a colonel in the Air Force Reserves.

Other Appointments
Named associate professor of mathematics was Dr. Hans Sagan, who has been on the faculty of Montana State college. A native of Austria, he has his doctorate degree from the University of Vienna. Miss Ethel Roorda, who has been teaching at Buena Vista college in Iowa, was appointed assistant professor of mathematics. A graduate of Central College of Iowa, she holds a master's degree from the State University of Iowa.

George D. Frazier was named assistant agricultural economist, junior, and assistant forestry economist, junior. A University of Idaho forestry graduate of 1950, he has been serving in the state since that time with Potlatch Forests, Inc.

The Auction Results

Here is a rundown of "who bought who" at the Campus Chest auction sale Friday night:

Alpha Chi—Teke picnic, \$15; Alpha Tau grab bag, \$8.

Alpha Phi—Sigma Nu picnic, \$41.

Tri-Delt—Sig Alph pledge class, \$16; Lambda Chi's Ron Osborn, \$3; LDS picnic, \$4.

Ethel Steel—Pine Hall surprise package, \$2; Lindley work party, \$22.

Forney—Delta Chi decoration service for house dance, \$9.

Gamma Phi—Beta beach party and valet service, \$18.

Hays—Willis Sweet cruise, \$20; Idaho Club picnic, \$7; Delta Sig call boy service, \$8.

Theta—Kappa Sig band, \$26; Phi Delt picnic, \$10.

Kappa—Upham chauffeur service, \$4; Sigma Chi serenades, \$8; Delt exchange, \$13.

French—Gault picnic, \$16.

Pi Phi—Fiji valet service, \$8.

Gault—Alpha Chi surprise package, \$38.

Willis Sweet—Alpha Phi decorating party, \$40.

Sigma Chi—Tri-Delt barbeque, \$52.

Beta—Delta Gamma valet service, \$46.

Campus Club—Ethel Steel work group, \$13.

Delta Chi—Forney Hall slave service, \$33.

Fiji—Gamma Phi car wash, \$55.

Upham—Hays work party, \$28.

Kappa Sig—Theta car wash, \$36.

Delt—Kappa valet service, \$58.

Idaho Club—French work party, \$12.

Sig Alph—Pi Phi pizza dinner, \$70.

Teke—Campus Club senior class, \$4.

Lindley—Chrisman hashers, \$8.

Alpha Tau—Farm house work party, \$16.

Farm House—Phi Tau atom bomb, \$10.

Idaho Bred Gilt Best At Sale

Bringing \$205, a Duroc bred gilt consigned by the college of agriculture topped the recent purebred gilt sale sponsored by the Washington Swine Breeders association and the Northern Idaho Swine Breeders association.

Purchaser was P. C. Schemmell of Walla Walla, Washington. Average price for the 53 animals going through the sale ring at the Colfax event was \$138.11. Seven breeds were represented in the sale.

"The bred gilt topping the sale was a selection from the University of Idaho breeding herd," explains Dr. W. P. Lehrer, Jr., associate animal husbandman with the university experiment station. "The \$205 paid for the University of Idaho animal exceeded by \$35 the second high for the sale."

Another University of Idaho gilt brought \$145, also above sale average. Purchaser of this animal was Edward O. Kearley, a sophomore in agriculture at the University of Idaho, who is looking forward to the development of a top quality swine herd.

A castaway on a wrecked ship he called on the king and proved captured by cannibals. Each day his arm was cut by daggers, and the natives of the island would drink his blood. Finally, one day,

ARDEN FARM CO.

CAKES, COOKIES, BREADS AND PASTRIES FOR ALL OCCASIONS
Moscow Bakery

Idaho Farms Make Most Of Electricity

Graphic explanation of why farmers have gone in so heavily for electric motors yesterday came from J. W. Martin, head of agricultural engineering at the University of Idaho. With around 97 per cent of its farms making use of electricity, Idaho is one of the national leaders in farm electrification.

"The average farm electric motor is a hired man willing to work for \$10 to \$15 a month," Martin said in his report at the winter meeting of the Idaho farm electrification committee.

"This hired man never sleeps, never eats, and never gets tired," he explained. "For 5 cents this hired man will do any of these typical farm jobs: milk 50 cows, pump 1,000 buckets of water, saw two cords of wood, separate 5,000 pounds of milk, or shell 75 bushels corn."

Martin also indicated that great though the rise in farm use of electricity has been even greater increases are forecast.

PROBLEM: To evaluate the all-round career advantages offered by the widely diversified activities at Divisions of North American Aviation, Inc.

FIRST STEP: GET THE FACTS in man-to-man interviews, on campus

February 27

As a graduate in Engineering, Physics, Applied Math, or allied subjects you need complete, factual information to help you make a sound decision in choosing your career. Get the facts in a man-to-man interview with our representative. Let him tell you about our unique placement and training devised to help your potential develop rapidly in a company where continued expansion has doubled the number of employees in 5 years. Your possibilities are wide and varied, as you will see from these brief notes on the 4 Divisions:

of his specialty in one week than in a year of "conventional" practice.

AUTONETICS creates automatic controls and electro-mechanical systems of a highly interesting nature. Work includes research, design, development, manufacture and testing; you will become a part of the latest advances in inertial navigation and guidance, fire and flight controls, analog and digital computers.

ROCKETDYNE is building power for outer space—large, liquid propellant rocket engines. The Field Test Laboratory in the Santa Susana Mountains is the most complete rocket engine workshop in the free world. Here a man meets more aspects

ATOMICS INTERNATIONAL is pioneering in the creative use of the atom. If you are able to meet the high requirements for this work, you can help introduce a new industrial era. Atomics International is designing and building varied types of nuclear reactors, for both power and research, with the practical experience gained by 10 years in the field.

MISSILE DEVELOPMENT ENGINEERING Long range missiles, including the intercontinental SM-64 Navaho, present problems of the most fascinating nature. Speeds, materials and functions now being dealt with were only theoretical a few years ago. The work is vital; the opportunities for you, as a creative engineer, are correspondingly great.

CONTACT YOUR PLACEMENT OFFICE TODAY
Make an appointment NOW to see North American Representative on campus. OR WRITE: Mr. J. Kimbark, College Relations Representative, Dept. 991-20, North American Aviation, Inc., Downey, Calif.

COLLEGE SENIORS and GRADUATE STUDENTS

In Engineering
Business
Physical Sciences
Liberal Arts

To Talk About YOUR FUTURE

February 28 - March 1

WITH THE BELL SYSTEM

PACIFIC TELEPHONE
Engineers, technical and non-technical graduates to train for responsible engineering and administrative positions in the telephone industry on the Pacific Coast.

WESTERN ELECTRIC
Engineering and business administration graduates to work on the manufacture, distribution and installation of telephone equipment on the Pacific Coast, and for field engineering on special electronic devices.

BELL TELEPHONE LABORATORIES
Technical graduates for research and development work in communications and electronics with one of the world's foremost research laboratories in the New York area.

SANDIA CORPORATION
Graduates in electronics and physical sciences for applied research, development, and design on ordnance phases of atomic weapons near Albuquerque, N. M., and Livermore, Calif.

PACIFIC TELEPHONE HAS A LIMITED NUMBER OF SUMMER JOBS FOR ENGINEERS.

PLEASE SIGN UP IN ADVANCE AT

(Technical Students)
ENGINEERING HALL

(Non-technical Students)
PLACEMENT BUREAU

THIS IS THE PLACE TO BUILD YOUR FUTURE!

Religious Emphasis Week, Feb. 24-27

	SUNDAY, FEB. 24	MONDAY, FEB. 25	TUESDAY, FEB. 26	WEDNESDAY, FEB. 27
MORNING	Worship in local churches. The following churches are participating in the opening of R.E. Week: Methodist Presbyterian Lutheran Baptist Episcopal St. Mark's; Christian Christian Scientist L.D.S. St. Mary's Catholic	R.E. Week Radio Broadcast over KRPL 10:15 to 10:30 PUBLIC EVENTS ASSEMBLY 11:00—Ad. Auditorium SPEAKER: Rev. Cunningham.	BREAKFAST for guest leaders, R.E. Week Committee and advisors. 7:30 a.m.—Canterbury R.E. Week Radio Broadcast over KRPL 10:15 to 10:30	R.E. Week Radio Broadcast over KRPL 10:15 to 10:30
NOON		FACULTY LUNCHEON North Ball Room, SUB SPEAKER: Rev. J. Stanley Barlow	LUNCHEON for guest leaders, R.E. Week Committee, local pastors, and advisors. Canterbury	LUNCHEON for guest leaders, R.E. Week Committee, local pastors, and advisors. Canterbury
3:10 P.M.	RETREAT for guest leaders, R.E. Week Committee, and advisors. 3:00 p.m. Canterbury	SEMINARS: Isaksen: "Mending Moods With Religion" Conf. Room A—SUB Lutnes: "Religion and World Social Problems" Conf. Room B—SUB Sanderson: "Was Jesus a Christian?" Borah Theater—SUB	SEMINARS: Sutherland: "What's Wrong?" Conf. Room A—SUB Sanderson: "Three Parables and Their Religious Significance: Moby Dick, Old Man and the Sea, and Jonah." Borah Theater—SUB Weisgoff: "It's a Miracle" Conf. Room B—SUB	SEMINARS: Sutherland: "My Brother's Keeper?" Conf. Room A—SUB Weisgoff: "Judeo-Christianity—the Only Religion?" Borah Theater—SUB Hubbard: "It's in the Book" Conf. Room B—SUB
4:10 P.M.		SEMINARS: Barlow: "Hell—Yes? No?" Borah Theater—SUB Cunningham: "Slide-Religion" Conf. Room A—SUB Isaksen: "Do Unto Your Roommate . . ." Conf. Room B—SUB	SEMINARS: Cunningham: "Why Pray?" Conf. Room A—SUB Barlow: "With My Brains I Don't Need Religion!" Conf. Room B—SUB Hubbard: "Church—A Necessity?" Borah Theater—SUB Lutnes: "Sex Appeal" So. Ball Room—SUB	CLOSING PANEL: The Validity of a Religious World View in the Mid-20th Century Borah Theater or Central Ball Room—SUB Panelists: Dr. Boyer Rev. Nuxoll Dr. Seaman Mr. Stanley Thomas Jay Eacker Reed Bowen Dick Day Moderator: Rev. Doak
EVENING	DINNER for guest leaders, R. E. Week Committee. 5:30 p.m. Canterbury CONVOCATION 7:00 University Auditorium. SPEAKER: Rev. Ed. Cunningham COFFEE HOUR in the Student Union Building. 8:00 p.m.	PANEL: "One Road to Heaven" 8:00 p.m.—SUB Borah Theater or Central Ball Room Panelists: Rabbi Sanderson Rt. Rev. Hubbard Rev. Isaksen Rev. Lutnes Rev. Sutherland Moderator: Rev. Barlow	PANEL ON MARRIAGE "I do—but not yet" 8:00 p.m.—SUB Borah Theater or Central Ball Room Panelists: Dr. Weiss Rev. Johns Rev. Cunningham Sunny Kinney Larry Wing Dixie Weeks Moderator: Rev. Ullom	Rev. Ed Cunningham will speak at the La-tah County Laymen's Association dinner 8:30 New Idaho Hotel

Sunday Musical Out Of Ordinary

By Marie Van Orman
As one concert-goer put it, the Sunday musical program was "a little out of the ordinary." To most musical audiences "the ordinary" would mean a program beginning with Bach, progressing through Mozart or Haydn to Beethoven and various Romantic composers, and ending with a couple of modern numbers.

Those present at the concert held Sunday afternoon in the Recital Hall got a longer taste of music as seen and expressed by America's contemporary composers, and apparently like it!

Employing five varied performing mediums, the program opened with a women's vocal sextet singing a religious selection by Howard Hanson, "How Excellent Thy Name," contrasted with a lighter piece, Persichetti's "Hill Wals."

Pianist Dixie Weeks continued the program with a group of interpretive selections by Ernest Bloch, portraying "Visions and Prophecies." Also sparking the instrumental part of the program, a brass quartet played "Two Short Pieces for Brass Quartet," by Houston Bright and a "Prelude for Brass Quartet" by Burrill Phillips.

As a contrast, Soprano Faye Udell, accompanied by Mary Owl, presented two arias and the summary of "The Telephone," a tale of a woman's conversations on the telephone, written in light opera style by Gino C. Menotti. The concert choir, organized and conducted by Glen R. Lockery with Marian Frykman accompanying, concluded the program with two modern choral selections, "Out of the Cradle" by Robert L. Sanders, and "Dirge for Two Veterans" by Norman Lockwood.

Highlighting these numbers were soprano Marigay Nelson and mezzo-soprano Barbara Nonneman.

Music Interest
In sponsoring the concert, Phi Mu Alpha-Sinfonia and Sigma Alpha Iota, men and women's music honoraries for Idaho, combined efforts in an attempt to further student interest in modern music. Considering that to many ears this music is complex and "different," utilizing new, experimental harmonies and melodies instead of the tradi-

Orchestra Is Now League Member

The University Symphony Orchestra has gained membership in the American Symphony Orchestra League, the music department announced Monday.

One of the purposes of the American Symphony Orchestra League is to develop and stimulate the growth of civic and community orchestras and to further the welfare of these organizations by an interchange of ideas and services. New conductor of the University Symphony, LeRoy Bauer, has been a member of the League for six years.

Summer School Catalogs Being Sent To Students

University of Idaho summer school catalogs are being mailed this week to prospective students who wish to attend the 44th term, Dean J. Frederick Weltzin, director, announced today.

Decked in a cover depicting grasses of Idaho and a bird singing its summer song, the 40-page catalog provides information on courses and activities for the coming session which starts June 17 and ends August 9.

"The regular term is eight weeks and offers to the student a schedule of full-length semester courses at full credit," Dean Weltzin said. "For those who must limit their attendance to shorter periods, a number of short courses and workshops are available."

Both graduate and undergraduate work is offered in Summer School courses in over 40 departments in five colleges of the University. Work in the field of education is particularly extensive as a large portion of summer students are teachers or school administrators.

Job Opportunities

Wednesday — Representatives of the Washington State Personnel Board and several state government departments will interview students from 3-4 p.m. at the Placement Service Office.

Student Abandons Extinguishers In Auto

An Idaho professor is trying to rid himself of two fire extinguishers left in his car by a student at the University.

Harry Harmsworth, sociology professor, was returning from Lewiston Saturday when he stopped to pick up a rider at the junction that separates the Pullman road from the Moscow highway. The man had parked his car on the side of the road and told Harmsworth it was cheaper to hitch a ride.

During the course of the ride the man did not give his name, but mentioned he lived in a hall on campus. When Harmsworth got home he found the extinguishers in the back seat of his car.

"The man may pick the extinguishers up at TC2-118. Harmsworth said, "I suppose he wanted them for protection in case there happened to be another fire."

Second Recruiting Tour Leaves Wed.

Two faculty members and two students will leave Wednesday on the second of four planned recruitment tours to Idaho's high schools. The tour will cover twelve schools in the state and return to northern Idaho March 1.

Taking part in the tour will be Dr. Don Marshall, associate dean of agriculture; Miss Marian Frykman, assistant professor of music; John Thorbeck, former executive board member; and Sue McMahon, president of AWS and Gamma Phi Beta sorority.

Cities visited by the tour, which is designed to inform prospective college students of the advantages which their state university offers, include Twin Falls, Jerome, Minidoka, Burley, Malad, Preston, Blackfoot, Idaho Falls, Rigby, Rexburg, Salmon and Kellogg.

LOST & FOUND

LOST: Parker "51" pen, maroon and silver, Sally Beattie, Delta Gamma, 2-1117.
LOST: One pair of glasses, maroon glass case. Reward. George Patton, Upham Hall, 2-9232.

Conclave Trip Contest Prize

An expense paid trip to the Young Republican National Convention in Washington, D.C., on June 1922 may be the prize for some young Idaho resident, according to plans just announced by the Young Republican National Federation for a nation-wide Essay Contest.

The contest is open to all American citizens who are between the age of 16 and 23, as of Dec. 31, 1957. The subject for the essay is "The Republican Party's Attraction to Youth" and entries are limited to 300 words or less.

All entries must be submitted by April 15, 1957, to the Idaho Federation of Young Republicans, P. O. Box 2267, Boise, Idaho. A prize winning essay will be chosen by the Idaho Young Republican organization, and the national winner will be chosen from the prize winners of the various states. The National prize winning essay will be selected by a committee of prominent Republican leaders under the supervision of the Young Republican National Chairman, Charles K. McWhorter. Essays will be judged on the basis of clarity of thought, originality, and interest.

Entry blanks can be obtained by writing John E. Martin, Public Relations Chairman, P. O. Box 2267, Boise, Idaho.

A sailor was given a two hour pass to see his wife. He returned to his ship 6 hours late. The captain questioned him. "It took six hours for my uniform to dry," the sailor said.

"Six hours for your uniform to dry?" the captain roared.

"Yes," the sailor explained, "My wife was in the bathtub when I arrived."

GRILL CAFE

Good Chinese and American Food Right Here in Town!
214 South Main
Phone 2-6971

GRAD HEADS INFANTRY SCHOOL
Col. Dured E. Townsend last week was named successor to Col. Thomas E. Beck as deputy assistant commandant for combat developments of the U. S. Army Infantry School at Fort Benning, Ga. Col. Townsend attended Idaho before entering the Army in 1934.

New recipe for honeymoon salad: Lettuce alone.
Stone Age Lover's Slogan: I came, I saw, I conked her.

HERE ARE THIS WEEK'S TIE-BREAKERS IN OLD GOLD'S TANGLE SCHOOLS PUZZLES

TIE-BREAKING PUZZLE NO. 4

SAPNS
LINS
VNS
NBEY

CLUE: Benjamin Franklin participated in the founding of this school. Later, the first university medical school in the country was established here.
CLUE: This New England university was chartered in 1863. A theological seminary, founded in 1839, was its forerunner, and was absorbed as the university's first department.

ANSWER 1: _____
ANSWER 2: _____
Name: _____
Address: _____
City: _____ State: _____
College: _____

TIE-BREAKING PUZZLE NO. 5

S
VAVV
R
LDRN

CLUE: This Catholic university for men, conducted by Jesuit Fathers, is located in a town founded as a mission in 1777. The university was opened in 1851.
CLUE: This women's college, founded in 1879, is affiliated with a famous university for men. It is named to honor an early benefactor of the men's university.

ANSWER 1: _____
ANSWER 2: _____
Name: _____
Address: _____
City: _____ State: _____
College: _____

HOLD UNTIL YOU HAVE COMPLETED ALL EIGHT TIE-BREAKERS


All participants who completed the initial set of twenty-four puzzles correctly are required to solve a series of eight tie-breakers, in order to compete for the prizes in the tie. Tie-breakers four and five are published herein and the remaining three puzzles will appear in successive issues.

Remember—first prize is a TOUR FOR TWO AROUND THE WORLD—or \$5,000 cash . . . and there are 85 other valuable prizes now tied for.

TRY TODAY'S OLD GOLDS

No other cigarette can match the taste of today's Old Golds.

Regulars—Kings—or Filters . . . they taste terrific . . . thanks to Old Gold's nature-ripened tobaccos . . . so rich, so light, so golden bright. Buy A Carton Today!



Copyright 1957 Harry H. Hollister



"What's it like to be" A MANUFACTURING ENGINEER AT IBM?"

Four years ago, Yale senior Lee Baker asked himself this question. Today, as a Product Control Engineer in IBM Manufacturing Engineering, Lee reviews his experience and gives some pointers that may be helpful to you in taking the first, most important step in your engineering career.

"It's tough," Lee sympathizes, "for a college senior to feel confident about choosing a job. For four years he's been trained to be critical and deliberate about making decisions. Now, faced with the biggest decision of all, he has only a few months in which to attend job interviews, separate the facts from the propaganda, and select a company—not to mention passing exams and graduating at the same time."

Lee, with a B.S. in Industrial Administration, came to IBM in 1953. Starting as a Technical Engineer in Production Control, he was immediately assigned to the General Manufacturing Education program—a



Designing a paperwork system

10-month course with rotating assignments in all phases of the work—manufacturing, purchasing, production. In addition to four weeks of formal classroom study, he also spent two in the Boston Sales Office, calling on accounts with the IBM salesmen.

Lee's career was temporarily interrupted by a two-year hitch with the Air Force in Korea. Back at IBM in 1955, he has since been promoted to Production Control Engineer. His present job is to design paperwork systems to insure a smooth flow of work through the plant where the famous IBM electronic computers are manufactured. "It takes creative engineering ability to design these systems," says Lee, "and it takes administrative ability to 'sell' a system to higher management and make it stick."

How to select an employer

To the college senior faced with a job decision, Lee has this to say: "Pick your employer by this simple test: 'Is the company expanding fast enough to provide adequate scope for your talents and ambitions? Is it interested in your long-range management development? Will it treat



"Selling" the system

you as an individual and match your abilities with the most challenging assignments?"

For his part, Lee feels IBM has met this test. Since 1953, he has seen new plants open, dozens of new products evolve, hundreds of new management positions created. Greater authority, responsibility and reward have come his way. And he knows they will continue, for IBM sales



Recognition of individual merit

What's "life" like at IBM?

At IBM, Poughkeepsie, Lee lives a "full life." He belongs to a local sports car group, drives an Austin Healy. He skis at Bromley. He is a member of the IBM Footlighters and a local drama workshop. At present, he shares an apartment with two other engineers and a "medium-f" set, but plans to marry "the girl next door" (in hometown Hamburg, Conn.), in the very near future. In this connection, Lee advises seniors to pay special attention to company benefits. "They may seem like a yawning matter when you're single, but they mean a lot when you assume responsibilities. IBM's are the best I know."



Lee lives a full life

IBM hopes that this message will help to give you some idea of what it's like to work in Manufacturing Engineering at IBM. There are equal opportunities for E.E.'s, M.E.'s, physicists, mathematicians and Liberal Arts majors in IBM's many divisions—Research, Product Development, Sales and Technical Services. Why not drop in and discuss IBM with your Placement Director? He can supply our latest brochure and tell you when IBM will next interview on your campus. Meanwhile, our Manager of Engineering Recruitment, Mr. R. A. Whitaker, will be happy to answer your questions. Just write him at IBM, Room 0600, 590 Madison Avenue, New York 22, N. Y.



VANDALS FALL TO CAL BEARS TWICE

Simmons Breaks Record; OSC Here This Weeknd

Idaho's Vandals returned Sunday from a ten day trip in California, after losing four games, with the only consolation that guard Gary Simmons had made 26 consecutive free throws for a new conference record.

The Idaho squad, which began work yesterday for the Oregon State series here this weekend, found conference leading California's full court press too good as they dropped into lopsided contests to the Bears Friday and Saturday.

As the Vandals prepare for Coach Slat's Gill's Beavers, Idaho and the Beavers both need to win the weekend games. Oregon State has a 2 and 8 conference record and the Vandals stand at 2 and 10. The loser could well drop permanently to the conference cellar.

Bright Spot
Guard Gary Simmons was the only bright spot of the whole California trip as he returned to the lineup against USC and got seven consecutive free throws. Against California the little guard got eight for eight Friday night and sank nine before missing his tenth and last shot Saturday.

The total of 24 consecutive free throws added to two he dropped in at the close of last season against WSC gave him a total of 26 to break a PCC record. Simmons' former teammate, Bill Baucher of Idaho, had 25 straight free throws last year to hold the record.

California showed real championship caliber as they built up an early edge over the Vandals Friday night to romp to a 91 to 54 win. Led by a tight full court press staged by guards Earl Robinson and Gage Arrillaga the Bears gained the edge by repeated stealing the ball from confused Vandals.

The conference leaders held a 45-29 half time lead and led by the scoring of Larry Friend with 20 points widened the lead in the second half as Coach Harlan Hodges' two platoon system still failed to stop the red-hot Bears.

Saturday Hodges failed to use two separate teams for the first time this season, but still couldn't beat the Bears as they tallied a 71-56 score.

Bothered again by a full court press, the Vandals trailed by 18 points at the half, and out-scored the Bears in the second half. Simmons led the game scoring with 21 points, his high since he has returned to the lineup.

Whaylen Coleman playing forward had a good night as he got 13 points and held high-scoring Friend to 15.

Idaho	G	F	P	T
Jorgenson f	0	0-0	2	0
Damiano f	3	0-0	4	6
Branon f	3	0-0	5	6
McEwen c	0	0-0	3	0
Fretzel c	1	0-0	2	2
Coleman g	1	0-0	2	2
Simmons g	4	8-8	2	18
Wilson g	3	5-7	3	11
Thompson g	0	0-1	3	0
Schaffer g	2	7-8	3	11
Sather g	0	0-0	0	0
Totals	17	20-25	29	54

California	G	F	P	T
Friend f	4	12-14	2	20
McKean f	3	4-4	0	10
Crout f	4	4-6	0	12
Kapp f	4	1-2	1	9
Dalton f	0	0-0	0	0
Asplund c	4	7-8	0	15
Hagler c	1	0-2	0	2
Sterling c	1	0-0	1	2
Arrillaga g	1	0-0	2	2
Robinson g	3	0-3	1	6
Buch g	1	5-6	2	7
Diaz g	2	2-4	2	6
Bertelman g	0	0-0	1	0
Totals	28	35-49	13	91

Idaho	G	F	P	T
Idaho	29	25-54		
Cal	45	46-91		

Idaho (56)	FG	FT	PF	TP
Damiano, f	2	3-4	4	7
Coleman, f	3	3-5	4	13
Jorgenson, f	0	1-1	1	1
Branon, f	1	0-1	5	2
McEwen, c	0	0-0	3	0
Fretzel, c	0	3-5	3	3

California	FG	FT	PF	TP
Friend, f	4	12-14	2	20
McKean, f	3	4-4	0	10
Crout, f	4	4-6	0	12
Kapp, f	4	1-2	1	9
Dalton, f	0	0-0	0	0
Asplund, c	4	7-8	0	15
Hagler, c	1	0-2	0	2
Sterling, c	1	0-0	1	2
Arrillaga, g	1	0-0	2	2
Robinson, g	3	0-3	1	6
Buch, g	1	5-6	2	7
Diaz, g	2	2-4	2	6
Bertelman, g	0	0-0	1	0
Totals	28	35-49	13	91

Idaho	FG	FT	PF	TP
Idaho	29	25-54		
Cal	45	46-91		

Your Photo is a Desirable Gift

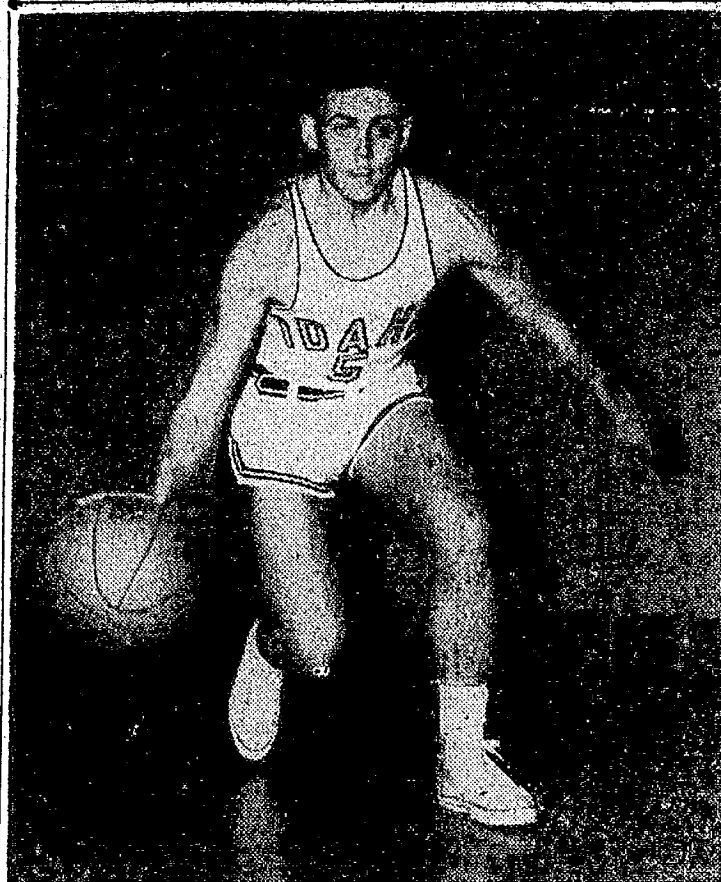
RUDY
DIAL 2-7011

Foster Still Undecided On Pro Future

"I have definitely decided to play one or two seasons of professional football, but have not yet decided just where I will play," Idaho's Dick Foster said yesterday.

Foster, standout tackle during the Vandals' 1956 football season, has received offers from both the Washington Redskins of the National Football League, and the Vancouver, B. C., Lions.

"I probably will play with one of the two teams but am not at liberty to say at this time," Foster explained.



Vandal Guard Gary Simmons, who returned to the Idaho starting lineup against USC, and hit 26 straight free throws against the Trojans and California to break the PCC record of 24, set by Idaho's Bill Baucher last year.

SPORCAS/BORD

by Dean H. Judd

The Pacific Coast Conference basketball race has developed into a three way race that is due to break wide open the next two weekends.

The conference leader, California, holds a half game lead over UCLA and a game edge over Washington. The only roadblocks that may give the Bears trouble in their bid for their first championship since 1946 are games with both the Huskies and UCLA.

The Bears meet the Huskies this weekend and then square off with their cousins from Los Angeles the following Friday and Saturday. If California can retain their hold on the top spot after those four games they well deserve the crown!

If it means anything, Idaho's showings against the three leaders could be a good indication of how these crucial contests may go. The Vandals, of course, have lost to all three teams.

UCLA could barely manage to squeeze out two one point wins over Idaho, and the Vandals were without the services of Gary Simmons. Washington ran up wins by margins of 22 and 19 points over the Vandals the following weekend while Simmons still wasn't around.

On the other hand California took on a Vandal team that was supposedly at full strength and won games by much larger margins. Also, the Bears were playing without two of their starters.

There are two facts, the Bears should go on to win the championship and this writer wouldn't be too surprised if they would be back at full strength.

Wilson, g	FG	FT	PF	TP
Wilson, g	1	5-9	3	7
Simmons, g	4	9-10	0	21
Totals	16	24-36	20	56

California (71)	FG	FT	PF	TP
Friend, f	4	12-14	2	20
McKean, f	3	4-4	0	10
Crout, f	4	4-6	0	12
Kapp, f	4	1-2	1	9
Asplund, c	4	7-8	0	15
Hagler, c	1	0-2	0	2
Sterling, c	1	0-0	1	2
Arrillaga, g	1	0-0	2	2
Robinson, g	3	0-3	1	6
Buch, g	1	5-6	2	7
Diaz, g	2	2-4	2	6
Bertelman, g	0	0-0	1	0
Totals	28	35-49	13	91

Kenworthy TONIGHT & WEDNESDAY "MR. CORY"

THURSDAY - FRIDAY - SATURDAY
Forest TUCKER - Mari WALLACE
TUCKER - BLANCHARD - FORD
STAGECOACH TO FURY

NUART LAST TIME TONIGHT "THE BOSS"
WEDNESDAY THRU SATURDAY
THREE VIOLENT PEOPLE
CHARLTON HESTON - ANNE BAXTER - GILBERT ROLAND
VISTAVISION

Kappa Sigs-Campus Club 1 To Meet For 'A' Cage Crown

Kappa Sigma and Campus Club 1 won spots in the intramural "A" basketball University Championship game at 4:45 p.m. on Court 3 Wednesday by taking narrow victories over Tau Kappa Epsilon and Chrisman Hall 2 yesterday afternoon.

The Kappa Sigs edged the Tekes, top-rated in League I, 25-24, and Campus 1 slipped past Chrisman 2, 24-22.

Jim Bruya led the Kappa Sigs with eight points, while Larry Aldrich kept the Tekes in the game up to the final buzzer with eight. Ted Leach paced Campus 1 in their winning effort with 10 points, while John Liveious hit 13 in a mighty display for Chrisman's losing cause. Rollie Williams, Chrisman center, was held to three points.

In other action yesterday, Lindley Hall 2 took a forfeit from Lindley 1 for third place in the independent division, Willis Sweet 1 took a forfeit from Pine 1 for third place in League III, Upham 1 downed Chrisman 1, 31-22, for fifth place in League III, and Gault 1 edged Idaho Club 2 26-25, for 13th place in the independent division.

Playoffs continue through Wednesday, when the "A" basketball season will be climaxed by the clash for the championship between the Kappa Sigs and Campus Club.

Intramural "B" basketball play is slated to begin Thursday.

In third day intramural bowling action Thursday, Gary Ringert, Alpha Tau Omega, rolled the day's high game with a 203 average. Lee Ness of Idaho Club rolled the highest series, 519. The only other bowler over 500 was Ron Goodwin, Delta Chi, with 503.

Bowling Results
Thursday Matches—
WSH-DC 2-2
TMA def. DSP 4-0
ATO def. SN 3-1
IC def. PH 4-0

Today's "A" Basketball Schedule (Playoffs)—
4:00 p.m.
Court 1—PGD-PDT 3rd-4th places
Divisional
Court 2—BTP-SAE 5th-6th places
Divisional
Court 3—DC-LDS 11th-12th places
Divisional
4:45 p.m.
Court 1—SC-ATO 9th-10th places
Divisional
Court 2—SN-DTD 7th-8th places
Divisional
Court 3—TMA-PKT 13th-14th places
Divisional

Tomorrow's Playoff Schedule
4:00 p.m.
Court 1—GH2-WSH1 5th-6th places
Divisional
Court 2—UH2-PH1 7th-8th places
Divisional
Court 3—CC2-UH1 9th-10th places
Divisional
4:45 p.m.
Court 3—KS-CCI University championship.

California split to complete weekend action.

The Trojans put on a strong second half scoring drive to edge past the Cougars Friday, but little Jim Ross hit 18 points to pace WSC to a 70-64 win Saturday.

WSC scoring leader, Larry Beck collected four fouls in the first half and sat out much of the last half, but still managed to score 15 points.

The rookie was driving the garbage wagon through the army camp when one of the mules fell over dead. Jumping from the wagon, he ran to where the sergeant was standing. "Hey, Sarge," he called, "my mule just fell dead."

"Well, why don't you bury him?" asked the sergeant. "You know how to dig a hole don't you?"

"Yeah," said the indignant rookie, "but I thought it only right to notify the next of kin first."

Big Three Win; Still Top PCC

PACIFIC COAST CONFERENCE STANDINGS	W	L	Pct.	Pts	Opp.
California	10	0	1.000	674	542
UCLA	9	1	.900	733	627
Washington	10	2	.833	861	762
Stanford	6	6	.500	763	765
Southern Cal	4	4	.500	563	567
Wash. State	4	8	.333	778	861
Oregon State	2	8	.200	543	612
Idaho	2	10	.167	756	836
Oregon	1	9	.100	580	679

California, UCLA, and Washington, the elite of the Pacific Coast Conference, kept rolling in their bids for 1956-57 basketball honors by sweeping weekend games.

California kept a spotless record intact by dumping Idaho twice, UCLA had no trouble with Stanford's Indians Friday and Saturday, and Washington got past Oregon twice.

The Bears now top the PCC with a 10-0 record, followed by the Bruins with 9-1 and Washington with 10-2.

The Huskies were the only team among the three which came close to losing a decision. Oregon's cellar-dwelling Ducks battled into overtime before falling, 65-63, Saturday.

The Ducks' Charlie Franklin, a brilliant forward, kept his team in the contest all the way with 29 points. Big hook-shooting center Bruno Boim dropped in 22 for Washington.

Washington State and Southern California split to complete weekend action.

The Trojans put on a strong second half scoring drive to edge past the Cougars Friday, but little Jim Ross hit 18 points to pace WSC to a 70-64 win Saturday.

WSC scoring leader, Larry Beck collected four fouls in the first half and sat out much of the last half, but still managed to score 15 points.

The rookie was driving the garbage wagon through the army camp when one of the mules fell over dead. Jumping from the wagon, he ran to where the sergeant was standing. "Hey, Sarge," he called, "my mule just fell dead."

"Well, why don't you bury him?" asked the sergeant. "You know how to dig a hole don't you?"

"Yeah," said the indignant rookie, "but I thought it only right to notify the next of kin first."

Washington State and Southern California split to complete weekend action.

The Trojans put on a strong second half scoring drive to edge past the Cougars Friday, but little Jim Ross hit 18 points to pace WSC to a 70-64 win Saturday.

WSC scoring leader, Larry Beck collected four fouls in the first half and sat out much of the last half, but still managed to score 15 points.

The rookie was driving the garbage wagon through the army camp when one of the mules fell over dead. Jumping from the wagon, he ran to where the sergeant was standing. "Hey, Sarge," he called, "my mule just fell dead."

"Well, why don't you bury him?" asked the sergeant. "You know how to dig a hole don't you?"

"Yeah," said the indignant rookie, "but I thought it only right to notify the next of kin first."

Swimmers Fall To OSC; Set Two Weekend Meets

Oregon State's Beavers took the 1957 Northern Division dual meet championship Saturday at Corvallis with an easy 72-14 victory over Idaho.

The Beavers set six new OSC-Idaho meet records in sweeping to firsts in every event on the ten-match slate.

"Oregon State was by far the strongest team we have met this year," Vandal swimmer coach Eric Kirkland said yesterday, "and in my opinion the most powerful any of my squads has ever met."

Weekend Meets
Idaho attempts to get back on the victory road today at 3:30 in a meet with the Eastern Washington Savages at Memorial Gymnasium pool.

Saturday, Kirkland's swimmers tangle with the Washington State College Cougars here at 2 p.m.

The Vandals scored decisive victories over both teams earlier this year.

The meets with EWEC and WSC will be the last of the year for the Idaho swimmers who travel to Corvallis March 1 and 2 for the Northern Division meet.

Three Praised
Kirkland praised his swimmers for their effort in the OSC meet and singled out Dennis Jensen, second in the 50 freestyle, Kim Larsen, second in the 220 freestyle, and Leonard Lawr, second in the 100 freestyle, for their work.

Coach Art Koski's Beavers rolled to their third straight Northern Division victory of the season in the Idaho meet, having earlier beaten Washington and WSC. The Beavers piled up 196 points in the three meets and limited opponents to 62.

OSC-Idaho Summary
400 medley relay—Won by OSC; second, Idaho. Time 4:18.0.
220 freestyle—Won by Dale Sweett, OSC, second, Larsen, Idaho. Time 2:24.4 (new meet record).
50 freestyle—Won by Dick Schulzke, OSC; second, Jensen, Idaho. Time—24.5.

200 butterfly—Won by John Welch, OSC; second, Bob Coyner, OSC. Time—2:35.5 (new meet record).
Diving—Won by Jerry Marti, OSC; second, Mike Clark, OSC.

100 freestyle—Won by Jim Hubbard, OSC; second, Lawr, Idaho. Time—56.2.
200 backstroke—Won by Frank Wilson, OSC; second, Arlen McDonald, OSC. Time—2:32.1 (new meet record).

440 freestyle—Won by Ben Jensen, OSC; second, Art Welch, OSC. Time—5:16.5 (new meet record).
200 breast stroke—Won by Wally Lund, OSC; second, Greg Gill, OSC. Time—2:37.7 (new meet record).
400 freestyle relay—Won by OSC; second, Idaho. Time—3:47.2 (new meet record.)

Per Windju, Eirik Berggren, and Viggo Frieling accompanied Cammack to Leavenworth, but were ineligible to participate because all three are Norwegian and the combined was for Americans only.

The winner of the meet is qualified to turn out for the United States team which will compete in the Federation International Ski meet held next year in one of the Scandinavian countries.

The University of Idaho ski team will participate in a WSC sponsored meet this weekend at the Chewelah Ski Area.

Winless Freshmen Meet Spokane 'Y'

Idaho's freshmen swimmers will be looking for their first win of the season Friday when they host the Spokane YMCA swimmer at Memorial Gymnasium pool.

The Vandal first-year Mermen were beaten in their first two 1957 meets by the Eastern Washington College and Washington State freshmen.

The rookie was driving the garbage wagon through the army camp when one of the mules fell over dead. Jumping from the wagon, he ran to where the sergeant was standing. "Hey, Sarge," he called, "my mule just fell dead."

"Well, why don't you bury him?" asked the sergeant. "You know how to dig a hole don't you?"

"Yeah," said the indignant rookie, "but I thought it only right to notify the next of kin first."

Washington State and Southern California split to complete weekend action.

The Trojans put on a strong second half scoring drive to edge past the Cougars Friday, but little Jim Ross hit 18 points to pace WSC to a 70-64 win Saturday.

WSC scoring leader, Larry Beck collected four fouls in the first half and sat out much of the last half, but still managed to score 15 points.

The rookie was driving the garbage wagon through the army camp when one of the mules fell over dead. Jumping from the wagon, he ran to where the sergeant was standing. "Hey, Sarge," he called, "my mule just fell dead."

"Well, why don't you bury him?" asked the sergeant. "You know how to dig a hole don't you?"

"Yeah," said the indignant rookie, "but I thought it only right to notify the next of kin first."

Washington State and Southern California split to complete weekend action.

The Trojans put on a strong second half scoring drive to edge past the Cougars Friday, but little Jim Ross hit 18 points to pace WSC to a 70-64 win Saturday.

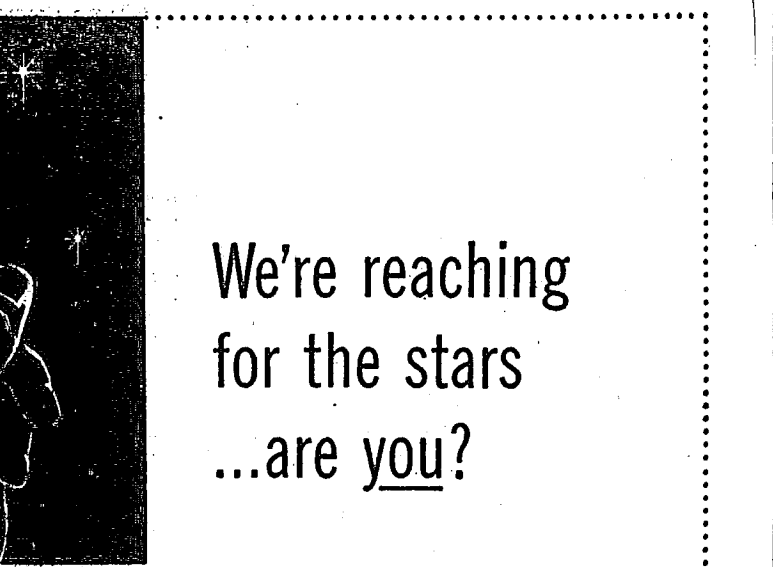
WSC scoring leader, Larry Beck collected four fouls in the first half and sat out much of the last half, but still managed to score 15 points.

The rookie was driving the garbage wagon through the army camp when one of the mules fell over dead. Jumping from the wagon, he ran to where the sergeant was standing. "Hey, Sarge," he called, "my mule just fell dead."

"Well, why don't you bury him?" asked the sergeant. "You know how to dig a hole don't you?"

"Yeah," said the indignant rookie, "but I thought it only right to notify the next of kin first."

Washington State and Southern California split to complete weekend action.



We're reaching for the stars...are you?

You might call us "talent scouts." Certainly we're seeking talented young men—the kind that will star on our teams of engineers and scientists at Convair. Here is opportunity. Because Convair is engaged in the widest diversity of aircraft and missile projects in the U.S. today.

Talk with the men from Convair (dates below). Let them explain the many advantages of working at Convair...of living in beautiful San Diego.

CONVAIR SAN DIEGO
Plan your career with America's top air-frame builder. Here you'll find a wide range of opportunities for the graduate engineer. You'll work with a congenial group in the Company famous for such advanced aircraft as the 880—world's fastest commercial jet airliner; F-102A—first supersonic interceptor; Seadart—first water-based jet fighter; and long-range research on nuclear aircraft. There is no ceiling on your chances to advance and make a name for yourself at Convair San Diego.

CONVAIR-ASTRONAUTICS
During 1957, groups of outstanding scientists and engineers, together with hand-picked young graduates, will occupy the new \$40,000,000 Convair-Astronautics facility. Here, in a unique environment, they will develop and design ATLAS—an Air Force top-priority Intercontinental Ballistic Missile (ICBM)—the forerunner of travel into space. You may qualify for a position with Convair-Astronautics' ICBM project—one of the most important of its kind in the United States.

Graduate and undergraduate students majoring in
AERONAUTICAL, ELECTRICAL, MECHANICAL, NUCLEAR, CIVIL, CHEMICAL ENGINEERING
plus MATHEMATICS, PHYSICS, METALLURGY
our Convair representatives will be conducting
INTERVIEWS: February 21
HOURS: 9 a.m. to 4 p.m.

Ask your Placement Office for appointment
CONVAIR CO
A DIVISION OF GENERAL DYNAMICS CORPORATION
3302 PACIFIC HIGHWAY • SAN DIEGO, CALIFORNIA

Yardley products for America are created in England and finished in the U.S.A. from the original English formulae, combining imported and domestic ingredients. 620 Fifth Ave., N.Y.C.

By appointment purveyors of soap to the late King George VI, Yardley & Co., Ltd., London