

The Idaho Argonaut

VOL. 61, NO. 50

THE IDAHO ARGONAUT, Official Publication of the ASUI

TUESDAY, APRIL 30, 1957

Campus Gets Spring Cleaning Saturday

Rakes, brooms, shovels and manpower will be put to work polishing up the campus Saturday morning when Annual Campus Clean-up gets underway at 8:30 a.m. Ernie Davenport will be chairman of the project.

The clean-up, sponsored by Blue Key, is held each year to clear trash and refuse from the campus and sprucing it up in general before Mother's Day weekend.

Davenport announced that clean-up will be set up almost the same as in former years. Living groups will again be assigned definite areas to clean. All refuse will be placed in street gutters where trucks manned by building and grounds employees and Blue Key members will pick it up.

er might possibly effect clean-up, but that it wasn't probable. "In case of a terrific rainstorm or snowstorm, no organized clean-up will be held," Davenport said. "If the rain is just slight it will go on as scheduled. In either case, trucks will be available to collect the trash."

Assignments
Individual assignments for living groups will remain the same as last year, with Farm House, a new addition to the campus this year, taking care of the area around Kirtley Engineering Lab.

Other assignments will be—Delta Chi and Thetas—around respective houses and around the Nest, the Perch and Campus Christian Center. Phi Delt—area around the house and along the street in front of the house including vacant lot.

Hays and Forney—the area immediately around halls and the area around Home Ec building. Gamma Phi and Ethel Steel—the area around their living groups and the area around the tennis courts.

Tekes—the area around the house and that around the Music building. Kappa Sig—area around house and a detail of men for the Ad lawn. Fiji—area around house and Infirmary. Sig Alph and LDS—area around living groups and along Deakin Street from Theta corner to Sweet Avenue. A detail of men for the Ad lawn from SAE. Phi Tau and Delta Sig—area around houses and along Deakin to Sixth Street.

ATO, Pi Phi
Alpha Tau and Pi Phi—area around house and around SUB and SUB parking lot. Also on Idaho street from Deakin to Elm. Sigma Nu and Alpha Chi—area around houses and along Elm street from Idaho Avenue through SUB alley. Also Sigma Nu detail for the Gym area. Beta—area around house and along Idaho Avenue from Elm to Ash street. Also a detail for the Arboretum area. Tri-Delt and Alpha Phi—around houses, Canterbury Houses and along Elm to Sixth Street. Lindley—area around dorm and Science Hall and Geology building.

Kappa and Sigma Chi—area around houses and around Home Management and music practice hall. Deltas—area around house and Forestry building. Willis Sweet—area around all, UCB, Dairy Science, Agronomy Building, and Post Office. Chrisman—area around hall and women's playing field. Idaho Club—area around hall, Navy Building and Engineering building.

The GOLDEN FLEECE by Jason

The mounting costs of providing a college education to the rapidly increasing number of students in America has caused a nation-wide crisis in higher education.

And along with larger appropriations to state universities has come the trend to increase tuition and registration fees.

Idaho has felt an increase in tuition paid by non-resident students and with this new trend, registration fees increases may be soon directed. Students who live in Idaho pay no \$75.00 tuition per semester.

Insurance fees, part of a semester registration fee, have been increased out of necessity, non-resident fees (tuition) were increased \$50 per semester to keep pace.

The state constitution directs that no student who resides in the state pay a tuition fee as such. All students pay the same registration fee which last two semesters was \$59. Idaho is one of three universities in the nation that does not include tuition for residents.

The University sets no quota upon out of state students, merely requires that the student has graduated in the upper half of his or her class. Other schools receive income through both resident and non-resident tuition to steer into the general operating funds. The out of state enrollment figures at Idaho usually run slightly above 20 per cent of the total enrollees.

You will find listed below, the tuition scales of American University and the breakdown of fees that we pay each semester.

Second To Low
Note that Idaho is relatively low in non-resident fees. According to Gale L. Mix, general manager of the ASUI, Idaho is the second lowest in the country to North Dakota in the amount paid as a registration fee.

The \$20 building fee paid in the \$59 fee includes \$10 for Student Facilities Fee, \$7.50 for retirement of bonds upon the present Student Union building and \$2.50 for infirmary construction.

In the future, these fees will undoubtedly increase with the expansion of the SUB. Students are now paying for proposed improvements to the infirmary and its possible expansion. A flu epidemic illustrated this winter that the present health facilities are inadequate.

Present plans call for a hike in student fees under the building category to pay for new bonds which will be sold on the SUB expansion. The increase has been proposed of \$2.50 per semester at present and another \$2.50 increase when the expansion is completed. This would increase the fee to \$64.50 per semester. This is based on the recent increase from \$1.50 to \$2.00 on the rates for student insurance.

The increase in fees and tuition was and is inevitable in the light of the increased costs of providing an education comparable to other schools in this part of the country. Idaho is now keeping pace with its limited and progressing building program and has more money available to improve and satisfy its staff.

Because of the influx of young

Rotcies Will Pick One



Men from all three ROTC units will vote this week on one of these three lovelies to reign over their Ball Saturday. Contenders are Tonia Peterson, Pi Phi; Pat Riley, Gamma Phi and Niki Hull, Theta.

Group Displays, Coronation To Highlight Military Ball

Military displays by each of the three members of the armed services, Air Force, Army and Navy, will be one of the highlights of the annual Military Ball to be held Saturday. Sponsored by Scabbard and Blade, military honorary, the dance is open to civilians as well as members of the ROTC.

Finalists for Military Ball Queen are Pat Riley, Gamma Phi, Tonia Peterson, Pi Phi and Niki Hull, Theta. During intermission, the queen will be led through a sabre arch and will be crowned by Napier Smith, president of Scabbard and Blade.

After the crowning of the queen, the Air Force and Army choirs will present several musical selections.

Dress for the affair will be formal uniform for military personnel and suits for civilians. Tickets will be sold at the door by members of Scabbard and Blade for \$1.50 a couple. Gary Dossett's band will provide music for dancing.

Chairman of committees are John Thornock, trophies; Floyd Soderstrom, program; Ken Jenkins, decorations; Paul Cunningham, band; Richard Neese, Sabre Arch; Jim Buckley, entertainment; Gerald Matson, tickets and invitations, and Leonard Roberts, queen.

Invitations to the 1957 Military Ball have been sent to the professors of military science at the University of Idaho and Washington State College.

Contestants
A blonde, a brunette and a bronze-tone are vying for the

queen title. Members of the three ROTC units will do their final voting this week.

Blonde finalist is Pat Riley, Boise. She is a freshman and a member of Gamma Phi. Miss Riley is five feet six inches tall and has blue-green eyes. Interior decorations is her field of study and she likes sewing, skiing and swimming.

Aviation and the desire to be-

come an airline hostess is the interest of Tonia Peterson, a five feet four inch brunette with green eyes. She is a sophomore from Boise majoring in education and is a member of Pi Beta Phi.

Niki Hull, Kappa Alpha Theta, is from Caldwell and is majoring in radio-television. She is a five foot three inch freshman with blue eyes and bronze-toned hair.

Mixed, Men's Divisions To Hold Song Fest Auditions

Auditions will be held Friday and Saturday for the mixed division and men's groups who will sing in the annual Song Fest, Joan Foster, co-chairman of the event, said today. They will be held from 4 to 5 p.m. Friday and 2 to 5 p.m. Saturday, she said.

An activity-filled Mother's Day weekend, which includes the traditional May Fete, has the musical program scheduled for Sunday, May 12, in Memorial Gymnasium. Fifteen groups will sing during the program.

The Darrell Callihan Memorial Trophies will be presented as traveling trophies to the winning groups of the men's and women's division and two other traveling cups will go to the winning two living groups in the mixed division. Sigma Alpha Iota and Phi Mu Alpha, sponsoring musical honoraries, will also give permanent cups, one for each of the four winning living groups.

Bob Whipple, co-chairman of Song

Fest, said judges were chosen by a committee for the event and the judges will base their selection on presentation and quality of performance. Judging are Glen Lockery and LeRoy Bauer of the Idaho music department.

Bleachers Condemned
May Fete will be held on McLean Field May 11, Louise Cummins, chairman of the program, said earlier. Mrs. Cummins said bleachers formerly used on the Ad lawn, where the event has traditionally been held, had been condemned and could no longer be used. Chairs are not available in sufficient quantities.

Program for the affair will include crowning of May Queen Sue McMahon by Dave Maxey, newly elected ASUI president, a Spur Maypole dance, an Orchestra program, University Singers, presentation of WRA, IK, Alpha Lambda Delta and Ten Top Senior awards, announcement of new Spurs, and tapping for Silver Lance and Mortar Board members.

AGD Sorority Gets Okay To Colonize

Student-Faculty committee Friday approved a request from the Alpha Gamma Delta sorority to colonize on the Idaho campus. Pan Hellenic had previously given its approval.

Dean Louise Carter told the committee that the sorority, which has a chapter at WSC, will attempt to interest four girls in attending its national convention this summer and that they will form the nucleus for its colonization.

The sorority has 60 chapters, Dean Carter said. Chi Omega, which had expressed interest in colonizing here, later declined, she said.

In other action, the committee: Accepted changes in the Gault Hall constitution pertaining to room changes, dress at meals and student power to punish offenders. Tentatively recognized a new Amateur Radio club, pending discussion of its constitution.

VISIT ENGRAVERS
Four Gem staff heads returned Sunday from visiting Art Craft Engravers in Seattle. The students, Louise Cummins, Myrt Williamson, LaRene Newberry, and Kay Conrad, toured the plant and discussed deadlines for the Gem pictures. They left Thursday.

COMING EVENTS

- TODAY**
Vandal Riders, 7 p.m., conference room D.
IRC, 4:10 p.m., Pine Room, Election of officers.
IKs, 8 p.m., conference room A, Pledging.
- WEDNESDAY**
AWS, 7 p.m., conference room E.
Publications Board, 4 p.m., ASUI offices.
- THURSDAY**
TMA, 7 p.m., conference room E.
Animal Husbandry club, 7 p.m., Ag. Science.
Phi U, 7 p.m., Home Ec. building

Farm Youth Exchange Student Relates Six-Month Travel To Latin America

By JIM FLANIGAN

An Idaho man returned to the campus Friday after spending six months in the Republic of Colombia as a delegate for the International Farm Youth Exchange, and another University student plans to return by May 1, after studying agriculture methods in Nicaragua on the same program.

Dave Youmans, a junior ag major who was selected to represent IFYE in Colombia, said yesterday that Chan Atchley, a graduate student in agriculture at Idaho, would return to school after a brief visit with his family in Ashton.

During his tour of the Latin American country, Youmans lived among both the poor and rich farmers, working mostly with catlemen. He was administratively sponsored by the United States International Cooperations Administration and the Agriculture Society of Colombia. While Avianca Airlines of Colombia and the Olin-Matheson Chemical Corporation financed him.

"The purpose of my exchange was to promote international feelings, especially among families on the rural farms," Youmans said. He was selected by the International 4-H Club Foundation on the basis of 11 years work in 4-H clubs, living on a farm all of his life, and majoring in agriculture.

Leaves Moscow
Leaving Moscow on Oct. 6, Youmans landed in Medellin five days later. Twenty-two students throughout the United States took part in the same program in Latin America, but Harry Jones, an ag student at Clemson College in



DAVE YOUMANS

South Carolina, was the only other exchange student in Colombia.

Youmans was active in organizing 4-H Clubs in the Latin American country, but the popular farming organization for youth was known as 4-S there. "The 'S' carried the same meaning in Spanish as the English words, head, heart, hands, and health," Youmans said.

The Colombia 4-S Club works with young boys and girls on projects so that they may learn more scientific methods of agriculture in order to promote themselves and teach their parents and future children. Youmans moved every two weeks with semi-official cooperatives that handled a variety of farm products, and he had an opportunity to work with a large percentage of the Colombia youth.

"The rich farmers live very, very well," Youmans said, "while the poor people don't have much. The latter usually live on the farm while the rich man can afford to live in the cities and often does."

"Because of the lack of communication, the culture and customs vary to a great extent. The people accept you and want you to learn their language," Youmans said. He had a year of Spanish at the University, but learned most of it during his six month stay in Colombia, where he soon spoke the native tongue reasonably well.

Black and White Cultures
Youmans gave a vivid description of the country down south. "Colombia culture is a mixture of Indian and Spanish, but in the cities has a European influence chiefly from its Spanish conquerors. Compared to our way of life, it's as different as black and white."

"The Andes is divided into three regions, but it's still possible to go from the mountains to the tropics in a short duration of time. The highlands are cold and the lowlands warm."

"Music reflects the way of life and tells whether the people are happy or sad. The Negroes on the coast are happy, colorful people. All over the country close family ties can be found."

Fulbright Hits U.S. Policies In Red China

Sen. J. William Fulbright Friday morning reiterated his attacks on US foreign policy—especially concerning Red China—and again pushed for recognition of that country. The Arkansas Democrat addressed some 600 in his public events speech.

One-Act Plays Scheduled This Week On Stage

Working on an almost bare stage during rehearsals, student actors and student directors are preparing for the final drama department presentation of the year. A slate of three one-act plays written by Idahoans throughout the state is scheduled this Thursday and Friday on the University Auditorium stage.

Another series of one-act plays will follow May 8 and 9 in the University Hut, Jean Collette, director of dramatics, said today.

Three student directors, working in cooperation with Miss Collette, are drilling the first set of actors on their lines and cues for next week's performances. Miss Collette is just checking on each play and letting the student coaches handle the shows themselves.

"The Prisoner," a symbolical play, is directed by Jolene Williams; "Hell On Women," a historical comedy, is directed by Sue McMahon, and "I'll Dance at Your Wedding," a situation comedy, is directed by Charles Tovey.

An Idaho English professor, Bruce Woodford, wrote "The Prisoner," while "I'll Dance at Your Wedding" and "Hell On Women" were written by Jean Mizer, drama coach at Twin Falls high school. The three one-acts will receive their premiere on the Idaho campus.

Production crews for the entire slate of plays are Mary Ellen Bennett and Rosie Perrin, technical directors; Don Harris, lights; Dwight Patton, properties; Judy Provençal, publicity and costumes; Nancy Woods and Diane Kail, construction; Judy Hackler and Lucy Palmer, sound, and Gerri Williams, makeup.

Courdoroy's To Sing Pops At IFC Ball

The Courdoroy's, a popular singing quartet from the WSC campus, will be featured during the intermission of the Inter-Fraternity Council Ball, scheduled for May 10 in the main ballroom of the SUB, Jim Hawkins, chairman, said today.

Hawkins said IFC plans to make the dance semi-formal for the first time in the history of the annual event. Music for the dance will be furnished by the Dossetts, who will appear from 9 to 12 p.m.

Programs will be sold in place of tickets for \$1.50. They may be purchased from any member of IFC, Hawkins said.

120 Couples Attend Chinese Art Auction

A Chinese auction held last Friday evening in the Art Building was a great success, Sonjha Hoisath, chairman said yesterday. The profits of the auction go into the Scholarship and Loan Fund of the sponsoring Art Club.

Approximately 120 couples attended the program where they bid on pottery, paintings and watercolors, donated by students.

Dingel Vandaleers Prexy, Group Sings Thursday

Allyn Dingel, Fiji, yesterday was elected president of the Idaho Vandaleers as the group rehearsed for a special concert in Lewiston Thursday.

Jane Lange was elected secretary-treasurer; Joan Fisher, librarian; Marie Van Orman, public relations; Sunny Kinney and Neil Campbell, wardrobe chairmen.

The concert will be the last in the Lewis and Clark college series and will include music sung for the Vandaleer's spring concert tour and home concert this year. Featured artists will be accompanist Shirley Danielson Bucklin, the University Chamber Orchestra and selected soloists in both sacred and secular music favorites.

Remaining spring plans on the Vandaleer schedule include singing with the University Singers and the Idaho Symphony Orchestra in a program May 22.

Fulbright, who for several years has waged a virtual one-man campaign in the Senate for Red China's recognition, declared that the U.S. previously went to "great lengths" to cultivate the Chinese and then adopted an attitude of nonrecognition.

Idaho was one of a series of speech engagements the senator has been making across the country. In most of them he has attacked U. S. refusal to recognize Red China.

"Never before has there been such a concerted effort against the recognition of a country. There is something irrational about it," he said.

Should Reconsider
He indicated that if the U.S. would reconsider its attitude toward the Communist Chinese, "perhaps it would induce them to reform their ways."

The U. S. government, under both the Truman and Eisenhower administrations, has steadfastly refused to recognize the Chinese People's Republic.

Turning to India, Fulbright said that the recently-independent nation has been a "subjugated country."

"Sympathetic Attitude."
He said he thought the country, which under Prime Minister Nehru has maintained a strict neutralist attitude, should have a period of readjustment. He attacked criticism of Nehru and suggested a "very sympathetic attitude" toward India's position.

The State Department, he said, has forced India to join the arms race by supplying guns to next door Pakistan.

"The success of Indian democracy can be all-important in the outcome with the Communists," he said.

Fulbright cited a situation similar to India's in his critique of Near East policy.

Transition Difficult
"They are only recently independent countries," he said. "Transition is difficult."
"My criticism is that we have failed to recognize what was taking place there."

He said he thought "we neglected an opportunity" to play a role in the development and subsequent strong alliances with oil-rich Near and Middle East countries.

The U.S.'s sudden withdrawal of funds for construction of the Aswan Dam on Egypt's Nile River last year was "mismanagement," he said.

"Here's an example of mismanagement of opportunity," he charged.

More Aid
Further aid in development, research and long term loans might help the U.S. in the current Middle East crisis, he said.

"Raising the living standard might alleviate the situation," he said.

Following up that suggestion, Fulbright took exception to the State Department's "fiscal planning."
"There is no long-term planning or continuity in our loan program," he asserted. He said that government agencies set up loan appropriations with no view toward the future.

"The future is to the one who can conduct himself in the wisest manner and whose society is the toughest," he said.

Borah Purpose Is Peace

By DR. ROBERT HOSACK
War is a social problem. The Borah Foundation is devoted to promoting the study of the problem in order to help achieve a solution to what is perhaps the most vital question facing mankind today, namely, can we preserve our civilization in the face of the potential destruction contained in the practice of war among the states of the world? Through science man has made tremendous progress in controlling and mitigating the effect of natural disasters. Social scientists recognize that similar progress is possible in controlling social disasters. Social scientists recognize that similar progress is possible in controlling social disasters but these wars continue to present a threat to man's welfare which is as great as ever, perhaps worse than ever before.

No one familiar with the death and destruction caused by both World Wars, with the accompanying human suffering, or familiar with the huge expenditures which are today being demanded of the peoples in every major country for defense against possible attack, can deny that human welfare would be greatly advanced could social science provide a means to eliminate war from human conduct.

The benefactor who created the Borah Foundation, Mr. Salmon O. Levinson, recognizing the significance of the threat of war and believing that man could control this evil, proposed at the close of the first World War that the nations of the world outlaw war as a political method.

In this campaign he was assisted greatly by Idaho's great Senator, William E. Borah, and together they were largely responsible for the adoption by all the major states of the world of the Pact of Paris, or Kellogg-Briand Treaty. Signatories of this pact renounced war as an instrument of national policy. In honor of his friend and collaborator, Mr. Levinson created an endowment to be administered by the University of Idaho for the Outlawry of War. Despite the subsequent failure of the Pact of Paris to prevent another major war, this remains the basic purpose of the Borah Foundation. With great wisdom, however, Mr. Levinson allowed full freedom to the Foundation Trustees in selecting ways and means of accomplishing his objective.

Depression Halted Activity.
Because of the Depression, for years the income from the endowment did not permit any major activity but ten years ago a continuing program became possible and the conclusion of the second World War increased the obvious need for a more effective approach to the problem of eliminating war from the affairs of mankind. The Borah Committee, then created to carry out the Foundation's purposes, proposed an annual conference be held on the Idaho campus devoted to a continuing examination of the causes of war and the conditions of peace.

The basic assumption is that a better understanding of the nature of war and peace is necessary before effective action can be taken. Therefore, the first step in a successful solution to mankind's problem is an educational program and Mr. Levinson's support of such action is certainly appropriate.

Education about the causes of war and conditions of peace has two aspects. On one hand, it is necessary to study the problems and discover more information about the subject. On the other hand, what is known about the problem needs to be known and understood by as many people as possible.

Both study of new ideas and the transmission of known data are properly the functions of a university and the Borah Conference attempts to serve both functions. Its primary activity, however, is that of transmitting what is already known to more people.

Over the last ten years the Borah Committee has conducted a series of conferences, basically like that held last month, dealing with a variety of subjects whose relation to the causes of war or the conditions of peace needs to be better understood. These have included concern for economic problems, for the role of education, for the influence of public opinion, for the contributions of science and technology, as well as for the more specific political policies and activities bearing directly upon foreign policy and national defense.

War is such a massive affair that nearly any aspect of society may be considered as to its effect in causing war or establishing peace.

This year's conference was directed to more immediate political matters than usual. The Committee, in trying to further the educational purpose of the Borah Foundation, sought to reach students especially, and to interest them in the crises currently threatening peace. One of the techniques used

to this end was the series of informal discussions held in campus living groups on Wednesday night during the conference. Led by visiting speakers or a faculty member, these evening discussion meetings, to judge from various reports on them, appeared to have been one of the most successful features of the conference.

Great interest was shown by students who participated in them, and the visitors who took part spoke in terms of high praise for the mental alertness and intellectual curiosity of Idaho students. It is felt by the Borah Committee that these discussion meetings helped to stimulate student interest and thought on problems dealt with. Thus the Borah Foundation's educational purpose was served.

Program Different
There were other differences between the conference of this year and those of previous years. Fewer panels were scheduled, and fewer participants for each panel were included. Rather than including one or two students on each panel, a single all-student panel was set up. Committee members who were present in the audience report that the level of discussion at the all-student panel was high, and that the participants contributed effectively. To make the maximum use of visitors to the campus, few Idaho faculty members were included on panels. This year no banquets were held.

LITTLE MAN ON CAMPUS by Dick Bibler



"YOU CAN KEEP THE 'A'—BECAUSE YOU WERE SO CLEVER THAT NO TIME DURING THE EXAM WAS I ABLE TO DETECT HOW YOU WERE CHEATING!"

In Spite Of WHAT YOU THINK

By Bill Bates
Poor-old Mom. Poor neglected little old thing. Here she is the center of the universe, as Philip Wylie might say, and we here at this institution give her the cold shoulder.

Gymnasts Invited To Try For Spot Of New Yell King
The Exec Board Tuesday night voted to invite students who have had gymnastics experience to try out for Yell king this next year.

White Robes?
Get white robes for all the students. Flowing white robes and flowing "beards." Sight. Even supply the Moms with robes so they won't have to stand around looking like tourists.

Explain Rites
Get the philosophy and history departments to explain authentic so-called pagan rites. Or maybe this comes under the province of the Campus Christian Institute? Would not want to infringe on anybody's copyright.

Climax
And, at dusk, after the Day's celebrations, the President of the University, clad in a flowing white robe, with a laurel wreath encircling his temples, would ceremoniously throw a switch that cuts off all the electric power to the campus for the entire night. Then is when the real celebration begins.

Did you hear about the cannibal's son? He liked the gals best when they were stewed.

To permit more individuals to make direct personal contact with our main speakers, an informal coffee hour was scheduled. Student attendance at this coffee hour was very slim, however, and the Committee wonders whether this feature should be dropped, or whether it would become more successful if repeated over a period of several years.

In conclusion it should be borne in mind that the Borah Foundation's basic purpose is an educational one, the goal of educating for a fuller awareness, a better understanding, and a keener appreciation of the multifarious problems of war and peace.

Should we aim particularly to reach and stimulate the general public, or educators, or students, or all of these? Should our activities center on campus, or should they be state-wide? These, and many other aspects, must be subject to continuing examination and evaluation. The Borah Committee has no final answers; we are open to suggestions for improving the Foundation's effectiveness.

Concert Band Spring Show This Sunday
The University Concert Band, sixty-five strong, will present its annual spring concert Sunday, at 4 p.m. in the University auditorium, Conductor Warren Bellis announced today.

The band will open its program with the Toccata for Band by Frank Erickson, continuing with Rossini's "Barber of Seville" overture and the familiar "Zueignung" by Richard Strauss. Other selections will include Hermann's "North Sea Overture," and "Skyscraper Fantasy" by Donald Phillips. A new arrangement of "Parade of the Wooden Soldiers" will provide variety in addition to the previous modern tone pictures.

Featured numbers will be "new twist" arrangements of Old American Dances, presented in suite fashion, including picturesque musical interpretations of the Cake Walk, the Schottische, the Western One-step, the Wallflower Waltz, and the Rag; as well as a Cornet Trio playing LeRoy Anderson's "Buglers Holiday." Cornetists will be James Mercer, Jerry Strang and Ernest Carr.

LOST & FOUND
FOUND: Light meter in Arboretum. Contact Clair Hopkins, 2-8183 after 5 p.m.

MEZZANINE MUSIC SHOP
At Hodgins Drug
307 South Main
"Everything in Music"
Phone 2-1288

For Free Delivery SHOP
Willis Grocery And Market
531 S. Main
Phone 2-1353

Dr. J. F. Gray
OPTOMETRIST
Complete Optical Service
Idaho 1st National Bank Bldg.
Phone 3-1111

ARDEN FARM CO.

Jim Golden's Camp - eyeing

Last week—chock full of politics and Les Elgart—was one long succession of miscues for campsites. Maybe it was the spring weather. At least greening grass was a good way to rationalize the whole thing.

It was apparent that trouble was in the offing when an interested resident of Lindley Hall lifted his binoculars to take his daily look at the Kappa sun porch, saw a Kappa watching him through a pair of her own.

Senior president Larry Wing had his problems with the hierarchy as he wound up planning the Junior-Senior prom. He had to junk 1000 dance programs and have them reprinted after someone listed "T. D. Theophilus" as president of the University.

Still in the throes of campaigning, new president Dave Maxey hit one of those inevitable "embarrassing moments" at one of the halls.

Introducing part of his exec board slate, he started down the row, got to one woman candidate and drew a blank. Somebody reminded him that she was Carolyn Edwards, who he has known for years and lives in his home town.

And prior to elections Dixie Weeks, wife of the ASU prexy Dick Weeks was asked which presidential aspirants she would support. She picked the SG candidate. Her husband later said he "had her" trained in these matters. Weeks was elected on the SG slate last year.

Vote For . . .
Prior to the climactic smoker, sign construction reached its peak, with genius—inspired things such as "Wheels Go Round" and "Don't Be a Ham—Vote Bacon" gracing the once-beautiful landscape. Weather took its toll and campaign managers had to replace posters each morning on the soggy, windy campus.

In the SUB, the manager of the "Vote for Martin" campaign arrived early each morning to replace table signs that were thrown out by the uncooperative SUB crew each night.

But the whole thing had to come to an end sooner or later—certainly before candidates had breakdowns—so came the smoker.

Solitaire and Politics
Swit scenes gleaned from under a trenchcoat:
Freddy Burrow moving away the podium so all candidates—specifically, he said, Jim Kay, could see the audience and vice versa.

The droning commentary of KUOT's Rob Gese, who was attempting to fill in the gaps made an uneventful smoker interesting.

Brighter Things
The weekend brought brighter things.
Reluctant draftee Harry Platt, who was supposed to report for induction in early April, finally got a deferment. Permission granted for freedom until later, said the New York draft board, but send back 15 cent subway ticket for your transportation.

Platt is now trying to find the deat. He thinks he sent it to his mother.
Exhuberant over the impending Spring, a group of students descended upon a defenseless parked car, gave it a new Kemtone paint job in 15 minutes, drove around campus soliciting more work.

The Idaho Argonaut
Member
Associated Collegiate Press
Official publication of the Associated Students of the University of Idaho issued every Tuesday and Friday of the college year. Entered as second class matter at the post office at Moscow, Idaho.
John B. Hughes Editor
MANAGING EDITORS
Dean Judd (Acting) Don Ingle Don Neville-Smith

College Observatory—Series 18 Kissless Campus Alarmed

With DON-NEVILLE SMITH
Viewing with alarm the nationally-publicized kissless decree at University of Michigan's Stockwell women's dormitory is Cornell University Daily Sun writer, J. Kirk Sale.

Commenting on the dorm council 14-4 vote to stop "excessive osculation or cuddling" in or near the hall, Sale says:
"This is pretty startling stuff. This was not a resolution handed down by the university, nor an order from the president, nor a decision of the dormitory counselors. This was a completely voluntary decree passed by the students' own volition and without recommendations or orders from the Outside World . . ."

"How does all this apply to Cornell? Well, we can envision a day, perhaps not too far distant, when 14 little girls who have been idle for a few weeks will get together, decide that kissing is a definite public nuisance—not to say disturbance—and pass a law saying that all such nonsense must stop.

"There will be resistance by some girls. There will be anger from versa.
The droning commentary of KUOT's Rob Gese, who was attempting to fill in the gaps made an uneventful smoker interesting.

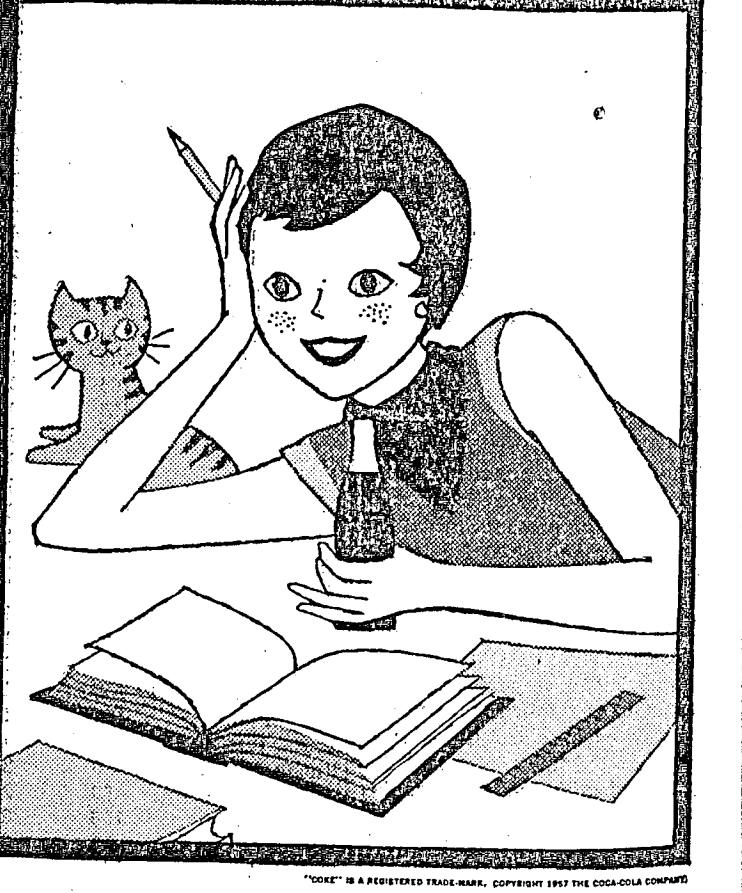
Brighter Things
The weekend brought brighter things.
Reluctant draftee Harry Platt, who was supposed to report for induction in early April, finally got a deferment. Permission granted for freedom until later, said the New York draft board, but send back 15 cent subway ticket for your transportation.

Platt is now trying to find the deat. He thinks he sent it to his mother.
Exhuberant over the impending Spring, a group of students descended upon a defenseless parked car, gave it a new Kemtone paint job in 15 minutes, drove around campus soliciting more work.

Kenworthy ALL THIS WEEK 7 & 9 P.M.
DEBORAH KERR · ROBERT MITCHUM
"Heaven Knows, Mr. Allison"
A 20th CENTURY-FOX PICTURE

NUART TONIGHT & WEDNESDAY "FUNNY FACE"
THURSDAY THRU SATURDAY

HOW WELL DOES A FATHER KNOW HIS SON?
The YOUNG STRANGER
Starring JAMES MACARTHUR KIM HUNTER · JAMES DALY
"MR. MAGOO GOES WEST"



Lucky girl!
Next time one of her dates bring up the Schleswig-Holstein question, she'll really be ready for him. Ready for that test tomorrow, too . . . if that bottle of Coke keeps her as alert tonight as it does other people.

Dr. Coca-Cola
SIGN OF GOOD TASTE

good for your face!

Old Spice
AFTER SHAVE LOTION

Refreshing antiseptic action heals razor nicks, helps keep your skin in top condition. 1.00 plus tax

SHULTON New York · Toronto

The Reward of a Fine Diamond
Eternal Beauty

Keepsake
DIAMOND RINGS

CORNER DRUG & JEWELRY STORE
"Where Quality Counts"
3rd & Main Moscow

Sigma Chis Win Song Trophy At Province

The Delt Spring Formal will be held this weekend, Gamma. This plan an Initiation Dance, Kappas and Fijis, enjoy a breakfast exchange, Sigma Chis receive an award and many prepare for the Song Fest to highlight the social activities this week.

DELTA TAU DELTA

The annual Delt Spring Formal will be held this Friday evening. Plans are now in the making, under the chairmanship of Tom Nelson, for the banquet which will be held at the New Idaho Hotel, and for the dance which will follow at the chapter house. Music will be provided by the Collegians from WSC.

Congratulations to brothers Ernie Davenport and John Rosholt for their newly elected positions in JFC. Ernie is the new president and John is treasurer.

Weekend guests at the shelter were Ray Wilms and Clark Meeks of Gooding. Sunday diner guests were Lil Piene, Delta Gamma, WSC, and Larry Dickinson, Lewiston.

The pledges wish to thank the Gamma Phi pledges for the enjoyable exchange Saturday afternoon and to congratulate them for handling softball pitcher, Glenn Potter, his first loss of the season.

GAULT HALL

Consolidated Cooperation and Amalgamated Rooster have gone over several points this week. Mike Meyer, business tycoon of the second floor, has invested in a South American project known as King Tut, and he is planning to match his project against Ralph Hull's Poultry Palouka.

Gault Hall Choir, under Bob Hazelbaker, director, has been busting out all over while they have conducted classes in the recreation room. Members are planning to sing with Forney in the Song Fest.

Thanks to the Alpha Chis for the car wash held Saturday and the luncheon exchange afterwards. During the afternoon some of the hall members and Alpha Chis also took part in a baseball game.

Hall sweaters have been in several weeks and according to Dick Anderson they may be picked up at Penny's in downtown Moscow anytime.

GAMMA PHI BETA

Kay Conrad and Louise Cummins returned Saturday evening from Seattle, where they met with the engravers of the "Idaho Gem." A heavy "Thank you" to the SAEs from the Gamma Phis for preparing a morning of wholesome activity Saturday.

Sunday was a memorable day for the Gamma Phi seniors, as they were honored at the annual senior banquet. The GPB graduates are: Sue McMahon, Louise Cummins, Nancy Short, Floretta Randall, Jo Lecona, Trink Curtis, Emily Moser and Beverly Burwell.

Thanks Sigma Nus for the beautiful serenade honoring Bev Rasor's pinning to Jim McDonald.

Thanks to the Deltas for the exciting pledge exchange Saturday. Monday the GPB sophomores began decorating for the initiation dance, which will be Sat. May 4. We are hoping that a flu epidemic doesn't arise!

WILLIS SWEET

Congratulations to Chet Prior, who was recently elected to executive board. Chet was also picked as vice president of the Social Co-ordination Council Thursday.

Thanks to all hall members who helped in the political campaigns of Willis Sweet candidates.

Larry Rray and Jimmy Gordon of Othello, Washington, were dinner guests Saturday and Sunday. Mr. and Mrs. George Crockett of Hansen, Idaho, were weekend guests.

DELTA DELTA DELTA

Congratulations to Carol Solum, who announced her engagement to Graydon Staley, Phi Kappa Tau, Wednesday evening.

If you saw people wandering around in sheets Wednesday night, it was only the annual Tri-Delt, Sigma Chi sheet exchange. We all enjoyed it, and would like to thank the Sigma Chis for the great baseball game and picnic Sunday afternoon.

Congratulations are in order for Fran Brown, and Anne Copithorne, who were initiated into Phi Upsilon Omicron, Home Economics Honorary, Sunday afternoon.

The Tri-Deltas are looking forward to their annual Sunrise Dance, 6:00 a.m. Saturday morning.

Weekend dinner guests included Judy Freeman, Orofino, Richard Copithorne, Kenneth Copithorne, Marshal Copithorne, Pete Jackson, Calgary, Canada and Marilyn Durrose, Forney.

SIGMA CHI We are now the proud owners of the Montana, Idaho and Eastern Washington Sigma Chi Province Songfest Trophy. The competition was held Saturday night at the 1957 province conference in Spokane at which Idaho's Gamma Eta of Sigma Chi came out on top.

who passed his pin to Dorothy Rae Safurs, a former Alpha Gamma Delta at WSC. Congratulations to Monte Weaver who has recently announced his engagement to June Hoss of Permeal French House.

Saturday dinner guests were Deanna Geertsen, Gamma Phi Beta; Juanita Lorenz, Pendleton, Oregon; Ann Hart, Walla Walla; Clark Meek, and Ray Wilms, Gooding. Gene Woods, who is stationed at Rapid City, South Dakota with the Army, was a guest of Bob and Jim Prestel last week.

The house was honored to have Kenny Coutre Gutzman as a weekend guest.

KAPPA KAPPA GAMMA

Thank you, Fijis, for the Saturday morning surprise wake-up and musical call. Six o'clock isn't our favorite hour, but the frosh and sophomores appreciated the breakfast exchange anyway.

Ten women were tapped and initiated into the home economics honorary Sunday morning. New members are Fran Brown, Ann Copithorne, Tri Delt; Sylvia Stoddard, Theta; Doris Gissel, Jamie Smith, Pi Phi; Kay Conrad, Gamma Phi; Dorothy Bauer, Kappa; Kay Zen-

er, Steel, and Anita Koskella, Jane Scheline, Forney.

After the initiation ceremony in the home economics building, a breakfast was held at the New Idaho Hotel where initiates, old members and faculty were present. Mrs. Calvin Warnick, an alumna, was a guest.

A Phis Capture 4th Straight Crown In SAE Olympics

Alpha Phi Saturday morning accumulated 35 points and for the fourth straight year walked off with the championship trophy at the Sig Alpha Olympics. Kappa was second.

The Alpha Phi won three of eight events for their trophy. Kappa placed first in two and second in two for 33 points. Theta was third with 25 and Gamma Phi fourth with 20. All women living groups except Alpha Chi participated.

The results: Ping-Pong relay, Alpha Phi, 1st; Theta, 2nd. Potato race, Gamma Phi, 1st; Kappa, 2nd.

Football punt, Alpha Phi, 1st; Kappa 2nd. Wheelbarrow race, Kappa, 1st; Theta, 2nd.

3-legged race, Kappa, 1st; P Phi, 2nd. Egg throw, Ethel Steel, 1st; Forney Hall, 2nd.

Pie eating contest, Barbara Barry, Theta, 1st; Helen Hanford, Alpha Phi, 2nd. Tug-of-war, Alpha Phi, 1st; Hays Hall, 2nd.

Shingle Burning At Robinson Needless

Members of Junior IFC will collect firewood for distribution around the Robinson Lake picnic area, Eric Carlson, chairman, said Monday.

The wood, he said, will bring an end to University students using miscellaneous shingles and fence posts from private property for fires.

He said the University will supply a truck for members to haul firewood from lumber mills in the area. The project will probably begin today.

Tri-Delt, Theta Win WRA Opener

WRA softball is well underway as Tri Delt beat Fitch and Theta won over Alpha Chi Friday.

Today's games feature Forney against Delta Gamma and Hays against Pi Phi. Steel and Kappa and Alpha Phi and Alpha Chi play Thursday. Softball games are held at the field opposite the new library.

Try-outs will be held Wednesday at 4 p.m. for women interested in playing softball against WSC.

Definition of coffee: Opposite of booze (plasma before sundown.)

IT'S FOR REAL! by Chesterfield

ON CLOSE EXAMINATION* Of all the different sorts of guys There are only two that I despise: The first I really would like to slam Is the one who copies from my exam. The other one's the dirty skunk Who covers his and lets me funk!

MORAL: You'll pass the pleasure test with Chesterfield King. Yes, if you want your pleasure summa cum laude, smoke Chesterfield King! BIG length, BIG flavor, the smoothest tasting smoke today because it's packed more smoothly by ACCU-RAY.

Chesterfield King gives you more of what you're smoking for!

*\$50 goes to Louis F. Welch, Iowa State College, Ames, Iowa, for his Chesterfield poem. \$50 for every philosophical verse accepted for publication. Chesterfield, P.O. Box 21, New York 46, N.Y. © Liggett & Myers Tobacco Co.

Social Calendar

- May 2—Drama Production
- May 3—Drama Production
- May 4—Track—University of Washington, here
- LDS Dance
- Gamma Phi Beta Dance
- Military Ball
- Delta Chi Dance
- Phi Kappa Tau Dance
- Beta Theta Pi Dance
- May 5—University Concert Band
- May 6—Baseball—WSC vs. Idaho, here.

Martha Sharp Phi U Prexy

Martha Sharp, Forney, was named president of Phi Upsilon Omicron, national home economics honorary, and a state of six other officers were elected at a recent meeting of the group.

Other officers include Judy Archibald, Delta Gamma, vice president; Marilyn Matthews, Pi Phi, chaplain; Ellie Johnson, Alpha Chi, candle editor; Cecelia Montoya, Ethel Steel, recording secretary; Mary Owl, Hayes, corresponding secretary; and Carol Seitz, French, marshal.

Ten women were tapped and initiated into the home economics honorary Sunday morning. New members are Fran Brown, Ann Copithorne, Tri Delt; Sylvia Stoddard, Theta; Doris Gissel, Jamie Smith, Pi Phi; Kay Conrad, Gamma Phi; Dorothy Bauer, Kappa; Kay Zen-

er, Steel, and Anita Koskella, Jane Scheline, Forney.

After the initiation ceremony in the home economics building, a breakfast was held at the New Idaho Hotel where initiates, old members and faculty were present. Mrs. Calvin Warnick, an alumna, was a guest.

A Phis Capture 4th Straight Crown In SAE Olympics

Alpha Phi Saturday morning accumulated 35 points and for the fourth straight year walked off with the championship trophy at the Sig Alpha Olympics. Kappa was second.

The Alpha Phi won three of eight events for their trophy. Kappa placed first in two and second in two for 33 points. Theta was third with 25 and Gamma Phi fourth with 20. All women living groups except Alpha Chi participated.

The results: Ping-Pong relay, Alpha Phi, 1st; Theta, 2nd. Potato race, Gamma Phi, 1st; Kappa, 2nd.

Football punt, Alpha Phi, 1st; Kappa 2nd. Wheelbarrow race, Kappa, 1st; Theta, 2nd.

3-legged race, Kappa, 1st; P Phi, 2nd. Egg throw, Ethel Steel, 1st; Forney Hall, 2nd.

Pie eating contest, Barbara Barry, Theta, 1st; Helen Hanford, Alpha Phi, 2nd. Tug-of-war, Alpha Phi, 1st; Hays Hall, 2nd.

Shingle Burning At Robinson Needless

Members of Junior IFC will collect firewood for distribution around the Robinson Lake picnic area, Eric Carlson, chairman, said Monday.

The wood, he said, will bring an end to University students using miscellaneous shingles and fence posts from private property for fires.

He said the University will supply a truck for members to haul firewood from lumber mills in the area. The project will probably begin today.

Tri-Delt, Theta Win WRA Opener

WRA softball is well underway as Tri Delt beat Fitch and Theta won over Alpha Chi Friday.

Today's games feature Forney against Delta Gamma and Hays against Pi Phi. Steel and Kappa and Alpha Phi and Alpha Chi play Thursday. Softball games are held at the field opposite the new library.

Try-outs will be held Wednesday at 4 p.m. for women interested in playing softball against WSC.

Definition of coffee: Opposite of booze (plasma before sundown.)

IT'S FOR REAL! by Chesterfield

ON CLOSE EXAMINATION* Of all the different sorts of guys There are only two that I despise: The first I really would like to slam Is the one who copies from my exam. The other one's the dirty skunk Who covers his and lets me funk!

MORAL: You'll pass the pleasure test with Chesterfield King. Yes, if you want your pleasure summa cum laude, smoke Chesterfield King! BIG length, BIG flavor, the smoothest tasting smoke today because it's packed more smoothly by ACCU-RAY.

Chesterfield King gives you more of what you're smoking for!

*\$50 goes to Louis F. Welch, Iowa State College, Ames, Iowa, for his Chesterfield poem. \$50 for every philosophical verse accepted for publication. Chesterfield, P.O. Box 21, New York 46, N.Y. © Liggett & Myers Tobacco Co.

Ronault Portrait Best In Show Says Kirkwood

"The Lovely Madam X," a 1915 gouache on paper by Ronault, has been picked by Professor Mary B. Kirkwood of the University art faculty as the "gem" of the Museum of Modern Art portrait exhibit now at the University.

Well-known for her own work in oils, Professor Kirkwood picked the relatively small-sized portrait for special mention from among 19 paintings and seven pieces of sculpture being shown in the Art building until May 12. The works are by contemporary artists who were especially popular a generation ago. The exhibit is open to the public daily without charge.

Other works considered outstanding by Miss Kirkwood in the show sponsored by the Fine Arts committee included an oil painting by Ivan Albright entitled "Woman."

"Albright paints few pictures compared with other artists," she said, "because of the extreme detail in them. Albright did the portraits for the movie version of Dorian Grey."

On the other extreme, an oil painting by Milton Avery called "Dessert," which shows a family at a meal, has an almost simple "childlike quality," she said.

A pastel by Lucien Freud, grandson of the famed psychoanalyst, is an expression of the Freudian philosophy, Miss Kirkwood believes. Called "Girl with Leaves," it is a portrait of Freud's wife among the leaves of a tree.

After looking at specimens taken from the skeleton, Dr. Bowers estimated, without being able to examine personally the area, that the mastodon could possibly have roamed Idaho about 9,000 years ago.

Completely Intact Dr. Martin said it is believed the skeleton is completely intact and lying on its side. It was unearthed by a power shovel near the skeleton's head. The shovel snapped one of the tusks and broke

Matrix Table Will Honor Journalists

The Matrix Table, national women's journalism honorary will present the Matrix Table May 15, at 7 p.m. Outstanding citizens in the community and campus leaders will be invited to attend. The Theta Sigma Phi chapter at WSC will also be invited.

A tea was held at Dr. Granville Price's home Sunday to plan the banquet. Jane Remsberg is president of Idaho's Theta Sigma Phi chapter.

Wesley Foundation: Meets Sunday evening from 5-7:30 p.m. Coffee hour, Thursday at 4 p.m.

Lutheran Students Assn.: Meets Sunday from 5 to 7 p.m. Bible Study, Tuesday from 7 to 8 p.m. at the CCC.

Christian Science: Meets every second and fourth Tuesday, 7 p.m. at the CCC.

Canterbury Club: Dinner Sunday at 6 p.m. at Canterbury House. Morning prayer is held every Wednesday at 7 a.m.

L. D. S.: Sunday School — Sunday, 9:15 a.m. Sacrament Meeting — Sunday, 7 p.m. Mutual — Tuesday at 7 p.m. at CCC.

Kappa Phi: Meets Tuesday at 7 p.m. at the CCC.

Inter-Church Council: Meeting Wednesday, 9 p.m. CCC.

"FAIR DEAL" THE ONLY FAIR PRICE HAIRCUT — \$1.25 CAMPUS BARBER SHOP

Radio-Activity Determines Age Pre-Historic Skeleton

Bone specimens, believed to be part of a pre-historic elephant skeleton discovered near Kamiah, will be given special tests to determine the historical age of the find, according to Dean Boyd A. Martin, college of letters and science.

"Specimens will be shipped to the University of Chicago," he said, "to undergo carbon-14 tests, which will give the approximate age in which the animal lived."

"Determining the date in which the mastodon lived will be the most significant result of the discovery. The skeleton will give proof that these animals lived here during a certain period."

The site of the skeleton, 100 yards off a main highway, is now under guard. The discovery was made Saturday by building contractor Sigurd Grove, who was excavating a sewer trench.

Staffers Visit Site Four members of the University staff, Dr. Earl Cook, dean of the college of mines; Professor Earl Larsson, vertebrate zoology specialist; Professor Kenneth Grimm, geologist, and Dean Martin, examined the area Monday. They advised that the portion of the exposed skeleton be covered to prevent damage by air.

After looking at specimens taken from the skeleton, Dr. Bowers estimated, without being able to examine personally the area, that the mastodon could possibly have roamed Idaho about 9,000 years ago.

Completely Intact Dr. Martin said it is believed the skeleton is completely intact and lying on its side. It was unearthed by a power shovel near the skeleton's head. The shovel snapped one of the tusks and broke

Matrix Table Will Honor Journalists

The Matrix Table, national women's journalism honorary will present the Matrix Table May 15, at 7 p.m. Outstanding citizens in the community and campus leaders will be invited to attend. The Theta Sigma Phi chapter at WSC will also be invited.

A tea was held at Dr. Granville Price's home Sunday to plan the banquet. Jane Remsberg is president of Idaho's Theta Sigma Phi chapter.

Wesley Foundation: Meets Sunday evening from 5-7:30 p.m. Coffee hour, Thursday at 4 p.m.

Lutheran Students Assn.: Meets Sunday from 5 to 7 p.m. Bible Study, Tuesday from 7 to 8 p.m. at the CCC.

Christian Science: Meets every second and fourth Tuesday, 7 p.m. at the CCC.

Canterbury Club: Dinner Sunday at 6 p.m. at Canterbury House. Morning prayer is held every Wednesday at 7 a.m.

L. D. S.: Sunday School — Sunday, 9:15 a.m. Sacrament Meeting — Sunday, 7 p.m. Mutual — Tuesday at 7 p.m. at CCC.

Kappa Phi: Meets Tuesday at 7 p.m. at the CCC.

Inter-Church Council: Meeting Wednesday, 9 p.m. CCC.

"FAIR DEAL" THE ONLY FAIR PRICE HAIRCUT — \$1.25 CAMPUS BARBER SHOP

IT'S FOR REAL! by Chesterfield

ON CLOSE EXAMINATION* Of all the different sorts of guys There are only two that I despise: The first I really would like to slam Is the one who copies from my exam. The other one's the dirty skunk Who covers his and lets me funk!

MORAL: You'll pass the pleasure test with Chesterfield King. Yes, if you want your pleasure summa cum laude, smoke Chesterfield King! BIG length, BIG flavor, the smoothest tasting smoke today because it's packed more smoothly by ACCU-RAY.

Chesterfield King gives you more of what you're smoking for!

*\$50 goes to Louis F. Welch, Iowa State College, Ames, Iowa, for his Chesterfield poem. \$50 for every philosophical verse accepted for publication. Chesterfield, P.O. Box 21, New York 46, N.Y. © Liggett & Myers Tobacco Co.

Revive the life of your old worn shoes. Bring them to MOSCOW SHOE REPAIR East 3rd St.

SEE US NOW FOR YOUR Body & Fender Work NEELY & SON 123 West 4th Moscow

Why not call Rudy's Studio and arrange to have pictures taken. Tops in photography for all occasions. RUDY DIAL 2-7011

DR. J. HUGH BURGESS Optometrist Complete Visual Care O'Connor Bldg.—Phone 2-1344

Patronize Argonaut Advertisers

DELTA DELTA DELTA Congratulations to Carol Solum, who announced her engagement to Graydon Staley, Phi Kappa Tau, Wednesday evening.

DELTA DELTA DELTA If you saw people wandering around in sheets Wednesday night, it was only the annual Tri-Delt, Sigma Chi sheet exchange. We all enjoyed it, and would like to thank the Sigma Chis for the great baseball game and picnic Sunday afternoon.

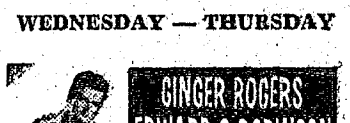


LAST TIMES TONIGHT



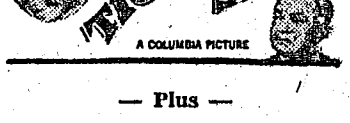
Storm of the Nile

WEDNESDAY — THURSDAY



NIGHT SPOT

Margaret O'BRIEN



Walter Brennan, SUPERSCOPE Technicolor

NOW AT DAVIDS'

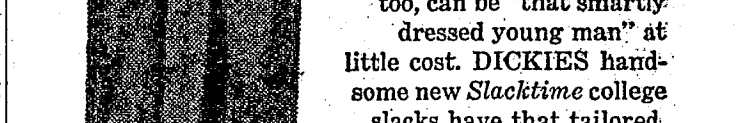


Back Strap College Slacks

JUST IN... So that you too, can be "that smartly dressed young man" at little cost. DICKIES hard-some new Slacktime college slacks have that tailored, slim look with adjustable buckle back strap!... fully washable.

See 'em today!

\$5.95



DAVIDS'

Bad Opening Inning Is Vandal Downfall

BASEBALL STANDINGS

	W	L	Pct.
Oregon	4	1	.800
Oregon State	3	1	.750
Washington	4	3	.571
Idaho	2	3	.400
Wash. State	1	6	.143

Idaho pushed across three first inning runs but Oregon came back strong with five in the same stanza and went on to trounce the Vandals, 14-3, at Eugene yesterday.

The Ducks tallied in the first inning on 5 hits, two walks, and an error. Idaho could not score after the outburst in the opening canto.

Idaho scoring came when outfielder Ron Braden walked, stole second, and went to third on a single by Knute Westergren. Braden came home on a bad throw by the Oregon shortstop and Westergren took second. He scored on outfielder Ralph Lower's single. Lower went to third on a single by Bill Stellmon and scored on a sacrifice fly by Jim Throckmorton.

The loss gave Idaho a 2-3 record in ND play and dropped them back to fourth place, ahead only of defending champion WSC which dropped a 4-2 decision to Washington yesterday.

Idaho faces Oregon at Eugene again today and then winds up the six-game "Death Valley" road tour with singles games at Corvallis against Oregon State Wednesday and Thursday.

SPORTS BOARD

by Dean H. Judd

Eight-thousand to 9,000—that's right—from eight to nine thousand people attended Idaho's track meet with Oregon at Eugene Saturday. The picture below shows them packed in.



That figure, which should be amazing to Idaho fans, isn't at all amazing for Oregon crowds. The fans at Eugene almost always turn out that well.

What's the matter with Idaho? At best, the Vandals can possibly draw a thousand fans to a meet if there are not too many other attractions and the weather is at its best.

Two factors seem to be key reasons that a rapidly improving Vandal track team can't arouse any interest from the student body or townspeople: (1) Student interest, both by potential participants and spectators; and (2) a lack of funds from the athletic department.

Interest seems very low. With the prospect that his squad may be very thin this year, Glander asked for mass turn-out by students interested. A good number of men could have made the squad and given it the bit of depth that it so badly needs, but not too much interest was shown. Now, thanks to the few that did make an effort, Glander has a track team; but it is even growing smaller as a result of costly key injuries.

The net result of it all, was badly pointed out Saturday. Oregon went into the meet with 67 men and the Vandals could field a team totaling only 11.

Why couldn't some of the numerous high school stars who hear boasting about their feats have tried for a spot on the squad?

The second problem is the one that keeps Idaho consistently low in all sports. The age-old lack of money.

While the Idaho track team is limited to two and a half scholarships, the other schools in the Northern Division have at least five times that many to give to prospective cinder stars.

Oregon gives ten scholarships, Oregon State 12 and Washington close to 20. Washington State undoubtedly does just as well.

While no real solution is apparent for the monetary problem, there is one for interest.

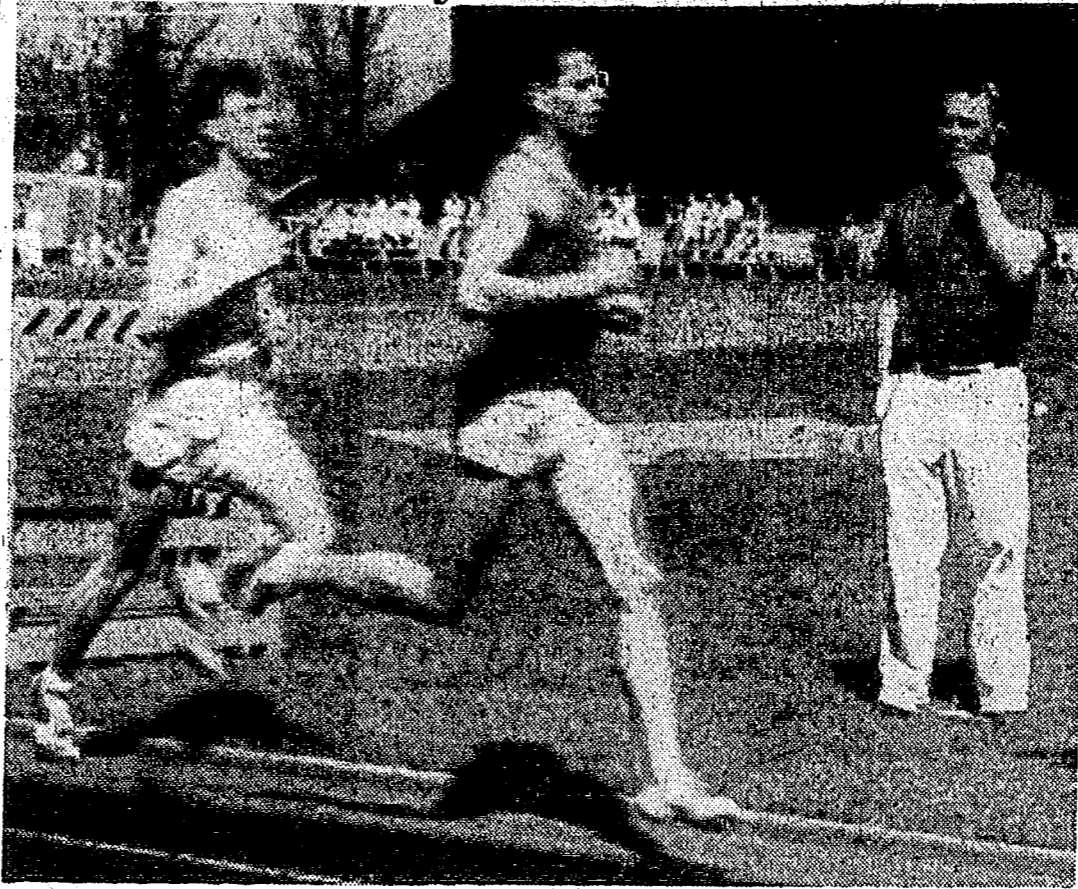
Oregon turned out to cheer on their star Jim Bailey Saturday.

Why can't Idaho get out to give their stars, Ray Hatton and Dick Boyce, the same support when the Vandal Thinclads meet Washington here Saturday afternoon?

Hello.
Hello.
Ride?
Yes.
Hop in.
Wait!
What?
Nice boy?
Yes.
All right.
Wait.
What?
Nice girl?
Yes.
Goodbye.

"Do you have a faculty for making love?"
"No, but we have a student body."

Bailey Bests Hatton



Oregon's standout distanceman Jim Bailey is shown crossing the finish line after racing to a new meet record in the mile at Eugene Saturday. Idaho's Ray Hatton finished only one stride behind Bailey in an exciting climax.

Vandals Gain Three Firsts

Oregon's Ducks, undefeated the last three years in ND dual track meets, took first places in all but three events at Eugene Saturday to crush Idaho, 113-18.

Ray Hatton and Dick Boyce, Vandal distancemen, each copped a first place, as did Idaho shot-putter Jerry Kramer, but the 68-man Oregon squad completely dominated the clash against the 11-man Idaho team in all other events.

Hatton raced to a 9:43.4 decision in the two mile, while

Boyce topped the Ducks' Jim Grelle in the 880 with a time of 1:39.9. Kramer put the shot 50 feet 7 3/4 inches to crack the former meet record of 49 feet 8 1/4 inches set by Oregon's Ben Lloy in 1955.

The highly publicized mile race between Jim Bailey of Oregon and Hatton of the Vandals was somewhat of a disappointment due to high winds which hampered running activities. Bailey, however, set a new meet record for the event, winning in a time of 4:19.5, while Hatton finished only a stride behind.

Oregon, which has now won 16 straight conference meets and needs only a victory over Oregon State to remain undefeated for a fourth consecutive year, set five other meet records in the one-sided win.

The Ducks' Martin Pedigo leaped 23 feet 1 inch to best Vandal Bruce Sweeney's 22 feet 8 1/4 inches mark, set in 1953 and Webfoot Doug Basham broke another of Sweeney's standards set five years ago by running the high hurdles in 14.6, cutting the old record by one tenth of a second.

Other marks broken were the high jump by Ken Grant and the javelin by Ed Bingham. Grant cleared 6'5" in the high jump, while Bingham hurled the javelin 216 feet 1/2 inch.

Idaho trackmen will host the Washington Huskies in a PCC meet here Saturday. Field events will start at 1:30 with track events beginning at 2.

Defensive Play Outstanding In 1st Football Scrimmage

Idaho's defensive football unit gave promise of becoming the team's main strong point this fall in the first scrimmage of spring practice Saturday.

Varsity head Coach Skip Stahley praised Vandal defensive players for their sharp tackling and otherwise outstanding play in the contest won by last year's veterans 7-0.

The team was not as sharp on offense, however, and was ragged in ball carrying losing much of its ground gains on penalties.

Veteran halfback Larry Norby scored the games only touchdown, plunging over from inside the one-yard stripe to win the tilt for last year's top varsity men. Kicking specialist Ken Hall booted the extra point.

All 51 players saw action in the rugged two-hour affair, which Stahley termed "highly satisfactory after only eight practices."

A few minor bumps and bruises were sustained by some of the players, but no serious injuries were reported. Howie Willis, veteran quarterback, and end Lonnie Park, who were both suffering from minor hurts last week are fully recovered. Stahley expects Ted Eakles, halfback transfer from Northeastern Oklahoma A&M, who suffered a broken collarbone two weeks ago, to be back in action soon.

The Vandals have now completed eight days of practice drills through Saturday. The squad has 12 more sessions and will hold another scrimmage Saturday.

Gary Linden and Chuck Merteel beat Dave Cummins and LaRalle Smith by identical scores of 6-0 and 6-1.

Both Vandal doubles teams lost. The netmen face Whitworth in a return match here tomorrow afternoon.

Pitcher Steve Hincley's brilliant hitting and mound work helped the Idaho Vandals to a split of a two-game PCC series with Washington at Seattle Friday and Saturday.

Hincley pitched two-hit ball over the nine inning route Saturday and blasted a three-run homer in the fourth stanza to give the Vandals a 4-2 victory. Doug Randall, fast becoming the hard-luck hurler of the Vandal staff, threw a two-hitter Friday, only to lose 5-0.

Coach Clem Parberry's Vandals collected seven hits off Washington starter Ed Lalaja and his successors Bob Reimer and Darryl Burke, in winning Saturday's tilt. Hincley limited the Huskies to but two hits and fanned seven in picking up his second straight PCC win in 1957. Two Vandal errors coupled with outfielder Monte Geiger's single wrecked Hincley's shutout.

Ron Braden notched two hits in three times at bat to lead Idaho at the plate.

Friday, ace Husky righthander George Kritsonis and reliefers Lalaja and Geiger allowed only three hits in a 5-0 Washington victory.

Kritsonis hurt After hurling very effective ball for four innings, Kritsonis slipped and pulled a chest muscle and was moved to the outfield. The Husky curveballer, whose record now stands at 2-0 will be out for the Washington State, and Oregon games.

Randall allowed the Washington club only two safeties but was the victim of poor fielding support by his teammates in the fifth inning. Husky Gary Howard walked, second baseman Terry Frere beat out a bunt single, and a wild pitch with a doublesteal scored one tally. A Vandal infield miscue and another wild pitch helped the Huskies to another unearned run.

The final pair of Washington counters also came on Idaho errors.

The Huskies actually won the game in the fourth when Geiger belted a long home run over the centerfield scoreboard.

Huskies Swamp Tennis Squad

A powerful Washington tennis team handed the Idaho netmen their third straight loss of the season Saturday shutting them out 7 to 0.

The Vandals failed to win a set in the weekend matches. Only Frank Benson and Len Chin gave their opponents any trouble.

Chin led the Vandals by winning seven games. He was beaten 6-2 and 7-5 by Masami Komo. Benson was beaten by Don Fry 6-1 and 7-5.

Larry Moss lost to Larry Munger of Washington 6-1 and 6-2.

Mural Golf Title Goes To Delts

Delta Tau Delta posted a combined low-team score of 340 in 18 holes to win the 1957 intramural golf championship. The win gave the Delts their second straight trophy, having won the bowling title last week.

Freshman Lynn Hansen paced the Delts four-man with a 38-38-76 to give him runner-up honors in the individual race. Dick Wisdom was second low for DTD with 45-42-87; Gary Simmons had 47-41-88; and Gregg Wilson rounded out the team with a 45-44-89.

Buddy Mhyre, Town Men's, was medalist for the tourney with a 36-38-74, to edge Hansen by two strokes. Kappa Sig's Gary Wagner and George Luckhardt, ATO, tied for third with 39-38-77.

TMA were runner-up for team honors with a 346 total over the 18 holes, ATO's were third with 349, Upham Hall fourth with a 355 and Kappa Sigs rounded out the top five with a team total of 366.

76 Compete Seventy-six men competed in the tourney which began at 8 a.m. and finished at 3:45 p.m.

The 100 points picked up by the Delts with their golf victory, boosted them into third place in total point standings, 21 ahead of Tau Kappa Epsilon which has held that spot for most of the year.

Lindley Hall, although finishing ninth in golf, maintained a strong hold on first place 60 points ahead of second-place Kappa Sigs, who lead the Delts by 94.5.

SAE's defending golf champions, finished seventh, but picked up 82 points to move them from seventh to fifth place in the team standings, ahead of Phi Delta Theta and Campus Club which dropped to sixth and seventh respectively.

In softball action yesterday Fijis and Delts remained unbeaten in League 1 and 2 respectively.

Fijis, defending campus champs edged Sigma Nu 6-5, and Delts downed SAE's 3-1 giving both squads their fourth straight victory. SAE's who scored the first run of the year, although unearned, off Delt hurler Glenn Potter were previously tied for top spot in League 2.

Horseshoe competition reached the quarter-final stage yesterday with eight men, Garland Clark, Phi Tau; Stan Stroup, Campus Club; Terry White, Fijis; defending champion Arlen Chaney, Beta; Clarence Reed, Farm House; Max

Clark, PKT def. King, WSH Stroup, CC def. Pearson, SAE White, PGD def. Brower, LH Chaney, BTP def. Smith, WSH Reed, FH def. Anderson, PDT McCormick, WSH won by forfeit Rene, DTD def. Harrison, FH

Yesterday's Softball Results SC def. LCA 24-2 PDT def. DC 3-2

Total Intramural Points (To Date)

LH 1424.5	SN 655.5
KS 1364.5	SC 845.5
DTD 1270	GH 642.5
TKE 1249	WSH 827
SAE 1184	DSP 824.5
PDT 1179.5	PKT 748
CC 1170	IC 604
CH 1065	TMA 526
BTP 1053.5	LCA 515.5
PGD 1017.5	PH 484
ATO 982	LDS 217
DC 978	FH 200
UH 887	

Intramural Golf Points		
DTD 100	DC 64	The F
TMA 97	BTP 61	again w
ATO 94	CC 58	ence do
UH 91	PDT 50	The
KS 88	DSP 47	Idaho to
SN 85	SC 44	at home
SAE 82	WSH 38	Christm
CH 79	IC 43	final ex
LH 76	FH 33	In fox
TKE 73		before s
PGD 70		only gar
PKT 67		The

Today's Softball Schedule		
Field 1 FH-KS	DC 64	The F
Field 2 UH-CC1	BTP 61	again w
Field 3 CC1-WSH1	CC 58	ence do
Field 4 PH1-LH1	PDT 50	The
Field 5 GH1-CH1	DSP 47	Idaho to

Tomorrow's Softball Schedule		
Field 1 UH2-LH2	DC 64	The F
Field 2 PH2-WSH2	BTP 61	again w
Field 3 CC2-CH2	CC 58	ence do
Field 4 IC2-GH2	PDT 50	The
Field 5 TKE-TMA	DSP 47	Idaho to

Thursday's Softball Schedule		
Field 1 DSP-PGD	DC 64	The F
Field 2-BTP-LCA	BTP 61	again w
Field 3-SN-SC	CC 58	ence do
Field 4 DC-PKT	PDT 50	The
Field 5 PDT-SAE	DSP 47	Idaho to

Sticklers!

WHAT'S A SOUTHWESTERN WHO NEVER HAS A MATCH? (SEE PARAGRAPH BELOW)

WHAT IS A TALKATIVE FARM BOY?
HAROLD PINKER, QUEENS COLLEGE
Vocal Yodel

WHAT IS A LEAKY PEN?
EARL MILLER, U. OF MIAMI
Blotter Dotted

WHAT IS A SMART ELF?
ROBERT BALDRICK, U. OF MINNESOTA
Bright Sprite

WHAT IS AN IMPROVED HANDCUFF?
RICHARD SULLIVAN, U. OF CHICAGO
Better Fetter

WHAT DO HYPOCHONDRIACS DO?
NOEL DOYLE, JR., PROVIDENCE COLLEGE
Feign Pains

THIS HOMBRE lives in a Dallas palace. He's got oceans of oil, carloads of cattle—and plenty of Luckies, too. But if he's always begging for a match at light-up time, this affable gent becomes a Vexin' Texan! Give him credit for knowing his brands, though: a Lucky tastes like a million bucks—two million, in Texas! That's because a Lucky is all cigarette . . . nothing but fine, mild, good-tasting tobacco that's TOASTED to taste even better. Try a Lucky right now. Reckon you'll say it's the best-tasting cigarette you ever smoked!

Luckies Taste Better

"IT'S TOASTED" TO TASTE BETTER . . . CLEANER, FRESHER, SMOOTHER!

AT. Co. PRODUCT OF The American Tobacco Company AMERICA'S LEADING MANUFACTURER OF CIGARETTES

Live better...ELECTRICALLY

THE WASHINGTON WATER POWER CO.

STUCK FOR DOUGH? START STICKLING! MAKE \$25

We'll pay \$25 for every Stickler we print—and for hundreds more that they're easy to use. Think of dozens in second! Sticklers are simple riddles with two-word rhyming answers. Both words must have the same number of syllables. (Don't do drawings.) Send 'em all with your name, address, college and class to Happy-Joe-Lucky, Box 67A, Mount Vernon, N. Y.

MIL
VOL.
M
F
Reg
put or
Ball S
set to
The
60
The F
again w
ence do
The
Idaho to
at home
Christm
final ex
In fox
before s
only gar
The
make
sions ;
Idaho i
have ta
attitude
ing to
Each
make a
all-conf
change
give fan
more th
one seas
To cor
conferen
the first
Idaho p
against
vacation
The U
ed at th
UCLA c
would p
7. Oreg
cluded th
Idaho w
idate UC
But it
the co
anew a
the con
both W
stick B
Action
here at 1
this "ta
and esta
of the co
When
time to
school s
united, r
personal
There
"there's
it."
Dr.
To
Litt
Univer
philus w
31st Litt
off banq
p.m. in
SUB, La
er, anno
Finals
test, cr
presenta
awards t
program
The ar
contests
will be m
Theophil
of the U
He was
riculture
became
versity.
Earl B
rell Web
in the f
test.
The th
from a
meeting
ary and
day night
Trail
and thir
They wi
ture top
The qu
Club pr
lists ar
chley an