

Anderson As Veep Concerned Mainly With Coordinating Campus Activities

By Don Ingle

Coordinating all student representatives and committees in the ASUI structure is classified as "my major area of concern this year," by Clark Anderson, student body vice-president.

"The new ASUI structure affords much more opportunity for the students in the line of activities," Anderson said. "It is my personal desire that the students will take advantage of the positions of responsibility which are available."

Anderson was the second member elected to the Exec Board in last spring's election. He ran on the United party and was elected by his fellow board members to the position of veep.

dent body causes us to meditate upon the confidence students have placed in our willingness to represent them in their student government," he added.

A major project for the Board this year was started last night



CLARK ANDERSON with the appointment of a committee to work out a solution to the campus parking problem.

Veep in Charge

Under the new ASUI structure which was passed last year, the vice-president was placed in charge of coordinating the activities of committees, student representatives and other promotion and service departments.

"The proof of the success of the new system and its committee selecting committee, the Board of Selection and Control," Anderson said, "will be determined by the workings of the people they select to serve on the ten committees. We have not had the opportunity to observe this as yet, because the committees were just chosen last spring."

Close Group

The veep said he felt the Board had crossed the major problem which faces every new set of elected officers and had developed into a close knit group.

"The Exec Board has become unified and we better recognize our function now than we had last spring," he said. "We had committed ourselves to party affiliations, but have become a close knit group throughout our work together thus far."

"Not only have we recognized our responsibilities as Exec Board members," he continued, "but we have profited personally by the experience of responsibility which have been placed on our shoulders."

Working Hard

He said the members were putting enough effort into the Board's activities and responsibilities to both improve student government and themselves.

"The fact that each of us is representing one-ninth of the stu-

Parking Is Hurdle

"This parking problem will be the big hurdle for the board this year," Anderson said. "There are a lot of possibilities which are being considered, but as yet nothing has proven satisfactory."

Anderson is a two year veteran on the Idaho varsity baseball team. He probably will be counted on to take over a major portion of the pitching chores for the Vandals this coming spring.

Frosh Enthusiasm

"Because of his participation in athletics on campus he is very familiar with the problem concerning the lack of student enthusiasm and spirit at the ball games."

"The incoming Frosh have shown more enthusiasm than I have seen in any other class since I have been here," he said. "If this spirit could be passed on to the rest of the student body we would not be

Tennis Tourney To Begin Monday

Beginning Monday, the WRA doubles tennis tournament will be in full swing. The tournament, which will be played on both the new courts located behind French House and the Ridenbaugh courts, will continue Tuesday through Thursday at 4:00 p.m.

Monday nights have been reserved for people who want special help with rules, scoring, and tennis techniques.

Tennis rackets may be obtained free of charge from WRA at the women's gym from 4:00 p.m. to 5:00 p.m.

Make-up matches will be played on the Ridenbaugh courts on Monday nights.

The following rules concerning the doubles tennis tournament have been issued by WRA officials.

1. Each girl must furnish her own balls.
2. Matches will be played from 4:00 p.m. to 5:00 p.m.
3. If a participant is ten minutes late for a match, she must forfeit her match.
4. If a participant cannot play at the scheduled time, she is responsible for contacting her opponent and arranging to play at a time previous to the scheduled time.
5. If a participant has rearranged her scheduled playing time, she should turn in her scores to Janet Cooke, Delta Gamma, or Miss Totten at the women's gym by the time she was originally scheduled to play.
6. The participants are responsible for contacting Janet Cooke or checking the schedule at the gym for the time of their next game.
7. When a participant finishes her match, she should contact Janet Cooke at the tennis courts,

Two Idaho Coeds Win China Prizes For Contest Entry

Two University of Idaho coeds today were announced as winners in the Annual Lenox creative table setting contest.

Karen Walker, Tri-Delt, was selected as one of the fourth place winners, and she will receive as her prize two five-piece place settings in her China pattern. Judi Slesper, Pi-Phi, was awarded a Lenox China tea cup and saucer for her entry, which was judged fifth place.

The contest was open to all women students and was handled through the Home Economics department. University students have participated in the contest for the past three years.

U of C. Attendance Made Compulsory

Freshmen and sophomores at the University of Connecticut are faced with compulsory class attendance this year. Under a new ruling, they're expected to attend all registered classes and if, for any reason, a Freshman's number of absences equals the number of credits for the course, his case will be called and reviewed.

Penalties will range from restriction and probation to suspension from the University. University officials think the new ruling will raise the standards of academic achievement among the freshmen and sophomores.

FOR HAIRCUTS

TISDALL'S

Barber Shop

Across from Theatres

Whatzat?



Here is another in the weekly Arg series of picture puzzles. This is not a glassed-in firing range. Answer on page 2.

Contest To Begin Wednesday For New ATO Esquire Queen

Candidates have been chosen for the 32nd Annual Alpha Tau Omega Esquire Dance which will be held Nov. 9 at the ATO chapter house.

The 24 candidates are Diane Shelton and Roxanna Jones, Alpha Chi Omega; Nancy Nicolin and Pat Maker, Alpha Phi; La Rae Harrop and Kay Sommers, Tri Delta; Neale Ward and Gale Guernsey, Delta Gamma; Mary Garnsey and Ramona Legg, Ethel Steele.

Marilyn Shull and Norma Brown, French; Carol Temple and Sheila Yarrol, Forney; Sonya Hoene and Cathy Thompson, Gamma Phi; Joyce Lillteten and Jill Laymer, Hays.

Fran Baudek and Carolyn O'Conner, Theta; Sue Livingston and Barbara Sande, Kappa; and Tonia Peterson and Sally Wilbanks, Pi Phi. Alpha Gam's have not yet selected their candidates.

ATO firesides will be held Oct. 9 and 13. The fraternity will entertain half of the group each evening. On October 16 and 20, the two groups will return again.

The five finalists will be selected Oct. 20 and serenades by the ATO's at their living groups that night.

Pictures of the finalists will be sent to "Esquire Magazine" for selection of the queen, which will not be disclosed until the dance.

The queen's picture will be entered in the national ATO Esquire contest.

Last years ATO Esquire Queen was Trenna Atchley.

AFROTC Names Two New Men To Faculty

New members of the Air Force ROTC staff include a graduate of the Idaho class of 1953, and a 1951 graduate of Montana State College.

Lt. Donald L. Carns was graduated from Idaho University in 1953, and since then he has been with the Air Force on duty in the Philippines. Carns is originally from Coeur d'Alene.

The other new staffer, Capt. Donald C. Hanto of Sidney, Mont., has spent the past three and one-half years in England as a pilot of a F84 Thunder Streak fighter-bomber.

Alice's BEAUTY SHOP

"Appearance Begins With Your Hairdress"

FOUR OPERATORS TO SERVE YOU

Phone 2-1384

208 S. Main Moscow

Blood Drive Quota Set At 850 Pints, Work Starts

Blood Drive officials Wednesday got machinery in motion for Idaho's annual late-October campaign, presently slated to add at least 850 pints of blood to a depleted Red Cross supply.

Drive co-chairmen Elaine Hieber and Jim Golden said 13 subcommittee chairmen, which were approved at an Exec Board meeting Tuesday, were briefed on the general goals of the campaign, set for Oct. 29-31.

Miss Hieber said the group named house representatives to the committee and added that the living group delegates would meet with the central committee at 7 p.m. Tuesday.

Golden said Boise Regional Blood Center Director Dr. E. F. Sistro had informed him that supplies for the vital fluid had dropped to a low ebb in the Idaho district.

"The need is not critical yet," Golden said, "but local drives have brought poor response this summer. Dr. Sistro hopes that Idaho will go over the quota as it traditionally has, and in the process do a public service."

Goal this year is 850 pints, he said, compared with 1200 last year. The publicized goal, however, was far above an "actual" mark anticipated by planners. Donations last fall totaled 880 pints.

The co-chairmen said last week the 850-pint goal was aimed at "taking some pressure" off living groups "who would be shooting for an impossible mark."

The Drive will be centered around a theme, yet to be decided upon, Miss Hieber said. Traveling groups will visit all houses prior to the opening of the campaign.

Committee members approved by the Exec Board Tuesday included Jan White, Kappa, and Bert Allen, Beta, entertainment; Marian Dunning, Delta Gamma, publicity liaison; Annette Manser, Theta, and Mike McNichols, Phi Delt, facilities; Dan Gerphiede, Sigma Chi,

military; Cathy Cannon, Pi Phi, competition; Jamie Smith, Pi Phi, and Jo Petrashek, Theta, personnel, and M. J. Caldwell, Kappa, secretary.

NOTICE

Freshmen and transfer students below junior standing who entered the University for the first time this fall and who missed part of the freshmen guidance tests should report to the Student Counseling Center to arrange for a date to complete them.

Those who did not take any of these tests should report for testing Saturday, October 19, at 8 a.m. in Room 104 of the Administration Building. Those who are uncertain as to whether or not they must take these tests should contact the Student Counseling Center.

Registrar Reports Top Enrollment

Latest registration figures received from the office of Registrar D. D. DuSault set the official enrollment total at 3767 students. This is the largest enrollment to date, topping last year's total by an even 50.

The student holding the highest registration number this year is Walter Cranston, a junior from Boise.

"My roommate says there are some things a girl should not do before twenty."

"Well, personally, I don't enjoy a large audience either."

Blue Key Ends Fall Applications To Membership

Today is the final date for turning in applications for membership in Blue Key, national upperclassmen's service honorary, Jack Cole, president, said.

Students will be selected to join the organization early next week. Tapping will be later on in the week during the evening meal.

Cole said junior and senior men interested in being tapped for membership should turn in an application at the ASUI office that should contain a list of the student's activities, grade average, class, living group, and organization memberships.

There are now 28 members in the Idaho chapter, which holds selection periods for members in the fall and spring of each school term.

The local chapter is one of over 100 chapters in the national organization which is established for the principle of organizing efforts among student leaders in American colleges and universities.

It works to develop citizenship, intellectual attainment, leadership, and a desire to serve among its members.

There are some things a girl should not do before twenty."

"Well, personally, I don't enjoy a large audience either."

The student holding the highest registration number this year is Walter Cranston, a junior from Boise.

EVERY FRIDAY

5:30 p.m. to 9:00 p.m.

SMORGASBORD

Delicious Hot

- *PRAWNS *SCALLOPS
- *OYSTERS *HALIBUT
- *SCALLOPED POTATOES
- *MACARONI & CHEESE
- *SPAGHETTI & MEAT BALLS
- *SPANISH RICE
- *BAKED BEANS
- *COLE SLAW
- *MOLDED & GREEN SALADS
- *ASSORTED DRESSINGS
- *HARD ROLLS & COFFEE

Adults \$1.50
Children 75c

In The Beautiful New Dining Room!

Washington Hotel

PULLMAN

Laundry done the way you like it! Specials on request

Phone 3-3261

Keepsake

DIAMOND RINGS

INTERLOCKING RING SETS

PRESTON \$300.00
Also \$400 and 500
Wedding Ring \$125.00

Rings enlarged to show details
Prices include Federal Tax

CORNER DRUG & JEWELRY

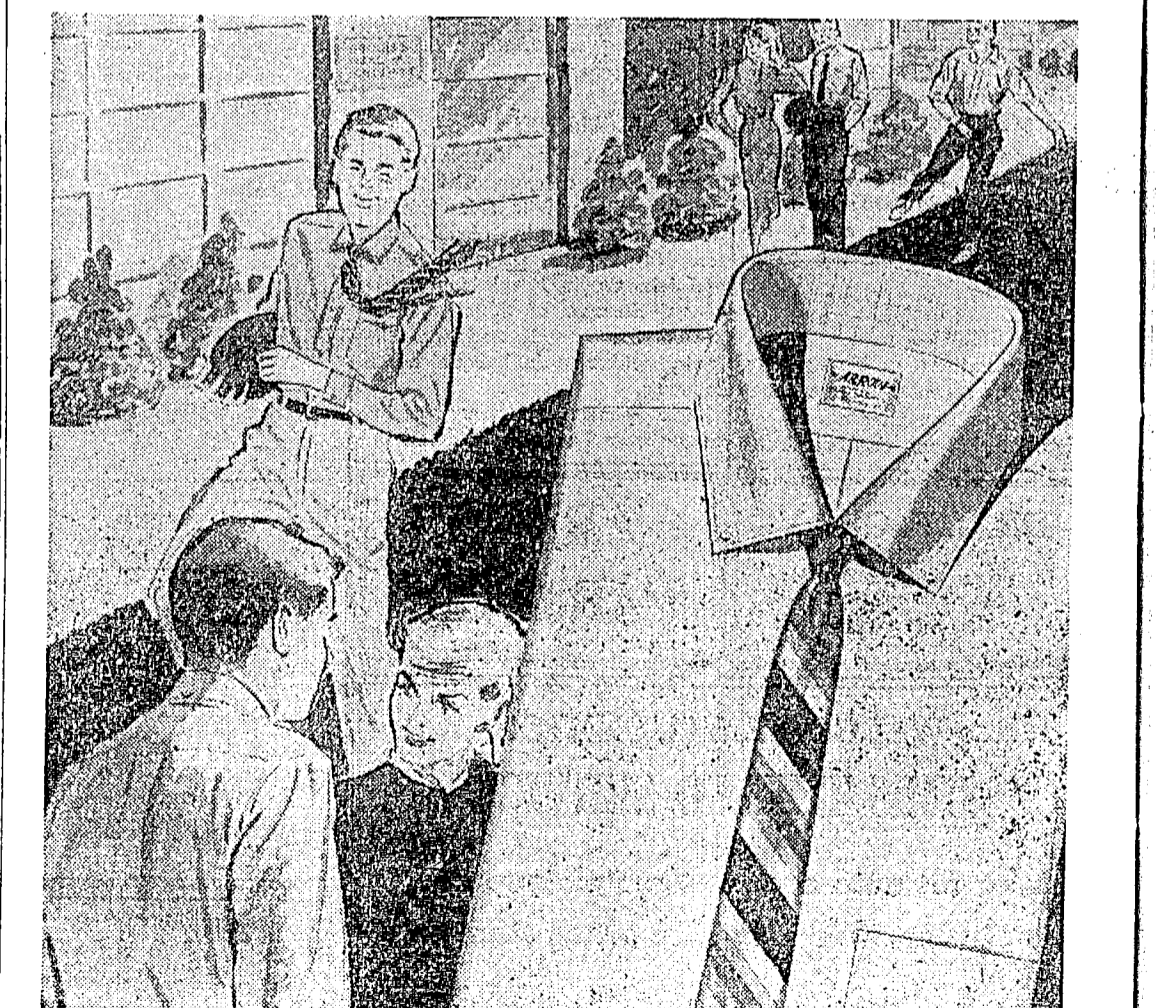
3rd & Main

For the Finest in Steaks, Sandwiches, and Drinks

Stop Soon at

JOHNNIE'S

226 W. 6th



Great catch... *University Glen* Shirt in exclusive new Arrow Cambridge Cloth

Your favorite button-down, the *Arrow Glen*, is now styled in traditional collegiate fashion. It's offered in feather-soft Arrow Cambridge Cloth—a new partner in popularity to the classic Oxford. Collar buttons down, front and center back. Full length box-pleat

in back. In solids, checks and pencil-stripes. "Sanforized" labeled. From \$5.00. The \$2.50.

ARROW

Shirts and Ties

Welcome Students

Let Us Serve Your Insurance Needs

WEISEL

INSURANCE AGENCY

106 North Main Ph. TU 2-1404

Think First of Hutchison's For

WE SERVE YOU IN MANY WAYS — **Portrait Quality**

- * Your Annual Sitting — — — —
- * Your Queens and Special Portraits — — — —
- * Your Gift and Christmas Portraits — — — —
- * Your House Group Pictures — — — —
- * Your Activity, Promotional and News Shots — — — —
- * Your Dance Photographs — done in high grade Portrait Quality.

THERE CAN BE NO COMPROMISE FOR QUALITY — So think first of Hutchison's for Portrait Quality.

Main & 3rd "A Studio With A National Reputation" Ph. 2-7261

Wesley Foundation To Picnic Sunday

Games, food and fun are slated for this Sunday when Wesley will hold a picnic in honor of the freshmen. Everyone is invited and asked to be at the Campus Christian Center at 3:45 p.m. Dress will be pedal pushers and levis. In case of rain the picnic will be held in the field house rather than in the Arboretum.

New officers elected at the last cabinet meeting are Linda Edwards, secretary; Jehu Steele, 2nd worship commissioner; George Colvert, 2nd publicity commissioner; and Paul Barnes, Wednesday coffee hour chairman.

Students are especially invited to attend the 10:30 p.m. to 11:00 p.m. between-service coffee hour at the Methodist Church.

Wesley holds a coffee hour each Wednesday at 4:00 p.m. at the Campus Christian Center. Everyone is invited.

College forum meets every Sunday morning from 9:30 p.m. to 10:30 p.m. at the Campus Christian Center.

LUTHERAN STUDENTS ASSN.

"What College Will Do To You" is the topic to be presented by a panel of members at the Sunday evening meeting. There will be a group participation with the panel on various points of attitude which will be presented. The meeting will begin with dinner at 5:00 p.m. at Our Savior's Lutheran Church.

Officers and committee members for the retreat will meet at the center at 8:15 Saturday morning. They will go to Pullman for a joint planning session with the WSC LSA.

There will be a coffee hour at the Campus Christian Center from 4:00 p.m. to 5:00 p.m. Friday afternoon.

LDS CHURCH NEWS

MIA will begin at 7:30 p.m. instead of 7:15 p.m. as last time. A special speech program has been planned.

CANTERBURY CLUB

Canterbury Club extends its welcome to the Rev. Harold Fleharty, new Idaho chaplain.

First of Thousands



Student workers Mike McQuade and Lee Shellman, under the direction of Edmond Gnoza, assistant librarian, shelve the first of 148,000 volumes that will be housed in the new University Library. Librarian Lee Zimmerman said today the \$1,500,000 building was tentatively scheduled to open the week of Oct. 15-19.

Open house was held last week so all new students could get acquainted with the club, its members, and goals. St. Mark's Altar Guild served punch and cookies.

During the first meeting Sunday, Canterbury members suggested topics for future discussions. Mr. Fleharty announced that meetings will be Wednesday morning at 7 weekly and evening coffee hours the first and third Tuesday of each month.

ID CARDS AVAILABLE

Gale Mix, ASUI general manager, said Thursday that about 1000 student identification cards still haven't been claimed. The cards for students who registered late won't be ready for distribution until next week, he added.

"Why is that black shroud on your roommate's bed? Did he die?" "Shroud, hell. That's his top sheet."

Veterinary Barn New For Research

A new \$20,000 Veterinary Research barn has been recently put into operation on the University farm, Dr. Ronald D. Ensign, associate director of Agricultural Research stations said today.

Ensign said the barn is the first facility on the farm which will enable the Veterinary Science Department to conduct its research programs.

"Do you know who was the first electrician?" "Adam. He furnished spare parts for the first loud speaker."

Rooms For Men

DESIRABLE FURNISHED

303 EAST 3rd ST.

Phone 3-3913

Announcer Slate Released For 'Voice Of The Vandal'

Announcers for KUOI, the "Voice of the Vandal," and the times they will be on the air, were released today by Ed Seielstad, station manager.

A meeting of old and new personnel for the radio network is set for Monday evening at 7:30 in KUOI's office in the SUB, he noted.

"Announcers should contact me at the station before they go on the air," Seielstad said. "They must have a brief instruction on the use of the control board."

Broadcasting will begin at 12:30 p.m. Monday.

Included on the head staff are: Bill Vermillion, record librarian; Bob Fields, program director; Dale Nelson, production director; Ken Marnock, publicity; and Bob Gese, chief engineer.

Tentative program schedule for announcers is Monday, Gary Kleinkopf, Sigma Chi; Pete Johnson, off-campus; Bob Bernard, Delta; Bob Pierce, Sigma Nu, and John Fabie, Gault.

Tuesday: Ken Powell, Kappa Sig; William Campbell, Sigma Chi; Dave Lefauour, Chrisman; Ken Marnock, and Bob Johnson, Sigma Chi. Wednesday's slate is: Bill Stairs, off-campus; Gale Merrick and Richard Tefft, Sigma Chi; Roger Manning, Willis Sweet; and Gene Smallwood, Delta Sig.

On hand Thursday are Jerry Weston, Sigma Chi; Mick Seeber, Delta Sig; Laddie Taylor, Lindley; Gary Dossett, Sigma Chi; and Seielstad, off-campus.

Friday's announcers include: Dave Laws and Vermillion, Ugham; Dale Nelson, Willis Sweet; Warren Wubker, Ugham; and Larry Ayer, Sigma Chi.

Alternate Announcers Alternate announcers being held in reserve are Jerry Noyen, and Glen Ingalls, Phi Delta; Tom Hennessy, off-campus; Clint McDonald, Phi; Gary Wolverton, Sigma Chi; and Kenneth Durk, Willis Sweet.

Programs will be announced in next week's Argonaut. Seielstad

Army ROTC Staff Listed

A graduate of the University of Idaho returned this year to take command of the Army ROTC detachment here.

Col. Glenn B. Owen, a graduate of the class of 1936, has been assigned for a four of 36 months on the Idaho campus. He was previously on the Army staff at the Pentagon in Washington, D.C.

Other new members of the Army ROTC staff are 1st Lt. Eugene B. Nabell, a graduate of the University of Florida, who comes here from an assignment at Fort of Whittier, Alaska. Also, SFC Gerd A. Remus from Fort Ord, Calif., and SFC Paul McElroy from Fort Richardson, Alaska.

News casts will still be heard on the campus network.

Modern Set Adds Festive Mood In First Production

A winter garden in spring is the setting for "Ring Round the Moon," the first ASUI dramatics production of the fall term, slated for a two-night stand, Oct. 18-19, in the Ad auditorium.

A winter garden in spring is the setting for "Ring Round the Moon," the first ASUI dramatics production of the fall term, slated for a two-night stand, Oct. 18-19, in the Ad auditorium.

Stage crews have been working every evening this week on flats, and properties in preparation for curtain time, now only two weeks away.

Under the guidance of Howard Dorgan, assistant drama professor, the crews have worked quietly and efficiently on building a modern set that will give the audience a "festive mood" as they watch the play.

"The stage in 'Ring' has a light airy set with a lot of greenery and plants in the garden to gain a festive mood," Dorgan pointed out. "The ball room party scene is a

good example of this. Lighted Japanese lanterns and gay party decorations are used during that act."

About three-fourths of the stage is a glass wall that affords a view of the lawn that leads down to the lake, Dorgan noted. The rest of the indoor garden is walled in by an intricate mesh work that has ivy climbing up it.

Roman brick tiers are up stage and all the way around the bottom of the walls. A fountain is located on the left, down stage, and a rock

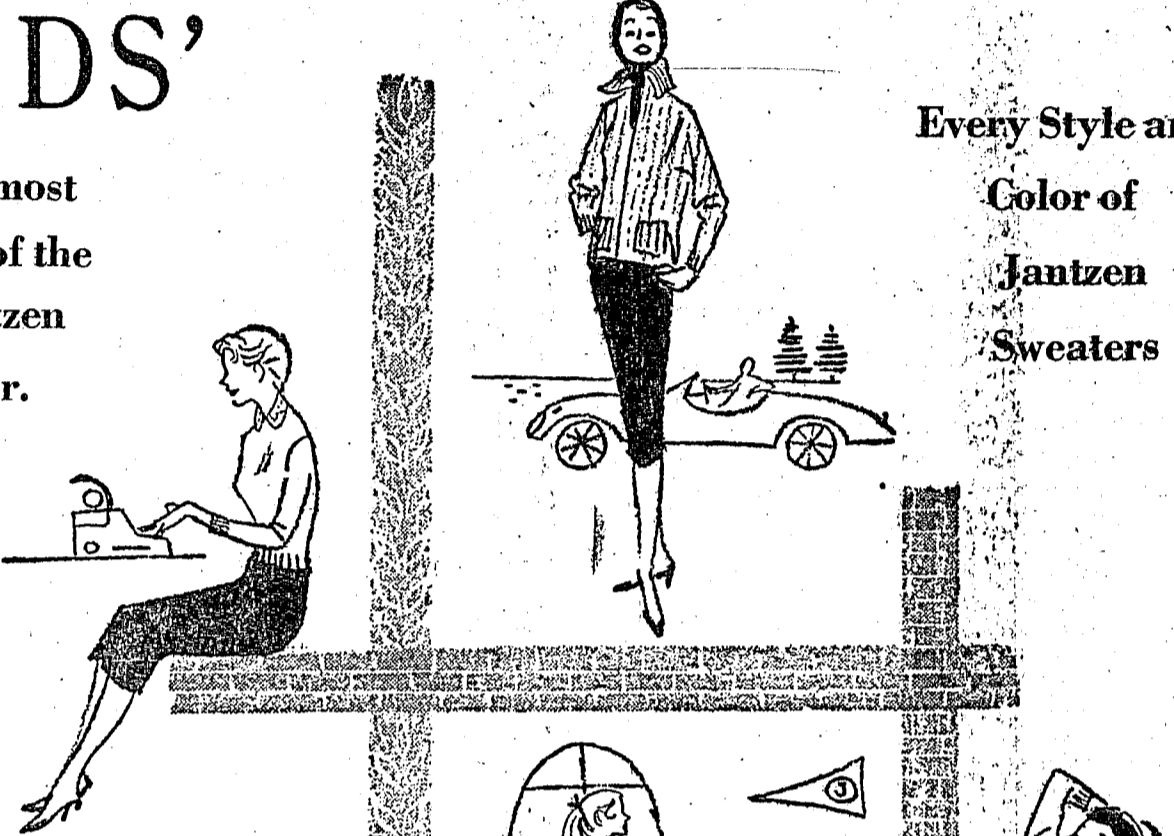
Other actors will use the brick steps, the rock bench, and the fountain as places to sit in place of any chairs, she said.

Stage Manager, Cliff Cook, said, "The set should look very good on stage. A number of things can be covered up by lights, such as poor color on flats, poor workmanship on some props, and the like."

DAVIDS'

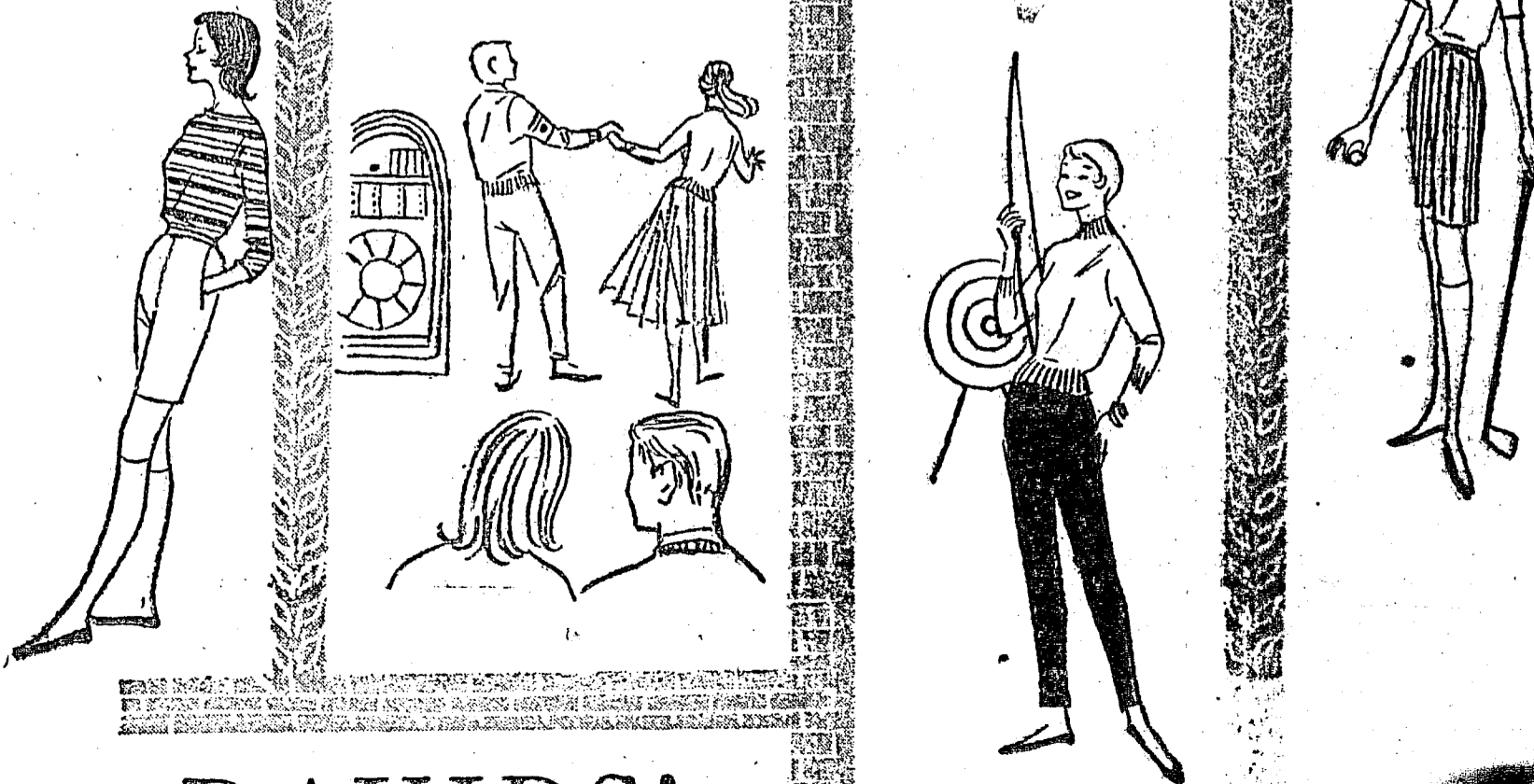
Is showing a most complete line of the famous Jantzen casual wear.

Only at Davids'



Every Style and Color of Jantzen Sweaters

Jantzen



DAVIDS'



Pepsi-Cola refreshes without filling

Light, dry (not too sweet), reduced in calories. Have a Pepsi.



Pepsi-Cola The Light refreshment

IDAHO BEVERAGE CO. 200 4th Ave. North Lewiston, Idaho

RENT BEFORE YOU BUY

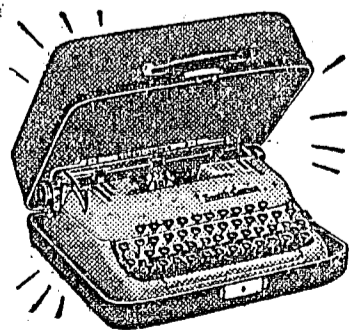
A NEW

Typewriter

FOR

17c a Day

Your Choice of any of the three popular makes for only \$5 a month. Rent applies on purchase if you decide to buy.



MOSCOW'S ONLY STORE SHOWING ALL THREE!

Royal Remington Smith Corona



