

'New' Old SUB From Front



Sub Expansion Starts In August

By GARY RANDALL
Argonaut Editor

It's for sure now, or at least as sure as anything concerning money is... come August, construction is definitely going to start on the much-discussed Student Union Building expansion.

Starting back in January of 1956, talks, more talks, and finally, general approval of the SUB expansion have gone on. The 1956 SUB board began planning, resulting finally in June, 1956 of an Executive Board recommendation to University President D. R. Theophilus covering financing and city approval of the expansion. Since then, things have sped, and drug along.

The Board of Regents stepped into the SUB picture in 1957, selecting an architect firm to develop the building plans. For the 1957-58 school year the SUB board met bi-weekly with architects.

The official go-ahead came from the Board of Regents in September of 1959.

Last year, efforts were made by a group of students to halt, and re-examine the expansion proposal. A somewhat bitter fight followed, but the SUB program rolled ahead.

1963 Target
In December of 1963, final work on the bookstore is to be completed, the last step in the construction plan. The program calls for adding to the size of the present SUB by building the bookstore flush with the SUB "fish-bowl," and extending a new section some 100 feet onto the present site of the parking lot.

Included in the program is a general doubling of the size of all present facilities, along with around a dozen new multi-purpose features added.

The addition and renovation of the present SUB space is aimed primarily at the present and expected student increase on the campus.

Recreation Expanded
In the recreation area of the SUB, for example, four more alleys will be added to the bowling facilities, with room for four additional lanes in the future. The extra space will at first be utilized for a glass enclosed billiard and pool table rooms. Eight tables will be installed.

Adjacent to the billiard room, a table tennis room with four tables will be set up.

The new arts and crafts area is designed to furnish a room for poster making, working on crafts, printing and duplicating materials and special equipment.

The Bookstore, originally scheduled to be moved to the basement, now will remain at its present site. Construction moving the front of the bookstore flush with the SUB fishbowl will eliminate its present overcrowded condition.

The cafeteria, presently packed during rush hours, will also be expanded. A special family dining room, designed to permit students to eat with visiting parents to the present Pine Room will be added.

In addition, four rooms similar to the present Pine Room will be incorporated into the building. The rooms will be used for no-host luncheons and or meetings.

SUB Info Booth
Plans to operate a SUB information booth have been retained, the booth located in the main lobby across from the enlarged General Manager's office.

The TV lounge which is presently situated in the SUB lobby will be moved to the basement, with first floor facilities for Hi-Fi and Stereo rooms an added feature.

Presently located on the second floor, the Dipper will find a new

home in the SUB basement, gaining more of a night-club atmosphere. A small stage for Jazz in the Bucket, and self-service automation food facilities will be new.

Also in the Dipper's new site, television hookups for World Series, Astronaut trips, or presidential election results will add extra space for TV viewers.

Plans Discarded
Incorporated in the original plan, an ice-skating rink, open terrace, and terrace pool have been discarded in subsequent planning.

Space for student organizations and student government offices will be provided on the first floor in a long room which can be divided into areas of the desired size. The Alumni offices will be separate.

Campus organizations will be planned for also. Storage space for files and equipment, complete with lockers for each group, work tables and bulletin boards will be provided. A conference room to be used by the ASUI Executive Board and SUB boards for meetings will round out the office space.

Earlier ideas for an Auditorium have been eliminated in the present, and final drawings. The Borah theatre will not be expanded, as was previously the plan, but will be done with a view to increased comfort.

The Argonaut office, scheduled to double in size, will be in the basement.

More Meeting Rooms
Seven new meeting rooms are outlined in a remodeling plan for the present SUB ballrooms. The entire area will be made into three multi-purpose rooms which can divide or enlarge into the size desired, through the use of folding doors.

Another large room with an accordion type partition about the same size as the present Conference rooms A and B on the third floor is planned.

Ballroom space will also be increased, bringing the floor area to a size large enough to hold all campus dances, including the Jr.-Sr. Prom.

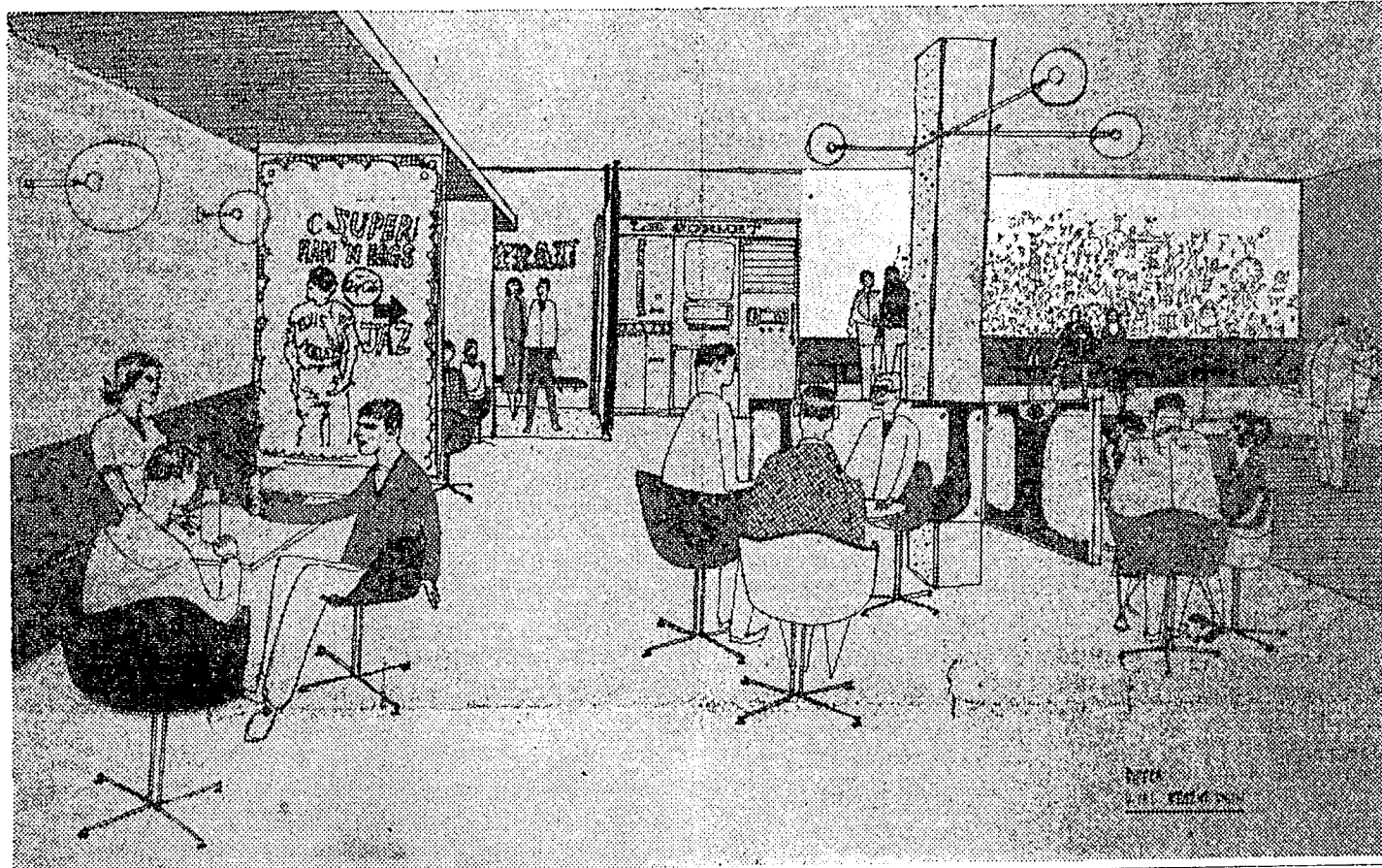
Idaho Argonaut

VOLUME 65, NO. 50

UNIVERSITY OF IDAHO, MOSCOW, IDAHO

Friday, May 5, 1961

New Dipper



Modern Office For Argonaut

Two years from now the hectic process of putting together the Argonaut will take place in a modern office over twice as large as the present and will greatly resemble a modern professional newspaper office.

The new facilities will be in the new addition and will include a large newsroom, especially designed with the advice of professional newspaper men and Argonaut editors, to facilitate the flow of copy in an efficient manner.

Another much needed feature will be built-in filing cabinets, which are almost non-existent in the present office.

Gale Mix, ASUI general manager, said that after construction was completed, professional news men will be called in to advise on the placement of desks, and other necessary articles.

The Golden Fleece

Things are booming as far as campus construction goes, and things are going to be booming even more next year. Within four years, one new fraternity and two new sorority houses have been built. A modern, spacious library has been finished, a mining building is in the process of construction.

And with the Science Building coming up in the near future, the academic and living side of the building story is pretty well taken care of.

Social Angle
The SUB, virtually the hub of social activity on the campus for most students, is not so slowly overcrowding. Center of many state conventions, home of virtually all student organizations, the SUB holds an important place in the life of a University.

So when student numbers increase, the SUB size has to increase also.

Today's issue of the Argonaut covers some of the high points. This page, and page three, are devoted to the addition. The story, however, will come in the next three years of construction, and following years of use.

Idaho's SUB is going to be something to be proud of.

Self-Service In Bookstore

When Idaho students return to school in the fall of 1964 and start buying their books for the next semester, they will be serving themselves in a new bookstore with a vastly increased sales and display area.

The present bookstore will be completely torn down and a new structure erected on the same site. The new store will come completely out to the sidewalk, thus adding valuable space. The increased sales area will allow the display of 2500 paperback books, which has been impossible before now because of cramped quarters.

Another planned feature is to make the store self-service, with only one clerk being needed at check-out stand. This will reduce the costs somewhat of the articles being sold in the bookstore.

12.50 Fee Hike Set This Fall

By NEIL LEITNER
Argonaut Associate Editor

Accompanying the building of the new SUB, Idaho students will find an additional \$12.50 tacked onto their registration fee.

The new fee, which will go into effect this fall, will hike the total student contribution, per semester, to \$77. This figure is still below schools comparable to the University of Idaho.

"We're lucky we weren't saddled with a raise of \$25," said ASUI General Manager Gale Mix, "by all rights it could've very well have gone up that high."

The added \$12.50 will go directly to the Student Union Building, for financing and operation. It will bring in an estimated additional \$50,000 per semester.

Total cost of the proposed building, scheduled to first break ground in the fall, will approach \$2,113,800.

Cost
The building itself will cost \$1,725,000. Its further monetary components are broken down into three categories:

Movable equipment will cost \$142,000, and the call of outstanding bids on the old building will run another \$240,000. Miscellaneous expenses are estimated at \$6,800.

The loan will be paid off in 1991, according to the University's publications department.

The last fee increase was from \$59 to \$65, and then it bounced down to \$64.50. The drop of 50c was due to an insurance rebate.

"Evidently, Idaho students seemed to be good insurance risks," commented Don Walker, assistant publications director.

According to a survey compiled by the Oregon System of Higher Education two years ago, the University of Idaho ranked 27 out of 27 in the cost of student fees and tuition charges.

Noise Will Hamper SUB

Noise and some degree of confusion may hamper groups meeting in the SUB after September, 1961, through December, 1962, Gale Mix, General Manager, has announced.

Mix said student meetings will not be affected by the noise for they usually occur after 4 p.m. Rooms on the north side will be used as little as permissible during the day, he said.

Special Decor In Planned SUB Addition

A transitional theme of interior decoration will dominate the design of the new SUB addition, scheduled for completion in the fall of 1963. This motif is especially good for a building of this permanence, Charmaine Fitzgerald, SUB Program Director, said recently, for it will lend itself to style changes through the years.

The use of glass in the new building will be striking, she said. Full length sliding doors will open behind concrete columns into an open-air terrace on ground floor.

Many of the rooms, including the new Argonaut offices, will contain compartments entirely glassed in.

Probably the showpiece of the SUB will be the first floor lounge and other rooms which will be immaculate in their appearance. The lounge will be furnished in cherry wood which will carry through on the walls and the chairs. The chairs will be covered with fine yet durable leather over goose-down. In the center of the lounge will be a large sculptured piece. All furniture will be custom made.

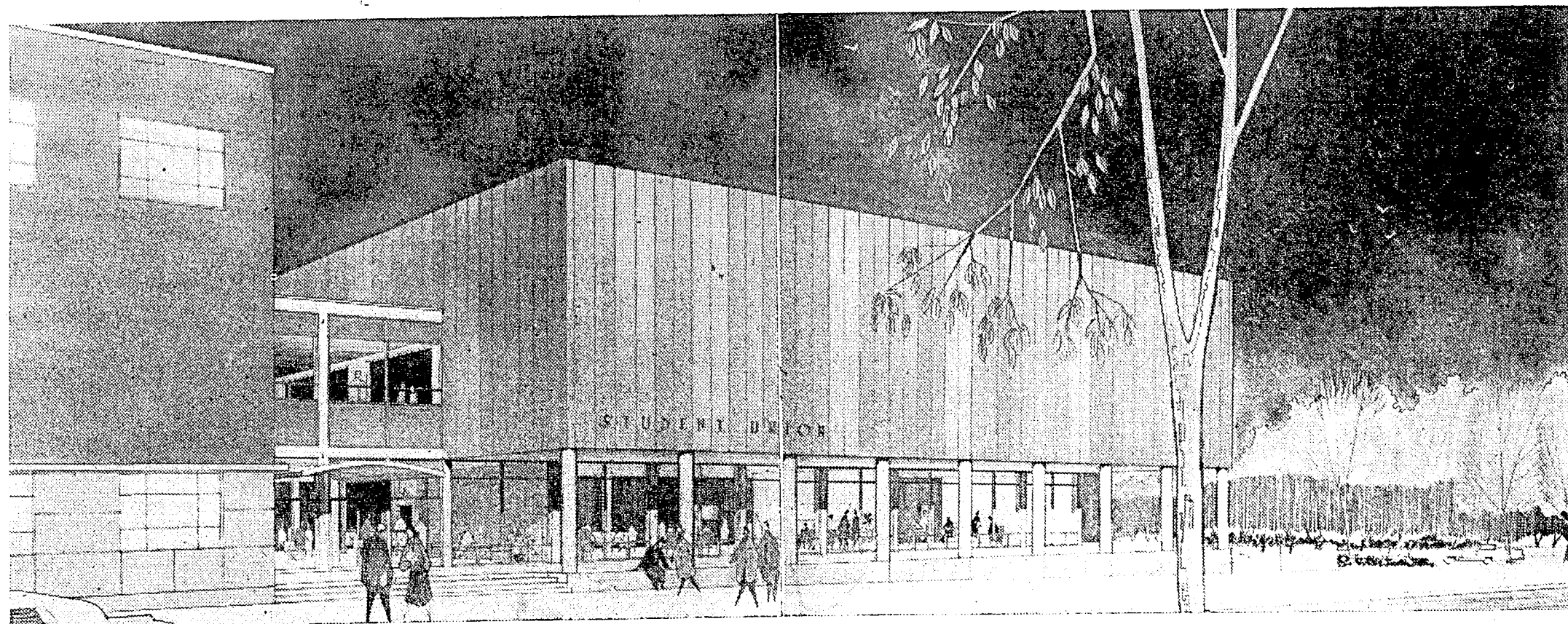
Closer to the all-glass entry-way plans call for a sheer wall of fine wood on which will hang several contemporary paintings. This entrance will be at the northeast corner of the present SUB structure, and will sport an 8 by 11-foot campus map.

"We hope students will be able to go through this part of the new SUB and come out with an education in some of the best ideas in decoration," Mrs. Fitzgerald said. "Mr. George Schwarz, the interior planning consultant and designer from Portland and San Francisco is doing the work. He was here about three weeks ago."

In the basement will be the new Dipper, she said. It will be next to the Argonaut offices near the present Theta Chi house. The present Argonaut rooms will be renovated into a family room where students may bring their parents to relax.

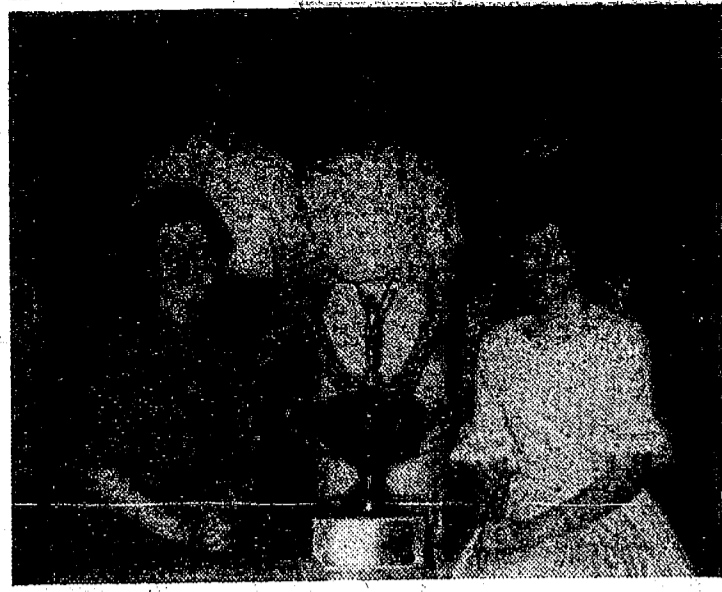
The main ballroom will be above the present SUB parking lot, and will encompass 11,900 square feet. It will contain a wide-screen for movies, flood lights, complete electrical sound system, air conditioning, a large stage, one large band stand and three smaller stands. It will seat about 1,500 persons.

'New' SUB Addition Front



Time Schedule

- July 5, 1961 - Contract advertised.
- August, 1961 - New Building started.
- December, 1962 - New Building finished.
- December, 1962 - Old building renovated (except cafe, fountain, cafeteria).
- May, 1963 - Cafe, fountain, cafeteria, bookstore construction begins. Bookstore temporarily moved to new building game room.
- September, 1963 - Both old and new construction completed.
- Dec. 1965 - Bookstore completed.



DREAMER — One of five of these winsome coeds will be crowned "Dream Girl of Delta Sigma Phi" Saturday night at the Delta Sig dance. Competing are, left to right, front row: Anne Wood, DG; Joan Murphy, Alpha Chi. Back row, left to right: Sharon Trenary, Forney; Carol McCrea, Alpha Phi; Judy Brown, Gamma Phi.

Is He Next?

A person can get just about any kind of opinion about the Eichmann trial just about any place in the world. Some are saying the Germans wish the trial wasn't happening, or that they want as little connection with it as possible. The people of Israel are beginning to wonder what they are doing with the trial in their country, and if Eichmann is convicted what could possibly be his sentence. The whole world wonders what sentence Eichmann should receive if he is convicted. Yet while the whole world watches, one person surely must be watching as if he

were on trial, as well he might be in the future. This person is playing the same role as Eichmann did in World War II. He is killing people willingly, but as he will put it at his trial later, "I was only following orders from a superior." This person is committing "crimes against humanity"—crimes for which there are no sentences or punishments to fulfill the debt to society. This man will watch. He will watch with more feeling than anyone in the world. For this man, whoever he is, is at the head of Castro's firing squads.—Montana Kaimin.

Dear Jason

Prom Story Hit

This letter is to inform the students in regards to the Junior-Senior Prom of April 29, 1961. The Argonaut, as usual, has managed to make several rationalizations about the entire affair, and therefore, failed to give the students a true picture. We are not sure where N.L. (whoever that is) got his scoop story, but from our point of view it must have been in left field.

Our opinions on this disorganized function are those seen from a neutral position. We are in full agreement with the Argonaut on this statement, "apparently the blame for the fiasco rested largely on the shoulders of General Artists Corporation, the booking agency which managed to cause the mass confusion." However, we feel that this is no excuse for the discourtesies shown Si Zentner and June Christy, which showed very poor public relations on the part of the entire University of Idaho.

The blame for this can be, without any doubt in our minds, placed on the class officers in charge of the dance, who managed to perform one job during the evening, that being to present the band with their personal mail before suddenly disappearing and leaving their delegated responsibility of informing Mr. Zentner and Miss Christy of the breach of contract in the hands of an innocent bystander. This person being Don Wenzler, whose actual job is handling ticket sales for the A.S.U.I.

We realize that the job of being a class officer is very complex, especially this particular year due to the bad weather and the additional burden added by the opening of Shakey's Pizza Parlor. We were present when the letters from the General Manager's Office, which stated that there had been a breach of contract and that they would not be paid for their evening's performance, were handed to Si Zentner and June Christy.

Si Zentner's reaction to this was he would not play unless paid the remaining sum. This was the cause of the 45 minute delay during which a phone call was expected at 8:30 from a person in authority to give permission to begin or cancel the dance.

When this call arrived at 8:40 p.m., Don Wenzler was directed to inform Mr. Zentner that he wasn't to be paid and was definitely not to play. Mr. Zentner's response was, and we quote, "the students are here to dance and I am not going to wreck your Junior Prom. I am going to start to play and you stop me!"

We feel that the remarks made by Si Zentner from the stage during the evening were not entirely justified as he definitely went overboard with his wit; however, if he had walked out at 8:45 p.m., how could the dance have continued at all?

On the other hand, Miss June Christy's reaction to the letter was that according to the contract which she had with her, and which we read, the letter in no way pertained to her. Her contract from G.A.C. stated that she would do a two-hour concert from 8 to 10 p.m. in front of an audience at the University of Idaho.

Miss Christy was ready to begin her show at 8 p.m.; however, due to the confusion which had developed, she was waiting to hear the results of the previously mentioned phone call.

Leaves After being informed at 8:45 p.m. that she would definitely not be paid, she could see no reason for remaining in Moscow, Idaho, for the remainder of the evening. She felt that she had a fine show prepared and was disappointed in not being able to make her contribution to the Junior Prom after flying from Los Angeles to do the show.

Miss Christy had originally planned a tour of several more colleges, but due to the mess at Idaho with G.A.C. she decided to return to Los Angeles. She was escorted by private car to Spokane along with her piano accompanist and was going to fly directly to her home in California. This should clarify the "factual" statement made by Tuesday's Argonaut that she had an urgent appointment in Spokane Saturday night.

After five years of the U. of I., we are convinced that there is room for improvement in the editorials of the Idaho Argonaut. The attempt by N. L. was about par for the course as we see it.

Chub Anderson Tom Benjamin Anderson accompanied Miss Christy to Spokane, possibly picking up what would be termed "her side" of the story. As a rather pretty and talented celebrity, she possibly added weight to Anderson's views . . . Ed. Note.

Dear Jason

The sidewalks, it has proven itself invaluable in getting the late risers and slow eaters to lab on time. No one seems to know exactly when this path was blazed. Maybe Professor Rolland can tell us from his extensive studies of Northwest History.

The coeds have fond hopes that someday there will be some male students (besides Tekes) brave enough to try this hazardous route. Kip Peterson

IBPT Thanx DG's

Dear Jason, The University of Idaho Bed Pushing Team, not the Lindley Hall group, but the distance record holders, wish to publicly thank the Delta Gammars for a wonderful dinner last Wednesday. I express the opinion of every member of our team in saying that we enjoyed the DG hospitality and charm, as well as the good food.

David Richey

Lib Vs. Conserv.

Dear Jason, This letter is written to clear up a misunderstanding that has arisen in regard to the CUP-planned Liberals vs. Conservatives round-table discussion. The Campus Union Party has relinquished sponsorship of this discussion to the National and World Affairs Club.

The discussion will take place on Wednesday, May 10, and will feature seven very qualified students and faculty members as speakers. We encourage all students to participate in this informative event.

CAMPUS UNION PARTY Bob Plumb, President Tory Nelson Jim Judd

Home Grounds Needed Andrews indicated that students talking on their "home" grounds, college, were more willing to point out the problems that could be

eliminated by improved high school work. In the past, student graduates have been contacted during the summer months and queried about their training and its value in college work. This program, Andrews felt, was weak as students were often hard to contact, and sometimes reluctant to freely express their views in the school office.

More To Program Andrews and Larson stressed that the college aspect of the interview program was not the complete picture, however, with a survey also being taken of students

who do not come to college. This program also is being undertaken by progressive school leaders. Kellogg has been noted for being one of the top prep schools in the state, its relatively unique program of accelerating exceptional students rated highly by educators. Under the Kellogg plan adopted in high school in 1956, gifted students are placed in a special division, separating them from their somewhat less speedy classmates. This enables the faster student to move on quickly and his slower counterpart to receive extra attention.

Auditor Here For Lecture John A. Terhaar, general auditor for the Boeing Company, Seattle, will address University students in managerial accounting controls classes May 4 and 5. The visiting lecturer on internal auditing will speak Thursday at

7:30 p.m. on purchasing and materials control and at 8:30 p.m. in internal auditing at Boeing. On Friday at 8 a.m., Terhaar will cover relationships with public auditors and at 11 a.m., auditing of fixed assets.

Personal Interview Program With Grads 'Terrific,' Kellogg School Leaders Say

One of the most progressive of Idaho Panhandle high schools has started a program even more progressive . . . asking the graduates how to improve courses and training.

Kellogg high school Superintendent Howard Andrews, and Principal George Larson set up shop in the SUB Frontier room yesterday, following an extensive invitation program to Kellogg graduates. Then they began discussion.

The program, the first of its kind at Idaho in recent years is aimed at the students themselves, the graduates outlining the good points of their prep school education that prepared them for college, and the bad points, or weaknesses, as well.

"The results have been terrific," Andrews commented, add that the first hours spent in yesterday's day-long session more than made the time and expense of the program worthwhile. "All high schools could profit from this type of thing," he added.

According to Andrews and Larson, three main points had already come out of the discussions by noon yesterday.

Guidance Needed Student graduates indicate that more and complete high school guidance and counseling is important, with guidance possibly extending back as far as the freshman high school year.

More theme writing was also stressed by the graduates. The majority of the students felt that high school teachers should be allowed the time to do fine-tooth grading of high school themes, thus preparing them for the stringent college work ahead.

Finally, speed in reading and comprehension should be stressed, according to the graduates. Classics might best be stressed and high school speech was rated as being definitely helpful.

Besides helping college students adjust to oral reports, the speech work helped students to organize their thinking for theme writing.

The program is used extensively in other states.

Home Grounds Needed Andrews indicated that students talking on their "home" grounds, college, were more willing to point out the problems that could be

Auditor Here For Lecture

John A. Terhaar, general auditor for the Boeing Company, Seattle, will address University students in managerial accounting controls classes May 4 and 5. The visiting lecturer on internal auditing will speak Thursday at

7:30 p.m. on purchasing and materials control and at 8:30 p.m. in internal auditing at Boeing. On Friday at 8 a.m., Terhaar will cover relationships with public auditors and at 11 a.m., auditing of fixed assets.

The Idaho Argonaut

Member Associated College Press

Official publication of the Associated Students of the University of Idaho issued every Tuesday and Friday of the college year. Entered as second class matter at the post office at Moscow, Idaho.

Table listing staff members and their roles: Editor (Gary Randall), Associate Editor (Neil Letner), Managing Editor (Sharon Lance), News Editor (Lee Townsend), Ass't News Editor (Herb Hollinger), Sports Editor (Neil Modie), Ass't Sports Editor (Jim Herndon), Women's Editor (Ann Spiker), Photo Editor (Walt Johnson), Asst. Copy Editors (Diane Hill, Judy Chapin), Copy Editors (Barbara Silvers, Sally Jo Nelson), Reporters (Bobbie Slaughter, Sharon Weaver, Jim Metcalf, Idona Kellogg, John Hutchinson, Marsha Buroker, Bridget Beglan, Sherry McGuire, Patty Beck, Rod Higgins, Larry McBride, Marshall Hauck, Hal Gustafson), Sports Writers (Sharon Weaver), Literary Editor (George Christensen), Features Editor (Marsha Buroker, Bridget Beglan), House Editor (Leo Ames), Staff Cartoonist (Dell Kloepfer, Mike Anderson), Advertising Managers (Barbara Silvers, Virginia Slade, Gureharan Singh, Virginia Slade), Copy Readers (Susan Arms, Sue Seivert), House Reporters.

Dr. Eugene H. Rothstrom OPTOMETRIST Hours: 9-5:30 Mon. thru Sat. 522 S. Main, Moscow, Idaho Telephone TU 2-1288

DR. J. HUGH BURGESS Optometrist Contact Lens Specialist Quick, Accurate Duplications in our laboratory O'Connor Building Ph. 2-1344

PDT Slates Race; Cruises In Offing

By ANN SPIKER Argonaut Women's Editor

The Chrisman Hall "Road-runners" have returned to Idaho to find the campus overrun with exchanges, dances, specialty dinners and plans for lake cruises and picnics.

OH WELCOMES TRAVELERS The Chrisman Hall "Road-runners," Dick Chelnie, Twin Falls, and Fred Gaudet, Cheyenne, Wyo., returned this week from their seven-month excursion south of the border.

An introduction to FarmHouse, questions and answers, and refreshments have been the program for several recent FarmHouse coffee hours.

The FarmHouse scholarship award, "Hector," was won by Julian Perez, Bruce Green, Dick Beier, and Jerome Jankowski.

ALPHA PHI GIVES TEA The Alpha Phi's were busy this week, what with the faculty tea on Sunday afternoon, an all-house exchange with Chrisman Hall Wednesday evening, and turn-about day Thursday.

ATO TO CRUISE Plans for the annual ATO cruise have been made. The entire house with dates will migrate to the boat docks of Coeur d'Alene Lake Saturday morning. Chaperones accompany the cruisers are Professor and Mrs. Russell Chrysler and Capt. and Mrs. George W. Orton.

SIGMA NU GIVES SWORD During a solemn and dignified ceremony, the coveted L.S.M.O. T.F. sword was recently presented to Joe Davis by Carl Berry, last year's proud possessor of the award.

Hasher Doug Elliot received a kitchen promotion by being transferred from the deep sink to the garbage can. He was replaced in the deep sink by Bob Bullock.

PHI DELTS PLANT LAWN Saturday the Phi Delts had their annual Community Service Day, during which they worked at Gritman Memorial Hospital. At the same time they started to put in a new lawn.

Sunday was the annual Orphan's Picnic at Spalding Park near Lewiston. About forty youngsters were treated to fun and a picnic lunch.

On May 13 the Phi Delts will have their annual Turtle Race at 10:00 a.m. This Sunday all girl's living groups will be serenaded and presented with their entries.

THETAS KIDNAP Pajama-clad coeds were seen on campus early last Saturday morning, as the Thetas each kidnapped a victim for the annual "Kidnap Breakfast."

Rosie Bicandi, Boise, was a house guest last weekend.

"BETA BARGE" SETS SAIL Bright and early tomorrow morning the happy crew of the "Beta Barge" will cast off and set sail on the wild and uncharted waters of Coeur d'Alene Lake, seeking not the East Indies, but

merely good fun on the Beta Spring Cruise.

Wednesday evening the Betas delivered the merchandise which was auctioned off to the Kappas for Campus Chest the Ray Grits Diamond Jubilee. After feasting on pizza, everyone enjoyed entertainment provided by "Si Grits and his 'Stinking Man's Band.'"

An informal convale between the Kappa Sigma chapter of the University of Alberta and the Gamma Theta chapter of the University of Idaho will be held at Banff, Alberta, Canada this weekend.

TEKES SERENADE Wednesday evening, Hays Hall gave a serenade to retrieve their shoes which were lost during a water fight with the Tekes. Serenades were given in honor of Hayden Clark, Hays, and Bobbie Raustad, Alpha Gam, who are pinned to Bob Ames and Roger Johnson, respectively.

SAE'S PLAN FORMAL The SAE's are busily preparing for their Spring Formal, "Champagne Mist," to be held this Saturday evening.

A new slate of officers will be chosen this weekend. They will take command early next week.

DELTA SIGS TO CROWN "DREAM GIRL" Highlighting this coming weekend for the Delta Sigs will be the Carnation Ball the crowning of a new Dream Girl, and a visit from "Bud" Hicks, member of the board of governors, of the national headquarters of Delta Sigma Phi.

Two more social events will wind up the year for DSP: an all-house exchange with the A-Phis and a weekend cruise to Lake Chatcolet May 20.

LINDLEY LOVELIES DANCE Three "Lovelies" danced around the May Pole during Tuesday's dinner. In view of May Day and National Bee Week, Billy Conklin was selected "May Be King." Teddy Neef was presented a may basket to complete the ceremony.

SIGMA CHI CYCLER Saturday afternoon the Capercycle Club journeyed to the local speed track and, against stiff competition, Darrell Merrill swept to victory in his heat and won another trophy for the house.

Tuesday evening Dave Frazier was stocked at the Gamma Phi house in recognition of his pinning to Norma Pomponio.

MOSCOW GIRLS VISIT PBP Moscow High School senior girls were dinner guests at the Pi Phi house Tuesday evening. Weekend guests were Julia Lind, Diana Birmingham, and Susan Nelson. Sunday guests were Dave Polage, Sigma Chi, and Rita Zachery, DG.

Blue Key Scholarship Applications are available in the Office of Student Affairs for the \$100 Blue Key scholarship. Criteria for the annual award are scholarship, leadership and need. Any male sophomore may apply. Deadline is May 12.

Just Imagine Being Stranded On An Island... and No "POWER" to get Cooking! THE WASHINGTON WATER POWER CO.

Summer glamour to give Mom! Bring a sparkle to Mother's eyes . . . with gifts that give the spark of glamour to her summer outfits. Choose from fashion jewelry here. Thoughts for Gifts: Nylons . . . her favorite Scarves . . . Colorful Hankies . . . the more the merrier. Gloves Panties Blouses CREIGHTONS

LUCKY STRIKE PRESENTS: DEAR DR. FROOD! DR. FROOD'S THOUGHT FOR THE DAY: BEWARE OF SUBLIMINAL ADVERTISING! Dear Dr. Frood: I've been reading a great deal about automated teaching devices. How long will it be before they come up with machines to replace professors? Professor DEAR PROFESSOR: Just as soon as they get one that can rap the knuckles of a sleeping student, give humiliating answers to foolish questions and spring surprise tests whenever it happens to be in a bad mood. Dear Dr. Frood: In the four years I've been at this college I've done some pretty horrible things. I am guilty, for instance, of [redacted] into and around the home of Professor [redacted]. I'm also ashamed of [redacted] the Board of Regents, and completely [redacted] the campus policeman's [redacted]. But the worst thing I did was [redacted] after hiding all night in the [redacted]. Can I, in good conscience, even accept a diploma from dear old [redacted]? DEAR [redacted]: You can if you send \$500 in unmarked bills to Dr. Frood, Box 2990, Grand Central Station, New York 17, N. Y. If you don't, I'll print your letter without the little black lines. Dear Dr. Frood: Don't you think it's wrong for a boy and girl to marry while they're still in school? Soc. Major DEAR SOC.: Yes, they should at least wait until recess. THE HANDWRITING IS ON THE WALL, says Dr. Frood. Or, more exactly, on the blackboard. It's appearing on college blackboards everywhere: "College students smoke more Luckies than any other regular." Why is this statement showing up on college blackboards? Because I am paying agents to put it there. For you must remember that Luckies are the cigarette with taste—the emphatic toasted taste. Try a pack of Luckies today. CHANGE TO LUCKIES and get some taste for a change! Product of The American Tobacco Company—Tobacco is our middle name

Board's Work To Expand Just Begun

First visible signs of the new Student Union addition will appear when construction begins next August but for five years the Student Union Board has been nursing the plans into realization.

The Student Union (SUB) Board is an advisory committee to the President of the University on all Union operations including building expansion.

Faculty members are Dean Charles O. Decker, Chairman; Marian Featherstone Home Economics Department; Fred Winkler, history instructor; and Kenneth Dick, University Bursar. Also included are Gale Mix, ASUI General Manager and Mrs. Charmaine Fitzgerald, Program Director.

SUB Board Members
Student members are Sharon Weaver, Theta; Skip French, Phi Delta; Ron Ayers, Lambda Chi; Bob Carlson, Lindley; Blake Thompson, Sigma Nu; Vivian Dickamore, Gamma Phi; and Dick Stiles, Delta Sig, ex officio member and liaison to Executive Board.

The SUB Board must establish building regulations and policies; approve the Student Union budget; review and evaluate all SUB programs; develop new programs and plan for SUB expansion.

Student Directors meet once a week with the chairmen of the 10 Student Union committees as a program. Miss Weaver is chairman. The Council supplements the work of the SUB Board by coordinating the operation of all activities and public events held in the building.

Miss Weaver explained that both student and faculty members of SUB Board and Program Council have more work to complete before the dedication of the new addition. They must okay any changes in building plans work with interior decorators, and form and adopt new policies for the building.

One of the Board's greatest responsibilities is to publicize the new building and its philosophy to the students and the state, Miss Weaver said.

Miss Weaver pointed out that the old Faculty Club may be torn down and the SUB will become a meeting place for students faculty and alumni. "It must serve the needs of all," she said.

"The new SUB will house facilities which will allow students to enjoy cultural, social and recreational benefits not possible in the old building," Miss Weaver summed up.

MILLION SPENT

Over one million dollars was spent in 1950 to build the newest and largest addition of the Student Union Building. The distinctive "fish bowl" was added to the Bucket in 1956.

Target Date Set . . .



DIGGIN' — Four of the prime movers in the coming SUB expansion program are pictured with the shovel which University President D. R. Theophilus (with shovel) will use to break ground next fall. On the left is Bruce McCowan, ASUI president; Gale Mix, SUB Manager; Dr. Theophilus, and Bob Brown, SUB Board chairman for 1960-61. (Walt Johnson photo.)

SUB Will Gain 'Nice' New Name

The SUB will be no longer in name, anyway!

With the building of a new union about to begin, a new name that will fit the philosophy of the union is being sought. The name Student Union Building bears no particular significance and many other college unions bear the same name.

The philosophy of the new union is that of uniting the student with various aspects of cultural activities and education which can essentially come from faculty, parents, townsmen, alums, and the citizens of Idaho.

A method of selecting the new name has not been decided yet; but, the new name will have to state that the union is representing the State of Idaho as its center of education and cultural activities as well as social and recreational.

MIX TOURED

SUB manager Gale Mix toured eight campuses during the initial stages of the SUB planning, aiming at picking up ideas that might be incorporated into Idaho's building. The tour included buildings at Utah, Kansas, Kansas State, Missouri, Indiana, Purdue, Wisconsin and Montana State College.

SELL IT WITH A CLASSIFIED!

Parking Space New Problem

An old nemesis to the Idaho campus, the parking problem, will again be confronting students when construction begins on the new SUB.

"Students will have to be pretty patient about parking around the SUB during the construction," said George Gagon, University Engineer. At present the parking plans will have the construction employees' vehicles at the north end of the SUB to Sixth Street.

On Deacon street from Sixth to Idaho, there will be a two-hour parking limit. The train depot parking lot will be used, if possible, explained Gagon.

Student and guest parking also will use the Music Building lot and the parking area east of the SAE house will be graveled for added room during construction.

"We need, approximately, ample room for 150 cars," said the University Engineer.

It will be asked guests attending conventions in the SUB to park their cars downtown near their hotels, since it is about as close from downtown to the SUB as it will be from the parking lots available on campus, he said.

One problem is that some cars in the SUB parking lot are left over the weekend, according to Gagon, and if these cars could be parked elsewhere, say in the Music Building lot, this would ease the pressure on the SUB.

SUB Ancestor Had Beer, Dancing

The original Blue Bucket, ancestor of the present Student Union, provided students with a place to dance, sit in the cafeteria, or drink beer.

Located at the site of the present University Book Store, the Bucket was purchased by Permeal French, former Dean of Women, and leased out to a private concern.

On the bottom floor of the building was the cafeteria, that sold beer at its fount a n. A dance floor was provided upstairs.

In 1936, the University bought the Bucket and expanded the building up to a point near the present cafeteria's fountain.



Why are some girls prouder of their rings than others?

You see it in her eyes—but the reasons aren't all romantic ones. Her diamond ring is an Artcarved. This means it meets rigid standards of excellence in cut, carat weight, color and clarity.

Nor is this simply a verbal promise. Artcarved's written guarantee explains how the exclusive Permanent Value Plan lets you apply the full current retail price toward the purchase of a larger Artcarved anytime, at any Artcarved jeweler throughout the country. You will be proud, too, of Artcarved's award-winning styling, like the Evening Star shown here. To be sure it's an Artcarved: Look for the name inside the ring, and ask for your written Artcarved guarantee.

Of course, being engaged is wonderful, but sealing the engagement with an Artcarved ring makes it more wonderful than ever—forever!

Artcarved

DIAMOND AND WEDDING RINGS

J. R. Wood & Sons, Inc., Dept. SP-11
216 E. 45th St., New York 17, N. Y.

Please send me more facts about diamond rings and "Wedding Guide for Bride and Groom". Also name of nearest (or hometown) Artcarved Jeweler. I am enclosing 10¢ to cover handling and postage.

Name _____
Address _____
City _____ County or Zone _____
State _____

Evening Star is an exclusive patented design—some of Artcarved's award-winning settings.

Student Union Bldg. More Than Coffee Lounge; Cultural, Display Features Also Important

By SHARON LANCE
Argonaut Managing Editor

A Student Union Building is more than a coffee dispensary—it must serve the educational, cultural and social needs of an expanding student body.

With this theory in mind a student-faculty expansion committee began work five years ago on the new Student Union—doubling the present size and providing many more special features.

Charles O. Decker, Dean of Student Affairs and chairman of the Student Union Committee, said the new building will adequately fulfill the needs of 5,500-6,000 students.

"Considering that we are remodeling an old structure and our building site is limited, the new Student Union will be an excellent functional plant," Decker said. "Taking this reporter through floor by floor sketches of the new building, Decker first pointed out changes in the basement.

Four new lanes will be added to the bowling alley and a separate billiards and separate table tennis room will be constructed. Special basement addition is an arts and crafts room furnished with work benches, sinks and electrical outlets.

The Dipper dancing area will be moved to the basement and decorated in a night club decor. The floor space will be only slightly larger than the existing one, but more seating room and a place for small combo bands will be provided.

An enclosed TV room to seat 15-20 people will adjoin the Dipper. Decker explained that the new plan will accommodate larger student audiences for big TV productions by installing TV outlets in the Dipper.

The Argonaut offices will move from first floor to the basement and be nearly doubled in size. A separate dark room is planned.

Unfolding plans for the first-floor expansion and renovation, Decker explained that the new and old buildings, will be adjoined at what is now Seventh Street. A much larger lobby and lounge will be provided on the first floor with a special corridor for art and other exhibits.

One of the most-anticipated sections of the first floor is listening

area or stereo lounge. The room will be divided into three parts enabling three student groups to listen to three different selections of music at the same time. Records or tape recordings will be handled at a control center operated by a designated person.

Dean Decker said he has studied stereo lounges on the Utah State and University of Washington campuses. They are one of the most frequently-used spots in the union buildings.

"We will get the best sounds and music available," Decker promised.

The ASUI, Student Union and alumni offices will be moved to the new part of the building and occupy much larger space. The cafeteria and snack bar will remain in the same place, but, Decker said, will extend into the present lounge area.

Since several of the existing first floor rooms will be converted into meeting-banquet rooms and the third floor conference rooms will not be changed, Decker estimated that 10-12 meeting rooms will be available to students and visiting conventioners.

Some of the meeting - banquet and various other places throughout the new structure will be completed, Decker said. He explained that in the long run and in terms of upkeep, carpeting is less expensive than tiling, such as that used in the present union.

The new addition to second floor, Decker said, will basically be ballroom area. The floor space will be as large or larger than the Memorial Gymnasium where the Homecoming Dance, Junior

Senior Prom, and Military Ball are now held.

The ballroom will be much more flexible than the present division of three ballrooms. Giant 16-foot partitions operated by motors will divide the room into sections when smaller areas are needed for meetings or banquets.

Many mass students meetings will probably be held in the ballroom, Decker speculated. It will accommodate 1,000 people. A special projection area will be installed for films which can't be shown on the Borah Theatre screen.

The ballroom floor will extend out over the front of the first floor structure, creating an open air terrace. Sliding glass doors will separate the terrace from the lounge.

Decker said the old building

will be altered to provide more space for the bookstore, the snack bar and meeting - banquet rooms.

One important change is the addition of a pantry adjoining a banquet-meeting room where the Dipper is presently located. Dishwashing equipment and other facilities will be available in the pantry for married or other groups which have functions such as potluck dinners.

Decker said the main disadvantage of the new building might be its expansive length. On the other hand, he said, the length will help separate the different functions of the building.

He jokingly added: "ASUI General Manager Gale Mix will have to buy a motor scooter so he can get from one end of the building to the other."

Addition Effort Ready In '62

The new Student Union addition will be ready for use by December 1, 1962, and a new bookstore and completely remodeled cafeteria will be completed a year later, according to University engineer, George Gagon, who heads the SUB construction schedule committee.

Upon the completion of the new addition in December, 1962, the exodus from the old SUB offices into the addition will begin. At that time, the offices in the present building will be renovated.

The next step is to remodel the cafeteria area. This job is expected to be finished by August 1, 1963.

The final link in this long chain of construction events will be the razing of the bookstore and build-

ing a new self-service book center in its place. During this time the bookstore will be in the basement game room of the new addition. Tentative plans call for this to be finished by December, 1963.

Construction noise will be muffled from the old SUB by boarding the north-side windows and insulating the walls between.

For a time it will be impossible to use the Seventh St. (rear) entrance to the SUB. The heating tunnel construction will disrupt this regular line of pedestrian traffic, forcing the people to use the main east entrance to the building.

The entire construction program has been designed for the convenience of the students.

WHERE'S CHARLIE?

Hes dragging his body down to Rogers for a PICK-A-BANANA SPLIT

Rogers Ice Cream

512 Washington

Maytime Specials!

AT THE MUSIC CENTER

DOT RECORDS

ON SPECIAL ALL DURING MAY

Reg. \$4.98 on sale at \$3.98
Reg. \$3.98 on sale at \$3.49

GET YOUR FAVORITE RECORDINGS OF
BILLY VAUGHN — LAWRENCE WELK
TONY MARTIN — EDDY PEABODY
LOUIE PRIMA & KEELY SMITH
AND OTHERS AT BIG SAVINGS!

MOSCOW MUSIC CENTER

206 S. Main TU 3-8251

CONTACT
Chris Gibbs
U. of I. Student Campus Sales
Representative for FAHRENWALD'S, the Local Chevrolet and Oldsmobile Dealership.

Phone CHRIS at TU 2-1441 or TU 2-1451.
He will call on you at your convenience.
Authorized and Experienced to offer you an attractive buy.

Fahrenwald

CHEVROLET OLDSMOBILE

without MR. COOL®

world's lightest suit

One final "exam" before summer starts: examine MR. COOL by Clipper Craft. A suit so lightweight, your mind won't believe the comfort your body feels! Frothy 6 oz. Dacron* polyester and worsted—wiltless, wrinkle-resistant, wonderfully tailored. See MR. COOL in authentic Ivy and other models. You'll head home looking great, and the folks'll like your sense of economy, too. Suits, \$49.95; Sport Coats, \$35; Slacks, \$15.50 (slightly higher in the West).

*Du Pont's TM

CLIPPER CRAFT SUITS at DAVIDS' DEPARTMENT STORE

MOSCOW

J. R. Wood & Sons, Inc., Dept. SP-11
216 E. 45th St., New York 17, N. Y.

Please send me more facts about diamond rings and "Wedding Guide for Bride and Groom". Also name of nearest (or hometown) Artcarved Jeweler. I am enclosing 10¢ to cover handling and postage.

Name _____
Address _____
City _____ County or Zone _____
State _____

Evening Star is an exclusive patented design—some of Artcarved's award-winning settings.

ATO, Gault, Chrisman Top Leagues

Ball, Horseshoes Lead Intramurals

Tuesday and Wednesday's softball diamonds saw hard-fought action in intramurals this week as Chrisman, Gault, and ATO emerged at the top of their leagues.

In standings tabulated as of May 3, Chrisman was balanced on the top of League 1 with a 3 won, 1 loss record. Battling for the next two spots were TMA and Gault, each with 2 and 1 records.

Action in League 2 saw Gault at the top of the stickmen's list with a 2 and 0 record, barely nudging out TMA2 and WSH2, each sporting a respectable 2 and 1 record.

League 3 is in remarkably stable condition, with each of the five entrants boasting identical records, namely 2 wins and 1 loss. It's anybody's league, as Red Smith used to say.

The action was close in League 4, as a strong ATO outfit emerged on the top of the heap with a 3 win and no loss record. Running behind were the SAEs and the Deltas, each with a 2 and 0 record.

League 1—CH won 3 lost 1; TMA won 2 lost 1; GH won 2 lost 1. League 2—GH won 2 lost 0; TMA2 won 2 lost 1; WSH2 won 2 lost 1.

League 3—LCA won 2 lost 1; PGD won 2, lost 1; DSP won 2 lost 1; FH won 2, lost 1; KS won 2, lost 1.

League 4—ATO won 3, lost 0; SAE won 2, lost 0; DTD won 2, lost 0.

In softball games played in the last few days, there some resounding wins and losses, and some near misses in the win-loss category.

On Wednesday, May 3, Campus Club edged Upham 8 to 6, and Chrisman bounced the Town Men's Association 11 to 4. The Betas barely squeezed by Delta Chi 6 to 5, and Willis Sweet 2 bumped the Town Men 2, 7 to 3.

In contests scheduled last Tuesday, a remarkably strong ATO crew headed by Rollie Williams, bounced Theta Chi 15 to 0.

The Phi Taus, seemingly in a tradition, got bounced by the Deltas, who recently merged victorious in the track meet 17 to 1. In a game marked by a considerable number of errors on both sides, the Fijis edged out Lambda Chi 14 to 12.

Sigma Nu bounced Sigma Chi 11 to 4 in another upset, and the Phi Deltas edged the Delta Sigs, 6 to 5.

In what was probably the most one-sided contest of the season, FarmHouse nudged Kappa Sigma 21 to 1. It was a rough afternoon for the brothers of KS.

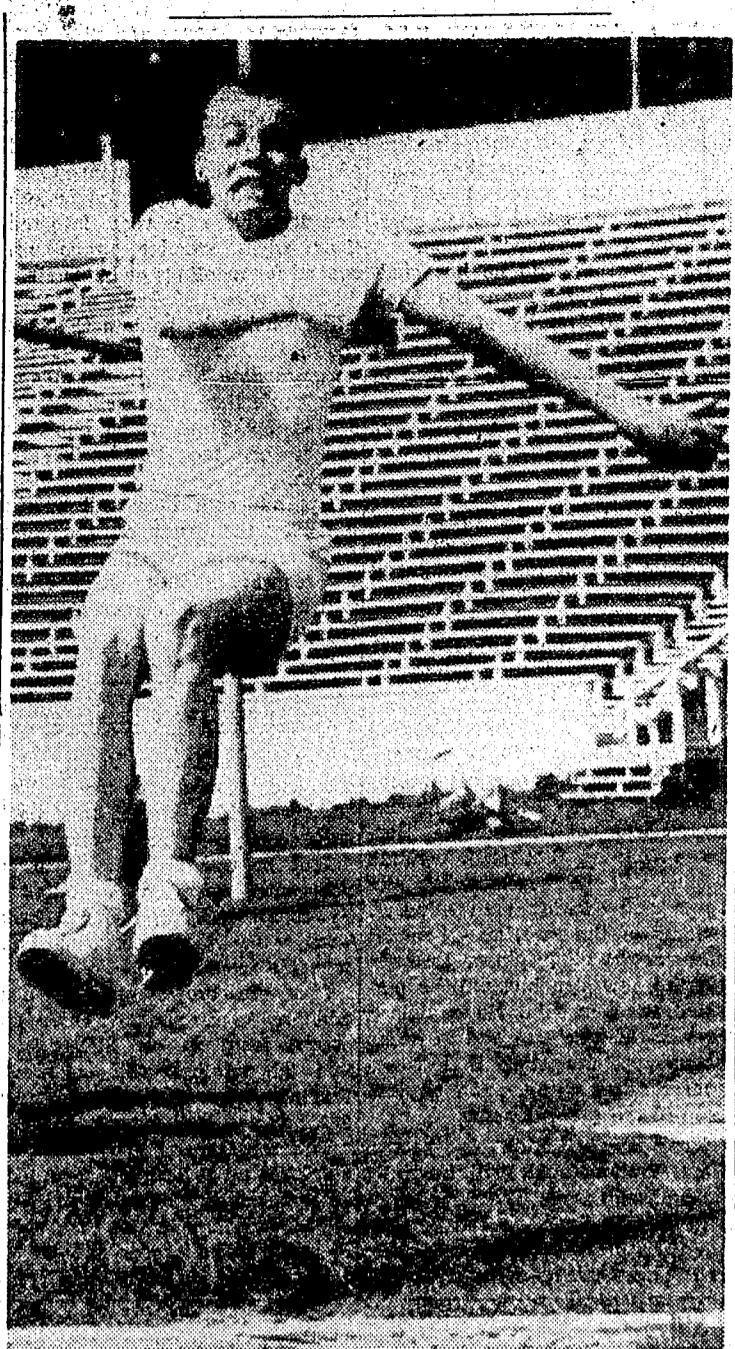
Wednesday
CC 8—UH 6
CH 11—TMA 4
BTP 6—DC 5
WSH2 7—TMA2 3
Tuesday
ATO 15—TC 0
PKT 1—DTD 17
PGD 14—LCA 12
SN 11—SC 4
PDT 6—DSP 5
FH 21—KKS 1

In the little-known, but much sought-after Horseshoes singles championship the competition shifted into high gear.

In action played on the courts Wednesday B. Jones, SC, won in a forfeited game against J. Hult, SAE. J. Renz, UH over C. Sowers, CH, 2 to 0. R. Welsh, WSH, over M. Clouse, DC, 2 to 0. R. Gailbraith, DSP, over J. Fink, KS, in a forfeited match.

D. Conley, CC, over D. Tracy, ATO, 2 to 0. E. Brown, WSH, over C. Erickson DC, 2 to 0.

In game fought out yesterday, J. Palisin, DSP, came from behind to whip M. Conley, CC, 2 to 0. G. Doty, BTP, over F. Keunea,



INTRAMURAL ACTION — Art Jones, Willis Sweet, takes a big jump forward in intramural broad jump action last Saturday. John Pemberton, McConnell, took a bigger jump, however, winning the event.

Theophilus Guest Speaker For P.E.K.

Dr. D. R. Theophilus, president of the University, will be the featured speaker at the annual Phi Epsilon Kappa banquet, Tuesday, May 9, 7:15 p.m., in the North Ball Room of the Student Union Building. President Theophilus' talk will stress the need for good physical fitness.

During the evening, the distinguished service award will be presented to the member of Idaho's P.E.K. Chapter who rendered outstanding service during the past year.

Brief messages will be given by Dr. Leon Green, head of Physical Education at Idaho, and Dr. Hubert Dunn, sponsor of Alpha Gamma Gamma chapter, Washington State University. Serving as master of ceremonies will be Don Weiskopf, Idaho's chapter sponsor.

Preceding the banquet at 6:30 p.m., the Spring initiation ceremony will be held, supervised by chapter president, Ken Maren. The following nine students will be initiated: Dick Cooper, Andy Klemm, Cliff Lawrence, Ed Moomaugh, Jim Neese, Roy Schmidt, Dave Stephenson, Ken Thompson and Ken Waide. The ceremony will be staged in Conference Room A of the SUB. Only chapter members may witness the initiation ceremony.

LCA, in a hard-fought forfeited game.

G. Malcolm, PDT, clobbered H. Berg, 2 to 1. N. Gissell, Delt, over R. Fletcher, SC, 2 to 0. D. Roemer, UH, over A. Jensen, Jensen didn't show. G. Gibbons, SC over D. Hawley. Hawley didn't make the scene either. E. Eggelhuffer, BTP over A. England, LH, 2 to 1. J. Bacon, SAE, trampled on L. Thomas, TMA, 2 to 0.

Sports

Boesel, Top Regular Hitter; Townsend Is Swinging Pitcher

First baseman Terry Boesel leads the Vandal regulars with a .313 batting average. Shortstop Bill Johnson, who had trouble hitting the ball in pre-season play, is second at .286.

Boesel has five hits in 16 trips to the plate. Johnson has six hits in 21 at bats, including a double and a home run. Johnson also leads the Vandal club in errors with five miscues.

Reserve outfielder Herb Dehning is the top Vandal batsman for average. The Idaho sophomore has three hits in six times to the plate for a .500 average. Lefty Pat Townsend fresh from tossing

a one-hitter leads the pitchers with three for nine and a .333 average. Second sacker Dick Mooney and right fielder Chuch White are tied with the total number of hits with seven. Mooney is batting at a .289 clip and White at .259. White is also the team's top strike out victim with nine. Cliff Trout from Lewiston leads in walks with five.

White however is tops in runs-batted-in with four. Johnson has three rbi's.

	ab	r	h	e	rbi
Herb Dehning	6	0	3	0	.500
Pat Townsend	9	1	3	0	.333
Tery Boesel	16	4	5	1	.313
Bill Johnson	21	3	6	5	.286
Dick Mooney	26	3	7	1	.269
Chck White	27	3	7	1	.259
S. Hinckley	10	1	2	0	.200
Cliff Trout	26	3	5	1	.192
Roy Schmidt	8	1	1	0	.125
Bob Vervaeke	22	2	2	3	.091
Ted Knivila	13	2	1	1	.077
Mike Stowe	9	1	1	3	.111
Glen Porter	6	0	0	0	.000
Ron Zwitter	4	0	0	0	.000
Tony Burke	2	0	0	0	.000

The Crescent Is Sponsoring College Board

The Crescent, Spokane division of Marshall Fields department stores, is again sponsoring a College Board from July 19 through August 9.

Members of the board, university sophomores and juniors preferably, will serve as advisers to girls entering college and will take part in The Crescent's annual College Fashion Show.

Girls interested in being employed for the three-week College Board are asked by Crescent personnel to secure application blanks from the Idaho Office of Student Affairs. It is desirable for each applicant, who need not be a resident of Spokane, to accompany the application with a letter giving supplementary information.

Lib., Conserv. Debate May 10

"Liberalism and Conservatism" will be the topic of a round-table discussion to be held at 7:30 p.m. in the SUB South Ballroom, Wednesday.

Panel members taking the conservative point of view will be R. A. Postweiler, associate professor of Economics; Guy P. Wicks, associate dean of students; and Lon Woodbury, Political Science student, off campus.

Med., Dent. Majors To Meet May 9

Students planning to apply for Medical or Dental school for the term beginning September, 1962, should attend a meeting at 7 p.m. Tuesday in the Science Building, Room 27, according to Dr. J. I. Jolley, Chairman of Pre-med and Pre-Dent studies.

The procedure for applying for admission will be discussed and application forms for the Medical College Admittance Test and the Dental Aptitude Test will be passed out.

Vandal Nine Ends 5-Game Road Trip With Townsend's 2-0 Shutout Hurling; Coach Lauds Idaho Pitching, Batting

Idaho's stickmen returned from a rough, bumpy road trip Wednesday — winning only one of their five games. Even though the Vandals are tied with their last opponent, Washington for the cellar-spot in Northern Division play, "they cannot be counted out in the race," according to baseball coach Wayne Anderson.

The Vandals and the Huskies have a 2-5 league record. Oregon and Oregon State are tied for the top spot with 2-0. WSU has a good 4-1 record.

Tuesday the Vandal stickers split a doubleheader with the Washington nine. The Huskies took the opener, 7-4 and Idaho, with the one-hit pitching of Pat Townsend, shut the hosts out, 2-0.

In the first Washington contest, the Vandals managed to tie the Huskies in the top of the sixth inning, 4-4, but in the bottom of the same, the Huskies scored three more runs.

The Vandals blew their chances of slipping past the Washington crew in the final inning when the three batters flew out to end the game.

Terry Boesel was the big hitter for the Vandals in the first game, getting two for three. Bill Johnson hit one for two.

The nightcap went seven innings before Idaho broke the scoring-ice. **White Starts Rally**

Chuck White started the Vandal rally in the seventh when he hit a single and stole base to second. Johnson then walked and Herb Dehning sacrificed both to second and third. Trout loaded the bases and Ted Knivila stepped to the plate with one out.

Washington immediately countered with a defensive play. They brought their centerfielder in to play between home and third to try to cut out the run. Hitter Knivila slammed the ball over second base to score White and Johnson.

Townsend hurled a fast-moving game. He faced 26 batters in 7 innings.

Boesel, again showed his hitting ability, connecting on three for six.

First game:
Idaho 000 022 0 — 4 5 2
Hinckley and Schmidt; Wakefield and Thomson, Wieder-

Luttrupp Tops As Thinclad Point-Getter; Flisher Second

Vandal speedster Pete Luttrupp leads the Idaho tracksters with 58 points gathered in varsity competition. Curt Flisher, a 220-yard man turned half-miler is second with 43 points. Reg Carolan, the multi-sports man from Tahoe Valley, Calif., is third with 34 tallies.

Luttrupp, a sophomore from Coeur d'Alene, runs the 100-yard dash, both the high and low hurdles, and the mile relay for the Vandals. Flisher, a junior from Nampa, can go with the hurdles or the quarter mile if he has too, but he has found that the half mile is his best race.

Carolan is Idaho's decatholon entry. The 6-6 redhead has gathered his points in the hurdles, the shot, and the discus.

In the fourth place, only three points behipd Carolan is Vandal co-captain Joe Davis. Davis has 31 points gained throwing the shot put and the discus. Davis is a junior from Bellevue, Wash.

Phil Steinbock, a sophomore from Salem, Ore., is fifth and Mike Mosolf, a junior from Carmel, Calif., is sixth. Steinbock has 19 points and Mosolf, who is playing spring football now, has 18 and 11-15.

When the thinclad scoring is classified according to the state of Idaho is in first spot and California is a far away second. Idaho performers have 167 total points and the Californians have

66.

The Washington thinclads are third with 34 points and the Oregonians are fourth with 19.

Other states with "scores" are Wisconsin, 16 3/4; Mass., 8; Montana, 6; Canada, 2, and Michigan, 3 1/2.

Games With ISC In 1962

A 26-game schedule with 12 home dates and a four - night stand at the Far West Classic in Portland has been approved for the University of Idaho basketball team during the 1961-62 season.

The Vandals will open the home slate on Dec. 1 when they host Whitworth. Other home tests will feature Gonzaga, Montana State College and Montana State U., Oregon, Oregon State, Washington State and Washington.

The only opponent, aside from those in the Classic, not to appear in Moscow will be Seattle University. Idaho meets the Chieftains in Seattle, Dec. 9. Idaho opens against Portland U. in the Classic on the evening of Dec. 28.

Another feature of the 61-62 slate is the return of Idaho State College in a home-an-home series. The Vandals host ISC on Feb. 16 and travel to Pocatello on March 2.

LITTLE MAN ON CAMPUS



HEY SPONSOR—I HEAR YA FINALLY GAVE UP TRYING TO KEEP THE LIGHTS TURNED ON AT TH' FRESHMAN DANCE LAST NITE.

STORE HOURS:
9:30 a.m. to 5:30 p.m. DAILY

PENNEY'S Carnival of Fashion

Spaghetti Straps

lead over the shoulders from the front bateau neckline to the modestly scooped back. Styled from easy-care Champagne® combed cotton broadcloth, this enchanting Los Angeles summer fashion features a fully lined bodice. Comes in solids and florals.

9 to 18
8.95

YOUR PENNEY CHARGE CARD MAKES IT EASY TO BUY YOUR COMPLETE WARDROBE!

JACK TAR—British knit cardigan with 3/4 length sleeves and stand-up collar. Knit of 100% fine cotton. Square rib fitted trunks of cotton and rubber. Combinations of gold, olive and navy with white. Cardigan \$8.95 Trunks \$5.95

MALOLO® ADMIRALTY wind-worthy 100% cotton garrison jacket with box in pocket and British collar. Matching tailored Hawaiian trunks. In white, gold, natural, olive and blue with contrast braid striping. Jacket \$7.95 Trunks \$5.95

MALOLO® PICCADILLY LANE foulard stripe, terry lined jacket with terry trim on front. Teamed with standard Hawaiian action trunks, both of 100% cotton. In color combinations of spice, olive and blue ground. Jacket \$8.95 Trunks \$5.95

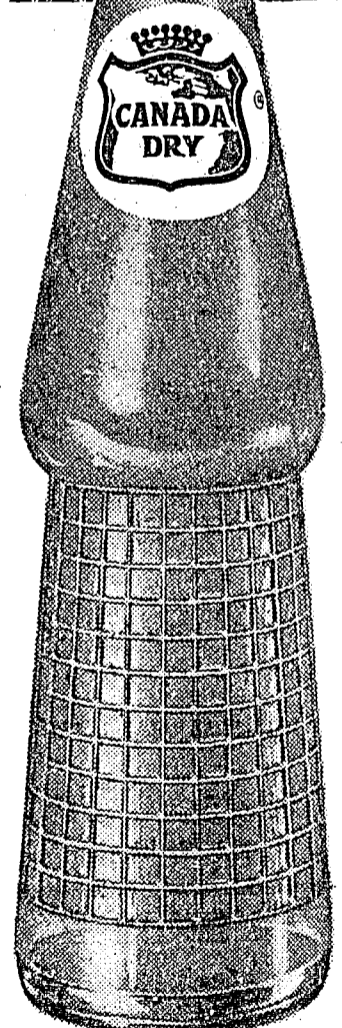
THE SEAFARING MAN IS a Catalina MAN
(with a British accent)

Mooring your craft or sunning on a raft, Catalina combines the sun and sea of California with the British style influence to brighten your seaworthy command.

STORM WARNING 100% cotton knit. Cardigan with 3/4 length sleeves. Contrast trim on jacket and matching front zip Hawaiian trunks. "Storm God" embroidered on jacket pockets and trunks. Colors in white, gold or spice. Cardigan \$9.95 Trunks \$7.95

MALOLO® LIGHT BRIGADE regimental stripe jacket with British accented collar and over-size pocket. Shell head buttons. Shown with tailored front zip trunks. Of 100% woven cotton in color combinations of gold/red or grey/green. Jacket \$6.95 Trunks \$4.95

COLOR GUARD blazer knit cardigan with full sleeves and button front. Shown over medium length boxer trunks. Finest 100% cotton and available in colors of gold/black or navy/red with white. Cardigan \$7.95 Trunks \$5.95



KING-SIZE FLAVORS

True Fruit ORANGE, GRAPE, CHERRY, HI-SPOT LEMON AND MANY OTHERS

MOTEHR'S DAY, MAY 14
FLOWERS MAKE THE PERFECT MOTHER'S DAY GIFT

Mothers always enjoy flowers. Roses, Carnations, Assorted Bouquets, Plants, or Corsages can be sent Mothers anywhere in the country.

SEND YOUR ORDER TODAY, SAVE ON THE TRANSMITTAL CHARGES.
S & H Green Stamps

MOSCOW FLORISTS & GIFTS
112 W. 6th John Turk Ph. TU 2-1155



Jim Herndon On The Bench

Jacoby Points Out Toughest Race, Outstanding Trackster

After a 2 1/2-hour workout, sandy-haired Ed Jacoby, married man, student, sprinter, and Vandal co-captain, was hurrying home to dinner. Jacoby was able to linger along the way long enough, however, to express his views about Idaho track and about track in general.

For the second time in his track career, Jacoby has had the honor of being named a co-captain. This spring he and Joe Davis were elected Vandal co-captains. Jacoby was a co-captain of his high school track team at Idaho Falls, his home town, also.

Jacoby started college at Montana State University in Missoula and as a Grizzly performer. He played a little football. He decided, however, that MSU and the Silvertips were not for him, and the next year he moved to Moscow and the University.

After a season of intramural running, Jacoby joined the varsity track team about the same time that Bill Sorsby took over the track coaching duties.

:9.8 Best Run

Jacoby, who specializes in the 100-yard dash, has turned in a :9.8 performance in his season and a half of Vandal running. Jacoby also averages around 22 1/2 feet in the broad-jump.

Last month in the Far West Relays at Pullman Jacoby was well on his way toward breaking his own :9.8 record. The Idaho sprinter was running second when he had to pull up short because of some torn leg muscles. Jacoby considers this race his toughest one.

It was his toughest race, not only because of the pulled muscle which has kept him on the sidelines for a month (the OSU dual meet this weekend will be his first meet since his injury), but Jacoby also faced his strongest competition.

Harry Jerome from Oregon, who won the race in :9.4, holds the American 100-meter record with a :10.0 time. Bobby Saunders from UW, whom Jacoby was leading when he dropped out just short of the finish line, finished the race in :9.5 in second place. Two other performers, Darrell Horn of OSU, and Roscoe Cook of Oregon, have also run the distance in :9.5 or better.

Now that Jacoby is back on the track he says he has a psychological problem. "I think that I'm going to pull my leg again—whether the leg feels like it or not," Jacoby states. Jacoby is not worried about his feeling though. "I hope to run another :9.8 race, or even better this weekend," he added.

Attitude Is Important

An athlete's attitude toward track is very important, Jacoby believes. "The trouble with high school athletes is that they don't want to work hard—they are afraid to work hard," Jacoby states.

A coach has a lot to do with an athlete's attitude and performance, Jacoby said. High school athletes sometimes have a bad attitude that reflects poor coaching. College coaching is on a much greater plane, especially at Idaho, Jacoby feels.

"Sorsby (Coach Bill) is the best track coach that any of the fellows up here have ever seen. I look for him to be one of the best in the country before long," Jacoby added.

Another feature besides the coaching that Jacoby believes is an added incentive at Idaho is being able to run unattached, e. g. running as an individual, not as a member of a team. The athlete then does not have to have passed the University eligibility requirements.

"Running unattached helps you to develop and no one should be held back from competing," Jacoby states. "This country is looking for good athletes, but is preventing their own purpose by preventing them from competing," Jacoby added and cited these examples.

NCAA rules make it hard for people to compete, and so does the line drawn between amateur and professional status. Any track coach is considered a professional and is barred from competing. This hurts our chances in the Olympics because many top athletes go into coaching, Jacoby believes.

It Hurts, But...

Running for the Idaho Vandals can be disheartening, but the effect is not fatal, Jacoby believes. "You get beat so many times and it hurts, but we are getting beat by some of the best individuals in the nation and it is better to get beat by some one good than beat a poor one," Jacoby believes.

Jacoby considers Vandal Reg Carolan as one of the best athletes that he has ever seen. Washington's Olympic decathlon star, Dave Edstrum, is given a similar rating.

Track at Idaho is rapidly improving, Jacoby feels. "The frosh team is one of the best Idaho has ever seen and we only lose two seniors from this year's squad," Jacoby states, explaining why.

"There should be a lot more emphasis on track and field," Jacoby stated in parting. "You have to be in far superior physical shape for track than any other individual sport. Besides we will have to stress track more to win the next Olympics," Jacoby said.



Ed Jacoby Back in Action

Idaho Injury Ranks Close; Tough WSU-OSC Meet On

Track coach Bill Sorsby will be able to plug up some of the gaping injury holes in his cinder squad ranks tomorrow, but chances are the Vandal speedsters will find the competition too tough to handle even with a healthy squad.

Facing a triangular match with Oregon State and Washington State in Corvallis tomorrow, Sorsby's battered team was bolstered by the return of sprinter Ed Jacoby, quarter-miler Gary Michaels, and distanceman Dick Douglas.

The three-some are not likely to see full action, however, with Michaels limited to distance running, and Douglas, a miler with a 4:13 best mark and a 9:14 in the two mile, expected to be too long from action to fare overly well.

All three were crippled by early-season injuries.

WSU Eyed

Sorsby held scant hope that the Vandals would come close to matching the powerful and depth-filled Oregon State cindermen, but indicated the Idaho crew might give Washington State a battle for second place.

The main action, however, will probably be the mass assault against meet records.

In the 100 yard dash, the Beavers' Amos Marsh has a best mark of :09.5. The meet record is :09.6. Jacoby, before his injury, has done :09.8 for the Vandals.

The shotput mark of 52-6 should also totter. Idaho's Reg Carolan has lifted the 16 pound ball over

54 feet, while Oregon State's Neil Plumley has a best mark of 54-7. The pole vault record, now at 13-6, is likely to be left far behind by Oregon State's 14-6 jumper Jerry Betz.

Marsh Again

The 220 yard sprint may also provide another record. Marsh holds the old record, :21.5, but has a best time of :21 this season.

Ron Bach of Oregon State should continue the assault on the records. The quarter mile mark of :49.6 should fall to Bach, whose best time this season is :47.8.

The assault will probably extend to the mile relay. The old record, 3:21.0, set by an Idaho quartet in 1956. Oregon State has already gone far under that mark this sea-

son. Relay Action Sorsby indicated that his top flight relay squad would likely steer clear of any real competition with the Beavers' squad, but would point at outpacing the Washington State team.

Pete Lutropp, who is currently leading the Idaho point-getters with 58 individual tallies, will go in the 100 yard dash, hurdles, and Idaho's relay.

Curt Flisher, next in the points line with 43, will try the 220 and 880, along with handling relay duties.

Carolan, along with the shotput, will join Joe Davis in the discus competition. Davis, in turn, teams with Carolan in the shot.

I. Linksters Face Double Challenge

The Idaho linksters face a double challenge this weekend on the University course. The Vandal golfers play Oregon this afternoon and take on the Gonzaga Bulldogs tomorrow.

Both the Bulldogs and the OSU Beavers are considered considerably improved over early season showings.

The Vandals, fresh from their lone defeat of the season at the hands of Oregon last week, have a 4-1 record.

Idaho handed OSU one of its two losses last year on the Beavers' home course. The Beavers will be out to return the loss.

Mainstay

The Beavers' mainstay golfer is Stew Schroeder. Last year as a sophomore, Schroeder was a third team all-American choice and a Northern Division medalist.

Schroeder probably will be teamed against Idaho's Gary Floan. Floan lost the first match of his college career last week to Oregon's Jerry Cudari and the Idaho linkster-hoopster will be eyeing the winning trail again.

Vandal Don Modie remains as Idaho's only undefeated linkster. Modie is undefeated in all of his 23 dual matches, not including his frosh contests.

Modie will probably draw either Tom Carter or Bill Aubrey.

The other members of coach Snider's crew, Ray Kowallis, Ray Schmidt, Robb Smith, and Norm Johnson will be matched with the remaining Oregon swingers, Ken Leonard, Russ Swanson, Jim Kerr, and Carter or Aubrey.

Putters

Idaho's Smith and Johnson are

featured among their Vandal teammates for their putting skills.

Schmidt and Kowallis are trying to shake early season slumps and regain their top form.

Two of Spokane's top amateurs, Bob Erickson and Mike Bowers, head the Gonzaga roster. Other Zags that will play at Idaho tomorrow are Dick Coles, Kermit Rosen, Randy Fosseen, and Craig Gage.

The Vandal linksters have a previous win over the Bulldogs which was scored April 24, on the

Zags home course at Indian Canyon in Spokane.

Two More

Two more opponents have been added to the Vandals golf schedule, athlete director J. Neil (Skip) Stahley said yesterday.

Snider's swingers will meet Seattle University in Seattle on May 16 and Portland U. in Portland on May 17.

The two contests will be warm-ups for the Northern Division championships in Eugene on May 19-20.

Football Slate Set

A three-game slate for the University of Idaho freshman football team has been approved by the Athletic Board of Control.

The Vandal Babes will meet the same three clubs that last year's team faced — Wenatchee Valley College, Washington and Washington State. Last year's club lost to Wenatchee, 13-7, then topped Washington, 27-15, and WSU, 7-6.

The yearlings will make their lone home appearance against Washington State in Neale Stadium Friday, Nov. 10 at 1:30.

Schedule:

Oct. 21—Wenatchee Valley College at Wenatchee, 8:00 p.m.; Oct. 27—Washington at Seattle, 1:00 p.m.; Nov. 10—Washington State at Moscow, 1:30 p.m.

Rained Out

The Vandal Babes and their rivals, Columbia Basin College, Whitman, were snowed out yesterday in their track meet.

No date has been set for a meet to be held at a later date.

PIT DEGREES AVAILABLE

The last day for signing up for a Ph.D. degree will be May 19. This is, of course, Putting Husband Through, for wives who have "put their husband through."



LEFTY TONY — Vandal chucker Tony Burke shows the windup he will use tomorrow in the varsity-frosh game if he sees action. The Vandals take a weekend off from the Northern Division wars to take on Glenn Potters' charges.

I CAN NOT TELL A LITTLE LIE
I NEED NOT TELL A WHOPPER
A LOT OF PEOPLE EVERY DAY
ENJOY THE TIP TOP TOPPER
"Orders To Go"

Tip Top Drive-In Cafe

THIRD & JEFFERSON EASY PARKING ORDERS TO GO

PIZZA!
13 Varieties
Special Orders on Request
WE DELIVER UNTIL 2 A.M.
Orders over \$5.00 Free.
15c under \$5.00.
BERRY'S HOUSE OF PIZZA
114 East 6th Ph. 2-5331

SENIORS

IF YOU ARE A UNIVERSITY OF IDAHO STUDENT PLANNING TO GRADUATE THIS YEAR

- ★ BUY A CAR TODAY
Late Model Used Cars or a 1961 Chevrolet or 1961 Oldsmobile
- ★ NO DOWN PAYMENT
Low down payment or no down payment depending on your trade-in, new job or credit status.
- ★ PAYMENTS AFTER GRADUATION
Special bank financing plan delays payments until after you have graduated or started work.

Fahrenwald CHEVROLET OLDSMOBILE



Vandals Prepare For Alum Clash With Intrasquad Tilt

The annual varsity-alumni spring football game is a little less than a month away and J. Neil "Skip" Stahley's varsity charges are only six days into their young practice season.

The visiting alumni crew under the management of Gary Kenworthy, Idaho assistant football coach, will not arrive until the day before the two teams tangle in Neale Stadium.

Head football mentor Stahley said that the drills have been equally divided between the offense and defense work.

One of the weakest points of the Vandals last year, defensive drive, is still getting top consideration by Stahley.

Work On Defense

"We've got to get a defensive team able to contain our opponents," Stahley commented.

Stahley expects inexperience to be the biggest drawback for the May 27 game.

"There will be a lot of rising sophomores playing a lot of football," the head coach said.

Little is known on the alumni side of the picture since not all of the possible players have confirmed their availability for the annual clash.

27 To Date

Twenty-seven former Vandal gridgers have enlisted for play to date, with more expected.

Among those returning to the campus are top-flight professionals,

AL'S CAMPUS BARBER SHOP

Most of your life is spent in your shoes.
SHOE REPAIRING
Keeps them looking like new.
STEWART'S SHOE REPAIR
509 1/2 South Main

L&M UNLOCKS CAMPUS OPINION
#4 in a series of polls conducted by L&M student representatives in over 100 colleges throughout the nation.
Light up an L&M, and answer these questions. Then compare your answers with those of 1,383 other college students (at bottom of page).
Question #1: In your opinion, who is the greatest living American?
Answer: _____
Question #2: Should the college curriculum, taking note of the growing importance of science, require more science courses for non-science majors than at present?
Answer: Yes _____ No _____
Question #3: When you kiss your date, do you close your eyes?
Answer: Close my eyes _____ Don't close my eyes _____ Can't remember _____
Question #4: In your opinion, which of the following types of filters gives the best connotation of purity? (CHECK ONE)
Answer: A filter which is white inside and is wrapped in colored paper _____
A filter which is dyed a color and is wrapped in white paper _____
A filter which is white inside and out _____

L&M Campus Opinion Answers:
Answer, Question #1: Six highest scoring individuals: 1. Kennedy—2. Eisenhower—3. Stevenson—4. Schweitzer—5. Frost—6. Sandburg (This question was asked February 1961. Note: Dr. Schweitzer is not an American.)
Answer, Question #2: Yes 30%—No 70%
Answer, Question #3: Close my eyes 76% Don't close my eyes 11% Can't remember 13%
Answer, Question #4: A filter which is white inside and is wrapped in colored paper 21%
A filter which is dyed a color and is wrapped in white paper 5%
A filter which is white inside and out 74%
L&M was first to offer you a pure white modern filter—the famous Miracle Tip—pure white inside, pure white outside. And L&M's modern filter enables you to fully enjoy the rich flavor of golden ripe tobaccos. So reach for flavor... reach for L&M.

UNLOCK A NEW WORLD OF FRESH SMOKING PLEASURE
Start Fresh with L&M Stay Fresh with L&M
The L&M Campus Opinion Poll was taken at over 100 colleges where L&M has student representatives, and may not be a statistically random selection of all undergraduate schools.
© 1961 Liggett & Myers Tobacco Co.

ATTENTION HOUSE MANAGERS
— Now is the time to prepare for summer clean up —
— Call TU 3-3791 for free estimate on —
★ WALL & WINDOW WASHING
★ RUG & UPHOLSTERY CLEANING
★ FLOOR CLEANING & WAXING
★ DRAPE SERVICE & PAINTING
MAX INDUSTRIAL CLEANING, INC.
MOSCOW, IDAHO

The Idaho Argonaut

Klean Kampus Drive To Start

It's Kampus Kleanup time. Members of Blue Key are sponsoring their annual cleanup campaign in preparation for the Mother's Day weekend, next.

Annual ROTC Spring Review To Be May 19

Traditional as the high point on the Spring social calendar, the annual Spring Review, a joint effort of the three ROTC services at the University, is scheduled May 19, not April 19, as was reported earlier.

Most able bodied freshmen and sophomore men will participate in the Review, and a selected number of upperclassmen, those enrolled in the advanced courses, will participate.

In preparation for the event, the also traditional "early morning drill" will begin Monday morning at 7 a.m., and will continue for a maximum of two weeks.

This year the Army unit is in charge of the Review, under the cadet head of Army, Cadet Colonel Tony McFarland, Theta Chi.

An added attraction at the review will be the Companies holding the "Old Soldiers" and "Sad Sack" flags, given to the best and poorest showing companies, respectively.

During training recently, Cadet Captain Mark Holbrook's Company has managed to constantly win the "Old Soldiers" flag.

The drive will start this Saturday at 8:30 a.m., and the trucks, manned by able-bodied Blue Key men will start to roll at 9:30 a.m. According to Dick Nielson, Fiji, general chairman, a steady downpour of rain, or seven inches of snow will be necessary in order to stop the cleanup.

A sound truck will be around at 8 a.m. to remind laggard living groups that the day has arrived.

A list of living group area responsibilities follow. It is naturally assumed that the individual living groups will police around their own house or hall area. In addition, they are supposed to:

French
French, around Ridenbaugh hall; Hays and Forney, home economics building; Ethel Steel and Alpha Gam, tennis courts; Teke, Music Building; Kappa Sig, along Sweet street from Blake to Deakin; Delta Chi and Theta, area around Perch, Nest and the CCC; Fiji, infirmary.

Kappa and Phi Tau, Home Management House; Phi Delt, vacant lot to the side, street in front; DG, check out the back alley; Beta, along Idaho from Elm to Ash, also detail of men to the Arboretum; Sigma Nu and Alpha Chi, to Elm from Idaho, detail of men to the Gym area (pledges); Alpha Phi and Tri Delt, Canterbury house and along Elm from 6th to 7th; Delta Sig, along Deakin on east side to 6th street.

SAE and LDS
SAE and LDS, from Deakin street from Univ. Ave. to Sweet Ave.; Deltas, Forestry building; Theta Chi, along Deakin street on west side from 6th to 7th; Lambda Chi, detail of men to Ad lawn; Lindley, Science building and Geology; Willis Sweet, UCB, Dairy Science, Agronomy building, and the U. Hut.

Chrisman, women's playing field, and art building; McConnell hall, detail to library; Gault, detail to Ag science building; Upham hall, detail to Gym; also detail of men to the Gym area; Campus Club, area around house; Sigma Chi, Ad building and the TC's; Gamma Phi, area around house; FarmHouse, detail of men to the Ad lawn; ATO and Pi Phi, SUB and SUB parking, Idaho street from Deakin to Elm.

Pianist Gives Senior Recital

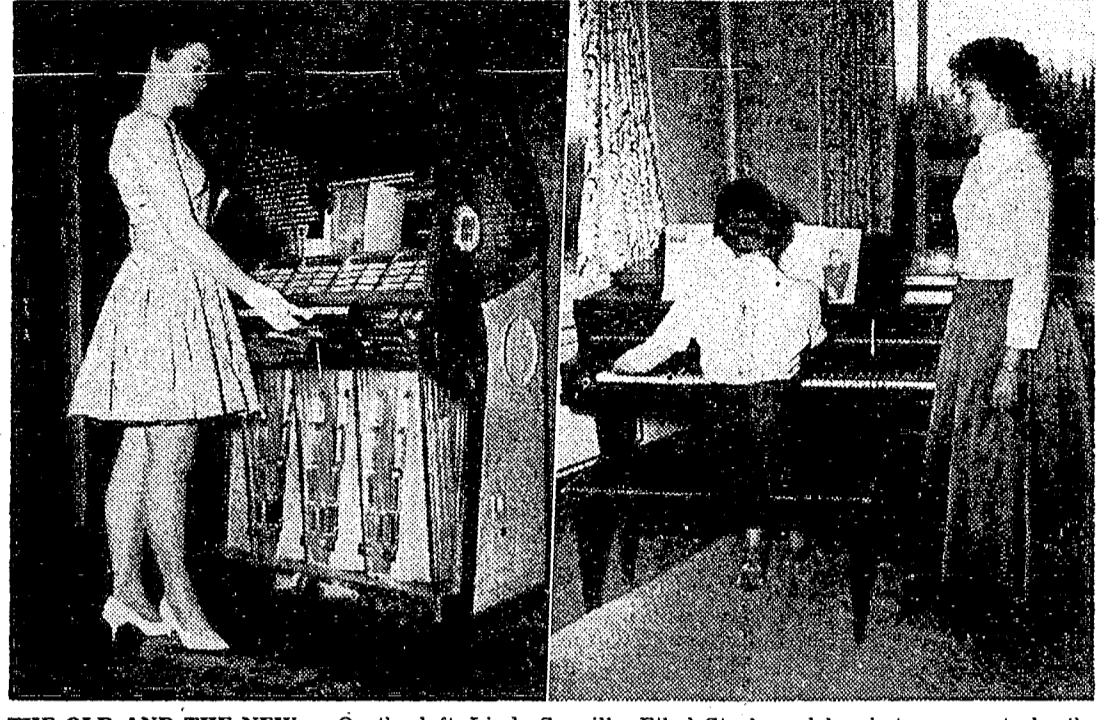
Pianist Russell Crockett, Montpellier, presented his senior music recital yesterday in the University of Idaho Music building.

The 8 p.m. concert in the Recital hall, featuring Crockett, included vocal numbers by Billie Sommers, soprano from Rexburg, accompanied by Georgie Hansen, Moscow.

Music included in the program was Scarlatti's "Sonata in A major," "Variations Serieuses, Op. 54," by Mendelssohn, and "Suite, 'Pour le piano'" by Debussy, played by Crockett.

Miss Sommers sang compositions by Haydn, Hopkinson, Mozart, Respighi, and Puccini. Crockett concluded the recital with Granados' "The Maiden and the Nightingale," and "Scherzo" by Griffes.

AWS TEA HELD
An annual AWS tea will be held this Sunday at 3 p.m. to honor the new AWS officers. Formal installation will take place at this time. Everybody can come according to former AWS president, and former BWOC, Margaret Tatko, Gamma Phi.



THE OLD AND THE NEW — On the left, Linda Scoville, Ethel Steel, models what appears to be the latest styles in modern collegiate atmospheres. On the right, Pat McCarter, also Ethel Steel, wears what Miss Scoville's grandmother probably wore to college classes. (Walt Johnson photos.)

Idaho Third At Army Drill Meet

Idaho's Army Drill Team grabbed third place in the Inland Empire Drill Team Meet Saturday at Gonzaga University.

Montana State University won first place honors and the WSU Army team finished second. Eight schools were entered in the annual meet which will be at Idaho next year.

Schools entered were Central Washington, Eastern Washington, Montana State College, Montana State University, Gonzaga University, and both Air Force and Army Drill Teams from WSU.

The meet ended competition for the Idaho team this year. May 13 they will march in the Lawiston Centennial parade, then they travel to Spokane May 20 to march in the Lilac Festival parade.

Spur, Knight To Be Named

Intercollegiate Knights will announce their "Spur of the Moment," and the Spurs their "Knight of Knights," at the annual Spur-IK Banquet, May 24, at 5:30 p.m., in the Moscow Hotel.

IK's and Spurs are the sophomore men's and women's service honoraries, respectively, who each year present the awards to the IK and Spur who have done the most outstanding work during the past year.

SUB Lengthens; Hems Get Shorter

Pat McCarter, Ethel Steel, takes a stance beside an accompanist Donna Wilcox, Ethel Steel, as she sings tribute to the first days of the University of Idaho. She is wearing the craze of pre-SUB styles.

Petite Linda Scoville, Ethel Steel, could be a figure in either the 1924 or '61 Student Union as she steps to the "music box" to pick her number. Styles have completed a cycle in that time.

When the SUB first opened in 1924 in the small building which now houses the bookstore, the coed's knees peeped below her skirt just as those of today's coeds do.

Since then, hemlines have fluctuated from short to long and back to knee-length, to again grow longer, practically reaching the ankles, in time to grow shorter and shrink above the knees.

The 1924 coed's sweater stopped at the waist, but otherwise resembled the longer-waisted sweater of her 1961 sister. The flares of the 1924 skirt were arranged a little differently but gave the same appearance as modern skirts.

In 1958 chemises popped into fashion but disappeared just as quickly when the distraught males grew tired of straight lines.—IK

The first lighthouse in the English colonies in America is believed to have been one constructed on Little Brewster Island in Boston Harbor.

John Wayne SUB Movie Attraction

John Wayne again rides the trail of "The Searchers" shown in the Borah Theater Saturday at 7 and 9 p.m. for the special price of 10 cents for singles and 15 cents per couple.

Wayne, Jeffrey Hunter, and Ward Bond chase around the Monument Valley country of Utah and Arizona, fighting Indians, fighting each other, and fighting time in one of the great pictures of the American West.

The picture deals with the search for two girls abducted by Comanches shortly after the Civil War. "One of the searchers wishes to return them to civilization; another — to kill them."

The Warner Brothers production directed by John Ford contains plenty of action.

Vera Miles, Natalie Wood, Olive Carey, John Qualen, and practically all of the old Ford gang contribute to the lively show.

WANT ADS GET RESULTS!

May Fete Is Inside Gym; Awards Set

May Fete activities, traditional highlight of Mother's Day weekend, will begin Saturday, May 13 at 2 p.m. in the Memorial Gymnasium under the joint leadership of Mortar Board and AWS.

Karen Stedtfeld, Kappa, general chairman, said the festivities will be held indoors because a baseball game is scheduled for May 13 and the baseball field is the only possible outdoor spot.

Margaret Tatko, Gamma Phi, retiring AWS president, will reign as May Queen. From her throne she will watch the rest of the celebration which includes the Spur Maypole Dance and performances by the University Singers and University Band.

Dr. Donald R. Theophilus University President will announce the top graduating seniors. Mortar Board senior women's honorary and Silver Lance senior men's honorary will tap new members.

Special presentation will include to the outstanding senior woman the Alpha Lambda Delta award who was a member of that organization during her freshman year. The WRA will give its outstanding senior woman a trophy and the IKS, sophomore men's honorary, will present Holy Grail and Outstanding Night awards to two of its members.

Mortar Board will present scholarship plaques to women with the highest scholarship in the freshman and sophomore classes and AWS will announce its new officers and present a scholarship.

Miss Stedtfeld said AWS is financing May Fete, and Mortar Board is making arrangements.

Swiss Prof Talks Geology

Dr. Augusto Gansser of the Department of Geology, Federal Institute of Technology, University of Zurich, Switzerland, will visit the University of Idaho campus Friday, May 5, to speak to geologists on mountain and rock structures.

Well known for his work in Alpine tectonics, Dr. Gansser will lecture at 3:30 p.m. in the Faculty club on "Orogenic Belts and Ophiolites," which concern deformations of the earth's crust.

His visit to the university is part of a three-month tour sponsored by the American Geological Institute. Dr. Gansser is co-sponsored on the Idaho campus by the Idaho Bureau of Mines and Geology.

SUB To Hold 'Hobo Holiday'

Hobos, bums, tramps, and drifters will have their day tomorrow when the SUB holds its annual Open House with the theme "Hobo Holiday." Dress for the day calls for grubby attire.

Under chairman Annette Thorn-

Chief Announces 'Hot Romance'

It had to happen. This seems to be the epitome of the craze to announce a pinning in the strangest possible fashion.

A blaring fire alarm woke the Pi Phi house Tuesday night for a full-scale fire drill. After the drill, the fire chief gave his usual talk on drill procedure and fire extinguishers to the sleepy girls.

"It seems that there is a small flame in this house that the fire department is unable to extinguish," said the fire chief as he was handed a flower-decked candle by one of his assistants. The candle was passed, and Helen Ann Hartley blew it out to announce her pinning to Clarence Chapman, FarmHouse.

The fire chief beamed with the pride of a father of the bride.

Alpha Chi, the Open House will include dancing, a limbo contest, and Jazz in the Bucket plus reduced SUB movie prices and free use of bowling shoes. A display of drawings of the new SUB will be shown.

The dance, a record hop in the Bucket rather than in the North Ballroom as was previously reported, will begin at 1 p.m., continuing through the afternoon and evening.

The music will be live from 4 to 5 p.m., when Fred Gates and his Gateswingers, a WSU jazz quartet, perform in the Bucket.

The limbo contest, also held in the Bucket will begin at 1:30 p.m. and is open to everyone. Record albums will be given to the winners.

Food fit for the highest class hobos will be served in the cafeteria. On the menu will be "Bum-burgers" and "Hobo Delights," the latter being a weird-type sundae.

Special prizes for "The Searchers," a John Wayne epic to be shown at 7 and 9 p.m. in the Borah Theater will be 10 cents for singles and 15 cents for couples.

The movie co-starring Jeffrey Hunter and Ward Bond, tells the story of a year-long search for two girls abducted by the Comanches.

WANT ADS GET RESULTS!

Kenworthy TONIGHT THRU SATURDAY At 7 and 9
Matinee Saturday at 2 p.m.

THE ABSENT-MINDED PROFESSOR
FRED MACMURRAY NANCY OLSON

TUNDAY THRU TUESDAY Sun. 3-5-7-9—Mon.-Tues. 7-9

HOODLUM PRIEST
DON MURRAY LARRY GATES CINDY WOOD

NUART TONIGHT THRU SATURDAY At 7 and 9

ATLANTIS, THE LOST CONTINENT
ANTHONY HALL JOYCE TAYLOR JOHN HALL METROCOLOR

SUNDAY THRU TUESDAY At 7 and 9

OPERATION EICHMANN!
WERNER KLEMPERER RITA LEE DONALD BUKA

TONIGHT THRU SATURDAY At 7 and 9

AUDIAN PULLMAN "GORG0"

SUNDAY THRU TUESDAY — At 7 and 9 — Peter Sellers in "YOUR PAST IS SHOWING"

TONIGHT THRU TUESDAY At 7 and 9

CORDOVA PULLMAN "THE ABSENT MINDED PROFESSOR"

SUNDAY THRU TUESDAY — "ALL HANDS ON DECK"

TONIGHT THRU TUESDAY

Big Sky OUTDOOR THEATRE PULLMAN

ELIZABETH TAYLOR LAURENCE HARVEY EDDIE FISHER

EVERY MAN'S LITTLE BLACK BOOK HAS A NUMBER LIKE BUTTERFIELD 8!

JOHN O'HARA'S **BUTTERFIELD 8**

cinemascope and METROCOLOR M-G-M PICTURE co-starring DINA MERRILL

—plus—

DANA ANDREWS — RHONDA FLEMING in "CROWDED SKY"

SUNDAY THROUGH TUESDAY

Showing First Showing Second

Frank Sinatra—Dean Martin Willard Parker
Sammy Davis, Jr. in Joyce Meadows in
"OCEANS 11" "WALK TALK"

Both in Color

Now— give yourself "Professional" shaves with

NEW SUPER SMOOTH SHAVE

New "wetter-than-water" action melts beard's toughness—in seconds. Remarkable new "wetter-than-water" action gives Old Spice Super Smooth Shave its scientific approximation to the feather-touch feel and the efficiency of barber shop shaves. Melts your beard's toughness like hot towels and massage—in seconds.

Shaves that are so comfortable you barely feel the blade. A unique combination of anti-evaporation agents makes Super Smooth Shave stay moist and firm. No re-lathering, no dry spots. Richer and creamier... gives you the most satisfying shave...fastest, cleanest—and most comfortable. Regular or mentholated, 1.00.

Old Spice SHULTON

JOHNNIE'S CAFE
BREAKFASTS — ORDERS TO GO
STEAKS — SANDWICHES — FOUNTAIN

Open 6 a.m.-1 a.m. Weekdays—6 a.m.-2 a.m. Friday-Saturday
7 a.m.-12 p.m. Sundays

225 West 6th Ph. 2-1352

Commemorate your college career with a CAP & GOWN PORTRAIT by HUTCHISON'S 2-7261

"Where Quality Goes In Before The Name Goes On"

Let our printing experts help you design your House Paper—Rush Booklet Stationery—Announcements

PRINTING THE DAILY IDAHONIAN

409 SOUTH JACKSON — "PRINTERS OF THE ARGONAUT"

FREE ESTIMATES! !
Stop in or phone
TU 2-1435, 2-1436, 2-1437