

RECORD ENROLLMENT MAY PASS 4,200

New SUB Addition Work Will Start Within Few Days

By LARRY ROBY
Argonaut Associate Editor

Construction work on the \$2,113,800 addition to the Student Union Building will begin shortly, according to ASUI General Manager Gale Mix. The bids on the structure were opened Sept. 6 and have been approved by the University of Idaho administration and the Board of Regents.

13 Women In Race For Queen Title

Good progress is being made on next weekend's Homecoming activities according to general chairman Duane Allred, off campus. Thirteen queen hopefuls were announced Wednesday with five finalists to be named Monday. The queen will be selected in a final poll by the men's living groups Wednesday.

Queen candidates are: Linda Campbell, Alpha Chi; Bonnie Scott, Alpha Gamma; Eleanor Unzicker, Alpha Phi; Sharon Stroschein, Tri Delta; Marge Marshall, Delta Gamma; Donna Morgan, Gamma Phi; Pixy Wolverton, Theta; Camille Johnson, Kappa; Karen Kelly, Pi Phi; Sally Buraker, Forney; Toni Thunen, Hays; Darlene Anderson, French House; and Shirley Anderson, Ethel Steel House.

More than 25 high school bands from north Idaho and eastern Washington will highlight the Homecoming parade scheduled to move north on Moscow's Main Street Saturday morning promptly at 9:30. John Ferris, Beta, parade chairman, said 16 living groups had entered in the float competition as of Wednesday. A few more are expected to enter before the parade Monday.

The bands will perform at the half of the Idaho-San Jose State football game Saturday afternoon at Neale Stadium. The game will start at 2 p.m. Warren Bellis, associate professor of music at the University, will direct the halftime program.

Other activities for the 1961 Homecoming weekend include the Alumni brunch, pep rally, bonfire and fireworks Friday night and a Saturday Alumni dinner. Saturday afternoon after the game all the living groups on the campus will hold open house.

USED BOOK SALE
The semi-annual intercollegiate Knights book sale, which started yesterday in the SUB lobby, will offer students a chance to buy and sell used text books until Thursday.

Hours are 9 a.m. to 5 p.m. every day but Sunday. Co-chairmen are Jeff Tollefson, Phi Tau, and Dinneen Cleary, Phi Delta.

Even though sound-proof walls will be built on the north side of the SUB to limit the construction noise, groups meeting in the SUB will be hampered somewhat by the noise.

Seven new meeting rooms are planned for the remodeling of the present SUB ballrooms. The entire area will be made into three multi-purpose rooms which can divide or enlarge into the size desired.

(See Picture on Page 4.)

Lindley, ESH RHC Winners

Lindley Hall and Ethel Steel House have been chosen by Residence Hall Council as the winners of this year's outstanding Halls awards, RHC President Alex Friedman, Willis Sweet, announced.

The traveling trophies will be awarded to the two halls at a banquet later in the year. The winners were chosen by representatives of all the halls for participation in campus activities as a hall, intramurals, campus politics and individual awards won by residents of the halls.

Runners-up in the contest were Forney and Willis Sweet halls, which both won last year's awards.

Vandaleer Tryouts
All students interested in trying out for Vandaleers should meet in Room 216 of the Music Building at 3 p.m.

Glen Lockery, director, said purpose of the meeting is to outline the choir program for the year and for general orientation.



FIRST DAY REGISTRATION — Part of yesterday's record first-day enrollment is shown here in the early stages of registration at the Memorial Gymnasium. At 4 p.m. yesterday the first-day total had soared to an all-time high of 2,102. More than 4,200 students are expected to pass through registration lines by the time registration closes this afternoon at 3:30.

Pratt Resigns Board Seat; United Gains 7-2 Majority

The United Party increased its control of the ASUI Executive Board this week with the appointment of Gary Michael to the seat vacated by Judy Pratt, Campus Union Party (CUP). Miss Pratt did not return this semester.

There are now seven United and two CUP members on the board.

To Fill Mission
Miss Pratt, who campaigned on an AWS reform platform, announced her resignation this summer in a letter to Jim Mullen, ASUI president. She plans to fill an 18-month mission for the Mormon Church.

(Miss Pratt's letter is reprinted on Page 2 in the Dear Jason column.)
Michael lost the ninth seat on the board by three votes in the spring ASUI elections. According to an Executive Board regulation passed last spring, the last person dropped from the ballot will replace any vacancies, despite party affiliation.

Receives Oath
Michael was given the oath of office by Mullen at the Executive Board breakfast Tuesday morning in the Frontier Room.

After the brief ceremony each Executive Board member and executive members gave a summary of summer activities.

Duane LeTourneau, Associate

Sunday Will Be A 25-Hour Day

One hour of extra sleep will be in store for students Sunday when the university switches back to Pacific Standard Time after being on daylight time since last spring.

The changeover will officially take place at 2 a.m., when students will be able to catch up on the hour of sleep they lost the first of May.

'61 Yearbook Now Available

The 1961 edition of the Gem of the Mountains, the University yearbook is now available at the Student Union office. The 352-page memory book can be picked up at the office with the presentation of a 1960-61 student activity card. Office hours are between 8 a.m. and 5 p.m. Monday through Friday.

The cover of this year's book is light brown with dark brown lettering. An outline of "Joe the Vanda" in gold in the upper left-hand corner highlights the cover.

The opening section and the life-like color photographs were reproduced by the lithographic process. The remainder of the book is letterpress.

Gay Tuscon and Cathy Brewer were co-editors of the 1961 Gem and Linda Lamb, Audrian Huff and Warren Reynolds were associate editors.

(Continued on Page 2 Col. 5)

2,102 Register Yesterday; Enrollment Will Close Today

A record first-day enrollment of 2,102 students increased the possibility of bounding the 1961 University of Idaho registration figure well over a record 4,200 mark, according to registration officials yesterday after the first day's registration was completed at 4 p.m. at Memorial Gym.

The prediction of 4,200 was based on early indications from the number of permits to register received at the registrar's office. Last year the University sported a 4,031 total—the first year the enrollment has climbed over 4,000.

This year, in fact, will be the sixth consecutive record enrollment at the University in as many years. One of the problems brought on by the extra-heavy number of students has been a housing shortage.

Council Passes 2.2 Regulation

The University Administrative Council passed a regulation limiting participation in certain extracurricular activities to students with a 2.2 cumulative grade point average Wednesday. The former grade requirement was a 2.0 average.

The regulation resulted from ASUI Executive Board action last spring in passing essentially the same requirements. Charles O. Decker, Dean of Student Affairs, made an investigation of grade requirements for activities at other northwestern colleges and reported on the results.

Does Not Apply
The 2.2 grade requirement does not apply to the following requirements:

- (1) "Students who are engaged in activities which involve registration in a course for which the activity is required for all students registered."
 - (2) "Students who participate in intramural sports."
 - (3) "Students who participate in intercollegiate athletics."
- The 2.2 requirement does apply, however, to students participating in the following activities and projects:

Does Apply
(1) "All elected ASUI and class officers, appointments to all ASUI committees, and appointments to joint student-faculty committees."

(2) "Management or major leadership positions (both paid and unpaid) in all student organizations and enterprises, as determined by the Office of Student Affairs in consultation with the Deans of the respective divisions."

(3) "Debating, dramatic or music projects of students not registered in a course for which participation in an activity is required."

(4) "Other activities not covered in the above categories in which the participants represent the University of Idaho in public performances."

In order to be declared eligible to participate in the above categories of activities a student must:

- (1) Be currently enrolled for at least 14 credits in the University unless the Administrative Council makes an exception for him.
- (2) Not be suspended or expelled from the University, not be on conduct or academic probation or not be academically disqualified.
- (3) Have a cumulative grade point average of 2.2.

Decker Backs
"This regulation is a definite improvement," Decker commented. "I'm a firm believer in raising scholastic standards, and it could provide an incentive for those persons who participate in extracurricular activities to achieve a higher level to participate."

The regulations had been put to the Administrative Council two or three times last spring and was subsequently revised by Executive Board before being submitted Wednesday, ASUI President Jim Mullen said. "As far as I'm concerned and as far as the Board members I've discussed it with, it concurs with the idea originally considered in revising the requirements," he added.

Mullen said the action was the first step by a northwest school in raising eligibility requirements. The schools Decker discussed the idea with expressed interest in the regulation's outcome at Idaho, he added.

University students also like to express the landmarks of their school with the most descriptive adjectives.

And the most descriptive adjective for the newest structure on the campus according to some student circles is not "a new structure to Hello Walk," but "Massacre Rock."

Wonder what the architects think of that.

GROUP TO MEET
The Christian Science organization of the University will meet Sunday at the home of Mrs. Leroy Bauer, 704 West C St. for its first informal get-together. The meeting will start at 5:30 p.m. The group will meet every Thursday evening at 6:30 in the Campus Christian Center.

Prominent business leaders who will present views and ideas concerning specific areas of Idaho's business and economic activity are John L. Aram, vice president of Weyerhaeuser Lumber Co. of Tacoma, Wash.; Robert V. Hansberg, president of the Boise-Cascade Lumber Co. of Boise; and L. J. Randall, president of Hecla Mining Co. of Wallace.



Gary Michael
Professor and Associate Chemist in the Agricultural Science Department, was introduced. He will replace Charles F. Peterson, professor and poultry husbandman, as Executive Board faculty advisor.

Business included a report by Mullen on the NSA Conference held in Madison, Wisconsin, this summer, and a brief discussion of Freshman Orientation Week.

Terry Mix, board member, gave details of the Student-Faculty retreat to be held Oct. 7-8 at Camp Lutheran.

Orientation Week Keeps Freshman Students Active And Bewildered



NEW WALK FOR NEW STUDENTS — Carl Berry, Sigma Nu, public relations chairman for the University, points out the new "organic design" of the Hello Walk rock entrance way, which was completed this summer. Keith Huettig (second from left), Delta Sig, chairman of Freshman Orientation Week, was directing the two new students on the right of the handrail, Judy Tuscon, Delta Gamma, and Joy Esser, Upham Hall, around the campus as part of the orientation.

Under the guidance of Keith Huettig, Delta Sig, an extensive program is being carried out to acquaint some 1,200 new students with campus life, both socially and academically.

Starting with the President's Convocation Sunday night, freshmen have been occupied with meetings, teas and dances.

In addition to conferences with advisors, meetings have been held to inform the new students on registration procedures and to acquaint all new male students with the ROTC program on campus.

A tea was held in the student union for all new women students Monday afternoon. Interspersed with all these activities was men's rush and entrance exams.

A freshman mixer was held last night to meet students only. An all-campus mixer is scheduled for tomorrow night. Dick Stiles and his Stylists will provide the music.

Tonight the SUB is holding an open house, and combining the features of last year's event with the former Campus Carnival. All campus organizations will have booths on the second floor.

There will be dancing in the North Ballroom and in the Dipper. A Homecoming movie will be shown in the Borah Theatre. Downstairs there will be free bowling and coffee and cokes for a nickel.

New student activities will end October 7 with a New Student-Faculty Forum. New students will meet with the faculty in two-hour sessions and discuss their academic responsibilities and opportunities.

Committee chairmen under Huettig are Mary Lynn Evans, Alpha Phi, Dance Committee; Elaine Smith, Alpha Phi, New Women's Tea; ROTC Assembly, Hugh Allen, Beta; Jo Milholland, Hays, Name Tags; Bruce Will, Lindley, Facilities; and Phil Roberger, Sigma Nu, publicity.

Massacre Rock Or Hello Walk?
University students just won't use an old name for a new structure.

University students also like to express the landmarks of their school with the most descriptive adjectives.

And the most descriptive adjective for the newest structure on the campus according to some student circles is not "a new structure to Hello Walk," but "Massacre Rock."

Wonder what the architects think of that.

GROUP TO MEET
The Christian Science organization of the University will meet Sunday at the home of Mrs. Leroy Bauer, 704 West C St. for its first informal get-together. The meeting will start at 5:30 p.m. The group will meet every Thursday evening at 6:30 in the Campus Christian Center.

Prominent business leaders who will present views and ideas concerning specific areas of Idaho's business and economic activity are John L. Aram, vice president of Weyerhaeuser Lumber Co. of Tacoma, Wash.; Robert V. Hansberg, president of the Boise-Cascade Lumber Co. of Boise; and L. J. Randall, president of Hecla Mining Co. of Wallace.

The GOLDEN FLEECE

by Jason

In Greek mythology a ship called the Argonaut carried its crew in search of a golden fleece. Guiding the ship was a man named Jason.

In 1961 there is still an Argonaut in existence, and in a sense it is also a ship. The Argonaut today is of course the Idaho student newspaper.

The Argonaut rides on the waves of student thought, riding in highest glory when a political or social storm is brewing on campus or in the nation, and students turn to its pages for facts and information.

The Argonaut can only justify its designation as a carrier of news when it presents all the facts and all sides of an issue as fairly and unbiasedly as possible.

If only one side is represented, the ship will begin to lean to one side, and before long go down with a wave of protest. The students of the University of Idaho each year authorize the Argonaut to carry them the news, and provide the finances and support for the voyage.

These students, therefore, have every right to let the editors, or navigators, know their opinions and attitudes on any story or editorial comments that appear in the Argonaut.

Student or faculty comments which are constructive and beneficial to the student body will be reprinted in the Dear Jason column. In each case, however, the editorial staff reserves the right to edit.

Even though the Argonaut must give every side a chance to be heard on its news pages, it pursues a straight course on its editorial pages. Editorial policies do not change direction every time a new political wind begins to blow.

The editorial staff meets several times each week and tries to determine policy. These policies are then expressed in this column and in other editorials on this page.

The editor, Jason, and other members of the staff welcome the opinions of all students in formulating editorial policy.

Thus, the Argonaut is both a leader and a follower. It attempts to lead the students toward certain ends and goals, but at the same time tries to meet the demands of the student body for objective reporting in news, good makeup and graphic art, and carefully edited work.

Since the Argonaut changes navigators each year, the beginning of the voyage is always rough. However, with some good luck and the support of the student body, sailing should be smooth after the first few issues.

Jason and the Argonaut are not actually searching for a Golden Fleece this year. The opportunity to publish a student newspaper, free of any administrative censorship, is a prize, or Golden Fleece, held by few colleges in the nation today.

But the Argonaut IS seeking to help build an informed, active student body.

Only by working toward this goal will this paper ever justify its existence as a student publication, or enjoy the confidence of the University and state.

—Sharon Lance,

Extend Welcome



ASUI President



U. of I. President

Four years ago this fall I made my first tour of the University of Idaho campus and noticed a few empty lots and old wooden structures here and there. There are still a few empty spaces and a couple of wooden structures left, but a new mines building, a new library, three new dormitories, four new Greek living groups, new quarters for the College of Law, and new parking lots mark the progress made by your University in the last few years. Within three more years you will be using a new science building, a new student union, and many of you will be living in new dormitories and houses.

You are studying in an atmosphere from which many outstanding graduates have matriculated. Among them are the vice president of the Ford Foundation and former dean of the Harvard graduate school of business, the president of General Electric atomic energy division, and numerous others.

Many of your professors are distinguished authors, research scientists, and advisors to such groups as the U. N. and the U. S. government departments.

Just three weeks ago I returned from a national student body presidents' conference at which the problems of the various American college campuses were aired and discussed, and I am convinced that the Associated Students of the University of Idaho have a student government system that will match or surpass that of any other college in effectiveness and efficiency. We are making progress in areas such as legislative emphasis and student public relations that many other schools cannot or have not participated in.

Of course, we have room for improvement and we are constantly trying to do so, but as in everything, the system is only as good as the individuals making it up. We are all part of the University of Idaho in everything from academics to athletics. Find out about your University. Don't waste two months or two years of your valuable time here at the University of Idaho. The door to the A.S.U.I. office is always open and your Executive Board members and I will be glad to help you in any way we can.

The Executive Board joins with me in welcoming you to the Idaho campus for the 1961-62 school year and wish you the best of luck.

R. James Mullen

It is a real pleasure to see the campus come alive again as it does each fall with students coming to the University of Idaho. University life is a wonderful experience, make the most of it. You must take full advantage of your opportunities to be successful here and later in life. Only one formula is necessary to achieve this... do what you are supposed to do when you are supposed to do it.

This business of education is a two-way street. The opportunities are here and you must be ready to accept their challenges. To do less than you are capable of doing is a waste, and in view of our race against communism, a tragedy.

Study hard and play hard, but remember studies come first. I wish you much success in your career at the University of Idaho.

Dr. D. R. Theophilus



Readers are invited to take advantage of the Dear Jason column. Letters to the Editor, due to space limitations, should not exceed 200 words. The Argonaut reserves the right to edit all letters.

The following letter was written to ASUI president Jim Mullen by executive board member

Pratt Explains

Dear Jim, Just a short note to tell you I've been called to fill a mission for the Church of Jesus Christ of Latter Day Saints. I am going to the Scottish-Irish Mission for 18 months.

Because of this I will not be able to fulfill my duties on E. Board. I wish you the very best of luck during your administration. I realize the Greeks and Independents should work together more. Each could benefit the other with new and original ideas.

I thank the ASUI and the students for electing me and wish everyone a very successful school year.

Sincerely,
Judy Pratt

BOWLING TEAM TRYOUTS
Student Union Building bowling team tryouts in the SUB game room will be announced soon, according to ASUI General Manager Gale Mix. Students interested in mixed leagues should contact Bill Logan, off campus, in the game room.

Grades First, Then Activities

As a result of action taken by the University's Administrative Council Wednesday, there might be a few less "activity majors" around the campus this year. Some of them are going to have to spend less time at the conference table and more time at the study table.

After the ASUI Executive Board hassled over the proposal last spring, the Council passed a regulation raising the cumulative grade point average requirement for participation in extra-curricular activities. The required GPA is now 2.2, not 2.0.

The measure doesn't cancel activities for everyone. It doesn't apply to intramural or intercollegiate sports, nor does it apply to activities in which students must participate as part of a course, such as Vandaleers.

Other parts of the new regulation are rather loosely worded and are admittedly "catch-all" phrases so that the rule doesn't have to be followed to the letter for students in possibly exceptional cases who might have special reasons for being allowed to participate in certain activities despite a grade point of below 2.2.

The measure wasn't passed without opposition, of course. Some students feel that since only a 2.0 is required for graduation, only a 2.0 should be required for participation in extra-curricular activities.

They may feel that the University's administrative heads are trying to discourage activities. The primary purpose of going to college, however, is to study. When an activity-minded student is barely making high enough grades to graduate, he should be worrying about his studies, not thinking about activities. It's silly to let activities keep a student from graduating, and it's selfish on the student's part to hold down an important activity when, in order to maintain decent grades, he hampers the work of an activity or committee by being unable to spend a sufficient amount of time working on it.

Another argument heard against the new regulation is that it isn't a duty of the ASUI to baby-sit for those students who couldn't realize their own abilities by handling too many activities and studies. But if the student isn't going to do anything about limiting himself to his own abilities, then somebody else should. That's what the new regulation will do.

The statistically average student will get a 2.0, and he'll graduate. But activities aren't for the statistically average student, despite the argument that everyone has a right to participate in activities. Activities are for the student whose ability is a bit above average and who can handle extra work because he isn't worried about flunking out.—N. M.

HERE'S MORE ABOUT— Death Claims

post since University policy calls for all administrative officials to resign their supervisory duties at that age. He was then promoted to emeritus head of the dairy science school.

Four was a member of the American Dairy Science Ass'n and had written over 100 articles discussing the importance of the dairy industry. During his 11 years as University dairy specialist, Four was instrumental in starting community dairy shows throughout southern Idaho.

The dairyman, who was listed in the 1950-51 Who's Who in America, brought many awards to the University of Idaho's agricultural college. Eighteen constructive breeder awards by the American Jersey Cattle Club and 15 progressive awards by the national Holstein Ass'n went to the University's dairy herds under his management.

4 Hit Tickets Are Available

Season tickets for four Broadway hits which will be brought to Spokane by the Inland Empire Broadway Theatre League during the 1961-62 season are available through Dr. Edmund Chavez, assistant professor of dramatics.

Chavez is Moscow representative for the league. Memberships are available now during a sales campaign running until tomorrow. All performances will be at Spokane's Post Theater with two performances, one night only, at 8 and 9:30 p.m. Tickets will be sold on a season's membership basis, with no single performance tickets available.

The four plays will be "Elizabeth the Queen," starring Eva LaGallienne and Faye Emerson; "Thurber Carnival," starring Arthur Treacher, King Donovan and Imogene Coca; "The Critics' Choice"; and Gore Vidal's political comedy, "The Best Man."

Though only 30 feet long, a killer whale will attack a 100-foot-long blue whale.

Lack Of Water Brings Problems

Lack of hot water can sometimes bring more worries than rush ever has among a certain fraternity.

Men have been seen scurrying back and forth between the SUB and the ATO house with towels

and other shower equipment. While this has caused some speculation one should be philosophical about this sort of thing and contribute it to enthusiasm generated by television ads about hygiene.

The Idaho Argonaut

Member
Associated College Press

Official publication of the Associated Students of the University of Idaho issued every Tuesday and Friday of the college year. Entered as second class matter at the post office at Moscow, Idaho.

- Editor: Sharon Lance
- Associate Editor: Larry Roby
- Managing Editor: Jim Herndon
- Political Editor: Jim Metcalf
- News Editor: Neil Modie
- Sports Editor: Herb Hollinger
- Women's Editor: Ann Spiker
- Copy Editor: Barbara Stivers
- Assistant Copy Editor: Sherry McGuire
- Photographer: Stan Hui
- Advertising Manager: Dell Kloepper
- House Editor: Mike Anderson
- Cartoonist: Bridget Beglan, Leo Ames

Welcome:

Finest Food Finest Service

Varsity Cafe

1
FREE With Every
2
Pkgs. Purchased

CHESTERFIELD L & M
OASIS

SIC FLICS

"I think Professor Armitage will agree with me that our administrative staff is of the highest caliber!"

21 GREAT TOBACCOS MAKE 20 WONDERFUL SMOKES!
AGED MILD, BLENDED MILD—NOT FILTERED MILD—THEY SATISFY

SHEAFFER'S
new compact cartridge pen

Never goes near an ink bottle! Loads like a rifle with big Strip cartridge.

Full size when you write... shorter, more convenient than other pens when closed.

• For smooth, easy writing, there's no substitute for a true fountain pen.
• New "see-thru" window shows ink supply at all times.

\$10

Matching pencil, \$4.95
Other Pens from \$5

A complete stock of Sheaffer's cartridge pens priced from \$2.95 to \$12.50.

CARTERS DRUG STORE
Chas. Carter and Sons
Phone TU 3-4561 Moscow, Idaho

THE HAMBURGER

- NUDEBURGER** — A patty with nothin on
- STRIPBURGER** — Twopatties without trimming
- 1940 BURGER** — The way Rogers' made it in 1940 with our own relish, lettuce, pickle and chips
- PARMESAN BURGER** — Toasted parmesan bun with delicious hamburger in the middle, tomato, lettuce, pickle and chips
- MEXICAN BURGER** — Two patties smothered with our own salsa fria, ole!
- ROQUEFORT BURGER** — Imported roquefort melted in the heart of two hamburger patties
- CHEESEBURGER** — Garnished with sharp American cheese
- IDAHOBURGER** — Two patties of hamburger with Idaho cheese in middle
- ONIONBURGER** — Smothered in grilled onions
- THE SCRAMBLEBURGER** — Scrambled eggs and chopped onions served over a hamburger patty
- DELUXE HAMBURGER** —

ROGERS ICE CREAM
Across from Safeway

RECORDS SALE

\$1 OFF

ON ALL REGULARLY PRICED RECORDS

2.98 and up

INCLUDING SPECIAL STEREO RELEASES

- ★ RCA STEREO ACTION
- ★ LONDON PHASE FOUR
- ★ COMMAND
- ★ TIME PLUS

All The Favorites

- LIMELITERS
- KINGSTON TRIO
- AND OTHERS

HADDOCK AND LAUGHLIN

Friday, Sep

A pledge of pledges Henderson Christensen

As 184

A total of pledged at the University it was announced Marjorie Men.

Pledging with ALPHA Gamma Phi Laina Phil Marilyn W Sandra Cha la Clarke, a Fuhrman, Sylvia Ho Alene; De

Idaho Students Are Married Over Summer

Marriages of University of Idaho students were numerous this summer, as evidenced by tabulations of the various living groups on campus.

ALPHA CHI — Joy Edwards to Mike Reeb, Sigma Nu.; Edie Voorhees to Duane Allred, Delta; Judith Russom to Jack Gustavel, Kappa Iota; Susan Shaw to Eldon Feler, Delta Sig.

ALPHA PHI — Jeanne Walker to Jay Cline, Sigma Chi.
ALPHA GAMMA — Jo Roberts to Doug Peterson, off campus.

TRI DELTA — Karen Sasser to Earl Pfeiffer, Sigma Chi; Arlene Turnbull to John Fleming, Teke; Joyce Eld to John Allgair, ATO; Sandy Fritz to Jim Brannan, Fiji; Lois Axtel to Phil Woolwine; Judy Freeman to John Hook, Orofino; Ginger Norwood to Leon Hansen, Hagerman.

DG — Sonia Allen to Bob Alexander, Sigma Chi; Sandy Worsley to Curner Green, Kappa Sig; Judy Stahl to Jerry Clifton, Sigma Nu.; Judy Scanlon to Jerry Hult, SAE; Betsy Taylor to Tony Park, Kappa Sig.

GAMMA PHI — Carol Carson to Walt Pederson, Spokane; Mary Joyce Rambo to Jim Decko, McConnell Hall; Jill Fouche to Clint Mowery, Kappa Sig; Norma Mowery to Dave Frazier, Sigma Chi.

FRENCH — Norma Schroder to John Holman, off campus; Jean McLeod to Stan Lamb, Delta Sig; La Moyne Lyda to Don McLeod, Willis Sweet; Raylene Baune to Jerry Casper, Moscow; Joan McEachern to Mike Keller, WSU.

ATO — Mike Baum to Beverly Brown, California.

BETA — David Emory to Janice Carlson, Tri Delta.

DELTA CHI — Del Gowlan to Evelyn Peterson, Forney.

DELTA CHI — Del Gowlan to Evelyn Peterson, Forney.

DELTA SIG — Ron Galbraith to Judy Carr, Eagle; Bob Scott to Bonnie Anderson, Minneapolis; Gerald Metcalf to Helen Schiffer, French.

DELTA — Chuck Robertson to Diane Heller, Gamma Phi.

FARMHOUSE — Marvin Heilston to Merlene Allen, Alpha Chi.

KAPPA SIG — Pat Townsend to Sharon James, WSU; Lee Holloway to Sharon Carpenter, Layette; Ken Yabraes to Mary Johnson, Boise;

Ken Patton to Jerry Swank, Forney; Jim McBride to Marge Ingle, Kendrick.

LAMBDA CHI — Fred Decker to Mary Jauregui, Alpha Chi.

FJI — Gordon Walker to Bobbie Tohn, WSU; Ron Thurber to Rena Schartner.

PHI TAU — Dick Powers to Stella Stout, Salmon.

SAE — M. L. Gates to Karen Koontz, Pi Phi.

SIGMA CHI — Warren Board to Mary Jo Cahoon, Boise; Jan Wendle to Franlyn Needs, Sandpoint.

SIGMA NU — Gary Farnworth to Diane Wade, Whitman College; Joe Davis to Kathy Gorton, WSU.

TEKE — Bill Tilton to Coy Ann Ball, Tri Delta.

THETA CHI — Bill Fletcher to Sheryl Eldred, WSU; Dave Billows to Charlotte Kinzer, Genesee.

KAPPA — Patsy Rogers to Gordon Goff, Sigma Nu; Jere-Rae Rasmussen to Mac Soden, Fiji; Judy Finney to Doug Anderson, Willis Sweet; Mary Youngstrom to Harry Stunz, Sigma Nu; Jan Browning to Roger Inghram, Grandeville.

THETA — Sharon Weaver to Dean (Continued on Page 7 Col. 4)



BETA COMBO AT RUSH — Four Betas, from left to right, Bob Robinson, Dennis Cromwell, John Ferris and Gary Carlson entertain rushees at one of the many men's rush activities held on the Idaho campus this week. Tom Kale watches the musical combo perform.

16 Campus Fraternities Pledge Record 327 Men

A new record fraternity rush has been set at the University of Idaho as 327 students pledged 16 national fraternities on the campus. Last year's rush, the previous high, was 270 pledges.

Pledging were:
ALPHA TAU OMEGA — Bob Robideaux, Joseph H. Chapman, Pat Wicks and Mel Jones, Coeur d'Alene; Roger Bickmore and Jack Bradford, both of Pocatello; Gary Leon Densow, Lou Olds and William Denton, Lewiston; Kellogg; Doug Towles, Orofino; Craig R. Lundahl and Gary Bradshaw, both of Idaho Falls; Ted A. Pursley, Sandpoint; Ronald Jay Hexum and David P. Elder, both of Mountain Home; Charles Kozak, Seattle, Wash.; Rod Mullen, Coulee City, Wash., and Tom Robinson, Lisbon, Spain.

BETA THETA PI — David Hill, Rex Hamilton, Jim Strong and Jere Robertson, Boise; Larry Maupin, Twin Falls; Gary Ellsworth and John Fisher, Idaho Falls; Eric Hove and Frank Vosika, Kimberly; Mark Brown, Blackfoot; Miles Michael Rice, Riggins; John Miller, Emmett; John Armstrong, Lewiston; Larry Blackburn, Middleton; Jeff McQueeney, Vancouver, Wash.; Fred Goodpaster, Seattle, Wash.; Paul Lawrence, Evert, Wash.; Donald Howse, Altadena, Calif.; Larry Strom, West Covina, Calif.; Ray Rocha, Ferndale, Calif.; Pat Killen, Spokane, Wash.; Tom Eidson, Baker, Ore.

DELTA CHI — Harold Anderson, Arco; Jim Davis, Bill Kerns, Mike Bonnell, Ken Weaver and Skip Wingfield, Boise; Terry Rypkema, Gene Green, Frank Jakomeit, Gary Chipman, and Mike Reidy, Mt. Home; Wayne Miller and Gordon Vining, Jerome; Dick Geary, Grangeville; Lorenzo Nelson, Firth; Kirk Eberhard and Johnny Parker, Blackfoot; Doug Yearsley, Pocatello; Dick DeAtley, Lewiston; Dave Wyatt, Lapwai; Clarence Kleber, Denver, Colo.; Jerry Merritt, Coeur Falls, S. C.; Everett Martindale, Palo Alto, Calif.

DELTA SIGMA PHI — Ted Burke, Bob Hofmann and Travers Huff, all of Moscow; Joe Bonnichsen, Filer; Dick Jennings and Ron LaMarche, Lewiston; Dennis Tanner, Hansen; Danny Stivers, Edena; Gerald Huettig, Gary Ayers and Terry Stigile, Hazelton; Dean Bentley and Dave Hansen, Eagle; Carl Hamilton, Nampa; Jerry Martin, Post Falls; James Goade and James Arriola, Boise; Stelvin Downs, Rupert; Dennis DeBolt, Wallace; Gerry Veltrie and Jerry Veltrie, Coeur d'Alene; Pat Noonan, Everett, Wash.; Mike Jones, Mukitill, Wash.; Ward Keller, Toledo, Ohio; Tom Lynch, Ogden, Utah; Ed Baber, Coal City, Ill.

DELTA TAU DELTA — Brian Hill, Boise; Jim Keaton, Burley; Jack Patrick, Caldwell; Jim Berry, Gooding; George Conner, Idaho Falls; Bill Van Orman and (Continued on Page 6 Col. 4)

DELTA SIGMA PHI — Ted Burke, Bob Hofmann and Travers Huff, all of Moscow; Joe Bonnichsen, Filer; Dick Jennings and Ron LaMarche, Lewiston; Dennis Tanner, Hansen; Danny Stivers, Edena; Gerald Huettig, Gary Ayers and Terry Stigile, Hazelton; Dean Bentley and Dave Hansen, Eagle; Carl Hamilton, Nampa; Jerry Martin, Post Falls; James Goade and James Arriola, Boise; Stelvin Downs, Rupert; Dennis DeBolt, Wallace; Gerry Veltrie and Jerry Veltrie, Coeur d'Alene; Pat Noonan, Everett, Wash.; Mike Jones, Mukitill, Wash.; Ward Keller, Toledo, Ohio; Tom Lynch, Ogden, Utah; Ed Baber, Coal City, Ill.

As Sorority Rushing Ends 184 Women Are Pledged

A total of 184 women have pledged at the nine sororities on the University of Idaho campus. It was announced today by Mrs. Marjorie M. Neely, dean of women.

Pledging were:
ALPHA GAMMA DELTA — Dorothy Anne Frazier, Pocatello; Connie Largent, Garfield, Wash.; Maryvis Peterson, Coeur d'Alene; Susan Snyder, Post Falls; Linda Sologala, Shoshone; Eldene Steele and Sharon Tribble, both of Moscow; Cheryl Taylor and Nancy Tubbs, both of Spokane; Dorothy Van Loben Sels, Menlo Park, Calif., and Mary Wenko, Boise.

ALPHA CHI OMEGA — Kay Adams and Lynda Colpin, both of Payette; Ann Albee, Buhl; Karen Benke, Tacoma, Wash.; Heather Bennett, Idaho Falls; Linda Bilow, Nez Perce; Carolyn Bush, Carolee Crowder, Helen McCoy, Sharon McQuade, Linda Minshew, Laina Phillips, Anne Shaw and Marilyn Wallace, all of Boise; Sandra Chatfield, Richfield; Pamela Clarke, Colleen Mace and Sharon York, all of Lewiston; Carol Fuhrman, Kuna; Enid Gerrie and Mary Lou Levi and Wanda Lee Miller, both of Nampa; Lorraine Lundin and Judy Schmidt, both of Spo-

rkane; Karen Hillman, Genesee; Marilyn Myers, Gooding; Marilyn O'Keefe, Challis; Darlene Osborn, New Meadows; Jeannie Pfaff and Cheryl Robinson, both of Nampa; Kaye Prior, Margaret Tolleson and Karen Anderson, all of Moscow; Brenda Sharp, Salmon; and Pat Sullivan, Mountain Home; Jerry Gragg, St. Maries, and Sandra Pratt, Grangeville.

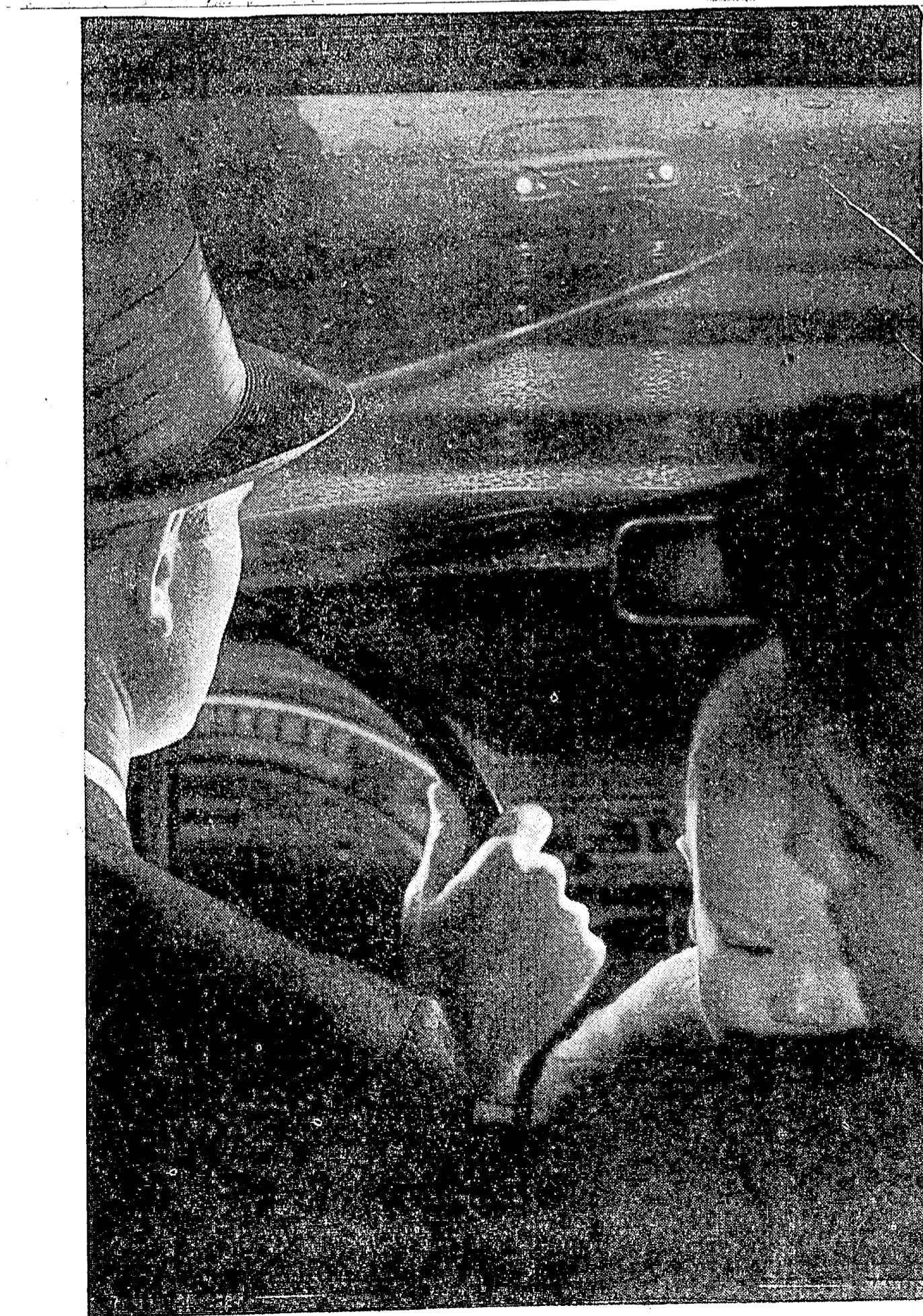
ALPHA PHI — Paula Artis and Christianne Cook, both of Boise; Carol Ann Baldwin, Lewiston; Sandra Berger, Genesee; Irene Bishop and Caryn Snyder, both of Nampa; Rosalie Bishop, Carol Wills, and Myrna Wills, all of Twin Falls; Anita Cox, Bliss; Georgann Galbraith and Dianne Teplly, both of Mountain Home; Kathie McConnell, Quincy, Wash.; Vickie Nogle, Bovill; Jeri Jarel Ross, Coeur d'Alene, and Melodie Ann Smyser, Parma.

DELTA DELTA DELTA — Marilyn Helle Abbeal, Margaret J. Bowlin and Catherine Jones, all of Moscow; Carol Louise Blair and Neataw Evans, both of Boise; Karen Collins, Libby, Mont.; Mary Lou Levi and Wanda Lee Miller, both of Nampa; Lorraine Lundin and Judy Schmidt, both of Spo-

rkane; Carol Lee Meurer, Caldwell; Betsy Morken, Carmichael, Calif.; Linda Kay Nelson, Blackfoot; Karlin Pearson, Wallace; Michelle Pierce, Lewiston; Karla Repp, Endericott, Wash.; Bonnie Robertson and Jean Ann Schodde, both of Burley; Patricia Russell, Pullman, Wash.; Donna Rae Smith, Rigby; Joan Tyler, Rupert; Sharon Wender, Camp LeJeune, N. C., and Yvonne Wilmot, Idaho Falls.

DELTA GAMMA — Kathy Baxter, Buhl; Carol Bieda, Linda Stahl and Kathy Jo West, all of Boise; Diane Cenis and Sharon English, both of Spokane; Carolyn Cripe, Wallace; Susan Davis, Alhambra, Calif.; Helen DeGlee, Twin Falls; Trudy Dretke and Jacqueline Johnson, both of Pocatello; Johanna Jones, Blackfoot; Karen Jones, Hansen; Nancy Kaufmann, Idaho Falls; Lynn McBride, Caldwell; Sherry Meyer, San Leandro, Calif.; Linda Olin, Kimberly; Rhea DePatrick, Castleford; Linda Scoville, Polatch; Elaine Tegan, Filer, and Judy Tuson, Kellogg.

GAMMA PHI BETA — Pat Carlson and Jean Farley, both of Boise; Barbara Collins, North Hollywood, Calif.; Jo Anne Croy, Chelan (Cont. on Page 6 Col. 8)



"Talking road" that can save your life!

The visibility is almost zero and ahead is a sharp curve. Suddenly, beneath your wheels, the road says: "Slow down!" It does this by sending sound and low vibrations through your automobile's frame. You get the message and cut your speed.

This road warning system—called a "rumble strip"—cut accidents in test areas by nearly two-thirds. It is made chiefly from a new kind of plastic developed by Standard's scientists...one so rugged that it will stand up to the pounding of the heaviest traffic.

The rumble strip is part of Standard's continuing interest in traffic safety, which includes driver training, seat belts in Company cars, educational films for schools, and widespread distribution of safety tips.

The tough plastic which makes the rumble strip possible is only one of a wide variety that our scientists are creating to help manufacturers bring you new and better products. They include super-strong plastics for car bodies; tough, versatile plastics for building materials; long-lasting plastic fibers to increase the durability of everything from clothing to tires.

planning ahead to serve you better
STANDARD OIL COMPANY OF CALIFORNIA



ART SUPPLIES

KEN'S Stationery
—Across from Theatres—

It's here!
annual 1/2 price sale
Desert Flower hand and body lotion

Softens
Smooths
Protects

large 2.00 size, **1.00** plus tax
8 oz., now
Take home a houseful at half price... for the bedroom, bathroom, kitchen and guest room. Exclusive 'heart' of lanolin formula softens, tones and restores moisture to your skin... protects from chapping.
by SHULTON
MARK'S HOME GOODS
MOSCOW'S Super Dept. STORE

Smoothest lines in town! Brand-new
NYLON CORD
Run—don't walk—to get **KEDS** cares taken out. Washes the latest **KEDS** and wears news in shoes! Your favorite U. S. Keds, with a new pointed toe and a trim cord look! The secret is a marvelous new fabric with a sheen built in, and all the as only nylon can. Has that great Keds feeling and fit.
In lustrous Gold, Loden Green, Black, White, Raspberry or Sea Blue. Narrow and Medium widths. Hurry on in for yours.
Only **5.95**
DAVIDS'
DEPARTMENT STORE — MOSCOW

Campus Building And Repairs Total About One Million Dollars

Workers on 20 construction projects faced to complete jobs before the arrival of students for the fall semester.

Commercial Builders of Moscow had a \$72,000 contract to improve Blake Ave. and Nez Perce Dr. Blake was widened 14 feet and the front of Heltz Walk changed.

All told, over one million dollars was spent over the summer on remodeling, road building and new building construction.

Largest project to be completed was the \$525,000 Mines building. It was financed one-half by contributions from the Idaho mining industry and one-half by state appropriations.

A new \$170,000 home for the Alpha Chi Omega sorority was constructed during the summer months.

In other construction \$404,000 was spent for improvements to University buildings and facilities. Most of the money used for these jobs had been set aside over the last ten years.

The largest chunk of the \$404,000 bid letting was an \$83,000 contract to United Paving of Spokane for the extension of Rayburn St. north 800 feet to the Pullman Highway.

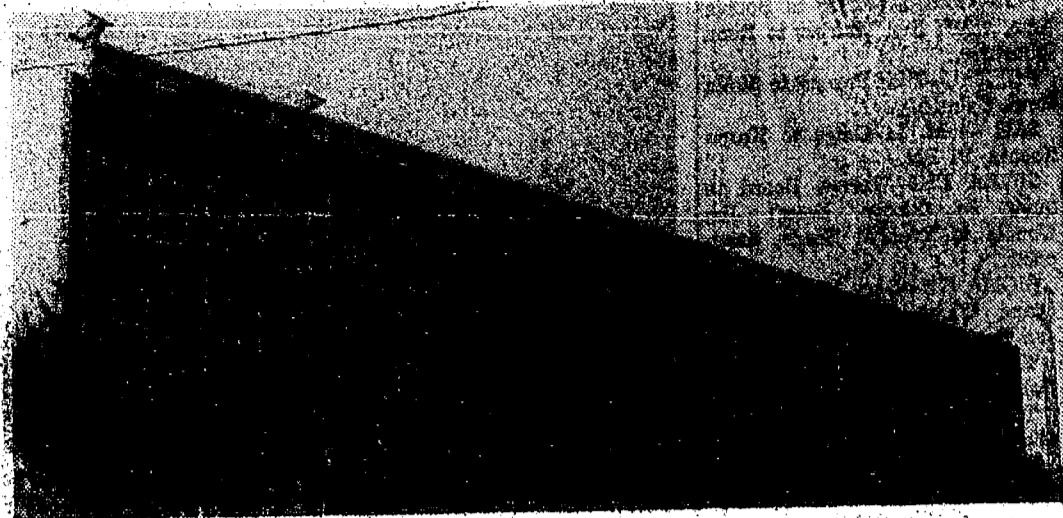
Nez Perce Dr. is still in the paving stage. Gravel has been graded on the road, which runs in front of the golf course and a coat of paving will be put on within the next few weeks.

The offices of President D. R. Theophilus and Academic Vice President Walter H. Steffens, and the Regents' Board Room had their interiors changed.

Steffens' office and the Board room were enlarged and all the rooms finished in a black walnut panelling.

Along with the executive office remodeling work to the interior of Memorial Gymnasium and the Forestry building was included in a \$67,000 contract to H. Halvorson, Inc., of Spokane.

The men's shower rooms received new plumbing fixtures and



READY FOR FIRST CLASSES — The new \$525,000 Mines Building, one of the most modern academic buildings on the campus, will open its doors for University students Monday.

Other improvements made were tiled ceilings in the showers, and the women's locker room was enlarged.

Walnut Panelling — A walnut panelled conference room and a classroom on the second floor takes the place of a large classroom in the Forestry building. Also a women's lounge was built in the basement.

weather-seal membrane; remodeling various offices on campus; resurfacing tennis courts north of Ridenbaugh hall, masonry repairs to Engineering Kirtley Laboratory No. 1.

Utility tunnels, carrying steam, water and gas pipes and electrical service to the campus, were extended.

New Forestry Facility Added During Summer

The University of Idaho and the U. S. Forest Service are cooperating to establish an important new research facility on the university campus.

The new laboratory will be built by the Forest Service on land donated by the university. Funds totaling \$285,000 were available July 1 for the first of three stages of construction. The facilities for the research center program, when fully developed, will provide office and laboratory facilities for 36 Forest Service scientists and an equal number of research assistants and clerks. The building will include laboratories for pathology, biochemistry, physiology, genetics, and soils studies plus offices for research scientists studying forest disease and insects, forest management and watershed management.

Director Dr. Reed W. Bailey emphasized that location of the laboratory on campus land provided by the University of Idaho would help in coordinating the Forest Service research and that of the University of Idaho, and would assume continuing maximum value for each dollar allotted for research. President Theophilus pointed out that regents of the University of Idaho are keenly aware of the importance of forestry to the university and the state. He said that the opportunity for university graduate students to observe and participate in the Forest Service research projects would be of particular benefit in the doctoral program.

CALENDERS HERE

A new compact campus calendar is being given to students in the registration lines. Besides listing the various events taking place during the semester the calendar lists the phone numbers of the living groups on the campus along with the important campus business members.

Money To Be Reserved For Further Medical School Study

Studies and reports on the feasibility of the establishment of a two-year medical school in Idaho are still being made according to University of Idaho Academic Vice President H. Walter Steffens and it will take a long time to complete the "long drawn out process" he said.

Both the University of Idaho and its sister institution, Idaho State College at Pocatello are being considered as possible medical school sites if such an institution is to be established in the Gem state.

After more than three years of extensive research by University personnel and tours of both campuses by noted men in the field of medicine it has been recommended that the University set aside a

sum of money to be used in more studies by medical experts. This plan was presented to the school in May, 1961, when six people of medicine visited the campus.

Among those making the recommendation for experts to survey the school possibilities were Dr. Glen A. Leymaster, associate secretary of the Council on Medical Education and Hospitals, of Chicago and Dr. J. Perry Tollman, dean of the University of Nebraska College of Medicine at Omaha.

Idaho medical personnel also making the recommendation were Dr. Terhune, Burley; Dr. Worden, Lewiston; Dr. Simson, Pocatello and Armand Bird, executive secretary of the Idaho Medical Association at Boise.



BREAKING THE GROUND — University of Idaho President D. R. Theophilus and Jim Mullen, student body president, turn over the first shovel of dirt in preparation for construction of the new addition to the Student Union Building. Contractors are expected to start work on the structure within a few days, pending the approval of the Federal Housing Authority.

Idaho Students Plan Debate

A group of University of Idaho students have challenged their counterparts at the University of Moscow, Russia, to a debate, and the U.S. State Department feels the result may be better understanding between youth of the two countries.

The challenge was made in a letter written by Tom Lynch, Chrisman, and Linda Kinney, Hays, to the rector at the University of Moscow. The topic of the debate is "Resolved, that the two-party political system is superior to the one-party political system."

ASUI President James Mullen, off campus, signed the offer to debate Russian students, using taped talks by participants mailed between the two schools. The debate would be "non decision" as is customary.

"Idaho students are very proud of their democratic way of life," Lynch said. "We feel the Russian students are honestly just as proud of their own system. By these debates, that is if the Russians accept the challenge, we are certain to reap the benefit of better understanding between the U.S. and the U.S.S.R."

In the challenge letter, the students quoted from the text of the agreement between the two countries for cooperation in exchanges in the scientific, technical, educational and cultural fields. They wrote that Idaho students had an idea "which will contribute significantly to the betterment of relations between the two countries, thereby contributing to a lessening of international tension."

The idea for the debate came last spring as a carload of Idaho debaters were returning to the campus from a Portland tournament. Lynch suggested the idea, and aided by Miss Kinney, he asked University officials what they thought about it. They suggested the students get State Department sanction.

Astrophysicists believe exploration of the moon will unlock many of the mysteries of the solar system.

Byers Authors Graphics Book

A new approach to visualization has been written by two University of Idaho faculty members under the title of "Geometry of Engineering Graphics."

Authored by Roland O. Byers, associate professor and chairman of the department of freshman engineering, and Robert L. Turner, assistant professor of engineering, the 197 page book has just been published by Wm. C. Brown Co., Dubuque, Iowa.

"Visualization has been one of the stumbling blocks for many who have given up engineering for other fields of endeavor," said Byers. "We have experimented with systems set forth in many geometry texts and have found all to be workable, but lacking the link between the student and his ability to visualize."

"The major difference between the many current texts in descriptive geometry is the method of presentation. We have combined in this text a problem solving technique with a new approach to visualization. The combination should aid the student in solving problem situations."

WIN FREE Lube or Wash
DRAWING-DAILY
Jack's Mobil
— Next To Shakey's



STUDENTS WELCOME
First Methodist Church
Two services: 9:30 and 11:00 a.m.
"A GOOD WAY TO BEGIN"

Sermon Subject — Rev. R. A. Anderson
Reception for all students 10:30 to 11:00
Norman Logan, Choir Director
UNIVERSITY SUNDAY — Attend the church of your choice
FIRST METHODIST CHURCH
Moscow, Idaho — 3rd & Adams
Phone TU 2-5901 or TU 3-9591

PENNEY'S



ALL WEATHER TOPCOAT VALUE
Bal Raglan, mod. Colorful lining! Rich cotton gabardines. Tailored, has raglan sleeves. Machine wash.
Sizes—regular, long.
12.95

MISSES FASHION RAINWEAR, TOO!

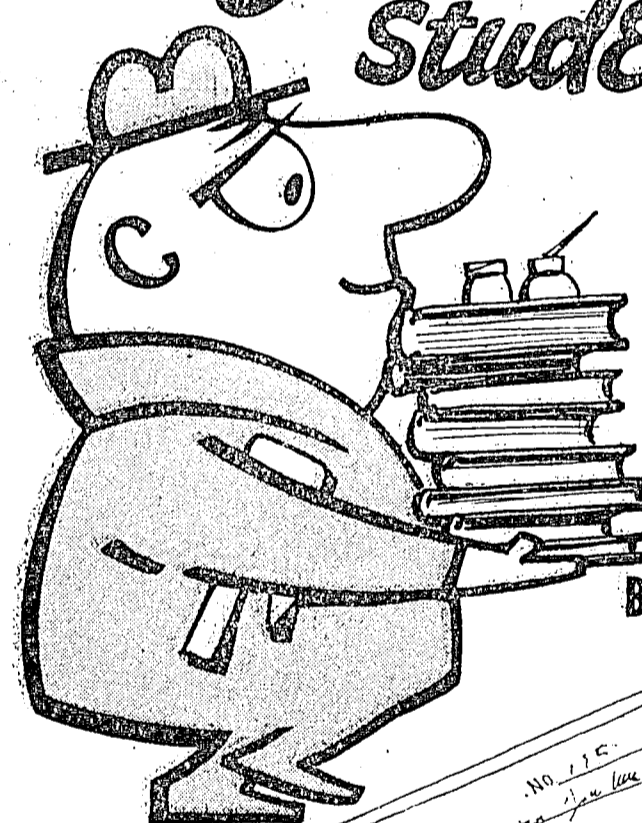
Combined Cotton Poplin Balmaccan.
10.95
Sizes 8 to 20 in Beige or Willow. Campus favorite! Washable, too.



NEW LOOK PENTO-TWIST Cotton Slacks
Extra heavy for extra wear. Tailored with plain front, tapered legs. Contrasting jute belt with cloth belt. Wash & wear. All colors.
Sizes 28 to 42.
4.98

Use Your Penney Charge Card

College Students!



DON'T FORGET THE MOST IMPORTANT BOOK OF ALL

Your **ONB** ThriftiChecks*

They're campus favorites when it comes to keeping track of college costs. Give you a record of what's spent and what's left.

BEST OF ALL . . . no minimum balance required . . . no monthly service charge . . . no charge on deposits. Book of 25 costs only \$2.50.

THEY'RE PERSONALIZED!
with your name and Vandal emblem printed FREE on each check.

OLD NATIONAL ONB Everybody's Bank
26 EASTERN WASHINGTON OFFICES

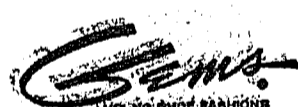
Member Federal Deposit Insurance Corporation and Federal Reserve System

LARRY'S SHOES

WHERE YOU CAN BE SURE OF QUALITY AND FIT

NEWEST SHOE STORE IN THE PALOUSE EMPIRE

FOR WOMEN!



LATEST STYLES IN ALL SIZES AND WIDTHS
NATIONALLY ADVERTISED ON DICK CLARK SHOW

- Latest Styles & Colors—All Sizes & Widths
- DRESS FLATS 3.99 & up
- JET MID & HIGH HEELS 7.99 & up
- SATIN TINTABLE HEEL 9.99 & up

—We Tint Free—

We feature B. F. Goodrich **TENNY RUNNERS** 2.99 & up

WE ALSO CARRY A COMPLETE LINE OF Hosiery — Bows — Hand Bags — Polish

FOR MEN



- SLIPON — Black & midnight brown . . . 9.99 & up
- OXFORDS — Black and brown 7.99 & up
and Midnite Brown
- EXCHANGE SHOES 8.99
Soft Elk Upper and Cushioned Insole
- LOW-CUT TENNYS 4.99 & up
Sizes 6 1/2—14
- WORK & HUNTING BOOTS 13.99 & up

"Open Friday Until 9"

Rebuilt Walk For 'Safe' Hello

Proving that a safety hazard can be eliminated and a horticulture research "laboratory" and beauty spot added at the same time is the new "Hello Walk" entry at the University of Idaho, which will greet students returning to the campus this fall.

"Hello Walk" is a pathway bisecting the lawn in front of the Administration building where by tradition each student met is greeted. Students have used the same route since the university first opened its doors in 1892.

Gone will be the old flight of steep stairs. In its place will be several levels of risers which wind past native rock planters, along an organic garden, by several redwood benches and on to the Administration building.

Design by Stoll
The over-all design of the project was made by Charles Stoll, a senior architecture student from Williamsport, Pa., while working part-time at the university's physical plant division.

The revision grew out of the necessity for a safer student pedestrian crossing and the need for better control of traffic near the terminal area. Blake Street was to be widened which meant the old stairs of the walk would have to go. In its place will be the new entry.

Working out the new look were members of the buildings and grounds staff and William Snyder, assistant professor of horticulture. Stoll was asked to do the design as part of his buildings and grounds job and "give it something that means something." He was equal

DR. J. HUGH BURGESS
Optometrist
Contact Lens Specialist
Quick, Accurate Refractions
in our Laboratory
O'Connor Bldg. Ph. 2-1344

to the task and his design accepted. "Organic Design" explained the 30-year-old student. "There is something growing and blooming throughout the year from among the 70 different plant varieties used. We attempted to simulate the outcroppings familiar to this area and provide a landscape for day and night."

The walkway, which was made safer by a grade reduction at the end, will have special lighting to highlight the area after dusk. Plant scientists and students will be able to use the area for the study of species not native to the Northwest.

Hours At Library Are Unchanged

Library hours for the coming year beginning Monday will be the same as last year, announced Lee Zimmerman, University Librarian.

They are 8 a.m. to 5:30 p.m. and 7 p.m. to 10 p.m. Monday through Thursday; 8 a.m. to 5:30 p.m. Fridays; 8 a.m. to 5 p.m. Saturdays; and 2:30 to 10 p.m. Sunday.

Some 4,000,000 Americans visited Canada during 1960, while 700,000 went south of the border, to Mexico.



AT HOME IN NEW HOUSE—Three Alpha Chi Omega girls are already at home in their new Alpha Chi Omega house on Nez Perce Drive. From left to right, looking at the 1961 yearbook in their gracious living room, are Bridget Beglan, Sharon McQuade and Peggy Clark.

Alpha Chi Omega Occupies New \$170,000 Residence

Omega sorority house gives Sigma Chi fraternity a neighbor and marks another step in the expansion of the new "Greek Row." The Sigma moved to Nez Perce drive in 1959.

The newly built sorority house, built during the summer, houses 60 girls. The two-story brick structure was designed by Gale Martell, Norrie, and Davis, Coeur d'Alene architects.

Alpha Chi Omega formerly lived at the corner of Elm and Seventh. Theta Chi fraternity now lives in the old Alpha Chi house.

The new sorority dwelling is of traditional design with exterior features of pink Roman brick, cedar siding and black ornamental iron work trim.

The struggle for a new sorority house began eight years ago. Three dropped temporarily because of a lack of funds.

Coeds Take Over McConnell; New Men's Dormitory Planned

New Dormitory To House 1,000 Students

Crowded living conditions coupled with an anticipated student boom the next eight years compelled University of Idaho officials to plan a new dormitory to house 100 students when completed.

Until the new housing project can be completed living quarters on campus for both men and women are cramped.

Women students filed into McConnell Hall, a 121-person dorm in the heart of men's housing, helping to ease the housing shortage.

Willis Sweet and Chrisman Halls received new electrical wiring which improved their living conditions.

Building and remodeling of fraternity row also helped stall the housing shortage. The Alpha Chi Omega sorority made room for 60 girls. Theta Chi fraternity moved in to the old Alpha Chi house at Seventh and Elm.

Remodelling was Alpha Tau Omega. The major project at the Tau house was installing new plumbing fixtures. However, a plumbing strike kept the project from being completed before school starts.

The growing need for living quarters, while slowed, is not stalemated.

"We have reached the place," President Theophilus said. "The Board of Education last summer, 'where we can house no more students than we have now.' It looks as though every cobblyhole will be filled this fall."

Theophilus said that the first unit of the new dorm—for 200 men—should be ready by the fall of 1963.

Kenneth A. Dick, financial vice president of the University, said the planning must be "not for 200 students, but for up to 1,000 students by 1966."

Each of the dormitories would be of four stories. When finished the dormitories will look like spokes revolving around a center—a cafeteria.

The dorms would be designed so that 100 students would live as one unit, with a central living room and one television room. The sleeping room would be insets of two with each room built for two students.

Financing is planned through a loan from Federal Housing and Home Finance Agency.

"Our goal is to open bids on this project in the spring of 1962," Dick said. "To achieve that we need to come to a prompt decision on the preliminary plans, so that final plans and specifications can be prepared."



GIRLS TAKE OVER—McConnell Hall, once marked "boys only," becomes a girls' dorm this year due to a housing shortage for women. McConnell Hall lies in the heart of the University's male housing.

Two Class Groups To Use Closed Circuit Television

The newest wrinkle in communications on the Idaho campus is a proposed closed circuit television system to be used in communication and education classes. Preliminary plans were composed and funds allocated by the Board of Regents last summer.

The plans, reporting the possible needs, uses, and necessary equipment for closed-circuit television on campus (referred to as CCTV) were submitted by the department of communications headed by Dr. William S. Snyder.

Commenting on the TV operation, Dr. Snyder said, "Basically, we shall be doing three things: direct teaching by CCTV; offering enrichment type programs in all areas of learning, and training staff and students in the uses and techniques of closed-circuit television."

"The plans we have submitted," he added, "are preliminary and flexible in nature to accommodate future growth in staff and facilities and technical developments in this electronics medium. They are a starting point, but are not unalterable."

Various deans and department heads, conferring with staff of the department of communications, have ascertained uses for CCTV to alleviate existing educational needs.

Among the suggestions for use of TV on campus, said Dr. Snyder, is an "electronic distribution system" to bring an instructor and

material for a course of large enrollment into several classrooms. CCTV would be especially adaptable to classes requiring demonstration or observation, such as science laboratory demonstrations where the minute size of the observed object is ineffective to a group in excess of 10 students.

It is possible for a TV camera to come in for as close a look as is desired and project it to a number of classrooms.

Incidental viewing for enrichment is possible by providing material of general interest to groups in dissimilar courses.

"With CCTV, the University of Idaho can contribute to the general knowledge in the field by conducting research into such areas as those mentioned," said Dr. Snyder.

"It is our hope that the University may in the near future extend the CCTV system to cooperate with Moscow city schools in the fields of teacher education and possibly foreign languages," he added.

As a part of the master plan, there will be established a workshop for the orientation of instructors and students in the uses of this medium. As proposed, the workshop would include training in the utilization of studios and equipment and the planning and execution of individual programs or telecasts.

Training will also involve the organization of "teaching teams" of instructors, production staff,

audio-visual specialists, graphic arts personnel, and engineering personnel.

After essential equipment is provided, the radio-television studio will have available for CCTV three floor cameras—one of which will be portable—a film chain with a motion picture projector, and a motor to mix audio and video and to drive the co-axial line. Installation will begin this summer and be ready for initial use this fall.

Influenza Shot Will Protect You This Fall

A warning from the U. S. Public Health Service that influenza of B and Asian types were expected to be prevalent this fall was announced today by Dr. J. M. Fleming, director of the Student Hospital.

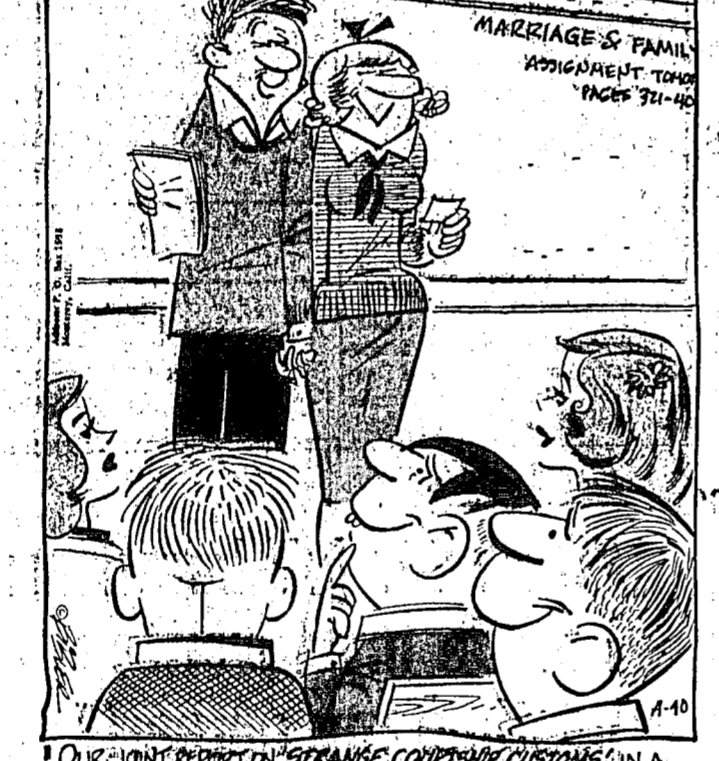
"Students may come to the Student Hospital and receive the shot which protects against A, B, and Asian flu," said Dr. Fleming.

"For protection throughout the school year, one shot should be given now and another in the spring," he added.

Students are charged only for the cost of the shot.

The Butterfield Route ran from St. Louis along a southern course to California.

LITTLE MAN ON CAMPUS



OUR JOINT REPORT ON STRANGE COURTSHIP CUSTOMS IN A MOMENT—BUT FIRST, MISS SMITH HAS AN ANNOUNCEMENT...

LET THE CLASSIFIEDS DO IT!

Fahrenwald Chevrolet

INVITES YOU TO ATTEND THE

Grand Showing

FRIDAY, SEPTEMBER 22

Announcing

The All New 1961 OLDSMOBILE and the exciting new F-85 CUTLASS

Here's the exciting, fun-to-drive Cutlass Convertible, newest member of Oldsmobile line of nine F-85 models for 1962. Standard on the Cutlass Convertible are comfort-contoured bucket front seats and the Cutlass 185 ultra high compression aluminum engine, which provides exceptional performance and outstanding operating economy.

FAHRENWALD CHEVROLET, 624 South Main

FRESHMAN

to train for leadership of the Class of 1965

How to do it: look right from your very first day on campus. How to look right: Leave it all to our Cricketeer College Collection. We have the Cricketeer suits and sportcoats with shoulders all your own, trousers narrower, coats a little shorter. We have the bests you need to be really dressed. We have the right outercoats... the shirts the ties, the socks, all right to the last detail. Your best course of action to accomplish your college aim: see us before you matriculate. Cricketeer suits, \$55 to \$69.50. Cricketeer Sportcoats, \$29.50 to \$45.

Another in our Cricketeer series directed to the YOUNG MAN WHO WANTS TO MAKE \$10,000 A YEAR BEFORE HE'S 30.

CREIGHTONS

Welcome Students:

Bring all your cleaning problems to us for the finest service and care.

Spic-N-Span Cleaners

Moscow Steam Laundry

Phone TU 2-1147 623 S. Main

ARCHIE SAYS:

My cousin Archie—he thought the electric razor his gal gave him last Christmas was o.k. Then he tried Old Spice Pro-Electric, the before shave lotion. Now he'll never stop talking, he thinks electric shaving is so great.

ARCHIE SAYS Pro-Electric improves electric shaving even more than lather improves blade shaving. ARCHIE SAYS Pro-Electric sets up your beard by drying perspiration and whisker oils so you shave blade-close without irritation. ARCHIE SAYS Pro-Electric gives you the closest, cleanest, fastest shave.

If Archie ever stops talking, I'll tell him I use Old Spice Pro-Electric myself.

P.S. There's a .60 size but Archie gets the 1.00 bottle. (He always was a sport).

SHULTON

New Department Heads, Instructors Named For 1961-62 School Term

New University of Idaho faculty and staff appointments receiving formal Board of Regents approval at its Boise meeting early in September were announced today by President D. R. Theophilus.

A new administrator for the University's Adult Education Center in Boise, Lonnie Lee Woods, was announced. Woods will replace James Defenbach who is returning to the campus to teach accounting.

Paul Kaus, assistant professor of education extension, will serve as acting director of adult education replacing Thomas Dahle, who has joined the faculty of the University of Wisconsin.

A former Fulbright exchange teacher for France, Dr. Laurence W. Cor, will join the Idaho faculty from the University of Wyoming as an associate professor of languages.

Also joining the languages faculty as a visiting professor of languages is Catherine Crates Gilbert, professor emerita from Colorado State College. She holds degrees from Ohio Wesleyan and Ohio State University.

George L. Bloomsburg, assistant hydraulic engineer at the Albrook hydraulic laboratory at Washington State University, will become an assistant research professor. A notice of Salmol, Bloomsburg received a B.S. with high honors from Idaho in 1957 and a master's degree the following year.

Day From Florida

Coming to Idaho from the University of Florida to become an assistant professor of geography is Dr. Richard L. Day. He received bachelor's and master's degrees from Clark University and a doctorate from the University of Illinois.

Jack H. Lunsford, who has done work at MIT, Texas A and M and Rice University, will be an assistant professor of chemical engineering.

Gordon D. Morrison will become an assistant professor of civil engineering. He received a B.A. from the University of Alberta and a M.S. from the University of Illinois.

Dr. Russell Withers will be an assistant agricultural economist and assistant professor of agricultural economics.

Among the instructors named were John E. Aspholm, Navy ROTC; Monika Vera Aumann, mathematics, native of Frankfurt-Main with a B.S. from the University of Munich and a M.S. from Idaho; Everett M. Bailly, electrical engineering, member of technical staff of Bell Telephone Co., native of Twin Falls and an Idaho graduate in electrical engineering; Jerome Bernstein, history, B.A. and B.S. degrees from Utah State University; Billy B. Chapman, NAVAL ROTC; James E. Hemphill, mechanical engineering, assistant engineer at Allison-Chalmers Manufacturing company

and an Idaho graduate; Neal G. Hicks, mechanical engineering B.S. from Texas Tech and M.S. from the University of Arizona; Clarence D. Sloat, English, B.A. and M.A. from Idaho State College; Charles W. Walton, music, bachelor's and master's degrees from the University of Michigan.

Other appointments include George A. Anderson, acting University auditor from accounting division of Pacific Telephone and in Idaho graduate; Donald Barnes, visiting instructor in history, B.A. from the University of Maine and M.A. from the University of Connecticut; Freida Dunlap, home demonstration agent, Power Company, from the BYU testing service; Dr. Syed Alamdar Husain, visiting assistant professor of mathematics, assistant professor at Seattle University with degrees from Muhim, Dacca, Chicago and Purdue Universities; Raymond A. Long, assistant seed analyst, from Iowa State University laboratory; Stanley Shepard, assistant librarian for technical services, from the library at Colgate University with degrees from Rutgers and Columbia; Floyd W. Sprakles, acting instructor in mathematics, research metallurgist with Bunker Hill company, Kellogg and National Defense fellow at Idaho.

Hermens Promoted

Richard E. Hermens was promoted from the rank of instructor in chemistry half time to instructor in chemistry.

Dr. James R. Baker, an assistant professor of English at San Diego State College with a B.A., M.A. and Ph.D. from Denver University, will return to the University of Idaho as an associate professor of English. Dr. Baker taught at Idaho from 1954 to 1956.

Dr. Charles E. Mounts, who holds A.B. and M.A. degrees from the University of Florida and a doctorate from Duke University, will be an associate professor of English. He comes to Idaho from Jacksonville State College, Alabama, where he was a visiting associate professor of English.

Dr. Louis B. Hall, who holds degrees from Pennsylvania State University of Nevada and the University of Oregon, and who has done advanced study at Oxford University in England, will join the faculty as an assistant professor of English.

Dr. Douglas J. Henderson, a Corning Glass fellow at the University of Utah, will become an assistant professor of physics. Dr. Henderson holds degrees from the University of British Columbia and the University of Utah.

New Asst. Prof.

New assistant professor of languages is Dr. Carlton L. Iiams, who will come to Idaho from Oberlin College where he was an assistant professor of German. Dr. Iiams received B.A., M.A. and Ph.D. degrees from the University

of California.

A former plant pathologist joined the University of Idaho, Lucier Laferriere, will return to Idaho as an assistant plant pathologist after doing course work leading to a Ph.D. at the University of Wisconsin. Laferriere holds a B.S. from the University of Miami and a M.S. from the University of Idaho.

Gordon Law, former operations manager of KWSC radio at Washington State University will join the Idaho faculty as an assistant professor of radio-television. A doctoral candidate at WSU, Law received an M.S. from Syracuse University and a B.S. at Denver University.

Glen A. Mumey, a research fellow at the University of Minnesota who has written a number of business articles, will become an assistant professor of economics and management. Mumey holds a B.S. and M.A. degree in economics from the University of North Dakota, ranking first in his class.

Dr. Robert A. Peters, assistant professor of English at Trenton (N.J.) State College, will serve in the same capacity at the University of Idaho. With a B.A. from Ohio State, M.A. from Western Reserve, and a Ph.D. from the University of Pennsylvania.

New Instructors

New instructors include Françoise M. O. Beamish, languages, a native of France who has studied at Strasbourg, France, and Purdue University; Walter K. Bunge, journalism, who holds degrees from the University of Wisconsin and has won the Reader's Digest Reporting award for 1960 and numerous press and short story awards, and has worked as news editor of the Elkhorn (Wis.), Independent, Ernest E. Etlich, speech, who taught at the University of Oregon and is a Ph.D. candidate with degrees from Oregon and Los Angeles State Colleges; Wilma Brun Merlan, languages, who has worked as an analyst on Germany and Central Europe for the New York Branch of Military Intelligence and who holds an A.B. from Colorado State, M.A. from the University of Colorado and is a Ph.D. candidate at Columbia University; Delvin D. Roberts, accounting, an Idaho graduate with honors who has worked with a national firm of certified public accountants, and Dorothy Ann Seivers, languages, with B.A. and M.A. degrees from the University of Washington and teaching experience in German and Spanish.

PHI KAPPA TAU — Andrew LeRoy Ganow, Bob Denney, Terry P. Smith and Stephen Richard Haasch, Boise; Jerome P. Nyre, Coeur d'Alene; Don G. Fluharty, Eagle; Joe Robinson, Fruitland; Jim Norell, McCall; Abden V. Davis, John Mike Knudsen, Gary D. Robb, Lester LeRoy Russell, Gary Harold Willis and Daryl Sallaz,

HERE'S MORE ABOUT— Men's Rushees

Gene Prescott, both of Jerome; Gordon Judd, Meridian; Greg Schade, Tom Harris and Bruce Skinner, Nampa; Robert Wheeler, Rupert; Larry Eng, Sandpoint; Mike Wiley, Twin Falls; Gary Honeychurch and Rick Fancher, Spokane, and Bruce Harper, Sidney, Mont.

FARM HOUSE — Donald Collins, Boise; Richard Hines, Burley; David Eugene Walters, Aberdeen; George Hamilton, Gale Lim and Gordon Allen Shoemaker, Blackfoot; Gary Ray Ott, Kellogg; Larry Daniels, Weiser; Robert Walter Owens, Kuna, and Laurent Taylor, El Paso, Texas.

KAPPA SIGMA — Bob Wise, Hank Geller, Neil M. Williams, Jack L. Ryan, Stephen F. Meyer, Gerald E. Heimbuch and Derry Hellett, Boise; Randy Benson, Buhl; LeRoy R. Brown, Caldwell; Thomas W. Dolman, Larry Fitch, Randy Hansen and Larry V. Hook, Idaho Falls; Tony Humbach and Charles Marshall, Jerome; George B. Bell, John Richardson and John P. Engels, Moscow; Richard D. Koch, Hammett; David Serwright and John Greif, Payette; Erwin H. Hinning, Rupert; Ernie Miesen, Quincy, Wash.; Rod Finkle, Spokane, Wash.; Jim Darden, Rockford, Ill.; John K. Nelson, Batavia, Ill.; Gilbert P. Moreno, La Puente, Calif., and Scott Olson, Ogden, Utah.

LAMBDA CHI ALPHA — Mike Ray Martin and Richard G. Smith, Boise; Robert Wait and Larry Herzinger, Buhl; Ralph O'Donnell, Coeur d'Alene; Terry Dahmen, Moscow; Todd D. Shelton, Lewisville; Andy Carothers, Sagle; Tom Payton, Jerome; Pat Gaffney and Bill English, Wallace; Gary K. Vallieres, James R. Thompson and Larry A. Berg, Sandpoint; Frank Ireton, Jr., Mountain Home, Rick Wilhite, Twin Falls; Dick Mace, Coconino; Brian P. Sack, Cotton, Portage, Wis.; John Derne, Stockton, Calif.

PHI DELTA THETA — Bill Martin, Joe Blackwell, Don Bell and Tony Yoelim, Boise; Melvin Cook, Caldwell; John Scott, Lewiston; Richard J. Flood, Larry G. Wright and Barry K. Harding, Idaho Falls; Richard Howard and Douglas Cundick, Pocatello; Denny Mix, Pinehurst; Dave Brown and Doran Parkins, Marsing; Bill Reese, Larry Nye and Bob Running, Twin Falls; Ron Kessel and Jim Dinsmore, Spokane; Randy Bararach, Olympia, Wash.; George Johnson, Hood River, Oregon; Bruce Compton, Whittier, Calif.; Carl West, Barrington, Ill., and John Deckebach, Cincinnati, Ohio.

PHI KAPPA TAU — Andrew LeRoy Ganow, Bob Denney, Terry P. Smith and Stephen Richard Haasch, Boise; Jerome P. Nyre, Coeur d'Alene; Don G. Fluharty, Eagle; Joe Robinson, Fruitland; Jim Norell, McCall; Abden V. Davis, John Mike Knudsen, Gary D. Robb, Lester LeRoy Russell, Gary Harold Willis and Daryl Sallaz,

PHI DELTA THETA — Bill Martin, Joe Blackwell, Don Bell and Tony Yoelim, Boise; Melvin Cook, Caldwell; John Scott, Lewiston; Richard J. Flood, Larry G. Wright and Barry K. Harding, Idaho Falls; Richard Howard and Douglas Cundick, Pocatello; Denny Mix, Pinehurst; Dave Brown and Doran Parkins, Marsing; Bill Reese, Larry Nye and Bob Running, Twin Falls; Ron Kessel and Jim Dinsmore, Spokane; Randy Bararach, Olympia, Wash.; George Johnson, Hood River, Oregon; Bruce Compton, Whittier, Calif.; Carl West, Barrington, Ill., and John Deckebach, Cincinnati, Ohio.

PHI KAPPA TAU — Andrew LeRoy Ganow, Bob Denney, Terry P. Smith and Stephen Richard Haasch, Boise; Jerome P. Nyre, Coeur d'Alene; Don G. Fluharty, Eagle; Joe Robinson, Fruitland; Jim Norell, McCall; Abden V. Davis, John Mike Knudsen, Gary D. Robb, Lester LeRoy Russell, Gary Harold Willis and Daryl Sallaz,

Dewey Newman Is New Men's Residence Halls Counselor

A new program, providing added attention to both physical and social aspects of dormitory living at the University of Idaho, was announced today by President D. R. Theophilus.

"The University of Idaho is a residential institution, and dormitory living is an important part of the educational process," said Theophilus. "Under the new arrangement, the director of dormitories will be able to give more time to the management of all physical aspects of the residence halls, including the foods program. The dean of students will have the responsibility for the counseling program for students living in the halls. He will be in charge of staffing, training, supervising and coordinating the staff personnel living in the halls as advisors and counselors."

PHI GAMMA DELTA — Pledged 20, but traditionally do not reveal names of pledges.

HERE'S MORE ABOUT— Women Pledge

Robert F. Greene, director of dormitories, who helped pioneer the university's modern dormitory system, under which buildings are financed by revenue, will oversee the physical aspects of the program. Charles O. Decker, dean of students, will be in charge of the social aspects, giving special emphasis to the development of group programs in the halls.

New Counselor

A new head counselor for men's residence halls has been appointed. He is Dewey L. Newman, graduate of the University of Idaho and former member of the Associated Students Executive Board. He first came to the University from Whitehaven, Tenn., under the Naval ROTC program. Graduating in 1956, he served as a Marine Corps officer for three years, then became head resident of a dormitory at Washington State University for two years while working on his master's degree.

Newman's office is in Room 113 at Willis Sweet Hall.

Mrs. Marjorie Neeley, dean of women, will serve in a similar capacity for the women's residence halls.

Wash.; Carol Earp and Janie Modie, both of Lewiston; Mary Gladhart, Vera Dale, Wash.; Judy Hutchison and Sally Kimball, both of Spokane; Janet Josephson, Pinedale; Linda Maguire and Vicki Wilson, both of Pocatello; Susan Nelson, Coeur d'Alene; Heather Sanders, Emmett; Judy Sharp, Twin Falls, and Janice Wendler, Newman Lake, Wash.

KAPPA ALPHA THETA — Sharon Barnes, West Covina, Calif.; Rose Marie Bicandi, Julie Johns, Nancy Rice and Judith Weaver, all of Boise; Lucinda Brush, Coeur d'Alene; Jinx Butler, Kimberly; Patti Folz, Kellogg; Lynda Hartman, Buhl; Sheryl Henderson, Burley; Lynn Holmes, Pullman, Wash.; Louise Locke, Gooding; Darlene McDonald, Star; JoAnne Myers, Grangeville; Karen Phillips, Olympia, Wash.; Garey Jo Robertson, Ephrata, Wash.; Sharon Rutherford, Nampa; Sue Solomon, Sandpoint; Diane Sowder, Sandy Spring, Md.; Penny Sewell, Menlo Park, Calif., and Penny White, Spokane.

KAPPA KAPPA GAMMA — Emily Barnesburger, Jerome; Sarah Jane Beer and Judy Ann Frazier, both of Twin Falls; Patricia Brim, Kimberly; Marsha Friederich and Sue Rasmuson, both of Burley; Joan Frost, Orofino; Alice Fulcher, Meridian; Julie Ann Harper, Caldwell; Kay Hoge and Anne Miller, Pocatello; Kathie Hosteler, Nampa; Ann McKenney, Sandpoint; Cherry Pickett, Sandra Rutledge, Linda Strawn and Marjorie Stunz, all of Boise; Florence Sleeman, Alberta, Canada; Joan Sorenson, San Jose, Calif.; Mary Tate, The Dalles, Ore.; Barbara Ware, Lewiston, and Ann Yenni, Southwick.

WARDS PAINT & HARDWARE

All Sporting Goods
Guns - Basketballs
Tennis Equipment
Golf

WELCOME VANDALS

COME IN TO TRY OUR
RANCH BURGER
A Meal in Itself!
HOME MADE CHILI
Made like Mom's Chili!

Watch this space each week for the name of winners of a **FREE RANCHBURGER AND SHAKE!**

RANCH CAFE
Open 24 Hours a Day - 7 Days a Week
Across from Safeway

PHI BETA PHI — Beverly Ann Archart, Coeur d'Alene; Diane Burningham, Joan Rumpeltes and Marcia Studebaker, all of Boise; Joyce Ann Collins, Nampa; Nikki Dahmen, Patricia Findley and Lois Tobiska, all of Moscow; Lysbeth Fouts, Richland, Wash.; Mary Ann Smith, Twin Falls; Rita Smith, Fruitland; Alberta Standerfer, Hermiston, Ore.; Judy Tanck, Odessa, Wash.; Janet Weber, Ritzville, Wash.; Kathy Day, Gooding, and Linda Elliott, Burley.

Used Book Sale In Student Union

The semi-annual Intercollegiate Knights book sale, which started yesterday in the SUB lobby, will offer students a chance to buy and sell used text books until Thursday.

Hours are 9 a.m. to 5 p.m. every day but Sunday. Co-chairmen are Jeff Tollefson, Phi Tau, and Dinnen Cleary, Phi Delta.

Career Cues

"Cure for job boredom: I made my favorite pastime my career!"

Richard Bertram, President Bertram Yacht Co., Division of Nauteq Corp.

"When you stop to think what percent of our total waking hours is spent bread-winning, you realize how tragic it is for any man to work at an occupation he doesn't enjoy. Besides frittering away life, it reduces chances of success to just about zero. I know... because it almost happened to me!

After college, I did what I thought was expected of me and joined a solid, Manhattan-based insurance firm. I soon found office routine wasn't for me. I lived only for

lunch hour when I could walk to the Battery and mentally sail with the ships that stood out in the Narrows... and for the summer weekends when I could go sailing. Fortunately, the company I worked for is one of the leading insurers of yachts and after two years I was transferred to their Yacht Underwriting Department. Enjoyment and interest in my work improved immediately 100%.

After World War II, I started my own yacht brokerage firm and yacht insurance agency in Miami, combining my marine insurance background with an even closer relationship with boats.

My only problem ever since has been a feeling of guilt that my work was too easy. I love boats and boating people. That affection has paid me rewards way beyond the financial security it has also provided.

The moral's obvious. You have an odds-on chance for success and happiness working at what you enjoy most — what comes naturally! And if it's not just frivolous, your life's work could well be what you now consider just a pastime. It's certainly worth thinking about, anyway!"

Richard Bertram, while still in his early thirties, became one of the country's leading yacht brokers. Today he heads up eight companies covering yacht manufacturing, insurance, repair, storage, finance and brokerage. A resident of Coconut Grove, Florida, Dick became a Camel fan while still in college.

And to make any time pass more enjoyably...
Have a real cigarette-Camel
THE BEST TOBACCO MAKES THE BEST SMOKE.

Ulysses of days long gone past Had a mind that was keen and so fast! When the sirens' attraction Drove his men to distraction, He just stapled them all to the mast!

SWINGLINE STAPLER
no bigger than a pack of gum!

98¢
(including 1000 staples)

Unconditionally Guaranteed
● Made in America
● Tot 50 refills always available!
● Buy it at your stationery, variety or bookstore dealer!

Swingline INC.
Long Island City 1, New York
WORLD'S LARGEST MANUFACTURER OF STAPLERS FOR HOME AND OFFICE

Students... you'll need this book all through college!

A First Security Bank Checkway Account

The best way to pay college expenses is with a First Security Checkway account. Your checkbook stubs automatically keep track of your expenses. Your cancelled checks provide legal proof of payment. And, a checking account is the economical way to keep your personal finances in order.

COSTS JUST A DIME whenever you write a check.
YOUR NAME PRINTED FREE on all checks and deposit slips.
BANK-BY-MAIL with postage paid by us.

Come in — and open an account today!

FIRST SECURITY BANK
First Security Bank of Utah, N. A. Member Federal Deposit Insurance Corporation

Friday, Sep
Mum S
For H
With Hom
away, Mort
men's honor
nial warlin
"Don't be
tar Board"
Sharon H
man, said t
alumni may
before Hor
Each m
with silver
silver I, 1
Board mem
Miss Hou
set up in th
for Open I
be in ope
and the St
end.
Stud
Plan
With
Approxim
leaders an
faculty me
annual S
Oct. 7-8.
The weel
at Camp
dren's sum
ern end o
Accordin
Board me
ning chair
ties will b
year's.
The pur
bring stud
members
versity pr
of faculty
Invitati
issued nex
WSU
Prof. Jo
ington Sta
partment,
ism Sunda
man. Th
meeting o
arian Fel
ho studen
to the 10:
TU 3-1615
served af

Mum Sale Opens For Homecoming

With Homecoming only a week away, Mortar Board, senior women's honorary, has issued its annual warbling.

"Don't be Half Safe, Buy a Mortar Board Mum."

Sharon Houck, Mum Sale chairman, said University students and alumni may order mums any time before Homecoming.

Each mum, which is decorated with silver and gold ribbons and a silver I, is \$1.50. Any Mortar Board member can take an order.

Miss Houck said booths will be set up in the Student Union tonight for Open House. Booths will also be in operation in local hotels and the Student Union next weekend.

High School Basketball Stars Report For Freshman Team

Idaho's hopes for a stellar freshman basketball squad were boosted as 11 high school stars reported to the University under the athletic recruitment program.

Ranging from a 6 foot all-stater in Ohio to a 6'9" engineer from Oregon, the freshmen hope to improve on an average record last year for the frosh.

Some of the prospects are Charles Cutler, 5'10" from Twin Falls, Idaho, majoring in Engineering. He was named all-conference in the Southern Idaho conference. Jim Halta, a 6'4 1/2" boy from Kent, Washington who was voted the Most Outstanding Basketball player in the Washington State Tournament.

Ed Haskins, 6'3" from St. Maries, Idaho, Haskins averaged 28 points a game in his senior year. Terry Henson from Kent, Washington was named All-Conference

Charles Kozak 6'4" was graduated from Spauld High School in Seattle, Washington where he averaged over 20 rebounds a game in a three game series to set a state record. Nelson Levias from Seattle's Garfield High was named All-City in that league. He is 6'3".

Tom Moreland, 6'7" center from Coeur d'Alene, Idaho, averaged over 15 points a game. Larry Rasmussen 6'9" from Seaside High in Cannon Beach, Oregon was named All-State in the A-2 Tourney, in Oregon.

Don Sowarz, a forestry major from Coldwater, Ohio was named All-State in Ohio. Six foot six Mike Stratton from Pocatello, Idaho, also a forestry major, was named All-State in Idaho. Ed Tollefson, Portland, Oregon, was named All-City in Portland. He stands 6'5" tall.

Former End Coach, Goodell, Returns As Frosh Grid Guide

Personable, young looking Bud Goodell has returned to Idaho to become Administrative Assistant.

While there his teams took two conference championships and lost only three games in three years.

He then spent two years as Athletic Director for Rimb High School at Lake Arrowhead, California.

His duties here in addition to his coaching job will include scheduling of minor sports and recruiting athletes for Idaho.

He graduated from Whittier College in 1951 lettering in football and baseball.

Talking about this year's team he said that 50 men will turn out for practice Monday with their first game scheduled for October 21.

Assisting him in the coaching of the frosh will be Darrell Vail, line coach and Theron Nelson, backfield coach. Both are former Idaho lettermen.



Bud Goodell to Skip Stahley and frosh football coach.

Goodell was an end coach here at Idaho in 1956 before leaving to coach at Orange Coast Junior Col-

MARIS FAILS Incidentally, Roger Maris of the New York Yankees, failed to beat Babe Ruth's record of 60 home runs. Maris got 59!

INTRAMURALS START MONDAY



DELTA TAU DELTA — 1960-61 Intramural champions, the Delts loom as strong contenders for the title again this year.

The Intramural program gets rolling Monday when touch football begins in one league with the others to start later in the week. There are four leagues with Greek I and II and Independent leagues III and IV.

In a meeting held last night each house drew for a league. In League I, Delts, Tekes, Betas, SAE's, ATO's, Delta Chi's Phi Tau's, and the Kappa Sigs. In League II: Figs, Delta Sigs, Sigma Chi's, Phi Deltas, Sigma Nus, Lambda Chi's Theta Chi's, and possibly the LDS.

If LDS decides to drop out of football then the Kappa Sigs will drop into League II. Action will start at 4 p.m. Monday.

In the independent leagues each hall will have two teams with their second team comprising League IV. In League III: Campus Club, Christian Hall, Town Men's Association, Upham Hall, Willis Sweet Hall, Galt Hall, Lindley Hall, and Shoup Hall.

Will Call Monday

Clem Parberry, intramural director, said he will call each house Monday to let them know who they play and where.

The schedule for Monday is: Delts vs. Tekes on field 1, Betas vs. Kappa Sigs on field 2, SAE's vs. Phi Taus on field 3, and ATO's vs. Delta Chi on field 4, in League I.

Parberry also reminded all houses that eligibility forms for all sports must be in by Friday Sept. 29. Entries for Tennis have to be in Friday, at 10 a.m. also. Play in tennis will start as soon as all entries for the living groups are in. Each group will have a 3-man tennis team.

Elect Officers

The next intramural meeting will be the election of officers.

The new traveling championship trophy presented to the intramural program by the ASUI was awarded to the Delta Tau Delta fraternity, winners of the 1960-61 competition.

Booster Gives 2 Suggestions

Ale Anderson of Moscow is the father of Karen Anderson, Alpha Chi pledge, and he's a Vandal booster and the chairman of Kiwanis Club's Church committee.

At a Kiwanis meeting the other evening, Anderson rose for two items of business. First he reported that he had attended meetings of both the Vandal Boosters and the Cougar Boosters across the way. His comparison was ominous.

"Jim Sutherland has a couple of new backs over there that are able to rip holes through his good veterans in practice," he said. "WSU is going places this year. I'd like to have a meeting of the church committee immediately after this meeting."

Kiwanians thought it wouldn't hurt to try.

A fact that may surprise many conservationists is that ringnecked pheasants have been known to kill young rabbits.

Student Chiefs Plan Retreat With Faculty

Approximately 25-30 student leaders and an equal number of faculty members will attend the annual Student-Faculty Retreat Oct. 7-8.

The weekend retreat will be held at Camp Luthervan, a children's summer camp on the southern end of Lake Coeur d'Alene.

According to Terry Mix, Executive Board member and retreat planning chairman, the weekend activities will be much the same as last year's.

The purpose of the retreat is to bring student leaders and faculty members together to discuss University problems and the attitudes of faculty and student body.

Invitations to the retreat will be issued next week, Mix said.

WSU PROF TO SPEAK

Prof. Joseph Wigley, of the Washington State University speech department, will speak on Unitarianism Sunday at 500 Oak St. in Pullman. The occasion is the first meeting of the year of the Unitarian Fellowship group. Any Idaho students needing transportation to the 10:30 a.m. meeting can call TU 3-1615. A 50-cent lunch will be served after the speech.

HERE'S MORE ABOUT—Marriages

Grossenbach, Phi Tau; Dayle Jensen to Dave Stanger; Genevera Oester to Joel Koonce, Sigma Chi; Ellen Morgan to Bill Greenwood, Theta Chi; Ann Knowlton to Larry Curry, Sigma Chi; Jayne Scoggin to Jack Strube, Sigma Chi; Lynda Himmelsbach to Dennis Eckwartzel, Phi Delt; Bethel Solt to John Simko, Gault Hall.

PI PHI—Helen Method to Skip Newton, ISC; Charlene Peters to Tony McFarland, Theta Chi; Sandy Burn to Randy Litton, Beta.

FORNEY—Orinda Hamon to Lifer Spence, Campus Club.

HAYS—Shirley Krohn to Bob Laidle, off campus; Betty Hutchinson to Jim Raymer, off campus; Karen

Loud, Clear Voice Of KUOI To Be Received By Year's End

The voice of the University student radio station, KUOI, will come in loud and clear in all living groups before the end of the 1961-62 school year, according to station officials.

Plans for installing transmitters in all campus living groups are already underway, one source said.

O'Harrow to Fran Waterman, Salmon; Nancy Porter to Mr. Wormshaker, Filer; Nancy Rambeau to Joe Amell, Orofino.

ESH—Doris Foukal to Phil Edwards; Verla Barney to Dick Flores, Campus Club; Carolyn Barus to Kenny Woodruff, Buhl; Mary Whitehead to Ron Pettis, Phi Tau.

LITTLE MAN ON CAMPUS



The Paper House
Wishes To Welcome All The New And Returning Students

An invitation is extended to each of you to browse through our store and view our books, Cards, School Supplies and Variety Paper Products.

The Paper House

5000!!

RECORDS!

—Come See Our Display Of All Types Of Records—All Labels

NEW!! NEW!! NEW!!
WE HAVE ADDED A COMPLETE NEW!

COMPONENT CENTER
"ONE OF IDAHO'S LARGEST"

MOSCOW MUSIC CENTER
Complete Music Service

TISDALL'S BARBER SHOP
—ACROSS FROM THEATRES—
Welcomes back all Students to the University of Idaho

Dauids' Department Store

Repeat of our success . . .
ALL-WEATHER
Zip-Lined Poplin
RAINCOATS
TWO-COATS-IN-ONE
A \$24.95 Value . . .
19.95

Here's a classic Raincoat that you'll wear rain or shine and in the coldest weather, because with its zip-in liner of "Thoron," the quilted miracle fabric that gives you warmth without weight, you get important "extra-weather" protection. It's tailored of DuPont's "Zelan" treated water repellent cotton poplin in natural color only. Regular and large, long, sizes 34 to 46.

2 Days Only — Friday and Saturday, September 22 & 23
New Men's Shoes — Main Floor

Kenworthy
TONIGHT THRU SATURDAY
At 7 p.m. only

GREORY PECK
DANN NIVEN
ANTHONY QUINN

THE GUNS OF NAVARONE

Adults 90c Children 40c

SUNDAY—ALL NEXT WEEK
Sunday at 3-5-7-9—Mon.-Sat. 7-9

Rock Hudson—Gina Lollobrigida
Sandra Dee—Bobby Darin

Come September

NUART
TONIGHT THRU SATURDAY
At 7 and 9

Jerry Lewis "THE LADIES MAN"

SUNDAY THRU TUESDAY—7-9
7-9 p.m.

STEWART GRANGER—HAYA HARAREET
THE SECRET PARTNER

AUDIAN
PULLMAN
TONIGHT THRU SATURDAY
At 7 and 9

"THE HONEYMOON MACHINE"

SUNDAY THRU TUESDAY—7-9
"ADA"

CORDOVA
PULLMAN
TONIGHT THRU SATURDAY
At 7 and 9:30

"FANNY"

SUNDAY—ALL NEXT WEEK
"COME SEPTEMBER"

Big Sky
MOTOR MOVIE—Pullman
TONIGHT THRU SATURDAY
Dolores Hart—George Hamilton
"WHERE THE BOYS ARE"

Hitler's Rise and Ruin
"MEIN KAMPF"

SUNDAY THRU TUESDAY
Marlon Brando—Eva Marie Saint
"ON THE WATERFRONT"

Anne Francis—Lloyd Nolan
"GIRL OF THE NIGHT"

Dial TU 3-1201 for Theater Billboard

WATCH FOR L&M'S 1961-62 CAMPUS OPINION POLL!
Check your opinions against these answers from last spring's poll

Would you volunteer to man the first space station... if odds for survival were 50-50?

Are you taking full advantage of your educational opportunities?

Do you usually buy cigarettes in the soft pack or box?

Here's how 1383 students at 138 colleges voted!

Start fresh Stay fresh with L&M

Any way you look at them—L&M's taste better. Moisturized tobaccos make the difference! Yes, your taste stays fresh with L&M—they always treat you right!

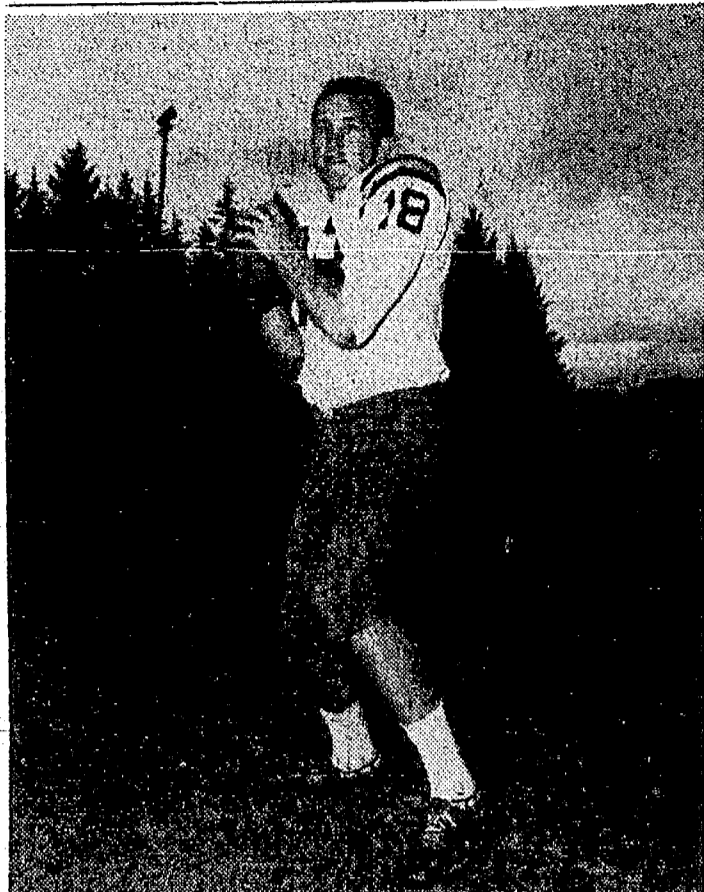
Try fresh tasting, best-tasting L&M today in pack or box!

They always treat you right!

Soft Pack	72.2%	Box	27.8%
Yes	10%	No	90%
Soft Pack	72.2%	Box	27.8%
Yes	10%	No	90%

Vandals Open Season On Ducks Tomorrow

Army Heads List Of Idaho 1961 Grid Opponents



MIKE MOSOLF — The key to Idaho's pro-type T formation, Mosolf will spearhead the attack for the Vandals in their season opener tomorrow against the University of Oregon Ducks at Eugene.

Take nationally ranked football powers Army, Utah State, Arizona, and six other teams regionally strong, and you have Idaho's football schedule for 1961. This is the Vandals' roughest schedule in recent years and could prove disastrous, according to expectations and early predictions.

Basketball Loop Still Proposed

The proposed new basketball conference which included Idaho is still being proposed, according to head basketball coach Joe Cipriano.

No further developments have occurred, and if it does form it will probably be next year, the coach said.

Douglas Will Pace Vandal '61 Harriers

A cross country team which is "considerably stronger and having much more depth," is expected by Coach Bill Sorsby this year.

Six returning lettermen are expected to bolster the team's strength. Top man is expected again to be sophomore Dick Douglas from Vancouver, B.C. Douglas brought home the Pacific Northwest and Inland Empire AAU championships last year. He also placed third in the Pacific Coast Intercollegiate Championships.

Other top men returning are Louie Olasso, Gunter Amtmann, Charlie Smith, Gary Michael, and Nick Wetter.

Men turning out for the team who did not run last year were Paul Henden, Rocky Taylor, Curt Flisher, and Dick Rankinen. Also expected to help the team will be approximately 6 incoming frosh and transfer runners.

The first meet will be Oct. 6 at WSU. Another 2 mile meet will be held at Idaho Oct. 14 on the golf course.

Olasso, a sophomore from Glenns Ferry, was seventh in the Pacific Northwest AAU as freshman. Amtmann is a junior from Calif. and a varsity 2-miler.

Smith is a junior from Potlatch and a varsity half-miler. He was injured last year but is running well now.

Michael is a senior varsity 440 and 880 runner from Laurel, Montana. Nick Wetter was the number two frosh runner last year even though hampered by injury.

Steve Harrick is the veteran among West Virginia's coaches. He has coached wrestling 23 years and baseball 14 years.

However, the Vandals have one of the most spirited squads ever coached by "Skip" Stahley and could provide more than one upset. With only a few more than 30 men the Vandals can only hope that playing four quarters of football will not be too much for the regulars and that they can stop the onslaught of substitutions by opposing squads.

Psychologically the roughest opponent will be Army because of its ranking as a national power on the East coast and its reputation. A couple of years ago the University of Utah surprised the Cadets from West Point and almost beat them with a weak, but spirited club. Idaho defeated the Redskins from Salt Lake that same year, 20-0.

Lonely End
Army uses the Lonely End type of offense but recently has not had too much success with it and ended the last season with a mediocre season 6 wins, 3 losses, and 1 tie, mediocre for Army, that is. This is the first meeting between the two teams.

Two teams which are highly ranked in the West and with the potential of becoming top-rated nationally are Utah State and the University of Arizona. Last year, the Aggies from Logan trounced the Vandals, 33-6 at Boise and hardly lost a man from that squad this year. They are rated as a co-favorite for the Skyline crown. Arizona has probably the best team at Tucson in decades. Last year the Wildcats beat the Vandals, 32-3. The only break for Idaho is that they play both Utah State and Arizona the second half of the schedule. By this time Idaho's sophomores might have learned from early game mistakes.

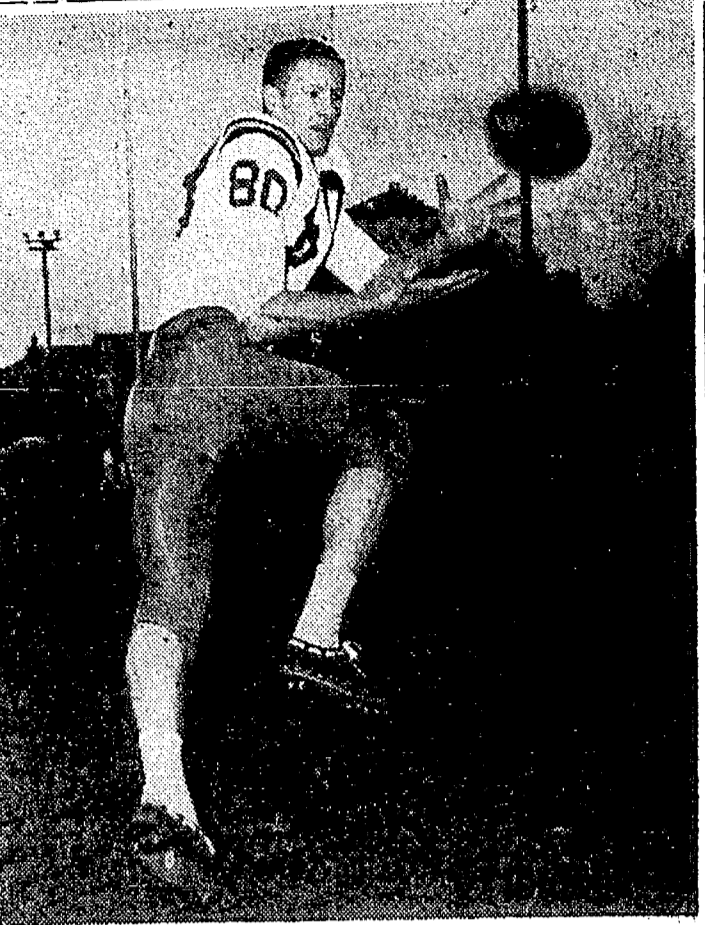
Not to be ignored is Oregon State and the University of Oregon always rough, especially on Idaho. Again the same old story, if Idaho can play four quarters of good football against the usual two or three platoons, they might prove to be two real good ballgames and may be an upset. Oregon had a 7-3-1 record last year, while Oregon State had a 6-3-1 record.

Winning Touchback
WSU, San Jose State, and the University of Pacific are all improved teams but are expected to have their problems this year. San Jose defeated Idaho last year in the closing minutes. A touchback resulted in the winning two points that broke a 20-20 deadlock and gave San Jose the win. UOP and WSU are both expected to be tough, however Pacific is not expected to look as good this year as they did in 1961 beating the Vandals 25-14. Incidentally, Idaho has never beaten the Tigers from Stockton since the two teams have played.

Washington State surely still remembers that Idaho threw a scare at them last year, and the year before held the Cougars scoreless the first half.

Idaho's only easy opponent, if there is such a thing, will be Montana State University in the annual game at Boise. The Grizzlies surprised the Vandals last year in Missoula and notched an 18-14 win but are deemphasizing football now.

Whitney Ford is the first American League left-hander to win eight games during one month. He did it in June.



REG CAROLAN — Sixth in the nation last year in pass receiving, Carolan will be out to better that record and the Vandal's 1 win 9 losses of 1960. A major part of Idaho's success depends on the passing of Mike Mosolf and the receiving of the 6'6" Carolan.

Vandals Head For Opener Of Roughest Series To Date

The 1961 Vandal football squad will be unveiled Saturday at 1:30 p.m. when the 39-man team will tangle with the University of Oregon Ducks. The Eugene game will be the season opener for both teams and the start of one of the roughest schedules in history for the Vandals.

According to Head Coach "Skip" Stahley, this is the smallest number he has coached since taking the reins in 1954. Although small in number, the squad makes up in hustle, spirit, and desire what they lack in numbers, he said.

Injuries are plaguing the Vandals as sophomore Wade Thomas, destined to be a regular halfback, will be out of action until probably the San Jose game, Sept. 30. Letterman Jim Decko, who is scheduled to start at center has just been released from the infirmary after a bout with the flu and may see only limited action.

STARTERS
The starting line-up will find an all-veteran line with the exception of left guard Don Matthews, a sophomore. Ends will be 6-6 Reg Carolan, the nation's sixth best pass receiver last year, and Bill Hill, both seniors.

Tackle position will be filled by senior letterman John Desmond, who will do the place kicking, and 1960 regular Dave Putnam, a senior. John Nilsson, senior letterman, will open at right guard.

Holding down the rough center spot is veteran Decko but if he is unable to play, Bob Ames, junior letterman and last year's regular will fill the hole.

In the backfield Mike Mosolf will quarterback the squad in the T-formation. At left half will be rugged Dick Mooney and at right half will be sophomore Bob Johnson, one of the three sophos to crack the line-up. The other sopho is former frosh sensation Tom Morris who will start at fullback.

VANDALS WILL THROW
Three sophomores and eight seniors are scheduled to start the game which last year saw the Webfoots of Oregon tromp Idaho 33-6. With a target like Carolan on the field, the Vandals are expected to throw more than often.

The Vandals have not beaten Oregon since 1950 when they dumped the Ducks, 14-0. Idaho plays a nine game schedule which includes such powers as Army, Oregon, Ore-

gon State, Utah State, and Arizona. Idaho's two home games will pit the Vandals against the University of Pacific here on Nov. 4 and the San Jose game next weekend for homecoming.

WRA Groups Plan Confab For Activities

Preliminary plans for the Northwest hockey conference to be held jointly by the University of Idaho and Washington State University Women's Recreation Associations in November are being made according to Idaho WRA president, Beverly Bucklin, Pi Phi.

Girls from about 20 northwest schools will be attending the conference which was held in Canada last year.

Field hockey and table tennis will get into full swing within the next two weeks the president said. This year all houses will elect a freshman representative along with the house representative to the WRA board.

A get-acquainted play day for the freshman girls was held last Friday to show them the WRA activities. The girls ran relays and did folk dancing.

CLASSIFIED ADS GET IT DONE!

WE
-SELL
-TRADE
-FIX
TYPEWRITERS
VAIL'S OFFICE EQUIPMENT
212 So. Main

In The
Sportlight
by Herb Hollinger

Is This A Crucial Season For Football At Idaho — Or Not?

A new year, new hopes, and the same results. This might describe Idaho's pigskin fortunes for 1961. After a disastrous record last year, the Vandals can only hope for improvement, but with not a lot to base this hope upon.

Stahley says his squad has a lot of spirit and drive, which as anyone will say you have to have if you want to win. This writer, however, feels that spirit and drive will not make a winning season for Idaho against teams like Army, Utah State, and a couple of other West Coast teams.

The athletic department has issued what is called an "Outlook" for this year's football. Literally, it says, "The University of Idaho Vandals go into one of the most crucial years in their 69 seasons of intercollegiate football. With a cutdown in football at a good many large institutions the Vandals must improve on their 1-9 marks of the past two seasons or seek a level of competition below the major leagues in which they are now playing."

However, it was said that this does not mean the Vandals will not play major college teams. What will probably happen is that Idaho will continue to schedule major college teams, but NOT nationally ranked powers. In other words, schools more our size and those with the resources similar to ours.

On a more colorful note, Idaho's frosh basketball team seems to look tall, in more ways than one. Not only do they evidently have talent but also it looks like they will be around for a while, academically. A "well done" can be given Coach Joe Cipriano and his cohorts in their recruiting program. It looks like it is paying off.

NO MATTER WHERE YOU
YOU CHANCE TO ROAM
WE'RE GLAD TO WELCOME
YOU BACK HOME
TOP TOP DRIVE IN
3rd and Jefferson Parking Is Easy

WELCOME TO IDAHO
—For Your Gem Photo
RUDY'S STUDIO
304 W. 6th TU 2-7701

SAVE MONEY
WITH THESE LOW COLLEGE RATES!
PLAYBOY (1 yr reg \$6) \$5.00
TIME (1 yr reg \$7) 3.97
LIFE (12 yrs) 7.00
NEWSWEEK (12 weeks) 3.00
LIFE (1 yr reg \$2.95) 2.00
LIFE (2 yrs) 7.00
SPORTS ILLUSTRATED (12 yrs) 7.50
Harpers Monthly (1 yr reg \$6) 3.00
Saturday Evening Post (12 mos reg \$7) 3.00
SATURDAY REVIEW (12 mos reg \$6) 3.00
NEW YORKER (12 mos reg \$7) 3.00
ATLANTIC MONTHLY (12 mos) 3.00
Archives Forum (1 yr reg \$6.50) 3.00
Civilian Post (12 mos reg \$6) 3.00
ESQUIRE (12 mos reg \$4) 2.00
Ladies Home Jour (12 mos reg \$5) 2.85
Eve. Post (12 mos reg \$4.50) 2.99
LOOK (1 yr reg \$4) 2.50
NATIONAL (1 yr reg \$5) 3.50
Good Housekeeping (12 mos reg \$6) 3.00
NATIONAL DIGEST (12 mos) 2.00
SCIENTIFIC AMERICAN (1 yr) 6.00
The Reporter (1 yr reg \$6) 3.00
The Nation (1 yr reg \$8) 6.00
Manchester Guardian (1 yr AIR) 8.00
REALITIES (1 yr reg \$15) 10.00
GRAPHIS (1 yr reg \$15) 12.50
NY TIMES (Book Review 1 yr) 6.50
AMERICAN HOME (12 mos reg \$6) 3.50
Amer Jour of Medicine (1 yr) 10.00
Amer Jour of Surgery (1 yr) 3.00
Art Direction (1 yr reg \$6) 3.00
Art News (1 yr reg \$11.50) 8.99
Art & Archt (1 yr reg \$5) 3.00
Better Homes & Gardens (1 yr) 3.00
Car & Driver (1 yr reg \$5) 3.00
Changing Times (1 yr) 3.00
Downbeat (1 yr reg \$7) 5.80
Electronic World (1 yr reg \$5) 3.00
FLYING (1 yr reg \$5) 3.00
FORTUNE (1 yr reg \$7.50) 5.50
GLAMOUR (1 yr reg \$5) 3.00
Harpers Bazar (1 yr reg \$5) 3.00
Hi-Fidelity (12 mos reg \$7) 3.75
Hi-Fi Stereo Review (1 yr reg \$5) 2.50
HOLIDAY (12 mos reg \$7) 2.75
House Beautiful (12 mos reg \$10) 6.00
HOUSE & GARDEN (1 yr reg \$6) 3.50
HOUSE & HOME (1 yr reg \$6) 4.50
Living & Young Hobbies 2.00
Modern Bride (1 yr reg \$5) 3.00
McCALL'S (1 yr) 3.00
Modern Photography (1 yr reg \$4) 3.00
Popular Boating (1 yr reg \$5) 3.00
Popular Electronics (1 yr reg \$5) 3.00
Popular Mech (12 mos reg \$8) 2.98
Popular Photography (1 yr reg \$5) 3.50
RECORD (1 yr) 3.00
ROAD & TRACK (1 yr reg \$5) 4.00
SCIENCE DIGEST (12 mos) 2.50
The Science Coming (15 issues) 4.00
Show Business III (1 yr) 7.00
SING OUT (1 yr reg \$5) 3.00
SKI MAGAZINE (12 mos reg \$5) 3.00
SKIPPING NEWS (12 mos reg \$5) 3.00
SUNSET (12 mos reg \$5) 3.00
Theatre Arts (9 mos reg \$5.65) 3.00
Town & City (12 mos reg \$5.75) 3.50
TV Guide (144 wks reg 4.00) 3.33
VOGUE (1 yr 20 issues) 3.00
WORLD NOW, publisher will bill you later
STUDENT SUBSCRIPTION SERVICE
1743 N. Kenmore, Los Angeles 27, Calif.

Enclosed \$ Send subscription to:
name.....
address.....
city..... zone..... state.....
college..... class of.....
new bill from.....

Campus Specials
ON
SCHOOL SUPPLIES
DRAWING EQUIPMENT
— SLIDE RULES —
PENS — PENCILS
COMPLETE PAPER LINE
COLLEGE OUTLINES
and
COMPLETE PAPER BACK
STUDY AIDS AND NOVELS
SELECTION
Large Greeting Card Selection
University Student Bookstore

Sports

Large Turnout For Frosh Football Expected Monday

Monday marks the start of practice for the Idaho Frosh football team. The Vandal Babes will spend the first week in sweat suits running primarily agility drills and time trials. Contact will follow after this first week.

'Arg' Positions Are Open To All

Students interested in obtaining positions on the Argonaut are urged to attend a meeting in the Argonaut offices, Wednesday at 4 p.m. Argonaut personnel will talk with interested students and explain operation.

Welcome Students
ENJOY OUR FACILITIES
At Moscow's Most Famous
Eating Place
NOBBY INN
At The Sign of The Big "I"

WARREN'S DRUG
Would like to welcome back all the students, and invite you to drop in at our new location on 2nd and Main.

WARREN'S DRUG

HOMECOMING I-MUMS
For The Game
Center Pieces, Corsages, And Other Floral Decorations For Your Homecoming Parties
— ORDER EARLY —
Moscow Florist & Gifts
112 W. 6th John W. Turk, Ph. TU 2-1155

Most of your life is spent in your shoes.
SHOE REPAIRING
Keeps them looking like new.
STEWART'S SHOE REPAIR
509½ South Main

Welcome Students!
The Gem Shop now has a New Location at 2nd and Main
We hope you all enjoyed your summer and we are ready once again to give you the finest of service.
The Gem Shop
Mel Kincaid
Phone 3-1425

VOLUME 6

THE CAMPUS sports is shown in man, and Ed

★
Week Will
Twenty-four and nine ca floats will be 1961 Homecoming will move d Street Satur Idaho m ed the Home date list down chose five fr bell, Alpha (er, Alpha P Kappa; Tom Marge Marsh when regist Alumni will

Russi Idaho
Ralph DeB in mathema sity of Ida Home, is on dents and fr in Russia th change stud

DeMarr, 1 in studies in mathematics mathematics versity. He a Ph.D. in m versity of Il

The excha the Soviet pieces of the mittee on Tu spend from calendar ye tal.

Ben's
Those of been worr fire at Be may go to tonight. Yo fact, acco the Moscow the refresh ing with n than usual

The gra a little sco hearted at about smal

McC
In past y have gen northwest women's d in the sou pus. This have pene ter of the Connell I seems to well.

Because year in wo Connell H from a m dom. Bot advantage been notc Marcy V Elizabeth