

Women's Houses Opened

Nickels And Dancers To Jive

Nickel Hop time is here, and all campus males are invited to visit each of the women's living groups with the exception of Delta Gamma, between the hours of 8 and 11:30 p.m. this evening. Fifteen minutes of dancing costs five cents.

Women's houses are reserving the right to "uninvite" men who come to the dance in an inebriated condition. "None of the girls can help but think this is a good idea. Often things can get quite unpleasant, and we'd like to avoid this," agree living group houses.

The DG house is not participating in the Nickel Hop due to the 50th Anniversary Reunion this weekend.

Idaho Spurs, who sponsor the money-raising event, will meet visiting men at the door, and collect nickels. All houses are furnishing their own entertainment and recorded music.

Publicity has been done by a Spur committee; posters have appeared in all houses advertising the function. Spurs serenaded all men's living groups Wednesday and Thursday evening to announce the dance "in person."

Discontented TKE, K-Sigs Bolt United For CUP Party

By JIM METCALF
Argonaut Political Editor
With cries of "We've been among the have-nots too long," and "United was interested only in our votes," Tau Kappa Epsilon and Kappa Sigma Fraternities bolted the ranks of United Party for Campus Union Party (CUP). The official statement was issued last week at United-CUP debate at McConnell Hall by Bob Plumb, CUP President.

seems to change parties as often as the Moscow weather (three times in the last year), have both visibly shown their discontent.

Forset Students

Ike Griner, TKE representative, said that one reason his group joined CUP was because the student body officers elected by United often forgot the students who elected them.

Kappa-Sig representative, Bill Thompson, said that after the Kappa Sigs re-entered United last spring, they received no recognition from the party powers.

United Comments

Comment by United officials was represented by President Dean Grossenbach's statement, "TKE and Kappa Sigma have been among the ranks of the have-nots because they haven't gotten out and got." I feel that these living groups have taken a negative attitude by crying, they haven't been recognized rather than getting out and working for recognition. Regardless of the number of qualified men a group may have they must get these men out and get them working to prove their qualifications to the student body."

Other political developments are in a nebulous stage as yet but may break before class elections. Three campus living groups have contacted the executive boards of the political parties to speak to them.

Tuesday night a debate was held at McConnell Hall. Wednesday night United leaders visited Ethel Steel and both groups were at ATO house last night.

Juniors Plan Campus Chest As Fall Affair

Wits and money will be matched by university living groups during the annual Campus Chest to be held October 21.

Traditionally, a spring function, this affair was added to the calendar of fall events by the ASUI Executive Board because of the overload of activities scheduled for spring.

Sponsored by the junior class and planned by representatives of the four classes, this affair is held to raise money for charity throughout the state.

Contributions to the Campus Chest are made by a living group as a whole. Money is obtained by a living group auctioning off a service, social activity, or some other desirable item to another living group.

Booths built by a combination of two male living groups and one female living group will become part of a carnival scene which will offer to the participants of the carnival all types of frolic for their enjoyment and result in more money for a good cause.

Plans for the event last night got underway as class officers and representatives from the living groups met to pick a co-chairman for the event from applications made by representatives of men's and women's groups.

Card Section D-Day Stunts Are Intricate

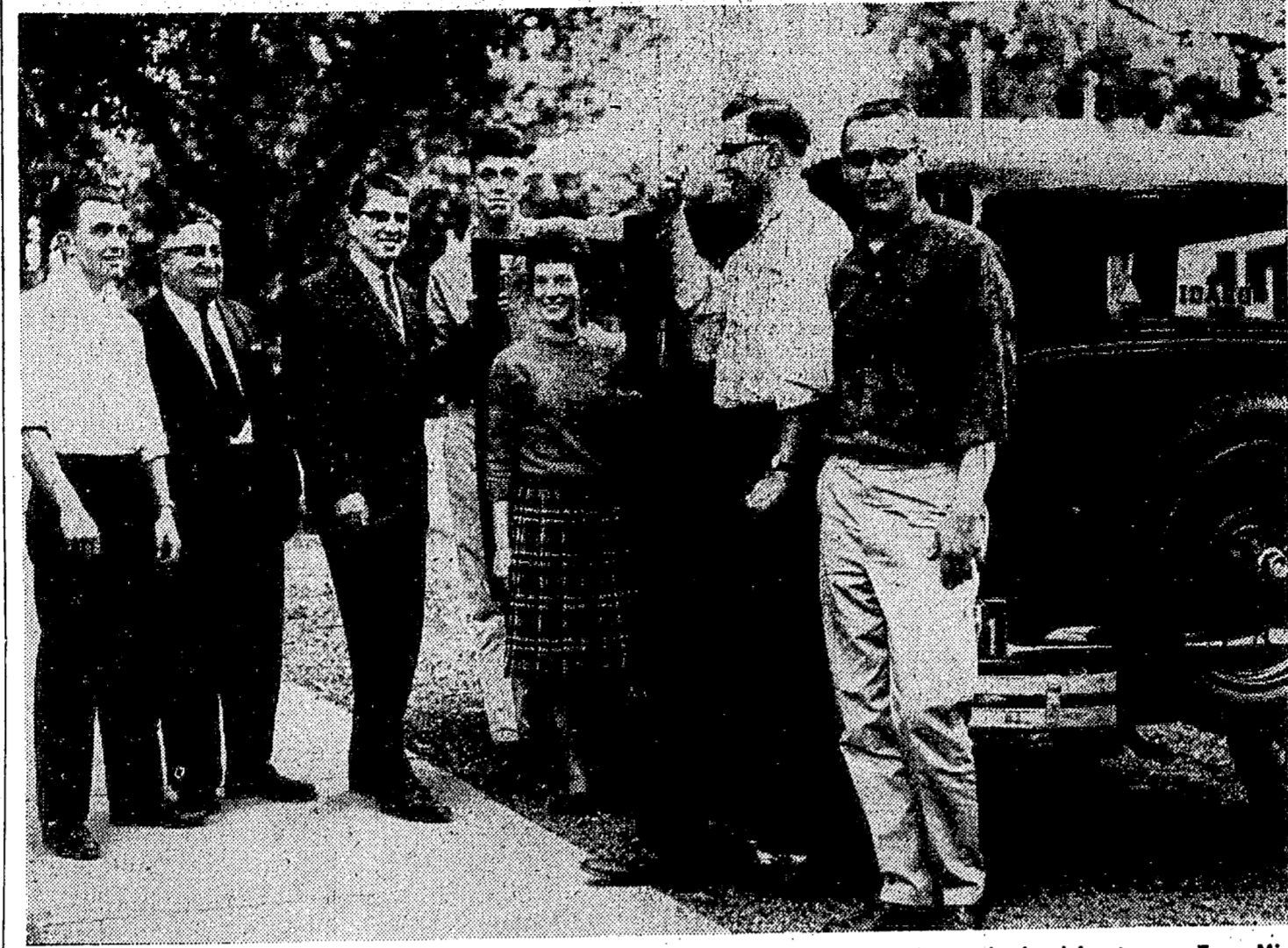
More elaborate stunts and finer techniques are being planned for the Dad's Day Card Section, according to Carl Berry, Sigma Nu, ASUI public relations director. Each time a card section performs their stunts the pattern becomes more complex and intricate and therefore more pleasing.

A more professional look is thus being planned for Dad's Day with the participants flipping the cards in unison and sorting the different colors between their legs.

This year's stunts are being done with an eye to the future, and consequently a permanent committee has been appointed with Butch Tiger, ATO, as chairman, and Barbara Blair, Pi Phi, as assistant chairman.

The committee will lay groundwork for the three home games next year and the year to follow. The present card section consists of 840 students, but plans are being made to expand to two card sections.

LEADERSHIP RETREAT OPENS SATURDAY



READY FOR RETREAT — Student leaders representing various campus activities are boarding a "limousine" bound for the annual Student-Faculty Retreat which starts tomorrow at Camp Lutherhaven on Lake Coeur d'Alene. The group is wondering if this mode of transportation will transport them to their northern destination. From left to right the delegates are: Terry Mix, Phi Delt, Exec. Board member in charge of the Retreat; Gale Mix, ASUI general manager; Jim Mullen, off campus, ASUI president; Jim Okeson, Beta; Sally Jo Nelson, Gamma Phi; Gordon Powers, Willis Sweet, Harold Schillref, Gault.

Idaho Students, Faculty Will Talk Chalk In Forest Solitude

Dean Boyd Martin's keynote address, "The University of Idaho in the Next Five Years," will set the pace for this year's Student-Faculty-Administration Retreat, Terry Mix, Phi Delt, chairman of the Student-Faculty-Administration Retreat, said yesterday.

The annual overnight outing of students, faculty, and administration officials starts Saturday afternoon at Camp Lutherhaven on Coeur d'Alene lake. About 70 persons, ten more than last year, are expected to attend, Mix said. The general theme is "Knowledge, the Key to Success."

Frosh Forum Will Close '61 Orientation

The last event of freshman orientation and New Student days will take place tomorrow at the Student-Faculty Forum from 10 a.m.-12 noon.

Freshmen students will be divided into 31 groups for the discussions. One faculty member and one upperclassman will conduct the sessions.

According to Guy Wicks, associate dean of students, the Forum is as much a part of the New Student days as the earlier tests of tests. Attendance will be taken in each group.

Suggested topics for discussion are academics, student activities and social activities.

Ideas Originated
The idea of a Faculty-Student Forum as part of Freshmen orientation was developed two years ago by Bob Carlson, Beta, then New Student Days chairman, and Wicks, advisor. It received final approval from the Administrative Council in time for inclusion in this year's program.

According to its supporters, the Forum will help place a greater emphasis on academics for new students.

Sections Named
New students should report to the section and location as indicated below:

- Aa to Arrington — Ad. Build.—104
- Arrington to Becker — Ad. Build.—109
- Becker to Bohlin — Ad. Build.—205A
- Bohlin to Brush — Ad. Build.—208
- Brush to Christofferson — Ad. Build.—210
- Christofferson to Crosley — Ad. Build.—227
- Crosley to Donat — Ad. Build.—301
- Donat to English — Ad. Build.—305A
- English to Fleeharty — Ad. Build.—306
- Fleeharty to Gilson — Ad. Build.—317
- Gilson to Guiles — Ad. Build.—318
- Guiles to Hawkins — Ad. Build.—326

(Continued on Page 2 Col. 3)

October 13 Is Closing Date For Enrolling

The record enrollment at the University continued to grow this week with the addition of 10 more students, bringing the total enrollment Thursday night to 4352.

The record number is creating serious shortages of housing on the campus and also a traffic congestion problem of dynamic proportions, registration officials said.

The last date for enrollment is Oct. 13, after which time no students will be allowed to enroll in the University. Currently a \$15 fine is levied on all late applicants signing up for University courses.

Couples May Bowl For SUB League

Anyone interested in a mixed couples' SUB bowling league should contact Bill Logan in the SUB bowling alley before Oct. 15, when the league is scheduled to start.

Pros And Cons On Gem State Sales Tax End Idaho Economic Future Conference

A debate Wednesday on the institution of a sales tax in Idaho by two University of Idaho professors and two Idaho businessmen closed out the three-day conference on Idaho's economic future held at the Student Union building.

Dr. R. A. Postweiler, associate professor of economics at the University, and Dr. Myron Porges, a Pocatello optometrist, voiced their opinions for the adoption of a sales tax. Dr. Max E. Fletcher, associate professor of economics at the University, and Robert Farber, Payette department store owner, expressed their feeling against such a tax.

"Arguments against a sales tax are an emotional buttress against contributing to society," Postweiler stated in his pro-argument. He said with a sales tax, benefits received by a large family through services will be larger than what the family pays.

Porges, on the other proponent, said we must decide if we want to run the State of Idaho the way other states are run — with modern services.

Speaking against the tax, Fletcher asserted the people of Idaho must explore other alternatives before they rush into the adoption of such a tax. He also said the sales tax is a costly tax to administer. The other anti-sales tax speaker, Farber, noted that Idaho now has the lowest per capita income of western states. He feels that a sales tax will raise all taxes in the state and would hurt the per capita income.

"If the sales tax is adopted, Idahoans will be paying the highest per capita tax in the United States," Farber stated.

Dr. D. R. Theophilus, president of the University of Idaho, told the industrial leaders Monday night that the impact of research in the nation's universities in the last ten years has been the most important phase of the U. S. educational system.

He pointed out in his address, "Growth of Higher Education," that enrollment figures are important but "the impact of research has been more important."

"Population Explosion" is expected to hit Idaho and the Northwest in the near future and the Gem state must offer the incoming industrialists cheap power — the key to economic progress. George Brunzell, of Spokane, president of Washington Water Power Co. concluded by telling the industrialists: "If Idaho is to grow and if her products are to compete more favorably with those from other parts of the nation, she must get power cheaper and cheaper."

Dean David Kendrick, of the College of Business Administration and chairman of the economic conference thanked business and state leaders for pooling their talents in providing discussion and topics for the conference.

Students Will Have Big Hand In Closed-Circuit TV Operation

Within a month \$30,000 of television equipment will be in the hands of radio-television students on the campus when the first closed-circuit television programming begins at the University of Idaho.

An "excessive amount" of work by the physical plant members this summer has delayed the completion of the CCTV (common name of closed-circuit television) installations on the campus. This new teaching process, which will bring instruction to the classroom through the television screen, was expected to be in operation when school started two weeks ago.

Students of the radio-TV center, trained in the operation and maintenance of the complicated television equipment will operate the entire CCTV, under the supervision of radio-TV faculty members, when it starts next month. Physical plant workers are installing the equipment in the television building, the brick building west of the temporary radio center. Various company television technicians are aiding in the installation.

Since the fall term is underway it is doubtful that an entire course will be taught through television cameras this semester, but plans

call for such courses as photography, geology, teacher education, history and political science to be taught with the CCTV method next semester.

CCTV will be most beneficial to courses requiring demonstration or observation. Usually in these classes there are many students enrolled. This prohibits the necessary viewing of detailed points and leaves many students confused about the demonstrations.

The television camera can give all the students in the class a closer look at the minute details of the demonstration.

Friday Night Date Will Be Costly--70c

Do you want to spend three and a half hours with your friends Friday night?

It will cost you only 70 cents to do just that according to the Spurs. At the Spur Nickel Hop each 15 minutes will cost 5 cents and for 3½ hours that adds up to 70 cents.

Remember, Idaho coeds usually don't come this cheap!

SUB Chairmen Chosen; New Program Starts

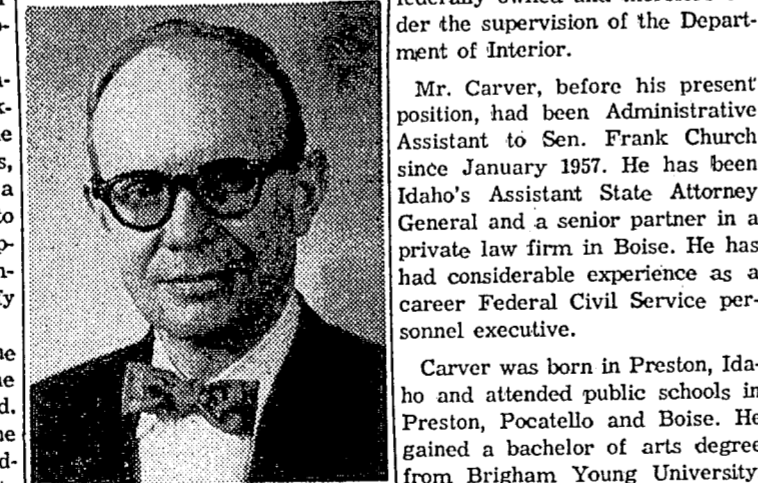
New Student Union committee chairmen were chosen by the student directors of the SUB following interviews Wednesday night.

Those selected were: Ann Weber, Kappa, exhibits chairman; Janice Carlson, Alpha Gam, off-campus program chairman; John Gamble, Beta, delat chairman; Wally Swan, Delta Sig, coffee hours and forums chairman; and Judy Scoggin, Theta, hospitality chairman.

A new area was formulated at the weekly program council meeting. This area, the off-campus program, was formed to study and develop the SUB's responsibility to married and single off-campus students.

Mrs. Sharon Grossenbach, SUB Board chairman, said, "This is one area especially where active and imaginative leadership and ideas are needed to let the off-campus student know of the services and facilities the SUB has to offer."

Interviews will be held for members for all SUB committees Thursday at 7 p.m. All those interested in interviewing for an opportunity to work in the program are urged to attend.



John A. Carver
Ass't. Sec. of Interior
Second in the leadership of a federal department tremendously important to Idaho's welfare, Carver supervises the activities of the Bureau of Land Management, the Bureau of Indian Affairs, the National Park Service, the Office of Territories, and the Alaska Railroad. 67 per cent of Idaho's land is federally owned and therefore under the supervision of the Department of Interior.

Mr. Carver, before his present position, had been Administrative Assistant to Sen. Frank Church since January 1957. He has been Idaho's Assistant State Attorney General and a senior partner in a private law firm in Boise. He has had considerable experience as a career Federal Civil Service personnel executive.

Carver was born in Preston, Idaho and attended public schools in Preston, Pocatello and Boise. He gained a bachelor of arts degree from Brigham Young University. He also studied at the Boise Junior College, George Washington University, Montana State University and the University of Idaho.

on the calendar

SATURDAY
Anyone interested in joining KUOI staff, 10 a.m., at KUOI on 3rd floor of SUB.

SUNDAY
Phi Mu Alpha smoker and coffee hour, 7 p.m., SUB South Ballroom. Five short talks and a performance by the University Trio will be presented. All interested persons are invited to attend.

THE GOLDEN FLEECE

by Jason

This is a weekend for retreats. At 8 a.m. tomorrow morning ASUI student leaders, key faculty members and University administrators will leave for Camp Lutherhaven for a weekend of discussions on student problems.

And tomorrow from 10 a.m. to 12 noon freshmen students will "retreat" to classrooms and discuss problems they have encountered during the first two weeks at the University with faculty and upperclassmen.

The methods employed for the two weekend retreats are quite different, but the end goals should be the same: To increase understanding between students, faculty and administrators.

The frosh student-faculty forum was initiated this fall to give a more academic slant to Freshman Orientation. This is a slant that has been too long overlooked at Idaho.

The gradual gathering of a political storm, which has been brewing since the opening of school, became more noticeable this week with the decision of the Kappa Sig and TKEs to join CUP Party.

The move by both of these houses did not surprise too many people in political circles. Neither house has gained any political grounds in the United Party, and both houses have a few politically ambitious members. These two factors don't justify the status quo.

Although no Greek house had ever joined CUP, or its predecessor, Independent Party, in recent years, several have shown interest, especially right after elections in which their representatives didn't make any political ground.

After about 10 members of the Delta Sig fraternity joined CUP last year, they succeeded in electing the ASUI Vice President on the CUP ticket. Jim Judd was also chosen CUP Vice President, but resigned that position earlier this year. The Delta Sig, as a house, however, have never tried to join CUP.

Now that the so-called "Have Nots" of the United Party have joined CUP, it will be interesting to see if they can become the "Haves" in CUP.

It will also be interesting to see if CUP, which is staging a vigorous pre-election campaign, can succeed in pulling any more living groups into its fold. One group of particular interest is McConnell Hall, which as far as Jason knows, has not officially come out for either side.

In four weeks a lot could happen to both parties—and maybe even a third party.

Sharon Lance

Public Events Topic

Discuss World Rule Of Law

By Jim Herndon
Argonaut Managing Editor

"World Rule of Law," the subject of Monday's Public Events speech is as complicated and controversial as the atom bomb.

Basically, the concept of world rule by law means making a set of standards and enforcing the decisions, uniformly throughout the world, according to Dr. R. E. Hosack, head of the Social Science Dept.

The idea, Hosack says, is not new and is practiced in limited areas today.

Not New

"The general proposition was proposed and advocated by Americans during the Taft administration," Hosack explained.

Since that time the idea has cropped up in the League of Nations during President Wilson's time, and more recently in the United Nations.

World rule of law is practiced in certain instances in the world today, under the name international law. Regulation of the high seas is one example.

Pro And Con

Individuals who argue for the world rule of law state that there is enough common ground among the peoples of the world to enable all problems to be solved by legal means.

Those that oppose the possibility of peaceful rule by a set of standards, do not believe that this common ground exists.

Monday's public events speaker, Dr. Arthur Larson, director of the World Rule of Law Center at Duke University, looks on the concept of world rule of law as "an idea whose time has come."

Larson, who is a former special consultant to President Eisenhower, and author of several books, is noted as a positive man who looks at life and world affairs "from the standpoint of what we are for and what we can do."

According to Larson, "there is one promising line of action which has been badly neglected by people living under the shadow of hydrogen war—that of building upon the world's concept of law." In his address to the public events assembly, Larson is expected to explore the problem of translating this idea into reality.

Hosack believes that world rule by law could come within the next 20 or 30 years. However, Hosack clarifies his stand.

"We have developed the machinery for making the law and enforcing the decisions," he said, "but though it is possible, I won't say that it is probable."

Dr. Bernard C. Borning, dean of the College of Letters and Sciences and also a political science professor, agrees with Hosack.

"It is very possible that world rule by law could come in the foreseeable future," Martin said.

Dr. Bernard C. Borning, chairman of political science, while not directly disagreeing with his colleagues, does not believe that a set of standards can be developed to rule all governments.

Borning admits that international law works in some areas, primarily when an individual or private company is concerned.

"There is always the possibility that governments can be ruled by world law, however, I don't believe that there is enough common ground among nations to let them settle all disputes."

"I do not believe that there can be world rule by law in the foreseeable future," Borning said.

The Idaho Argonaut

Official publication of the Associated Students of the University of Idaho issued every Tuesday and Friday of the college year. Entered as second class matter at the post office at Moscow, Idaho.

Official publication of the Associated Students of the University of Idaho issued every Tuesday and Friday of the college year. Entered as second class matter at the post office at Moscow, Idaho.

Editor: Sharon Lance
Associate Editor: Larry Roby

YOUR NEW YORK LIFE REPRESENTATIVE

ON THE IDAHO CAMPUS
ROGER KANE, C.L.U.

Professional Building
Phone TUCKER 3-3081

NEW YORK LIFE INSURANCE COMPANY
Life Insurance • Group Insurance • Annuities • Pension Plans
Accident & Sickness Insurance



The ICE CREAM BAR HI WAY HOUSE

"Home Made Ice Cream Daily" and Light Snacks
327 West 3rd

"Home of the Vandalburger"
Pullman Road

WIN FREE Lube or Wash DRAWING DAILY

Jack's Mobil
— Next To Shakey's

The Biggest Bargain In Medical History!

Because of the spectacular progress in the development of miracle drugs, your doctor's prescription is the best value ever in health protection.

WARREN'S DRUG

WELCOME TO IDAHO — For Your Gem Photo

RUDY'S STUDIO

304 W. 6th TU 2-7701

Nickels VS. Sobriety

Some time in years past an organization contemporarily known as the Spurs devised a controversial plan that was a sure-fire money winner. This plan which attempts to convert Idaho co-eds into dance hall girls is known euphemistically as the Nickle Hop.

More accurately it is called Campus-Wide-Idaho-Males - Get - Drunk-and-Dance-With - Imprisoned - Idaho Females-Night.

This at least seems to be the realistic appraisal of the annual function by Idaho students. Despite this, and perhaps an unsavory reflection is appearing, many of the students seem to enjoy the night's festivities. They all seem to think it is socially a good idea.

Strongest protests are heard from

the senior women whom their respective living groups deign to require their presence at this annual affair. The female upper-classmen feel, however, that it is really a good thing for their younger cohorts.

A few protests emerge screaming from the sophomore girls, mostly from those that have had some traumatic experience with a slightly balding man of uncertain age who has perhaps overim-bibed a bit, and somehow managed to get wind of this delightful collegiate activity.

A survey of men on campus produced not one unfavorable opinion of this event. Due to the nature of things the Argonaut will not take a firm stand on the desirability of continuing its existence but will in a cowardly way say that the Spurs probably need the money.—J. M.

Classes Shortened For Event Speaker

Classes will be shortened Monday morning for the Public Events Speech at 11 a.m. as follows:

1st period—8 to 8:35 a.m.; 2nd period, 8:45 to 9:20; 3rd period, 9:30 to 10:05 and 4th period, 10:15 to 10:50. Afternoon classes will be as usual.

CLASSIFIEDS

LOST AT THE HOMECOMING dance was a white fur-like short jacket, with three-quarter length sleeves and collar. The jacket buttons down the front. If you picked the jacket up by mistake please call Claudia Anderson, TU 3-1742.

Varsity Theater

OPEN FRI.—SAT.—SUN.
"WORLD WITHOUT END"
Tops in Science Fiction
"FLAT TOP"
Exciting Action
— CARTOON —
Plus Extra Bonus Show Fri. & Sat.
"JINX MONEY"
With the Bowery Boys
All Color Programs start 6:40

MUSIC FRAT ENTERTAINS Five short talks will be given at the meeting and the University fraternity will hold a smoker and Trio will perform. All interested persons are invited to attend the Student Union South Ballroom.

Good Food Quick Service

— FOR THAT QUICK SNACK OR COMPLETE DINNER TRY

DRIVE Z INN

410 W. 3RD TU 2-6501

Enjoy Your Dinners and the Friendly Atmosphere at Moscow's Famous

NOBBY INN

At The Sign of The Big "I"

Most of your life is spent in your shoes. SHOE REPAIRING Keeps them looking like new.

STEWART'S SHOE REPAIR
509 1/2 South Main.

WARDS PAINT & HARDWARE

All Sporting Goods
Guns — Basketballs
Tennis Equipment
Golf

Is this the only reason for using Mennen Skin Bracer?

Skin Bracer's rugged, long-lasting, aroma is an obvious attribute. But is it everything?

After all, Mentholated Skin Bracer is the after-shave lotion that cools rather than burns. It helps heal shaving nicks and scrapes. Helps prevent blemishes. Conditions your skin.

Isn't these sound, scientific virtues more important than the purely emotional effect Skin-Bracer has on women? In that case, buy a bottle. And—have fun.

Check your opinions against L&M's Campus Opinion Poll '7

Who'd make the best wife?

WOMAN EXECUTIVE FASHION MODEL NURSE SECRETARY TEACHER

② Is it better to marry in college-or wait till later?

MARRY IN COLLEGE WAIT TILL LATER

③ How many cigarettes do you smoke a day?

LESS THAN 8 8-12
 13-17 18-22 OVER 22

Here's how 1383 students at 138 colleges voted!

Start fresh Stay fresh with L&M

Any way you look at them—L&M's taste better. Moisturized tobaccos make the difference! Yes, your taste stays fresh with L&M—they always treat you right!

Try fresh tasting, best-tasting L&M today... in pack or box!

Whether you smoke a little or a lot, give your taste a little break. Stay fresh with L&M.	Percentage
Less than 8	20%
8-12	28%
13-17	19%
18-22	18%
Over 22	15%

Category	Percentage
Teacher	40.8%
Nurse	27.9%
Secretary	16.4%
Executive	3.0%
Marry in College	15.4%
Wait till later	84.6%

Friday, October 6, 1961

House No

Kappa Phi D

By BRIDGE Argonaut E

The new pledge year at Sigma Chi recently elected the coming year Kimball; vice president, Judy chairman, Judy treasurer, Carol chairman, Jan W. er, Jean Farley.

Initiated into Norma Carter, wife of a local chapter of a local chapter College before it with Gamma Phi Fisher, Patty H. lough and Carmen SIGMA C

Pledge officer year at Sigma Chi Brent Aitken; vice president, Lundy; social chairman, secretary Boyer; song leader grass.

Homecoming year at Sigma Chi last weekend Rafe Gibbs and J. Rogers, all of Mrs. Jack Toews Mr. and Mrs. E. throp, Washington Amos Barlow a all of Boise; Mr. Alexander, Spokane Kraus, Coeur d' PI PHIS H.

Homecoming were Sheila G. Jones, and Me Janet Marshall, Anderson, McCa McMacken, Lew Dinner guest Yee, Boise; M Harvey, Mr. and Lewiston; Mr. a Blair, Spokane; Willis Pressey II Manville, Phil Laughlin, Gred Nu; and Bob M

WE -SELL -TR

TYPEW

VAIL'S 212 S

AI

slim 'n s

RAPIERS, with extra less. Cuffle cotton. Wa You'll love

CRE

House News

Kappas Give Diamond Key; Phi Delt Host Famous Alum

By BRIDGET BEGLAN Argonaut House Editor
The new pledge class of Gamma Phi recently elected officers for the coming year.

Initiated into Gamma Phi were Norma Carter, who was a member of a local chapter at Idaho State College before it became affiliated with Gamma Phi National.

SIGMA CHI HOSTS

Pledge officers for the coming year at Sigma Chi are, president, Brent Aitken; vice president, John Lundy; social chairman, Jim Alexander; secretary-treasurer, Ron Boyer; song leader, Roger Snodgrass.

Homecoming guests at the house last weekend were Mr. and Mrs. Rafe Gibbs and Mr. and Mrs. Dick Rogers, all of Moscow; Mr. and Mrs. Jack Toevs, Ephrata, Wash.; Mr. and Mrs. Earl Pfeiffer, Winthrop, Washington; Mr. and Mrs. Amos Barlow and Ron Fletcher, all of Boise; Mr. and Mrs. A. J. Alexander, Spokane; and Jim Kraus, Coeur d'Alene.

PI PHIS HAVE GUESTS

Homecoming weekend guests were Sheila Gates, Mary Kay Jones, and Mert Kurdy, Boise; Janet Marshall, Portland; Andrea Anderson, McCall; and Mary Kay McMacken, Lewiston.

Dinner guests included Grant Yee, Boise; Mr. and Mrs. Guy Harvey, Mr. and Mrs. Al Hansen, Lewiston; Mr. and Mrs. Marshall Blair, Spokane; John Hanson, Fiji; Willis Pressey III, Phi Delt; Gary Manville, Phi Tau; Gary McLaughlin, Gred Crossman, Sigma Nu; and Bob McGinty, ATO. Lew

WE -SELL -TRADE -FIX TYPEWRITERS VAIL'S OFFICE EQUIPMENT 212 So. Main

AI Rapiere slim, smart 'n smooth! RAPIERS, continental styled with extra smooth front. Beltless. Cuffless. Crisp sanforized cotton. Wash 'em. Wear 'em. You'll love 'em! CREIGHTONS

Andrews, SAE, was a dinner guest Tuesday. Mrs. McCartney has again lent her presence to the Phi Phis while Mrs. Geary is recuperating from the evils of the flu.

EXCHANGES - WSH STYLE

Two functions recorded as belonging to Willis Sweet were with the new and fruitful McConnell Hall.

KAPPAS HAVE BANQUET

Competition between the classes was announced Tuesday night at the semi-annual Kappa banquet with the Seniors coming out on top.

SAES SCORE VICTORY

The Delt Women's Day at the Delt-SAE football game turned out "very well." SAE won 0-0!

PHI DELTS ELECT

John Travis was recently elected president of Phi Delta Theta to replace outgoing president Dick Minnas who is attending law school.

Guests at Ethel Steel during Homecoming were: Lois Newkirk, Moscow; Glen Christian, Garland, Texas; Patty Weed, Deary, Idaho; Lois Anderson, Naples, Idaho; Lola Kopschke, Mrs. Chase, and Mrs. McFarland, Lewiston; Sharon Davis, Yakima, Wash.; Carlyn Bohrer, Spokane, Wash.; and Sandra Thornock, Emmett.

There will be a meeting at 4:00 Wednesday in MG 109, for freshmen basketball players. All freshmen interested please attend.

Junior IFC representative, Dick Flood; and song leader, Mel Cook. Friday, the Phi Delt will be visited by Mr. Robert G. Miller, national executive secretary. This week the Phi Delt was honored with another visit by one of their outstanding alumni from the Idaho chapter - Mr. Donald Kirk David, who was on the campus to lead the economic and business seminar held here this week.

FH CONTRIBUTES

All French House contributed to the Homecoming wardrobe of Joyce Staley whose trunk hasn't arrived as yet.

LINDLEY "PICTURES"

Lindley's customary "freshman pictures" were once again a "splashing" success Monday as the frosh smiled while gallons of water poured upon them.

UNIVERSITY EXCHANGES

Alpha Chi Omega-Gault, Alpha Phi-Sigma Alpha Epsilon, Delta Delta Delta-Delta Sigma Phi, Gamma Phi Beta-Phi Delta Theta, Kappa Kappa Gamma-Upham, Pi Beta Phi-Campus Club, Forney-Kappa Theta Pi, French-Kappa Sigma, Hays-Phi Kappa Tau, McConnell-Town Men's Assn.

FROSH BASKETBALLERS NOTE

The physical and social development was stressed through tribal games and the religious aspect was typified by daily non-sectarian devotions.

At the end of the two weeks in St. Louis the "Daisy" girls traveled to Camp Minnawaca near Muskegan, Mich. Here they formed a part of a group of 600 girls from all over the world.

Two Received Summer Trips On Scholarship

Danforth scholarship trips were awarded to two home economics majors this past summer.

Gift To Be Given

An anniversary gift to the university, in the form of an addition to the Delta Gamma Scholarship for the Blind, will be presented during an afternoon open house at the chapter house.

Registration

Friday's anniversary events, including registration from 4 to 6 p.m. followed by a buffet supper and an evening fireside, will center around the Delta Gamma chapter house on campus.

Crown To Go To New Queen At Violet Ball

At the annual SAE Violet Ball October 14, Pat Matheny, Alpha Phi, current Violet Queen, will relinquish her crown to one of 14 candidates now in the running.

ENGAGEMENTS

A skit enacted by Bev Bucklin, Pi Phi, with the help of Sharon Nieland, announced Bev's engagement to Tim Pickering, a Phi Tau from ISC, now living off campus.

SMITH-SALES

A mighty "Mouse" holding a Delta Chi insignia with the inscription "Happy Pinning," in part announced the pinning of Penny Smith, Theta, to Doug Sales, Delta Chi. A white candle entwined with red rosebuds was passed, and cupcakes, bearing small flags stating "Sales" were served.

SOCIAL NEWS and features

200 Alums Of Delta Gamma Arriving For Anniversary

Attending the 50th anniversary reunion of Nu chapter of Delta Gamma sorority October 6-8 will be alumnae members coming from as far as Osage City, Kan., and Stockton, Calif.

Margaret Assmussen, house president, is working in conjunction with the alums in preparation for the event.

About 200 alumnae members will be attending from Moscow and other cities, to be greeted by the sorority house. Nearly 900 women have been initiated into the Idaho chapter since its inception Sept. 16, 1911.

Both Miss Unzicker and Miss Thornock agree that one of the most wonderful things of their trip was meeting new people from other places and seeing how they live and what their views are.

OPEN 24 HRS. A DAY

Week's Winners of FREE RANCH BURGER & SHAKE Linda Jacobsen & Jim Hays

RANCH CAFE

Across From Safeways

DR. J. HUGH BURGESS Optometrist Contact Lens Specialist Quick, Accurate Duplications in our laboratory O'Connor Bldg. Ph. 2-1344

Campus Churches Slate Speakers

WESTMINSTER FORUM - Sunday's meeting will begin at 5:30 p.m. at the Presbyterian Church. The Rev. Wally Toevs, Director of Koinonia House, WSU will lead a discussion in "Is Drinking my Own Business?"

UNITARIAN - Weldon Schinke, Moscow attorney, will address the Unitarian Fellowship Sunday at 10:30 a.m. His subject is to be "Role of the Church in Modern Law."

LSA - Pastor Phil Engstrom, Pullman, will discuss "Twentieth Century Morals" at the LSA meeting Sunday at Emmanuel Lutheran, Sixth and Jefferson, Moscow.

WESLEY FOUNDATION - Facing the Challenges of Student Life" will be the topic of discussion by a panel of Methodist students at the meeting of Wesley Foundation this Sunday, beginning at 5 p.m. at the Methodist Church.

SMITH-SALES - A mighty "Mouse" holding a Delta Chi insignia with the inscription "Happy Pinning," in part announced the pinning of Penny Smith, Theta, to Doug Sales, Delta Chi.

Rings 'N Things

ENGAGEMENTS BUCKLIN-PICKERING A skit enacted by Bev Bucklin, Pi Phi, with the help of Sharon Nieland, announced Bev's engagement to Tim Pickering, a Phi Tau from ISC, now living off campus.

SMITH-SALES A mighty "Mouse" holding a Delta Chi insignia with the inscription "Happy Pinning," in part announced the pinning of Penny Smith, Theta, to Doug Sales, Delta Chi.

SIEVERT-MCGINTY A gaily wrapped package passed at the fireside circle was opened to reveal a Pi Phi arrow chained to an ATO maltese cross. It was the announcement of Sue Sievert's pinning to Bob McGinty.

KELLY-RIFFLE Joanne Heller, Bridget Beglan, Judi Tuttle and Nancy Hewett were dressed in black to assist Patt Kelly, Pi Phi, in announcing her pinning to Keith Riffle, SAE.

On Campus with Max Sholman Author of "I Was a Teen-age Dwarf," "The Many Loves of Dobie Gillis," etc.

THE GIRL I LEFT BEHIND ME

It happens every day. A young man goes off to college, leaving his home town sweetheart with vows of eternal love, and then he finds that he has outgrown her.

Well sir, you can do what Rock Signafoos did. When Rock left Cut and Shoot, Pa., he said to his sweetheart, a simple country lass named Tess d' Urbevilles, "My dear, though I am far away in college, I will love you always. I will never look at another girl. If I do, may my eyeballs parch and wither, may my viscera writhe like adders, may the moths get my new tweed jacket!"

Then he clutched Tess to his bosom and planted a final kiss upon her fragrant young skull and went away, meaning with all his heart to be faithful.

But on the very first day of college he met a coed named Fata Morgana, a girl of such sophistication, such poise, such savoir-faire as Rock had never beheld. She spoke knowingly of Franz Kafka, she hummed Mozart, she smoked Marlboros.

"You can hit me in the stomach, if you like." Illustration of a man and a woman.

Now, Rock didn't know Franz Kafka from Pancho Villa, or Mozart from James K. Polk, but Marlboros he knew full well. He knew that anyone who smoked Marlboros was modern and advanced and as studded with brains as a ham with cloves.

So all day he followed Fata around campus and listened to her talk about Franz Kafka, and then in the evening he went back to the dormitory and found this letter from his home town sweetheart Tess:

Dear Rock, Us kids had a keen time yesterday. We went down to the pond and caught some frogs. I caught the most of anybody. Then we hitched rides on trucks and did lots of nutsy stuff like that. Well, I must close now because I got to whitewash the fence.

Your friend, Tess P.S.-I can do my Hula Hoop 3,000 times.

Well sir, Rock thought about Tess and then he thought about Fata and then a great sadness fell upon him. Suddenly he knew he had outgrown young, innocent Tess; his heart now belonged to smart, sophisticated Fata.

Rock, being above all things honorable, returned forthwith to his home town and walked up to Tess and looked her in the eye and said manfully, "I do not love you any more. I love a girl named Fata Morgana. You can hit me in the stomach with all your might if you like."

"That's okay, hey," said Tess amiably. "I don't love you neither. I found a new boy."

"What is his name?" asked Rock. "Franz Kafka," said Tess. "A splendid fellow," said Rock and shook Tess's hand, and they have remained good friends to this day. In fact, Rock and Fata often double-date with Franz and Tess and have heaps of fun. Franz can do the Hula Hoop 6,000 times.

Marlboro. in the king-size soft pack and famous flip-top box, is sold and enjoyed in all 50 States. And king-size unfiltered Philip Morris Commander, made of superb natural tobaccos, is also available wherever you travel.

Not Steel! But CHINA !! by SYRACUSE See the Carefree China balance a car at the Gem Shop today. This is the true China that is really beautiful but still guaranteed against chipping for a full year. A special Sale price today makes stopping in A Must. The Gem Shop Mel Kincaid Phone 3-1425

We all make mistakes... ERASE WITHOUT A TRACE ON EATON'S CORRASABLE BOND Typing errors never show on Corrasable. The special surface of this paper makes it possible to erase without a trace-with just an ordinary pencil eraser. Results: clean-looking, perfectly typed papers. Next time you sit down at the keyboard, make no mistake-type on Corrasable! Your choice of Corrasable in light, medium, heavy weights and Onion Skin. In handy 100-sheet packets and 500-sheet boxes. Only Eaton makes Corrasable. A Berkshire Typewriter Paper EATON PAPER CORPORATION PITTSFIELD, MASS.

Quality is the key to success at Western Electric Admittedly, our standards are high at Western Electric. But engineering graduates who can meet them, and who decide to join us, will begin their careers at one of the best times in the history of the company. For plentiful opportunities await them in both engineering and management. As we enter a new era of communications, Western Electric engineers are carrying forward assignments that affect the whole art of telephony from electronic devices to high-speed sound transmission. And, in the management category alone, several thousand supervisory jobs will be available to W.E. people within the next 10 years. Many of these new managers will come from the class of '62. Now's the time for you to start thinking seriously about the general work area that interests you at Western Electric, the manufacturing and supply unit of the Bell Telephone System. Then when our representative comes to your campus, you'll be prepared to discuss career directions that will help make the interview profitable. After a man joins Western Electric, he will find many programs that will aid him in exploring the exciting course of his career - while advancing just as fast as his abilities allow. And he'll be secure in the knowledge that he is growing with a company dedicated to helping America set the pace in improving communications for a rapidly growing world. Challenging opportunities exist now at Western Electric for electrical, mechanical, industrial, and chemical engineers, as well as physical science, liberal arts, and business majors. All qualified applicants will receive careful consideration for employment without regard to race, creed, color or national origin. For more information about Western Electric, write College Relations, Western Electric Company, Room 6106, 222 Broadway, New York 38, New York. And be sure to arrange for a Western Electric interview when our college representatives visit your campus.

Western Electric MANUFACTURING AND SUPPLY UNIT OF THE BELL SYSTEM Principal manufacturing locations at Chicago, Ill.; Kearny, N. J.; Baltimore, Md.; Indianapolis, Ind.; Allentown and Laureldale, Pa.; Winston-Salem, N. C.; Buffalo, N. Y.; North Andover, Mass.; Omaha, Neb.; Kansas City, Mo.; Columbus, Ohio; Oklahoma City, Okla.; Engineering Research Center, Princeton, N. J.; Teletype Corporation, Skokie, Ill.; and Little Rock, Ark. Also Western Electric distribution centers in 33 cities and installation headquarters in 16 cities. General headquarters: 195 Broadway, New York 7, N. Y.

In The Spotlight

by Herb Hollinger

Vandals Look For Second Win, Frosh Hope To Better Record

Another big weekend is ahead for the Vandals. In fact, it seems as if the Vandals always have a big weekend, one way or another. This is the month of October. The Vandals' football schedule for this month is slightly less than atrocious. Omnibus October finds the Vandals engaging Oregon State, Washington State, Army, and Utah State in that order.

If Idaho might possibly get by Oregon State, and after outplaying San Jose State in the second half they could just do that, they will tangle with the winless, and badly beaten Cougars across the line. From the way things are shaping up, the WSU game looks like the easiest one on the docket for October. Army and Utah State, well, the Vandals will be there, and if physically fit, may surprise everybody.

A lot of people didn't think that Idaho could even come close to beating San Jose, but we did. And even though the outcome of the game was in doubt until the last play, the Vandals still outplayed the Spartans in the second half and this is mighty unusual for Idaho. This might just be an unusual season for the Vandals, or the start of winning seasons in Vandaland; who knows for sure?

World Series highlights: If the Spurs don't get too big a crowd for their Nickel Hop, it might be that somebody is losing money on the Series. The Series and the Nickel Hop are somewhat similar—they both charge to get in, and there are always a lot of disappointed fans.

The Idaho frosh football team is big, big, big! Don't be surprised if the frosh have another big, or better season than the fine squad last year. The frosh lost only to Wenatchee last year in a close game. They defeated the University of Washington Pups and the WSU Cougar yearlings in two impressive games.

That's a big record to equal or better, but this year's crop looks like it is capable of doing just that.

Intramural touch football is going strong and from the looks of the scores there are two or three top teams in each league. League I looks real strong with four and possibly five teams still in contention. Right now the Betas are on their way to the League title, but per touch football, anything can happen.

League II, the same thing holds true. The Sigma Nus look strong but there are three other teams which might give them trouble. Leagues III and IV find three big teams, Willis Sweet, Lindley, and TMA.

**NO MATTER WHERE YOU
YOU CHANCE TO ROAM
WE'RE GLAD TO WELCOME
YOU BACK HOME**

TOP TOP DRIVE IN

3rd and Jefferson Parking Is Easy

**JUST IN !!
BEAUTIFUL COMPONENTS**

We finally received our new stock of components. We sold out completely on our Petite Opening.

**COMPONENT OWNERS
ASK ABOUT OUR TRADE-UP PLAN.**

Here is a chance to get a beautiful cabinet and build your own real sound stereo.

Moscow Music Center
Complete Music Service

**WEBFOOT
SALE!!**

TODAY & SATURDAY

OPEN TONIGHT ONLY
TILL 8:30

The EMPIRE
Pullman, Washington



AD LAMN action finds the Town Men's Association battling it out with Chrisman Hall. TMA kept its hold on first place, along with Lindley, by downing Chrisman, 8-0, in League III play Wednesday afternoon.

Fiji, Sigma Nu Take Vital Wins In Race For IM Lead

**By Rod Higgins
Arg. Asst. Sports Editor**

Late scores: Phi Gamma Delta, beaten Tuesday by one point by the Sigma Nus, turned the tables on the Delta Sigs yesterday afternoon and salvaged a 6-2 victory. The win kept them in second place behind the Sigma Nus, who defeated Lambda Chi, 14-6. Other League II games saw the Sigma Chis over LDS, 25-0, and the Phi Deltas clobber Theta Chi, 25-12.

Former Sports Editor Notes OSU Fired-Up

Ed. Note: Gary Randall, last year's co-editor of the Argonaut and former sports editor, is attending law school at the University of California. He attended the Oregon State-Stanford football game last Saturday and the following is his comments on Idaho's next foe — the OSU Beavers.

Berkely, California — If the Idaho Vandals think Oregon at Eugene was unkind to them in their first game of the season, the odds are that the Beavers from Oregon State are going to try to be much unkind Saturday.

The Beavers lost their second in a row last weekend, falling to a fast, powerful Stanford team that looks to be one of the surprise powerhouses of the coast. The Beavers hit an off day against the Indians, but the 34-0 defeat could spell trouble for the Vandals.

First Half Oregon

Against the Indians, Oregon State ran up twice their opponents' ground yardage in the first half, but the Indians came back strong to turn the tables. The Vandals, with a perennial lack of depth, may find this problem hard to cope with.

A post game comment by a national coach pretty well summed up what's in store for Skip's crew Saturday. The coach, who plays OSU in two weeks, noted that the Beavers are going to be "plenty fired up and ready to take it out on somebody."

Worst Idaho Defeat

OSU ran up the highest score in Idaho history two seasons back with a 68-18 romp over a team that was probably as strong, or stronger, depth-wise, than the

1961 Vandal eleven. And that romp, it might be noted, also came with an OSU sporting a no-wins, all-losses mark.

"The Vandals will have a tough go, but it's just barely possible if the squad plays like it did against San Jose, there may be another upset. Stanford, a team pretty well written off this year, did it on a come-back, maybe the Vandals have the same thing going."

**LOOK!
GIRLS**

We have sports wear for you that is way out.

**Slacks!
Kookie Coats!
Sweaters
and
Skirts**

Jaclyn's
114 SOUTH MAIN
Ph. 2-7551

Vandals Face Winless But Eager Beavers

Fresh from an upset victory over San Jose State, the University of Idaho Vandals journey next to Corvallis for an encounter with Oregon State University. The Vandals go with the hope that they can make it two in a row.

However, trouble is brewing in Beaverland. The Beavers lost their opener to Syracuse, and last Saturday, were rudely clobbered by Stanford 34-0. This is only the second loss to the Indians since 1953.

After these two losses the "word" out is that the Beavers are planning on taking out revenge on someone — namely the Vandals. Head coach Tommy Prothro, long the proponent of the closed gate practice session, has openly manifested his displeasure over the Beaver's performances. It is his contention, along with those of sports writers, that OSC has not been hitting as they have in years past.

Wants Action

Prothro wants action, and has demonstrated his displeasure by shaking up the lineup on several occasions. In Prothro, Idaho will be meeting a coach who is out for blood.

An addition to the disadvantage of facing an aroused team, the Vandals must overcome a psychological block as well. In 1959, OSC, with a team inferior to this year's, bombed Idaho 66-18 — the worst defeat that the Vandals have ever suffered at the hands of the men from Corvallis.

Better Performance Expected

Furthermore, the Vandals face a big array of manpower. Many believe that Oregon is far better than their performances indicate. Clearly, the horses are there, and they are impressive in size, number and talent.

End to end, the Beavers average out at 205, while the backfield weighs 190. Overall, the starting team in 1961. While these statistics are not as impressive as Beaver teams of the past, they are quite adequate.

Numerically, OSC is possibly even more impressive. Prothro has the depth to dig four deep if necessary. In the Beaver losses to Syracuse and Stanford, depth was actually an OSC strong point.

The personnel of Oregon State is equally impressive. The Beavers

In addition, OSC has been particularly poor on pass defense, with the trouble cropping up in early practice and failing to improve as the season has progressed. Last Saturday, Stanford had a field day through the air. Vandal quarterbacks Mike Mosolf and Rick Dobbins looked good against San Jose and should they get hot, Prothro and the Beavers could be in for a rough afternoon.

BABE RUTH

Question — Who pitched the longest complete Series game?
Answer — Babe Ruth, then with the Red Sox, won a 14-inning, 21 game from the Dodgers in 1916.

N.Y. GIANTS

Question — The Yankees have the most World Series wins (18). What team has the most losses?
Answer — The New York Giants (9).

Kenworthy
Tonight Through Saturday

Never on Sunday

Sunday — All Next Week
Sun. At 4:30-7:00-9 P. M.
Mon.-Sat. At 7-9:30

MARLON BRANDO
ONE-EYED JACKS

NUART
TONIGHT THRU SATURDAY
At 7 and 9

VOYAGE TO THE BOTTOM OF THE SEA

Sunday Through Wednesday
At 7-9

**FREDRIC MARCH
BEN GAZZARA
DICK CLARK
BOA BALIN
EDDIE ALBERT**
THE YOUNG DOCTORS

AUDIAN
PULLMAN
Tonight Through Saturday
At 7-9:10
"GOODBYE AGAIN"

Sunday Through Tuesday
At 7-9
"CLAUDELLA ENGLISH"

CORDOVA
PULLMAN
Tonight Through Saturday
At 7:30
"THE GUNS OF NAVARONE"

Sunday — All Next Week
"ONE-EYED JACKS"

Big Sky
MOTOR MOVIE—Pullman
Tonight Through Saturday
At 7 P. M.
James Stewart—Lee Remick
in
"ANATOMY OF A MURDER"
Elizabeth Taylor —
Montgomery Clift
"SUDDENLY LAST SUMMER"

Sunday \$ Buck Night \$
Oct. 8 — At 6 P. M.

Paul Newman—Barbara Rush
"THE YOUNG PHILADELPHIANS"
Will Rogers Jr. —
Maureen O'Sullivan
"WILD HERITAGE"
In Color

DIAL TU 3-1201 FOR
THEATRE BILLBOARD

How to get yourself a superb new MONARCH portable typewriter by Remington

“We'll help you convince your parents you should have a Remington MONARCH portable typewriter to take the work out of your school work... and make homework fun! All you do is fill out and mail the coupon below. Then we write a letter to your folks outlining the reasons why a Remington MONARCH portable can help you get better grades. (Incidentally, the MONARCH portable comes complete with carrying case plus a terrific self-teaching touch-typing course that's a pushover to master!) Ask to see the rugged, modern, compact MONARCH portable at your college store or your Remington dealer!”



CHECK THESE SUPERB "EXTRA FEATURES": 1. Single key instantly sets or clears columns and indents! 2. Touch regulator adjusts to your individual "feel"! 3. Variable line spacer lets you type "right on the lines" of ruled paper! 4. Adjustable paper edge guide lets you insert paper precisely every time! 5. Calibrated scale on paper bail lets you center your headings faster! 6. Numerals and calibrations on paper table simplify margin settings—positively! 7. Erasure table on cylinder simplifies making corrections! 8. Card and writing line scale lets you type more precisely! 9. Removable top cover makes ribbon changing and cleaning easier! 10. Carriage centering device locks machine tight for safer carrying! 11. Two-color ribbon and stencil control! 12. Lighter weight without a hint of flimsiness or "creep" while you type!

Mr. William Most, Advertising Manager
Remington Portable Typewriter Division
Sperry Rand Corp.
315 Park Avenue South, N. Y. 10, N. Y.

Yes, my parents could use a little convincing... and I can happily use the Monarch portable to take the work out of homework!

YOUR NAME _____
ADDRESS _____
CITY _____ STATE _____
PARENT'S NAME _____
ADDRESS _____
CITY _____ STATE _____

VOLU
Lars
Wo
Stu
Argo
Instea
world p
study th
fore act
vised a
Public E
morning
tended.
"The
aid in t
quaint
lems an
much as
tion," L
Rule of
versity,
are too
know en
lems, L
In his
Larson
red as
"democr
set goa
goals th
the free
ward.
Larson
internat
sharing;
knowled
Larson
rule of l
make re
place in
tional d
civilized
ment of
There
moteness
ing the k
Larson
versities
already
world ru
Accord
tion for
be a bo
chinery
ance of
of the de
Rapid
Larson s
ly bill in
al court
affairs, f
world -
United S
Internat
now has
in the Ur
Accordin
Rule of
out a le
the secret
before D
"When
had anti
us," La
Rall
Sen
A dec
when mo
tradition
bench or
the distr
The fl
drive in
tion buil
in which
found su
were du
iously s
receive
tered by
man.
Feelin
for the
adminis
into a fl
has all
C
Carl
tions I
Rally c
the stu
of these
some th
discont
"the e
help the
and ma
of their
Possib
institute
willing,
Tradit
thing u
often s
the alm
event,
Berry
tion we
school
standin
schools