

Idaho Argonaut

VOLUME 68, NO. 8

UNIVERSITY OF IDAHO, MOSCOW, IDAHO

Friday, October 18, 1963

Two Homecoming Queens Picked In U of I First



WE GOT QUEENS — The Tri Delta-Phi Tau Queen's float will be seeing double this year. On one side we have co-Queen Jeri Ross, Alpha Phi, who is a French major with an interest in showing her father's ponies at fairs and rodeos.

Kathy Baxter, Jeri Ross Reign Over Homecoming

The 1963 Homecoming—in commemorating the days past with a Territorial Centennial theme—has also introduced something new for the coming era—it has selected two girls for Homecoming Queen.

University of Idaho males selected Kathy Baxter, DG, and Jeri Ross, Alpha Phi, as co-Homecoming Queens for 1963 for the first time in University history.

"It is appropriate in this Centennial year that a new feature came up in the contest for Homecoming Queen. It speaks well of the University that we not only had two very qualified candidates, but that all five were Queens in their own right. It could have been a five-way tie very easily," said Gale Mix, ASUI manager.

The two competed for the title against Barbara Clark, Kappa; Linda Elliott, Pi Phi; and Mary Lou Levi, Tri Delta.

The tall, brunette Miss Baxter and the pert, brunette Miss Ross were interviewed simultaneously Thursday noon with the other three candidates without knowing the outcome of Wednesday's voting. They were informed of the results this morning, long after the issue of the Argonaut was locked tight in the pages.

Miss Baxter, a junior majoring in English from Buhl, plans to teach high school English or junior high music upon graduation from the University. A talented pianist, Miss Baxter has played the piano for her own pleasure and for entertainment at public gatherings for several years.

Jeri Is French Major

A junior from Coeur d'Alene, Miss Ross intends upon pursuing her major in French. After graduation she plans to attend summer school in Quebec, Canada, to gain a more conversational knowledge of the language and either train as an airline stewardess for Air France or a French-English interpreter in Europe.

mer she shows her father's string of Shetland Pony stock at fairs and horse shows throughout the state.

The Queens have something in common—they both served as royalty for the Sophomore class last year when Miss Baxter was selected as Holly Queen and Miss Ross as Holly Princess.

In answer to a question concerning the fourteen queens at the University Miss Baxter said:

"Enough Is Enough
"I think that there are plenty of queens at the University and there shouldn't be any more than there are now. However, if a fraternity, class or organization wants a queen to represent them, that is their business."

Miss Ross agreed with her fellow Queen, but said:

"I feel that the campus is stressing beauty more than grades. We came to college to study, but academics tend to become secondary."

Both queens agreed that Homecoming Queen is not in any way overshadowed by the multitude of Queens on campus.

Loyalty To Ideals

The two girls agreed that the University has outstanding loyalty to its ideals, both as students and as alumni. "I don't know about other campuses, but there is a great deal of loyalty here, because of the big crowds Mother's Day, Parent's Day and Homecoming—also a U of I graduate is also first to say 'I went to the University, too' when you tell them where you are from," Miss Baxter said.

"In reference to other campuses we have superior loyalty and spirit for the size of our student body. Larger campuses have less; smaller campuses, because of their size, may have more. But we do have good turnouts at our games and other special functions. Because our graduates and alumni are loyal to us, we also are loyal to them," said Miss Ross.

Skits, Rally Begin '63 Homecoming

Skits, parades, a rally, football game, and a dance will highlight Homecoming on the Idaho campus this weekend.

Freshmen will play an active part in early festivities. They will display their talent in short humorous skits as they represent their living groups in Vandal Victory this afternoon at 4 in the Student Union Bucket. Later freshman girls will use their heads to stay on their feet as they parade through men's living groups at 6:30 p.m.

Upperclassmen will join the action as each living group armed with a sign forms a cheering section at the rally at McLean field. Coach Dee Andros and his Vandal football team and president of the Idaho alumni, James Roper, Burley, will be introduced during the rally. A display of fireworks will end the evening's activities.

Saturday morning will find 30 living groups and organizations putting the last touches on floats they are entering in competition for three top prizes in the "Vandal Victory" parade at 9:30. Ten high school bands from the northwest, the University of Idaho band, Spurs, Mortar Band, Blue Key, Vandalettes, and Angel Flight

will march in the parade down Moscow's main street. Other entries will include campus and civic groups. Dignitaries of the parade will include Senator Len Jordan, President and Mrs. Theophilus, President James Roper of the Alumni Association, Gale Mix, ASUI Manager, ASUI President Bill Frates, and ASUI Vice-President Carvel Whiting, Executive Board members, and Miss Moscow, Carol Farley.

Alumni, parents, and students will gather in Neale Stadium at 1:30 Saturday afternoon to watch the Vandals as they host the Tigers from the University of Pacific. Vandalettes will provide pre-game entertainment for the group as they perform several drills. During half-time of the game, the introduction of the five finalists and the crowning of the new Homecoming Queen by James Roper, alumni president, the presentation of the "I" blanket to the Vandal Booster of the year and announcement of the three winning parade floats will be highlights. Recognition will be given to the alumnus that traveled the farthest, and the oldest alumnus during half-time.

The University of Idaho marching band will play and perform several routines for the audience. Campus living groups will open their doors to visitors at 4 p.m. and close depending on the individual house.

A buffet dinner in honor of the alumni will be held in the cafeteria of the SUB during which the ASUI Hospitality Committee will act as hostesses and waitresses. This buffet will be open from 5 to 9 p.m. Special reunions are planned for the classes of 1933, 1943, 1948, 1953, and 1958. Signs will designate their meeting places Saturday noon at a pregame luncheon which will be held from 7 to 9 p.m. in the Blue Bucket for the alumni. A booth in the center of the SUB lobby will provide information and tours as Homecoming participants register Saturday morning from 8 to 12.

Homecoming, 1963, "Building a Better Idaho," will draw to a close as strains of music are heard at "Centennial Swing" as couples dance to the music of Norman Thue, of Spokane. Decorations for the dance will include the stage backdrop of the setting sun over the hills of Idaho, and eight white backdrops with gold symbols representing Idaho's progress in the last 100 years. An outline of Idaho with Moscow as a center will act as the dance (Continued on page 3, col. 3)



IN CENTENNIAL COSTUME — And, on the other side of the float we have co-Queen Kathy Baxter, DG. Miss Baxter, an English major, is also an accomplished pianist. In line with the Centennial theme of Homecoming, both queens are attired in costumes of the period.

Borah Speakers Tuesday, Discuss 'Lion Of Senate'

Three eminent students of Idaho's late Sen William E. Borah, the "Lion of the Senate," will present lectures about the life and times of Borah during the first Borah Foundation lecture of the 1963-64 school year Tuesday.

Dr. Marian C. McKenna, assistant professor of history at Manhattanville College of the Sacred Heart, N.Y., and author of a full-length biography of Sen. Borah; Dr. C. O. Johnson, professor emeritus of Washington State University and visiting professor at the University of Montana; and Dr. J. Chalmers Vincent, professor of history at University of Georgia and author of "Borah and the Outlawry of War," will each present one-hour lectures Tuesday morning, afternoon or evening in the Student Union Ballroom.

Lectures Plus Food
In addition to the three lectures, a dinner will be held at 6:30 p.m. Tuesday in the Galena Room of the Student Union Building, in honor of the late Senator at which students, faculty and townspeople are urged

to meet the lecturers, Dr. Robert Hosack, chairman of the Borah lecture series, said Thursday.

The program differs from last year's fare in that three lecturers will speak during the day instead of the usual one. Formerly a lecturer would speak at one main engagement and several small gatherings during the day.

Outlawry Of War

Dr. J. Chalmers Vincent will deliver his lecture at 8 p.m. on the topic "Borah and the Outlawry of War" which deals with the Senator's influence on international politics. The first lecture of the day will be given at 10 a.m. by Dr. Marian C. McKenna, author of the biography "Borah" which is the only full-length book dealing with the life of the Idaho Senator. Classes will be dismissed during the lecture.

Dr. McKenna will speak on "Borah the man."

The second lecture at 2:10 p.m. will deal with Borah's influence on American politics. Dr. C. O. Johnson will present the talk.

Royal Motor Inn May Open Nov. 1

A tentative opening date of Nov. 1 of the 37-unit Royal Motor Inn at Sixth and Jackson has been announced by owners Kranz and Beauregard.

The new motel will furnish television, air conditioning, telephones and a swimming pool.

A special addition is a conference room, which can also be used as a type of dorm for visiting ball teams.

Watts' Child Dies From Heart Disease

A daughter of Joseph Watts, business manager of the University, died enroute to school Thursday morning from a congenital heart condition.

Carol Beth Watts, 10, died shortly before 9 a.m. while walking to Lena Whitmore school where she attended the fifth grade.

She was born July 22, 1953, at Moscow and had lived here all her life. Survivors include her parents, Mr. and Mrs. Joseph Watts; three sisters, Jane Anne, Houston Hall; Linda Kay and Sue Ellen, both at home; grandparents Mr. and Mrs. E. A. Deobald, Kendrick; and grandmother, Mrs. William A. Watts, Kendrick. Services will be held at Short's Chapel at 4 p.m. Friday. The Rev. Raynor Smith, pastor of the Moscow First Methodist Church, will officiate. Burial will be at the Moscow cemetery.

U-I, ISU Differ In Increase Type

By KIP PETERSON
Argonaut Associate Editor
Some interesting comparisons may be made between the increases in enrollment at the University and its sister institution, Idaho State.

Toward this end, the editors reprint a story from the Idaho Daily Statesman which was published Oct. 11, 1963.

For comparisons' sake, we include the following figures from F. L. O'Neill, University of Idaho registrar:

Enrollment jumped from 4,560 in the first semester of last year to 5,084 this fall. The University's enrollment increase of 11.47 per cent shows its primary increase in the freshman and sophomore classes as follows:

Freshman increase over last year: 192; sophomores, 189; juniors, 17; seniors, 90; and graduate students, 8. The graduate student enrollment was deliberately restricted this fall because of the cut-back of state funds. (See story page 1).

The figures for the University of Idaho do not include ex-

tension, correspondence, adult education, or National Reactor Testing Station program at Idaho Falls.

Enrollment at ISU fell slightly in the freshman class and graduate division, with primary increases in seniors, juniors, and School of Trade and Technical education.

The Statesman Story:
POCATELLO (AP) — Idaho State University's quadrangle and walkways look busier at class-break time this year than last and for good reason—some 500 more students are using them.

The final first semester enrollment figures released Wednesday by Registrar Alton B. Jones show a total registration of 3,561 students, an increase of 467 over a year ago and a brand new all-time record for the institution, which just this year became a university.

Jones said that the 1963-64 registration represents a 15 per cent increase over last year, the largest jump the school's enrollment has taken in a single year since it became a university. (Continued on page 2, col. 3)



WHERE THE MONEY GOES — Or, where the money went was not in the graduate program which L. C. Cady, dean of the Graduate School, heads. Cady's school was limited in enrollment this fall because of the cut-back of state funds—to the tune of 760 applicants turned away.

Cut Back Funds Forced Grad Admission Denials

The cutback in appropriated funds this year for the University forced the Graduate School to deny admission to the greatest number of applicants in its history, Dean L. C. Cady revealed today.

A total of 760 applicants for graduate studies were told this year they could not be accepted at the University of Idaho. The number is more than double that of those who were accepted, 368—only 18 more than a year ago. The University's overall resident enrollment bounded to 5,083—523 more than in the

fall of 1962.

"When it was learned that 14 per cent of the University's budget would be held back for the first six months of the biennium and probably for the entire biennium, it was decided to keep the Graduate School's enrollment to about the same as last year," explained Cady. "Graduate students on the whole take much more money to educate than do undergraduates. They take more of a professor's time, and often require more expensive laboratory equipment. "On the other hand, graduate

on the Calendar

- FRIDAY**
International Student Committee, 4 p.m., Sawtooth.
ICEP, 4 p.m., Exec Board Room.
- SATURDAY**
MUN, 10 a.m., Pow Wow.
- SUNDAY**
Vandal Bridge Club, 1 p.m.
- SATURDAY**
MUN, 4 p.m., Pow Wow.
- MONDAY**
Cosmopolitan Club, 8 p.m., Gold Room.
- MONDAY**
Campus Cooks, 7:30 p.m., Pend d'Oreille.
- Election Committee, 8 p.m., Ee-da-hoo.

McConnell Hall Joins United

By KAREN SMITH
Argonaut Editor
McConnell Hall, as a men's dormitory, again voted to join United Party Monday night, marking the first time in two years that an Independent living group has been a member of United Party.

On October 7, 1960, McConnell made University history by being the first dormitory to ever join or be accepted into United Party and to make way for the era of cross-campus politics.

Coeds Were CUP — When the dormitory was converted into a women's residence in Sept. of 1961, the coeds voted to become members of Campus United Party and continued their membership through the 1962-63 school year.

Barry Nelson, United Party

president, welcomed the group officially into United and stated "After the smoker Tuesday evening between CUP and United at McConnell Hall, McConnell voted to join United Party. It was their decision, we are happy to have them."

The addition of McConnell to United Party ranks has boosted the United Party roll call to 22 members:

ATO, Beta, Delta, FarmHouse, Lambda Chi, Phi Delta, Fijii, Phi Tau, SAE, Sigma Chi, Sigma Nu, Theta Chi, Alpha Chi, Alpha Gamma, Alpha Phi, Tri Delta, DG, Gamma Phi, Theta, Kappa, Pi Phi and McConnell.

At the United Party meeting Wednesday night, three new committees were formed: Membership, Ray Rocha, Beta, chairman; Campaign, Jay Ney, FarmHouse, chairman; Constitution, Bob Cameron, McConnell, chairman.

Peck To Resign
In other political occurrences on campus, Frank Peck, Delta Sig, will officially resign as first vice president of CUP Oct. 23 at the CUP caucus meeting.

The coming resignation of Peck has caused predictions by members of both parties that Delta Sigma Phi, now officially on the roster of CUP party, may consider joining United Party. Nothing has been made official, as of today's paper.

Each member living group of United party will nominate one member from their living group, one member of another living group or two members of a living group other than their own for each class.

Tuesday evening United caucus will narrow the nominations from each living group down to a slate of eight—four men and four women to be placed on the primary ballot.

Only Fresh
Tuesday evening's meeting will be limited to only Freshman class nominations in order that all Freshman candidates will be given a chance to speak and list their qualifications, Nelson said.

Transfer students and new students to the Idaho campus will also be given the opportunity to speak, Nelson said. Wednesday evening, slates for Sophomore, Junior and Senior class officers will be drawn up by the United Caucus. The slate of eight candidates (Continued on page 2, col. 2)

United — Again

"Campus Union Party's potential membership may have gone down by one group this week, but party leader Larry Hossner, Upham, viewed it as a mixed blessing."
 —from the Argonaut, Oct. 7, 1960.
 McConnell has again joined United, this time on Oct. 15, 1963.
 For the second time in two years as a men's living group, McConnell has joined United. Again, McConnell is the only Independent living group in the predominately Greek-oriented party.
 And during the intervening years? For the past two years, McConnell has housed women — who joined CUP.

For the past two years, United has been all-Greek—as the party was all-Greek prior to the formation of Campus Union Party in the spring of 1960.
 Just exactly what will come of this new alliance — or old alliance re-formed — is difficult to guess.
 We feel sure that United, to regain some status lost in the last two spring elections, must become a truly cross-campus party.
 To quote the old Arg again:
 "It took a hell of a lot of guts to do what McConnell Hall did Monday night." Only this time it was Tuesday night.
 —K.P.

Show What?

A lot of us will be showing our parents around the Idaho campus during the next two days; some of them will be seeing it for the first time.
 We'll take them to lunch at living groups, herd them to the football game, show them through the houses during open house and probably take them out to dinner Saturday night.
 If we get a chance, we may take them on a fast whirl around the campus and point out the Administration Building, the Library and the "I" tower.
 But when we start hauling them around, maybe we ought to take them through, instead of past, the Administration Building, show them the Library from the inside out, maybe even

introduce them to a couple of our profs.
 Maybe instead of running around watching parades and celebrating the expected victory at Shakey's, our folks would like to see how we are educated at this institution.
 If our parents live in Idaho, they are paying for this education through their paychecks; if they live outside Idaho, they are paying through the nose. They deserve to see more than just the superficial activities which allow only a few minutes of free time during the weekend.
 The University has a duty to make itself known to the people of Idaho—a student and his parents can be an effective means of communication.—M.B.

Two Queens

For the first time in University history two Homecoming Queens have been selected at the University of Idaho.
 As Gale Mix said, it speaks well for the University that we have such well-qualified girls that the campus could not choose between them. It is also true that it could have been a five-way tie for Homecoming Queen very easily.
 But when this paper hits the streets we know that the question will arise, "Why didn't they have a revote and just choose one."
 Here are the facts:
 As Editor of the Argonaut, I was called in Wednesday afternoon to the ASUI Executive Board room where the ballots had been counted. Homecoming Chairman Bob Bushnell, ASUI Vice President Carvel Whiting and ASUI Manager Gale Mix told me the problem. They were the only ones in the University who knew.

If there were a revote for queen, it would be impossible for the Argonaut to have the pictures cast, the story set in type, and the traditional announcement made with the Argonaut Friday morning.
 Secondly, if they flipped a coin or drew a name from a hat it would not only be unfair to the girl who lost, but it would also put the person who made the decision in an undesirable position.
 Consequently, a decision was reached. The students of the University had selected two Homecoming Queens in a tie vote. The voting on the other candidates was very close. It is their selection — it is their royalty.
 So, congratulations to the Queens — congratulations to all five — their honors were well-deserved.
 —K.S.

Idaho Debaters To Compete At WSU Next Weekend

Four University of Idaho debate teams will enter inter-collegiate competition next weekend at Washington State University, and will travel to central Washington the following week for the junior division of the same tournament.
 Competing in next week's senior division of the Columbia Valley Tournament will be Colleen Ward, Stephen Meyer, Linda Bithell, Jay Childs, Sheryle Berrett and Hazel Parks. The topic will be "Resolved: that the Federal Government should guarantee an opportunity for higher education to all qualified high school graduates."
 There will also be contests in interpretive reading, oratory and extemporaneous speaking.
 Senior division of the tournament will be held the following week at Centralia Junior College. The school will be represented by eight teams, Dr. A. E. Whitehead, Idaho debate coach, said Thursday.
 Two older debaters, Wayne Kidwell and Duff McKee, both seniors in the college of law, will take the negative side against a team from Cambridge University, England, on the topic "The New Frontier Has Lost Its Way," in a debate at the

SUB in November.
 There are 24 on the debate squad this semester, Whitehead said. Returning debaters include Colleen Ward, Stephen Meyer, Linda Bithell, Joe Webster, Troy Smith, Michael Smith, Arlen Marley, Jon Trail and Jack Patrick.
HERE'S MORE ABOUT — McConnell
 will be presented to members of United Party in the primary election Friday. If time permits, Nelson said, we will vote in the SUB, if not, we will vote in the living groups.
 Members of each class will vote for two men and two women, marking a 2 for first choice and a 1 for second choice.
HEART DISEASE KILLS
 The nation was shocked that 292,000 American lives were lost during the four years of World War II. During the same four-year period, more than 2,300,000 Americans died of heart and blood vessel diseases.
 Find That Car In The Classifieds!

HERE'S MORE ABOUT — ISU
 year class in 1947.
 A breakdown of the overall enrollment reveals that the senior, junior and School of Trade and Technical Education classes are proportionately larger than last year; the sophomore class, the same; and the freshman class and graduate division, slightly smaller.
 The freshman class includes 1,049 or 29.7 per cent of the student body; sophomore class, 690 or 19.6 per cent; junior class, 636 or 17.6 per cent; senior class, 557 or 15.6 per cent; graduate division, 105; and the School of Trade and Technical Education, 510 or 14.3 per cent. The remaining 14 are classified as special students.
 There are 1,464 students enrolled in the College of Liberal Arts; 427 in the College of Business Administration; 736, College of Education; 319, College of Pharmacy and Division of Medical Arts; 105, Division of Graduate Studies, and 510, T & T (School Technical and Trade).
HOMECOMING WINNERS
 Alpha Phi and Lindley won the Homecoming decoration contests in 1937.
 The Christian Science College Organization will meet every Thursday at 7 p.m. at the SUB. The scheduled room will be



"How am I going to clean up my room before open house?"

Dear Jason

False Ad?

Dear Jason:
 The students who spent two dollars of good, hard-earned money to see Henry Mancini "and his 40-piece orchestra" should have been very disappointed in seeing and hearing a group of local union members playing Henry Mancini arrangements. We know we were disappointed. This is not to say that the musicians were not fine artists. However, Mancini just doesn't sound like Mancini without characteristic sounds of men like Vince DeRosa, Pete Candoli, Dick Nash, and many other soloists in Mancini's own orchestra who give character to the sound of the orchestra.
 Because the musicians were, for the most part, inexperienced musicians in the field of jazz, the solos were played straight

Principle Matter?

Dear Jason:
 Last Tuesday night after listening to over an hour's discussion by the leaders of both campus political parties, the men of McConnell voted to join the United Party. In doing so, McConnell resumed its position as the first and only residence hall in United Party.
 If the men of McConnell voted to join the United Party because they sincerely felt United is more concerned and dedicated to effective student government, if they voted to join because they felt United was the more representative party on campus

both in the selection of its candidates and in the actions of those candidates after elected, if they chose United because they felt the goals and principles will better facilitate progressive student government we extend not only our congratulations for a fine moral decision, but also our sincerest congratulations.
 They, then, have joined a political party because of its principles — a consideration often ignored. If the men of McConnell joined United for opportunistic reasons, if they joined due to personality conflicts, if they joined United for any consideration other than party principles they have failed not only themselves, but also United Party and the University of Idaho students. We hope they joined on principle and principle alone.
 A political party — any political party — is a unique thing. Your political science book will tell you a political party is a group of people with similar ideas who have banded together to put those ideas into action by electing its people to governmental office.
 Thus a true political party is based on ideas rather than men, the men being only agents carrying ideas. If you have no idea or principles, you have no political party. Campus Union Party has presented its ideas in the Argonaut. It is willing to clarify those principles to anyone at any time. We are anxiously awaiting a clarification of principles by United. Let us do battle in the political arena on principles.
 Arlen Marley
 CUP President

Political Unit Sets Meet

The first meeting of Idaho Center for Education in Politics will be held at 4 p.m. today in the Exec Board Room.
 Dr. Boyd A. Martin, the group's advisor, will outline the budget and proposed activities for this year.
 ICEP is a non-political organization open to anyone interested in the study of politics and political parties. Several workshops are held each year to which outstanding politicians are invited.
 ICEP also gives two fellowships for summer study with the two national parties.

CHURCH GROUP SLATES MEET

The Christian Science College Organization will meet every Thursday at 7 p.m. at the SUB. The scheduled room will be

The Idaho Argonaut

Associated College Press
 Official publication of the Associated Students of the University of Idaho, issued every Tuesday and Friday of the college year. Entered as second class matter at the post office at Moscow, Idaho.
 Editor — Karen Smith
 Associate Editor — Kip Peterson
 Managing Editor — Mark Brown
 News Editors — Fred Freeman, Janice Craig
 Sports Editor — Jim Faucher
 Social Editor — Linda Elliott
 Reporters — Dianne Weninger, Rita Thorne, Roy Haney, Jane Derr, Jeanette Lang, Jean Monroe, Paula Olsen, Edgar Simmons, Carlene Myers, Ellen Ostheiler, Mike Skok, Jake Decey, Dianne Stone, Helen Black, Carole Crawford, Valerie South, Janet Cox, Lynn Hreba.

The Golden Fleece

By Jason

Compliments Due

The ASUI executive board took a major step in campaign procedures Tuesday evening when they passed a policy restricting executive board members in their campaign activities with their parties.
 Executive board members will not be allowed to participate in any open politicking between parties, such as smokers, debates, etc. They are not prohibited, however, from making speeches to their particular group or in any other way furthering the cause of their party.
 Reason for the action was that in years before it was felt that executive board members participated too openly in smokers, debates, etc. To make the executive board run smoother, it was the opinion of the majority that it was better to steer away from an apparent split between the two parties.
 Let us hope that the policy continues through the spring elections and through future executive boards as well.

Party Upheavals

After the elections of the past two years when CUP has taken the majority of Executive Board offices, United Party is making some changes.
 Just what the changes are, as of yet, hasn't been decided or revealed. But the word is out that changes are being made. This is gratifying considering that changes in United need to be made.
 McConnell Hall joining United and the first vice president of CUP resigning, leaving the door open for Delta Sig to possibly join United is also creating discussion and speculation.
 It just could be that the tables will turn in the next election — however — if the Wallace Residence Center goes CUP, as all indications seem to point—and if the Wallace Residence Center gets organized, it would be almost impossible for United to win a majority of any offices.
 But judging on the precedence of the past campaigns, independent people are independent—regardless of what party they are affiliated with.
 This is a complimentary position, for it shows that they are free-thinkers and do what their mind dictates, not what their living group or their party demands.
 Many members of United are also free-thinkers. They vote as they see fit, not a straight ticket just to be voting a straight ticket.
 Although something might indeed be said for straight ticket voters in a national campaign, a campus campaign with its lack of completely separate and distinct philosophies and platforms, does not seem to merit straight ticket voting just for the sake of it.
 In campus politics, Jason does not feel that the old "Vote for the man and not for the party" slogan is a lazy one. It is the mark of an intelligent voter.

Predictions

Judging from the number of inspectors, contractors, etc., swarming around the Wallace Residence Center...
 The fact that carpeting will be laid on second floor of the Borah Hall of Stevenson Residence of Wallace Complex by today noon...
 Jason predicts that the men of second floor Borah will be moving in before the goal of Oct. 23—perhaps they will move in tonight!

HOMECOMING WEEKEND

RAINCOAT SPECIAL

ZIP OUT PILE LINING
 Reg. \$24.95
Now \$19.95

MYKLEBUST'S
 218 South, Main

initiative:

If you had the time—you could do the computations which the biggest data processing systems do. But they do them at electronic speed and without tiring. It calls for constant initiative to make them work better for us. You needn't know anything about them to start with. IBM has an education program for continued training. Ask your college placement officer for our brochures—and for an appointment when the IBM representative is interviewing on campus. IBM is an Equal Opportunity Employer. If you cannot attend the interview, write: Manager of College Relations, IBM Corp., 590 Madison Avenue, New York 22, N. Y.

MOVE AHEAD: SEE **IBM** NOV. 19 & 20

FINAL DAYS!

OUR ENTIRE STOCK OF **WEDDING BANDS and DIAMOND ENGAGEMENT RINGS**

20% to 33 1/3% OFF

This is a wonderful opportunity to save on fine diamond and matching wedding rings. Also all watches, watch bands, costume jewelry and birthstone rings... many gift items. Hurry, sale ends this week!

KINCAID'S GEM SHOP
 TU 3-1425 — Moscow, Idaho — 202 Main

You saw them first on television*...
 Gifts of **EATON'S** Fine Letter Papers

*NBC-TV "Today Show"

LEATHER GOODS by **ENGER KRESS CO.**

GRAB BAGS FOR WOMEN IN ASSORTED COLORS \$5.95

"DOPP KITS" FOR MEN
 BILLFOLDS FOR MEN & WOMEN

CARTERS DRUG STORE
 PH. TU 3-4561
 310 S. Main St. — Moscow
 "Where Our Sincerity Is Your Security"

House News

House-Cleaning Makes Up Preparation For Weekend

Soap, water, and wax have been the key words in nearly all living groups on campus this week, as students prepare for the annual visits of alums, parents and friends for the Homecoming weekend.

Another key word this week, again, has been pledge class elections. Six more houses announced their pledge officers for the year.

KAPPA KAPPA GAMMA Kappa pledges held a fireside to announce their new officers, who include: Janet Berry, president; Margie Felton, vice president; Mike Huddleson, secretary; Kalle Jergenson, scholarship chairman; Margene Gabica, social chairman; Karen Longteig, song leader; Cheryl Becker, public relations; Suzie Irwin, house manager and Marilyn Gabica, Panhellenic representative.

DELTA GAMMA The DG pledges chose Peggy Reed, president; Jill Mooney, vice president; Susie Filatreau, song leader; Nancy Shelman, social chairman, and Carole Crawford, Panhellenic representative.

Jeanne Marshall was "kidnapped" Monday night as the DG pledges took their sneak to Lewiston.

SIGMA NU Newly elected officers of the Sigma Nu pledge class are: Bob Anderson, president; Frank Barnes, vice president; Clayton Garland, secretary; Joe Bales, treasurer; Dennis Dimeling, social chairman; Buck DeMatte, song leader; and Richard Kinsfather, chaplain.

Sigma Nus honored Mrs. Farnsworth with a birthday dinner last Thursday.

FARMHOUSE Pledge class officers of FarmHouse are John McDermid, president; Steve Schmidt, vice president; Jay Stolworthy, secretary; and Stewart Sprenger, social chairman.

FarmHouse members recently elected Jim McConnell, song leader and Larry Edgar, rush chairman.

Members, alums and advisors of Farm House celebrated their Founders Day with an annual Smorgasbord at the Log Cabin Inn in Potlatch, Sunday.

PHI KAPPA TAU Phi Tau pledge class officers elected at the last meeting were Bob Wilks, president; Frank

DELTA SIGMA PIHI

New pledge class officers at the Delta Sig house include: Jerry Sayers, president; Buddy Brasaites, vice president; Gary Agenbroad, secretary - treasurer; Alan Carter, social chairman; Jim Fuller, sergeant at arms.

Recently elected chapter officers include Dennis Tanner, treasurer and Dick Jennings, sergeant at arms.

LINDLEY HALL Lindley elected two new officers for the first semester Paul Schneider, social chairman and Gary Michelsen, frosh representative.

SIGMA CHI Monday evening the mournful Sigma Chi pledges performed the annual fall ritual of the fly burial by burying 750 flies in the Kappa lawn with appropriate funeral services.

Blue Bucket Draws 100 Sunday

The Blue Bucket opening Sunday evening in the Student Union Building drew a crowd of about 100.

The purpose of the Blue Bucket, which is open from 5:30 to 7:30 p.m. Sunday evenings, is to provide students with an inexpensive place to eat.

The menu offers several types of pancakes, including Swedish, strawberry, blueberry, and buttermilk with sausages, bacon, eggs, and ice cream for dessert. Prices range from a minimum of 50 cents to \$1.25 for specials.

"The Blue Bucket is very informal and features candlelight, soft music, and beautiful waitresses," said Ann Albee, co-chairman of the Blue Bucket Committee.

Proceeds from the opening of the Blue Bucket totaled \$75 and will be used for further operation and maintenance. This semester marks the third year that the Blue Bucket has been in existence under the sponsorship of the Student Activity Council.

SADIE HAWKINS In the late 1930's Idaho students participated in Sadie Hawkins Days.

Dance Groups Tap Members

Orchestrations members ended two days of tryouts by tapping new members for Orchestras and Pre-Orchestras, modern dance honoraries, Monday.

"There was a very large turnout for the tryouts and the job of elimination was difficult," said President Sue Davis, DG.

New members of Pre-Orchestras, freshmen honorary, are Karen Sterner, Sharon Martinelli, Elizabeth Jones, Alpha Gam; Jan Kindschy, Pi Phi; Jan Kroll, Sheryl Berrett, Urania Morris, Hayes; Carolyn Larsen, French.

Pat Riddle, Becky Tridle, Alpha Phi; Ann McClintick, Rosalia Maio, Tri-Delta; Pamela Pauley, Campbell; Brocke Clifford, Tonya McMurtrey, Pamela Brandt, Gamma Phi; Karen Lee, Alpha Chi; and Barbara Hanson, D.G.

New members of Orchestras are Carole Ives, Alpha Gam; Elise Wendle, Joan Littleton, Alpha Chi; Joyce Barney, Sandi LaDow, DG; Jackie Smith, Linda Tague, Barbara Hardy, Pi Phi; Dixie Barnes, Nancy Woodworth, Campbell; Carolee Amos, Hayes; Sadie Evans, Tri-Delta; Cookie Fancher, Theta; and Dale Meyer, off-campus.

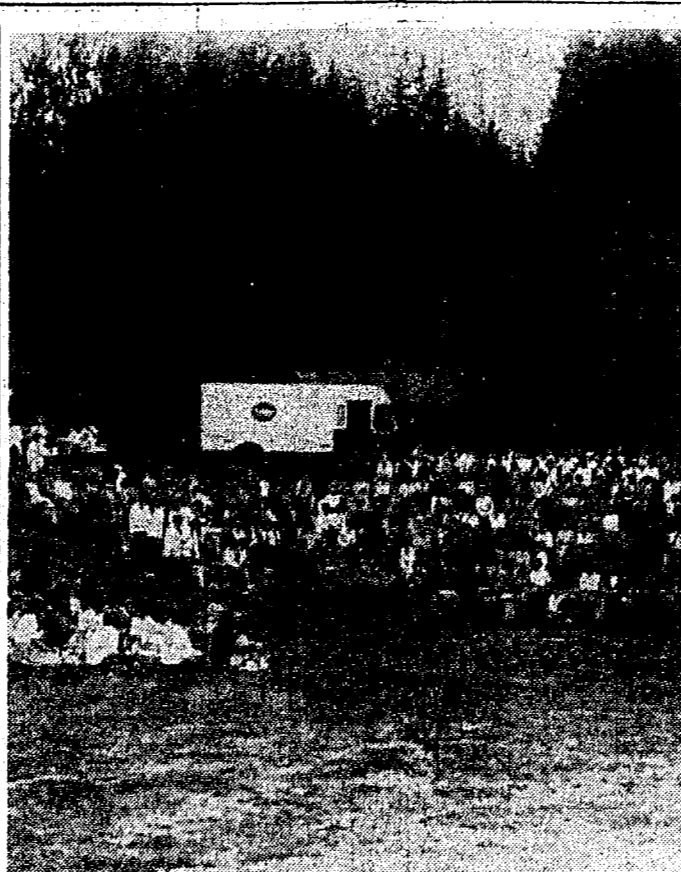
Last spring the following members of Pre-Orchestras were tapped for Orchestras; Chet Adkins, off-campus; Mary Bjstrom, Alpha Gam; Cheryl Devlin, Theta; and Penny Gale, Alpha Phi.

Also at that time, officers elected were Sue Davis, D. G., President; Mary Bjstrom, Alpha Gam, vice president; and Penny Gale, Alpha Phi, secretary-treasurer.

HERE'S MORE ABOUT — Skits

During intermission of the dance, the new queen will be introduced by Bob Bushnell, general Homecoming chairman and she will award trophies to the winners of the float competition. Dave Bell, Phi Delt, will play his drums to entertain during intermission.

Members of the Homecoming committee are Bob Bushnell, SAE, general chairman; Janet Orr, Pi Phi, queens; Jan Wendler, Gamma Phi, Vandal Victory Skits; Anne Frazier, Alpha Gam, and Joni Meyer, Theta, dance; Sherry Meyer, DG and Ken Johnson, Phi Delt, parade; Lynne McBride, DG, half-time and rally; Jean Pfaff, Alpha Chi, judges and trophies.



WHERE THE GIRLS ARE — All but less than 300 of Idaho's 1,263 women students attended the WRA-AWS "Coed Capers" get-together Tuesday by the Field House. The annual WRA folk dance festival was part of the program — the tag end of the orientation program for new students.

Pi Phi, Ethel Steel Share WRA Honors

Pi Phi and Ethel Steel tied for first place in the WRA Folk Dance Festival which concluded Coed Capers Tuesday night in the Arboretum.

Other winners included, second place: Alpha Phi; third place: Campbell Hall and fourth place: Alpha Chi. Eight living groups entered the competition Alpha Phi, Alpha Chi, Campbell, Ethel Steel, Forney, French, Hays, Pi Phi, and Gamma Phi. The dance festival had been cancelled last spring and rescheduled for Coed Capers.

The 1,000 coeds who attended the picnic were introduced to officers of WRA, Women's I Club, AWS, Spurs, Alpha Lambda Delta, and members of Mortar Board.

Each group presented either a skit or gave a talk to acquaint the coeds with the purposes of their organizations.

Clad in slacks, the girls were served barbeque, salad, carrots, potato chips, ice cream,

and milk or coffee by members of the AWS legislature, WRA executive board and presidents of women's living groups.

The purpose of the picnic which has its beginning this year, was for women students to become acquainted with one another. House presidents said that they hoped to make it a tradition.

Judges for the folk-dance contest were Mrs. Richard Farnsworth, assistant SUB manager; Mrs. E. V. Samuelson, wife of the dean of education, and Mrs. George W. Woodbury, wife of the head of the Department of Horticulture.

Last Day To Add Or Drop Classes

Today is the last day students may drop or add classes.

Students withdrawing from a class after Friday will have a grade of pass or fail recorded on their transcript.

Rings N' Things

MARRIAGES

BORGGAN - PEKOVICH Andy Pekovich was married to Jan Borrgan, Seattle, during the summer.

KUYKENDALL - GULLEY Richard Gulley, Delta Chi, married Sonja Kuykendall, Jerome, Sept. 21.

PINNINGS

TERREL - ANDREASON Harold Andreason, Delta Chi, announced his pinning to Sherry Terrel, Boise.

BUTLER - MERRIT Jerry Merrit, Delta Chi, blew out the candle to announce his pinning to Joy Butler, Murray State College, Murray, Ky.

MACGUFFIE - ELDER At an evening fireside, Lodi Stemmler announced the pinning of Linda MacGuffie, Forney, to Dave Elder, ATO, as she claimed a blue candle entwined with pink and white roses.

PHILLIPS - AITKEN Mrs. Carolyn Vest Bowler blew out a turquoise candle decorated with white roses and mums mounted in a brandy snifter to announce the pinning of Laina Phillips, Alpha Chi, to Brent Aitken, Sigma Chi, '63 Idaho grad.

APO To Check Coats At Dance

Alpha Phi Omega, the all campus men's service organization, will be in charge of checking coats at the Homecoming dance this weekend.

All new freshmen students who have a better than 2 point G.P.A. and are interested in joining the service honorary, are invited to attend their next meeting, which will be held next Tuesday at 7 p.m. in the Pend d'Oreille room of the SUB.

Representatives of the organization will meet in Seattle next weekend to plan a regional conference which will be held on either the Idaho campus or at Washington State University.

OVER 1000 GRADUATE

More than 1,000 graduates of the University received diplomas last June. The 1,004 graduating seniors were members of the largest class ever to graduate from the University.

Church News

Pledging, Open House For Religious Groups

A pledging, an open house, films and speakers are on tap for weekend activities of campus religious groups.

Latter Day Saints

President D. R. Theophilus will speak to the Mutual Improvement Association at 7:30 p.m. in the LDS Institute.

Lutheran Student

Speaker this Sunday at 5 p.m. will be Dr. Duane LeTorneau, faculty advisor to this year's Religion and Life Conference. LeTorneau will discuss natural science and the Christian faith and then answer student's questions.

Members of the group will meet in the lounge of the Campus Christian Center.

Last Sunday Lutheran students heard a panel discussion on the racial problem in the United States and in the Orient.

Panel members were Johnny Jones, Negro graduate student in education administration; Robert Johnson, undergraduate Negro student, and Malli Rad, Indian graduate student in chemistry.

Kappa Phi

Members of Kappa Phi, Methodist women service organization, will hold pledging at 7 a.m. Sunday at the First Methodist Church.

After pledging there will be a pledge breakfast at the church. The first Kappa Phi meeting was held Tuesday at the Campus Christian Center, where women saw a program based on a theme of service.

Westminster Foundation

Donald Kees, student counselor, will show films and lead a discussion on the Peace Corps

Cosmos To Hear Columbus' Letter

Dr. Ilarez, assistant professor of Spanish, will talk about the first letter of Columbus to the Queen of Spain at the Cosmopolitan Club meeting on Sunday, at 7:45 p.m.

Slides will be shown on South America and a foreign film is scheduled.

"Everybody is welcome to attend the meeting," according to Mohammed Ashrafi, president.

at the 5:30 p.m. meeting Sunday in the CCC.

Arden L. Fowler, director of the Koinonia House, will speak on intergration in a southern community at the Sunday morning meeting of the Unitarian Fellowship.

Members will meet at 500 Oak Street, Pullman, Wash. at 11:30 a.m.

Channing Club, Unitarian discussion group for university students, will meet at 6:30 p.m. at the Pullman address.

Campus Christian Center

The Campus Christian Center will hold its annual Open House Sunday from 2:30 to 4:30 p.m. in the main lounge of the center, officials said Thursday.

The center is sponsored by eight Protestant denominations cooperating through the agency of the Idaho Institute of Christian Education.

All interested persons are invited to attend.

Esquire Girl To Be Chosen

The ATO's entertained 16 Esquire Girl candidates at dress dinner Wednesday.

Representatives from each living group included Ann Luft, Houston; Kathy Kelly, Pine; Doris Christensen, Campbell; Tuck Sullivan, Pi Phi; Barbara Yoshida, Forney; Suzanne Klaaren, Hays; Charlotte Todd, Ethel Steel; Louise Bollman, French; Lynn Beenders, Alpha Chi.

Ann Hernandez, Alpha Gam; Linda Richards, Tri Delta; Tena Gresky, DG; Ann Markham, Gamma Phi; Cathy McClure, Theta; Margene Gabica, Kappa; Gene Gillette, Alpha Phi.

Each candidate will meet with the ATO's once again before the five finalists are announced at serenades on Oct. 24.

Esquire magazine will choose Idaho's Esquire Girl from pictures and articles of the five finalists sent to them.

An envelope containing the name of the new Esquire Girl will be opened by Chuck Kozak, ATO president, at the Esquire Dance in December.

Homecomingers Welcome! THE BURNING STAKE 518 University Avenue 8:00 p.m. to Midnight Tonight at 9:30 — "The Travelers" Don Snodgrass and Dave Pavelec Saturday at 9:30 — Mike Stanger Music, Coffee and Conversation

DR. J. HUGH BURGESS OPTOMETRIST Contact Lens Specialist Quick, Accurate Duplications In Our Laboratory O'Connor Bldg. Ph. 2-1344

JOHNNIE'S CAFE WELCOMES ALL! BREAKFASTS — STEAKS SANDWICHES — FOUNTAIN Open: 6:00 a.m. to 1:00 a.m. Tues., Wed., Thurs. 6:00 a.m. to 2:00 a.m. Friday and Saturday "Halfway between campus and town" On West Sixth

WELCOME GRADS, MOMS & DADS HOMECOMING SPECIALS Special Selection of SKIRTS and SWEATERS 1/2 PRICE The Parisian 312 S. MAIN TU 2-1265

"I BANK WHERE IT'S EASY!" Saving, checking, borrowing... all in ONE CONVENIENT PLACE, BANK OF IDAHO! It's a real time-saver to be able to handle ALL your money matters in one place... particularly when it's as convenient and friendly as the Bank of Idaho. Drive-up teller windows let you transact business without leaving your car. You can make deposits or payments on easy-to-make loans at any time, day or night, with our 24-hour envelope depository. Come in today and open your account at BANK OF IDAHO AFFILIATED WITH WESTERN BANCORPORATION WITH AGGREGATE ASSETS OVER \$5 BILLION 15 OFFICES SERVING IDAHO BOISE: Main Office—8th & Idaho Sts. Vista Avenue Office—1400 Vista Collister Office—4630 W. State St. Fairview & Cole Road Office CALDWELL WILDER NEW PLYMOUTH BONNERS FERRY IDAHO FALLS LEWISTON ORCHARDS RICHFIELD POST FALLS SANDPOINT COEUR D'ALENE MOSCOW MEMBER FEDERAL DEPOSIT INSURANCE CORPORATION — MEMBER FEDERAL RESERVE SYSTEM

OUR BIGGEST EVER ANNUAL MID-SEASON SALE ENDS SATURDAY AT 1:00 P.M. (We're Closed For Homecoming, Too!) OPEN TONIGHT TILL 9:00 P.M. WITH SAVINGS OF 10% TO 50% IN EVERY DEPARTMENT! DAVIDS'

Educational Television Request Is Received

An educational television center for the University of Idaho and its extension work is less than 30 days from reality, barring unforeseen events, according to Gordon Law, acting head of the Department of Communications.

Unless someone files an objection before Monday the request will be granted. Part of the money is on a dollar to dollar matching basis. Another part of the funds will come from a program allowing the University 25 percent of capital equipment, owned by the University Radio-Television department.

State Agency Forms Due

The deadline for filing applications for the position of caseworker on the Idaho State Department of Public Assistance is Oct. 25.

Application forms are available at the local Department of Public Assistance, Box 1373, Boise, Idaho.

Qualifications for the examination entail graduation from an accredited four-year college or being a second semester senior.

The examination, which is scheduled every six months, consists of written material and an interview. Afterwards, names of the applicants will be listed by the Personnel Council of the Department of Public Assistance.

Persons may be hired on a provisional basis, pending completion of an examination and an interview.

JUNIOR ASSEMBLY

The junior class in 1938 presented "Snow White and the Seven Dwarfs" at their assembly.

Originally, the department asked the Idaho Legislature for \$400,000 for a complete system, Law said. Later the request was reduced to \$179,000. In the January-February economy squeeze the request was squeezed out entirely.

One hundred twenty-five thousand dollars of the anticipated grant will be invested in a microwave system which will eventually serve the entire northern area of the state. By next year Law plans to have lines running from Sandpoint and Bonners Ferry in the north to Grangeville in the south.

The educational television programs should help with extension work by providing college level work to areas where it was not previously available, Law said, and also will be available for use at the elementary and secondary levels.

"Educational television will allow a school district to get the maximum out of teachers in special subjects, such as foreign languages and mathematics, who are difficult to hire in sufficient quantity and quality," he said.

Idaho State University is planning a similar program in two to three years. A statewide system, with another station in the Boise area, is the ultimate goal of the project.

Cost of the University project is \$177,000.

A CLASSIFIED WILL SELL IT!

Bridge Challenge

We hear the University of Idaho has visions of bridge championships. Now, therefore, WE, the bridge players of Washington State University do hereby challenge said University of Idaho bridge types to a match at Pullman on Oct. 28. If you are not afraid to show up then, we will condescend to return the visit Nov. 3 at your home table.

Jerry McVay

We, the master players of the University of Idaho, do hereby give notice of our intention of picking up the

gauntlet so incautiously thrown down by those demented souls and frustrated whist players who claim the dubious honor of representing the better bridge players of Washington State University, that institution of learning which is located within the shadow of the great accomplishments of the University of Idaho.

We will be happy to give you two lessons in winning bridge, if you are still willing to face the vengeful wrath after your first inglorious defeat on Oct. 28.

Bill Bickford

E-Board

No One Will Sanction Mass Migrations To ISU

"Mass migrations" to the Idaho State football game Nov. 16 are not being sanctioned by either the administration or the ASUI.

E-Board member Jim Scheel brought the proposition before Exec Board Tuesday night that the ASUI should charter busses to take students to the ISU game, then noted that it would take at least 16 hours to travel to Pocatello by bus and would cost \$18 per student.

Scheel read a letter addressed to him from University President D. R. Theophilus which read, in part:

"The Executive Committee noted that this fall students have demonstrated outstanding school spirit. This spirit, which reflects that of our victory dedicated football team, is to be encouraged.

"However, the long travel to Pocatello has many attendant hazards, including the fact that it would cut severely into studies and would come only ten days before Thanksgiving.

"While commending student interest, the Executive Committee voted unanimously to disapprove the proposed idea of a 'mass migration' to the game at Pocatello."

This recommendation of the Executive Committee of the administration does not mean, however, that the ASUI cannot charter a bus for the game.

Sanction Class Cuts? "We shouldn't take it on ourselves to do anything that would take away from a half day of classes," commented Jay Sherman.

After discussion, the Exec Board voted not to charter a bus.

In other Executive Board business:

—Carvel Whiting, ASUI vice president, noted that tests for Election Board will be given Monday night in the E-Board Room, and the 16 members will be selected this year instead of the usual 15.

—Marlene Finney suggested that interviews be publicized for assistant public relations director, and the E-Board members voted to handle the choice of the director in that way.

—Jay Sherman announced that Denny Dobbin, Upham, will begin distributing ASUI information Friday as the official mailman.

—Bill Frates, ASUI president, presented a report proposing administrative changes in the

High School One-Act Festival, which were accepted by the Board. These included continuance and detailing of financial support; an ASUI representative be appointed to work with the Dramatics chairman and stipulated that the Dramatics chairman and head of the Department of Humanities be directly responsible to the dean of the College of Letters and Science for the festival's administration.

This year the festival will be held in conjunction with a Shakespeare play on campus March 19 and 20.

Idaho Needs Its Natives As Teachers

The potential in Idaho for a great educational program will not be achieved until people raised in Idaho will teach in Idaho, said Dr. Everett Samuelson, dean of the College of Education, Tuesday.

Speaking to a meeting of the association, Samuelson said that teachers should be experimentally minded, open minded and have courage to fail.

"We are growing out of the time when we were afraid to do research in education because it would hurt the children," he said.

An example of experimenting that would never have been successful without hurting children was the testing of the Salk vaccine, Samuelson said.

"As you go through your experiences at the University, the degree in which you are involved in the topics concerning education will determine to a large extent the type of teacher you will be," he said.

Read critically, identify the facts and study the issues facing education, he said.

Samuelson spoke to the first SIEA meeting at which members of the College of Education faculty were introduced.

SIEA plans a mid-winter conference Nov. 12 at the University for high school and college students interested in teaching. Dr. Robert Wyatt, president of the National Education Association, will speak on "Social Responsibility in Education."

MUD HOUSE

In 1937 a senior forestry student made a four-room mud house for his use on the Idaho campus.

Newsletter Is Published

The Humanities Department at the University is publishing the "English Newsletter" to provide a wider expression of academic viewpoints and ideas for the 900 English teachers in Idaho.

The newsletter is a combination of articles written by English teachers, books for suggested reading, activities of the University English staff and additions made to the Humanities Department staff.

"We Blankets and Bird Houses" is an article written by Paul Croy, teacher at Sandpoint High School, included in the recent newsletter.

In this article Croy says that through creative writing students learn that a knowledge of grammar is essential to good expression. This will happen without the continual drill on grammar and parts of speech.

John A. McFarland of North Idaho Junior College also wrote an article for this newsletter. He suggests that the research theme only be mentioned at the high school level as a project that will be undertaken in college.

The newsletter also gives information about John Hay Fellows Program. Fellowships in humanities are offered to Idaho teachers who have a bachelor's degree, have five years of teaching experience and not be over 55 years of age.

Miss Wool Chairman To Interview

Mrs. M. C. Claar, chairman of the Miss Wool of Idaho Contest, will hold interviews from 1 to 4 p.m. Tuesday in the Kullyspell Room of the SUB for Miss Wool contestants.

The Miss Wool of Idaho Contest sponsored by the Women's Auxiliary, Idaho Wool Growers Association, differs from the "Make It With Wool Contest" in which participants make and model wool clothing. Miss Wool contestants act only as ambassadors for the wool industry.

Miss Wool of the University of Idaho, to be announced before November, will enter state wide competition. The state winner will be selected on Nov. 19 and flown to Texas in April for the national contest.

General qualifications include: 1. Be between the ages of 18 and 25.

2. She must be a resident of the state and be single.
3. She must be able to wear a standard size 10 dress, suit or coat.
4. Be at least five feet, six inches tall and not more than five feet, eight inches without shoes.

5. Have completed at least one year of activities in an accredited college or university.
(If in second semester as freshman by April, contestant is eligible.)

6. Be in good health without physical or emotional handicaps.
7. Agree to model before an audience or judges, garments, accessories and hats which will be selected by the Miss Wool Committee.

8. Be prepared to give a short talk on wool, its properties and advantages over other fibers, and be able to answer

other questions on wool.
9. Parents' written consent if under age.

10. The contestant will supply photographs as requested by committee.

11. She must agree to attend these dates as the official Miss Wool of Idaho for 1968-69: Idaho Wool Growers Convention, Boise — Nov. 17, 18, 19 and Miss Wool of America Pageant, San Angelo, Texas.

Ag Council Meets Today

The Agricultural Consulting Council for the College of Agriculture will hold its annual fall meeting on the campus here today, James E. Kraus, dean and director of the college, announced today. Eighteen representatives of State, farm, and commodity organizations and agencies make up the council, he said. Chairman of the council is George Yost, Emmett.

"The Agricultural Consulting Council plays a vital part in our College of Agriculture's three-fold program of teaching, research, and extension," Kraus points out. "The members of the council serve as close liaison between the agricultural industries and the people of Idaho and the college."

Kraus also explained that the council serves to help integrate the College of Agriculture program to best serve all.

"The members, through this council, help keep us advised about major agricultural problems of the State, and they recommend possible research projects to help overcome these problems," he said. "Furthermore they help us with ways and means of developing more effective teaching and extension programs in agriculture and home economics."

FIRST TREE

In 1911 Theodore Roosevelt planted the first tree in the President's grove on the Ad lawn.

ASUI Presents
the Exotic Sounds of
THE MARTIN DENNY GROUP

SATURDAY, OCT. 26

Grand Ballroom, Student Union

FLOOR SHOW — 8:30 p.m. - 10:00 p.m.
DANCE — 10:00 p.m. - 12:00 p.m.

\$2.00 Single
\$3.50 Per Couple

Tickets Good for Floor Show & Dance

NOBBY INN
CAFE & LOUNGE

FEATURING
• STEAKS • DINNERS • FOUNTAIN

501 S. Main TU 2-1350

SELECT FROM THIS LIST OF HELPFUL SUBJECTS

The WWP Student Research Center offers an impressive list of subjects to help with your school assignments.

- Power In The Northwest (15 pages)
- The Electric Utility Industry (36 pages)
- Energy Today and Tomorrow (16 pages)
- Progress Report On Power (8 pages)
- What Business Expects of Graduates (16 pages)

Above is a partial list of the literature offered. Send for copies or visit the Research Center — open weekdays 8 to 5. A free service of:

THE WASHINGTON WATER POWER COMPANY
General Offices, Spokane

GREAT

Selections of NEW SPORT SHIRTS

2.99 AND 3.99

FEATURING AN OUTSTANDING SELECTION OF LONG SLEEVE SPORT SHIRTS. PIN STRIPES, SOLID COLORS AND PATTERNS IN NEWEST FALL SHADES. BUTTON FRONT OR SLIP-OVER STYLES. VARIETY OF COLLAR STYLES.

TRI-STATE
PULLMAN ROAD OPEN 9 TO 9

WELCOME ALUMNI

THE IDAHO FIRST NATIONAL BANK

Students, Parents and Alumni

We Wish All Of You A Hearty Welcome For HOMECOMING

Our Coffee Shop and Dining Room Serve the Best Food in the Palouse Empire

MOSCOW HOTEL & Garden Lounge
313 S. MAIN TU 2-1121

1. What's the matter, no appetite?
I have more important things to think of than food.

2. Worried about exams, huh?
No, about getting old.

3. You're kidding?
Not at all. I've reached a milestone today. I'm 21. The days of my youth have flown.

4. You should be celebrating not brooding.
The age of responsibility is upon me.

5. How come you're not a member of the Drama Club?
Already my father's talking about my being "self-supporting." I see responsibilities all around me — wife, children, lawn, leaves.

6. Relax. You can let Living Insurance take care of responsibilities. It can provide for your family, your mortgage, the kids' education... even build a sizable retirement fund for you.
Say, this is good spaghetti.

For information about Living Insurance, see The Man from Equitable. For information about career opportunities at Equitable, see your Placement Officer, or write to William E. Blevins, Employment Manager.

The **EQUITABLE** Life Assurance Society of the United States
Home Office: 1285 Avenue of the Americas, New York 19, N. Y. ©1963

Lindley Heads League 1; SAE, Phi Dels—League 3

The standings in the Independent leagues of intramural football are fairly spread out, while the top spots in the Greek leagues are far from decided.

Lindley Hall, with a 5-0 record, holds a half game lead over Chrisman Hall (4-0-1) and a full game lead over Willis Sweet Hall (4-1) in League One. Gault 2, Lindley 2, and Chrisman 2 all have but one loss in League Two, but Gault 2 leads the league with four wins to Lindley 2's three and Chrisman 2's two.

The SAE's and Phi Dels were tied for first in League three with 5-0 records before last night's action, and both teams were favored to retain their undefeated status.

In League Four the Betas, the Kappa Sigs, the Sigma Nus and the Dels were all knotted with four wins and one loss. Last night the Kappa Sigs and the Dels met, so one of the four teams, at least will fall out of the first place tie.

ATOs Beaten
The Phi Dels knocked the ATOs out of the three way tie in League Three this week, by coming on strong after a scoreless first half to take an 18-0 win. The SAEs racked up their fifth win with a 32-0 romp over the Delta Chis. The Delta Sigs defeated the Phi Taus 13-0, and the Tekes beat the Fijis 13-0 to round out action in League Three.

The Betas handed the Sigma Nus their first defeat by a decisive 27-7 victory, while the Kappa Sigs beat LDS 8-0, and the Dels won 27-0 over the Theta Chis to keep pace. In the only other game in League Four, the Sigma Chis beat the Lambda Chis by a penetration.

Lindley maintained their narrow margin in League One by squeaking by Upham by one penetration. Chrisman also had a rough time as they squeaked out a 13-12 win over TMA. Other games in League One this week saw Willis Sweet claim a forfeit from TMA, Shoup forfeit to Gault, McConnell beat Borah 8-6, and Willis Sweet beat Borah 14-0. Upham took a forfeit from Shoup and Gault downed McConnell 14-4.

Gault 2 protected their lead in League Two with a 4-0 win over Campus Club, Lindley 2 and Chrisman 2 stayed close without playing, as they won forfeits over Upham 2 and TMA 2 respectively. In other games TMA 2 beat Willis Sweet 2, 2-0, and Campus Club took a forfeit from Upham 2.

Schedule
Monday's games will be played in the Independents, with the Greeks seeing their final league action on Tuesday. Monday's schedule includes: field 1, Lindley Hall vs. Upham Hall; field 2, Willis Sweet Hall vs. Town Men's Association; field 3, Gault Hall vs. Shoup Hall; field 4, McConnell Hall vs. Borah Hall; field 5, Lindley Hall 2 vs. Upham Hall 2; field 6, Gault Hall 2 vs. Campus Club.

Boosters Pick Back, Lineman Of The Week

The Moscow chapter of the Vandal Boosters heard the new basketball coach, Jim Goddard, give his impressions of the 1963-64 Vandal basketball team, at their weekly meeting Tuesday.

Goddard ran his charges through a full game scrimmage on their first night, and was pleased with their condition. All the players ended their games with a few minutes of full court pressing.

Back and Lineman
After hearing a scouting report of the University of Pacific Tigers from Wayne Anderson, the Boosters viewed the films of the 41-21 loss at the hands of the Oregon Ducks.

Following the film they picked the back and lineman of the week. Rich Naccarato received the first award for his many bursts through the line and into the Oregon secondary. His usual fine defensive game supported his choice.

Jerry Campbell was an overwhelming choice for lineman of the week, as he made tackles all over the field. During the film Coach Andros referred to Campbell as his "splat" man, and within seconds everyone knew why. Idaho had kicked off to Mel Renfro who ran into a flying brick wall at the 25-yard line. Campbell hit Renfro causing him to do a complete revolution in the air and came down hard. Renfro, who Andros said is as tough a player as there is in football, got up very slowly.

The Boosters were also reminded of the State Booster meeting to be held at 10:30 a.m. Saturday morning at the New Idaho Hotel.

U-GRAD COMMANDS

Maj. Horace G. Sanders, a graduate of the University and a former professional vocalist, has been named commander of the South Reserve Center in Milwaukee, Wis. His present residence is in Greenfield, Wis.



SOPHOMORE WINGBACK — Bill Scott, 6 feet 1 inch, 176 pound sophomore, has been a big help to Dee Andros' team this year. Scott, from Laurel, Md., was one of the top backs on the 1962 frosh team, and has been pushing two veterans for the starting spot.

Questionnaire Points Out Women's Gym Needs

By LINDA DERR
Argonaut Sports Writer

Both the students and the Administration are becoming more acutely aware of the necessity for a new women's gymnasium. Thirty-four years ago, in 1929, after the building of the Memorial Armory Gymnasium, the previous men's gym was turned over to the women. It is still being used today, and is the oldest gymnasium among state colleges and universities of the Northwest.

In 1929 enrollment in mandatory classes was approximately 400. Today, attending classes in the same gym, the number has more than doubled itself. This figure does not include the 400 other woman students who are using the gym for purposes such as Healthful Living, and professional preparation courses.

During the spring semester of the '62-'63 school year, a questionnaire was distributed among women students. The questionnaire sought to discover what improvements they thought necessary in the physical education department and facilities.

Sixty per cent of those returning the questionnaires were freshmen. Thirty-one per cent were sophomores, and the remaining

nine per cent consisted of juniors and seniors. Nearly three quarters of the women wanted as much or more physical education than they were required to take. According to Dr. Margaret A. Coffey, this interest could probably become even more heightened if the facilities were more competent.

Activities such as tennis, fencing and badminton headed the list of sports in which women students would like more instruction. However, due to a lack of facilities, only large classes can be arranged, not allowing individual activities.

Listed almost unanimously as the first improvement was the over-all gymnasium. The floor space was considered insufficient for the number of activities. A dance studio, and practice room were suggested improvements. Offices, lounges, etc. were included in the idea of a complete gym, according to their importance.

An Olympic size swimming pool was the second improvement listed. Unlike the present swimming pool, which was added as an after thought after the gym was under construction, a new pool needs to be planned along with new physical facilities.

Several week-ends ago at the

student-faculty retreat, it was reported that before any additions to athletic facilities be considered, other buildings would need attention. Among them was the building of a new women's gymnasium.

Now that interest in new women's facilities is beginning to rise, it is hoped a new gymnasium will be constructed for women.

Harriers To Compete At Homecoming

This past week the Vandal Cross Country Track squad lost its season opener to Washington State and barely squeezed past Whitworth. The scores were 19, 49, and 52 respectively. In cross country track the lowest number of points wins.

Coach Doug McFarlane had very little to say about the meet itself except that the loss of Dick Douglas through a pulled muscle early in the race hurt the team effort.

Top performers for the meet were Paul Hendon, who came in fifth, and Nick Wetter.

The squad will race against the same schools as before but on home grounds and over a longer distance. The race will start at half time of the Homecoming game from the fifty yard line in Neale Stadium on Saturday and will go around the golf course and end back in the stadium.

The Vandals have a better chance as this is a longer race and on more familiar territory, McFarlane said. Also it will be much more of an up and down race and the terrific endurance of Paul Hendon, who runs a 14.02 three mile race, will count heavily in favor of the team.

Coach McFarlane wishes to tell any prospect for the regular track team that he should start running now, and that if he can run a mile or three miles in or around the school record that he can be sure of a spot on the team.

Five Veterans Back To Ski

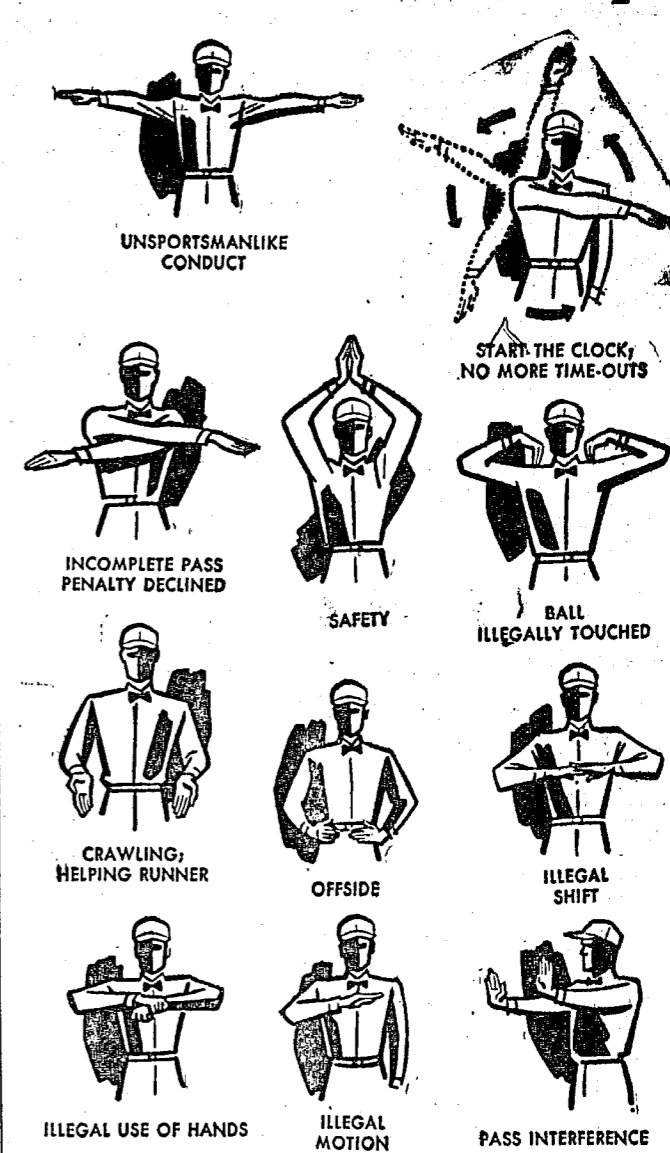
The Vandal Ski team will have five returning lettermen this season making the team 25 strong. Vandal ski coach Meril Conitz said Monday. The five returning lettermen are Bob Trent, first man alpine; Rolf Prydz, nordic; Steve Kimball, alpine; Per Jessen, nordic; and Eric Friis, four-way.

Some freshmen competing on the team are John Seetin, an Olympic candidate last year, alpine; Berry Boydston, alpine, and Dave Barlow, alpine. Helping in the nordic events will be Jon Ostbo, Nils Jensen, and Kjell Christophersen, all students from Norway.

Starting Lineups

PACIFIC		IDAHO		Weight
No.	Pos. No.	Pos. No.		
83	John Rodgers, 195	LE 86	Vern Leyde	180
70	Don Shackelford, 245	LT 77	Jim Moran	255
60	Bob Scardina, 205	LG 66	Don Matthews	211
52	Paul Latzke, 225	C 53	Rick Fancher	200
66	Bob Irwin, 215	RG 68	Denny Almquist	217
75	Dick Kirby, 280	RT 70	Max Leetzow	235
86	Buck DelNero	RE 81	Mike Mayne	225
15	Ernie Zermeno	QB 16	Gary Mires	190
30	Cameron Doyel, 185	LHB 42	Rich Naccarato	170
25	Jack Reed, 205	RHWB 27	Bill Scott	170
33	Smiley Verduzco, 185	FB 38	Galen Rogers	199

For Women Only!



FOR SALE: Italian soprano, 120 bass, man-size mother-of-pearl ACCORDIAN. Excellent condition. Must sacrifice. Phone TU 2-8923 after 2:00 p.m. or see at 324 North Main, Moscow.

English Leather

America's only all-purpose men's lotion



after shave after shower after hours



4 ounce - \$2.00
8 ounce - \$3.50
16 ounce - \$6.50
All in handsome Redwood Box

MOSCOW FLORISTS AND GIFTS
112 W. 6th

MOST OF YOUR LIFE IS SPENT IN YOUR SHOES.
SHOE REPAIRING
KEEP THEM LOOKING LIKE NEW.
STEWART'S SHOE SHOP
509 1/2 South Main

HUTCHISON'S FOR FINE PROFESSIONAL PORTRAITS OF CHARM AND DISTINCTION

MAKE YOUR APPOINTMENT NOW FOR YOUR GEM PORTRAIT

HUTCHISON'S

TU 2-7261

"Where Quality Goes In—Before the Name Goes On"

PIC-A-BANANA SPLIT

Pay From 1c-49c

ENJOY OUR COMPLETE FOUNTAIN SERVICE HOME-MADE ICE CREAM Made Fresh Daily

ROGERS ICE CREAM

ACROSS FROM SAFEWAY

Featuring Hunter's Famous CARAMELED APPLES
At The Game And At The Shop
HUNTER'S CANDY SHOP

123 E. 3rd

TU 3-3031

THE BELL TELEPHONE COMPANIES SALUTE: KEN PARKER

When Ken Parker (B.S.E.E., 1961) joined Pacific Northwest Bell he became part of a special services engineering group in the Seattle office. Here was an opportunity for him to learn about the unique services of telephony.

With learning comes responsibility, and Ken was given his share right from the start. He was accountable for the transmission design of all loudspeaker services. Often, he was teamed with a marketing salesman, who would call on him to recommend the right system while with a customer.

Ken went on to bigger and more complicated communications in the special services group. On a subsequent assignment he was responsible for the transmission design of many intercity and interstate services. His decisions were far-reaching and affected many customers.

Ken Parker, like many young engineers, is impatient to make things happen for his company and himself. There are few places where such restlessness is more welcomed or rewarded than in the fast-growing telephone business.



BELL TELEPHONE COMPANIES



TELEPHONE MAN-OF-THE-MONTH

Idaho Vandals Face Pacific's Tigers In Homecoming Tilt

Tigers To Outweigh Idaho, Reports Coach Anderson

The Idaho Vandals will attempt to please a University Homecoming crowd by running their record to 3-2 when they take on the big University of Pacific Tigers tomorrow at Neale Stadium. Game time is 1:30 p.m.

The recent University of Pacific loss, 29-7, at the hands of Fresno State, Idaho's first victim, is hardly indicative of the Tigers' strength, according to a scouting report by Wayne Anderson.

Anderson says the Tigers are big and will outweigh the Vandals in both the line and the backfield. He does not believe that they have more speed than the Idaho squad. He says they are a team that you don't want to get behind, because they can play ball control and grind out the yardage on the ground.

They Pass Too
Although not an exceptionally strong passing team, Pacific threw about fifty per cent of the time in their opening games, and used this to set up their ground game, which has been steadily improving.

In the series with Idaho, which started in 1953, the Vandals have won six of seven games with the seventh ending in a tie. This will give the Vandals an added incentive in the game tomorrow.

Changes Made
Coach Dee Andros has done some shifting in the starting lineup in preparation for tomorrow's tilt. Junior, Rick Fancher, who had a good day against Oregon last week will get the starting call at center, and Jerry Campbell has taken over the starting position at left guard.

With Max Leetzow still nursing a shoulder injury, Joe Dohson is holding down the first spot at the tackle position. Bill Scott, who had a great day against the Ducks, will join Gary Mires, Rich Naccarato, and Galen Rogers in the starting backfield.

Andros is a bit puzzled as to the record posted by the Tigers, insofar as UOP was able to down a favored WSU Cougar squad last year, and have yet to post a victory this season. In his words, "All I can figure is that Pacific is beating itself with mistakes, because this is a big, strong, powerful football

team. They can hit you and hit you hard."

There had been some feeling about the Idaho squad getting a bit over-confident and starting to compare scores against the Fresno club. Coach Andros however, feels that this year's ballclub is capable of getting up for any game and thinks they realize that the Tigers are a better team than has been indicated thus far this year.

Andros stated that he was looking for a rough game, but felt if the Vandals played hard, and as well as last week against Oregon, only without the mistakes, that everyone would have a happy Homecoming.

Teams
PACIFIC—10 Howie Campbell, QB; Don Stagnaro, QB; 14 Tom Strain, QB; 17 Eddie Simas, HB; 21 Mike Sears, HB; 23 LeRoy Harris, HB; 24 Mike Hair, FB; 25 Jack Reed, HB; 30 Cameron Doyel, HB; 33 Smiley Verdugo, FB; 39 Ken Hyatt, HB; 41 Ron Burns, HB; 44 John Billeci, FB; 52 Paul Latzke, C; 54 Mark Noonan, C; 60 Bob Scardina, G; 61 Steve Hinkle, G; 62, John Phillips, G; 63 Mike Damsgaard, T; 64 Terry Marshall, G; 65 Jim Busher, G; 66 Bob Irwin, G; 67 Ross Shoemaker; 68 Dick Heidelberg, G; 70 Don Shackelford, T; 71 Vern Garrison, T; 73 Simon Molini, T; 75 Dick Kirby, T; 77 Frank Renzi, T; 80 Jim Henderson, E; 82 Russ Pinching, E; 83 John Rodgers, E; 84 Bill Sandeman, E; 86 Buck DelNero, E; 88 John Balla, E.

IDAHO — 11 Gary Peters, QB; 14 Gary Gagnon, QB; 16 Gary Mires, QB; 18 Mike Monahan, QB; 20 Larry Strohmeyer; 24 Mike Whiles, WB; 27 Bill Scott, WB; 34 Mickey Rice, FB; 35 Dick Litzinger, FB; 36 Dale Meyer, FB; 37 Bob Bartlett, WB; 38 Galen Rogers, FB; 39 Alex Klidzjes, FB; 40 Tom Morris, HB; 42 Rich Naccarato, HB; 43 Charles Jenkins, FB; 46 Mike Jordan, HB; 51 Steve Buratto, C; 53 Rick Fancher, C; 57 John Siath, C; 61 Jerry Campbell, G; 62 Dave Elder, G; 63 Cecil Meiser, E; 65 Dave Triplett, G; 66 Don Matthews, G; 67 Bob Ruby, G; 68 Denny Alquist; 71 Stan Buratto, T; 72 John Boisen, T; 73 Cecil Patterson, T; 74 Max Leetzow, T; 75 Ellery Brown, T; 77 Jim Moran, T; 79 Joe Dohson, T; 80 Ed Monahan, E; 81 Mike Mayne, E; 82 Steve Jones, E; 83 Bob Bassett, E; 85 Hal Osborne, E; 87 Larry McGuffie, E; 88 Joe Chapman, E; 89 John Whitney, E.

Two freshmen from Spokane are playing with athletic scholarships. These are Jim Kromer and Keith Ries. Both Kromer and Ries alternated number one-man at West Valley High School in Spokane. The Vandals also picked up a transfer tennis player from Idaho State, Bill Evans. Another freshman is Terry Scott from Lewiston. Reynolds said that Scott and his doubles partner won the Inland Empire Doubles championship last year.

Those returning from last year are Scott Rustay, Gene Prescott, and Bill Van Orman. They will also be joined by sophomore Lee Takahashi, who was unable to play for most of the tennis season last year.

"The team has been turning out for the past three weeks," Reynolds said, "and I would say that we are considerably stronger than last year and should enjoy a good year."



LINEMAN OF THE WEEK — Jerry Campbell, 6 feet, 199 pound guard, from Spokane, was awarded the Lineman of the Week honor at the Vandal Booster meeting Tuesday night. Campbell was chosen because of his fine playing against Oregon last weekend. The Vandals were defeated 41-21.

Goddard Has Team In First Full Workout

Basketball coach Jim Goddard is a man that works in getting right to work. He started his first basketball practice at the University of Idaho Tuesday with a full-game scrimmage.

"The best way to find out who's in shape and who can play the game is to put the entire team in a game situation," the new Vandal mentor said. "We've got 22 men out for the varsity and I have seen only three or four of them in actual competition." (As head coach at Lewis and Clark College in Portland last season Goddard saw the Vandals in a couple of Far West Classic appearances.)

Five lettermen were on hand for the Vandals, but only senior forward Tom Whitfield was a regular starter last season. Chuck (the truck) Kozak from Seattle is the other letterman forward.

Tom Moreland, 6-4 junior from Coeur d'Alene, is the letterman center, but he spent last season behind the departed Gus Johnson. The veteran guards — Terry Henson from Kent, Wash., and Bill Mattis from Coeur d'Alene — were considered the best second string guards in the Northwest last season, but only time will tell if they can make the jump up to the varsity starting level.

Red Shirts
Goddard picked up a trio of red-shirts from former coach Joe Cipriano. Larry Rasmussen is a 6-9 center from Cannon Beach, Ore., Ed Tollefson is a 6-6 guard from Portland, Ore., and Jay Anderson is a 6-3 forward from Eden, Idaho.

Also returning from last year's squad are guards Fred Crowell from Anacortes, Wash., Don Sower from Coldwater, O., and Nelson Levias from Seattle.

Goddard brought in Bos Emehiser, a guard from Coeur d'Alene and North Idaho junior College, and a trio of newcomers have joined the ranks this fall from the campus. Darold Klude, junior from Kamiah; Jay Ney, a junior from Aberdeen, and M. E. Ross, a squad member two seasons ago from Sierra, Calif.

Up from the frosh are Mike Everett from Mt. Home, Mike Lamb from Lewiston, and Larry Sappington from Kellogg, all guards; Ed Haskins from St. Maries, Jim McElroy from Seattle, and Jim Wohrer from Geneva, Ill.; all forwards, and center Ron Muskopf from Placerville, Calif.

Tennis Future Looks Bright

The Vandal tennis team is 15 members strong this year, reports new Tennis Coach Marsh Reynolds. "The outlook for the future games in the Spring is brighter than it has been for Idaho in the years past," he said.

Two freshmen from Spokane are playing with athletic scholarships. These are Jim Kromer and Keith Ries. Both Kromer and Ries alternated number one-man at West Valley High School in Spokane. The Vandals also picked up a transfer tennis player from Idaho State, Bill Evans. Another freshman is Terry Scott from Lewiston. Reynolds said that Scott and his doubles partner won the Inland Empire Doubles championship last year.

Those returning from last year are Scott Rustay, Gene Prescott, and Bill Van Orman. They will also be joined by sophomore Lee Takahashi, who was unable to play for most of the tennis season last year.

"The team has been turning out for the past three weeks," Reynolds said, "and I would say that we are considerably stronger than last year and should enjoy a good year."

Vandals This Season

TEAM STATISTICS	Idaho	Opp.
Rushing	182	173
Times Carried	775	764
Yards Gained	108	108
Yards Lost	667	656
Net Yards	3.7	3.7
Average	3.7	3.7
Passing	56	78
Pass Attempt	25	41
Pass Complete	5	4
Had Intercept	262	501
Net Gain	446	526
Pct.		
Punting	17	14
Number	693	454
Yards	40.6	32.4
Average	3.8	5.2
Total Offense	236	251
Plays	903	1267
Average	3.9	5.2
First Downs	34	34
Rushing	13	13
Passing	13	30
Penalty	7	1
Total	54	65
Penalty-Yards	17-155	18-186
Fumbles-Lost	12-7	15-9

Scores:
Idaho 32, Fresno State 8
Idaho 10, Utah 9
Idaho 0, Missouri 24
Idaho 21, Oregon 41

Kenworthy

Tonight Thru Saturday—7-9



Sunday Thru Tuesday—7-9

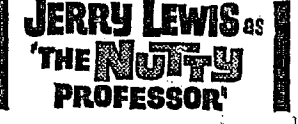


NUART

Tonight Thru Saturday At 7 and 9:35



Sunday Thru Tuesday—7-9



AUDIAN PULLMAN

Tonight Thru Saturday—7-9

"TOYS IN THE ATTIC"

Sunday—All Next Week At 7 and 9

"DAVID AND LISA"

CORDOVA PULLMAN

Tonight Thru Saturday—7-9

"HUD"

Sunday—All Next Week At 7 and 9

"FOR LOVE OR MONEY"

BOOKSTORE JOINS
The University Bookstore became a member of the Western College Bookstore Association in 1938.

WELCOME TO THE TIP TOP CAFE & DRIVE IN
UNDER NEW MANAGEMENT
227 E. 3rd Orders To Go TU 2-1242

Wilson Sporting Goods

- BASKETBALLS
- FOOTBALLS
- TABLE TENNIS SETS
- GOLF SUPPLIES

CONVERSE SHOES AND LOW CUT OXFORDS
Both in Black and White

HUNTING SUPPLIES
GUNS, AMMO, MAPS, TAGS, LICENSES

WARD PAINT & HARDWARE
404 South Main

YOUNG MAN "authoritative" is the word for CRICKETEER®

Proceed into Fall with the assurance that only Cricketeer's Alumni Worsteds suits can give. The fit, natural... and just trim enough in the authoritative Cricketeer manner. Available in all the classic patterns in colors just a shade lighter this year. At your best, vested.

\$55.00 to \$69.95

Take One of Our Famous Pendleton Robes
to the game Saturday —100% Virgin Wool in a Foam-Padded Cushion Bag \$14.95 & \$17.95

CREIGHTONS, INC.
CLOTHIERS SINCE 1890

WATCH FOR THE SHOPPER!

Frosh Look Good—Riley

Bud Riley, coach of the Vandal Babes football squad had a great deal to say Thursday about the promising young men that have turned out for the season, and made the 1963 frosh team. He called them hard working gentlemen with a good attitude towards the future. Although he wouldn't mention any names he hinted that several of the boys showed remarkable talent and great promise.

The traveling squad consists of 30 boys who come from all over the Northwest, and even one from Florida. Jerry Ahlin, Rodney Bohman, Tim Lavens, Sam Johnson, Bill Bufton, Don Strate, John S. Roberts, Ron Porter, Ray McDonald, and John Weber. These are only a few of those who will make the trip one week from Saturday to Seattle to open the season.

Coach Riley also said that quarterback Bill Gianjuinto from San Francisco had broken his ankle in practice and would be out for the remainder of the season. He also said that there had been some unjust remarks concerning his cutting of the team. Riley said that 42 players drew uniforms and of those two are out with injuries and ten have quit. "Those ten quit of their own free will and were not cut," he added.

WRA TENNIS
The WRA tennis tournament has begun. The girls playing in the tournament are asked to check with their house representatives to see who their opponents for the matches are.

VARSITY THEATRE
MOSCOW-PULLMAN HIGHWAY
In response to many requests we are reshowing "PEYTON PLACE"—in color
Lana Turner — Diana Varsi
"RETURN TO PEYTON PLACE"—in color
Jeff Chandler — Carol Lindley
Plus Two (2) Roadrunner Cartoons
Only Peyton Place and the Two Road Runner Cartoons will be shown Sunday night. Show starts at 7:30 p.m.

Sports

Jim Faucher's behind the scoreboard

What is Homecoming? This term, defined by Webster's New World Dictionary, is: "A coming or returning to one's home, or in many colleges and universities, an annual celebration attended by alumni." This definition fits tomorrow's Homecoming to a tee.

In relation to the football team, it will be a real homecoming. They have lost their last two games on the road, and it will be like "manna from heaven" for them to get their feet on the ol' sod of Neale Stadium. The Vandals have faced two rough teams, Missouri and Oregon, and Vandal Coach Dee Andros seems to think that the game tomorrow may not be easy for Idaho. Even though the Tigers from the University of the Pacific were beaten by Fresno State last weekend, any team can get keyed up for a game and put on a very good show.

Many living groups on this campus are preparing skits, floats, signs on posters, posters on sign, signs on signs, and even signs on their living groups for the weekend. Why? Because there may be a trophy involved in the winning process. I wonder if there will be a trophy for the girl having the best pair of pajamas in the annual Pajama Parade. All of these things build up spirit for the real test — the football game itself.

Ah, yes, and along with the football game come the alumni. These men and women are just like you and I, except for one thing, they have their degrees. "You mean to say that they're coming back?" They're coming back to see you, the school, the campus, and themselves of a few years ago. The one, and perhaps the most important, thing that can be shown to them is the spirit that does exist at this school.

Here is one thing that trophies won't be given out for, the spirit at the game tomorrow. A full-house is expected for the game, but a full-house that sounds like a haunted house might as well be torn down. The alumni rightfully expect a lot of noise and foot stompin' for the team, and they should get it.

The spirit shown at the Fresno State game wasn't poor, it was miserable, and the Boise game wasn't much better. The last two times the Vandals played, on the road, the stands were packed — with cheering fans, I might add.

What does it take to build up spirit at a school like Idaho? Does it take floats, skits, PJ parades, signs and alumni? Does it take a group of pretty girls out in front of the stands in yellow skirts? Maybe it takes a little "snort" from the paper cup filled with a carbonated beverage and etc. One thing that it certainly takes is motivation, in common language—DRIVE!

People can talk and talk about the lack of spirit, and I can type and type on this typewriter until the keys are gone, but this won't build up this drive. This has to come from you. You have to be proud of your school and proud of your team, and show it, and it isn't too hard, either.

Let's show the alumni, the pompon girls, the team, and ourselves that we can do it. Make it an "Annual celebration attended by alumni" that will never be forgotten.

ERASE WITHOUT A TRACE ON EATON'S CORRASABLE BOND

Don't meet your Waterloo at the typewriter—perfectly typed papers begin with Corrasable! You can rub out typing errors with just an ordinary pencil eraser. It's that simple to erase without a trace on Corrasable. Saves time, temper, and money!

Your choice of Corrasable in light, medium, heavy weights and Onion Skin in handy 100-sheet packets and 500-sheet boxes. Only Eaton makes Corrasable.

A Berkshire Typewriter Paper
EATON PAPER CORPORATION PITTSFIELD, MASS.

We all make mistakes...

ERASE WITHOUT A TRACE ON EATON'S CORRASABLE BOND

Don't meet your Waterloo at the typewriter—perfectly typed papers begin with Corrasable! You can rub out typing errors with just an ordinary pencil eraser. It's that simple to erase without a trace on Corrasable. Saves time, temper, and money!

Your choice of Corrasable in light, medium, heavy weights and Onion Skin in handy 100-sheet packets and 500-sheet boxes. Only Eaton makes Corrasable.

A Berkshire Typewriter Paper
EATON PAPER CORPORATION PITTSFIELD, MASS.

ERASE WITHOUT A TRACE ON EATON'S CORRASABLE BOND

Don't meet your Waterloo at the typewriter—perfectly typed papers begin with Corrasable! You can rub out typing errors with just an ordinary pencil eraser. It's that simple to erase without a trace on Corrasable. Saves time, temper, and money!

Your choice of Corrasable in light, medium, heavy weights and Onion Skin in handy 100-sheet packets and 500-sheet boxes. Only Eaton makes Corrasable.

A Berkshire Typewriter Paper
EATON PAPER CORPORATION PITTSFIELD, MASS.

ERASE WITHOUT A TRACE ON EATON'S CORRASABLE BOND

Don't meet your Waterloo at the typewriter—perfectly typed papers begin with Corrasable! You can rub out typing errors with just an ordinary pencil eraser. It's that simple to erase without a trace on Corrasable. Saves time, temper, and money!

Your choice of Corrasable in light, medium, heavy weights and Onion Skin in handy 100-sheet packets and 500-sheet boxes. Only Eaton makes Corrasable.

A Berkshire Typewriter Paper
EATON PAPER CORPORATION PITTSFIELD, MASS.

ERASE WITHOUT A TRACE ON EATON'S CORRASABLE BOND

Don't meet your Waterloo at the typewriter—perfectly typed papers begin with Corrasable! You can rub out typing errors with just an ordinary pencil eraser. It's that simple to erase without a trace on Corrasable. Saves time, temper, and money!

Your choice of Corrasable in light, medium, heavy weights and Onion Skin in handy 100-sheet packets and 500-sheet boxes. Only Eaton makes Corrasable.

A Berkshire Typewriter Paper
EATON PAPER CORPORATION PITTSFIELD, MASS.

ERASE WITHOUT A TRACE ON EATON'S CORRASABLE BOND

Don't meet your Waterloo at the typewriter—perfectly typed papers begin with Corrasable! You can rub out typing errors with just an ordinary pencil eraser. It's that simple to erase without a trace on Corrasable. Saves time, temper, and money!

Your choice of Corrasable in light, medium, heavy weights and Onion Skin in handy 100-sheet packets and 500-sheet boxes. Only Eaton makes Corrasable.

A Berkshire Typewriter Paper
EATON PAPER CORPORATION PITTSFIELD, MASS.

ERASE WITHOUT A TRACE ON EATON'S CORRASABLE BOND

Don't meet your Waterloo at the typewriter—perfectly typed papers begin with Corrasable! You can rub out typing errors with just an ordinary pencil eraser. It's that simple to erase without a trace on Corrasable. Saves time, temper, and money!

Your choice of Corrasable in light, medium, heavy weights and Onion Skin in handy 100-sheet packets and 500-sheet boxes. Only Eaton makes Corrasable.

A Berkshire Typewriter Paper
EATON PAPER CORPORATION PITTSFIELD, MASS.