

The Idaho Argonaut

Member Associated Collegiate Press

Official publication of the Associated Students of the University of Idaho, issued every Tuesday and Friday of the college year. Entered as second class matter at the post office at Moscow, Idaho.

Editor: Kip Peterson
Associate Editor: Karen Smith
Managing Editor: Fred Freeman
News Editor: Janice Craig, Jim Farnher
Social Editor: Jamie Watts
Assistant Social Editors: Linda Mitchell, Dianne Weminger
Sports Editor: Mark Brown

The Golden Fleece

By Jason

Idaho's newly literate don academic garb each spring, doff it three hours later, and leave.

Problem? Keeping the talented, the literate, the productive fledgling leaders here. A virtual gift of education has been given. They say thanks, briefly if at all, then go. They forget, even while they're taking their gift, that it was given; they forget that their's is probably the least expensive quality education anywhere in the Northwest.

They forget, and leave. And even those who remember leave.

Why? Perhaps it's lack of stimulation, of challenge. Perhaps they see advancement in ready-made professional environments. Perhaps it's never been made clear that there is challenge here, that the ready-made may also be ready-closed to newcomers.

Here youth has a unique chance to pick its spot and grow with the state. Here youth has opportunity to decide what needs doing, then utilize its own ability to do it. Here there's no waiting for someone else to do what needs doing — there aren't enough to see what needs doing, let alone to do it.

What spark is lacking to fire Idaho youth?

Older people return here to retire. Babies aren't finicky about being born here in ever-increasing numbers. Yet the most productive age group declines as a percentage of Idaho's population.

As the vital age group declines, hope declines for retaining more youth. As fewer remain, fewer have friends to remain with — and they follow their friends — out.

To retain more of these, and persuade still more to stay with their friends, Perry Swisher, a state senator and member of the younger group, suggests that Idaho's hope for retaining youth is to spark a spirit of public concern in them — to impress them with how badly they are needed here.

And they are needed — the Legislature needs rejuvenation, industry has top-level positions for which it often recruits out-of-state men because it is unable to find enough qualified in-state men.

Why leave? Here is where the need is — and here is where advancement with fewer ulcers is — and here is where beautiful country beckons the rush-worn.

Compliment for the day: To the administration of Washington State University for slapping the wrists of a newspaper which needed chastizing.



Bulldozer Makes House A Mess

Another step in improving the entrances to the University of Idaho campus was taken this week when a bulldozer made kindling of an old frame house and cleared the lot on the corner of Sweet and Deakin Avenues, opposite the Sigma Alpha Epsilon fraternity house.

The dilapidated building which faded from the scene in three days was a pioneer Moscow residence. It was located on property now owned by the University. As the house was no longer fit to live in, it was decided to raze it.

Esox Fables

By Bob Banashek

Sometimes you give an award just to glorify the donor, and sometimes it is definitely deserved. I feel that the latter is the case with the award that I wish to give. It shall be called Esox's "Birdy of the Week."

Because I had a great deal of trouble finding one worthy person as the recipient of my award, and for that matter one worthy group, I have deemed it necessary to make a dual presentation this time. There are two worthy groups: I shall give one to the Young Republicans and the other to the Young Democrats, who in the past couple of weeks worked tirelessly, collectively and dedicatedly for their respective self-glorification at the Idaho Mock Political Convention. If one considers all the semantic variations of the word "mock" they did more to make the convention that way than anyone else concerned.

Esox Bitter
Ah, but Esox is bitter! Indeed, I am mad that my sterling champion of justice and the rights of Man, Governor Wallace, did not win.

The way I figure it is that I went into the whole thing as an actor, and all my lines came out of the little brown envelopes from the state central committees. In my particular case my role was to think pretty much like the people of Mississippi.

I had nothing at stake. It is better said as his: "No likely end could bring them loss. Nor make them happier than before."

What I failed to realize was that there were others who had just as much at stake by way of their PRESTIGE. Therefore, their lines came from a much more pressing source; their EGO.

Disseminated Inspirations
They disseminated their inspirations in pre-convention and mid-convention caucuses and while they were perpetrating their ambitions they managed to completely forget about the fact that a lot of people came just to speak their lines and see what would happen.

My merits as a politician have been proven dubious in the past few weeks, but it doesn't really take too much political acumen, and maybe I got more awareness to wonder why a deep South state would cast all of its votes for a New England Republican... who isn't even a candidate yet. The South shed a lot of blood over an issue of pride and I fail to see how a presumptuous group of college students can give such deference to that fact.

Preordained
The fact is, these things were all preordained by higher powers than Esox, but herein I give them their necessary recognition.

Of course I did go for an education, and maybe I got more of one than I had bargained for. I learned all about the "Moles" who run the show from the underground and are blind to the sincerity of intention of any one else involved. It's a shame that even a Mock Convention can't come through untainted by them.

Perhaps the delegations that left the floor were acting "childishly." Children do have a naive way of expecting the truth of whatever is told to them.

Just for the record, the YRs can have a bigger birdy than the YDs... because they won. And winning is, after all, the most important thing.

Who's Teaching Teachers How?
"How to Teach versus What to Teach: Are Public School Teachers Properly Prepared?" is the topic of one of a series of panel discussions sponsored by the American Association of University Professors.

The discussion will be Thursday at 8 p.m. in Home Economics Building room 6. Panelists are Dr. John Green, professor; Dr. J. Vail Foy, associate professor of English; and Dr. Max E. Fletcher, associate professor of economics.

KUOI CHIEF NAMED
Bob Jorgenson, Upham, has recently been appointed Chief Engineer of KUOI, campus radio station. Jorgenson succeeds Phil Wenstrand, Gault, who resigned because of academic reasons.

Why No Jazz?

Dear Jason:
Thank you for allowing me some space to tell just what happened to the Jazz in the Bucket Committee.

As you know, we have no budget and must rely on band leaders coming forth and offering their services free. Few have come forth this year, few have responded to arm twisting even. Perhaps this is due to the few number of jazz groups on campus. If we have overlooked anybody, if there is anybody who would like to play on a Saturday afternoon, give me a call (TU 3-4051).

Oh yes, we have tentatively planned the next best thing to a Jazz concert, a rock and roll concert. If we can get a trophy out of the Activities Council it might be a success.

Sincerely
J. Skip Botsford
Off-Campus

Heard A Little Fable

Dear Jason:
I heard a little fable the other day and I thought that you might like to hear it also. It goes:

Once upon a time there was a tree which bore fruit only once every four years. Many people knew of this tree and liked the fruit, but only two people could make the journey to the tree at the time when it bore fruit.

All of the other people would see that they were friends of one of the men who would travel to the tree to get the fruit, as they then would get a piece of the fruit.

The only problem was that the tree was very tall.

As a result everybody wanted to back the tallest person. Then when they were jumping up to get the fruit the taller one would have a better chance of getting the fruit.

This year, however, both were of about the same height, so one of them decided to better his chances with a few deals to gain more backers. He made plans to get the fruit on the first jump without giving the other person a fair chance.

When he told his backers his plans some of the fairer ones decided that this was a little too underhanded and switched sides.

As a result when the two men reached the tree the second man, a Mister Gop, was actually a little stronger than his opponent had thought that he would be. As a result he reached the fruit on his second jump and prepared to take it home to his friends.

His opponent left the tree very angry and as he left he was heard to say, "The fruit was probably sour anyway."

It is not much of a fable but I believe that it has a moral. Even if some people do not realize the moral I am sure that most people will see its practical side.

As the chairman of the Draft Lodge Committee I would like to thank Merrily Fruententich and Sara Lowell for their time in our recent campaign.

Thank you,
Donald Davis,
Massachusetts delegation

Mock Convention Complimented

Dear Jason:
This letter is directed to the minority of students, Republicans and Democrats, who became disenchanted with the Mock Political Convention. The convention needs to be placed in proper perspective.

It was a tremendously successful convention, when viewed in the light of an educational venture. I say that even though I was a losing candidate for permanent chairman of the convention and my favored candidate, Lyndon B. Johnson, was not nominated.

First of all, I wish to congratulate Linda Bithell on her impartiality as chairman. Considering the rough time the delegates gave her, she handled the convention quite well.

To you who say she did not, I ask: could you have done much better?

Now the convention was criticized on the ground that certain states were allowed to vote in a manner which they might not ordinarily vote. To that I say that such a circumstance was inevitable since the strong personal convictions of the delegates were bound to enter in.

Moreover, no valid basis exists for determining whether a vote of a state is absolutely out of line. Why? Because, in any state, exceptions to the rule can be found.

Furthermore, I would contend that the convention was the success it was simply because the delegates did allow their convictions to sway them.

Such a happening is the very

Dear Jason

thing that gave the convention its realistic atmosphere. Delegates and delegations were truly fighting and bargaining as though they were in a real convention. Of what benefit would the convention have been had everyone meekly filed in, sedately voted according to some preordained formula, and then quietly filed back out?

In addition, there are those who believe that it was a farce since the Republicans hung together and got the nomination for their most favored candidates. All I can say is that that is the way that conventions are won in the real world. The Republicans not only outnumbered us Democrats. They outorganized us!

In summation, everything about the convention was realistic. Most delegations did somewhat accurately represent their states. The normal disorganization and hubbub of a true national convention existed. An undercurrent of suspense electrified the air a good deal of the time as delegates attempted trades, hurriedly discussed strategy, and made last ditch efforts to gain their objectives.

Last but not least. Wasn't it nice to watch Goldwater go down the drain with only 46 delegates behind him? That action alone reaffirmed my faith in the educational processes of this University.

Bryon K. Meredith
Off Campus

YDs Lambaste GOP Faction

Dear Jason:
The fatuousness of Rich Hall's accusation of March 13 that we Democrats were using "a little possible influence" to push good "Republican states" into the Democratic column during the recent Mock Convention should now be obvious even to him.

Another accusation (not made by Hall) that Lloyd Walker, state Democratic chairman, offered to take the entire Oklahoma delegation to dinner if they voted Democratic is also false.

Actually, no member of our club tried to persuade a "Republican state" to vote predominantly Democratic, and our means of persuasion for other states were confined to presenting the facts. That Rich Hall's forces were not so inhibited is indicated by the remarkable voting pattern of the Louisiana delegation.

What happened to the YR president's pious declaration that "we will not turn this session into a political football game?"

Karen Stroschein wrote Tuesday that the 100 per cent Democratic vote of California delegation was unrealistic. I would agree if this in fact had happened. Actually, unit rule was in effect and a 51 per cent Democratic majority (less than Pat Brown's margin over Nixon) was sufficient to cast the California votes as a block.

The adoption of unit rule, of course, was meant to be a purely tactical decision by a delegation, not related to a state's voting pattern unless a majority could not be obtained.

I should add that New York was using open rule when it cast most of its votes for Lodge and the rest for Rockefeller. Now, if there are no Democrats in New York, how did Robert Wagner get elected mayor of New York City?

Jay Gaskill,
Young Democrats president

Open Letter To Political Babies

Dear Jason:
To the political cry-babies, convention walk-outs and the marble losers:

We would like to take this opportunity to state our views on the recent Mock Political Convention. To those individuals, we point out that it takes more than wearing cowboy boots, a half gallon hat and dark glasses to achieve the lesson of political education made available by this convention.

Let it be known that the victory we helped to attain was brought about through the organization, behind-the-scenes political bargaining, and hard work gladly given by our delegation and many others.

We would like to thank the Young Democrats, the Young Republicans, Mr. Walker, Mr. Swisher, the Moscow High School Pep Band, ICEP, Dr. Boyd A. Martin, and especially our charming convention chairman, Miss Linda Bithell, and all the others who put forth the time and energy which helped to make this convention the success that it was.

We feel that on the whole the convention was a success and

Barry Swanson,
President, TMA

Louisiana Group Justifies Vote

Dear Jason:
This letter is in reply to the several voiced comments of those who were unhappy with the Mock Political Convention. These unhappy people expressed disagreement on two matters. First the unrealistic voting of several states (Louisiana at the top of the list), and secondly, the partisan attitude of the chairman, Linda Bithell.

We will explain the voting of Louisiana, however, let us first relate how Louisiana did vote. On the first ballot Louisiana put its entire support behind Alabama's favorite son, Governor Wallace. On the second ballot Louisiana voted 10 votes for Johnson and 10 votes for Lodge. After the state following us had voted, Louisiana changed its vote to all 20 for Lodge.

It is true that Louisiana is 100 per cent Democratic in the state legislature, however, in 2 out of the last 3 Presidential elections, it has voted Republican. Today for a Presidential election Louisiana is split down the middle between the two parties.

Thus, the split in votes between Johnson and Lodge on the second ballot was evident and justified. Louisiana changed its vote to 100 per cent for Lodge as soon as it was obvious that Lodge had been elected. This is common in politics; a state will unite and "jump on the bandwagon" of the obvious winner.

Therefore, we of Louisiana feel entirely justified in our voting.

The second item we comment on is the fine job done by Linda Bithell, convention chairman. She carried out her job to the best of anyone's expectations.

Those who complain of the job she did, should note, Linda was elected almost without opposition. We of the convention as a whole elected her and we should stand behind her.

We, of Louisiana would also like to thank ICEP and others who helped with this convention. No one can say it was not a success. Everyone came away from it knowing more about conventions and politics, which was the actual purpose of the convention.

John Lukes,
Chairman, Louisiana Delegation

Riddle In Mystery Inside Enigma

Dear Jason:
"A riddle wrapped in a mystery inside an enigma." Although this description by Winston Churchill had nothing to do with the Idaho campus, I sometimes feel that it applies to the University's Townmen's Association, TMA.

Not only do those on campus know little or nothing of this organization but I often see off-campus students with completely blank expressions when TMA is mentioned.

There is really no mystery connected with TMA.

It simply consists of persons living off campus who desire some of the opportunities extended members of living groups. Our membership includes those interested in student organizations and activities, intramurals, and the various forms of campus politics.

Despite our obvious interior communications difficulties we manage, as a group, to take an active part in such things as the Homecoming parades, the Mock Political Convention and nearly all intramural sports.

As far as numbers go, our membership this semester is about 75 men. I feel that this is quite small considering the large number of students we have a chance to draw from. However, I don't want this letter to be construed as part of a membership drive but rather as a chance to introduce TMA to the Idaho on-campus students.

We, too, are students of UI and we're as interested in and as proud of our University as other students.

Barry Swanson,
President, TMA

SPRING SALE

Of Famous Name Mens

- SPORT COATS
- DRESS SLACKS
- DRESS SHIRTS

2 DAYS ONLY
MARCH 20th and 21st

Shop Now! Take your pick from these large groups of new spring merchandise.

BUY NOW FOR EASTER AND SAVE!

SPORTS JACKETS

Outstanding and unusual sport coat patterns that are as smart as can be. Large selection of fabric treatments in medium and dark color selections. Right weight for your comfort and good looks.

Reg. to \$39.95

SALE

\$30.00



Dress Shirts

Our greatest selection ever of short sleeve dress shirts. Broad-cloths, oxfords and dacron and cotton. Regular, button down and snap tab collars. Choose from white or stripes.

Regular \$3.98

SALE

\$3.00

or 2 for

\$5.75



SLACKS SALE

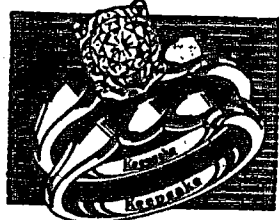
Famous name slacks tailored for use in a wide range of fabrics that include pure wools, dacrons and wool and all wool. Many styles to choose from. Plain or pleated fronts.

Regular to \$14.95

SALE \$10.00

Regular \$16.95

SALE \$12.00



Keepsake

BAFUS JEWELERS

515 South Main

Fly Vandals Fly

From Moscow to:—

Boise — \$23.68

Idaho Falls — \$40.96

Portland — \$22.68

Twin Falls — \$32.03

San Francisco — 63.21

NEELY'S TRAVEL SERVICE

PHONE 2-1282

Limousine All Flights

Agent for West Coast Airline

524 S. Main



DEPARTMENT STORE — MOSCOW

— Mens Store

Patronize Argonaut Advertisers

'Russian Ball,' Dinner Exchanges, Member Recognition Fill Week

Gamma Phi will lead the Easter Seal Drive this year. Activities during the last week centered around the "Russian Ball," new officers, initiates, dinner exchanges, and recognition of members.

KAPPA KAPPA GAMMA
New officers recently elected at Kappa Kappa Gamma are Sue Rasmuson, president; Joan Sorenson, vice president; Colleen Ward, efficiency; Marge Stunz, house manager; Julie Joslin, social chairman; Jana Smith, scholarship chairman; Julie Harper, public relations; Bonnie Johansen, rush chairman; Shirley Moore, pledge trainer; Suzanne Hensen, recording secretary; Ann Yenni, corresponding secretary; Anne Miller, marshal, and Zena Griffith, Panhellenic delegate.

TRI DELTA
Newly initiated into Theta Tau chapter of Delta Delta Delta are Kay Hostetter, Betty Kytönen, Roberta Timm, Sandy Ytreide, Sara Lovell, Camille Harris, Diane Boone, Cheryl Holmgren and Mary Jo James. Sara Lovell was presented with the chapter recognition ring for her outstanding work on the ICEP convention.

SAE
Sigma Alpha Epsilon initiated fifteen new members on March 8. Those initiated were Brent Miller, Dennis Jones, Joe McCollum, Dave Slusarenko, Bob Wise, Dennis Wilmore, Rick Carr, Tom Libby, Mark Pomeroy, Bill McCann, Sandy Emerson, Gary Nyberg, Dick Arndt.

LINDLEY
Lindley hosted a dinner exchange with Campbell Hall on March 11. St. Patrick's Day was observed with a dinner exchange with Pine Hall.

DELTA CHI
Second semester pledge class officers are Roy Nelson, president; Fred Otto, vice president; Don Harris, secretary; Rick Evans, social chairman; and Steve Hosack, song leader. Delta Chis held an all house dinner exchange with the Thetas Wednesday evening.

DELTA TAU DELTA
Delta Tau Delta held its annual "Russian Ball" Saturday. Guests spent the afternoon at a banquet and the evening in a casino.

DELTA GAMMA
Sixteen were recently initiated into Nu chapter of Delta Gamma.

Included were Dee Deb Blumhagen, Carole Crawford, Tena Gresky, Barbara Hanson, Stephanie Hall, Carole Johnson, Sandi La Dow, Diana Llewellyn, Mary Meyer, Jean Monroe, Jill Mooney, Peggy Reed, Grace Rieck, Patty Schafer, Nancy Shelman, and Kathy Worsley. Dee Deb Blumhagen received the pledge of the year award, and Jean Monroe was awarded a pin for scholastic achievement. Julie Severn was awarded the pin for outstanding service to chapter and University.

GAMMA PHI BETA
Mary Ellen Fairchild was chosen member of the month and Julie Pence was chosen pledge of the month for March at a recent dress dinner. Gamma Phi Beta is supervising the Easter Seal Drive which will be held Tuesday from 6:30 to 10:30 p.m. Pi Phi, Betas, Thetas, SAEs, Delts and ATOs will also be canvassing Moscow.

ALPHA GAMMA DELTA
The new pledge class officers are the following: Christy Magnuson, president; Judy Evans,

vice-president; Kathy Cassel, secretary; Gwen Hyke, treasurer; Ruth Williams, program chairman; Jane Cunningham, chaplain; Vicki Taylor, WRA representative; Jo Ann Lewis, Junior Panhellenic delegate; Ann Hernandez, activities chairman; Peggy Harrison, social chairman and song leader; and Sharon Herrett, scholarship chairman.

CAMPBELL HALL
Campbell Hall held a date fireside Sunday evening in the Coed Lounge. Wednesday evening guests at dress dinner were Mr. and Mrs. Robert F. Greene, director of dormitories; Miss Bernice Morin, food service director; Mr. and Mrs. Charles O. Decker, dean of students; Mr. and Mrs. Kenneth A. Dick, financial vice president; and Mr. and Mrs. J. W. Watts, business manager.

U-I To Observe Good Friday

Classes will be dismissed and offices closed at the University of Idaho from 1 to 5 p.m. Good Friday, March 27, President D. R. Theophilus said today. The president added that the closure, approved by the Executive Committee, follows the precedent of a number of years so that students and faculty and staff members will have opportunity to attend Good Friday services in their respective churches.

Rings N' Things

ENGAGEMENTS
RICHARD - McDERMID
FarmHouse serenaded Forney Hall Sunday in honor of the engagement of Bonnie Richard to John McDermid.

KLAAREN - FRENCH
The engagement of Sue Klaaren, Kappa, to Skip French, Phi Delta, was announced by Mary Ann Yoden and Bekki Hove last Friday.

STUNZ - SWENSON
A white candle entwined with lavender mums and a nosegay of garnet roses was passed at the Kappa house Friday evening.

Carol Rigsby and Mary Casey opened a series of packages to reveal the pin of Marge Stunz and Severt Swenson, Sigma Phi Epsilon from Central Michigan University now attending the University of Idaho.

3331 ENROLLMENT
In 1959 the enrollment at the University was 3,931 for the first semester.



Mmmmm . . . BOY! — Ron Peter, Fiji, and Camilla Good, Pi Phi, won the Frosh Week Legs Contest Wednesday in the SUB. (See story on page 1)

Regents Approve Gifts, Scholarships Of \$11,000

More than \$11,000 in gifts and scholarships to the University received formal Board of Regents approval, President D. R. Theophilus announced recently. Crown Zellerbach Corp. presented \$800 for two scholarships. R. M. Wade Foundation gave \$250 for an agricultural education scholarship. E. E. Coleman, Riddle, Ore., gave \$100 to be added to the Idaho Mining Memorial.

A worthy student in the College of Law will receive \$100 from the Lawyers Title Foundation, Richmond, Va. Presser Foundation, Philadelphia, gave a \$200 music scholarship. J. R. Simplot Co., Boise, presented \$700 for the Simplot scholarships.

Grants for scholarships included those from the Boise Civitan Club, \$100; Delta Delta Delta, Moscow, \$100; C. C. and Henrietta W. Anderson Foundation, Inc., Boise, \$1,000, and Idaho Ad Club Memorial Scholarship Fund, Moscow, \$3,000.

Marcus L. Arthur, off campus, received \$250 from the Nez Perce Tribal Executive committee. Northwest Metal Workers Union, Kellogg, gave a \$250 scholarship to Steven Moe, Lindley. Jean Willard, received a \$150 award from Polkatch Forests Foundation, Lewiston.

Sharing \$400 from the Fred and Emma Shirrod Trust are Marilyn Esser, Forney, Dawn

Challenge

We, the mighty Freshman class, of sound mind and strong body, being once again pestered by the jeers of the lowly class of '66, do hereby challenge those unworthy opponents to appear for their annual bath in Paradise Creek, Saturday morning at 10:30 a.m. We hope that they will not fret at being the only class in University history to be two-time losers.

Doug Finkelnburg
Freshman Class President

Acceptance

The Sophomore class accepts the meek challenge of those puny, undernourished, and justly belittled freshmen. At 10:30 sharp, a vast and mighty army of sophomores will be ready for all comers. We, the class of '66, although underdogs, will crash through to victory as did Cassius Clay for the championship, and as Governor Smylie will do for President.

Tom Bates, President
Harold Sassaki, Vice President

Five MUN Delegates To Attend WSU Confab

Five members of the University delegation of Model United Nations will attend the northern regional conference Saturday at Washington State University.

6 To Be Initiated AERho Pledges

Alpha Epsilon Rho, radio-TV honorary, will hold initiation for six Sunday at 3 p.m. in the University Radio-TV Building. Ben Goddard, Theta Chi; Paul Schneider, Lindey; Grayson Gibbs, Sigma Chi; Nikki McDonald, Kappa; Alvin Burgermeister, FarmHouse, and LeRoy Bassett, off campus, will be initiated.

AERho has entertained the Social Emulities film produced by the Communications Department in the national AERho annual Radio-TV Production Awards competition. Winners of the award will be announced at the National Convention April 21, 22 and 23 at the Roosevelt Hotel, Los Angeles.

Church News

CAMPUS CHRISTIAN CENTER
"City of the Bees," a film on bee communications, social government, and their life cycle will be presented by the Campus Christian Center on Sunday.

The film will be presented in the Borah Theater followed by a panel discussion and refreshments in the Galen room of the SUB.

WESTMINSTER FOUNDATION
Members of Westminster will attend the film "City of the Bees" on Sunday evening.

L. D. S.
As a part of the Lewiston Stake M-Man, Gleaner week activities, the MIA will hold a dinner dance this evening at the LDS institute. The dance will follow a spaghetti dinner with students from Washington State University.

UNITARIAN
J. Vail Foy, professor of English at the University of Idaho, will speak about the "Paradox of Puritanism: The Beginnings of American Individualism," at the Sunday meeting of the Moscow-Pullman Unitarian Fellowship. The meeting will be at 10:30 a.m. at 500 Oak Street in Pullman.

Channing Club will meet for discussion at 6:30 Sunday evening.

DSF
Disciple Student Fellowship will participate in viewing the film "City of the Bees," on Sunday evening with members of the 5C's.

LUCKY 13
In 1959 thirteen Idaho coeds vied for the title of Homecoming Queen.

Classifieds

50 x 10 Foot Expando Trailer. Lots of extras. \$400 down. Local bank financing. Phone LO 7-4951.

FOR

Maternity Wear
Children's Clothing
Babies Clothing
SHOP . . .



JACLYN'S
CHILDREN'S WEAR
MATERNITY WEAR

• Maternity
• Teens
• Childrens
• Infants

114 S. Main—TU 2-7551

McClusky Is Named Duke

Dave McClusky, Sigma Chi, was elected Duke of the Intercollegiate Knights last Tuesday. The other new officers include Warren Yeakle, Lambda Chi, scribe; Leonard Hart, Delta Chi, chancellor; Glen Atchley, Willis Sweet, recorder; Ken Paynter, Delta, expansion officer; Jerry Agenbrood, Delta Sig, court jester; Bob Dutton, Delta, page trainer; Larry Haskins, Sigma Chi, horrible executioner.

Outgoing officers included Arlen Marley, Upland, duke; Don Mottinger, SAE, scribe; Rick Faucher, Delta, chancellor; Jack Patrick, Delt, recorder; Jim Fields, FarmHouse, expansion officer; Jim Faucher, Sigma Chi, court jester; Joe Robinson, Phi Tau, page trainer; and Bob Hofmann, Delta Sig, horrible executioner.


THE University Shop
Colorado & "C" Street
WSU CAMPUS

SPECIAL SAVINGS ON JACK WINTER S-T-R-E-T-C-H PANTS

Regular \$14.98
Sizes 8 to 18
Many Colors

\$9.99

SALE 5 DAYS ONLY



THE University Shop
Colorado & "C" Street
WSU CAMPUS

For the newest and most complete selection of Spring Fabrics.

New Shipments Every Week

DOROTHY'S FABRICS

212 S. Main—Moscow

Ready For SPRING?

Time to have your spring clothes cleaned, pressed and freshened.

FREE PICK-UP AND DELIVERY.

SPOT SHOP

205 Washington

NOW OPEN

THE NEWEST AND FINEST DINING FACILITIES IN THE AREA

- ★ Smorgasbord—Fri. Nite—all you can eat for \$1.75
- ★ Dance Band Saturday Nite—No cover charge.
- ★ Banquet Rooms—For large or small groups.
- ★ Bowling Alleys—for open bowling seven nites a week.
- ★ Open Sundays at Noon.

CARTER'S CHARCOAL BROILER

GENESEE, IDAHO

Only 14 miles from Moscow on Lewiston Highway. Watch For The Big Sign.

SO SMART FOR SPORTS TIME



\$7.99

Gems
FOUNDED 1926

LARRY'S SHOES

It's the pleasure blend of this sport sofitie that makes it so significant. Smartly styled, buoyant, with a zest for frolics. In Antelope and Multi-colored Bone. Sizes 4 to 10.

210 S. Main TU 2-0781
MOSCOW

The term leather applies to the uppers only.

Your Choice Of Buffet

BY STUDENT REQUEST

Sunday, March 22 — 5-7 p.m.

Wanigan Room

STUDENT UNION BUILDING

<p>FEATURING BARON OF BEEF</p> <p>— And — VARIETY OF: Entree Salads Dressings Beverages Desserts</p> <p>FRENCH ROLLS & RYE BREAD</p> <p>ADULTS . . . \$1.85 STUDENTS . . . \$1.65</p>	<p>FEATURING ITALIAN SPAGHETTI</p> <p>— And — TOSSED SALAD GARLIC BREAD DRESSING BEVERAGE MOLDED JELLO</p> <p>95c</p>
--	---

ALL YOU CAN EAT
SPONSORED BY
BLUE BUCKET COMMITTEE

L&S Deans List Concluded

This list of names concluded the Dean's List of the College of Letters and Science. Students eligible for the list must have at least a 3.0 for the preceding semester.

Douglas Paul Pope, Upham; Lorraine Poulson, Tri Delta; Pat Pratt, Steel House; Barry Richard Fry, off campus; Myrick Whiting Pullen, III, Shoup; Karen Pynch, Kappa; Sue Rasmussen, Kappa; Dixie Jo Rasmussen, Houston; Larry Brian Rasmussen, SAE.

Carolyn Ravenscroft, Steel House; Marjorie Louise Raw, off campus; Alice Fulcher Reed, off campus; Bruce Milford Reed, Willis Sweet; Margaret Edna Reed, DG; Michael Duffy Reed, off campus; Virginia Reynolds, Steel House; Nancy Rice, Theta; Keith Michael Ries, McConnell; Marcus Eugene Robertson, off campus; Ronald Eugene Robertson, Chrisman; Cheryl Robinson, Alpha Chi; Ray Rocha, Beta; Nancy Louise Rose, Steel House; Jerr Ross, Alpha Phi; Stuart Charles Ross, Willis Sweet; Gail Naylor Rowe, off campus; John Robert Rowe, off campus; Maralee Rowland, Gamma Phi.

Bonnie Rude, Forney; Joan Rumpeltes, Pi Phi; Robert Clency St. Clair, Phi Delta; Larry Sall, Shoup; Carol Samson, Alpha Phi; Lynn Marie Sanderson, Alpha Phi; Gregory John Schade, Delta; David Michael Schauer, Gault; James Scheel, SAE.

Elizabeth Schimmel, Houston; Howard James Schoepflin, off campus; Kathy Schorzman, campus; Judith Schoepflin, off campus; Rick Schmacker, off campus; Diane Seubert, DG; Donna

Severn, DG; Julie Severn, DG; Wendell Ray Shank, off campus; Howard Milton Shaver, TKE.

Joann Sheffield, Steel House; Todd Donald Shelton, off campus; Angela Sherbenou, off campus; William Garrett Shisler, Delta Chi; Gay Russell Silha, off campus; Carol Simon, Alpha Phi; Judy Marlon Simon, Houston; Judith Sinclair, Forney.

Bill Siverly, Campus Club; Mike Skok, Pi Phi; Army Roger Skov, off campus; JoAnn Slade, Kappa; Richard Slaughter, Delta Sig; David Burton Slusarenko, SAE; Anne Marie Smith, Pi Phi; Bonnie Lee Smith, DG.

Elizabeth Ann Smith, Forney; Jana Smith, Kappa; Rowland Allen Smith, off campus; Thomas Richard Soderling, Upham; Klaus Gunter Sonnenberg, Lindley; Paula Spence, off campus; Francis George Sprute, off campus; Robert Francis Stallman, Upham; Rosemary Stark, Alpha Phi; Linda Talbot Stelgers, off campus.

John Steinbrink, Lambda Chi; Carolyn Louise Stephens, Kappa; James Dale Stephenson, off campus; Karen Rae Sterner, Alpha Gamma; Glenn Carroll Strait, Willis Sweet; Sharon Lee Strang, Hays; Julie Strickling, Tri Delta; Larry James Strom, Beta; Allen Strong, Shoup.

Margaret Ann Studer, Houston; Ronald Joe E. Sturtevant, off campus; Willis Eugene Sullivan, off campus; Patricia Anne Swan, Kappa; Sharon Ann Swenson, DG; Maida Louise Talbot, off campus; Sharon Kay Talbot, off campus; Alyce Joyce Taylor, Campbell; Pamela Ann Taylor, Gamma Phi; Patricia Taylor, Theta; Sally

Ann Thode, Gamma Phi; Walter Franklin Thode, Jr., off campus; Mary Louise Thompson, Houston; Rita Thorne, Theta; Carol Thornock, Steel House; Laddies Raymond Tucek, Shoup; Jeff Tollefson, off campus; Robert Charles Trautwein, Willis Sweet; Nancy Lee Tucker, off campus.

Arlene Utican, Pi Phi; Karl Alebr Urban, off campus; Muriel Vermaas, Steel House; Max Dion Walker, Willis Sweet; Glenda Marjorie Walradt, Steel House; Coleen Ward, Kappa; Barbara Ware, Kappa; Rodney Lynn Watson, off campus; Lindarae Watts, Forney; Joseph Patrick Webster, off campus.

Dianne Weninger, Alpha Chi; Mary Melanie Wetter, Campbelle; Pat Whalen, Gamma Phi; Karen Whiteley, Forney; Betsy Wickes, Hays; Susan Lorine Wickman, Pine; Michael David Wicks, ATN; Jody Wiegand, Tri Delta; Richard Wilhite, Lambda Chi.

Ralph Edward Williams, off French; Judith Lynn Worden, Campbelle; Charles Albert Henry Wright, off campus; Donald James Yandell, off campus; Warren Yeakel, Lambda Chi; Anne Yenni, Kappa; Sandra Ytreedle, Tri Delta.

Evelyn McGown, Steel House; Sherry McGulre, Theta; Sandra McKean, Forney; Judy Bodenhamer McKendrick, off campus; Samuel William McNary, McConnell; Billie Jean Maas, Forney; Patrick Edwin Marcuson, off campus; Judith Manville, Pi Phi.

Don Allen Marshall, Chrisman; Leon Keith Martin, off campus; Mary T. Martin, Gamma Phi; Julie Martineau, Houston; Sharon Ann Martinelli, Alpha Gamma; Linda Mattis, off campus; Byron Kermit Meredith, off campus; Stephen Merlan, off campus; Sherry Meyer, DG.

Janice Gail Meyerhoff, Houston; Karen Lee Miles, Alpha Chi; Robie Chrystelle Mitchell, Pine; Jean Monroe, DG; Marlon Jill Mooney, DG; Michele Morgan, Theta; David Mulalley, off campus; Judith Mustard, Pi Phi.

Betty Frances Neale, Forney; Phyllis Nedrow, Tri Delta; Lorenzo Nelson, Delta Chi; Donna Newberry, Forney; Carol Ann Nicholas, off campus; Charles Joseph Nicholas, off campus; Karin Lynn Niven, Kappa; Gail Nystrom, Hays; Rita Wilson O'

Harrow, off campus; Karen Olson, Hays.

Mary Lynn Oliver, Houston; Richard Michael Oliver, off campus; Linda Olson, Steel House; Janet Orr, Pi Phi; Michael Vernon Ostyn, Chrisman; Frederick Ray Oyer, Gault; Jean Palmer, Houston; Victoria Palmer, Houston; Marilyn Parish, Tri Delta; Julie Pence, Gamma Phi.

Gary Peters, Sigma Nu; Laura Peterson, Forney; Kip Peterson, off campus; Max Richard Peterson, Phi Delta; Nancy Ruth Peterson, Gamma Phi; Carol Jean Platt, Alpha Chi; Lois Fitzsimmons Probst, off campus; Laina Sherill Phillips, Alpha Chi.

SUB Buffet Has 2 Menus On Sundays

"All you can eat" is the theme of the buffet dinner served at the Blue Bucket in the Student Union Building on Sunday evening. Two menus are offered at different prices for students and faculty members.

The buffet service has been set up to accommodate students whose living groups do not offer a third meal on Sundays.

According to Dean Vetrus, buffet service manager, these buffets will be served for the next three weeks. Beginning in April, the Bucket will serve pancake dinners once a month.

Vetrus said, "I'm particularly interested in feeding the students." However, at present, there tend to be more adults than students attending the buffet.

He feels that perhaps the time or price of the dinner is being objected to by those not attending.

Vetrus is anxious to work with students in solving these problems. He wants more students to use the facilities offered at the SUB because it was built for their benefit.

By coordinating the activities of the Blue Bucket with the Campus Calendar, the Student Union hopes for more successful student meals.

Patronize Argonaut Advertisers



NOT BAD, FROSH — Shown after their announcement as finalists for Frosh king and queen Wednesday night are Brooke Clifford, Gamma Phi; Tena Grosky, DG; Tom Little, Fijj; Zoe Anne Grlpton, Pi Phi; Bill Morrow, Sigma Chi; and Becky Tridle, Alpha Phi. Not pictured are Rich Carr, SAE, and Dick Parson, Willis Sweet.

Top Students Announced In Agriculture

Dean James E. Kraus of the College of Agriculture recently announced the names of 18 outstanding students of agriculture who have grade points of 3.5 or higher and are honored by inclusion on the dean's list. Enrollment in the college includes nearly 300.

One of the 18 students, Jeffery Lynn Anderson, off campus, is honorary vice president of Phi Kappa Phi and has earned the highest grade point of any student in his class on the University campus.

"Based upon upgraded scholastic requirements, it is felt that the group of students is very well prepared to enter their chosen field in scientific agriculture," said Dean Kraus.

The list of honor students includes, besides Anderson, James Sheridan Archibald, off campus; Dennis John Conley, off campus; Gordon Jay Cooper, off campus; Francis Joy Esser, Upham; Arthur Emil Grabski, Shoup.

Leon Afton Hansen, LDS; Michael Lee Heath, Lindley; Jerry Alfred Howard, Farm House; Paul Joe Anderson, Off Campus; Wayne Adams Ills, Off Campus; Russell Gene Knopp, Off Campus.

Cecil Swayne Johnson, Willis Sweet; Donnie Duane Kress, Farm House; David Ray Lohr, Farm House; Jimmy Carl Olson, Farm House; James Ronald Reimann, Off Campus; Emory Dale Kalbfleisch, Off Campus.

KUOI BROADCASTS In observance of 4-H week in 1964, KUOI had a series of five minute broadcasts concerning the program.

Ag Group To Visit Campus

A team of consultants from the Cooperative State Research Service of the U.S. Department of Agriculture are being sent to the Idaho campus during the week of April 6 to 10.

The team consists of the following: Dr. Donald Y. Perkins, principal horticulturist, and Dr. Ruben Heerman, principal agronomist from CSRS; Dr. Wayne of the teaching, research and pathology, University of Illinois; Dr. John Carew, Head, department of horticulture, Michigan State University; and Dr. J. R. Cowan, Head, department farm crops, Oregon State University. They will conduct a critical review of the activities of the Department of Plant Sciences.

The unbiased opinions and advice of these specialists on the future organization and operation of the teaching, research and extension function of the department have been solicited in order to better serve the people of Idaho.

After the regular business meeting, a hootenany and a movie on Russia, followed by a discussion, is planned.

KUID-FM

FRIDAY	
2:00	World of Sound
6:00	Easy Listening
7:00	News
7:15	Washington Report
7:30	Music from Idaho
8:00	Dutch Light Music
8:30	The Cincinnati Symphony
8:45	The Cincinnati Symphony (Cont.)
9:00	The Cincinnati Symphony (Cont.)
10:00	News
10:15	Sign Off
MONDAY	
2:00	World of Sound
6:00	Easy Listening
7:00	News
7:15	The Navy Swings
7:30	They Bent Our Ear
8:00	As I Roved Out
8:30	World of the Paperback
8:45	Germany Today
9:00	Musical Masterworks
10:00	News
10:15	Sign Off

Cosmos Elect Sakilar Head

Arvind Sakilar, off-campus, was named president in the Cosmopolitan Club elections.

Other officers elected were John McMahon, Phi Delta, vice-president; Gayle Kraemer, Houston; secretary-treasurer; and Lindarae Watts, Forney, corresponding secretary.

The Cosmos' next meeting will be in the SUB Gold Room, Friday, March 27, at 7:30 p.m.

MONEY GIVEN The University was given \$750 to encourage 4-H work in 1964.

SENIOR SPECIAL
Calling Cards for Graduation
Announcements . . . 50 for \$1.50
Military Cards at Slightly Higher Prices.
QUEEN CITY PRINTING CO.
314 South Washington

FOR MEN

KINGSWAY
SHOES FOR MEN

JOHN C. Roberts

\$10.99
Other styles to \$14.99

\$14.99
Black, Natural & Cordovan —
Other styles \$9.99
and up in Neolite and Leather soles.

LARRY'S SHOES

The term leather applies to the uppers only.
WHERE YOU CAN BE SURE OF QUALITY AND FIT
215 S. Main — Moscow — TU 2-0781

1. I've decided on the kind of job I want when I graduate.
Knowing you, I'd guess it to be something modest — like Secretary of State or President of GE.

2. I hadn't thought of those specifically. What I had in mind was a job where they give you a lot of assistants. I think that would be nice.
Very nice. Maybe they could start you off at a hundred grand a year.

3. Well, I did run an extremely successful Nickel-a-Pickle sale.
Don't forget to demand plenty of stock options.

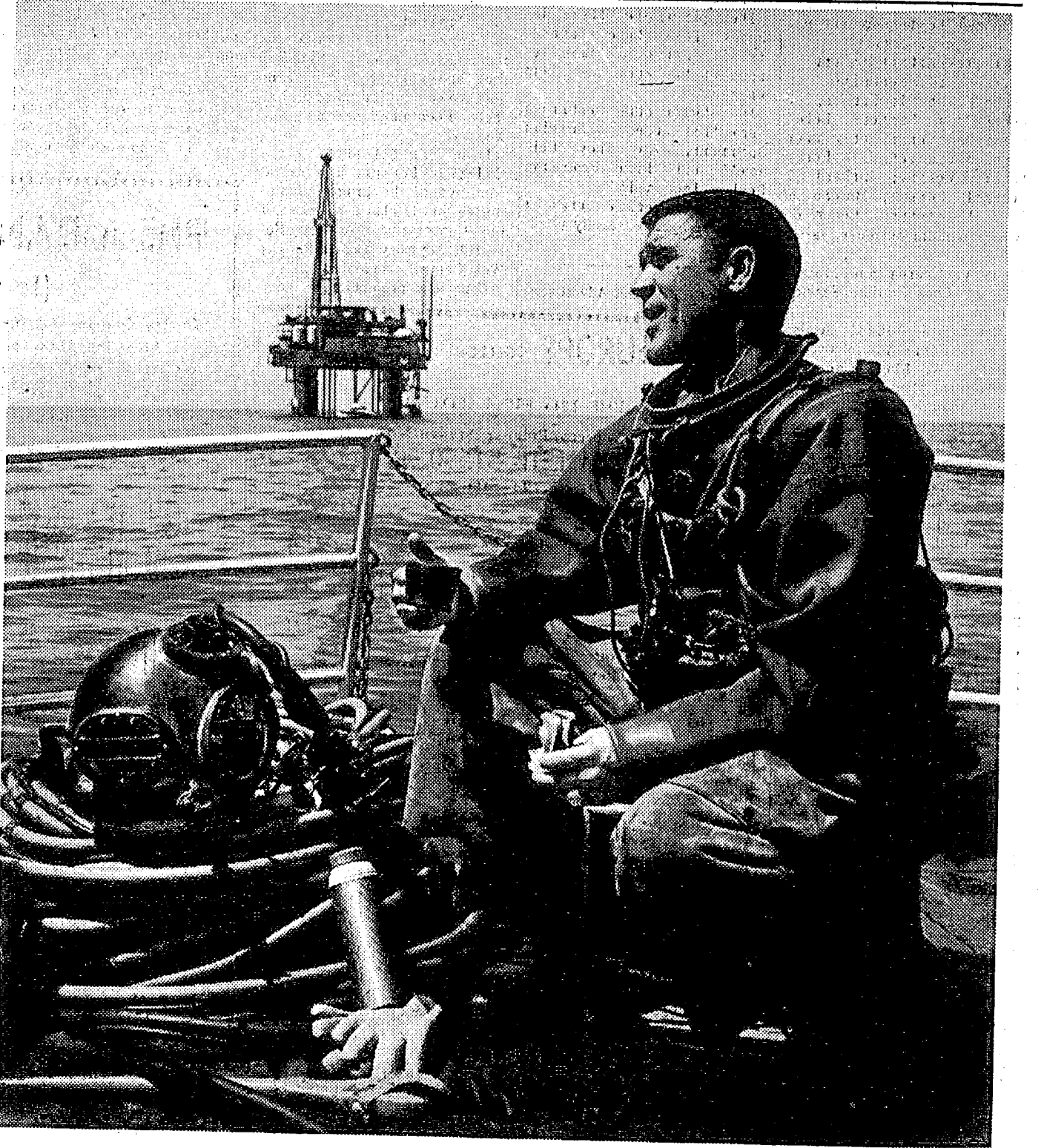
4. You think maybe I should lower my sights a little.
I'm afraid to tell you what I think.

5. I'd be willing to settle for a vice-presidency.
Look — why don't you see if you can qualify for one of Equitable's executive training programs. The work is interesting, the pay is good. And if you prove you have the ability, you may very well end up with a title and a couple of assistants.

6. You really have a way of seeing through a problem.
Rooming with you has taught me a lot.

Make an appointment through your Placement Office to see Equitable's employment representative on March 26 or write information.

The **EQUITABLE** Life Assurance Society of the United States
Home Office: 1285 Avenue of the Americas, New York, N. Y. 10019 © 1964



We like doing business with Murray Black

And he likes Standard's policy of supporting local business

If you had an oil well out in the ocean, as Standard often does, you'd find Murray Black a useful man. He helps to build, and also services, underwater oil wells and pipelines.

Murray is not a Standard employee...he's an independent contractor, with five other deep-sea divers on his payroll, and thousands of dollars of his own money tied up in equipment.

He started specifically to serve Standard's offshore drilling operations near Santa Barbara, and, from this small, local beginning, has become one of the busiest submarine contractors on the West Coast.

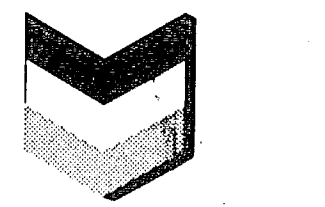
While his services are unique, he is only one of some 18,000 individual suppliers from whom Standard buys goods and services every year. Many are small, independent operators such as Murray Black.

Standard's purpose is to spread its purchasing as widely as possible, so that its dollars help to build many local businesses and communities.

Our annual shopping list is more than 50,000 items long. As our dollars flow into your community through local purchases, they help its whole economy. And the benefit, sooner or later, reaches out to you.

Planning ahead to serve you better

STANDARD OIL COMPANY OF CALIFORNIA



AWS Primaries Slated Thursday In Ad Building

Associated Women Students will hold primary elections Thursday, March 26, in the Administration Building from 8:30 a.m. to 4 p.m.

General elections will be held a week later. The top two candidates for each office chosen in the primary will run in the general election. The AWS does not provide for the election of a vice president. The girl receiving the second highest number of votes for president will become vice president.

Nominees for president are Sherry Meyer, DG; Carol Husa, Hays; Joan Rumpeltes, Pi Phi; and Jerri Ross, Alpha Phi. Secretary — Nancy Pfaff, DG; Paula Spence, Gamma Phi; Dona Gibson, Alpha Phi; Linda Werner, Alpha Gam.

Treasurer — Carol Ritter, Hays; Kay Brown, Pi Phi; Kathy McCloud, Alpha Chi; and Phyllis Nedrow, Tri Delta. Maid of Honor — Donna Severson, DG; Sue Reese, Houston; and Janet Orr, Pi Phi. Page — Jean Baty, Theta; Joanna Blood, Ethel Steel; and Mike Gagon, DG.

Placement Interviews Announced

Sidney W. Miller of the University Placement Office has announced interviews for the coming week:

March 23 - Yakima Public Schools (Washington) Placement Office.

March 24 - Central Valley School District, Spokane, Placement Office; and Guy F. Atkinson, Engineering Building.

March 25 - Seattle First National Bank and Sedro Wooley School District, Washington, Placement Office; Green Giant Company, Engineering Building.

March 26 - E.I. Dupont de Nemours & Co., Palo Alto, Cal., and Equitable Life Assurance Society, The Spokesman-Review Placement Office; Montana Power Company, Engineering Building.

March 27 - E.I. Dupont de Nemours & Company, Palo Alto, Calif., Placement Office.

Agency Reps To Visit U-I For Meeting

Representatives of forest industry, public forest and conservation agencies that have a direct interest in forestry programs for Idaho farmers and small woodland owners will meet at the University Forestry Building at 9 a.m. Thursday, March 26.

Main objectives of the Idaho Interagency Forestry committee are to coordinate farm forestry program efforts, standardize farm forestry recommendations among agencies and develop more interagency cooperative assistance.

Topics include new research projects at the University that have particular value in farm forestry, the McIntyre - Stennis Act, results of a sawmill survey, progress in the Resource Conservation Development program and the development of a woodland news organ.

Representatives attending will be Mel Carlson, Soil Conservation Service, Boise; Glenn Deitschman, forest management research, U.S. Forest Service, Moscow; Richard E. Schaertl, forester, Bureau of Land Management, Coeur d'Alene; William Scribner, assistant state forester, Boise; and Harry Vogt, area conservationist, Soil Conservation Service, Moscow.

Others are Millard Swales, Farmers Home Administration, Moscow; W. Lloyd Campbell, Agricultural Conservation Stabilization commission, Boise; and E. W. Tisdale, associate director, Forest, Wildlife and Range Experiment station, E. L. Williams, forest economist, and Dean Ernest Wohletz, College of Forestry, all of the University of Idaho.

7 CEES Trailer - Marine SUPPLY AND SALES

- * NASHUA
- * FRONTIER
- * COLUMBIA

Mobile Homes



EUROPEAN JOBS

The trend among students is to work in Europe during the summer. Thousands of jobs (e.g. resort, lifeguarding and office work) and travel grants are available to every registered student. Some wages are as high as \$400 a month. For a complete prospectus, job and travel grant applications, a \$1 ASIS book coupon and handling and airmail charges send \$1 to Dept. M, American Student Information Service, 22 Ave. de la Liberté, Luxembourg City, Grand Duchy of Luxembourg.

Peck Will Give Final Lecture

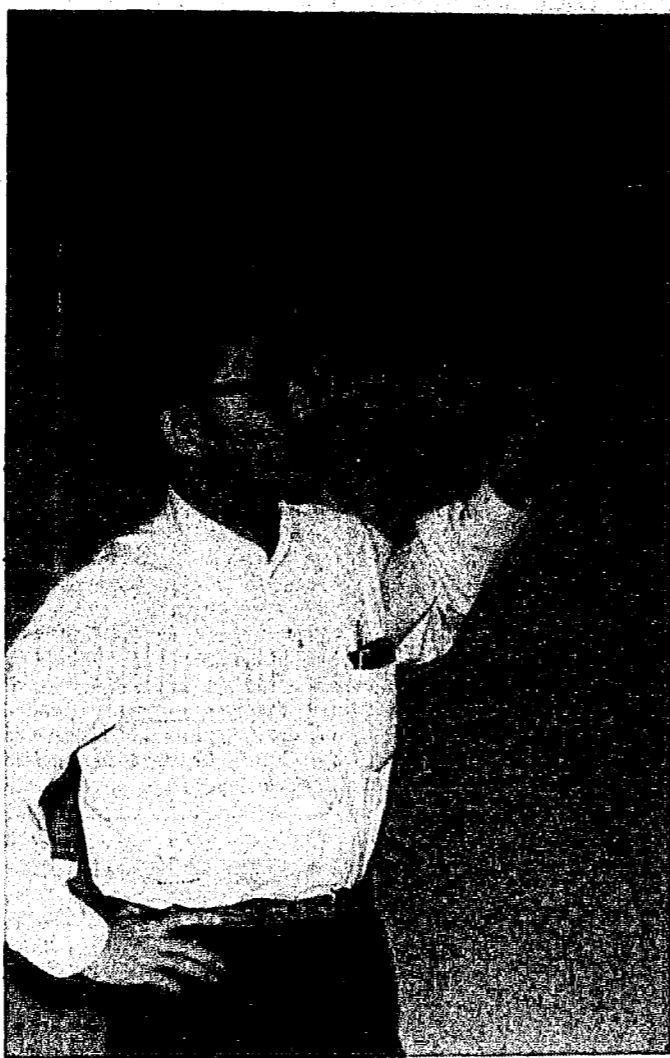
Dr. Edson Peck, professor of Physics, will present the final lecture in a three lecture series Friday in the Kullyspell Room of the Student Union Building at 7 p.m.

The topic will be "Major Religions: Their Basic Claims." He will discuss the major religion of the world and their teachings.

Dr. Peck's other lectures were "The Judeo - Christian Documents: Are They Reliable?" and "Bible Prophecy: Real or Imagined?"

The three lecture series is presented by Intersarsity Christian Fellowship.

Patronize Argonaut Advertisers



Mining Interest Drew Rama To U

By WALTER JOHNSTON Argonaut Contributor

Interest in mica mining in India brought an Indian scholar to the University of Idaho.

The United States Bureau of Mines recommended the University of Idaho to Chassetty Ramakrishna when he told them of his wish to study mining in the United States for a semester. Ramakrishna, or Rama as his friends here call him, is visiting the United States in an attempt to learn all he can about mining, his plans being to aid his Indian people upon his return to India.

A graduate in agriculture from the University of Madras in India, he had been working in a supervisory capacity for his father, who owns several mica mines in India.

Mica To U.S.A. "India mines over 80 percent of the world's Mica, and much of this is exported to the United States to be used in electrical appliances. Mica is not a conductor and is therefore very necessary in this way," he said.

"The mica in India is considered the best quality mica in the world, and the only comparable mica producing country is Brazil, but they do not mine nearly as much mica as India," Rama pointed out. He said that most of the mica is shipped out of Madras, his home town and where he went to college.

Ramakrishna, who studied English at an early age, finds that education in the United States differs very little from the system in India. One difference he described was that a university in India may be composed of different colleges in different towns, whereas the universities here are made up of many colleges in the same town.

Don't Grade Quizzes Also he pointed out that the primary and secondary schools in India never grade classroom quizzes, but wait until the end and then grade completely on the final examination.

A third difference Ramakrishna noted was that each student must spend one year in a pre-university class program, in which there are no electives and the students are required to take a general course. Ramakrishna said that the instructors in the college of mines are very good at the University of Idaho.

Too Cold Here "I am enjoying my stay here in Idaho, but it is too cold as compared with the warm weather in India," Ramakrishna said. He pointed out that the temperature in India is usually between 80 and 100 degrees, sometimes gets up to 120 degrees. "Also I miss the hot food we eat in India, usually with six or seven different spices in it," Ramakrishna said. "It is good to see snow for the first time, though, and very few people from India ever have or will get to see snow."

Ramakrishna plans to visit England after the semester ends and before he returns to his home.

Highwaymen Prepare For Sixth Visit

Idaho Department of Highways will hold its sixth annual Engineering-Training conference at the University of Idaho Student Union March 25 and 26.

Sessions will cover new information on a wide variety of subjects likely to be faced by engineers.

Moderators for the two day of meetings will be C. A. McDonald, assistant district engineer, Coeur d'Alene; C. B. Humphrey, assistant district engineer, Lewiston, R. B. Christensen, construction engineer, Boise, and H. A. Mattson, assistant district engineer, Boise.

Addressing the group at a banquet at 6:30 p.m. in the Student Union on "The Contractor and The Engineer" will be Sam C. Guess Spokane engineer.

Church News

CANTERBURY HOUSE Friday, Open House at Chaplain's from 8 p.m. on.

Sunday, Chaplain Davis will preach at St. Mark's Church, on the theme: "The Lord hath need of Thee," at the 11:00 a.m. service.

5:10 p.m. Evening Prayer at Canterbury House.

5:30 p.m. Dinner.

6:15 p.m. Inquirers' class, with the subject being "Church Policy" and "Church Protocol."

Wednesday, 7 p.m. Holy Communion and breakfast.

Thursday, 12:05 noon, Holy Communion and lunch.

Research Tool Developed For Blood Study

A new research tool which is just scratching the surface of its capability is being used in University undergraduate research sponsored by the Idaho Heart Association under the Health Education Scholarship fund.

The tool is an electrophoretic machine, so new that uses for it are being found nearly every day.

James Scheel, SAE, is using it in working with Dr. Phillip Dumas assisting professor of zoology, on a project titled "Electrophoretic of Blood Protein." Scheel has received a \$250 award from the Idaho Heart Association.

"Electrophoretic is new and is just starting to be used in research. It can aid in the diagnosis of a great variety of diseases, among them several types of cancer," said Dr. Dumas.

With the method, Scheel, a senior, is separating different kinds of frogs by means of blood protein tests with the paper strips used with the machine. Frogs from separate areas may look the same physically, but the blood protein tests can determine they are from different places, or have different heredity or environment.

23 Named To Mines Dean's List

Twenty-three University of Idaho College of Mines students have been named to the Dean's List announced by Dr. R. R. Reid, acting dean.

High men with a 3.94 and 3.84 out of a possible perfect 4.0 were James Mackl, Gault, engineering; and Robert Erickson, Lambda Chi, geography, respectively. Mackl has been on the list for achieving B or better grades six times.

Others on the list include Fred Brackebusch, off campus, and Donald Hartman, TKE: Maung Aung Kyi, Willis Sweet; Larry Kirkland, Dale Howard, James Koonce, Huntington Hatch, Ted Burke, Carlan Silha, and Frank Erickson, all off campus; Antony Teske, Beta; Ronald Reed, Sigma Nu; Robert Fenton, James Hickerson, Jr., and Keith Forbes, all off campus; Brian Sack, Lambda Chi; Courtney Chamberlain, Gault; Raymond Stewart, Jesse Terpstra, off campus; Richard Biggsstaff, Chrisman, and Robert Farrelly, off campus.

Folk Singers Fakes? Prof To Discuss

Are most folk singers fake? Dr. Jan Brunvand, assistant professor of English, will contend they are in his talk, "Folk Songs and Fakes" Saturday night at the Burning Stake.

Dr. Brunvand will contrast the performances of Joan Baez, Odetta and the Kingston Trio with the songs from the backwoods people by tape recording when he addresses a meeting of The Committee.

Dr. Brunvand is the fourth featured speaker at committee meetings this month.

DOC AWARDS GIVEN In 1959 fifteen graduate fellowships for doctorate studies were awarded to the University.

PIC-A-BANANA SPLIT

(1c to 50c)

Or Try One of Our Many Varieties of Sandwiches After the Show or as a Shopping Break.

ROGERS ICE CREAM

Behind The Theatres

SENIORS Buy A New Car

IMPALA SPORT COUPE

195 h.p. V8, standard trans., whitewalls, wheel covers, padded dash, tinted glass.

NOTHING DOWN

DELIVERY NOW

91.79

PER MONTH First Payment in September

* SENIOR PLAN

* BANK RATES

* IMMEDIATE DELIVERY

* GUARANTEED LOWEST MONTHLY PAYMENTS

IN STOCK

- * Monza
- * Chevy II
- * Chevelle
- * Biscayne
- * Belair
- * Impala
- * F85 Cutlass
- * Jet Star I

CHEVY II NOVA

SPORT CPE, 6 CYL., 120 H.P.

STANDARD TRANSMISSION.

NOTHING DOWN

DELIVERY NOW

66.54

PER MONTH

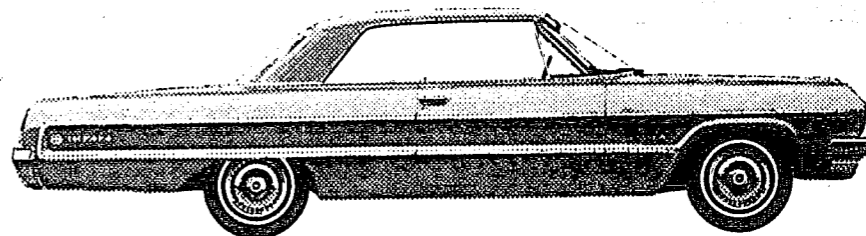
24 Month

24,000 Mile

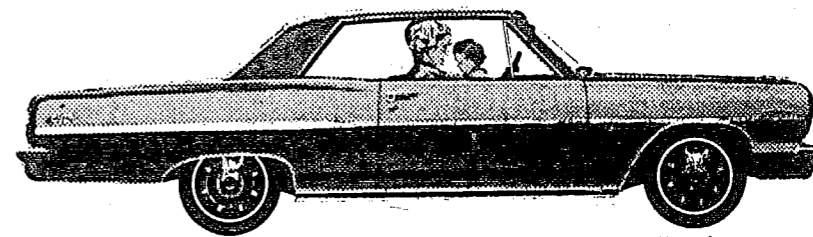
Warranty

Good Anywhere in U.S.

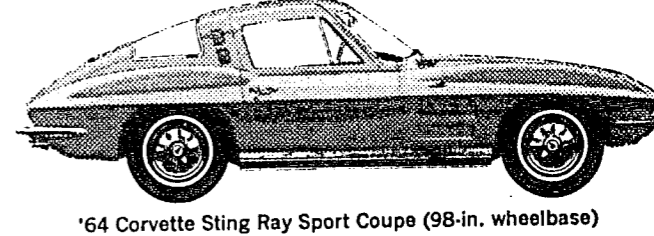
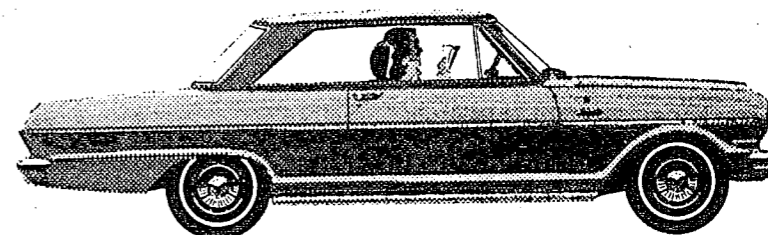
FAHRENWALD CHEVROLET



'64 Jet-smooth Chevrolet Impala Sport Coupe (119-in. wheelbase)



New Chevelle Malibu Sport Coupe (115-in. wheelbase)



Chevrolet will go to any length to make you happy

Things have changed a lot since a Chevy was only a Chevy. Especially your ideas of what you want a Chevy to be.

So now you have the Jet-smooth Chevrolet—17½ feet of pure luxury, bumper to bumper. The size makes it a luxury car. But not the price.

Or you can choose the thrifty Chevy II, a 15½-foot family car with all kinds of passenger and luggage space.

This year, your choice might be the new 16-foot-plus Chevelle, sized to fit nicely between Chev-

rolet and Chevy II (and between parking meters, with five whole feet left over).

Then, too, there's the sporty 15-foot Corvair, so right for so many people (you girls, in particular) that we've never touched an inch of it. And finally, Corvette—still 14½ feet and still too much for any true sports-car lover to say no to.

The long and short of it is, you don't have to go to any length to find exactly the kind of car you want. Just see the five different lines of cars at your Chevrolet dealer's.

THE GREAT HIGHWAY PERFORMERS Chevrolet • Chevelle • Chevy II • Corvair • Corvette See them at your Chevrolet Showroom

10 COUNTRIES EUROPE COLLEGE TOUR 57 DAYS OR MORE

JUNE 13th FROM SPOKANE

Special to Moscow-Pullman Students or Adults

COMPLETE \$1590.00

NO EXTRAS TO PAY

Check These Against ANY Tour You've EVER Seen. OR MORE

- (1) JET Spokane - Lisbon - and Paris - Spokane
- (2) ALL meals (3) at ALL places, hotels, etc.
- (3) De-Luxe or Jet Plane; EVERY FOOT of your travel provided.
- (4) English - European guides. ALL LANGUAGES.
- (5) OVER 40 planned sight-seeing excursions (including bull fight in Madrid, etc.)
- (6) Tips and taxes, all meals, all countries.
- (7) COLLEGE CREDIT available (up to 8 credits for students or qualified adults who register).

Call TRAVEL at Logan 4-1214

PELTON'S VILLAGE INN

Special Sunday Dinners

Featuring:

- * 1/2 Spring Chicken
- * Sirloin of Beef
- * Virginia Ham
- * Deep Fried Prawns

\$2 to \$3

Served With Soup or Juice, Hot Vegetable Home-made Roll Coffee and Dessert

NEW !!! Help Yourself to Our Salad Bar. Served with Hot Roll, Coffee and Dessert\$1.50

BANQUET FACILITIES UP TO 300

917 N. Grand 6 a.m.-9 p.m. LO 7-2771 Next to Cordova Theater Closed Mondays

Dr. Margaret Coffey Installed As PE Association President

Dr. Margaret A. Coffey, Associate professor of Physical Education, assumed the office of President of the Northwest District Association of the American Association of Health, Physical Education and Recreation at the recent District Conference in Spokane, Washington.

The Northwest District is one of six districts in the nation deriving its membership from professional educators from Idaho, Oregon, Washington and Montana.

Dr. Coffey will serve during the 1964-65 year until the next annual conference in Portland, Oregon.

At the recent District meeting Miss Edith Betts Associate Professor of Physical Education and Northwest District Representative of the Division for Girl's and Women's Sports, served as chairman for two sectional meetings.

Dr. Leon Green, Head of the Physical Education Department spoke to the student section and acted as chairman for the Phi Epsilon Kappa dinner, the professional honorary for men. Dr. Ralph Hassman, Associate Pro-

cessor of Physical Education, served as Vice-President of Health Education during the past year and was responsible for health section meetings during the conference.

Following the District Convention, Dr. Marguerite Clifton, Vice President of the Division for Girl's and Woman's Sports and Associate Professor of Physical Education at the University of California at Los Angeles, visited the University of Idaho campus.

She attended a joint meeting of the Physical Education Majors Clubs of the University and Washington State University. She spoke of the opportunities for women professional preparatory students to contribute to the growth and development of sports programs for women.

Sports

WSU Diamond Squad Opens In Lewiston

The Washington State University baseball team opens a 38-game schedule here on Tuesday, March 24, against the Grizzlies of Montana State University.

The opener will serve as a preview for the Cougars and the Grizzlies who move to Lewiston, Idaho on March 26 for the opening round of the annual

Banana Belt Tournament also featuring the University of Idaho, Gonzaga, Seattle University and Lewis-Clark College of Portland.

Coach Chuck Brayton's 1964 Cougar squad features an interesting combination of experience and youth. WSU has two top candidates for All-Coast honors in third baseman Larry Schreck, Spokane, and catcher John Olerud, Auburn, but Brayton will be counting heavily on a group of upcoming sophomores in several positions.

Schreck, who played in left field most of last season, was the Northern Division batting champion in 1963 with a sparkling .490 average. The Spokane junior is being used at third base right now, but there is a possibility that he may move back to the outfield if Brayton decides to use footballer Dale Ford, Olympia, at third. Ford has been working both at first and third in early drills.

Olerud was one of the best receivers on the Coast last year as a sophomore and Brayton feels the former Federal Way High School star will blossom even more as a junior. He's strong at 6-0 and 190 pounds and has a great arm.

The Cougar pitching staff boasts experienced performers in seniors Bob Stephens, a right-hander from Seattle, and lefty Steve Bell, of Spokane, along with junior lefties Bob Salisbury, Bellingham, and Bruce Bain, Seattle, and righthander John McDonald, Cashmere.

Newcomers on the WSU pitching roster are righthanders Doug Lukens, Richland; Paul Taylor, Kirkland, and Chick Featherstone, Juneau, Alaska, and lefties Mike Avey, Whittier, Calif., and Harlan Ferry, Spokane. The Cougars lost a promising sophomore when Rich Cook, of Mossyrock, signed with the New York Yankees last summer.

HARRIERS—TOPS!

The University Harriers, cross-country team, won the Pacific Coast Invitational meet and finished third in the National AAU Championships in 1959.

Lady Cagers Play Today

A women's basketball team from Washington State University will take on Idaho's Women's Recreation Association ball club this afternoon in the Women's Gymnasium. The game will commence at 4 p.m. Members of the Idaho team are as follows:

Pam Ponzio, Hays; Jeanie Turner, Hays; Libby Sumner, Hays; Billie Trostle, Hays; Bonnie Johnson, Hays; Georgia Cutler, Forney; Betty Hammond, Forney; Betty Neale, Forney; Donna Olson, Pine; Kathy Worsley, Pine; Jackie Smith, Pi Phi; Doty Fawson, Campbell, and Kathy Youmans.

Other action at the Women's Gym this weekend will be an open practice session for all girls interested in gymnastics from 9 to 10 a.m.

Snow Study Moves Ahead

Systems design of telemetry equipment to tell what is happening in the snow pack in remote mountain locations took a step forward at a meeting attended by Engineering Assistant Research Professor G. A. McKean.

The University of Idaho, under contract to the Corps of Engineers, has been pioneering in the design of radioisotope snow gages which can immediately provide data to predict run-off and flood possibilities.

McKean met in Chicago with representatives of Motorola, Inc., to discuss problems which led to a tentative design of radio equipment suitable for use in both the radioisotope snow gage system and a stream gaging system being tested in the Sacramento Valley. A single design of radio equipment that would satisfy both needs was the aim of the session.

The special radio equipment is not available commercially but may soon be as a result of the conference.

"It is anticipated that this equipment will be an integral part of the successful completion of the University's work in this area," McKean said.

Tracksters To Meet At WSU Saturday

By LARRY GRIMES
Argonaut Sports Writer

The University of Idaho Vandals and the Washington State University Cougars, along with track and field athletes from between 15 and 20 other schools, will be participating in the 22nd annual WSU Indoor Meet this weekend.

A wide range of events are scheduled for Saturday in Hollingbery Field House in Pullman.

This annual track event, the oldest in the Pacific Northwest, is made unique by that fact that it is the only meet where javelin competition is held. The javelin competition will be in the morning but due to the element of

danger no spectators will be allowed until 1 p.m. when the usual events will be run off. The public is invited for the afternoon portion of the meet.

Coach Doug McFarland will take approximately 35 men to participate in this meet. According to McFarland the meet still has to be considered a tune-up as far as the Vandals are concerned, even though Idaho has defending champions in three of the events.

Distance man Paul Hendon is defending champion in the mile and a half, but will be pushed by John Valiant, Cougar junior who has unofficially lowered Hendon's mark of 6:00.0 to 6:40.5.

Nick Carnefix will be defending his 1:12.9 in the 500 yard run

and is expected to run strong even though he may be somewhat below his peak, suffering as are most of the Idaho squad from the lack of opportunities to get out and get in shape.

Idaho's mile relay team is also defending champion for the meet, but may have problems due to the fact that nationally rated sprinter Bob Johnson won't be able to participate due to a pulled tendon.

In addition to the above mentioned runners, Nils Jensen is expected to add strength in the long distance events. Jensen will run in the 1000 yard event. As far as the field events are concerned likely standouts for Idaho would include Mickey Rice and Max Leetow in the discus and Bob Ruby in the hop, step and jump.

Potential point getters in the first events might include Bill Bryson and Nick Mignone.

Although the Vandals sent a few participants to the Portland Indoor Relays last week, Saturday's meet will be the first squad effort in preparation for the Far West Relays to be held next week in Seattle.

Game In 'Good Shape,' But Foliage Sparse In Selway Game Area

Seven forestry students and three professors snowshoed into the Selway area for field work in a Big Game Management class and came back with the report that deer appear in "good shape."

Part of the two-day trek was to arrive at an opinion based on a partial survey on the general condition of the animals and the range.

"The range appears to be going downhill," said R. H. Giles, Jr., instructor in wildlife management. "We found examples of over-browsing which in time will cause a reduction in big game quality."

Solutions to the problem are increased harvest of deer of both sexes and supplemental range management.

Giles said spraying of herbicide by helicopter is a method now being used by the Forest Service to stunt the growth of tall brush to make more browse for animals. Some of the bushes which normally grow to 20 feet have been turned into reachable feed for the animals through use of the herbicide.

The class headquartered at the Fenn Ranger Station north of Grangeville and made treks up the Selway and the Lochsa rivers. They spotted nine mountain goats, 50 elk, 20 white-tail deer, four mule deer and a moose.

Ranger Clyde Blake at Fenn

worked with the group discussing management policies, problems, techniques, philosophies and ways to determine condition of the range.

Making the tour were Giles, Dr. Paul D. Dalke, leader of the Idaho Cooperative Wildlife Research unit; Dr. Kenneth E. Hungerford, professor of wildlife management; Jon Bergquist, Amery, Wis.; Jerold Burkhardt, Weiser; James Fuller, Caldwell; Richard Powers, Salmon; Michael Shields, Walla Walla, Wash.; David Vail, Boise, and Terry Williams, Twin Falls.

Grid Coaches Hold Clinic In Caldwell

Idaho's high school football coaches will be exposed to college level advice when the Vandal football coaching staff conducts a coaches' football clinic Saturday in Caldwell.

The entire Vandal coaching staff will conduct the clinic with each of the coaches giving a 50-minute lecture on his aspect of preparing the Vandal team for its season.

Attending the meet will be head coach Dee Andros, defensive coach Steve Musseau, line coach Dick Monroe, backfield coach John Easterbrook, and frosh coach Bud Riley.

DR. J. HUGH BURGESS
OPTOMETRIST
Contact Lens Specialist
Quick, Accurate Duplications
In Our Laboratory
O'Connor Bldg. Ph. 2-1844

PHILLIPS 66
SERVICE
Guaranteed Phil-Check
Lubrication
205 N. Main TU 2-9661

VARSITY DRIVE-IN
OPEN FRI. - SAT. & SUN.

THE PHANTOM OF THE OPERA
HERBERT LOMA
HEATHER SEARS
THORLEY WALTERS
MICHAEL GOUGH
IN BATHMAN COLOR

— And —
— True Life —

NO MAN IS AN ISLAND
JEFFREY HUNTER
MARSHALL THOMPSON

— Plus 2 Cartoons —

Kenworthy
Tonight Thru Saturday—7-9

SUNDAY IN NEW YORK
COLOR

Sunday—All Next Week
Sunday at 5-7-9
Monday-Saturday—7-9

NATALIE WOOD & STEVE McQUEEN
"LOVE WITH THE PROPER STRANGER"
Nominated for 5 Academy Awards!!

NUART
Tonight Thru Saturday—7-9

VINCENT PRICE
THE COMEDY OF TERRORS
In Color

Sunday—All Next Week
Sunday-Thursdays—7 only
Friday-Saturday—7:30 only

ELIA KAZANS
AMERICA
STARRING STATHIS GIALLELIS
WARNER BROS.
Nominated for 4 Academy Awards!!

AUDIAN
Tonight Thru Saturday—7-9
"Who's Minding The Store?"

Sunday Thru Tuesday—7-9
— Fine Art Series —

JOSEPH E. LEVINE presents a wickedly witty view of that field of combat called...
The Conjugal Bed
a story of the Queen Bee
AN EMERALD PICTURES RELEASE

Cordova
Tonight Thru Saturday—7-9
"Who's Been Sleeping In My Bed?"

Sunday—All Next Week
At 7 and 9
'Sunday In New York'

SUB BORAH THEATER
★ Presents ★
"LOVER COME BACK"
★ STARRING ★
Rock Hudson Doris Day Tony Randall Edie Adams
Show Times:
FRIDAY—7 & 9:30 P.M.
SUNDAY—8 P.M.
Prices:
Single 35c
Couple 60c

THE MAN IN TUNE PLAYS CRICKETER IN TWO-PART COLOR HARMONY



Urbanite Contemporaries — Sportcoats and color-cued slacks make their mark of distinction with the man who knows. The fabric, Dacron® and worsted. The tailoring, neat and natural. The complete look, perfection.

SPORT COATS \$35.00 to \$39.95
SLACKS \$15.00 to \$19.95

CREIGHTONS, INC.
Since 1890

the WINTHROP WEATHERGRAIN
natural for campus and young executive wardrobes

An American Classic for the active man... robust weather... and traditional good looks.



From \$13.95

The illustration of, or the term leather, in this ad, describes the uppers only.

MYKLEBUST'S
MOSCOW, IDAHO

SENIORS... DON'T DELAY!!

FORD GALAXIE 500/XL CONVERTIBLE



DEGREE DAY IS ALMOST HERE
BUY and DRIVE your new FORD NOW.
Our SENIOR FINANCING PLAN with its deferred initial installments will be tailor made to fit you.

DELTA FORD SALES
116 East Second Phone TU 2-1489