



# The Idaho Argonaut

The University of Idaho - MOSCOW, IDAHO

VOLUME 71, NO. 4

Friday, September 23, 1966

## ASUI Budget Problems Still Plague Exec-Board

The proposed 1966-67 budget for Associated Students of the University of Idaho which was overextended in anticipation of higher enrollment, continued to be a main topic of discussion in the meeting of the ASUI Executive Board meeting Tuesday night.

Cut-backs in the budget amounting to about \$5,000 were said to be needed by Executive Board budget area director, Joe McCollum, SAE. A meeting was scheduled for the board Saturday morning at which McCollum said more recent and final figures on the total enrollment would then be available for the board as a basis to work from.

The meeting will be open only to Executive Board and ex-officio members.

McCollum also proposed a permanent budget committee which he said would help to advise the board in future years. He said this would be helpful and would provide a continuous knowledge of budget allocations.

Plans for the Student Faculty Retreat, scheduled for Oct. 8 and 9, at Camp Lutherhaven on Coeur d'Alene Lake were also discussed. ASUI President Dick Rush explained that about 50 persons had been invited. He explained that this year's group will include faculty and students who have not been invited in pre-

vious years. He said many of them had not shown much previous interest in student-faculty relations and pointed out that it would be a good way to find why they have not been more concerned.

Executive Board member Stan Smith, Upham, told of the organization of the Educational Improvement Committee and named the list of students and faculty members. "I got the best people possible to do the job properly," he said.

Other business at the meeting included a request for board members to set up their office hours, and to start on their visitations. Members are planning to begin early visitations to living groups this year to speak and answer questions concerning student government.

Interviews for Operations Council and Student Union Board will be Monday night, E-Board member Louis Grieve, Forney, announced. Operations council, she explained will cover many areas this year, including the addition of Traffic Safety. It will cover everything that isn't academic," she said.

Students will be hosts for Idaho legislators again this fall, Rush announced. He said the legislators would be invited to visit the campus sometime after the state elections and would be asked to speak at individual living groups.

The program will be sponsored by the North Idaho Chamber of (Continued on Page 2, Col. 6)

## U-I Homecoming Finalists To Be Chosen Monday Noon



PICTURES IN SUB—Homecoming candidates have a picture of themselves on the bulletin board on the ground floor of the Student Union Building. The queen, who will be elected Friday, will reign over the game with Pacific University Saturday and at the Homecoming dance that night. Part of the candidates are, (back row) Pat McCollister, Houston; Ann Rutledge, Tri Delta; Berna Doane Hickman, Campbell; Wanda Sorenson, Ethel Steele; (front row) Helen Scott, Alpha Phi; Diane Foster, Alpha Chi; Jane Holbrook, Carter; Karen Longateig, Kappa, and Susan Reed, Pine.

Homecoming candidates have a picture of themselves on the bulletin board on the ground floor of the Student Union Building. The queen, who will be elected Friday, will reign over the game with Pacific University Saturday and at the Homecoming dance that night. Part of the candidates are, (back row) Pat McCollister, Houston; Ann Rutledge, Tri Delta; Berna Doane Hickman, Campbell; Wanda Sorenson, Ethel Steele; (front row) Helen Scott, Alpha Phi; Diane Foster, Alpha Chi; Jane Holbrook, Carter; Karen Longateig, Kappa, and Susan Reed, Pine.



QUEEN CANDIDATES POSE—Homecoming queen candidates have spent this week touring the various men's living groups on campus before the vote is taken Thursday noon. The finalists will be announced at the rally next Thursday night. Part of the candidates are (back row) Vicky Latimer, Forney; Tena Grosky, DG; and Cookie Fancher, Theta; Lou Larson, Alpha Gam; Margie Brunn, Pi Phi; Nancy Smith, Hays; Ruth McCall, Gamma Phi; and Peggy Killon, French.

## Big Weekend Near, Activity Mounts

By Julie Anderson  
Argonaut News Editor

Homecoming Queen finalists will be chosen during voting Monday noon by male University students casting ballots for 17 representatives of campus women's living groups.

The five finalists will be announced Monday night at their specific living groups, explained Roberta Timm, homecoming general chairman.

Voting will occur in all men's living groups. Off campus students may vote from 11 a.m. to 1 p.m. at the ASUI office of the SUB. This voting procedure will be used also to pick the Homecoming Queen, Thursday noon.

Activities of the five finalists will include appearances on KUID-TV Tuesday and more touring of living groups. Pictures of the queen contestants are posted and photos of the finalists will remain there until final voting on Thursday.

Finalists will receive an engraved silver dish and serve as attendants to the queen. Homecoming Queen will receive three trophies, one for her living group, an individual trophy for herself and a travelling alumni trophy. The trophies are on display in the Washington Water Power building downtown Moscow.

Mum sales, sponsored by Mortar Board, are going well, it was reported. All orders must be turned in by 4 p.m. Thursday and will be delivered Saturday morning. They can be ordered through sales representatives in individual living groups or by contacting Lynn Rock, Hays Hall. Wanda Sorenson, Ethel Steele, is general chairman for the annual project.

"Final plans and last minute details are being rapped up," says Miss Timm, in preparation for the big weekend which begins with a pajama parade and rally the evening of Sept. 30. Alumni

## "Man of All Seasons" Cast, Crew Are Named

Cast and crews for the University Drama Department production, "A Man for All Seasons," written by Thomas Bolt, were announced at the U-Hut, Thursday.

The historical drama is set for production Oct. 20, 21 and 22 at the University Auditorium with Edmund Chavez, drama professor, as director-designer.

The play, set in the turbulent reign of Henry VIII of England, will present senior drama student, Vyril Alcorn, in the title role of Sir Thomas More, Lord Chancellor to the king. Ellen Kelly will play his spirited wife, Alice, and Leslie Leek, will play the role of his daughter, Lady Margaret.

John Breden plays her suitor, William Roper, while Steve Scott and Bob Turrittin portray More's true and turncoat friends, the Duke of Norfolk and Richard Rich.

Don Volk is the comically cynical "common man" and Vicki Haight plays a woman who conspires against More. James Hutchinson is Cardinal Wolsey and Dale Bachman is Henry VIII.

More's bitter antagonist, Thomas Cromwell is played by Gerald Henry. John Naples is the Spanish ambassador and Phillip Schmidt is the ambassador's aide.

Crews include Donna Davis and Jim Freeman as assistants to the director; Michael Sheehy, stage manager; Jeanne Jacobs, Lin Severson, Christine DeThomas, Carmen Powers, Sally Perrine and Susan Turk, costumes, and Julie Martineau, Vincent Coleman and David Kugler, lights.

Others are Karen Rember, Anne Shaltry and Melissa Tenney, properties; Margaret Franklin, sound; Jan Kindschy, Julie Martineau, Don Volk, Steve Scott and Donna Davis, make-up; Candy Watson, house manager.

## Forum To Answer Frosh Questions

It's time for the students to quiz the faculty.

Frosh-Faculty Forums Tuesday, Oct. 4, will give the new student a chance to question the Idaho faculty on activities and academics—and a proper mixture of the two.

One professor or administrator and one student leader from each living group will be at each living group to head the 7 p.m. discussion. The student leaders will start the open question-answer period.

Discussions scheduled include: Pine at the Delta Sig house with Dr. Bernard Borning and Jerry Agenbroad, Delta Sig.

Pine at the Theta Chi house with Dr. William Billingsley and Ken Hall, Theta Chi.

Fijis at Pine with Mrs. Ruth Boas, Emma Sawyer, Pine, and Rod Bohman, Fijis.

Glen Lockery and Betty Ranta, Houston, at Borah. Lindley at Ethel Steel with Dr. Robert Giles and Christina Wood, French.

Dwaine Marten and John Cooksey, Sigma Chi, at Lindley.

Capt. Henry Harrison and Dave Hyde, Shoup, at Snow.

Graham at the Alpha Gam house with Dr. Arthur Gittins and John Kirk, Willis Sweet.

Don Kees, Art Crane, Graham, and Joan Elaman DG, at Graham.

Don Seelye and Lois Grleve, Forney, at Shoup. Miss Edith Retis and John Wellner, Chrisman, at Chrisman. Dr. Richard Porter and Stu Sprenger, Farm House, at McComell.

Merlin Nelson and Sonny Lage, Campus Club, at Campus Club.

Dr. Victory Montgomery and Jim England, Willis Sweet, at Willis Sweet.

Phi Deltas at Hayes with Dr. George Williams, Tom Gannon, Lambda Chi and Pam Poffenroth, Kappa.

Lambda Chis at Forney with Howard Alden and Ron Walters, Farm House.

Upham at Carter with Roland Byers and Bregda Beckley, off campus.

Stan Smith, Upham, at Upham.

Gault at Campbell with Dwight Kindschy and Anne Rush, Campbell.

Bart Morse and Gary Clark, Farm House, at Gault.

French at Sigma Chi with Francis Seaman and Tim Madden, Sigma Chi.

Borah at Alpha Phi with Bill Sloan and Sue Daniels, Alpha Phi and Marg Heglar, Alpha Phi.

Willis Sweet at Tri Delta with (Continued on Page 2, Col. 4)

## Swisher Set For Meeting

State Senator Perry Swisher, independent candidate for governor of Idaho, will speak at a no host luncheon at noon today at the Student Union Building.

The luncheon, open to all interested persons, is being sponsored by ICEP (Idaho Center for Education in Politics) headed by Jim Tegan, Phi Delta and the Young Republicans, Bob Wise, SAE, president.

Swisher, state senator from Bannock County, is running on the Republican platform as a pro-sales tax advocate. He has been editor of the "Intermountain," a weekly newspaper serving south Idaho.

"The student role in the campaign for the Idaho sales tax," is the topic of Swisher's talk at the luncheon. He will also answer questions from the floor.

"This luncheon is an educational experience or endeavor for the Young Republicans organization," stated Wise. We want students to meet the candidate, he stated.

Ben Goddard, McConnell Hall proctor, serving as northern coordinator for the Swisher for Governor campaign, will introduce the candidate. Don Watkins, Swisher's state campaign manager, will possibly attend, stated Wise. David LeRoy, SAE, is campus coordinator for Swisher.

The luncheon concludes a week of appearances for Swisher in Northern Idaho.

## LeTourneau Gets Fraternity Award

A University professor has been honored with the "Master Builder of Men Award," presented by the national Farm-House fraternity.

Duane LeTourneau, professor of agricultural biochemistry and soils, was presented the award at the biennial convocation of the fraternity at the University of Kansas. Dr. LeTourneau was cited for his work in establish-



Dr. LeTourneau

ing the University of Idaho chapter of the FarmHouse fraternity in 1957.

The fraternity has 22 chapters at land grant universities throughout the nation, and a membership approaching 8,000. Dr. LeTourneau has served as a member of the national board of directors (1960-64), and vice president (1962-64).

The Master Builder of Men Award was established in 1950 as the highest honor that Farm-House fraternity can bestow upon one of its alumni members.

## Non-Resident Tuition Case Heard By District Court

By ELLEN OSTHELLER  
ARGONAUT EDITOR

University authorities are awaiting the decision of the Third District Court in Boise following a case heard last Friday involving University policies on non-resident student tuition.

The case was brought by state legislator from Ada County, Lyle Cobbs, who charged the tuition at the University is not high enough for non-residents, and that he as a tax payer is being damaged because they are not paying "full cost" of their college education.

According to University Financial Vice President Kenneth A. Dick and Academic Vice President H. Walter Steffens, the case is being brought against the State Board of Education acting as Board of Regents of the University of Idaho. Attorney for the defense is State Attorney General Allen B. Sheppard, and Cobbs is being represented by Ted Eberle, Boise Attorney.

Steffens told the Argonaut a decision would be made by District Judge Merlin Young after the 10 day waiting period during which briefs in support of both positions would be written up and presented to him.

Tuition for non-resident students is now \$150 for registration and \$250 out-of-state tuition a semester. This is \$500 more a year for non-resident students than for resident students.

Non-resident tuition was increased last year from \$190 a semester and \$380 a year. Students who enrolled at the university prior to the tuition increase are not subject to pay the new rates, according to Dick.

The attempt to estimate "full cost" for non-resident students, or even for the student in higher education is not a logical basis for estimating tuition according to Dick.

"Any attempt to estimate average cost will be erroneous and lead to misjudgment," he told the Argonaut. He qualified the statement saying that educational costs for each student, varies according to the student, his curriculum and the number of credit hours he takes.

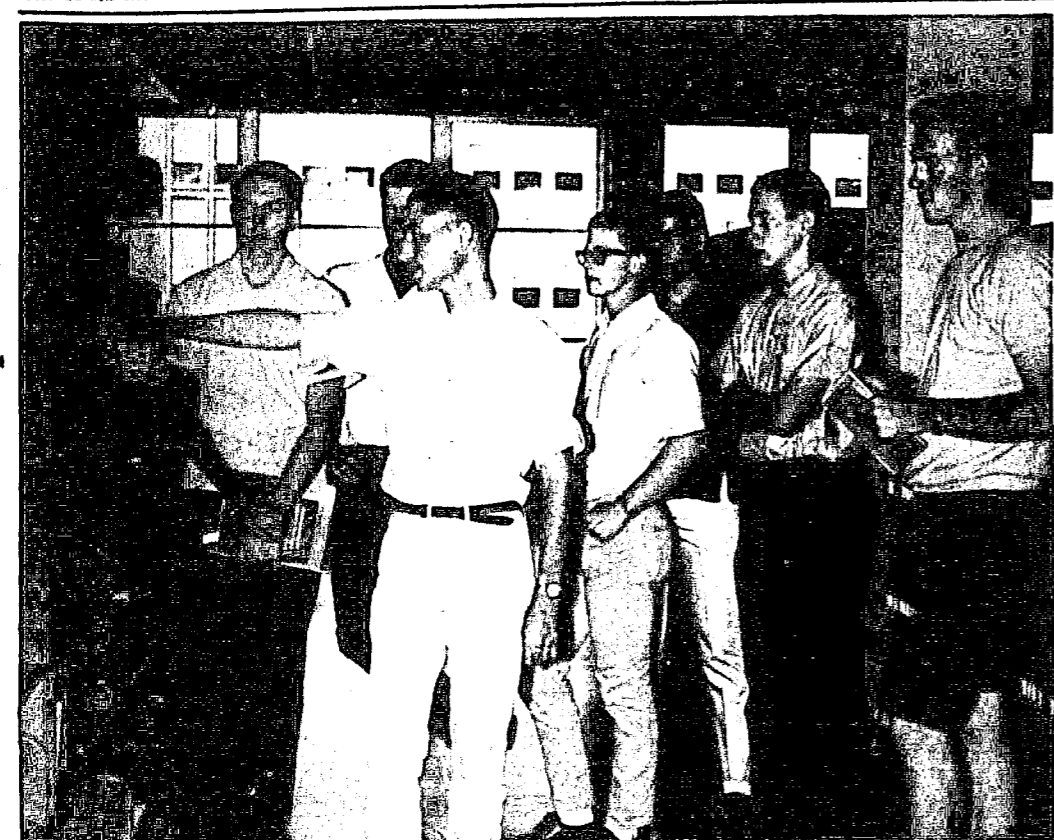
"The University contends in this case, that the total cost is difficult to determine. Expenses for each college are different, and you only lead to confusion when you try to approach the total or complete cost of education," he said.

Steffens told the Argonaut of four of the arguments which they used in support of their defense.

He said, (1) Any good university must have out-of-state students to give balance and for class fertility of discussion and outside of class learning. Fine students would be priced out of the market.

2. Calculation of the cost of education for any student is difficult to determine.

(Continued on Page 2, Col. 5)



STUDENTS MEET THE LIBRARY—Library tours were given Tuesday and Wednesday night for new students from each living group. Glenn Strait, academic chairman at Upham Hall points out some good guides for research to several interested students. Each living group on campus had a scheduled tour of the library. (Photo by Mike Berriochoa)

## On Calendar

SATURDAY  
CUP Policy Commission — 9:30 a.m.  
Century Club — 9 a.m.  
SUNDAY  
Angel Flight — 2:30 p.m.  
Century Club — 4 p.m.  
People to People — 3 p.m.  
MONDAY  
Student Faculty Interviews — 8 p.m.  
Open House Committee Interviews — 7:30 p.m.





# The Idaho Argonaut

God willing, we shall this day meet that old enemy  
Who has given us so many a good beating.  
Thank God we have a cause worth fighting for,  
And a cause worth losing and a good song to sing.

MANAGING EDITOR  
Mike Selbert

EDITOR  
Ellen Ostheller  
ASSOCIATE EDITOR  
Jean Monroe

NEWS EDITORS  
Julie Anderson  
Roger Anderson

Official publication of the Associated Students of the University of Idaho, issued every Tuesday and Friday of the college year. Entered as second class matter at the post office at Moscow, Idaho.  
Feature Editor: Karen Y. Wallace  
Social Editor: Bev Johnson  
Sports Editor: Dick Sherman  
Sports Writer: Tim Barick  
Chief Photographer: Mike Berriochoa  
Reporters: Helen Black, Ginny Eiden, Sandy Hut, Vincent Coleman, Chris Smith, Julie Stump, Jan Headrick, Linda Watts

Copy Readers

## Golden Fleece

By Ellen Ostheller, Jason 79

### Enrollment Down

Universities are changing. Most of them are becoming bigger and more specialized. But a surprising thing has happened to state institutions in the Pacific Northwest this year, and that is an unexpected drop in enrollment. Not only has the University of Idaho been surprised at registration figures, but similar decreases in student registration have been recorded at Portland State University, the University of Oregon and Oregon State University.  
Enrollment figures at Idaho have stayed the same as last year, 5,937 students, which is the same as the 1965-66 enrollment. But according to the "Portland Oregonian," universities in that state show a decrease of 38 per cent at Portland State University, 33 per cent at Oregon Technical Institute, 12 per cent at the University of Oregon, and 14 per cent at Oregon State. Washington State University students register for classes Monday and Tuesday and it will be interesting to see if the trend carried over to Washington schools.

### Small Schools Draw Students

The explanation for the situation in Oregon was attributed to the junior colleges and community colleges which are taking some of the enrollment from the larger institutions. This may be the case in Idaho, as the new College of Southern Idaho Junior College in Twin Falls has enrolled about 1,000 students. The new four-year college in Boise took on a rumored 1,800 student freshmen class and Lewis & Clark Normal in Lewiston was made into a four-year institution.

### Cost of Education

Another explanation for the lack of growth in the University this year may be the additional cost of the education, particularly for out-of-state students since the tuition was raised last year. According to Frank Young, admissions director, much of the decline in registration is attributed to non-returning students this year, who could have gone to these less expensive institutions.

### Non-Resident Tuition

Cost could certainly be a factor in determining the decline of students at the University, particularly for out-of-state students.

### Editorial

## Case For Small Colleges Applies To This University

The small college has become the stronghold for individualism and independent thinking. This is the premise taken by Look Magazine in its current issue with an article, "The Case for the Small College." In this examination of the college scene, Christopher S. Wren, Look senior editor, says that this fall "6,055,000 collegians will be squeezing into 2,207 accredited institutions of higher learning in the United States."

Students are now looking for colleges that will allow them to express themselves, get individual help and be a person, not just a number. They are also looking for schools where they can participate in some activities and become a well-rounded person, not simply a scholar unable to communicate with anyone outside the academic world.

Although Wren is presenting his case for the small, independent liberal arts college, his point is well taken and could easily be applied to the University of Idaho. The University is supported by public funds and must accept most Idaho students who apply for admission but it has not yet grown to the proportions of many state universities.

"The small college admittedly offers something of an ivory tower. But in an age of facelessness, the idea has renewed its appeal," the article states. To

us the ivory tower idea suggests small classes, free student-teacher debate during class and access to the professor at his office. Certainly the University has all of this to offer.

True, many freshman classes are large and so are some sophomore classes but most of the upper division courses offer the opportunity for students to express their opinions. In fact, most professors welcome comment in class and do everything but stand on their head to inspire debate.

When seniors in high school are looking for a college, the trend now seems to be a preference for an institution where they won't be "just a number."

Here the University seems to be able to combine the aspects of both the large and small college. Every student has a registration number and perhaps a seat number in the larger lecture classes. But many of the instructors know their students on a first name basis in the upper division courses. The Idaho student never feels like one more hole punched by an IBM machine.

Perhaps the main thing to be said about Idaho is that it's just the right size to offer the small school academic atmosphere and the larger school social structure and extracurricular activities. J.M.

## Voting Age Questioned By Georgia Congress

(ACP)—For the past 20 years, 18-year-olds in Georgia have been able to vote in local, state, and national elections. Now, Georgia Congressman Charles Weltner has a bill before Congress to lower the voting age to 18 and make it uniform throughout the country.

The University of Denver Clarion decided to follow up this lead and find what student sympathies are on the issue. After tabulating 364 written ballots in a poll conducted during student elections, it was interesting to note that student sentiment was so equally divided — 49.6 per cent were for the bill, 50.4 per cent against it.

The Clarion said in an editorial:

It seems clear, at least from indications on the University of Denver campus, that if students themselves do not have enough confidence in the ability of 18- to 21 year olds to vote intelli-

gently, this bill is headed for sound defeat.

### Club to Interview

Century Club, Idaho's Athletic Service Club, will hold interviews from 9 a.m. to 12 noon, Saturday at the Student Union Building and announce membership Sunday.

All freshman women interested are asked to fill out applications available in their living groups or the ASUI office groups or the ASUI office in the Student Union Building. These applications are to be taken to the interviews.

Further information can be obtained by contacting the Century Club representative in each living group or by calling Sue Jennings, Pine Hall.

The scene engaged coup get married years" (Boy support?)

Margaret M may have an work—for th may have re inagazine. Th proposed that ferent types ferent goals.

First of a new type of ica. The two ward sex and

"American and eating, a come to believ people to pos fair nor feasi

And yet a to sex for ev as financial parents, and sequent emot

Our other lieve in comm that they ar change as th their marria with divorce ing a commit

The first vidual" marr a "student" n

"Such a r union in whi each other as remain togeth gation to eac would be eco would be per supporting t meanwhile al lives. They w each other r serious busi

Yet this did not worl break that th marriage cou partners at a

The seco marriage. Th establishing love and con previous ind bility now la

Parental contract and would be req bility as well

Of course write a pres society.

## Dear Jason

### Vending Machine Civilization

EDUNDAYC FABYIM  
Some dimes  
in the slot,  
And anything  
from coke to rootbeer  
Spews down your throat!

A penny  
in the slot,  
And, my God!  
a million levers change po-  
sitions  
And you're 200 pounds heavy.

One dime  
in the slot,  
And you stand — confused,  
Ice cream, crackers or  
candy?  
No, just press "Coin Return."

A quarter

in the slot,  
And the "boom-boom" (from  
the jukebox)  
sends you and your date  
Hurrying down to the Dipper.

Some money  
in the slot,  
And everything  
from laundry to dating

Is fun for the vending machi-  
ne.  
Oh, this vending machine civi-  
lization.

How fascinating, how excit-  
ing!  
To watch with admiration—  
fear

As the ubiquitous vending  
machine does everything for  
MAN.

### Moscow Resident Hits U-I Activities

Dear Jason:  
From reading the University of Idaho Argonaut of Sept. 20, '66 one could think the 3 R's have been changed to at least 4 P's, 3 of them being Friverty, Foolishness and Foolball.  
Quote, headlines: "Activities Start with Nightgowns," "New Hours Voted for U of I Women," "Co-Ed Capers," "Twirler Try-outs," etc.

Regarding that "Parade" of freshmen women in pajamas, will the deans lead the procession in old-fashioned nighties? Who's running this madness, Playboy Magazine or some temporary escapees from the head set in Orofino?

Jesse Merlan  
P.S. I just thought of the 4th F. F as in grade achieved in neglected studies.

### HERE'S MORE ABOUT Forum

Paul Bianton and Robert Timm, Tri Delta.

Willis Sweet at Pi Phi with Sid Miller and Ellen Ostheller, Pi Phi.

Farmhouse and TKE at Kappa Alpha Theta with Mrs. Ernest Hartung and Margie Felton, Kappa.

Pi Kaps and Phi Taus at Gamma Phi with Dr. Robert Hosack and Julie Pence, Gamma Phi.

ATO and Kappa Kappa Gamma with Dr. Duane LeTourneau and Mike Wicks, ATO.

Delta Gamma at Beta Theta Pi with Dr. Harry Caldwell, Doug Boyd, Beta, and Jean Monroe, Delta Gamma.

Kappa Sig at Alpha Chi with Mr. Eric Kirkland and Ann Baker, Alpha Chi.

Houston at SAE with Dr. Ernest Hartung, Gary Albin and Joe McCollum, both SAE.

Delta Chi with Dewey Newman and Gary Chipman, Delta Chi.

Sigma Nu with Miss Erma Jackle and Garry Woodman, Sigma Nu.

Delta Tau Delta with Dr. Horvon Snider, Dick Rush and Randy Byers, Deltas.

### Here's More About Tuition Case

3. It costs no more to educate an out-of-state student than a resident student, and the institution can add those additional students with no extra cost once the initial investment for financing the education has been made, and

4. Fifty per cent of the graduate school enrollment is made up from non-resident students, who can get their best education in post graduate work at a different institution than that which he received his undergraduate degree.

Dick told the Argonaut that if the University lost the case it would be appealed to the State Supreme Court.

"We know of no state university or land grant institution in the United States that attempts to collect from non-residents the total cost of education," he said.

### HERE'S MORE ABOUT Budget

Commerce, Rush explained, ASUI Vice President, Art Crane, Graham, proposed that the ASUI mail man service be discontinued and that all mail be sent once a week through the U.S. Postal Service. His motion was passed.

Homecoming activities were also discussed, along with Executive Board transportation. No decisions were made in these areas.

### STUDENT NEWS OF RECORD

JUSTICE COURT  
William D. Dettelsen, 19, Borah Hall, stop sign violation, fined \$15.



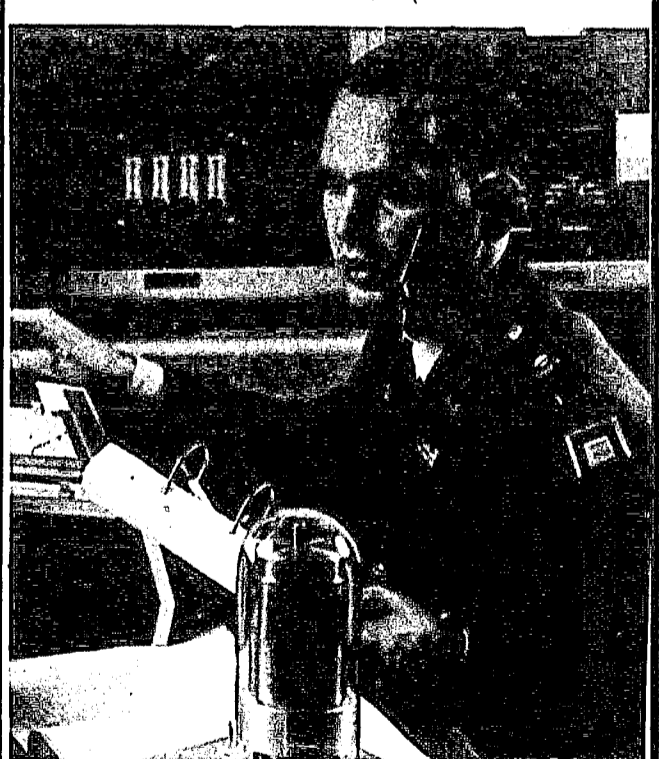
Make the right moves  
You've discovered the find of the year, and she's actually agreed to go out with you. Don't leave anything to chance. Take her to a fancy supper club and really impress her with your Cricketer Hopsack suit. She'll like the bold textured look, and the vest gives you a look of authority. Go ahead, it's your move.

CRICKETEER®  
Summa Six-Ply Hopsack Suit.  
CRICKETEER SUITS  
From \$50

## Creightons

MOSCOW

## MAJOR IN LEADERSHIP THROUGH THE ARMY ROTC PROGRAM



- \* Earn a college degree in a field of your choice.
- \* Qualify for a commission at the same time.
- \* Receive \$40 per month in your Junior and senior years.
- \* Fulfill your military obligation as an officer.
- \* Gain valuable leadership and technical experience.

Information on the Army ROTC Program May Be Obtained From Room 101, Memorial Gym.

The best of the bold look ...

Handsome shades, handsewn vamp detailing in a classic moccasin with the rugged look that's all the rage this season.

Sizes 5 to 10  
3A to B

\$12.95  
Trotter

NATURALLY  
oldmaine trotters  
DAVIDS  
DEPARTMENT STORE - MOSCOW

## BUY A MUM

for HOMECOMING

\$1.50 Mortar Board

Off Campus: Contact Lynne Rock—6-223



# FORUM Or Agin'em

By Karen Longeteig

The scene: moonlight on campus. The characters: an engaged couple. The dialogue: (Girl) "Oh Horace, let's get married this Christmas instead of waiting two years!" (Boy) "Get serious! And blow your financial support?"

Margaret Mead, noted anthropologist and social critic, may have an answer—or at least a direction in which to work—for this perennial student problem. Some of you may have read her article in the July, 1966, Redbook magazine. The article, entitled "Marriage in Two Steps," proposed that society work toward just that—two different types of marriage, each legal and each with different goals.

First of all, Miss Mead discussed why she thought a new type of marriage was necessary in modern America. The two main points were present-day attitudes toward sex and commitment.

"Americans have come to regard sex, like sleeping and eating, as a natural activity," she said. "We have come to believe also that asking physically mature young people to postpone sex until their middle 20s is neither fair nor feasible."

And yet accepting teen-age marriages as a solution to sex for everybody brings up greater problems, such as financial dependence, babies born to still-immature parents, and the break-up of these marriages and consequent emotional damage for all concerned.

Our other attitude is toward commitment—we believe in commitments but we do not, as formerly, believe that they are irrevocable. We accept that people may change as they grow, and since they may grow out of their marriage partners, we accept divorce. And yet with divorce comes self-recriminations for not maintaining a commitment that has failed.

The first kind of marriage would thus be "individual" marriage, or as Miss Mead admitted, more often a "student" marriage.

"Such a marriage," she said, "would be a licensed union in which two individuals would be committed to each other as individuals for as long as they wished to remain together, but not as future parents. Their obligation to each other would be a personal one, and neither would be economically responsible for the other one. It would be perfectly allowable for the parents to go on supporting them while they finished their education, meanwhile allowing the couple to grow into each other's lives. They would be able to get to know and adjust to each other really well before they settled down to the serious business of raising a family."

Yet this marriage would allow them to part, if it did not work out, without the bitterness and heart-break that there would be if children were involved. The marriage could be nullified by mutual consent of the partners at any time.

The second type of marriage would be "parental" marriage. The main purpose of this marriage would be establishing a home and raising a family. The partners' love and commitment to each other, proven in their previous individual marriage, would provide the stability now lacking in so many homes.

Parental marriage would be both more difficult to contract and more difficult to terminate. The partners would be required to show evidence of fiscal responsibility as well as of their successful individual marriage.

Of course Miss Mead realizes that "no one . . . can write a prescription or make a blueprint for a whole society."

## Space Available in Halls, Fraternities Not Full

The effects of the limited enrollment this fall does not seem to have made much of a difference to the greek fraternities on campus, according to new associate dean of students, Dowsy J. Newman, and dean of women Marjorie M. Neely.

The men's rush total was short of the total pledged last year, however, Newman said. Fraternity rush saw 374 men pledged last year and 316 this year.

"But there are about 400 less freshmen this year than we had anticipated," he said.

"I was disappointed in rush until I found how much the university enrollment is down—now I feel better," he said.

Newman said that the houses were short some men, and could have comfortably taken about 50 more. He said that only seven men were dropped from rush completely.

Dean Neely said that fewer girls went through rush this year than last. She said 159 were pledged and that 200 had signed up for rushweek activities. She said this is a decrease from the total last year when 260 girls signed up for rush and 185 were pledged.

No explanation was offered by either Dean Neely or Newman. Mrs. Neely said, however, that she thought the decrease followed the general enrollment pattern.

Director of Housing Robert T. Angel Flight Finalists Named

Nancy Andrus, Gamma Phi, Angel Flight Colonel, announced that 16 Air Force sponsor finalists were chosen Tuesday. The finalists were interviewed Wednesday and tapping is seen for the near future.

Finalists include Judi Hannah, French House; Marj Heitman, Forney Hall; Diana McGill, Houston; Judy Vincent and Robyn Remakus, Alpha Gamma Delta; Sharon Watts, Hayes; Miriam Irwin, Tri Delta; Joyce McCann, Carter Hall; Priscilla Bryson, Kappa; Karen Clements, Alpha Phi; Judy Westberg and Cathy Connor, Delta Gamma; Sharon Williams, Pi Phi; Carolyn Steele, Theta; Nancy Coe, Gamma Phi; and Melinda Weeks, Campbell.

Angel Flight are the women Air Force ROTC sponsors. Their purpose is to promote interest in the Air Force among college men. This year they plan to march in the Homecoming parade and to drill during half time at University basketball games.

## Non-Resident Students Fewer

Out of state students are decreasing in numbers, the graduate school is growing, and the men will get a slightly better break, incomplete registration statistics reported.

Preliminary statistics showed that the number of out of state undergraduate students declined for the fifth straight year to 18.7 per cent of the enrollment.

The percentage of out of state students in 63 was 22 per cent; it declined to 21 per cent in 65, and to 20 per cent last year.

The out of state students were 183 behind predictions. This was one reason for the failure of the calculations.

While undergraduate enrollment was exactly paralleled last year's, the graduate school registration has leaped.

Compared to 441 last year, 467 have already enrolled this year, with a good chance of meeting the predicted 500 mark.

If the final figure reaches the 500 level, the graduate school will have grown by 13 per cent.

The number of returning women students was 45 under the prediction, while returning men was nearly 200 under, and new men students were over 200 under the prediction.

Nevertheless, the 1,735 women to 3,680 men, still gives the women a huge advantage.

"Since the women are returning and the men are not, it would seem that the war in Vietnam is having some effect," F.L. O'Neill, registrar said.

## Campus Briefs

The Associated Foresters will hold their Annual Steak Fry tomorrow at Meadow Creek. Free rides will be available at the Forestry Building at 9:30 a.m. The fry is free for members, \$1.50 for guests, and \$2.50 for nonmembers.

The Open House Committee will hold interviews Monday from 7:30 to 8:30 p.m. Applications can be picked up at the ASUI office and turned in at the office or at the time of the interview.

Tryouts for Pre-Orchestra, a modern dance group, will be held Tuesday and Wednesday at 4 p.m. in the Women's Gym. Those wishing to try out should sign up at the Women's Gym.

The Blue Bucket will present a Hawaiian Luau in the Student Union Building Sunday from 5 to 7 p.m. Prices are \$1.50 for students, and \$2 for adults. The Luau will feature Suckling Pig with marinated Pork, Lomi-Lomi Salmon, and Shrimp Tempura.

The Society of Automotive Engineers will meet at 7 p.m. Monday in the SUB to elect officers to fill vacancies.

Mr. Sid Miller, director of the placement bureau, will speak to the Student Idaho National Educational Association Tuesday at 7 p.m. in the Galena Room of the SUB.

Dr. Charles O. Hower will speak to the Student branch of the American Chemical Society on "Nuclear Chemistry and Amsterdam" at 7:30 p.m. Tuesday in Physical Sciences Room 111.

## U-I Campus Highlights

Slumber parties, national convention reports and house elections highlight campus news this week. Mrs. Kathleen Zwick, Tri Delta housemother, was kidnapped by the Phi Tau's, Fred Gray heads the Theta Chi pledge class. French House coeds have a new head resident, Mrs. Mildred Lucas, Spokane, Wash. The Pi Kapp's won the man-milage trophy at national convention. The University campus starts another big year of social activities.

DELTA DELTA DELTA Tri Delta Juniors held a slumber party in the chapter house for the new pledges recently. The following afternoon the sophomores took the new pledges to the park for a picnic.

A few days later, the Phi Tau's kidnapped the Tri Delta housemother, Mrs. Kathleen Zwick, demanding entertainment by the pledges to redeem her. The next evening the Phi Tau's returned the favor with a serenade for one of their pledge pins, captured by the ever-alert housemother.

THETA CHI This newly elected officers of the Theta Chi pledge class include Fred Gray, president; Bob Worsley, vice president; Joe Carrara, social chairman, and Jerry Tucker, song leader.

PI KAPPA ALPHA Twelve men from Zeta Mu chapter attended the 98th annual convention of Pi Kappa Alpha this summer at St. Louis, Missouri. The convention was attended by nearly 1000 Pikes from across the nation. The product of the number of men times the number of miles traveled from this campus, brought the man-mileage trophy to the newest Pike chapter, Paul Bishop, president, was Zeta Mu's official delegate. Prior to the convention six of the twelve men attended the national leadership school held at Missouri School of Mines, Rolla, Missouri.

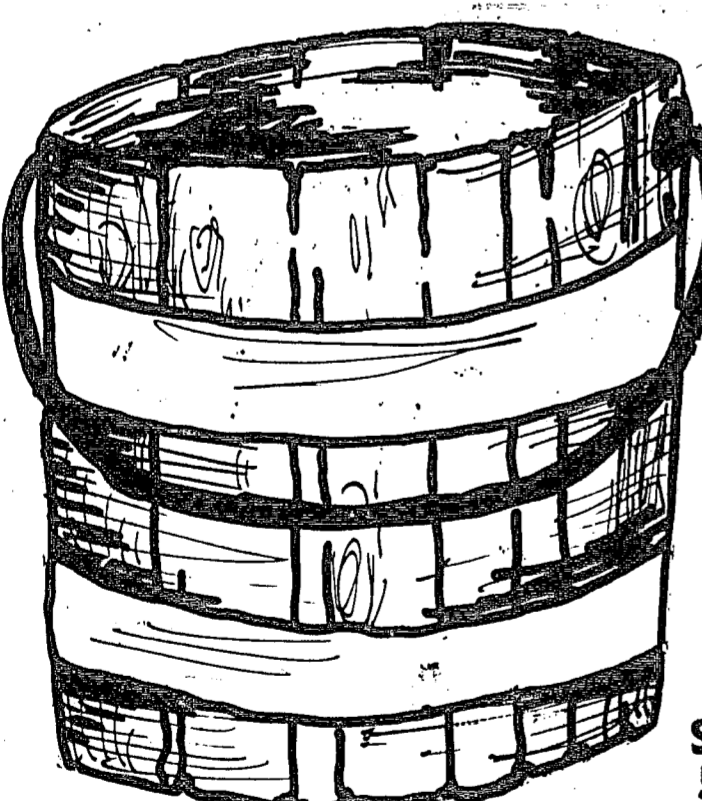
## Rings 'N Things

**PINNINGS**  
KUMPE-GILTZOW The pinning of Sheila Kumpe, French House, to Alan Giltzow, Theta Chi, was announced Monday night by Carol Hohenberger at a French House fireside.  
GILLESPIE-HAYNES A white candle surrounded by red carnations was passed at a recent French House fireside while Penny Sheldon read a poem. Carole Barrett then announced the pinning of her roommate, Kaye Gillespie, French House, to Rick Haynes, Theta Chi.  
**ENGAGEMENTS**  
SEUBERT-HOOKER A blue candle encircled with white roses was passed at a fireside to announce the engagement of Sally Seubert, DG, to Larry Hooker, ATO.  
**MARRIAGES**  
GOULD-WATTENBARTER A June 18 wedding ceremony at the Council Congregational Church united Carol Gould, French House, to Steve Wattenbarter, WSU. The couple now reside at Pullman.  
LONDON — DUNN St. James Episcopal Church, Payette, was the scene of the Aug. 27 wedding of Kathryn Jean London, Theta, and James Frederick Dunn, Moscow.  
BUYNY — KELLEY Susan Elizabeth Buyny, Tri Delta, and Richard Kelley, Lambda Chi, were married in Boise, June 18, and are residing in Moscow to continue studies.

Flowers for that best gal...  
BIRTHDAYS  
PINNINGS  
ENGAGEMENTS  
PARTIES and other occasions  
That Perfect Gift...  
Fraternity Mugs...  
for that Special Guy!  
Sorority Cups and Saucers  
for your Dream Girl!  
CRESTS FOR ALL HOUSES  
Moscow Florists & Gifts  
Two locations to serve you.  
112 W. 6th Phone TU 2-1155  
Hotel Moscow Lobby Phone TU 3-8062

# The BLUE BUCKET

Presents



# SUNDAY

SEPT. 25  
5-7 p.m.

## HAWAIIAN LUAU

MENU

- Suckling Pig with marinated pork
- Shrimp Tempura
- Lomi Lomi Salmon
- Baked Yams
- Fresh Cracked Coconut with fruit
- Cucumbers Namasu
- Haupia (coconut pudding)
- Banana Muffins

Sponsored by the Blue Bucket Committee

\$1.50 Students      \$2.00 Adults

### U-I 4-H Club to Meet

The University 4-H Club will meet for the first time Tuesday night at 7 p.m. in the Student Union Building. New business will include election of officers and a possible week-end outing. Interested students are invited to attend, according to Allan Ravenscraft, Campus Club.

Let...  
**Hutchison Photo**  
Serve you for:  
Personality Portraits  
Gem Pictures  
House Groups  
Dances  
Phone TU 2-7261



### RCA VICTOR WEEK

Many, Many Specials  
New and Used Furniture  
at  
**SECURITY FURNITURE**  
527 So. Main  
Phone TU 2-1558

# You don't have to be a genius to work at G.E.

Near genius is okay.

A near genius with drive, stamina and imagination, that is. And it doesn't really matter what subject you're a near genius in. General Electric is looking for top scientists — and for top graduates in economics, business, law, accounting and the liberal arts. Nobody who joins G.E. is going to feel cramped. This is a worldwide company, and it makes over 200,000 different products. So there's plenty of room to feel your strength — and in some of today's most challenging fields: transit design, urban lighting, jet propulsion, computers, electronics, aerospace, you name it. Challenges like these have raised a new generation of idea men at G.E. If you're good enough to join them, you'll find responsibilities come to you early. Your talents are recognized, your work is rewarded — in money and in opportunity. This time next year, you could be on your way. Talk to the man from G.E. next time he visits your campus. And don't be surprised if he's young, too. At General Electric, the young men are important men.

Progress Is Our Most Important Product  
**GENERAL ELECTRIC**



# Vandals Set To Tangle With MSU This Weekend

## Kenworthy

Moscow  
Tonight thru Saturday,  
7-9 p.m.

GRANLEY COMPANY PRESENTS  
**CARY GRANT**  
**SAMANTHA EGGAR**  
**JIM HUTTON**  
SOL C. SIEGEL  
WALK DON'T RUN  
A COLUMBIA PICTURES RELEASE

Sunday—All Next Week,  
7-9:10

## Modesty Blaise

20  
COLOR BY DE LUKE  
MONICA VITTI  
TERENCE STAMP  
DIRK BOGARDE  
HARRY ANDREWS  
MICHAEL CRAIG

## Nuart

Moscow  
Tonight thru Saturday, 7-9 p.m.

**Sean Connery**  
**Joanne Woodward**  
**Jean Seberg**  
**"A Fine Madness"**  
TECHNICOLOR® From WARNER BROS.  
Admission \$1.00

Sunday thru Tuesday,  
7-9 p.m.

The World's Immortal Adventure!

## Beau Geste

TECHNICOLOR  
A UNIVERSAL PICTURE

## Audian

Pullman  
Tonight thru Saturday, 7-9:10

**What did you do in the War, Daddy?**  
Admission \$1.00

Sunday—All Next Week—  
7-9:10

## Modesty Blaise

MONICA VITTI - TERENCE STAMP  
DIRK BOGARDE - HARRY ANDREWS

## Cordova

Pullman  
Tonight thru Saturday, 7-9

GRANLEY COMPANY PRESENTS  
**CARY GRANT**  
**SAMANTHA EGGAR**  
**JIM HUTTON**  
SOL C. SIEGEL  
WALK DON'T RUN  
A COLUMBIA PICTURES RELEASE

Sunday—All Next Week, 7-9

## Sean Connery

**Joanne Woodward**  
**Jean Seberg**  
**"A Fine Madness"**  
TECHNICOLOR® From WARNER BROS.  
Admission \$1.00

Sunday—All Next Week, 7-9

## Big Sky

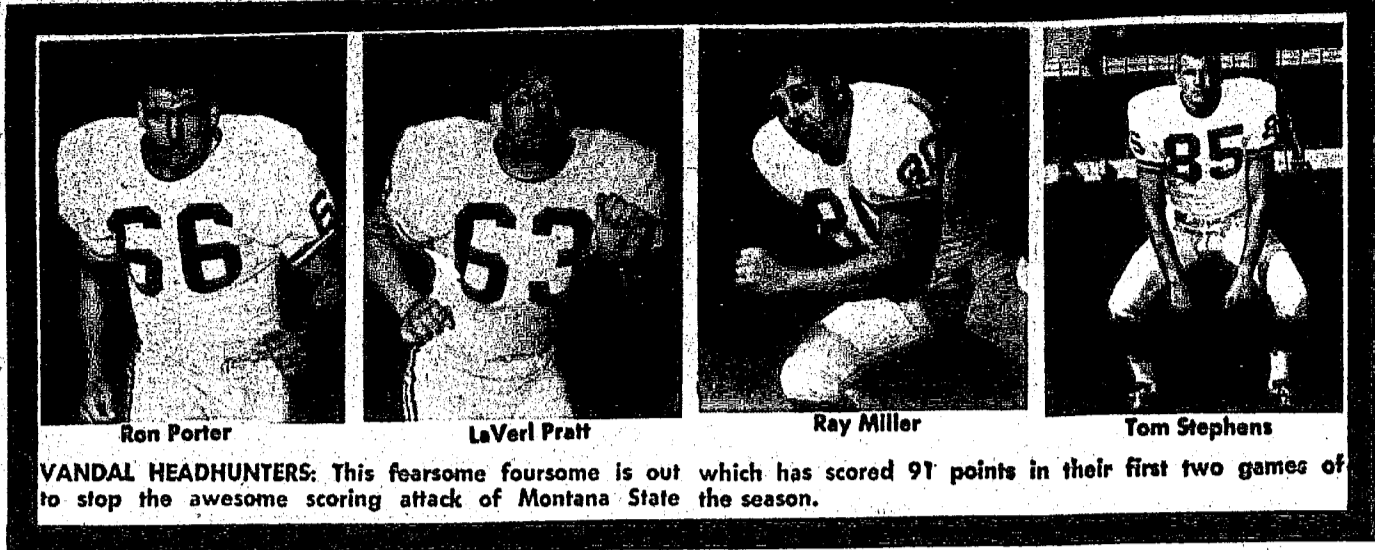
PULLMAN MOTOR MOVIE  
Friday, Saturday, Sunday

## The Flight of the Phoenix

HANES STEWART - RICHARD ATTENBOROUGH  
PETER FINCH - HARDY KRUEGER - ERNEST BORISCHKE  
COLOR BY DE LUKE  
A COLUMBIA PICTURES RELEASE

## How to Succeed in Business Without Really Trying

MICKEY ROONEY  
ANNETTE FUNICELLO  
Gates Open 6:30  
Show at Dusk



**VANDAL HEADHUNTERS:** This fearsome foursome is out to stop the awesome scoring attack of Montana State which has scored 91 points in their first two games of the season.

## Many Top Prospects On 1966 Frosh Team

Coach Steve Musseau and his staff greeted a fine looking frosh football squad for their first drills Tuesday and the list contained a number of top high school stars from the Inland Empire, and a group of new names from places as far away as Houston, Texas, Wassau, Wisc., and Baton Rouge, La. Musseau said that this year the frosh team would be coached by his complete staff, including graduate assistants and no official coach would be designated as frosh mentor. Herb Adams will officially handle all of the freshman responsibilities, Musseau added. Leading the list of possible bright stars are Joe Tasy from Houston, Texas and Roosevelt Owens, another Houstonite. From Spokane, Wash., the Vandal frosh team will include the former high school stars: Jerry Hendren and Ed Clauson and from the Panhandle of Idaho there are John Jacobson and Pat Flynn of Coeur d'Alene, Ron Davis of Post Falls and Sandy Kelson of Wallace. In the Boise Valley area there are Gordon Deward of Meridian and from Swan Valley there is Delloyd Jacobson. Moscow adds Don Anderson, Jim Clark, Rick Pierce, Tim Spagnoletti and Steve Long. Steve Olson of Lewiston is considered a prime prospect and from Deary there are Ed Lundstrom and Ron Rueppel. Rudy Linterman of Calgary

## Idaho Harriers To Start Drills

Coach Doug MacFarlane of the Idaho cross country team greeted his team for the first time early this week and the first workouts for this season are underway at the present time. The team will open their season at Pullman, Wash., against the WSU Cougars on Oct. 5. Leading the list of candidates for the team are Ted Quirk, junior; Mike Anderson, senior; and Rod Wither, sophomore. These three runners were on MacFarlane's Big Sky Championship team in 1965. New candidates that will add plenty of class and depth to the team include: Larry Bond, frosh, Spokane; Terji Skogland, junior, transfer student from Norway; Gary Johnson, frosh, Meridian; Clair Moore, frosh, Moscow; Rich Fuehrer, frosh, Boise; and Bruce Swayne, junior, Nampa. Bond was a member of the John Rogers high school championship team in Spokane last season and is regarded as one of the top prospects in the nation. MacFarlane said that the candidates will workout immediately on the Idaho campus cross-country route and time trials are slated for the latter part of this week. MacFarlane added that a schedule that includes meets with the top schools taking part in cross country is as follows: Oct. 5, Whitworth and WSU at Pullman; Oct. 8, Idaho State at Pocatello; Oct. 15, Whitman, British Columbia University at Walla Walla; Oct. 22, Idaho Invitational at Moscow; (VSVU, Gonzaga, Whitworth, Eastern Washington College); Oct. 27, WSU, Gonzaga

## In Control

LOS ANGELES (NEA) — One of the reasons Don Sutton is such a success as a rookie pitcher with the Los Angeles Dodgers is control. In his first year of organized ball in 1965 he pitched 249 innings at Santa Barbara and Albuquerque and walked only 45 batters.

## Success Story

HOUSTON (NEA) — Outfielder Jimmy Wynn of the Houston Astros had the best stolen base percentage in the National League in 1965. In 47 attempts, Wynn was successful 43 times. That's a percentage of 91.5.

## Alumni at WSU Name Leaders

WASHINGTON STATE UNIVERSITY — Frank F. Hooper, Seattle; Herbert Hemingway, Garfield; and Barry K. Jones, Spokane, will head Washington State University Alumni Association activities during the coming year.

### VARSITY THEATRE

OPEN FRI., SAT. and SUN. — Starting at 7:40  
"THE SANDPIPER"  
In Color  
Richard Burton—Liz Taylor  
"THE CHALK GARDEN"  
In Color  
Deborah Kerr—Haley Mills  
2 (Two) Cartoons  
Adults—90c Children—Free

### THE First Security Bank

IS THE WISEST CHOICE FOR SAVINGS ACCOUNTS CHECKING ACCOUNTS and all your banking needs. THIRD AND MAIN STREETS Mombor Federal Deposit Insurance Corporation

### ALFRED HITCHCOCK'S NEW AND ALTOGETHER DIFFERENT SCREEN EXCITEMENT!

ANTHONY PERKINS  
VERA MILES  
JOHN GAVIN  
MARTIN BALSAM  
JOHN MCINTIRE  
JANET LEIGH  
MARION CRANE

### DEVIL DO

Sub Borah Theater  
Shows: 7 p.m. and 9 p.m. Friday  
7 p.m. Saturday  
7 p.m. Sunday  
ADMISSION: Single—35c  
Couples—65c

## INTRAMURALS

- 9-19-66  
SH over SnH—18-0.  
GH over CH—6-0  
LH over McH—8-0.  
LH 2 over McH2—26-0.  
TMA over SnH2—Forfeit.  
WSH over BH—13-6.  
GH2 over CH2—7-0.  
GrH over CC—19-6.  
WSH2 over BH2—14-0.
- 9-20-66  
TKE over PKT—18-6.  
TKE over PKA—18-6.  
PDT over PKT—12-6.  
SC over DS—4-0  
SN over DC—12-0.  
LCA over FH—38-0.  
PGD over LDS—19-0.  
TC over DTD—13-12.  
BTP over ATO—12-6.
- 9-21-66  
McH over SH—30-0.  
WSH2 over SnH2—46-6.  
WSH over SnH—19-0.  
BH over GrH—12-7.  
GH2 over BH2—7-6.  
TMA over McH—20-0.  
GH over CC—7-0.  
UH2 over CH2—6-0.  
UH over CH—33-0.

## Hey, You!

Sports Awards  
Athletic Director, Paul Ostyn, announced today that spring sports award letters may be picked up in Room 138 in the athletic department.

FOR SALE: 22' Trailer House. See Lot #17, Terrace Gardens Trailer Court, south of Moscow.

WANTED: Lead guitar player to play popular music in experienced band. Contact John Crowser at 2-1193.

## CLASSIFIED

LOST: A Pi Phi pin—An arrow with aquamarines and pearls. Please call Kitty Angell, 2-1594.

## USED CARS

- 1965 Mustang Hardtop 200" 6 cyl., 3 spd. \$2295
- 1965 Ford Galaxie 500, 2 door HT, V8, Automatic, PS, Gold \$2395
- 1964 Ford Galaxie 500 4 door, HT, V8, Automatic, PS, PB \$1895
- 1962 Ford Galaxie 500, 2 door HT, V8, Automatic, PS, white \$1245
- 1960 Rambler Custom 4 dr. Wgn. stick \$695
- 1958 Chev Bel Air 4 dr., V8, Automatic \$495

## Delta Ford Sales

WELCOME STUDENTS  
SCOTT'S FLOWER SHOP  
Where Your Credit Is Good!  
AM & PM DELIVERIES  
Special Prices on Large Orders!  
314 S. Main

## Bobcats To Throw Strong Scoring Attack At Idaho

By Tim Rarick  
Arg Sports Writer  
Nobody knows better than head coach Jim Sweeney that the "honeymoon is over for the Montana State football team." This is what he told his charges this week in an effort to prepare them for the Vandal invasion.

"The football season begins this weekend for us," said Sweeney. "We are aware that Idaho is out to win their second Big Sky championship, and heavily favored to do so." Sweeney warned his Bobcats. Not only tested in their first two games this year against South Dakota State and Portland State, the Bobcats did however, show a fast, strong, scoring ball club. In those two games they tallied 91 points as compared to a mere 13 by the opposition. Having the advantage of playing one more game than the Vandals, MSU has been able to work out most of the bugs in their attack. Primed, healthy, and with the memory of their crushing defeat at the hands of Idaho last year fresh in their memory, the Bobcats are surely anxious to even things up a little. Statistically, MSU is a vastly improved ball club. Coach Sweeney lost only 8 players off of last year's 43 man squad, meaning they are experienced and stronger in every position. Only one man, Ray Foley, the quarterback, is lost in the backfield. However, sophomore Dennis Erickson has proved in the first two ballgames that he is quite capable of directing the Bobcat attack. Running back Don Haas has been the primary carrier of the offensive load, and so far this season has already rushed

the last two years and is a proven vet. Even more of a serious threat to the Vandals than the likes of Haas, Purdom or Smith, is a man who only appears on the field a few times a game. But when he does it usually results in an added 3 points for the 'cats. His name is Jan Stenerud and according to those who have witnessed his soccer type ability, is regarded as the finest field goal specialist in the United States. Stenerud, who also is a sure bet on conversions, holds the NCAA record for the longest field goal booting one against Montana last year that covered 59 yards.

at Pullman; Nov. 5, Montana, Montana State at Missoula; Nov. 12, Big Sky Championships at Bozeman. The annual high school invitational cross country meet will be held at Moscow in conjunction with the Idaho Invitational meet on Oct. 22.

## WEAR PACIFIC TRAIL'S COLOSSAL CORD SURCOAT



Colossal "Trail-wale" corduroy takes on a real western air in "Laredo"... three-button surcoat for town and country wear. Smart and warm, with shearing pile lining, collar and pocket trim. Strikingly rugged for all of its luxury look! Loden, brown, caramel, burgundy. Dry clean. Sizes 36 to 46. \$20.00.

## MYKLEBUST'S

MOSCOW, IDAHO



## "GOOD, BETTER, BEST..."

never let it rest... 'Til the good is better and the better is the best! That old adage may sound a bit out of date in this modern day and age but it does say... in a few well chosen words... just what Marketime Drugs tries to do... for you... at all times.

Marketime Drugs tries to give their customers nothing but the best: the best products for the best prices and the best service, in all departments. We, at Marketime, want to welcome you all to our store. We are always pleased with the confidence shown by our steady customers when they keep coming back for all their drug, prescription and sundry needs, year after year and we are always proud and happy when a new customer enjoys our service and appreciates our efforts in his or her behalf so that they, too, become regular patrons.

So, if you want the best for yourself and your family... give Marketime Drugs a try. We'll do our best to satisfy you, at all times.

- PRESCRIPTIONS
- HOUSEHOLD SUPPLIES
- SPORTING GOODS
- SCHOOL SUPPLIES
- MAGAZINE SERVICE
- PHOTOGRAPHIC EQUIPMENT
- TOBACCOS & SMOKING ACCESSORIES
- COSMETIC CENTER

Your Complete Departmentalized Drug Store

## MARKETIME DRUGS

MOSCOW'S Super Drug STORE  
209 EAST THIRD - MOSCOW, IDAHO - PHONE TUCKER 2-1181

Five Id... coming Qu... Houston; A... Ruth McCa... The que... will be cro... Campbell c... also ride in... be introduc... troduced a... Miss McC... five foot, six... brown eyes... Orofino major... is the daughter... Charles J. Mc... pus activities... ident of Spur... pha Lambda... sophomore in... ters and Sci... Moment, Cent... representative ar... scholarship w... terested in s... and making po... and foreign... plans include... to work on... come an air... teach English... dren. A junior m... gy, Miss Rut... ter of Mrs... of Boise. T... inch hazel e... served as S... is a Little S... was a finali... Queen, is an... ing group an... of Century Cl... back riding a... to become a... dary schools... years. Miss Gres... past year s... Paris, is a... senior with b... eyes. The F... daughter of... Gresly of B... ATO Esquire... Queen, an Ar... years, memb... Delta and C... and is first... her living bro... and water s... traveling an... tend graduate... Blonde hair... McCall is a... senior major... education. S... of Mr. and M... Call of Bois... Navy Color... for Gault Sn... transferred to... Junior Colleg... After graduat... to go into a... while and th... Her hobbies... snow skiing... and swimming... Miss Long... of Mr. and... teig Jr. of C... for English... music, dram... writing fictio... On C... Vandal TU... Model U.N... Big Name I... mittee — 7 p... Sub Films... Frosh Facu... S.I.E.A. —... C-Cap — 7... I.K.'s — 8... ICEP — 7... WE... Pre-Game... Election C... KUOI — 6... Spurs — 5... A.W.S. —... Mortar Boa... Homecomi... 12 noon... Homecomi... 7:30 p.m... Alpha Phi