

# Legislators Scrap Over Statements About ISU

By CHRIS L. SMITH  
Argonaut Political Writer

The political fires raged hot in Boise Monday among charges and countercharges of legislators playing politics with the state's University appropriations.

Speaker of the House Pete Cenarrusa, R-Carey, said, "No one in the legislature has done more for Idaho State University than I have," in answer to critics' charges that Cenarrusa should retract his statement that ISU's appropriation may suffer because of its criticism of Governor Samuelson's education policies.

The controversy was touched off Friday when Governor Donald W. Samuelson said he believes ISU and the University of Idaho "have gone too far in the liberal arts," and should give more

emphasis to vocational and technical training.

Samuelson's remarks roused the ire of the Campus Young Republicans at ISU, and precipitated a statement by the club declaring, "The Governor is out of touch with higher education and its values in Idaho."

The remark fell hard on Cenarrusa's ears and Saturday, he told the House, "If that area is going to make these comments, it will be hard pressed when the budget figures are out. These are just the political facts of life and I've been around for a long time."

Cenarrusa continued his remarks saying, "Right now in as much as the Pocatello area has been making comments concerning this point, liberal arts versus vocational education, and the University of Idaho is leaving to the legislature the burden

of government to determine the goals of the institutions of higher learning, which I think is right and proper."

The President of the ISU Young Republicans answered Cenarrusa by charging him with political blackmail. The ISU leader said, "This is a rather expensive price to pay for freedom of opinion and speech."

He asked, "Are we to infer

that those who do not speak out are to be rewarded with financial plums from the legislative branch of state government, while those who express opinions in public debate are faced with financial blackmail."

Monday in Boise Cenarrusa answered those charges of blackmail. The house speaker noted that he had been chairman of the committee that had railroad-

ed the state building fund through the legislature.

"At that time I was called arbitrary and capricious," Cenarrusa said, "but Idaho State has profited from the permanent building fund."

When asked what he thought of the ISU Young Republicans after the skirmish, Cenarrusa described them as having "a lot of spunk." He added, "I

only hope that the remarks they were credited with originated with them and not the faculty at ISU."

In commenting on the ISU budget, the speaker said he was dissatisfied with the primary budget for the institution that has been prepared by State Budget Director James Defenbach. Cenarrusa said that he planned to talk to Samuelson and Defen-

bach to discuss, "the possibility and feasibility of raising these figures."

Support for a non-political approach to state appropriations was voiced loudly in both chambers of the legislature.

Many representatives said they were concerned about the speaker's statements. Senator John V. Evans, D-Malad, said,

"I want to inform the people of eastern Idaho that this legislature will not appropriate its education dollars on purely partisan political basis, but will consider the budgetary needs of the state's institutions and will distribute the available general fund appropriations equitably." He went on to say he believed the speaker should retract his remarks.



## The Idaho Argonaut

The University of Idaho - MOSCOW, IDAHO

VOLUME 71, NO. 32

Tuesday, February 14, 1967

### Andre Phillip Scheduled For Wednesday Address



The Honorable Andre Phillip who was originally scheduled to speak today will address the student body on Wednesday morning at 10 a.m.

Phillip, the former Minister of Finance and leading international trade expert is one of the first European leaders to press for the unification of Europe.

Dr. Phillip, who has served France and Europe in many capacities, was first elected to the French Chamber of Deputies in 1936. During the Occupation, he served in the French underground until he was summoned by Charles de Gaulle to become Minister of the Free French Government in Exile.

This was a post that he continued to hold when the Government moved to Algiers.

Dr. Phillip returned to Paris as a Member of the Consultative Assembly at the time of the French Liberation, subsequently rising to the Office of Finance Minister.

His other posts have included

## Louise Shadduck To Be Banquet Speaker AWS Panel Discussion Is Planned For Women's Week

"Values—Chained or Changed" will be the topic of discussion today when women students gather this afternoon for an AWS panel discussion, one of several programs scheduled for Women's Days this week.

### AWS Election Set Wednesday

Election of officers for Associated Women Students will be held Wednesday. Polls will be open from 9:30 a.m. to 5 p.m. at the Administration Building. All women students are eligible to vote. Student body cards will be punched.

For information of the candidates, see page 5.

Other features of Women's Days include a banquet tomorrow night at the SUB and a fashion show which was held last night. Correlated with Women's Days is election of 1967-'68 AWS officers, one of the largest women's organizations on campus.

To start Women's Days, the ten best dressed co-eds on campus were featured in a fashion show last night at the SUB. These finalists were chosen from a field of 40 who were selected by their individual living groups.

Moderator for the show was Mrs. Robert McGregor, Lewiston. Mike Siebert, A Phi, introduced her, and Miss Felton told about future activities in this year's Women's Days.

Among models were Lin Severson, DG; Ann Moree Jones, Kappa; Joanne Martin, Gamma Phi; Joanne Bradley, Alpha Chi; Ann Hildebrand, Ethel Steel; Jane Langley, Pi Phi; Kathy Gies, Kappa; Elaine Wozniak, Alpha Phi; Ann Rutledge, Tri Delta; and Ellen Ostheller, Pi Phi.

The "Glamour" winner will be announced tomorrow night at the Women's Days banquet, which will conclude this year's event.

Main event of the banquet will be guest speaker Louise Shadduck, executive secretary of the Department of Commerce and Development. "The Role of the Woman Plays in the World of Today" will be the topic for Miss Shadduck's speech.

At the banquet, new AWS officers will be announced. An award will also be given to the living group who most improved scholastically from first semester to second semester last year.

"I hope that many interested girls will turn out for the final balloting tomorrow," stated Miss Felton. "It is important that we get lots of girls out to vote."

This year's AWS officers besides Miss Felton included Brooke Clifford, Gamma Phi, vice-president; Joan Eismann, DG, secretary; and Donna Morris, Carter, treasurer.

### Scholarships Offered To All Women Students

Scholarships of \$2,050 are being offered to enrolled women students at colleges and universities around the nation.

The women of the University of Idaho are eligible for these scholarships.

The scholarships are being offered during the months of February and March.

The sponsors of these scholarships are Reed and Barton silversmiths, who are conducting a "Silver Opinion Competition."

The First Grand Award is a \$500 cash scholarship; Second Grand Award is a \$300 scholarship; Third Grand Award is a \$250 scholarship; Fourth, Fifth and Sixth Awards are \$200 scholarships; Seventh, Eighth, Ninth and Tenth are \$100 scholarships.

In addition, there will be 100 other awards consisting of sterling silver, fine china and crystal with retail value of approximately \$50.00.

For more information and entry blanks, contact Polly Thompson, Theta.

### 'Student Rights' Topic at Meeting

The Committee for Student Rights will meet at 7 p.m. Thursday at the Burning Stake. The organization is a newly formed group concerned with obtaining more freedom for the University of Idaho student, reports Mike McCoy, SAE. Faculty members and students will discuss upcoming AWS poll on women's hours with general discussion following. All interested students and faculty are invited to attend.

### 'The Fantastics' Tryouts Wednesday

Tryouts for the off-Broadway musical "The Fantastics," will be conducted at 6:30 p.m. Wednesday at the Music Building Recital Hall. Tryouts are for men only. Those trying out are asked to prepare a vocal selection for the auditions.



SHOWBOAT—A small crowd watched the controversial "Up With People" program in Memorial Gymnasium Friday. The side balconies were filled, but the floor was less than half full. The 150 persons were housed in the halls, fraternities, and sororities during their two day stay.

### Small Crowd Views Concert Of 'Up With People' Singers

A rather small crowd watched "Up With People" in Memorial Gymnasium Friday.

Both of the side balconies were filled, but the floor was less than half full.

The crowd gave the group a standing, but reserved ovation. The crowd remained standing through the encore.

Gale Mix, ASUI General Manager, said the ASUI came pretty close to breaking even on the show, although the actual ticket sales will not be known for a few days.

Both ordinary people and applications are being received from students across the country to join the program.

The appearance of former State Senator Cecil Andrus at the Wednesday night meeting of the Young Democrats is expected to attract a large crowd, predicted Roy Haney, off campus, YD president.

Future plans for the YD's include sponsoring a banquet in conjunction with the Latah County Central Committee next month to honor Sen. Frank Church.

### Andrus Will Appear At Young Democrats Meet

The meeting will be held at 7:00 in the SUB Borah Theater and is open to the public.

Andrus will present a statement to the audience and then answer questions from the floor.

The three-term senator and 1966 gubernatorial candidate will discuss Idaho political issues, placing an emphasis on education.

Educational programs that Andrus has previously supported include the inauguration of a teacher scholarship program to help teachers continue their education and improve the quality of Idaho teaching.

He also has supported expanded programs of state-supported vocational education at our Junior Colleges to provide job training for young people out of school and out of work.

Additional support for Idaho's colleges and universities has also been a part of his platform.

"He would certainly ask for more money than Samuelson for all education," Haney said.

Andrus, formerly of Orofino, moved to Lewiston early in December. He sold his co-op laundry business and is currently concerned with the insurance business which he also ran while living in Orofino.

The former senator appeared on the university campus several times last spring and fall for speaking engagements, including addresses to the YD's and

### On Calendar

- TUESDAY
- Frosh Rally Committee — 7:30 p.m.
- Frosh Tug-o-War — 7 p.m.
- Coffee Hours and Forums — 7 p.m.
- Physics — 12 p.m.
- CUP Executive Board — 6:30 p.m.
- Legs Contest Committee — 7:30 p.m.
- Frosh King & Queen Committee — 7 p.m.
- Associated Foresters — 7 p.m.
- IEEE — 7 p.m.
- Women's Days Panel — 4 p.m.
- IK — 8 p.m.
- Frosh Dance Chairmen — 7 p.m.
- Frosh Pie Eating — 7 p.m.
- Sigma Delta Chi — 6:30 p.m.
- WEDNESDAY
- MUN — 7 p.m.
- Art Exhibits Committee — 7 p.m.
- Recreation — 12 noon
- Alpha Phi Omega — 3 p.m.
- Student NEA — 7 p.m.
- Spurs — 5 p.m.
- Young Democrats — 7 p.m.
- Vandalettes — 4 p.m.
- Ag. Econ Club — 7 p.m.
- CUP — 7 p.m.
- THURSDAY
- PanHell — 6:45 p.m.
- Mortar Board — 5 p.m.
- Alpha Phi Omega — 7 p.m.
- Frosh Week Committee Chairman — 7:30 p.m.
- Mortar Board-Blue Key — 6:30 p.m.
- Alpha Zeta — 7 p.m.

## Opera Workshop Presents Scenes Tonight At Music Bld. Recital Hall



FALSTAFF—The University Opera workshop will present parts from several famous operas tonight at 8 p.m. in the Recital Hall of the Music Building. Playing in a scene from Verdi's "Falstaff" are left to right Roberta Timm, Tri Delt, playing Dame Quickly, Twyla Brunson, Hays, playing Meg, Tecla Guerra, Ethel Steel, playing Ann, and Janice Johnson, Gamma Phi, playing Alice. For more opera workshop see page 7.

Tonight at the Recital Hall in the Music Building scenes from seven operas will be presented by the University Opera Workshop.

"The show tonight should be of interest to all students," commented Mrs. Dorothy Barnes, music director, "since it selects excerpts from several famous operas."

The performances, admission free, will be sung in both English and Italian. According to Mrs. Barnes, the works vary in style from Gluck to Donizetti, Mozart and Verdi.

Musicians performing at 8 p.m. tonight will be Janice Johnson, Gamma Phi, and Dale Uhlman, Snow, who will sing a number from "Die Auberflote" by Mozart. Diana Gray is the director. Another scene will be from "La Nozze di Figaro," also by Mozart, and will feature Diana Gray, A Phi, Larry Gee, off-campus, Jerry Benton, Borah, and Twyla Brunson, Hays.

Roberta Timm, Tri Delt, and Twyla Brunson will sing a selection from "Orfeo Euridice" by Gluck. A number from "The Pirates of Penzance" by Gilbert and Sullivan will be sung by Doris Queener, off-campus, and Dale Uhlman.

Diana Gray and Larry Gee will Pasquale" by Donizetti. From "Le Nozze di Figaro" by Mozart, excerpts will be sung by Karen Bauer, off-campus, and Tecla Guerra, Ethel Steel, with Janice Johnson directing.

Another selection from "Le Nozze di Figaro" by Mozart will feature Twyla Brunson and Janice Johnson. "La Traviata" will feature Karen Bauer, Dorothy Neuer, Carter, and David Knutson.

A ninth excerpt will be from "Falstaff" by Verdi. Performing will be Janice Johnson, Roberta Timm, Twyla Brunson, and Tecla Guerra. Director is David Knutson.

Janice Johnson, Gamma Phi, was been the director for all costume making, a first this year. The advanced class members have had the opportunity to direct individual scenes in preparation for direction of high school operettas.

Among student directors are David Knutson, Diana Gray, Roberta Timm, and Janice Johnson. Student accompanists are Karen Schouler, off-campus, and Patsy McDowell, off-campus.

The scenes are under the direction of Dorothy Barnes, music instructor.



### Washington State Union Building Will Have a Change of Face

A new addition and the renovation of the existing CUB at Washington State University will cost the institution nearly \$3,730,000. The Old Commons at Washington State will be packed with students again later this year.

Most of the Old Commons will be converted into a temporary union building. A large addition to the Wilson Compton Union Building will be constructed this year and next, and the existing CUB will be completely renovated from top to bottom.

The building will be closed from next summer until the summer of 1968. One of the first sections of the building to be closed down will be the kitchen. It will be completely redone and greatly enlarged.

WSU officials say the CUB will be emptied of all its present occupants by July 1. The move will come this spring, but the building will continue to operate until after this year's commencement.

Architects say it would be impossible to complete construction of the union in time for it to be opened for student use in September 1968 unless the building is emptied completely of all occupants immediately.

Dr. Matthew B. Carey, director of the CUB and student activities, said the fountain area in the temporary union will be smaller than that in the CUB, but would still seat some 325 students.

Major student dances that have been held in the Compton Union Building will be scheduled next year in Smith Gymnasium, officials said.

Dr. Beasley, acting president at WSU said the institution would do everything possible to accommodate the needs of the students. He said he recognized that stu-

dent and faculty groups would be inconvenienced by the remodeling, but said it was necessary that this be done now to prepare for the larger enrollments of the future.

### Draft System Faces Changes

(ACP) — The Selective Service System may face great changes when it expires this June, speculates the Kansas State University Collegian.

National legislators are expected to revolutionize the Selective Service Law, first enacted in 1951, during the 90th Congressional session which convened Jan. 10. Their problem is to find an alternative to the present draft system.

Of about 18 million men of draft age, all but 5 per cent are exempt because of previous service, health, schooling, occupation, marriage, or belief. Also exempt are persons working in the nation's 4,061 draft boards and in many other government positions.

Because of a sizeable drain on the nation's military manpower with the increasing combat demands of the Vietnam war, some untapped sources will have to be found to supply the necessary men. This is where the question of student deferments comes in.

The current Selective Service policy of granting deferments to college students has become a sensitive political question. The main argument against such deferments is that only the rich can afford to go to school, leaving the poor to fill military quotas.

College students have no monopoly on mass deferment, however. Deferred students (2-S category number 1,523,839 compared to 2,431,191 classified as substandard (1-Y) and 2,498,023 total rejects (4-F).

Graduate study also defers many eligible males. With the immediate reclassification of college graduates to 1-A, there is a growing trend to begin graduate study, thus turning deferments into exemptions, since many students are too old or married with children by the time they complete graduate work.

The new system, the group said, would eliminate what they considered the arbitrary and capricious rules for student deferments — rules which vary from local board to local board.



NEW MILITARY QUEEN—President Ernest Hartung plants a kiss on the cheek of Marsha Bohman after she was crowned Military Ball Queen. Looking on are finalists Colleen O'Keefe, A Phi center, and Ann Shelley, Kappa. Not pictured were finalists Marcie McGuire, Theta, and Pam Jones, Gamma Phi.

### Marsha Bohman Reigns As Military Ball Queen

Marsha Bohman was chosen Military Ball Queen by cadets from Army, Navy, and Air Force. She was crowned at the dance Saturday night by University President Ernest Hartung.

Miss Bohman was one of five finalists that included Marcie McGuire, Theta; Colleen O'Keefe, Alpha Phi; Ann Shelley, Kappa and Pam Jones, Gamma Phi.

Miss Bohman was walked under an arch of crossed swords to the stage where she was crowned. She was escorted by Army Cadet Wayne McProud, Farmhouse.

The annual ball was held in the SUB Ballroom, with music provided by the "Gentlemen of Note." The band, consisting of fourteen pieces and a singer, is from Lewiston. The theme for the dance was "Born Free," with decorations in gold and white with navy blue accents.

The guests at the dance, estimated at 1000 by Army Major Norman A. Mathias, included cadets from the Army, Navy, and Air Force, their dates and their invited guests. In past years, the dance has been open to anyone.

The receiving line was made up of the Cadet Commanders from the three branches and their dates. The cadets were Navy Midshipman Donald Fry, Delta Sig, Air Force Commander, Jerry F. Decker, Beta, and Army Commander Patrick Costales, Chrisman, substituting for Rod Bohman, Fiji, who was on a basketball trip.

The Master of Ceremonies was Ted Bell, Arnold Air Society Commander. Entertainment after the crowning was provided by the Briars, a campus singing group.

Refreshments were provided by the SUB, and coats and hats were checked by members of Alpha Phi Omega, an honorary.

Among the invited guests attending the Ball were President and Mrs. Hartung, Vice-President and Mrs. Walter Steffans, Vice-President and Mrs. Kenneth Dick. Several deans and their wives were present, also several faculty members, and Army, Navy and Air Force personnel.

Chaperones for the dance included Col. and Mrs. Thompson, Professor of Aerospace Studies;

### 'The Comedy Of Errors' Cast, Crew Aim For Mar. 9

Cast and production staff for Shakespeare's "The Comedy of Errors," to be produced by the ASUI March 9-11 at the University Auditorium have been announced.

The cast includes Solinus, Duke of Ephesus, James Freeman, Sigma Chi; Egeon, a merchant of Syracuse, Michael Hughes, Chrisman; a jailor, Vincent Coleman, off campus, and a merchant friend to Antipholus of Syracuse, James Hutcherson, off campus.

Other cast members are Angelo, a goldsmith, Charles Wright, Pi Kap; Balthasar, a merchant, John Naples, off campus, and a merchant to whom Angelo is in debt, Phillip Schmidt, Chrisman.

The comical situations and "errors" in the play result from the confusing circumstances which surround two sets of twins. The first pair of twins is composed of Antipholus of Syracuse, John Breden, off campus and Antipholus of Ephesus, Gerald Henry, off campus. In addition, the bondmen for these two men are twins. The two bondmen are Dromio of Syracuse portrayed by Steve Scott, Figli, and Dromio of Ephesus played by Brian Lobdell, Sweet.

The remainder of the cast is composed of Adriana, wife of Antipholus of Ephesus, Michael Sheehy, Tri Delt; Luciana, sister of Adriana, Leslie Leek, Tri Delt; the Courtesan, Joan Throop, Pi Phi; Pinch, Don Volk, off campus; Luce or Nell, Julie Martineau, off campus; Emilia, an abbess, Bonnie Brown, off campus; another jailor, Dale Bachman, Chrisman; Mike McKown plays the headman, Chris-

man; messenger, Rand Lewis, off campus, and officers: Ron Reynolds, Snow; Mike Graves, Phi Tau; Jim Beck, Lindley; Jim Waters, TKE.

Julie Martineau and Don Volk are assistants to the director. The stage manager is Greg Melton, Shoup. The head of costumes is Andrea Hill, Tri Delt. She is assisted by Veronica Stefens, Pine Hall; Lynda Tucker, Alpha Gam, and Susan Yurk, Pine. Donna Davis, Carter, is head of the lighting crew with Elizabeth Schimmel, off campus, as an assistant. Bonnie Brown is in

charge of properties. The sound crew is headed by Anne Shaltry, Campbell, James Freeman is in charge of make-up. He is assisted by Steve Scott, Don Volk, Leslie Leek, and Michael Sheehy. Vickie Haight, Pi Phi, and Sue Atherton, Hays, compose the painting crew. Jane Slaughter, Tri Delt, is in charge of publicity. Frank Yamamoto, off campus, is the head of the building and staging crew. His crew members are Wanda Gardner, Pine; Karen Rember, Alpha Chi; Dale Bachman, Chrisman and Michael Hughes, Chrisman.

### Michigan Professors Urge Grade Revision

(ACP)—While college students across the country are advocating abolition of the letter-grade system in favor of a pass-fail or satisfactory-unsatisfactory system, 15 members of the Michigan State history faculty are urging revision of the current system to make it fairer and more meaningful, reports the State News.

The 15 men, ranging in rank from instructor to full professor, are co-signers of a letter to the State News protesting the straight letter-grade system used at Michigan State. They propose the addition of plus and minus grades on official transcripts.

"There is no reason why this cannot be done here," the letter stated, "yet the appropriate agencies have resisted, not to say ignored, any such suggestions from segments of the faculty." The letter urged students "to

take a good, hard look at grading, and express its wishes, individually and collectively."

Prof. Norman Rich, one of the signers, said "there is no ideal way of having a grading system anyway" but that the plus-minus system "gives a little more chance to be fair."

The author of the letter, Asst. Prof. Paul J. Hauben, said, however, that "unless there's a lot of student reaction, nothing is going to happen. The faculty does not get a lot of attention in this area."

A subcommittee of the Educational Policy Committee is discussing the grading system. In 1963, when the subcommittee also studied the system, it made four recommendations, among them the addition of a C-plus grade "to give the middle student a break."

### Freshman Prose Deadline Friday

Material for the second edition of "The Freshman Prose Bowl" must be submitted for publication before 5 p.m., Friday to UCC 217. The material must be typed, double spaced and clean.

The literary magazine consists of essays, short stories, themes and poems written entirely by the class of '70.

## CAREER OPPORTUNITIES

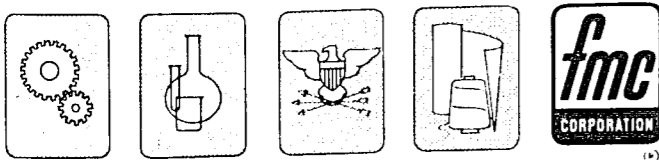
MACHINERY, CHEMICALS, DEFENSE, FIBERS AND FILMS, RESEARCH AND DEVELOPMENT

Senior and graduate students in Engineering, Science and Business will want to talk over career opportunities at FMC Corporation. Appointments should be made today with the college placement office for individual interviews with company representatives who will be on campus.

February 15, 1967

FMC Corporation's dynamic growth and diversification offer challenging and rewarding careers in a wide range of disciplines. The important first step is to make arrangements now for an interview with a representative of FMC.

Putting Ideas to Work in Machinery, Chemicals, Defense, Fibers and Films



An Equal Opportunity Employer

## Job Interviews

February 17—THE BON MARCHE. Placement Office. UNITED STATE PLYWOOD CORPORATION. Placement Office.

U. S. NAVAL ORDNANCE TEST STATION (China Lake). Engineering Bldg. ATLANTIC RICHFIELD CO. Engineering Bldg.

SHORELINE SCHOOL DISTRICT (Seattle). Placement Office. HUMBLE OIL AND REFINING CO. Placement Office.

February 20—ALL-STATE INSURANCE COMPANY (Salem, Oregon). Placement Office. DOUGLAS UNITED NUCLEAR, Engineering Bldg.

GENERAL DYNAMICS (Convair Division). Engineering Bldg. TEXAS INSTRUMENTS. Engineering Bldg.

U. S. NATIONAL BANK OF OREGON. Placement Office. KENNEWICK, WASHINGTON, PUBLIC SCHOOLS. Placement Office.

OGDEN AIR MATERIEL AREA. Engineering Building. February 21—CROWN-ZELLERBACH. Engineering Bldg.

HEWLETT PACKARD COMPANY, Engineering bldg. PACIFIC MISSILE RANGE (Point Mugu). Engineering Bldg.

PACIFIC NORTHWEST BELL TELEPHONE SYSTEM. Placement Office. FIFE, WASH., PUBLIC SCHOOLS. Placement Office.

When we say we want people for the outer limits, this isn't what we have in mind.



Forget science fiction. We're talking about the "outer limits" of technology. And these days it can be even more exciting than science fiction.

Right now IBM needs qualified men and women to help reach these outer limits. The kind of people who have made IBM the leader in today's fastest-growing major industry: information handling and control. And the kind of people who can grow with us as far as their

talents and abilities allow.

The result? Greater personal responsibility and recognition; the dual satisfaction of personal achievement and continuing personal rewards. A pretty satisfying result.

Job opportunities at IBM are in six major areas: Computer Applications, Programming, Finance and Administration, Research and Development, Manufacturing and Marketing.

Whatever your immediate commitments, whatever your area of study, sign up now for an on-campus interview with IBM, March 7.

If, for some reason, you aren't able to arrange an interview, drop us a line. Write to: Manager of College Recruiting, IBM Corporation, 3424 Wilshire Boulevard, Los Angeles, California. IBM is an Equal Opportunity Employer.

## RATHAUS PIZZA SHOPPE

### HAPPY HOUR

EVERY TUESDAY 6:30 to 7:30

FREE PRETZELS

GOLDEN NECTAR—15c a glass  
MUSIC from 7-1 p.m.

# U-I Women's Day Begins With Monday Style Show



Ellen Ostheller

Women's Days activities began last evening with a style show by the girls selected as Idaho's 10 best coeds. Each girl modeled three outfits. The contest is for Glamour magazine.

Selection was made last week by interview. Idaho's Glamour Magazine candidate will be announced tomorrow night at the banquet which will culminate Women's Days activities.

The 10 finalists were chosen from approximately 40 contestants, who had been nominated by the campus women's living groups. Judges are Elsie Nielsen, professor of home economics; Ann Marie Rytting, social and conference coordinator for the SUB; and Sandy Wright, AWS president at Washington State University.

Ellen Ostheller, Pi Phi is a senior majoring in journalism. Miss Ostheller was editor of the Argonaut first semester this year and is associate editor for the spring term. She was named "Miss Wool" during her sophomore year and she is a member of Theta Sigma Phi, journalism honorary. Her hobbies include skiing and photography. Future plans include work in the news media. Ellen is 5' 7" and has brown hair.

Lin Severson, DG, is a sophomore. Miss Severson is 5' 4" and has light brown hair. She has been active in drama productions and is a member of Helldivers. She was a Navy color girl candidate this fall. Her hobbies include riding, skiing, sewing and designing. She is also interested in music, and plays the organ. Future plans include working and travel.

Jane Langley, Pi Phi is 5' 9" and has blond hair. She is a member of Angel Flight and Vandalettes and served on Frosh Week and Holly Week committees. Her major is home economics. Her interests are sewing and skiing—both water and snow. Future plans include work in the field of clothes design or merchandising.

Kathy Giesa, Kappa, is a senior majoring in English with French and Spanish minors. She is 5' 5" and has brown hair. She is chairman of the SUB Art Exhibits, secretary-treasurer of Little Sigmas, and cultural chairman of her sorority. She was an Army ROTC sponsor and a cheerleader.

Her hobbies include almost any sport and she enjoys sewing. She prefers good books more than anything and likes to discover new art exhibits and attend concerts. Future plans include a business career or more academics.

Ann Moree Jones, Kappa is 5' 6" tall and has blond hair. She is a sophomore majoring in special education with a Spanish minor. She was chosen as SAE Violet Queen last year and was a finalist for Frosh Queen and Holly Queen. She is a member of the Educational Improvement Committee, Little Sisters of Minerva and Angel Flight.

Hobbies are snow skiing, swimming, golf, tennis and the piano. Future plans are to teach mentally retarded children.

Ann Hildebrand, Ethel Steel, is a sophomore majoring in home economics with a journalism minor. She is 5' 4" tall and has blond hair. She is presently a member of the University 4-H club, the home economics club and a representative for Campus Union Party. She is also a member of the Religion In Life Committee and is chairman of emphasis week. Future plans include work in the journalism field and then to teach.

Elaine Wozniak, Alphi Phi is a junior majoring in physical education with a biological science minor. She is 5' 4" and has dark brown hair. Her activities include Womens Recreation Association, Physical Education Majors club, and a representative to the Newman Club. She is rush chairman for Alpha Phi. Hobbies are snow skiing, horseback riding, instructing swimming, bridge and art. During the summers she works as a lifeguard and as a day camp counselor. Future plans include traveling after graduation.



Connie Bradley and Joanne Martin

Joanne Martin, Gamma Phi, 5' 6" and has dark brown hair. She is a junior majoring in home economics with a general science minor. Her activities include house activities chairman; member of the Hospitality Committee; Election Board; secretary of Spurs during her sophomore year, and Panhellenic Secretary-Treasurer last year. She was also on the Holly Week committee last year. Her hobbies include swimming, skiing, tennis, sewing, cooking, books, and decorating.

Future plans include possible work in Hawaii or work as a demonstrator for a large company.

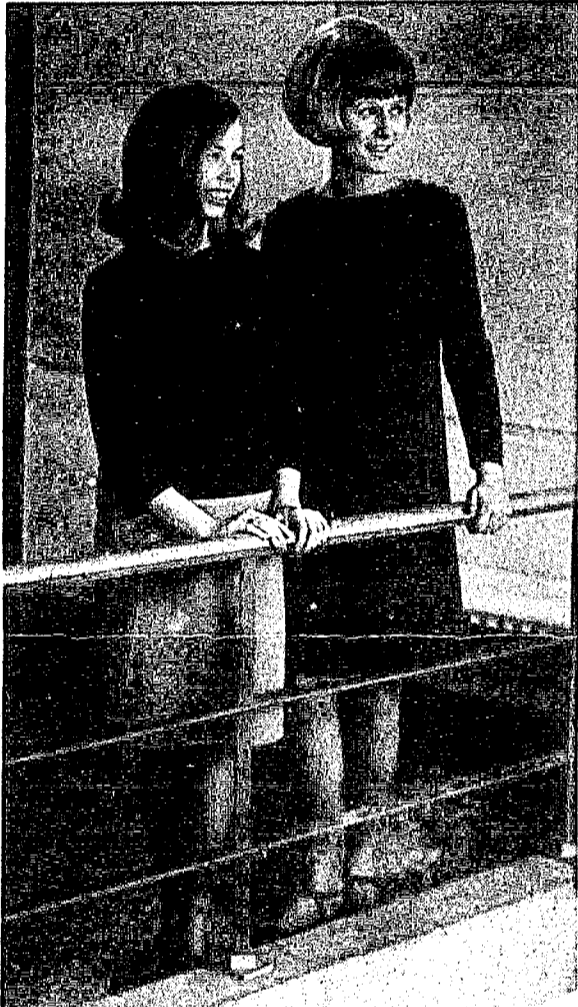
Ann Rutledge, Tri Delta is 5' 5" and has blond hair. A junior, her major is psychology and history. She was chosen as SAE Violet Queen her sophomore year. She is presently president of Tri Delta, and a member of Little Sisters of Minerva. Her hobbies include horseback riding, snow skiing and swimming.

Future plans are to become a guidance counselor in the secondary school system.

Connie S. Bradley, Alpha Chi, is a sophomore majoring in guidance and counseling with a minor in psychology. She is a transfer from Boise College. She is a junior panhellenic representative and a member of the People to People Club. Hobbies include sewing reading, and summer recreation.

After graduation her future plans include work as an airline hostess for a year or teaching. She hopes to then do graduate work in guidance and to attain her masters in this field.

The ten Finalists each modeled three different outfits last night—a campus outfit, a suitable off-campus outfit and an evening gown. The girls wore only their own clothing. The winner will send in a personal essay about her personal wardrobe and three pictures of herself in each type of outfit to Glamour. She will be a candidate in the magazine's contest for the ten best-dressed college women in the United States. The winner will get an expense paid trip to New York to the "Glamour" office and other prizes.



Lin Severson and Jane Langley



Ann Rutledge



Anne Moree Jones and Kathy Giesa



Ann Hildebrand



Elaine Wozniak

# Officers, Amendments Get Vote in Tomorrow's AWS Election

# Theta's, Graham Hall Elect Officers In Recent Voting

By Julie Anderson  
Arg News Editor

Idaho women students will select new officers for the Associated Women Students, and give a yes or no vote to two amendments to the AWS constitution during general election tomorrow on campus. The polls will be open from 8:30 a.m. to 5 p.m. at the SUB, the Ag. Science building and the Administration Building. All women students on the University campus are eligible to vote upon presentation of their student body cards to election officials.

Last week's primary balloting named seven candidates to the final ballot.



Sue Cairns  
... For vice president

Sue Cairns, Theta, and Barbara Howard, Kappa, are candidates for AWS vice president.

Miss Cairns has been active on the AWS Cultural Committee as chairman; she is a member of SPURS; was Freshman class secretary-treasurer, and is first vice president of her living group.

Miss Howard's activities include Orchestras, president; IK Duchess; Greek Week committee chairman; Coffee Hours and For-

ums Committee, and living group rush chairman. She is also a junior.

Candidates for AWS secretary are Karen Arndt, Alpha Chi, and Candy Watson, Pi Phi.

Miss Arndt, has served as secretary of Cross-Campus Alliance Party; and is a member of SPURS. She is co-chairman of the State Hospital North Committee and was a delegate to the AWS state convention.



Candy Watson  
... For Secretary

Miss Miller has been pledge class treasurer; house assistant treasurer and SPUR chairman of ushers.

Voters will also be asked to approve two amendments to the constitution.

freshman, sophomore or junior class."

Amendment No. 2, if approved, will alter the process of amending the AWS constitution.

"That Article XII (Amendments) which now reads:

Section 1: A majority of those present at a properly advertised meeting of the Associated Women Students of the University



Allison Miller  
... For treasurer

of Idaho shall be required for an amendment to this constitution.

Section 2: Amendments must be presented in writing at a meeting of the Legislature and voted upon at the next meeting.

To be amended as follows:

Section 1: Amendments must be presented in writing at a meeting of the Legislature and voted upon at the next meeting.

Section 2: Amendments approved by Legislature will be placed to a vote at the yearly scheduled AWS officer elections.

Section 3: Special elections dealing with amendments may be called when deemed necessary by the AWS president.

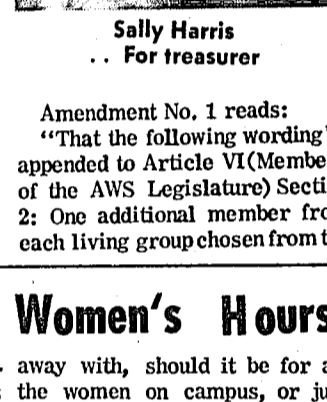


Karen Arndt  
... For secretary

Miss Watson, also a sophomore, is information officer of Angel Flight and was a Frosh Week Committee chairman. She has served on Junior Panhellenic.

Those running for AWS treasurer are Sally Harris, Campbell and Allison Miller, Alpha Phi.

A sophomore, Miss Harris, has served as president of Alpha Lambda Delta and as a member of AWS reference board. She is a member of SPURS and was Girls League treasurer in high school.



Sally Harris  
... For treasurer

Amendment No. 1 reads: "That the following wording be appended to Article VI (Members of the AWS Legislature) Section 2: One additional member from each living group chosen from the



Joan Eismann  
... For president

Running unopposed for AWS president is Joan Eismann, DG. Miss Eismann, a junior, was president of Alpha Lambda Delta, freshmen women's honorary; active in SPURS, and has served as AWS secretary. She has been rush chairman for her living group and is now second vice president.

## Sarah Hall Chosen LDS Sweetheart

Sarah Hall, off-campus, was announced as the first LDS Sweetheart Queen at the LDS Sweetheart's Ball last Friday.

The other three contestants, Jan Arrington, DG, Linda Hoopes, DG, and Andrea Hill, Tri Delt, and the Queen-to-be were escorted through the crowd to the stage and each were given a gift-wrapped box of roses. Three of the girls were given white roses while the Queen was given red.

The Student Union Ballroom was decorated for the occasion with a numerous variety of hearts. The decorations consisted of a large red heart in a white background made with paper napkins.

The Sweetheart's tree had white handmade blossoms and heart centers, the tablecloths were covered with hearts, and the doorway laced with strands of tulle paper.



Barb Howard  
... For vice president

## Student News of Record

**POLICE COURT**  
Richard H. Albers, 23, off-campus, red light violation, \$10.  
David M. Hocklander, 19, TKE, red light violation, \$10.  
Parviz Faramarzi, 31, off-campus, stop sign violation, \$10.  
Arthur Blacker, 20, Upham, jay walking on green light, \$5.  
Dennis L. Cain, Phi Gamma Delta, expired operator's license, \$5.  
Marcia M. Anderson, 27, off-campus, stop sign violation, \$15.

University of Idaho Dames will meet Wednesday at 8 p.m. in the Faculty Club. A representative from the Real Estate Association will speak on "How to Buy a Home."

## Debate Continues Women's Hours

Polling co-eds and their parents about women's hours has been the subject of many discussions and a lot of speculation in the past week.

And there's more in the offering. The Committee for Student Rights, a new group on the Idaho campus concerned with student freedom, is holding a discussion Thursday night at 7:00 p.m. at the Burning Stake. Members of the faculty and students will present their opinions on the various women's hours proposals, then the topic will be thrown open for general discussion.

Margie Felton, AWS president said that there are essentially three choices open to the girls and their parents. (1) Leave hours as they are now; (2) extend present hours; or (3) abolish hours completely, and if they are done

away with, should it be for all the women on campus, or just for upperclassmen.

Sometime before the first of March questionnaires will be sent to parents, and the girls will be polled at their living groups. Miss Felton said that the Office of Student Affairs has hired a woman especially to tabulate polling results as they come in. They will probably be published by the middle of March.

Associated Foresters will meet at 7 p.m. today at the SUB to hear Ranger James Valder, Mt. Rainier National Park, speak on "The National Park System." Gem photos of club members will be taken at 7 p.m. and the upcoming AWFC conclave at Corvallis, Ore., will be discussed.

chemical, civil, electrical, electronics, general, mechanical engineers, chemists and metallurgists



## investigate career opportunities at San Francisco Bay Naval Shipyard, the Navy's largest industrial activity.

ENJOY UNMATCHED POTENTIAL FOR PROFESSIONAL AND PERSONAL GROWTH. You'll be challenged by the variety offered in the design, construction, overhaul and conversion of Polaris missile submarines, guided missile frigates, destroyers, aircraft carriers, deep submergence craft, Sea Lab II, etc.

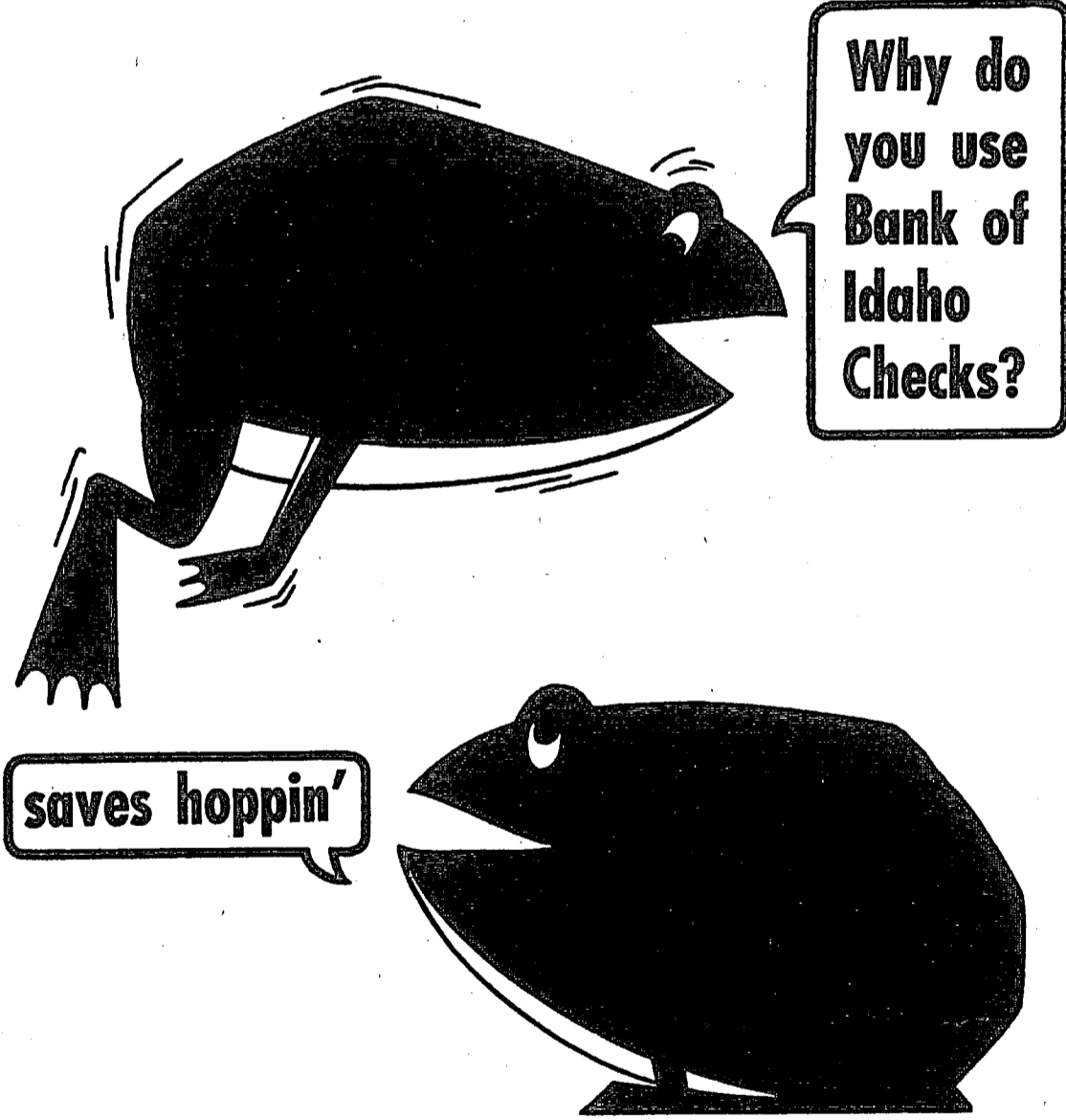
APPLY YOUR TALENTS TO IMPORTANT PROGRAMS: Nuclear power, ship structures, electrical/electronic systems, missile systems, marine/mechanical design, welding, chemistry

(analytical) and metallurgical inspection and test, quality assurance, process methods and standards, tools and plant utilization.

LIVE IN THE FAMED BAY AREA. San Francisco Bay Naval Shipyard has two work sites located 40 miles apart: Hunters Point in San Francisco and Mare Island in Vallejo, California. Each location has ready access to the cultural advantages of San Francisco. All types of recreation from ocean surfing to skiing on the slopes of the Sierras are within easy driving distance.

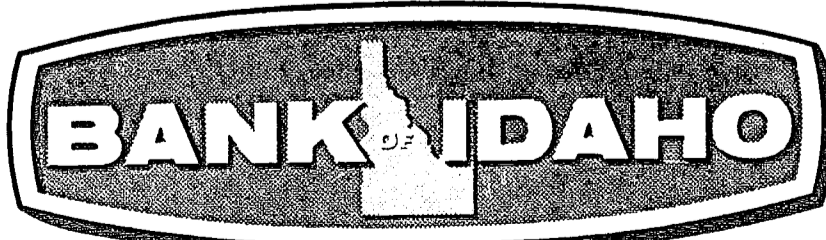
Representative on campus  
THURSDAY, FEBRUARY 23  
for interview, contact your placement office

An Equal Opportunity Employer. U. S. Citizenship Required.



Paying by check has a lot of advantages. A canceled check is a handy record and receipt. It's safer than cash, too! But perhaps most important is the time and energy it can save you. Stop by any Bank of Idaho branch and open your checking account. The service is terrific at

YOUR PROGRESSIVE



SERVING IDAHO WITH 20 OFFICES

AFFILIATED WITH WESTERN BANCORPORATION

MEMBER FEDERAL DEPOSIT INSURANCE CORPORATION • MEMBER FEDERAL RESERVE SYSTEM



### Here's More About Letters To Jason

biologists are having enough trouble with the priority of the chicken or the egg.

Truly wise is he who solved this enigma and now concerns himself with the possibility of two chickens (or eggs) occurring spontaneously instead of the one.

He functions as the epitome of that which is sorely lacking in our society — superior physical fitness in mind, body and spirit.

Sincerely,  
Jan Headrick  
Pi Beta Phi

### Bill Elmers, Jr. Off-campus Gault Resident Lauds Panty Raids

### Column's Defense Praised By Coed

Dear Jason:

Hurray for Dick Sherman and his defense of the athlete! I am only one of many who are sick and tired of hearing about the proverbial "dumb jock." Why not immortalize the "emaciated physics major?" It would be as equally absurd and unwarranted. Of course extremes exist in all areas of aptitude, but why admonish only those who possess athletic prowess.

The men who represent our nation in international competition are an honored lot; why must they suffer humiliation at the college level. Certainly an inconsistency in public attitudes exists.

The relatively low GPA's of some who participate in sports is not without explanation. Extracurricular time ordinarily utilized for studying is, for the athlete consumed by practices, meetings and road trips.

The athlete-P.E. major is even further subjected to criticism. While parts of his curriculum may be less difficult than quantitative analysis or fluid mechanics; physiology, anatomy, kinesiology and other technical courses have yet to be "mickeys" for anyone.

As long as I'm on my soapbox, I'd like to shed light on another area of general student ignorance. Many people complain about how much money is spent on athletic scholarships. This policy is more than a matter of school honor — it's a financial investment. It is pure folly to presume that we would get a large attendance at athletic events without having top men to staff our teams. We must compete at a high monetary level in order to attract from high schools and junior colleges those athletes who will bring in paying audiences.

Why is it important to procure large financial returns in this manner? The gate receipts from sports events go towards support of our physical education programs. At some universities, football alone covers operating costs of the entire department.

Instead of condemning the athlete, why not recognize him as a necessary element in any well-rounded academic community

# A Gallery Of Opera Workshop Scenes



### ICEP Members To Watch Legislature

Seventeen ICEP (Idaho Center for Education in Politics) members will get a first hand view of the Idaho legislature in action Monday and Tuesday when they journey to Boise as guests of the legislature.

The ICEP's will sit in on sessions of the legislature and attend some normally closed committee meetings.

Jim Tegan, Phi Delta, ICEP president, said the purpose of the trip is to learn about party organization.

The group including Dean Boyd A. Martin, ICEP advisor, ICEP officers, Jim Tegan, president, Phi Delta; Lee Davis, vice-president, off-campus; and Hazel Perks, secretary-treasurer, off-campus will leave from the SUB Sunday noon.

thrown out of a window; they have to go inside and tear up the place hunting for things. As long as no one is hurt and all the loot is returned, what is so wrong with letting off steam in an old fashioned party raid?

Or are the "females" on this campus too "mature" to do such a thing as throw a few of their unmentionables out to a bunch of wild boys? A little cooperation from both sides (and the Hill) and this campus might not be so dull after all.

Joe Colwell  
Gault Hall

**THIS WEEK'S SPECIALS**

**FAN BELTS** Reg. 3.45 Our Price 1.99 **88c**

<b>TURTLE WAX</b> Reg. \$2.00 Our Price <b>\$1.29</b>	<b>CHAMOIS</b> From Economy to the very best <b>88c</b> and up	<b>Standard Auto BATTERIES</b> 6 & 12 Volt 20 to 40 mo. Guarantees <b>\$7.99</b> and up
---	--	--

Open Sat. 6:00!

**MIKE'S AUTO SUPPLY**

DISCOUNT PRICES

"Between-the-Theatres" MOSCOW

**DR. J. HUGH BURGESS**

Optometrist

Complete Visual and Lab Services  
CONTACT LENS SPECIALIST  
Special Attention to Reading Problems  
CONSULTATION FREE

Office hours 9-12—1:30-5:00 Monday thru Thursday  
O'Connor Bldg. Over Larry's Shoes TU 2-1344

## PRESENTING CONVAIR

...A Great Name in Aerospace

The Convair Division of General Dynamics Corporation is one of the largest and most sophisticated aerospace and research firms in the country. It was formed in 1965 through the merger of two divisions of General Dynamics: the old Convair Division and the Astronautics Division, both in San Diego.

The heritage of Convair dates back to aircraft production prior to and during World War II. In recent years the former Convair Division produced the Air Force F-102 and F-106 jet interceptors, the 880 and 990 jet transports, and the Little Joe solid rocket booster. The Astronautics Division was the home of the Atlas, the first free-world ICBM, and the subsequent development of the Atlas as one of the nation's major space launch vehicles; many other aerospace and research programs were undertaken by Astronautics including Centaur—the first U.S. space rocket powered by liquid hydrogen.

**Company Description**

Convair is primarily involved in research, development and production connected with the aerospace industry. Its primary efforts are in complete systems and programs. The spectrum includes space launch vehicles, electronics systems, maneuverable re-entry vehicles, commercial and military aircraft and oceanographic research.

Major programs include the Atlas space launch vehicle; the Atlas/Centaur booster program used to put the Surveyor spacecraft on the moon; the design and installation of complete telemetering stations; conversion programs on Convair military and commercial aircraft; satellite research; manned space systems, and oceanographic telemetering buoys.

**Opportunities**

The variety of Convair products requires engineering graduates at all degree levels with majors in aeronautical, electrical, electronic and mechanical engineering, engineering mechanics and engineering physics.

Engineering or science graduates will be assigned to the following areas: advanced

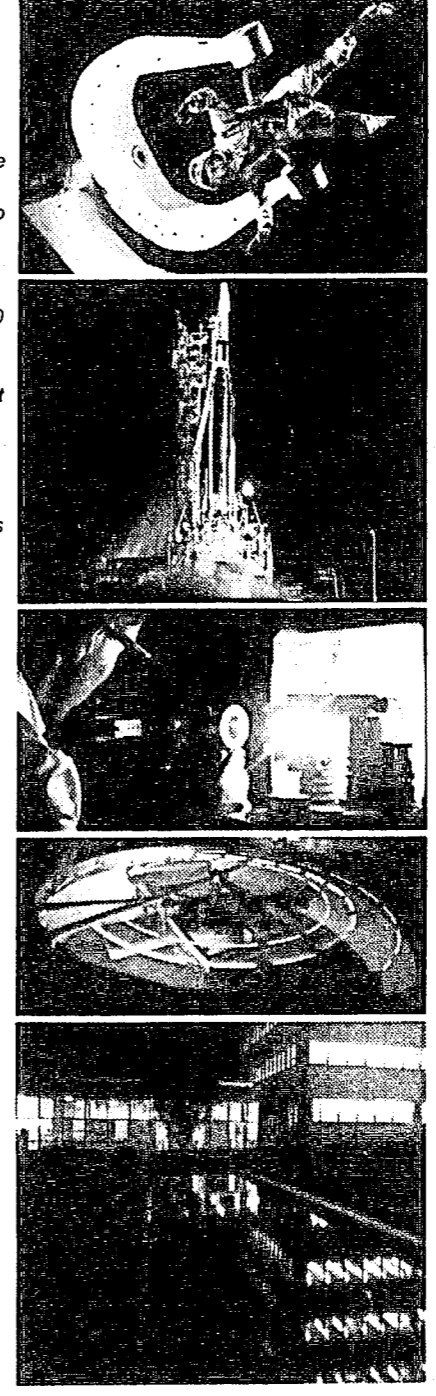
systems, systems analysis, space sciences, life sciences, information sciences, scientific data processing, aeroballistics, dynamics, thermodynamics, guidance, structures, mechanical design, electrical design, reliability, test engineering and materials research.

**Special Features and Attractions**

Convair offers outstanding fringe benefits including an Employee Savings and Stock Investment Plan to which the Company contributes as well as a Retirement Plan and Tuition Assistance Programs. Convair engineers can select from many company-sponsored educational assistance programs and determine for themselves which is best suited to their particular requirements. These programs, held in conjunction with four highly rated local colleges and universities, include a tuition refund plan, an irregular work week to permit college attendance, an advanced-degree work-study program, special courses and seminars, and Doctoral Fellowships, among others.

One of the nice things about working at Convair is living in San Diego... one of the country's truly great resort centers. With only 10 degrees difference between January and July highs, the sunny San Diego climate is pleasant throughout the year.

Two great bays and 70 miles of ocean beaches provide all year aquatic sports and fishing. Exciting Mexico is just a few miles away. Nearby mountains, a world-famous zoo, and a marine park add to the fun... plus 64 golf courses for year 'round play. San Diego is an ideal family city with excellent schools. As the country's 16th largest city, San Diego offers the best in cultural attractions, performing arts, professional sports, and other entertainment.



Our representative will be visiting your campus soon. Contact your College Placement Officer to arrange an interview appointment, or write to Mr. J. J. Tannone, Supervisor, Professional Placement and Personnel, General Dynamics Convair Division, 5606 Kearny Villa Road, San Diego, California 92112.

**GENERAL DYNAMICS**  
Convair Division  
San Diego, California  
An Equal Opportunity Employer

## WE ARE LOOKIN FOR CHEMICAL & MECHANICAL ENGINEERS

to fill challenging career positions in the petroleum industry.

If you are genuinely interested in starting your career with a dynamic, expanding petroleum company, come in and talk to us at Atlantic Richfield.

Our representative will be on campus to interview interested candidates from 9 a.m. to 4 p.m. tomorrow, February 17, in the Placement Office.

**ATLANTIC RICHFIELD COMPANY**  
An equal opportunity employer

McCall 8617

