

ers won their
season with
ver the Pir-
last Monday

am and Mike
the only Van-
ponents. Oth-
atches were,
campus; Tim
towner, DSP,
and Pat Eck,

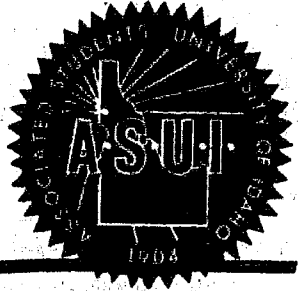
reported that
Vallejo, DC,
ing to action
Sky Confer-
ill be held at
d 25 of Feb.
I see action
aturday this
ay they will
then return
the Gonzaga
morning at

Monday's
es Hinds, I,
forfeit; Dale
d Keith Hun-
d class; Mike
uss Borland,
; Bob Ride-
im Dowty, I,
Rick Mayer,
Backland,
; Mike Day,
ver, W, 167-
k, I, defeated
177 pound
orfeit.

sters

er meeting of
Boosters will
Feb. 18, at
1 at 2:30 p.m.
iston, Presi-
Boosters, will
ing which will
ation of grant-
checks to Ex-
sident of the

ch Steve Mus-
l Ostry, Ath-
introduce two
s. Present to
be Norm The-
and Ed Trox-
t.
ill give a
ketball team



The Idaho Argonaut

The University of Idaho - MOSCOW, IDAHO

VOLUME 71, NO. 34

Tuesday, February 21, 1967

Charity Fund Drive Begins On U-I Campus

By KERRIE QUINN
Argonaut Social Editor
Idaho's 1967 Campus Chest activities to raise money for charity began yesterday and will run through Saturday, with several events planned during the year.

ular dance routine. Boys can enter an alligator contest. Prizes will be awarded.
Cording to Bob Fry, "We are raising money for charity, to help someone less fortunate than ourselves, Campus Chest should be considered not week, but be sure not to lose sight of the real purpose," an opportunity to give."

Campus Chest is sponsored by the sophomore class. "The drive gives U of I students an opportunity to help someone less fortunate than themselves," says Bob Fry, Delta Sig, publicity chairman.

U-I Gets Vacation; WSU Doesn't-Ha!

A nice thing happened 234 years ago. George Washington was born. A nice thing happens tomorrow. U of I students don't have classes! A funny thing happens tomorrow. WSU students have classes!

A sampling at the SUB yesterday brought out a whole spectrum of reactions to the mid-week holiday. Some students seemed numbed with the thought of sleeping late on a week day. Others were indifferent. "A holiday in the middle of the week—big deal. What can you do?" There were plenty of answers to that. Staid and serious looking students hail the day as an opportunity to get caught up. The less sober among us have exuberant plans—enough for a month of fun days. One girl wants to go mountain climbing (!) on Moscow Mountain. Wish her luck. She will have to fight a swarm of skiers to do it. Some of the guys think that WSU should be made to suffer for the lack of proper feeling toward its namesake. "I'm going over to Pullman to boo the poor clods on their way to class," one boy said. And of course there is the almost universal sentiment that it's not a birthday at all without a party. Don't over do it though, it was suggested. As George Washington once said, "Let me now . . . warn you in the most solemn manner against the baneful effects of the spirit of party." Great men like Washington should be born more often.



UGLY MEN—The Campus Chest annual Ugly Man contest is sponsored to raise funds for charity. The man whose face inspires the most contributions Snow, Dick Chilton, Lindley and Blair Clark Upham. In the foreground is the Club, Steve Davis, Beta, Donald Aiman, TKE, Larry Duffin, Sigma Chi, Bar.

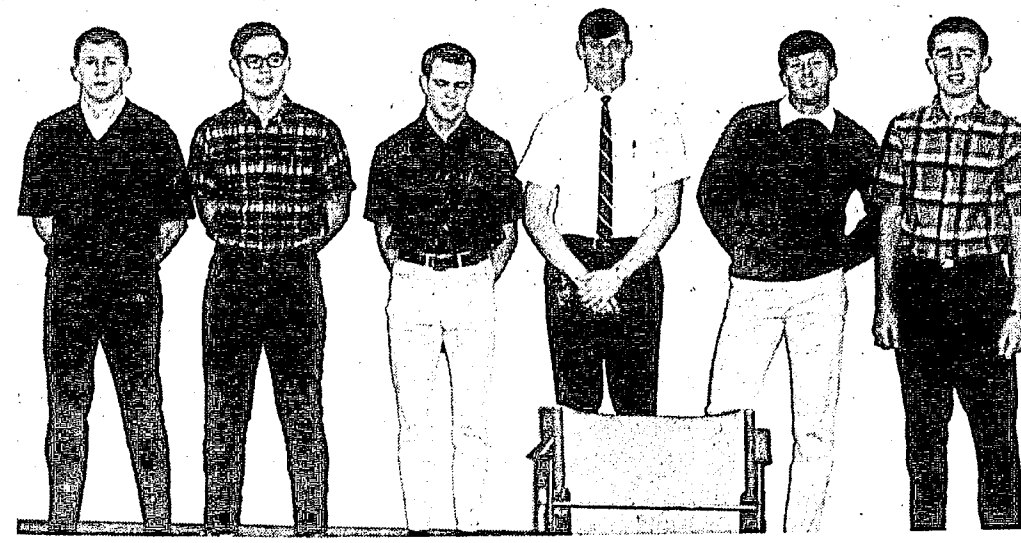
Women's Hours, Topic At Idaho

By JULIE ANDERSON
Argonaut News Editor
An overflow crowd of University students filled the Burning Stake Thursday night to hear faculty and student discussion of women's hours.

The meeting, sponsored by the Student's Rights Committee, was aimed to create campus interest in an AWS poll to be conducted Saturday among Idaho women's living groups. A similar questionnaire has been sent to parents of University women. The combined response will be evaluated by administration and students in an effort to meet the national trend toward more liberal regulations for women students.

A "flyer" issued by the women's living groups last night urged coeds to ask for reconsideration of current regulations. The circular included: "We, as women of the University of Idaho, believe that having women's hours unduly restricts our individual freedoms by violating our statutory rights and by denying us the rights to practice the responsibility we assume as adults."

Enclosed with the AWS questionnaire sent to parents from the office of Dean Marjorie Neely, Dean of Women, was a statement of policy which read: "We believe the time has come to review our relationships with women students in the light of educational philosophy rather than traditional operational procedure, and objectively analyze the reasons we should or should not continue the closing hours policy." It was requested that parents return the questionnaire by March 1. Speakers at the Thursday night meeting included Mike McCoy, SAE, co-chairman of the Student's



"CAN'T TELL, OFFICER, THEY'RE ALL UGLY"—The rest of the Ugly Men contestants are Bob Gardner, Gault, Wayne Crookston, Sigma No, Bill Fawcett, SAE, Brad Rice, Lambda Chi, Pete Hirschberg, Kappa Sig, and Mill Johnston, Farmhouse. Not pictured are Dave Caldwell, Delta, Mike Proteau, Delta Chi, Dennis Morrison, Chrisman, Spike Williamson, Pi Kap, and Stroud Kunkle, Delta Sig. (photo by Seale)

Rush Relates Point of View, Explains Governor's Ideas

ASU President Dick Rush, back from an interview with Governor Don Samuelson at the Boise statehouse Saturday told the Argonaut "The governor has a definite point of view."
"He has decided in his own way how much to spend on education—and no one is going to change it," he said.
Rush described the viewpoint, saying that Samuelson explained he is not against liberal arts education, yet feels there should be stress on the technical aspects.
He also said the governor felt any increases in expenditures for education should be spent on teacher salaries.
Rush said he and Art Crane, ASU vice president spent 45 minutes with Samuelson Saturday for a briefing on budget problems concerning education.
"He has a certain amount designated for the budget this year and is determined not to go over it," Rush said.
The Associated Press said this problem "impressed Rush and Crane."
Rep. Wilbert Cammack, D-Blackfoot, called the governor's line spending estimate "unrealistic" and predicted that the legislature would not be able to follow it.
"Everyone we talked to in the legislature seemed to think more money should be spent than Samuelson proposed. Perhaps up to 20 or 30 per cent increase is possible," he said.
Samuelson's budget now provides for only a 15 per cent increase.
Rush said none of the legislators were thinking in terms of the 35 per cent increase requested by the University, however.
"We were really encouraged about what the legislators said," he said.
The only problem would be the veto power of the governor over any increases the legislature provided over his recommendation. Previously the budget had been submitted as a whole, while now each agency request will be sent in alone, he explained.
"The governor has very conservative ideas," Rush explained.
"He wants to save money, and in this respect will represent the people of Idaho that elected him. And he is doing his best and will talk to anyone—but he won't go over the \$152 million budget he has recommended."
Rush noted that budget cuts oc-

low the governor's instructions, mind and had better not make him mad," Rush said.
The governor's views on education stressed the importance of vocational studies, Rush said. "Mining, engineering, forestry, were areas he said were directly related to the state which should receive emphasis in the educational program."
"He is not against liberal arts, he thinks they are important, but he still feels a need for more money spent on the technical aspects," Rush continued.
"We could see where he (governor Samuelson) has contradicted himself in his beliefs," Rush said.
Stanley Guinn, professor of sociology and anthropology at the university will lead the discussion.

ured not only in education but throughout other departments also.
"You ought to see the other cuts he has made throughout the state. They are not only at the University of Idaho," he pointed out.

Forum Set Sunday

A forum will be held on Sunday night, Feb. 26 at 9 p.m. in the second floor lounge of the Student Union following the showing of "Viet Nam—The War That Creeps and The Quite One."
Another Campus Chest dance will be held in the SUB Ballroom this Friday, Feb. 24 from 9-12 p.m. The dance will feature a Battle of the Bands between William Penn and the Quakers and the Footsteps from Spokane.
An added attraction of the dance will be the Big Dance Contest. Girls will be judged on any reg-

Idaho Bowlers Do Well In ACU Tournament

By JIM HOWERTON
Twelve Idaho students were among the 110 competitors from 16 northwest colleges and universities at the Region 14 Associated College Union Tournament last Thursday, Friday, and Saturday which was held at Washington State.
They competed in bowling, pocket billiards, contract bridge, and table tennis. Chess competition was also held.
Idaho was represented by bowlers Phil Batchelder and Mike McCarthy, both Theta Chi, Larry Helton and Darryl Lee from Chrisman, and Bill Thompson, Sigma Nu.
Dewey Roberts, off-campus, was the Idaho pocket billiards contestant, and Charles R. Croft and Mike DeMarco, both off-campus, represented Idaho in table tennis.
Bill Thurston and Charles Rogers, both Phi Delt's and Steve Davis and Ward Stevens, both Delta Sig, comprised the two Idaho duplicate bridge teams.
The ACU Tournament was open to colleges and universities in Idaho, Montana, Oregon, Washington, Alaska, Alberta and British Columbia. Sixteen schools competed.
The ACU is a worldwide organization with local chapters at 700 American colleges and universities as well as in many foreign countries.
It is a professional organization of student union employees throughout the world and includes many college students.
Competition was started among the schools in 1953, Maun Rudisill, Student Union Programs Director, said that Idaho has been competing for approximately 10 years.

Idaho Ducks NSA Blame Student Gov't Resigns

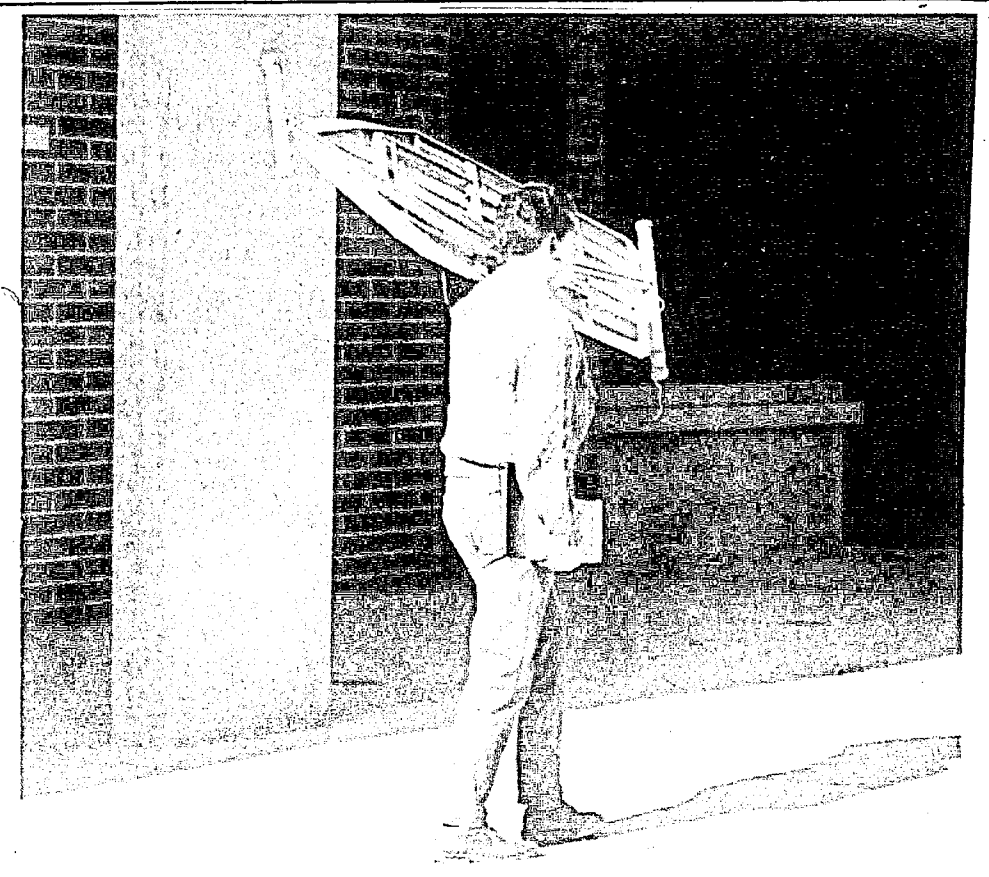
By PAM ZEHNER
Argonaut Staff Writer
Until three years ago, the University of Idaho was a member of the U.S. National Student Organization (NSA), which was secretly financed by the Central Intelligence Agency (CIA).
A national news release last week stated that the CIA had financed NSA's international programs for at least 14 years. The announcement has caused a national controversy and aroused questions of federal control, student spies, and foreign relations.
When Idaho voted to resign its membership in NSA, the students felt that the organization was too political, ASU President Dick Rush said that students who were delegates to the conventions felt that they were elected to represent student groups, not political groups.
Gale Mix, general manager of ASU, gave other reasons for Idaho's resignation from NSA. He said that officers came back from the NSA conventions disgruntled and disappointed. The organization, he said, was dominated by the big ivy league schools. "There was nothing in the organization or conventions that was of help to Idaho, so we voted to drop it," he said.
Mix said that the first squabble Idaho had with the NSA was eight or nine years ago when the organization chartered a boat at a low cost and set up a foreign tour for student members. Idaho

CALENDAR

- TUESDAY
Tug-of-war — 7 p.m.
- Just-Us — 8 p.m.
City Panfoll — 8 p.m.
King and Queen contest — 7 p.m.
Legs Contest — 7:30 p.m.
Tricycle race — 7:30 p.m.
Campus Chest Dance — 8:30 p.m.
- Frosh publicity — 7:30 p.m.
IK dinner — 7 p.m.
College Bowl — 7:30 p.m.
Frosh dance committee — 7 p.m.
- WEDNESDAY
Ugly Man contest — 8:30 p.m.
MUN — 7 p.m.
Big Name Entertainment — 7 p.m.
Spurs — 5 p.m.
AWS — 7 p.m.
Vandeletos — 4 p.m.
CUP — 7 p.m.
Mu Epsilon Delta — 7 p.m.
Vandal Flying Club — 7 p.m.
- THURSDAY
Ugly Man — 8:30 p.m.
Mortar Board — 5 p.m.
Alpha Phi Omega — 7 p.m.
Phi Delta Kappa — 7:30 p.m.
College Bowl-Borah theater — 7:30 p.m.
House auction-Campus Chest — 7 p.m.

U-I Budget Hopes Brighten

Legislators predicted a 25 per cent increase for the University of Idaho, and a 27 per cent increase for Idaho State University would be passed.
Governor Samuelson has recommended an appropriation of 15 per cent for Idaho and 21 per cent for Idaho state.
Dick Rush, ASU president, received those predictions from legislators during his trip to Boise Saturday.
Rush told the Argonaut yesterday that although passage of an appropriation larger than the one Samuelson recommended was fairly certain, whether the governor will veto it is still in doubt.
Rush said the increases for Idaho and Idaho State would be about the same except that Idaho State was getting some extra money to establish its school of nuclear engineering.
The 25 per cent increase is a compromise between Samuelson's figure and the U-I request of a 35 per cent increase, Rush said.
Samuelson has recommended \$17 million for the next biennium versus the current budget of \$14,725,081 and the UP's request of \$19,809,128.
In other news the Idaho State Board of Education said the Governor's Budget was inadequate. The statement said the appropriations were too low even for institutions "to do no more than maintain their present position as the most underfinanced public colleges in the west."
Superintendent of Public Instruction D.F. Engelking said that Samuelson had recommended some 6.8 million less than the department's request for the biennium.
House Speaker Pete T. Cencrusa, R-Carey, said the budget was too low for public schools and the state's two universities.



VOCATIONAL STUDIES STARTED—In answer to the over-emphasis on liberal arts studies, an unidentified student is seen in pursuit of some good old vocations training here yesterday. He must be going to ironing 107, the second semester extension of ironing 106. The class has a junior standing prerequisite. Due to lack of funds this year, students probably have to furnish their own boards.



MISS CAMPUS CHEST CANDIDATES—Among the candidates running for the title are left to right Mary Flack, Alpha Gam, Maile Morrison, A Phi, Susan Forney, Pi Phi, Ann Tuttle, Kappa, Michelle Burkett, Gamma Phi, and Karen Rember. (photo by Seale)



WORTHY CAUSE—The candidate who receives the most contributions will be crowned along with the Ugly Man Friday night. From left to right are Linda Berriocha, Hays, Pat Beau-doin, Campbell, Cathy Sanders and Jeannette Choules, Carier, and Susan Bernard, Forney. Not shown is Lee White Houston. (photo by Seale)

Queen Candidates Named For National Contest

Ten candidates have been chosen by various girls' living groups for the annual National College Queen Pageant. This Pageant is the annual event which gives recognition to students for their scholastic ability.

The Gamma Phi's are running four candidates which include Pam Jones, Marsha Clifford, Janice Johnson, and Leeann Goddard. Representing the Kappa house will be Michelle Dumas, Kathy Gies, and Pam Poffenroth.

Others include Suzanne Sload and Mimi Henrickson, Tri-Delt and Kathy Connor, Delta Gamma. The deadline for all entries is February 28 and there are a few living groups that have not nominated candidates yet.

Concert Is Set Thursday Night

PROGRAM
Prelude for Brass Quartet . . . Burrell Phillips
Darold Kludi, Mike Rowles, trumpets.
Gary Nyberg, Ray Cassing-ham, trombones.
There is a Lady Sweet and Kind. Norman Dello Joio
Under the Greenwood Tree . . . Douglas Moore
Larry Gee, baritone, Lois Grieve, piano.

Aupperle Art On Display

An exhibition of 17 oil paintings by Mrs. Helen Aupperle is currently on display in the Vandal lounge of the University of Idaho's Student Union building.

The exhibition is also a preview of a painting commissioned by Mrs. Vaughn Lattig McDonald, Moscow, which Mrs. Aupperle will create for the SUB permanent art collection. It will be in memory of Mrs. McDonald's late husband Dean Herbert Lattig. The painting will be hung in the Appaloosa lounge of the SUB.

Mrs. Aupperle is no stranger to Idaho art circles in general and the University in particular. She has toured for several summers with the Idaho Workshop on Wheels with University staff members Mary Kirlwood, Alfred Dunn and George Roberts.

A regular exhibitor and prize winner in galleries throughout the intermountain west, Mrs. Aupperle in 1966 was awarded a medal by the National Gallery of Art for outstanding service in art education. She has had exhibits at the Charles Russell Gallery, Helena, the Boise Gallery, and Jackson Hole.

She holds a bachelor's degree from the University of California at Los Angeles and a master's degree from Claremont, Calif., Graduate School. She has also studied at the Royal Academies of Art in Copenhagen and Stockholm, and the Chouinard School of Art.

RECI-TAL HALL
Thursday, February 23, 1967



FIVE FIGURES—The Campus Chest Committee is sponsoring the Miss Campus Chest contest for the first time this year. Among the contestants are Karen Bauer, Pine, Margie Black, The-la, Leslie Peterson, Tri Delt, and Jill Jeffers, Ethel Steele (photo by Seale)

Five Finalists Named In Dream Girl Contest

Julie Malony, Theta; Kathy Wilcomb, Alpha Chi; Barb Hardy, DG, Nancy Byers, Tri Delta and Emily Patterson, Alpha Gam, are finalists for Pi Kappa Alpha Dream Girl.

A new reigning queen will be chosen Saturday night at the annual winter dance. Dress for the banquet and dance is formal, with the dance featuring the Howell Hopkins Orchestra from Lewiston, closed to members and their dates only.

A dinner banquet at the SUB will start the evening. Guest speaker will be President Ernest Hartung. Other guests at the dinner will be Vice-President Kenneth Dick, Vice-President Walter Steffens, Dean Charles Decker, Dean Dewey Newman and Dean David Kendrick.

also featured at the banquet will be George Watdins, National Secretary of the fraternity. Semi-finalists were invited to dinner last Wednesday, and required to present a skit or show some talent, in accordance with the weird costume they wore.

All the girls received prizes for their performance. Sunday the semi-finalists were again asked to dinner. They were each asked two questions. One was an opinion question about current problems and the other was a lighter question about peculiar situations.

Other semi-finalists included Ann Murphy, Kappa; Sheila Cornisli, Gamma Phi; Connie Hoff-buhr, Pi Phi and Annie VanStone, Houston.

College Bowl Winners Are Announced

Winners in the last rounds of College Bowl were the Delta Chi and the Lambda Chi-Theta team. Lambda Chi-Theta scored 120 points to the FarmHouse-Tri Delta team's 105. On the winning team were John Wood, captain; Ed Sweatte, Bev Johnson and Polly Thompson. Representing the losing team were John Baker, captain; Larry Tobiska, Janie Slaughter and Mimi Hendrickson. Delta Chi defeated French 220-100. Max Walker was captain for the DC team. Other team members were David Broadhead, Rich Nelson and Larry Craig. Representing French were Jeanne Jacobs, captain; Ann Sutton, Susan Silvers and Carol Hohenberger.

Tyler-Bauer to Team For Recital Tonight

LeRoy Bauer, one of the veteran members of the University of Idaho's music faculty, will team with Paula Tyler Tuesday in another in the series of faculty recitals at 8 p.m. in the Recital Hall of the Music building.

Bauer, conductor of the University Symphony, has been on the Idaho staff for 12 years. Mrs. Tyler, a pianist, is half of the Idaho duo-piano team of Tyler and Bauer.

Major work of the evening's recital will be the "Sonata, Op 94," for violin and piano by Prokofieff. Also included in the program will be the "Chaconne," by Vitali, Schubert's, "Rondeau Brillant," "La Campanella" by Paganini, and the "Introduction and Rondo Capriccioso," by Saint-Seans.

College Group Tours Potlatch Forests Inc.

20 members of Alpha Kappa Psi accompanied by Prof. R. L. Chrysler, took a day's tour of Potlatch Forest Inc. Thursday.

The morning tour was centered around the production facilities and the electronic data processing department.

Student News of Record

POLICE COURT
Kendrick E. Thomas, 20, SAE, drunk in public, \$25.

John D. Dusek, 18, Borah Hall, attempting to purchase beer, \$50.

Jay V. Ramstedt, 21, off campus, speeding, forfeit \$15.

Patrick T. Nordeen, Delta Chi, driving under the influence of alcohol, forfeit \$150.

Here's More About Florabell

Florabell

"Do you want me to criticize it from a literary, social, or relevance standpoint?"

"Take two, they're small."

"I beg your pardon?"

"Just say anything that comes to mind. I don't care which way you stare."

"Well, it doesn't say much. I mean . . . well I don't want to insult you."

"You won't. I didn't write it and I'm sure the man who did won't lose sleep over what you say."

"Oh, the form is too loose; there are too few conventions used to merit calling it a poem. E. E. Cummings and Walt Whitman may have disregarded the same conventions, but their poetry merited, through ideas, the form—and the time to write it.

Second, there are no solid metaphors, images, or symbols. It's just a string of poorly placed adjectives. Third, the vocabulary is a strange mixture of French—'sans,' slang, and good words. It really upsets me to see a gem of a word like "Flaccid" used in that context. It's like wearing a Tiffany diamond with a Penney's cotton shift. Ah, the possibilities that word has! It's so erudite and lovely."

"That's enough, enough. I've got the picture. I suppose you like Edgar Guest and Sir Thomas Wyatt."

"One can hardly name the same two in a single breath. However, I find both of them extremely rewarding."

"You would. Back to the poem. As long as you mentioned it, do you think the idea is relevant?"

"No."

"Why, serious thinker?"

"Because today we have bathtubs to keep us clean, exercise to keep us trim, purpose to keep us living, work to keep us happy. Only the poor derelicts face the discomforts caused by the lack of these things—and they don't care because they're suffering, and suffering brings vibration with the infinite which is very desirable and besides that, their suffering is physical and physical suffering can be relieved and . . ."

"Oh, shut up. I've had enough. You keep the trashy poem. It might give you something to suffer about."

So that's how Florabell reacted to a part of the epic poem of our time. So I can't help it that she's an anachronism, an idealist, and downright disgustingly verbose, can I?

You can judge a company by the men it keeps

Like lots of companies, we want college graduates. We offer them careers, not just jobs. In fact, a majority of the college-trained people who have come to Armstrong are still with us. One reason for our low dropout rate is our high growth rate. We need college graduates who are looking for a place where they can grow. At Armstrong, an individual has plenty of room to move ahead. We make more than 400 products, from multifunctional building components to innovations in packaging, so career opportunities are practically limitless. Young people will find a ready-made market for their thinking and an opportunity to prove themselves—to get their ideas off the ground and into use. We stick by our college graduates. Maybe that's why they stick with us. See your Armstrong representative when he is on campus soon. For more information about Armstrong now, see your placement officer or write the College Relations Department, Armstrong, Lancaster, Pa. 17604.

Armstrong / Manufacturer of resilient floors, ceilings and other building products, packaging materials, industrial products, and home maintenance specialties.

An Equal Opportunity Employer

A progressive, diversified organization offering rewarding careers in accounting • advertising • employee relations • engineering • industrial engineering • marketing • production planning • public relations • research and development.

BARGAIN DAYS

STARTING WEDNESDAY
TAKE ADVANTAGE OF THESE SPECIALS

Men's Dept.

- 1 Rack, Button Down SHORT SLEEVE SPORT SHIRTS 1/2 price
- WINTER JACKETS \$12.50
Reg. to \$28, now
- VELOURE SPORT SHIRTS \$4.19
Reg. to \$10, now
- 1 RACK JACKETS \$5.00

Women's Sportswear Dept.

- 1 Group Wool, part wool, and Stretch Slacks. \$7.88
Size 7-18, Values to \$17, now
- 1 Group SKIRTS \$7.88
Size 5-16, Values to \$17, now
- 1 Group KNIT TOPS 1/2 price
- 1 Group SKI SWEATERS \$9.88
Reg. \$19, now

Ready-to-Wear Dept.

- 2 Groups of DRESSES, \$5 & \$7
Reduced to
- 2 Groups of DRESSES, \$9 & \$11
Reduced to
- 1 Group TEXTURED HOSE 2 pr. 69c
Values to \$1.65, Now
- 1 Group COTTON SHIRTS \$3.19
And COFFEE BREAKERS. Values to \$9, Now

MANY OTHER BARGAINS NOT LISTED!



BARGAIN DAYS SPECIALS

DRESSES
1 GROUP
Values to \$30
\$11.22

CAR COATS
6 ONLY
Values to \$45
\$15.00

ALL
99c HOSE
59c

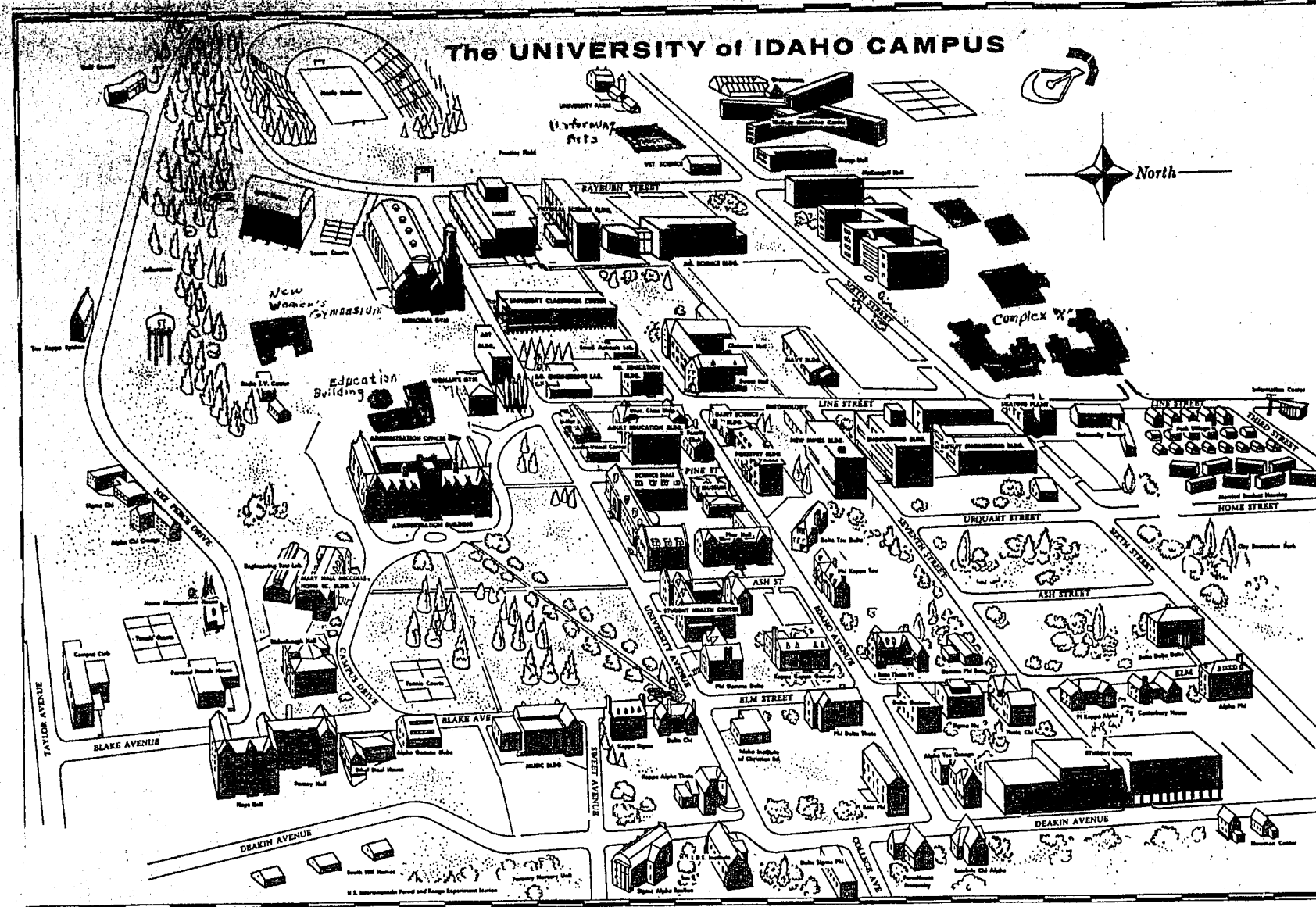
SWEATERS
1 GROUP
Values to \$13
\$5.00



Women's Apparel

219 S. Main

Moscow



Bids Out In April For Construction

By DWAYNE ABBOT
Argonaut Reporter

U of I campus will see new construction beginning after April of this year, when the College of Education building and the Industrial Education building go up for bid.

Other buildings which will soon be additions to the campus, said Ken A. Dick, vice-president for Financial Affairs, are the Women's Health Education Building and Complex "X". He added that a special project to cover Paradise Creek will take place this coming summer in preparation for the new complex which will be located behind Gault Hall.

The College of Education building and the Industrial Education building are part of the same project and have a total budget of \$2,089,908.

The main Education building will be located behind the Administration building and will cover the bank on the west side of the baseball field. Three stories will face the Ad building on the back side with five stories at the front.

During the interview Dick said that the building was needed because of the large increases in the enrollment in Education. "With 1,150 students registered in the College of Education and from two to three hundred students in Letters and Science interested in teaching, a building of this nature and size is needed on campus," he said.

"It should also be taken into consideration that the University is a large producer of teachers, and presently there is a lack in specialized and technical

classrooms. The new Ed building will include both types of classrooms."

The Ed building will also include a specialized circular auditorium, as indicated on the map.

The Industrial Education building will go under construction at the same time as the Education building and be located on Sweet Avenue, east of the SAE house. Dick said that because of increased interest in the Industrial art at U-I, the building is also needed.

A Women's Health Education Building which will be built in the baseball field, will replace the old women's gym. The old gym, constructed in 1904, was given to the women in 1928, when Memorial Gym was built.

"At that time," said Dick, "the total registration was approximately 1,800 with 681 women. Now we have 1,745 women and the present need should be obvious. It is also anticipated that there will also be a strong increase in the women's enrollment in the future."

The budget for the building will be approximately \$1,250,000. The building will include largely instructional space and the women's P.E. offices. There will be two stories with the main instruction rooms on the first floor.

The old Women's gym will then be given to the Arts and Architecture department for displays and instruction.

Americana Concert Set Thursday by Honoraries

A concert featuring the work of American song writers will be presented at 8 p.m. Thursday at the Music Building Recital Hall by members of Phi

Mu Alpha, men's music honorary, and Sigma Alpha Iota, women's music honorary.

Only members of the two music organizations will perform. They have selected their own numbers which are all American compositions. No special time period in the history of American music is to be emphasized, but most are contemporary, according to Jante Satre, Campbell.

"We have planned a good program and hope a lot of people come," Miss Satre said. "American music often isn't emphasized enough because for a long time American composers did not do much of note."

Performers in the program include Miss Satre; Larry Gee, Campus Club; John Lind, off-campus; Diana Gray, Alpha Phi; Darryl Hatch, Forney; John Henderson, off-campus; Darold Kludt, Delta Sig; Mike Rowles, Delta Sig; Gary Nuberg, SAE; and Ray Cassingham, Lindley.

The men will perform as a group "Stopping By Woods on a Snowy Evening," from "Frostiana" with music by Randall Thompson and words by Robert Frost. The entire group will sing "Holiday Song" by William Schuman.

Members of the two music honoraries combine voices once each year for a concert and participate jointly in several other activities. The groups arrange and direct their own materials. Advisers to the honoraries are Mrs. Dorothy Barnes and David Siler, both of the music department.

A vacant lot across from the completed Wallace Complex is the site for the performing arts center which is presently on the drawing board. The plans have not been completed yet, and the Board of Regents have not acted upon the matter.

Here's More About... Student Rights

Miss Felton then explained the AWS committee's past action on women's hours which included last year's extension and questionnaire sent to parents similar to the one issued this year. She pointed out the results will be evaluated and also compared to nationwide surveys and hours at other Idaho educational institutions.

Emma Sawyer, Pine, said, "As educated women we have the right to determine our own hours. If we can prove to people that we are responsible enough, then we shall get that privilege."

Charles Sievert, Upham, publicity chairman, said "This meeting should be evidence enough to show that there is a definite student interest in changing the University's regulations on women's hours and that this interest seems to favor more liberal policies."

McCoy pointed out the four areas of Committee interest, which include, Women's rights, publicity-public relations; academic, and a student bill of rights.

Those included on the sub-committees are women's rights, Linda Knudsen, Pi Phi; Dani Jo Ayar, Forney, and Christi Capis, Houston; publicity, Charles Sievert, Upham, and Linda Knudsen, Pi Phi; Academic, Mike McCoy, SAE, and Greg Otto, Delta Chi, and Student bill of rights, Bob Young, SAE, Dan Eismann, Sae, is secretary - treasurer.

Dr. Hiams, suggested that speaking from the stand point of the Moscow resident, he felt the town's people would go along with the student's ideas if they handled the problem in an intelligent manner.

Hiams said, "You have far more support than you know in many places."

Returning to their home, the six Grecians are ship-wrecked and separated from each other. After 18 years, the six unknowingly meet in Syracuse and are involved in a "which is which" game.

Following mistaken identity episodes, the merchant, his wife and both sets of twins are reunited, bringing to an end all the errors of many years.

According to classical and modern drama critics, "The Comedy of Errors" situations make the farce, with the characters being only incidental to the plot. Critics say that Shakespeare's chief purpose in the play was to entertain with scenes of hilarious confusion. Each "Comedy of Errors" character is placed at the right spot at the exact moment to increase the confusion already existing in the story.

In writing the play, Shakespeare, according to modern critics, enhanced Plautus' sense of comedy.

The Drama Department is rehearsing now in the University Auditorium for presentation of the Shakespearean comedy.

"Comedy of Errors" Set For March Showing

"The Comedy of Errors," a comedy by William Shakespeare is to be presented March 9-11 by the Drama Department. It was inspired by the "Twin Medaechmi," an ancient Roman comedy by Titus Plautus.

First presented in 1595, "The Comedy of Errors" borrowed its basic plot from "The Menaechmi." The "Errors" farce tells of a Greek merchant of the first century B.C. and his wife also gives birth to a set of twins.

For financial reasons, the wo- Critics say that Shakespeare's man gives the merchant and his wife her twin boys to act as attendants to the merchant's sons.

Rare War Films Will Be Shown

Rare war films taken by German and Russian combat cameramen are highlights of "The War Relived," a television special on the University of Idaho's KUID-TV, Channel 12, February 22 at 9 p.m.

As it spans six years of war the German film asks: "Who cheered? Who obeyed? Who is guilty?" From the destruction of nations, the film moved repeatedly back to Germany—the boastful headlines and the fervent demonstrations.

Meanwhile on three fronts—Russia, Africa, and the Atlantic—"The War Relived" reflects the war's changing tide. In Russia, especially, the battle is portrayed with devastating impact. Athome, German headlines erroneously read "War in East decided," while the army is diverted away from Moscow toward Stalingrad. Then in the winter of 1941, the Russian army is seen counter-attacking on skis. Finally there is Stalingrad, and the other defeats which it signals.

In the end, Hitler, "the madman in the bunker," is seen leading Berlin's last defenders—the sick and the old, men in overcoats and children of 14 sporting "their decorations and their destroyed youth."

he's been putting in these pies?" After a shocked silence at this scurrilous prophet's scurrility, the citizens found their voices. "What's the difference?" "They're good pies, aren't they?" "Don't you know apple pie has always been our favorite?" "What are you some kinda commie?"

"No," replied the discordant one, calmly hanging there by his thumbs, "I just thought we ought to know what it is we are being asked to swallow."

"Don't you like apple pie?"

"Of course I love apple pie. I'm not against apple pie, but I do believe in 'Absolute Honesty' in packaging."

"Well, we're glad you like apple pie, 'cause you're going to eat a lot right now." And so saying, the good citizens administered the execution.

"C'est une patisserie," ("That's how the pie slices") they shrugged, munching their singular diet.

Yours in honesty, purity, unselfishness and love—I hope, Chad Boliek

Dear Jason

Dear Jason, February 22, 23, and 24 twelve University of Idaho juniors and seniors are going to the larger high schools in southern Idaho to interest high school seniors in attending the University of Idaho.

This tour is designed to familiarize these students with Moscow, what the University has to offer, and how it will benefit them.

Trouble started when the Administrative Council, composed of the Deans of the various colleges, refused to give this Student Recruitment program their un-

qualified support. They almost rejected the entire program.

The Boise school system first gave its consent to the program, but after learning that the administration of this school did not fully support the program, they withdrew their approval. As a result, these student representatives from the University will not be able to talk to the high school students from Boise, Borah or Capital. This is roughly 1,500 seniors.

Once again the majority of the Boise students will go to Boise College or to schools out of the state as they have in the past.

And as usual the University of Idaho will lose many fine students and potential leaders simply because these students are not familiar with this school.

Why were the Deans opposed to this program of Student Recruitment?

Perhaps they were opposed to it because they were afraid of starting a tradition that might prove to be a bad thing in years to come.

If they are afraid of something new, are they also afraid of progress? It would seem to me that they would be in favor of any program that would recruit top caliber students for their respective colleges.

The Deans were opposed to excusing from classes the twelve men who would be doing this recruiting, but since these twelve men are actually doing the Deans' work, which is recruiting students for this institution, why do they not support this effort?

Are they opposed to someone trying to help them get good students in this university?

Finally the Deans opposed this program because it was organized by the Interfraternity Council and were afraid this would bias the tour.

The Interfraternity Council organized this program because

Deans Draw Anger From U-I Recruits

Campus Minister Parables Actions

Deans Draw Anger From U-I Recruits

Campus Minister Parables Actions

Warren's Drug

Big Savings During MOSCOW BARGAIN DAYS

BRUSH ROLLERS 1/2 price

Nutritive Cream

Shampoo, reg. \$2.00, now \$1.59

Vitamin C Tablets

Bottle of 100, now 49c

Gloss Overs by Max Factor

Lip glass stick and iridescent top gloss for nails, reg. \$2.20 \$1.50

Clairal Color and Contour Kits

Now in our stock \$2.00

WARREN'S DRUG

204 S. Main 882-2622

Moscow

MOSCOW BARGAIN DAYS SPECIALS

WINTER JACKETS, Reg. \$19.95 to \$20

Now \$10.22

ALL OTHERS 1/3 off

SWEATERS, were \$19.95, now . . . \$12.22

CORDS and SCRUB DENIMS

Reg. to \$6.95, now \$3.22

Reg. to \$10.00, now \$4.22

1 Group MOD Clothing 1/2 price

—Plus—

MANY MORE SPECIALS

MYKLEBUST'S

MOSCOW, IDAHO

the traditional BROGUE ROBERTS

ROBERTS

A man's look . . . smartly styled for any dress occasion and bold enough to satisfy your man-size taste. Brogues mean business . . . smart business!

\$12.99 to \$19.99

ROBERTS

Larry's Shoes

210 S. Main 882-2122

WSU Registration Reaches 10,013

Spring semester enrollment at Washington State University has set a new record of 10,013 Registrar Claude Simpson revealed Friday.

The figure marks the first time enrollment has been over 10,000 at WSU for the spring semester. The fall semester enrollment of 10,662 also was a new record.

Late registration was to conclude Friday and the final figure could be slightly higher, Simpson added.

University Dames will meet at 8 p.m. Wednesday in the Faculty Club. There will be a business meeting followed by a speaker from the opportunity school.

Deans Draw Anger From U-I Recruits

Campus Minister Parables Actions

Warren's Drug

Big Savings During MOSCOW BARGAIN DAYS

BRUSH ROLLERS 1/2 price

Nutritive Cream

Shampoo, reg. \$2.00, now \$1.59

Vitamin C Tablets

Bottle of 100, now 49c

Gloss Overs by Max Factor

Lip glass stick and iridescent top gloss for nails, reg. \$2.20 \$1.50

Clairal Color and Contour Kits

Now in our stock \$2.00

WARREN'S DRUG

204 S. Main 882-2622

Moscow

DR. J. HUGH BURGESS

Optometrist

Complete Visual and Lab Services

CONTACT LENS SPECIALIST

Special Attention to Reading Problems

CONSULTATION FREE

Office hours 9-12—1:30-5:00 Monday thru Saturday

O'Connor Bldg. Over Larry's Shoes TU 2-1344

the traditional BROGUE ROBERTS

ROBERTS

A man's look . . . smartly styled for any dress occasion and bold enough to satisfy your man-size taste. Brogues mean business . . . smart business!

\$12.99 to \$19.99

ROBERTS

Larry's Shoes

210 S. Main 882-2122

"Par Bridge Is Tough"

Idaho Bridge Team Beaten

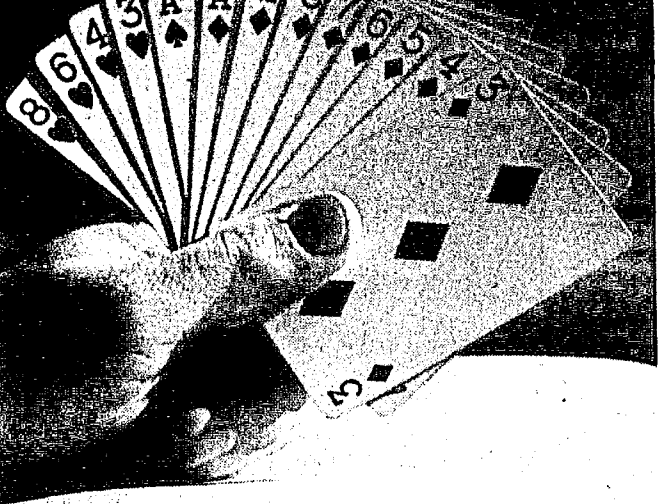
By ROGER ANDERSON
Argonaut Managing Editor

"It's my ball, so you'll play by my rules!" was the way Bill Wilson, Delta Sig described par bridge.

Wilson made the comment after Idaho's "best pairs" got wiped out in their first try at the game Friday.

Steve Davis and Stroud Kunkle, and Wilson and this reporter, all Delta Sig's, studiously fought each other for last place at The Association of College Unions regional tournament at Pullman.

Par bridge, as Wilson noted, is an entirely different animal from rubber or duplicate bridge. Each hand is a trick hand and points are only scored if the



WHAT DO YOU BID?—You're North. West has dealt and bid two no trump. What do you bid now? (See story for answer) The hand is one set up by bridge experts Lawrence Rosler and Jeff Rubens for the Intercollegiate Bridge tournament regionals in Pullman Friday. (photo by Seale)

player figures out the trick, and not necessarily if the contract is made.

The big time contestants that played in the tournaments were entirely different animals also.

"They not only figured out how to play their own hand, but they master points they'd get for making it," Kunkle said afterward.

If you're confused now it's probably because I'm still in a state of shock. So let me just highlight the disaster for you.

We walked in and were handed a card on which we were to write what our Stayman was forcing to, what our weaktwo bids meant, what a Notrump response to a major meant, what 1 NT to a 1 club bid meant, what an overall in opponents suit meant, what unusual overcalls meant, and which class two contentions and systems we used.

I looked at Wilson and said "Duh." Wilson looked back and said "Duh." Our first opponents told us to just check the box by "Standard American" which at least sounded patriotic to us.

So the first deal began. I picked up my hand, tensed up, and hunched over my cards, a position I was to assume for the rest of the tournament.

Our opponents who were North-South took the first contract. Half way through the play while I was worriedly trying to find a way to set them, dummy spoke up: "Throw in the cards, we've already missed it."

"Huh?" I said. "Aren't we going to see how many we set you?"

"Oh that doesn't matter, since we didn't play it right," he said and proceeded to open the deal's scorecard and read how the hand was supposed to be played.

The second deal was the same with the hand being interrupted in the middle when our opponents announced that they had lost again.

"Well, partner, we must be doing pretty good," I said.

"Oh it didn't help you at all!" North countered. "This time we were tested; some other time the test and points will be on the line for you."

Beginning to understand we switched tables and opponents. Wilson easily passed the test and took us to the proper six spade contract, while our opponents botched their test and failed to set us.

The time it took to play one hand was tremendous. It took 11 hours to play 24 hands.

Kunkle and Davis said they timed one opponent who took 10 minutes and 32 seconds figuring out his opponents' hands on a piece of paper.

Another took 30 minutes to figure out four different lines play depending on card placement (eventually choosing the wrong one).

On one deal Wilson led the king of spades, and the opponent took

ten minutes before deciding to play the ace. When he finally did, his wife squealed: "We played a card!"

As you can guess the tension was also terrific. I watched Wilson play one, his face so tight, not even sweat appeared on it. Suddenly Wilson's face relaxed, his eyes widened, and he said softly "Oh," as if the skies had opened and a deep voice had said, "Play the ace."

On another deal Wilson was concentrating so hard on his line of play that his cards flew up and out of his tense fingers, and scattered on the floor.

All of the hands in the tournament were weird and tough, a couple of examples will suffice:

You're north. West has dealt and opened with two notrump. You hold:

North holds:
S — A
H — 8643
D — AK976543
C — void

What da ya bid, huh? What da ya bid?

Would you believe Five Diamonds? No? Well Kunkle bid it, and was the only one to hit it. If you were West with one sure Diamond trick would you double? Are you sure?

West holds: S — QJ109 H — AKQ10 D — Q102 C — AK

East holds: S — 742 H — 9752 D — void C — J97542

South holds: S — K8653 H — J D — J C — Q10863

The opening lead is the two of hearts. With the lead of the heart North has four losing hearts and a losing diamond and only one sluff in dummy, the king of spades. That still leaves him with four losers.

If West, after winning the first trick leads back anything except trump, North will be able to trump two of his losers.

If West leads a low diamond, north can let it ride to the jack, thus completing a finesse on West's queen. Thus North will lose only two hearts.

But if West leads his good diamond queen, North must either use the diamond jack to remove trump (thus leaving him with three losers in hearts) or trump a heart with the jack (thus giving up two hearts and one diamond loser).

Would you have spotted the diamond lead? Yours truly flubbed it. Like I said they were all weird hands.

After all of this I'm glad that not many duplicate sessions were held here before Idaho's qualifying tourney, that not too many showed up for Idaho's qualifying round, and that Wilson and I were able to replace Idaho's original East-West team.

I wouldn't have missed it for the world.

Farm House Elects Quesnell Prexy

Initiation and election of officers is top news in living groups this week. President at Farm House is Mike Quesnell; Mike Husted, pledge class president at the Pi Kap house; and Ruth Van Slyke, Ethel Steel.

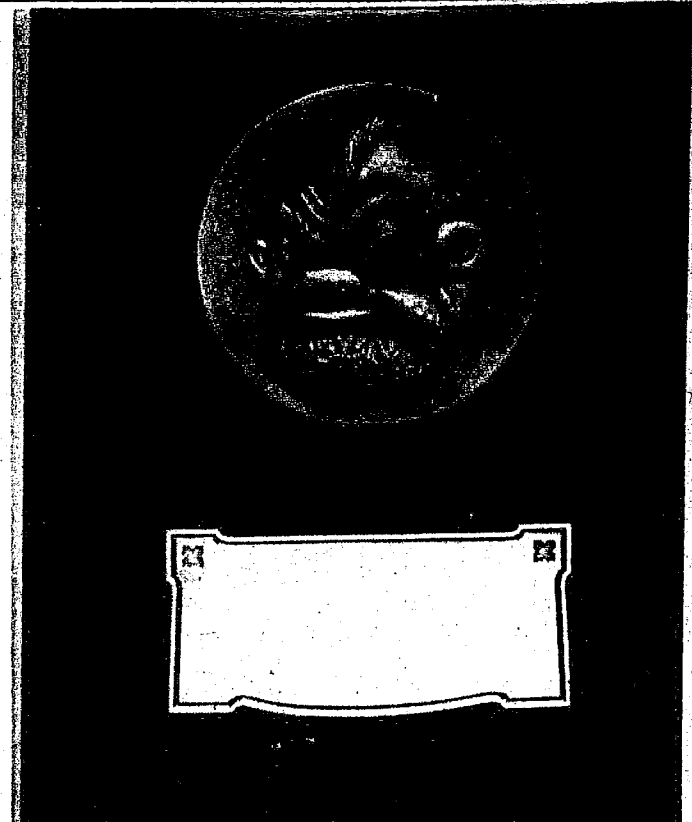
FARMHOUSE Installation of newly elected officers at FarmHouse was held recently. New officers are Mike Quesnell, president; Milt Johnson, vice-president; Loren Honstead, business manager; John Baker, treasurer; Roger Hamilton, recording secretary; Bob Kee, house engineer; Gary Clark, social; and Kent Christensen, corresponding secretary.

Others include Ed Simmons, public relations; Rick Ross, scholarship; Paul Follette, intramural; Mark Lehrman, assistant intramural; John Sandy, historian-reporter; John Tolk, assistant historian-reporter; Gene Rinenold, activities chairman; Dennis Bodily, song leader; Rick Hoge, rush chairman; John Ferebawer, assistant rush chairman; and Dennis Bodily, political representative.

PI KAPPA ALPHA Newly initiated members of Pi Kappa Alpha are Dr. Charles Simmons, advisor; Harvey Harding, Wade Curtis, Steve Warner, Joe Ledgerwood, Bill Graham, Spike Williamson, Charlie Wright, Jim Barnes, Steve Eismann, Mick Nance and Dana Deist.

New pledge class officers are Mike Husted, president; Tom Robinson, vice-president; and Monty Nail, secretary-treasurer.

ETHEL STEEL At a recent housemeeting, a new slate of officers was elected for Ethel Steel. They include: Ruth Van Style, president; Susie Smith, vice-president; Jill Jef-



THE ANCIENT VANDAL—This plaque will be awarded to the Ugly Man at the Campus Chest Dance Friday. The winner will be the candidate who has received the biggest contribution for the drive. (photo by Seale)

ICEP Observing Idaho Legislature

A group of 14 students and a faculty member and university administrator are at the state capitol today, probably appearing to be a lobby for education.

In actuality they are sponsored by the Idaho Center for Education in Politics, (ICEP), and are there for strictly educational purposes.

The group left Sunday noon and are scheduled to return tonight according to Jim Tegan, off campus, ICEP President.

Tegan said the group was scheduled to meet with the governor yesterday morning, and will have a session with the budget committee director. They will also be introduced on the floor of

both houses and are set to attend at least four committee hearings. He said they have permission to attend all the hearings, but will be "playing it by ear" to see which ones will be possible.

Governor Samuelson and Rep. Harold Snow, R-Latah have arranged the group's visit, he said.

Rodeo Riders Club Organization to Meet

A reorganization meeting of the Vandal Riders Rodeo Club will be held at 7 p.m., Thursday in Room 204 of the Agricultural Science Building.

Senior Job Interviews

February 21—CROWN-ZELLERBACH. Engineering Bldg.
HEWLETT PACKARD COMPANY, Engineering bldg.
PACIFIC MISSILE RANGE (Point Mugu). Engineering Bldg.
PACIFIC NORTHWEST BELL TELEPHONE SYSTEM. Placement Office.
FIFE, WASH., PUBLIC SCHOOLS. Placement Office.

February 23—L. H. PENNEY ACCOUNTING COMPANY. Placement Office.
SPERRY UTAH COMPANY. Engineering Bldg.
GENERAL FOODS CORPORATION. Placement Office.
SAN FRANCISCO BAY NAVAL SHIPYARD. Engineering Bldg.
SIMMONS COMPANY. Placement Office.
HUMBLE OIL AND REFINING COMPANY. Engineering Bldg.

February 24—UNION OIL COMPANY. Engineering Bldg.
PUGET SOUND NAVAL SHIPYARD. Engineering Bldg.
STATE OF HAWAII—DEPT. OF EDUCATION. Placement Office.
AIR FORCE MISSILE DEVELOPMENT CENTER (New Mexico). Engineering Bldg.

Feb. 23-24—IDAHO NUCLEAR CORPORATION (Idaho Falls). Placement Office.
BOEING AIRPLANE COMPANY. Placement Office.
CHEVRON CHEMICAL COMPANY (Or-tho Division). Placement Office.
STANDARD OIL OF CALIFORNIA AND CHEVRON RESEARCH COMPANY. Engineering Bldg.

February 27—JUVENILE PAROLE SERVICES (Washington). Placement Office.
SUNDSTRAND CORPORATION. Engineering Bldg.
POTLATCH FORESTS. Placement Office
TEXAS EASTMAN COMPANY. Engineering Bldg.

SKI TAMARACK
6 miles north of Troy
Open: Saturday and Sunday

FACILITIES:
2000 ft. T-BAR
800 ft. Beginner's Rope Tow
3 Story A-frame Lodge and Cafe/era
Certified Ski School
Bus Service on Sat. leaves Marketire Shopping Center at 8:30 a.m.
Open Wednesday, Wash. Birthday

Ad Must Be Brought In With Garments

Dry Cleaning SPECIALS

Garments Listed Below

Professionally Dry Cleaned and beautifully Pressed. **50¢** each

Pants—Ladies or Mens

Skirts—Plain

Sweaters—Plain

SHIRTS... 4 FOR 99¢
Laundered and Pressed

No Limit

Offer Expires Saturday, February 25

ONE HOUR "MARTINIZING" THE MOST IN DRY CLEANING

Corner 5th and Main Moscow

ONE HOUR "MARTINIZING" THE MOST IN DRY CLEANING

Ad Must Be Brought In With Garments

More education?

Come on, IBM, you're putting me on!

Yes, we are. We're putting you on the track of an exciting new kind of career for men and women with IBM's Data Processing Division. A career in Computer Applications.

Just what is Computer Applications?

It's a mix of your engineering, scientific or math education with your ability to solve business problems and advise business management. A mix that can give you opportunities for growth, advancement and financial reward.

Best of all, IBM will train you for your new career. (That's where the "more education" comes in.) At full pay, of course.

When you've completed the extensive training program, you'll use your newly mixed talents to advise our customers on the most effective and efficient ways to apply IBM's information processing equipment to their business problems. So, come on. To an exciting, rewarding future.

IBM

Whatever your immediate commitments, whatever your area of study, sign up now for an on-campus interview with IBM, March 7.

If, for some reason, you aren't able to arrange an interview, drop us a line. Write to: Manager of College Recruiting, IBM Corporation, 3424 Wilshire Boulevard, Los Angeles, California. IBM is an Equal Opportunity Employer.

