



The Idaho Argonaut

The University of Idaho - MOSCOW, IDAHO

Vol. 79 No. 1

Tuesday, September 9, 1969

Hartung tells class of 1973 responsibility is key to future

New faculty faces appear in positions

A number of new faculty faces will appear in key positions at the University of Idaho this coming fall.

Among the new administrative personnel on campus will be Dr. Robert W. Coonrod, academic vice-president. He succeeds Dr. H. Walter Steffens, who retired in June after more than 40 years service to the university.

Coonrod comes to Idaho from the position of Dean of the College of Arts and Sciences at the University of Montana. Before going to Montana in 1960, he taught at Arizona State University and the United States Military Academy. At Arizona State in 1959, he was named by students as one of the four "great teachers."

New heads of the departments of mechanical engineering, music, art and architecture, home economics, physical education for women and English will also be present.

Dr. Richard B. Stewart, professor of engineering at Worcester Polytechnic Institute, Worcester, Mass., will become professor and head of mechanical engineering.

A native of Waterloo, Iowa, he holds a B.S. M. E. and M.S. degrees from the University of Iowa, an M.E. degree from the University of Colorado and a Ph. D. degree from the University of Iowa. He succeeds Professor George E. Peterson, who died recently.

Assuming the position as Idaho's head of music will be Dr. Floyd H. Peterson, head of the department of music at Nebraska Wesleyan University, Lincoln. He succeeds Hall M. Macklin, who retired after 34 years of distinguished service to the university.

A native of Chicago, Dr. Peterson received B.M. and M.M. degrees from Northwestern University and his doctorate from Indiana University. He is an accomplished clarinetist.

The new head of the department of art and architecture will be Robert E. McConnell, professor of architecture at the University of Kansas. A native of Spokane, he is an architectural graduate from Washington State University and holds his master's degree from Massachusetts Institute of Technology.

For 13 years, he was a professional architect and designer. He succeeds Professor James Jarett, who resigned a year ago. During the interim period, Professor Charles Bartell had been acting head of the department.

Another new department head will be Frances J. Parker, home economics. She completed her doctoral studies at Ohio State University, where she has been serving on the staff of the Educational Resource Information Center.

She has her B.S. degree from San Fernando State College and M.A. from of Long Beach State College in California. Dr. Parker succeeds Dr. Gladys I. Bellinger. During the interim period, Dr. Florence D. Aller, has been acting head of the department.

Moving up to the position of chairman of physical education for women will be Professor Edith Betts, a member of the university faculty since 1951. She replaces Professor Mabel Locke, who asked that she be relieved of administrative duties to devote full time to teaching.

A member of the faculty since 1930, Professor Locke is nationally recognized in her field, and has been serving this year as president of the American Assn. for Health, Physical Education and Recreation. Professor Betts was granted a Fulbright fellowship in 1955 to teach for a year in Burma.

Becoming head of the new department of English, which was one of the four separate departments formed from the previous department of Humanities, will be Dr. Leo F. Storm, chairman of English at Seattle University.

During the past year, he was a visiting professor at the American University in Cairo. A graduate of the University of Washington, he holds his M. A. degree from Edinburgh University, Scotland and his Ph. D. degree from Washington.

Other departments formed from the humanities department include history, political science and public affairs and speech and drama. Dr. William E. Greever will be head of history; Dr. Robert E. Hosack political science and public affairs; and Associate Professor Edmund M. Chavez, speech and drama.

Other personnel changes include Dr. Gordon Bopp, associate professor of chemical engineering, named acting chairman of chemical engineering. Dr. Thomas O. Bell, assistant dean of the College of Education moved up to associate dean and Dr. Laurence Carlson, assistant professor of special education, was designated acting head of the department of special education.

"Even though the University is here to help you, it is still your responsibility to determine what kind of an adult you will be," University of Idaho President Ernest W. Hartung told members of the incoming class of 1973 Sunday night.

Addressing more than 1,500 freshmen at the President's Convocation, Dr. Hartung said:

"The university will help you in shaping your future, but it cannot act like a substitute parent. It will not assume the role of the parent. If one expects that and

the restrictions that a family places, then he will go wrong.

"You will also find that the university is not a continuation of high school. It is not merely more of the same. Here the perimeters are vast and challenging, and the approach is quite different.

"In choosing the University of Idaho, you have chosen wise and well. You have come to the most powerful educational tool that the state can afford. Through its eight colleges and graduate school, the university offers you the opportunity to develop your educational capacities to their fullest. You are fortunate to have come to a university like this — how fortunate, depends on how you use it."

Another speaker, Associated Students President Jim Willms, Gooding, also challenged the new students. He said:

"Many students come to the university with a false idea about education. They feel it is just an accumulation of knowledge. This is wrong. If you are to graduate a truly educated person, then you must be able to relate knowledge to those in other fields. Your future success in life may very well depend on this ability."

Neale Stadium condemned, WSU field used

Neale Stadium has been condemned. According to Dr. Sherman S. Carter, financial-administrative vice-president, the 32-year-old stadium was declared unsafe for use this August. The action was taken after a survey by engineering consultants found the frame facility unsafe.

"No sane engineer would say that the stadium is fit to play in. Some of the supporting columns are hanging in mid-air. At first we thought it could be patched up, but there is no way it can be done."

Dr. Carter said that this problem would not speed up the plans for the athletic complex now under a feasibility study. "We have a blueprint to follow for the planned complex and there is no way we can speed it up," he said. "There is no foreseeable way we can get the facility done before the fall of 1972."

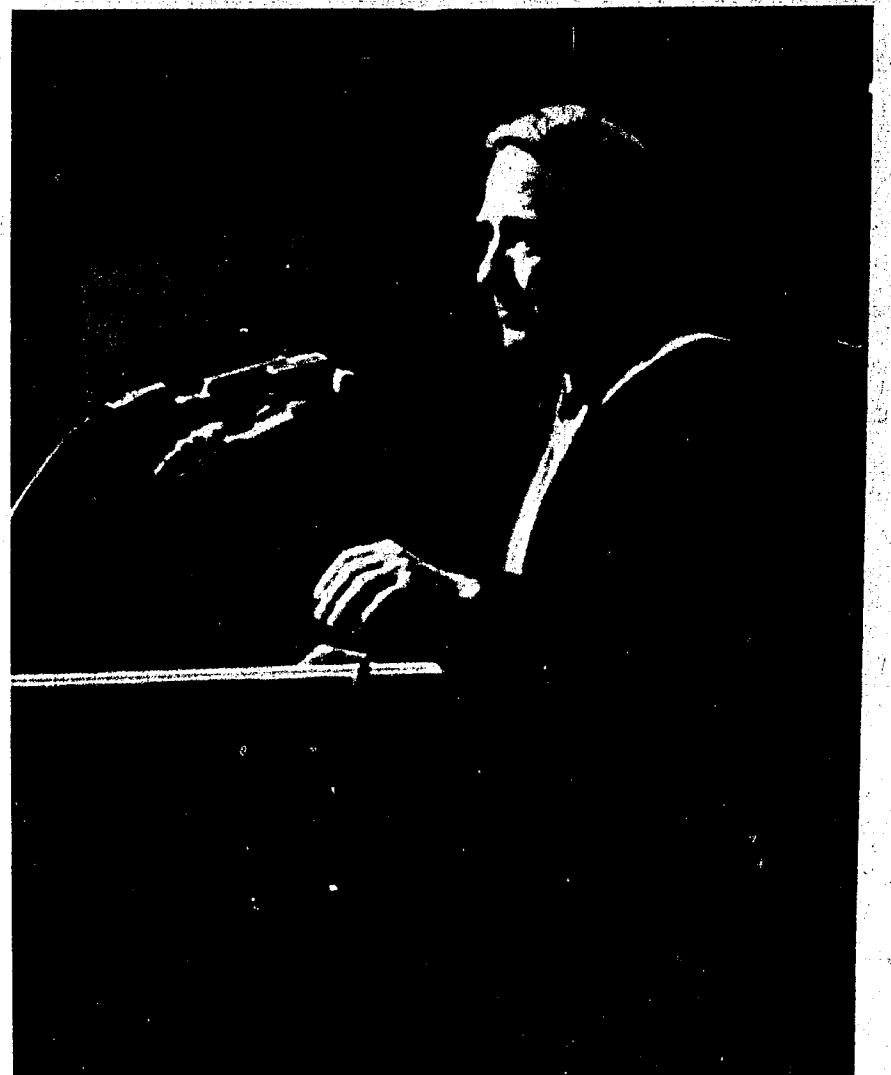
This fall Idaho will play its three 1969 home football games on Washington State's Rogers Field. Regents approved the leasing of the WSU stadium at their Boise meeting on Sept. 5.

Under the rental agreement for Idaho's 1969 home games on Rogers Field, Washington State students will be admitted to the contests at \$1 per game. The University of Idaho games to be played on the WSU gridiron are:

Idaho State — September 27
Montana State — October 25
Utah State — November 22
Neale Stadium was dedicated Sept. 25, 1937. The stadium was named after Dr. Melvin Gordon Neale, who was named president of the University in 1930.



IDAHO'S BLEACHERS ARE FALLING DOWN, falling down — Bleachers in Neale Stadium have been condemned. A survey by engineers showed the 32-year-old facility to be unsafe for football action this fall. Idaho's home games will be played on the WSU field.



"COLLEGE IS NOT A CONTINUATION of high school, but something totally different," University of Idaho President Ernest Hartung told incoming freshmen at the annual Convocation Sunday.

Spokane foundation gives FPAC \$100,000

An evidence of faith in the University of Idaho as a progressive center for cultural education has been demonstrated by the giving of \$100,000 from a Spokane foundation to the Fund for the Performing Arts Center.

The \$100,000 gift from the George Frederick Jewett Foundation of Spokane raises the total contributions to the Fund for the Performing Arts Center to well over \$1.2 million.

The announcement of the major gift to FPAC came from Mrs. David W. Gaiser of Spokane, trustee of the Jewett Foundation.

"The receipt of this gift from the Jewett Foundation is particularly encouraging to the hundreds of volunteers who have worked on behalf of the Fund for the Performing Arts Center during the past two years," University President Ernest W. Hartung said. "We know that this will give renewed vigor to volunteers across the country who are seeking to establish this significant addition to the university campus and curriculum. It is obvious that the new Performing Arts Center will enrich the cultural life of the campus and the whole Northwest, and will provide a new incentive for academic attainment in the performing arts."

The Jewett Foundation gift is the expression of continued interest of family members in the University of Idaho. In the early 1950's, Mr. and Mrs. George Frederick Jewett gave the pipe organ in the Music Building as a memorial to Mr. Jewett's mother,

Margaret Weyerhaeuser Jewett. The late Mr. Jewett was then Chairman of the Board of Potlatch Forests, Inc., and a director of the Northern Pacific Railway.

Another family member, George Frederick Jewett, Jr., is now vice-president of Potlatch Forests, Inc., and a member of the Potlatch Foundation Board, which has been instrumental in providing gifts from Potlatch Forests, Inc., to the University of Idaho for scholarships and research grants over the years.

Members of the family are noted for their philanthropic endeavors throughout this area. Family members were

responsible for funding the YWCA in Lewiston, and a gift from members of the Jewett family provided the construction of the Jewett Memorial Auditorium at the College of Idaho.

New traffic lights placed on UI campus

In cooperation with the ASUI, the university of Idaho's physical plant has installed new traffic lights at the intersection of Sixth and Rayburn Streets next to the Wallace Residence Center.

The lights were installed in answer to student requests for traffic control during the peak hours of student travel between the residence complex and classroom sections of campus, according to George Gagon, director of the physical plant.

Jim Willms, ASUI president, noted that "the protection and convenience afforded to students by the installation will only be available if students and faculty alike cooperate in obeying the directions of the signals."

The signals have a total cycle of 70 seconds consisting of "green lights" each way for motor traffic successively for about 18 seconds, followed by 12 seconds of "Walk," and 12 seconds of warning "Don't Walk" blinking signals. During the pedestrian cycles, students will be able to cross the intersection either straight across in the conventional manner or diagonally from corner to corner.

The intersection was part of the traffic control pattern studied by the engineering consultant firm of Cornely, Howland, Huges and Merrifield of Boise. The engineering study was begun after students on various parts of the campus complained of traffic congestion or lack of pedestrian safety.

General Studies given approval

A "General Studies Program" was approved by the University Curriculum Committee at the July 22, 1969 meeting and is now being recommended to the Faculty Council for approval and routing to the Faculty, President, and Regents.

The program is designed to help regularly-admitted students find their proper place in the University's educational structure.

Three classes of students to be served by the program are those who (1) are not able to decide upon which college of the university to enter, or (2) because of environmental disadvantages would not be likely to attempt college without the special counseling provided, or (3) find that they are in the wrong college but are unable to make an official change of curriculum because of a low grade point

Drama Department sets open house

Curtain Club, dramatic's honorary, will host an open house this Friday at 4 p.m. in the U-Hut for all students interested in Idaho drama.

Both majors and non-majors are invited to attend and meet with the faculty and other students. The productions for this season will be discussed, as well as any questions answered.

Help Needed

Positions are still available on the Argonaut! Anyone interested is invited to attend a staff meeting tomorrow at 7 p.m. in the Arg offices.

"Urban Studies" seminar set for seniors and grads this fall

"Urban Studies," a new interdisciplinary seminar, will be available to seniors and graduate students here this semester. Students can enroll in the course numbered 493 under Civil Engineering, Geography, Architecture, Political Science, Business or Sociology.

Dr. Harry Caldwell, Chairman of Geography and coordinator for the course, said several guidelines have been developed for the course including the gravitation of Idaho students to urban and suburban locations, the problems of the small western cities in their attempt to meet the needs of the 1970's and the role of the university, its staff and student body in helping solve urban problems.

members from other departments are requested to participate in the open-ended type of program.

"To maximize student-faculty interaction, an attempt will be made to keep the group to a maximum of 25 students," Caldwell said. Students planning to enroll in the course should contact a member of the steering committee.

The course will meet Monday nights from 7-9 p.m. in Education 310. Caldwell said that the course is being offered first semester only with plans to offer the same course first semester of next year.

The steering committee plans to work with the Public Affairs Committee to bring authorities on urban problems to the campus November 13-14. Among speakers expected at that time are Robert Weaver, former head of Federal Housing and Urban Development, and other members of the Council on Urban Affairs, Caldwell said.

Black studies course set

The problems of the black man will be the basis for a new course to be taught by a rotating faculty at the University of Idaho this semester, according to Dr. Siegfried R. Rolland, professor of social sciences.

The course, "Social Science 103 — Black Identity: Alienation and Affirmation," is "being introduced as an experiment in response to needs expressed by students, faculty members and laymen," Rolland said.

"We hope to learn more about what is needed in the black studies area with this first semester of experimentation and then build on this foundation," Rolland said.

Jack L. Davis, Asst. Professor of

Approval was given for the university to rent housing to up to 150 Washington State University students if an anticipated overflow develops at the neighboring institution. The students would be housed in Forney and Hays halls. The two structures, built in the Twenties, were taken out of use this fall for renovating. The buildings would be used by the WSU students for a maximum of one semester.

English, will direct the cooperating faculty.

Hoene, Doi resign from E Board, new members considered

Bill Hoene and Pam Doi, recently elected members of E Board, have submitted letters of resignation, according to ASUI president Jim Willms. Neither Hoene or Doi were available for comment as to why they were resigning.

As provided in the ASUI constitution, new selections will be made from candidates who lacked a majority in last spring's election, according to Willms.

Official appointments will be made at the first E Board meeting scheduled for September 16. Don Miller, present Attorney General, will resign his post to replace Hoene. The appointment of a replacement for Doi will be made from either Rick Ritter or Randy Luce.

Scott Cunningham, who had first priority for Doi's place, chooses to remain a legislative assistant.

Executive Board is the student legislative body established for the organized conduct of student affairs at the

Editorial Opinion

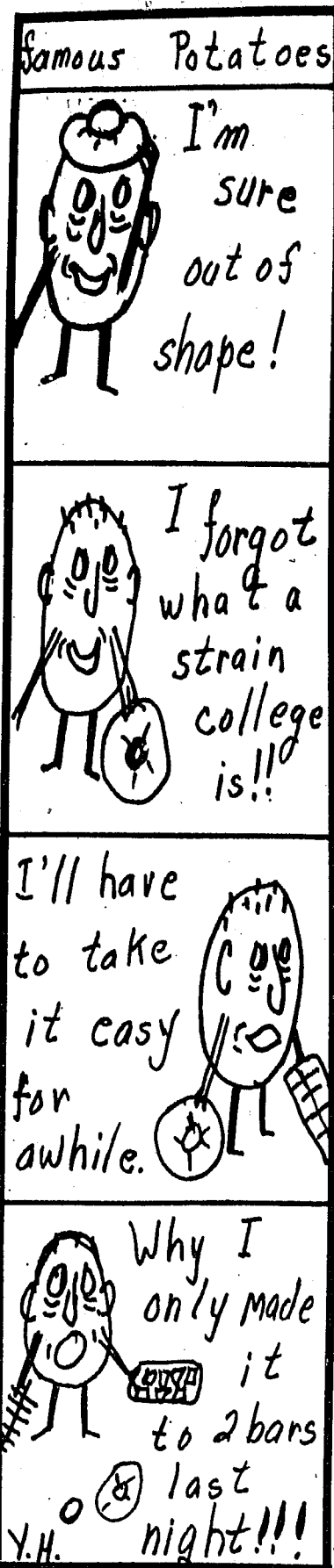
Children

In the last year the students at the University of Idaho have made great strides toward freeing themselves from the bondage of "In Loco Parentis." To obtain this freedom they have maintained that they are mature adults and quite capable of living their own lives without help of the great father on the Hill.

One group of students seems bent on destroying the reputation of students as mature and responsible adults. These children are also known as Greeks.

Last week was Rush Week, but it might as well have been called Hell Week. It seemed as though nearly everyone with a Greek pin on also had in his possession a permit to raise hell. Drunken and rowdy pledges who were staying at the Complex took the liberty of breaking windows and playing with the fire alarms like sixth graders. One group of over-zealous fraternity men tore the door off a sorority house and broke windows in their haste to get in. The SUB was inundated with girls screaming their house songs at the top of their lungs with total disregard for other students that were using it.

On the surface the fraternity system seems to be a good idea. It gives people a chance to develop a close working relationship while living together on a day to day basis. The problem comes when these people succumb to mob psychology and forget that their actions also affect others. I.



Letters

Writer states feelings

To the Editor:

There seems to be some doubt in the minds of many Americans as to the patriotism of our young people. This is a serious indictment and unfounded. The faults in our society are many. Some came about due to a blind patriotism of a generation that were taught as all are, the difference between right and wrong. Hence, my country right or wrong I will follow blindly, is somewhat hollow. Your country and mine is involved in a military confrontation in Vietnam because of a commitment. (Political.) Many thousands have died, many more maimed for life in fulfilling this commitment. I say it's fulfilled, and the time has come to manifest patriotism as you the young men and women see and feel it. After graduation when the umbilical is really severed and the responsibilities of a society are your inheritance it will be your nation to preserve. The often mentioned generation gap is a myth. Political crap.

This is what you can do as students, individually or in groups (non-violent.) Boycott all athletic events, above the high school level excluding intramural events confined to the personnel of your university. Suggest to your parents and relatives to refrain from the attendance of professional athletic events in their area. Do this with the aid of such allies as the Women for Peace, etc. Help your country now and continue the pressure until the effort bears fruit. Soon this nation will be your estate, free or enslaved. Again I say our commitment in Vietnam has been fulfilled.

Sincerely yours,
Edwin D. Wolf
457 Hermitage Drive
Deerfield, Illinois



The Idaho Argonaut

The Idaho Argonaut is published by the Associated Students of the University of Idaho twice weekly, on Tuesday and Friday, throughout the school year. Offices of the Argonaut are located in the basement of the Student Union Building on the Idaho campus. Office hours are from noon to midnight on Mondays and Thursdays. Messages and letters to the editor may be left in the Argonaut mailbox in the SUB general office 8 a.m. to 5 p.m. Monday through Friday. Letters to the editor will be accepted for publication provided they are properly submitted before 5 p.m. of the day preceding publication. All letters must be typewritten and are limited to a maximum length of 150 words. Letters to the editor must be signed and the author's name and address must appear legibly. The author's name will be withheld from publication on request. Advertising material and classified advertisements must be submitted to the Advertising Manager by noon on Friday for Monday's paper and on Wednesday for Friday's paper. Advertising rates available on request.

Editor
Assoc. Editor
Managing Editor
News Editor
Wire Editor
Social Editor
Political Editor
Sports Editor
Advertising Manager

Ira Eick
Kerrie Quinn
Carolyn Cron
Brian Lobdell
Jim McFarland
Laura Lorton
Bruce Berg
Dave Finkelnberg
Bob Taber

Changes in schedule posted

1. Add Management - B.S. (Bus.) to the list of undergraduate majors and programs offered on page 35. This major was omitted by error.
2. Correct Hon 301g-302g to read Drama, instead of "Dramatics." (This same change applies also to Hon 401g-402g.)
3. Correct HEC 271 to show the class meeting as two lec and one 3-hr lab per wk, instead of "two lec and two 2-hr labs per wk."
4. For the first semester 1969-70 only, reinstate former Math E and renumber this course Math 95.
5. Reinstate former Math R67 and renumber this course as Math R105.
6. Add the following courses for the NRTS Education program:
Bus R215 Government Contract Negotiation (3 cr) F or S
Prime contract and subcontract negotiation; emphasis on management rather than legal considerations.
Phys R517 Radiation Dosimetry Instrumentation (3 Cr) F or S
Radiation detection methods, statistics, instrumentation and dose determination; emphasis on radiation protection.
Phys R518 Radiation Biology (3 cr) F or S
Mechanisms and patterns of energy deposition by ionizing radiation in biological systems.
Phys R519 Radiation Physiology (3 cr) F or S
Selected topics from human physiology and methods of internal dosimetry. Prereq: radiation biology and calculus.
7. Correct page 33 by adding the Bachelor of Science in Geological Engineering (B.S. Geol.E.) to the list of baccalaureate degrees granted by the College of Mines.
8. Correct credits in Law 530 to show 4 credits instead of 3.
9. On page 36, correct the graduate major in "interior architecture and decorating" to read interior design.
10. On page 121, in the paragraph headed "Master of Agriculture, Master of Forestry, Master of Natural Science," correct the beginning of the second sentence to read: "A maximum of two credits in approved 400's courses..."
11. On page 71, correct the sophomore year of the mechanical engineering curriculum to read as follows:

Sophomore Year Course	Credits
Phys 211-212 Engineering Physics II-III	1st 2nd
ES 210, 220 Mechanics I-II	3 3
Math 200 Anal Geom & Calculus III	2 2
Math 310 Ord Diff Equations	3 -
PE 233 Sophomore Physical Education	1 1
Econ 251 Principles of Economics	3 3
Elective, Humanistic-Social	3 -
Elective, Composition	3 -
EE 200 Systems & Circuits	1 1
ME 253-254 Mat Process Lab I-II	2 -
Met 201 Elem Materials Sc	2 -
ME 261 Engineering Materials	2 -
	17 1/2 17 1/2

12. Correct the paragraph headed "Preparation of Study Plan," on pp. 124-125," by restoring a line of type dropped in the paging process. The complete paragraph should read as follows

Preparation of Study Plan. As soon as practical after approval of notice of intention and appointment of supervisory committee, the student and major professor prepare a study plan, on forms provided, which are approved by his supervisory committee and dean of the Graduate School. Changes deemed desirable at a latter date may be made by memorandum with similar approvals. The doctoral program is expected to contain breadth as well as depth. The research topic is stated, at least generally, on the study plan. The final awarding of the degree is based upon completion of all items required by the study plan. The plan should, therefore, be the result of detailed and careful consideration of objectives rather than unrelated listing of courses. Excessive course requirements should be avoided.

Registration

Tuesday, Sept. 9

- 8:00 to 8:30 a.m.—Early Permits
- 8:30 to 9:00 a.m.—Be to Br
- 9:00 to 9:30 a.m.—Br to Car
- 9:30 to 10:00 a.m.—Car to Cor
- 10:00 to 10:30 a.m.—Cor to Di
- 10:30 to 11:00 a.m.—Di to Fa
- 11:00 to 11:15 a.m.—Fa to Fo
- Gym doors close at 11:15 a.m.

- 1:00 to 1:30 p.m.—Fo to Go
- 1:30 to 2:00 p.m.—Go to Har
- 2:00 to 2:30 p.m.—Har to Ho
- 2:30 to 3:00 p.m.—Ho to Jam
- 3:00 to 3:30 p.m.—Jam to Ke
- 3:30 to 4:00 p.m.—Ke to La
- 4:00 to 4:30 p.m.—La to Lu
- Gym doors close at 4:30 p.m.

Wednesday, Sept. 10

- 8:00 to 8:30 a.m.—Lu to McF
- 8:30 to 9:00 a.m.—McF to Mor
- 9:00 to 9:30 a.m.—Mor to Nu
- 9:30 to 10:00 a.m.—Nu to Pi
- 10:00 to 10:30 a.m.—Pi to Ri
- 10:30 to 11:00 a.m.—Ri to Sco
- 11:00 to 11:15 a.m.—Sco to Si
- Gym doors close at 11:15 a.m.

- 1:00 to 1:30 p.m.—Si to Sti
- 1:30 to 2:00 p.m.—Sti to Thr
- 2:00 to 2:30 p.m.—Thr to Wa
- 2:30 to 3:00 p.m.—Wa to Wil
- 3:00 to 3:30 p.m.—Wil to Ab
- 3:30 to 4:00 p.m.—Ab to Bal
- 4:00 to 4:30 p.m.—Bal to Be
- Gym doors close at 4:30 p.m.



A GET-ACQUAINTED PICNIC sponsored by the Residence Hall Association was held Sunday in the Arboretum. Students from dormitories met under the trees for their first taste of cafeteria dinner cooking for the fall semester.

Idaho technicians receive payment in Zambian money

The University of Idaho is paying three of its staff members in kwachas and ngwees — Zambian currency. The Regents, meeting in Boise approved the special currency payments to comply with the laws of the Republic of Zambia (formerly Northern Rhodesia). The three technicians are doing fisheries research in Zambia under the supervision of Dr. Don W. Chapman of the university's College of Forestry, Wildlife and Range Sciences. The technicians are Richard Scully, Lewiston; William Miller, Sioux City, Iowa, and Richard Dudley, Mamaroneck, N.Y. Their work is being financed by a \$58,985 federal grant.

GI's given outline on securing checks for fall semester

Campus GI's have been given an outline for securing education checks on time this fall by the Veteran's Administration. According to the VA, veterans should have returned their Certification of Attendance for the spring and summer semester at the end of the term. In order to continue to receive payments on time, said VA sources, college registrars this fall should return their new fall enrollment certification. According to the VA, veterans who are enrolling for the first time this fall or who have changed colleges or programs, must be certain they have obtained a proper Certificate of Eligibility from the VA. This certificate should be submitted to the college registrar. The registrar must then return the completed certificate to the VA.



SUSAN SMITH

U of I coed joins Campus Afloat for fall semester

Susan Smith, an English major from Long Beach, Calif. has been admitted to the World Campus Afloat program of Chapman College for the fall semester at sea this year. Miss Smith will join 500 other college students representing 200 colleges and universities in nearly all the 50 states on Oct. 9 to board the S.S. RYNDAM in New York harbor for the study-voyage to ports in western Europe, the Mediterranean and South America. Students carry a regular semester's units on the shipboard campus. They attend classes six days a week at sea on the vessel which is equipped with classrooms, laboratories, library, art studio and student union. A shore the academic program continues with pre-arranged lectures, seminars and field trips directly related to course work. Overnight homestays with families are arranged, as are social events with local university students. Now in its fifth year, World Campus Afloat is administered by Chapman College, located in Orange, California, near Los Angeles.

Department of Music provides many careers and participation in musical groups to students

The University of Idaho Music Department offers training for students interested in careers in music or music education. However, it also provides an opportunity for the general student of the university to broaden his musical horizons through participation in various groups.

The university has seven musical organizations which a student may join. These include the Vandaleers Concert Choir, University Symphony Orchestra, Opera Workshop, University Singers, and the Marching, Concert and Wind Ensemble Bands.

The University of Idaho Concert Choir, informally known as the Vandaleers, is made up of selected students from all departments of the University. Directed by Professor Glen R. Lockery, the Vandaleers have long been considered in northwestern music circles as one of the leading college choral groups in this region.

Its principle activities include the presentation of two major concerts on the campus each year, and an annual tour of the state of Idaho. Best known of its local appearances is the annual Christmas Candlelight Concert which brings a capacity audience of both students and townspeople to hear traditional and modern choral music devoted to the theme of Christmas.

The choir meets daily at 3:00 p.m. in room 216, music building. Membership is open to all students regularly enrolled in the university, subject to permission of the conductor.

The University Symphony, directed by LeRoy Bauer, is well known for the high quality of programs presented each year.

The annual fall concert features soloists, including members of the music faculty as well as internationally known artists. The traditional Senior Soloists concert, presented each May, has become one of the musical highlights of the year on campus. In this concert, talented senior music students perform as soloists with the Symphony.

In recent years, the orchestra has joined with the drama department and opera workshop to present such shows as "Oklahoma," "The King and I" and "The Bartered Bride."

A smaller version of the University Symphony is the Idaho Symphonette. This group, known as the university's touring orchestra, completed its first tour of southern Idaho last year.

Membership in the University Symphony is open to any interested student. Tryouts are held for the general student body, and university credit is granted for participation.

Opera Workshop, known as Music 68-168, is open to anyone in the University upon audition with the director, Charles W. Walton.

In the past four years, the workshop has joined with the Drama Department to present "Oklahoma," "The King and I," and "The Bartered Bride." This coming year, these departments will present "Carousel."

Also during the fall semester, the Opera Workshop will tour northern Idaho with a

program of scenes for high schools, combine with the Drama Department in presentation of "The Telephone" on a tour of southeastern Idaho, and perform a chamber opera at the university.

The Opera Workshop has openings for many singing-actors, and anyone interested in joining this group should contact Charles Walton.

The University Singers, directed by Norman Logan, is the largest musical group on campus. Averaging more than 200 singers per semester, membership is open to anyone with permission of the conductor. The main qualification is a vital interest in choral singing.

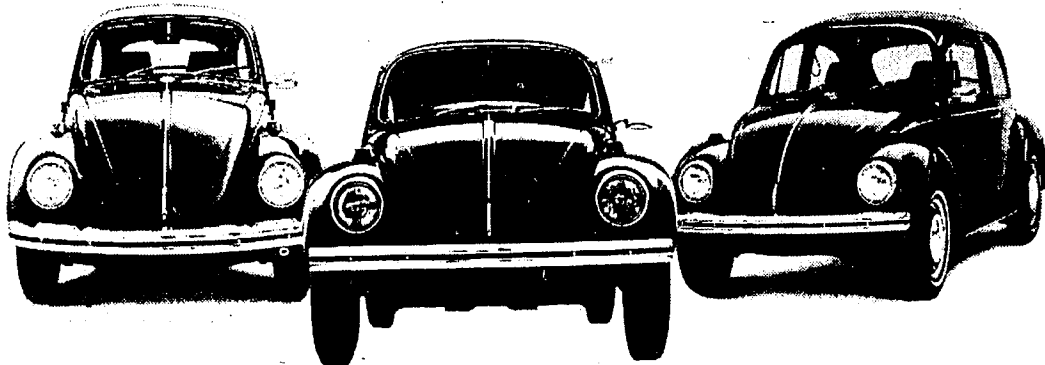
Each year, the singers present two concerts. Music performed ranges from major choral works to the latest contemporary music.

In its concert this past spring, the group presented such songs as "Hope for Freedom" by Jean Berger and Martin Luther King; and "Consider Yourself" from the Broadway musical "Oliver."

Probably the best known of the Idaho band organizations is the Vandal Marching Band. Directed by Robert Spevacek, this 142-instrumental band, combined with the 64-girl Vandalette Drill Team, has achieved a reputation of excellence among marching bands of the Pacific Northwest.

Currently plans are underway to further enhance the appeal of this organization with addition of a 16-girl flag squad — an innovation in such bands.

LEASE ME



LOW COST, DEPENDABLE TRANSPORTATION WHILE ATTENDING COLLEGE

WHY LEASE?

- I. No money invested in an automobile.
- II. Minimum maintenance costs in owning a new Volkswagen.
- III. Minimum gasoline and operating costs with a new Volkswagen.
- IV. Minimum insurance costs on a new Volkswagen.
- V. Lease may be terminated at the end of any year, at no penalty.
- VII. Lease rate reduces each year—costs you less the longer you own it.
- VIII. Your car will be serviced by the company that leases you the car—assuring you the best quality care.

ABOUT THE AGENCY UNIVERSITY VOLKSWAGEN IS

an authorized Volkswagen dealership for the Moscow, Idaho, Pullman, Washington area. A full stock of genuine parts is maintained and a staff of factory trained service technicians are employed to properly serve you. The dealership is owned and managed by Dick Fahrenwald, who has been in the automobile business since 1953, and enjoys a reputation for honest service.

\$49⁰⁰
A MONTH AVERAGE LEASE PAYMENT (Four Year Lease)

ABOUT THE PLAN

This is a special lease plan created by Fahrenwald to meet the needs of students at the University of Idaho, and Washington State University. You can start it in any of your four years, and may terminate it after any 12 month term. The lease rate decreases annually so that the lessee will want to renew it and give the car better care and treatment. A Volkswagen is the least expensive new car to purchase and operate. However, you have a choice of other foreign and domestic cars to lease. YOU DON'T COMMIT YOURSELF FOR ANY MORE THAN ONE YEAR AT A TIME!

FILL OUT AND MAIL:

I am interested in the lease, please answer the following questions for me:

1.
2.
3.

II. I want to lease a new VW sedan for 1 year on your plan PLEASE RESERVE A CAR FOR ME.

COLOR DATE

I enclose a check for one month's lease payment as a deposit on the lease.

STUDENT NAME

ADDRESS

CITY

PHONE

If under 21, please give parent or guardian:

NAME

ADDRESS

CITY

TELEPHONE

Plan to attend

<input type="checkbox"/> University of Idaho	<input type="checkbox"/> Sophomore
<input type="checkbox"/> Washington State University	<input type="checkbox"/> Junior
will be a	<input type="checkbox"/> Senior
<input type="checkbox"/> Freshman	<input type="checkbox"/> Graduate Student

your major

I have established credit with

I understand that if under age my parent or guardian will sign the lease with me.

Student Signature

Parent or Guardian Signature

UNIVERSITY VOLKSWAGEN
P. O. BOX 22—MOSCOW, IDAHO, 83843

Guess Who Didn't Take ARMY ROTC



For Information About Enrolling in the Army ROTC Program Visit Room 101 Memorial Gym

UNIVERSITY VOLKSWAGEN MOSCOW
619 S. WASHINGTON 882-5501

492 pledge houses at close of rush

Fraternity and sorority rush, which was conducted on the Idaho campus during the two weeks prior to registration, came to a close last Friday as 492 rushees were pledged into the nine sororities and 18 fraternities active on the campus. A total of 201 girls were taken by the

sororities, as women's rush ended with its annual squeal day on Friday. Men's rush finished at 9 p.m. Friday, and it was the girls turn to watch as the fraternities held their own version of squeal day. Listed below are the new pledges.

Alpha Kappa Lambda

Jim David, Terry Beamish, Jeff Ankney, Martin Olson, Steve Burlison, Steve Schwane, and Ed Tipler.

Alpha Tau Omega

Dan Carrico, Dean Horning, John Evans, Greg Evans, Gunner Harris, Dan Stephens, Steven Johnson, William Gee, Dan Woodworth, Larry Kelson, Eric Truesdell, Terry Brown, Fred Ostermeyer, Todd Edmunds, J. Merton Mount, Bob Schleiffarth, David Clark.

Beta Theta Pi

Tom McGinnis, Gary Huntsman, Larry Crockett, Kent Sakaguchi, Roger Matheny, John R. Comstock, Tom Brandt, Mike McEntee, John Burlison, Tom McKeivitt, Doug Formo, Trey Knipe, Alan King, W. Denton Sidaway, Tim Colner, Kim Kirkland, Mickey L. Meyer, Richard Dahl, Marc Howard, Joe Corlett, Lance Salladay, John C. Lodge.

Delta Chi

Chris Wolf, Neil Stevens, Terry Dokken, Bill Betty, Duane Abromeit, Steve Kent, Harry Knox, Brad Youngman, Bruce Polteuin, Ken Sechler, Mark Denton, Ron Myklebust, Steve Inge, Dennis Davis, John Thomas, Garth Heidel, Sid Strakal, Tim Gridley.

Delta Sigma Phi

Hal Fitch, Ralph Cote, Robert Kaschmitter, Lynn Dowty, Robert Rimaldi, Rick Royer, Ted Taylor, Dan Rich, Jeff Greene, John Wolf, Frank Olander, Pat Sullivan, Mark Ipsen.

Delta Tau Delta

John Chapman, Jim Irons, Ben Julet, Mike Gates, Larry Larson, Bob Neidner, Kelly Stevenson, Dan Cummins, Howard Short, Carm Walgamott, Mike Bayless, Rob Wolf, Rod Bateman.

Farmhouse

Bill Canine, Gaylen Colter, Allen Heimgartner, George Kurdy, Ted Lund, Dale Peck, Bruce Walker, Wes Wilhite and Dave Wittman.

Kappa Sigma

John Rolfe, Doug Hayman, Mike McQuary, Jeff Fee, Terry Schuldt, Pete Fasero, Bob Peterson, Don Baker, Wynn Lemmon, Ted Pierce, John Donat, Rick Glaub, Mark Wood. Rich Wilkinson, Tom Barnes, Marvin Coleman, Rick Kennedy, Doug Cameron, Gary Nelson, Chris Mikkelsen, Ron Thompson, Tim Cameron, Randy Sayer, Ray Granlund and Bruce Burde.

Lambda Chi Alpha

Steve Gilbert, Greg Piller, Bob Eier, Rand Mas teller, Mike Bingham, John Langdon, Charles Kator, Fred Hendrickson, Dean Lindstrom, Dennis Stettler, Tim O'Conner and Bill Tregoning.

Phi Delta Theta

Steve Martin, Gaylord Newby, Gary Paterson, Rodger Robertson, Tim Donnelly, Tom Linville, Jon Watson, Bill Coles, Nick Burggraf, Rich Schnebly, John Anderson, Bruce Horkley. Arlin Olson, Dave Freeman, Terry Cravens, Dave Brown, Mark Graham, Francis Denevan, Guy Ailor, Frank Sommer, Dennis Parker, Larry Gwartney and Steve Fels.

Phi Kappa Tau

Greek Taylor, Ralph Perkins, Jim Bartenhagen, Steve Delis, Steve Bellem, Lloyd McClintick, Jerry Cannaday and Jim Parson.

Phi Gamma Delta

Diane King, Vicki Kutil, Susan Larson, Terri Lauterback, Helen Linhart, Laurel McCullough, Nancy Mauk, Nancy Moore, Darlene Peterson, Nancy Richman, Marcia Sodorff and Betsy Thode.

Pi Kappa Alpha

Joe Chester, Nathan B. Smith, James W. Rich, Mark Tiddens, Steve Barnes, Denny Truesdale, John Wilkin, Julius Carstensen, Lynn Tanner, Ken Bischoff, Brad Langager, John Grice, Gary Riggs, Mike Chase, Dick Rynearson, Jim Parish and Rick Renfrow.

Sigma Alpha Epsilon

Craig Olson, Terrell Huddleston, Dale Munk, Julian Howard, Jim Fursman, Rod Bulcher, Steve McCoy, Bruce Burk, Dave Thomas, Mike Newell, Lon Stokes, Chris Oakley. Gary Machacek, Dennis Saijo, Lew Veal, John Hall, Jack C. Kosanke, Bruce Rieman, Ron Turner, Lance Von Marbod, Vic Stone, Tom Hill and Kim Herzinger.

Sigma Chi

Bob Bates, Bob Paul, Greg Tallant, Ben Christensen, Dan Potucek, Tom Vanderford, James Asher, Steve Klappenback, Steve Murphy, Bill Eason, Steven Strait, Quinton Snooks, Bob Kambitsch, Phil Osmond, Tim Nadauld, Alan Byers, Jim Barrott and Rod McCall.

Sigma Nu

Jim Stark, Scott Tunnell, Kevin McCoy, Bill Neumayer, Bob Lee, Cary Walgamott, Jim Lane, Steve Hopkins, Don Harris, Ken Hawley, Mike McLaughlin, Jim Scharnborst. Inaky Urza, Spencer Hampton, Doug Springer, Rick Fleischman, Bill Spofford, Terry McDaniel, John Denler, Brad Bower, Ed Christian, Dave Blodgett, Rich McKinley and Pat Hatfield.

Tau Kappa Epsilon

Carl Feldhusen, Greg Wilson, Gary Clampitt, Jim Wood, Mike Makin, Brad McDonald, Seve Johnson, Dwight Leslie, Doug Renfrow, John Baer, Scott Standley, Mike Bradburn, Jere Schulte, Bill Crawford, Mike Smith and Skip Rowland.

Theta Chi

Larry Laussen, Dave McGrath, Jeff Garatea, Mark Jordan, Ray Delay, Jim Thorpe, Daryl Powaukce and Fred Stoll.



Alpha Chi Omega

Janice Baer, Ellen Bailey, Shannon Beglan, Barbara Benjamin, Kathleen Bruce, Cynthia Butts, Della Cornish, Diane Dishman, Nancy Duffin, Molly Eddy, Penelope Graham, Christine Harding, Nancy Henry, Constance Hicks, Vicki James. Diane King, Vicki Kutil, Susan Larson, Terri Lauterback, Helen Linhart, Laurel McCullough, Nancy Mauk, Nancy Moore, Darlene Peterson, Nancy Richman, Marcia Sodorff and Betsy Thode.

Alpha Gamma Delta

Sally Adams, Patricia Andrews, Gayle Babinski, Donna Barker, Dianna Burns, Judith Coker, Linda Ferguson, Gretchen Hagen, Frances Hauser, Janice Herzog, Marsha Johnson, Kathy Kamkeberg, Pam Maisch, Nancy Kay Olson, Katherine Richardson, Mary Schorran, Marjorie Smith, Lois Strauchon, Lynne Turnbull and Janice Zink.

Alpha Phi

Donna Bankhead, Linda Becker, Marta Bennett, Judith Benson, Marilyn Cegnar, Susan Chadez, Linda Conan, Bobbi Downend, Paula Farthing, Kris Frandsen, Maureen McEachern. Kathleen Miller, Janet Robbins, Crystal Skelton, Carolyn Smith, Kris Stark, Marcia Stearns, Billie Stevens, Pat True, Becki Williams and Denise Williams.

Delta Delta Delta

Suzanne Bobbitt, Bonnie Dobson, Kathryn Enlow, Christine Faux, Carol Gipson, Anne Godwin, Nancy Goodloe, Maria Hartman, Mary Kay Holden, Karen Jackson, Linda Jones. Kristy Karn, Judith Loeffler, Linda Maag, Lunn Neumann, Karen Nichols, Patricia Olin, Janet Peterson, Debra Redmond, Sandra Wakagawa and Elizabeth Wallin.

Delta Gamma

Kathy Aiken, Deborah Anderson, Elaine Ambrose, Deborah Bonin, Wendi Brown, Becky Carter, Kitty Denman, Laurie Drumheller, Kathleen Dwyer, Donna George, Deborah Hagler, Kathleen Lincoln. Jennifer Mattern, Lilah Mulder, Julie Norberg, Willa Pace, Alice Pinch, Susan Quackenbush, Guenn Richardson, Linda Shreve, Debbie Snuffer, Nancy Vasser and Deborah Watkins.

Gamma Phi Beta

Beverly Brewer, Stella Byrd, Carol Colquhoun, Christine Feeny, Maria Finlay, Penny Goodman, Andrea Keller, Amy La Marche, Lynette LaMarche, Margaret Mack, Debbie Meyer. Nancy Ostroot Marcia Powell, Joan Roberts, Leslie Robson, Jane Sahlberg, Pam Smith, Debra Telford, Kali Voyce, Ann Woodruff and Kathy Zimmer.

Regents approve profs, instructors

Many new instructors and assistant professors along with the reappointment of Melbourne L. Jackson, dean of the Graduate School, were approved by the Idaho State Board of Regents in Boise last week President Ernest W. Hartung said Monday.

Dr. Melbourne L. Jackson, who asked to be relieved of his duties as dean of the Graduate School so he could devote full time to research and teaching, has agreed to continue in the deanship until a successor is appointed, President Ernest W. Hartung said today.

Approval of Jackson's reappointment was given by the Regents at their Boise meeting this week. While supervising the graduate program, Jackson will devote part time to chemical engineering research.

New appointments approved by the Regents included:

Professor of naval science — Captain Jack R. Voorhees, who is a University of Washington graduate with a master degree from George Washington University, and has been on the faculty of the National War College, Washington, D.C.

Assistant professor of education — Terry Armstrong, graduate of Southern Mississippi University, who has a master's degree from the University of Idaho, and has taught in Salmon, Boise and Caldwell school systems.

Assistant professor and post doctoral fellow in chemistry — Daniel P. Babb, who has taught at Kearney State College in Nebraska and the University of Gottingen, Germany.

Assistant professor of military science — Captain Harold I. Bell, Stanford University graduate, who has taught at the U.S. Army Infantry School, Ft. Benning, Ga.

Assistant professor of art — Nelson S. Curtis, graduate of Memphis Academy of Fine Arts, Tenn., who has his master's degree from the University of Idaho.

Visiting assistant professor of geology and geography — Justin C. Friberg, University of Idaho graduate with a master degree from the University of Nebraska. He has been teaching at Syracuse University, New York.

Assistant professor of music — Jerry W. Harris, who has bachelor and master degrees in music education from Lewis and Clark College, Portland, and his doctorate from the University of Oregon. He has been music consultant for the Oregon State Department of Education, and is a musical conductor, violinist, and orchestra conductor.

Assistant professor of music — W. Howard Jones, who holds bachelor and master degrees from the University of Oregon, and who, as a cellist, has toured with Henry Mancini, Robert Shaw and Glen Campbell. He has played nine seasons with the Oregon Symphony Orchestra, Portland.

Assistant professor of bacteriology — Al J. Ling, holding three degrees from Kansas State University.

Assistant professor of electrical engineering — Gary K. Maki, who is a graduate of Michigan Technological University at Houghton, and holds master and Ph. D. degrees from the University of Missouri.

Assistant professor of accounting — Earl Monical, Jr., who has B.S. and M.S. degrees from the University of Southern California, and has done his doctoral studies at the University of Southern California and Central Michigan University, Mt. Pleasant.

Assistant professor of special education — George T. Amerson, who is a graduate of Arizona State College, and has a master degree from the University of Oregon, where he has been completing his doctoral studies.

Assistant professor of electrical engineering — David E. Olson, who is a graduate of Michigan Technological University and holds a doctorate degree from the University of Utah.

Instructor of Art — George T. Wray, who is a graduate of Moorhead State College, Minn., and has a master of fine arts degree from the California College of Arts and Crafts.

Extension home economics agent for Cwyhee county — Beverly Ann Hansten, graduate of Idaho State University.

Extension home economics agent for Gooding county — Dorothy K. Grieve, graduate of the University of Idaho.

Instructor in French — Alan Rose, graduate of the University of the South, Sewanee, Tenn., who has been working on his doctorate at the University of Lancaster, England.

Area student teaching supervisor instructor at Lewiston — Mark L. Freer, graduate of the University of Miami with a master of education degree from the University of Idaho.

Student loans

Sherman Carter, University of Idaho financial and administrative vice-president, said Monday students who plan to pay registration fees with federal loans have until Friday afternoon to do so. Carter said students who haven't paid their fees by Friday afternoon will be considered on an individual basis.

Clem Parberry, Intramural Director, has announced a meeting for all people interested in officiating intramural events will be held this Thursday evening at 7 p.m.

The Idaho Marching Band and Vandalettes are looking for new members. Anyone interested in performing in either of these organizations should contact Robert Spevack, Music department.



ARMY ROTC—YES or NO



JOHN MIX, Idaho State Senator and President and General Manager of KRPL Radio Station, says, "Army ROTC taught me leadership techniques and principles that have been invaluable. It prepared me to meet situations in handling personnel and in organizing my time that I find important in carrying out my responsibilities as State Senator and General Manager of a radio station. My active duty service as an officer further prepared me for my chosen career." Senator Mix is a 1956 graduate of the University of Idaho and former president of Phi Delta Theta fraternity. He received a commission through Army ROTC at the University and served two years on active duty as a Field Artillery Officer.

TODAY'S GREATEST WRITER

and only 19¢

The Justrite pen by Eberhard Faber is a great writer. Writes more and writes better, without blotting, smearing or glopping. Because the point is a slick carbide ball.

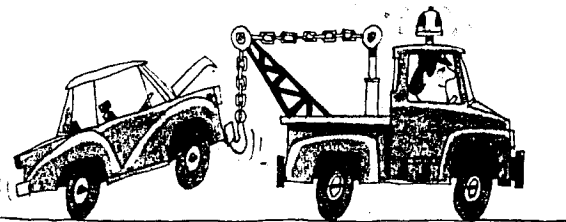
Has many other credentials: See-Thru barrel that reveals everything (like how much ink is left) ... Self-cleaning ink eraser ... Plastic cap that protects the point ... A handy clip. And the Justrite is better-looking, too.

Medium point (illustrated) just 19¢; fine point, 25¢. Four ink colors: Red, Blue, Green, Black. At your college bookstore.

EF EBERHARD FABER

© WILKES BARRE, PA. - NEW YORK - CANADA - GERMANY - VENEZUELA - COLOMBIA

BACK-TO-SCHOOL TUNE-UP SPECIAL



Beat those "won't start" troubles with our Get-Ready-For-Winter



6-CYL. \$6.50 Plus Parts

8-CYL. \$10.50 Plus Parts

NORTH MAIN CONOCO

882-3912

340 N. MAIN

Sports

UNIVERSITY OF IDAHO, MOSCOW, IDAHO



1969 outlook for the air-minded Vandals

Air-minded Idaho faces the 1969 season with one of the country's top passing combinations and, for a big change, more depth than ever before.

Idaho split 10 games in Y C McNease's first season at Idaho, and hopes to improve on that record in 1969. During Idaho's press day last Saturday McNease stated that he feels he has 15 members from his 1968 frosh team who can play this season, and he lost only six seniors from last year, although four of them were starters.

Quarterback Steve Olson and split-end Jerry Hendren are both genuine All-American candidates, as is linebacker Roosevelt Owens. Olson and Hendren finished second in the nation in their specialties last year in NCAA college division statistics, after leading most of the season. Olson passed for 2,591 yards with 183 completions and Hendren caught 88 passes for 1,457 yards and 14 touchdowns. Behind Olson are freshman quarterbacks John Hathaway and Pete Glandeman, who had good spring sessions, and veteran backup quarterback, Mitch Lansdell.

Hathaway has come on strong in practice sessions this fall.

Mike Wiscombe, who saw duty last year as a defensive end, will return to his original running back position, but Jeff Guillory, who missed spring football because of a knee injury, is still a doubtful running back at the other position, at least for the first game.

Punter Ron Davis, as well as Frank Doctor, Jim Wilund, and sometimes defensive player Hank Boomer are all strong contenders for positions as running backs. Boomer had an exceptional day in Saturday's scrimmage despite the fact that he is only a sophomore.

Plunker Jim Wickboldt has hung on to his position, but junior college transfer Mike Sizelove has ousted tight end Mike Dempsey from the first team spot in the pass-receiving corps which has been further boosted by sophomores Jack Goddard and Terry Moreland. Both can play either split end or flanker.

Tight end Gordon DeWaard has been moved to center to back up John Durham. Sophomore Darrel Hanauer gives added depth at that position.

Co-captain Tom Nelson has been starting offensive guard for two seasons and will probably have Jim Wimer for his running mate. Nelson is backed up by Pat Flynn, who saw plenty of action last season and sophomore Rich Kushlan is putting heavy pressure on Wimer for the starting spot at the other guard position.

Bob Haney, a two-year letterman, will return to one tackle position, backed up by Brock Jackley, also a veteran, and sophomores Richard Beaver, Bill Cady and Bruce Langmade are currently battling for the other spot, although Beaver is now hampered by a knee injury sustained in Saturday's scrimmage.

Defensively, the Vandals are primarily returning veterans. Two additions which should bolster the defense are Steve Brown as cornerback, where he has earned a starting berth, and Jesse Craig who is now a starter as left linebacker.

The linebacking ranks are full of sophomores with Bill Bain putting pressure on Craig for a first team spot, and Ron Linehan battling Roosevelt Owens at middle linebacker. Joe Tasby is still hampered by his knee injury and Steve Barker and Jim Boyles, two more sophomores are fighting for his position.

Veteran Wayne Marquess is backed up by Pat Sprute at one corner spot and returnees Bob Juba and Doug Clark hold down the safety positions ahead of Dale Yount and George Smith respectively. John Knowles and Kurt Miller return as defensive ends ahead of sophs Tim Reese, Tom Jarman and Roger Oestmann.

Anchoring the defensive line are veterans Ed Clauson and Tom Carson, but sophomores Andy Kupp and Faustin Riley are capable of filling in here too.

Overall, the Vandals look stronger and deeper, and could surprise many fans with an outstanding record — maybe even the best in Idaho history.

IK Book Sale

The Intercollegiate Knight book sale will be held today through Saturday in the Gold Room of the SUB. The times for the sale will be 9 a.m. to 5 p.m. Books will go on sale Tuesday noon and money or unsold books may be picked up Friday or Saturday until closing.

WANTED



VANDAL "BAD GUY" HATS

Description: Black with Silver Band
Last Seen: Tri-State Distributors
1104 Pullman Rd.
Moscow, Idaho
Vandal Victory
Reward:

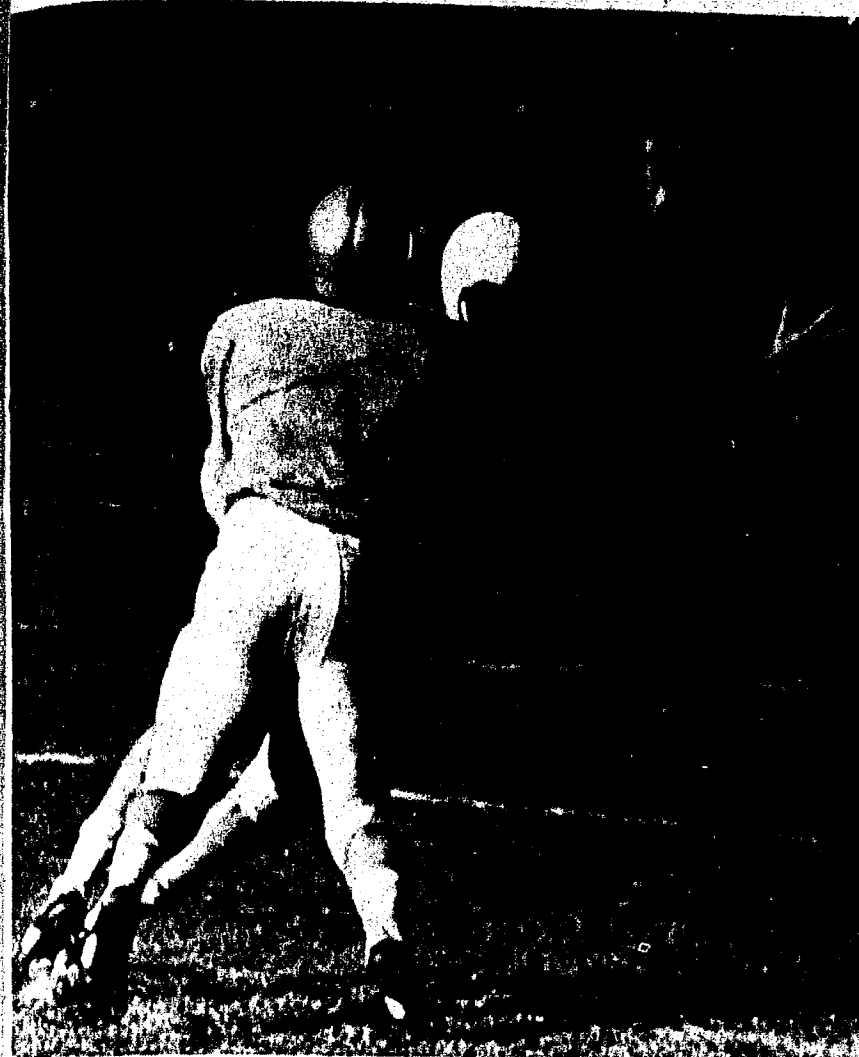
Standley promoted to U-I ticket manager

Mike Standley, former Athletic Department equipment manager, has been promoted to ticket manager for the Vandals. In addition to his duties with ticket sales, Standley is also new Vandal wrestling coach.

Standley came to Idaho last year after spending two years as a teacher-coach at Myrtle Beach in Oregon. A native of Twin Falls, Mike graduated from Idaho State University and received his degree in education before moving to Oregon.

Standley and his wife Suzanne, have a family of two boys.

Both positions were left vacant earlier this year when Ron Stephenson moved up to become Assistant Athletic Director.



First scrimmage of season brings starting team changes

Idaho Vandals hit the gridiron last Saturday in the opening scrimmage of the season between the first team Whites and the second string Blues. Several changes in the starting lineup was the outcome.

Juniors Mike Sizelove, tight end; Jesse Craig, left line backer and Steve Brown, right corner back received the nod for the first team. Sophomores Terry Moreland, a flanker and Ron Linehan, middle line backer also moved up.

Sizelove and Craig are both transfers from junior colleges while Brown is out for his first season having never played football until last spring.

Not pleased with the offense's performance, McNease said that the players might have been a little fatigued after a week of double sessions. He announced that single sessions would begin today with the start of registration, with efforts to start smoothing out the offense as the goal for this week.

The Vandals, who usually operate with a powerful offense, put on a mostly defensive show for the two dozen or so members of the press and some 400 fans, who braved the condemned facilities at Neale Stadium to watch.

The White offense scored three touchdowns and a field goal with one of the tallies being scored on a 45 yard pass interception by Brown. Veteran quarterback, Steve Olson, led the first team Vandals to the first touchdown on the opening series.

The Blue unit, led by sophomore John Hathaway, scored only one touchdown. Hathaway also led the White unit to one of their scores.

Olson, who McNease said after scrimmage, "has really looked good until today," nevertheless completed 17 of 39 passes, counting three pass interference penalties, and one touchdown strike to split end Jerry Hendren.

Hendren showed many of the moves that make him a top All-American candidate, despite being slowed by a knee injury earlier in the week. Hendren was one of three casualties in the two-hour scrimmage, jamming his hand after catching one of his scoring touchdown passes.

Sophomore running back, Frank Doctor, suffered a turned ankle while Dick Beaver, a starting lineman, may be out of action for sometime with a knee injury.

Both the first and second defensive units showed impressive play in the scrimmage.

"A lot of work will be done this week and next to get our offense geared properly to the style we plan to have this

season. I know that the performance of the offense did not show their potential in the scrimmage but you can bet that we will be ready for the opener with Northern Illinois, on Sept. 20," McNease commented.

The starting defensive unit had five sophomores, but this doesn't bother McNease as he said before the scrimmage, "You can win with sophomores, if they are good enough. Look at Ohio State last year."

Ed Knecht returns to U-I to be Vandal Athletic Director

Ed Knecht, a onetime University of Idaho football assistant coach, returned to Moscow July 15 to take over as Athletic Director.

Appointment of Knecht, who for the last four years has been assistant football coach at Oregon State, was announced by Dr. Ernest W. Hartung, university president. In making the announcement Hartung said, "Knecht is familiar with the Idaho athletic scene and should keep the program moving in high gear."

The day before Hartung made the announcement Idaho was reclassified University Division (major college) in football by the National Collegiate Athletic Association after two years in the College Division.

Vandal Assistant

Knecht served as a Vandal football assistant under J. Nell (Skip) Stahley from 1957 to 1960. At that time he left to take a high school coaching job in Defiance, Ohio, then returned to the state in 1962 to become head coach at Boise High School, where his team scored the school's first victory ever over Borah. When Andros moved from Idaho to OSU in 1965, Knecht went to Corvallis as an assistant and remained there until his resignation in May.

Knecht is a native of Toledo, Ohio, a Navy veteran, and 1950 graduate of Toledo. He has done graduate work at the University of Michigan.

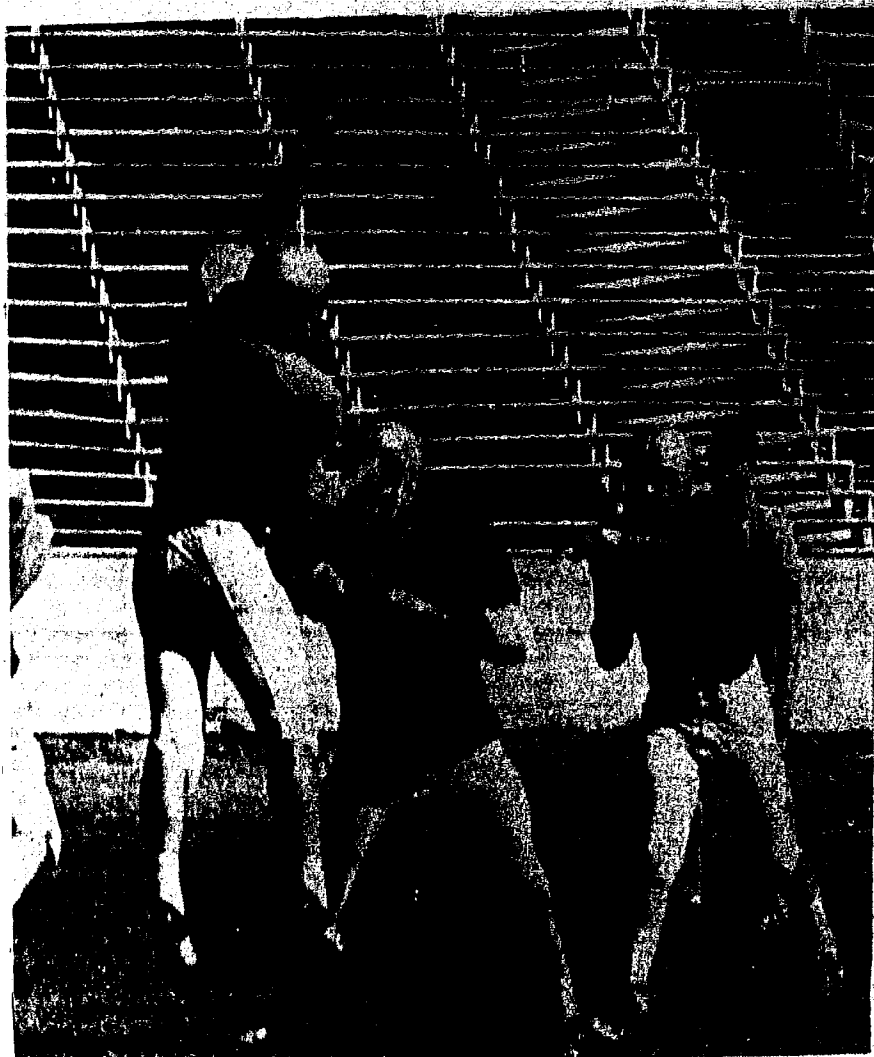


Randall takes over as athletic trainer

Charles F. "Frank" Randall, 34, former head athletic trainer at New Mexico Military Institute, Roswell, has taken over as head athletic trainer at the University of Idaho. He replaces Dennis Channing, who left the university to enter private practice as a physical therapist.

While at New Mexico Military Institute, Randall also served as assistant basketball coach and head baseball coach for the junior college division team and before that was head athletic trainer and assistant baseball coach at New Mexico State. He is a 1962 graduate of New Mexico State.

Anyone interested in working the three home football games at Rogers Field in WSU on Sept. 27, Oct. 25, and Nov. 22 please contact Mike Standley, Athletic Ticket Manager, in the Athletic offices by September 15, 1969.



Sports notes

by Dave Finkelburg

Why Pullman

It's official now — the neighborly spirit it has prevailed for the University of Idaho and Washington State University, cross-state football rivals since 1893. Idaho will play its three 1969 home football games on Washington State's Roger field . . . WHY?

The facts of the case are apparent, — Neale Stadium is falling apart, literally, but the question still remains, why can't the Vandals still find some way to stay on the Idaho campus for those three games.

When the Portland architectural firm of Skidmore, Owings and Merrell started the feasibility study for the athletic complex in mid-July, and discovered the bleachers in Neale Stadium were unsafe, the football season was less than two months away.

Officials at the University have had to figure out a way for the Vandals to play where the fans could watch. The available alternatives were renovating the existing bleachers in Neale Stadium, replacing the bleachers, moving the games elsewhere such as to Spokane, or playing at the opponents home fields.

As new athletic Director Ed Knecht has pointed out, "We didn't want to play all ten games on the road." That alternative seemed least desirable.

Next came the possibility of repairing the Neale Stadium. As Mr. Knecht pointed out yesterday, the University plant is not equipped to do that sort of work on a large scale. "Repairing the stadium would have to be done by letting bids," Knecht explained, "and there just wasn't time for that."

Just as University officials rejected that alternative, they similarly rejected suggestions to play in Spokane, which they feel is too far from the campus and the Vandal fans, or to play in other Idaho cities such as Coeur d'Alene or Lewiston or even at the Moscow Bear's field where press facilities and seating are inadequate for the games. When the possibility of playing in Pullman was

favorably accepted by Washington State University Officials, it seemed to be the best alternative.

Making playing in Pullman more attractive is the fact that rental for the stadium is not "significantly greater" than the present upkeep on Neale Stadium according to Knecht.

While exact figures on the situation are hard to come by, it would apparently cost several times more than the one year's rent to repair the bleachers in Neale Stadium.

"We just don't know," is Dr. Sherman F. Carter's evaluation of when the Vandals will play football in Moscow again. Carter, as well as Knecht and every other official we have talked to are apparently probing all alternatives in order to get football back on campus in the near future.

Ed Knecht has expressed some optimism about the possibility of playing on temporary facilities in Moscow next fall, although as he and Carter quickly point out, everything is up in the air until the results of the Athletic Complex feasibility study come back in November. D.F.

I.M. Managers

There will be an Intramural Managers meeting Wednesday September 10 at 7 p.m. in Room 109 of the Memorial Gymnasium.

Intramural Director Clem Parberry announced that the agenda for the meeting will include drawings for touch football leagues and discussion of entries for golf and tennis.

BLOW YOURSELF UP



Send any black & white or color photo up to 8" x 10" (no negatives) and the name "Swingline" cut from any Swingline stapler or staple refill package to: Poster-Mart, P.O. Box 165, Woodside, N.Y. 11377. Enclose cash, check or money order (no C.O.D.'s) in the amount of \$2.00 for each blow-up; \$4.00 for blow-up and frame as shown. Add sales tax where applicable. Original material returned undamaged. Satisfaction guaranteed. Allow 30 days for delivery.

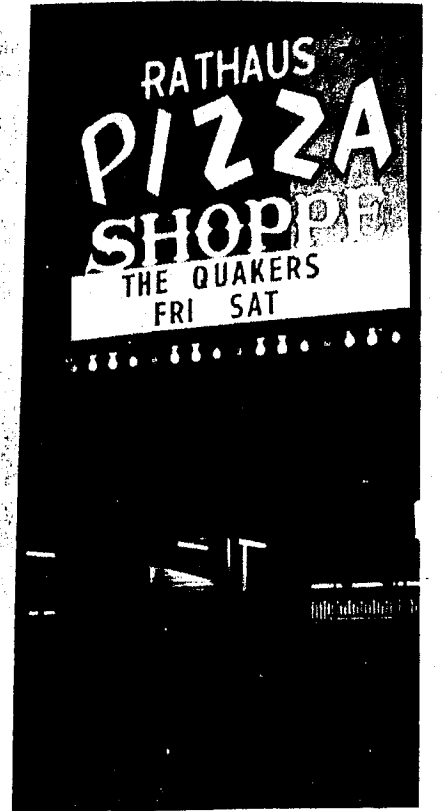
Black and White
2 ft. x 3 ft.
Poster only \$2
(\$4.95 value)
with plastic frame \$4
(\$7.95 value)

THE GREAT SWINGLINE
TOT* STAPLER
The world's largest selling stapler yet no larger than a pack of gum. ONLY 98¢ with 1000 FREE staples!

THE GREAT NEW SWINGLINE
HAND STAPLER Designed to fit the palm. Portable. ONLY \$1.99. With 1000 staples, \$1.99.

THE GREAT SWINGLINE
DESK STAPLER A real heavy-weight with a compact build. ONLY \$1.99. With 1000 staples, \$1.99.

Swingline INC.
32-00 SKILLMAN AVENUE, LONG ISLAND CITY, N.Y. 11101



Many faces of Moscow . . .

