

# Argonaut

Wednesday, Nov. 3, 1976  
Moscow, Idaho 83843  
Vol. 81, No. 20

Jimmy Carter was elected President-elect of the United States last night by a slim margin of popular votes but enough electoral votes to make him the predicted winner by midnight.

With 270 electoral votes needed to win, Carter had gathered enough big states by 11:59 p.m. that United Press International declared him the eventual winner.

The popular vote was running consistently 51 per cent for Carter, 48 per cent for Ford with little fluctuation during the evening.

Because of the closeness of the race, Republicans have moved to impound voting machines in the key state of New York, where electoral votes were seemingly going to Carter. The White House has demanded a recount in that state, hoping to change the outcome in Ford's favor.

Inside Idaho, incumbent Republican Steve Symms was declared the winner in the first congressional district race over challenger Ken Pursley.

Nationally, Carter was able to win over the important electoral vote states of New York, Pennsylvania, and Missouri; the two wire news services gave him 272 electoral votes and declared him the apparent winner with the late-night additions of Hawaii and Missouri.

Until then, television networks had been poised to announce Carter over the top, but all state returns were running too evenly at 49 per cent for each of the two major candidates and it was impossible to declare Carter a clear-cut winner.

Carter is the first Democrat to be elected President-elect in eight years, the 14th president-elect to come from the south.

The former governor/future President told a crowd gathered in Atlanta "If I can tap the greatness that's in you and the American people, we can have a great nation once again."

Democrats were winning big in both houses of Congress, securing 19 of the 33 senate races and leading in two more. In the House, the Democrats have won 219 seats—one more than the number needed for a majority—and they are leading for 58 more.

In the state next door, Democrat Dixy Lee Ray won an unexpected victory for Washington governor over Republican John Spellman. Ray is only the second woman governor who has been elected without following her husband into office.



AP Wirephoto

## Carter Wins!

## NEED A JOB?

OR JUST NEED EXTRA MONEY?

APPLY NOW FOR ELECTION BOARD  
AND HELP DURING ASUI ELECTIONS  
ON NOV. 17, 1976.

CONTACT MIKE CAMPOS  
OR GENE BARTON AT THE ASUI  
OFFICES IN THE SUB OR CALL  
885-6331.

PAY \$2.30 PER HOUR  
POSITIONS LIMITED!  
APPLY PROMPTLY, GET INVOLVED!

## T-HOUSE FORUM

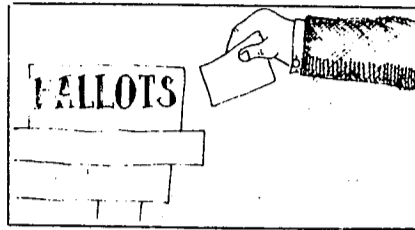
Drug  
Use and  
Abuse:  
**ALCOHOL**

**TONIGHT at 7 pm**

Tonight's T-House Forum discussion will explore the attitudes and atmospheres involved in the ingestion of the #1 drug: Alcohol. T-House Forum is broadcast the first Wednesday of every month at 7:00 pm.

*Kwid Jim*  
91.2

# In this ISSUE...



PAGE THREE

Local elections brought the voters out yesterday. The results begin on page three and jump to page eight.



PAGE FIVE

Rosemary Hammer went to the polls today and caught voters as they completed their ballots. What they felt were the more important local issues and what the main differences were between Carter and Ford are outlined by area voters.



PAGE SIX

Waylon Jennings is coming to Moscow Saturday. David Neiwert gives you some background on his music on the entertainment page.

# Argonaut

Published twice weekly, Tuesdays and Fridays, by the Communications Board, Associated Students of the University of Idaho, Mike Gallagher, chairman. Offices are located in the basement of the Student Union Building, 620 Deakin Ave, Moscow, phone (208) 885-6371. The opinions expressed on the editorial pages of the Argonaut are those of the author solely. Nothing printed in the Argonaut necessarily represents the views of the University of Idaho or its Board of Regents.

### EDITOR

Sue Thomas

### ASSOCIATE EDITOR

Bill Lewis

### COPY EDITORS

Annette Levesque

Kevin McMahan

Andrew Shepard

Jean Nesbitt

### STAFF WRITERS

Pat Erickson

Beth Golf

Jerome Montague

Tim O'Reilly

Lee Pilon

Marc Stallman

Martin Trillhaase

Scott Westwood

Don Williams

### COLUMNIST

Henry Lbert

### FEATURE WRITERS

Rosemary Hammer

Bill Altus

Susan Sample

### ENTERTAINMENT EDITOR

David Neiwert

### SPORTS EDITOR

Craig Carter

### SPORTS WRITERS

Jim Borden

Bill Kirtland

### ADVERTISING MANAGER

Mark Becker

### ADVERTISING SALES

Stacie Dages

Mark James

Lidie Sue Judy

Bill Kirtland

Mike Kossman

Linda Westberg

### BUSINESS MANAGER

Mike Helbing

### CARTOONISTS

Roger Clark

Dan Griffith

Mike Mundt

Jon Pogorelskin

### DESIGN CONSULTANT

Doug Johnston

### CIRCULATION

Mike Tracy

Keith Scheiber

### PHOTOGRAPHERS

Jim Collver

Steve Davis

Steve Fenton

Lenore Garwood

Karl Lindblom

Rick Steiner

### PRODUCTION BUREAU

John Pool, director

Joel Anderson

Holly Brumley

Alberta Carr

Chris Pietsch

Collett Pruitt

Laurel Simos

Sandra Stacki

Denise Ward

Mary Watt

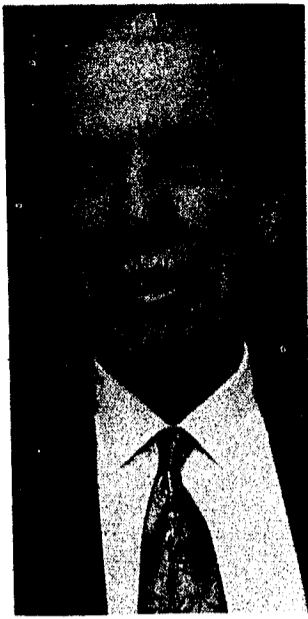
Distributed free of charge to students on campus; mail subscriptions: \$5.00 per semester, \$8.00 per year. Second class postage paid at Moscow, Idaho 83843.



## Argonaut Exclusive



NORMA DOBLER



ROBERT HOSACK



TOM BOYD

## Dobler, Boyd, Hosack to Boise; Morris, Hagen, Goetz elected

A heavy turnout marked Latah County voting yesterday with final results unavailable until 2:30 a.m. this morning due to a computer malfunction.

Two Democratic legislators will be returning to Boise, Norma Dobler in a new position as District 5 State Senator and Bob Hosack will continue as State Representative. Republican Tom Boyd will join them in the other State Representative spot.

Dobler defeated Jerry Snow in an unofficial final tally: 6,647 to 4,107. In a cliff-hanger which wasn't decided until all absentee ballots were returned, Hosack defeated Dr. James Lucas by a margin of 118: 5,261 to 5,143.

"Obviously in a close vote like this, it reinforces the idea that you must represent all the voters and encourages you to represent all the people. A 100 vote margin is enough to keep me humble," Hosack said at Democratic Headquarters last night.

Tom Boyd defeated Democrat David Stowers, 5,376 to 4,821, for State Representative, Position A. Early indications showed the campus vote favored Dobler, Lucas and Boyd.

"I could never have achieved this were it not for the students. I would like to thank the students for supporting me and shall continue to work for them and the University of Idaho," Dobler said after hearing the news of her victory.

A two-term member of the House of Representatives, Dobler supports collective bargaining for state employees, tenant-landlord legislation and reforms of current marijuana laws.

She pledged support for the U of I if elected, working for

increased higher education appropriations, and against a proposal to consolidate all the universities in the state under one chancellor.

She favors some program changes for higher education, however, saying elimination of duplicate and non-essential programs could be carried out by the Board of Regents.

Dobler stressed the need for Democrats in the legislature, who she said, would be more likely to approve measures important to the university community. Conservative Republican influence has kept education appropriations low in past years, Dobler said, and new Democratic leadership in the legislature could change that situation.

Hosack was formerly Chairman of the U of I's political science department, and stressed his support for strong local government in his campaign.

He also voiced support for state employees, higher education and conservation, pointing out high ratings from the Idaho Conservation League.

Free education "through the graduate school level" is one of the Democrat's objectives, with students paying for non-essential services available at state universities.

Pay improvements and added fringe benefits for state employees were achieved during Hosack's first term, he said, adding he would work for similar measures if reelected.

He caused a stir early in the campaign, commenting to a Journalism class on campus that the state should eliminate its marijuana prohibition and allow the drug to be sold like alcohol.

A Genesee farmer and member of that city's school

board, Boyd supported increased education appropriations in his campaign, saying the U of I should be recognized as the primary university in the state because of the quality of the school and the research activities carried on.

He also voiced concern about the tax burden in the state, however, saying he would not support a tax increase for education.

The university should "strengthen existing programs," he said rather than create new ones which require added legislative funding.

Both Boyd and Stowers were against a proposal to consolidate Idaho universities, establishing a Chancellor to oversee higher education in the state. That proposal was introduced, but defeated in this year's legislature.

A member of the Democratic Central Committee and a professor of political science at the university Al Rouyer commented, "I'm disappointed we lost one of the seats in legislative district 5. I think Latah County is a Democratic county but it is a competitive county."

Rouyer continued saying, "It is the most liberal county in Idaho but more conservative than the nation."

ASUI President David Warnick said he was pleased "we have at least one member of the majority caucus." He said that with Jimmy Carter in the White House and a Democratic congress, there will be no excuses.

"For too long we've heard the Democrats blame everything on the Republicans." Now, he said, they won't have a scapegoat.

(Continued on page 8)

### ECKANKAR

The Path of  
Total Awareness

presents a regional seminar:

**'Freedom, Understanding, Love  
...A Way of Life'**

featuring lectures - music - poetry - art

Univ. of Idaho SUB  
Saturday, November 6  
Free Movie 10:00 AM

ECKANKAR® Moscow Satsang  
P. O. Box 8864  
Moscow, ID 83843

## Authentic Mexican Food

sauce seasoned to your taste

### CASA DE ELENA

Now Featuring  
Imported and Domestic Beer

Coen 11 am to 9 pm 112 E. Third Moscow and Lewiston

## TED COWIN

### Photo Supplies:

Film, Flash Cubes, Chemicals, Paper,  
Projector Lamps  
Film Developing and Printing

## Photo Finishing Is Our Business

### WARREN MILLER'S NEW FILM!



## "SKIING ON MY MIND"

BY WARREN MILLER

Feature-length Ski Film

### WSU PAC Theatre

Nov. 17 8 PM

non-reserved seating

All tickets: \$3.00

Buy tickets at:

Performing Arts Coliseum

WSU CUB Listening Lounge

U of I SUB

# A view from the mountains

By JOHN HECHT

In this week's mail, last week's Argh arrived. It contained a centerspread about the unveiling of plans for an expanded Wallace Complex Cafeteria. The new dining room, an on-off center of controversy over the last few years has apparently been formulated to the point that the proposal will be passed on to the Board of Regents.

Hopefully, in that time, additional consultation with student leaders, both elected ASUI officials and appropriate dorm boards, will be made beforehand.

The concept of more complete, more efficient

food service is not at all undesirable. There have been, and will continue to be, grumblings among the denizens of Theophilus Tower and Gault-Upham Halls about commuting to the WCC for meals, and that may or may not be overcome. If nothing else, incoming students will replace the incumbent

residents, and the memories of the Gault-Upham cafeteria will pass.

However, a major factor to be considered when gaining student approval is, once again, cost. Without the

benefits of plans and files at my fingertips, the following guesstimates and evaluations are made.

Present indications are for an additional 7000 feet of food service area, plus a basement for storage. If the basement is of equal size, there will be 14,000 new square feet. Estimated cost: \$1,900,000.

That is about \$135 per square foot (a standard measure of a building's cost).

The most expensive homes on the Sun Valley golf course, not far from where I live, cost about \$80. A prominent local architect told me, "Unfortunately, \$100 is about the market for such gathering spaces as a

large cafeteria."

If his ballpark figure is accurate, what are students getting for that extra \$500,000?

The cost savings for increased efficiency has been estimated at \$50,000 per year. At that rate, it will only take 38 years to make up the cost of the new addition.

However, a bond levy (as proposed) with interest for 25 years would probably double the cost, to at least \$3.8 million, which would take 78 years to pay back. Variables of inflation and the interest rate (whatever it would be) I don't understand so haven't plugged in.

The capacity of the present dorms is maybe almost 2500,

and just can't expand anymore. I feel it reasonable to believe that an increased student load would not be added to the new cafeteria. Thus, it appears that it will cost the GDI's about \$30 per semester more for the bond issue.

(Formula: 25 years x 2500 students per semester x 2 semesters per year (summer school not included) equals 125,000 student semesters divided into \$3.8 million).

In other words, on these assumptions, it might cost the GDI's \$150,000 per year to save \$50,000.

I welcome and accept any challenges and corrections to my figures, because in this case, I don't want to be right.

## Letters

### Poor players!

To the Editor:

I just can't tell you how much the pre-game schedule for the U of I-MSU game upset me. Those poor, undernourished, put-upon football players just made my heart bleed. Let me tell you a little bit about rotten conditions and winning teams.

Last weekend the U of I field hockey team traveled to Western Washington State College in Bellingham in one of the Vandal vans--that's an eight hour drive with fourteen people and their luggage crammed into a small bus. Not only did the team leave town at 6:30 a.m., they were not supplied with any breakfast; they made their own.

They arrived only thirty minutes prior to game time, and after losing a close 1-0 decision to WWSC, the team faced another two and a half hours in the van to get to Tacoma, site of their next game at 8:30 a.m. the following morning. The team arrived in Tacoma at 9:30 p.m. and had to roll out at 5:30 a.m. the next morning in order to allow their light breakfast time to settle before playing. Despite such hardships, they managed to beat CWSC in their morning game, and still come back to defeat yet another opponent, Pacific Lutheran University, at one o'clock the same afternoon.

This is not an exceptional weekend for the hockey team--it's a typical one--yet their season record now

stands at 6 wins, 3 losses, certainly a winning season so far. Other sports, men's as well as women's, face the same sort of difficulties, and they too seem to be able to produce winning teams. If a few inconveniences are enough to lose a football game for the Vandals, maybe they aren't all that great to begin with--it seems to me that winners win in spite of problems.

Maud Sterling

### Kincaid wrong

To the Editor:

Regarding Mr. Kincaid's October 26th "ASUI in Review" regarding his hangup about voting.

This problem of traveling such vast distances came as quite a shock, we just never realized Moscow to be a city covering such a tremendous space.

We cannot ever recall in the past that the Latah County Clerk having offered to bring the poll and the ballot into our living room just so it might be more convenient for us.

We find it difficult to believe that the officials are not trying to encourage or discourage the votes of the University students, but would be reasonably certain that centralizing the vote would be for betterment of the taxpayers of the area; a subject that Mr. Kincaid has probably little or no knowledge.

Kincaid mentioned Kibbie Dome in the article. Perhaps he would like to

instigate a movement to make this establishment available for the voting of the future; but to be of no charge to the public, for without inquiry, it is an almost certainty that the Moscow school board has made the Junior High School available on this same basis.

Most of us have traveled as far or even farther than the students of the university, and this is the first complaint of this nature that we have heard. In fact, the writer made this little jaunt round trip every single day while attending the university.

Kincaid has proven to have little or no respect for local, state, or federal laws, yet is so quick to check with the Idaho Secretary of State pertaining to the legality of a centralized poll; what sort of double standards does this person live?

If all of this proves to be too much for Mr. Kincaid, then might we suggest his departure. The university and the community has been operating quite smoothly for many years before, and they most certainly will continue to do so after Mr. Kincaid's departure, so if all of this is such a tremendous problem, let us suggest his immediate departure.

M.F. Herrmann  
R.W. Cummings

### Students commended

To the Editor:

The University of Idaho

has many areas of involvement outside of academics in which the students, faculty and community can take pride in their achievements. One such activity is the ASUI Red Cross Blood Drive held once a semester on this campus. Year after year the drive has netted and exceeded its goal of 440 pints of blood thanks to the donations of concerned people and to the work and dedication of many fine individuals and organizations. The ASUI Blood Drive Committee would like to take this opportunity to thank those who gave blood and to express our deep appreciation to the many groups whose members contributed their time, financial support, and talents in order to make the Fall 1976 Blood Drive a complete success.

Active sponsors:  
District Eight Nurses Association, Faculty Wives, Student Health Service, Elk's Temple, Regional Red Cross Center-Boise, SUB Cafeteria, KUID-KUOI, Intercollegiate Knights, Blue Key, Valkyries, Spurs, Delta Tau Delta, Tau Kappa Epsilon, Latah County Red Cross, ASUI Programs Office and Board, Sigma Alpha Epsilon, Graphic Arts Department.  
Donations of Refreshments:  
Faculty Wives, Alpha Gamma Delta, Alpha Phi, Delta Delta Delta, Delta Gamma, Alpha Chi Omega, Kappa Alpha Theta, Kappa Kappa Gamma, Spurs, Valkyries, Pi Beta Phi,

Gamma Phi Beta, French Hall, Modern Way Thrift, Moscow Bakery, Circle K Foods, Safeway, Rosauer's, Warehouse Foods.

The Blood Drive Committee realizes that it was a real sacrifice for most people to take a couple hours off from work or studies and we do apologize for the wait some people experienced. Giving a pint of blood is one of the most important gifts an individual can bestow on another. Hopefully, remembering that fact, each donor felt his time was worthwhile.

Once again, thanks to everyone who assisted with the Fall ASUI Red Cross Blood Drive and a personal word of appreciation and thanks to the committee members of the ASUI BLOOD DRIVE Committee.

Rusty Jesser  
Blood Drive Chairman

*The Argonaut welcomes and encourages expression of opinion from its readers through the Letters to the Editor column. All letters must be signed in ink; a typewriter signature is not sufficient. Otherwise, the letters will be returned unpublished. Names may be withheld upon request if the editor decides there is a valid reason to do so.*

At the polls ...

## Students reflect diversity

By ROSEMARY HAMMER

University of Idaho students turned out in large numbers to make their voices known at the polls yesterday. They expressed a variety of opinions concerning local issues, Jimmy Carter and Jerry Ford, as well as the centralized polling location.

This year, all 17 Moscow precincts cast their ballots at the Junior High School. Many students felt this was an inconvenient location, and wondered why the Kibbie Dome was not used.

For Jamie Schrock, the long lines and lengthy wait caused by them was just too much.

"I don't have time to vote if I have to stand in line for a half an hour or 45 minutes," he said, as he was leaving the polls without voting. He explained that he had to go back to campus for a class. A test in the evening, he continued, would prevent him from returning later.

Students expressed varying concerns when asked what local issues or positions voted upon were more important to them.

The contest for sheriff in this county, between Elton Walker and Mike Goetz, Democrat, evoked reaction from Don Bell. "Past law enforcement has been a little lopsided in certain areas," he said. Although he is an off-

campus liver, Bell does not like having the Moscow city police patrolling university grounds.

Tom Zachary considered the competition between Republican incumbent Steve Symms, and Democratic challenger Ken Pursley of the utmost importance. "I voted to get Symms out of office. That's the biggest reason I came today," he explained.

Local issues relating to this university were selected as most important by Jennifer Bischoff. "All the candidates seem really into the university," she remarked. She is especially concerned about the constitutional status of this institution.

As usual, everybody had something to say about the two major contenders for the oval office.

A supporter of Democrat Jimmy Carter, Marsha Hutchings, said, "everything done in Ford's administration has been done by default, Congress has acted in spite of him." She feels cut-backs should be made in the federal budget, but only in appropriate places. The military, in her opinion, is not one of them. Hailing from the state of Georgia, she said she liked the way Carter handled government spending when he was governor of that state.

Jan Piccard, on the other

hand, favors Republican Jerry Ford. "Carter never told his stand on the issues, not even during the debates," she complained. She thinks Ford is more reliable.

"I just hope whoever gets into office is opposed to nuclear engineering," noted Bell. Both candidates, however, represent big business, he said.

"The thing that concerns me is the environment, and that's the biggest reason I came to vote," said Zachary. While he considers Carter's environmental stance better than Ford's, he continued, "I don't think either one of them are competent."

Expressing little confidence in the Democratic candidate, Ed Buettner stated, "I just don't like the way Carter has run his campaign. It just seems to me he's trying to pull the wool over our eyes."

Economically concerned, Jim Lukens commented, "Ford is more frugal in federal spending than I think Jimmy Carter would be." A streamlined federal budget is favored by Lukens.

Viewing the possible outcome of this close presidential race, Jennifer Bischoff said, "The way I've seen things, the kind of people who would vote for Jimmy Carter won't vote. Ford's supporters will get out and vote."

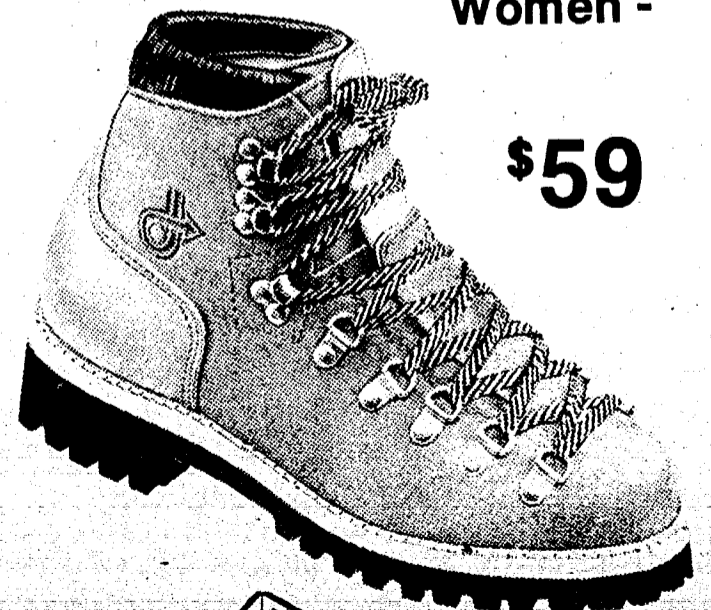


Take a walk, a long one. Up mountains. Through towns. In Dexter hiking boots. Built for comfort and long, long wear. With sturdy steadfast soles and heels. Hike in and see our collection. Your feet will love you for it. That's DEXTERITY.

# DEXTERITY



For -  
Men  
&  
Women -



\$59

DAVIDS  
DEPARTMENT STORE - MOSCOW

### RESUMES

Professionally  
typeset  
and  
printed

\$6.50 for 50

ASUI

Production Bureau  
885-6371

### RESEARCH

Thousands of Topics

Send for your up-to-date, 160-page, mail order catalog. Enclose \$1.00 to cover postage and handling.

RESEARCH ASSISTANCE, INC.  
11322 IDAHO AVE., # 206  
LOS ANGELES, CALIF. 90025  
(213) 477-8474

Our research papers are sold for research purposes only.

EVERY THURSDAY

TACO'S  
3/\$1.00

FOR SALE AT

TACO Ψ TIME

Hey ... it's A Kentucky

Fried Chicken Day!!

DINNER  
SPECIAL

\*2 pcs. Kentucky  
Fried Chicken

\*Mashed Potatoes and  
Gravy or Cole Slaw

\*Hot Roll



Have You  
Tried Our  
Delicious  
Hamburgers



Colonel Sanders Recipe

Kentucky Fried Chicken.

Pullman  
S. 1020 Grand

Moscow  
W. 310 3rd

**Holiday Flights**  
 Savings up to 25% on early excursion fare bookings  
 35% Savings on Air West weekend excursions  
 Flights Filling Fast!!!  
 Book NOW for savings.....  
 882-1310 Call or drop by



**Travel By Thompson**  
 Corner 6th and Main Sts. (next to the Fire Station)

NORTH IDAHO  
**A-2 HIGH SCHOOL  
 CHAMPIONSHIP PLAYOFF**  
**WALLACE  
 VS.  
 GRANGEVILLE**  
 THURSDAY 7:30 KIBBIE DOME  
 COLLEGE STUDENTS  
 \$1.50 WITH I.D.

*Dorothy's*  
 Fashion Fabrics, Inc. OPEN 9 am-6 pm Mon-Sat

5th & Main Moscow 882-3612

**Assorted Fabrics**  
 Over 2,000 yds

**49-98¢<sub>YD</sub>**

**FUR 60" ASST. wide COLORS**

**\$2.98<sub>YD</sub>**

# Waylon:



## Country music's outlaw

By DAVID NEIWERT

"Are You Ready for the Country?" asks the cover of Waylon Jennings' latest album, and it is an appropriate question for U of I students. This Saturday night they will get the chance to see Waylon and a flock of other performers as Utopia and ASUI present the biggest country music show yet seen in Moscow.

Waylon Jennings and the Waylors will appear with Jessi Colter and Steve Young in the ASUI-Kibbie Dome Nov. 6 at 8 p.m. Tickets are on sale at the SUB info desk and at Paradise Records for \$5.50. They will sell for \$6.00 at the door.

Waylon Jennings is one of the true veterans in the country music business; he is also one of the most progressive country artists. In recent years he has come

to be viewed as one of the business's so-called "outlaws" (as reflected by the title of a recent album which he appears on, along with Jessi Colter and Willie Nelson). Recently he has had a hit single, "Can't You See?" topping the charts in the U.S. and Canada.

Waylon is originally from Arizona, though he currently resides in Nashville, Tennessee.

Jessi Colter is also a country music veteran, and she is frequently associated with Waylon. At present she has

an album "Diamond in the Rough" that is three months topping the charts. She is expected to appear onstage for several numbers with Waylon as a part of Saturday's concert.

Steve Young is an RCA recording artist who has played with Waylon in the past and has now struck out on his own. His set will consist of performances of his own songs, played by Steve with no other instrument than a guitar.

The show is going to be a great one. Be sure to go.

## Events

### TODAY

... Economics Students Club meeting at 7 p.m., Ad 334 At 7:30 p.m. Professor R. Ashley Lyman will present a seminar on "The Influence of Regulatory Policies on Firm Behavior (in Utilities Industry). Faculty and students are invited to attend.

... Public Notice to all ASUI candidates: KUOI-FM will be broadcasting two programs featuring ASUI candidates. The first will be Sun. Nov. 14 at 6:30 p.m. featuring all Senate candidates. The second will be Mon. Nov. 15, at 6:30 p.m. If you, as a candidate, wish to participate, fill out one of the forms in the ASUI office in the SUB, and leave it in the box.

... The U of I Student Health Center has received a shipment of monovalent swine flu vaccine. This vaccine is available for anyone between the ages of 18 and 65. A vaccination clinic will be held tonight from 6 p.m. to 10 p.m., for those wishing inoculation. There is still a supply of bivalent vaccine on hand for those high-risk persons who have not as yet received an inoculation. This will be available as before, from 8 a.m. to 5 p.m. Monday through Friday.

### TOMORROW

... The Wildlife Society film: "So Little Time." Emphasizing the inter-relationship and importance of marsh areas to wildlife. Dick Pederson will answer questions concerning the Wildlife Society's proposed certification program following the 7:30 p.m. showing. Everyone welcome, noon and 7:30 p.m.

... German Kaffeeklatsch 4 p.m. at the Campus Christian Center. Short German film will be shown. Refreshments served.

... Football playoff, Wallace High School vs. Grangeville High School, 7:30 p.m.

... U of I Veterans Club meeting at 7 p.m. SUB Chief's Room.

... Phi Delta Kappa will meet in the SUB Ballroom 11:45 a.m. Guest speaker will be Richard Naskali. Topic is Inquiry. All are welcome.

### KUID-FM PROGRAM HIGHLIGHTS

#### ALBUM PREVIEWS: EVERY NIGHT AT 7 P.M.

Wed. Nov. 3 - T-House Forum No. 3

Thur. Nov. 4 - Joseph Byrd "Yankee Transcendoodle"

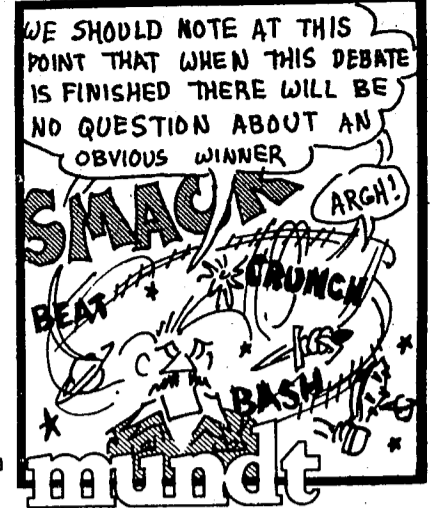
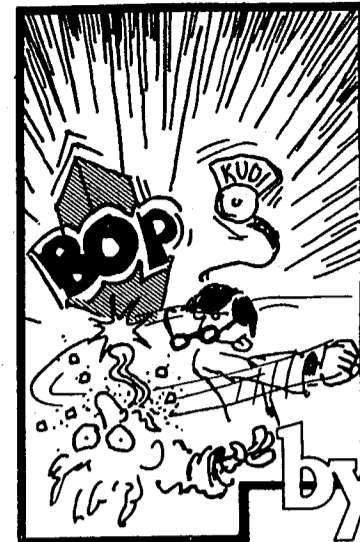
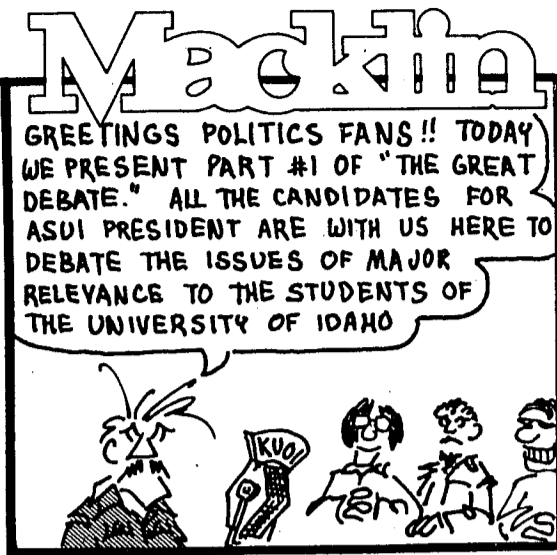
Fri. Nov. 5 - The Hometown Band "Flying"

Sat. Nov. 6 - Roy Ayers "Daddy Bugs and Friends"

Sun. Nov. 7 - Keith Jarrett "Arbour Zena"

#### PACIFICA PROGRAMS: EVERY SUNDAY AT 6 P.M.

Sun. Nov. 7 - "The Shiprock Show" - The background and confrontation between American Indians and a business which tried to turn their reservation into a factory - with the profit going into the business.



# Classifieds

## 1. APARTMENTS FOR RENT

A one room basement apartment, furnished, contact Moscow Realty Inc., 882-5531. All utilities are paid with the exception of electricity.

## 7. JOBS

R.N.-L.P.N. or medical technician: interesting parttime job taking medical histories and medical measurements for insurance applicants on see basis. Auto necessary, cover Moscow, Pullman, Colfax. Reply to Bev Douglas. P.M.I., Box 3485, Spokane, 99220. Equal Opportunity Employer.

## 8. FOR SALE

THINK STEREO THIS CHRISTMAS. Check out these prices: Bose 301: \$81.00 each; Marantz 1070: \$200.00. I represent a newcomer to the field of stereo retailing. We want to give you mail order prices with personal service. Check around, get your best price on any brand of stereo equipment, then call or come see me. I'll bet I can beat your price. George White, Krasco Stereo Inc. Representative, Room 1013 Chrisman Hall, (208) 885-6066. All orders can be shipped C.O.D.

Kenwood 4006 Amp and Kenwood 4007 Tuner, still under warranty. Dan Cornagey, 316 Lindley, 885-7221.

Mossberg Model 800 .308 Caliber win. with 4-power scope. Good hunting rifle. \$150.00 Leave message for Joel at 885-7578, room 327.

## 9. AUTOS

1963 Ford Galaxie 500. 390 cubic inch engine in good condition, automatic transmission, studded snow tires included. Best offer. 882-8307 after 7 p.m.

## 11. RIDES

I am interested in a CAR POOL. I live in Pullman and work in Moscow. Call Jan at 885-6716 or 332-6333.

## 12. WANTED

All persons interested in playing ice hockey, contact Bill Curran, 882-6286 or Matt Jensen, 882-1089.

Photographer needs female model for entry in Playboy's playmate photo contest. First prize worth \$2500 to the model. For details, write P.O. Box 2663, College Station, Pullman. Confidentiality assured.

## 13. PERSONALS

**The Adventures of Ted Auto:** I'm Ted Auto, and I'm the son of Ethel Edsel who was rear-ended by Dino Ferrari while at a stop light. I'll be here as long as my funds last.

## 14. ANNOUNCEMENTS

Comfort Zone is the BEDDER PLACE for water beds and accessories. Remember, we're the water bed professionals with a brand new store on the WSU campus. 1000 Colorado, Pullman--322 Main Street, Lewiston.

Reserve Saturday, Nov. 6 for Ballet Folk Guild's Octoberfest. Main exhibit building, Fairgrounds. Moscow Arts and Crafts, Plants, Food. 11-4.

Podiatry Associates, Chartered. Drs. Watling and Cox announced new Moscow office hours: Weds 8-4, Thurs 12-4. 308 South Jackson, 882-3513 or Lewiston, 743-2091.

## 16. LOST AND FOUND

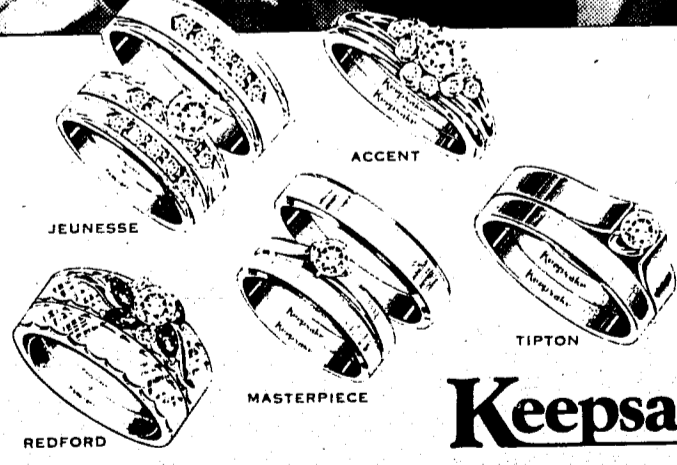
Found: 10 speed bike (recently). I'm interested in returning it. Please leave description, number, address at SUB Information Desk.

LOST DOG: Brown and white Saluki (resembles greyhound), female, collar. Any information appreciated. 882-1409 after 4.

Found: Friday, men's Photo-Grey glasses on Ad-lawn. 882-1317.

## The perfect gift for the one you love.

A perfect Keepsake diamond says it all, reflecting your love in its brilliance and beauty. And you can choose with confidence because the Keepsake guarantee assures perfect clarity, fine white color and precise modern cut. There is no finer diamond ring.



**Keepsake®**

# FOOTBALL

## "Little Battle of the Palouse"

Idaho Vandals vs Washington St. Cougars  
Kibbie-ASUI Dome

Mon., Nov. 8 - Kickoff 7:30 pm  
Tickets

UI students: Free (with valid ID)  
WSU students: \$1 (with valid ID)  
Youth 17 & under: \$1  
Adults: \$2



### How to Plan Your Engagement and Wedding

Everything about planning your engagement and wedding in a beautiful 20 page booklet. Also valuable information about diamond quality and styling. Gift offers for complete 44 page Bride's Keepsake Book and giant full color poster. All for 25¢.

Name \_\_\_\_\_  
Address \_\_\_\_\_  
City \_\_\_\_\_  
State \_\_\_\_\_ Zip \_\_\_\_\_  
Keepsake Diamond Rings, Box 90, Syracuse, New York 13201  
Find Keepsake Jewelers in Yellow pages or dial free 800-243-6100. In Conn. 800-582-6500.

# Election results

(Continued from page 3)

In Latah County Commission races, for the First District seat Republican Gary Morris defeated Democrat Dan Blood and Independent candidate Lee Lisher. Morris received 5,973 votes to Blood's 4,018 and Lisher's 1,454. Other final unofficial tallies showed Everett Hagen the winner in the Third District County Commissioner's race. He defeated Republican Leroy Carlson, by a vote of 5,961 to 5,390.

Morris commented last night saying, "One thing I feel that I found in this campaign is a new person that is actually interested in county government. That person is Dan Blood. I hope I'll be able to work with him and am looking forward to closer cooperation in county government."

"Of course I want to thank everyone who helped me on my campaign and I'm looking forward to getting to work on some of the things that I stand for," Hagen said.

Both Carlson and Hagen criticized the county for the lack of polling places in Moscow. Both said the one polling place at the junior high in east Moscow discouraged people from voting and new polling places should be found for future elections.

Democrat Mike Goetz captured the Latah County Sheriff's office, defeating Republican Elton Walker, 6,230 to 5,949.

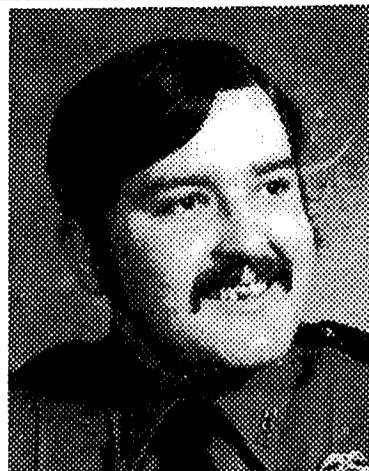
Goetz could not be reached for comment because he's working for the Latah County Sheriff's Department. One of the campaign issues he talked about was the non-rotation system. Goetz thinks it should be changed.

Latah County voters bucked national and statewide trends by backing President Gerald Ford and Democratic Congressional challenger Ken Pursley. The presidential preference by Latah voters according to unofficial tallies was: Gerald Ford, 6,840; Jimmy Carter, 5,307; Roger McBride (Libertarian Party), 174; Lester Maddox (American Independent), 96; and Lyndon Larouche (U.S. Labor Party), 40.

Although Idaho favored Ford by a similar margin, Democrat Jimmy Carter captured the presidency. Meanwhile, Republican First District Congressman Steve Symms held off a stiff challenge from Ken Pursley.

Latah voters favored Pursley, 7,537 over Symms' 5,130. With half of the precincts reporting, Symms was leading 35,968 to 27,889.

One Republican and one



MIKE GOETZ

Democrat were returning to office in uncontested races, as Coroner Ed Boas and Prosecuting Attorney Bill Hamlett were re-elected.



EVERETT HAGEN

In line with statewide trends, Latah County voters approved both constitutional amendments on the ballot. They favored setting up a



GARY MORRIS

legislative pay commission by 7,428 to 3,678. SJR 109 providing for a change in utility bonding guidelines was favored 7,686 to 3,219.

**We've been slaving all day over a hot stove—so you don't have to!**



We've got a Tacorrific answer to the old "What's for dinner" dilemma. A bagful of tangy taste treats the whole family will appreciate tonight!

**It's Tacorrific!**  
EVERY WEDNESDAY!  
**3 TACOS 97¢**

OPEN 11:00 am—1:30 am MON-SAT  
11:00 am—11:00 pm SUN

**520 W. 3rd Street Moscow 882-1151**

UTOPIA & ASUI presents  
IN CONCERT

**Waylon JENNINGS**

AND THE WAYLORS

**Jessi Colter**

**STEVE YOUNG**

SATURDAY

NOVEMBER 6, 1976 8PM  
UNIVERSITY OF IDAHO  
KIBBIE DOME  
TICKETS \$5.50 ADVANCE  
\$6.50 DOOR

Tickets Available  
IN MOSCOW: THE SUB & PARADISE RECORDS

STUDENT DISCOUNT TICKETS  
LIMITED QUANTITY  
**\$5.00**  
On sale at the SUB ONLY