

Argonaut

Tuesday, Nov. 16, 1976
Moscow, Idaho 83843
Vol. 81, No. 24



Where were
you when the
lights went
out?

A power blackout kept parts of Moscow and the U of I campus in the dark Friday for more than 10 hours.

A Washington Water Power Company transformer, at a power substation north of Moscow, "blew up internally," according to WWP administrator John Murray, leaving parts of the city without lights from 10:20 a.m. to 8 p.m.

The transformer cost the company about \$125,000, Murray said, and the delay in replacing it was due to the fact that WWP "doesn't keep that sort of thing on the shelf" in case of malfunctions.

A mobile transformer unit, smaller than the one which failed Friday, was brought to Moscow from Spokane, Murray said, and is still serving the city. It will remain in place for about two weeks, he added, until a unit identical to the one that blew up, can be brought to Moscow from Coeur d'Alene for installation.

The Company made a special effort to restore parts of the U of I campus as early as possible Friday, he said. Power for the north section of Moscow was routed through the city's second transformer on the Troy highway.

The unit restored power to university dormitories by dinner time, according to Murray, although the SUB cafeteria quit serving after lunch time and closed about 3:30 in the afternoon.

Murray said the Troy highway substation, which once served the entire city, was used to restore power to local businesses before the unit was installed to provide power for residential areas.

The blackout complicated a number of weekend activities on campus, according to SUB General Manager Dean Vettrus. A conference of Northern Idaho city officials and a reunion of College of Education graduates was scheduled for the SUB during the power outage.

The cafeteria remained closed until Saturday morning, Vettrus said, but the Campus Chest week dance and a movie for the Vandal football team were carried out on schedule Friday night.

Moscow saw another power outage on the east part of town last night.

The outage, designed to shift the amount of power to areas of high use was necessary in part, because of Friday's outage, according to WWP administrator Murray.

NOVEMBER 16th THRU 19th

- Limited To Stock On Hand -

TRI-STATE'S
GOT

CAPITOL
IDEA



\$2.99
LP'S

FERLIN HUSKY
QUICKSILVER
JUDY GARLAND
JOE SOUTH
BOB SEGER
MERLE TRAVIS
ROY CLARK
JANIS IAN
BOBBIE GENTRY
BLOODROCK

PLUS MANY MANY

MORE ARTISTS

Tri-State

"the family store"
TRI-STATE
OPEN DAILY FROM 11 AM TO 10 PM SATURDAY 11 AM TO 8 PM

1040 PULMAN RD. MOSCOW, IDAHO

In this ISSUE...

4 The ASUI elections create last minute student interests as the Argonaut feels the collective pulse of the students with a number of letters to the editor.

5 And still more letters to the editor.

10 And still more letters to the editor.

11 And finally a last page of letters to the editor.

Argonaut

Published twice weekly, Tuesdays and Fridays, by the Communications Board, Associated Students of the University of Idaho, Mike Gallagher, Chairman. Offices are located in the basement of the Student Union Building, 620 Deakin Ave., Moscow, phone (208) 885-6373. The opinions expressed on the editorial pages of the Argonaut are those of the author solely. Nothing printed in the Argonaut necessarily represents the views of the University of Idaho or its Board of Regents.

EDITOR
Sue Thomas
ASSOCIATE EDITOR
Bill Lewis
COPY EDITORS
Andrew Shepard
Kelly Amos
STAFF WRITERS
Pat Erickson
Beth Goff
Kevin McMahan
Jerome Montague
Tim O'Reilly
Martin Trilhaase
Scott Westwood
Don Williams
FEATURE WRITERS
Rosemary Hammer
Bill Loftus
Susan Sample
ENTERTAINMENT EDITOR
David Neiwert
SPORTS EDITOR
Craig Carter

SPORTS WRITERS
Jim Border
Bill Kottland
Mike Peeryman
ADVERTISING MANAGER
Mark Becker
ADVERTISING SALES
Stacie Dagers
Mark James
Iddie Sue Judy
Jack Herbaugh
Rick Britt
Bill Kirtland
Mike Kossman
Linda Westberg
PROMOTIONS MANAGER
Dennis Matsuda
PROOFREADER
Debbie Peterson
BUSINESS MANAGER
Mike Helbling
CARTOONISTS
Mike Mundi

Jon Pogorelskin
DESIGN CONSULTANT
Doug Johnston
CIRCULATION
Mike Tracy
Keith Schreiber
Jon Pogorelskin
PHOTOGRAPHERS
Jim Collyer-Director
Steve Davis
Steve Fenton
Lenore Garwood
Karl Lindblom
Rick Steiner
PRODUCTION BUREAU
John Pool-Director
Joel Anderson
Alberta Carr
Diane Gillespie
Brenda Hirte
Chris Pietsch
Colleen Pruitt
Laurel Simos
Sandra Stacki
Mary Watt

Distributed free of charge to students on campus, mail subscriptions, \$5.00 per semester, \$8.00 per year. Second class postage paid at Moscow, Idaho 83843.





MIKE GALLAGHER



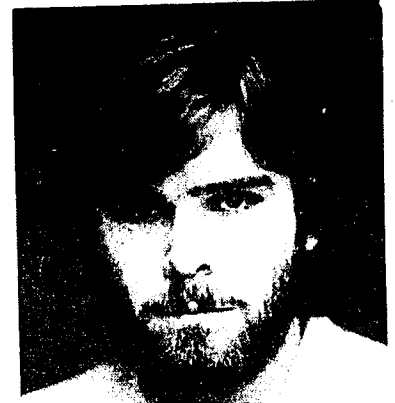
TOM LAPOINTE



MARK LIMBAUGH



LYNN TOMINAGA



JAY WILLIAMS

Candidates prepare for final campaigning

By BILL LEWIS and DON WILLIAMS

The twenty candidates for various ASUI posts should know by late tomorrow night whether the work they've put into this month's campaign has paid off.

Polls will be open between 8:45 am and 5:15 pm tomorrow, with students voting in the SUB, Physical Science, Administration, Life Sciences, Education, Agricultural Science, Law, Jansen Engineering and Forestry Buildings, as well as the Wallace Complex and Theophilus Tower.

ASUI Election Board Chairman Mike Campos said returns will be counted after the polls close tomorrow, with unofficial returns released throughout the night, beginning at 9:30 p.m. He said an official count will be released Thursday afternoon after the Election Board completes a recount of the returns. Returns will be announced throughout the evening on KUOI-FM and KRPL-AM radio.

Six candidates: Mike Gallagher, Jay Williams, Lynn Tominaga, Gary Kidwell, Mark Limbaugh and Tom LaPointe are running to replace David Warnick as ASUI President.

Presently the head of the ASUI Communications Department, Gallagher says the new President should work to better communications with the Board of Regents and the state legislature.

The ASUI should work to convince state policy-makers

that student input is needed in determining the fee structure at the U of I, and changing the school's liquor policy.

Changes in that policy were also called for by Williams, who specifically mentioned the Kibbie-ASUI Dome as a place where students should be allowed to consume liquor.

He also added the President should work for the interests of women students and said he would institute an escort service for women wary of walking through the campus late at night.

Changes in the school's budget were called for by Tominaga, a current member of the ASUI Senate. He said the U of I athletic budget should be changed to provide more money for minor sports, with students controlling which sports receive funding.

Tominaga supports students lobbying at the Idaho legislature, saying the students should consider hiring a full time lobbyist to represent them in Boise.

A former ASUI Senator, Kidwell stressed experience in his campaign saying he has supported past programs, such as legislative action

endeavors and a constitutional amendment on tomorrow's ballot which makes it easier to recall a senator.

Kidwell also voiced support for alcohol on campus and reservations about a parking fee system which will take effect next year.

Limbaugh, also an ASUI Senator says he would increase student involvement in ASUI matters, with the appointment of both an undergraduate and a graduate assistant, as well as working to improve the public relations image of the school throughout the state.

He called for changes in U of I facilities, saying the ASUI programs such as the Golf Course should be reexamined with the new President working to make them more self sufficient.

He also supports expansion of the ASUI Bookstore and the addition of a bar and possibly a small ice rink to the golf course.

The two Vice-presidential candidates, Scott Allen and Gary Quigley don't differ on many issues before the ASUI.

Both support liquor on campus, with Allen saying such a move would provide

more money for the ASUI Golf Course. Quigley cautions the school should go slowly on the issue however, "to avoid any embarrassing situations."

Allen called for better communications among students in his campaign, saying he would support a newsletter of ASUI activities which would be sent to living groups and individual students to keep them informed of what goes on in student government.

Allen stressed cooperation between students, faculty and staff members, saying all three groups have a common interest in working for better funding of the U of I.

Twelve candidates are running for seven open positions on the ASUI Senate.

They include Greg Miller, Bob Harding, Mike Ayersman, Rusty Jesser, Steve Bradbury, Stacey Silva, Bill Parkinson, Bob Arnold, Dan Prohaska, David McClure, Lee Pilon and Sally Johnson.

Ayersman, Jesser and Johnson were appointed to the senate this semester by Warnick replacing members



GARY KIDWELL

elected last year who had resigned.

Miller stressed more student control of the university, saying students should support a constitutional amendment calling for control of the SUB.

Harding supports senate lobbying activities at the Idaho Legislature, saying senators "should actively confront" lawmakers on financial issues.

Ayersman supports retention of the present Pass-Fail option system and a beer license for the Golf Course, while he opposes proposed parking fees.

Senators should encourage students to make their voices heard, Jesser says, adding

(Continued on page 14)

**HAPPINESS IS A CONFIRMED
RESERVATION HOME**

Holiday Reservations going fast

Air/Amtrak

Call 882-8723
or STOP BY
524 South Main

NEELYS
TRAVEL SERVICE

ASUI

Limbaugh

For President

GET INTO WINTER!

with

7 Free Ski Films



Alpine and Cross Country

Tuesday, November 16, 7:30 pm

in the

Borah Theatre, SUB

Cross Country Ski Slide Show

Thursday, November 18, 7:30 pm

in the

Borah Theatre, SUB

Both Sponsored By The Outdoor Program

Do-it-Yourself
CHRISTMAS

GIFTS

Ken's
stationery Moscow

Report from Rutgers

By HENRY EBERT

Post-election festiveness reigned in New York City tonight, as much in reaction to the election of Jimmy Carter as to perceptions of economic prosperity. Manhattan is alive with well-dressed movie goers paying \$3.50 and up for first-week runs of new shows, such as "THE FRONT" with Woody Allen or Truffaut's latest creation, "SMALL CHANGE."

Rolls Royce sedans and Cadillac limousines mix with Subaru station wagons and Chevy vans. Mink-clad beauties stroll the sidewalks of 3rd Avenue; some with coiffured poodles; leather-clad homosexuals strut along Canal Street. Some from

each group claim to have voted for Carter. A few shyly admitted to having supported Ford. New Yorkers also gave a smattering of write-in votes to McCarthy as his last minute court challenge to be placed on the New York State ballot failed.

New Yorkers are by and large heavily Democratic. Pre-election day estimates by Carter organizers in the Big Apple gave their candidate a 500,000 vote lead over the incumbent Ford who had said "No" to New York City. The bright sunny weather on November 2nd added considerably to the modest expectations of Carter politicians. When the polls finally closed at 9 p.m. modesty had given way to

unguarded euphoria. Some were daring to believe that voter turnout in some wards was close to 75 per cent. In some cases, it proved to be higher. New Yorkers had turned out in full force, and it showed in the returns.

Another race figured prominently in the eyes of voters in New York State, that being the Buckley - Moynihan contest for the former's Senate seat. The high returns in the City weighed against the traditionally Republican votes from the suburbs and from up-state New York. As in the spirited Senatorial race in California which was also won by the challenger, this race high-lighted and in some cases took precedence over the more banal national

election. Jewish voters in the Queens and the Bronx were loathe to forget Patrick Moynihan's ardent defense of the State of Israel while he served in the United Nations.

Reactions at Republican headquarters in New York City ranged from hopeful at the onset of the evening to gloomy as the night progressed. Occasional cheers pierced the air as the returns from Connecticut and the middle-Atlantic states trickled in, but it was not long before the 3 per cent lead established by Carter dominated over and over again the six foot television screens. Dejected viewers shuffled over crushed plastic cups several hours before

Ford had gone to bed. Few bothered to listen to Carter's softspoken claim to victory.

Celebrations in the various Carter-Democratic headquarters had commenced several hours before the polls closed.

Carterites were quick to claim victory and then to move on with the business of the country. Traditional Democrats, like Gerald Pomper, chairman of the Rutgers University Graduate School of Political Science "called" the race in Carter's favor several days before the election, but were prudent enough to state, "It won't be hairbreadth close, but it will be relatively close."

Letters

Amendments

To the editor:

Wednesday (November 17) the students of this university will not only have the opportunity to elect a new ASUI President, Vice President, and 7 new Senators, but to vote on two constitutional amendments. The amendments are important and deserve your consideration. Both amendments have the full backing of the Senate.

The first amendment would clarify the role of the ASUI in budgeting various student fees. Presently there are a number of ambiguities which exist. The new wording would be more specific and eliminate differences of interpretation between the administration and the ASUI.

The second amendment would lower the percentage of student signatures needed to recall an elected ASUI official from the present 20 per cent to 5 per cent. With procedures to recall less restrictive, ASUI elected officials would be more responsive to the needs, desires, and wishes of the students they represent.

During the past three years while attending the University of Idaho I have seen the ASUI grow in prestige and power as an active and viable organization. In order to stay strong the ASUI needs the support and help of the entire campus.

Vote for the candidates of your choice next Wednesday. It does make a difference!

Rusty Jesser

Johnson fan's

To the Editor

Johnson's campaign for ASUI Senate, we'd like to take this opportunity to relate her philosophy to the living groups and students that she was unable to meet and talk with. Sally was appointed senator a month and a half ago and has supported such bills as the senate parking proposal, financing of the bowling team, and the KUOI 50 watt-chief engineer issue. These votes have not necessarily represented her personal opinions, because she feels it essential to carry her living groups' vote. As a senator though, Sally is not only concerned with her living groups' opinions, but those of the entire ASUI. She views in-state tuition, itemization of the proposed parking monies, the alcohol catering policy in the SUB, and the senate as a true voice of the students, as important issues. Sally has had the experience--keep Sally in the Senate. We hope you'll turn out to vote.

Carol May, Campaign Manager and 106 supporters

Problem tackler

To the Editor:

I am writing this letter in support of Steve Bradbury for ASUI Senate. I would recommend him for the position of Senator for the following reasons. Steve is well informed on the issues, and is concerned with the welfare of the University of Idaho, with special concern for the students. He is the type of person who will go out and tackle the problems that will face him, instead of sitting back and letting the problems just come to him. Steve is receptive to the needs of the students and

students' goals. I think being a Senator means more than just having a title, it means having an open mind and being responsive to the students wishes. Steve Bradbury is this kind of person. If you are looking for dynamic representation, vote as I will and elect Steve Bradbury for ASUI Senate.

Gus Pomeroy

Pull together

To the Editor:

Bob Arnold believes that the ASUI must pull together and unite to keep fees down. This will take a concerted lobby effort with the Legislature in the near future.

The following living group presidents on both sides of campus have endorsed an "off-campus" candidate: Paul Vassalotte, McConnell; Rich Kaufman, SAE; Mark Holsteen, Borah; Rory Jones, DTD, Kevin Sharrai, Whitman; Anne Williamson, DG; and Ed Moilanen, TKE.

Bob Arnold believes that student government must produce tangible results to win respect and keep support of the student body--a must for credibility with the State Legislature.

As an example of the student government doing something with what it has: Bob believes that the ASUI should--without fee increases--support carpeting the Library as the one "pit" that everyone must use and where quiet is needed by 1) Redirecting the profit made from the Library food machines from the SUB to the Library, 2) Lobbying the Administration to return Library fine money to the Library, 3) Direct ASUI

Legislature.

Finally, Bob Arnold has some experience with lobbying in the State Legislature. He helped lobby the 1976 presidential primary bill before the Senate State Affairs Committee.

Bob Arnold deserves consideration as one of your seven votes for senator in Wednesday's election.

Bill Barrus, TKE

Kidwell supported

To the editor:

I'm sure with the general election just behind us that most readers have had just about enough of political campaigns. However, the upcoming ASUI elections are of significant importance to all students. I feel that it is important that students be familiar with the candidates.

There is one candidate running for ASUI President who warrants special notice. Gary Kidwell represents a strong voice for student government. Gary has served us well in the ASUI Senate as well as working extensively with the State Legislature. Gary has the experience and qualifications needed to be an effective president.

Gary has also been successful in intercollegiate speech competition, developing the skills necessary to be a successful student representative and lobbyist. Related, and even more important, are the lines of communication Gary has developed in the past with the Board of Regents, the Alumni Board, and the State Legislature. These lines are crucial if a president is to work with rather than against these

elects no vital time would be wasted establishing these lines; they are already there.

As a person, Gary is very amiable, and would be able to work with anyone. As a former dorm resident and presently living off campus, Gary is aware of the problems both these groups face. Also, his promised open door policy will make it better possible for him to represent all students more honestly. So, for a strong voice for student government, elect Gary Kidwell for ASUI President. But no matter how you vote, please vote. It will make a difference.

We, the undersigned, support Gary Kidwell for the office of ASUI President.

David Waters
President, Wallace Complex Board and 51 other students

Rumor stopped

To the Editor:

There is a rumor that I am running on a ticket campaign with a presidential candidate. There is no truth in this rumor and anyone who is of this thought is mistaken. I will run on my own merits and not on the coat tails of any other candidates.

These rumors are getting out of hand and possibly there should be a clearing of the air. Mr. Quigley and myself would appreciate it if you heard any rumors to quell them until you have checked with us. Be sure and vote Nov. 17.

Scott Allen
ASUI Vice Presidential Candidate

More letters

Tominaga fans

To the Editor:

Lynn Tominaga has proved his responsibility and his willingness to work in his position on the senate. He is committed to the students, their ideas and their needs from the University. Lynn is running for ASUI President because he is genuinely interested in the students and feels that he is able to devote his time and effort to seeing that these interests and ideas are executed to their fullest extent.

Mike Ayersman was appointed to the senate approximately 2 months ago and feels that he has finally realized the possibilities to which the Senate can help the students. Mike is realistic though, in that he knows not all problems can be resolved in a short time period, but he is willing to spend all the time necessary to help solve them. He wants to see that the senators are made more responsible so that all living groups and off-campus students know the senate's potential for University issues.

Mike and Lynn are sincere in their desire to help the students; they feel that a working relationship between the Administration, the Board of Regents and the students is essential to a productive, democratic system.

We the undersigned, endorse Lynn Tominaga (running for ASUI President) and Mike Ayersman (running for Senator).

Janet Schaeffer
and six other students

Arg misquotes

To the Editor:

In last Friday's Argonaut an article was written on the Vice Presidential candidates, in which there were misquotes regarding my stand on issues. I was quoted in that article as saying, "It is not unreasonable to expect an increase of at least \$50 to support these teams." (These teams referring to minor sport teams.) I have never made such a statement! It IS unreasonable to expect an increase of such an amount to fund minor sports.

Here is what I said in the written statement that I released to the Argonaut regarding the funding of minor sports. "If the proposed \$18 athletic fee increase had been passed at the last Board of Regents meeting, U of I students

would have already been paying \$46 a semester compared to \$18 at BSU and \$22 at ISU." "We should keep this in mind when we consider funding for minor sports." "It is not unrealistic to be talking about \$60 a semester fee for athletics in the next 4 or 5 years." I hope this clears up any misunderstandings on this subject. Thank you for allowing me to clarify this matter.

Gary Quigley

Students chance

To the editor:

Once again the ASUI elections are upon us. And once again we the students will have the opportunity to determine the future of the student voice in the legislature, Board of Regents, and administration decision making process.

While each candidate for the office of ASUI President state they will represent student opinion, how many of them really have the total experience to effectively voice credible student concerns?

It takes much more than a candidate's personal goals or crusades to represent real student concerns. Simply put, it takes a student who can perceive, can listen, and can relay sincerely what the consumer of higher education needs and wants. It takes a person who knows how and has proven his capability to work with legislators, regents, administrators and students alike. This year that one and only person is Mike Gallagher.

Mike has been involved in the ASUI long before any of the other candidates knew what Associated Students University of Idaho meant. He has proven and respected administrative abilities which are so essential to understanding and relating to student concerns.

He sees no need, as other candidates, to alter drastically the course which we have been taking. Mike has expressed his commitment to solidifying and building on the foundation which has been laid by the Warnick administration.

Anyone who is even acutely aware realizes that there are very real problems facing this university—problems that cannot be answered or solved by rhetoric, but problems that can only be solved by a person with experience and a sincere desire to serve. We would all be wise to

vote for experience on Wednesday, Nov. 17th. A vote for Mike Gallagher assures us of this.

Kerry S. "Jed" Jeaudoin

Ayersman fans

To the editor:

The men of Lindley Hall wholeheartedly support Mike Ayersman for ASUI senator. Mike's enthusiasm for the senate is unsurpassed. His positive attitude and realistic approach to the problems facing the ASUI will allow him to be an effective member of the student government. We encourage the students of the University of Idaho to support Mike Ayersman, ASUI senate candidate.

Scott Larrondo,
and 31 other students

Poor coverage

To the Editor:

Your coverage of the election results in the Wednesday Nov. 3 Argonaut was an example of the irresponsible and prejudiced journalism we have come to expect from the bourgeois news media. In particular, we are referring to the coverage that was not given to third party candidates of the left, such as the Socialist Workers Party, Socialist Labor Party, Communist Party U.S.A., etc., even the moderate Eugene McCarthy. We feel this is a display of very poor journalism for a newspaper supposedly representing our academic community.

In another matter, we would like to thank you for that stimulating picture of the female bosom on the cover of Tuesday's Argonaut. What better way could there be to advertise the meaning of Chest Week than to exploit the female body and help perpetuate the sexist attitudes that dominate our society. The one thing that puzzles us though is why you didn't use a black.

These are just two examples of the type of "intelligent" reporting we have come to expect from the Argonaut. In the future we hope the editor and reporters will use their education to write a more objective and responsible newspaper.

Tim Daniels
Wayne Apostolik
Patrick Moore

Leadership needed

To the Editor:

As student fees keep

climbing, there is an increasing need for the student view point to be clearly expressed to the legislature. As the threat of in-state tuition looms, we need an effective spokesman. For that view point to be listened to, a working knowledge of Idaho's Legislature is absolutely imperative.

Only one candidate for major ASUI office has worked in the legislature during its session. Only one candidate has had a close working relationship with the Chairman of the Senate Education Committee. That person is Gary Quigley.

There is also an ASUI senate candidate that has had lobbying experience with the Idaho Legislature. Bob Arnold lobbied before the Senate State Affairs Committee on the 1976 presidential primary bill which became law.

When you want an effective spokesman, there is no substitute for knowledge and experience. Sometimes quiet people with knowledge and access can get more done.

Both Gary Quigley and Bob Arnold need your vote to be an effective representative of student needs

Glenn Miles

Quality leadership

To the Editor and the students:

Tomorrow you will have a chance to select how responsive and effective the ASUI administration will be for the next year. And you have a wide variety of presidential candidates to choose from, all of whom boast their personal qualities and qualifications.

Among these qualifications is one that should be foremost in your mind, one that cannot be spoken of directly by the candidates, but one that is necessary for an effective president, and that quality is leadership.

Having served on the senate this semester with Mark Limbaugh I have recognized, first hand, the kind of leadership Mark possesses, and this leadership separates him from the pack.

It is your choice, but if Mark Limbaugh is elected tomorrow it will be your voice that is represented on campus and heard throughout the state of Idaho. I urge your support of him.

Jim Shek
ASUI Senator

More for Lynn

To the Editor:

This is a letter of endorsement for Lynn Tominaga's candidacy for ASUI President. Lynn has several attributes which make him the best choice for the top student position.

First, as an ASUI Senator Lynn has demonstrated an unusual willingness to listen to his constituency—the students. He is open to all opinions and when he votes it is in accordance to what he feels the majority of students want.

Second, Lynn is the one candidate who will not come across to the Board of Regents, the legislature, and the administration as a brash "know-it-all." It is not enough for a president to present the student's case, it must be presented in such a way that these people know the concern is genuine—not just the rhetoric of an ambitious "Big Man On Campus." Lynn's genuine friendliness and candor will win the respect of these people and provide the students with much more influence on a statewide level. The current funding controversies make this especially important.

Lastly, Lynn has proven that he will work hard for the students. Besides being an ASUI Senator, Lynn has held nearly every responsible position in Upham Hall, has served as a coordinator for the SEND campaign, and served this summer in the legislative action program.

For those who know Lynn, this letter is quite unnecessary—they know he is the best choice. But for those who do not know him well, I urge you to vote Lynn Tominaga, we need the kind of president that Lynn would make.

Jim Chase
Willis Sweet

Complaints?

To the Editor:

The Athletic Advisory Board has heard of complaints about the Swim Center, but nothing first-hand or specific has come to our attention. If anyone has a definite gripe, or something about the Swim Center which you feel should be changed, please contact any board member or come to our next meeting Thursday at 6:30 p.m. The room will be posted on the SUB information board.

The Athletic Advisory Board

(Continued on page 10)

Defense shines...

Vandals maul larger Grizzly team 29-18

By JIM BORDEN

Montana was bigger but Idaho was better.

The Idaho Vandals removed any doubt of their football authenticity Saturday night as they colorfully and delightfully downed a larger Montana Grizzly team 28-19.

The Big Sky Conference game was closer than the score indicates as Montana could have tied it in the fourth quarter, but Idaho never trailed. The win boosts Idaho's season record to 6-4, 4-1 in Big Sky play, while Montana is now 3-6 overall, 3-3 in final conference standings.

Idaho drew blood three times in the first half before Montana was able to score, and those three touchdowns, scored on runs by Tim Lappano, Robert Brooks, and Rocky Tuttle, plus the three extra points, proved to be enough to win the contest, although Montana did scare Idaho late in the last quarter.

The Vandals led 21-0 early in the second quarter, but Montana came back with a touchdown and field goal by halftime, and then added a third quarter field goal and a touchdown with 2:56 left in the game.

Montana could have tied the game here with a two-point conversion but the pass from quarterback Mike Magner failed, and the score remained 21-19.

Rick Linehan pounced on the ensuing Montana on-sides kick, giving Idaho the ball on its own 49-yard line. Eight plays later, with 46 seconds left in the game, Kevin McAfee skipped one yard into the end zone, and with Ralph Lowe's kick, it was 28-19.

It's probably best that Idaho scored early and fast, as near the end of the first half and through the rest of the game, with the exception of the last drive, Idaho became infected with fumbleitis, dropping the ball four times, with Montana scooping up all four.

But the Idaho defense shined like never before. The unit forced three of the five Grizzly fumbles and recovered one of those, with special teams recovering another.

Idaho defenders also dropped the Montana passer four times during the game. The Vandal "D" held Grizzly runners to 222 net yards, and only gave up 103 net aerial yards.

When Idaho could hold onto the ball, they moved as well as a sleek locomotive slipping through the countryside. Idaho collected 264 ground yards, and 211 net aerial yards for a total offense of 475 yards.

For other Big Sky teams over the weekend, it was Northern Arizona University 30, Weber State 18; Boise State 36, Idaho State 0; and Montana State 28, Hawaii 7.

This Saturday, Northern Arizona comes to Moscow

for the final conference game of the season for both teams to decide the league's second

place. Both Idaho and NAU stand at 4-1 in Big Sky, as both teams lost to conference champ MSU.



LaPointe / ASUI President

We the undersigned believe it to be in the best interests of the entire student body to elect Tom LaPointe President of the ASUI

Tom Neff
Jeffrey E. Tracey
Joel Reiman
Georgia Bashaw
Jay Kline
David Rohrback
Doug Andrews
Tom Shuhda
Paul Mitro
Dave Chamberlain
Sarah Wilkinson
Everett J. Groudin Jr.
Steven J. Brunfeld
Beth Carrell
James M. Galea

Mike Downum
Edwin E. Gladder
Alberta Carr
Gregory Williamson
Keith Spotleson
Stacey Silva
Robert A. Beal
Dennis Pullen
Dianne Larson
Michael Pate
Patrick Ericksen
Kassim Shehim
Mark Chavez
Laurel J. Simos
Diane Matushek

Tom McGrane
Mike Mundt
Donnie Wayne Vogel I
David Neiwert
Patrick Gagon
James A. Spent
Jim Collyer
Michael P. Benes
Don Hite
Wm. Wilkinson
Ali Alhasion
Warren K. Parkinson
Patrick Lindo
Jeff Parnett
Tim Sampson

Paid for by the committee to elect Tom LaPointe President. Georgia Bashaw and Paul Mitro Co-chairpersons

BSU takes X-country title

By MIKE PERRYMAN

Traveling to the south this weekend, the U of I cross country team didn't fare quite as well as coach Mike Keller had expected. Idaho sustained the off-day blues in the championship tournament which found the U of I returning to the Falouse with a third place tie with the University of Montana.

The winning team, Boise State, "ran super, real well," said Keller. The course was relatively flat, one hill up and one coming down. The run itself covered a distance of 8,043.2 meters, which is relatively short for a cross country team of Idaho's caliber.

Idaho's biggest trouble came when the number three runner, Scott Knoblich, cramped up. This meant that the number four man, Rich Ward, had to pick up Knoblich's position and try to gain some ground. As it turned out, Ward was unable to pull off the impossible and ended as number fifteen in the race.

Idaho was able to place two men in the top ten; the number one man, Doug Beckman-7th and the freshman, Grayson Pihilaja-9th. Terry Griffin, who did not do as well as had been expected, finished a disappointing twelfth. Griffin may have been running with the early stages of flu, as he was very ill on Sunday. Junior, Rich Ward, came in fifteenth. Back in the pack came Rich Bartlett in spot twenty-six followed by Scott

Knoblich, twenty-seventh.

Winning the race was defending champ Dean Erhard of the U of Montana. Erhard's time was 24 minutes, 34 seconds. Taking second was Boise's Van Dine followed by Jim Trapp of Northern Arizona for third.

In team standings, Boise was the leader with 30 points, Northern Arizona 52-points, Idaho and the University of Montana tying for third with 69, Weber State, 140, Idaho State 176, Montana State 193 points, and rounding out the field was Gonzaga of Spokane with 250 total points.

When next year's Big Sky Championship meet rolls around, the course will be increased in distance from eight-thousand meters, to ten-thousand meters or 6.2 miles.

Idaho will finish out their regular season of play this Thursday at Spokane Community College, when they will compete in the United States Track and Field Federation meet. The meet in Spokane is similar in sanction to the NCAA meets, with the best three mile running times recorded and sent to the head office in Arizona for future running competition.

Soccer team wins one!

Idaho won their first soccer game of the season dumping Whitworth College by a score of 7-0 Sunday. The Idaho team put on an offensive display in the first half of the game sparking them to a Northwest Intercollegiate Soccer League win.

The first half of the game was all Idaho as they scored six goals against the Whitworth team. Leading the scorers for Idaho were Larry Houston who made three goals followed by Albert Alaya who hit two goals and Jim Ascomb who scored one.

Whitworth could do little to stop the Idaho squad in the first period.

The second half was like watching a different game as Idaho lost the scoring drive they had shown in the first half. Whitworth slowed Idaho down, holding them to one goal which was made by Robert Murray. Poor passing and overconfidence on Idaho's part was a factor in the lack of firepower.

The next game for Idaho will be this Friday at 8 p.m. in the Kibbie Dome when they host Gonzaga.

Women's Sports

The Idaho Women's Volleyball team dropped four straight matches over the weekend in the Oregon Invitational tournament at Eugene for a season record of 14-14.

Friday had Idaho succumbing to Western Washington State in the first three games of a three-out-of-five match, 7-15, 8-15, and 8-15.

Saturday, Idaho dropped three straight games to University of Oregon 1-15, 0-15, and 10-15. That same day, after winning the first two games 15-12, 15-13, Idaho again dropped three straight

to Southern Oregon State 6-15, 8-15, and 0-15. Also on Saturday, Oregon College of Education downed the Idaho team 2-15, 9-15, and 1-15.

The Idaho Women's Field Hockey team boosted its season record to 13-5-1 over the weekend in Southern Idaho, winning two games, but losing a third.

The team downed Northwest Nazarene College at Nampa Friday, 2-1, and handed College of Idaho a 5-0 loss the following day. The Idaho women, however, lost a 3-1 decision to cross-state rival Boise State on Saturday.

PUBLIC NOTICE

Sale Tues. Nov. 16 9:00 am
until Nov. 19, 6:00 pm

Slightly Damaged

Corduroy	98¢-49¢
Canvas	98¢-49¢
Gauze	49¢-25¢
Cotton Prints	79¢-39¢
Robe Fabric	\$1.49-75¢

Water repellant duck	\$1.98-98¢
Terry Cloth	\$2.98-\$1.49
60" Single Knits	98¢-49¢
Muslin	79¢-39¢
Matte Jersey	\$1.49-75¢
45" Corduroy	\$1.98-98¢
Wool	\$1.49-75¢
Flannel	\$1.69-88¢
White denium	\$1.49-75¢
60" Jersey	\$1.98-98¢

Special Purchase

2 1/2 Elastic for Waistband
\$1.19 - 19¢

Robe & pillow fur 60" 5⁵⁰ - 2⁹⁸

Terry cloth remnant \$1.00 lb = 75¢ yd

Embroidered patch defective 5¢ handful

Denim 45 x 60"
from famous blue jean manufacturer
\$3.50 yd - Good pant weight

Dorothy's

OPEN
9 am - 6 pm
Mon - Sat

TACO TIME

TOSTADO DINNER

99¢

Includes:
Mixi - Fries
and Salad

401 W. 6th
Moscow



Limbaugh

For President ☒

2 LOCATIONS
TO SERVE YOU

CASA DE ELENA

AUTHENTIC MEXICAN FOOD

East 3rd St., MOSCOW
2404 N&S Highway, LEWISTON
Ph. 743-1952

Imported & Domestic Beer - Wine

Entertainment

...Humor and Horror

By DAVID NEIWERT

This coming Friday and Saturday the folks of Moscow will be treated to a pair of film classics, brought here through the U of I Film Society. On Friday, the Howard Hawks classic, "Twentieth Century" will be shown; and on Saturday, the 20th, F.W. Murnau's silent movie extraordinaire "Faust" will be shown. Both films will be played in the Borah Theatre in the SUB at 7 and 9 p.m. with tickets selling for \$1.

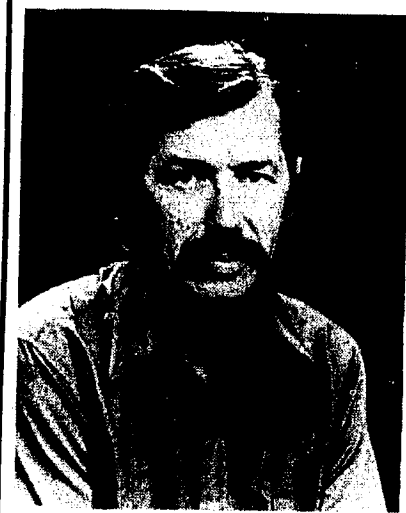
Twentieth Century is one of the better satiric farces that came out of the 1930's Hollywood Machine; at the time that it was made, Hollywood was not yet subject to the pressure of image conscious groups that made it impossible to create a satire of this nature. John Barrymore and Carol Lombard were the stars, and sex and money in 1930's society was the subject. All combine to create an

uproarious film that is considered the greatest of its genre. The action is fast-paced, and the acting and production is terrific. After all, who could ask for more than the combination of John Barrymore and Howard Hawks?

Faust, on the other hand, is the thematic opposite to Twentieth Century but it is just as great a movie, nonetheless. Based on the Goethe and Marlowe legend of a man who sells his soul to the forces of evil in exchange for unlimited worldly pleasure and knowledge, it is a somber, terrifying trip into the never-never land of dark fantasy. Made in 1926 by F.W. Murnau (who created the film Nosferatu) the movie pioneered the area of fantasy in the cinema by employing surrealist technique and classic horror in creating its spine-tingling effect.

All in all, they are a pair of movies that you won't want to miss. Be sure to go.

Charles D. Wright, Poet



Charles David Wright, Professor of English at Boise State University, will read from his poems on Wednesday at the Borah Theatre in the SUB. The reading will begin at 7:30 and it is open to the public free of charge.

Born in southern Illinois, Chuck Wright received his doctorate from the University of Iowa and began writing poems during his stay at the University of North Carolina (Chapel Hill) between 1962 and 1972. His first volume of poems, Early Rising (1968), was published by the UNC press. Copies will be available at the reading. Wright's poems have

appeared in such periodicals as "The Saturday Review," "Harpers," "The New American Review," and "New Letters." He has read throughout the United States, where he has worked in Poets-in-the-Schools, and in Greece and Yugoslavia. His reading Wednesday will be from a new book, "Clearing Away," which is near publication.

The poems from his new book he describes as attempts to "square things away," to "re-evaluate." Wright will spend next summer at the McDowell Colony for artists and writers in New Hampshire.

VOTE

LYNN TOMINAGA

ASUI PRESIDENT

For a change: he'll
listen and he'll act.

Paid For By The Students To Elect Tominaga For ASUI President

Book Review

Leon Uris's *Trinity*

By DON WILLIAMS

"... only you know, Seamus, nothing ever happens here in the future. It's always the past over and over again."

"Trinity" is the story of an Irish man and his family. Conor Larkin is a man fighting his destiny and the Irish dream of liberty. Leon Uris depicts Larkin as a rebel trying to live a "normal" life in a land where the descendants of the original natives are treated as second class citizens.

In writing this book, Uris had the entire history of Ireland after King James conquered the island to use as the

background for the story because his major theme throughout was the fact that the British mistreated the people and the land of Ireland.

The conflicts in Ireland have always had the same cast of characters, only their names were ever different. In this case, there is the Larkin family, ancestors of the original Irish natives who are traditionally Roman Catholic.

Then there are the MacLeods, Anglican descendants of their Protestant forebears who were uprooted from their native home in Scotland and resettled in Ireland. The last

side of the triangle, the representatives of the British aristocracy, the Hubbles, claiming the Earldom of Foyle, whose ancestors chanced a move to Ireland to exploit and colonize the land.

Seamus O' Neill, a friend of the Larkins, narrates most of the story, as Uris attempts a lesser degree of his usual omniscient style. In this book, he writes in a different form, one that seems to be popping up and more, which is similar to the one Kurt Vonnegut used in "Slapstick." This has a startling effect on the book; it hides the transitions between O'Neill's narrations and Uris' traditional style. O'Neill is Conor Larkin's boyhood friend, the author portrays his emotions and

character well as he is growing up. Another problem that Uris approaches well in all of his books is writing around the protagonist while still giving the reader an understanding of the character.

The book is a fictional history of Ireland from the years 1880 to 1916, giving also an account of the earlier years in the 19th century. Not only is the book well written, but it should also give someone who knows little or nothing about it an idea as to why there is so much turmoil in Northern Ireland today. It could also inspire. Uris reveals much of the spirit of Ireland, the ambitions of the people resettled from Scotland, and the conniving of the British aristocracy and government.

sold by owner

When I was a servant
I lived in a great big
rut
and I decorated it
beautifully
nicer than everyone
else's
rut
and I received good wages
and people thanked me
for the good things
I did
and then one day
I left my
pretty and tastefully
done
rut
and all of the
things that kept me
in my rut
such as
my pretty uniforms
and collections
of rut fillers.

I left to
become a
slave.

Once I was a slave,
I was wholly
unrepressed.
I was given a Home
and I was liberated
from rut dwelling
and rut keeping.
I received no wages
and almost never
a thank you
but here's
the difference:
in the past I always
stood outside
waiting for leftovers
from the King's table
but now
I sit beside Him!
(His slaves
are His friends.)

CROSSROADS
BOOKSTORE

by permission
Creation House
Marie Chaplan
MIND THINGS

Dozier to speak

The life, philosophy, and theatrical milieu in which the Italian playwright Luigi Pirandello wrote will be among the topics covered in a lecture to be delivered by Richard Dozier this evening.

Scheduled at 8 p.m. in the Theatre Art's U-Hut, the lecture is featured as a special introduction to the University of Idaho Theatre's production of Pirandello's "Six Characters in Search of an Author," opening Thursday evening at the PAC.

As assistant professor of English, Dozier has taught

numerous modern drama courses which have included plays by Pirandello. Modern literature is his area of specialization.

Well-acquainted with the world of the theatre as well as that of literature, Dozier was resident director of several theatres while teaching in the past. His undergraduate days included participation in numerous dramatic productions, also.

Open to all interested persons, the lecture is free of charge.

KUID-FM PROGRAM HIGHLIGHTS

Album Previews; every night at 7 p.m.
Tues. Nov. 16 - Phoebe Snow "It Looks Like Snow"
Wed. Nov. 17 - Pure Prairie League "Dance"
Thur. Nov. 18 - Ray Charles-Cleo Laine "Porgy and Bess"
Fri. Nov. 19 - Joan Baez "Gulf Winds"
Sun. Nov. 21 - Little Feat (artist revue)

Pacifica Programs: Every Sunday at 6 p.m.
Sun. Nov. 21 - "Pete Seeger on Music, Ecology and Committees;" The singer-songwriter-conservationist-talker and generally interesting human discusses current interests and sings a couple of songs.

Podiatry Associates, Chartered

Drs. Watling & Cox
Announce New Moscow
Office Hours

Wed. 8-4 Thurs. 12-4

308 South Jackson

882-3513 or Lewiston, 743-2091



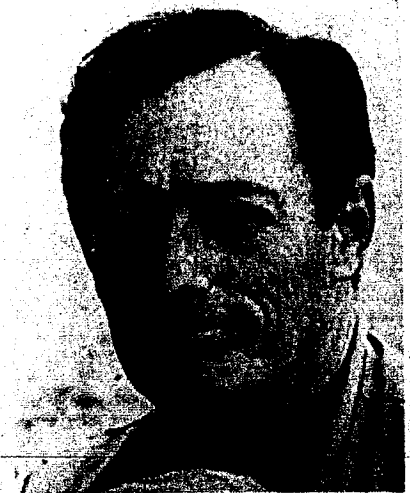
Limbaugh

For President ☐

ASUI ISSUES AND FORUMS
PRESENTS

REID
BUCKLEY

Author, Social & Cultural Critic



Nov. 16, 8:00 pm

SUB Ballroom

Topic: "It's Been Nice;
Where Do We Go From Here?"



TED COWIN
Photo Supplies:
 Film, Flash Cubes, Chemicals, Paper,
 Projector Lamps
 Film Developing and Printing
Photo Finishing
Is Our Business

Letters

Popular choice

To the Editor:

There is a man running for the ASUI vice-president position that should be the popular choice of the voters; that man is Scott Allen.

Scott is currently ASUI Promotions Manager. If you wonder why you might not have heard of Scott much before this time in the campaign, it is because Scott has been busy doing the job he now has. What can be said against a man who has the conviction to finish the job he has already got? Not much, I suppose. Scott Allen has shown that he can and does work hard to keep the students informed of the various activities of the ASUI.

Scott Allen has seen the ASUI from the working standpoint, and is well aware of the lack of communication between the student voice and the actions of their student government. Scott believes that one of the remedies would be to institute a weekly or bi-weekly newsletter from the office of the ASUI Vice-president. Scott, having experience in

this field, would probably be the best choice for this type of remedy.

Scott Allen has many more ideas that were wrought from the voice of experience. Scott Allen has straightened out the ASUI promotions office and would straighten out the ASUI Vice-president office if he had the opportunity.

This letter could go on for a long time about Scott's accomplishments and abilities. But being a firm believer in the ability of the voters to pick the man of their choice, through intelligent decisions, I believe that if you research the issues and the candidates you too will be convinced that Scott Allen is the popular choice.

Please vote on Nov. 17 and vote for experience; vote Scott Allen for ASUI Vice-president.

Tom Raffetto

Action person

To the Editor:

In the upcoming ASUI elections I feel we need to elect a president who is a person of action. The

students of the University of Idaho are disgruntled with increased fees, negligent reapportionment of existing funds, and a generally complacent student government that follows where led by the existing administration and regents. No president can change all the inconsistencies which exist in our present student government. However, the man that can do the most, for the most, with the least is Mark Limbaugh.

Mark is a distinguished ASUI Senator who has earned a name for himself through his constant efforts at budget reduction and student view expression. Recently in Senate Resolution a46, concerning the controversial parking proposal, he moved to strike the clause which stated that all extra money collected would go to pay the police contract with the city, rather than pay for the improvements to the parking lots. He's watching out for your money! He introduced Senate Resolution 51 which voiced student and Senate opposition to the recent change in the pass-fail

(Continued on page 11)

The Following Concerned Students Strongly Support

Mike Gallagher For ASUI President

Paul Vassalotti-McConnell Hall
 Bill Oliver-Upham Hall
 Hugh Grimbolby-Snow Hall
 Kevin Sharrai-Whitman Hall
 Kevin McMahan-Willis Sweet Hall
 Christy Johnson-Campbell Hall
 David M. Ritchie-Off Campus
 Douglas T. Madsen-Delta Sigma Phi
 Roger D. Clubb-Kappa Sigma
 Pat Kora-Alpha Gamma Delta
 Kim Rogers-Delta Delta Delta

Reagan Hesse-Gamma Phi Beta
 Rich Kaufman-Sigma Alpha Epsilon
 Kathie Emerson-Alpha Chi Omega
 Vicky Adams-Kappa Kappa Gamma
 Fred Schorzman-Delta Chi
 Mark Harris-Sigma Nu
 Lynn Chetwood-Pi Beta Phi
 Kurt Daw-Farmhouse
 Linda Pattison-Alpha Phi
 K.C. Knight-Spurs
 Dave Lockhart-Younglife

Mike Wilson-Pi Beta Sigma
 Bill Pruitt-IK
 Thomas Baskin-IFC
 Bob Faber-Jazz Choir
 Jed Jedaudoin-University Relations
 Greg Harrie-SARB
 Craig Heitman-Blue Key
 Bob Wolpert-Phi Eta Sigma
 Steve Gano-Alpha Phi Omega

...
"These are only a few"

they care that an experienced hard working student
is elected ASUI President

Join them November 17 and vote

Mike Gallagher - ASUI President

by the concerned students for Mike Gallagher ASUI President

option. He's expressing your views! Besides being a member of the ASUI Senate-student fee committee he is a former chairman of the Senate Government Operations and Appointments.

On November 17 if you care about your money and who is hoping to try to keep in proportion to what you obtain for it, get off your apathy and vote with intelligence for Mark Limbaugh for ASUI President.

Charlie Powell
President, Shoup Hall

Senate choice

To the Editor:

Adequate student leadership is needed at the University of Idaho in the face of possible fee increases. The students need an ASUI President with the experience and expertise to strongly communicate with the legislators, Board of Regents, Administration, and faculty members on the current financial needs of The University of Idaho.

Gary Kidwell is that person. Through his experience as a former ASUI senator, liaison to the Executive Board of The University of Idaho Alumni Association, The Legislative Action program, and

lobbying for higher education Gary Kidwell has the background for the communication that is needed.

Elect an ASUI President that will represent all of the students at The University of Idaho. Vote Gary Kidwell for a strong voice in the ASUI President's office.

Keith J. Coffman

And still more

To the Editor:

We the undersigned hereby support Lynn Tominaga for the office of President. We believe that Lynn will listen to students and act accordingly to the wishes of the students.

17 U of I hall officers

The Argonaut welcomes and encourages expression of opinion from its readers through the Letters to the Editor column. All letters must be signed in ink; a typewriter signature is not sufficient. Otherwise, the letters will be returned unpublished. Names may be withheld upon request if the editor decides there is a valid reason to do so.



Limbaugh

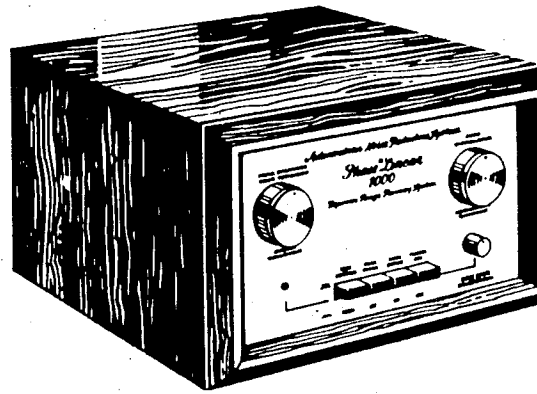
For President

RE-ELECT

RUSTY JESSER

ASUI SENATOR

Did you know that 90% of the noise that plagues your records, tapes, and FM can easily be removed? The Phase Linear 1000 does exactly that.



Phase Linear 1000

Tape hiss and other background noise become a thing of the past with a Phase Linear 1000.

The Phase Linear 1000's exclusive Autocorrelator circuit removes up to ninety per cent of the noise—primarily tape hiss—that plagues your favorite records, tapes, or FM broadcasts. It also removes hum and turntable rumble.

At the same time, the Phase Linear 1000's Dynamic Range Recovery System makes loud

passages louder, and soft passages softer, thereby restoring drama and impact to your favorite music.

The Phase Linear 1000 improves the performance of any stereo system. It's easily connected to any receiver or amp/preamp combination, and is simple to operate.

Come in and let us show you how the Phase Linear 1000 can increase your listening pleasure!

STEREOCRAFT
S. 306 GRAND, PULLMAN 567-5922



**WARREN MILLER'S
NEW FILM!**



"SKIING ON MY MIND" BY WARREN MILLER

FEATURE LENGTH SKI FILM

Taking Viewers to the Austrian Alps; Snowbird, Utah; Sun Valley and many others.

WSU PAC THEATRE
Nov. 17, 8:00 pm
All Tickets \$3.00

Tickets Available At:
WSU Performing Arts Coliseum
WSU CUB Listening Lounge
Paradise Records and Plants

Hey ...it's A Kentucky Fried Chicken Day!!

DINNER SPECIAL

*2 pcs. Kentucky Fried Chicken

*Mashed Potatoes and Gravy or Cole Slaw

*Hot Roll



Have You Tried Our Delicious Hamburgers



Colonel Sanders Recipe

Kentucky Fried Chicken®

Pullman
S. 1020 Grand

Moscow
W. 310 3rd



FAST FOR A WORLD HARVEST NOV. 18

Once again University of Idaho students, faculty/staff and townspeople are called to participate in the Thanksgiving Observance of remembering the world's hungry by a day of fasting and contributing the money for those uneaten meals to Oxfam-America. The cost of these meals will be each person's share in increasing the world's harvest. The Thanksgiving Observance will be held Thursday Noon from 12-1:00 p.m. at St. Augustine Center and is sponsored jointly by the Campus Christian Center, St. Augustine Center, and the Moscow Ministerial Association. The offering will be forwarded to Oxfam-America to support self-help projects in the developing world such as water storage, better seeds, improved livestock management, and agriculture extension services.

Persons unable to attend and wishing to contribute may send/bring checks to the Campus Christian Center, 822 Elm St., where they will be forwarded on to Oxfam.

Each year the rural people, who make up most of the earth's population, produce more than a billion metric tons of grain. Each year the crop is eaten. Yet the Rome Food Conference estimated that there are 460 million severely malnourished people in the world, and projected the total to increase to 750 million by 1985. Death rates are again rising in several developing countries, with malnutrition probably the main cause. Why? People eat what they can afford and the poor are increasing in number. Crop failure, skyrocketing oil prices, continuing population growth, worldwide inflation,

unfavorable trade patterns and the profiteering of elites all contribute to poverty as well as to food costs. Poor families in the less developed countries spend up to 80 per cent of their income for food.

In North America, where the average farmer can feed 46 people besides himself, people usually think of small-scale labor-intensive farms as inefficient. This is true where labor is scarce and capital plentiful. But in poor countries, where capital is scarce and labor plentiful, new seed varieties, adequate water and improved implements, combined with hand cultivation, can result in dramatic yield increases. When coupled with land reform, access to credit, education and marketing cooperatives, small farmers have equaled or surpassed per acre production on this continent.

The Following Students

Bob Stewart
Jenyce Goodwin
Brad Waughtal
John Robinson
Anne McGough
Robyn Keough
Jode Hopkins
Mike Darnell
Brenda Nagasaka
Michele Burton
Jim Shek
Ed Tittler
Bryon Elliott

Bob McDonald
Kay Kemp
John Beck
Gary Balfour
Janis Weidner
Joel O'Donkor
Paula York
Robin Smiley
Robert Coug
Becky Eckhardt
Tati Garcia
Nick Brunelle
Jennifer Lehn

Katherin Abts
Kurt Kroll
Phyllis Ramseyer
Terrill Furey
Tom Falash
Tom Limbaugh
John Peterson
Glen Gearhard
Mark Gordon

Tom Trevino
Tom Wilcomb
A.D. Weaver, III
Pat Ryan
Doug Racine
Darrel Perry
Scott MacButch
Dave Parker
Jan Schiller

Judi Johnson
Cherie Lawrence
Richard Brown
Bill Fonshill
Dan Dorman
Renee Brickner
Jill Patton
Marly Davis
Lindsey Harris

Bill Davis
Jim Carlson
Richard Kiser
Jim Brennan
Kurt Culp
Dave Thompson
Tarl Olason
Rod Zwainz
Jim Freeman
Tom Zwainz
John Wilson
Jeff Hosking
Steve Davis

Dale Hayden
Greg Jensen
Don Mendiola
Doug Porter
Bart Greene
Bret Hogge
Pat Patterson
Doug Griffin
George Poulos
John Bevan
Greg Brooks
Ed Button
George Katsilometes

Support

Limbaugh

For  **ASUI President** 

Paid for by the students listed above

Canadian images here through next week

By BILL LOFTUS

There's a Canadian flag in the front lobby of the library. And since early in the first week of November, the Canadian envoys have been grouped down in the reserve book room where they successfully supplanted the U.S. Representatives. They are expected to occupy the reserve room until Thanksgiving. Theirs has been a beautiful rather than a bloody revolution, however.

For too long now, the U.S. consciousness has regarded the only artists of any quality to be those of U.S. or European origins. The most popular Canadian artists in the U.S. for the last decade have been musicians who are sometimes not given credit for the artistry they portray. Joni Mitchell, Neil Young, Gordon Lightfoot, and the Guess Who are all from Canada. About the only other Canadian to achieve widespread acknowledgement by the U.S. public is Farley Mowat, who wrote the popular, semi-scientific book on wolves called *Never Cry Wolf*.

But wait. Who are the Canadian envoys and what

they doing here? "They" are a collection of black and white and color photographs by "Canada's leading photographers." The exhibition is entitled "Canada: Year of the Land." It was first presented as part of Canada's 1867-1967 centennial. The exhibit has been travelling in the U.S. to help acquaint the people with some of the beauty and robustness of Canada. The exhibit also serves to give the Canadian photographers some much deserved exposure. The exhibit is sponsored by the National Film Board of Canada.

The showing is currently on the Pacific Northwest swing of its national tour.

It visited the University of Washington and the University of Montana before coming here and is expected to go to either Puget Sound University or Portland State University. After that showing, the exhibit will be to the Midwest, around January 1.

The Canadian government is completely covering any costs that the showing necessitate. They reimburse the university for all

transportation costs and for any required modifications of the gallery area. A new hanging system had to be arranged in the reserve book room where the old watercolors were taken down. The Canadians paid the expense of the new wire cable to hang the Plexiglas-framed prints on.

The exhibit contains 85 pictures about eighty per cent of which are in color. There is only room for about 55 to be shown at one time. The remaining 30 will be rotated with the ones that have been up for some time. John de Visser and Freeman Patterson dominate the selection of color prints that are currently on display, but there are many other photographers in the display.

Maybe with more exposure to the Canadian art like this, Americans will come to think of their own art, and that from the northland, as North American Art.

Idaho musicians to appear

Two well known Idaho musicians will appear as soloists with the Idaho Chamber Orchestra in concert tonight at 8:00 pm in the Recital Hall of the Music Building.

Conductor of the ensemble, LeRoy Bauer, has billed this as a "Baroque Concert," with Dorothy Barnes, soprano, and Richard Werner, trumpet, as featured soloists in a rarely heard performance of J.S. Bach's Cantata No. 51.

Ms. Barnes, assistant professor of voice, has been a soloist with the Spokane Symphony, and this season will appear with the Billings and Bozeman, Montana orchestras and with the Boise Philharmonic. Werner, assistant professor of trumpet, has made appearances with the Denver and Spokane Symphony orchestras, as well as the Boise and Idaho Falls symphonies.

The Idaho Chamber

Orchestra is a select ensemble of 12 strings and harpsichord, and performs a major concert each semester from the wide range of Baroque and 20th century music written for the small orchestra. The group has appeared in concert in various parts of Idaho, most recently at the Fine Arts Festival at North Idaho College, Coeur d'Alene, and has twice performed at the Governor's Conference On The Arts. Locally the versatile group is also well known for its popular repertoire as it is in demand to entertain for special events such as the annual faculty-staff dinner-dance in December.

Also included in tonight's concert will be the "Autumn" Violin Concerto from "The Seasons" by Vivaldi with Robert Burroughs, senior from Pasco, Washington, as violin soloist.

The public is invited to attend without charge.

**TACO JOHN'S
WEDNESDAY
SPECIAL
3 TACOS 97¢**

TACO JOHN'S
Open 11 am-1:30 pm

RESUMES

Professionally
typeset
and
printed

\$6.50 for 50
ASUI

Production Bureau
885-6371

ALL INTERESTED STUDENTS

Organizational Meeting

for

High School Recruitment Parties

Thursday, Nov. 18th

6:30

Galena Room
Gold

Not just an ad Not just a poster Gary Quigley listens...

...Gary has visited and answered questions in 45 living groups... and he's still going. No other candidate has demonstrated this level of concern.

His concern is only one reason the following living group presidents and other students have endorsed Gary Quigley for ASUI Vice-President:

Paul Vassalotti, McConnell
Mike Bowe, Alpha Kappa Lambda
Tami Turner, Alpha Chi Omega
Mark Holsteen, Borah
Mark Vedder, Chrisman
Don Hite, Gault
Katherine Richter, Campbell
Rory Jones, Delta Tau Delta
Mike Rush, FarmHouse
Gary Bailey, Lambda Chi Alpha
Scott Larrondo, Lindley
Lynda McManamon, Olesen
Judy Colton, Hays
Janet Schaeffer, Forney
Lynn Miller, Houston
Charles Powell, Shoup

Gary Mong, Snow
Julie Garatea, Steel House
Richard Kaufman, Sigma Alpha Epsilon
Ed Moilanen, Tau Kappa Epsilon
David S. Foster, White Pine
Scott Boutilier, Willis Sweet
Judy Harper
Danette Golis
Jim Funk
Tom Grubb
Rob Mitchell
Jeff Jones
Debbie Westbrook
Curt Johnson
William Lyon
Cheryl Rasmussen

Rex Hanson
Kevin Hoyer
Tony Suveg
Tracey L. Leavitt
John Rupe
Willa Sancarty
Annette Cary
Sherri Martin
J. Ernest Monroe
Rosean M. Brausen
Nancy Kimberling
Rocky Bishop
Bruce Voss
Bill Oliver
Dudley Foster
Jim Redinger

Gary
Quigley

ASUI Vice President

Candidates make final moves

(Continued from page 3)
ASUI politicians can also be effective in improving the public relations of the school.

Bradbury intends to work against student fee increases and for changes in the school's alcohol policy, which he calls "archaic."

Off campus students deserve better representation, according to Silva, who said she would work for better funding for the university library and reform of the alcohol policy.

Parkinson mentioned the Blue Mountain music festival in his campaign, criticizing President Ernest Hartung's decision to cancel the event, and saying U of I money paid to the local police should not have been used to write a report condemning the festival.

Arnold also stressed the school's relationship with the legislature, saying students should be encouraged to lobby for better funding while commenting that fees and fines from within the school could be used to better such facilities as the U

of I library

Although he supports student lobbying before the Idaho legislature, Prohaska also called for attention to be paid to the school's Board of Regents.

McClure also supports student lobbying and says senators should be encouraged to represent the entire student body, rather than push for the programs of a few individual senate members.

In addition to funding for students' legislative action programs and improvements to the library, Pilon says the ASUI should give more attention and funding to women's programs on campus.

Beer on the school's golf course and funding of more programs on campus have been stressed by Johnson, who contends the course could come closer to self sufficiency with a liquor license and the recreation board should be encouraged to give money to more diverse groups.

On the ASUI Fall General Election ballot, along with the twenty candidates, will be two referendums proposing changes in the ASUI constitution and one survey question about the site of the old field house.

The first referendum,

originally proposed by ASUI President David Warnick, will give the ASUI president right to submit budgetary recommendations for the "student activities fee, student union operations fee, marching band fee, ASUI recreation fee, and such other fees as may be provided." It will also give the ASUI Senate authority to approve the budget for the above items.

"What it does," explained ASUI Vice-president Jim Manning, "is make it more explicit that we have control over the SUB budget." In an earlier interview, Warnick said that it was the intent of the authors to include the SUB as part of the ASUI and evidently it had left doubt on the part of the administration.

University President Ernest Hartung said, in a letter to Warnick, that he agreed with Financial Vice-President Sherman Carter's stand on the ASUI's taking control of the budgeting of the SUB. In a memorandum the same week, Carter said that the then Senate Resolution No. 49 would place money budgeted under Services and Buildings, a total of \$36.50 per student per semester (not including the money already budgeted by the senate) under the control of the



SCOTT ALLEN



GARY QUIGLEY

senate. "The ASUI Senate could have no discretion over these funds, since they are committed to cover bills that the Regents are obligated to pay," he explained.

Carter recently said, "I feel there is a certain problem and danger" in presenting the referendum before the students the way that it has been presented. They have been given little information about it, Carter explained, before the senate passed it on to the ballot. He states that the University president is responsible for all university buildings and therefore must control the funding for them. In the letter to Warnick, he said, "... we tell you once every six months that the University Administration is going to continue to control the position of Manager of the SUB..." Some of the money is used to pay off the indebtedness to the SUB buildings and remodeling.

The second referendum, originally submitted by Gary Kidwell, will reduce the percentage of full-time students to petition for a recall election. The number

now needed is 1,320 or twenty per cent of the U of I's 6000 current full-time student population. With the passage of the referendum, and passage by the Regents (all constitutional amendments to the ASUI Constitution must be approved by the Board of Regents), then it will require only 330 full-time student signatures to initiate a recall election. This is handy for students who never see their senator or don't even know who he or she is.

The survey question on the ballot asks whether or not the students want: 1. expansion of the arboretum; 2. tennis courts; 3. a parking lot; or 4. a band shell. In talking with Carter, he said that 80 acres has been set aside for expansion of the arboretum. He also added that building something on the site would take at least another two or three years and there has been no study into the probable costs, the students then could hope for no action on the question readily. Warnick was not available for comment.

Micro Movie House
220 W. 3rd, 882-2499
Single Feature \$1.75
Double Feature \$2.00
Opens 5 p.m.

Ryan O'Neal
Marissa Bernson
Barry Lyndon
Nov. 16 6:30 & 9:00

Peter O'Toole
Catherine Hepburn
The Lion in Winter
Nov. 17 & 18
5:00 - 7:40 - 10:20

RESEARCH
Thousands of Topics
Send for your up-to-date, 160-page, mail order catalog. Enclose \$1.00 to cover postage and handling.

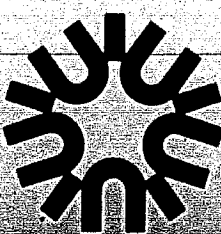

RESEARCH ASSISTANCE, INC.
11322 IDAHO AVE., # 206
LOS ANGELES, CALIF. 90025
(213) 477-8474

Our research papers are sold for research purposes only.

TACO JOHN'S
WEDNESDAY
SPECIAL
3 TACOS 97¢

TACO JOHN'S
Open 11 am-1:30 pm

Limbaugh

For  **ASUI President** 

Macklin

FOR THOSE OF YOU WHO WERE AWAKE OR SOBER LAST FRIDAY WE POSE A SMALL QUESTION: WHERE WERE YOU WHEN THE LIGHTS WENT OUT?

$f(x+0) = x^5 [(3+5z^3) + C_n - 1]$
UNLESS $C_3 = 0$ OR ≤ 1

CHRIST?
CHECK
RIGHT
FINE
ROGER
OK

WASHINGTON WATER POWER CO. SAID THE BLACK-OUT WAS CAUSED BY A BLOWN TRANSFORMER ...

BUT W.W.P. OFFICIALS COULDN'T FIGURE WHAT BLEW OUT THE HUGE TRANSFORMER

EVIL SPIRITS

PROMISE!! ROSCOE....
OK, OK ... I'LL GIVE UP ON MY BIONIC AARD YARK PROJECT

MACKLIN HOME
SWEET MISSILE BASE

by mood

Classifieds

5. TRAILERS FOR SALE

For Sale: 1969 12 x 65 mobile home. Skirted, set on lot. Washer, dryer, A/C, all electric. \$5,000. 882-3201 after 5. Anytime weekends.

7. JOBS

Part-time police officer. Must have high school diploma and be 21. Additional education or experience desired. Contact Randy Thies, Pottlatch Police.

8. FOR SALE

THINK STEREO THIS CHRISTMAS. Check out these prices: Bose 301: \$81 each, Marantz 1070: \$200. I represent a newcomer to the field of stereo retailing. We want to give you **mail order prices with personal service**. Check around, get your best price on any brand of stereo equipment, then call or come see me. I can beat your price. George White, Krasco Stereo Inc. Representative, Room 1013, Chrisman Hall. 208-885-6066. All orders can be shipped C.O.D.

Snow tires as low as \$21.95. 6:30x13. One week only special! FREE STUDS with purchase of snow tires. 320 W. Third, Phillips 66, 882-3555.

Two mounted 8:24x14 studded snow tires on Datsun pickup wheels. \$50. 882-4191 evenings.

Beautyrest double bed mattress \$20. 882-4191. Evenings

Three mounted, 6:00x12 tires. Excellent rubber. 4-hole '71 Toyota wheels. One: \$20. Three: \$50. 882-4191 evenings.

Think Stereewood! Now on special: KLH 5 speakers list \$225, now \$120. Kenwood amplifier 70 w/chan \$225. Save 25%-60% on 100+ brands. Infinity, Ohm, Cerwin, Vega, Advent. More! Prices include shipping. Call Stereewood. 885-7512.

11. RIDES

Riders wanted for Christmas trek to Minnesota. Scott Plaisted 885-7562.

Flying to L.A. for Thanksgiving. Looking for interested persons to share expenses of private charter Nov. 19-27. Costs? Lower than driving! Call 882-8681 for information.

12. WANTED

Male graduate student needs place to live in/near Moscow for spring semester. Medium-sized dog. Call 332-8352.

14. ANNOUNCEMENTS

Palouse Hills Soaring Club is opening membership to those interested in learning to fly gliders. For more

information, come to Lincoln Savings Building in Pullman, or call (509) 568-8354.

Students are invited to utilize the Vocational Library at the Student Counseling Center in conjunction with their career planning. A special section emphasizing the opportunities for women has been developed. Career, personal, and marital counseling are also available to all students and their spouses free of charge. Come to UCC 309 or call for an appointment at 885-6716.

Comfort Zone is the **BEDDER PLACE** for water beds and accessories, remember, we're the water bed professionals with a brand new store on the WSU campus. 1000 Colorado, Pullman--322 Main Street, Lewiston.

RE-ELECT

RUSTY JESSER
ASUI SENATOR

Elect Scott Allen for ASUI Vice-President

Endorsed by these leaders:

- Greg Miller -ASUI Senate Candidate
- Stacey Silva -ASUI Senate Candidate
- Mike Ayersman -ASUI Senator
- George Ambrose -ASUI Senator
- Tom Raffetto -ASUI Senator
- Jim Manning -ASUI Vice-President
- Andy Brassey -ASUI Attorney General
- Tarl Olson -ASUI Senator

A vote for Scott Allen is a vote for Experience



A TREE GROWS IN MOSCOW

The Magic Mushroom Specials Tree sprawls new leaves every day.

Treat your ears to sounds your pocketbook will like! Or, relax on a waterbed and let it flow....

Come by and find all manners of delight for your ears and points between.

MAGIC MUSHROOM — 6th & MAIN — MOSCOW
OPEN SUNDAYS 882-8569

Events

TODAY

...Noon at the Women's Center: performance by Ellen Zoltak, feminist songwriter and singer.
 ...There will be an Election Board meeting at 4:30 pm. in Ee-Da-Ho Room, SUB.
 ...Palouse Hills Soaring Club membership, organization and information meeting, 7 p.m. at Lincoln Savings Building, across from Pullman Greyhound station.
 ...Another presentation of Issues & Forums--Reid Buckley (author, cultural and social critic) on 'It's Been Nice! Where do We Go from Here?' 8 p.m., SUB Ballroom.
 ...MECHA meeting at noon, recruitment of new students will be discussed. Tortillas and frijoles will be served. The movie 'King of the Hill' will be shown and discussed. Faculty Office Complex B-13


TOMORROW

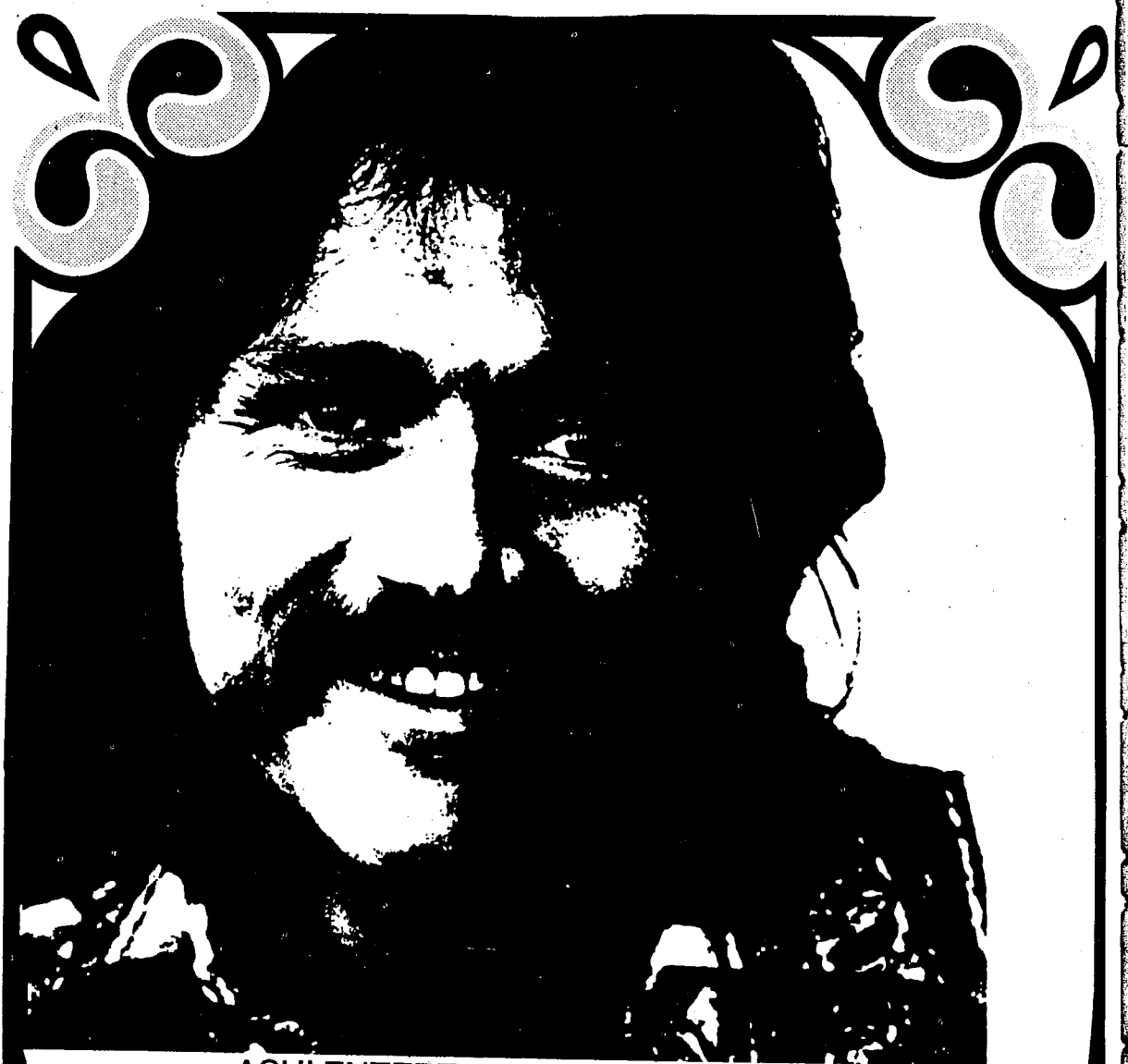
...Noon at the Women's Center: Karen Kinsey will do dramatic readings 'On Being A Woman.' The Women's Center is now open on Wednesday evenings from 7 p.m. to midnight.
 ...U of I Baha'i Club meeting, noon in SUB Russett Room. Lecture series discussion and planning.
 ...Orienteering Club meeting to discuss results of Oregon meet and purchase of equipment. Please bring dues. 7 p.m. SUB Pend Oreille Room.
 ...Architecture 155 meeting concerning campus environment and the future of University Avenue, SUB Galena Gold Room, 8 p.m. Numerous faculty have been invited and the grad arch. students who started this will be there. Everyone is invited.

THURSDAY

...Juntura Committee, noon at the SUB (room to be announced).
 ...Friends of the Environment sponsors a program on research in the Idaho Primitive Area and also about Big Creek and U of I's Taylor Ranch Wilderness Research Station. Noon, room will be posted in the SUB.
 ...Organization meeting for Single Parent Group--noon at the Women's Center.
 ...German 'Kaffeeklatsch'--German conversation, refreshments and two short German films: 'Deutschlandspiegel' and 'Schaferlauf in Markgroningen'. 4 p.m. at Campus Christian Center.
 ... There will be a meeting of NFSE outgoing Spring exchanges. It will be a last get-together to discuss problems on questions you may have concerning your exchange. Please plan to attend!! 7 - 8 p.m. SUB Cataldo Room. There will be a meeting of the NSE Alumni to discuss future meetings and things we would like to do. 8 - 9 p.m., Cataldo Room.
 ...Palouse Audobon Society slide presentation. Mr. Ivan Lines of the Soil Conservation Service on 'Impacts of Stream Channelization.' Room 301 Life Sci. Bldg., 7:30 p.m.
 ...Women In Communications, Inc. panel on 'Sexism in Media Employment', 7:30 p.m. SUB Appaloosa Room. Open to everybody.

DON'T FORGET 
 Special Discounted Airfares
 Still Available for Holiday Travel
 SEE
TRAVEL BY THOMPSON
 FOR THE BEST BUYS IN TRAVEL

 **ASUI**
Limbaugh
 For President



ASUI ENTERTAINMENT PRESENTS
IN CONCERT

**JESSE
 COLIN
 YOUNG**

WITH VERY SPECIAL GUEST

RY COODER

AND HIS CHICKEN SKIN MUSIC

WEDNESDAY Dec. 1st 8 p.m.

KIBBIE THEATRE (No Smoking or Alcohol)

ALL TICKETS RESERVED

Limited Quantity \$4⁵⁰ and \$5⁵⁰

TICKETS ON SALE TODAY

Tickets available at:
 SUB
 Paradise Records
 Magic Mushroom