

# Argonaut



It never rains in California, but... northern Idaho has had its share in the past three days. Photo by Rick Steiner.

## Contingency budgets released

by John Hecht

Five different contingency budgets, each based on the current fiscal year operating levels, were released by University of Idaho President Richard Gibb Wednesday evening. The budgets were prepared under directives from Idaho Governor John Evans and U of I Board of Regents.

The five budgets indicate there would be drastic cuts in all levels and all phases of the university. They were prepared in the eventuality of the passage of the "One Percent Initiative," a property tax limitation which will be on the ballot this November. The Governor said earlier this year that passage of the measure would decrease tax revenues about \$140 million.

Evans requested in July all state agencies to prepare a contingency budget reflecting a 30 percent reduction from the current fiscal year. That figure is based on the estimated decrease in funds. At its July meeting, the board directed the institutions to prepare for it budgets of 100, 95, 90, and 85 percent, in addition to the governor's 70 percent.

The reductions are to be made in areas in which there are state funds supporting the programs. There was little notice given to those areas where all or the majority of support comes from student fees. To be considered "self-supporting," a program must

have no state funding. However, students fees are not considered as state funds.

The proposed "100 percent" budget is equal to the current year, but the report points out that because of inflationary costs there is actually a reduction of \$3 million available to the university. Normally, the university requests a Maintenance of Current Operations (MCO) budget which provides for dollar increases to match cost of inflation and mandated salary increases.

At the current dollar level, the report says present institutional operations will need to absorb the impact of inflation. This would affect all programs throughout the university.

To get the \$3 million, the report says various programs would be eliminated or cut back. In academics, the list is headed by Summer session, which serves about 3,200 students. In non-academic areas, the hit-list says most of the service programs would be eliminated and/or supported by user charges to the "maximum extent possible." These programs include Student Advisory Services, the student counseling center, career planning, and minority programs. Also on the list to go are alumni records, sections of publications/news bureau, affirmative action, the development (fundraising) office and university relations. The physical plant services

would be cut back and varsity baseball would be taken out.

### 95 Percent

Each 5 percent cutback would require the reduction of \$1.1 million more. Further reductions in physical plant services, central administration, and the news bureau would follow. Out-of-state tuition waivers for "several selected sports" would be made. Academic areas would include faculty and staff cutbacks in the College of Letters and Science, support funds for laboratory programs in agriculture, and faculty in education, engineering, forestry, law, mines. Book and periodical expenditures for the library would be reduced

### 90 Percent

All financial aid for sports except for football and basketball would be removed. A total of 25 faculty positions, 21 staff positions, and 57 graduate assistants would be reduced. "The impact of these reductions falls heaviest on research and graduate programs," the report said. The U of I's research capability would be "severely handicapped" and a number of the faculty would probably go elsewhere. As the graduate program shrinks to a minimum level, most of the outside money for research would be lost. The loss of the money would "adversely affect" the accreditation of many programs. Colleges in

(continued on page 2)

## Regents postpone decision on proposed \$29 fee increase

by Marty Trillhaase

BOISE—The Board of Regents yesterday postponed for another month its decision on a proposed \$29 per semester student fee increase.

The move reflected the Board's decision to assess more fully student opinion on the subject. Hearings on the increase were conducted in Moscow Tuesday.

If approved, the increase would raise the current uniform student fee to \$248 beginning next fall. Those increases would be:

—a \$10 fee increase in the student facility fee. That would double the total of student dollars used for facility maintenance. Under the administration's current proposal, the bulk of the new funds would be earmarked for

such facilities as the Memorial Gym and the ASUI Kibbie Dome.

—a \$2 increase for intramural staff salaries. Those salaries will no longer be financed through the General Education Fund.

—a \$5.00 increase for women's intercollegiate athletics. Title IX which went into effect July 1, requires equal funding for men's and women's athletics. The increase would enable the university to comply, the administration's proposal says.

—a \$6.50 increase for the student health center. The increase would cover higher utility rates as well as the cost of a recently hired clinical psychologist.

—a \$5 increase for Student Union operations. The

justifications given here are inflationary factors.

—a fifty-cent increase for ID cards. This would cover the cost of repair and replacement of equipment.

ASUI President Bob Harding voiced opposition to the bulk of the increases. He took strong exception to the \$10 student facility increase. Harding said the administration must itemize and list priorities for facility projects before proposing additional facility fees. He added there are "a number of questions" concerning what facilities student fees should cover.

He opposed the Health Center increase, saying staff rather than doctors could handle several medical areas. He also questioned the need for a clinical psychologist.

Harding noted the ASUI Senate has gone on record supporting the intramural and women's intercollegiate athletics increase. But Harding said the state should match student funds dollar for dollar for intercollegiate athletics.

University of Idaho President Richard Gibb indicated some fee increase must be approved or an equal amount of funding will be cut. He agreed some type of priorities could be established. "But this is one of the matters where you can't have your cake and eat it too," he added.

Regent J.P. Munson of Sandpoint questioned the constitutionality of the student facility fee. The Idaho State Constitution outlaws tuition at

the U of I.

But board executive director Milton Small noted the only conclusive legal decision could come from the State Supreme Court, according to a 2 year old Attorney General's opinion.

That would require a lawsuit, he said. None has been filed. But Small noted the Idaho law is similar to Wisconsin. Semester fees there now top \$400 per semester, he said.

Next month's board meeting is scheduled at Moscow. Harding told the Argonaut student input will be essential to influencing the final decision.

"What will help us is if a lot of people take interest and present their position to the board. That would help us immensely," Harding said.

**You Can Bet You'll Get There**  
with *Dex Bailey*  
**tire & service centers.**

**COMPLETE DRUM BRAKE SPECIAL**

**\$69<sup>95</sup>**

Full Line  
**AUTO MECHANIC ON DUTY**  
During Regular Hours

**Radial Recap**

**Tire Deal**

SIZE	SALE
BR 78x13	\$36 <sup>95</sup>
FR 78-14	\$43.95
GR 78-14	\$49.95
HR 78-14	\$53.95
FR 78-15	\$49.95
GR 78-15	\$50.95
HR 78-15	\$56.95
JR 78-15	\$58.95
LR 78-15	\$61.95

PLUS F.E.T. \$2.20 to \$3.46 and like size recappable casing

**NO BLEMS**

**GENERAL TIRE**

**FIBERGLASS Radial Tire Deal**

SIZE	SALE
BR 78x13	\$36 <sup>95</sup>
FR 78-14	\$43.95
GR 78-14	\$49.95
HR 78-14	\$53.95
FR 78-15	\$49.95
GR 78-15	\$50.95
HR 78-15	\$56.95
JR 78-15	\$58.95
LR 78-15	\$61.95

PLUS F.E.T. \$2.20 to \$3.46 and like size recappable casing

**NO BLEMS**

**CASH & CARRY SHOCK SALE**

Regular Duty most cars **\$6<sup>95</sup>**  
Installation Available

**Heavy Duty**  
Cash & Carry **\$8<sup>95</sup>**  
Installation Available

**Load Levelers**  
cash & carry **\$29<sup>95</sup>**  
Installation Available

**AIR SHOCKS**  
Cash & Carry **\$44<sup>00</sup>**  
Installation Available  
Most cars or pickups

**Tube Type Nylon Cord With Exchange**

BR 78x13	\$36.95
FR 78-14	\$43.95
GR 78-14	\$49.95
HR 78-14	\$53.95
FR 78-15	\$49.95
GR 78-15	\$50.95
HR 78-15	\$56.95
JR 78-15	\$58.95
LR 78-15	\$61.95

PLUS F.E.T. \$2.20 to \$3.46 and like size recappable casing

**Tubeless Nylon Cord With Exchange**

BR 78x13	\$36.95
FR 78-14	\$43.95
GR 78-14	\$49.95
HR 78-14	\$53.95
FR 78-15	\$49.95
GR 78-15	\$50.95
HR 78-15	\$56.95
JR 78-15	\$58.95
LR 78-15	\$61.95

PLUS F.E.T. \$2.40 to \$4.42 and like size recappable casing

**WIDE 60 & 70 SERIES 60 Series RWL With Exchange**

AM111	14.95
AM112	16.95
AM114	18.95
AM115	20.95
AM116	22.95
AM117	24.95

F.E.T. \$2.47 to \$3.56

**LIGHT COMMERCIALS**

**QUALITY HWAY RETREADS**

Light Commercial Heavy Retreads

AM111	14.95
AM112	16.95
AM114	18.95
AM115	20.95
AM116	22.95
AM117	24.95

F.E.T. \$1.50 to \$2.00 with like size recappable casing

AS LOW AS \$5.95  
F.E.T. \$7.5 with Exchange

**Dex Bailey**  
**TIRE & SERVICE CENTERS**

6 MONTHS FINANCING & NO INTEREST O.A.C.

Lewiston, Idaho  
Post Falls

Hayden Lake  
Spokane  
Cheney

Moscow, Idaho  
2305 South Main, 882-5504  
409 West 3rd, 882-3752

# Seven senators make assignments

by Kathy Barnard

The ASUI Senate Wednesday sent a bill to committee which would transfer \$2,800 from the general reserve to the Learning Center for tutorial services.

Only seven senators, the minimum needed for a quorum, attended the meeting. Jeri Ziemann resigned Wednesday, leaving the senate with only eight working members. Juko Wani is still in Africa, according to ASUI Vice President Gerry Wright.

ASUI President Bob Harding urged senators to "recruit" applicants for the vacant senate seats before yesterday's deadline. He also urged senators to encourage students to apply for openings on student-faculty committees.

"We are going to lose positions (on those student-faculty committees) altogether, if they aren't filled soon. I can't emphasize enough how few applications I've received for the openings," Harding said.

The senators worked around their vacancies and assigned chairmen and vice chairmen to three ASUI standing committees.

Linda DeMeyer is chairwoman of the Rules

and Regulations Committee. Matt McLam was assigned vice chairman.

Victor Noble will chair the Government Operations and Appointments Committee. Kerrin McMahan is vice chairwoman.

Juko Wani will chair the Finance Committee, and Rick Sparks is vice chairman.

In other business, the senate approved ASUI governing board assignments. They are:

—Academics Board, Victor Noble.  
—Communications Board, Rick Howard, Linda DeMeyer.

—Golf Course Board, Matt McLam.  
—Programs Board, Kerrin McMahan.

—Recreation Board, Juko Wani.  
—Activity Center Board, Jim Wright.  
—Athletic Advisory Board, Linda DeMeyer.  
—Student Union Board, Victor Noble, Rick Sparks.

—Housing Advisory Board, vacant.  
The senate also approved living group assignments. Living groups assigned temporarily to a specific senator because of the vacancies will be reassigned to a different senator later, Wright said.

# ASUI golf course moves driving range

The driving range at the ASUI golf course is being moved back to its original location, and "it's not going to cost the university or the ASUI a dime," according to Dick Snyder, golf pro and manager of the course.

The Aboretum Expansion Foundation and the Comprehensive and Employment Training Act (CETA) program are funding the move and other course improvements with money, machinery and employees, according to Dean Vettrus, ASUI general manager.

"We're doing it on a shoestring," Vettrus said. "The Aboretum Expansion Foundation needs the area where the driving range is now and so has given us \$2,500. The CETA program supplies a minimal amount of equipment rental along with their employees." "I've been trying to do this without ASUI money. Right

now, they just couldn't financially support it."

Construction started in mid-June, Vettrus said, and should be finished by late October.

Moving the range entails eliminating about 12,000 yards of dirt hill and moving it to the ninth hole to prevent erosion, Vettrus said. Once the hill is moved the northwest portion will be long enough for an adequate driving range, and visibility of the range from the pro shop will increase.

"Right now whoever is working in the pro shop can't

see the range. Once it is moved, he can see who is out there and who should or should not be out there. Driving ranges are infamous places for ball pilfering," Vettrus said.

Poor visibility and lack of space precipitated moving the range from that hill originally in 1968-1969, Vettrus said.

Other changes being made include planting trees, building six sandtraps, building cart paths throughout the course and expanding the watering of the course.

Cont. from P. 1

# Consequences of cuts

which accreditation is "firmly established" would be "jeopardized."

The report said the nature of the university would not be one of a "multi-faceted major" institution but would closely resemble a "community college devoted to instruction."

**85 Percent**

Faculty would be reduced by 45 positions, staff by 26 and graduate assistantships by 73. It is "likely" most of the professional programs would lose their accredited status. Athletics would need to drop from Division IA to Division II, and the "appropriate reduction" of student financial aid, e.g. fewer scholarships.

**70 Percent**

"Many departments, perhaps entire colleges, would have to be eliminated to make the necessary cuts," the report said.

Of the three major functions associated with the U of I, teaching, research and service, "two would have to be eliminated leaving only teaching as an activity."

Colleges of law and mining would not be able to function, and would probably be eliminated. In engineering, three of the five degree granting areas would be terminated. One-half of the departments in forestry would go. Football would be eliminated and basketball would be retained.

KUID-FM, in co-operation with the vandal marching band & vandalettes, is giving away the use of the entire 175 member corp to some lucky KUID-FM listener. This big event is in conjunction with KUID's 15th birthday.

The entire band, in full uniform, can be yours just for listening to 91.7, so stay tuned for all the details.



KUID FM: Making it possible for you to march to the sounds of a different drummer.

## HOUSE PLANTS BACK TO SCHOOL SPECIALS

5" & 6" Hanging Plants ..... \$2.99  
3" Plants ..... 2 for 99¢  
2 1/2" Plants ..... 3 for 99¢

Thousands to choose from...  
1 mile west of Joel

**MOUNTAIN SEED & NURSERY**

882-5497

10 AM to DARK, Weekdays  
9 AM to 6 PM, Saturday & Sunday



# Board seeks investment repayment

by Marty Trillhaase

BOISE—The State Board of Education/Board of Regents yesterday voted to submit to the Idaho legislature four measures aimed at insuring the state the return on its investment in the medical profession.

The measures, if enacted, would help insure that only bonafide Idaho residents receive state subsidies due them while pursuing medical educations through such cooperative adventures as the WICHE program.

The legislation is also aimed at requiring medical doctors, dentists and veterinarians who graduated from those programs to repay a portion of the state subsidy they received.

The measures would:

—Require applicants to have lived a minimum of 5 years in the state.

—Abolish the current repayment statute, which has not been enforced.

—Establish a new repayment system. Following graduation, doctors, dentists and veterinarians who received such subsidies through those programs would be required to repay the state either financially or

through services. Each year's service would waive one year's debt. Six months service in areas of special needs would waive one year's debt.

—Enter Idaho into an agreement with five western states to waive non-resident tuition at the graduate level.

Using an example given by State Deputy Director of Academic Planning, Cliff Trump, the new system would work this way: a student who successfully enters a cooperative medical program would be given some funds for expenses. But this seldom covers the actual cost. Therefore, the state would subsidize the additional costs. That additional amount, divided in half, would be owed to the state eight years following graduation.

Therefore, if a student is given \$5,000 per year, and his actual costs are \$15,000 per year, he would owe the state \$5000 for the year.

In other matters, the board listened to a University of Idaho proposal for expansion of the Kibbie Dome. The project's cost is estimated at 2.2 million dollars, according to business manager Don Amos. Amos stated the university will solicit 1.2 million dollars. A commercial loan would acquire the

remaining 1 million dollars, he said.

The subsequent \$140,000 interest on the 10 year loan would be repaid through a \$350,000 athletic bond reserve, the principal interest on the Palouse Mall, and principal interest on university inter-fund loans, Amos said.

The Palouse Mall is on university land.

The presentation made by Boise architect Glen Kline centered on a three-phase project. The initial work, Kline said, would establish training and locker rooms, offices and storage spaces for the dome. The second stage would add second level offices for athletic departments and student officials, as well as a student/alumni memorial lounge. The final phase would add 2,500 seats to the east end of the structure.

The board also approved a \$270,000 grant application for the College of Mines and Earth Resources as well as the 1978-79 school year parking regulations. The College of Mines requested approval of a federal grant intended to finance a state mining and mineral resources research station. The move comes under a provision of the Surface Mining Control and Reclamation Act of 1977. Acceptance of the grant will commit the university to provide matching funds for the research institute.



**INCREDIBLE EDIBLES**

**Lettuce introduce you to:**

**Our Delicious Deep-Dish Chicago Style Pizza**

**Try our take-out service on pizzas.**

828 Pullman Rd. 882-1540  
 Mon.-Thurs. 11:00-midnight  
 Fri. & Sat. 11:00-1:30 a.m.  
 Sun. 11:00-midnight

## Only ten testify about fees

"No more money for programs we don't want" was the most frequent comment at Tuesday's fee increase hearing.

Only ten students came to give oral testimony at the hearing in the SUB Ballroom. Perhaps a half-dozen others submitted written statements to be read at the Board of Regents meeting. The Regents meeting began yesterday and continues today in Boise.

A few students spoke in favor of the \$2 increase for intramurals and the \$5 increase for women's intercollegiate athletics, saying that all students could participate in intramurals, and that the women's budget should be brought more in line with the men's.

Most of the students who testified questioned the legality of mandatory fees at an Idaho institution of higher learning.

Students heavily criticized the \$10 student facility hike which some said was a disguised effort to give additional funding to men's athletics. They also attacked the list of possible annual allocations of the \$10 for such projects as turnstiles and a portable ice skating rink for the ASUI-Kibbie Activity Center.

The \$6.50 increase for the Health Center was questioned on two grounds: first, does the center handle enough cases each year to necessitate three additional doctors, including a clinical psychologist and second, could the center use less money if it stressed a preventative medicine program?

Students questioned the Student Union fee because out of \$60,000 that the fee hike would bring in each year, only \$10,000 of it is accounted for in the listing provided by the U of I administration.

**Complete text of the Equal Rights Amendment**

**Sec. 1. Equality of rights under the law shall not be denied or abridged by the United States or by any state on account of sex.**

Sec. 2. The Congress shall have the power to enforce, by appropriate legislation, the provisions of this article.

Sec. 3. This amendment shall take effect two years after the date of ratification.

paid advertisement

sporting softies bounce into good times

**Floyd's SHOE STOP**

511 SOUTH MAIN PHONE 882-0630  
 IDAHO FALLS—POCATELLO—MOSCOW—PULLMAN



# Opinion

## Warped definition

*University n., an educational institution of the highest level, typically, in the U.S., with one or more undergraduate colleges, together with a program of graduate studies and a number of professional schools, and authorized to confer various degrees, as the bachelor's, master's, and doctor's. (Webster's New World Dictionary of the American Language, second college edition)*

Possible passage of the one percent initiative means troubled times for education in Idaho. In compliance with executive order and State Board of Education requests, the university has listed possible cuts in programs and services if funding is reduced.

The problem is with the university's priority list. According to the university report, the first cuts would come in support services, then in some academic departments and minor sports, and finally in other academic programs and major sports.

If, by definition, a university is "an educational institution of the highest level," one wonders why the academic programs would be cut before the major sports.

Granted, athletics are good public relations for the university. And one function of athletics is to create cohesiveness and that elusive quality known as school spirit. Alumni, boosters and students consider attendance at sporting events as recreation.

However, the central purpose of a university is to educate students so they can be useful, functional citizens. That means teaching students the skills they need to become teachers, engineers, lawyers, and yes, pesky journalists.

By protecting the status of athletics, and jeopardizing accreditation or even the very existence of professional programs, the administration is not living up to the purist's definition of a university.

Worse, the administration is not living up to its commitment to students.

L. Triemstra

john hecht

in a pig's eye...

A university president's lot is not a happy one all the time. If it isn't the legislature sniping about overbudgeted educational institutions, the faculty moans about affirmative action and equal pay, or students mutter about beverage containers.

And now the *Lewiston Morning Tribune* has run two editorials this week sniping at U of I President Gibb for not reading the paper. Gibb is apparently offended by some of the things the *Tribune* says about him. The paper has now joined the club of two newspapers not read by Gibb, the *Argonaut* being the charter member last March when I suggested the possibility of two vice-presidents leaving his staff.

To read or not to read, that is the question. It is every citizen's right to not have read criticism or comment with which he or she disagrees. Even a university president should have the same privileges of the ordinary person. However, it would seem a nice idea to have someone on the president's staff who can wade through turgid commentary for something positive.

This is why it was pleasing

to see Gibb reconsider some earlier decisions and decide to fill, by combining, the office of vice president for student services and director of university relations. Now there can be someone whose duties include telling the president what is being written about him.

The search committee for the new position has been announced, and they are preparing to proceed with their charge. What they lack at this time is direction from the president in how the position is to be structured, and thus the requirements of the job and the skills needed.

Except for the one percent initiative, Gibb's major difficulties seem to be with media relations. He was misquoted to his detriment the first day on the job, and has not been completely satisfied with his press treatment since.

The university news bureau ably serves the institution and Gibb with promptness and efficiency, but communication of his thoughts and deeds are still somewhat deficient. The new vice president could be an expert in explaining what the president meant to say or actually did. The person could

also identify for the president what those (these?) weird media-types really want from a public official.

The new veep could be the one who contacts the press, or is contacted for information. In addition, the person could explain to the president the insecurities of journalists, and their selfish demands of time and stroking. The veep, of course, should be a former journalist or public relations specialist who has seen the light and gone on to bigger and better things.

This would protect the president from being misunderstood, and let the public know about the person behind the president's desk. Someone of a gregarious nature, who could also present the university's interests and best feet forward when visiting with the more courteous and friendly natives of the state, such as alumni. In essence, he or maybe she would be a diplomat.

And the nicest thing about the new position, is these same skills could be used when dealing with the students who at this time have only their elected officials to represent their needs.

## Letters

### Inmate letter

Editor,  
I am a man, age 26, presently incarcerated at the Southern Ohio Correctional Facility in Lucasville, Ohio. I would like to communicate with anyone who would like to write me. I will answer all letters I receive.

Life behind these dull gray walls is a lonely and sometimes frightening experience. Only a person who has experienced the pangs of solitude can realize that life without consolation is a bitter pill to swallow. Some people hide from themselves by pretending the wrongs that happen to them really don't exist. Hiding from a truth is hiding from reality, and hiding from reality is not touching life. To live is to touch the whole world. I have only one wish — please help me reach out and touch.

I offer you trust, honesty

and a lasting experience.

Hopefully,

Michael Rose 143-948  
Southern Ohio Correctional  
Facility  
Lucasville, Ohio, 46599

### Inmate plea

Editor,  
I am incarcerated in prison and would like to correspond with college students. I'll an-

The *Argonaut* will accept open letters to the editor until noon on the days prior to publication. Letters must be typed, double-spaced, signed in ink by the author, and include the author's phone number and address. Names may, however, be withheld upon request.

swer all letters as quickly as possible. Write soon, please. Thank you.

Ohio Penitentiary  
Robert Edward Strozier, 131-502

P.O. Box 511  
Columbus, Ohio, 43216



Letters will be edited for spelling, grammar and clarity, but not actual content. In the interest of allowing space for as many letters as possible, letters should be limited to 250 words. The *Argonaut* reserves the right to refuse to run letters containing libelous material, or vulgar or offensive language.

## Argonaut

### EDITOR

Linda Triemstra

### MANAGING EDITOR

Sandi Stacki

### NEWS EDITOR

Marty Trillhaase

### ASSISTANT NEWS EDITOR

Kathy Barnard

### ENTERTAINMENT EDITORS

Lynne Albers

Eddie Sue Judy

### SPORTS EDITOR

Scott Tudehope

### COPY EDITORS

Jim Borden

Eddie Sue Judy

### STAFF WRITERS

Mary Booth

Andy Brundage

Chris Carson

Anna Marie Fritz

John Hecht

N.K. Hoffman

Brett Morris

Dan Tarter

Alexandra Zemanek

### BUSINESS MANAGER

Jan Clements

### ADVERTISING MANAGER

Gloria J. Stonecipher

### ADVERTISING ASSISTANT

Jan Nossaman

### ADVERTISING SALES

Jim Borden

Kathy Crawford

Kelly Crocker

Bill Davis

Dave Dokken

Everett Grodin

Mark Jacobson

Larry Kincaid

Gayle Phillips

Rick Steiner

Mary Storey

Sandi Stacki

### PHOTO BUREAU

Rick Steiner, Director

Clarke Fletcher

Mark Johann

Hugh Lentz

### PRODUCTION BUREAU

John Pool, Director

Ann Fichtner

Liz Glarborg

Hugh Lentz

Joan Matushek

Published twice weekly, Tuesdays and Fridays, throughout the academic year, by the Communications Board, Associated Students University of Idaho. Our offices are located in the basement of the Student Union Building, 620 Deakin Avenue, Moscow, Idaho. Editorial opinions expressed are those of the writer, and do not necessarily represent the views of the ASUI, the U of I, or its Board of Regents. Distributed free of charge to students on campus; mail subscriptions, \$5 per semester, \$8 per academic year. Second class postage paid at Moscow, Idaho 83843.

# Grade school alters traditional teaching

by Sandi Stacki

Schools used to be little, one-roomed buildings where students learned the three R's. The Moscow Community School has only two rooms in the basement of a church, but the concepts learned there and the mode of teaching vary greatly from the traditional way.

"We focus our teaching on individual needs, allowing room for and encouraging individual expression, said Liz Chasse, one of the two teachers at the school. "Part of the program is building in emotional stability and self confidence, helping children to be more socially adept with the world," she said.

The children learn reading, writing and arithmetic, but



Photos by Rick Steiner.

and is put on a shelf when the child goes home at night. Learning is a continuous process and we treat it as such at Moscow Community School," said Don Passow, president of the school. The teachers encourage parental participation.

As a privately operated alternative grade school for children, the school has a Board of Directors composed of parents and Moscow residents. It was formed last year to meet the funding for the school.

The school has no outside funding yet. Government and private funding is sought. Full day students pay \$55 tuition; half day students pay \$30. This year the school has 11 students, aged four to nine. Pre-school to grade nine can



also study science, drama, social studies, art, dance, music and physical education. In some classes the subject matter is integrated to include more than one area at a time, said Chasse.

In morning meeting students and teachers plan the curriculum for the school day. Each student sets his or her own goals. Goal setting is part of the school's principle that learning is enhanced in an environment where emphasis is placed on stimulating self-

motivation and self-discipline.

The children are now working with clay, said Chasse. Clay will be collected by the children in Bovill and fired by the supervised children in a bonfire.

We plan unique ways to include the required state curriculum, while still being able to reach a particular child's problems," said Chasse. For example, if a child has problems with motor coordination, he or she is worked with individually, she said.

In the same way, "if a child grasps something, we don't bore him with going over and over it," said Chasse.

The school was founded in 1973 in the Episcopal church on First and Jefferson Sts. and moved this fall to the First Presbyterian church on Van Buren. "We moved to this new location because it has bigger classroom space, sink facilities and we have complete use of the classrooms," said Deb Rose, the other teacher. Both Rose and Chasse have certified elementary education degrees and Chasse has pre-school certification. The school is state approved and accredited.

"Learning is not something that takes place for eight hours a day in the classroom

attend the school. "We're hoping to get some older students," said Rose. Registration is still open.

"Choice is an integral part of the program," said Chasse. Learning centers, such as a math center, science center and a puppet show are set up in different areas of the room where children can choose different activities. "It's important for children to be able to choose and learn how to live with the circumstances of what they choose," she said.



This Week Boogie To "KRACKER"

Spokane's Hottest New Recording Band

Friday 7-9 Free Drinks For Ladies

At

THE DISPENSARY

N. 214 Main 882-3501

First Bank of Troy

Your Full Service Bank

With

FREE CHECKING

Member FDIC

Moscow-Troy

723 S. Main Moscow



McDonald's Garden Store

Bring us your plant problems

Tulip  
Daffodil &  
Fall Crocus  
(colchicum)  
Bulbs

E. St.

Mark IV

Main St.

Polk St.

Here it is!

Greenhouse and Nursery  
All of your lawn and garden needs.

Special Enrollment!

College Degree Life Program  
\$10,000 or \$25,000  
Fantastic Low Rates!

Also  
Major Medical Supplement  
To Student Health Program  
\$250,000

Really Low Cost!

SUB Lobby  
Mon. Sept. 11  
8-5 PM

Mutual of Omaha

People you can count on...  
Life Insurance Affiliate:  
United of Omaha

# Gibb seeks 'internal solution' to exempt salaries problem

In response to the Idaho Human Rights Commission's request that the University of Idaho correct the inequity that may exist in exempt staff salaries, President Richard Gibb said he wants the University to have the "opportunity" to solve the problem internally before the IHRC becomes involved.

To the extent the problems exist we think we have come up with a workable solution, said Gibb, and would like to try to resolve them at the University level.

Gibb's proposed solution to exempt staff salary inequities includes setting up a review committee whose purpose will

be to conduct hearings, and making recommendations in instances where an exempt salaried staff member alleges discrimination. The committee will only review where there is not agreement between the complainant and his/her supervisor.

Gibb stated in his Aug. 31 letter that Gary W. Osborne, assistant attorney general handling the issue for the IHRC, wants to impose another agency in the exempt staff salary question before the university has had the chance to solve it internally.

"In my opinion the university hasn't done enough on its own," said Osborne. "Since

1974 when we found the university was discriminating against women, it has been the HRC's business," he said.

Members of the Women's Caucus signed a conciliation agreement with the UI in 1974, charging the university to examine all faculty and exempt staff salaries. In the conciliation agreement "all parties agree that the Idaho Commission on Human Rights has jurisdiction in this case."

Four years past the conciliation agreement date, the committee studies done at the university have determined a model which may be a more efficient way to prevent discrimination against women

and minorities in exempt positions, but it has not been approved or implemented by the administration. Gibb does not believe the multiple regression model will be effective.

Hopefully we can settle this amicably between the two

parties with negotiation, said Osborne. He said he would like to talk to Gibb instead of continuing to write letters.

In response to Gibb not wanting external involvement by the IHRC, Osborne said, "I kind of feel we have to keep our hand in it."

## Student health insurance is only for full-time students

University of Idaho Student Health Insurance is now available in Room 6 of the Student Health Center.

Available only to full-time students, the insurance plan costs \$55 for 12 months coverage. Per semester, the cost is \$27.50 for fall semester, and \$36.50 for spring semester, according to Eric Stoddard, campus insurance representative for Capital Planning Services, Inc.

Spouses and dependents of insured full-time students may also be included in the coverage, at an increased cost.

Payment of up to \$1,000 will be paid for any one accident or illness, subject to \$25 deductible. In addition, the policy will pay 80 percent of expenses exceeding that \$1,000, up to \$7,500, making a possible maximum payment of \$8,500.

The policy covers insured persons both on and off cam-

pus, but preventive medicine is not covered.

This insurance policy is offered as a supplement to the accidental death and injury insurance covering all fee-paying U of I students in the amount of \$3,500 for accidental death and up to \$3,500 for accidental injury, subject to a \$100 deductible. Information concerning this is available from the Student Health Center.

Stoddard recommends this insurance as an economical way to "fill in the gaps" of another company. He said most students are either freshmen whose parents urge them to buy insurance, or older students who "got burned" by not being insured.

Anyone interested in the insurance plan should contact Stoddard during his office hours, which are Monday and Wednesday from 3 to 5 p.m. and Thursday from 1 to 3 p.m. in Room 6 of the Student Health Center.

## Minorities plan meetings

A baseball game/potluck picnic will be held Saturday for all Minority Advisory Services students.

It will begin at 2 p.m. at Ghormley Park, located behind the Travelodge.

Students are asked to bring their favorite beverage, silverware, plate, and any food they wish.

Baseball equipment will be furnished.

Several other meetings have been announced by Minority Advisory Services. These

meetings will give minority students the opportunity to meet with each other and with the Minority Advisory Services Counselors.

Chicano/Hispanic students will meet Monday, at 7 p.m. in the EE-DA-HO Room at the SUB.

Native American students will meet Monday, at noon in the Pend O'reille Room at the SUB.

Black students held a meeting Wednesday in the Pend O'reille Room.

## NUDE ON THE FLOOR

BARE BASICS WATERBED KIT

Includes:

Nude (no stain) Frame with hardware and Pedestal Capability  
Lap Seam Mattress/Liberty 2 Heater  
Liner/Grip Strips/Fill & Patch Kits

## THE MAGIC MUSHROOM

602 So. Main  
Moscow 882-8569

507 Sherman  
Coeur d'Alene 667-1277



Reg. \$189.00

**\$169.00**

# I.K. Booksale

This Is The  
Last Chance  
To Pick Up Your  
Money From Books  
Sold

Thursday Sept. 14, 1978  
From 1:00 PM to 5:00 PM  
In EE-DA-HO Room of SUB  
Bring Yellow Receipt.

## MOSCOW TROPICAL FISH WEEKEND SPECIALS

	Reg.	Spec.
Neon Tetra	\$ .29	10/1.00
Serpae Tetra	.49	.29
Red Tail Shark	1.99	1.25
Flounder	3.99	3.49

Other fish specials available

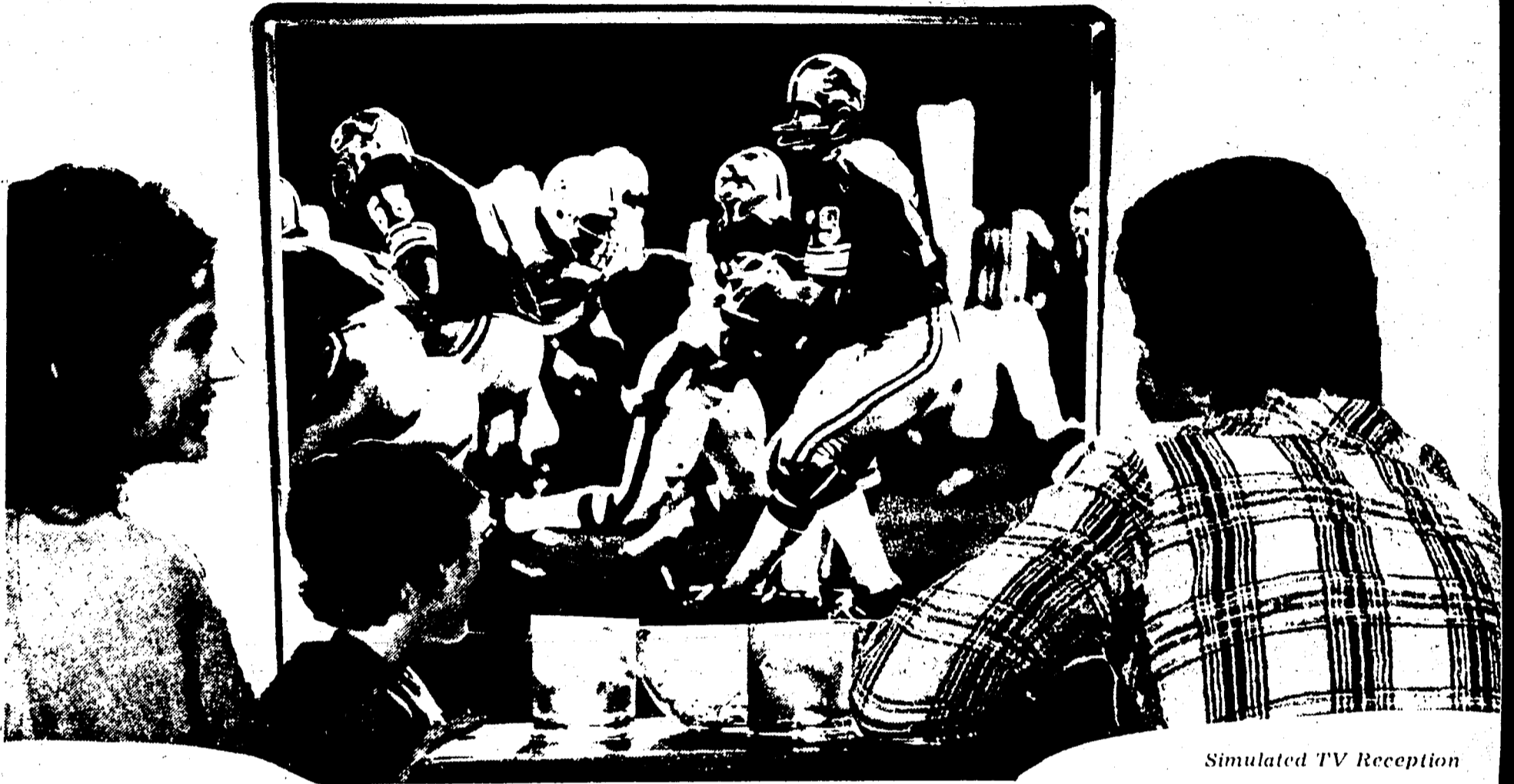
Specials Friday & Saturday only  
Complete fish, bird  
& pet supplies

Moscow Tropical Fish  
719.N. Main 882-8538

BUILD YOUR OWN

**BIG SCREEN COLOR TV**

*Sporting Events Are An Experience As Exciting As Being There!  
Movies Are Seen The Way They Were Meant To Be Seen!  
Pong And Other Video Games Are More Exciting Than Ever!  
Can Be Used With Video Tape Playback Equipment!*

*Simulated TV Reception*

**It's Like Having a "Movie Theater" in Your Home!  
AMAZING \$90.00 PROJECTOR KIT now only \$29.95**

Imagine inviting friends to see TV Specials, Movies, Sports, on your Theater Size TV! It's like viewing on a movie screen! Everything takes on a whole new dimension . . . almost makes you feel like you're in the action! Can also be used outdoors, converting your back yard into an open-air Outdoor Theater! This new invention, gives sharp brilliant TV reception comparable to commercial projector systems costing \$2,500 or more. Absolutely SAFE to use. No electrical or mechanical connections to TV. Removes in seconds for regular size viewing. No special aerial required. Projects up to 5 x 6 foot pictures (7½ Ft. diagonal) on wall or screen, even in the smallest rooms or apartments. Best of all, this amazing Projector is really simple and inexpensive to build yourself. Even a 12-year old can do it quickly. Enclosed Kit comes complete with unbreakable lifetime guaranteed Precision Lens System, 11" x 17" illustrated Plans and Specifications and EASY ASSEMBLY instructions. All you supply is only some cardboard or wood for the simple cabinet. This Projector can be used with ANY Portable TV set 7" to 25", and will enlarge pictures in either Color or Black & White. If you wish, here's an easy way to make money in your sparetime. Simply assemble and sell these TV Projectors to your friends, neighbors, relatives, etc. Everyone with a Television Set will gladly pay you up to \$90.00 for each Projector you build. Make up to \$70.00 on each easy sale. Your cost, one kit - \$29.95, two kits - \$49.95, five kits - \$99.95.

SALES MARKETING Dept. NP-7  
P.O. Box 2646  
Merced, California 95340

Enclosed is \$ \_\_\_\_\_ for \_\_\_\_\_ Postpaid complete TV PROJECTOR KITS

Name \_\_\_\_\_

Address \_\_\_\_\_

City/State \_\_\_\_\_ Zip \_\_\_\_\_

(offer expires 9/25/78)



Against San Jose State

# 1978 Vandal football season begins

by Kevin Kerr

Idaho football clashes with San Jose State Saturday night at 7:30 in the Spartan Stadium in California in a season opener for both clubs. The series between the schools stands at 6-6-1 and will be the debut for Idaho head coach Jerry Davitch, inheriting a club that went 3-8 last season.

Idaho enters the game as the underdog and has been beset by key injuries in preparation for the season opener. The latest calamity for the Vandals came during Saturday's final scrimmage when starting quarterback Rocky Tuttle suffered torn ligaments to his right ankle. Tuttle will probably be lost for at least half the season.

Tuttle's injury places sophomore Hay Goodenbour (6-2, 180) into the spot-light. Goodenbour, from Waterloo, Iowa, played on the jayvee team as a freshman and sat out last season to gain an extra year of eligibility. He has yet to be tested in varsity competition.

"Goodenbour is a good quarterback, he's a real smart

kid and can play the position," said Davitch. "We'll throw the ball, hopefully we won't throw it up for grabs but we won't ease into the game."

## YOUNG SQUAD

So it will be a young, mostly inexperienced Idaho squad that will challenge the Spartans. The Vandals' main strength lies in its running backs. Senior Robert Brooks (5-11, 195), a candidate for All-Big Sky Conference honors, heads the list. Brooks is coming off a knee injury he suffered in the season-opener a year ago that sidelined him the rest of the season. He led Idaho in rushing in both his sophomore and junior years and currently ranks seventh on Idaho's career rushing list with 1,474 yards.

Running with Brooks in the backfield will be sophomore Randy Davenport (5-10, 185). Davenport was a walk-on during spring football, returning to school after serving in the U.S. Marine Corps.

Also expected to see action is senior Tim Lappano (5-9, 185), who has been hampered most of the fall practice by a hamstring injury. Lappano, who is the fastest runner on the team (4.35 speed in the 40-

yard dash), ranks third in the career rushing list with 1,684 yards on 285 carries.

The offensive line has undergone some changes for the coming year. The most notable is the shift of all-conference tackle Larry Coombs (6-4, 220, Sr.) who played as a linebacker last year, is now the starting left guard, and Kyle Riddell (6-4, 270, Jr.), who played as a defensive tackle last season, is now the starting left tackle.

In the receiving department, the Vandals have a talented catcher in Kirk Allen (5-11, 179). From Malad, Allen ranks sixth on the career pass receiving chart with 810 yards on 61 receptions. "Kirk Allen is an outstanding receiver, he'll make the impossible catch," said Coach Davitch. He was Idaho's leading receiver last season with 545 yards on 31 catches. He is joined by wide receiver Jack Klien (6,0, 170, So.) from Idaho Falls and tight end Al Swenson, a 6-3, 180 pound freshman from Boise.

On the defensive side of the ball, the key word is youth. Injuries have taken a toll on experience.

## PARKER LEADS LINE

The anchor to the line is defensive tackle Steve Parker (6-7, 260, Jr.). Parker is the only returning starter on the line. He'll be joined by tackle Mark McNeal (6-7, 230, Jr.) and nose guard Monty Elder (6-4, 225, So.).

The only other defensive players with varsity experience are strong safety Rick Linehan (6-1, 205 So.).

The Vandals have their work cut out for them against the Spartans who boast 45 returning letterman, including seven starters on both offense and defense.

San Jose State is coached by Lynn Stiles, who has a two-year record of 11-11 following last season's 4-7 finish, and shares a similar problem with the Vandals - lack of depth on the line.

"Most of our inexperience has been on the line so far," said Stiles. "We do feel we have some skilled people on the perimeter that can make up for them, however."

## "MOWIN' SAMOAN"

One of those expected to plague the Idaho offense is Spartan linebacker and potential All-American Frank Manumaleuna, nicknamed "The Mowin' Samoan."

"No doubt about it, he's All-American on and off the field," crowed Stiles. "I've coached No. 1, No. 3, and No. 5 draft picks, and he rates right up there. I rate Frank right with Jerry Robinson, another guy I coached."

The game will be broadcast by KRPL-Radio with Bob Curtis handling the play-by-play and Rick Nelson the color commentary. The broadcast will begin at 7:10 p.m.



Idaho  
San Jose St.

Offensive line

## WHEN IDAHO HAS THE BALL

WR	Jack Klein, 6-0, 170, So.	SE
LT	Kyle Riddell, 6-4, 270, Jr.	LT
LG	Dan Cozzetto, 6-2, 230, Sr.	LG
C	Larry Coombs, 6-4, 230, Sr.	C
RG	Dick Wilkin, 6-3, 230, Sr.	RG
RT	Bryan Zimmerman, 6-4, 270	RT
TE	Al Swenson, 6-4, 215, Fr.	TE
WR	Kirk Allen, 5-11, 180, Sr.	FL
QB	Jay Goodenbour, 6-2, 180, Jr.	QB
RB	Robert Brooks, 5-11, 195, Sr.	HB
RB	Randy Davenport, 5-10, 185	FB
P	Dion Jergo, 6-2, 195, Fr.	P

## Unbelievable Savings CALCULATORS & STEREO Calculators

### Texas Instruments

	WAS	SALE
TI-59	\$300	\$219.95
TI-58	\$125	\$92.95
TI-57	\$60	\$45.95
PC-100A	\$200	\$149.95
MBA-FINANCE	\$70	\$52.95
TI-55	\$50	\$38.95
SR-40	\$25	\$19.95
BA-BUSINESS	\$30	\$23.95
TI-5040	\$110	\$78.95
TI-25	\$33	\$23.95
TI-1750	\$25	\$17.95
PROGRAMMER	\$60	\$44.95
SPEAK & SPELL	\$55	\$44.95
MODULE LIB. FOR 58, 59	\$	\$29.95



### HEWLETT PACKARD

	WAS	SALE
HP-10	\$175	\$144.95
HP-19C	\$275	\$222.95
HP-21	\$80	\$49.95
HP-25C	\$160	\$130.95
HP-29C	\$175	\$144.95
HP-31E	\$60	\$49.95
HP-32E	\$80	\$69.95
HP-33E	\$100	\$81.95
HP-37E	\$75	\$65.95
HP-38E	\$120	\$97.95
HP-67	\$450	\$359.95
HP-92	\$495	\$395.95
HP-97	\$750	\$599.95

- Above prices include A/C Adaptor-Charger & Carrying Case. \$12.95 extra for 110/220V Adaptor.
- All above calculators have full one year factory warranty.
- Enclose payment in full with order, or remit \$20 with order, balance C.O.D.
- Shipping charges: Add \$3.00 for calculators and 4% of price for receivers and 5% for speakers.
- FAST DELIVERY GUARANTEED only with M.O. or certified checks. Personal checks will delay the order until it clears banks.

### Receivers

	LIST	OURS
PIONEER SX-580	\$225	\$166
PIONEER SX-680	\$275	\$195
PIONEER SX-780	\$350	\$248
PIONEER SX-880	\$450	\$313
PIONEER SX-980	\$600	\$418
JVC JR-S61W	\$200	\$155
JVC JR-S81W	\$300	\$232
JVC JR-S201	\$360	\$270
JVC JR-S301	\$480	\$360

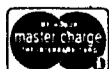
### Speakers

	LIST	OURS
JBL L-19	\$175	\$121 ea.
JBL L-36 (3-way)	\$240	\$169 ea.
JBL L-40	\$250	\$173 ea.
JBL L-50	\$325	\$225 ea.
JBL L-100	\$400	\$239 ea.
JBL L-110	\$410	\$283 ea.
ADVENT LARGE	\$140	\$116 ea.
EPI 100V	\$109	\$79 ea.
ESS LS-8	\$179	\$143 ea.

PHONE ORDERS ACCEPTED ONLY WITH CREDIT CARDS

814-237-5990

(Add 3% for Credit Card Orders)

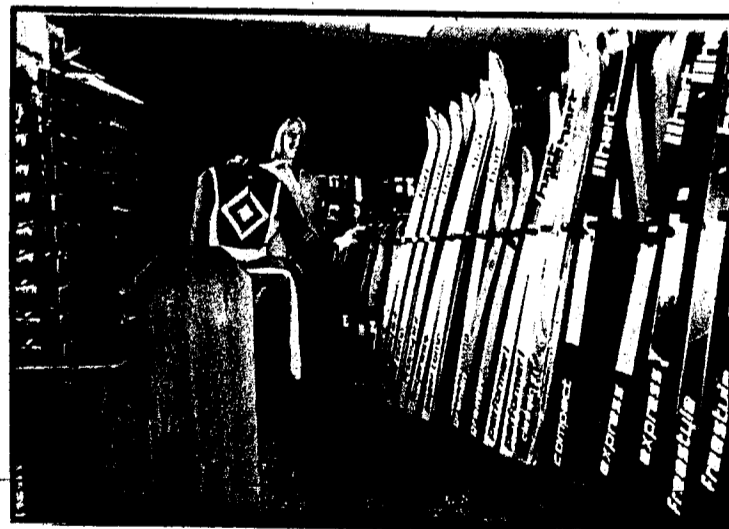


SEND FOR FREE CATALOGUE

STEREO WAREHOUSE

110 NEW ALLEY, STATE COLLEGE, PA. 16801

## Bring in the whole family for BIG SAVINGS ON



# SKI EQUIPMENT 30% OFF ALL LAST YEAR'S STOCK-ON-HAND

- Hart & Yamaha Skis • Saloman Bindings
  - Munari Boots • Poles • Gloves • All Accessories
- Sale ends September 30, 1978

**Widman's Sport Center**

1906 S. Main, Moscow, 882-1576  
Tues-Sat: 8-5:30 & Friday 'til 9 pm



# Athletic trainer serves important role

by Liz Olds

The room is too small. Women nursing ice packs sit on the floor, women with heating pads lean on the counter, women are being taped in the hallway. It's like the dinner rush at McDonald's.

Jackie Laws, in her first year as women's athletic trainer, moves quietly from one aching athlete to another, scrutinizing each injury with care. Her expression is one of concern and competence. She takes her job seriously, and she does it well.

"A good trainer can sometimes be the difference between getting someone back on the field in a week or a month." The statement produces a little good-natured razzing from the women being treated, but they know practice would be a lot more painful today if Laws and her student assistants weren't wrapping their ankles, padding their shin splints and draining their blisters.

According to Laws, the majority of women's injuries occur in the lower leg. Many are caused by not being in proper condition when the season begins, putting too much stress on an out-of-shape body.

Soon after the early practice sessions each woman is given a leg strength test, and a weight-lifting program is designed to build up the



In her first year at the U of I, Jackie Laws, women's athletic trainer, examines a Vandal athlete. Photo by Hugh Lentz.

weaker muscles. At the beginning of the season it is too late to prevent initial pulls and tears, and the best medicine is preventive. "Athletes should be in shape before practices begin!" is Laws vehement advice.

She estimated that eighty percent of her job is psychological. "The same injury might keep one person out for three days and another out for ten. Attitude is very important."

"My major responsibility is to establish a good rapport with both the coaches and athletes. Then I can act as a sort of liaison." She cited trust as a key to forming a good trainer-player-coach relationship. "I want to get to know them really well. Then it will be easy for us all to work together."

Laws' opinion has a lot to do with whether someone plays or sits out. Everyone involved must respect her

judgment, for it can affect the final score.

The general atmosphere of the training room is easy-going and friendly, but a no-nonsense air prevails whenever an athlete comes in with a problem.



1st 2nd 3rd Final

ensive ineups

## BALL WHEN SAN JOSE HAS THE BALL

- So. SE Mike Kirkman, 6-2, 185, Sr.
- 0, Jr. LT Bob Sims, 6-2, 235, Sr.
- 30, Sr. LG Pete Angelidakis, 6-3, 242, So.
- 230, Sr. C Gil Martine, 6-2, 235, Sr.
- 0, Sr. RG Steve Hart, 6-2, 220, Jr.
- 6-4, 270 RT Max Hooper, 6-4, 260, Fr.
- , Fr. TE Napoleon Sparks, 6-2, 220, Sr.
- , Sr. FL Bernard Proctor, 5-8, 165, Jr.
- 2, 180, Jr. QB Ed Luther, 6-2, 202, Jr.
- , 195, Sr. HB Jewel Thomas, 5-11, 217, Jr.
- 10, 185, FB Kevin Cole, 6-1, 188, Sr.
- , Fr. P Frank Ratto, 5-10, 180, So.

# VANDAL ACTION '78

## Is There a New Team in Town?

KUID-TV answers that question when VANDAL ACTION '78 introduces viewers to the University of Idaho 1978 football fever. The KUID cameras capture the personalities of the coaches, go to grueling practices, spot players in action.

VANDAL ACTION '78 takes all the questions and hopes of a new year and shows both sides of the fence—from the snappy sports writers, the bitter losing record and the testing of a new novice head coach—to the players, the action, the trials and the triumphs of plays done to perfection.

Tonight at 6:30 and 10:30 and  
Tomorrow at 4:30 p.m.

# KUID 12 TV MOSCOW

### Stereo Sale One of a kind while they last

#### Receivers:

##### Superscope

	List	Sale
R-330	219.95	119.00
R-340	269.95	149.00
R-350	299.95	169.00

##### Nikko

	List	Sale
3035	249.95	149.00
5055	299.95	166.00
6065	349.95	209.00
9095	519.95	288.00

#### Speakers:

##### Marantz

	List	Sale
HD66	189.95 ea.	119.00 ea.
HD77	269.95 ea.	139.00 ea.

##### ZP1

	List	Sale
495	99.95 ea.	49.00 ea.
500	119.95 ea.	59.00 ea.

#### Amplifiers

	List	Sale
1150	449.95	266.00
4070	299.95	159.00

Open till 9:00 PM  
Friday's

**Cox & Nelson  
Inc.  
5th & Main**

### Headquarters For All

Domestic auto and truck parts and foreign makes including: Austin, Capri, Datsun, Fiat, MG, Opel, Toyota, Triumph, Volkswagon and Volvo.



**MCGRAW'S**  
AUTO PARTS  
&  
MACHINE SHOP

519 West Third - Moscow - 882-5596

Open- 7:30 to 5:30, Mon.-Fri., 8:00-5:00 Sat.



## Manager is needed

U of I women's volleyball team is looking for a manager, according to head coach Amanda Burke.

The manager must be able to attend practice every weekday from 3 to 6 p.m., and travel with the team weekends. Duties will include han-

dling equipment and taking statistics. No experience is required.

There's no pay, but the manager will receive one PE credit.

Anyone interested should see Burke in room 201B of the Memorial Gym, or leave a message at 885-6384.

## Moore hopes for perfect season in '78

Mention "field hockey" to U of I women's coach JoDean Moore and her eyes light up like a kid on Christmas morning. "It's an easy game to get hooked on. And I'm hooked!"

"Field hockey is one of the most grueling sports you can participate in. It's definitely the equivalent of a football game, minus the contact," she said. There are two thirty-five minute halves of non-stop running and non-stop thinking. No coaching is allowed from the sidelines. "It's really a player's game. They have to do the thinking for themselves."

One of the most intense aspects of women's collegiate field hockey is the scheduling. Teams play up to four games in one weekend. Endurance and mental toughness are of paramount importance.

"The players have to develop what we call a "hockey sense" because the situation changes so rapidly. You've got to keep that concentration going all the time or you're making those mental errors. If you're caught in the wrong place you're burned."

The team's conditioning program includes running three miles a day on top of the three-hour practice consisting of stick drills, passing drills, and a lot of sprinting at top speed on the field. "We have some sore muscles already. It's to be expected when you work this hard," Moore noted. Hockey becomes an obsession. To an outsider it seems crazy, but the work pays off.

In two years of coaching field hockey at Idaho, Moore has compiled a record of 34-6-4. Both of those years she worked with a basically different starting line up. Eight players, including Betty Fian-daca, one of the mainstays of last year's 18-2-2 squad, will be missing this season. Moore doesn't seem worried: "We're going to miss the girls who aren't with us, but we have the players to fill those shoes."

Moore has set high goals for this year's squad. "Twenty-five wins and no losses is not an unrealistic goal. I believe it can be done."

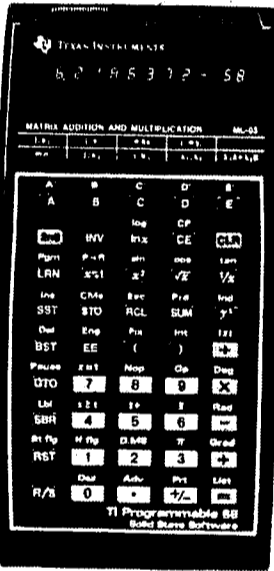
## Football talk set

A look back at the most recent Idaho football game, plus a preview of the next encounter will be the topic of "Quarterback Gathering" held every Monday from noon to 1 p.m. at the University Inn on the Pullman Highway.

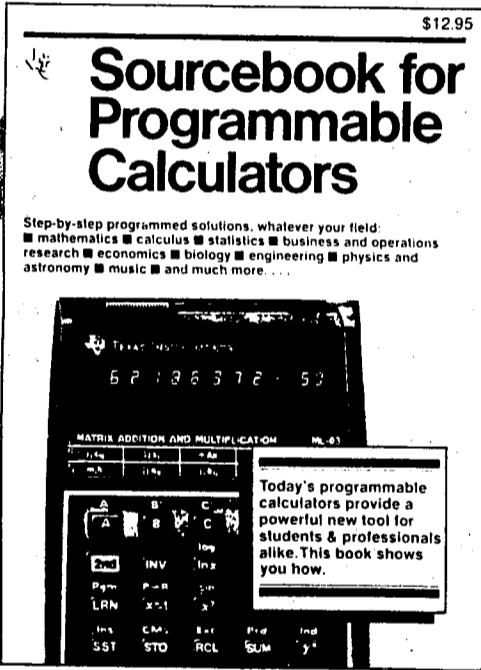
Although a lunch will be provided for \$2.75, brown baggers are welcome. It's open to the public and will sport guest speakers, including Jerry Davitch, head coach of the Vandals.

Let a TI calculator help you make more efficient use of your time. This semester... and for years to come.

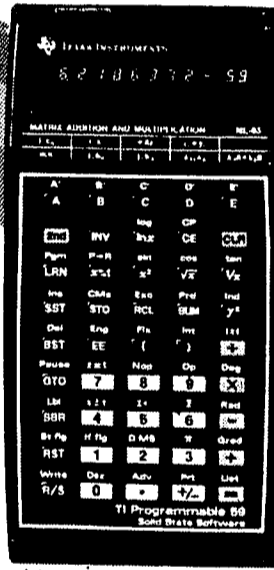
# FREE! This \$12.95 value book when you buy a TI Programmable 58 or 59.



**\$124.95\***  
TI Programmable 58



**\$12.95**  
Sourcebook for Programmable Calculators



**\$299.95\***  
TI Programmable 59

The *Sourcebook for Programmable Calculators* is a new book from Texas Instruments designed to help you explore the power of your programmable calculator. Contains over 350 pages covering step-by-step programmed solutions to problems in a wide range of fields. And it's yours free, if you act now.

The TI Programmable 58 and 59 both feature TI's preprogrammed Solid State Software™ plug-in modules. A Master Library Module of 25 programs in math, statistics, and finance is included. Optional libraries are available in: Applied Statistics. Real Estate/Investment. Aviation. Marine Navigation. Surveying. Leisure. Business Decisions. Securities Analysis. And more to come.

For TI-59 owners, TI's Specialty Packettes

(pre-written programs) are available in major study fields including civil, electronic and computer engineering; physics, statistics, and business/finance. And, additional ready-made programs written by professionals in your field are available through TI's Professional Program Exchange (PPX-59) membership program.

### Use this coupon to obtain your free book.

Texas Instruments will send you a free copy of *Sourcebook for Programmable Calculators*, a \$12.95 value, when you: (1) Return this completed coupon, including serial number, (2) along with your completed TI-58 or TI-59 customer information card (packed in box), (3) a dated copy of proof of your purchase verifying purchase between August 15 and October 31, 1978. Your coupon, customer information card, and dated copy of proof of purchase must be postmarked on or before November 7, 1978 to qualify for this special offer. Book covers step-by-step programmed solutions to problems in a wide range of fields: mathematics, calculus, statistics, business and operations research, economics, biology, engineering, physics and astronomy, music, and much more.

Send to: TI-58/59 Free Book Offer, P. O. Box 53, Lubbock, Texas 79408

Name \_\_\_\_\_

Address \_\_\_\_\_

City \_\_\_\_\_

State \_\_\_\_\_ Zip \_\_\_\_\_

TI-58 or TI-59 SERIAL NUMBER \_\_\_\_\_

(from back of calculator)

Please allow 30 days for delivery. Offer void where prohibited by law. Offer good in U.S. only.

TI's Programmable 58 and 59 calculators offer a wide range of capability and performance. From the student to the advanced professional, there's a TI Programmable ideally suited to your needs, and your price range.

See them both at your retailer today. Don't miss out on this special, limited time offer.

\*US suggested retail price



**TEXAS INSTRUMENTS**  
INCORPORATED

# Washington State gets in the swing as school nears

## Artist series schedule set

Officials of the Washington State University-Pullman Artist Series say good seats are still available for all eight concerts of the 1978-79 schedule.

The series opens Saturday, Oct. 7, with the Massenkoff Russian Folk Festival.

The schedule also includes the Sofia Philharmonic Orchestra, Tuesday, Oct. 24; The Young Concert Artists, Inc., String Trio, Wednesday, Nov. 1; Tchaikovsky's "The Nutcracker" performed by Ballet Folk of Moscow, and the Washington-Idaho Symphony, Monday, Dec. 11; Russian pianist Boris Block, Tuesday, Jan. 16; Heiichiro Ohyama, violist, Tuesday, Feb. 13; Western Opera Theater in Puccini's "La Boheme" Thursday, March 22; and Daniel Adni, Israeli pianist, Tuesday, March 27.

## Fiber arts topic of symposium

Speakers have been announced for the 1978 symposium on the fiber arts to be sponsored by the Washington State University Museum of Art Oct. 13-14.

Mildred Constantine, Gerhardt Knodel, Chere Lai Mah and Louise Allrich will deliver addresses at the event which annually brings nationally-known art personages to campus for in-depth discussions of current trends and issues in the field.

The symposium will be held in conjunction with the exhibition, "Diverse

Directions: Fiber Arts," which will contain works by Sheila Hicks, Claire Zeisler, Francoise Grossen, Sherri Smith and Neda Al Hilali, among others.

## Auditions set for symphony

Washington Idaho Symphony conductor H. James Schoepflin has set auditions for this season's symphony for next Thursday at the University of Idaho Music Building.

Auditions will begin at 7 p.m. for woodwinds, 8 p.m. for brass and percussion and 9 p.m. for string players. Orchestra rehearsals for the season begin Sept. 18.

Area musicians needing further information about the area's only community orchestra should contact the symphony office at 108 East Second in Moscow or phone 882-6555.

Choral director Duane Baker announced that there are some openings in the Washington Idaho Symphony Chorus, particularly for men. The full chorus will perform twice during the season, and a special women's chorus will sing with the "Nutcracker" ballet in December. The major work of the season will be "A German Requiem," by Johannes Brahms.

## Novels read over KWSU

KWSU radio at 1250 AM has a radio reader program which features a half-hour reading from a popular novel twice daily. Readings can be heard at 10 a.m. and 7 p.m.

Monday through Friday.

In the process of being read is *The Great Los Angeles Blizzard* by Thom Racina. The story is a skillfully woven tragedy/comedy about the drama of the snow that will not stop. All readings are done by Dick Estelle, a KWSU employee.

Upcoming novels to be read on the air include *The Secret Life of Henry Ford*, by John Cote Dahlinger, and *Mawson's Will*, by Lennard Bickel.

## Muhlfeld Trio first recital

Washington State University music department concert schedule for 1977-78 opens Thursday, Sept. 28, with a recital by the Muhlfeld Trio.

The trio is composed of H. James Schoepflin, clarinet; Christopher von Baeyer, violoncello, and Judith Schoepflin, piano, all of the WSU music faculty.

The Sept. 28 concert will be open to the public without charge.

## Symphony plays Lewiston first

Using the same format as

the famous Boston Pops Concerts, the Washington Idaho Symphony Association announces "Pops Comes to Clearwater Country" Sunday, October 8, at Lewiston Elks Lodge No. 896 at 7:30 p.m.

Tickets are \$7.50 per person and are available through the Washington Idaho Symphony office, P.O. Box 9185 Moscow, and David's Department Store.

This special gala evening will feature Carmen Dragon, former conductor of the Hollywood Bowl Orchestra, as guest conductor. Appearing with Dragon will be Kathy Knight, soprano, former Miss Colorado and rising musical comedy star.

The Symphony Association will also present old-time fiddler Patsy Buckley Mercer, an

area resident for many years. Mercer is a national champion fiddler and will play "Orange Blossom Special."

The Washington Idaho Symphony, the area's only resident community orchestra, under the direction of H. James Schoepflin, will play tunes from Broadway shows, popular hits as well as classical and light favorites arranged by Dragon. A 100-voice chorus with choral director Duane Baker of Troy will also be featured.

Refreshments will be available and guests will sit at tables of six, eight and ten.

Guest appearances are made possible through a public service grant from Chevron Oil. All proceeds from the event will benefit the Washington Idaho Symphony now in its seventh season.

## Album preview

KUID-FM 91.7 MHz "Album Preview," nightly at 9.  
 Friday- Norton Buffalo, "Desert Horizons"  
 Saturday- Dinah Washington, "Sad Songs, Blue Songs"  
 Sunday- Big Maybelle, "The Amazing Big Maybelle"  
 Monday- Gato Barbieri, "Tropico"  
 Tuesday- Don Pollen, "Montreux Concert"  
 Wednesday- Leon Redbone, "Champagne Charlie"  
 Thursday- Leroy Jenkins, "Revolutionary Ensemble"  
 Friday- Ken Bloom, "Ken Bloom"

## Northwestern Mountain Sports Bookpacks & Running Shoes



Packs from \$9.95-\$85.00 by Jan Sport, Northface, Sierra Designs, Alpine Products, Wilderness Experience, Hine-Snowbridge.



by Nike Brooks Puma

This Coupon good for 10% off on any bookpack at Northwestern Mountain Sports

expires Oct. 1, 1978

This Coupon good for one FREE frisbee with purchase of any running or tennis shoes at Northwestern Mountain Sports

expires Oct. 1, 1978

410 W. 3rd Moscow 882-0133

10:00-5:30 Mon-Sat

N. 115 Grand Pullman, Wa. 567-3981

**HYLTON'S** CYCLE, INC.  
 115 E. PALOUSE RIVER DR. P.O. BOX 8759 MOSCOW, IDAHO 83843

## Used Specials

Year	Model	Make	Reg.	Now
(1)	1976	CB500T	Honda	\$1095. \$975.
(1)	1976	MR175	Honda	645. 545.
(1)	1976	XL175	Honda	595. 525.
(1)	1975	MR175	Honda	625. 525.
(1)	1975	TS125	Suzuki	490. 398.
(1)	1975	CT70	Honda	460. 420.
(1)	1973	250 Pursan	Bultaco	695. 395.
(1)	1970	CL175	Honda	495. 395.

**HYLTON'S**



# K-L Factory Outlet

**Jeans and Jewels**

**Largest selection of Jeans in town**

**14 oz. buckle-back \$17.50**

**New Costume Jewelry Quality & Style (\$3.00 to \$5.00)**

9:30-5:30 Daily 205 S. Wash.  
9:30-8:00 Friday 882-5500

Bank cards accepted



Spot Your Game Before You Hunt with

**DEMA ENTERPRISES**

OPERATIONS MANAGER:  
Doug Gadwa  
Rt. 3 Box 111  
Moscow, Idaho 83843  
208-882-8644

### AIRCRAFT

Rental PA-18 C-182  
Block Time Sold  
Instruction  
Charter  
Air Taxi Operator  
NO. S05-6AT

CHIEF PILOT:  
Jack Magee  
208-882-1235

## SUB Films Present THE GOOD, THE BAD AND THE UGLY

With Clint Eastwood

**Saturday, Sept. 9**

4:30, 7:00, and 9:30

**Borah Theatre, 2nd Floor  
In The S.U.B.**

## Student Union

### Organizational Meeting

**Wed. Sept. 13  
6:30 PM**

**Pow Wow Room**

**Men's & Women's  
Intercollegiate  
Bowling Team**

## Entertainment

### Rabblrouser speaks about assassination

Mark Lane, an attorney who believes the assassination of Dr. Martin Luther King, Jr. was a conspiracy, will speak Tuesday at 8 p.m. in the SUB Ballroom. The lecture is free and open to the public.

Lane, who has authored six books including one about the John Kennedy assassination, charges that FBI agents were involved in a conspiracy to allow the real murderer of King to escape. He uses both slides and tape recordings in his presentation depicting the guilty plea by James Earl Ray as "the result of coercion and coverup."

Lane was with Ray in late August during the congressional hearings on the King murder.

It is not the first time in Idaho for Lane, whom columnist Bill Hall has called a

"cause junkie." In the early 1970's he was involved at Mountain Home in a group of



**Mark Lane**

military men who were openly critical of the military. He also

arranged a protest in downtown Boise against the Amchitka underground nuclear test on an Alaska island.

Praised as "the best investigator in America" by Fred Nichol, the U.S. Federal judge who presided over the Wounded Knee trial where Lane won a dismissal for his Indian clients, he serves as director of the Citizens Commission of Inquiry. That Washington-based group has lobbied for full and open Congressional inquiries into the killings of President Kennedy and Dr. King.

### Speedwagon for homecoming

REO Speedwagon will roll into Memorial Gym Sunday, October 22 kicking off homecoming festivities with a concert.

UFO will also appear, warming up the crowd at 8 p.m. The two high-energy rock 'n roll bands are sponsored by Northwest Talent Productions and ASUI Programs.

James "Ajax" Engle, promoter, said Northwest Talent will assume financial responsibility for the upcoming show, receiving 90 percent of the gate proceeds. The remainder will go to the ASUI General Fund.

ASUI Programs Director, Imogene Rush, said if the promoter responsibility formula works out, her department would continue letting them assume the risk, concentrating on lesser-known performers.

REO Speedwagon isn't exactly a household word when it comes to rock music, but they have been around several years, recording at least six moderately selling albums. The six-piece band is noted by rock aficionados for its honky piano, bustin' loose rhythms and lightning-quick guitar solos.

Although not official yet, tickets are expected to sell for \$5.50 in advance, \$6.50 at the door, with a special price for students.

### Disco dance set

A disco dance will be held in the SUB Ballroom Saturday night from 9-12 p.m. Pete Andrusis from KUOI-FM, will disc jockey.

The dance is co-sponsored by New Student Orientation and ASUI. There is a 50 cent admission charge.

### SUPPORT

The Advertisers who

### SUPPORT

The Argonaut

## Events

### Friday, Sept. 8...

...Society of Professional Journalists will meet in the Sawtooth Room at noon to discuss programs, projects and business. Old and new members are encouraged to attend.

..."Slimnastics" exercise class to be held at noon for one hour in the Women's Center. Those who wish to participate should wear leotards, tights or other exercise clothing.

...U of I varsity golf team will hold a meeting concerning try-outs, at the golf course lounge at 5 p.m.

### Saturday, Sept. 9...

...Minority students are invited to a potluck picnic/baseball game to be held at Gormley Park at 2 p.m. Bring a beverage, silverware, dish and food-type goodies. A barbecue fire and baseball equipment will be provided.

...Open mike Coffee House in the Vandal Lounge from 8-11:30 p.m. Anyone may perform.

...Palouse Area Singles, Club Huckleberry picking and picnic. Meet at Rosauers/Drug Fair at 10 a.m.

### Sunday, Sept. 10...

...Wesley Foundation Fellowship will have a "food, fun, fellowship" event at the First United Methodist Church from 5-7 p.m. Open to all students.

### Monday, Sept. 11...

...Chicano/Hispanic students are invited to meet with their minority advisor and other Chicano/Hispanic students at a meeting to be held in the Ec-da-ho Room at 7 p.m.

...The Outdoor Recreation Leadership class will be meeting at the Outdoor Program Center at 7 p.m. to discuss leadership skills and plan and implement outdoor trips. All persons are welcome.

...U of I Soccer Club will hold a meeting to elect officers at the Appaloosa Room at 7:30 p.m.

...Palouse Area Singles Club activities planning committee meeting at NW 300 Thomas 1, Pullman at 7:30 p.m.

### Upcoming...

...National Organization for Women will hold a meeting Sept. 12 at 7:30 p.m. Room to be posted. All new members welcome.

...Alpha Phi Omega will continue to hold interviews for new members on Sept. 13 and Sept. 14 from 6:30-7:30 p.m. Room to be posted.

## DANCERS

If you're interested in performing in dance concerts

### Tryouts

are Thursday Sept. 14

5:30 PM at

The Women's Gym in the Dance Room

Performances are Nov. 2, 3, 4

# Earn Over \$650 A Month Right Through Your Senior Year.

If you're a junior or a senior majoring in math, physics or engineering, the Navy has a program you should know about.

It's called the Nuclear Propulsion Officer Candidate-Collegiate Program (NUPOC-C for short) and if you qualify, you can earn as much as \$650 a month right through your senior year. Then after 16 weeks of Officer Candidate School, you'll receive an additional year of advanced technical education. This would cost you thousands in a civilian school, but in the Navy, we pay you. And at the end of the year of training, you'll receive a \$3,000 cash bonus.

It isn't easy. There are fewer than 400 openings and only one of every six applicants will be selected. But if you make it, you'll have qualified for an elite engineering training program. With unequalled hands-on responsibility, a \$24,000 salary in four years, and gilt-edged qualifications for jobs in private industry should you decide to leave the Navy later. (But we don't think you'll want to.)

Ask your placement officer to set up an interview with a Navy representative when he visits the campus on November 2 or contact your Navy representative at 206-442-5700 (collect). If you prefer, send your resume to the Navy Nuclear Officer Program, 300-120th AVE. N.E., BELLEVUE, WA. 98005, and a Navy representative will contact you directly. The NUPOC-Collegiate Program. It can do more than help you finish college: it can lead to an exciting career opportunity.

## Navy Officer.

## It's Not Just A Job, It's An Adventure.

# Clip and save: Complete list of Moscow restaurants

**A&W Drive Inn**-321 N. Main—Hamburgers, seafood, root beer, self service and car hop service. 11 a.m.-11 p.m. seven days a week.

**Allino's Hoagie Shop**-308 W. Sixth—Italian dinners, sandwiches, beer and wine, sidewalk cafe. Monday-Thursday 11 a.m.-10 p.m., Friday-Saturday 11-2:30 a.m., Sunday 4-10 p.m.

**Arctic Circle**-1000 Pullman Road—Hamburgers, malts, french fries, self service. 10 a.m.-10 p.m. seven days a week.

**Billiard Den**-611 S. Main—Sandwiches, pizzas, beer and wine. Sunday-Thursday 2 p.m.-1 a.m., Friday-Saturday noon-1 a.m.

**The Bistro Cafe**-Washington and Troy Highway—Breakfast anytime, home baked cinnamon rolls, sour dough pancakes. Open 24 hours, seven days a week.

**The Broiler**-University Inn,

1516 Pullman Road—Steaks, seafood, chicken dinners. Monday-Friday 11:30 a.m.-2:30 p.m. and 5:30-11 p.m., Sunday 5:30-11 p.m.

**Cavanaugh's Landing**-Travelodge, 645 Pullman Road—Exotic, international cuisine. Sunday-Thursday 7 a.m.-10 p.m., Friday-Saturday 7 a.m.-11 p.m.

**Chinese Village**-One half mile south on Highway 95—Chinese and American food cocktails. Monday-Saturday 4 p.m.-2 a.m., Sunday 4-10 p.m.

**Country Kitchen**-1222 Pullman Road—Short orders, breakfast anytime. Open 24 hours, seven days a week.

**Incredible Edibles**-828 Pullman Road—Chicago-style deep dish pizza, Italian dinners, sandwiches, salad bar, beer and wine. Monday-Thursday 11 a.m.-midnight, Friday 11-1:30 a.m., Saturday noon-1:30 a.m., Sunday noon-

midnight.  
**Johnnie's Restaurant and Lounge**-226 W. Sixth—Steaks, dinners, short orders, cocktail lounge. Open 6-1 a.m. seven days a week.

**Karl Marks Pizza**-1328 Pullman Road—Pizza, sandwiches, self-service, beer and wine. Monday-Thursday 11-12:30 a.m., Friday-Saturday 11-1:30 a.m., Sunday noon-midnight.

**Kentucky Fried Chicken**-310 W. Third—Fried chicken, ham, beef sandwiches, self service. Open 11 a.m.-9 p.m. seven days a week.

**Mark IV Restaurant and Lounge**-414 N. Main—Steaks, dinners, short orders, cocktail lounge. Open 6 a.m.-10 p.m. seven days a week.

**McDonald's**-1404 Pullman Road—Hamburgers, fries, malts, self service. Monday-Thursday 6:30 a.m.-11 p.m., Friday-Saturday 6:30-1:30 a.m., Sunday 7:30 a.m.-11

p.m.  
**Moreno's Sea Swiper**-305 N. Main—Seafood, Mexican dinners, half-pound hamburgers, self service, beer and wine. Monday-Thursday 11 a.m.-8 p.m., Friday-Saturday 11 a.m.-9 p.m., Sunday noon-8 p.m.

**New Hong Kong Cafe**-214 S. Main—Chinese and American food, beer. Monday-Friday 11 a.m.-10 p.m., Saturday 11 a.m.-midnight, Sunday 4-9 p.m.

**The Nobby Inn**-501 S. Main—Steaks, seafood, dinners, cocktails. Sunday-Thursday 6 a.m.-midnight, Friday-Saturday 6-1 a.m.

**P.W. Hoseapple's**-500 Asbury—Hamburgers, dinners, pizza, cocktails. Monday-Saturday noon-1 a.m., Sunday noon-10 p.m.

**Rathaus Pizza Shoppe**-215 N. Main—Pizza, gourmet sandwiches, self service, beer and wine. Monday-Wednesday

3:30 p.m.-1 a.m., Thursday-Sunday 11-1 a.m.

**Rathskeller Inn**-Highway 95 South—Hamburgers, chicken, self service, cocktails. Monday-Saturday 11-1 a.m., Sunday 1 p.m.-1 a.m.

**The Spruce Tavern**-521 S. Main—Hamburgers, self service, beer and wine. Open 10-1 a.m. seven days a week.

**The Studio**-505 S. Main—Dinners, steaks, cocktails Open 7 a.m.-10 p.m. seven days a week.

**T.J.'s Pantry**-University Inn, 1516 Pullman Road—Breakfast anytime, short orders. Open 24 hours, seven days a week.

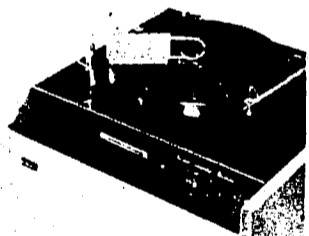
**Taco John's**-520 W. Third—Mexican food, self service. Open 11-1:30 a.m., seven days a week.

**Taco Time**-410 W. Sixth—Mexican food, self service. Open 11 a.m.-1:30 a.m. seven days a week.

## Don't Play Dirty

Some of those bad sounding records you've been complaining about may not be all that bad. When even disc washer fails there is an alternative-

**The Keith Monks Record Cleaning Machine**



The Ultimate: a \$1400 record reconditioner that will eliminate all foreign matter from the surface and the depths where the worst kind of Gradoo hangs out.

Come in and see it work...bring your best dirty record - and this ad in today for one free cleaning.\*



309 S. Main  
\*One per customer  
Today Only

## Coffee house committee plans mini-concerts

The weekly Coffee House series will get under way Saturday with an "everybody welcome-open mike."

Local acoustic band Harmony Grits will be there to jam with any musician bringing his instrument to the SUB Vandal Lounge from 8 to 11:30 p.m. Coffee, music and a relaxed atmosphere are free for the listener's enjoyment.

The Coffee House Committee will also sponsor a series of free mini-concerts in the SUB Ballroom throughout the semester. So far, Charlie McGuire has agreed to appear Sept. 30, and Harmony Grits will be featured Oct. 14. McGuire is said to be a traditional folk singer in the fullest sense of the word. He has co-written music with

singer Pete Seeger and performs with a style that involves the audience throughout a broad spectrum of folk tunes.

Local group Harmony Grits has been together a year now, performing a variety of acoustic blues, swing, country and bluegrass blended with tight vocalizations. The instruments they use include an antique guitar and mandolin and a 150-year-old hand-made violin.

The coffee house people are planning an outdoor folk festival for Oct. 7 in People's Park. The festival hopes to attract

musicians from all over the Northwest and clinics may be held to limber up the fingers and learn new techniques.

Coffee houses have been an institution at the University for a number of years. Openness and acceptance is emphasized, providing an intimate atmosphere for bringing together new people and sharpening performance skills. An open mike begins and ends each coffee house. Magicians, comics, mimes and other whose talent lends itself to a small setting are encouraged to perform.

## Museum managing course offered

If you've ever had a desire to manage your own museum but didn't know how to go about it, you should know about the U of I's introductory course in museology.

According to Ellis Burcaw, director of the University Museum, the course will be given on Tuesday evenings from 7 to 9:40 during the fall

semester to accommodate those who couldn't otherwise attend. "Introduction to Museology" is a three-credit course.

The first session met Sept. 5, at 7 p.m. in the University Classroom Center, room 203. For more information, contact Ellis Burcaw at the University Museum.

**JOIN UP**  
Applications  
Are Being  
Taken For  
Disc Jockeys  
3rd Floor S.U.B.

**KUOI-FM**  
**STEREO 89.3**

KUOI-FM Stereo 89.3 Moscow, Idaho 885-6392

## Mini-refrigerators 2.9 and 4.4 cubic feet

Party Goods  
Carpet Cleaners  
Mirror Balls  
Roll-away beds  
Everything for weddings

If we don't have it,  
we'll help you find it.

OPEN 7 DAYS A WEEK  
113 N. Main  
882-8558

**Wood**  
**RENTS**



# Mackin

'Y'KNOW, IT GALLS ME EVERY TIME I HAVE TO PUT 30¢ IN THIS THING

YEAH



! BUT WHEN IT STEALS YOUR MONEY ON TOP OF IT... C'MON GIVE MY 30¢ BACK!!



'Y'KNOW SOMEDAY THEY'LL INVENT A VENDING MACHINE THAT WILL DEFEND ITSELF. THEN... WATCH OUT.

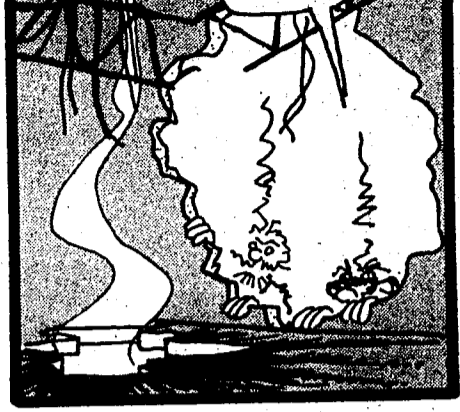


WELL IF THIS ONE DOESN'T GIVE MY MONEY BACK ITS GONNA WISH IT COULD DEFEND ITSELF.



# by mundt

ME AND MY BIG MOUTH



## Classifieds

### 7. JOBS

**Needed: Part and full time experienced TV, radio and stereo repair person, 882-4316, 107 East Sealand.**

**Looking for part-time work?** McDonalds restaurant is now hiring part-time and full-time help. We will be happy to work around any schedule. Apply today at McDonalds, 1404 Pullman Hwy.

**Help wanted:** Experienced cocktail waitress. Apply at Garden Lounge, Moscow Hotel between 11 and 3.

**Feature writers wanted for North Idaho's newest tabloid newspaper.** Should have knowledge of 35mm camera. Back-to-land, how-to features and columns needed. Rural, alternative lifestyle theme. Write Barter Times, P.O. Box 1117, Bonners Ferry ID 83805.

**WORKING MANAGER, TOP HAIR CUTTERS** We are ready to open Regis Hair Stylists in Moscow Mall. We need a working Manager, plus a staff of hair cutters capable of doing the latest, quickest service and cutting, blow and go styles. Opportunities Unlimited!!! Top commission, guaranteed salary, vacation pay, bonus point program. In addition to everything above, we offer continuous training by our traveling Styles Director. If you are into hair, if you are good, if you want to advance in our profession, apply at Regis Hair Stylists. See Sharon Lamberson, Moscow Mall, September 14 and September 15 from 11 a.m. to 5 p.m.

### 8. FOR SALE

The **Paperback Exchange** has paperbacks, hardbacks, comics, and magazines for sale or trade. Open 11 to 6 Mon. thru Sat. Beside the Micro Movie House.

**Turntable Special:** Philips 437 with AKG PGE. \$169.00-Now \$89.95. Stereo Plus No. 143 Grand, Pullman.

Audio equipment 10-40% off list. Most brands represented. For quotes call 882-6567.

**Stereo Sale**  
Stereo Plus, Pullman, 564-9222.

**Cassette Decks**  
Stereo Plus, Pullman, 564-9222.

**MICRO CINEMA**  
230 West 3rd, Moscow

Sept. 7-9, 7:00 & 9:45  
**THE TREASURE OF THE SIERRA MADRE**  
Midnight Sept. 7-9  
**HARD CANDY**

Sept. 10-13, 7:00 & 9:45  
**PRETTY BABY**

For Further Details Call  
882-2499 ext. 415

### Speaker Systems

JBL, Bolivar, Epicure, Marantz, etc. Stereo Plus, No. 143 Grand Ave., Pullman.

### Car Stereo Systems

High end or budget. Stereo Plus, No. 143 Grand, Pullman, 564-9222.

**Yard sale—Come rain or shine—Must sell—plants, wood heater, range, washer/dryer, dishwasher, Serta kingsize bed with bedding, tables, chairs, desk, pew, books, curtains, clothing, baby items 0-6X, toys, studio bed, tools, collectables. Easy to find, 404 Pine, Troy. 835-3491, Sat. and Sun., Sept. 9 and 10. 9 a.m.-dark.**

King size bed. Firm mattress, box springs and frame. Excellent condition. Must sell. 882-8183 after 7 p.m.

**Yard sale Saturday and Sunday, 522 South Monroe 9 a.m.-7 p.m.** Books for serious readers. Art-pictures, some records also. 78's, collector's items. Some stamps and miscellaneous.

**Dressed sheepskins, hair-on deer, elk, coyotes, fox, etc. Buckskin, latigo leather, strap leather. Moscow Hide and Fur, North Polk extension, Moscow, Idaho, 83843. Phone 882-0601.**

### 9. AUTOS

1975 Datsun B-210 hatchback, new engine, excellent condition. \$2,350. or make offer. Call 882-2645 after 5:00 p.m. weekdays. Anytime weekends.

### 10. MOTORCYCLES

1971 Honda 450 CB. Runs great, auction price, \$350.00 or best offer by 9-13-78. 882-7794, Mike.

### 14. ANNOUNCEMENTS

Attention students: Shotokan Karate Club has its first meeting September 12, 1978, 7 p.m. in the green room (cellar) Memorial Gymnasium. Beginners welcome!

### 17. MISCELLANEOUS

**Students:** We buy bear skins, claws, teeth. Deer, elk hides, capes, antlers. Beef hides, etc. **Moscow Hide and Fur.** Phone 882-0601.

**Rent:** Outdoor equipment—tents, packs, canoes, rafts, sleeping bags, etc. 2-5 p.m. weekdays, Outdoor Programs, SUB.

**IMPROVE YOUR GRADES!** Send \$1.00 for your 256-page, mail order catalog of Collegiate Research. 10,250 topics listed. Prompt Delivery. Box 25907-B, Los Angeles, Calif. 90025. (213) 477-8226.

**FLIGHT INSTRUCTION—Basic,** advanced, instrument, introductory lesson, \$10. Information free! McCue Aviation Services, 882-1085 evenings.

A Show of Hands classes beginning soon. Weaving, spinning, batik. Basketry, knitting, crocheting. Call for schedule. 882-6479, 203 So. Jackson.

## Nelson to edit library magazine

Milo G. Nelson, University of Idaho humanities librarian, will become editor of the Wilson Library Bulletin at the end of this month.

The magazine, published by H.W. Wilson in New York City, is termed one of the two most prestigious library

publications in the United States. The publishing company is well known for its library indexes, reference and periodical publications.

Nelson has been at Idaho since 1970. He holds degrees from Drake University, Des Moines, Iowa, and the University of Wisconsin.

## JOHNNIE'S RESTAURANT

**& LOUNGE**

Breakfasts  
Lunches  
Dinners  
Steaks

6:00 a.m.-1:00 a.m. Mon.-Sat.  
8:00 a.m.-12:00 p.m. Sun.

**Welcome Back!**

226 W. 6th Halfway between town and campus

## Library book sale set

University Library will conduct a bargain book sale next Wednesday from 8 a.m. to 6 p.m.

The sale will be in the reserve book room on the ground floor of the library. Books withdrawn from the library's collection and other books received by the library but not retained, will be sold at prices from 5 cents to \$10. The average price, according to a library memo, will be 25 cents.

Several book sets and encyclopedias also will be on sale, as well as some magazines.

Approximately 3,000 books will be on sale on a first come-first served basis. The library said it will accept cash only and there will be no limit to the number of books a person may buy.

Proceeds will go towards buying new library materials.

## Shear Shop

Mary A. Kerins

Former instructor of Mr. Leon's School of Hair Design & Stylist at Headquarters of Pullman.

Offering Uni-Sex Precision Haircutting & Styling featuring Redken, Jerhimack, Apple Pectin

Let's Get Acquainted!

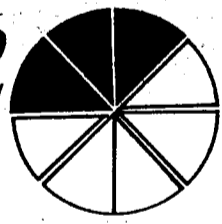
Call Us Today!

Mary & Lorraine

882-3502  
304 W. 6th, Moscow

Mon.-Fri. 9-5

## KARL MARKS PIZZA



1330 Pullman Road

"Menu"

Regular or THICK CRUST PIZZA

Canadian Bacon Smoked Oyster  
Pepperoni Shrimp Onion  
Mushroom Anchovie Cheese  
Sausage Sauerkraut Olive  
Beef Green Pepper  
Tomato Pineapple

Try our House Combinations or make one of your own  
Hot & Cold Subs - Salad Bar  
Luncheon Specials - Beer - Wine - Soft Drinks

### SPAGHETTI FEED

Every Tuesday 5:00 p.m. - 9:00 p.m.

\$2.00 - All the Bread and Spaghetti You Can Eat; Comes with 1 Dinner Salad

Phone 882-7080 for

**FREE DELIVERY**

After 5:00 p.m. in Moscow



*I have more  
confidence... if I'm happy  
with the way I look...  
I don't like to stand out.  
I like to feel  
good.*

clothing to express the woman you are

# suavé

suave announces its opening  
121 east fourth street, moscow, across from city hall