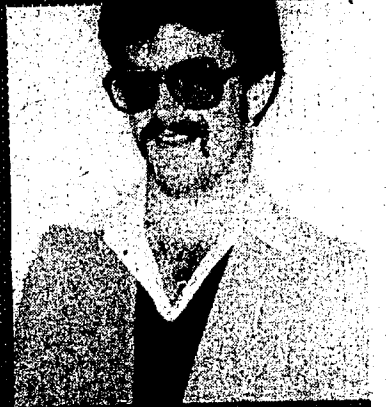


Meet The Candidates

Neil Rice
President

Eric Stoddard
President

Jeff Thomson
Vice President



Clark Collins
Vice President

Tammy McGregor
Senator

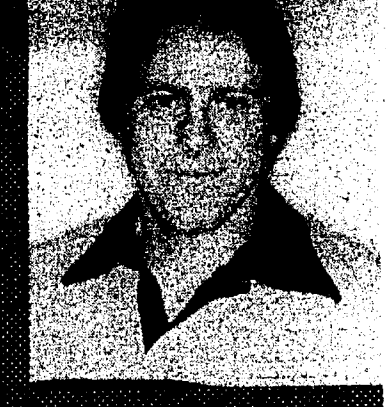
Martin Behm
Senator



Peter Becker
Senator

John Derr
Senator

Mike Smith
Senator



Greg Cook
Senator

Melissa Friel
Senator

Kevin Grundy
Senator



Scott Biggs
Senator

Kleth Kinzer
Senator

Dave Cooper
Senator



Argonaut

Editor

Diane Sexton

Managing Editor

Kristen Moulton

Copy Editors

Kathy Barnard
Donna Holt

Entertainment Editor

Linda Weiford

Sports Editor

Bert Sahlberg

Reporters

Debbie Brisboy
Betsy Brown
Suzanne Carr
Deborah Cook
N.K. Hoffman
Mary Kirk
Sandie Major
Dave Meyer
Helen Meyer
Gwen Powell
Tracey Vaughn
Kevin Warnock

Advertising Manager

Rosé Schumacher

Advertising Assistant

Teri Keithly

Advertising Sales

Cathy Clark
Janet Henderson
Bryan Hopla
Mary Snider

Photo Bureau Director

Michael Borden

Photographers

Bob Bain
Deborah Gilbertson
Patrick House
Jim Johnson
Mary Kirk
Gerard Quinn
Rodney Waller

Graphic Artists

Jeff Benham
Dave Combs
Janis Jolly

Production Bureau Director

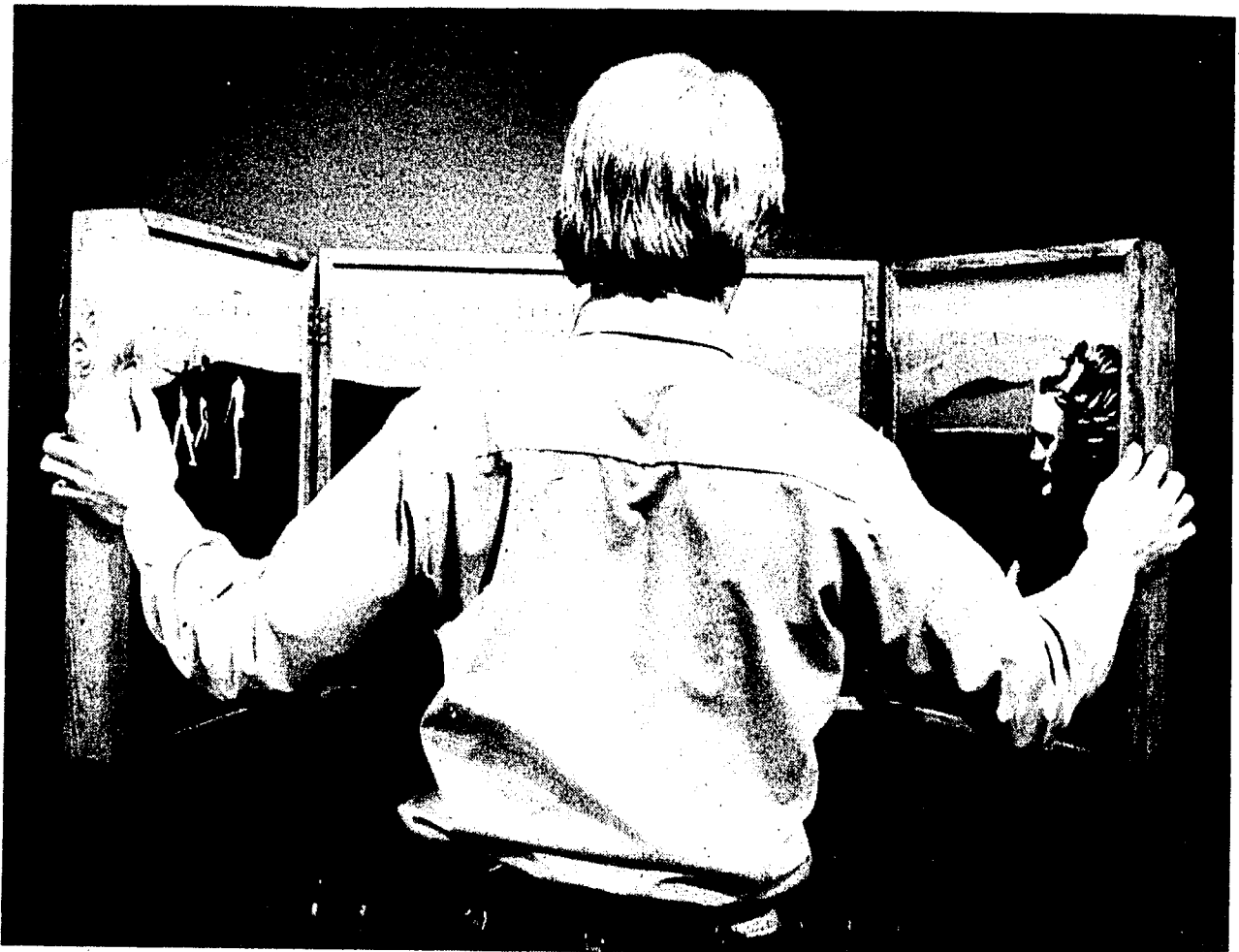
John Pool

Production Staff

Judy Burford
Nancy Denney
Mark Erickson
Jim Johnson
Keith Matushek

The Argonaut is published twice weekly during the academic year by the Communications Board of the Associated Students University of Idaho. Offices are located in the basement of the Student Union Building, 620 Deakin Street, Moscow, Idaho 83843. Editorial opinions expressed are those of the Argonaut or the writer, and do not necessarily represent the ASUI, the U of I or the Board of Regents. The Argonaut is distributed free of charge to students on campus. Mail subscriptions are \$6 per semester or \$9 per academic year. Second class postage is paid at Moscow, Idaho. (USPS 255-680)

Promised as "slightly bizarre," the undergraduate art show will start Saturday in the U of I Gallery. David Kimzey hangs a picture for one exhibit.



Argonaut Photo/Deborah Gilbertson

\$2⁰⁰ per person for 18 holes

miniature
GOLF

Mon-Thurs 10 a.m.-10 p.m.
Fri-Sat 10 a.m.-midnight
Sun - noon-9 p.m.



P and Z recommends university zone

The Moscow City Planning and Zoning Commission Wednesday night passed on to City Council an ordinance creating a university zone.

The new zone, if approved, will take the place of the current multi-family housing zone.

"This provides us with as much control as in the past and puts into city law the fact that any new development will be identified, the

city notified, and a process will be created to discuss the development as it affects the city," said Dick Fryhling, city planner.

Because of the unique uses of university land, a new zone had to be created, commission members said. The change was initiated as part of the effort to bring zoning ordinances up to date with the new comprehensive plan.

Included in the ordinance is a provision that the university will notify the city when it plans any new or expanded use of land in the zone that could have an impact on water resources, air quality, visual environment, public utilities, surrounding land uses, streets or parking facilities.

The types of uses that will from now on be permitted on university land are: residential facilities, bookstores, student unions, theaters, recreation facilities, administration offices, teaching and research facilities, libraries, farm buildings, warehouses, maintenance buildings, utility structures, and any other facilities that are necessary for the university.

Commercial activities not related to the university will be pro-

hibited in the zone, so any university land sold or leased for businesses will have to be re-zoned.

"One of the main reasons we identified this as a separate zone for the university is that the one assigned to it did not fit," said Paul Blanton, head of the Department of Art and Architecture and commission member.

Several legal questions as to whether the city could force the university, a state-owned institution, to comply with zoning ordinances have not been answered by the commission.

"This may not have much fact in law, but at least we are identifying the university as a different zone," Blanton said.

Bill Voxman, associate professor of mathematics and member of the commission, called the ordinance a "good faith" ordinance.

If some time in the future, the university or the city is "stung," then the commission could consider revising the zoning ordinance, Voxman said.

Nels Reese, university planner, told the commission the Campus Planning Committee agreed the ordinance would be beneficial for both the university and city.

"It is a step forward. We are anxious to go ahead and make it work better than in the past," Reese said.

Applications Accepted for ARGONAUT EDITOR

ASUI Comm. Board is now accepting applications.

Recommended qualifications:

- Previous newspaper experience
- Previous Argonaut experience (preferably in management)
- Knowledge of libel law
- Previous photo experience
- Knowledge of budget procedures

Applications may be picked up from the ASUI Secretary in the ASUI Senate Office.

Closing Date Nov. 28th

MIKE SMITH FOR SENATE



ASI leaders to meet with Board of Regents president

ASI offered free study; consults firm

by Mary Kirk
Staff Reporter

On behalf of the Associated Students of Idaho, a Boise law firm will do a free preliminary study on a possible lawsuit against the State Board of Regents' proposed \$50 fee increase.

Meeting in Boise today to consult with the firm, the student body presidents of Idaho's four institutions of higher education will also meet with Janet Hay, board president, in what Hay calls a strategy session.

According to ASUI President Scott Fehrenbacher, the law firm of Holley, Troxel, Enis and Holley will advise him and the other presidents on several things about a possible lawsuit. These include:

- their opinion on the case
- how long the case would take
- the direction the case would take
- advantages of the case
- disadvantages of the case.

Concerning a possible injunction to halt a fee increase until legislators had decided the tuition/fee question, Fehrenbacher said there are a couple of things to be considered.

Would stopping the fee help or hurt students in the long run? Should the ASI go ahead with the suit and let fees be assessed next semester to help cover funding shortages? Or should the ASI be consistent with a suit and file an injunction anyway?

A possible lawsuit by the ASI is an obvious

Supreme Court case, the law firm has said, according to Fehrenbacher. And although the case wouldn't necessarily start there, it would end up there.

Fehrenbacher also said the firm has estimated a \$20,000 absolute base cost. But because the ASUI, of the four schools, is in the worst financial condition, Fehrenbacher said the cost of a suit could be prohibitive. He said the losses from the cancelled Atlanta Rhythm Section concert were one major factor.

The meeting with Janet Hay, Board of Regents president, will be this afternoon, after the group has consulted with the law firm.

According to Fehrenbacher, Hay wants to meet with the four ASI representatives in a strategy session. She wants to negotiate with the group to reach a compromise on goals before the December meeting of the board of regents; so that everyone will be fighting for something together. Hay is concerned that higher education stands to lose if it isn't unified, Fehrenbacher said. "And the bottom line is that students lose." He said it's important to note that students have never been invited to a meeting with a board of regent member.

The initial decision to seek legal advice on the constitutionality of a fee increase and the definition between fees and tuition came out of the ASI's first organizational meeting in October. All four schools, the U of I, BSU, ISU, and LCSC endorsed seeking the advice.

KUOI students: confusion less, waivers granted

Confusion surrounding the status of the seven students found last week to be technically ineligible for employment at KUOI has been at least partially resolved.

Communications Board Chairman Harvey Skinner said waivers will be issued to the students permitting them to work through Jan. 31. The waivers are being granted to avoid disrupting station operations.

"Three fourths of our managers don't meet the requirements," Skinner said, adding that to bring in new people at this time would only aggravate the situation.

The decision to waiver the students was made at a Communications Board meeting this Tuesday, according to Jennifer Smith, KUOI station manager. She said solicitation for new personnel will begin within a week.

Skinner said the new personnel will have to meet slightly different requirements. Current bylaws governing student media employment require ASUI membership and enrollment for at least five credits. The changes will increase the credit requirement to six, or half-time status. "We're trying to avoid the people who sign up for a one-credit PE class just to get the job," he said.

The two regulations, ASUI membership and a six-credit minimum load, apparently conflict. Presently, only full-time students qualify for ASUI membership. Skinner said the station manager can either seek waivers for part-time students until a fee schedule change qualifying them for membership becomes effective next summer, or employ only full-time students. "The main thing is to get students in there," he said.

U of I AFROTC - Presents -

"A Night On The Town Raffle", Yes, the lucky winner of this Raffle and a friend of his or her choice, will be entitled to:
Dining at Mark IV Restaurant,
A Feature film at Kenworthy Theatre
Drinking & Dancing at Cavanaugh's Landing Nightclub
on the Enchanted evening of Fri., Dec. 5th.

Tickets are available either at the AFROTC lounge (in Continuing Ed. Bldg) or from sharp looking AFROTC Cadets, are going fast at 50¢/chance. Procrastinate no longer, buy now! Winner to be announced 2:00 p.m., Nov. 21; raffle ends Thurs., Nov. 20.

Two senate bills to be reviewed

Two bills have been sent to the ASUI Senate Rules and Regulations Committee. One-if passed, will expand the ASUI Communications Department to include the Polls and Survey Bureau and the other would change the current sequence of operations of Communication Board appointments.

The Polls and Survey Bureau will be operated by the ASUI and

will involve faculty to teach the needed skills, check the accuracy of the polls or surveys and check the results.

Official polls and surveys will be limited to university and ASUI business only, and all polls and surveys must be authorized by the senate through a resolution.

The bill regarding Communication Board appointments changes

the system so that an appointment will be sent to a special committee if rejected twice by the president, and finally will be sent to the senate.

If the senate rejects the appointment the candidate is no longer eligible for the position.

The bill was designed to broaden the delegation of who decides who does what for whom.

EARTHS HISTORY & FUTURE IN PROPHECY

In the book of Daniel (written about 535 B.C.) you will find the basic outline of history foretold in prophecy. Only God can foretell the end from the beginning (Is. 46:9,10). And that "First of all you must understand this, that no prophecy of scripture is a matter of ones own interpretation" (2 Pet. 1:20). Prophecy, explains itself.

In Daniel ch. 2 an image is seen (Dan 2:31-35) that represents the kingdoms of the world (Dan 2:36-45); it has a head of fine gold, breast and arms of silver, belly and thighs of bronze, legs of iron and feet of iron mixed with clay-then a stone cut out without hands strikes the image on its feet and destroys it. Note the degeneration of the metals from the highest quality to the lowest-symbolistic of the decline character of the empires. The interpretation begins in verse 36 "You O King, are this head of gold, and after you another kingdom, and yet a third kingdom. And there shall be a fourth kingdom, and the toes are divided gold, and after you another kingdom, which shall not be destroyed." History identifies these kingdoms: the kingdoms and in those days God will set up a kingdom which shall not be destroyed." History identifies these kingdoms: the head of gold is the Babylonian Empire (606-539 B.C.). The silver arms and breast was the Medo-Persian Empire (539-331 B.C.). The belly and thighs of bronze was the Grecian Empire (331-169 B.C.). The legs of iron represent the Roman Empire (169-426 A.D.). And the feet of iron and clay has 10 toes illustrating the breakup of the Roman Empire. We also know God has not yet destroyed these kingdoms (that are divided) or set up his kingdom.

Daniel ch. 7 further clarifies these kingdoms. They are symbolized as beasts. The first is a lion with eagles wings-both are superlative in the animal kingdom, just as gold is the finest metal-this represents Babylon-also recent archaeological discoveries have unearthed Babylonian coins stamped with a lion that has eagles wings! The bear is symbolic of the bloodthirsty coveries have unearthed Babylonian coins stamped with a lion that has eagles wings! The bear is symbolic of the bloodthirsty character of the Medo-Persians, and the 3 ribs in its mouth accurately describes its conquest of Lydia, Egypt and Babylon. The leopard with wings describes Greece, and its swiftness of conquering the world. The iron tooth beast describes Rome with ten horns-the parallel between the toes and horns is obvious-its strength and fierceness are characteristics attributed to it. Then a little horn (kingdom) comes up and destroys 3 horns (kingdoms v.24) on its rise to power. This power makes war with the saints (v.21) (Rev. 14:12 saints-those who keep the commandments of GOD and the faith of Jesus). Also this kingdom will speak words against God and think to change the times and the law. Rev. ch. 13 expands on this power, using the symbolism of the beasts we just discussed. This power blasphemes (making itself God-Jn 10:33) this is the development of a religious system arising from Rome. The little horn, rising out of pagan Rome, is described as an apostate religious power, that ultimately substitutes human laws for Gods laws and sets up a human religious system and finally persecutes the people of God. Also, it is estimated that between 50-75 million people have lost their lives at the hands of this religious power. What power is it? This, you can figure out! Sponsored by "the wayout" P.O. Box 8905 Moscow Id 83843.



BURRITO SPECIAL

NOVEMBER 14-26

BEAN BURRITO 69¢

BEEF BURRITO 79¢

TRY TACO JOHN'S-

We're Open 'Til 1:30 a.m. everyday (except Sunday til 11 p.m.)

commentary

You've got your chance!

Something good is going on this week, and students who have the chance to take part shouldn't pass it up.

The Retention Committee (a rather ostentatious title for a committee that wants to keep students happy) was appointed a year and a half ago by President Gibb. Now the committee is surveying 500 students to find out how they've been served by the university in their time here.

The survey, passed out in selected classes this week, asks questions on just about every area of university life.

The results of the survey will be used in two ways: to identify the weak (and strong) spots in services to students and to find out what the university needs to do to keep students from dropping or flunking out.

One weak area the committee expects students to point to is academic (and personal?) advising.

The advising system in many colleges and departments is haphazard, inefficient and not so helpful to students. This week's survey may show more specifically what is wrong.

That's why it's important for those students who've been asked, to let faculty and administrators know what the problems are. If you were given a survey form in one of your classes this week, take it back to the instructor today. If you can't turn it in today, do it next week.

Students many times aren't given much chance to comment on issues that concern them. Let's not ignore the sincere effort of faculty and administrators to find out how they can make this place more hospitable to students, more bent on serving us.

Kristen Moulton



Myrtle Greenwich is back— bigger and “bunnier” than ever

Myrtle Greenwich

A newspaper is supposed to be filled with sex and juicy scandals so that the people who get up in the morning and read it can have something to get their blood going a little bit.

The *Argonaut* is dull and stupid and boring and really needs help bad which is why I decided to come out of retirement.

My name is Myrtle Greenwich and a couple years ago I wrote columns for the *Argonaut* and I was famous and got lots of hate mail. But I got bummed out and quit writing because people said I don't really exist and also because the editor said I couldn't write anymore unless I passed English 104. And I took English 104 at least four times and couldn't pass it so that was that. Tough bunnies.

Tough bunnies. That is the subject I want to write about in my column today because it is a good juicy scandal and because it is a serious problem that should

be brought to the attention of everyone and their pet hamster.

I have this friend who is a mild-mannered reporter for the *Argh*. Betty (not her real name) has this irrational fear of rabbits. Why she has this fear I don't know but I guess it has something to do with her upbringing.

Betty was raised up in a big city on the East Coast and we all know what that does to a person. She probably didn't ever learn how to tell the difference between a bunny and a sewer rat. And I tell you, you'd be afraid of bunnies too, if you thought they were sewer rats. What if a bunny swam up through your toilet and started chewing on your shower curtain? I bet you'd be scared to death too.

Anyway, this Betty person was walking down the street near the SUB minding everybody else's business, which is what a reporter does anyway.

She was just strolling through the parking lot enjoying the scenery when about 20 wild and ferocious rabbits leaped over the banks of Paradise Creek and started to snarl at her.

Now if Betty didn't have this irrational fear of rabbits, she would have done what any sane person would have done and try to reason with these creatures. As everyone knows, even a rabbit gone bad wants to be treated like a human being.

If Betty had invited them all down to the Garden for

rum-and-carrot juice, they could have all been friends. And that would have been that.

But instead, Betty took to her heels and ran her little buns off. Well actually to be completely accurate, the little buns ran her off. She ran for hours until she happened to pass a friendly Doberman Pinscher who chased away the nasty bunnies.

Anyway, one of the rabbits dropped secret identification papers that indicated that all 20 rabbits were part of a commie plot.

Maybe you remember a while back President Carter was attacked by a rabbit on a canoe trip. Well, these rabbits were all parts of the same spy ring. They decided to start working in Moscow because they thought a revolution should always start in Moscow.

Well Betty called up the police and the FBI and they just laughed at her which probably shows they've already been infiltrated.

Speaking of infiltration, I thought you ought to know, the Playboy Club and Easter and Bugs Bunny are all part of a devious commie plot. It's a proven fact.

So thank the Goddess for Ronald Reagan. Now if that doesn't get your blood going in the morning you must either be dead or awfully hung over.

Myrtle Greenwich is a former student activist and Argonaut columnist. She was an unsuccessful candidate for ASUI president in 1978.

letters

Take your seat

Editor,

Being a freshman and not knowing that saving seats is not allowed in the Kibbie Dome, I agreed immensely with Ms. Vance's letter in the Oct. 24 issue of the *Argonaut*. I too have been confronted with this same situation leaving me confused, embarrassed, and seatless. At one particular game I tried in five different areas to find a seat for a friend and I, each time being told "These seats are reserved."

I feel it is very unfair to save endless rows of seats, regardless of which fraternity they are for. I strongly believe that we should enforce the first-come, first-serve method or have a maximum amount of three rows for each frat, sorority or hall or some arrangement other than the current method we are using.

A pamphlet entitled "Costs" put out by the University of Idaho this summer states that when each student pays for registration, included is a fee which enables him to enter all athletic events free of charge. Therefore, since frat members pay the same registration fees as anyone else, we have just as much right as they do to sit where we please.

Eye-strained, twenty-yard line spectator,
Janice Galloway

Texan seisure

Editor,

Re: Steve Symms elected senator.
Is it probable, within six years, that influential Texans will be "living in their own private Idaho?"

Greg Plumb

Myopic void

Editor,

In reply to a letter concerning KUOI from a Mr. Jennings.

Mr. Jennings,

Granted, you and your fellow "sophisticates" may possibly have a strong grasp on your own particular type of music, but are given to scorn

and dismiss a myriad of other styles of music which, presumably, have not been force-fed to you. A void, consisting of more types of music than I would know to include, is left to develop and grow beyond measure. As a student, don't you feel a responsibility towards learning? Why this reluctance to expose yourself to different attitudes, styles, and tastes? I'm not asking that you diligently pursue all facets of music, but merely suggesting you take advantage of a service so easily afforded...while you can.

Additionally, I was curious about your statement "Any station that claims it doesn't have enough money to purchase records shouldn't be on the air." Does your image of money as an abundant commodity stem solely from your own experience, i.e. Dad's wallet? I hope you can realize, before it is too late that in the real world (out there beyond Deacon Avenue and Sixth Street) the rules and conditions are different. This case of myopia you seem to exhibit will surely be your downfall if such a realization is not made.

Doug Browne

Trouble shooter

Editor,

"To be credible student government must be service oriented." That's the opinion of Mike Smith, candidate for the ASUI Senate.

It may be more important to help someone — find out how to write a petition for a change of an academic rule — than to get a bill passed in the student senate.

It may be more vital to get the lights turned on for a tennis court, or get carpeting in the Library, or get the gym to stay open an hour longer on Saturday, or even to get Dorm Housing to be more responsive than to see a senator's picture in the *Argonaut*.

Dealing with people problems — maybe the word is "responsive," that's the picture I get of Mike Smith.

The Swedes have a term for it: OMBUDSMAN, a trouble shooter to find out who has the responsibility and authority to help get a job done.

That's why I'm voting for Mike Smith.

Bruce DeLeonard (off-campus)

Exit quality?

Editor,

I was disturbed tonight (Nov. 11) to hear that the goal of university policy is the abolition of tenure. The speaker, W. Lee Eckhardt of the U of I law school, was clearly concerned. As well he might be. He was putting his job on the line. The university administration is not likely to be happy with Mr. Eckhardt after they failed this week to get a court order to restrain him from speaking.

Eckhardt argued that the free exchange of ideas, innovative programs, faculty morale, and the quality of education at a university were intimately related to the availability of academic tenure. He said that during the past five years, he had seen university policy on tenure seriously undermine the traditional goals of university communities: Mr. Eckhardt also indicated that while many universities were experiencing similar problems, academic freedom, faculty morale, and the quality of education were deteriorating here more quickly than elsewhere.

Professor Eckhardt pointed out that there is widespread misunderstanding about the exact nature of tenure and fear that it is being abused. It appears that instead of alleviating the confusion, a fearful administration has rushed to abolish tenure and tried to seize an opportunity to get rid of a tenured professor of 16 years before giving him a fair hearing.

I would like the administration to explain how it hopes to abolish tenure without causing a decline in the quality of education at Idaho. My professors are not bums. I think they deserve an answer. And as a student and taxpayer, I want one too. Recently, the administration has had trouble explaining its procedure and policy for closing streets and the need for the East End Addition. I hope that tenure will not present another problem of such insoluble proportions. In any

event, I entreat the administration to schedule a dialogue with the university community on this subject. I trust that Mr. Eckhardt will not get a court order to stop the administration from clarifying its position.

Tim Gallagher

70's mire

Editor,

There are a few things I'd like to add to Lee Anderson's article which mentioned me (KUOI Dismisses Promo Director).

I donated my time to fill a position that nobody wanted.

My phone bill was for authorized KUOI business.

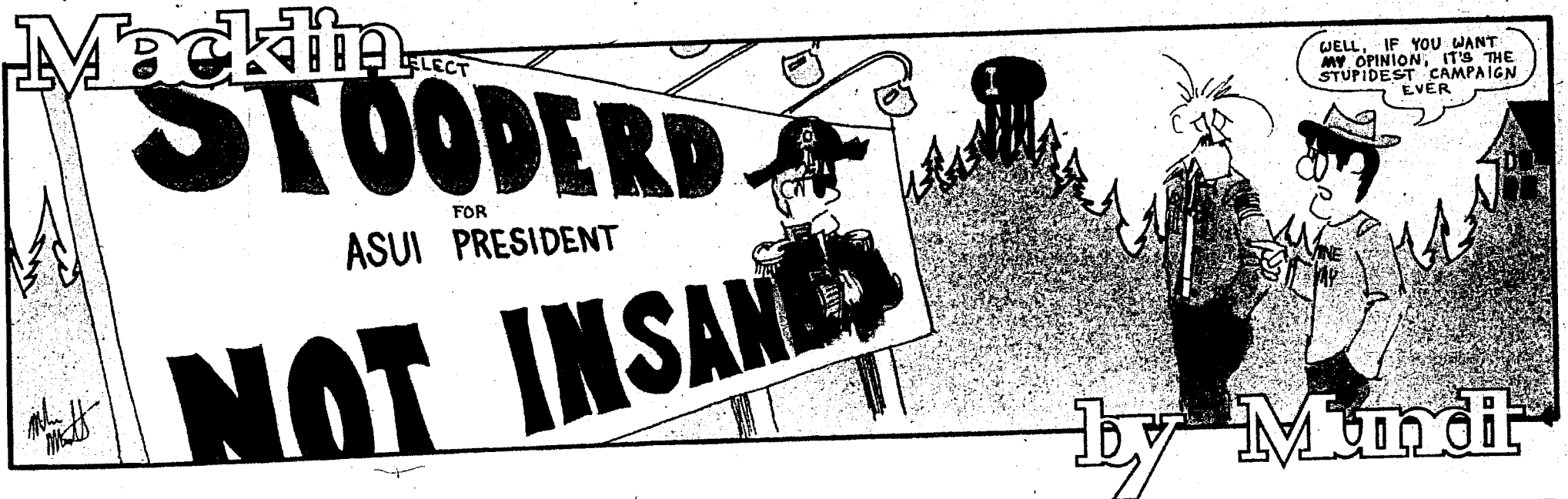
My sole responsibility as promotions director was to try and bring musical acts to this area through commercial channels—specifically, Modern Productions of Seattle. MP gets in touch with me when they think they have a show that would do OK out here (not well, just OK; at this time, they're just trying to establish an audience). I do the footwork, ie, find a suitable venue, sound, lights, etc.

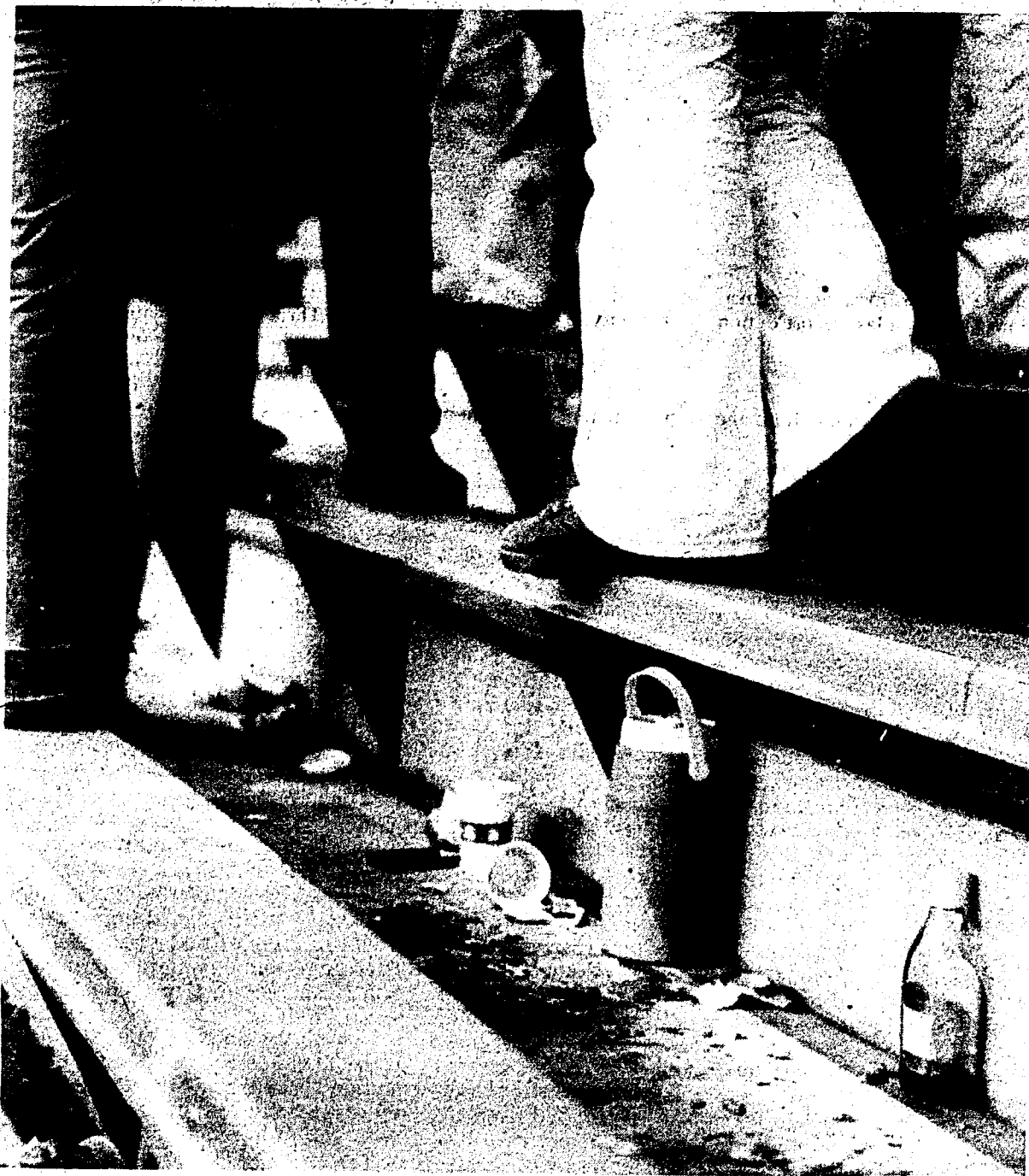
How does KUOI fit into the picture? The station's name gets billed as a co-producer. Free advertising. "Promo Director" was just a title. I can do what I'm doing with or without it. I can offer co-production status to any station I want. In short, my being "fired" means nothing.

I didn't even give it much thought when Jennifer Smith told me that I couldn't keep my title. Apparently, there are a few "concerned" students who felt otherwise. Perhaps these "concerned" students should first look into the flakey procedure your student government goes through to bring concerts out here then maybe they'd appreciate my attempts to get an agency to take all the financial responsibilities of a show.

I like your school, I love KUOI, but it's a shame that a few boneheads are in key financial positions, because they've really helped keep your university mired in early '70s mentality.

KUOI is the best thing you've got, whether you know it or not.
Victor (note the spelling, Lee) Vinson





Argonaut Photo/Mary Kirk

U of I students say it is "common knowledge" that they can bring alcohol into the dome in soft or plastic containers and they question how enforcement should be handled. This is the final part of a two-part analysis on "Booze in the Dome".

Included below is the final part of a two-part analysis on drug use and drug abuse.

Drug abuse up, risks high

by Lee Anderson
Contributing Reporter

The medical and health professions' stand towards the increase in drug use in America varies, but increasingly their attitude seems to be one of acceptance.

Dr. Pete Miller, an M.D. and associate professor of psychology at the U of I, says telling "a crowd of new freshman" not to use drugs is ignoring the reality of the situation. Miller stated he has used drugs in the past, but, "The more I learn about the nature of the mind, the more 'anti' I become as far as drugs are concerned." He said in the event he was asked to talk to new students about the use or misuse of drugs, he would probably emphasize the risks involved in the use of street drugs, and therefore stress the importance of making their own decisions in this area, instead of just "going along" because of peer pressure.

Miller teaches a class titled "Drugs and Psychology," using the Ray text, partly because he agrees with Ray's approach of "rational" drug use, which makes three divisions: use, misuse, and abuse, of drugs.

Acceptance of the endemic, rooted character of drug use in the United States has led to an emphasis on rehabilitation and drug education programs by official agencies, though some efforts in this direction have met with severe criticism for

being ineffective.

A variety of services is available in Moscow for those who think they may have a drug abuse problem.

The U of I operates the Student Counseling Center staffed with both counseling and clinical psychologists. The center offers help to any student who feels he or she may benefit from its services. Hal Godwin, a clinical psychologist at the center, said, "Anyone is welcome, whether it's a drug problem or a personal one. Tell 'em to come on in." Personal information released to the center is held fully confidential and will not be released without the student's permission, he said.

Nightline is an all-volunteer, 24 hr. hotline service operated out of the Campus Christian Center for those who simply want someone to talk to. Staff members manning phones are screened and trained to deal with a range of problems. The Nightline crisis number is 882-0320.

The state operates a substance abuse office in Moscow that concentrates primarily on alcohol abuse. This year the state has budgeted only \$15,000 for the area non-alcoholic abuse program and \$230,000 for alcohol abuse. Norma Jaeger, Regional Health Programs Manager, said most of the money for both programs is federal in origin, and the government tends to concentrate its spending in urban areas where the drug problem has much higher visibility and magnitude.

Alcohol Game

With dome crackdown, football players not only ones playing games

Analysis

by Dave Meyer
Staff Reporter

There's a new and challenging game being played at the dome during football games these days. It's called "Alcohol Hide-N-Seek."

This seems to be a challenge to both the "hidiers" and the "seekers." The game does not use a playing board as in Monopoly and there is not too much "risk" involved. But there is lots of ingenious paraphernalia used, and many places to hide the pieces of the game.

More people have begun to play the game because of the increased degree of alcohol enforcement during the football games. According to student reports, the enforcement ranges from being asked about the contents of a container to a physical partial "pat-down" by the dome security guards.

Many student opinions have been expressed about this increased enforcement. Former ASUI Senator Bob Crabtree said, "The students deserve to know why the regulations are being enforced now."

Many students have also said they were checked more tightly at one gate than another. For this reason a student who is rejected at one gate for refusing to discard his alcohol can simply go to another gate and be let in. Another student said in order to get your booze in, just let your girlfriend take it in for you. However others said the security guards at one gate were having female guards checking the female patrons. The players of the game increase in number and new strategies are introduced.

The largest number of complaints concern the equality of enforcement at each gate and the fact that "it has been common knowledge that you can get into the dome with alcohol" as long as it's in a plastic or soft container. And now all of a sudden a "crack-down" is imposed so the game of "alcohol hide-n-seek" is in full swing.

According to Ed Chavez, dome manager, there is equality at the gates with regard to the degree of enforcement. However, he said since there are different people at each gate there is always going to be a certain amount of variation. "I can't be at all four doors at the same time," he added.

Terry Armstrong, executive assistant to the president, said, "I would hope that it's being enforced equally." He added, "I assume that there is a training regimen for all of the employees" at the dome who work at the gates. He also said that he has received complaints and intends to look into the problem of unequal enforcement. He does maintain however that the enforcement of alcohol regulations needs to be as strict as possible for everyone.

More glass and metal containers are being brought into the dome because of the stricter enforcement said Scott Fehrenbacher, ASUI president. He said because it's easier to conceal pints of liquor and small cans, searches act as an encouragement to bring in this contraband. The other problem, according to Fehrenbacher, is that the students are guilty until they prove themselves innocent at the gate.

Actual reasons why the dome security is "cracking" down on alcohol is probably different from what most people would think. Chavez maintains he has not told his security personnel to do anything different than they have in the past. The stricter enforcement stems from the security guards themselves and how ambitious they are in their work. The crackdown seems to have originated with the two security guards who are in charge at the games, Ray Gibson and Frank Aichelmann.

Gibson said he and Aichelmann just started to do the job for which they are hired, to attempt to keep alcohol out of the dome. Their enthusiasm for their work has encouraged about half of the dome security to do a better job, Gibson said.

Some of the guards don't have the initiative that others do in confronting people at the door, Gibson said. Everyone is supposed to check at the door in the same way, but some of the guards just don't want to be in the position of confronting people with a controversial subject like this, he added.

With the last home football game Saturday and the alcohol policy in full swing, everyone will wonder how it will be handled next year or at the basketball games. The administrators say they will keep "quality people" in the security guard positions for the strict enforcement to continue to be in effect.

As long as alcohol is prohibited in the dome, some students will be playing the game of "alcohol hide-n-seek" and with stricter enforcement, the rules of this game will become more and more complex with the players working harder to "over-come" their respective opponents.

Candidates tell all: tuition, ASI hot issues

Editor's Note:

Following are short essays provided by ASUI candidates in which each says what he or she thinks are the important issues to U of I students. The Argonaut edited for spelling and style, but did not attempt to make changes in grammar or facts.

Nell Rice President

I am against the institution of tuition. Once in force, in-state tuition would become permanent. I feel the legislature would tend to increasingly demand more financially from the students (who are the least able to pay). The Associated Students of Idaho are currently receiving free legal advice from a Boise firm regarding the constitutionality of the proposed \$50 fee increase. Should the regents attempt to implement this fee increase, I would support this group and be actively involved in filing a lawsuit questioning the legality of such a fee.

Communication, I feel has been lacking between the students and faculty on several occasions. There are many problems that affect both groups, such as budget cuts, parking and road closures. By improving communication and creating a liaison between these groups I feel we can better work toward solutions to these problems as well as to more scholastically oriented problems.

Right now we are faced with a serious problem concerning the safety of women. I propose the organization of a "screened" escort service by means of which women could have more freedom and safety to walk and use university facilities at night.

A review of all ASUI programs should be undertaken and an evaluation of their purposes made in regards to student needs. KUOI and entertainment are two examples of controversial programs. I feel that the ASUI President, Senate and Communications Board should select a manager and allow this person to run the station without interference.

Students have said they want large concerts. I'm in touch with a promoter who has suggested using Moscow as a starting point for big name concert tours at a considerably reduced cost. I would support this arrangement because we could get big name concerts with a minimal risk of student fees.

Academics and learning are the reasons why most of us are at this university. Traditionally, ASUI leaders have whispered the student's desires regarding education into the ears of the regents, legislature and administration. In essence, I feel that we as students have a voice that needs to be

heard — and I have the loudest voice!

Eric Stoddard President

The Associated Students of Idaho (ASI) has tremendous potential to benefit every individual of the 29,000 students it represents. As a charter member of both the ASI Bylaws and State Board Liaison Committees, I have established productive relationships with the members of ASI. Presently ASI is working on the following projects:

— Seeking legal advice on the constitutionality of the proposed \$50 fee increase for spring semester 1981.

— Investigating the possibility of placing a student on the Governor-appointed State Board of Education.

Future projects of the ASI include:

— Looking into price discounts for statewide scheduling of speakers such as John Dean and Eugene McCarthy.

— Investigating the problem of credit transfers from one state institution to another.

I hope to continue serving the students of the University of Idaho at the ASI meeting in the capacity of ASUI President. As single students confronted with state issues we are weak; as the Associated Students University of Idaho, we are strong; and as the Associated Students of Idaho, we are powerful, I am looking forward to maintaining that power of student communication and representation.

The proposed \$50 institutional fee increase is a misnomer. In essence the State Board is proposing tuition and trying to justify it by calling it by another name.

The fee structure that we presently adhere to as outlined in the Constitution of the State of Idaho specifies fees to be directed for student services and certain incidental expenses. By charging fees to free up state money for academic purposes, the State Board is doing indirectly what the law forbids them to do directly; that is charge in-state tuition.

Closely related to the \$50 institutional fee increase is the issue of in-state tuition. In-state tuition does not guarantee that a new library will be built, nor that the quality of education at the University of Idaho will improve. The

legislature, as a compromising political body, could easily channel the freed state funds from student in-state tuition charges to state agencies that are short of money. Thus the financial situation of this university would not change. However, every student would be assessed a greater share of the burden for higher education. Only as a last resort option would I endorse in-state tuition provided that:

— a stipulated agreement be reached which would bind the legislature and the students to proportionate levels of funding for higher education. This would protect the students from the state transferring freed funds appropriated for higher education to other state agencies.

— this agreement be guaranteed by statutory law.

— the proportionate level of funding for students would be equitable and affordable.

The \$3.50 ASUI fee increase is a crucial determinant for maintaining current ASUI operations. ASUI has operated on the \$15.75 student subsidy since 1969. Our operating budget is now \$451,000 versus \$175,000 in 1969. This two-fold increase has been directly related to the operating efficiency of our ASUI departments.

For every \$1 of student subsidy, ASUI departments generate an additional dollar in revenue that is pumped out in student services.

As a member of the Senate Finance Sub-Committee who has witnessed the budget cuts performed last year, one can be assured that without an increase in student fees ASUI will be forced to cut services and/or departments.

Clark Collins Vice President

As we approach this next year, the ASUI will be facing many issues that will require strong student input. The only way we can

obtain valid statistics relating to how students stand on various issues is to poll the campus at large. Our weakest input comes from the off-campus people and they're not to blame. It is the duty of the ASUI to carry the interest of the entire student body at the University of Idaho and at present we're only achieving half of that duty. The ASUI off-campus seminar hasn't been very effective through my year and a half term in the ASUI Senate. Approximately 54 percent of the student body resides off-campus and without off-campus support, the ASUI is only "half-dressed."

The ASUI and the U of I administration are faced with a \$3.85 million cutback which may put a crimp in programs offered through various departments. Dismissal of faculty and staff personnel may be another recourse chosen by the administration.

The Idaho State Constitution (concerning higher education), states student fees are *only* to be expended toward "student services." My interpretation of this particular section of the constitution is that monies gathered from

student fees are not to be used toward academics.

If student fees are being placed toward academics, then the universities in the state are in violation of the constitution.

Students, faculty, staff members, and the Board of Regents want to see a clearly defined distinction between tuition and fees. Through the formation of the Associated Students of Idaho (ASI), the U of I, Boise State University, Idaho State University and Lewis-Clark State College can now share common concerns such as this tuition versus fees dilemma.

The Associated Students of Idaho is composed of four delegates from each of the aforementioned universities. These delegates are the student body president, vice president, senator and student at large.

At the first meeting of the ASI, the tuition vs. fees issue was discussed. After many hours of debate, the association decided to seek professional legal advice to determine whether or not it would behoove the universities to sue

continued on page 8





Richard Dreyfuss
the Big Fix
A UNIVERSAL PICTURE TECHNICOLOUR FILM
© 1978 UNIVERSAL CITY STUDIOS, INC. ALL RIGHTS RESERVED

TONIGHT 7 & 9 p.m. \$1.25
SUB Ballroom

Excellent Atmosphere

Sandwich/Soup

Salad Bar

Inexpensive

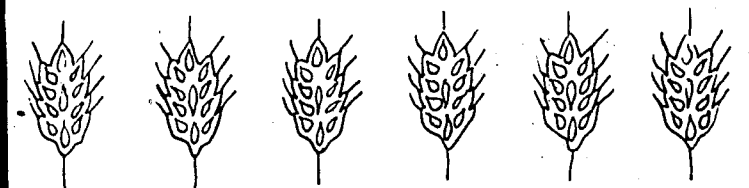
Delicious



ON-CAMPUS PART-TIME JOBS

The Production Bureau has the following job openings:
PROCESS CAMERA OPERATOR, COPY TYPIST
(2 openings), **ADVERTISING TYPOGRAPHER**
All are afternoon/evening jobs offering 4-10 hrs per week. Earn while you learn saleable job skills. For further information and/or applications, contact John Pool, 885-6371. **STUDENTS ONLY PLEASE. Applications close 12/5/80.**

SLEEPING BAG SALES: Good commissions selling top quality, triple layer, sleeping bags—rectangular, backpacker, & mummy. Sell at half the retail cost. Great on campus. Ideal as holiday gifts. Free info: **SLEEPING BAGS UNLIMITED, 105 Wolf Rd., Albany, New York 12205.**



THANKSGIVING OBSERVANCE

THURSDAY, NOV. 20th
12:30-1:15
St. Augustine Center

Fast
FAST FOR A
WORLD HARVEST

- You, yourself, give up a meal or several meals for others.
- Encourage your Living Group to give up a meal as a group, and contribute what you save to OXFAM.
- Bring your contributions to St. Augustine Center Thursday, Nov. 20th at 12:30 or mail to the Campus Christian Center at 822 Elm St.

"FAST FOR A WORLD HARVEST" offering to go to OXFAM projects to help small farmers in ASIA, AFRICA, & LATIN AMERICA. If you are unable to attend Noon Observance, you may bring your offering to the Campus Christian Center office.

This year's Hunger Awareness project is being supported locally through the placing of contribution cans at the checkout stands of the following businesses: SAFEWAY, ROSAUERS No. Main, ROSAUERS Pullman Hwy., MODERN WAY, and WAREHOUSE FOODS, as well as THE KING'S TABLE, PIZZA HAVEN, MC DONALDS, KARL MARKS, and PIZZA HUT at Moscow Mall.

SPONSORED LOCALLY BY: CAMPUS CHRISTIAN CENTER & ST. AUGUSTINE'S CATHOLIC CENTER, UNIVERSITY OF IDAHO

Candidates

the State Board of Regents in a "friendly lawsuit" in order to set a clear definition of what is tuition and what are fees.

By filling in for the ASUI's V.P. who couldn't attend the first ASI meeting, I felt that the U of I needed full representation and took it upon myself to attend that meeting. It is my hope to continue to serve on the ASI as vice president of the ASUI.

As election day draws near, I encourage students to read the *Argonaut* and pay close attention to the issues that will appear on the election ballot. The ASUI is asking students to vote as to whether they are in favor or opposed to a \$3.50 fee increase. The ASUI has not imposed a fee increase on students in 11 years, yet without this increase the ASUI departments cannot function properly. Even with this fee we will have to reduce budgets in some areas, but we will not have to cut departments and programs that we currently provide to stu-

dents.

I feel students here at the U of I are more concerned than ever about where our money is being spent and how effective the ASUI can be in carrying out student concerns. I enjoy seeing the enthusiasm and hope to serve you in the ASUI as vice president for the 1981-82 term.

Jeff Thomson
Vice President

Tuition

I am opposed to in-state tuition in any form. I think it's the responsibility of everyone in Idaho to pay for the education of its future leaders in education, business and government. That may sound selfish but there has to be some other way out of our financial crisis. An alternative solution, such as raising the sales tax one penny, isn't going to create a serious hardship for anybody. However, an increase in student fees in the form of in-state tuition is going to create hardships for many students who are working their way through college and are barely making ends meet as it is.

Campus Crime

Campus security has become a serious problem. What with bombings, arson, peeping toms, and poor campus lighting, an unsafe atmosphere has been created.

This leads to an additional, unnecessary worry and Lord knows we students don't need anything more to worry about. My solution is to create a Student Advisory Board on Campus Security. The

students are the ones who know the problem best. This advisory board could work with campus police and campus planners in dealing with the problem of security. This is one of several projects I'd like to work on as Vice President.

Communication

Communication is probably the most powerful tool that the ASUI has to work with. We must be able to communicate effectively with state legislators, the Board of Regents, and the administration. As an intern at the state capital I have worked with and know personally several of the legislators who will be very influential on the issue of in-state tuition. It is especially critical this year that we have people in the ASUI with this type of experience.

Alcohol on Campus

Another project I'd like to work on if I'm elected Vice President is allowing alcohol on campus. It's time that reality was faced. Drinking occurs on campus. During a financial crisis like the one we are experiencing right now, why not use the money raised through the sale of alcohol as a source of revenue. Sell it on the golf course, in the Dome, and in the SUB. It's been done on other campuses, why not ours? It will take a lot of convincing but let's get it started.

Banking Service to Students

Finally, another personal project I'd like to work on is a banking facility put somewhere on campus, either in the SUB or located somewhere more central to campus. This could be a 24-hour teller bank that could be used on weekends as well. There have been too many times I've raced the clock on a Friday afternoon to get to the bank before it closed or

I didn't go to the bars or to the movies that night. This is a service we students could definitely use.

Peter Becker
Senator

I think that the first and foremost issue in my mind and in the minds of the students is tuition along with the proposed \$50 fee increase. I am not opposed to a fee increase per se, but I believe that the proposed increase is not a fee, but tuition. In-state tuition is unconstitutional, therefore, I am opposed to the increase. However, I would be in favor of an increase if it were known that the increase would be used to benefit the students as a whole. This does not include \$17.50 for the East End Addition.

This brings me to my second point, athletics. I cannot support increases in athletic budgets while other departments are being cut back. I believe that although athletics are a very important part of an education, we must not upgrade athletics at the expense of academics. There are several things that I would support before pledging money toward athletics. These include additions to both the library and the bookstore.

I would also support a \$2 fee increase for big name concerts as long as the money was directly funnelled into a concert fund, and could not be used for other purposes. I feel there is sufficient need and support of this increase to warrant its implementation, and I also believe that big name concerts would benefit not only the student body but also the entire community because of the revenue generated by them.

In closing I would like to say that I believe I would do a very capable job as your senator and that I would do my very best to serve the students of this university.

Martin Behm
Senator

Now, more than ever, we need a qualified and dedicated senate, willing to take on the challenges that the ASUI faces. I feel that I am both qualified and willing to take on these challenges.

Proposed \$50 Fee Increase

Basically, I would have to oppose this \$50 fee increase. The administration has not specified where this \$50 is going, let alone let the students know why it is

continued from page 7

needed. Because this \$50 is being labelled as a "fee," it is not to be used for academic purposes, but must be used for the various "non-academic" benefits provided for the students. This could include such things as athletics, the dome, the SUB, intramurals, etc. I can't see that any of these areas are lacking so greatly to justify a \$50 fee increase for every student enrolled in the university.

In-State Tuition

It would be unfortunate to see the state of Idaho allow in-state tuition to become a reality. I am opposed to tuition for resident students, and could only accept it as a last resort. If tuition does become a reality, I would hope some kind of arrangement could be made so that the students pay a set percentage of the educational budget. This would guard against a situation in which students pay more and more, and the state less and less. The whole idea behind state-funded universities is to allow education to become a goal for which everyone, including the poor, can strive. The higher the cost to the students, the harder it would be for the average student to obtain an education.


\$3.50 ASUI Fee Increase

The ASUI has not had a fee increase for 11 years. In 1969, \$15.75 of your fees went to the ASUI. In 1980, \$15.75 of your fees went to the ASUI. Working on Communications Board with budgeting, I became aware of how thin we have stretched our existing budget. We made it by last year on our budget, but it is apparent that we cannot meet the budget this year without cutting somewhere. So if you desire to keep the programs we now offer, I would urge you to vote in favor of the \$3.50 fee increase. I believe that it is really needed just to keep quality of the programs at the level they are now.

Associated Students of Idaho

I believe that, especially now, we can really benefit from this organization. With the one percent and a short supply of money in the legislature, the idea of students joining together and working for the common good of all the students, is a smart and potentially effective idea. The four student bodies working together can accomplish much more than each individual school working alone. Extensive lobbying, statewide programs and concert tours, and better communications between the schools are just a few of the benefits that could be accomplished through this organization. I would like to see the ASI become successful, and I give my support to it.

continued on page 9



Guitars & Friends
featuring: Guitars, Banjos, Dulcimers, Fiddles, Mandolins, Books, Strings & More. Lessons & Full Repair Service
WE PAY CASH For Used Instruments.
309 S. Main, Moscow, 882-1823



**FLOWER POTS?!
Find out why when KUOI interviews Mark Mothersbaugh, lead singer for the rock group**

☆ **DEVO** ☆

This Sat. Nov. 15, at 3 p.m. (To be repeated Sat. Nov. 22, at 3 p.m.)

Catch KUOI broadcasting Live

At the Undergraduate Student Art Show at the University Art Gallery Sat. Nov. 15, 9 p.m.

KUOI FM 89.3



The Old Post Office Theater
The Old Post Office Theatre
Sun - Thurs \$2.50
Fri & Sat \$3.00
7 & 9:15
Now Showing!
Woody Allen's
"STARDUST MEMORIES"

Adult Midnight Feature
Admission \$4.00 Fri., Nov. 14 & Sat., Nov. 15

Babylon Pink

245 S.E. Paradise Pullman, Wash.
For current movie information call 334-FILM



LSAT • MCAT • GRE
GRE PSYCH • GRE BIO
GMAT • DAT • OCAT • PCAT
VAT • MAT • SAT • TOEFL
NAT'L MED BDS
ECFMG • FLEX • VQE
NDB • NPBI • NLE
Stanley H. KAPLAN
EDUCATIONAL CENTER
Test Preparation Specialists
Since 1938
For information, Please Call:
(206) 523-7617



BODYWORK & PAINTING
GREENE'S
BODY & PAINT SERVICE
720 S. Washington, Moscow
882-8535 Mon-Fri 9-5

Candidates

continued from page 8

Scott Biggs Senator

Probably the most important issue that underlies all others is that of credibility. Whether it be the east end facility, the U of I street closures, or just voting on a bill, it takes credibility to get things done for the students. In our quest to do the job of an ASUI Senator, administering \$456,000, working as a student voice with the State Legislature, the Board of Regents, the U of I faculty and the administration, serving as a director for the 18 complex departments that make up the ASUI, or just hearing and acting on problems offered by students, we must compromise. To get a compromise in the best interest of the students we must be credible. Long hours of work, dedication to the job, an open intelligent mind, and the ability to interact with people under control are the needed qualities to successfully represent the students as an ASUI Senator. I've tried to follow these principles in my last year as a senator.

If re-elected I would be senior-most member on Finance Committee. I feel it is high time that the ASUI Senate use Mission Base budgeting for the ASUI. Although it's clear to me that we must have the \$3.50 increase to maintain operations, we should use this type of financing to ensure that the cost of each program is examined to make sure that the students get the programs they want and need. With this type of budgeting we can maintain the wide variety of services without another fee increase for many more years. We can also keep up with the ever-changing student interests.

By electing people who can work together in a positive, constructive, progressive manner, we can enlarge our area of concern. The ASUI Senate must gain credibility with the student body, faculty, administration and state officials so we can become effective in areas like academics, athletics and state funding. We as elected officials must earn that credibility by working hard and in a professional manner.

This last summer I spent many long hours working with the ad-

Complete Electronic — Servicing —

Analytical & Industrial Instruments Stereo, CB's, T.V.

The Audio Shop

1218C N. Grand
Pullman Wash.
(509) 332-4451
10-5 Mon-Fri
10-3 Sat.

ministration, campus planning committee, and the city council on street closures. After this work we were able to achieve a great compromise that works into the student lifestyle much more easily. Instead of this street closure plan being implemented during the summer and becoming permanent, it is now only temporary so that the students can have an opportunity once in April and again in September to publicly voice their opinions on this as to whether it should become permanent or not.

Senators must constantly look and listen for the students' new needs. We must be able to look down the road and plan in the long run so we don't have to continually "manage the crisis." I've tried to adhere to increasing interest in a number of areas; one being jogging. I have constructed a special committee to put together the best possible plan for a jogging path to be built. By using outside funding the students won't have to pay for this new facility but yet students will be able to receive the benefit for many years to come.

I would never want to implement something like this without the students' support and with the completion of the new Polls and Surveys Bureau we could accurately sample the students feelings on these things as well as many others.

As an incumbent senator I can use my previous experience to get the best results for the students. I hope that you will vote for me so that I may continue my efforts in your behalf.

Greg Cook Senator

Inflation has taken its toll heavily on us all over the past few years, but the ASUI seems to have been hit hardest of all. Twelve years ago, the ASUI received \$15.75 from our registration fees. Today, it still receives that same \$15.75. Needless to say, the ASUI budget has been undercut considerably until at

Ted Cowin

PHOTOGRAPHIC
521' So. Jackson

Same Day Service

on Extachrome E-6
slide processing
We have the Best
Processing Equipment in the
Northwest to offer you the
highest and most uniform
process.

Special Offer Coupon

**Ektachrome
E-6 Processing**

20 Exposure

\$1.39

36 Exposure

\$1.99

Offer expires Nov. 15, 1980 Coupon must accompany order

Cash Value Coupon 1/20 of 1 cent

this point in time her financial situation is desperate. I strongly urge that you vote in favor of a \$3.50 ASUI fee increase on Nov. 19, taking it to a total of \$19.25. Even at this rate, the fee is a small price to pay for the benefits received from the ASUI. Imagine what this campus would be like without the *Argonaut*, the *Gem of the Mountains*, the Golf Course, KUOI and the many other programs the ASUI provides.

KUOI has been the subject of a bit of controversy lately and deserves some additional comment here. All of the ASUI's programs, including KUOI, are present to satisfy students' needs. The general consensus is that KUOI is not currently satisfying those needs so something must be done. I have some ideas on what to do. I think that the ASUI should determine what the majority of students on campus would prefer to listen to. Using this as a guideline KUOI should be able to provide programming that will appeal to a broader student base. I feel that KUOI has had a handicap in the past because little or no student input has been used in the determination of her programming schedule. By providing this input, I feel the problems can be solved quickly and easily.

I feel that student input itself, or lack of it, has become a problem on campus. Many, many decisions are handed down to us from administrators and legislators alike without much consideration for what the student would like to see. The Associated Students of Idaho, the ASI, is a major step in changing that. We want to have more say in decisions affecting us and by challenging the constitutionality of a \$50

fee increase we are proving that we are a credible voice and one to be reckoned with. I urge the students of the U of I, BSU, ISU, and LCSC to stand up for themselves and support the ASI and its goals. We want — we need — representation in those decisions!

Representation is a very important word. Without it, basically, you don't exist. As an ASUI senator, I feel it would not be my job to push my personal views in the senate but to represent the student. One of my goals as a senator would be to provide more ways to funnel in students ideas and needs to the Senate so that it may represent them even better.

The students' voice. It can be meek or it can be very strong. Many important issues such as the ASI and in-state tuition are coming to the fore in the near future. Now, more than ever, the students' voice must show strength. I believe in the students of this state and I want to help them become a credible voice. If you want a strong, representative voice working for you in the ASUI Senate then please vote for me, Greg Cook.

Dave Cooper Senator

The experiences I had serving as an intern with the Idaho Legislature fully qualifies me for working in a representative body such as the ASUI Senate. My idea of an ASUI senator follows along the lines of the trustee-delegate concept. The Joint Finance Appropriations Committee assignment I had as an intern introduced me to the complex world of budgeting. This committee sets the budgets for all the state agencies including colleges and universities. The appropriation for

continued on page 10

INDOOR DRIVING RANGE

real golf balls

**\$1.25 large bucket
.75 small bucket**

use your club
or ours!



WANTED!! ALL GOLD RINGS

On Tues., Nov. 11th-Sun., Nov. 16th, we'll pay \$20 to \$300 each for class rings. Also buying wedding bands, gold chains, bracelets, jewelry, and sterling silver. Anything marked 10K, 14K, 18K. Please check our prices before you sell. We pay from \$5 to \$50 more per ring than any other dealer.

THE GOLD EXCHANGE

Rm. 106, Cavanaugh's Motor Inn
Hours: 10 a.m. - 8 p.m. daily

MORTS CLUB

Everyday- Happy Hour 2-6 pm

Tuesday- Regression Time:

7:30 - 8:00	\$1.25 pitchers
8:00 - 8:30	\$1.50 pitchers
8:30 - 9:00	\$1.75 pitchers
9:00 - 9:30	\$2.00 pitchers
9:30 - 10:00	\$2.25 pitchers
10:00 - close	\$2.50 pitchers

Wednesday- Hump Time: 6-9:30pm

\$.40 glasses \$1.75 pitchers

Thursday- BCRB Time: 6pm-close

Bull, Coors, Rainer Bottles

Friday- \$.35 glasses \$1.50 pitchers 2-6pm



Candidates

this category is done in a lump sum, which is then divided between the four major universities by the State Board of Education.

Last year the in-state tuition bill was defeated 33-36-1. Thirty-five yes votes would have shown that a majority of the house wanted in-state tuition.

This year the state board has come out in favor of some type of in-state tuition. We, as students, face a hard fight ahead of us.

There are a couple of ways that the students can become more involved:

—I intend to push for a lobbying seminar. Its purpose would be to have lobbyists and professors instruct the students attending on how to properly lobby their legislators. I feel this will help the ASUI Senate in its fight against in-state tuition, and give the students who attend this seminar a skill they can use later in life.

—The political actions committee needs people who are interested in the ASUI and its functions. Its major purpose right now

is to assist in the fight against in-state tuition.

—The Associated Students of Idaho should hold a convention which any student could attend.

And finally the 3.85 percent cutback by the governor has required the four major universities to request \$15 million just to bring the last year's maintenance of current operation up to last year's budget request. This request does not include what will be needed to make up for the rise in inflation. This will further complicate our fight against in-state tuition.

Two other issues concerning the campus as a whole are:

—the \$3.50 ASUI fee increase. This increase would allow the ASUI to maintain its operations and services at their current level. I am in favor of this fee increase and I feel that since its last fee increase was 11 years ago, they should be allowed to have this increase.

—Campus crime, this is becoming a major problem here at the U of I. I feel that some sort of organization comprised of student and faculty should be set up to do an indepth study of this problem.

John Derr
Senator

I think the main thing that is going down hill is the lack of representation by the senators of the students. It seems to me sometimes it's 13 people deciding for 8,000. It should be the other way

around, students should be more informed and involved in what's going on.

ASI is a very important topic. We need a good group of senators to work together with the other schools, especially with the \$50 fee increase. It is also important that we work with the administration. Speaking of the \$50 fee increase, I believe that there is some compromise that should be made there. It shouldn't all be dumped on the students.

I totally agree with the \$3.50 fee increase for the ASUI. For the ASUI to do the things the students want done, they need some more money. The last increase was in 1968, and with inflation going up like it is, it is very important to get some more money in there.

I'm for the street closures, and I think the students like it too. If you watch students walking to class, they are walking in the middle of the roads. Everyone's not crowded on the sidewalks. Nobody has been hurt yet, but why wait until someone does to change things? This is a student campus and if they like it, the streets should remain closed.

Entertainment is also something that needs improvement. We have to get a good band in here instead of students always having to go to Pullman or Spokane. After the mess with ARS is cleared up we should go to work on getting someone else in here. Get ourselves off the black list.

Melissa Friel
Senator

I am Melissa Friel and I am running for ASUI Senator. I am majoring in elementary education and recreation.

The first issue I would like to address is the \$50 fee increase. I believe that such a large fee increase is totally unnecessary. When the administration was asked the question of what the money would be spent on, they answered that they could not give a detailed break down. If the students of this university are going to pay an extra \$50 I believe that we have a right to know what our money is being used for.

As your senator I would not be afraid to voice your opinion. I believe there is a definite need for strong representation of the students. I believe that many times ASUI Senators and candidates for these positions lose sight of the fact that they were elected by the students and were elected to represent the students' interest and not their own.

Another issue I would like to address is academics vs. athletics. I don't really believe that athletics is in opposition to academics. I think the problem is finding a happy medium. The students of this university came here to get an education, and I think that academics should be our first priority.

Along the same line, athletics provides career opportunities for many of our talented athletes. It also provides entertainment and a small source of revenue. Therefore, I believe that we must find a happy medium. A compromise of sorts, where our education does not suffer because of athletics and where athletics does not suffer because of lack of student support or funding. I believe that the students should have the ultimate say in how his or her money is spent.

The third issue I would like to approach is "communication between administration and students." I believe that many problems between the students and the administration are due to a lack of communication. I think the students and administration need a better line of communication.

continued from page 9

At the present moment there is no direct line of communication between the ASUI Senate and the administration. I would like to see at least one senator appointed specifically to talk to the administration and create a solid line of communication.

Furthermore, I feel the strong arm tactics never solve any problems but only widen the gap. I think we need to work with the administration to make our university a better educational facility.

The final most controversial issue I would like to address is in-state tuition. I do not believe that in-state tuition is a viable solution to our state or universities' needs.

As I understand the average tax payer will not benefit from in-state tuition and there will be no sizeable tax cut. The only group of people affected will be the students. The state receives great benefits from college educated students because their skills are then injected into the Idaho job market.

Another reason I am opposed to in-state tuition is that it does not prevent our fees from being raised. If the university feels it needs more money it can still increase our fees five dollars for this, seven-fifty for that, it's a never ending process.

In conclusion, I would like to say that as your senator I would be your voice in the ASUI. I am a perfectionist and I would keep informed and in turn keep you informed about what is happening in the ASUI and the administration.

More importantly, I would like to emphasize the need for you the students to voice your opinions!

Kevin Grundy
Senator

First off, let's clear the air. I'm not anti-Greek or pro-independent. It shouldn't matter where you live when you need a say in what goes on around here. But I still feel a student senate that is predominantly Greek can not really represent the entire student body. We need input from all living groups, and regardless of who I may represent, I intend to do my damndest to see that their

continued on page 11

**MIKE
SMITH
FOR
SENATE**

**BEFORE YOU GO HOME FOR
CHRISTMASS...
REMEMBER THE BLACKMARKET
OPEN 6 DAYS A WEEK 11:30-7:30 p.m.**



• **Long sweat shirt cover-up**

Reg. \$17.50 Now! \$14.99

• **Missy cut T-shirts**

Reg. \$5.40 Now! \$3.99

• **Coaches shirts**

Reg. \$9.60 Now! \$8.25

**Offer good till'
Nov. 21st**



**Jeff
THOMSON
Vice President
ASUI**

Candidates

voices are heard.

This year there hasn't been enough input from the constituents, the people the senate is supposed to be working for. Case in point: in my dorm, we have yet to see our senator this semester. And last year, when we did see him, he usually told us what he'd already voted on, rather than ask how we wanted him to vote. Now that's bogus representation. We all need to be more informed of what the hell is going on in this joint.

Tuition: You make people pay tuition and you're going to force a lot of people who can't afford to go to college to become garbage collectors. College will become an elitest establishment for them that got, and them that don't, get screwed.

I realize that higher education is running low on funds these days, but when it starts getting tight around the waist, you don't go buying a new belt all the time. You lose some weight, cut back, skip dessert. That's what the fat cats have to do.

Which leads me into athletics and academics: I feel the main purpose of this institution is to provide an education. Athletic events and intramural activities are important, sure, but they shouldn't become more important than the main purpose.

Anything athletics can do to fund themselves, well, more power to them, but I don't feel they should get a larger chunk than their fair share of the budget. Next time they want a dome addition, let them have bake sales and car washes.

Entertainment: When I first got here three years ago, they had three concerts, two of which they lost money on. That's one reason they stopped having them. And the money situation for the ASUI isn't looking any greener now. But you look at WSU and see how they run their concerts, which are profitable, and you have to wonder if it just isn't shoddy management here. There's got to be a way to have some concerts and still come away with a profit.

Remember, that's Kevin "DEXTER" Grundy, your independent alternative for ASUI Senate.

Kleth Kinzer Senator

In the elections on the 19th I feel there is a definite need to elect ASUI officers and senators that will be responsive to student views. My reason for this feeling arises out of the current issues on hand.

The officers and senators elected may have their own views already formulated on the fee increases, tuition, KUOI and other questions being approached by the ASUI legislators.

The real problem is how will these newly elected people vote, for themselves or their living groups. I feel a senator needs to spend at least two or three hours a month with each living group he or she represents. Spending the hours relating the clear facts on issues and receiving input from a cross-section of each group. This simple policy would make sure all students were informed and represented.

Many times a problem or bill will be brought up in senate meetings and no time will be allowed to contact living groups. In these situations I believe that sound, thoughtful judgment will allow a person to represent the best interest of the students. One must realize that although a decision might not be popular it might be the right one.

I believe that my two and one half years at the university have taught me this lesson as well as how to relate with the different factions on campus, therefore I ask for your support on the 19th. Thank you.

Kleth Kinzer is a junior majoring in agriculture and economics.

Tammy McGregor Senator

I am currently a junior political science major and am running for the position of ASUI Senator. I would like to address some of the issues that are considered to be important in the upcoming election.

One of the major issues this year is the formation of the Associated Students of Idaho (ASI). This newly formed organization will involve four Idaho universities and colleges and is aimed at improving communications between

the four schools, promoting the student views and forming an effective lobbying group for the students. As of now, ASI is looking into the transfer of credits among the Idaho schools and the possibility of a student member on the State Board of Education. I can see only good coming out of the development of this new organization. I feel it will be beneficial to all involved, the schools themselves as well as the individual students. The combined efforts of the four institutions will give us the strong backing and solid ground that Idaho students need.

Another issue involved the State Board of Education's proposal for a constitutional amendment for in-state tuition, defining fees and tuition and authorizing the board to transfer, consolidate, or eliminate academic programs. The proposal would bring a \$50 fee and tuition to in-state students. However, the big question is whether the increased revenue would be used for the programs and services students want or need. The students have no guarantee for its improvement and growth, but if the students are to provide these funds, they must have some sort of assurance that this is what their money will be used for.

The promotion of the educational concerns of the students is

an important issue in this campaign. For instance, the proposal for the Art and Architecture Department; it would require no additional funding to raise it to college status. If this were done, it would mean help in placing graduate students and obtaining outside grants and funds. I feel it would be my responsibility to the students to support this proposal. I would also like to see something done toward the development of better library facilities and some sort of program that would enable the students to become aware of the facilities that are now open to them.

It seems this year, perhaps more than the past, there has been an increase in campus crime. There are committees being formed now to improve campus lighting. An improvement in this area would help to discourage problems, but other measures must be taken as well. The self defense clinics and Night-Line are a few ways to start. I hope to see ASUI look into other ideas and possibilities to stop problems before they start or become too big to handle.

My past semester as a senate aide has shown me that the position of ASUI Senator is a job that requires much attention and hard work, especially now that the U of I is feeling growing pains. It will require a senate that is dedicated

continued from page 10
and willing to work together to solve some of the above problems. As a senator, I would be available and receptive to student ideas and input. With your support on November 19th, I am willing to dedicate my time toward the promotion of the educational and social concerns of the students.

Mike Smith Senator

I am an off-campus senior and have a double major in communication and secondary education. I have experience as a living group officer, and had appointments to Faculty Council and Academics Board.

Instead of a fee reduction, this summer a \$17.50 fee for the SUB
continued on page 12

All
New!!

GAME ROOM

Over 18
Pinball &
Electronic
Games.



Anniversary Sale

...celebrating
our 90th year
1890-1980

November 11th to 15th



All Suits
Sportcoat & Slack
Combinations ... **20% off**
Outerwear ... **20% off**
Rugger Knits ... **25% off**
Merona Sport
& USA
Sportswear ... **1/3 off**

Creightons

— Since 1890 —

• Free parking in our
Jackson Street Lot
• Bank Cards Accepted

211 S. Main
Downtown Moscow



**Dr. Arthur B. Sachs
optometrist**

**The Largest Selection of
Fashion Frames at
the most Competitive
prices!**

Plus eye examination
prescriptions filled,
contact lenses.

E. 337 Main-Pullman

334-3300



Spare a meal, help fight hunger next week

A day to "fast for a world harvest" will be held again on campus this year November 20.

The national day for fasting is supported by OXFAM-America, an international relief organization which provides self-help development programs in Asia, Africa and Latin America.

The fast is locally sponsored by the Campus Christian Center, St. Augustine's Catholic Center and

the University of Idaho.

Anyone interested in participating in the fast may do so by missing one or more meals, and then bringing the money saved to St. Augustine's Center on Nov. 20 at 12:30 p.m. during the Thanksgiving observance service. Contributions may also be turned into the Campus Christian Center, 822 Elm Street.

Living groups are also being

urged to give up a meal as a group and send the donations to OXFAM. This can be done any time during "Hunger Awareness Week," Nov. 13-20.

Last year over \$600,000 was

raised for OXFAM, by people fasting and sending in what they saved. The money was used for relief assistance to the Cambodian people.

Area churches are also being

invited to participate in the OXFAM drive. Churches may send the money they raise to the Campus Christian Center, or contribute their money through their own denominational channels.

Candidates

Bond was transferred to the "East End Addition" for the Kibbie Dome without meaningful student input. There is currently a proposed \$50 fee increase to make up for a 3 percent cut in state services ordered by the governor. Further, the prospect of in-state tuition is being seriously discussed by the Board of Regents and legislators. The Police Blotter of campus crime continues to grow.

Are you happier than you were last year? Are student fees constantly rising? Does the prospect of not being able to complete college because of the imposition of in-state tuition excite you? Then this election is important to you.

In-state tuition: Every Idaho student must become involved. Rep. Joe Walker of Moscow said last year after HJR No. 7 (In-State Tuition) came out of the House Education Committee with an 11 to 7 "Do Pass" Recommendation: "My colleagues say if this issue affects so many students adversely why aren't we hearing from them? We're just seeing the ASUI Lobbyist and the ASUI President." When the issue came to the House floor for a vote, only seven students sat in an otherwise empty gallery. Two weeks before, 4000 public school teachers rallied for their salaries on the statehouse steps. One week later motorcyclists packed the Senate gallery to quietly protest a bill bringing back the helmet law. U of I students must be pre-

continued from page 11

pared to mobilize and show no less concern during the coming year.

Academics: More nine-week accelerated classes should be provided for underclassmen who have to drop classes after the first nine weeks of a semester. A feeling of failure only brings a greater attrition of students from the U of I. Any review of faculty tenure must have student input.

East End: Timing for the East End is most unfortunate. Boise State's push for a Coliseum is, too. The pressure from the 3 percent state cut-back of finances and the strong possibility of the regents and legislature acting favorably on in-state tuition make many look at an East End Kibbie Dome Addition and a BSU Colliseum as luxuries.



**VALUABLE
COUPON**

.50¢ OFF

**EACH USED
ALBUM**

**buy, sell & trade
clean used records**

311 S. Main, Moscow

OPENINGS

ASUI Political Activities Committee

A new department has been created within the ASUI to increase communications among students, parents, administrators, and legislators.

The ASUI Political Activities Committee is now available for applications for 1981. The ASUI-PAC is composed on one student from each of the 35 legislative districts in the state. One PAC Director will also be appointed to coordinate and direct the group.

Responsibilities of Members: To provide vital communications with the 2 representatives and senator from their home district. Members will also keep in close contact with the ASUI Lobbyist and ASUI President during the Legislature.

Apply NOW at the ASUI Offices

police blotter

...Dan Spickler, 618 Ash St., reported 24 cassette tapes and a black plastic brief case were stolen from his 1974 Datsun pickup truck between midnight and 8:30 a.m. Nov. 8.

The brief case was taken from the front seat, and the tapes were taken from a "lockbox" in the bed of the truck. The brief case contained law files from a Lewiston law firm.

The truck was parked in lot 16 near the Phi Kappa Tau fraternity when the tapes and brief case were stolen. The stolen items were worth about \$140.

...Patrick Sprute of Gault Hall reported someone vandalized Terry Burton's 1978 VW convertible between 10 p.m. Nov. 8 and 8 p.m. Nov. 9. About \$250 damage was done to the VW's left rear panel and rear deck lid. It was parked either in the SUB parking lot or in the Gault Hall parking lot at the time it was vandalized.

...John Patrick Ross, 1122 Kamiaken, was arrested on a charge of driving under the influence of alcohol or dangerous drugs at about 10:45 p.m. Nov. 8.

...A 1968 Oldsmobile belonging to U of I architecture student Bagher Motamed slid down a hill and came to rest against a tree about 5:30 p.m. Monday after its tires spun on loose dirt as Motamed was driving out of a parking lot at the KUID Radio/TV Center. About \$250 worth of damage was done to the Oldsmobile. There was no damage done to the tree.

...Don Monson, University of Idaho men's basketball coach, was arrested and charged with driving while under the influence of alcohol a little after midnight Wednesday morning. He was held in the Latah County jail until he posted \$300 bail late Wednesday morning. No date has yet been set for arraignment.



McGRAW'S AUTO PARTS

& MACHINE SHOP



Headquarters For All

Domestic auto and truck parts and foreign makes including: Austin, Capri, Datsun, Fiat, MG, Opel, Toyota, Triumph, VW, Volvo and Honda

Complete Cylinder Head and Engine Rebuilding

510 W. 3rd-Moscow-882-5596




Film Review

by N.K. Hoffman

Woody Allen is Stardust Memories

"Killer pigeons—they're rats with wings!"

Woody Allen's latest, *Stardust Memories* is a little like one of those trick presents that you unwrap only to discover another layer of wierder wrapping paper underneath. A kaleidoscopic montage, where you can never be sure which layer, if any, is supposed to represent reality. If you can make all the cross connections, it's great.

Stardust Memories is filmed in black and white, which edges everything with emphasis. In the opening train scene Allen looks around at other people in the car and every one of them looks like a freak—though you can tell they're the sort of people who ride in trains all the time. Later we see Dorrie, one of Allen's girlfriends, just looking at the camera, with Louis Armstrong trumpeting in the

background, and her face looks fabulous.

In part, *Stardust Memories* is a film about a comedian who makes films. Allen usually makes movies that relate back to himself, but this is the first one I've seen where he stands that far back and takes a look at himself. It's full of intriguing insights and situations.

For instance, one layer of ?reality? has Allen addressing a covention of his movie-personality's fans—surely a reflection of his real life experiences, but it seems surreal, amazing—and amusing.

The film also has the usual complement of beautiful women, great one-liners, and interesting interactions.

Stardust Memories will play at the Old Post Office Theatre in Pullman at 7 and 9:15 p.m. until further notice.

Preview '80

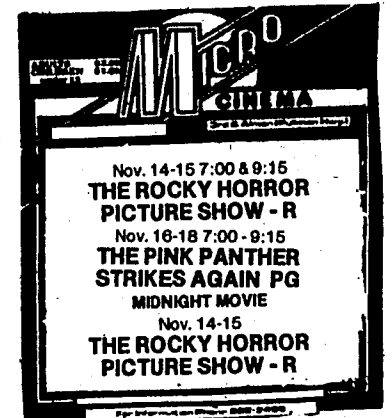
The following albums will be previewed at 10:05 p.m. on KUOI-FM, 89.3:

FRIDAY: The Police, *Zenyatta Mondatta* (rock)

SATURDAY: SPECIAL! Live broadcast of the Undergraduate Art Show with the *Lubricants* performing.

SUNDAY: John Coates, Jr. *Tokyo Concert* (jazz)

MONDAY: Moon Martin, *Street Fever* (rock)



Theater: The Seagull

Plays written by Anton Chekov are not often performed on college campuses, and director Forrest Sears thinks that's a pity.

Sears, a professor of acting, directing and theatre history at the University of Idaho, will direct *The Seagull* which will be performed November 21-23 and December 5-7 at the Hartung Theatre.

Sears admits the first time he read a play by Chekov he set it down. He obviously picked it back up and he said he "discovered" Chekov, "the great Prophet of the Russian revolution." Chekov is now his favorite playwright of them all.

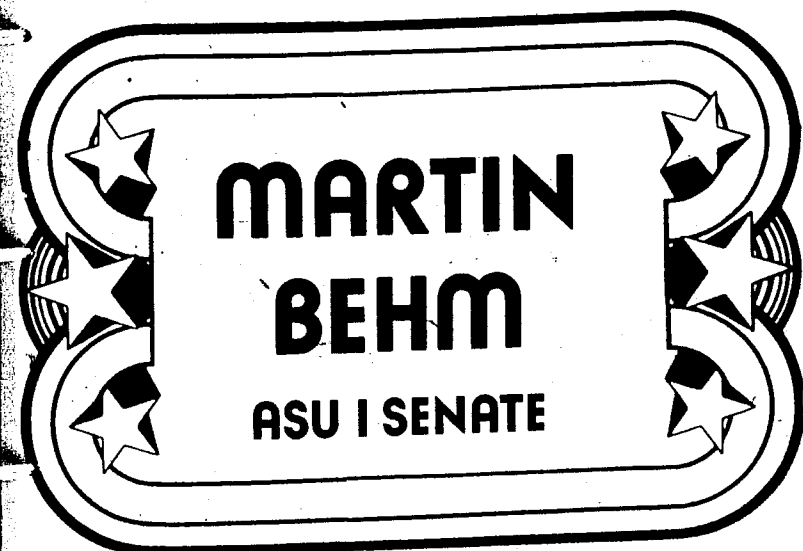
The play, *The Seagull*, made the now famous Moscow Art Theatre which was teetering at the border of failure in the early eighteen hundreds an overnight success. From that night, Sears said of *The Seagull*, Chekov's reputation and the Moscow Art Theatre bloomed.

Chekov wrote his four major plays, *The Seagull* included, under the shadow of death. Chekov was dying of tuberculosis at the age of 44 and he knew it. "Somehow," Sears said, "he realized that life goes on and it can be good and meaningful." Sears points out that it is this lightness of spirit and humor that makes Chekov his favorite playwright.

The Seagull involves family and friends relaxing at the wealthy estate of Sorin, a beautiful actress.

Her would-be writer son and a successful author weave this tapestry of the human experience. The threads of romance, intrigue, hopes and disappointments are intertwined.

The play is very challenging to the actors and the audience, who must make "acquaintances" with the actors, Sears said.



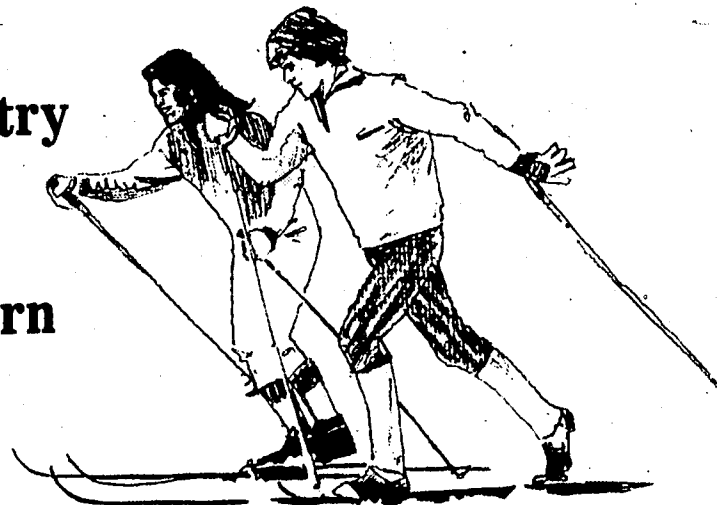
Start every Tuesday and Friday morning with the Argonaut

Get Outside This Winter with...

Cross Country Skis

From...

Northwestern Mountain Sports



★ **15% OFF** Retail Price On Any Combination Skis • Boots • Poles • Bindings

(Plus \$5 for Mounting & Base Prep.)

- ★ Great Brands Available: Bonna • Rossignol • Trak • Asnes • Alfa • Exel • Adidas • Troll
- ★ 1 Year Warranty Against Breakage of Skis
- ★ Knowledgeable Sales People that Ski Cross Country
- ★ Reasonable Prices

- ★ Plus Closeout Bargains on Fischer and Rossignol Touring AR Skis; Tyrol & Trak Leather Boots
- ★ Complete Package as low as \$96

P.S. We're also DOWNHILL SPECIALISTS and have a great stock of WINTER CLOTHES & SKI FASHIONS



10-5:30 Mon-Sat
Moscow Store Open
Sundays 12-5 'till Xmas

NORTHWESTERN MOUNTAIN SPORTS

- 410 West Third, Moscow, 882-0133
- N. 115 Grand, Pullman, 334-1105

Gallery art show: Beyond the Picture Plane and pink socks

by Linda Welford

"If any show should be slightly bizarre, it should be an undergraduate show."

Bizarre is what the opening of the undergraduate art show, *Beyond the Picture Plane* will be.

The Media and Dance Opening, a celebration of more than 150 art works submitted by University of Idaho undergraduate students, will be held Saturday from 9 p.m. - 2 a.m. at the U of I Gallery.

David Giese, assistant professor of art, is the impresario of the evening's unusual but intriguing artistic endeavors.

"People go to art openings to look at people, not the art," says Giese. And on this premise, Giese has conjured up the evening's elements--a nightclub atmosphere, replete with elaborate costumes, dancing, and theatrical lighting.

Says Giese, "The art won't be lit, the people will."

The theme of the show is a raw enactment of the phenomena of punk and new wave. According to Giese, these are "viable and contemporary modes that people are functioning in." Furthermore, these modes are the "best vehicle for providing a sense of theatrics...and people enjoy pretending."

Giese encourages people to wear cos-

tumes which reflect the theme of the show--"fantasy-type" costumes. "You can do something with your Halloween costume...like come as a punk rabbit," he suggested.

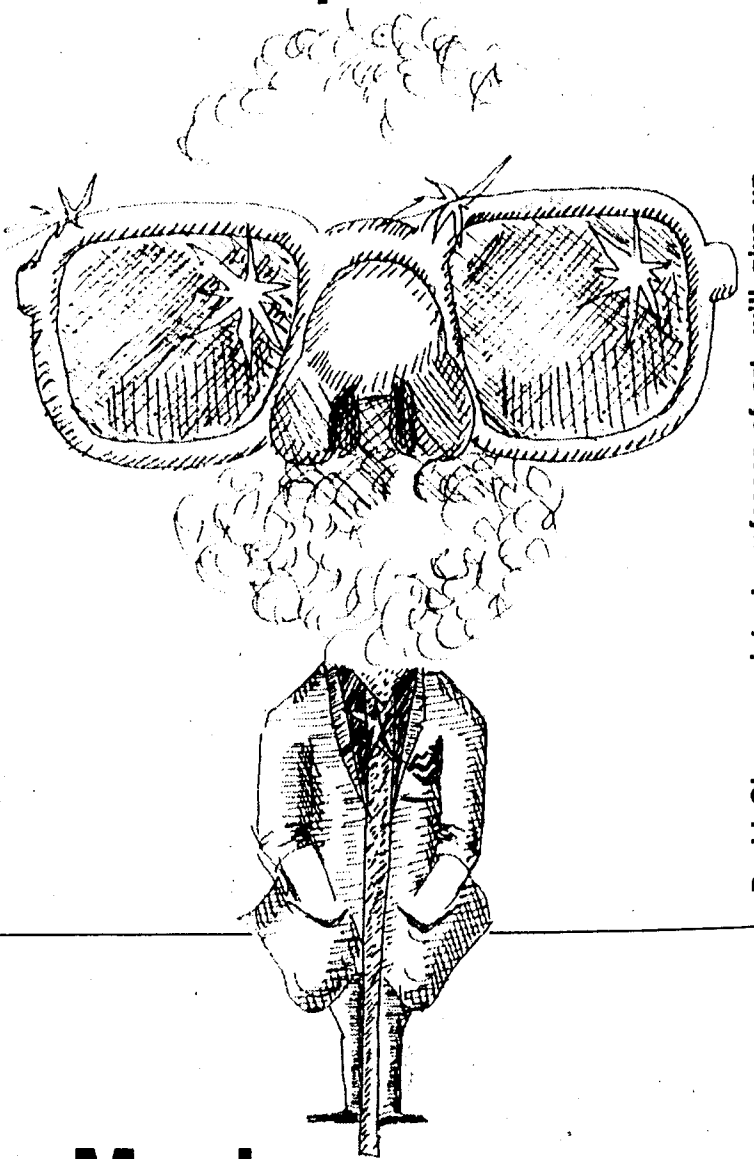
The highlight of the evening will take place around midnight, when Giese will judge the four best costumes. As prizes, Giese will give away his three lamee ties and a pair of pink Day-Glo socks. (*Lamee ties and Day-Glo socks?*)

Lamee is an expensive fabric interwoven with metal threads such as gold or silver. Day-Glo is a trademark for a coloring agent added to dyes to produce a brilliant fluorescent color.

According to Giese, these prizes are significant because they are "objects of status" and there "just aren't many around."

These "objects of desire" will be enclosed in a glass case, and presented to the winners. Giese will use the "vernacular of punk" as criteria in judging costumes.

The *Lubricants* a new wave band, will provide musical entertainment throughout the evening. KUOI will air a live remote of their performance. According to Giese, "The whole building will become one big speaker."



David Giese, assistant professor of art, will give up valuable components of his wardrobe as prizes at the undergraduate art show Saturday night at the Gallery.

LITTLE BIG MEN

REGISTER NOW!

WIN!

A FREE HOT AIR BALLOON RIDE! for two!

in **LITTLE BIG MEN'S NEW HOT AIR BALLOON**

Register at Little Big Men NOW for the FREE Wednesday morning flight for 2 persons DRAWING TO BE HELD AT 8:00 P.M. TUESDAY AT LITTLE BIG MEN IN PULLMAN— Register at the store in Moscow, too!

ALSO DON'T MISS THE FALL "MEAL DEAL" SPECIALS!

***ALL YOU CAN EAT SOUP N' SALAD BAR**
- 2 HOT SOUPS EVERY DAY OF THE WEEK -

***ANY LARGE SINGLE INGREDIENT PIZZA**
- PEPPERONI - SAUSAGE - MUSHROOM - ONLY

PULLMAN
PHONE 332-6531

\$1.49!
ONLY

\$3.95!
ONLY

MOSCOW
PHONE 883-0520

***WATCH FOR THE BALLOON OVER TOWN THIS WEEK!**

Music Washington-Idaho Symphony



The Washington Idaho Symphony Chorus under the direction of Duane Baker will present "Choral Collage," the second concert of the Washington Idaho Symphony's 1980-81 season Sunday at Lewiston Civic Theatre and Tuesday at Moscow High School Auditorium. Both concerts begin at 8 p.m.

The 60 member chorus will perform selections from sacred and modern American music. A variety of artistic talent will be displayed as the concert includes singing, dancing narrative reading and piano duet accompaniment. The Washington Idaho Symphony Chamber Singers, a select group of 19 vocalists from the chorus, will be featured in the program.

Single tickets are \$5 for adults \$3 for students and senior citizens and \$1 for children under 12. Tickets may be purchased from the Music Room and the U of I Student Union Building in Moscow or Corner Drug Store in Pullman. For more information contact the symphony office at 882-6555.

CASINO
Sponsored by SCAVMA

\$10 Max. Wager - Must be 18

Sat., Nov. 15
Noon to Midnight

- Blackjack
- Wheel of Fortune
- Dice Games

STATION

NORTH 1115 GRAND
PULLMAN

Weekend's Worth

movies

- OLD POST OFFICE THEATRE - *Stardust Memories*..7 and 9:15 p.m., *Babylon Pink*..midnight.
- MICRO - *The Rocky Horror Picture Show*..7 and 9:15 p.m., *Rocky Horror*..Midnight.
- KENWORTHY - *Oh, God, Book Two*..7 and 9 p.m.
- NUART - *Loving Couples*..7 and 9 p.m.
- CORDOVA - *Xanadu*..7 and 9 p.m.
- AUDIAN - *Borderline*..7 and 9 p.m.
- SUB - *The Big Fix*..7 and 9 p.m. (Friday only)

music

- MOSCOW HOTEL - *Dozier-Jarvis Trio*..jazz (Friday only)
- MOSCOW MULE - Mary Myers..folk and middle-of-the-road.
- RATHSKELLERS - *Dorian Gray*..rock 'n' roll.
- CAPRICORN - *Rocky Mountain Ozone Band*..country-rock.
- CAVANAUGH'S - *Clockwork*..top 40 rock 'n' roll.
- SCOREBOARD - *Keith and Company*..top 40.
- HOSEAPPLES - *Rock (Friday), Old Fave (Saturday)*.
- COWBOY BAR - *Round Mound of Sound*..country rock.

events

FRIDAY, NOV. 14

...All Search and Rescue members planning to attend the Little Boulder practice search are to meet at 5:30 p.m. in the SUB parking lot. Bring your 48-hour packs.

...The Plant and Soil Science Department will hold its annual Fall Banquet at 6:30 p.m. at the American Legion Cabin. The banquet will be potluck with meat provided. All students, staff and faculty of the department are invited. Bring a dessert or side-dish and your own silverware. A live band, *Loose Gravel* will provide entertainment.

...The U of I Undergraduate Art Exhibit opens at 10 a.m. The exhibit will run Nov. 14-24.

...The Chinese Students Association will show the film, *A Prize Re-Won* at 7:30 p.m. in the Spalding Room of the SUB. The film will be in Chinese with English subtitles. Open to the public.

SATURDAY, NOV. 15

...The Volunteers in Moscow, in cooperation with the Independent Telephone pioneers, will sponsor a rummage sale from 9 a.m. - 3 p.m. at the Latah County fairgrounds. Proceeds will go to V.I.M. and the Special Olympics. If you wish to donate items or for more information, call the V.I.M. office at 882-7255.

...Rosalie Sorrels will be performing at David's Center at 8:30 p.m. Tickets are available for \$3.50 at Guitars Friend or at the door on the night of performance.

...The University Gallery will sponsor a reception for the opening of the Undergraduate art exhibit between 9 p.m. - 2 a.m. Must be in costume to attend.

SUNDAY, NOV. 16

...The Campus Christian Center Fellowship will present a Fall Fest from 5:30 - 7:30 p.m. at the Campus Christian Center.

MONDAY, NOV. 17

...KUOI will hold an open house to celebrate its 35th anniversary. Everyone is welcome.

Folk singer, Rosalie Sorrels, returns

One of Idaho's most significant folk singers, Rosalie Sorrels, will be returning to Moscow Saturday, for an 8:30 p.m. performance at Davids' Center. Born and raised in Boise, Sorrels' story telling and music have been touching audiences for over the last three decades throughout North America.

In addition to having recorded 11 albums she has

toured much with the well known folk artist Utah Phillips. Phillips once said of Sorrels, "she blends wit and compassion, song and poetry into the tightly woven fabric of life that is extraordinary and fabulous in its own truest sense."

Tickets are available for \$3.50 at Guitars Friend or at the door on the night of the performance.

COMING TO MOSCOW

November 14-16 - 7:30 p.m.

REVELATION SEMINAR

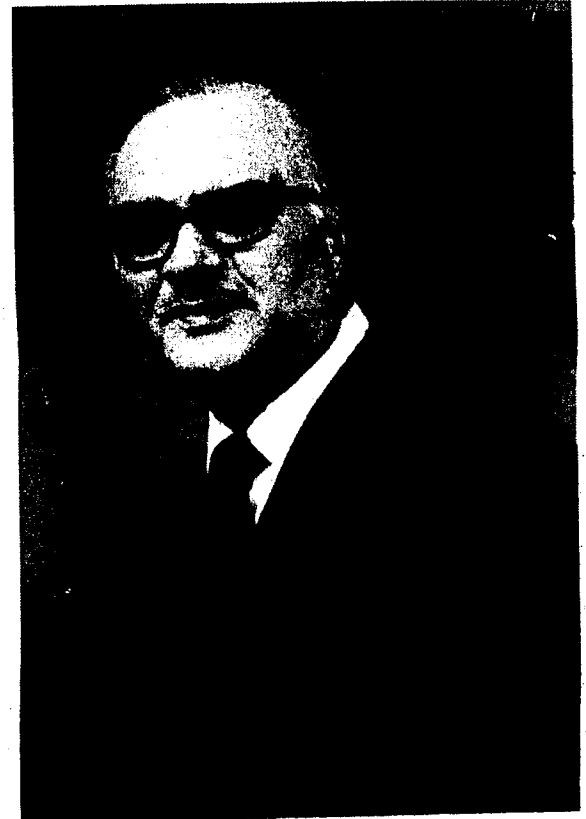
Presents.

Theodore Carcich
Pastor and Bible Lecturer

Friday's Topic...

NOV. 14
THE DEADLY
CAUSE OF
CRIME, RIOTS,
IMMORALITY!

...what is the cause of this lethal virus that afflicts the religious and non-religious?



NOV. 15
WHERE IN HEAVEN
DID THE DEVIL
COME FROM?

*...is he real?
...did God create him?
...what is his sinister purpose?
His ultimate destiny?*

NOV. 16
HEAVEN!

*...is it fantasy or reality?
...you can be there! How?*

Moscow-Pullman Seventh Day
Adventist Church
1015 W. C Street, Moscow

FREE ADMISSION . . . Nursery Provided

Stewart's Custom Frames

**in basement at: 903 E. 3rd St.
Moscow, Idaho**

**Announces expanded Holiday hours
beginning Nov. 17th we will be open:**

**M-F 9 a.m.-9 p.m. -until after
Sat 10 a.m.-5 p.m. Christmas**

**Please get your orders in early to allow us
time to satisfactorily fulfill your requests for:**

- Custom picture framing
- Custom matting
- Oval frames & mats
- Special orders for art supplies
- Museum mounting
- Reconditioning and repair
- Limited Edition prints



COME SEE US!

sports

Vandals chase first winning mark since 1976

After suffering their first loss of the season at home, the Idaho Vandals will try to get back on the winning side when they host Northern Arizona Saturday in a key football game for both clubs. Kickoff is set for 7:30 p.m. in the ASUI-Kibbie Dome.

The Vandals are looking for their first winning season since 1976. The Vandals are 5-4 on the year and 3-2 in league action after suffering a 28-21 setback to Idaho State last week. The loss to the Bengals eliminated the Vandals from the Big Sky race for the conference crown. Boise State clinched the title with a 14-3 win over Nevada-Reno last week.

Northern Arizona is also looking for a winning season. The Lumberjacks stand 5-5 overall and 3-3 in conference action heading into their last game of the season.

"Once again we are faced with an important game," said Idaho

coach Jerry Davitch. "At this point in the season they all are important. It's a conference game and gives us a chance to win six. We'd like to do that at home. It gives us a chance to regroup and show everybody we are a better team than we showed last Saturday."

Davitch was referring to seven turnovers by the Vandals that aided Idaho State in winning its fifth game of the year. Idaho quarterback Ken Hobart, who entered the contest with only five interceptions on the year, was stung for three against the Bengals.

However, Hobart continues to lead the Vandals. He's the team's leading scorer with seven touchdowns and is the team's leading rusher with 642 yards on 162 carries.

Hobart has also thrown for 11 touchdowns, completing 51 of 121 passes this year for 962 yards.

Terry Idler will be shooting for

his third 100-yard plus game against the Lumberjacks. Idler is the second leading rusher for the Vandals with 535 yards on 71 carries.

Running backs Russell Davis and Wally Jones have been hampered by injuries, but both are expected to be at full speed Saturday. Davis has 486 yards on the season while Jones is at 451.

Leading the Vandal receiving squad is Jack Klein. Klein had two big catches against the Bengals last week for 44 yards to bring his total to 320 yards on 20 catches. He needs only 38 more yards in receptions to jump into the No. 2 career spot for the Vandals. He has 1,132 yards on 76 catches in his four years at Idaho. Kirk Allen is currently No. 2 on the Vandal career list with 1,169 yards on 89 catches. The top spot is held by Jerry Hendren with 3,435 yards on 230 catches.

The Vandals are also close to

setting two school records as the season draws to a close. Idaho place kicker Pete O'Brien has kicked 31 out of 32 extra points this year. He only needs two more to set a season record. The current record is 32 set by Steve Tanner in 1973.

As a team, Idaho is 18 points away from setting a single-season scoring record. The current mark

is 22 points set by the 1973 Vandal squad.

Idaho is still tearing up the conference in total offense and rushing offense. The Vandals rank fifth in the nation in total offense, averaging 384 yards a game, with 271 yards coming on the ground. That 271-yards-per-game average ranks Idaho second in the nation.

Idaho, AIA square off

The Idaho basketball team kicks off its 1980-81 season tonight by playing host to Athletes in Action, Canada, in an exhibition game beginning at 8 p.m. in Memorial Gym.

This game is not part of the regular season ticket package and will not count on Idaho's overall season record.

The Vandals opened their season last year against AIA-Canada and came out with a 80-76 defeat. AIA-Canada went on to post a 47-8 overall record while the Vandals had its most successful season in 18 years with a 17-10 overall mark and second place standing in the Big Sky Conference at 9-5.

AIA-Canada enters Friday night's contest with a perfect 6-0 record. Their victories have come over the University of Victoria, 111-91; Concordia University, 82-50; McGill University, 116-56; Bryant College, 102-73; New Hampshire College, 102-75; and Boston University, 84-69.

"This will be a good game for us. We need to go against someone else at this point as we prepare for our regular-season opener. It will let us know just where we are at and what we need to do to better prepare ourselves for the long season. I believe our kids are ready to play and give a good account of themselves. It sure would be nice to start off the year with a win. I know our kids will give a good effort," Monson said.

The expected starting lineup for tonight's game includes Jeff Brudie at forward, Ron Maben at center and Brian Kellerman at guard. All three started last season. The fourth starter from a year ago, Gordie Herbert, is sidelined with a dislocated wrist. Rounding out the other two positions will be sophomore Phil Hopson at forward and junior college transfer Ken Owens at guard.

Both Brudie and Kellerman gained All-Conference honorable mention status last year. Kellerman was the team's second leading scorer as a freshman with an 11.3 ppg average. Brudie, a senior who has played in every Vandal game since his freshman year, was the team's third leading scorer at 9.5 ppg. Maben, also a senior, led Idaho in rebounding last season with better than five a game.

Upending AIA won't be easy. The Canadians averaged 99.2 points a game last season and 38.9 rebounds.

WIN A 1981 SUBARU

By participating in the

Ambassador Auto - Cavanaugh's

"Half - Court Shoot - Out"

• Make (2) shots from half-court during the half-time intermission of the U of I VANDALS vs. Athletes in Action.

• Win a 1981 SUBARU G/L 4x4 station wagon and two days, one night FREE lodging and FREE breakfast for two people at any of CAVANAUGH'S locations in Moscow, Kennewick, or Spokane.

• Make (1) half-court shot and win the CAVANAUGH'S vacation package.

REGISTER AT THE GAME!!

One person will be selected by draw, to shoot at half-time!
Just for being selected, CAVANAUGH'S will treat you to dinner.

UNIVERSITY OF IDAHO VANDALS

VS

ATHLETES IN ACTION

Tonight 8 p.m.
Memorial Gym

U of I students FREE Admission with ID
Adults \$3.00; High School Students \$1.50

FOLLOW THE FOOT STEP BARGAINS!

20% to 50% off

- Children's Books
- Assorted Specials
- Gift Books

Large Idaho Book

Reg. \$45.00

NOW \$35.00

Sale begins Nov. 11th to 17th

Limited to stock on hand
only at the
U OF I BOOKSTORE

Swimmers open with big win

The men's and women's swim teams opened the season in the Third Annual Idaho Relay Meet featuring what is termed by U of I coach John DeMeyer a low pressure form of competition to open the season.

The meet is made up entirely of relay events with four swimmers per event. There are both men and women events as well as co-ed.

Idaho won all three scoring categories. For the women the scores were Idaho, 42; Washington State, 37; Central Washington, 21; Eastern Washington, 17; Montana, 16 and Whitman, 13. For the men it was Idaho, 39; Central Washington, 38; Washington State, 29; Eastern Washington, 20 and Whitman, 17. In co-ed scoring it was Idaho, 139; Washington State, 83; Central Washington, 77; Eastern Washington, 51 and Whitman, 40.

Idaho will be at home today in a dual co-ed meet

with Eastern Washington set for 5:30 p.m. in the Idaho Swim Center.

During the relay meet, the first leg of each race could be timed for qualifying marks for national competition. Two women qualified for the AIAW Division II National meet set for early March. Nancy Bechtholdt qualified for the third year in a row. Last year's gold medal winner in the 20 free at nationals, Bechtholdt has again qualified for the event.

Bonnie Flickinger qualified for her first AIAW event when she set a new U of I record in the 100 meter IM in a time of 1:03.97 breaking the longest women's standing record set by Diane Christenson of 1:04.60 in 1976.

The U of I medley relay team set a qualifying time of 4:12.76. Members of the team are Bechtholdt, Monica Gill, Anne Kincheloe, and Sarah Osborne.



Argonaut Photo/Mike Borden

The Idaho Vandal volleyball team won the Interstate League Championships last weekend with a victory over Lewis-Clark State College. Pam Ford (21) and Yvonne Smith (30) were key instruments in the Vandals' 15-7, 15-10 win.

Spikers host EWU, WU

Idaho's volleyball team picked up right where it left off Monday night in Spokane by defeating Gonzaga University and Spokane Falls Community College.

Coach Amanda Burk's Vandals entered the matches after winning the Interstate League Championship two days earlier here in Moscow.

The Idaho women met a sad Gonzaga squad first and defeated them in three straight games; 15-6, 15-0, and 15-7. "They are not strong at all. Their weakness allowed me to play my second string," said Burk.

Idaho faced a bigger chore against Spokane Falls. According to Burk, SFCC is one of the top community schools in the area. "They have beaten Division I teams," she said.

Burk's squad dropped the opening game 11-15 but went on to capture three straight to win the match. The Vandal wins were 15-11, 15-7, 15-5.

"We thought they were one of the better teams we've faced all year," Burk said. "I felt our team did a good job of covering the balls, and our nickle defense worked pretty well."

The Vandals play their final home matches of the season today against Eastern Washington and Whitworth. Both of these teams consistently make for tough opponents.

At 4 p.m. Idaho will face Whitworth with Eastern scheduled for 8 p.m. Both matches will be played in the large gymnasium of the P.E. Building. According to VVT (Vandal Video Technician) Brent Keeth, true sports fans will really be missing something if they don't see this Idaho team play. Idaho's season mark is currently 26-4-1.

WELCOME HOME

Going Home For The Holidays?

Be Part Of A

Hometown High School
Recruitment Gathering

For More Information About
a Christmas gathering in your hometown,
come to an organizational meeting.

Thursday, Nov. 20
6:30 p.m.
Silver Room, SUB

University of Idaho
Alumni
Alumni Association, Inc.
Moscow, Idaho 83843
(208) 885-6154



TOM LYONS ANNOUNCES THE FIRST FACTORY AUTHORIZED PRICE REDUCTION SALE

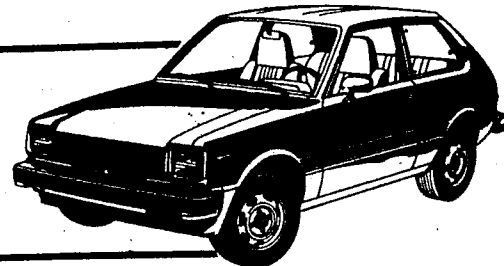
- ★ Exceptionally large selection of '81 cars and trucks to choose from!
- ★ All prices reduced

- Save on STARLETS, US #1 gas mileage car, 39 city, 54 hwy (EPA est)
- Save on TERCELS, hottest selling front wheel drive in the US
- Save on sporty COROLLAS — the world's best selling car
- Save on US #1 selling TRUCKS 2Xs and 4Xs.

All in stock and all reduced

- ★ Highest trade-ins offered in the area.
- ★ \$1000 GUARANTEED TRADE-IN on all remaining 1980s.
- ★ Most liberal financing in the area.

THE STARLET
39 city 54 hwy



DON'T MISS THIS
FACTORY AUTHORIZED SALE!

Test Drive A Toyota At Tom Lyons
Today & We Think You'll Buy It.

TOM LYONS TOYOTA

1212 PULLMAN RD, MOSCOW, 882-0580

Women harriers begin quest for national title

The autumn sports scene has been fairly good for all of the intercollegiate athletic teams at Idaho, but no sport has enjoyed better success than women's cross country.

Coach Roger Norris' squad is ranked by *Harrier Magazine* as one of the top three in the nation in AIAW Division II and has compiled a 25-2 season mark. The lone setbacks came from national powerhouse Oregon and last year's regional champion Seattle Pacific.

The Vandals beat SPU in the Fort Casey Invitational at Whidbey Island, Wash. earlier in the season but narrowly lost to them at this year's regional meet.

This weekend the Vandals run in the biggest meet of the year, the National Championships. Unfortunately, they won't be at full strength.

With only three of their top seven runners 100 percent healthy, the Vandals face a difficult task. "This couldn't come at a worse time for us," Norris said. "At this point our top runners are fine while in our bottom four we are looking for the one that is feeling the best."

Last Wednesday night the decision was made on which runners to take. Competing for Idaho in the Seattle meet will be Patsy Sharples, Lee Ann R. Orr, Sonia Blackstock, Robin McMicken, Penny Messenger, Kelly Warren and Caroline Crabtree.

Sharples, Idaho's top runner and a freshman from Fish Hoek, South Africa, had an outstanding race taking the NCWSA Division II Regional Championship followed by Blackstock, a sophomore from Caldwell. Both runners defeated nationally favored Lori Shansby of SPU, who eventually finished third.

Competition in the national meet will come from the Air Force Academy as well as Seattle Pacific. Norris also feels South Dakota State should be considered one of the top contenders Idaho will face.

The race will be held on the 5,000-meter Tyee Valley Golf Course in Burien, Wash. Twenty-four schools from

throughout the United States will compete in the race slated for noon Saturday.

The course promises to be one of the toughest Idaho has ever encountered. It is a challenging

Injuries plague men runners

It could be a long day for the Idaho men's cross country team Saturday when it enters the Big Sky Conference Cross Country Championships in Boise at the Eagle Hills Golf Course. The 18th annual championship is scheduled to begin at 11 a.m.

The 10,000-meter course will also be the site of the NCAA District VII Cross Country Championships and will feature teams from the Western Athletic Conference. The meet is quite important in that the top three teams from the region, along with the top four individual runners not from those teams, will advance to the NCAA Championships Nov. 24 in Wichita, Kan. The meet will also serve as the WAC championships.

Idaho enters the meet with three of its top six runners out with injuries. Andy Harvey and Steve Henderson have missed most of the season with leg injuries while Steve Lauri is having problems with the arches in his feet and will also have to sit out,

leaving the Vandal title hopes behind. "Teamwise, we are a little weak with injuries," said assistant coach Bernie Dare. "So that drops us back quite a bit as there is a big difference between these runners and our eighth, ninth, and tenth runners."

But all is not lost for the Vandals. Kole Tonnemaker will go after the individual title. Tonnemaker has lost only two races all season, but the tougher competition will be familiar. Two weeks ago on the same course, the WAC and the Big Sky teams met for a tune-up race for the championships. It was a very unusual race as the seven top runners, including Tonnemaker, ran off the course. As a result, UTEP, the defending NCAA champions from last year, saw its three top runners eliminated along with Tonnemaker, and the team was disqualified.

Idaho coach Mike Keller blamed the poorly marked course for his runners getting lost.

require mental as well as physical efforts.

Meet officials report there will be 180 seniors from the 24 full teams and representatives from 21 other schools.

Joining Tonnemaker for Idaho will be seniors Ray Prentice and Gary Gonser. Both Gonser and Prentice have been coming along well for the Vandals, and both ran in the championships last year.

Last year Tonnemaker finished 16th while Prentice finished 17th, and Gonser finished 29th. Idaho, as a team, finished third in the meet last year.

With the injury problems, Mike Blanning, John Eggleston, Dohr, Rondeau and Brad Harris will fill in. Only Blanning has any varsity experience.

"It's too bad about the injuries," said Dare. "At the start of the year, we thought we were just as strong as Montana which is one of the favorites of the meet, but now, we are hoping to finish better than last place."

The Big Sky favorites along with Montana are Nevada-Reno and Weber State. Nevada-Reno is the mystery team, which hasn't run against another Big Sky team this season.

MIKE SMITH FOR SENATE

You don't have to be a golfer to play...



Miniature Golf

it's fun & Different

Only \$2⁰⁰ for 18 holes

Monday - Thursday 10 a.m.-10 p.m.

Friday - Saturday 10 a.m.-midnight

Sunday noon-9 p.m.

☆ Plus

- 9 hole putting green
- Indoor driving range
- Game Room
- Snack Bar

David's Center 3rd&Main Moscow 882-8381



intramural corner

Wrestling—Congratulations to Pi Kappa Alpha for winning the men's wrestling tournament. The individual winners of each weight class are: 130-Larry Rapford-ATO, 137-Chris Richards-PKA, 145-Colin Takatori-BTP, 152-Bruce Halverson-TMA 13, 160-Scott Edgerton-TMA 51, 168-Brad Britzman-TMA 13, 175-Bill Carter-ATO, 182-Dave Heston-PKA, 190-Don Morse-BTP, and Heavyweight-Mike Starman, DTD.

the Argonaut is accepting material for the

ART & LITERARY SUPPLEMENT

Students, staff, faculty and community members may submit poetry, prose, photographs and drawings. Bring or send your material to the Argonaut office in the SUB basement. For more information, call Ann Fichtner, supplement editor, at 885-6371 or 882-9262.

Time is running out, so hurry, hurry, hurry. You'll be glad you did, and so will we!

DEADLINE: NOVEMBER 21

classifieds

5. TRAILERS FOR SALE

Small furnished trailer. One block from SUB, 403 College No. 13. Leave message for Jeff Wragg at Physics Dept., 885-6745. Only \$1500, terms possible.

7. JOBS

CLUB MEDITERRANEAN, SAILING EXPEDITIONS! Needed: Sports Instructors, Office Personnel, Counselors. Europe, Carribean, Worldwide! Summer. Career. Send \$5.95 plus \$1 handling for **APPLICATION, OPENINGS, GUIDE to CRUISEWORLD** 151, 60129, Sacramento, CA 95860.

OVERSEAS JOBS—Summer/year round. Europe, So. America, Australia, Asia. All fields \$500-\$1200 monthly. Sightseeing. Free info. Write: IJC, Box 52-ID2, Corona Del Mar, CA 92625.

Address and stuff envelopes at home. \$800 per month, possible. Any age or location. See ad under "Wanted" Category. Triple "S".

Full time photo lab technician needed. Apply UI Photo Center, UCC 105, between 8 a.m. and noon.

8. FOR SALE

Wholesale HiFi November Specials—Electrovoice Encore 77 Speakers list \$478 now \$222.90 pair. Technics SL-D2 turntable list \$150 now \$106.70. See Brent in 227 Upham Hall or call 885-7282.

DJ's Audio. Cheapest Maxell and TDK C-90 tapes in town! Audio equipment and accessories **10-40 Percent Off** list. For quotes, call 882-6567, evenings.

Super Special. Maxell UDC-90 tapes \$2.65 each (For 10 or more) at D.J.'s Audio. 882-6567.

Washington State University offers for sale on sealed bids half/full-blooded Arabians, Thoroughbreds, Quarterhorses, weanlings, yearlings, aged in foal mares. Bids close November 25, 1980. For information, contact Dept. of Purchasing, French 220, Washington State University, Pullman, WA, 99164, (509) 335-3541.

CHILDS SKI Equip. Excell. Condition. Rossignol 100 SKIS, Tyrolia Bindings, Garmont Boots, Size 11 and Poles, \$100.00, 882-7099.

Peugeot PX-8 bicycle 21 inch frame. Good condition \$250.00 882-9421 evenings and weekends.

9. AUTOS

'66 Dodge P.U. ¾ ton good hauler. Needs work. For sale or trade. Best offer. 882-9630.

1960 V.W. Bug, cloth sunroof, good around town car. \$600.00 or best offer. 882-9380 883-0757.

11. RIDES

Need ride to Portland for weekend of Nov. 21. Will share gas costs. Contact Kathy B., 882-9861.

12. WANTED

School teacher wants correspondence with female university student for friendship. Write: Mr. Lou L., Box 552, West Covina, California, 91793.

Snow Tires. Decent condition for Datsun. Size 14's. Low priced. Call 882-7943, evenings, Brian.

Address and stuff envelopes at home. \$800 per month, possible. Offer, send \$1.00 (refundable) to: Triple "S", 16243-Z56 Cajon, Hesperia, Ca, 92345.

14. ANNOUNCEMENTS

Tuneup, at your home, parts included, 4-cylinder cars only \$30, experienced mechanic, 882-1162 evenings

RPCV's. Interested in a potluck? Please contact Rhonda Fairgrieve, U-I Peace Corps campus recruiter, UCC 241, 885-6757, 882-4496.

Have you ordered your photo X-mas cards yet? Do so soon at **ELECTRUM LABS** in the **PERCH**. 883-1155.

LIVING GROUPS: Don't forget to call the ASUI Photo Bureau for the GEM group photo. Ask for Steve Davis or Kathy McInturff, 885-6371.

16. LOST AND FOUND

REWARD! A briefcase containing important legal papers was taken from my truck Saturday night. Reward for return of contents. **NO QUESTIONS.** Call 882-8271 or see Dan Spickler in Law School Basement **PLEASE.**

Lost: HP-21 calculator about two weeks ago. Please call Dale at 882-0326. A Reward is offered.

Found: Woman's gold class ring while hiking. Elizabeth A LA BROAD. Did you lose it? Call

885-6886. Ask for Sarah. LOST: One HP-29C calculator in JEB 221 about two weeks ago. It belongs to Mike Kopper at 882-9805. THANKS

17. MISCELLANEOUS

Free kittens. Black and white. Approximately seven weeks old, call 882-6191.

Christmas Bus — Idaho Falls — return. Leave 4:30 p.m. Dec. 18, return January 11. \$63.00 round trip. Mrs. Love, Idaho Falls. Contact Program Office, SUB

Looking for the finest Ektachrome E-6 slide film processing? Strict quality control guaranteed at **ELECTRUM LABS** in the **PERCH**. 883-1155.

Conservation research grants offered

Grants of up to \$4,000 are being offered this year as part of a joint effort by the American Petroleum Institute and the National Wildlife Federation to support research into the interface between drilling for oil and the conservation of natural resources.

The program is designed to partially support a large number of researchers rather than fully fund

only a few, according to Thomas Kimball, executive vice president of the NWF. Preference will be given to investigation of topics of contemporary concern, Kimball said.

Deadline for applications for the fellowships is Dec. 31. Interested persons may contact Nancy Weller, University of Idaho grants officer, Morrill Hall, at 885-6651.

COFFEE HOUSE



9 p.m.
Mike Haberman
with guitar &
vocals

10 p.m.
Adrienne Bean
with banjo
& vocals

8 p.m. Open Mike
FREE COFFEE

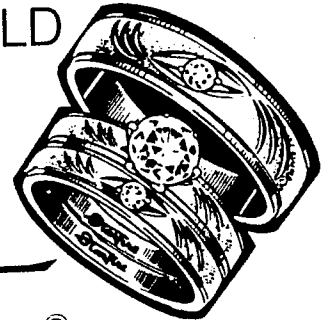
FREE HONEYMOON VACATION

3 DAYS AND 2 NIGHTS IN MIAMI BEACH
LAS VEGAS OR DISNEY WORLD

For a limited time receive a FREE honeymoon vacation with a purchase of any engagement set and man's wedding band. Thousands of ring combinations to choose from. Come into any Heritage Keepsake Diamond Center to see our extraordinary selection of wedding sets.

Accommodations only.
transportation not included.
Offer Expires November 30, 1980

Heritage
Keepsake[®]
diamond center

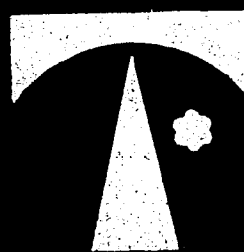


PALOUSE EMPIRE MALL MOSCOW, IDAHO



OVER 99
ITEMS

SALE LIMITED TO
STOCK ON HAND



ri-State



1104 PULLMAN RD. MOSCOW IDAHO

FIRST COME FIRST
SERVED
FOUR BIG DAYS
PRICES EFF NOV. 14-17

TELEPHONE BOOK TREASURE HUNT

50% off

WHAT IS IT???

50% off

If your name is listed in the 1980 U of I, Moscow, Bovill, Deary, Elk River, Genesee, Potlatch, Pullman, Garfield, Palouse, Troy, Lewiston, Clarkston, Anatone, Asotin, Cottonwood, Ferdinand, Craigmont, Reubens, Winchester, Flora, Troy, Grangecille, Kamiah, Kooskia, Stites, Lapwai, Culatesac, Lenore, Nez Perce Phone Books.

HOW IT WORKS!!!

Come into Tri-State this Fri., Sat., Sun., or Mon., Nov. 14-17. Look for the special yellow sale signs. They indicate telephone book sale items, there are over 99 items located throughout the store. Your name is one several of these items. Find your name. If you want the item identify yourself to a sales person in a yellow vest, they will give you a coupon for that item and you just saved 50%!

RULES!!!

No employees or families are eligible to participate. Items limited to stock on hand. First come first served. One of an item per family, no layaways, you must have identification.

HERE ARE A FEW SAMPLES OF THE MERCHANDISE ON SALE:

- Felt western hats
- Spalding basketball shoes
- Mens Lee jean vests
- Dickie Painter pants
- Floor Pillow
- Snuggle Blankets
- H-Lift jack
- Auto Floormats
- Luggage Carrier
- Battery Charger
- Gun Racks
- Sharp Calculator
- Sleeping Bag
- 7x35 Binoculars
- Sunbeam iron
- 7pc Cookware
- Regal Griddle
- GE Can opener
- Archery set
- Backpack
- Electric heater
- Cixc. saw
- Electric Sander
- Bench vise