

ARGONAUT

Tuesday, October 4, 1983

Vo. 89, No. 13

University of Idaho

By Jane Roskams
of the Argonaut

Nightline

Hello — Nightline, can I help you?"

"Yeah, well, I don't know, I mean I really don't know why I'm calling ..."

"Hello, are you still there?"

"... Yeah. Well, it all started last week, I really don't even know why the hell I'm talking about it, I mean I guess it's the sort of thing that happens to everyone but; you know I'm just so pissed I really feel like telling the world where to go. Do you know what I mean?"

"Perhaps you should just tell me what's happened. Then we can talk about it."

"Well, I don't know, it's Jim really; he knew I was upset about my GPA, and I really didn't mind about his drugs, but when I walked into that party and saw him with that other girl, I just flipped out ... Are you still there, is anybody listening?"

This conversation is simulated, but it could be any one of the many calls that Nightline handles each year. The caller, perhaps not suicidal, but definitely a victim of chronic depression, is looking for a friend; a shoulder to cry on; a confidential ear; just anybody who is going to give her the chance to talk about her problems without making her feel like a burden.

There are 50,000 identified suicides in the United States each year. That means that every 17 minutes somebody takes their own life — and those are only the reported cases. There are probably tens of thousand other suicides that are not reported or confirmed, according to Pat Matuszek, the University of Idaho and Washington State University Nightline director.

If it weren't for the national nightline network, that number could be greater still. Part of that network is the UI Nightline.

The name Nightline can be a little misleading — the service is actually in operation 24 hours a day, 365 days a year. The Nightline, incorporating 20 students of the UI, recently merged with Crisis Line at WSU and both are operated under Matuszek's direction.

Matuszek, a graduate of WSU, has been doing the job for 5 ½ years now, and can only be described as "totally dedicated."

She came into the field of counseling almost by acci-

dent. Having gained her degree in psychology, and masters in counseling psychology, Matuszek found herself in Germany, accompanying her husband, who was in the military at the time.

In Germany, she was horrified to find that in a community of 200,000 people, there were only two social

workers and one psychologist. So, being qualified in that field, she "lent a hand" and so became involved in counseling. She moved back to the Palouse area when her husband decided to resume his academic career at the UI, and fortunately for her, the vacancy for crisis line director came up at exactly the

same time.

Nightline deals with some 40 calls per month, Crisis Line with 90. Many of those calls are from people who are seriously contemplating suicide. Robert, a senior at the UI, said, "I've only been involved in Nightline for eight months and during that time I have answered a lot of calls; two of those were serious

suicide threats."

Of course, not all the calls that Nightline receives are from people who are suicidal or even very depressed.

Matuszek says, "We do have some clients who we call every evening just to be a contact for them. Many of these people may be old, or just very lonely, and it gives them a real kick to know that someone is going to call at a certain time and ask them how their day has gone, what they've done, and just make conversation." She lists their three most common calls as interpersonal conflict, personal depression and suicide.

Another popular myth is that all volunteers on the Nightline are either do-gooders or Christians. Naturally, people in that mold are involved, but Nightline is operated by what Matuszek describes as "people from the ages of 18-60, with interests ranging from architecture to football to repairing motorcycles and bareback riding." The only thing common to all these people is a sense of caring, empathy, and a desire to help people, she said.

Matuszek says she will welcome anybody who is willing to help on the line. "It's fantastic when we can get someone who has actually been helped by us in the past. If you've lived through a personal crisis yourself, you can understand so much better what a caller is going through."

Nightline, in its broadest sense, is a learning experience, both for counselor and client — the process usually being one of helping the caller to deal with pain. This experience of pain can either lead to growth, or to totally negative feelings of suicide. The Nightliners try to teach their clients that whatever they are going through can be looked back on later as a lesson learned, and one less bridge left to cross.

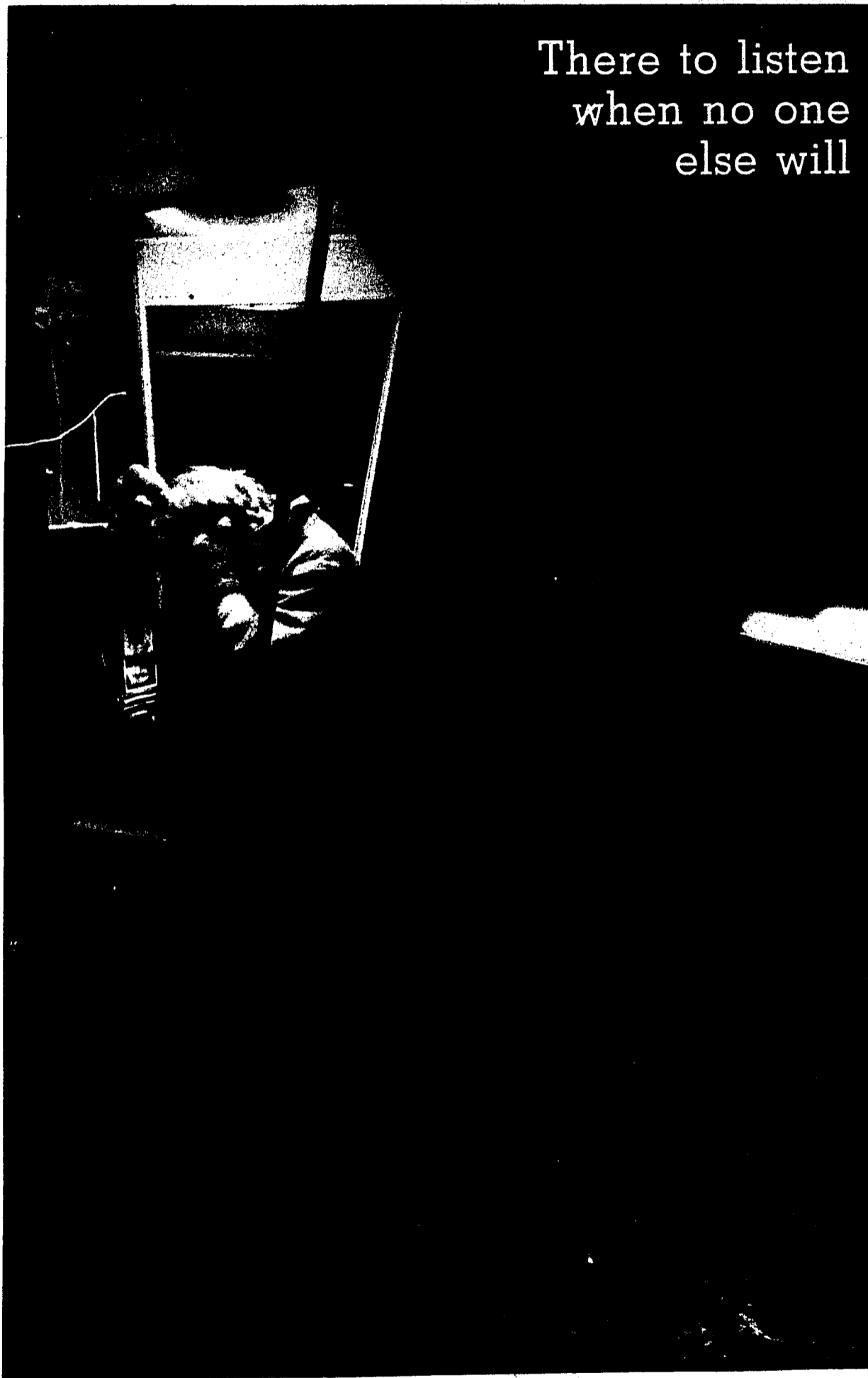
Robert thinks that he has learned more about people since he joined the line than he could have in years in any class.

"I've gotten more out of it than I've put in. It's taught me how to communicate with people, and how to listen and hear other people's viewpoints than your own," he said.

Bruce Palmer of the Department of Psychology at

See **Nightline**, page 15

There to listen
when no one
else will



Campus

Two suspects sought in UI hi-tech caper

By Bill Bradshaw
of the Argonaut

A possible attempt to gain access to University of Idaho student financial aid records is the subject of an investigation by the university and the Moscow Police Department, UI and police spokesmen said Monday.

University officials discovered the attempt, which was made Sept. 21 and foiled by security devices built into the computer system, according to William Accola, director of UI Computer Services. He then reported it to Financial Vice President David McKinney.

McKinney has not been available for comment, but Terry Armstrong, UI executive assistant to the president, said the investigation has centered on at least two suspects and will probably end up in court.

"We have at least two suspects in mind," Armstrong said. He would not say if the suspects were UI employees or students, but said "I understand there is to be some involvement from the student judicial sector."

Armstrong also said that "Both parties now deny that any of this ever happened," so he expects legal action to be taken.

If a student is found to be involved in a break-in to confidential records, he or she could face possible expulsion from the university by the student judicial council. An involved UI employee could have his or her employment terminated. Either could face possible criminal charges.

MPD Sgt. Sheldon Russell confirmed that the Moscow police are conducting an investigation which is expected to take "a couple of weeks." Once completed, he said, the results would be turned over to the county prosecutor for a decision on whether or not the law was broken.

One of the main questions the investigation will try to answer is how the access password was obtained by whomever attempted the break-in. The password is necessary for an operator to receive specific information from the computer.

Hundreds of persons at the university, students and employees alike, have passwords and the attempt

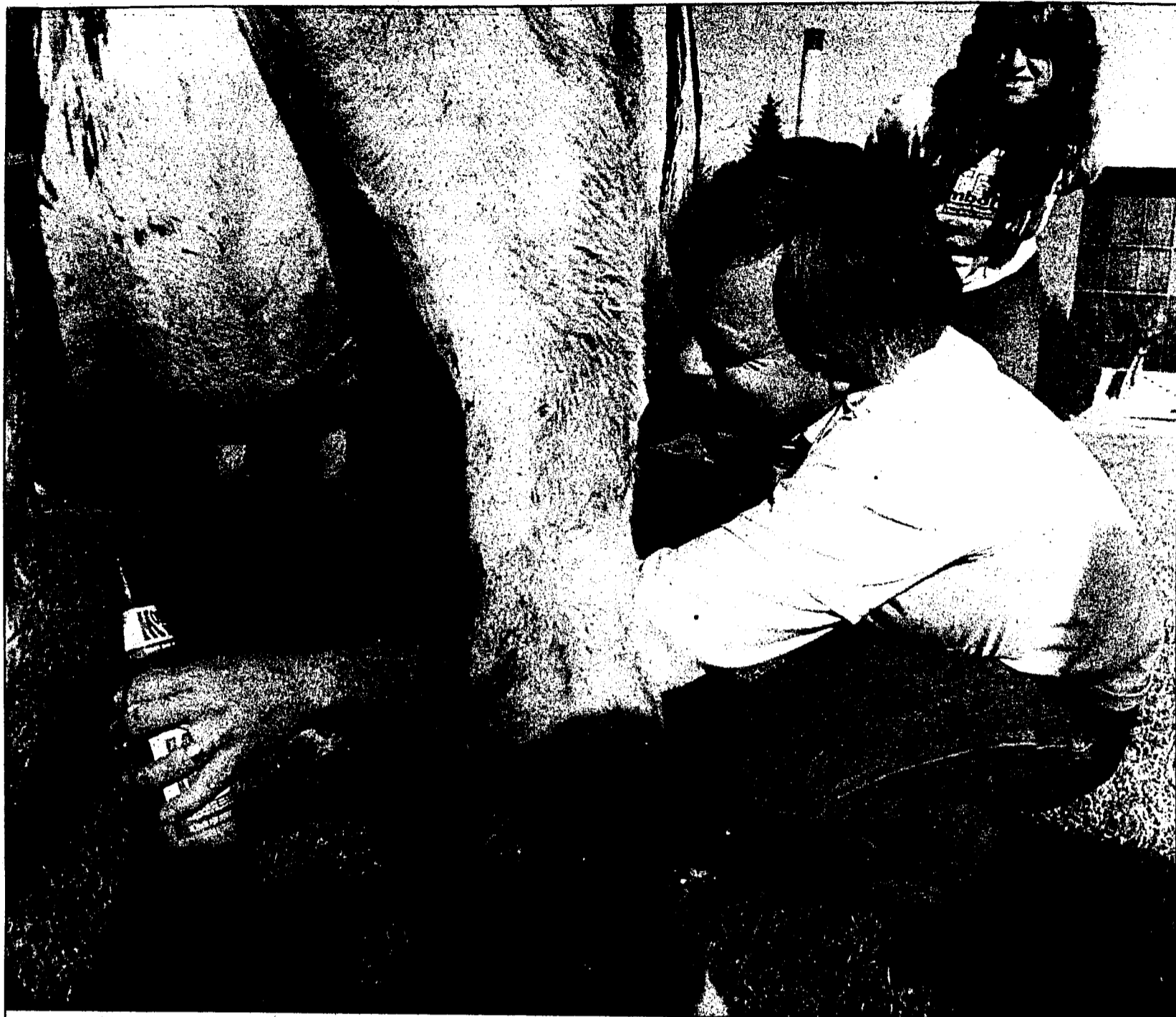


Photo by Scott Spiker

Lanore Studer watches contestant Larry Branen give his best squeeze during the Aggle Days cow milking contest held Saturday on the Ag Building lawn.

could have been made at any one of the approximately 300 computer terminals on campus.

Accola said the location of the terminal used in the attempt is known, but declined to say where.

He said passwords are changed every 24 hours as a regular security measure, and they have been changed since the alleged attempt.

Bill would give Nightline \$700

Nightline may receive additional help from the ASUI Senate after all, if a bill allocating \$700 for the program passes at the Senate meeting Wednesday.

The Senate had previously turned down a request of \$1,000 for the funding of the crisis hotline at their meeting Sept. 20.

Nightline, which had asked for an initial \$2,000 from the ASUI, trimmed it after discovering that it had already received \$1,000 from the ASUI which officials hadn't expected. The request for the additional funds, however, didn't meet with Senate approval.

Sen. Jane Freund submitted the current bill appropriating \$700 for Nightline, which was sent to the Finance Committee at the meeting last week.

A proposed bill, which would restrict student media from publishing the names of appointments to ASUI boards and committees, was to be discussed at a meeting of the Ways and Means Committee on Monday. Alternative proposals were also to be discussed, with a formal agreement possibly emerging from the meeting.

More appointments will also surface at the meeting which will

be held at 7 p.m. Wednesday, in the Chiefs Room of the SUB.

In other business, senators are scheduled to meet with the Tri Delta and Alpha Phi sororities, Tuesday at 6:30 p.m. for a question and answer session about the Idaho Task Force for Higher Education preliminary recommendations.

If it goes over well, other question and answer sessions may be initiated between other living groups. "I'm sure it'll go pretty well," said Sen. Frank Childs.

Council to hear regents' report

During today's meeting of the University of Idaho Faculty Council, Chairwoman Dorothy Zakrajsek will give her report on the results of the Board of Regents' meetings. Zakrajsek attended the meetings last week

in Gooding.

The revised version of Procedures for Faculty Appeals will also be presented to the council for consideration and action. The revisions, to section 4761 of the Faculty/Staff Handbook, are aimed at speeding up the faculty appeals process.

Faculty Secretary Bruce Bray explained that present policy calls for a new hearing board to be established with each new appeal. Bray said this method lacked continuity and familiarity by the board members with the appeals process.

The proposed revision, which establishes a single standing committee to hear appeals, would "streamline the procedure", according to Bray. It would also bring "uniformity" to the way appeals are judged, he said.

The meeting will be at 3:30 p.m. in the Faculty Lounge.

ARGONAUT

Editor
David Neiwert
Managing Editor
Brian Beasley
News Editor
Paul Baker
Features Editor
Gary Lundgren
Sports Editor
Don Rondeau
Frank Hill
Associate Editor
Bill Bradshaw

Copy Editor
Leslie Smallwood
Production Assistant
Valerie Pahl
Business Manager
Dan Griffiths
Advertising Manager
Suzanne Gore
Asst. Ad Manager
Mark Kees
Public Relations
Director
Kate Bohmer

Account Executives
Cheryl Bracht
Jennifer Levanger
Mike Long
Terri Lynch
Kurt Meyer
Kristy Meyer
Liz Mollring
Tana Rued
Paul Speck
Rachel Steele
Ken Vernon
Everett Walker
Gloria Willis
Kelly Wood
Brian Wright

Photo Bureau Director
Penny Jerome
Photographers
Monte LaOrange
Scott Spiker
Julia Yost
Michele McDonald
Reprographics Director
John Pool
Reprographics Staff
Stephen Bray
Leslie Alley
Alicia Gallagher
Steve Nelson
Mark Scott
Laurie Weeks

Staff Writers
Kathy Amidet
Laurel Darrow
Robert Dillon
Anna Eaton
Eberole Gaines
Charles Gallagher
Laura Hubbard
Mike Long
Leticia Maxwell
Dana Rosenberry
Kimberly Sliker
Maribeth Tormey
Debbie Fitner
Jane Roskams

The Argonaut is published twice weekly during the academic year by the Communications Board of the Associated Students of the University of Idaho. Offices are located in the basement of the SUB, 820 Deakin St., Moscow, ID 83843. Editorial opinions expressed are those of the Argonaut or the writer, and do not necessarily represent the ASUI, the UI, or the Board of Regents. The Argonaut is distributed free of charge to students on campus. Mail subscriptions are \$10 per semester or \$15 per academic year. Second class postage is paid at Moscow, Idaho (USPS255-890).

ON THE COVER

A telephone can offer refuge for UI students who need someone to help cope with their problems. Photo by Julia Yost.

Program exchange concept isn't flawless

By Lewis Day
for the Argonaut

Recent recommendations for issuing a "role and mission" statement for each of Idaho's universities and the state college could reshape higher education in Idaho (see story, page 6). These statements, coupled with the Idaho Association of Commerce and Industry Higher Education Task Force's (IACI) recommendations, would substantially alter education, if passed by the board and the legislature.

Issued last week, the role and mission statements advocate the designation of "lead" schools in each of several academic disciplines: engineering, health sciences, performing arts, social sciences and international programs.

At last week's meeting of the board, the presidents of the schools affected all voiced opposition to the plan, saying that the lead designation could result in the dismantling of similar programs at the three other schools. Board Executive Director Charles McQuillen disagreed, saying, "These recommendations portray the strengths of the system now."

If the recommendations were passed today Idaho State University would be designated the lead institution for the health sciences. ISU does enjoy a reputation for its health-related programs, but a question which hasn't been resolved is the role Lewis-Clark State College would play in health professions education with ISU as the lead institution. Currently, LCSC offers a program in nursing, with training at St. Joseph's Hospital. Would the LCSC program be dismantled? The recently released IACI recommendations advocate downgrading the Lewiston school to community college status. One could be forgiven for assuming that there is some correlation between the staff's report and that of IACI.

Boise State University has NASA to meet

The Native American Students Association, composed of approximately 60 University of Idaho students from many different tribes, will hold a meeting Thursday, Oct. 6 at 4:30 p.m. at the Campus Christian Center.

The NASA, formed in 1971, is currently conducting joint projects with the Washington State University chapter, attending local pow wows, constructing a homecoming float to increase the organization's visibility and informing others of Native American heritage.

Rodeo queen named

Marcie Warlick, a junior in public relations and advertising at the University of Idaho, has been crowned the 1984 Idaho Western Classic Rodeo Queen by the UI Rodeo Club.

Dorothy Ferguson, a UI agribusiness major, was named princess and, along with Warwick, will represent the UI Rodeo Club

been given the mantle in the area of the social sciences. Perhaps the most delicate of the proposals, this would change the face of the UI. Effectively, the graduate programs in these areas — fields in which the UI has had preeminence for nearly a century — would be dismantled and reassembled at BSU. Aside from what would happen to the programs slated to be moved, the effect on the UI College of Letters and Science could be devastating.

The performing arts program at the UI would also take a cut according to the plan, which advocates establishing BSU as the center for performing arts education in Idaho. Doubtless, the

An analysis

Morrison Center at BSU yearns for a first-class program; Idaho's preeminence in music and theatre must gall BSU administrators.

The UI, under its role and mission statement, would be designated the lead institution for engineering programs and international programs. The engineering designation is, along with the good reputation ISU enjoys in health education, the one area in which McQuillen's statement that the strengths of today's system are reflected in the role and mission statements can be seen to be true. The UI College

of Engineering would presumably be strengthened — at the expense of other programs in the state.

The expansion of international programs and engineering would surely be welcome at the UI, but to what absolute good? With a restructured Graduate School and College of Letters and Science, the UI would scarcely be able to claim to be a comprehensive institution in which quality research and scholarship can be conducted. The dangers of transporting graduate programs in the social sciences to BSU are obvious. The Boise school doesn't have strong programs in these fields now, nor does it have the foreign language

curriculum necessary to support graduate work in history and political science.

With all the questions raised — and by the presidents, no less — the role and mission statements, as they now stand, will come under careful scrutiny. Already the press in Pocatello, Moscow, Boise and Lewiston has reflected local fears of downgraded programs and a perception of second-class status for the papers' hometown schools.

Those perceptions — be they true or false — will have to be dealt with by the board before any substantial changes can be effected in Idaho higher education.



Not so long ago, in a galaxy not so far away, America's number 1 pizza delivery company made students an offer:

If your group orders more pizzas than competing groups, you'll win a free pizza party!

It's so easy to play. Call your nearest Domino's Pizza store for details.

Domino's
Pizza
Delivers™

DORM WARS™

The Contest: Domino's Pizza will award free, a pizza party to the group purchasing the most pizzas starting October 3, 1983 and running through October 16, 1983.

The Rules:

- Domino's Pizza will keep a record of exactly how much pizza is ordered and delivered to your floor, by dollar amounts. Any pizza ordered during LUNCH, and any pizza over \$12.00, will count twice. (Lunch hours are from 11:00 a.m. - 3:00 p.m. daily).
- The dollar amount per capita will be used to determine the contest winner. (This way every floor, no matter what size, has a chance to win).
- The free pizza party will include a large, 2-item Domino's Pizza for every 3 people on your floor, and a Coke for each person. You may have the party anytime between November 1, 1983 and the end of this academic semester.
- Each dorm floor is automatically entered in the contest. Be sure to identify your floor when ordering your Domino's Pizza.
- This contest is taking place in Pullman-WSU, and Moscow-UI, at the same time. The contests are separate, with separate winners.
- Feel free to call the Domino's Pizza store manager at anytime during the contest for information on contest standings.

Fast, Free Delivery
308 N. Main
Phone: 883-1555
Moscow
Our drivers carry less than \$20.00.
Limited delivery area.
©1982 Domino's Pizza, Inc.



Opinion

A state plan to rip off UI

Will University of Idaho students who enroll in a political science major find that they'll have to transfer to Boise State University in a few years to get their degrees?

Right now it doesn't seem too likely, but the possibility of just that happening has raised its head recently. Officials of the state board of education are considering transferring programs — and the funding that goes along with them — from institution to institution within the state. The idea ostensibly is to enable the state to offer programs geared to excellence at individual schools rather than having mediocre programs at all of the schools.

Those officials offer assurances that none of the existing programs will really be cut as a result of the plan; there will just be some programs at some schools that will receive more of an emphasis than others.

What that inevitably means, however, is a program that will discriminate against the University of Idaho and favor the state's two other major institutions. That's because the UI already excels in more programs than Boise State and Idaho State.

UI already has outstanding programs in agriculture, forestry, engineering, architecture and performing arts — at least, they're easily the best in Idaho. But at ISU, one can only really point to pharmacology as an outstanding program. And at BSU, there isn't much but a football team and one of the worst libraries in the Northwest. They have a great performing arts center, though.

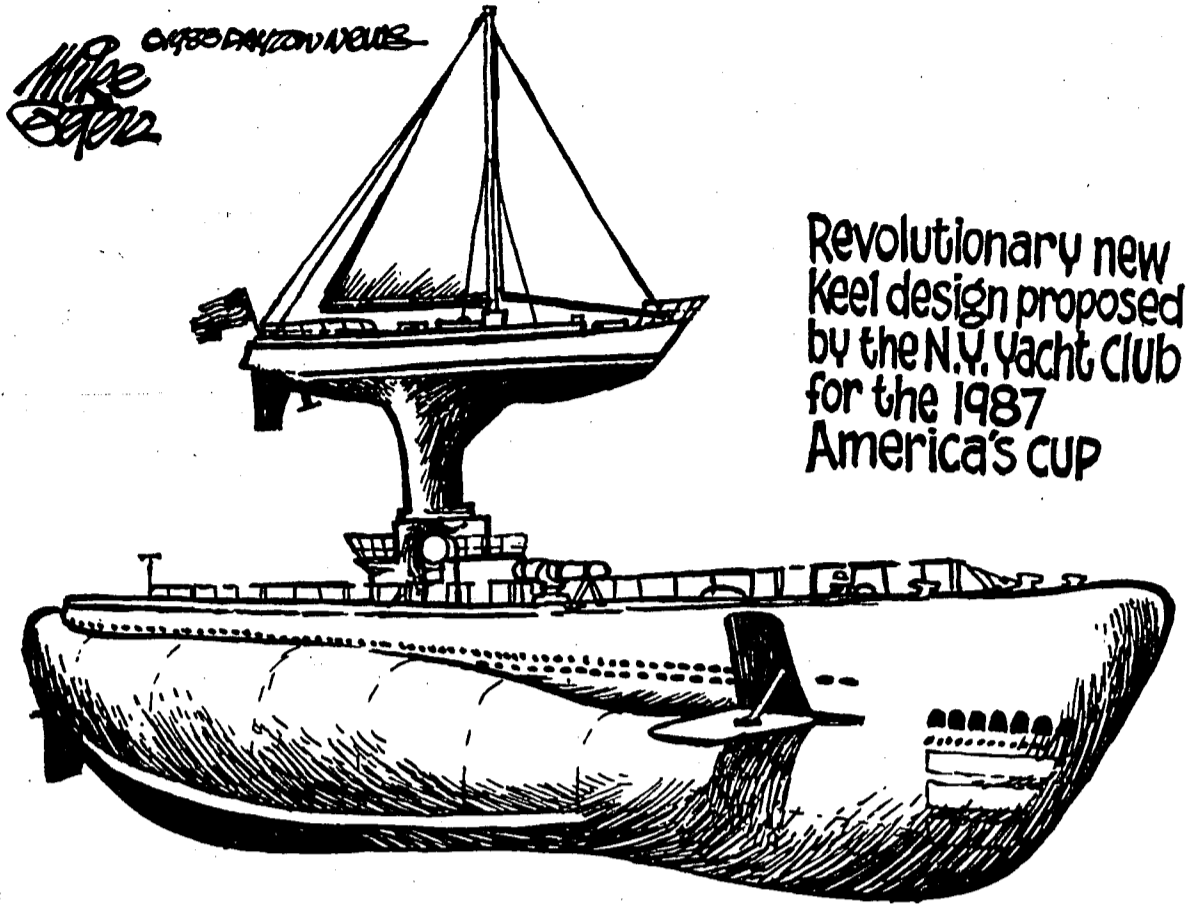
So if there are emphasis transfers coming, UI will be the loser. You can bet, for example, that ISU's pharmacology emphasis won't be transferred to UI; and UI doesn't really want to become *the* football school. But it's entirely likely that the emphasis in political science or music programs might be shifted to BSU. And despite assurances that current programs won't be affected, the history of financing higher education in Idaho would suggest otherwise.

Under this kind of system, it naturally will be tempting to Idaho's legislators, many of whom are known to have all the sensitivity of a rock when it comes to higher education, to look at their budgets and ask: "Why don't we just cut out UI's political science department altogether, since we're spending all this money on the BSU program?" Assurances now are one thing; but the system must be constructed to ensure that the assurances come true.

There's no problem with trying to build up BSU's and ISU's programs; they, like UI, deserve better funding than they have received recently.

But it doesn't make much sense to build up one program at the expense of another. Instead of all this talk about transfers, why don't state officials simply look at excellence at all three of the major institutions?

— David Neiwert



Revolutionary new Keel design proposed by the N.Y. Yacht Club for the 1987 America's Cup

Brian Beesley

Questions I can't answer

Mind you, the Faculty Office Complex was by no means a descriptive name; and it really didn't help much when they split the building into FOC East and FOC West. But Archie Phinney Hall? Carol Ryrie Brink Hall? My life isn't tough enough, somebody somewhere has to complicate it by renaming a building that's already near impossible to decipher.

Okay, so after five-and-a-half years here I should at least know my way through the FOC ... er, Archie Phinney and Carol Ryrie Brink Halls. Sorry, gang, but I don't. The place is a veritable maze. Once inside those narrowed hallways you have no sense of direction, no real landmarks to work from. It becomes an all out search-and-rescue mission just trying to find a professor's office.

I wonder who trains new faculty residents to find their way through the FOC ... uh, Archie Phinney and Carol Ryrie Brink Halls? Wasn't there a campus tour guide position created not too long ago? Didn't they chose a former trapper in the Simka wilderness area? Would he be willing to lead me through the FOC ... I mean, Archie Phinney and Carol Ryrie Brink Halls, sometime? Should I bring a change of clothes and a week's supply of food?

A friend has been bugging me to ask the burning question, "How come the Vandal athletic teams and their opponents don't take the field for the national anthem during home games?"

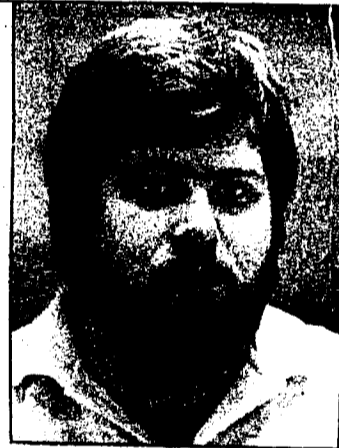
After tossing around several ideas, I've narrowed it down to two possibilities: the players are either just slow suiting up for games, or they're being forced to read too much Marx in their upper division political science/economic classes and as a result have developed unpatriotic attitudes.

Now that the players suit up in the East End Addition and don't have to travel from Memorial Gym to the Kibbie Dome, that is not a plausible excuse as to why the no-shows. The latter, while interesting to note in so much as football is a socialistic sport in terms of purpose, is extremely unlikely.

Which leads me to conclude they are all just slow dressers. So to you UI football and basketball players: for the Mom, apple pie and the American way of life, let's try to get dressed a little quicker, whaddaya say?

Another friend has been bugging me to call attention to the way the Placement Center handles each semester's job interviews. If you're an engineering major, you know what I'm talking about: the old "hurry up and wait" routine.

Not being an engineering major or someone who



Brian Beesley is a UI senior majoring in journalism and is the managing editor of the Argonaut.

depends on those campus interviews, I don't feel I can comment on the matter, other than to say I'm thankful I don't have to go through that shit. From all the rugged stories I've heard about the whole business, I wonder if there isn't a better way of doing it. But I'm sure the Placement Center folks are doing their best under the circumstances.

They could still use some help, though. Patience, they say, is its own best virtue. Well, somebody ought to market it around here. A person could make a mint just setting up a selling booth outside the Placement Center some night before job interview sign-ups. Does anybody know where I can get some? And I'd really rather not wait for it.

Is nothing sacred? Now they're running down the Duke. Will somebody please tell me what all these radical feminist historians have against John Wayne? Seems a gang of them at Washington State University want to rewrite western history so that women have a bigger role and violence a smaller one.

Never mind that it may make for a more factual representation of what actually happened during our country's early years settling the west. What I'm worried about is the impact such liberal ideas will have on our young people.

What will happen to all those shoot-'em-up western heroes we Real Men grew up emulating? Are our Real Tots (the Real Men of the future) going to have to grow up idolizing a bunch of limp-wristed pantywaists who actually conquered the West through dogged determination and tireless fortitude?

Are they going to have to get used to the fact that the "weaker sex" indeed played an integral part in making this country as great as it is? Will the books they read and movies they see be missing all that exaggerated excitement, sexism and bloodshed that made the Pseudo West so macho?

One can only hope.

Letters

Grade 2 intellect?

Editor:

Ever since my early days in high school, I have always tried to nurture a certain amount of healthy apathy towards that pestilential breeding ground for politicians known as student government. However, I am no longer able to resist hurling a little mud of my own at the fearless leader of our own beloved ASUI. The recent resurfacing of the events surrounding the eloquent browbeating of an innocent senator by an irate President Green arouses in me an irresistible urge to sarcasm.

I wish to differ with Dave Neiwert's assertion that Scott Green is guilty of conduct unbecoming an officer of the ASUI. I feel that President Green is actually guilty of conduct unbecoming any rational adult with even an extremely limited grasp of the English language. I am, quite frankly, thoroughly unable to comprehend how Mr. Green can live with the humiliation. I do not believe that I could bear it if it were common public knowledge that I used phrases that any reasonably coherent sixth grader would think twice about uttering.

Certainly, our mighty president could come up with something more sophisticated than, "I hate your guts." He might, for example, have chosen to be cultured about the whole thing and said something like, "We seem to have a major personality conflict here." He also could have chosen something a good deal more emotional as well as a good deal less printable. I really believe, however, that he would have had to dig quite hard to come up with something more absurd. Do you realize, Mr. Green, how incredibly stupid it sounds when someone actually uses the phrase, "I hate your guts?" Well, just let me say that it sounds very silly. "Guts," after all, by their very nature, are quite repulsive. I would find it rather disturbing if the public were to discover that there are certain types of guts that you enjoy.

I sometimes wonder about the many, heated intellectual exchanges that occur behind locked doors at the secret meetings of Moscow's power elite. When I'm feeling particularly silly, I speculate about this high level verbal interaction. If other members of our governing body share Mr. Green's razor wit, the meetings must go something like this:

"You take that back!"

"Can't make me. Nyaaa, Nyaaa."

"You take that back or I'll tell my mommy!"

"Oh yeah, well my dad will beat up your mom!"

"Oh yeah, my dad will beat up your dad!"

"Your dad couldn't even beat up my sister!"

"You take that back!"

Anyone with an intellect evolved

beyond the second grade can continue the scenario, although it really has nowhere to go but down.

Actually, I am probably being a bit unfair to President Green. After all, others in his administration have also made grave errors. Take, for example, Richard Thomas, the humbled victim of Scott Green's bellicose barbarity. Mr. Thomas, whatever led you to resign? You have committed an unforgivable political faux pas. Just think of the power that might have been yours. With time and cunning working for you, you might have rallied the opposition to your side. With intelligence and good timing you could have delivered the crucial blow that would have shorn President Green of his formidable verbal defenses and sent him running to tell teacher what a naughty boy you have been. Then you could have seized the reigns of power. Then, comfortable at the helm, you could be having all of the fun. First, of course, you would have to silence the press. But, it was not to be. Oh well ...

While still in the mood to be fair to President Green, I would like to say that I really do try to give him the benefit of the doubt when I ponder his intelligence. I, after all, am just a simple sort and do not understand all of this political maneuvering. It may well be that this whole affair is part of some brilliant, grand political strategy. I can almost visualize Mr. Green striding up to all those nasty legislators who keep trying to institute in-state tuition. I can almost hear, "We just won't play anymore!" What broad political foresight Scott must have. I submit to you that with leaders of this calibre, we need never wonder where higher education in Idaho is headed.

Finally, in keeping with my usual unrestrained absurdity, I find myself wishing that Scott Green would run for president again next year. After all, it will be 1984. I cannot speak for the average *Argonaut* reader, but I, for one, would derive a great deal of amusement out of supporting a challenger running with the slogan, "Big brother hates your guts."

Doug Quarnstrom

Brand new bread spread

Editor:

To equate the rather recent aberration commonly called "fundamentalism" with the long and honorable history of Christianity's Book seems to me rather like spreading dung on good bread.

In his letter of 30 Sept. on this page Pastor Clinton R. Keaton exposes himself as an idolater of graven images who has placed a book in the place of the One that book points at. He should get his directions straight before giving others instructions.

The Bible did not bring forth the Church: rather, the Church brought forth the Bible.

Pastor Keaton should remember that this book belongs demonstrably to the whole people of God and testifies to the Church's original faith as that community called out to participate in their resurrected Lord's new life. The Bible belongs to the whole Church, Pastor Keaton, not just to premillennial fundamentalist preachers and their flocks. It belongs to me and Roy Pierson as well as to you.

I dare Pastor Keaton to try to confiscate my copy if in fact it only belongs to fundamentalists.

Pastor Keaton might also take note that in order to be truly in the mainstream of biblical teaching, one must first believe in God and in the lordship of Christ Jesus and in the fellowship of the Spirit. This Church is the sacrament of our personal and corporate encounter with Jesus and, through him, with God by the working of the Spirit: it is *not* simply a gathering of people who believe literally in every word in the Bible.

I affirm that the Bible's viewpoint is different than Pastor Keaton's, for it includes in it generous offer rather than excludes all of us who in our humanness are "off the mark" (the literal meaning of the Greek word translated as sin). It has ever so much more to offer than do the pointing fingers and nasty mouths of pharasaic zealot fundamentalists such as Clinton R. Keaton and Iran's Ayatollah Khomeini.

Stephen Bray

A case of bad timing

Editor:

I feel a response to Mr. Neiwert's Sept. 4 editorial is needed. This article seemed to focus on two points. First, the fact that Nightline is a very promising and beneficial service not only to the Moscow and Pullman communities, but also to the students of the University of Idaho. This is very true, and I am appreciative of Dave for exposing Nightline's credentials as well as encouraging troubled students to take advantage of its services. Nightline's improvements over the last few years are indeed exceptional and deserve our commendations.

The second matter at hand was the accusation that the ASUI Senate was not adequately supporting Nightline. This conclusion was reached because the senators failed a bill which would give \$2,000 to the service. My reason for opposing that piece of legislation was not because Nightline wasn't serving our students sufficiently, as the article implied. The sole reason for my opposition was the fact that we would be giving the money now, which they did not plan to expend until after Jan. 1, 1984. I would surely be in favor of a bill financing this organization if presented at a later date. Keeping in mind the ASUI's consistent contributions in the past years, Nightline should not worry that we would eliminate them from our considerations.

In conclusion, I feel Nightline is a very beneficial service, and I am looking forward to working with them in the upcoming months.

Terry McHugh
ASUI Senator

Many people speaking out on a vital topic

Editor:

What does "scam" mean to me? I love it! This word gives me something to say when all other words fail to express the full emotional depth of a situation or experience. Sometimes I am on the utter verge of tears with a cascade of feelings inside me, crying to pour themselves out, and yet, there are no words.

Then, like the sun streaming through the clouds, like the sound of a thousand violins, the word "scam" says: "I am here. Use me." And I do, I will, and always shall, until every dictionary dies away, every vocabulary is vanquished and the word "scam" stands alone, finally unveiled and set free.

Viva la scam!

Janet Johnston

... This is directed to Mr. Name Withheld Upon Request who wrote that letter in the *Argonaut* last week complaining about the word scam.

Mellow out, Mr. Name Withheld! Mellow out. I like the word scam. I've used that word from time to time in the privacy of my own room with a few close friends and I see nothing wrong with it. Contrary to what is sometimes heard, moderate use of the word "scam" has caused no loss of memory, no early aging, and no genetic damage in anyone I know who has used the word. In fact, a mild sense of euphoria and well-being is the only side-effect I've ever noticed to its long-term use.

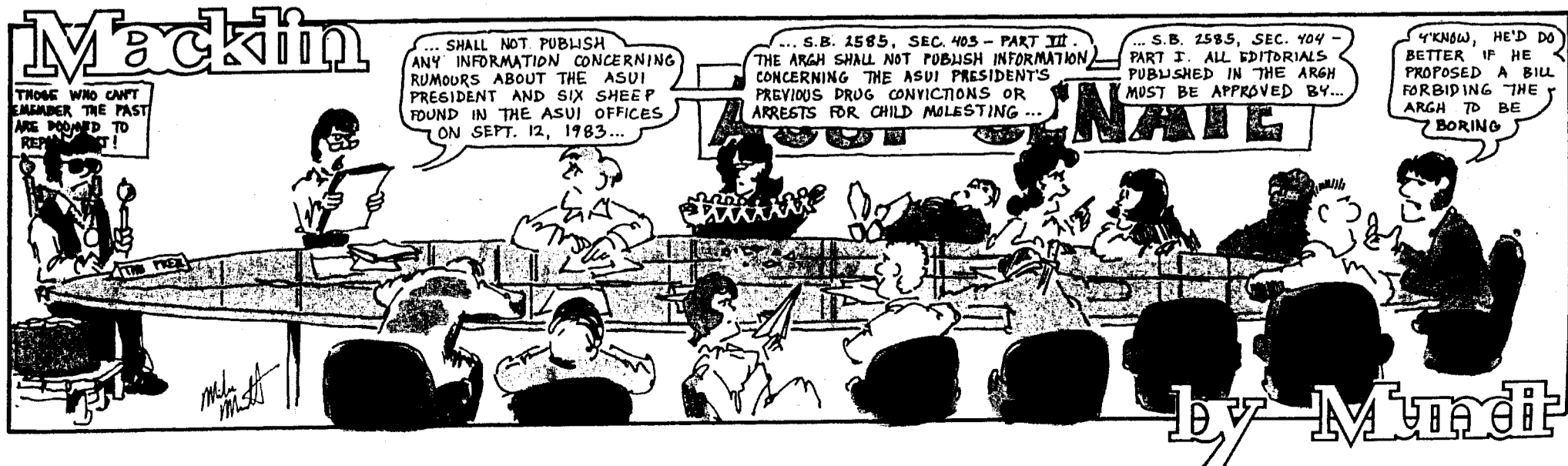
To top it off, Mr. Name Withheld, I checked in the *American Heritage Dictionary* and found the word "scam". That means that the word is *legalized* in all 50 states now. So, Mr. Name Withheld, put that in your pipe and smoke it!

Tim Deryan

... I am writing to the person who wrote the article "What's a scam?" Were you raised in a barn or something? I am appalled at the *vagrant* use of the four-letter word "scam." If you haven't realized it yet, the use of this word is a definite slur on the English language and by all rights is extremely crude. What are you trying to *scam* over on these people? The overuse of this word could seriously endanger the future of this country. Without control over this word we could have people using scam as a common, everyday word. How do we know it doesn't cause cancer? All mothers should realize this new danger to their kids in college. We could have mutated forms of humans walking the streets saying, "Scam scam scam" all the time.

I beg all the people who agree with this letter to unite and maybe with enough support, we can stop the spread of this new threat to our society and our beautiful campus.

G. Tanaka



Board seeks statewide plan

In the wake of its most recent meeting, the Idaho Board of Education is attempting to achieve a system of statewide university programs that will be beneficial to all of Idaho, said Linda Stalley, the chief academic officer of the board.

The Board met in Gooding on Thursday to discuss problems and solutions to various academic problems in schools throughout the state.

The board recommended that the staff appoint lead institutions in academic areas to plan and organize their strong disciplines for the other state universities, said Stalley.

The board identified the University of Idaho as the lead institution for engineering and international programs, Idaho State University for health science programs and Boise State University for social sciences and performing arts, she said.

"All money for a particular discipline will be funneled through the lead institution, if the recommendations of the board are adopted," Stalley said. The lead institution would be the chief administrator of the program and would develop long-range academic plans for the state, she said.

"The board feels that this is the

best way to build quality when you don't have much money," Stalley said. The proposed program would enhance quality, diversity and accessibility without duplicating strengths, she said.

Although the presidents of the four state universities agree that there should be defined strengths in particular institutions, they hope to find alternative means to the same ends, Stalley said. The presidents have been given until an Oct. 28 meeting to present a proposal for program reviews and role and mission statements, she said.

UW profs to discuss economic justice

The UI's Endowed Chair for Business Enterprise will hold a program Wednesday, Oct. 5 at 8 p.m. in the Agricultural Science Building Auditorium.

The subject of the program, "Economic Justice and the Market System," will be discussed by Paul Heyne, University of Washington professor of economics, and Robert Coburn, UW professor of philosophy.

According to Richard

Coffman, UI associate professor of business and chairman of the committee directing the Endowed Chair programs, the discussion will explore the meaning of economic justice, trade-offs between justice and economic efficiency and the question of when government intervention is necessary to secure economic justice in the marketplace.

The program is free and open to the public.

AUTHOR PARTY

with



Michael Morgenstern

Author of "How To Make Love To A Woman"

University of Idaho Bookstore

Wednesday, October 5 4:30 p.m. - Closing

Come and meet Michael Morgenstern and find out about the "Return to Romance."

Dozier-Bukvich Trio
with
Bob McCurdy, Trumpet

**"Jazz
Wed. Nights!"**

the garden lounge

hotel moscow

**THE PALOUSE EMPIRE'S
FINEST IN FLOWERS AND GIFTS
FOR ALL OCCASIONS**

- POSTERS
- INCENSE
- CORSAGES
- BOUQUETS
- CARDS
- CERAMICS
- NOVELTIES

LIBERAL DISCOUNTS ON GROUP ORDERS OF CORSAGES.

WORLDWIDE DELIVERY BY...

MOSCOW FLORISTS & GIFTS
Serving the Palouse Area for over 30 years
6th & MAIN, DOWNTOWN 882-2543

TURNTABLE WEEK

SAVE 13% TO 25% ON THESE POPULAR MODELS

HITACHI

HT-1 P-mount Turntable
This belt drive unit offers low mass tonearm, automatic shutoff, front panel controls, and convenient plug-in cartridge mounting.
reg. \$90 **\$77**

Dual 505 belt drive turntable

This German-made table offers belt drive, automatic shutoff, ultra-low mass arm, and a floating subchassis for excellent isolation.
reg. \$130 **\$109**

L55

HT-L55 linear - tracking turntable
In a package only slightly larger than a record, Hitachi offers direct-drive, fully automatic operation, and straight line tracking.
reg. \$240 **\$179**

THORENS

TD166 MKII turntable
From the oldest and most respected turntable manufacturer in the world, comes this modestly-priced unit. Belt drive, isolated subchassis, low mass plug-in arm, and the full five-year Thorens warranty.
reg. \$275 **\$239**

audio-technica **SHURE**

SAVE ON THESE POPULAR MODEL PHONO CARTRIDGES

Audio-Technica AT120E nude elliptical...90	39.95	Shure M72EJ elliptical.....65	27.00
P-mount version.....	42.95	Shure M95HE hyper-elliptical.....120	49.95
Audio-Technica AT125LC linear contact.130	49.95	* FREE MOUNTING INCLUDED *	
P-mount version.....	52.95	sorry-no coupons	

NW 104 Stadium Way
Pullman, Wa. 99163
(509)334-2887

OPTIMUM SOUND
Audio Components truly worth owning

MON - SAT
10:30 - 6:00

FREE Antifreeze
(to at least 40° below)

Winterizing Special!

- Flush cooling system
- Inspect all belts & hoses
- Check heater operation
- Blow out radiator fins

Master Card and Visa accepted

Reg. \$69.95
only \$36⁹⁵

QUALITY IS JOB 1

Moscow Proff Ford

1401 S. Blaine
Moscow, 882-6572

FORD MERCURY

ARGONAUT

Sports

Harrier women win at Whidbey Island

The Idaho women's cross country team won its second Fort Casey Invitational in three years in the largest cross country meet assembled in the United States this year. A total of 187 runners and 29 teams toed the starting line in the three mile race.

Along with the victory, the Vandals suffered a serious blow to their chances of winning a second consecutive Mountain West Athletic Conference title. Sophomore Pam Paudler, who was one of the top runners on the team last year before suffering a year-long hip injury, reinjured her hip and will probably be sidelined for the remainder of the season.

Patsy Sharples was Idaho's first finisher, as she placed third with a time 16.46.2. Followed closely behind Sharples again was Sherrie Crang placing fourth with a time of 16.48.4.

Other Vandal finishers were: Janet Beaudry, 11th 17.42.6; Lisa Tylor, 20th 18.00; and Paudler 51st, 18.32.

Head coach Roger Norris has indicated that sophomore Karen Voss will redshirt this season following a three week illness. She was a member of last year's

championship team.

Idaho will travel to Palo Alto, Calif., this weekend to partake in the Stanford Invitational. There, the Vandals will face three teams rated in the top ten in the nation.

In their best performance in three years, the Idaho men's team placed eighth in the 10,000 meter race at Whidbey Island.

The performance was a vast improvement over last year's last place showing.

Leading the Idaho harriers was junior Andy Harvey. He finished in 11th place with a time of 30.22.6. It was last year at the same meet where Harvey suffered a painful calf injury.

Freshman Tony Therault turned in another strong performance by placing 14th overall with a 30.47.3 clocking.

Other Vandal finishers were: Mike Rousseau, 60th 32.04; Chris Williams, 61st 32.05; and Jim McKean, 65th 32.07.9.

The overall winner was Marty Beauchamp with a time of 29.45.9.

The Vandals will travel to Spokane this Saturday to participate in the Coca Cola Invitational.



Photo by Scott Spiker

Reserve outside linebacker Dan Hunter crunches Eastern Washington quarterback Steve White during the Vandals' 38-24 victory over the Eagles Saturday. Hunter is a junior college transfer from Idaho Falls.

'Air Express' goes overland to trip Eastern Washington

By Frank Hill
of the Argonaut

The Vandal air force has finally developed some ground support. For the first time this season the running game played an integral part in a victory as the University of Idaho football team beat Eastern Washington University, 38-24.

It was the Vandals' third victory of the season, and got them back on track, coming on the heels of their only defeat—a Big Sky Conference upset loss last weekend to Idaho State.

A more balanced offensive attack was the key to the victory, according to Head Coach Dennis Erickson. "Our running game slowed their pass rush down," he said. "Running the football softened them up defensively. It made them quit blitzing."

Erickson indicated prior to the game that the Vandals would rely on the running game against EWU to a greater extent than in previous games. His faith was well-founded because the UI ground attack accounted for over a third of the Vandal's total offense. In all, the Vandals picked up 215 yards on 41 carries, utilizing seven different ball carriers.

Leading the Vandal rushers was senior tailback Kerry Hickey with nine carries for 77 yards. Marlon Barrow ran four times for 34 yards, Andrew Smith 7-32, Doug Hall 5-28, and Mike Shill 6-9. Quarterback Ken Hobart carried the ball eight times for 32 yards and wide receiver Brian Allen got into the act, gaining three yards on a flanker reverse play.

"We came out tough and ran the ball well," Hobart said. "If we run again like we did tonight, we've definitely got a shot at the Big Sky title."

As Erickson said, the Vandal's increased reliance on the rush helped out their passing attack. Hobart's completed 18 of 31 passing attempts for 332 yards, tying him for the Big Sky career completion record. He now has a total of 465 completions, equaling the record set by Northern Arizona's Scott Lindquist.

31 attempts were half the number Hobart threw against ISU one week earlier. "Not throwing 40 to 50 times a game keeps the linebackers honest and helps me out," said Hobart. "After the ISU game I thought I was going to die."

Erickson was also relieved that his quarterback didn't have to throw that much. "Hobart's more relaxed when he's not throwing as much. When I don't screw him up he plays pretty well," he said.

Against EWU, Hobart had basically two targets: wide receivers Brian Allen and Ron Whittenburg. The two senior receivers coralled 11 of Hobart's 18 passes, their receptions coming on basically the same pattern all night long.

Allen's four receptions for 153 yards and three touchdowns came usually in the form of deep post patterns, two that weren't called in the huddle; after the game, Erickson said that on two of the scoring strikes, Hobart audibilled the play on the line of scrimmage. For his performance, Allen was named BSC Player of the Week.

As for Whittenburg, the EWU

defense was also not able to keep the UI receiver from finding the open seam in the center of the field. On all but one of his seven catches (135 yards and one TD), Whittenburg was open on slant patterns over the middle.

The key to the Vandal's offensive success, however, lied in the trenches. "The offensive line played extremely well," Erickson said. "They pass blocked pretty well and just played excellent."

On the other side of line, Erickson said he was impressed with the defensive effort. "Defensively we gave up two big plays but other than that we played pretty well," he said.

Defensive tackle John Andrews made life miserable for the Eagles, as he sacked EWU quarterback Steve White three times for minus 19 yards. Sam Manoa and Darby Lewis also nailed White for nine- and eight-yard losses respectively.

The leading Vandal tacklers were freshman safety Mark Tidd with 10, and linebackers Ed Rifilato and John Crout with nine apiece. Crout, filling in for injured freshman linebacker Tom Hennessey, "came in and played well," Erickson said.

As for the special teams, Hobart was not called on to do the punting for the first time this season. Instead, freshman wide receiver Darin Magnusson drew the call from Erickson and responded admirably, booting eight punts for 288 yards and a 36-yard average.

"Magnusson is going to be our punter," Erickson said. "He's

See Football, page 10

Vandals fall to BSU, host Eagles tonight

BOISE — The University of Idaho volleyball team dropped another Mountain West Athletic Conference match last Saturday as the female spikers were beaten by the Boise State Broncos in four games — 15-9, 15-12, 4-15, 15-12.

"We did very poorly," UI volleyball coach Amanda Gammage said. "They were very disappointing losses ... because we were ahead in all of the games."

The loss drops the Vandals' season record to 16-8 and 0-2 in MWAC games.

"Against Portland State we fought hard and lost, but I'm disgusted with our play against Boise to say the least," Gammage said.

One possible reason for the Vandals' poor showing was the travel schedule. "The travel hurt us a little bit," Gammage said. "We spent 13 hours on the road riding between Portland and Boise."

The one bright spot of the trip was the play of Jenny Frazier. Nominated for MWAC Player of the Week, Gammage said, "She played real well during both matches."

The Vandal spikers return home tonight to face the Eastern Washington Eagles.

The Eagles, like the Vandals, are 0-2 in MWAC games and both losses came at the hands of PSU and BSU. "When we were in Portland," Gammage said, "Eastern was playing Boise; they were on the same road trip as we were."

The Vandals defeated EWU earlier this season at the Northwest Classic Volleyball Tournament held at the UI. "They're a much improved team over last year, so this should be a tough match," Gammage said.

Gammage indicated the Vandals would "change some things offensively" against EWU. "It would be very easy to end up in the cellar," she said. "There are a lot of good teams in the MWAC and we can't afford to lose a home game."

The EWU game marks the beginning of a four-game home stand for the Vandals. On Wednesday, Oct. 5 the Vandals host Lewis-Clark State College in a non-conference match. And on Friday, Oct. 7, the Vandals battle MWAC opponent Montana State and on Saturday face Montana. MSU's conference record is 1-1 and Montana is 2-0 in league play.

Morris wins TS contest

Mary Morris, of RFD 01 Box 21 Desmet, Idaho, was this week's winner in the Tri-State/Argonaut Pick the Winners contest.

Morris missed two games out of the possible 18. The games she missed were Florida defeating Louisiana State and South Carolina upsetting Southern California. Two games,

Arizona at California and Michigan State at Purdue, were thrown out because both contests ended in ties.

Three other entrants missed two games, but Morris won on the tie-breaker. She picked Idaho to win by 17 points (they won by 14) and Washington to win by 13 points. The Huskies defeated Navy, 27-10.

FABRIC and DECORATING SAVINGS

FUR
4⁹⁸ yd. & up

DRAPERY
\$1⁴⁹ yd. & up

45" Cotton Denim
 Reg. 3⁹⁸ **1⁹⁸** yd

Designer Cuts by Peter Pan®
 Reg. 4⁹⁸ **1⁹⁸** *

ASST. FABRIC
79¢ yd. & up

Wool & Wool Blends
 to **3⁹⁸** yd & up
*Sale Prices thru Oct. 8

DOROTHY'S
 Located on TRI-STATE'S MEZZANINE
 882-1231

FABRIC LOFT
 Monday-Saturday

TRI-STATE

IDAHO'S MOST INTERESTING STORE

ARGONAUT

Pick the Winners Contest

Win a \$25 Tri-State gift certificate

Name _____
 Address _____
 City _____ State _____
 ZIP _____
 UI I.D. # _____
 Phone # _____

VISITOR	HOME
<input type="checkbox"/> Air Force	<input type="checkbox"/> Navy
<input type="checkbox"/> Alabama	<input type="checkbox"/> Penn St.
<input type="checkbox"/> Auburn	<input type="checkbox"/> Kentucky
<input type="checkbox"/> Virginia	<input type="checkbox"/> Clemson
<input type="checkbox"/> Vanderbilt	<input type="checkbox"/> Florida
<input type="checkbox"/> Florida St.	<input type="checkbox"/> Pittsburgh
<input type="checkbox"/> Michigan	<input type="checkbox"/> Michigan St.
<input type="checkbox"/> Montana St.	<input type="checkbox"/> Idaho St.
<input type="checkbox"/> Weber St.	<input type="checkbox"/> Montana
<input type="checkbox"/> Purdue	<input type="checkbox"/> Ohio St.
<input type="checkbox"/> UCLA	<input type="checkbox"/> Stanford
<input type="checkbox"/> Oklahoma	<input type="checkbox"/> Texas
<input type="checkbox"/> Rutgers	<input type="checkbox"/> Army
<input type="checkbox"/> Notre Dame	<input type="checkbox"/> South Carolina
<input type="checkbox"/> Kansas	<input type="checkbox"/> Iowa St.
<input type="checkbox"/> LSU	<input type="checkbox"/> Tennessee
<input type="checkbox"/> Fullerton St.	<input type="checkbox"/> Nevada-Reno
<input type="checkbox"/> Baylor	<input type="checkbox"/> SMU

Tie Breakers
(fill in only one blank for each game)

Idaho to win by _____ or Portland St. to win by _____
 Washington St. to win by _____ or USC to win by _____

Mail to Argonaut Football Forecast, Student Union Building, University of Idaho, Moscow, ID, 83843, or deliver in person to the Argonaut offices in the basement of the SUB or to Tri-State, located on the Pullman Highway in Moscow.

Rules:

1. Contest is open to all University of Idaho students, faculty and staff. Argonaut mail subscribers are also eligible.
2. Contestants may submit only one forecast form each week.
3. Forms must be filled out completely and correctly.
4. The entry deadline is noon on Friday before the games. The Argonaut is not responsible for entries lost in the mail or delayed.
5. Tie games cancel out.

Moscow Roadrunners race set for Oct. 22

The first annual Moscow Roadrunners Fall Classic 10,000 meter run will be held on Saturday, Oct. 22, beginning at the Moscow Mall parking lot at 9 a.m.

All proceeds from the event will be donated to Special Olympics. Entry fee will be \$7 if registered before Oct. 8 and \$2 for a no T-shirt option. If pre-registered, runners may pick up

their race packets at Pizza Hut from 7-8:45 a.m. on the morning of the race. Late registers may also sign up at the time.

The race starts at Pizza Hut restaurant at the Moscow Mall parking lot and ends at Lions Park across the street from Pizza Hut. The course is relatively flat with one major hill.

There will be team competition. There is no upper limit on the number of runners per team, but each team must have at least five runners. The first five runners across the finish line for each team will be scored. Places will be summed and the lowest score wins.

Sponsors for the Classic are Pizza Hut, Pepsi, Moscow Roadrunners, Moscow Mall, and KRPL.

Signature of applicant _____

Signature of parent or guardian if under 18 _____

Last name _____ First name _____ MI _____

Address _____ City _____ State _____ Zip _____

Age on race day _____ Sex _____ (T-shirt size) Sm 34-36 Med-38-40 Large 42-44 X-Large 46-48 (circle one)

Are you competing on a team? Yes No (circle one)

If yes, name of team _____

Team category: Male Female (circle)

Please enter me in the Fall Classic Fun Run on Saturday, October 22, 1983

In consideration of the acceptance of my entry in the Fall Classic Fun Run, I the undersigned participant and, if under 18 years of age, my parent or guardian, intending to be legally bound, do hereby for ourselves, and heirs, executors, administrators and assigns, forever waive, release, and discharge any and all rights, claims and actions for damages that we or any of us may have, or that may hereafter accrue to us or any of us, against any and all persons, organizations and entities associated with the Fall Classic Fun Run and all sponsors of the Fall Classic Fun Run, the city of Moscow, the county of Latah, the state of Idaho, or any political subdivisions thereof and individual race organizers, and their respective officers, directors, employees, agents, representatives, successors and assigns, arising out of or in connection with my entry in, travel to, participation in, and returning from the Fall Classic Fun Run.

I attest and verify that I am physically fit and sufficiently trained to participate in this event. I also give permission for the free use of my name and/or pictures in broadcasts, telecasts, newspapers, etc.

DIVISIONS FOR THE RUN

- | | |
|---|---|
| MALE
<input type="checkbox"/> Wheelchair
<input type="checkbox"/> 14 and under
<input type="checkbox"/> 15-19
<input type="checkbox"/> 20-29
<input type="checkbox"/> 30-39
<input type="checkbox"/> 40-49
<input type="checkbox"/> 50+ | FEMALE
<input type="checkbox"/> Wheelchair
<input type="checkbox"/> 14 and under
<input type="checkbox"/> 15-19
<input type="checkbox"/> 20-29
<input type="checkbox"/> 30-39
<input type="checkbox"/> 40-49
<input type="checkbox"/> 50+ |
|---|---|



\$2.00 OFF ANY LARGE PAN PIZZA
OR \$1.00 OFF ANY MEDIUM PAN PIZZA
 valid to December 1, 1983

One coupon per party per visit at participating Pizza Hut® restaurants.



Please present coupon when ordering. This offer not valid in combination with any other Pizza Hut® offer. 1/20 cent cash redemption value.

©1983 Pizza Hut, Inc.

\$2.00 OFF ANY LARGE PAN PIZZA
OR \$1.00 OFF ANY MEDIUM PAN PIZZA
 valid to December 1, 1983

One coupon per party per visit at participating Pizza Hut® restaurants.



Please present coupon when ordering. This offer not valid in combination with any other Pizza Hut® offer. 1/20 cent cash redemption value.

©1983 Pizza Hut, Inc.

The Argonaut
All the news that fits

The Old Post Office Theater
 ** NOW SHOWING **

CLIP THIS COUPON!
 2 for 1
"CLASS"
 Jacqueline Bisset
 Rated R
 SHOWS 7 & 9
 Coupon good Tues. only

Adm. \$3 Adults \$2 Children under 12

MIDNIGHT MOVIE
DEEP THROAT
 Shows Fri-Sat
 Admission \$4

245 S.E. Paradise
 Pullman, Wash.
 Call 334-FILM

Rugby news

Blues destroy WSU rugger clubs

Blue Mountain Rugby Club easily defeated the Washington State Rugger Saturday in Pullman by a score of 44-0. With the victory, Blue evens its record to 3-3.

Blue did little tactical kicking and was always attacking with good backline movement. Blue backs scored eight tries and the scrum scored one.

Contributing tries for Blue were Bochius, Fred Thomas, Jim Ford, Lance "Scoop" Levy, Bill Stormont and John Walther, while Levy and Captain Deeder Petersen added conversion kicks.

Lentils beat WSU, Missoula

The Dusty Lentils had a successful weekend as they easily defeated Washington State and Missoula, 16-0 and 6-0,

respectively.

In the first half, two tries were made by Penny Rice and Danielle Cherry. In the second half, the Lentil scrum burst over the line for a third try. Janis Jackson's two well-kicked conversions put the match out of reach.

The second game proved less exciting because both teams showed signs of fatigue. However, the Lentils dominated both the defense and offense.

Intramural corner

Managers Meeting (men) — You must attend tonight's meeting at 7 p.m. in Room 400 Memorial Gym to sign up a volleyball or bowling team. Volleyball games will be played on Monday-Thursday evenings and bowling matches will begin at 4:30 p.m. Bowling teams consist of five men.

Co-Rec Racquetball — Entries are due today in the IM Office. All matches will be played in the ASUI Kibbie Dome on Monday-Thursday evenings.

Turkey Trot (men & women) — Entries open today. The run will be held on Oct. 15. You must register by Oct. 14 in the IM Office. There will be no registration on the morning of the run.

Ultimate Frisbee — Entries open today and are due on Tuesday, Oct. 11. Games will be played in the Dome.

Managers Meeting (women) — The meeting is scheduled for this Wednesday, at 7 p.m. in Room 201 PEB.

COUPON

(We honor ALL 2 for 1 coupons of this type)

2 FOR 1

Good thru 10-11-83

pitchers of your choice at regular price of \$3.00

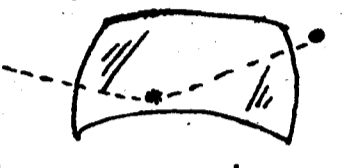
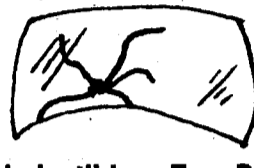
Don't forget our FREE delivery

882-4633 215 N. MAIN, Moscow also Pullman and Lewiston

RAIHANU PIZZA

THE WINDSHIELD DOCTOR

Repair it Now ... Or Replace it Later ...

Insurance companies are waiving deductibles - Free Repairs

Mobile Service 882-8099 100% Guaranteed!


The **BRAUN BROTHERS**

Friday and Saturday

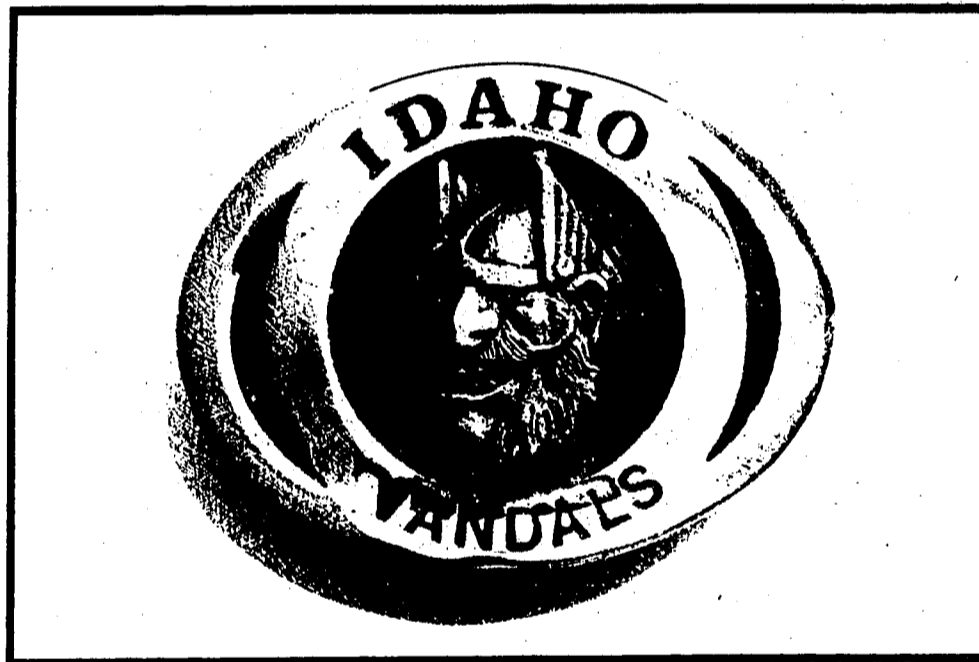
October 7th & 8th

Moscow Moose Lodge

9 PM - 1 AM



A salute to University of Idaho Vandals from First Security Bank



Collect a piece of Idaho pride!

Now, for a limited time when you open a savings, checking or certificate account with qualifying amounts, or add to an existing savings or certificate account with qualifying amounts at First Security Bank, you will receive free, or at a special price*, your choice of these exclusive collegiate buckles from The New Idaho Buckle Collection. These solid brass**, expertly handcrafted buckles depict emblems from Idaho colleges and universities. These collector items are hand cast from sand molds and carefully hand finished. Each comes in a suede leather pouch with individual serial number and registration certificate.

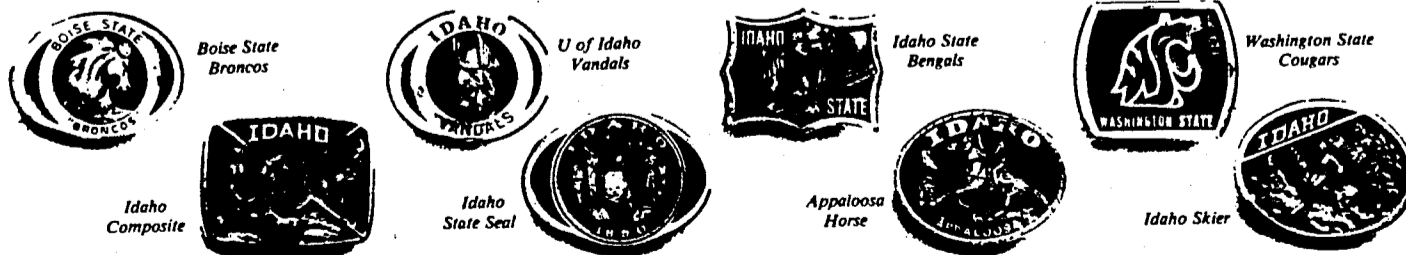
For details on how to get your collegiate or other handsome Idaho buckle, just visit any First Security Bank office.

	\$5,000-\$24,999 Deposit	\$25,000 or More Deposit	\$500-\$4,999 Deposit	No Deposit
Any Buckle	FREE	2 FREE	\$7.95	\$12.95

*Free buckle only with qualifying deposit. Consult chart for details. Offer limited to individual accounts while supplies last. Supplies are limited and exclusive to First Security Bank.

**Silver buckles and buckle plaques available by special order at the new accounts desk. Other designs not shown here are also available. Sales tax will be added to all buckle purchases. Substantial penalty for early withdrawal on certificate accounts.

To Idaho, with Pride: The New Idaho Buckle Collection, only at First Security Bank.



First Security Bank

OF IDAHO, N.A.

Member FDIC

Pride you can bank on.

Football

From page 7

going to get better every week." While Magnusson, himself, was disappointed with his performance, he agreed with Erickson's optimism. "My punting was not as well as I could have done," he said, "but I'll do better next week."

Perhaps the most bizarre play of the evening was the phantom catch by Kurt Vestman late in the fourth quarter. With the Vandals driving and the ball resting on the Idaho 43, Hobart dropped back to pass and hit Vestman over the middle for what looked like a one-yard gain.

The ball, however, popped loose and EWU recovered the ball at the UI 46. Apparently the referees had ruled the play dead, but instead of giving the ball to the Vandals at the point of the

reception, the 44, the Vandals retained possession where EWU recovered the fumble, the 46.

Vestman later admitted, "It was a good defensive play. I didn't catch it." Perhaps this play, more than any other, typified the evening for EWU; no matter what they did, nothing worked.

Trott wins NROTC run

John Trott, former University of Idaho middle distance star, was the winner of Saturday's NROTC "Go to Health" fun run in Moscow.

Trott covered the eight-mile run in 41.17, averaging 5.15 minutes per mile. He was pushed for most of the race by former teammate Mark Rogers who finished a close second with a time of 41.54.

A total of 72 runners finished the race in perfect running conditions.

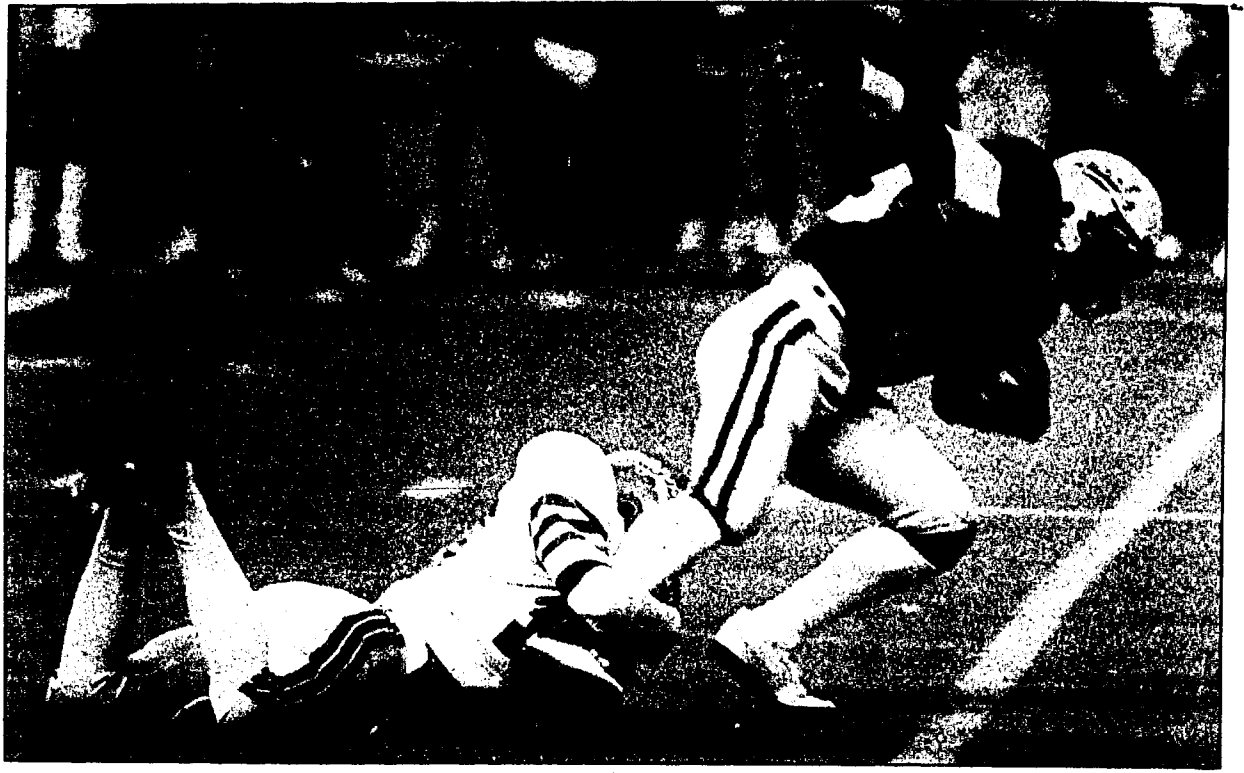


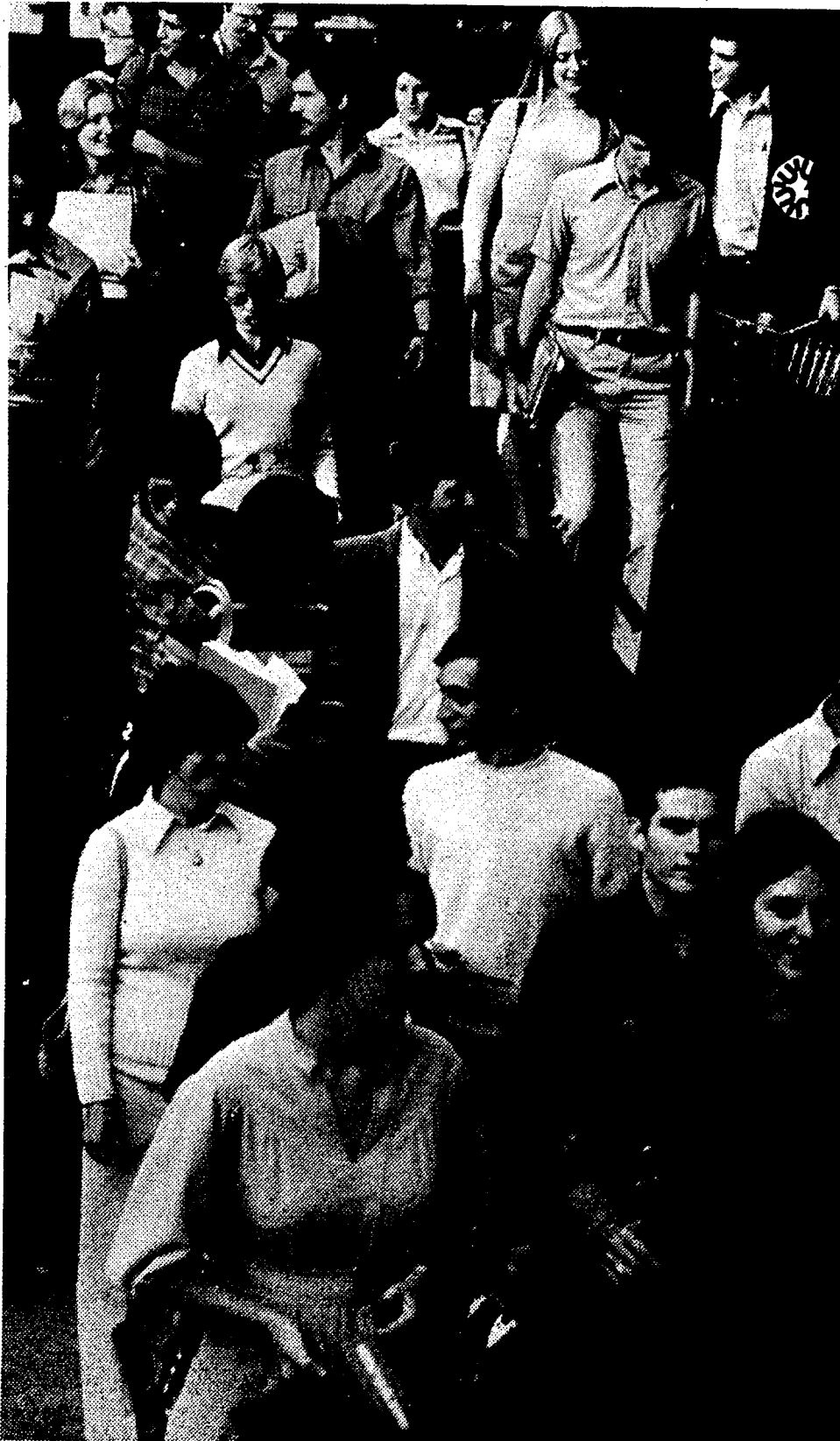
Photo by Scott Spiker

Tailback Kerry Hickey attempts to break away from the grasp of an Eastern Washington defender during Saturday's UI-EWU contest. Hickey had his finest day rushing this season when he gained 77 yards on nine carries.



REMEMBER!
Copies **5¢**
Binding
Passport Photos
kinko's copies
Open Weekends Evenings
1000 Colo. St., Pullman
608 S. Main 882-3066

6,000 WAYS WE HELP STUDENTS GO TO COLLEGE.



Army ROTC has more than 6,000 four-, three-, and two-year scholarships in effect at any given time. And, each year, hundreds are available for which you can compete.

Scholarships cover tuition, books, and lab fees, and pay you a living allowance of up to \$1,000 for each academic year the scholarships are in effect.

Our four-year scholarships may be used at 280 colleges and universities across the country. Three- and two-year scholarships may be used at more than 600 additional institutions. Schools where you can earn both a commission and a college degree.

So if you'd like to see yourself headed for college, let Army ROTC show you the way.

**ARMY ROTC.
LEARN WHAT
IT TAKES TO LEAD.**

For more information, contact Army ROTC in the Memorial Gym or call 885-6528

**Apply Now For
2 yr. and 3 yr.
Scholarships**

AKERS HAS IT:
50% OFF
Closeout
Clearance Items!
DOMESTICS:
•gifts •towels
•baskets •blankets
•silk flowers •sheets
ALSO: SUMMER
Clearance Items!
moscow mall
THE EASTSIDE MALL

UNIVERSITY 4 THEATRE
Palouse Empire Mall
Movie Info 882-9800

Shows 5:15, 7:15 and 9:15

JAWS 3-D ALL NEW
A UNIVERSAL PICTURE

Starts 5:00
7:00, 9:00

All The Right Moves
TWENTIETH CENTURY-FOX

Showing 7:30 and 9:30
Earlybird Discount 5:30

Jack's going to have to soon from the bottom up. 20th CENTURY-FOX FILMS

Starting 5:45, 7:45, 9:45

There's a time for playing it safe and a time for...
Risky Business

Henrikson finds counseling comes naturally

By Laurel Darrow
of the Argonaut

Clare Henrikson, a senior psychology major from Annandale, Va., chose psychology as her major because she likes working with people. "Psychology is a people career. I've always been interested in working with people," she said.

Since entering the University of Idaho in 1980, Henrikson has achieved a 3.8 grade point average and has received several honors related to her academic performance. She is a member of the Phi Kappa Phi Honor Society and recently received a Harry Truman Scholarship, which is awarded to 50 students in the United States each year.

Henrikson has also done campus and community volunteer work.

At the UI Women's Center, she counseled women who were having problems related to

personal relationships or school. Her work there interested her in counseling victims of domestic violence, she said.

She began working as an advocate for Alternatives to Violence in 1980. Her job involves counseling victims of rape and wife abuse, and she said that she makes her clients aware of alternatives to their situations. "When women are in a domestic violence situation, they lose self-respect and feel helpless," Henrikson said. "I help them see that they can lead useful lives."

Henrikson also enjoys working with the elderly. Living with her grandmother for a year and a half and working with patients at Good Samaritan Nursing Home introduced her to the problems and needs of elderly persons.

"The elderly have a definite need for services," she said. She wants to work on programs that will keep the elderly out of nursing homes, she said, adding

that most elderly people are capable of living alone if they have some assistance.

She said that after graduating in May, she plans to work towards a master's degree and then pursue a career in clinical psychology.

Henrikson said that her success in school is largely due to the support of her parents. "They encouraged me to learn new things," she said.



Clare Henrikson

**Come and
get your
49¢ tacos
every Tuesday**

520 W.
Third
882-1151

**TACO
JOHN'S**

It's Taco Time!

ASUI PROGRAMS PRESENTS *ISSUES & FORUMS*

1983-84

A Series of Outstanding Speakers and Fascinating Topics

**"ATTITUDES
ARE THE REAL
DISABILITY"**

with Henry Holden
Actor - Comedian -
Activist



Henry Holden has appeared in "Rocky II" and "Poltergeist", has opened in night clubs for Bill Cosby and George Benson, and has twice been profiled on TV's "Real People". He is also an activist for the rights of the handicapped, having contracted polio himself a child.

**Monday, October 10, 2:30pm,
UofI Student Union Ballroom Free**

S.U.B. FILMS

"It'll lift you up where you belong?"

**AN OFFICER
AND A
GENTLEMAN**

Showing at:
7:00
and 9:00

FRIDAYS - BORAH THEATRE - \$2⁰⁰

**Cold
WEATHER
Is Here!**

and so is cold weather clothing at
NORTHWESTERN MOUNTAIN SPORTS

- Wool Gloves
- Cotton Turtlenecks
- Long Underwear

- Wool Sweaters & socks
- Nylon Rain Jackets
- Ski Coats

HURRY IN WHILE THE SELECTION IS BEST!

NOW OPEN SUNDAYS!
10 - 5:30 MON - SAT
NOON - 5 SUNDAY

Northwestern Mountain Sports
"the outdoor recreation specialists"

410 W. 3rd, Moscow
882-0133

Campus calendar

Tuesday, Oct. 4

—8 a.m.-5 p.m. Cooperative Extension, SUB-Silver Room.
 —8:30-9:30 a.m. Facilities Use, SUB-Ee-da-ho Room.
 —9-10 a.m. Campus Crusade, SUB-Pend Oreille Room.
 —11:30 a.m.-12:30 p.m. Christian Series, SUB-Ea-da-ho Room.
 —12:30 p.m. "Food: Secret Pleasures, Hidden Dangers," Women's Center.
 —3:30-5:30 p.m. CAD, SUB-Ee-da-ho Room.
 —4 p.m. Organizational meeting for All Women's Chorus, Women's Center.
 —4-5 p.m. Radiation Safety, SUB-Chief's Room.
 —4-5 p.m. Chemical Engineering, SUB-Appaloosa Room.
 —4:30-5:30 p.m. Computer Science, SUB-Pend Oreille Room.
 —4:30 p.m. Communications Board,


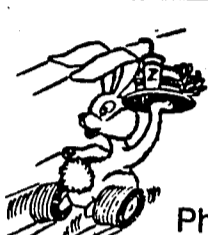
SUB-Gold Room.
 —5-6 p.m. IK's, SUB-Appaloosa Room.
 —5:30-8 p.m. Greek class, SUB-Pend Oreille Room.
 —6:15-8:15 p.m. Delta Chi, SUB-Silver Room.
 —6:30-8:30 p.m. KKG, SUB-Pow Wow Room.
 —6:30-9:30 p.m. SNEA, SUB-Appaloosa Room.
 —7-8:30 p.m. SPURS, SUB-Gold Room.
 —7-9 p.m. English Conversation Group, SUB-Ee-da-ho Room.
 —7-10 p.m. Pre-retirement workshop, SUB-Borah Room.
 —7-10 p.m. Believer's Fellowship, SUB-Cataldo Room.
 —7-10 p.m. Believer's Fellowship, SUB-Spalding Room.
 —7:30-10 p.m. Pre-Session, SUB-Chief's Room.
 —8:30-9:30 p.m. Recreation Club, SUB-Silver Room.

—9:15-10:30 p.m. Delta Sigma Phi Pledge Class, SUB-Ee-da-ho Room.
Wednesday, Oct. 5
 —8-9 p.m. Commencement Comm., SUB-Ee-da-ho Room.
 —8 a.m.-5 p.m. Cooperative Extension, SUB-Silver Room.
 —9-10 a.m. Campus Crusade, SUB-Pend Oreille Room.
 —11:30 a.m.-12:30 p.m. Christian Series, SUB-Ee-da-ho Room.
 —1-3 p.m. Cooperative Extension, SUB-Appaloosa Room.
 —1-3 p.m. Cooperative Extension, SUB-Pend Oreille Room.
 —1-3 p.m. Cooperative Extension, SUB-Ee-da-ho Room.
 —1:30-3:30 p.m. Univ. Comm. for Gen. Educ., SUB-Chief's Room.
 —2:30-3:30 p.m. SCHVP, SUB-Pow Wow Room.
 —4 p.m. The German "Kaffeekatsch," Ad. Bldg. 316.
 —4-5 p.m. Radiation Safety, SUB-Ee-da-ho Room.
 —4-5 p.m. President's Office, SUB-Chief's Room.
 —4:30 p.m. Native American Student's Association, Campus Christian Center.

—4:30-8:30 p.m. SUB Board, SUB-Pend Oreille Room.
 —6:30-8:30 p.m. Math 50, SUB-Pend Oreille Room.
 —6:30-8:30 p.m. KKG, SUB-Cataldo Room.
 —7 p.m. Finance Club Initiation, Wallace Complex.
 —7-9 p.m. Accounting Club, SUB-Spalding Room.
 —7-10 p.m. Special Olympics, SUB-Borah Room.
 —7-10:30 p.m. ATV, SUB-Silver Room.
 —7-9 p.m. IVCF, SUB-Ee-da-ho Room.
 —7-9 p.m. Moscow NOW, SUB-Appaloosa Room.
 —7-9 p.m. Believers Fellowship, SUB-Gold Room.
 —7:30 p.m. National Org. for Women, SUB-Appaloosa Room.
 —7:30 p.m. Campus Christian Center, Moscow Community Center.
 —7:30-11 p.m. Issues and Forums, SUB-Ballroom.
 —8:35-10 p.m. Campus Crusade, SUB-Pend Oreille Room.
Thursday, Oct. 6
 —8 a.m.-5 p.m. Real Estate Ess. Class,

SUB-Pend Oreille Room.
 —8-9 a.m. Moscow Realty, SUB-Ee-da-ho Room.
 —9-10 a.m. Campus Crusade, SUB-Ee-da-ho Room.
 —10 a.m.-noon Tillage Conference, SUB-Chief's Room.
 —11:30 a.m.-12:30 p.m. Christian Series, SUB-Ee-da-ho Room.
 —2:30-4:30 p.m. Disc. Group, SUB-Ee-da-ho Room.
 —2:30-5 p.m. Radiation Safety, SUB-Chief's Room.
 —3:30-5:30 p.m. Fine Arts, SUB-Silver Room.
 —4-5 p.m. Chemical Engineering, SUB-Appaloosa Room.
 —4:30 p.m. Native American Student Association, Campus Christian Center.
 —6:30-8:30 p.m. Study Skills Workshop, SUB-Appaloosa Room.
 —6:30-8:30 p.m. KKG, SUB-Silver Room.
 —6:30-8:30 p.m. Air Force ROTC, SUB-Ballroom.
 —6:30-9 p.m. Mother of Twins, SUB-Cataldo Room.
 —6:30-8:30 p.m. Activity Fund Board, SUB-Pow Wow Room.

This week's special:
DbL Cheese Burger \$1.25

Phone Orders Welcome
 1222 Pullman Rd., Moscow, 883-0678

Continue the fight for equal rights for women . . . join the **National Organization for Women**

NEW MEMBERS MEETING
 Wed. October 5th 7:30 p.m. UI SUB
 sponsored by Moscow NOW
 P.O. Box 8763 Moscow, ID 83843

Precision Engraving Co.
TROPHY SHOP
 Engraved signs
 - trophies -
 - plaques -
 OPEN - noon-6 daily
 or
 Call 882-4384
 408 S Main, Moscow

ASUI PROGRAMS PRESENTS
ISSUES & FORUMS

1983-84

A Series of Outstanding Speakers and Fascinating Topics



" A RETURN TO ROMANCE "

with Michael Morgenstern

Lawyer, Author of *How To Make Love To A Woman*

"If you ask a hundred women what they want from sex in the '80s, ninety-nine will tell you they want a return to romance, a return to wooing and courtship, a return to traditional sex roles and the warmth and intimacy that these can bring."

Wednesday, October 5, 7:30pm,
UofI Student Union Ballroom \$1.50

Tickets Available At The SUB Info Desk And At The Door

COUPON
IT'S PIZZA TIME!
\$2 OFF LARGE PIZZA
\$1 OFF MEDIUM PIZZA
 of your choice

good thru 10-9-83

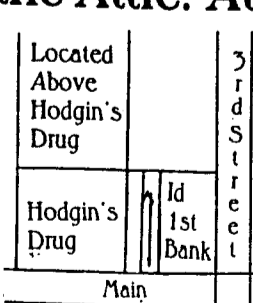
•Don't forget our FREE delivery!
 882-4633 •we honor all coupons of this type
 215 N. Main also Pullman & Lewiston



THE ATTIC
 MOSCOW'S COMIC SPECIALTY SHOP
 PRESENTS
STEVE GALLACCI
 Popular Northwest Comics and SF Artist

Steve will be at the Attic Wednesday from 11:00 - 6:00 to talk about his new book, *Albedo*. He will also sign autographs and do commissioned artwork.

Catch a new artist on the rise by stopping tomorrow at the Attic. At the corner of 3rd and Main streets. Just go up the Idaho First Bank escalator and turn to the left.



Above 307 S. Main, Moscow, Id 882-7170

"What's an Argonaut?"

Governor's office picks political interns

A representative from Gov. John Evans' office visited the University of Idaho campus Monday to recruit political science interns.

Merle Parsley, special assistant to the governor, said he is looking for students who are dependable and who have good judgment to be the "eyes and ears" of the governor's office.

John Andreason, legislative fiscal officer, will be here to recruit interns for the Idaho Legislature's Joint Finance and Appropriations Committee on

Wednesday at 9:30 a.m. in the Administration Building, room 306.

Students who accept internships attend committee meetings and general legislative sessions in Boise, track down specific bills of special interest to the governor and provide a channel of communication between Evans' office and legislators.

Though students are not paid for the work, they do receive nine upper-division political science credits for the work. The internship lasts nine weeks; in-

terns hired now would work during the 47th session of the Idaho Legislature beginning in January and continuing through March.

Interns are responsible for providing their own housing during the session.

According to Parsley, the governor's office makes an action list of bills in which it has a special interest, and the interns' responsibility is to keep the office informed on these bills.

Speaking with Parsley in an American State Government class were three former interns,

Russell Gee, John Braere and Kim Lannen.

Gee, who served two terms as an intern, said that the experience was an invaluable one.

"It was a lot of grunt work, but it was interesting," he said. "I didn't have to make coffee the whole time I was there. It wasn't that type of a job."

He was especially interested in the "bare-bones politics" that often take place in party caucus meetings, where many decisions are made as the result of frank discussions.

"It's a lot different from what they say it is in the books."

Gee flew to Moscow with Evans last year when the governor visited Phillip Habib, special envoy to the Middle East.

Lannen, whose father is a legislator, stayed in the Boise State University dorms while she was in Boise and paid a rate of \$3 per night.

Parsley will be hiring three to four interns. Interested students should contact Sydney Duncombe in room 304 of the Administration Building.



Hunter's Candy
Caramel Apples & Halloween Candy
Serving Moscow With Homemade Candies For Over 55 Years
123 East 3rd 882-4215



Mr. Bitts
10 Games for \$1.00
or
24 Games for \$2.00
Now Open 24 Hrs!
AD 90's only \$2.50
(coupon expires Tues 10/11/83)
610 S. MAIN (across from the Billiard Den)



Pelican Pete & TOUCAN SAM'S
FINE FOOD & SPIRITS

The Infamous
"WHEEL OF FORTUNE"
Spins every Wednesday night beginning at 10 p.m.
Best Drink Deal In Town!
Drinks range from 75¢ - \$1.25
50¢ DRAFTS
GIANT 60 oz. pitcher only \$2.50
DANCING begins at 10 p.m.
We're easy to locate!
1100 Johnson Ave., Pullman 332-4813

Ar-go-naut (är'gə nôt', -nat')

n. [L. *Argonauta* {Gr. *Argonautes* {*Argo*, Jason's ship + *nautes*, sailor {*naus*, ship} (1.) Gr. Myth. Any of the men who sailed with Jason to search for the Golden Fleece. (2.) A person who took part in the California Gold Rush of 1848-49.

Academic COMPUTER SYSTEM

A system designed for the advanced student and faculty member — programming languages, word & text processing, CPM™ operating system.


Kay Pro IV - dual disk portable computer
was \$2,266.95
Now only \$2,196

(1) box 10 E.M.S. #5 data disks
Mannesmann Tally MT-80 Sprint Printer
(1) Parallel Printer cable
(1) Disk bank storage box

Community Computer Centers
East 330 Main St. Pullman
Ask for Mark or Gwen

CATCH A RISING STAR

GEORGE WINSTON
Solo Pianist



"Winston's best-selling albums feature serenely lyrical solo piano music, but in concert he also reveals the soul of a stride-playing boogie-woogie man just itching to break loose."

WEDNESDAY, NOVEMBER 9, 7:30 pm, \$5.00
Administration Building Auditorium
University of Idaho

Tickets Available Now at:
U of I Sub Information desk
Process, Inc. (WSU CUB)
Budget Tapes & Records - Moscow, Pullman, Lewiston

ASUI PROGRAMS INVITES YOU TO:

Search under way for director

The search for a replacement of former Director of Grants and Contracts Development Kenneth Laurence, who left last summer, is now under way at the University of Idaho.

Arthur Gittins, director of the University Research Office and dean of the Graduate School, said the new director will be in charge of promoting and assisting in the research development activities of UI faculty and staff. He said that last year, the university processed \$12.5 million in grants and contracts awarded by the federal government, industry and private foundations.

Gittins emphasized the importance of this research money, saying that at a university, "You can do teaching, but you also have to replenish the pot of knowledge," through research. He said research is "a major function of a senior university," and one way to make it possible is to get the grants and contracts necessary to provide sufficient funding for it.

He said he hopes to refill the post by January.

Laurence moved to Arizona and is now working for the Consortium for International Development, a group of universities that cooperatively bid on contracts.

Classifieds

7. JOBS

OVERSEAS JOBS — Summer/year round. Europe, South America, Australia, Asia. All fields. \$500-1200 monthly. Sightseeing. Free info. Write IJC, Box 52-ID-2, Corona Del Mar, CA, 92625.

Hasher wanted at the Alpha Chi Omega Sorority. Call Kathy Murphy at 885-6512.

13. PERSONALS

FB: Remember walking by the river, talking 'til all hours, pea fight, phone calls...mostly, remember 2-1-4!!! Happy eleventh! SS

Dear T.S.R.K.F.—Here's to no more horrible, terrible, no good, very bad days! How about late nite dequiris?! Bye!

hopefully still the free press, twice weekly

14. ANNOUNCEMENTS

RESEARCH PAPERS! 306-page catalog—15,278 topics! Rush \$2.00. **RESEARCH**, 11322 Idaho #206M, Los Angeles, 90025. (213) 477-8226.

Sunday 9:a.m. Bible Study with Bruce Pitman and Dale Ralston. Campus Christian Center (coffee, doughnuts)

Rick Springfield, Little River Band. Staying home? Couldn't get good seats? Call 882-8700. Last chance.

16. LOST AND FOUND.

LOST: Brown felt Resistol cowboy hat at covered picnic shelter in Arboretum Thursday afternoon. Bronze horse head hat tack on left side of crown. Has sentimental value. Please call Carol at 885-8121, 8-5 weekdays or 882-9131 evenings and weekends.

17. MISCELLANEOUS

More used books coming in. Art, philosophy, fiction, Montana, Gladys Taber, etc. "Bruised Books," Main and Grand, Pullman. Tuesday-Saturday. Always buying.

THE **HILLTOP** MOTOR INN & STEAKHOUSE
P.O. BOX 155 PULLMAN, WA 99163
509-334-2555

ANNUAL MEMBERSHIP MEETING - all welcome
Sunday, Oct. 30th 7 PM
at Campus Christian Center In Main Lounge
882 Elm
Moscow Food Coop 882-8537

THE TIME IS NOW




ADVERTISE WITH THE ARG

COUPON

\$1.00 OFF OUR WAITLESS LUNCH
all you can eat!

- Salad Bar
- Pizza
- Spaghetti



- Lasagna
- Garlic Bread
- Desert

Mon-Fri WEEKDAYS 11:30AM - 2 PM
Good Thru 10-7-83
215 N. Main 882-4633

Sound West



NOW \$2.89
suggested retail \$6.39

moscow mall

Fifth Floor of French Hall feels sympathy for Sororities so donates two new members

Bon Voyage

POOL TOURNAMENT
Every Tuesday Night

Doubles start 6:30 p.m. **Grandprize \$300** Singles at 8:00 p.m. **\$100**

MUST WIN one week to be eligible for End of Semester Tournament and the Grand Prize

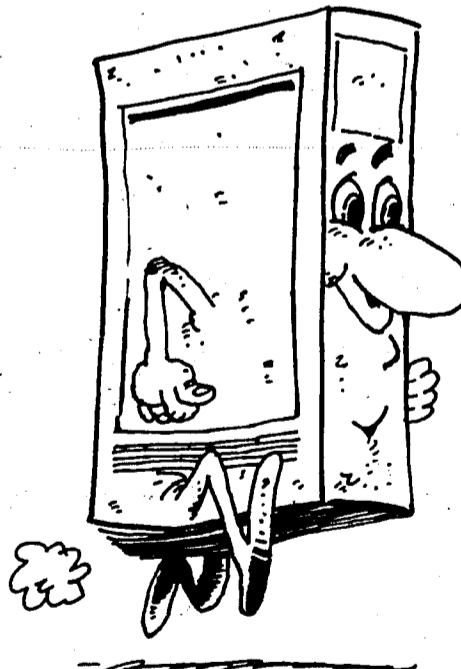
THE DOWN UNDER
S. East 1100 LATAH Pullman

WEDNESDAY October 5 ONLY

Paperback Exchange NO PURCHASE NECESSARY

MOSCOW'S ALTERNATIVE BOOKSTORE
220 W. 3rd St. (next to the Micro) 882-8781

\$2.00 WORTH OF FREE BOOKS!
One per customer



GREAT VALUES
at the **University of Idaho Bookstore**


60% OFF on Old and Discontinued TEXT BOOKS!
Limited to stock on hand.

SUPER SAVER EYEGLOSS FRAMES

•Some Designer Frames
•No Returns
•No Exchanges
Good Sept. 23 thru Oct. 7.

7.95 plus tax

Exclusively At:
DR. ARTHUR B. SACHS OPTOMETRIST
E 337 MAIN ST - PULLMAN 334-3300



THE WILD HARE
Proudly Introduces



KRISTIE McMASTER
our newest hairstylist!

THE WILD HARE
Located in back of the Moscow Hotel
112 West Fourth
882-6563



Greg Kihn show gets canceled

The show will not go on for the Oct. 22 Homecoming concert at Washington State University's Beasley Coliseum, for the show has been canceled.

Greg Kihn, lead vocalist and rhythm guitarist for The Greg Kihn Band, has discontinued the band's tour for health reasons. Kihn's doctor reportedly advised him that he temporarily discontinue his stage appearances in order to save his voice.

The concert was to have featured the Kihn group, Stevie Ray Vaughan and Rail.

The program was co-sponsored by ASUI Programs.

Nightline

From page 1

Bruce Palmer of the Department of Psychology at WSU helps to train new Nightliners. He firmly believes in Nightline/Crisis Line as a medium to help unhappy people in the most anonymous way possible.

"We have to feel that we have the right to involve ourselves in other people's lives — when it comes down to it, it is we who are responsible for keeping that person alive," Palmer said.

Most students, however, don't believe that the problems that the Nightline callers are trying to

cope with are ones that they'll experience; that may be why, when the problems do come along later, those students are so taken by surprise. And when they subsequently can't deal with the problem, they may turn to suicide as a way out.

There are a number of "high risk groups" more likely to commit suicide than others. High on this list are adolescents, college students, alcoholics and drug abusers.

Do you recognize anybody you know on that list? If you don't, bear in mind that suicide is the second highest cause of death in adolescents and college students.

Suicide victims don't need to be depressed. Many have been

known to elaborately plan their suicide, remaining totally calm and collected at the same time.

When a suicide is committed, Matuszek takes it very personally and describes herself as "heartbroken." It makes her wonder why that person did not call, and even if they did, why they didn't stop and think about it more.

Robert has part of that answer. "The trouble is that people don't want their friends to know that they've been desperate enough to call," he said. "If they could just hide themselves away for a while in their room and talk, nobody would know, and all their problems could be helped."

Despite this attitude, Nightline's clientele has grown

steadily since its conception.

During discussion at a recent Nightline training session problems came up facing today's college students. Within a school environment, there is so much pressure to conform to everyone else's idea of what you should be like. If you can't live up to people's expectations, you experience a sense of failure which could lead to depression, if not suicidal feelings.

Many of the problems encountered by Nightline/Crisis Line can be attributed to one thing — a bad self-image. If you have ever considered yourself unattractive, unintelligent, unlikeable, and in particular,

See Nightline, page 16

WOMEN'S CHORUS
organizational meeting

Tuesday, Oct. 4th
4:00 p.m.

WOMEN'S CENTER
885-6616

The Peppermill
espresso cafe featuring

Cappuccino, Espresso
Italian Cookies & Candies

Gift Shop

Open 10 - 9 Weekdays
10 - 6 Saturday
10 - 5 Sundays
Moscow Mall

WEDNESDAYS ARE DOG DAYS

at **CATALINA YOGURT CO.**

DAVIDS CENTER
3rd and MAIN
882-8381

Catalina yogurt Co.

coupon—
ALL YOU CAN EAT HOT DOG FEED
— PLUS —
Round of MINATURE GOLF for only \$2.95
Valid only on WEDNESDAYS with coupon coupon—

We also Feature:
• FROZEN YOGURT
• SOUP AND SALAD
• VIDEO GAMES

LOWEST PRICES IN TOWN!!

Order your T-shirts NOW for upcoming DANCES!

BLACKMARKET

OPEN TO PUBLIC
FAST
CUSTOM T-SHIRT PRINTING
DISCOUNTS ON LARGE ORDERS
LETTERING
BASEBALL CAPS
SPORTS WEAR

One or five dozen—**WE HAVE IT!**

We specialize in GROUP ORDERS.

Take advantage of your fees and use this **STUDENT SERVICE**

Hours of Operation:
10 AM - 8 PM Mon - Fri
12 PM - 5 PM Saturday

University of Idaho
Student Union Basement
885-7940

HELP WANTED

Student Advisory Services is seeking a RPCV for the position of Peace Corps Recruiter at the University of Idaho. Stop by UCC 241 for further information and application.

Closing date for applications is October 7, 1983.

PEACE CORPS

Radio Shack "REDISCOVERY DAYS"
DEALER

Presenting the Color Computer 2

Color Computer 2 16K Standard	299⁹⁵	199⁹⁵
Color Computer 2 16K Extended	319⁹⁵	279⁹⁵

• Now With Typewriter-Quality Keyboards
• Both Models Use Instant-Loading Program Paks
• Eight Vivid Colors With Exciting Sound Effects

TRS-80 Standard BASIC Color Computer 2. An improved version of our popular family computer with a compact white case, typewriter-quality keyboard and a super low price! You can play exciting games, teach your kids, track your investments and lots more. Fully expandable. With manual. U.L. listed.
26-3026.....239.95

TRS-80 Extended BASIC Color Computer 2. All the features of our Standard Color Computer 2, plus advanced programming capabilities! Easily create spectacular, high-resolution graphics with music and sound effects using one-line commands. Many other powerful features, too. With two manuals. U.L. listed.
26-3027.....319.95

Cox & Nelson
414 S. Main
(offer good 10/5 - 10/9)

Argonaut Classifieds

Nightline

From page 15

unloved, you are a potential Nightline client.

Nightliners say they cannot emphasize enough the importance of individuality and self-confidence when dealing with a person's image problem.

"At the same time, you can't let that person think you are smugly sitting there on the other end of the phone telling them what they should or shouldn't do. We're not perfect either; nobody is."

There is no set practice for dealing with callers. David, a sophomore at WSU who works on the Crisis Line, said, "Each situation is so different, you just have to listen to the caller, and size up what they are thinking

and if they are making threats, just work out whether they really mean it or not."

There are many different reasons why an individual will contemplate suicide. If they are really determined and are certain that it's the only way out, they will go ahead and do it anyway. If not, they will issue a cry for help. Matuszek firmly believes that if a person goes far enough as to call Nightline, then a small part of them really wants to live very badly.

"What we try to do is make them see that if they really feel that suicide is the only answer, then will it make that much difference if they do it today or tomorrow?" This is referred to as

"the 24-hour contract" and gives them time to think it over more seriously.

This strategy is very carefully formulated from psychological studies on crises; how they arise, what effects they have, and how long they last.

As Palmer says, "A crisis state is one of increasing hopelessness and depression. It is usually of very short duration, but can be preceded by a long period of accumulating worries, and even then that person may not be out of danger completely."

The people who work on Nightline/Crisis line admit that it's not an easy job. The training is intensive — six weeks, every

weekend and meetings during the week in small groups. Then, once trained, the counselors have to promise 100 hours of work in the following semester. Robert says, "It's not easy at first to sit there wondering who's going to call, and it can get very disillusioning if nobody calls for a while. But then, if just one person calls it really bucks you up."

So, what makes people want to work on Nightline/Crisis Line? Susan, a freshman at the UI, has just begun her training. "I saw these signs around campus, and thought to myself, 'That's the sort of thing I want to do.' I like people; I have friends who get very depressed and I enjoy helping them, so why not others?"

The Nightline service doesn't stop at answering a telephone, talking, and saying goodbye. In many cases Nightline refers the caller to other counseling services where they can establish more personal contact.

Robert says, "After I've put the phone down I begin to wonder what that person is doing, whether I've given them the help they needed — and at the right time. If we've referred them to anybody, I hope that the professional help will help them get over, or at least help to alleviate, their crisis."

Personal problems are very private things, and to this end, the service is completely confidential. As David says, "It's a very personal thing. If someone has called the line, it means that they are unable to talk to their friends. We have to become their friend and confidante."

However, the cost of becoming a friend and confidante is high. Nightline will cost \$8,700 to run during the next year, and the pursestrings are tightening.

The money that keeps Nightline operating comes from Moscow United Way, Latah County, the Public Welfare Foundation, contributions from the community and the ASUI.

Unfortunately, an appeal for an extension of \$1,000 to this year's grant from the ASUI has recently been turned down, leaving Nightline \$2,000 beneath its target budget for 1983-84.

Nightline officials are hoping to make up \$1,000 of this from gifts and contributions, but unless the ASUI can come up with at least some of the money, Nightline will be "struggling to survive," according to Matuszek, who adds, "We have already received \$1,000 from the ASUI in the spring, and they have always been so generous in the past."

She has resubmitted an application for \$750, and is hoping this one will be approved. Considering that two-thirds of Nightline's callers are from the UI community, she feels that the request is justified. "After all, asking for one-quarter of our budget for two-thirds of our work isn't unfair."

The Nightline budget is divided in several ways between Matuszek's salary, the telephone bill ("which is humongous"), training, supplies and malpractice insurance.

Tony, who admitted to having used the service himself, has very strong views on the subject of financing. "I mean, how can you possibly assess how much life is worth? When I called, I wasn't suicidal; I only needed someone to talk to, and those guys really helped."

Robert summed up the situation: "Helping others can give you such a good feeling — and that is what carries you through. If you can turn 'round at the end of the day and tell yourself that you really helped someone, then it makes all the effort worthwhile."

Editor's note: The names of the above Nightline counselors have been changed to protect their anonymity.

GRADUATING ENGINEERS:

Sign up now for a look at one of the year's best job offers

We offer civilian career opportunities that stress immediate "hands-on" responsibility—your chance for recognition, reward and professional growth right from the start.

Mare Island is an engineer's kind of world. We're the third largest active naval shipyard in the U.S. and the West Coast's oldest and best known naval institution.

And, we're located in one of the world's best places to live and work—the heart of Northern California! San Francisco is just a bay away. . .the famous wine country is right next door. . .and sailing or skiing are as close as next week-end! To get complete information, contact your placement office and sign up now for an interview.

CAMPUS INTERVIEWS

OCTOBER 12, 1983

MARE ISLAND NAVAL SHIPYARD

Vallejo, California

An Equal Opportunity Employer

U. S. Citizenship Required

