



Argonaut

THE STUDENTS' VOICE

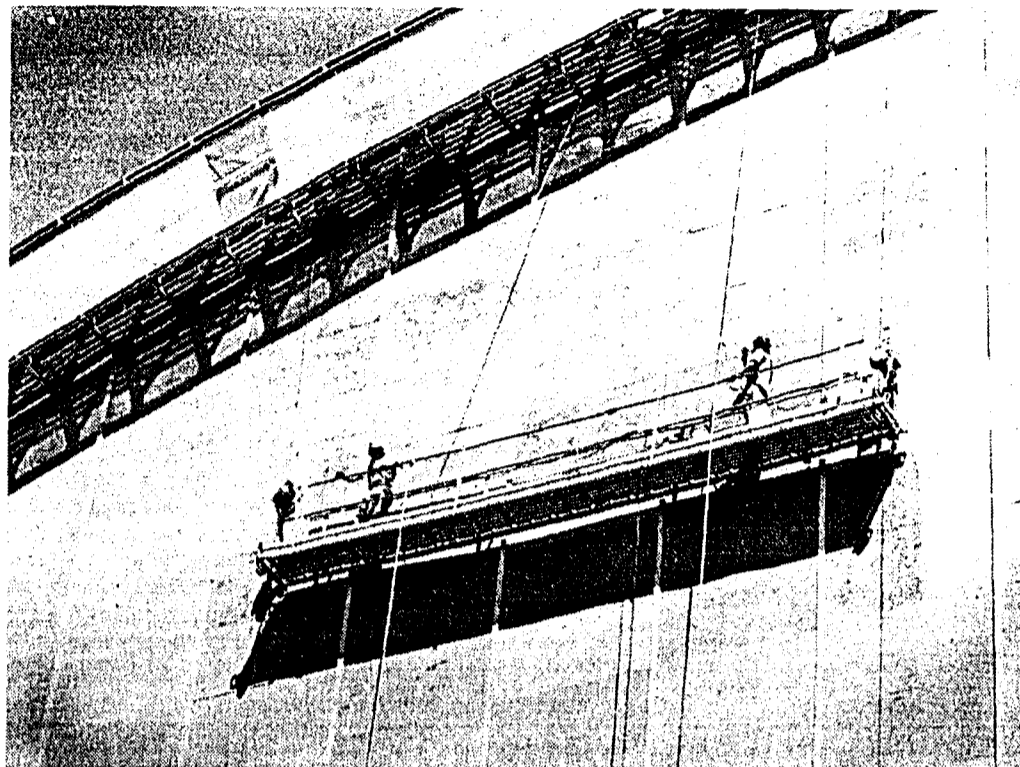
VOLUME 100 NUMBER 8
WEDNESDAY, JULY 23, 1997

Punk show

see page 3



Kibbie Dome sees fresh paint



LAURA LAFRANCE

The Kibbie Dome gets its first coat of paint in 16 years. Part of the work is being done by the Idaho Department of Correction Work Crews from Orofino. Two ten-man crews arrive each day and are paid 50 cents an hour. The facility recycles the rest of their wages to use for room and board.

UI ENROLLMENT EXPECTED TO HOLD STEADY

WES RIMEL
REPORTER

Current enrollment figures at the University of Idaho for the fall are nearly identical to the figures of one year ago. Dennis Links, UI Information Specialist said, "As of July 21 we have an enrollment of 8,235 on-campus students for the upcoming school year. On July 18 of 1996 we had 8,301 students enrolled."

Enrollment for UI over the entire state is currently 8,429. Links said, "This figure is simply a head count of all the students who are currently registered. There are tons of different ways to count students. The only figure that matters is the one we submit to the State Board of Education. That is where we get our funding."

Though the figures are nearly identical, enrollment has been decreasing the past few years. Dan Davenport, UI director of Admissions and Student Financial Aid Services said, "The hike in out-of-state tuition is the major factor in the decrease in enrollment."

Davenport said, "The out-of-state students used to be subsidized by Idaho state taxes. The Idaho State Legislature felt that students from outside our state should start paying their fair share."

Davenport also said, "The other major factor that has decreased enrollment was a new law passed in 1993 on what defines an Idaho resident." Under the 1993 law, a student must live in Idaho for 12 months for purposes other than school to be considered a resident. Previously, students only had to live in Idaho for 12 months to become a resident. Davenport said, "Before, some students would pay for a year or two of out-of-state tuition and then become a resident."

UI has been actively recruiting across Idaho and Washington. Davenport said to attract students in 1997, "We went to community colleges in Idaho every month to recruit and went to community colleges in Washington sometimes as well."

UI has also been expanding programs to support out-of-state tuition waivers and new scholarships. Instead of out-of-state students being subsidized by Idaho taxes, some are now receiving waivers from alumni funds. In addition, UI is currently involved in trying to change its image among prospective students and working on plans for where enrollment should be 10 years from now.

Creek Clean-up

SHINGIRAI CHRIS KWARAMBA
REPORTER

Two weeks ago a local police officer spotted a white substance in Paradise Creek and reported the matter to safety officials.

The source of the substance was determined to be the Student Union Building at the University of Idaho.

The drain system, which was causing waste material from the SUB to flow into Paradise Creek, has since been repaired.

The white sediment was later identified as latex paint. The source of the sediments was a faulty drain. Waste was flowing into Paradise creek instead of a sump or waste tank.

UI Environmental Health/Safety Officer Fred Hutchison said the damage was not serious and repairs were fairly simple to undertake. The waste was rerouted into the sump tank.

Hutchison could not determine how long the leakage had been occurring. However, he said that a substance like latex paint would cause minimal environmental damage.

SUB Building Manager, Carol Farley, said the waste was coming from a sink in the SUB bowling alley.

According to Farley, the only type of waste that flowed into the creek from that sink was paint from paintbrushes cleaned in the sink and waste water from a basement washing machine.

She said the structure was designed and built in the '30s and it was likely that the leakage was due to a flaw in the design of the drainage system. She said this was common for buildings that old.

"I was surprised how quickly the problem was corrected," Farley said. "The total cost was less than \$1,000 dollars."

Farley said it was likely the pollution to the creek from that particular sink could have been occurring from the time the building was constructed. She added "There was no way that anyone could have known it was happening and it was lucky the policeman happened to see the white sediment."

The stream's water and its contents are under constant scrutiny by Washington State University. According to Hutchison the trace amounts of *E. coli* found from previous tests were not likely to have come from the SUB.

Market turns 20

SHINGIRAI CHRIS KWARAMBA
REPORTER

The Moscow community celebrated the 20th anniversary of the Moscow Farmers' Market on Saturday, July 19th. The Moscow Arts Commission planned a special market day for the occasion.

For six months every year from the first Saturday in May through the last Saturday in October the Market is open from 8 a.m. to noon. Festivities started at 10 a.m. and continued until midday.

Local artist Linda Canary, with the help of Moscow children and teens, painted a commemorative mural during the event. The mural is now on display as the new backdrop for the outdoor stage in Friendship Square.

The Farmers' Market has been a regular weekend event in Moscow for the past 20 years. Moscow farmers and farmers in the Palouse region meet on Saturdays in the parking lot behind Friendship Square. Their fresh homegrown produce is popular with local residents.

Elizabeth Moore, a Moscow resident, said she visits the Market at least twice a month during the summer. Her favorites, preserves and honey, are just a couple of examples of the vast array of farm produce available every weekend.

Market customers were able to enter a raffle held over two weeks. The winner went home with a Farmers' Market tote bag filled with homegrown goodies.

Organizer of the event Mary Blyth said, "The Farmers' Market provides a sense of community to this small city." She said events like the Farmers Market help put Moscow in publications such as *The Best 100 Small Towns in America*.

"This Saturday was the biggest Farmers' Market ever. In terms of the activities and the number of people in attendance," Blyth said. However, due to multiple unrestricted entrances it was difficult to calculate the actual number of people there. Blyth estimated more than a thousand Moscow residents came to the Market that day.

One of the highlights of the event was a cake cutting celebration.

Other highlights included a special awards ceremony in honor of the farmers who have been selling their wares at the Market since its induction in 1979.



Mary Blyth holds a mural painted by children for the 20th anniversary of the Farmers' Market.

LAURA LAFRANCE

Announcements

WEDNESDAY, JULY 23

- The Brown Bag Noon Concert will be held on the Administration Building lawn from 11:45 a.m. to 12:45 p.m. The performer is Tom Armstrong, a folk musician. Admission is free.
- Today is the deadline for information submission for the *Argonaut* Freshman Orientation issue, which is being sent July 28 to incoming freshmen.
- *A Midsummer Night's Dream*, from the Idaho Repertory Theatre, will start at 7:30 p.m. on the lawn between the Swim Building and Education Building. For more information call 885-2979.

THURSDAY, JULY 24

- Classical guitarist James Ried will perform at East City Park, from 6:30-7:30 p.m. This is part of the "Fresh Aire Concert" series. Admission is free.
- *Greater Tuna*, from the Idaho Repertory Theatre, will start at 7:30 p.m. at the Hartung Theatre. For more information call 885-2979.
- WSU Theatre Department is showing *Pirates of Penzance*. Call 335-7447 for more information.

FRIDAY, JULY 25

- *The Outfit*, from the Idaho Repertory Theatre, will start at 7:30 p.m. at the Hartung Theatre.

For more information call 885-2979.

- *Pirates of Penzance*, from the WSU Theatre Department, will play today. For more information call 335-7447.

SATURDAY, JULY 26

- The Moscow Farmers' Market, from 8 a.m. to noon, will take place in Friendship Square. For more information call 883-7036.

- *Forever Plaid*, from the Idaho Repertory Theatre, will play at 7:30 p.m. at the Hartung Theatre. For more information call 885-2979.

- WSU Theatre Department is showing *Pirates of Penzance*. For more information call 335-7447.

- The Palouse Folklore Society is holding a summer dance at 8:00 p.m. located at the Blaine Schoolhouse. Instruction begins at 7:30 p.m. The cost is \$5. For more information call 882-4620.

TUESDAY, JULY 29

- *Greater Tuna*, from the Idaho Repertory Theatre, will play at 7:30 p.m. at the Hartung Theatre. For more information call 885-2979.

*Information must be submitted by Monday of each week.

UI participates in Project Nova

Associated Press

The University of Idaho is launching a special effort to make math, science and engineering exciting for students.

The school has joined NASA's Project Nova, a program designed to enhance scientific literacy in college students studying to become teachers. The university is part of the Project Nova consortium, along with the University of Alabama and Fayetteville State University, and during the week hosted one of the program's quarterly workshops.

Project Nova's major goal is to teach potential science and math teachers how to make their subjects exciting to students. By encouraging universities to revamp education students' courses into a more interactive, less lecture-heavy format, the program hopes the students will continue the trend when they become teachers.

"Nova provides ideas, training and some money to universities to create innovative courses, or series of courses, on their campus," said Dennis Sunal, a professor of teacher education at the University of Alabama and a team leader for the project. "We want to change the way courses are taught."

Workshops generally consist of about 10 interdisciplinary teams of faculty members from different universities. The teams, including faculty from two or more colleges and often someone from the university's administration, must apply to attend.

Once a university team has successfully completed a workshop, it's eligible to apply for a \$30,000 NASA grant to develop and implement improved courses. So far, 18 colleges and universities have received NASA grants, and more than 65 have participated in workshops. More than 150 faculty members and university officials have attended.

When Idaho applied to become part of Project Nova, it offered three courses it would like to improve. One

was introductory astronomy, a class required for secondary education majors with a minor in either physics or earth science.

Traditionally, it has been a lecture class. The university proposed complete restructuring to make it more student-friendly by reducing the class from about 80 percent lectures to less than 20 percent. Idaho also added interactive group activities, extended the use of technology like the Internet to facilitate research and did collaborative work with similar courses at other schools.

The Project Nova workshop at Moscow this week, the seventh since the program began last February, had university teams from Florida Atlantic University, Alaska Pacific University and several schools in between.

Some of the most excited participants were from other Idaho schools looking for a way to collaborate on improving teacher training.

Fran Golding, College of Southern Idaho, said making sure CSI was involved and up to date with changes at the universities is vital to the success of community college students.

"We have to make connections with the universities, because without them we're dead in the water," Golding said. "If our students can't transfer their credits smoothly to the bigger schools, there's no reason for them to go there."

Ted Singletary of Boise State University said the Project Nova workshop and program offers a rare opportunity for Idaho schools to work together instead of fighting for funding. NASA's grants are a way to change university curriculums without going through the usual bureaucratic channels.

"If we started trying to change the curriculum today, it'd take 10 years to get anything done," Singletary said. "This way, we're getting students involved a lot sooner."

UI on-campus employment opportunities

Summer Jobs

- Clerical Roster*
- Laborer Roster*
- Custodian
- Child Care Provider*

- Research Assistant
- Biochemistry Instructor

Fall Jobs

- Building Supervisor
- Building Attendant
- Weight Room Attendant
- Event Staff
- Event Custodian
- Laboratory Assistant
- (Nude) Art Class Model
- Resident Assistants

*continuous recruitment

Student & Temporary Employment Services has these part-time and/or temporary positions posted. For a full description of a position; more information; or to view a listing of off-campus employment opportunities please visit STES, 1st floor SUB, or call 885-4500. Summer office hours are 7:30-4:30 p.m., Monday-Friday. Positions are also posted on the Internet at <<http://www.uidaho.edu/hrs/sep>>.

Annual Dan O'Brien Golf Scramble

August 16, 1997
UI Golf Course

Welcome **Dan O'Brien**, World Champion Decathlete, to the **4th Annual Dan O'Brien Golf Scramble** at the University of Idaho ASUI Golf Course. Proceeds from the tournament will be donated to the University of Idaho Men's Track and Field Team for travel, recruiting, and equipment. You are helping the UI men's team keep up their winning streak - 1995 & 1996 Big Sky Champions, 1997 Mt. West Champions, and 1997 Big West Champions.

LOTS OF FUN:

- Team photo with the Olympic Medalist
- Prizes for the longest put, longest drive, shortest drive, closest to the pin
- Prizes for low-net and low-gross scores
- Complimentary beverages, BBQ dinner, Dan O'Brien shirts, and awards ceremony
- Drawings for prizes

Test your accuracy!

Putting contest for Nike golf shoes
10:00 am - 11:30 am
3 BALLS / \$5
7 BALLS / \$10

THINGS YOU SHOULD KNOW

- Field will be limited to 28 teams, 5 person team. Late entries will be accepted if space is available.
- Entry fee **must** accompany entry form to assure a confirmed position
- **REGISTRATION DEADLINE IS AUGUST 11, 1997**
- Pre-organized teams will be accepted; individual entries will be assigned to teams by Tournament Committee.
- Golf cart reservations must be made early; cart supply is limited, first come-first served. For reservations, please call the UI Golf Course at 208-885-6171.
- Entry fee is \$50 per person and includes team photo, T-shirt, BBQ dinner, greens fee, complementary snacks, and beverages. **There is NO age limit.**
- Check-in and team photo begin promptly at **10:00 am**. Noon shotgun start. **Please** make sure your entire team is present for check-in and team photos.
- Rules will be provided at check-in or at your early request.
- 5 person team.
- UI golf passes **do not** apply to tournament entry.

KARAOKE 
MOUNTAIN STYLE
AT SLURP & BURP...DANCE, SING, FUN!
FRIDAY & SATURDAY JULY 25 & 26 8:00-1:00
NEW MANAGEMENT! NEW, CLEAN ATMOSPHERE!

crazy days
SIDEWALK SALE!
**1/2 OFF HALF PRICED BOOKS
CLEARANCE ART SUPPLIES
& MORE GREAT DEALS**
UNIVERSITY OF IDAHO
THURSDAY & FRIDAY **BOOKSTORE**
JULY 24TH & 25TH



Psssst...

89.3 FM
KUOI

Skaters get attention of UI officials

MICHELLE KALBEITZER
EDITOR IN CHIEF

Vandalism, nuisance complaints, and safety concerns have prompted University of Idaho officials to consider banning skateboarders and rollerbladers from certain areas of campus, including the UCC, the area between the UCC and library, and the decorative cement steps near the Student Union Building.

"Our intention is to post signs that you can't skateboard in this area," Carol Grupp, Administrative Affairs director, said. Although Grupp said a final decision has not been made yet, she expects one within a couple of weeks.

UI has received complaints from people concerned for their safety, as they are forced to share small pathways with high-speed skaters. Also, noisy skaters have disrupted classes in session in the UCC.

But what's making officials see red is the vandalism. The primary culprit is the wax used by skateboarders, which ends up marking university property. Grupp said it takes time and money to remove the wax.

The UI campus is not the only area that skaters frequently visit. Moscow Police Officer, Carl Wommack, said, "We've had several problems throughout the downtown area. Several businesses don't want them on their property." The business owners are also concerned about safety issues as well as the disruption some skaters impose on their businesses.

Wommack said police officers often encounter problems when they ask the skaters to leave the area. "They have a very profane attitude when you approach them." He said the skaters who are polite are being pushed away as a result of a few people tarnishing their image.

"They've got to have someplace to skate," Moscow resident Maria Theresa Maggi, said.

Maggi's eleven-year-old son, Michael Wilson, is an avid skater who enjoys skating on the UI campus. Maggi said her son and his friends were



LAURA LAFRANCE

asked by police to stop skateboarding on campus. "Everyone who rollerblades or skateboards are not automatically a vandal," Maggi said. "I think there's a lot of miscommunication...and a tendency to stereotype." She stressed that the boys were behaving and not hurting anyone else.

Grupp said if everybody was polite and minded their own business there wouldn't be a problem.

Maggi said, "I think a compromise could be worked out." Presently her son is working on a petition to allow the building of a local skate park that would hopefully eliminate any future problems with skaters.

Nevertheless, UI will be implementing immediate solutions for the campus in the near future.

UI sponsors 'Quality Fuel' conference

SHINGIRAI CHRIS KWARAMBA
REPORTER

"Producing a Quality Fuel" was the theme of this year's conference on the development of biodiesel as a commercial fuel. The conference was held in Boise last weekend. It coincided with Alternative Fuels Week in Idaho, July 7-11, as proclaimed by Gov. Phil Batt.

The University of Idaho was represented by several participants from the department of Agricultural Engineering at the two day event.

The conference was sponsored by UI's department of Biological and Agricultural Engineering and the National Center for Advanced Transportation Technology (NCAAT).

Among other sponsors were the U.S. Department of Energy, Office of Transportation Technologies; J.R. Simplot Company; Caterpillar, Inc.; Kenworth Truck Company; and the Idaho Department of Water Resources Energy Division.

About 80 participants from Europe and the United States attended.

The highlight of the conference was the launching of a J.R. Simplot Company Biodiesel Project headed by UI Graduate Student Gary Lowe.

Lt. Governor C.L. Otter was among the dignitaries present at the inaugural ceremonies. UI President Bob Hoover could not attend because of a canceled flight.

Lowe said he hopes biodiesel will eventually become a substitute for

fossil fuels.

"Using used french frying oil and oil from potato waste," Lowe said, "Simplot is in the process of producing enough biodiesel to fuel a Kenworth truck for two hundred thousand miles."

The truck is going on a test run between Caldwell and Grandview early next week.

Lowe is working in conjunction with Chuck Peterson, a UI professor in the Department of Biological and Agricultural Engineering. Peterson has been conducting biodiesel research since 1979.

UI biodiesel researchers are among the pioneers of the field. Peterson said he began by producing fuel for tractors and later on moved to on-road applications such as the three pickups UI currently runs. He is also in charge of producing fuel for a test vehicle in Yellowstone Park.

He said biodiesel, right now, is not expected to completely replace fossil fuels but it will serve as a useful alternative. Production of the fuel is currently very expensive.

It is more friendly to the environment than conventional diesel in that it is biodegradable and produces less carbon monoxide. Currently it is about 12 percent less efficient than diesel in terms of power output, but research in the field is ongoing.

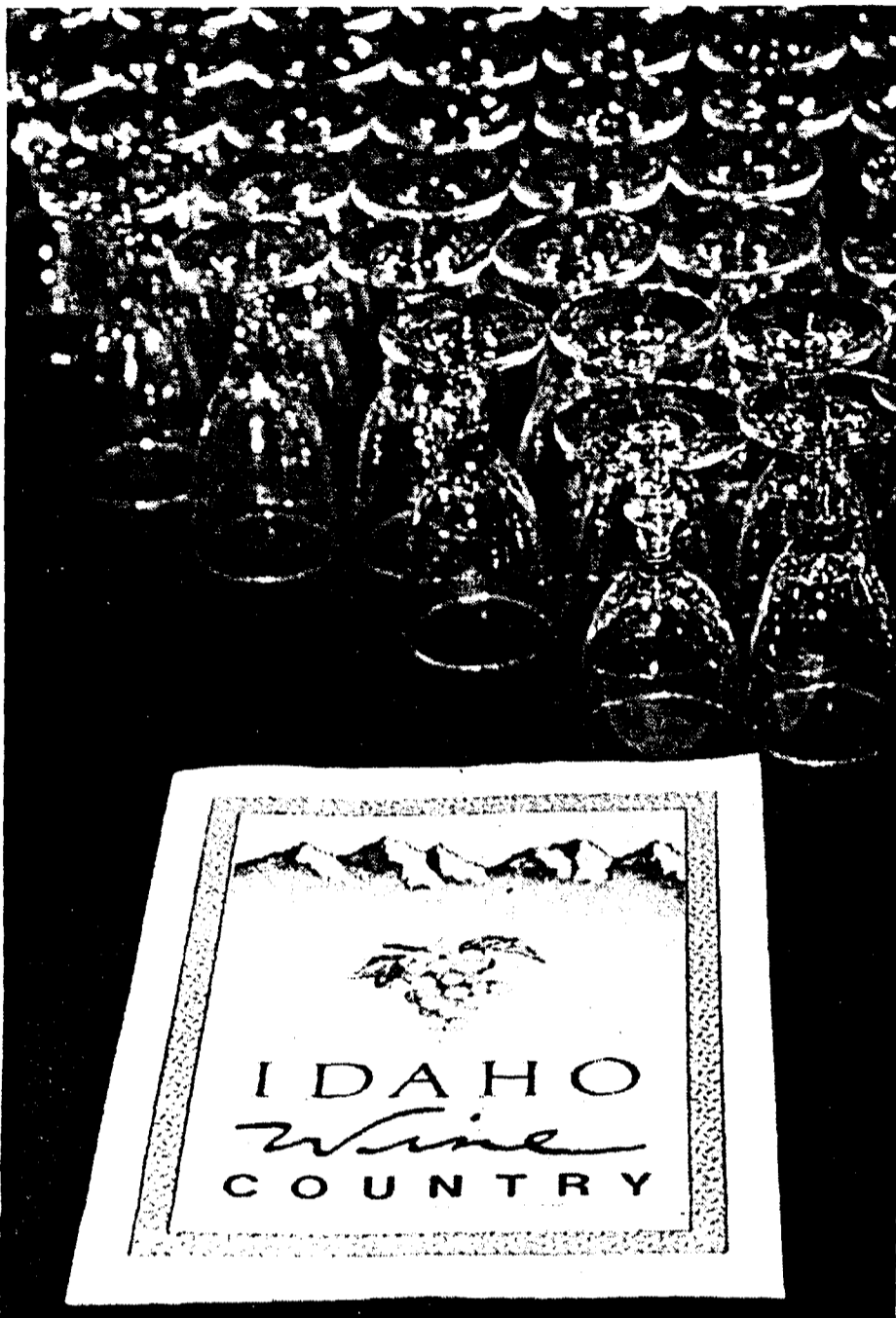
Share Your Faith

<p>Trinity Baptist Church (SBC) We put college students first 6th & Mountainview Office: 882-2015 SUNDAY WORSHIP College Worship 9:15 am College Bible Study 10:45 am Family Worship 10:45 am Family Bible Study 9:15 am</p>	<p>First Presbyterian Church 405 S. Van Buren (across from the courthouse) Sunday Worship 9:30 am Dr. James W. Fisher Pastor Lin Harmon Director of Youth Ministries 882-4122</p>	<p>Living Faith Fellowship Ministry Training Center 1035 South Grand, Pullman 334-1035 Dr. Karl Barden, Senior Pastor Phil Vance, Campus Pastor Sunday Worship 9:00 am Wednesday Worship . . . 7:00 pm A dynamic, growing church providing answers for life since 1971</p>
<p>Emmanuel Lutheran Church 1036 W. A St. • Moscow 882-3915 Pastor: Dean Stewart Campus Minister: Tim Freson Choir Director: Jerry Yonkman Sunday Worship: 8:00 & 10:30 am Sunday School-Adult Studies: 9:15 am For van ride call by 9 am</p>	<p>St. Augustine's Catholic Church & Student Center Sunday Mass 9:30 am Daily Mass 12:00 pm in Chapel Wed Reconciliation 4:30-6:00 pm 628 Deakin (across from SUB) 882-4613</p>	<p>Unitarian Universalist Church of the Palouse 420 E. 2nd • Moscow (Corner of Van Buren) Sunday Services & Nursery Care 10 am 882-4328</p>
<p>Christian Science Church 3rd & Mountainview • 882-8848 Sunday School & Church Services: Sunday 10:30 am & Wed 7:30 pm Christian Science Reading Room 518 S. Main - Moscow Tues-Fri 2-6 pm, Sat 10-2 pm</p>	<p>Pullman Church of Christ N.E. 1125 Stadium Way • Pullman, WA 332-6815 Sunday Worship at 9:30 am Bible Class 11:00 am Wednesday Night Bible Study in the CUB at WSU 6-8 pm</p>	<p>Concordia Lutheran Church Mo Syn NE 1015 Orchard Dr. Pullman • 332-2830 Sunday Morning Worship 9:00 am Student Fellowship: Tuesday 7:30 - 9:00 pm Rev. Dudley Nolting Ann Summersun Campus Ministries</p>

A Religious Directory

To place your ad in the next
Religious Directory of the Argonaut,
call 883-7794 by Monday at 3pm.

DIVERSIONS



Palouse Wine and Food Festival makes a pleasant weekend

DAVID CAMDEN-BRITTON
CONTRIBUTING WRITER

Amidst a flurry of wine glasses and tasty foods from various local vendors, the Palouse Wine & Food Festival graced the halls of the Eastside Marketplace. Organized by Tony Hall and the good folks of The Emerald Gourmet, he described it as, "a chance to promote the Eastside Marketplace, celebrate Idaho products and get the word out about Idaho wines."

In fact, the word is spreading about Idaho wines in the tasting circles; the Pend O'Reille Winery's Cabernet Franc '97 won an award this year for creating an outstanding wine. After sampling some of the wares being offered, I can concur that Idaho has been overlooked for too long as a respectable wine growing region. Two exceptional vintages are the 1992 Sawtooth Cabernet Sauvignon, and the aforementioned Cabernet Franc.

The Sauvignon was surprising in its mellow body, and hint of berries. With a clean finish and unassuming aftertaste, it would easily combine with a pesto sauce pizza, or perhaps a hearty bowl of stew. However, its delicate flavor would easily be overwhelmed by Spaghettios, or Ravioli. Despite the mellow taste, this is not a wine to serve with cereal, or mac & cheese.

The Cabernet Franc, on the other hand, was much more robust and could easily hold its own against any of the microwave lasagnas around, or spicy beef burritos. Be sure to match your wine carefully with your planned meal, or you may find yourself in the unenviable situation of serving a Riesling with a steaming bowl of Top Ramen. A faux pas difficult to recover from.

Other notable vendors attending were the Indian Creek, Pintler, and Camas wineries, as well as the Koenig Vineyards. Foodstuffs were provided by Pizza Hut, El Mercado, BCR Meats, Pasta Etc., and Cinnamon Sensations.

However, the Festival wasn't satisfied with just providing a variety of foods and outstanding wines, there was the musical stylings of Sean Wilson and Eric Cannavaro, both University of Idaho alumni. A live cooking demonstration using various wines was put on by Vera White (food editor and syndicated columnist with the *Daily News*), and prepared by Peg Hamlett. White remarked that she had enjoyed the presentation but wanted to be sure Hamlett was given due credit for actually preparing the dishes.

Some of the tasty dishes created were a tangy bleu cheese dressing, banana and wine dessert, and sautéed fresh mushrooms in wine.

In a socially responsible move that really deserves some applause, shuttles to Rendezvous in the Park were provided for the guests from Link transportation. ZFun 106.1 also contributed to the events for the weekend.

Those who missed this event are assured that next year's festival will be larger and better than ever. And from the pleased looks on the faces of those attending, it won't be difficult to find eager people to sample the Palouse's best in wine and food.

Rendezvous wrap up

LEX P. LEVY
REPORTER



Local musicians John Elliot (left) and Tom Armstrong spice up Moscow evenings.

Though rain threatened to drive the festivities indoors, this year's Rendezvous in the Park closed Saturday with a fine performance by Dee Daniels and her trio.

The second of the event's two weekends kicked off Friday with the Duffy Bishop Band opening for Charlie Musselwhite and his blues band.

Bishop is a powerful vocalist, and her band romped through blues style rock-n-roll and r&b with a good time spirit that was clearly infectious. Bishop got the early crowd dancing a bit, and even called a number of kids on stage to dance and sing with her on the last number. It was an appropriate opening for what would be an evening filled with the power of blues.

In some circles, Charlie Musselwhite is considered the reigning king of blues harmonica. His career goes back to the late 50s, and he is the real deal. Whether leading his band through raunchy, Chicago-style blues, or playing Delta blues on the acoustic guitar, Musselwhite is a soulful and spirited performer.

If blues and jazz only share one thing, it is that both stick to a basic format. Fortunately for audiences, this format almost always includes plenty of room for improvisation. This was clearly the case Friday and Saturday as Charlie Musselwhite and Dee Daniels let their bands roam and explore the limits of their respective musical forms.

Musselwhite's powerful band consisted of guitar, bass, keyboards and drums. They took their time, giving each other room to build leads and playing off of one another with playfulness and enthusiasm. Musselwhite's harmonica is the very spirit of the blues itself. It is mournful, lonely, aching and dire. It reaches out to you, takes your hand and asks that you come along, it'll all be alright.

The group also played a number of instrumental songs. One, "Blues from Brazil," stood out with its sensuous latin rhythms that foreshadowed the following night's opener, Desafinado.

Brazilian group, Desafinado, opened Saturday night's show with their delicate blend of sexy latin jazz. Their music was delicate, and full of exotic textures that seemed to cast a spell over the audience.

This was just the appetizer, the main course was yet to come.

Dee Daniels is an awesome vocalist. Combined with the trio Eugene Jablonsky on bass, Rick Westrick on drums and Miles Black on piano, her voice was given a platform from which to soar through the heavens.

Dressed in a flowing white shirt, white tights and high heels, Daniels looked very much like the jazz diva her voice has helped her become. She was very at ease and obviously in control as she belted out song after song of world class jazz. This woman can be deep and emotional, then sassy and lighthearted,

and she really stretches the bounds of her tremendous vocal ability. Her trio was given lots of chances to solo, and made the most of the opportunities.

"It's great to play a full set," she said. "At the Jazz Festival I usually play just a song or two."

For an encore Daniels sat alone at the piano and played a beautiful ballad penned by Leon Russell.

Another Rendezvous in the Park has come and gone, and the crowds seemed to enjoy the diverse array of musical talent. The park was busy with people each night, and according to event coordinator, Carol Grigas, the Rendezvous committee was "financially healthy again."

Although this superb event is over, fear not. Moscow still has plenty of things going on, check local papers and billboards for what's happening.



ALL PHOTOS BY DAVID CAMDEN-BRITTON

Seahawks training camp back in Palouse

WES RIMEL
REPORTER



Above: The Seattle Seahawks practice in Cheney, Washington for the upcoming season.
Right: Football players sign autographs for hundreds of excited children after practice.



The Seattle Seahawks decided earlier this year to move their training camp back to Eastern Washington. After 12 years of holding camp in Kirkland, Washington, the team returned to the Eastern Washington University campus in Cheney.

I attended one of their first practices on Thursday, July 17. The media watched, flashing pictures and waiting for practice to end, in hopes of getting a few words from a star. Fans brought or purchased pens and permanent markers in hopes their favorite Seahawk would give them an autograph.

In addition to being able to see Seahawk players up close and personal, fans can also participate in the *NFL Experience*. At the training camp a few tennis courts have been sectioned off for the events. Participants can try to throw a football through a hole or try to score a touchdown with a bungee cord attached to their waist. Also, people can get their picture taken with their head in between the shoulders of a dummy dressed up like a Seahawk and test their skills in punting and kicking as well.

The Seahawks training camp is definitely a family affair. Kids can sign up for free to join the *Seahawks Kids Club*. Upon joining they

receive a free T-shirt and poster. In addition, tickets to the games are also on sale, including season tickets. In fact, the Seahawks offer the lowest priced tickets in the NFL—seats in a certain section of the Kingdome are only \$10 each.

The most gratifying moment of the training camp is seeing the looks on the kids' faces immediately after practice. Security people actually had to restrain the kids from swarming their heroes for autographs before the media had a chance to talk with the players.

Once they were allowed to, kids flocked to the players for autographs. Luckily the Seahawks are a football team and have plenty of players to spread the wealth. The Seahawks first pre-season game is against the Minnesota Vikings this Sunday.

For those who want to attend one of the practices I would recommend sunscreen and something to drink. There is precious little shade, and though drinks are available there is not a large selection. Also, there are T-shirts, key chains, miniature footballs, and more available to buy so bring some money along.

Seahawks practices are held twice a day from approximately 9:00-10:30 a.m. and 3:00-4:45 p.m. Monday through Friday.

Waves of energy coursed through the crowd, as the fury of the heavens was unleashed upon those attending. Screams of rage, dissonant thunder, and the melodic picking of a banjo heralded the coming of Cypher in the Snow to Moscow.

Based in San Francisco, Cypher in the Snow has managed to combine punk attitude, strong musical talent, and pulsating stage presence into a wild stage show, likely to terrify many a parent and send their spawn into wild paroxysms of joy.

While lead vocalist Anna May wrestles Margaret (trumpet), LaLa picks away furiously at an electric banjo. The effect is at once surreal and oddly appealing. Chloe supplies a steady bassline, while Shari (drums) and Toni (guitar) send forth a wall of noise amplified to ear-shattering levels. The effect, you might surmise, is powerful. The crowd sways, captured by the spell woven by these six ladies.

Before you gents rush out to try to woo one of these mistresses of mayhem, be warned, they're strictly for the ladies. Not only does Cypher in the Snow present a strong musical show, but they are fiercely open about their sexual preference. And as Anna May commanded the men in the audience to, "move to the back boys," there was little doubt about where their affections lay.

Despite their wild appearance, and fantastic array of hair colors (blue, black, brown, red, blond, green, pink, and yellow), these ladies are excellent musicians, and quite charming to talk to. Even if you possess the disadvantage of being male. LaLa, a former Moscow resident, was pleased to be back in town and mentioned that KUOI has the group's CD in their library. So, for those who missed the show, all is not lost.

Opening for Cypher in the Snow, a local group, the Pills, warmed up the crowd with their brand of punk. Ben Spencer (drums), Lucas Jones (bass), and Adam Burke (vocals/guitar) ripped up the night with a variety of noisy thrash, smoother melodic tracks and even a cover or two.

Space was provided by the Vox, newly opened and operated by Tim Waterman. Waterman's support of the underground musical scene in Moscow has certainly been a factor in the recent resurgence of local shows and groups playing at locations other than bars. Also, the fact that this is an all ages location opens a new venue for those under 21 to frequent.

Cypher in the Snow has released a CD and two 7"s to date, available from Candyass Records. Check your local indy music retailer for ordering information.

Boys to the Back

DAVID CAMDEN-BRITTON
CONTRIBUTING WRITER



Anna May and Margaret of Cypher in the Snow.

MICRO
Movie House
230 W. 3rd • Moscow
882-2499
Admission *2.00

July 24-26
The Saint
7:00 & 9:45

July 27-29
Hamlet
7:00 only

HOG HEAVEN
HOMEMADE ICE CREAM

★ SIMPLY THE BEST! ★

DOWNTOWN ACROSS FROM THEATERS
EASTSIDE MARKETPLACE (JUST DOWN FROM KINKO'S)

NOW IN SMALLER DOSES.

THE STUDENTS VOICE

Argonaut

EVERY WEDNESDAY.

WELCOME RV FEST PARTICIPANTS!

GAMBINO'S NIGHTLY SPECIALS!
ITALIAN RESTAURANT

MON TUES WED THURS

ALL YOU CAN EAT SPAGHETTI \$4.95
2-TURN 16" PIZZA \$10.00
2-TURN CALZONE \$5.50
LASAGNA NIGHT MEAT OR CHEESE \$6.95

OR

FAMILY NIGHT 16" CHEESE PIZZA
4 SPAGHETTIS AND A PITCHER OF POP \$23.95

LUNCHEON SPECIALS DAILY!

308 W. 6TH • 1 BLOCK FROM THE SUB • 882-4545

FROM MOTORHOMES TO CLASSICS

428 1/2 Troy Hwy, Moscow, ID. (208) 883-3099

604 Bridge Street, Clarkston, WA. (509) 751-9730

MIKE'S
OWNER OPERATED FOR
MUFFLER & BRAKE SHOP
PERSONALIZED SERVICE

• Hours
• Sat 9am-3pm
• Mon-Fri 8am-5pm

• Free Estimates
• Custom Exhaust
• 20 Years Experience

• Lifetime Mufflers
• Dual Exhaust Systems
• Dynomax Turbos
• Catalytic Convertors
• 3" Hi Flo Exhaust Systems
• CV Joints
• Shocks and Struts

QUALITY CRAFTSMANSHIP IS OUR PRODUCT

GREENE'S
BODY & PAINT SERVICE

435 East Palouse River Drive
882-8535

Opinion



SHINGIRAI CHRIS KWARAMBA
REPORTER

Wild card makes better games

Dominant athletes like Dan O'Brien should be automatically selected to be on major championship teams. O'Brien, Decathlon World Champion and 1996 Olympic Gold Medalist, has been invited to participate in the 1997 Track and Field World championships.

It is a well-known fact that O'Brien did not compete in this year's United States Track and Field Championships. U.S. participants for the World Championships to be held in Athens, Greece, were picked from this event. Only the first three athletes in each event are selected to represent the U.S.

So, why give O'Brien special status? There are a couple of reasons. It was not only O'Brien's loss, but America's loss when he was not on the 1992 U.S. Olympic team.

Every athlete has a bad day. Reebok must have been embarrassed because at that time the famous Dan and Dave commercials were often on the air. O'Brien failed to clear a height in the pole vault and he was out of contention for a spot on the team.

What were the implications of this? The 1992 Olympic Decathlon competition was held without, arguably, the "world's greatest athlete."

The 1992 Olympic Decathlon competition sucked. This statement is not aimed at taking anything away from the participants who made it there. This merely raises questions about the methods used by the U.S. Track and Field Association to select athletes for major events.

Athletes should be selected on merit and consistency, among other things. The U.S. Track and Field Championships should just be an opportunity for athletes to check on their progress and assess their levels of fitness while they prepare for more important championships. Overall, seasonal performance is a more reliable performance indicator.

Athletes are forced to peak twice during their seasons. First, in order to qualify for the major event, and secondly, to be competitive at the event itself.

The U.S. has done well at major competitions in the past. Maybe even more gold medals could have been won if athletes had not been subjected to the stresses associated with making U.S. teams.

Maybe O'Brien would have won an Olympic medal in 1992, but then we will never know, will we?

O'Brien has since declined a wild card entry into the games, citing injury as his reason for doing so.

He is not the only offered one. World record holder, Michael Johnson, is another athlete who failed to compete at the U.S. Championships due to injury. But everyone knows that Johnson is probably our best bet to win gold at any major competition. If he is healthy he should be allowed to compete.

The fact that wild cards are even being offered is perhaps a sign of the times. This is not favoritism as some may put it. This is a case of very talented and deserving individuals being afforded the opportunity to test their mettle against other talented individuals. Isn't that the whole point of competition anyway?

The purpose of the World Champs is to see the best athletes in the world.

The public is not interested in seeing the wannabees, who through the bad luck of real champions are able to make the cut. The world wants to see the O'Briens and the Johnsons vying for top honors.

This is not to say that all other athletes are not worth watching, but one does get the feeling of being shortchanged when major sports championships are comprised of the not-quite-gold-medal-material athletes. If many people feel this way then the sport is in trouble.

This may seem elitist but it is in the interests of the sport in the long run to maintain public interest. People expect to see world records broken at the World Champs or at the Olympics. Sometimes the athletes who end up competing are not capable of breaking records, and in some instances may even cause some embarrassment to the people who selected them in the first place.

Wild cards are good. Their introduction has been long overdue.



Fen-Phen, weight loss misunderstood by public and Pulse

KAREN DURST
GUEST COLUMNIST

When the *Argonaut* came out last Wednesday, I was angry at the Street Pulse question and response. I looked at the pictures of the people answering the question and I said, "What do these people know about the agonies of being overweight?" How can they answer a question regarding the risks of taking a drug for weight loss? I have given the subject great thought and still feel the same way.

But to further the process, I have also done some research on the drugs Phen-fen. Let's begin with an understanding that I am overweight. Anyone who knows me will attest that I have more than 50 pounds of excess weight to lose. I have tried a lot of the fad diets as well as others such as Weight Watchers, Jenny Craig, etc. The bottom line is what works for some will not always work for others. Also, what caused the weight gain is a factor. Weight gain is not always caused by over-eating and the solution is not always pushing away from the table or just eating less. Drugs are sometimes necessary.

However, they should never be abused. Phen-fen is a combination of two drugs — Phentermine and Fenfluramine. Both medications are anorexics (appetite suppressants) that help diminish the appetite by different mechanisms of action. Phentermine has a stimulant effect resulting in decreased appetite and less frequent eating. Fenfluramine acts through serotonergic mechanisms resulting in a feeling of increased satiety. These drugs were intended as a weight loss option for those persons who are grossly overweight (at least 100 pounds).

In addition to the two drugs, however, modified diet and exercise are encouraged. Phen-fen, by itself, can not cause a person to lose weight. It must be combined with the modified (reduced, yet balanced) diet and exercise. Phen-fen is not a miracle drug!

Recently, a new complication, Valvular Heart Disease, was found to be associated with 24 women who have been taking Phen-fen for at least 12 months. Valvular Heart Disease refers to abnormalities of one of the four valves that are inside the heart and which direct the flow of blood. When one of these valves goes bad, it can lead to either insufficient blood flow to the body or result in a back pressure which may result in fluid accumulating in the lungs or lower portions of the body.

Symptoms vary from no symptoms in the early stages to chest pain, shortness of breath or swelling in the legs as the disease progresses. Although there has not been a direct link between Valvular Heart Disease and Phen-fen, pathological similarities have been discovered.

Before major panic occurs within the Phen-fen circles, one must look at the statistics of the problem. In 1996, over 18,000 prescriptions per month were written for Phen-fen. Of that number, 24 women have reported Valvular Heart Disease. That is approximately .03 percent.

As mentioned earlier, as of July 8, 1997, no direct link has been made, although there is suspicion. I have taken Phen-fen and was successful in losing 24 pounds. Although that is a long way from my ideal weight, I am taking a break. I want to re-evaluate Phen-fen. It does not mean I will stop taking it forever. I am just stopping for a few months.

One other item of note. A person must be desperate to lose weight if they are willing to take medication for weight loss. You see, insurance does not cover the cost of the doctor visits (which occur once a month). Nor does insurance cover the cost of the medication, which ranges from \$48 to \$60 per month.

I am sure everyone would agree that \$100 a month could be spent in much more entertaining ways.

Argonaut



The Argonaut is published on Wednesdays June 4-August 6 and is available on campus and in the Moscow area. First single copy free; additional copies 50¢. Mail subscriptions are \$15/semester or \$25/year. It is published by the Communications Board of the Associated Students-University of Idaho. Opinions expressed herein are the writer's, not those of the Associated Students of the University of Idaho, the faculty, the university or its Board of Regents. The Argonaut is a member of the Associated Collegiate Press, the College Newspaper Business and Advertising Managers Association and subscribes to the Society of Professional Journalists' Code of Ethics.

All advertising is subject to acceptance by the Argonaut, which reserves the right to reject ad copy.

The Argonaut does not assume financial responsibility for typographical errors in advertising unless an error materially affects the ad's meaning, as determined by the Ad Manager. The Argonaut's liability shall not exceed the cost of the advertisement in which the error occurred, and a refund or credit will be given for the first incorrect insertion only. Makegoods must be called in to the advertising manager within 7 working days.

Non-profit Identification Statement
The Argonaut, ISSN 0896-1409, is published twice weekly and is located at 301 Student Union, Moscow, ID 83844-4271.

POSTMASTER: Send address changes to the address listed above.

Michelle Kalbeitzer

Editor in Chief, 885-7825

Laura LaFrance

Photographer

Rebecca Boone

Copy Editor

Kevin Murphy

Staff

Wesley Rimel

Staff

Lex P. Levy

Staff

Shingirai Chris Kwaramba

Staff

Ryan Donahue

Advertising Manager, 885-7794

Felix Kamangirira

Asst. Ad Manager, 885-7835

Matt Ohmstede

Circulation

My Conversation With Newt

RYAN DONAHUE
CONTRIBUTING WRITER

Newt Gingrich hates the National Endowment for the Arts, but his reasoning escapes me. I'd like to talk to him about it, but he's probably too busy trying to take rights away from gay people like his half-sister. So, in lieu of a real conversation, I'll provide you with a script for a fictional one.

There's one restriction, however: in my version, Newt can't let anything but facts fly out of his NEA-detesting mouth. Here goes.

RYAN: So, Newt, you're against the federal funding of the nonprofit arts; specifically, you oppose the continued funding of the NEA.

NEWT: Yes.

RYAN: In fact, since 1993, you've voted in favor of reducing or eliminating the NEA seven separate times.

NEWT: Yes.

RYAN: And this is because, in your estimation, the NEA is a giant waste of taxpayer dollars.

NEWT: Yes.

RYAN: Please explain.

NEWT: If you review any of the widely-available facts on the NEA, you'd realize that the NEA's budget for 1997 is \$99.4 million. Since its creation in 1965, the NEA has cost the taxpayers of this country nearly \$3.6 billion.

RYAN: \$99.4 million... that's approximately one-one hundredth of one percent of the federal budget for 1997, correct?

NEWT: Correct.

RYAN: And this is a lot of money compared to...

NEWT: Well, take the military's budget, for example. In 1997, the Pentagon will receive nearly \$255 billion in federal funds.

RYAN: \$255 billion for one year. That's about 72 times greater than the total funding of the NEA since its creation, right?

NEWT: Right.

RYAN: Does the Military have to match each dollar it spends with a dollar of private donation?

NEWT: No. That's silly.

RYAN: But most NEA grants must be matched at least dollar for dollar with private donation, correct?

NEWT: Correct.

RYAN: And didn't Congress give the Pentagon \$10.4 billion more than it asked for in 1997 alone?

NEWT: Yes. Please remember that this \$10.4 billion military bonus is almost three times more than the U.S. has spent on the NEA in the last 30 years.

RYAN: Thanks for pointing that out. Now, by my calculations, and the calculations of any legitimate source that reports on the NEA, the endowment's 1997 budget of \$99.4 million breaks down to about 38¢ for every American. Is this correct?

NEWT: Yes.

RYAN: And this 38¢ generates \$37 billion in economic activity every year, right?

NEWT: Right. And don't forget that the nonprofit arts industry employs 1.3 million Americans.

RYAN: I'm glad you brought that up. Isn't it also true that these 1.3 million nonprofit arts industry employees give \$3.4 billion in federal income taxes to the U.S. Treasury each year?

NEWT: This is true.

RYAN: So, in theory, the 38¢ each American spends on the NEA each year returns \$13 to the U.S. Treasury?

NEWT: Yes.

RYAN: I don't understand how an entity that generates revenue can be a financial burden to the taxpayers of this country.

NEWT: You wouldn't understand. This is something that only Republican congressmen are able to understand.

RYAN: You're dumb.

NEWT: Yes, I am. However, you aren't talking about the socially destructive nature of some of the NEA-funded projects.

RYAN: I assume you're referring to artwork which has generated controversy because of sexual or anti-religious themes.

NEWT: Correct.

RYAN: Now, I may be wrong, but doesn't the Constitution allow people to be both sexual and anti-religious?

NEWT: Yes, it does.

RYAN: And since people are allowed to be sexual and anti-religious, doesn't that entail a freedom to express those qualities?

NEWT: I suppose. But nonetheless, sexuality and atheism are offensive to conservatives like me. And I should remind you that I am Speaker of the House.

RYAN: Indeed you are. Mr. Speaker, can you tell me the number of NEA grants that have been deemed controversial?

NEWT: Almost 40.

RYAN: And how many grants have been awarded since the NEA was created?

NEWT: One hundred and ten thousand.

RYAN: By simple division, I calculate that .036% of NEA grants have been considered controversial.

NEWT: I come up with the same figure.

RYAN: Can you sum up your opposition to the continued funding of the NEA using your controversial subject matter argument?

NEWT: Sure. I am opposed to the continued funding of the NEA because thirty-six one thousandths of one percent of the grants they award are considered controversial.

RYAN: And remind me of your financial concerns regarding the NEA.

NEWT: I am opposed to the continued funding of the NEA because the program, which operates with one-one hundredth of one percent of the total United States budget, generates \$37 billion of economic activity and returns \$3.4 billion to the U.S. Treasury each year.

RYAN: Thanks for chatting with me. I've learned a lot.

(Readers can verify all facts in this article at <http://arts.endow.gov/>)

This week, the Argonaut #1 went out and asked another two-parter: #2

Are you a Moscow citizen?
Do you know who the mayor is?



"Yes. It used to be Mayor Agidius."
—Zac Woodall

"Yes. I have no idea."
—Tony Mursters



"Yes. I don't know."
—Tiffany Farley

"Yes. I don't know."
—David Nasfell



"Yes. Technically nope."
—Brian Imhoff



"Yes. I can't help you out."
—Andra Subert

"Yes. No, I voted in the last election, though."
—Clint Dustin



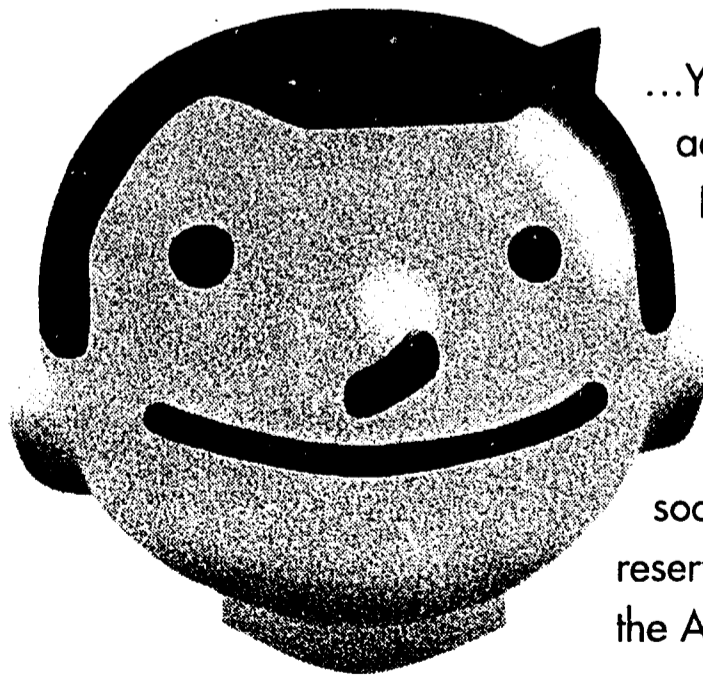
"Yes. His name is Agidius."
—Cy Hopkins



"Yes. Actually, no, we just moved here."
—Jacki Forhees

SUMMER PULSE

IT'S NOT TOO LATE...



...You can still reserve your advertising space in the Freshman Orientation Issue of the Argonaut if you act fast! We'll be mailing this special issue to all 2,300 incoming freshmen very soon. Call **885-7794** to reserve your advertising space in the Argonaut today.

RATES

OPEN RATE = \$6.70 PCI... FULL PAGE = \$536... HALF PAGE = \$268... QUARTER PAGE = \$140.70

CAMPUS RATE = \$4.95 PCI... FULL PAGE = \$396... HALF PAGE = \$198... QUARTER PAGE = \$103.95

ANY SIZE OF AD IS AVAILABLE...CALL FOR RATES

CLASSIFIEDS

RATES, POLICIES, & INFORMATION

RENTALS

Call Today! We have spacious, economical and reasonably priced 1, 2, and 3 bedroom apartments with locations to suit your needs. One bedrooms from \$299/month; Two bedrooms from \$379/month; Three bedrooms from \$449/month. Come see your new apartment before someone else does. **Apartment Rentals 1122 E. 3rd St. #101A Moscow 208-882-4721. M-F 10:30-12, 1-5:30**

2 BDRM, near UI, DW, laundry on-site, w/d hookup, no pets, N/S, available now, Aug. lease, deposit, last mo., \$455/mo., 882-4190.

FOR SALE

1972 12x50 Lamp Lighter Trailer. New carpet, vinyl, appliances, good condition \$11,500/OBO. Call 883-4599.

SEIZED CARS from \$175. Porsches, Cadillacs, Chevys, BMWs, Corvettes. Also Jeeps, 4WDs. Your area. Toll free 1-800-218-9000. Ext. A-3881 for current listings.

Cool off with swamp coolers, \$50 a piece or both for \$75. Call 883-2899 and ask for Michelle. Leave a message if no one answers.

Trailer for sale, 8'x32', walking distance from campus, 883-0752.

Need a graphing calculator this fall? Buy one for \$30. It's only been used twice. Call 883-2899 and ask for Michelle. Leave a message if no one answers.

Truck shell. Fits long-bed Toyotas. Black, tinted windows, slider. Nice! 883-8061 pyle911@uidaho.edu

TV (color, 13", w/remote control) & VCR (w/o record) & fan for \$80/OBO. Ask for Bai at 85-2746 or 882-3272 before 7/25.

EMPLOYMENT

NEED A SUMMER JOB? BE YOUR OWN BOSS

Make \$15-30 per hour. No selling, no phoning. Choose your own hours. \$195 investment in materials and know-how. Simple skill involved. Call or write (206) 933-9645 / 3033 California Ave. S.W. #114, Seattle, WA 98116.

\$1500 weekly potential mailing our circulars. For info call 301-845-0475.

SERVICES

ATTENTION ALL STUDENTS! GRANTS, SCHOLARSHIPS, AID AVAILABLE FROM SPONSORS! NO REPAYMENTS, EVER! \$\$\$ CASH FOR COLLEGE. FOR INFO: 1-800-243-2435.

Tutoring for Math, Stats, Chemistry, Biology, Accounting & Economics at **Math Solutions, 334-2492.**

ANNOUNCEMENTS

Heavenly Hunks of Tampa Bay. Entertainment for women. Strippers etc. Hunk Hotline, 332-3608.

MISCELLANEOUS

New 9 Month Program! MOSCOW SCHOOL OF MASSAGE

Have you considered a career in health care? We offer rigorous coursework, training & preparation for state licensure and National Certification in Massage Therapy. Nine month program starts September. Classes meet Tuesday & Thursday and 1 weekend / month. Tuition \$4,500. Class is limited to 24 students. Enroll now to ensure your place as class fills early. **Call MSM Inc. at 208-882-7867 for more information.**

RATES

OPEN RATE **.20¢ PER WORD**

FREQUENCY RATE
(4 or more consecutive insertions)
..... **.15¢ PER WORD**

STUDENT RATE
(must show valid student ID)
..... **.15¢ PER WORD**

BORDER CHARGE
(one-time charge)
..... **\$.25 PER AD**

DEADLINE for classifieds is noon on Tuesdays. Call **885-7794** to reserve your space.

POLICIES

Pre-payment is required unless you have a business account. No refunds will be given after the first insertion. Cancellation for a full refund accepted prior to the deadline. An advertising credit will be issued for cancelled ads. Pre-payment discounts do not apply to classified advertising. All abbreviations, phone numbers, and dollar amounts count as one word.

Notify the Argonaut immediately of any typographical errors. The Argonaut is not responsible for more than the first incorrect insertion.


VISA, MASTERCARD, AND CHECKS ARE ACCEPTED.


SPEED BUMP BY DALE COVERLY



ANOTHER CONCEPT ELUDES RAY







89.3 MHz

