

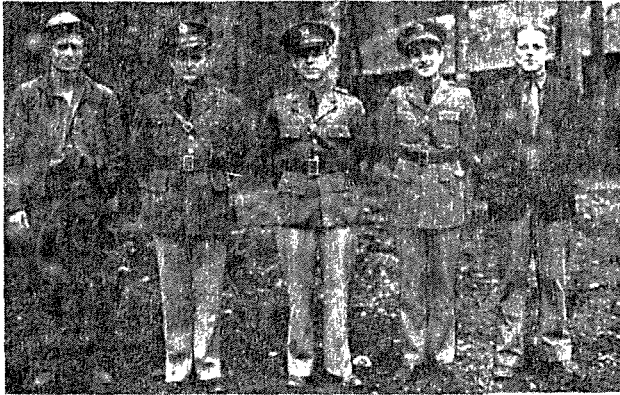
The Fort George Wright District
Civilian Conservation Corps
ANNUAL
1937

Dedicated to
Colonel Walter Scott Drysdale
District Commander

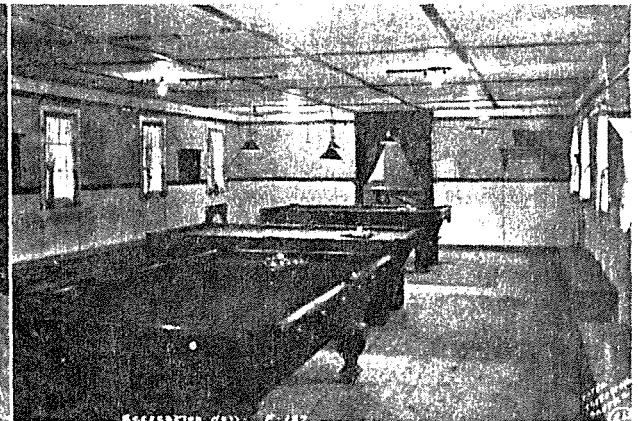
Published by the Fort George Wright District
Civilian Conservation Corps
Fort George Wright, Washington

Capt. J. M. Gleason, Ch-Res., Editor
Paul T. Miller, Assistant Editor
A. E. Forde, Staff Photographer

Cover photograph by courtesy of U. S. Bureau of Reclamation



E. D. Nieland, Camp Superintendent; Captain W. A. Chabert, Inf-Res., Commanding Officer; 1st Lieut Cyril E. Rozea, Inf-Res.; Captain Felix S. Bambace Med-Res., Camp Surgeon; Paul T. Miller, Educational Adviser



George Wood, George E. Hinch, Asa Hayter, Lionel L. Swope, Robert Varner



Company History

Company 1239, now at Tin Can Flats, Camp F-187, Captain W. A. Chabert, commanding, was organized at Fort Slocum, New York, June 10, 1933. Captain William Tenney was the company's first commander. Men comprising the original roster of 47 came from six other companies—202, 205, 206, 272, 273, and 1231.

This cadre left Jersey City for the Corral Creek camp at Tuolumne, California, going by way of Fort Lewis, Washington, and Sacramento, California. This camp was occupied June 18, 1933.

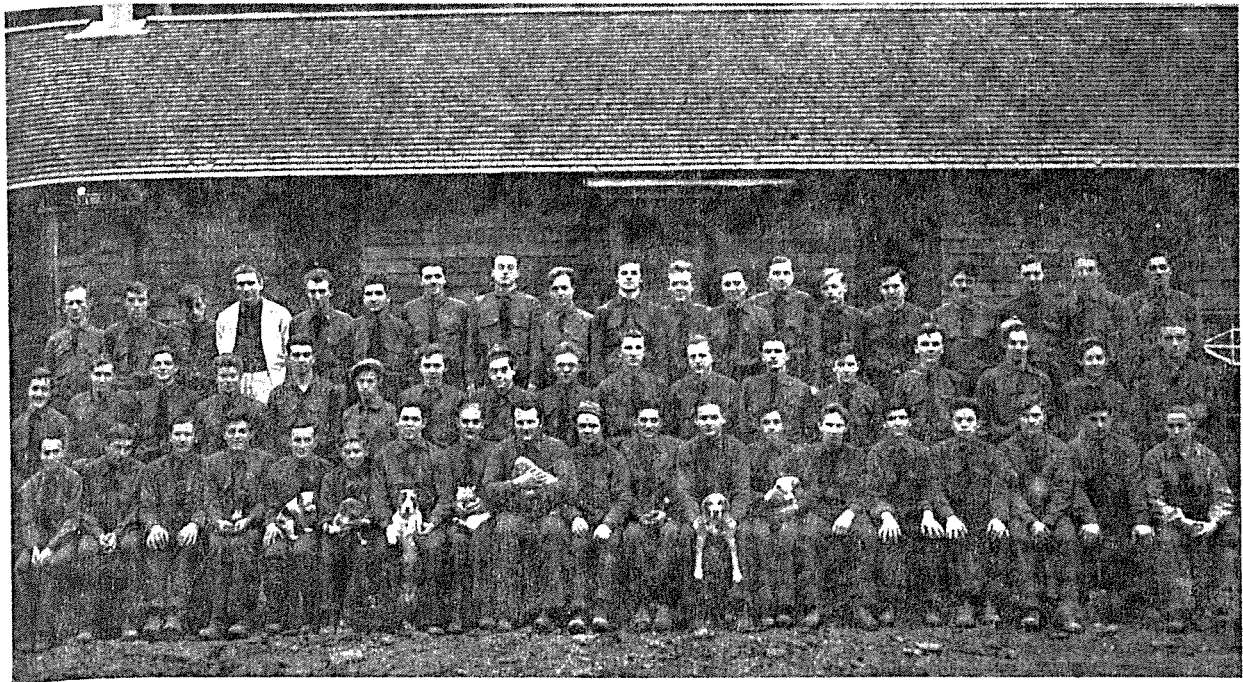
Subsequent locations: November 15, 1933, Camp F-215, also at Tuolumne; April 20, 1934, Camp F-140, Clarkia, Idaho; November 4, 1934, again at Camp F-215, Tuolumne; May 1, 1935, Camp F-187, Turner Flats, 10 miles above Avery, Idaho; October 14, 1935, present camp occupied—still F-187, but at Tin Can Flats, 2 miles above Turner Flats. It is now known as the St. Joe River camp.

Sequence of company commanders: Capt. William Tenney; 1st Lt. F. J. Bennet; 1st Lt. H. G. Miner; Capt. W. M. Orem, May 1, 1935 at Turner Flats camp; 1st Lt. Joseph F. Delaney; 1st Lt. W. A. Lauri; 1st Lt. Edwin H. Toney; Capt. Gordon T. Fish; Capt. Gragg Richards; 1st Lt. John W. Cowan; Capt. E. G. Rudd; Capt. Elmore G. Smith; 1st Lt. Cyril E. Rozea; Capt. Victor G. Baddock; and Capt. W. A. Chabert, since October 25, 1937.

Other officers and contract physicians assigned during the time that Company 1239 has been at Tin Can Flats: 1st Lt. Wm. H. Fowler; Ensign W. Colbert; 1st Lt. F. L. Dutton; 1st Lt. Danial Daly; 1st Lt. Virgil Estes; D. D. Davis, M.D., and T. V. Hynes, M.D., both contract physicians; and these members of the Medical Reserve Corps—Salvatore J. Guardino, Samuel D. Berke, M. A. Swanson, J. J. Manfredi, Isadore Meyers, Abraham Riemer, M. L. Strong, M. C. Beecher, Michael Diacovo, all 1st Lieutenants; Capt. Meyer Hantman, and Capt. Felix S. Bambace, the present camp surgeon.

Educational advisers assigned since company has been on St. Joe River: Claude B. Fancher, C. M. Chilson, Ray T. Cutter, and Paul T. Miller.

Upon arrival of the company at Turner Flats, a tent camp was set up while the men were building the present camp at Tin Can Flats. There was no road to the new site, and much of the materials had to be placed on rafts and pulled by horses up the river. Other loads were brought in by pack mules. By working consistently against hardships of that nature, the men of Company 1239 have built a camp of which they are justly proud, and in doing so they have earned an enviable reputation.



Front Row—Aigner, Beebe, Kziazek, Oleyourryk, Mansfield, Porebski, Oliker, Pieszalski, MacDonald, Davidowski, Bongiorno, Obrenski, Latona, Dugan, Masella, Kocyla, S. Spisjak, Fiegl, Roesinger. Second Row—Harlukiewicz, Fallstrom, Giermek, R. Faulhaber, Berg, Hopf, Lawrence, Leahey, Pawlowski, Karaszewski, Labacz, Pinto, Gallagher, Pikulinski, Nacion, Opperman, Bergeman. Third Row—Kiec, J. Spisjak, Downs, Sheehan, Aldinger, Cusano, Navigante, Burr, Grabb, Ladouceur, Kinnaman, Sacco, Reinhart, Chowanec, Gerstner, Fessler, Dittenhofer, Rush, Parapatis

Work Project

Building a road from Avery up the St. Joe River has been the main work project for every company that has been located on the river above the North Fork.

Company 744 began the operation in June, 1933, using Turner Flats as a base camp, and maintaining a spike camp at Packsaddle Creek. Road work began about two miles above Avery, and hence building materials for the Turner camp were brought in by pack train and up the river by sleds which were dragged by horses through the water.

October, 1933 until spring of 1934, Company 744, located at Camp F-120, Avery, maintained a 44-man spike camp at Turner Flats. They did much heavy rock work, and finished almost a mile of road above their spike camp. No more work was done on the road until the arrival of Company 1239 at Turner Flats, May 1, 1935, with C. A. Gregory as camp superintendent.

In the summer of 1935 many of the men worked on the construction of the new camp at Tin Can Flats, but the road work went right along also. And so Company 1239 can and does claim the major share of the credit of pushing the road up the river, for they built from the 10-mile to the 25-mile mark above Avery. At this point the road was joined with the completed upper project done by the Gold Creek camp on October 20, 1937. Mr. Gregory was superintendent until June 17, 1936, when he was replaced by E. D. "Bill" Nieland, present superintendent.

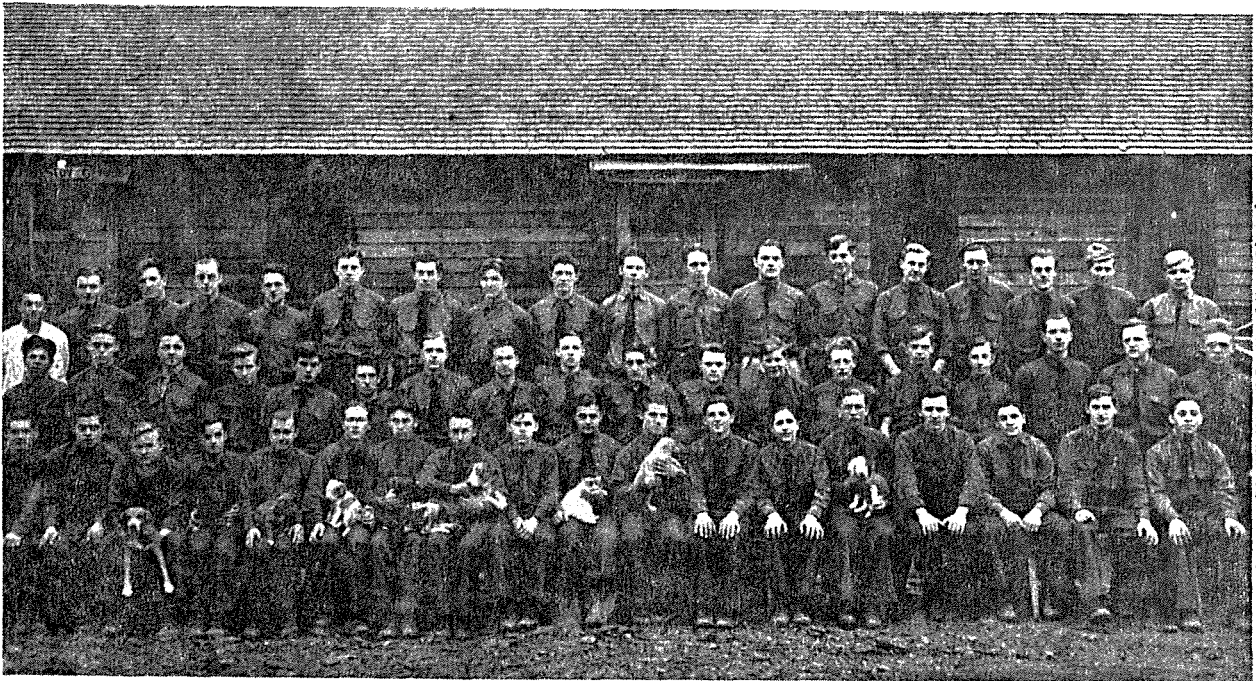
Importance is given to this road in the matter of fire control and recreational use when it is considered that it now connects with the upriver road and the pass road over into Montana and on to Missoula. Much good merchantable timber has also been opened up for logging.

In their road building the men of Company 1239 have used tons of dynamite to move the many rock cliffs. Concrete bridges have been put over Bird, Eagle, and Quartz Creeks, and several culverts have been placed on other creeks.

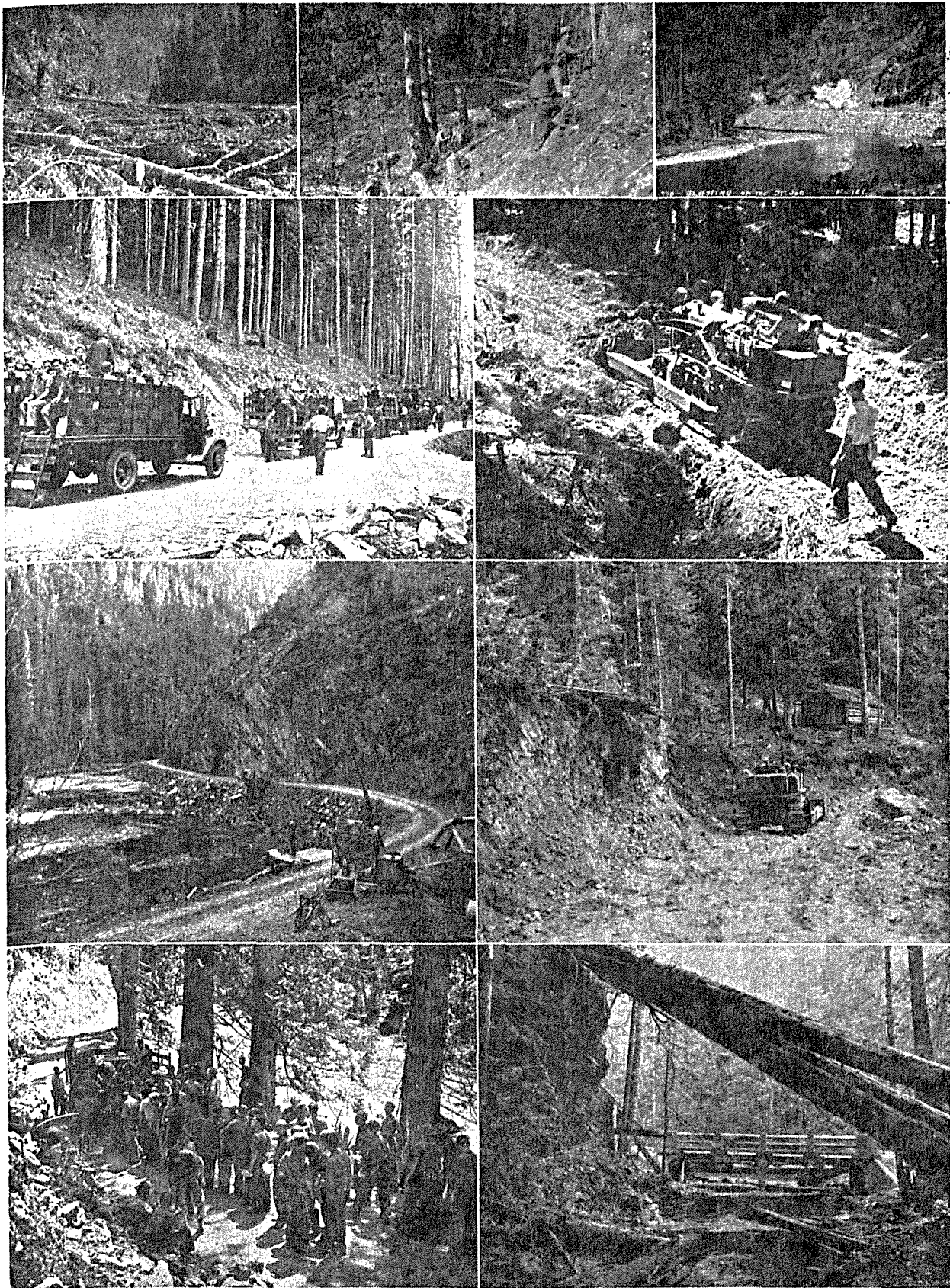
Other projects: Trail maintenance and the building of new trail, construction of the Turner Flats suspension bridge, and the cutting of fire wood for the camp.

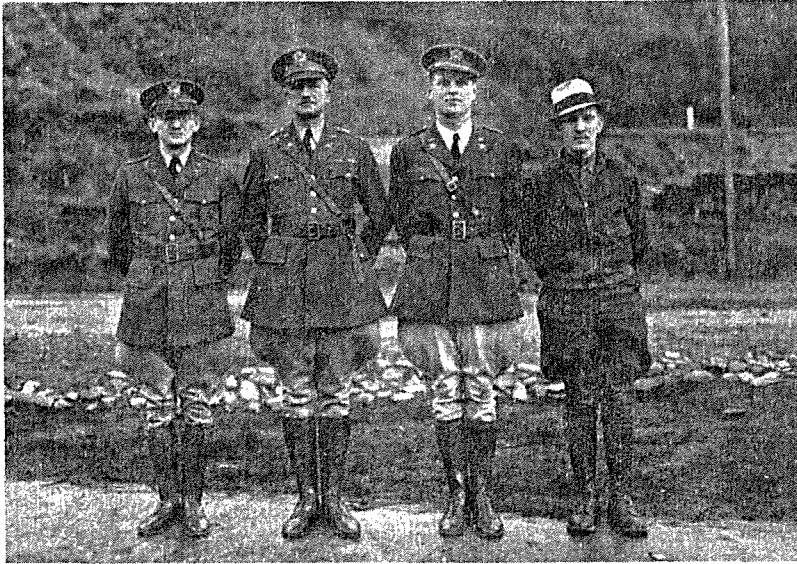
Right now the 1239 men are working from Turner Flats toward Avery on a project to widen this 10-mile stretch to 18 feet, all to be graveled. In the future this type of improvement perhaps will be carried on up the river road.

Other future projects are the 6 miles of Bird Creek truck trail to join the spur road from the State Line road at Mirror Point, the planting of trees over several hundred acres, the construction of a few new bridges and the improvement of others. A road is tentatively planned to go a few miles up Sisters Creek, necessitating a bridge over the St. Joe River.



Front Row—Aiple, Wetmore, Forbes, Sorra, Apel, Burnett, Fultz, Aigner, Bird, DiGiore, Kostar, Gernek, O'Connell, Payne, Hertel, Connitto, Goldstein, Chinnici. Second Row—Chilinski, Shephard, Choma, Bradzi, Campbell, Broadwell, Klee, Fiume, Cavanaugh, Salerno, Mungay, G. Faulhaber, Gilbert, Lewandowski, Sowinski, Hergula, Labacz, Pieszalski. Third Row—Todaro, Ahart, Kaczmarczyk, Jackson, Hogan, Quinn, Parvott, Sweeting, Hynes, O'Malley, Loding, Roettger, Dombrowski, Dalgleish, Hooser, Hejmanowski, Gardner, Converse





Captain Meyer Hantman, Med-Res., Camp Surgeon; 1st. Lieut. Arthur A. Frambach, Inf-Res., 307th Inf., Commanding Officer; 2nd. Lieut. Arthur Adamson, CA-Res., 502nd. C.A.; Frederick S. Rhodes, Educational Adviser

Company History

On June 22, 1933, Company 257, after a month's conditioning at Plattsburg Barracks, New York, established its first home in tents at Goldsmith, New York. Late in the fall the company moved to White Face Inn and in the summer of 1934 to Calls Corner, a mile and a half west of Lake Placid, New York, living in tents until the barracks were completed in November.

On October 10, 1937, Company 257 entrained at Lake Placid for the West, arriving at Marble Creek, Idaho, in the St. Joe National Forest on October 13.

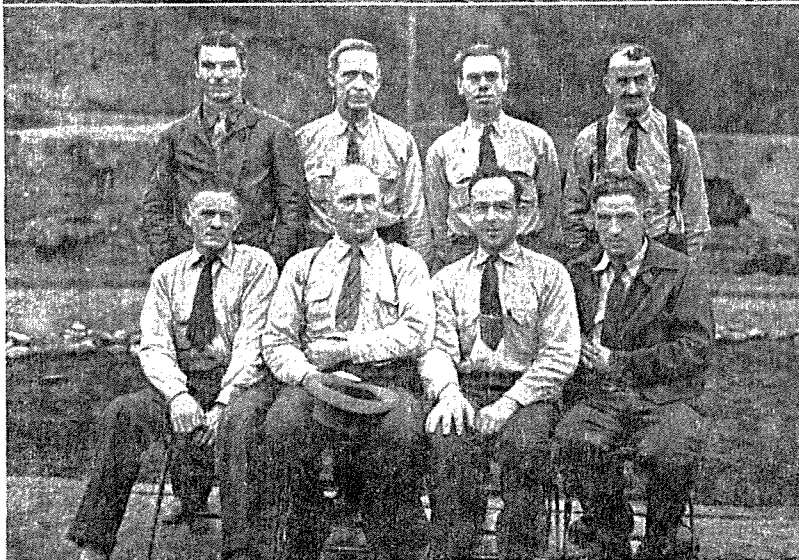
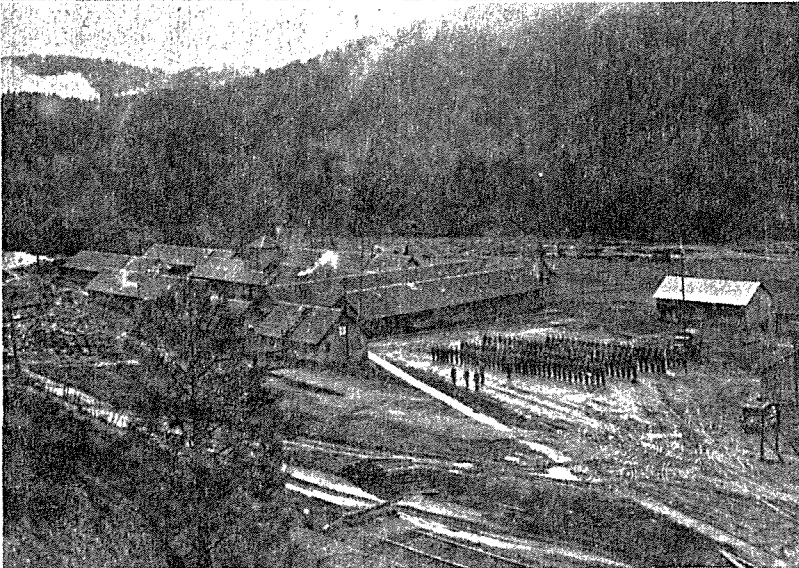
At the time Company 257 moved to its first camp it was under the command of Captain W. S. Tuttle who was replaced by Captain W. H. Waugh in July, 1933. In January, 1934, Captain Francis B. Redner assumed command and was replaced by Captain W. E. Campbell in March, 1934, and was in turn replaced by Captain Edward McGall in July, 1935. The present company commander is Lieutenant Arthur A. Frambach.

John F. Paul, the first camp superintendent, preceded the company to Goldsmiths, and was in charge of the projects until February, 1936, when Chester Yops replaced him.

The main project was forest fire control which consisted of building a telephone line to the summit of Whiteface Mountain. Additional projects tended to open the Adirondack Forest to the enjoyment of the public. Much work was done on the famous bobsled runs and ski trails.

Front Row—*Jack Benton, Edward Burns, Assistant Superintendent; Lloyd Chilton, George Irwin*

Second Row — *Walter Babinski, Charles Feary, John Williams, Paul Perry*



Front Row—*Feltt, Latour, Blaise, Hazen, Denton, R. Seney*

Second Row—*Parker, Colangelo, Gonyea, F. Betters, Deresky, Rango, Jewels, Kozar, Field*

Third Row—*Newman, Chester Goddette, Clarence Goddette, J. Lawrence, Bruce, A. Parent, Raymond Miller, Willette*

Fourth Row—*Manzo, McElhearn, Zatchy, Doyle, Edverds, Belmore, Stevens, Uvino, Lucas, Peskin*

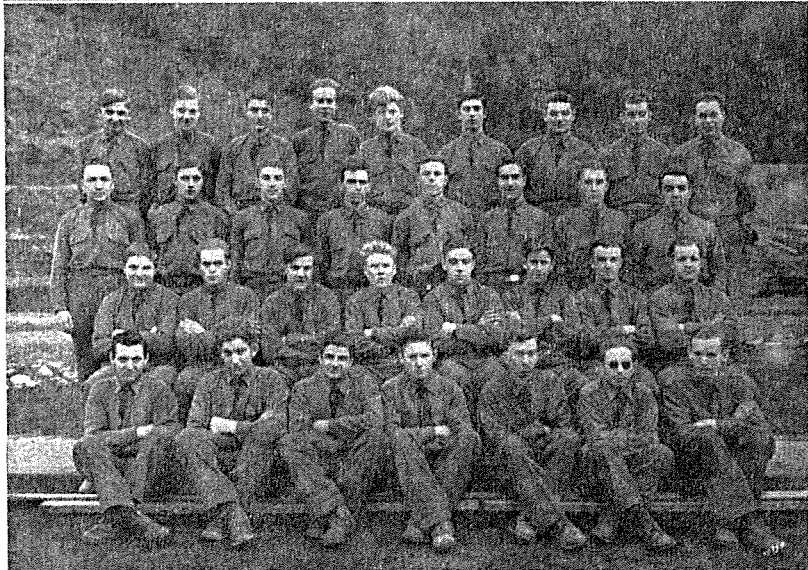


Front Row—*Husereau, Ross, Termine, Gursky, Rist, Stacy, Williamson*

Second Row—*Pucciano, Williams, Silcox, Rostek, Rocco, P. Poulette, Scupien, Treadway*

Third Row—*Weber, Zdanowicz, Wierzel, Simonetti, Sager, Zuccala, Tuško, Silaco*

Fourth Row—*Wroblewski, Schafjer, Young, Reynolds, Drexler, Weir, Tzerman, Vitello, Wood*



Front Row—*Kanaly, W. Poulette, Peryea, Peryer, Bolia, Gaeta, Jerkovich*

Second Row—*Mazarro, Lawlor, Grimaldi, Marrs, DiBiase, F. Parent, Gilroy, Norris, Hicks*

Third Row—*Robert Miller, Lagoy, McMahon, Peacock, Morancy, Gerish, Mena, Greene*

Fourth Row—*Klepeis, L. Lawrence, Fitzgerald, Lester, Hobbie, Headlee, Montemurro, J. Miller, Garrow, Nueslein*



Work Project

When Company 257 arrived in its new camp, Camp F-117, Marble Creek, Idaho, it started to work on October 18, 1937, under the able supervision of Ben Bates, camp superintendent. The Donkey Creek bridge was started on the above date and made such amazing progress that it was finished by November 26, 1937. This bridge was built to shorten the distance between Marble Creek and Donkey Creek.

Another project is the Marble Creek Road which they are widening for the prevention of forest fires and for better road travel. The wood detail is another project and is very important because of the fact that wood is the only available fuel for the stoves in the various build-

ings. This is a dangerous but thrilling job because the men have learned to do it safely. This detail consists of cutting down trees, sawing them into logs and rolling them sometimes down steep slopes where other enrollees cut them smaller, and load them on a truck which takes them to camp.

The main project which has not as yet been started is the St. Joe River road. Work will be started on this project in the very near future. It is to be a 25-foot road, built on a water grade 10 feet above the high water mark. This road will be built under the Bureau of Public Roads for the use of the forest administration and for the public.



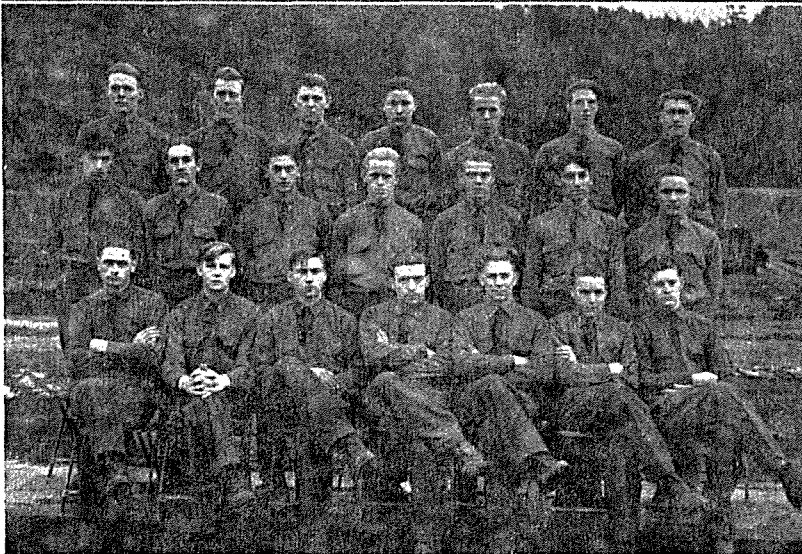
Front Row—Sally

Second Row—Burstynski, Carapola, Christopher, Annis, C. Betters, Coon, Cooper

Third Row—Demarinis, Norton, Domovich, Davida, Catalano, Aliquo, Brooks, D'Aquino, Brandon

Fourth Row — Case, Campione, Blake, Azzurro, Deubel, Donza, Fowler, Dean, Chase

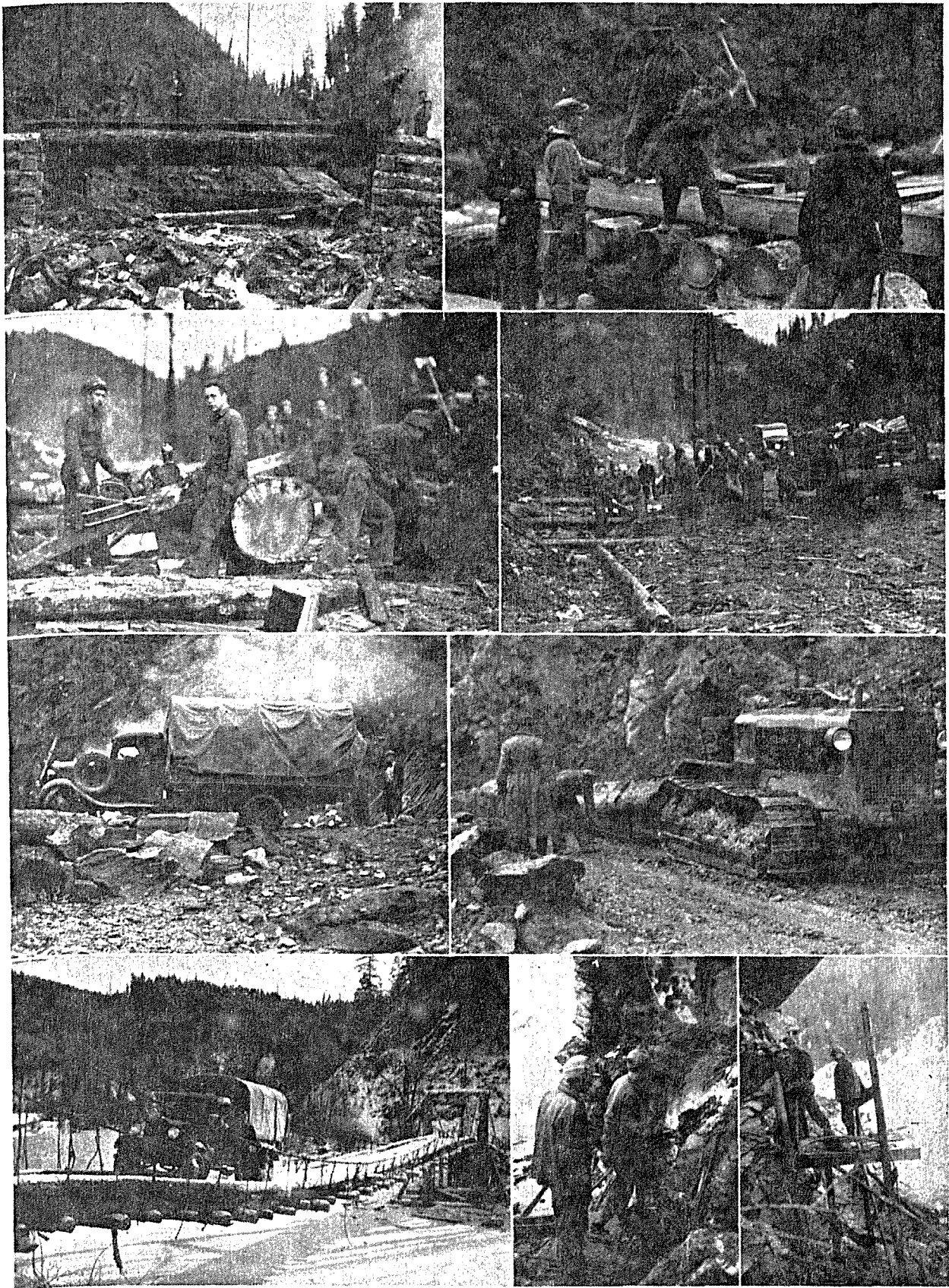
Fifth Row—Buchta, DiBona, Arre, Cohen, Barrett, Feit, Desautels, Carpenter

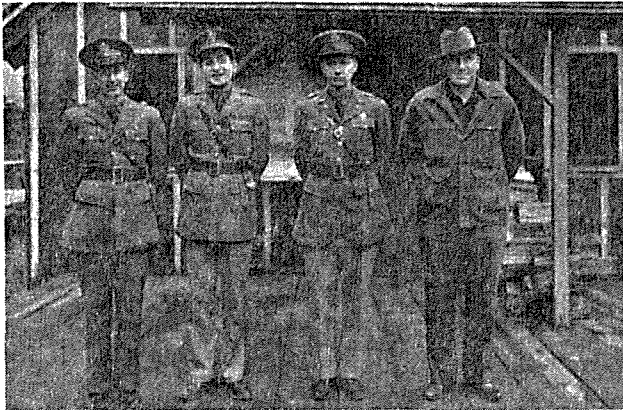


Front Row—Burlingame, S. Fifield, Hargett, Stranahan, La Piere, Morhous, Caza

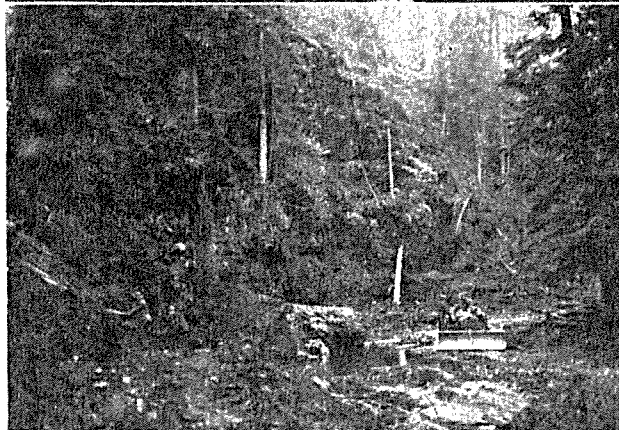
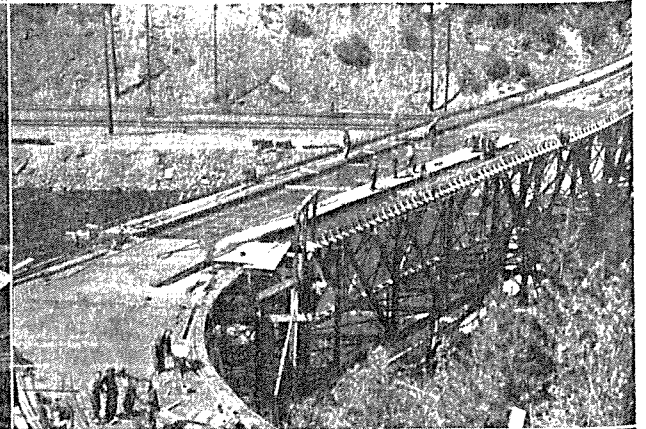
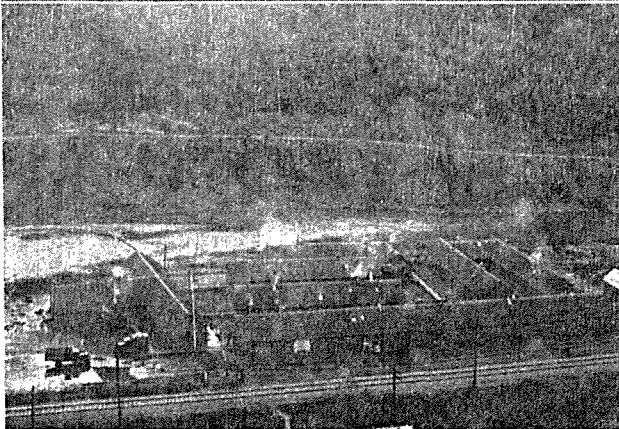
Second Row—J. Cumm, La Mountain, R. Cumm, Austin, Hosmer, Hellinger, D. Fifield

Third Row—Childs, F. Seney, Mandy, Darrah, Clements, Duclos, Bryan

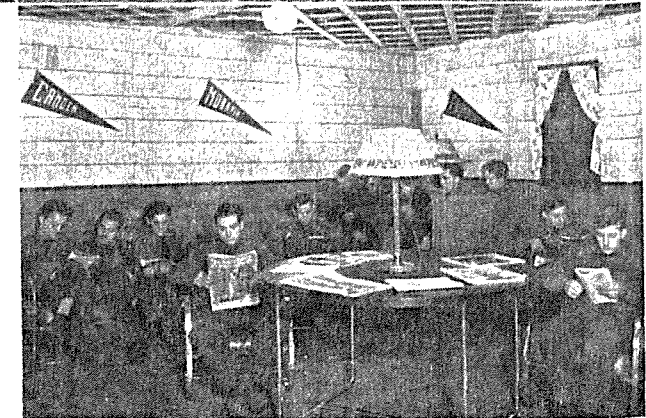




*1st Lieut. W. A. Gies, Inf-Res., Commanding Officer;
 Capt. Felix S. Bambace, Med-Res., Camp Surgeon;
 2nd Lieut. Robert W. Molloy, CA-Res.; Charles A.
 Gregory, Project Superintendent*



*View of Camp F-120
 Work in Fishhook Canyon
 Avery Bridge under construction
 Detail cutting wood for camp
 A library corner*



Company History

On May 18, 1933, Lieut. J. S. Saver of Fort Ontario, Oswego, New York, organized CCC Company 1204 with 45 men.

May 25, 1933, Capt. Raymond D. Willis was assigned, joined and took command, relieving Lieutenant Saver. The company then moved to Camp 29, Mexico Point, Mexico, New York, on June 16, 1933. Major William P. Kelleher took command of the company on June 21, 1933. The company moved from Mexico Point to Selkirk Shores November 16, 1933.

The next crucial moment came on October 10, 1937. The company had received definite orders that they were going to move to the Fort George Wright District of Washington in the Ninth Corps Area. The company

entrained at Pulaski, New York, October 10, 1937, and arrived at Avery, Idaho, October 13.

During the history of the company there has been such a rapid turnover of officers that we will mention only those most spoken of by the old members left in 1204. Capt. Frank A. Rohrs, assigned to 1204, October 2, 1933; 1st Lieut. George R. Cullman, assigned, December 7, 1933; Capt. J. H. Baker, assigned, May 22, 1935; 2nd Lieut. R. Hudson, assigned, November 5, 1935; and 2nd Lieut. Henry MacDermott, assigned, July 3, 1937.

October 4, 1937, 2nd Lieut. Robert W. Molloy was assigned to Company 1204 as mess officer.

1st Lt. William A. Gies has been company commander since January 27, 1936.

Front Row—*Sikorski, Williams, Taylor, Torbus, Stevi, Swift, Wallace*

Second Row—*Dixon, Semerski, Fyda, Bisnett, Stuber, Martens, Koon, Johnson*

Third Row—*Porter, Fedele, Spirrow, Bosti, Byers, Cooper, Minutaglio, Roziocik, Terejko*

Fourth Row—*Hoffman, Cusick, Gasparino, Seamans, Triassi, Beach, Pollock, Konowalczyk, Sparano, Simonsick, Narosky*



Front Row—*Feeney, Doyle, Andrews, Fyvie, Dingsfelder, Bulavinetz, Caccamise, Forest, Diak*

Second Row—*Fedele, Cannavino, Ferrara, Barch, D'Amato, Dombrowski, Davis, Beecher, Bonnell*

Third Row—*Fox, Gallina, Chludzinski, Finley, Friz, Elkin, Beck, Fagella, Branshaw*



Work Project

Project work done by the CCC companies occupying Camp F-120 has been marked by the completion of much difficult and significant construction.

In October, 1933, Company 1744 arrived and built several miles of the road down the St. Joe River, and later did the preliminary work on the Avery bridge which spans the St. Joe. Company 1991 completed the big task of making a real good job of this piece of major construction.

Company 2525 improved the river road and began the long job of putting a truck trail into the large stand of merchantable white pine timber which lies along Fishhook Creek. This creek flows into the St. Joe about a mile below camp.

Company 4797 came in October, 1936, and worked on the North Fork of the St. Joe road, and the Fishhook projects. Company 4797 also did the most of the construction of the Forestry shop buildings which are across

the river from camp. At the Avery Ranger station they also put in many man-days on general construction and maintenance work.

Company 1204 arrived October 13, 1937. These boys have the Fishhook road as a main project. Some crews are also doing maintenance and improvement work along the road which goes up the North Fork of the St. Joe River and thence to Wallace.

In addition to the above specific projects Camp F-120 companies have put in hundreds of man-days on various types of work for the Avery Ranger district.

Future projects include continued work on the Fishhook road, and major improvement work on the road down the river from camp.

The two most recent camp superintendents of F-120 are E. D. Nieland, and C. A. Gregory who has been in charge of all projects since June, 1936.



Front Row — Mancuso, Godici, Mancine, Mazza, Gugliandro, Mack

Second Row—McKeon, Madigan, Lacagnina, Katz, Masuicca, Kliss, Hickey, Mastrodonato, Hess

Third Row—Horba, Shostak, Cassidy, Lehtinen, Hepburn, LaVere, Gleason, Laird, Longo

Fourth Row—Konopa, Kazmerski, Kiesa, Lowe, Ladouceur, Kerney, Koczan, Hall, Mathews, Jenkins



Front Row—Polino, Tucciarone, Razzante, Smithe, Rivera, Ross

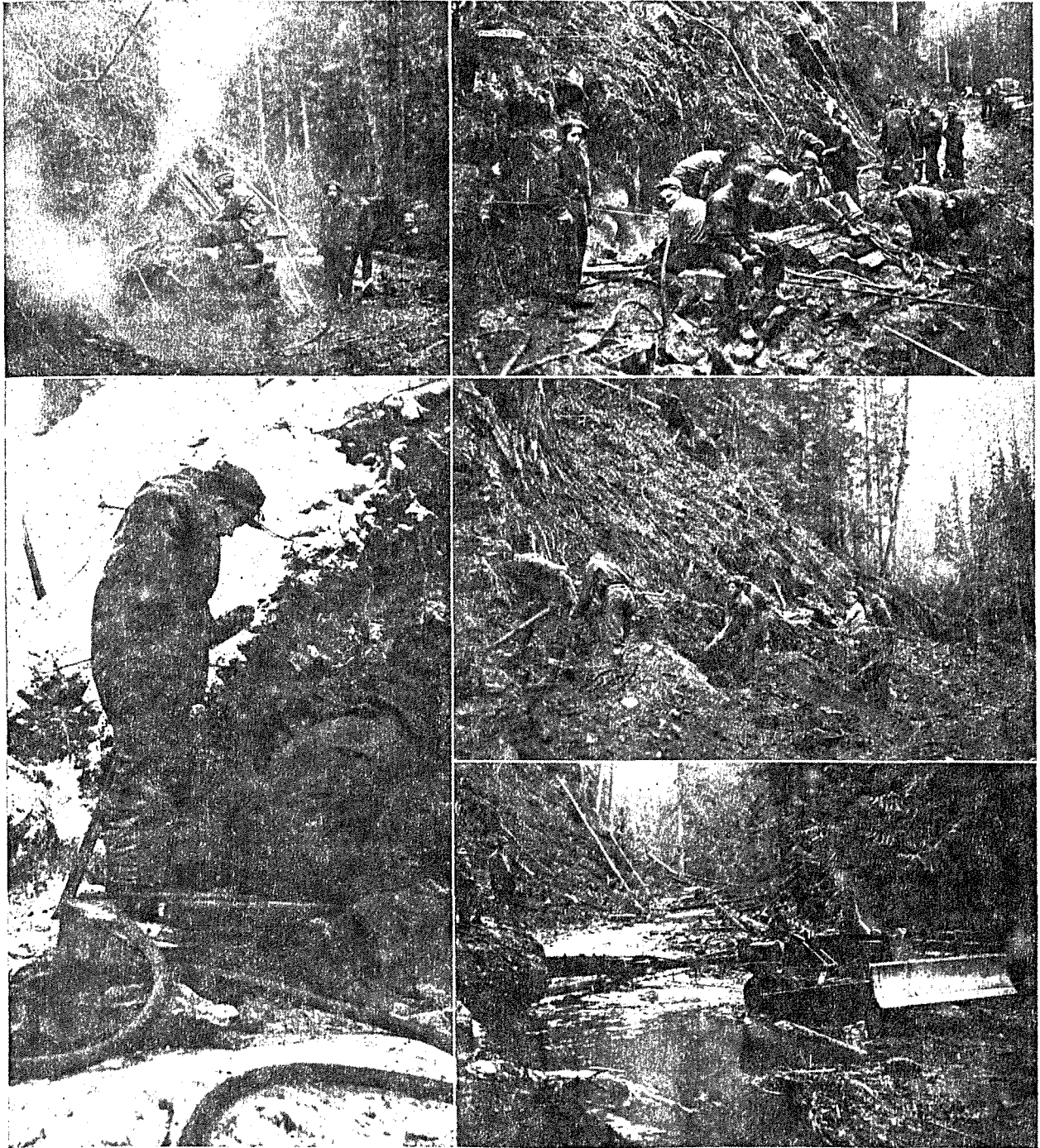
Second Row—Arthur Perri, James McCabe, Joseph Peto, Radwinsky, Pizzi, Montano, Roberger, Pietroski, Moss

Third Row—Orrico, Croce, Hyla, Pratico, McGarvin, O'Hara, Neivel, Mis

Fourth Row—D. McCabe, Therese, Rzepka, Romanick, Roy, Nowicki, Boyzuck, Quercia, Messita

Typical St. Joe River Work Scenes

If ever there is work to be done, these sturdy lads—CCC members who have toiled to complete difficult road and bridge building projects in the rough St. Joe River area—will be there and ready. The story below in picture is similar to the heavy work activities of any of the river camps.



Michael Sampson

Copied: 21 July 1980

Information on Civilian Conservation
Corps (CCC) camps in Avery
District.

Books from which the information was
copied were borrowed at Holland Library,
Washington State University (Pullman).