

United States  
Department of  
Agriculture

Forest Service

**Intermountain  
Region**

September 2006



# George Lee Nichols

**Regional Architect, Region 4**



By Kathryn Burnside, Historian

# Table of Contents

<b>INTRODUCTION.....</b>	<b>3</b>
<b>BIRTH AND EDUCATION .....</b>	<b>3</b>
<b>WORK PRIOR TO THE FOREST SERVICE.....</b>	<b>5</b>
<b>JOINING THE FOREST SERVICE .....</b>	<b>6</b>
<b>SPECIAL ASSIGNMENTS .....</b>	<b>8</b>
REGIONAL HEADQUARTERS .....	8
ARCHITECTURAL STANDARDS FOR REGION 4.....	10
MILITARY BUILDINGS.....	13
FLOATS AND DISPLAYS.....	14
WORK FOR OTHER REGIONS.....	17
<b>SPECIFIC CONTRIBUTIONS.....</b>	<b>18</b>
HANDBOOKS AND MANUALS .....	18
DOCUMENTATION AND PHOTOS .....	19
<b>AFTER RETIREMENT .....</b>	<b>19</b>
NARCE .....	19
AWARDS & MEMBERSHIPS.....	21
OTHER NOTABLE WORK .....	21
<b>CONCLUSION .....</b>	<b>22</b>
<b>APPENDIX - STANDARD PLANS.....</b>	<b>23</b>
<b>APPENDIX B: WSU SPECIAL COLLECTIONS.....</b>	<b>36</b>
MS 78, GEORGE NICHOLS COLLECTION .....	36
MS 133, GEORGE L. NICHOLS ARCHITECTURAL/MECHANICAL DRAWINGS COLLECTION .....	40
<b>BIBLIOGRAPHY.....</b>	<b>55</b>

*For copies of this report or more information, contact:*

*Richa Wilson, Regional Architectural Historian  
US Forest Service, Intermountain Region  
324 25<sup>th</sup> Street  
Ogden, UT 84401  
801-625-5704  
[rwilson@fs.fed.us](mailto:rwilson@fs.fed.us)*

## Introduction

Known for his significant contributions to the architectural identity of Region 4, George Lee Nichols spent thirty-two years in service to the USDA Forest Service. He started as a draftsman and eventually became the regional architect. His life story, including his career, is marked with an untiring work ethic, and the talent and dedication to serve in many varied capacities. Thankfully, Nichols was a conscientious record keeper. The George Lee Nichols Collection at Weber State University's Stewart Library is an invaluable source for understanding Nichols' young life and the accomplishments he achieved as an adult. The scope of this work is an overview of the life and work of Nichols using the collection materials (see Appendix B), Nichols' personal history and scrapbooks, published sources, R4 Engineering files, and personal interviews with people who knew Mr. Nichols.

## Birth and Education

Born July 5, 1896, George Nichols was the oldest of five children belonging to Edward and Irene Lee Nichols. The Nichols family resided in Salt Lake City where George grew up and attended local schools. He was called "Nick" by his friends and known by this name as an adult working for the Forest Service. It is interesting to note that George's father and grandfather built homes in the Salt Lake area for a living. George worked with them and gained skills he would use throughout his life.<sup>1</sup>



Edward Nichols Family with George in center

Nichols began working at the age of twelve in order to put himself and his siblings through school. He began as a miner's helper in Central Utah during the summer months and a telegram carrier for the *Salt Lake Tribune* during the school year. He also worked as a clerk, an assistant bookkeeper, and for his father in construction. At age eighteen, Nichols took a year off from school in 1914 and 1915 to work for his father. In order to graduate from high school, he made up the missed schoolwork by attending Hoover's Business College at night during 1915.

This allowed him to graduate from West High School in 1916 at the age of twenty.<sup>2</sup> The caption under his yearbook photo states he studied mechanic arts. He was also the secretary of the chemistry club and a member of the orchestra.<sup>3</sup>

<sup>1</sup> Annette Nichols Gossette, telephone interview by author, 18 August 2006; and Obituary, *Standard Examiner* (Ogden), 10 May 1972.

<sup>2</sup> "Personal History and Family Record of George Nichols, 1952" p. 18-19, in possession of Nancy Nichols Moyes.

The Nichols Collection at Weber State University (WSU) bears evidence of his early education. Several mechanical drawing plates dated 1912 to 1915 include perspective diagrams, lettering samples, masonry symbols, gearing diagrams, and other related drafting exercises. In addition, there are undated geometric figures that may have been drawn for a geometry class. Nichols' chemistry notebook from 1915-1916 contains hand-drawn experiment diagrams that demonstrate artistic ability with a definite linear influence. Nichols obviously had innate talent from a young age, which aided him in his classes and helped him earn the top scores noted on these assignments.<sup>4</sup>

After graduating high school, Nichols attended commercial night schools in Salt Lake City from 1916 to 1917.<sup>5</sup> Perhaps he obtained more training in drafting because the various jobs he held afterwards usually involved using his drafting skills.<sup>6</sup>

Nichols writes in his personal history that he passed the U.S. civil service exam in 1922.<sup>7</sup> By 1924, he was hired by the Forest Service. He began taking correspondence courses in architecture and surveying about the same time. A "Complete Architectural Diploma" was awarded to Nichols in 1931 from the School of Architecture and Building Construction, of the International Correspondence Schools in Scranton, Pennsylvania. Subjects he studied included Foundations and Stone Masonry, Metalwork and Electrical Wiring, Design of Roof Trusses, Interior Decoration, and Freehand Drawing.<sup>8</sup>



Nichols' 1916 Yearbook Photo

Two years later, in 1933, Nichols earned his second diploma from the School of Civil and Structural Engineers in surveying and mapping. Among the subjects listed for this certificate were Surveying, Transit Compass, Hydrographics, and Determination of True Meridian. By 1936, he had obtained his Professional Engineering and Land Surveying license from the State of Utah. He also passed another civil service exam in architectural engineering.<sup>9</sup> Finally, in 1941, Nichols received his diploma in Highway Engineering from the School of Technology. This involved courses titled Chain Surveying and Leveling, Earthwork, General Properties of Materials, and Circular and Parabolic Curves.<sup>10</sup> Though Nichols seems to have been competent in some of these subjects before he earned the diplomas, they were probably necessary to help him advance in his career.

---

<sup>3</sup> "Red and Black Year Book, 1916" West and East High School, p. 41, in possession of Nancy Nichols Moyes.

<sup>4</sup> George L. Nichols Architectural/Mechanical Drawings Collection, MS 133, A-C, Special Collections, Stewart Library, Weber State University, Ogden, Utah. Hereinafter referred to as Nichols, MS 133.

<sup>5</sup> This is the presumed meaning of Nichols' abbreviation "Come'l Night Schools," in "Personal History," 21.

<sup>6</sup> Ibid., 28.

<sup>7</sup> Ibid., 18.

<sup>8</sup> George Lee Nichols Collection, MS 78, Box 2, Folder 4, Special Collections, Stewart Library, Weber State University, Ogden, Utah. Hereinafter referred to as Nichols, MS 78.

<sup>9</sup> "Personal History," 18-19.

<sup>10</sup> Nichols, MS 78, Box 2, Folder 4.



## Work Prior to the Forest Service

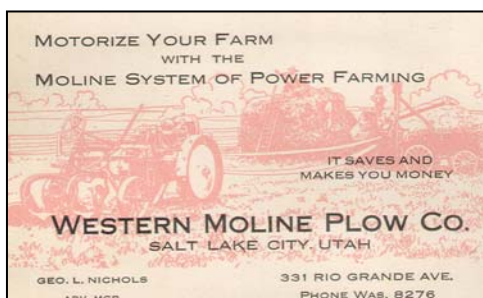
As previously noted, Nichols began working at a young age. His employers included his father, the Denver and Rio Grande Railroad, the Bureau of Public Roads, the Baldwin Radio Company, and the Western Moline Plow Company.<sup>11</sup> The latter business sold various agricultural implements ranging from tools to tractors.<sup>12</sup> A diagram of repair parts for the Moline Universal Tractor dated January 1918 and signed by Nichols was submitted to the Civil Service Commission.<sup>13</sup>

Nichols enlisted in the military in 1917 but received an industrial furlough for almost a year to work for the Moline Plow Company. Eventually he was inducted, serving five months in the Army at the end of the war. He started in August of 1918 at the age of 22 as a private, receiving training at the University of Utah. In October, he transferred to Fort Winfield Scott in San Francisco and then Fort Macarthur near Long Beach. Nichols' personal history states he served as a minelayer, but did not participate in any battles.<sup>14</sup> The Armistice was signed in November, and Nichols was honorably discharged December 16, 1918.<sup>15</sup>



WWI Minelayers, 1918,  
Nichols on left.

A war-related item of interest that Nichols helped produce is a pamphlet of WWI soldiers entitled "Lest We Forget." The Service Star Legion recruited Nichols to assist with the 1927 booklet. It contains biographies and photos of veterans from Ogden who died in the war. A thank you note tucked in the booklet expresses gratitude to Nichols for "the many times during the preparation of this book that [he] gave [them] assistance." It appears the pamphlet may have been generated in conjunction with a war commemoration ceremony.<sup>16</sup>



Nichols' Business Card

Nichols' work experience after his discharge included another year with the Western Moline Plow Company as their advertising manager. Over a two-year period he was employed at a phonograph shop in Logan and as the manager of the Player Roll Department for the Consolidated Music Company in Salt Lake City. Nichols also became self-employed for a time, managing the Nichols Music Company in Salt Lake City.<sup>17</sup> Nichols' unique scrapbook from this period includes several letters to customers regarding advertising campaigns for the businesses noted

<sup>11</sup> "Personal History," 19 and 28.

<sup>12</sup> *Polk Directory*, 1918, Utah State Historical Society, Salt Lake City, Utah.

<sup>13</sup> Nichols, MS 133.

<sup>14</sup> "Personal History," 22.

<sup>15</sup> WWI Military Service Cards, microfilm, series #85268, reel #28, Utah State Historical Research Center, Salt Lake City, Utah.

<sup>16</sup> "Lest We Forget, Our World War Heroes," Ogden, Utah, 1927, in possession of Nancy Nichols Moyes.

<sup>17</sup> Gossette.



Ardella Wheeler Nichols

above.<sup>18</sup> These, along with business cards and brochures, are a delightful study in the advertising methods of the early twentieth century. Eventually Nichols felt he needed a job that would provide a secure future for a family and concluded drafting was the answer.<sup>19</sup>

About this same time Nichols met Ardella Wheeler at Salt Air. They married in August of 1922, just after Nichols turned 26 years old. The job that provided for the new couple and was a springboard to the Forest Service presented itself during 1922-1923. The Veteran's Administration Bureau (VA) in Salt Lake City hired Nichols to teach disabled WWI veterans in the drafting department of their school. The course description infers his competency in commercial art, architectural design and drafting, machine design and drafting, plan reading, estimating, and mathematics. Blueprints dated to 1923 in the Nichols Collection include advertisements by Nichols with graphic design elements of borders and lettering. The Collection also has undated house plans and other mechanical diagrams that he may have done at this time.

A particularly interesting drawing dated 1923 is a schematic presentation of a military medical department in a theater of operations. The diagram shows a combat zone, communications zone, regiment camp, surgical hospital, medical supply station, medical lab, and train depot ("veterinary service excluded").<sup>20</sup> This may correspond to a note in Nichols' personal history listing employment by the 104<sup>th</sup> Division of the U. S. Army in Salt Lake City as a consultant from 1922 to 1924.<sup>21</sup>

Nichols's teaching assignment culminated in an exhibit of student work produced for the Colorado Industrial and Prosperity Carnival in February of 1923. The drafting trainees, along with other vocational schools, displayed their drawings in the VA's District 11 with "prizes awarded for the best specimens."<sup>22</sup> By this time, Nichols had passed the civil service exam. He began work for the Forest Service the following year.

## Joining the Forest Service

Nichols' initial hire date with the Forest Service was January of 1924. His appointment record states he was "Reinst. from Vet. Bureau" as a draftsman for the regional headquarters in Ogden, Utah.<sup>23</sup> Nichols started as a Topography Draftsman then was promoted to Chief Draftsman in the Engineering Department by July of 1924.<sup>24</sup> This

---

<sup>18</sup> Nichols MS 78, Box 8, Folder 2.

<sup>19</sup> Gossette.

<sup>20</sup> Nichols MS 133.

<sup>21</sup> "Personal History," 28.

<sup>22</sup> Nichols, MS 78, Box 8, Folder 1, newspaper clippings dated 17 January 1923.

<sup>23</sup> Appointment Record for George Lee Nichols, Region 4 History Collection, stored in Weber State University Archeology Lab, Ogden, Utah.

<sup>24</sup> "Personal History," 28.

promotion occurred one month after the birth of the Nichols' first child George Wheeler Nichols.<sup>25</sup>

When Nichols began working for Region 4, the chief workload in engineering consisted of maps and surveys. The regional *Alumni Bulletin* from 1923 and 1926 describes the



Engineering Staff, Christmas 1942  
Nichols is standing in the back row on the far right

construction of thousands of miles of roads, which provided access to resources and greatly aided the job of forest management. "Auto trucks [could] rush in supplies where there was hardly a trail" and now it was possible to drive across a forest from one side to another.

Surveys in the backcountry provided necessary information regarding watersheds and the lay of the land. Drafts of new maps or updates and revisions followed the surveys.<sup>26</sup> Sixteen recreation maps drafted, compiled and traced, or revised and traced by Nichols are in the

Nichols Collection. They date from 1924 through 1932 and point to the rapid strides in the development of the region.<sup>27</sup> Other works from this period demonstrate Nichols' varied tasks. They include drawings of salmon and trout, a warehouse plan, and a mechanical diagram of a traffic counter for the Forest Service.

By 1930, the *Alumni Bulletin* reported an increase and greater variety in the work of the Region 4 drafting staff. In addition to regular engineering work, they received project requests from other employees in other divisions who preferred "their superior product." New and unusual jobs included designing and building Forest Service exhibits for fairs and for the Idaho State Capitol, and designing covers for special editions of *The Daily News*, which was an R4 publication. The Nichols Collection has a December 1924 *Daily News* cover designed by Nichols with Santa, pine trees, and Christmas greetings. It also includes dinner programs illustrated by Nichols for the Engineering Department Christmas dinners.<sup>28</sup> But the unusual job noted in the *Bulletin*, which would be significant to the region and one in which Nichols would be extensively involved, was creating the "preliminary plans to show the size of the building



L-R: Annette, Ardella, George W. with son Bruce, George

<sup>25</sup> Appointment Record; and "Personal History," 44.

<sup>26</sup> *The Alumni Bulletin*, January 1923 and April 1926, Region 4 History Collection, stored in Weber State University Archeology Lab, Ogden, Utah.

<sup>27</sup> Nichols, MS 133.

<sup>28</sup> *Ibid.*

necessary to properly house the Forest Service in Ogden.”<sup>29</sup> This is discussed in more detail below.

As Nichols established himself in the Engineering Department, his family grew. They resided for a time in a one-bedroom house designed by Nichols. His father helped him build the dwelling, which was located at 1036 30th Street in Ogden.<sup>30</sup> A second son, Paul, was born with congenital heart disease in 1929. He was considered a “Blue Baby,” which is a term associated with a child’s bluish skin tone because the blood system is not sufficiently oxygenated.<sup>31</sup> Paul died at age five of a cerebral hemorrhage due to an accident.<sup>32</sup> No doubt his death was cause for great sorrow to Nichols and his family. George and Ardella’s only daughter, Annette, was born in 1935, completing the Nichols family.<sup>33</sup>

After son Paul was born, the Nichols family moved to a house at 2852 Eccles Avenue in a new subdivision, where they stayed for the remainder of Nichols’ life. The Nichols children remember Nichols was a “terrific and meticulous” carpenter.<sup>34</sup> Annette states her father had a small office at the house and built a drafting desk and bookshelves just to fit the dimensions of the room. He even altered a rocking chair for wife Ardella so her feet could touch the ground. Nichols was an avid photographer (a skill that contributed greatly to the historical documentation of his Forest Service work) and had a dark room in the basement. In his later years, his daughter recalls, Nichols walked with a limp possibly because of the many hours he stood at his drafting table with one foot resting on the toe bar.<sup>35</sup>

## Special Assignments

### **REGIONAL HEADQUARTERS**

Nichols presented blueprints for a new Forest Service office building to Regional Forester R. H. Rutledge as early as 1928.<sup>36</sup> While plans for the regional office were taking shape, and perhaps because he saw a need to become certified as an architect, Nichols went back to school at this time. According to graded drafting exercises in his collection, he may have started correspondence courses by 1926. This was a fortunate move for Nichols, as the stock market crashed and jobs became hard to find. He became even more valuable to the Forest Service, receiving appointments in positions of increasing responsibility.

A month after earning his second diploma in 1933, Rutledge appointed Nichols as the “contact-man” on the new Forest Service building project. With this assignment, Nichols served as a liaison between the US Department of Treasury and the contractor, Murch Brothers of St. Louis, Missouri. He also had the title of “Architect Associate” to Hodgson and

---

<sup>29</sup> *The Alumni Bulletin*, 1930, p. 13-14, Region 4 History Collection, stored in Weber State University Archeology Lab, Ogden, Utah.

<sup>30</sup> Gossette.

<sup>31</sup> “Blue Baby Syndrome,” accessed at <http://heart.healthcentersonline.com/signssymptoms/bluebaby.cfm>, 13 September 2006.

<sup>32</sup> “Personal History,” 51.

<sup>33</sup> Gossette.

<sup>34</sup> George W. Nichols, telephone interview by author, 14 September 2006.

<sup>35</sup> *Ibid.*

<sup>36</sup> George L. Nichols, “Our Building: A Record of Facts and Events,” p. 9, Region 4 History Collection, stored in Weber State University Archeology Lab, Ogden, Utah.



McClenahan, the architectural firm awarded the contract for the project. The firm, well known in the Ogden area, prepared final drawings using the revised plans submitted by Nichols.<sup>37</sup>

Further explanation is needed to understand the importance of this project. The Region 4 headquarters had been housed in a rented building located on Lincoln and 24th Street since 1909. When Arthur Newman of the Treasury Department Field Force came to inspect the facility in 1930 he found the walls and foundation in poor condition, falling plaster, a “poor boiler room,” unsatisfactory fire conditions, and a leaking roof. In addition, the organization had grown and needed more space. Though the need for new facilities was obvious, receiving approval from Washington was quite an effort. No doubt the Great Depression played a role in the building’s eventual funding and construction. The Treasury Department, at that time in charge of public buildings, became involved, as did Senator Reed Smoot and the Ogden Chamber of Commerce.<sup>38</sup>

Eventually the Second Efficiency Bill, which passed in Congress in February of 1931, appropriated \$300,000 for a new Forest Service Building in Ogden. The Economy Act later reduced that amount to \$272,000. The site at 25<sup>th</sup> and Adams was acquired through an advertisement in the *Ogden Standard Examiner* soliciting possible building sites. The Kiesel family, who coincidentally owned the old office building rented by the Forest Service, offered the lot for \$20,000.<sup>39</sup>

Construction of “the only Regional Office designed and constructed by the Forest Service” started in January of 1933 and ended February 14, 1934.<sup>40</sup> Nichols’ thorough record of



Forest Service Building, 25th and Adams, Ogden, Utah

events is a scrapbook entitled “Our Building” that is filled with interesting facts about the project. He described the U-shaped building as Art Deco, made of brick and terra cotta with a grey granite base. A three-story tower with a greenhouse and topped with a 35-foot flagpole capped the four main floors of the new office. A notable event during construction came in the form of an objection to the plans by the National Lumberman’s Association who requested that more wood be utilized in the building. This resulted in, among other things, the use of treated wood pilings rather than

concrete (427 in all). Hardwood floors in offices and wood sills and trims were added as well.<sup>41</sup> For a detailed description of the building and its construction, refer to Nichols’ scrapbook “Our Building.”

---

<sup>37</sup> Ibid., 1, 15, and 23.

<sup>38</sup> Ibid., 9-10.

<sup>39</sup> Ibid., 11-14.

<sup>40</sup> Ibid., 1 and 15; and John R. Grosvenor, *A History of the Architecture of the USDA Forest Service*, USDA Forest Service Engineering Staff Publication EM-7310-8, (Washington, DC: Government Printing Office, 1999), 58.

According to newspapers, construction of the Forest Service headquarters was an exciting event for the Ogden community. Photos of the elaborate cornerstone ceremony show government and local city officials, as well as members of the Utah Grand Lodge of Free Masons. Some are in top hats and cravats.<sup>42</sup> An open house was held for the public upon completion and Nichols gave tours through the new facility. Some of the “ultra modern” features included an air-conditioned ventilating system, a motion picture projection room, and a broadcasting station. Nichols told a reporter “the blueprint room was one of the most modern and complete he had ever seen” with excellent light in the drafting room.<sup>43</sup>

When Nichols retired in 1956, the building had been remodeled for additional office space and studies were in progress to acquire more. Eventually, the regional headquarters staff moved, but the historic edifice still houses employees of the Ogden Ranger District (Wasatch-Cache National Forest) and the Rocky Mountain Research Station. A document in the Nichols Collection states the structure was “truly a valuable addition to Ogden’s business district [that] anchored the Regional Headquarters to Ogden for the years to come.”<sup>44</sup> John Butler, a range survey forester who had an office next to Nichols around 1948, remembers Nichols showing him the building plans. Butler described him as a very conscientious architect who was especially proud of the Forest Service building.<sup>45</sup>

#### **ARCHITECTURAL STANDARDS FOR REGION 4**

As early as 1908, the Forest Service issued standard plans for administrative facilities that were occasionally realized in Region 4.<sup>46</sup> However, photographs of early structures in a Nichols scrapbook show numerous non-standard administrative buildings throughout the Intermountain Region. Rangers or hired locals generally built the simple structures. Their designs were dictated by cost, available materials and tools, personal skills, and time constraints. Appearances were as individual as the builders. Site layouts usually



Plan 51 Office, Plan 53 Dwelling, & Plan 21 Garage,  
Delano Ranger Station, Fishlake National Forest

incorporated barns and corrals in a manner resembling homesteads.<sup>47</sup> Rangers typically rented rooms in town to serve as office space.<sup>48</sup>

---

<sup>41</sup>“Our Building,” 5-17 and 24-25.

<sup>42</sup> *Salt Lake Tribune*, 16 July 1933.

<sup>43</sup> *Standard Examiner* (Ogden), 22 February 1934.

<sup>44</sup> Nichols, MS 78, “The New Forest Service Building,” Box 8, Folder 1.

<sup>45</sup> John Butler, telephone interview by author, 20 July 2006.

<sup>46</sup> Richa Wilson, *Within a Day’s Ride: Forest Service Administrative Sites in Region 4, 1891-1960* (USDA Forest Service, Intermountain Region, June 2004), 55-56.

<sup>47</sup> *Ibid.*, 56, and George L. Nichols, “Buildings Then and Now by Nick,” Region 4 History Collection, stored in Weber State University Archeology Lab, Ogden, Utah.

<sup>48</sup> Grosvenor, 57.

Although the Great Depression made conditions difficult for the general population, the Forest Service benefited from available relief funds and labor pools. Consequently, the building activity in Region 4 increased dramatically during this era, especially in regards to ranger station facilities. W. Ellis Groben came on the scene as a consulting architect to the Forest Service in Washington. He was instrumental in promoting an agency identity with standard plans that were flexible in design and materials. Nichols, under Region 4's Chief Engineer Joseph Martin, was in the right place at the right time. As an architectural engineer with experience, he spearheaded the movement towards creating an architectural identity for Region 4.<sup>49</sup> A significant number of standard R4 building plans in the Nichols Collection date to 1933 and reflect the beginning of this movement.<sup>50</sup>



Plan 51 Office, Plan 21 Garage and other standard buildings, Paradise Valley Ranger Station, Humboldt-Toiyabe National Forest

With encouragement from the Washington Office, the Region 4 Office published the *Building Construction Manual* in 1933. Nichols most likely prepared most of the manual, which was expanded in 1935.<sup>51</sup> This text included guidance on site selection and building placement, standard plans with materials lists and paint specifications, building codes, and landscaping, as well as information regarding CCC labor.<sup>52</sup> As the flurry of building activity commenced to put people to work, Nichols drafted standard plans, providing direction for four types of construction projects:

1. Facilities for permanent officers and equipment
2. Facilities for temporary officers and equipment
3. Fire protection
4. Recreational structures.<sup>53</sup>

As construction progressed during the 1930s and into the 1940s, Nichols' responsibilities increased as well. By 1939, he kept daily journals to record mileage traveled, status of projects, and notes about conversations and correspondence. Nichols' daughter recalls going visiting construction projects with her father in the summers. She remembers her mother laying out a blanket to sit on and teaching her to embroider while they waited for Nichols to do his fieldwork.

---

<sup>49</sup> Wilson, 60-61.

<sup>50</sup> Nichols MS 133.

<sup>51</sup> Wilson, 63.

<sup>52</sup> Nichols, MS 78, Box 1, Folder 9.

<sup>53</sup> Wilson, 64.

Nichols' son George W. also visited construction sites with his father and remembers he did not like waiting for him. He was about eleven years old when his father took the family on a detail to work on the Region 1 headquarters in Missoula, Montana. They lived in a one-



Plan 23 Garage & Plan 11 Barn, Salmon Ranger Station,  
Salmon National Forest

bedroom apartment for nine months.

George W. attended a local school and had a rough time with some of the boys. After this prolonged experience, the family generally did not join Nichols in extended detail work again.<sup>54</sup> Other detail locations noted in Nichols' "Personal History" include Boise, Washington D.C., and Albuquerque.<sup>55</sup>

A list of pending work with a date of January 1941 informs us of how involved Nichols became in all the stages of construction occurring in Region 4.<sup>56</sup> The list includes:

- Design, drafting, materials lists, technical advice, assistance during construction
- Site studies, preliminary to development of Improvement Plans, technical advice and assistance to field
- Checking designs and details of water systems for campgrounds and administrative building groups
- Signs, supplementary designs, assistance to field on sign problems, maintenance
- Maintenance of buildings and structures, technical advice, inspections, programming
- Checking plans of buildings proposed by special use permittees, consultant advice
- Sewage systems, design and checking
- Exhibit designs including supervision of construction and display method
- Improvement Plan Record- supervision of work using ERA, WPA

Nichols noted CCC and WPA jobs on other proposed work lists from 1938-39. A list of the 28 CCC camps located in Region 4 was tucked in his 1940 journal.<sup>57</sup> Because few of these enrollees had formal training in construction, professionals like Nichols were relied on to

---

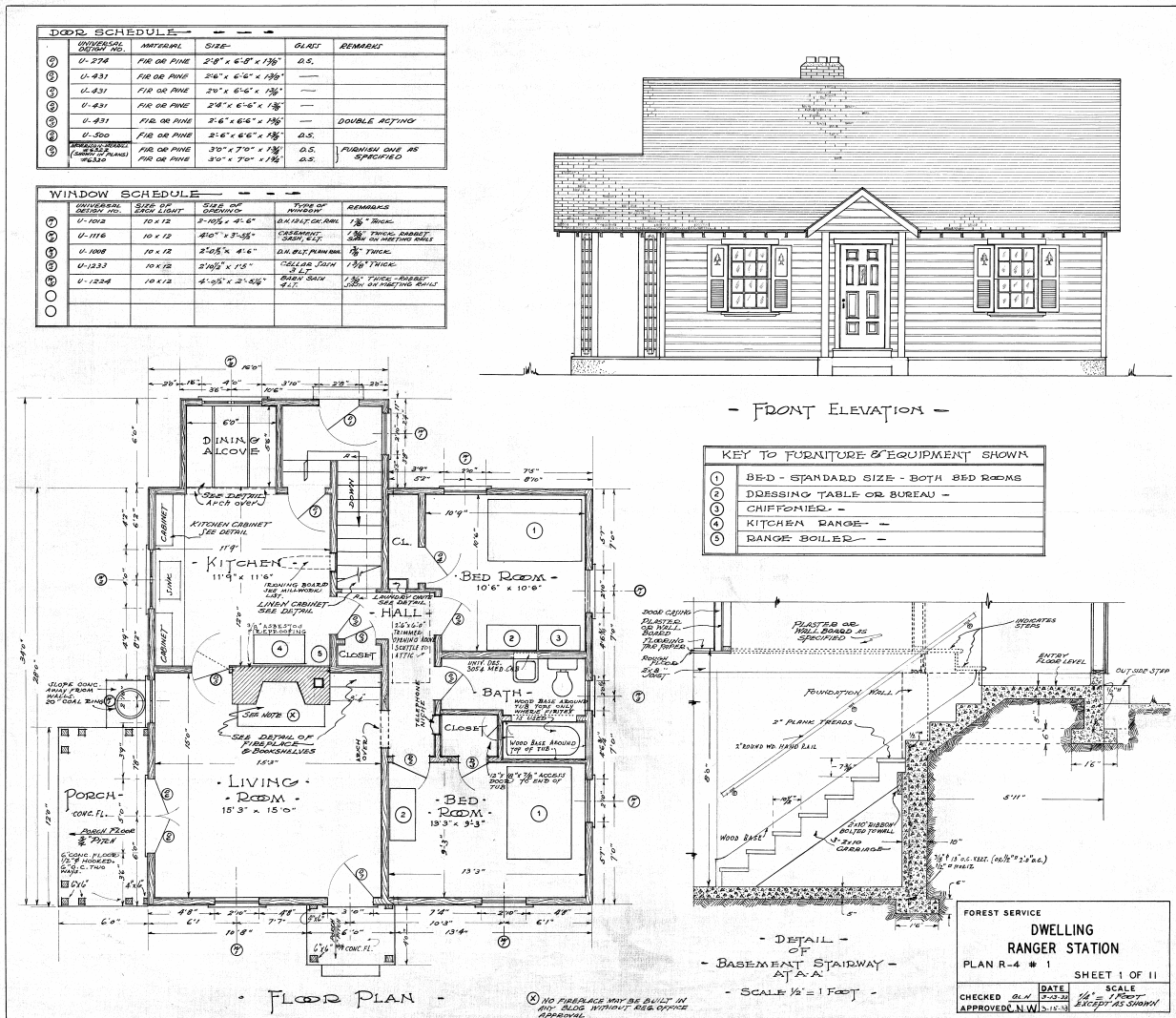
<sup>54</sup> George W. Nichols.

<sup>55</sup> "Personal History," 21.

<sup>56</sup> Nichols, MS 78, Box 3, Folder 1, "Engineering, Office of Improvements, Work Pending as of January 2, 1941."

<sup>57</sup> Nichols, MS 78, Box 2 Folder 3, "Outline of Buildings Proposed, Planned or Completed."





R4 Plan 1 Dwelling, designed by George L. Nichols in 1933.

oversee their work. From conception to completion, the list above implies the Federal government's dependence on Nichols to manage projects.<sup>58</sup>

## MILITARY BUILDINGS

As the United States entered World War II, the abundant labor force corralled within government improvement projects went to war. New Deal funding cuts and wartime rationing forced the Forest Service personnel to maintain, reuse, and rehabilitate their existing administrative buildings. Some design professionals joined the military or left civil service to support the war effort.<sup>59</sup>

<sup>58</sup> Michael D. Johnson, *A Sociocultural Perspective on the Development of US Natural Resource Partnerships in the 20<sup>th</sup> Century*, USDA Forest Service Proceedings, RMRS-p-13. 2000, accessed at [www.fs.fed.us/rm/pubs/rmrs-p013](http://www.fs.fed.us/rm/pubs/rmrs-p013), 2 August 2006.

<sup>59</sup> Wilson, 72.

Nichols went on an extended detail to the military during which he co-designed a gun plant for the Navy in Pocatello, Idaho. He was also in charge of buildings and structures for the Army's 9th Service Command, spending six months in Pocatello working on officers' dwellings.<sup>60</sup> His daughter remembers Nichols' numerous absences during this time. His journal references working at the Red Cross in the evening, even acquiring furniture and drapes for them. Following six months of journal entries referring to Pocatello, a notable entry states "January 31, 1944, released from the 9th Service Command, US Army." Nichols apparently returned to the Forest Service on February 3 when he wrote, "secured old desk from Frank Allen." While his son George W. served in Japan as a naval aviator,<sup>61</sup> George, Sr. successfully aided the war effort for a second time from home.<sup>62</sup>



Ogden City 24th of July Parade

### FLOATS AND DISPLAYS

Another assignment Nichols often referenced in his journals and in photographs was his work with parade floats and Forest Service displays. According to his daughter, he loved preparing Forest Service floats for Ogden's annual 24th of July Parade. She loved it because she usually got to ride on the float through the parade route. The floats often depicted forest settings with real pine trees inviting the public to "Enjoy the Outdoors in the Forests."<sup>63</sup>

Nichols also created displays for various purposes. Those specifically unique to WWII include characteristic depictions of the enemy and messages about the prevention of forest fires.<sup>64</sup> Because of the war, heavy equipment and personnel used to fight forest fires was unavailable. Slogans like "Careless Matches Aid the Axis," and "Your Boy, Put the



"Careless Matches Aid the Axis"

Countries' Resources Behind Him," were likely the result of the Cooperative Forest Fire Prevention Campaign. This joint venture between the Forest Service and State Forestry officials enlisted the public in forest fire protection. Because wood from the forests was needed for everything from packing crates to gunstocks, and barracks to aircraft, it was vitally important that this resource be protected.

By 1945, Smokey Bear joined the campaign to protect the national forests. Nichols' daughter remembers her father describing the genesis of the

<sup>60</sup> *Standard Examiner*, Obituary, 10 May 1972; and Nichols, MS 78, Box 3, Folders 3 & 4, Journals, July 1943 through Jan. 1944; and Nichols, MS 133-90 and MS 133-91.

<sup>61</sup> WWI Military Service Cards.

<sup>62</sup> Nichols, MS 78, Box 3, Folders 3 and 4, Journals: July 1943 through Jan. 1944.

<sup>63</sup> Nichols, MS 78, Box 8, Folder 3, photographs.

<sup>64</sup> Nichols, MS 78, Box 12, Folder 6, photographs.



Nichols' Relief Map of Utah



Nichols' Display About Forest Production

idea of using a bear in forest fire prevention advertisements.<sup>65</sup> Artist Albert Steahle painted the original poster of Smokey Bear for the War Advertising Council (now the Advertising Council). In 1947, the Council issued the well-known message “Only YOU Can Prevent Forest Fires.”<sup>66</sup> Most people are familiar with that slogan but they might be surprised to know it resulted from the wartime effort.

Other displays produced by Nichols point to Forest Service public relations. His July 1946 journal entry briefly describes manning the booth at the Utah State Fair, notable visitors who came by, ribbons awarded, and assembling/disassembling the display. In 1947, Nichols noted working on a Forest Service exhibit for the State Capitol. Sometime later he produced a relief map of the State of Utah that was displayed in the Capitol. Nichols' daughter recalls her father working on a display with miniature pine trees and buildings and going with him to find tiny toy cars to add to it.<sup>67</sup>

Some of Nichols' displays addressed forest resources with printed information and photographs. Others were miniature or life-size re-creations of forest scenes accompanied by titles or slogans. Upon his retirement, the *Old Timers* newsletter listed a variety of locations Nichols' exhibits were shown. These included state fairs and capitol buildings in Utah and Idaho, as well as the Field Museum of Natural History in Vernal, Utah.<sup>68</sup>

## **REGIONAL ARCHITECT**

By 1946, Nichols had stepped into his role as Region 4's first regional architect.<sup>69</sup> After the war, new technologies became available, research stations worked on local forest and range problems, and specialists like forest engineers, landscape architects, and silviculturists increasingly joined the Forest Service. In an effort to reuse structures, a journal

<sup>65</sup> Gossette.

<sup>66</sup> Gerald W. Williams, *The USDA Forest Service: The First Century*, Publication FS-650 (Washington, DC: USDA Forest Service, 2000), 81 and 84-86.

<sup>67</sup> Gossette; and Nichols, MS 78, Box 8, Folder 4, photographs.

<sup>68</sup> *Old Timers News*, No. 16 Newsletter, July 1956, Region 4 History Collection, stored in Weber State University Archeology Lab, Ogden, Utah.

<sup>69</sup> Grosvenor, 52.



entry in 1947 notes moving and remodeling buildings.<sup>70</sup> A biographical sketch declared Nichols saved the government hundreds of dollars “conducting the transfer and removal of obsolete buildings in the Intermountain Region to relieve a critical housing shortage.”<sup>71</sup> Until his retirement Nichols’ journals continue in the same format, logging efforts spent in designing, drafting, inspecting, and special projects involving displays or work for other regions.



Plan 13A Barn, Duck Creek Ranger Station,  
Dixie National Forest

Most of Nichols’ Forest Service designs are utilitarian with little architectural ornament. Some represent Period Revival styles of the era.<sup>72</sup> His work was influenced by constraints imposed by the Operations Department, which controlled building funds for the Forest Service. William Turner, Nichols successor as regional architect, explained that he too dealt with these constraints during his tenure, recalling that department head Thomas H. Van Meter preferred plain, utilitarian structures. He did not tolerate what he considered “frills” – features like shake shingles or stone exteriors. According to Turner, Nichols experienced frustration with rules that were not flexible enough for different locales. An example would be the refusal of funds for extra insulation in a colder temperature zone.<sup>73</sup>

Another friend and co-worker, John Butler, recalled Nichols enjoyed all aspects of architecture. He did much of his own drafting, many fine ink drawings, and extensive arithmetic. Nichols was knowledgeable about houses and offices in the “high country,” including the effects of snow loads on these structures. Butler was also aware Nichols had to hold to certain specifications and “didn’t like them much.” Nichols’ daughter said he had a talent at home for “making something out of nothing,”<sup>74</sup> a skill he likely relied on at work.



Plan 54 Office & Plan 33 Warehouse,  
Supervisor’s Office in Hailey, Idaho

A journal entry dated August 16, 1950 not only reveals the never-ending concern for funds, but also his varied abilities and work ethic.

“Set to work to plan exhibit. Selected pictures, wrote copy, briefed Fred Meru on booth construction (no money), contacted Fair, arranged for space inside, helped make pictures. Work finished for the day at 11:30pm. Used personal car.”<sup>75</sup>

<sup>70</sup> Nichols, MS 78, Box 3, Folder 7, journal.

<sup>71</sup> “Personal History,” 63.

<sup>72</sup> Wilson, 64.

<sup>73</sup> William Turner, telephone interview by author, 11 July 2006.

<sup>74</sup> Gossette.

<sup>75</sup> Nichols, MS 78, Box 4, Folder 1, journal.



Finally, a “Schedule of Expenses and Amounts Claimed” in Nichols’ 1956 journal documents the type of work he performed in his last year with the Forest Service. Representative of his



Plan 1 House, US Sheep Experiment Station near Dubois, Idaho

extensive career, it lists tasks such as studies, sketches, preliminary designs, construction inspections, plan revisions, design, drafting, meetings, estimates, handbooks, and brochures. Nichols’s last journal entry notes a letter released from the Regional Office, possibly about his retirement, and sending plans he had developed for Region 2.<sup>76</sup>

Because of his abilities, many forest personnel became familiar with “Nick.” People who knew him consistently describe him as a congenial, multi-talented man who liked and got along well with people. Most emphatically, they recall he had a good reputation as a hard worker.<sup>77</sup>

### **WORK FOR OTHER REGIONS**

As mentioned above, other Forest Service regions sought professional help from Region 4’s drafting department and from Nichols. Requests for assistance began in the 1920s and continued to Nichols’ retirement. An interesting anecdote printed in the *Alumni Bulletin* revealed the atmosphere as engineering employees tried to complete projects around 1930.

“Last winter the ceiling of the room fell in due to rush and overloading . . . fifty percent of outside jobs of drafting are rush jobs and they are wanted the same day, but take a week . . . the generous confidence with which other divisions use us we take as a compliment.”<sup>78</sup>

Nichols’ son George W. remembers his father eventually had opportunities for promotion and transfer to other regions. However, his wife Ardella loved her home and the couple chose to remain in Ogden.<sup>79</sup> While he remained in Region 4, Nichols completed specific projects for various regions, some of which are documented in the Nichols Collection at Weber State University. These include:

#### **Region 1 (MS133-21)**

Offices and Rocky Mountain Forest and Range Experiment Station, 1934

#### **Region 3 (MS 133-22 to 32)**

Automotive Shop, preliminary drawings and working drawings, 1956  
Barn, 2-Horse and 3-Horse, 1956

<sup>76</sup> Nichols, MS 78, Box 4, Folder 7, journal.

<sup>77</sup> Wilden Moffett, telephone interview by author, 11 July 2006; and Butler, Gossette, Turner.

<sup>78</sup> *Alumni Bulletin*, 1930, 13.

<sup>79</sup> George W. Nichols.

Dwelling, 3-Bedroom, 4 preliminary schemes and working plans, 1955-1956  
Equipment Storage Building, proposal and working plans, 1955  
Glenwood Ranger Station Office, date unknown  
Residence, 2-Bedroom, date unknown  
Springerville Proposed Shop, 1955

### Region 5 (MS 133-98 to 101)

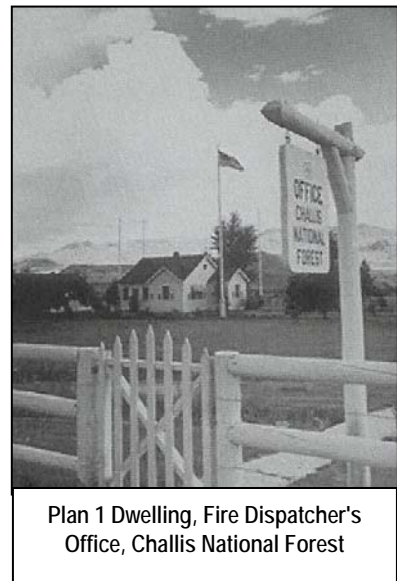
Apartment-Motel, 2-unit, 1952  
Adobe Barn, 2-Horse, preliminary sketches and working plans, 1951  
Gas and Oil Canopy, 1951

## Specific Contributions

### **HANDBOOKS AND MANUALS**

Until Nichols' 1935 *Building Construction Manual* was compiled, Forest Service construction was dictated by the Forest Service *Use Book* and various national and regional directives. As construction became standardized, up-to-date publications were needed to carry out the vision set forth by the Washington Office. The many manuals and handbooks Nichols produced are a notable contribution to that vision.

A 1937 field version of Nichols' *Improvement Handbook* contains an introduction that articulates the vision. It states the book was prepared for the Washington Office "with input and review by engineers, architects and personnel in regional offices and the Washington Office." The purpose given was "to make available methods and standards recognized as good building practices for Forest Service engineers, architects, and men engaged in construction."<sup>80</sup> This statement probably speaks for all the handbooks Nichols compiled and indicates his pioneering role in architecture for Region 4.



Plan 1 Dwelling, Fire Dispatcher's Office, Challis National Forest

The titles of Nichols' works point to his innovative efforts in providing direction and solidifying a standardized, consistent approach to Forest Service buildings. He is credited with writing the R4 *Building Construction Manual* (1933, 1935, updated 1946), the *Improvement Handbook* (1937), and the Building Construction Section of the *Engineering Handbook* (1946). Additional handbooks produced in Nichols' era that he was probably involved with include the *Campground Improvement Manual* (1933, with R5 architect), the *Sign Handbook*, and the *Forest Service Road Handbook*.

<sup>80</sup> USDA Forest Service, *Improvement Handbook*, n.p.: 1937.

## **DOCUMENTATION AND PHOTOS**

As noted by regional engineering staff in the 1930 *Alumni Bulletin*, “the work we do is of the kind that is a permanent and lasting nature.” Nichols’ archival materials at Weber State University and in Region 4’s Engineering Office demonstrate his sense of posterity. He saved, collected, and compiled a variety of media, often taking the time to organize them in scrapbooks. Nichols’ documentary efforts are a significant contribution to the Forest Service, the Intermountain Region, and the community of Ogden. They document the early era of the Forest Service, as well as the standardization of Forest Service architecture and site planning throughout Region 4. They also help us understand the professional field of architecture and its evolution over several decades.

The varied types of archival materials saved by Nichols and available for additional research include the two George L. Nichols collections (MS 78 and MS 133) in the Stewart Library’s Special Collections of Weber State University. As noted in the finding aids (see Appendix B), they contain blueprints, drawing plates, scrapbooks, publications, photographs, journals (1939-1956), maps, newsletters, and certificates.

Much of Nichols’ work also remains with the Forest Service’s Region 4 headquarters in Ogden. Part is with the Facilities Design Team of the Engineering Office and part is in the R4 History Collection, presently stored in the Archeology Lab of Weber State University. Items include:

- Original site plans and architectural plans
- Scrapbooks including “Our Building, A Record of Facts and Events”
- Handbooks and Manuals
- Newsletters
- Appointment Record for George Lee Nichols
- Photographs

Nichols’ granddaughter, Nancy Nichols Moyes, possesses additional scrapbooks, notebooks, and a personal history recorded by Nichols.

## **After Retirement**

### ***NARCE***

After retirement, Nichols offered architectural services as a private practice. He also became highly involved in the National Association of Retired Civil Employees (NARCE), currently know as the National Association of Retired Federal Employees (NARFE). This organization’s purpose is “to protect and improve benefits of federal retirees, employees,

and their families.”<sup>81</sup> *Old Timers* newsletters document Nichols’ participation in NARCE and his important accomplishments.

Several retirees including George Nichols decided to form a local chapter of NARCE in 1958. Nichols even visited the national headquarters in Washington D.C. and “was impressed with the activities and enthusiasm of the officers.”<sup>82</sup> After the formation of an Ogden Chapter, Nichols held several positions of leadership:

- |              |  |
|--------------|--|
| 1959 to 1962 | President of Ogden Chapter<br>President of the Utah Federation of Chapters<br>Field Vice President over Utah, Colorado, Wyoming, Montana |
| 1962 to 1966 | National Field Vice President, Region 13<br>National Second Vice President<br>National First Vice President                              |

Nichols reorganized NARCE’s Ogden Chapter #320. It began with 70 members and by 1959 reached over 200. He organized federations in Utah, Colorado, Wyoming, and Montana. He participated in passing legislation to exempt civil service retirement income from Utah State Income Tax.<sup>83</sup>



Nichols with NARCE officials and spouses,  
Pennsylvania Convention, 1963

In his national role beginning in 1962, Nichols traveled to various state federation conventions. His principle responsibility was acting as a legislative representative lobbying congressmen and senators for annuity increases, retirement eligibility after 30 years, a 10% raise to widows, and other retirement system improvements.

Nichols’ son George W. lived and worked in Washington D.C. at the same time his father worked there for NARCE. He

recalls that his father’s work with NARCE was one of his proudest accomplishments. “Dad had a good rapport with people. He could talk to anyone on any level. For someone who had to get his high school diploma at night school, he could write a letter that couldn’t be beat.”<sup>84</sup> Upon leaving NARCE, Nichols received over 100 letters from congressmen and others thanking him for his efforts.<sup>85</sup> *Retirement Life* magazine, the official publication of NARCE, honored Nichols in their April 1969 issue.<sup>86</sup>

<sup>81</sup> NARFE website accessed at [www.narfe.org](http://www.narfe.org), 11 September 2006.

<sup>82</sup> *Old Timer’s News*, no. 21 (February 1958), 5.

<sup>83</sup> *Old Timer’s News*, Vol. 2, no. 2 (June 1959), 5, and Vol. 3, no. 4 (October 1962), 5.

<sup>84</sup> George W. Nichols.

<sup>85</sup> *Old Timer’s News*, Vol. IV, no. 2 (July 1964), 13 and Vol. IV, no. 7 (October 1966), 5.

<sup>86</sup> *Old Timer’s News*, Vol. VII, no. 2, (June 1969), 10.



## **AWARDS & MEMBERSHIPS**

Accolades for Nichols' work are abundant in his records. Below is a sample of memberships he held and awards he received.<sup>87</sup> Future research into his participation and accomplishments is recommended.

- Society of American Military Engineers, 1943
- Utah Society of Professional Engineers, 1952
- National Society of Professional Engineers, 1952
- National Color Photographers Association, 1958
- The American Legion, 1959
- *Retirement Life* magazine, April 1969
- Personalities of the West, 1971
- Kiwanis International, 25 years
- Red Cross
- Ogden Community Chest
- City Buildings and Lands Committee
- President of Ogden Engineers Club
- Boy Scouts
- Sons of the Utah Pioneers



## **OTHER NOTABLE WORK**

Nichols' body of work is extensive and warrants future research. In addition to many standard Forest Service buildings (see Appendix A), Nichols designed or was involved with the following projects:<sup>88</sup>

- Alta Lodge, Wasatch National Forest, Utah
- Aspen Grove Amphitheater, Uinta National Forest, Utah
- Ponds Resort, Targhee National Forest, Idaho
- Region 1 Headquarters, Missoula, Montana
- Camp Kiesel Betterment, Utah
- Lake of the Woods Lodge, Wyoming
- Fort Douglas Remodeling Plans, Salt Lake City, Utah
- Dunkley Paint, Ogden, Utah
- Eagles Lodge, Brigham City, Utah
- Central Chevrolet, Brigham City, Utah
- Low-cost housing for Peterson Enterprises, Brigham City, Utah
- Bank of Ben Lomond, Ogden, Utah
- Thiokol Warehouse, A-2 1<sup>st</sup> Addition, Utah
- Sinclair Service Station

---

<sup>87</sup> *Standard Examiner*, Obituary, 10 May 1972.

<sup>88</sup> Nichols, MS 78, Box 4, Folder 8, journal and Box 10, Folder 1, scrapbook.

- Cattleman's Show Sports Area, Cedar City, Utah
- Boise Assay Office additions (not realized), Boise, Idaho
- LDS 17-23 Ward Building Addition, Ogden, Utah
- Various Residences

## Conclusion

George Lee Nichols died May 10, 1972 in Ogden, Utah at age 75. His obituary states the cause of death was an extended illness. Nichols had a heart attack at age 48, as well as hereditary heart problems that passed to his sons. At the time of his death, he also had diabetes and a colon infection.<sup>89</sup> He is buried in the Ogden City Cemetery.

Nichols is survived by two of his children and their families. Son George Wheeler Nichols, another "Nick," resides in Florida and daughter Annette Nichols Gossette lives in Tooele, Utah.

Thanks to his artistic abilities and love of photography, George Nichols left extensive records recording his life and work, which has made this text possible. The author is indebted to Nichols' children for most of the details and to his granddaughter Nancy Nichols Moyes for the generous loan of Nichols' personal history and scrapbooks.



Nichols in Uniform

---

<sup>89</sup> George W. Nichols.

## APPENDIX - STANDARD PLANS

The following was compiled from the Region 4 *Engineering Handbook, Building Construction Section* (revised 1946). Nichols is credited with designing or modifying the building plans, which were realized throughout the Intermountain Region.

Type	Plan No.	Name	Issued	Revised
Amphitheaters	107	Amphitheater		
Amphitheaters	107A-2	Amphitheater Stage		
Amphitheaters	107A-4	Amphitheater		
Antenna Tower	153	Antenna Tower	5/1936	
Barn	11	4-Horse Barn with hay storage; also alternate with narrow feed aisle	4/1933	
Barn	12	6-Horse Barn with hay storage	4/1933	5/1934
Barn	14	Fly Shed	3/1933	5/1934
Barn	15	Hay barn- baled hay- 40 tons	5/1940	
Barn	34	2-Horse barn- storeroom- garage	1/1934	5/1934
Barn	13-A	2-Horse Barn with hay storage	4/1933	5/1934
Barn	13-B	2-Horse Barn with limited hay storage	3/1933	5/1934
Barriers	69B-3	Barriers		
Barriers	69B-3	Barriers	2/1935	
Barriers	69B-4	Barriers		
Barriers	69B-4	Barriers	5/1936	
Barriers	69B-5	Barriers, log		
Barriers	69B-5	Log Barriers	11/1937	
Bathhouses	112	2 showers, 2 tubs, 2 toilets, 2 laundry tubs		
Bathhouses	112A-1	4 showers, 2 toilets		
Bathhouses	112A-2	(Shakes) 4 showers, 2 toilets, laundry room & storeroom		
Bathhouses	112A-3	(Rock) same as 112A-2		
Bathhouses	124A-1	Dressing room building		
Bathhouses	126G-10	Bath house for work camps		
Bathhouses	112	Bathhouse	Incomplete	
Bathhouses	112-A-1	Bathhouse	3/1935	
Bathhouses	112-A-2	Shower Bathhouse	4/1935	
Bathhouses	112-A-3	Shower Bathhouse	5/1935	
Bathhouses	126-G-1D	Bathhouse		
Bathhouses	73-B	Bathhouse and comfort station	6/1939	
Blacksmith Shops	40	Blacksmith Shop	3/1933	5/1934
Blacksmith Shops	126-B	Blacksmith Shop and Machine Shop		1945
Boat Facilities	123	Boathouse	5/1936	
Boat Facilities	123	Boat house for row boats		
Boat Facilities	123B-1	Boat landing, pontoon		
Boat Facilities	123-B-1	Pontoon Boat Landing	3/1935	5/1936
Boat Facilities	123B-2	Boat landing, stationary, parallel shore		
Boat Facilities	123-B-2	Stationary Boat Landing	8/1936	
Bridges	121A-2	Bridges, foot, peeled log		

Type	Plan No.	Name	Issued	Revised
Bridges	121A-3	Bridges, foot, peeled log		
Bridges	121A-4	Bridges, foot, minor, peeled log		
Bridges, Foot	121-A-1	Log foot bridge and masonry abutments	2/1935	
Bridges, Foot	121-A-1	Alternate log foot bridge	1/1936	
Bridges, Foot	121-A-2	12' and 15' foot bridges	3/1936	
Bridges, Foot	121-A-3	20' to 30' foot bridges	7/1936	
Bridges, Foot	121-A-4	24' to 48' foot bridges		
Bulletin Boards	64-A	Bulletin Boards	4/1933	5/1934
Bulletin Boards	64A-1	Bulletin Boards and directional signs, log		
Bulletin Boards	64-A-1	Bulletin Boards	5/1936	
Bulletin Boards	64A-2	Registration box		
Bunk Houses	9	Bunk House	5/1933	5/1934
Bunk Houses	10-A	Mess house and dormitory	6/1936	
Bunk Houses	126-G-1A	25-man side camp barracks	3/1941	1945
Bunk Houses	126-G-1D	Barracks		
Bunk Houses	126-J	Dormitory	5/1939	
Bunk Houses	126-J-A	Administrative building and bunk house	1/1941	
Bunk Houses	133-A-2A	Guest cabin group- 6 comp.	4/1938	
Bunk Houses	9-B	Dormitory- guard station- storehouse	1946	
Bunk Houses				12/1937
Bunks	126-H	Double Bunks		1946
Cabins	6	Guard Station- one room	3/1933	5/1934
Cabins	23	1-room and garage (for small car)	3/1933	5/1934
Cabins	126-G-1AA	Duplex dwelling -work camp type	1945	
Cabins	126-G-1AC	Single dwelling- work camp type	1945	
Cabins	126-G-1AD	Single dwelling- work camp type	1945	
Cabins	133-A-1	Tourist Cabin	5/1933	
Cabins	133A-2	Cabin, 1 room, log, with toilet		
Cabins	133-A-2	1-Room Cabin	9/1935	
Cabins	133A-2A	Cabin, 6-compartment		
Cabins	133-A-2A	Guest Cabin group- 6 units	4/1938	
Cattle Guards	67	Cattle Guard	4/1933	5/1934
Cattle Guards	67	Cattle Guard		
Cattle Guards	67A	Cattle Guard		
Cattle Guards	67-A	Cattle Guard (use only at adm. sites)	4/1933	5/1934
Cattle Guards	67A-1	Cattle Guard, log, Uinta type		
Cellars	62	Cellar- hillside type	3/1933	5/1934
Cellars	63	Cellar- above ground type	3/1933	5/1934
Cellars	62-A	Cellar- hillside type (small)	4/1934	
Checking Stations	64B	Checking station and telephone booth		
Checking Stations	64-B	Checking station and telephone booth	6/1933	5/1934
Checking Stations	64C	Entrance-way & checking station		
Checking Stations	64-C	Entranceways and checking station (sketch only)	12/1938	
Comfort Stations	70	Single unit Toilet (pit type)	3/1933	5/1934



Type	Plan No.	Name	Issued	Revised
Comfort Stations	70	Single unit pit type	3/1933	5/1934
Comfort Stations	71	Four-unit chemical latrine		
Comfort Stations	71	Four-unit -- chemical type	4/1933	6/1935
Comfort Stations	72	Four-unit pit latrine	4/1933	5/1934
Comfort Stations	72	Four-unit -- pit type	1933	
Comfort Stations	73	Five-unit -- std. plumbing type	4/1933	5/1934
Comfort Stations	74	Eight-unit -- std. plumbing	4/1933	5/1934
Comfort Stations	77	Eight-unit -- chemical type	8/1934	
Comfort Stations	79	Portable	4/1935	
Comfort Stations	126-G-1B	Latrine F.S. side camps	3/1941	
Comfort Stations	126-G-1B	Latrine F.S. work camps	1945	
Comfort Stations	126-G-1DD	Comfort station- work camps	1945	
Comfort Stations	126-G-1DD	Comfort station- work camps	1945	
Comfort Stations	70-A-1	Single unit Toilet (pit type)	3/1935	
Comfort Stations	70-A-1	Single unit- pit type	3/1935	
Comfort Stations	70-A-2	One unit chemical latrine	12/1935	
Comfort Stations	70-A-2	Single unit- chemical type	12/1935	
Comfort Stations	70-B-1	Two-unit pit latrine	2/1935	
Comfort Stations	70-B-1	Two-unit -- pit type	2/1935	
Comfort Stations	70-B-2	Two-unit standard plumbing	4/1935	
Comfort Stations	70-B-2	Two-unit -- std. plumbing type	4/1935	
Comfort Stations	70-B-3	Two-unit chemical latrine	5/1935	
Comfort Stations	70-B-3	Two-unit -- chemical type	5/1935	
Comfort Stations	70-B-3 (1)	Two-unit -- chemical type (log)		
Comfort Stations	70-B-3 (W)	Two-unit -- chemical type (log)	11/1940	
Comfort Stations	71-A-2 (Alt)	Four-unit -- chemical type (rock)	7/1935	
Comfort Stations	71-A-3	Four-unit -- chemical type	5/1938	
Comfort Stations	72-B-1	Five-unit -- std. plumbing type	2/1935	
Comfort Stations	73-B	Bathhouse and comfort station	6/1939	
Comfort Stations	73-B	Four-unit and Showers-- std. plumbing	6/1939	
Concession Building	127	Concession building with attendant's quarters		
Concession Building	127	Concession Building with attendant's quarters	8/1941	
Concession Building	64-B	Checking station building (may be adapted)	6/1933	5/1934
Cupboards	116	Campground food box cooler		
Dormitories	9	Bunk House	5/1933	5/1934
Dormitories	10-A	Mess house and dormitory	6/1936	
Dormitories	126-G-1A	25-man barracks-work camp.	1945	
Dormitories	126-J	Dormitory	5/1939	
Dormitories	126-J-A	Dormitory and office	1/1941	
Dormitories	8-A	Dormitory	6/1938	
Dormitories	9-B	Dormitory or guard station	1946	
Dormitories	1-F	Dormitory and Office	6/1937	
Dwellings	1	Dwelling-ranger station (basic) 4-room, modern with basement	1933	1945-46
Dwellings	1	Heating- Special plans		1945-46

Type	Plan No.	Name	Issued	Revised
Dwellings	1	Specifications for contract work	1945-46	
Dwellings	2	Summer type R.S. dwelling, 3 or 4 room, summer type, modern.	1933	
Dwellings	4	Dwelling-guard station	1933	
Dwellings	5	Dwelling-guard station, one room and storeroom	1933	1937
Dwellings	6	Guard dwelling, one room, no porch	1933	1934
Dwellings	7	Dwelling-guard station, two room, (basic)	1933	
Dwellings	7	Dwelling-guard station, shower and toilet room (alternate)	1935	
Dwellings	8	Dwelling- Ranger station	1933	1937-38
Dwellings	9	Bunk House	1933	1937
Dwellings	53	Dwelling, 3-room modern, space heaters, no furnace	1933	1934
Dwellings	1 Alt.	Scheme 1- Plans for a basement room in basic dwelling plan	1945-46	
Dwellings	1 Alt.	Scheme 2- Plan for adding two upstairs bedrooms to basic Plan 1.	1945-46	
Dwellings	1 Alt.	Scheme 3- Adding Bedroom- 1st floor basic Plan 1	1945-46	
Dwellings	1 Alt.	Scheme 4- Porch enclosure- addition to basic Plan 1		
Dwellings	1 Alt.	Scheme 5- Adding dining room and bedroom	1945-46	
Dwellings	10A	Mess house and dormitory	1936	
Dwellings	126-G-1AA	Duplex dwelling unity for work camps	1945	
Dwellings	126-G-1AC	Dwelling unit- work camps	1945	
Dwellings	126-G-1AD	Dwelling unit- work camps	1945	
Dwellings	126-P	Dwelling- unit type, semi-portable, 3 or 4 units	1946	
Dwellings	1A	Dwelling-ranger station (basic).	1933	1945-46
Dwellings	1A Alt.	Scheme 1- Porch enclosure dwelling R.S.	1933	
Dwellings	1C	Dwelling, 6 room, modern with basement	1936	
Dwellings	1C-1	Dwelling, 3-bedroom type, modern with basement	1945	
Dwellings	1C-2	Dwelling, 3-bedroom type, modern with basement	1945	
Dwellings	1C-3	Dwelling, 3-bedroom type, no basement		
Dwellings	1C-4	Dwelling, 3-bedroom type, no basement		
Dwellings	1C-5	Duplex dwelling, no basement, (sketch only)	1946	
Dwellings	1F	Dormitory and office	1937	
Dwellings	7 Alt. 1	Guard station- additions to Plan 7	1935	

Type	Plan No.	Name	Issued	Revised
Dwellings	7B Revised	For telephone building landmark		
Dwellings	7C	Guard dwelling	1946	
Dwellings	7R	Dwelling enlarged to 4 rooms	1946	
Dwellings	8A	Dwelling- ranger station, 3-room dwelling or dormitory	1938	
Dwellings	9B	Dormitory- guard station- storehouse	1946	
Electric Light Plants	101A	For portable trailer units and camps	1946	
Electric Light Plants	101B	For typical 25-man work camps	1946	
Electric Light Plants	101C	For typical 50-man work camps	1946	
Electric Light Plants	101D	For typical 100-man work camps	1946	
Electric Light Plants	101E	For typical guard station setup	1946	
Electric Light Plants	101F	For typical ranger station setup	1946	
Electric Light Plants	101G	For typical Supervisor's hdqtrs. Setup	1946	
Electric Specifications	101	Electric specifications		
Electric Wiring Specs	101	Electric wiring specifications (general)	5/1936	1946
Equipment Buildings	35	Garage and equipment building	3/1935	3/1938
Equipment Buildings	37	Warehouse, (may be adapted, requires special R.O. approval)	7/1935	
Equipment Buildings	39	Warehouse or shop (may be adapted	1946	
Equipment Buildings	35-A	Garage and equipment building	11/1937	
Equipment Buildings	35-B	Garage and equipment building, 81 ft.	3/1938	
Equipment Buildings	35-D	Warehouse, garage or equipment bldg	6/1939	
Equipment Buildings	39-CB	Equipment Building	1946	
Exhibit Building	141	Exhibit Building	8/1940	
Exhibit Building	141	Exhibit Building		
Exhibit Cases	141A	Exhibit cases- 4 styles	1945	
Fences	65	Fences and gates	4/1933	5/1934
Fences	65	Fences and gates (3 sheets)		
Fences	65A	Buck pole fence		
Fences	65-A	Buck pole fence	2/1935	5/1934
Fences	65C	Worm fence		
Fences	65-C	Worm fence	6/1935	
Fences	65D	Log and block fence		
Fences	65-D	Log and block fence	6/1935	
Fences	65-E	Head and body squeeze	8/1941	
Fireplaces	105	Warming fireplace		
Fireplaces	106	Bonfire place, large groups		
Fireplaces	106A-1a	(a) Bonfire place, small groups		
Fireplaces	106A-1b	(b) Rustic bench		
Fish Hatchery Building	160	Fish Hatchery	6/1938	
Flag Pole	118	Flag Pole	2/1936	
Flag Pole	118	Flag Pole		
Food Box Cooler	116	Food Box Cooler	3/1936	
Foundation Forms	102	Foundation forms and layouts		
Foundation, Conc. Form	102	Data Sheet	5/1933	
Fountains	98A-2	Drinking fountain, stone		
Fountains	98A-3	Log drinking fountains and picnic grill		

Type	Plan No.	Name	Issued	Revised
Fountains	98A-4	Drinking fountain, single rock		
Fountains	98A-5	Drinking fountain, roadside		
Garages	20	2-car garage (to go with Dwelling Plan 1, 1A)	3/1933	5/1934
Garages	21	2-car garage and storeroom	4/1933	5/1934
Garages	23	1-car garage and storeroom (good for small cars only)	3/1933	5/1934
Garages	24	1-car garage	3/1933	5/1934
Garages	26	Single car garage and workshop	6/1935	
Garages	34	Garage-storeroom and barn	1/1934	5/1934
Garages	35	Garage and equipment bldg. (101 ft. long)	3/1935	3/1938
Garages	36	Garage and storeroom	6/1935	
Garages	126-D	Garage (work camp setups) 22 x 105.5 ft	4/1935	
Garages	126-D-1	Garage (work camp setups) 26 x 105.5 ft	1946	
Garages	126-D-2	Garage (work camp setups) etc. 20 x 105.5 ft	1935	
Garages	20-C	2-car garage (to go with Dwelling Plan 1C)	4/1936	
Garages	20-C-1	2-car garage (to go with Dwelling Plan 1C1)	1945	
Garages	20-C-2	2-car garage (to go with Dwelling Plan 1C2)	1945	
Garages	21-A	2-car garage and oil house	3/1938	
Garages	33-A	3-car garage and storeroom	11/1937	
Garages	33-A-1	3-car garage and storeroom	1/1941	
Garages	33-B	Storeroom and garage	5/1934	
Garages	33-C	Storeroom and garage	5/1934	
Garages	35-A	Garage and equipment bldg. (60 ft. long)	11/1937	
Garages	35-B	Garage and equipment bldg. (80 ft. long)	3/1938	
Garages	35-D	Garage and storeroom	6/1939	
Garages	39-CB	Equipment Building	1946	
Garbage Facilities	103	Garbage pit covers	6/1933	
Garbage Facilities	103	Garbage pit covers		
Garbage Facilities	125	Garbage can anchorage	3/1935	
Garbage Facilities	125	Garbage can anchorage		
Garbage Facilities	103B-1	Incinerators		
Garbage Facilities	103-B-1	Incinerators	5/1935	
Gas & Oil Houses	95	Gas and oil house	2/1935	
Gas & Oil Houses	126-E	Gas and oil house	4/1935	
Gas & Oil Houses	126-G-1C	Gas and oil house	3/1941	
Gas & Oil Houses	21-A	2-car garage and oil house	3/1938	
Gas & Oil Houses	95-A	Oil house (with load platform)	5/1935	
Gas & Oil Houses	95-B	Small gas and oil house	5/1939	

Type	Plan No.	Name	Issued	Revised
Gas & Oil Houses	95-C	Gas and oil house	1/1940	
Gates	6	Safety flue (illustrates principle)	1933	
Gates	119	Spark Arrester	2/1941	
Gates	105-A	Heating Stove	11/1933	
Gates (See fences)		Heating stoves, Ect. (See also Campground Stoves Recreation Structures)		
Hoisting Devices	152	Hoisting Device	3/1936	
Incinerators	103-B-1	Incinerators	5/1935	
Light & Pump Plant	126-G-1E	Light and pump plant building- work	3/1941	
Light & Pump Plant	126-G-1F	Small portable building- camp setups	3/1941	
Light & Pump Plant	95-D	Small Pump House	6/1940	
Loading Platform	152-A	Loading platform	10/1941	
Loading Platform	39-H	Loading platform- concrete type	1946	
Loading Platform	39-HA	Loading platform- log type	1946	
Log Building Details	143	Details- log buildings	8/1935	
Log Building Details	143	Log building details		
Log Siding or Log Bldg	1 & Alt.	Dwellings- log siding	1933-46	1946
Log Siding or Log Bldg	132-A-2	Cabin (log)	1935	
Log Siding or Log Bldg	132-A-2A	Cabin group- 6 units (log and frame)	1938	
Log Siding or Log Bldg	39-D	Warehouse (log type, large)	6/1941	
Log Siding or Log Bldg	7C	Guard dwelling (log)	1946	
Log Siding or Log Bldg	7-R	Dwelling (Plan 7 enlarged to four-room)	11/1941	
Lookout House	80	Lookout house, R-1 type		
Lookout House	86	Lookout house, Teton type		
Lookouts	80	Lookout house (similar to R-1, 14' x 14')	4/1933	
Lookouts	82	Lookout Building	4/1933	
Lookouts	85	Lookout Tower	4/1936	
Lookouts	86	Lookout house (Danskin Type)	6/1940	
Lookouts	104-B-4	Overlook Shelter (recreation structure)	5/1935	
Lookouts	104-B-5	Scenic point development	5/1935	
Lookouts	80-C	Plan for conversion of Plan 80, Lookout Building for winter Occupancy	2/1942	
Lookouts	81-A	Log Lookout- 10' x 10' inside, storeroom under	1/1941	
Lookouts	81-B	Log Lookout- 16' x 16' (catwalk around)	Incomplete	
Lookouts	81-C	Frame lookout- 10' x 10' inside	7/1941	
Lookouts	86-A	Lookout house (Bald Mountain Type)	8/1940	
Mess Halls & Dormitories	9	Mess house and dormitory	5/1933	
Mess Halls & Dormitories	10-A	Mess house and dormitory	6/1936	
Mess Halls & Dormitories	126-G-1	Mess house and kitchen (work camps)		
Mess Halls & Dormitories	126-G-A	Mess house and kitchen (work camps)	8/1939	



Type	Plan No.	Name	Issued	Revised
Mess Halls & Dormitories	126-J	Dormitory		1946
Mess Halls & Dormitories	126-K	Mess hall or assembly building	8/1939	
Mess Halls & Dormitories	126-R	Dormitory, organization camp	1942	
Mess Halls & Dormitories	126-S	Dining hall & kitchen, organization camp	1944	
Mess Halls & Dormitories	8-A	Mess house and dormitory	6/1938	
Mess Halls & Dormitories	9-B	Dormitory- guard station- storehouse	1946	
Nursery Building	41	Nursery Building	5/1939	
Offices	51	Office and storeroom (Ranger type)	3/1933	7/1935
Offices	53	Office and living rooms (Ranger Type), or office, storeroom		
Offices	54	Office (Supervisor type)	6/1933	2/1935
Offices	54	Office, revised into dwelling	1945	
Offices	126-C	Office Building (work camp)	4/1935	
Offices	51-B	Office and storeroom (alternate to Plan 51)	3/1935	12/1936
Offices	51-B	Heating Plan		
Offices	54-A	Office (Supervisor type)	6/1935	
Offices	54-B	Office (Supervisor type)	11/1937	
Offices	54-C	Office (Supervisor type)	3/1940	
Offices	54-E	Office building addition, one-room, (Supervisor type)	1945	
Offices	54-F	Office building addition, two-room, (Supervisor type)	1945	
Offices	54-G	Office building addition (Supervisor type) two rooms at left	1945	
Offices	54-H	Office heating plans	1945	
Offices	54-K	Office (Ranger type)	1946	
Oil Houses	95	Gas and oil house	1935	
Oil Houses	126-E	Gas and oil house (work camps)	1940	
Oil Houses	95-B	Small gas and oil house	1939	
Oil Houses	126-G-1C	Gas and oil house (work camps)	1946	
Oil Houses	95-A	Oil house (with load platform)	5/1935	
Parking Facilities	122B-1	Parking areas and turns, picnic grounds, resorts		
Parking Facilities	122B-2	Parking spurs-- types of camping units		
Playground Equipment	108	See-saw		
Playground Equipment	108	Swing		
Playground Equipment	111	Wading pool (circular)		
Playground Equipment	122	Playground layouts-- (Softball, basketball, volley ball and tennis)		
Playground Equipment	108A-2	Single unit see-saw		
Playground Equipment	108A-3	Three-unit swing		
Playground Equipment	108A-3A	Bearing plate for swing		

Type	Plan No.	Name	Issued	Revised
Playground Equipment	108D-1	Sand boxes		
Playground Equipment	111A-1	Wading pool (oval)		
Portals	64C-10	Forest boundary		
Portals	64C-12	Forest boundary, log, horizontal with cattle guard		
Portals	64C-13	Forest boundary portal		
Portals	64C-14	Forest boundary (inter-forest type)		
Portals	64C-15	Forest boundary, single stone pier		
Portals	64C-20	Entrance portal		
Portals	64C-21	Entrance portal		
Portals	64C-22	Entrance portal		
Portals	64C-23	Entrance portal		
Portals	64C-8	Forest boundary		
Portals	64C-9	Forest boundary		
Powder Houses	61	Powder house (portable- not for CCC use; in such cases use their plan)	4-1933	3-1934
Powder Houses	126-F	Powder House	1945	
Powder Houses	126-F1	Powder house look data	1945	
Powder Houses	126-FA	Explosive storage, caps, etc	1945	
Powder Houses	126-FA1	Powder house (DuPont Plan- our list, brick plan)		
Radio Buildings	126-R-1	Underground radio receiving station str.	1945	
Registration Booths	64A-2	Registration box "Please Register" log		
Scenic Development	104B-5	Scenic point development		
Screens	3	Screens for Standard buildings	1945	
Seats	106A-1b	Rustic seats, Uinta type		
Seats	69A-1	Rustic seats		
Septic Tanks	76	Septic tank and filter trench	6-1933	
Septic Tanks	76	Septic tank and filter trench		
Septic Tanks	76A	Septic tank and filter trench		
Septic Tanks	76-A	Septic tank and filter trench	6-1933	
Septic Tanks	76A-1	Septic tank and filter trench		
Septic Tanks	76-A-1	Septic tank and filter trench	5-1935	
Shelters	6	One-room cabin	3/1933	5/1934
Shelters	126	Equipment and truck shelter	2-1935	
Shelters	104A-1	Campground shelter		
Shelters	104A-10	Convertible log shelter		
Shelters	104A-11	Winter sports shelter snow basin		
Shelters	104A-12	Winter sports shelter 18 x 34 ft.		
Shelters	104A-13	Winter sports shelter 18 x 34 ft.- log slab		
Shelters	104A-1a	Method for partially closing-in shelter		
Shelters	104A-2	Campground shelter		
Shelters	104A-3	Campground shelter		
Shelters	104A-4	Shelter- group picnic tables		
Shelters	104A-5	Extensible, winter sports		
Shelters	104A-6	Winter sports shelter		

Type	Plan No.	Name	Issued	Revised
Shelters	104A-7	Covered seat Shelter		
Shelters	104B-1	Lean-to shelter, adirondack, rock		
Shelters	104B-2	Lean-to shelter, adirondack, log		
Shelters	104-B-2	Lean-to shelter	5-1935	
Shelters	104B-2A	Open Shelter- 3 walls		
Shelters	104-B-2a	Open shelter-three walls	5-1936	
Shelters	104B-4	Overlook shelter		
Shelters	104-B-1	Lean-to shelter	5-1935	
Shops	26	Combination one-car garage & shop	6-1935	
Shops	33	Combination shop and storeroom	6-1933	
Shops	39	Shop or warehouse	1945	
Shops	40	Blacksmith Shop	3-1933	5-1934
Shops	126-B	Blacksmith and machine shop (work camp)	4-1935	
Shops	126-BB	Maintenance shop- work camps	1946	
Shops	39-B	Shop - 40' x 100'	11-1940	
Shops	39-CA	Shop building for forests	1945	
Shops	39-CB	Equipment Building	1946	
Shops	39-L	Shop- utility building	1946	
Signs	64-C-43 to 47	Station headquarters- signs for colonial type structures	6-1940	
Signs	64D-10	Roadside, 1,2, and 3 way informational		
Signs	64D-19	Roadside information sign		
Signs	64D-20	Information sign		
Signs	64D-5	Recreational, within camp & picnic ground types		
Signs	64D-6	Roadside, distance to recreational areas (2 way)		
Signs	64D-7	Roadside, informational, to recreational areas		
Signs	64D-8	Roadside, approaching forest camp land and informational		
Signs	64D-9	Roadside, distance to recreation areas		
Signs	64D-11	Entrance, forest camp, picnic area, Ranger Station rustic type		
Signs	64-D-11	Station headquarters- signs for rustic type	3-1937	
Spark Arrester	119	Spark Arrester		
Spark Arresters	119	Spark Arrester	2-1941	
Steel Square	110			
Storerooms/Comb. Bldgs	21	Storeroom and two-car garage	4-1933	
Storerooms/Comb. Bldgs	23	Storeroom and one-car garage (For small cars only)	3-1933	5-1934
Storerooms/Comb. Bldgs	26	Storeroom and one-car garage	3-1933	5-1934
Storerooms/Comb.	33	Storeroom and combination shop	6-1933	

Type	Plan No.	Name	Issued	Revised
Bldgs				
Storerooms/Comb. Bldgs	34	Storeroom, garage, and barn	1-1934	5-1934
Storerooms/Comb. Bldgs	35	Garage & Equipment building	1935	1938
Storerooms/Comb. Bldgs	36	Storeroom and garage	6-1935	
Storerooms/Comb. Bldgs	38	Small storeroom	9-1937	
Storerooms/Comb. Bldgs	39	Warehouse or shop	1946	
Storerooms/Comb. Bldgs	51	Storeroom and office	7-1935	
Storerooms/Comb. Bldgs	53	Storeroom and office combination	6-1933	6-1934
Storerooms/Comb. Bldgs	63	Storeroom, frost-proof above ground and storeroom, cellar type	3-1933	5-1934
Storerooms/Comb. Bldgs	126-A	Storeroom (tool shed- work camp type)	4-1935	
Storerooms/Comb. Bldgs	126-G-1F	Storeroom (small portable building- work camp type)	3-1941	
Storerooms/Comb. Bldgs	33-A	Storeroom and three-car garage	4-1934	
Storerooms/Comb. Bldgs	33-A-1	Storeroom and garage	1-1941	
Storerooms/Comb. Bldgs	33-B	Storeroom and garage	5-1934	
Storerooms/Comb. Bldgs	33-C	Storeroom and garage	5-1934	
Storerooms/Comb. Bldgs	35-A	Garage and equipment building	1937	
Storerooms/Comb. Bldgs	35-B	Garage and equipment building	1938	
Storerooms/Comb. Bldgs	35-D	Storeroom (or warehouse) and garage	1939	
Storerooms/Comb. Bldgs	39-D	Warehouse & office (log)	1942	
Storerooms/Comb. Bldgs	54-K	Storeroom and office combination	1946	
Storerooms/Comb. Bldgs	81-A	Storeroom under lookout building	1-1941	
Storerooms/Comb. Bldgs	9-B	Dormitory, guard station, storehouse	1946	
Stoves	96A-1	Campground stove with rock facing		
Stoves	96A-2	Campground stove		
Stoves	96A-3	Campground stove		
Stoves	96A-4	Two-unit campground stove		
Stoves	96A-5	Convertible camp stove		
Swimming Pool	113	Swimming pool		
Swimming Pool	113A-1	Units 1, 2, 3, swimming pool		
Tables	97	Campground tables		
Tables	97A	Campground tables		

Type	Plan No.	Name	Issued	Revised
Tables	97B & C	Campground tables		
Tables	97D-2	Log picnic tables, 4 log top, portable		
Tables	97D-3	Table, log, stationary (letter size plates)		
Toilets	70	Single-unit, pit type toilet		
Toilets	71	Four-unit chemical type		
Toilets	72	Four-unit pit type comfort station		
Toilets	73	Five-unit comfort station, std. plumbing		
Toilets	74	8-unit type, std. plumbing		
Toilets	79	Plan of portable toilet		
Toilets	70A-2	Single-unit chemical		
Toilets	70B-1	Two-unit pit type toilet		
Toilets	70B-2	Two-unit standard plumbing type		
Toilets	70B-3	Two-unit chemical type		
Toilets	71A-2	Four-unit chemical type		
Toilets	71A-3	Four unit chemical type		
Toilets	71A-4	Four-unit chemical type		
Toilets	72B-1	Five-unit comfort station, std. plumbing		
Toilets	73B	Bath house and comfort station		
Toilets	70A-1	Single-unit latrine		
Towers	85	Lookout Tower	4-1936	
Trailers	126-N	Two-horse trailer	8-1939	
Trailers	126-O	One-horse trailer	1942	
Use of Steel Square	110	Data sheet "Use of Steel Square"	7-1933	
Warehouse	39	Shop and warehouse	1945	
Warehouse	35-D	Combination warehouse and garage	11-1937	
Warehouse	39-A	Semi-fireproof warehouse	2-1939	
Warehouse	39-C	Fire equipment warehouse	5-1940	
Warehouse	39-D	Log Warehouse	6-1941	
Warehouse	37	Warehouse (special R.O approval required)	7-1935	
Water Storage	114	Water storage tank- 10,000 gal. (rectangular shape)	2-1935	
Water Storage	114	Water storage- 10,000 gallon tank		
Water Storage	W-101	Water Storage tank variable sizes		
Water Storage	W-101	Water storage tank- variable sizes-round	4-1939	
Weather Instruments	100	Weather instrument shelter	4-1933	5-1934
Woodshed	66	Woodshed	4-1933	5-1934
Work Camp Buildings	125	Garbage can anchorage	1935	
Work Camp Buildings	126	Work camp layouts	1946	
Work Camp Buildings	148	CCC Camp Chair		
Work Camp Buildings	101A, B, C, D	Light plant data various size work camps	1946	
Work Camp Buildings	126-1A	25-man barracks work camps	1945	
Work Camp Buildings	126-A	Forest Service camp tool shed	1945	



Type	Plan No.	Name	Issued	Revised
Work Camp Buildings	126-B	Blacksmith and machine shop	1945	
Work Camp Buildings	126-BB	Maintenance Shop	1946	
Work Camp Buildings	126-C	Office Building, Supt. And Eng	1945	
Work Camp Buildings	126-D	Garage 20' x 105.5'	1935	
Work Camp Buildings	126-D-1	Garage 10 stall for F.S. work camps- 26 x 105.5	1945	
Work Camp Buildings	126-D-2	Equipment and truck shelter- 20' x 105.5'		
Work Camp Buildings	126-E	Gas and oil house	1945	
Work Camp Buildings	126-F	Powder House	1945	
Work Camp Buildings	126-F-1	Powder House lock date	1945	
Work Camp Buildings	126-FA	Powder House	1945	
Work Camp Buildings	126-FA-1	Powder house (Dupont Plan)		
Work Camp Buildings	126-G	Barracks	1933	
Work Camp Buildings	126-G-1	Mess hall and kitchen work camps	1945	
Work Camp Buildings	126-G-1AA	Duplex dwelling work camp	1945	
Work Camp Buildings	126-G-1AB	Recreation and first aid unit work camp	1945	
Work Camp Buildings	126-G-1AC	Single dwelling unit work camp	1945	
Work Camp Buildings	126-G-1AD	Single dwelling unit work camp	1945	
Work Camp Buildings	126-G-1B	Latrine, F.S. side camps- pit type	1945	
Work Camp Buildings	126-G-1C	Gas and oil house	1945	
Work Camp Buildings	126-G-1D	Bathhouse	1945	
Work Camp Buildings	126-G-1DD	Latrine, plumbing type	1945	
Work Camp Buildings	126-G-1E	Light and pump plant building	1945	
Work Camp Buildings	126-G-1F	Small portable building- meat or refg.	1945	
Work Camp Buildings	126-G-1H	Smell cook or bunkhouse	1945	
Work Camp Buildings	126-G-A	Mess hall and kitchen	1939	
Work Camp Buildings	126-H	Double Bunks	5-1936	
Work Camp Buildings	152-A, 39-H & 39-HA	Loading Platform	10-1941	
Work Shops	26	Combination single car garage and work shop	6-1935	
Work Shops	33	Combination shop and storeroom	6-1933	
Work Shops	39	Shop and warehouse	1945	
Work Shops	40	Blacksmith Shop	3-1933	5-1934
Work Shops	126-B	Blacksmith and machine shop, (work camps)	4-1935	
Work Shops	126-BB	Maintenance shops- work camps	1946	
Work Shops	39-B	Repair Shop	1941	
Work Shops	39-CA	Shop Building	1946	
Work Shops	39-H	Loading platform- concrete	1946	
Work Shops	39-HA	Loading platform- log	1946	
Work Shops	39-L	Shop utility building	1946	

## Appendix B: WSU Special Collections

The following text was compiled by staff of Stewart Library's Special Collections at Weber State University.

### ***MS 78, GEORGE NICHOLS COLLECTION***

This collection contains photographs, journals, scrapbooks, and architectural drawings of George Nichols. He was an architect for the U.S. Forest Service Building located in Ogden, Utah. He built ranger stations and park elements throughout Utah, Idaho and Wyoming. In this collection were also books from the International Correspondence Schools that were taken out of the collection and catalogued into Special Collections.

#### **BOX 1**

- Fd 1 Addresses of Nichols' Family and Friends
- Fd 2 Blueprints- Fish Transportation Can
- Fd 3 Blueprints- Forest Service Buildings
- Fd 4 Blueprints- Forest Service Exhibits
- Fd 5 Blueprints- Moorings
- Fd 6 Blueprints- Prince's Store
- Fd 7 Blueprints- Ranger Station Plan R-4, #1A
- Fd 8 Books- Building Construction Manual, Forest Service
- Fd 9 Books- Building Construction Manual, Forest Service

#### **BOX 2**

- Fd 1 Books- Data on Estimating
- Fd 2 Books- Handbook and Dictionary, Wilson Engineering Corp.
- Fd 3 Certificates- The American Legion
- Fd 4 Certificates- International Correspondence Schools: 1931, 1933, 1941
- Fd 5 Certificates- Kiwanis International
- Fd 6 Certificates- National Color Photographers Association
- Fd 7 Certificates- The National Society of Professional Engineers
- Fd 8 Certificates- Personalities of the West and Midwest
- Fd 9 Certificates- State of Utah, Department of Registration
- Fd 10 Certificates- The Society of American Military Engineers
- Fd 11 Certificates- Utah Society of Professional Engineers
- Fd 12 Certificates- U.S. Department of Agriculture
- Fd 13 Christmas Cards
- Fd 14 Correspondence from Clara Barnes to George: May 1, 1938
- Fd 15 Correspondence from Erma Caudill to George: January 1965
- Fd 16 Correspondence from Erma Caudill to George: June 28, 1965
- Fd 17 Correspondence from Erma Caudill to George: July 18, 1965
- Fd 18 Correspondence from Ivan Nichols to George: June 27, 1941
- Fd 19 Correspondence- Telegrams regarding the death of George's father
- Fd 20 Examples of Architecture Styles
- Fd 21 Journal 1939
- Fd 22 Journal 1940

#### **BOX 3**

- Fd 1 Journal 1941
- Fd 2 Journal 1942
- Fd 3 Journal 1943
- Fd 4 Journal 1944
- Fd 5 Journal 1945
- Fd 6 Journal 1946

Fd 7 Journal 1947  
Fd 8 Journal 1948  
Fd 9 Journal 1949

#### **BOX 4**

Fd 1 Journal 1950  
Fd 2 Journal 1951  
Fd 3 Journal 1952  
Fd 4 Journal 1953  
Fd 5 Journal 1954  
Fd 6 Journal 1955  
Fd 7 Journal 1956  
Fd 8 List of Plan and Consultant Jobs

#### **BOX 5**

Fd 1 Maps- Arizona and New Mexico  
Fd 2 Maps- Cache National Forest  
Fd 3 Maps- Challis National Forest  
Fd 4 Maps- Fishlake National Forest  
Fd 5 Maps- Idaho  
Fd 6 Maps- Kaibab National Forest  
Fd 7 Maps- New York, Westchester  
Fd 8 Maps- Sawtooth National Forest  
Fd 9 Maps- Targee National Forest  
Fd 10 Maps- Timpanogos Cave  
Fd 11 Maps- Union Pacific System  
Fd 12 Maps- Unita National Forest  
Fd 13 Maps- Utah  
Fd 14 Maps- Wastach National Forest  
Fd 15 Maps- Wyoming  
Fd 16 Memo from District 4  
Fd 17 Misc- Ogden Movie Club Envelope  
Fd 18 Newsletters- Alumni Bulletin: 1928  
Fd 19 Newsletters- Construction Hints  
Fd 20 Newsletters- Daily News  
Fd 21 Newsletters- Intermountain Reporter  
Fd 22 Newsletters- Old Timers News  
Fd 23 Newspaper Articles  
Fd 24 Notecards  
Fd 25 Notecards

#### **BOX 6**

Fd 1 Pin- U.S. Forest Service  
Fd 2 Plans for Ranger Station  
Fd 3 Plans for Winter Sports Area, Alta  
Fd 4 Plaque- United Airlines 100,000 Mile Club  
Fd 5 Programs- Annual University of Utah Roundup of Engineers: 1934  
Fd 6 Programs- 8<sup>th</sup> Biennial Convention of National Association of Retired Civil Employees: 1964  
Fd 7 Programs- Engineering Annual Banquet: 1925, 1927-1928  
Fd 8 Publications- "Analysis of Financial Statements"  
Fd 9 Publications- "California Redwood: The Western Wood for Eastern Homes"  
Fd 10 Publications- Department of Commerce  
Fd 11 Publications- "Ellington Piano"  
Fd 12 Publications- "Farm and Stock-Raising Utah"  
Fd 13 Publications- "Forestry in the Pacific Northwest"  
Fd 14 Publications- "Forestry in the South"

- Fd 15 Publications- "Grand Canyon National Park"
- Fd 16 Publications- "How I Handle My Biggest Business Problems"
- Fd 17 Publications- "Humidity in the Home"
- Fd 18 Publications- "In Praise of Brick and Oak"
- Fd 19 Publications- Portland Cement Association
- Fd 20 Publications- "The Properties of Cement-Sawdust Mortars, Plain, & with Various Admixtures"
- Fd 21 Publications- "Report on Interior Building Construction"
- Fd 22 Publications- "Torrential Floods in Northern Utah: 1930"
- Fd 23 Publications- "Tree Planting Book"
- Fd 24 Publications- "U.S. Department of Agriculture Bulletin 1077"

#### **BOX 7**

- Fd 1 Publications- "U.S. Department of Agriculture Circulars 61, 71, 98, 239"
- Fd 2 Publications- "U.S. Department of Agriculture Farmers Bulletins 744, 750, 1381, 1482"
- Fd 3 Publications- "U.S. Department of Agriculture Forest Services"
- Fd 4 Publications- "U.S. Department of Agriculture Misc. Publications 90, 185"
- Fd 5 Publications- "The Utah Engineer"
- Fd 6 Publications- "Who Wins & Why: The President's Story"
- Fd 7 School- Answers to Examination Questions
- Fd 8 School- Chemistry High School Notebook: 1915-1916
- Fd 9 Scrapbook- Barns, Garages, Warehouses

#### **BOX 8**

- Fd 1 Scrapbook- Buildings and Drafting Students
- Fd 2 Scrapbook- Correspondence with Western Moline Plow & The Phonograph Shop
- Fd 3 Scrapbook- Exhibits and Parades
- Fd 4 Scrapbook- Exhibits: 1922-1956

#### **BOX 9**

- Fd 1 Scrapbook- Forest Service Buildings
- Fd 2 Scrapbook- Kiwanis Club
- Fd 3 Scrapbook- National Forests Buildings, Outhouses, Bridges, and Drinking Fountains

#### **BOX 10**

- Fd 1 Scrapbook- Nichols Body of Work
- Fd 2 Stickers- Kaibab National Forest
- Fd 3 Stickers- Timpanogos Cave

#### **BOX 11 PHOTOGRAPHS**

- Fd 1 Aerials
- Fd 2 Afton, Wyoming
- Fd 3 Ashley National Forest
- Fd 4 Bank of Ben Lomond
- Fd 5 Boise National Forest
- Fd 6 Buildings- Campsites
- Fd 7 Buildings- Campsites
- Fd 8 Buildings- Construction
- Fd 9 Buildings- Garages
- Fd 10 Buildings- Interiors
- Fd 11 Buildings- Lookout Towers
- Fd 12 Buildings- Military
- Fd 13 Buildings- Multiple Houses
- Fd 14 Buildings- Nichols Home
- Fd 15 Buildings- Partial Shots
- Fd 16 Buildings- Public

Fd 17 Buildings- Single Homes  
Fd 18 Buildings- Single Homes  
Fd 19 Buildings- Snowbound  
Fd 20 Buildings- Trailer  
Fd 21 Cache National Forest  
Fd 22 Caribou National Forest  
Fd 23 Cedar Breaks  
Fd 24 Central Fire Station  
Fd 25 Challis National Forest

**BOX 12**

Fd 1 Christmas Cards  
Fd 2 Deer Park  
Fd 3 DeLamar, NV  
Fd 4 Desert Range  
Fd 5 Dixie National Forest  
Fd 6 Exhibits  
Fd 7 Farmington Canyon  
Fd 8 Ferron Reservoir  
Fd 9 Fishlake National Forest  
Fd 10 Forest Service Building- Missoula, Montana  
Fd 11 Great Basin National Forest  
Fd 12 Idaho City  
Fd 13 Idaho National Forest  
Fd 14 Kaibab National Forest  
Fd 15 Kesler's IGA  
Fd 16 Landscapes- Animals  
Fd 17 Landscapes- Bridges  
Fd 18 Landscapes-Campsites  
Fd 19 Landscapes- Forests  
Fd 20 Landscapes- Lakes and Rivers  
Fd 21 Landscapes- Misc.  
Fd 22 Landscapes- Mountains  
Fd 23 Landscapes- Oceans  
Fd 24 Landscapes- Southern Utah  
Fd 25 Lemhi National Forest  
Fd 26 Manti National Forest  
Fd 27 Nevada National Forest  
Fd 28 New York  
Fd 29 Parades  
Fd 30 Paramount Cleaners  
Fd 31 Payette National Forest  
Fd 32 People  
Fd 33 Pine Valley, UT  
Fd 34 Pioneer Fire Station  
Fd 35 Powell National Forest

**BOX 13**

Fd 1 Rocky Bar Ranger Station  
Fd 2 Salmon National Forest  
Fd 3 San Isabel National Forest, CO  
Fd 4 Sawtooth National Forest  
Fd 5 Sullivan Memorial Gardens  
Fd 6 Surveyor Park, WY  
Fd 7 Targhee National Forest  
Fd 8 Teton National Forest



- Fd 9 Tick Creek
- Fd 10 Timpanogos Cave
- Fd 11 Unita National Forest
- Fd 12 V. T. Park
- Fd 13 Wasatch National Forest
- Fd 14 Webster Flat
- Fd 15 Weiser National Forest
- Fd 16 Wyoming National Forest
- Fd 17 Zealand National Forest, New Hampshire
- Fd 18 Negatives- 16 mm
- Fd 19 Negatives- Buildings
- Fd 20 Negatives- Christmas
- Fd 21 Negatives- Christmas Cards
- Fd 22 Negatives- Family
- Fd 23 Negatives- Ideas for Buildings, 1958-59
- Fd 24 Negatives- Misc.
- Fd 25 Negatives- Misc.
- Fd 26 Negatives- Nichols Home: 1955
- Fd 27 Negatives- San Diego

**BOX 14 OVERSIZE**

- Fd 1 Photograph- Forest Service, Intermountain Region: March 20, 1935
- Fd 2 Blueprint- Forest Service Building
- Fd 3 Blueprint- Experiment Station
- Fd 4 Blueprint- Forest Service Dwelling
- Fd 5 Blueprint- Forest Service 3 Bedroom Dwelling

**MAPCASE**

- Blueprint- Lake Hotel Drawing

***MS 133, GEORGE L. NICHOLS ARCHITECTURAL/MECHANICAL DRAWINGS COLLECTION***

George L. Nichols' early work includes examples of Mechanical Drawing Class Exercises dating from 1912 when he studied at the Salt Lake High School Department.

Title Page	Mechanical Drawings Plates - Salt Lake High School Drawing Department 1912	
Plate 1-2	Corner Mortise and Tenon Joint; Half Lap-T-Joint	
Plate 5	Tool Racks	
Plate 6	Work Bench	
Plate 7	Details of Bench	
Plate 8	Lettering Sample - C. W. Reinhardt	
Plate 9	Lettering Sample - C. W. Reinhardt	<b>MS 133-A</b>
Plate 10	Tip Cat - Coves - Beads	
Plate 11	Cylinder Coves, Cone, Bead	
Plate 13	Mallet	
Plate 14	Picture Frame & Wiring	
Plate 16	Rosette and Box	
Plate 19	Details of Pedestal	
Plate I	Isometric Drawing of 3" Cube	
Plate II	Isometric Drawing of Steps	
Plate III	Isometric Drawing of Blocks	

Plate IV	Isometric Drawing from Plan & Elevation	
Plate V	Perspective Diagram	
Plate VI	Perspective Diagram	<b>MS 133-B</b>
Plate VII	Perspective Diagram	
Plate VIII	Perspective Diagram	
Plate IX	Perspective Diagram	
Plate X	Perspective Diagram	
Plate VII	Details of Window Frames - Wooden Building - 2 pages (May 1913)	
Plate XI	Helix Concept & Development Drawing	
Plate XII	The Helix applied to construction of the "V" Thread-Conventional Threads	
Plate XIV	Original linen and 1 print - SLTHS Forge Work	
Plate XV	SLTHS Forge Work	
Plate XV	Pin Tray - Vice Handle	
Plate XVI	Crane Chain - Table for Eye Bolts	
Plate XVII	Dumb Bell	
Plate XVIII	Pedestal	
Plate XVIII	Fundamental Curves for Gearing	
Plate XX	Cylinder & Ball	
Plate XX	Gearing (April 15, 1914)	
Plate XXI	Gearing (May 1914)	
Plate XXI	Ball in Frame	
Plate XXII	Cone, Ball, Cube (May 1, 1912)	
Plate XXIII	Wrench (April 25, 1912)	
Plate XXV	Library Table	
Plate XXVI	Isometrics (1915)	
Plate XXVII	Isometrics (1912)	
Plate XXVIII	Shading within figures (1912)	
Plate XXXI	Lettering sample - "If" by Rudyard Kipling	
Plate XXXII	Cross Hatch shading	
Plate XXXIII	Metal Symbols	
Plate XXXIV	Masonry Symbols (1912)	
Plate XXXV	Geological Symbols	

**MS 133- C** Second set of Ink on Heavy Paper - Geometric Figures (Descriptive Geometry Class Exercises?)  
- Plates I, III, 4, V, VI, VII, VIII, IX, X; Plates A, B, C, D, F, G, H

**MS 133-D** 2 blueprint drawings - Pacific Salmon - Trout, Charr or Atlantic Salmon (1924)

1 ink on linen drawing "Cooperative Agreement between U. S. Forest Service, Boise National Forest and Boy Scouts of America"

1 original and 1 Vandyke (black) print drawing of silhouettes and poetry "Youth"

1 original and 1 Vandyke (black) print illustrated poem "The Night Meeting"

1 original and 1 Vandyke (black) print 1923 Studebaker Automobile advertisement

1 original ink on cardstock paper advertisement for Sucrene Dairy Feed

2 black print maps Kaibab National Forest and Grand Canyon National Game Preserve

Booklet U. S. Forest Service	8-page 4" x 5" booklet on Payette National Forest Information for Campers	<b>MS 133-1</b>
---------------------------------	---	-----------------

Form U. S. Forest Service Drafted by G. L. Nichols 1924	1 vellum print Relative Humidity and Evaporation Record 1924	<b>MS 133-2</b>
Map of Proposed Mill Site U. S. Forest Service Mapped by Nord & Favre Drafted by G. L. Nichols 1924	3 blue print copies Map of a Proposed Mill Site at Heise, Idaho Boise Meridian	<b>MS 133-3</b>
Tourist Map of Eastern Idaho and Western Wyoming U. S. Forest Service Prepared by District No. 4 Ogden, Utah 1924 Compiled and Traced by G. L. Nichols	1 Vandyke vellum print 1 blue print Tourist Map of Eastern Idaho and Western Wyoming	<b>MS 133-4</b>
Map of Southern Idaho and Western Wyoming U. S. Forest Service District 4 - Ogden, Utah Compiled and Traced by G. L. Nichols 1925	1 print Map of Southern Idaho and Western Wyoming	<b>MS 133-5</b>
National Forests Map U. S. Forest Service Region 4 - Ogden, Utah Compiled by H. M. Shank G. L. Nichols Traced by G. L. Nichols Date: 1932	4 copies Map of National Forests of the Southern Half of the Intermountain Region	<b>MS 133-6</b>
Ashley National Forest Map U. S. Forest Service Compiled at District Office Ogden, by H. M. Shank and G. L. Nichols 1927 Traced by G. L. Nichols 1927	4 copies U. S. Geological Survey Map Ashley National Forest, Utah & Wyoming Salt Lake, Uinta Special, and Sixth Principal Meridians 1928	<b>MS 133-7</b>
Cache National Forest Map U. S. Forest Service Compiled at Regional Office Ogden by H. M. Shank M. H. Lewis 1931 Traced by G. L. Nichols 1932	1 original ink on linen vellum drawing U. S. Geological Survey Map Cache National Forest - Idaho and Utah Boise and Salt Lake Meridians 1932 (Linen backed by Geological Survey Map of Washington D. C. area surveyed 1913-1915)	<b>MS 133-8</b>
Challis National Forest Map U. S. Forest Service Compiled at District Office Ogden, Utah by G. L. Nichols S. Udell 1926 Traced by G. L. Nichols 1927	2 copies U. S. Geological Survey Map Challis National Forest, Idaho Boise Meridian 1927	<b>MS 133-9</b>

Challis National Forest Map U. S. Forest Service Compilation revised by M. W. Bird 1929 Traced by G. L. Nichols 1930	3 copies U. S. Geological Survey Map Challis National Forest, Idaho Boise Meridian 1930	<b>MS 133-10</b>
Fishlake National Forest Map U. S. Forest Service Compiled at Regional Office Ogden, by Sprague T. Simons Traced by Sprague T. Simons and G. L. Nichols 1925 Revised 1931	1 original ink on linen vellum drawing 4 copies U. S. Geological Survey Map Fishlake National Forest, Utah Salt Lake Meridian 1931	<b>MS 133-11</b>
Idaho National Forest Map U. S. Forest Service Compiled at District Office Ogden, by T. R. Littlefield 1925 Traced by G. L. Nichols 1926	4 copies Map of Idaho National Forest Boise Meridian	<b>MS 133-12</b>
Kaibab National Forest Map U. S. Forest Service Compiled at District Office by H. M. Shank 1926 Traced by G. L. Nichols	6 copies U. S. Geological Survey Map Kaibab National Forest, Arizona Gila and Salt River Meridian	<b>MS 133-13</b>
Payette National Forest Map U. S. Forest Service Compiled at District Office Ogden, 1924 by T. R. Littlefield Revised by A. L. Anderson and G. L. Nichols 1927-28 Traced by G. L. Nichols 1927-28	8 copies U. S. Geological Survey Map Payette National Forest, Idaho Boise Meridian 1928	<b>MS 133-14</b>
Sawtooth National Forest Map U. S. Forest Service Compiled at District Office Ogden, Utah 1923 Revised & Traced by G. L. Nichols 1926	2 copies U. S. Geological Survey Map Sawtooth National Forest, Idaho Boise Meridian	<b>MS 133-15</b>
Targhee National Forest Map U. S. Forest Service Compiled at Regional Office Ogden by C. J. Truscott 1931/32 Traced by G. L. Nichols M. W. Bird 1932	1 original ink on linen vellum drawing U. S. Geological Survey Map Targhee National Forest - Idaho and Wyoming Boise and Sixth Principal Meridians 1932	<b>MS 133-16</b>
Toiyabe National Forest Map U. S. Forest Service Compiled at Regional Office Ogden, Utah, 1927-28 Traced by G. L. Nichols 1928 Revised by G. L. Nichols 1930-31	1 print U. S. Geological Survey Map Toiyabe National Forest, Nevada Mt. Diablo Meridian 1931	<b>MS 133-17</b>

Weiser National Forest U. S. Forest Service Compiled at Washington Office 1922 Revised at District Office 1925 by	16 copies U. S. Geological Survey Map Weiser National Forest, Idaho Boise Meridian 1925 T. R. Littlefield and G. L. Nichols	<b>MS 133-18</b>
---	---	------------------

<u>STRUCTURE</u>	<u>DRAWINGS</u>	<u>CALL NO.</u>
------------------	-----------------	-----------------

Dwelling, 6-Room with Garage	1 artist's rendering	<b>MS 133-19</b>
------------------------------	----------------------	------------------

Dwelling and Garage U. S. Forest Service Varied Locations Date: 1950	1 set of 13 drawings Floor Plan, Foundation Plan, Elevations and Sections, Details, Bill of Materials and Specifications	<b>MS 133-20</b>
---	--	------------------

Region 1 Offices and Rocky Mountain Forest and Range Experiment Station U. S. Forest Service Missoula, Montana Designer: G. L. Nichols Date: 1934	21 sheets Title, Schedule of Building Needs, General Conditions and Specifications, Approach Plan, Floor Plans, Details and Elevations, Mechanical Layout and Details	<b>MS 133-21</b>
---	---	------------------

Automotive Shop U. S. Forest Service Region 3 - R3 58A Designer: G. L. Nichols Date:	6 sheets Floor Plan, Elevations, Door/ Window/Material and Finish Schedules, Foundation Plan, Details, Sections, Heating Plan	<b>MS 133-22</b>
--	---	------------------

Automotive Shop U. S. Forest Service Region 3 Designer: G. L. Nichols Date: 1956 (Stamped)	3 sheets - Preliminary Drawings Steel Frame Building - Sections, Foundation Plan, Heating Plan 6 sheets - Working Drawings (2 copies each) Floor Plan, Elevations, Door/Window and Finish Schedules, Footing and Foundation Plans, Roof and Wall Sections, Deck Floor Plan, Heating Plan	<b>MS 133-23</b>
--	--	------------------

Barn, 2-Horse with Hay Storage U. S. Forest Service Region 3 Designer: G. L. Nichols Date: 1956	1 Sheet - 4 copies Preliminary Floor Plan and Elevations 1 Sheet - 2 copies Foundation and Floor Plans, Elevations, Sections and Details 17 pages typed Specifications	<b>MS 133-24</b>
---	---	------------------

Barn, 3-Horse with Hay Storage U. S. Forest Service Designer: G. L. Nichols Date: 1956	1 Sheet - 2 copies Foundation and Floor Plans, Elevations, Sections and Details 10 pages typed Specifications 2 Preliminary Schemes - 2 copies each	<b>MS 133-25</b>
---	---	------------------

Dwelling, 3-Bedroom U. S. Forest Service Region 3 Designer: G. L. Nichols Date: 1955	4 Preliminary Schemes	<b>MS 133-26</b>
Dwelling, 3-Bedroom U. S. Forest Service Region 3 Designer: G. L. Nichols Date: 1956	Sheets 1 and 2 of 4 - Plan 3A2 Sheets 1, 2 and 3 of 4 - Plan 3A3 Plans, Elevations, Details and Schedules	<b>MS 133-27</b>
Equipment Storage Building U. S. Forest Service Region 3 - R3 28A1 Designer: G. L. Nichols Date:	3 sheets Floor Plan, Elevations, Details, Door/ Window and Finish Schedules, Foundation Plan, Sections, and Details	<b>MS 133-28</b>
Equipment Storage Proposal U. S. Forest Service Region 3 Designer: G. L. Nichols Date: 1955	1 Sheet - Floor Plans and Elevations	<b>MS 133-29</b>
Glenwood Ranger Station Office U. S. Forest Service Gila National Forest, N.M. Designer:	1 print - Sheet 6 of 6 sheets Foundation Plan, Floor Plan, Elevations, Sections, Details, Electrical and Finish Schedules	<b>MS 133-30</b>
Residence, 2-Bedroom U. S. Forest Service Region 3 - Plan R3-2 Designer: G. L. Nichols	3 sets of 3 sheets Plan and Elevations, Door and Window Schedules, Exterior and Interior Materials and Finish Schedules, Foundation Plan, Sections, Heating Plan, Door Details 2 extra copies - Sheet 1 of 3 1 extra copy - Sheet 2 of 3 2 extra copies - Sheet 1 of 3 Plan 2A 1 extra copy - Sheet 2 of 3 Plan 2A	<b>MS 133-31</b>
Residence, 2-Bedroom U. S. Forest Service Region 3 Designer: G. L. Nichols	4 copies - Sheet 1 of 3 sheets - Revised Plans Floor Plan, Elevations, Sections, Door and Window Schedules, Interior Materials and Finish Schedules	<b>MS 133-32</b>
Springerville Proposed Shop U. S. Forest Service Apache National Forest, Ariz. Designer: G. L. Nichols Date: 1955	4 prints (1 colored) Proposed Floor Plan and Elevations 1 print each Scheme 1 2 prints each Schemes 2 and 3	<b>MS 133-33</b>

Automotive Central Repair Shop U. S. Forest Service Cedar City, Utah Designer: C. Spaun Approved: G. L. Nichols Date: 1939	4 sheets Floor Plan, Basement and Footing Plans, Sections and Details, Elevations	<b>MS 133-34</b>
Automotive Central Repair Shop U. S. Forest Service Region 4 - Reno, Nevada Designer: C. Spaun Approved: G. L. Nichols Date: 1939	1 set of 4 Drawings Sheet 3 included in Cedar City Shop set Floor Plan, Basement and Footing Plans, Elevations and Details	<b>MS 133-35</b>
Automotive Central Repair Shop Heating Plants Region 4 - Reno, Salt Lake City, Cedar City, Boise Designer: C. E. Crane Approved: G. L. Nichols Date: 1939	1 copy each of Sheets 5 and 6 of 6 Sheets Main Floor and Piping Plan, Boiler Piping Detail, Alternate Arrangements of Rear Wing for each site, Heating Layout	<b>MS 133-36</b>
Automotive Central Repair Shop Region 4 - Salt Lake City, Boise Designer: C. Spaun Approved: G. L. Nichols Date: 1939	1 set of 4 Drawings Floor Plan, Basement and Footing Plans, Sections, Elevations and Details	<b>MS 133-37</b>
Barn, 2-Horse U. S. Forest Service Region 4 Designer: G. L. Nichols Date: 1933 1 sheet Electrical Layout 1 sheet Plumbing Layout	1 set of 6 Architectural Drawings Plans and Elevations and Details, Foundation and Framing Plan and Sections, Alternate Concrete Floor Construction Plan, Specifications and Bill of Materials	<b>MS 133-38</b>
Barn, 4-Horse U. S. Forest Service Region 4 Designer: G. L. Nichols Date: 1933	1 set of 8 Drawings Floor Plans, Elevations, Details, Foundation Plan, Floor Framing, Bill of Materials, Methods of Construction, Specifications, Electrical Layout, Materials List	<b>MS 133-39</b>
Barn, 6-Horse U. S. Forest Service Region 4 Designer: G. L. Nichols Date: 1933	1 set of 7 Drawings Floor Plan, Elevations, Details, Foundation Plan, Floor Framing, Bill of Materials, Specifications, Electrical Layout, Materials List	<b>MS 133-40</b>
Blacksmith Shop U. S. Forest Service Region 4 - Plan 40 Checked by G. L. Nichols Date: 1933	4 sheets Plans and Elevations, Details and Sections, Bill of Materials	<b>MS 133-41</b>



<p>Campground Drinking Fountain  U. S. Forest Service  Region 4 - Plan 98  Checked by G. L. Nichols  Date: 1933</p>	<p>2 sheets  Plan, Elevations, Bill of Materials, Specifications</p>	<p><b>MS 133-42</b></p>
<p>Campground Entrance Sign  U. S. Forest Service  Region 4 - Plan 64C  Checked by G. L. Nichols  Date: 1933</p>	<p>1 sheet  Plan, Elevations, Bill of Materials</p>	<p><b>MS 133-43</b></p>
<p>Campground Shelter  U. S. Forest Service  Region 4 - Plan 104  Checked by G. L. Nichols  Date: 1933</p>	<p>4 sheets  Plan, Elevation, Rendering, Sections,  Bill of Materials, Specifications</p>	<p><b>MS 133-44</b></p>
<p>Campground Stove  U. S. Forest Service  Region 4 - Plan 96  Checked by G. L. Nichols  Date: 1933</p>	<p>1 sheet  Plans, Side and Bottom Views,  Sections, Details, Specifications</p>	<p><b>MS 133-45</b></p>
<p>Campground Tables  U. S. Forest Service  Region 4 - Plans 97A,B,C  Checked by G. L. Nichols  Date: 1933</p>	<p>2 sheets  Plans, Elevations, Details,  Perspective, Bill of Materials</p>	<p><b>MS 133-46</b></p>
<p>Cattle Guard - 15-Ton Capacity  U. S. Forest Service  Region 4 - Plan 67  Checked by G. L. Nichols  Date: 1933</p>	<p>2 sheets  Plans, Sections, Elevations,  Pit Construction, Bill of Materials, Specifications</p>	<p><b>MS 133-47</b></p>
<p>Cattle Guard - Under 3 Tons  U. S. Forest Service  Region 4 - Plan 67A  Checked by G. L. Nichols  Date: 1933</p>	<p>1 sheet  Plans, Elevations, Section, Bill of Materials, Specifications</p>	<p><b>MS 133-48</b></p>
<p>Cellar - Hillside  U. S. Forest Service  Region 4 - Plan 62  Checked by G. L. Nichols  Date: 1933</p>	<p>4 sheets  Plan, Sections and Elevations,  Schedule of Reinforcing Steel, Bill of Materials</p>	<p><b>MS 133-49</b></p>
<p>Cellar, Cold Storage - Above Grd  U. S. Forest Service  Region 4 - Plan 63  Checked by G. L. Nichols  Date: 1933</p>	<p>6 sheets  Floor and Foundation Plans, Elevations,  Cross Sections and Details, Framing,  Bill of Materials, Specifications</p>	<p><b>MS 133-50</b></p>

Challis Office Building U. S. Forest Service Region 4 - Plan 53 Revised Designer: G. L. Nichols Date: 1947	Sheet 1 of 1 Heating Plan	<b>MS 133-51</b>
Comfort Station, 4-Unit Chemical U. S. Forest Service Region 4 - Plan 71 Checked by G. L. Nichols Date: 1933	10 sheets Floor Plan, Elevations, Details, Sections, Framing, Bill of Materials, Specifications	<b>MS 133-52</b>
Comfort Station, Four-Unit Pit U. S. Forest Service Region 4 - Plan 72 Checked by G. L. Nichols Date: 1933	10 sheets Floor Plan, Elevations, Details, Sections, Framing, Bill of Materials, Specifications	<b>MS 133-53</b>
Dwelling, 2-3 Bedroom Type U. S. Forest Service Region 4 - Plan 1C-3 Designer: G. L. Nichols Date: 1949	1 set of 18 drawings Floor Plan, Window and Door Schedules, Foundation Plan, Heating Plan, Details, Sections, Elevations, Electrical and Plumbing Layouts, Specifications	<b>MS 133-54</b>
Dwelling, 3-Bedroom U. S. Forest Service Region 4 - Plan R-4-1C-1 Designer: G. L. Nichols Date: 1945	21 sheets - 3 copies each Floor Plan, Elevations, Door and Window Schedules, Basement Plan, Sections, Details, Plumbing Plan and Schedules, Electrical Layout and Material Schedule, Mechanical Plan and Bill of Materials, Construction Materials List, Specifications	<b>MS 133-55</b>
Dwelling, 3-Bedroom U. S. Forest Service Region 4 - Plan R-4-1C-2 Designer: G. L. Nichols Date: 1945	Sheets 1 through 18 of 22 Floor Plan, Elevations, Door and Window Schedules, Basement Floor Plan, Details and Sections, Plumbing Heating and Electrical Layouts and Specifications, Bill of Materials	<b>MS 133-56</b>
Dwelling, 4-Bedroom /No Bsmt U. S. Forest Service Region 4 - Plan 1A Checked by G. L. Nichols Date: 1933	11 sheets Floor Plan, Elevations, Details, Foundation Plan, Milling, Framing, Bill of Materials, Specifications	<b>MS 133-57</b>
Dwelling, 6-Room U. S. Forest Service Region 4 Designer: G. L. Nichols Date: 1936	19 sheets Construction Drawings First Floor Plan and Elevations, Second Floor Plan and Elevations, Basement Floor Plan and Foundation Plans, Elevations, Framing Plan and Details, Sections, Bill of Materials, Specifications, Plumbing Layout, Heating and Air Conditioning Plan and Specifications, Electrical Layout and Specifications	<b>MS 133-58</b>

<p>Dwelling and Garage Combo.  U. S. Forest Service  Region 4 - Plan 1C-7  Designer: G. L. Nichols  Date: 1950</p>	<p>1 set of 14 drawings  Floor Plan, Window and Door Schedules,  Construction Notes, Foundation Plan, Details  and Sections, Elevations, Millwork  Details, Heating Layout, Bill of Materials, Specifications</p>	<p><b>MS 133-59</b></p>
<p>Dwelling - Guard Station  1-Room  U. S. Forest Service  Region 4 - Plan 4  Checked by G. L. Nichols  Date: 1933</p>	<p>6 sheets  Plans and Elevations, Details and  Sections, Framing, Bill of Materials</p>	<p><b>MS 133-60</b></p>
<p>Dwelling - Guard Station  2-Rooms  U. S. Forest Service  Region 4 - Plan 7  Checked by G. L. Nichols  Date: 1933</p>	<p>7 sheets  Plans and Elevations, Details and  Sections, Framing, Bill of Materials,  Cabinet Details, Specifications</p>	<p><b>MS 133-61</b></p>
<p>Dwelling - Ranger Station  U. S. Forest Service  Region 4 - Plan 1  Checked by G. L. Nichols  Date: 1933</p>	<p>11 sheets  Floor Plan, Elevations, Details,  Foundation Plan, Milling, Framing,  Bill of Materials, Specifications</p>	<p><b>MS 133-62</b></p>
<p>Dwelling - Ranger Station  Summer Headquarters  U. S. Forest Service  Region 4 - Plan 2  Checked by G. L. Nichols  Date: 1933</p>	<p>8 sheets  Floor Plans, Elevations, Sections and  Details, Framing, Millwork, Bill of  Materials, Specifications</p>	<p><b>MS 133-63</b></p>
<p>Dwelling - Ranger Station  U. S. Forest Service  Caribou National Forest  Soda Springs, Idaho  Designer: G. L. Nichols  Date: 1952</p>	<p>1 set of 10 drawings  Plot Plan, Site Description, Floor Plan,  Basement Floor Plan, Wall and Building  Sections, Elevations, Heating Plan,  Cabinetry Details, Specifications</p>	<p><b>MS 133-64</b></p>
<p>Dwelling - Ranger Station  U. S. Forest Service  Ashley National Forest  Vernal, Utah  Designer: G. L. Nichols  Date: 1952</p>	<p>1 set of 12 drawings  Plot Plan, Site Description, Floor Plan,  Elevations, Wall and Building Sections,  Heating Plan, Cabinetry Details,  Specifications</p>	<p><b>MS 133-65</b></p>
<p>Equipment Building  U. S. Forest Service  Region 4 - Plan R-4 39CB  Designer: G. L. Nichols  Date: 1946</p>	<p>1 set of 9 drawings  Floor Plan, Foundation Plan, Elevations,  Details, Framing, Specifications, Bill of Materials</p>	<p><b>MS 133-66</b></p>

<p>Fences and Gates  U. S. Forest Service  Region 4 - Plan 65  Checked by G. L. Nichols  Date: 1933</p>	<p>3 sheets  Plan, Elevation, Bill of Materials, Specifications</p>	<p><b>MS 133-67</b></p>
<p>Fly Shed  U. S. Forest Service  Region 4 - Plan 14  Checked by G. L. Nichols  Date: 1933</p>	<p>2 sheets  Plans and Elevations, Bill of Materials, Specifications</p>	<p><b>MS 133-68</b></p>
<p>Garage, 1-Car  U. S. Forest Service  Region 4 - Plan 24  Checked by G. L. Nichols  Date: 1933</p>	<p>4 sheets  Plans, Elevations, Details and  Sections, Bill of Materials, Specifications</p>	<p><b>MS 133-69</b></p>
<p>Garage, 1-Car and  Woodshed or Small Shop  or Storeroom Combination  U. S. Forest Service  Region 4 - Plan 23  Checked by G. L. Nichols  Date: 1933</p>	<p>5 sheets  Plans and Elevations, Framing, Details,  Sections, Bill of Materials, Specifications</p>	<p><b>MS 133-70</b></p>
<p>Garage, 2-Car  U. S. Forest Service  Region 4 - Plan 20  Checked by G. L. Nichols  Date: 1933</p>	<p>6 sheets  Plans and Elevations, Details and  Sections, Bill of Materials,  Specifications</p>	<p><b>MS 133-71</b></p>
<p>Garage, 2-Car/Storeroom  U. S. Forest Service  Region 4 - Plan 21  Checked by G. L. Nichols  Date: 1933</p>	<p>5 sheets  Plans, Elevations, Sections and  Details, Framing, Bill of Materials,  Specifications</p>	<p><b>MS 133-72</b></p>
<p>Kamas Ranger District Office  U. S. Forest Service  Wasatch National Forest  Region 4  Designer: W.R.T.  Date: 1957</p>	<p>Sheet 1 of 1 - Floor Plan and Elevation  of Rest Room Addition to Plan A46</p>	<p><b>MS 133-73</b></p>
<p>Latrine - Single Unit  U. S. Forest Service  Region 4 - Plan 70  Checked by G. L. Nichols  Date: 1933</p>	<p>3 sheets  Plan, Elevation, Framing, Details,  Bill of Materials, Specifications</p>	<p><b>MS 133-74</b></p>

<p>Lookout House  U. S. Forest Service  Region 4 - Plan 80  Traced from Region 1 Plan L-4  Checked by G. L. Nichols  Date: 1933</p>	<p>10 sheets  Floor and Framing Plans, Elevations,  Details, Sections, Materials Lists,  Bill of Materials, Specifications  (Shows rafter cuts to be made with carpenter square)</p>	<p><b>MS 133-75</b></p>
<p>Lookout Tower/Living Qtrs.  U. S. Forest Service  Region 4 - Plan 82  Traced from Region 1 Plan T-20  by G. L. Nichols  Date: 1933</p>	<p>3 sheets  Front and Side Elevations, Details, Plan of  Tower Platform, Sections and Details,  Bill of Materials, Specifications</p>	<p><b>MS 133-76</b></p>
<p>Naval Ordnance Plant  Pocatello, Idaho  Planner: G. L. Nichols  Date: 1943</p>	<p>1 set of 33 drawings, indexed, including  Planting Plans for Flower Gardens, Rock  Gardens, Diagrammatic Planting Schemes, Planting Lists, Elevations  showing plantings and plans for special structures and features</p>	<p><b>MS 133-77</b></p>
<p>Office/Storeroom/Bedroom  U. S. Forest Service  Region 4 - Plan 51  Checked by G. L. Nichols  Date: 1933</p>	<p>6 sheets  Plans &amp; Elevations, Framing and  Foundation Plans, Details, Bill of  Materials, Specifications</p>	<p><b>MS 133-78</b></p>
<p>Office Building  U. S. Forest Service  Region 4 - Plan 54  Designer: MWB  Date: 1933</p>	<p>Sheet 2 of 2 - Electrical Work  Sheet 2 of 2 - Plumbing Work  Sheet 9 of 10 - Bill of Materials  Sheet 10 of 10 -Specifications</p>	<p><b>MS 133-79</b></p>
<p>Office Building  U. S. Forest Service  Region 4 - Plan 54B  Checked by G. L. Nichols  Date: 1937</p>	<p>Sheets 9 and 10 of 10  Bill of Materials and Specifications  1 sheet Notes on Insulation</p>	<p><b>MS 133-80</b></p>
<p>Office Building  U. S. Forest Service  Region 4 - Plan 54 Addition  Checked by G. L. Nichols  Date: 1937</p>	<p>Sheet 1 - Basement Plan, Rear Elevation  Sheet 3 - Floor Plan, Door and Window  Schedules, Stairway Section</p>	<p><b>MS 133-81</b></p>
<p>Office Building  U. S. Forest Service  Region 4 - Plan 54B  Checked by G. L. Nichols  Date: 1937-38</p>	<p>Sheets 6, 7, 8, 9 and 10 of 10  Bill of Materials and Specifications  Sheet 1 of 1 (2 copies) Plumbing  Sheet 12 of 12 Basement Floor Plan  1 Sheet Notes on Insulation</p>	<p><b>MS 133-82</b></p>
<p>Office Building  U. S. Forest Service  Region 4 - Plan 54  Designer: G. L. Nichols</p>	<p>Sheets 1 and 2 of 2  Special Heating Layout  Jackson Headquarters  Teton National Forest</p>	<p><b>MS 133-83</b></p>

Date: 1942

Office Building - 54E  
One-Room Addition to Office  
Building Plans 54 & 54B  
U. S. Forest Service  
Designer: G. L. Nichols  
Date: 1945

Sheets 4, 5, 6, 7 and 8 of 8  
Specifications and Bill of Materials  
Sheet 3 of 10 - Elevations  
Sheet 5 of 10 - Elevations

**MS 133-84**

Office Building - 54F  
U. S. Forest Service  
Designer: G. L. Nichols  
Date: 1945

Sheets 9 and 10 of 10  
Two-Room Addition to Office Building  
Plans 54 & 54B  
Bill of Materials

**MS 133-85**

Office Building  
U. S. Forest Service  
Region 4 - Plan 54H  
Designer: G. L. Nichols  
Date: 1945

Sheets 1 and 3 of 3  
Floor Plan, Bill of Materials, Specifications  
for Heating and Air Conditioning

**MS 133-86**

Office Building  
U. S. Forest Service  
Region 4 (Nevada)  
Designer: G. L. Nichols  
Date: 1935

19 sheets - 2 copies each  
Floor Plan, Elevations, Door and Window  
Schedules, Basement Plan, Footings and  
Foundation, Framing Plans, Details and Sections,  
Bill of Materials, Specifications for erection by Forest Service;

**MS 133-87**

Alternate Specifications for erection under Contract, Heating and Air Conditioning Specifications and Plans, Attic  
Plan and Details, Electrical Plans and Specifications, Plumbing Plans

Office - Revised for Dwelling  
U. S. Forest Service  
Region 4 - Mackay, Idaho  
Designer: G. L. Nichols  
Date: 1948

Specifications for Changes to Plan 54  
3 Sheets of set of 5 to change the building  
into a dwelling at Mackay, Idaho

**MS 133-88**

Powder House  
U. S. Forest Service  
Region 4 - Plan 61  
Checked by G. L. Nichols  
Date: 1933

2 sheets  
Plan, Sections and Elevations, Bill of Materials

**MS 133-89**

Quarters for Inspector of  
Ordnance in Charge  
Naval Ordnance Plant  
Pocatello, Idaho  
Designer: G. L. Nichols  
Ray Hunter  
Date: 1942

15 sheets - Construction Drawings  
First and Second Floor Plans, Millwork Details,  
Interior and Exterior Elevations, Basement  
Floor Plan, Door and Window Schedules, Wall  
Section, Window Details, Electrical and Plumbing  
Layouts, Heating Plan  
2 copies of Garage Plan, Elevations and Details

**MS 133-90**

Quarters for Inspector of  
Ordnance Senior Assistant  
Naval Ordnance Plant  
Pocatello, Idaho  
Designer: G. L. Nichols  
Ray Hunter  
Date: 1942

13 sheets - Construction Drawings  
First and Second Floor Plans,  
Door and Window Schedules, Millwork  
Details, Basement Floor Plan, Sections  
and Details, Wall Section, Elevations,  
Window Details, Electrical Layout,  
Heating and Plumbing Layouts, Garage  
Plan, Details and Sections

**MS 133-91**

Shop Building U. S. Forest Service Region 4 Designer: G. L. Nichols Date: 1945	22 sheets - 2 copies each Floor Plan, Elevations, Foundation Plan, Light Details, Wall Sections, Plumbing Layout and Details, Roof Truss Elevation, Sections, Materials List, Specifications and Materials List or Heating and Air Conditioning, Bill of Materials, Specifications for erection by Forest Service, Specifications for erection under contract	<b>MS 133-92</b>
Shop or Warehouse U. S. Forest Service Region 4 Designer: G. L. Nichols Date: 1938	8 sheets Construction Drawings Floor Plan, Elevations, Cross Section, Framing and Truss Plans, Concrete Wall Sections and Elevations, Door Details, Bill of Materials, Specifications	<b>MS 133-93</b>
Utility Building "B" U. S Forest Service Region 4 - Salt Lake City, Boise, Cedar City, Reno Designer: HWC, Approved GLN Date: 1939	2 sheets Floor Plan, Foundation Plans, Elevations, Sections, Details, Roof Plan	<b>MS 133-94</b>
Warehouse, Office, Shop and Equipment Storage Proposal U. S. Forest Service	9 sheets Specifications and Special Conditions, Floor Plans, Elevations	<b>MS 133-95</b>
Weather Instrument Shelter U. S. Forest Service Plan 100 Region 4 Checked by G. L. Nichols Date: 1933	3 sheets Plan, Elevations, Sections, Details, Bill of Materials	<b>MS 133-96</b>
Plan 101 U. S. Forest Service Checked by G. L. Nichols Date: 1933	1 sheet of Specifications for Electrical Wiring	<b>MS 133-97</b>
Apartment Motel, 2-Unit U. S. Forest Service Region 5 Designer: KBJ Date: 1952	1 sheet Floor Plan, Elevations, Window Schedule	<b>MS 133-98</b>
Barn, Adobe, 2-Horse U. S. Forest Service Region 5 Designer: KBJ Date:	1 sheet Floor Plan, Elevations, Sections, Details, Window Schedule	<b>MS 133-99</b>
Barn, 2-Stall U. S. Forest Service Region 5 - Pine Flat Designer: Date: 1951	2 sheets Preliminary Sketch #3 Floor Plan, Elevations	<b>MS 133-100</b>



<p>Gas &amp; Oil Canopy U. S. Forest Service Region 5 Designer: KBJ Date: 1951</p>	<p>1 sheet Plans, Elevations, Details</p>	<p><b>MS 133-101</b></p>
<p>Residence, 2-Bedroom U. S. Forest Service Region 5 - Pine Flat Designer: Date: 1951</p>	<p>2 sheets Preliminary Sketch #13 Floor Plan, Elevations</p>	<p><b>MS 133-102</b></p>
<p>Residence, 3-Bedroom U. S. Forest Service Region 5 Designer: KBJ Date: 1952</p>	<p>Sheets 1, 2, and 3 of 8 Sheets Floor Plan and Elevations, Foundation Plan and Details</p>	<p><b>MS 133-103</b></p>
<p>Dormitory, BD-27 U. S. Forest Service Region 5 Designer: Date: 1955</p>	<p>1 set Specifications 11 pages General Specifications 1 page (2 sides) Excavation Specifications 1952 2 pages (2 sides) Concrete Masonry 1951 4 pages (2 sides) Carpentry &amp; Millwork 1952 1 page (2 sides) Roofing 1952 2 pages (2 sides) Plumbing 1952 12 pages (2 sides) Portland Cement Concrete 1953 2 pages (2 sides) Reinforcing Steel</p>	<p><b>MS 133-104</b></p>
<p>Building Study and Schedule U. S. Forest Service Region 6 Spokane, Washington Designer: G. L. Nichols Date: 1935</p>	<p>12 sheets - Schedule of building needs of Forest Service and Experiment Station</p>	<p><b>MS 133-105</b></p>
<p>Poole Advertising Inc. Office/Shop Building Wall Avenue Ogden, Utah Designer: G. L. Nichols Date: (No. 159)</p>	<p>2 sheets - 7 copies each Floor Plan, Elevations, Foundation and Heating Plan, Wall Sections, Details</p>	<p><b>MS 133-106</b></p>

## Bibliography

- Alumni Bulletin*, January 1923, April 1926, and 1930. Newsletter for Region 4 retirees. Region 4 History Collection. Stored in Weber State University Archeology Lab. Ogden, Utah.
- Appointment Record for George Lee Nichols. Region 4 History Collection. Stored in Weber State University Archeology Lab. Ogden, Utah.
- Butler, John, co-worker of George Lee Nichols. Telephone interview by author, 20 July 2006.
- Cemetery Burials Database. Accessed at [[www.history.utah.gov/apps/burials](http://www.history.utah.gov/apps/burials)] on 12 July 2006.
- George L. Nichols Architectural/ Mechanical Drawings Collection, MS 133. Special Collections, Stewart Library, Weber State University. Ogden, Utah.
- George Lee Nichols Collection, MS-78. Special Collections, Stewart Library, Weber State University. Ogden, Utah.
- Gossette, Annette Nichols, daughter of George Lee Nichols. Telephone interview by author, 18 August 2006.
- Grosvenor, John R. *A History of the Architecture of the USDA Forest Service*. USDA Forest Service Engineering Staff Publication EM-7310-8. Washington, DC: Government Printing Office, 1999.
- Johnson, Michael D. *A Sociocultural Perspective on the Development of US Natural Resource Partnerships in the 20<sup>th</sup> Century*. USDA Forest Service Proceedings. RMRS-p-13, 2000. Accessed at [www.fs.fed.us/rm/pubs/rmrs-po13](http://www.fs.fed.us/rm/pubs/rmrs-po13) on 2 August 2006.
- "Lest We Forget, Our World War Heroes," Ogden, Utah, 1927. In possession of Nancy Nichols Moyes.
- Moffett, Wilden, regional architect following William Turner. Telephone interview by author, 11 July 2006.
- Nichols, George L. "Buildings Then and Now by Nick." Scrapbook. Region 4 History Collection. Stored in Weber State University Archeology Lab. Ogden, Utah.
- Nichols, George L. "Our Building: A Record of Facts and Events." Scrapbook. Region 4 History Collection. Stored in Weber State University Archeology Lab. Ogden, Utah.
- Nichols, George W. Telephone interview by author, 14 September 2006.

*Old Timers News*. Newsletter of Region 4 Retirees Club. Region 4 History Collection. Stored in Weber State University Archeology Lab. Ogden, Utah.

"Personal History and Family Record of George Nichols, 1952." In possession of Nancy Nichols Moyes.

*Polk Directory*, 1918. Utah State Historical Society. Salt Lake City, Utah.

"Red and Black Year Book, 1916." West and East High School. In possession of Nancy Nichols Moyes.

*Salt Lake Tribune*. 16 July 1933.

*Standard Examiner* (Ogden). 22 February 1934.

*Standard Examiner* (Ogden). 10 May 1972

Turner, William, regional architect following George Lee Nichols. Telephone interview by author, 11 July 2006.

USDA Forest Service. *Improvement Handbook*. n.p.: 1937.

Williams, Gerald W. *The USDA Forest Service: The First Century*. Publication FS-650. Washington, DC: USDA Forest Service, 2000.

Wilson, Richa. *Within a Days Ride: Forest Service Administrative Sites in Region 4, 1891-1960*. USDA Forest Service, Intermountain Region, June 2004.

WWI Military Service Cards. Microfilm series #85268, reel #28 and series #85268, reel #92. Utah State Historical Research Center. Salt Lake City, Utah.