

CCC REVIEW

A weekly newspaper devoted to the interest of the Forest, Soil Erosion and CCC Camps in Montana, North Idaho and East Washington
 NUMBER 159
 WEDNESDAY, DECEMBER 15, 1937
 VOLUME 9

PICTURE PARADE IN LEWISTON DISTRICT

Journey Starts With Trip to Pete King and O'Hara Stations

LEWISTON, Idaho, Dec. 5.— Leaving off last week with Co. 5705 at Bungalow Ranger station, we next go to Lowell, Idaho, where company 5704 has their quarters. The road to the camp was muddy but passable after leaving Lowell the last six miles was fine, but there is a crew working on the road this side of Lowell. The camp is located on the Selway river and a beautiful spot it is. Lt. Geo. O. Shoemaker is in command of this camp, and at our visit there he was on leave and visiting in California.

Lt. Harold C. Wohlner was in charge of the company. These boys from Arkansas and North Dakota have several large work projects, including building a double ranger station which will house both the Pete King and O'Hara stations, improving the Boyd fish hatchery, building a road up the Middle Fork, putting in a water system for the station, and building a telephone line from Grangeville to Elk City.

Loud Speaker Installed

A loud speaker system has been installed at the camp and is proving very popular. A dandy bunch of pictures were taken at this camp and will appear in the Pictorial Review of the camps in the Lewiston district being published by the CCC Review. Lt. Geo. O. Shoemaker, Jr., is camp commander. Lt. Harold C. Wohlner is Adjutant, Mr. Delbert Cox is forest superintendent, Mr. S. T. Brannock is educational advisor and Dr. Hiram Gallagher is

the contract surgeon. After staying all night at this camp we leave the next day for Rig-gins and company 1293, known as the Pollock camp, located about two miles south of Rig-gins on the main highway. Here Captain F. C. Finch has 150 enrollees from New Jersey and Delaware. They are building a fire prevention road in the Nez Perce national forest. Lt. Bennett is the second officer in charge with Dr. Neal J. Phillips the contract surgeon, Mr. A. W. Foskette, the camp supt. and Mr. Marius P. Hanford the camp educational advisor. The educational program here is going on full swing with all classes having a fine attendance. A number of fine pictures were taken here and will appear in the Picture Parade of the Lewiston district.

On To Pomeroy

Our next stop is at the Gar-field camp at Pomeroy, Wash., where Lt. W. C. Marcum has 164 enrollees from Ohio, West Virginia, and Kentucky. Mr. W. M. Kerchner is educational advisor and Mr. Eldridge Bacon camp supt., with Lt. S. M. R. Salvaggio camp surgeon. This company is engaged in Soil Erosion work near Pomeroy. We stopped all night at this camp and the following day took a large number of dandy pictures of the men and of camp and the work projects. They will appear later in the Pictorial Review being published by the CCC Review.

Next Is Dayton

Our next stop was made at

company 545 at Dayton, Wash. Here we had very bad weather and will have to take the pictures the following week, however we secured several pictures of the work projects and the camp picture but the group will be taken this week. Our next move is to camp Walla Walla, company 1761 with Captain H. S. Jones in charge, Lt. Robt. Nordley, adjutant, and Dr. E. L. Bolts, contract surgeon, Mr. R. C. Williams, camp supt., and A. C. Voelker, the educational advisor. This camp is one of the show camps in the Lewiston district and the 185 enrollees from Arkansas, Kansas, Minnesota and North Dakota are very proud of this camp. Due to the days getting dark early the camp superintendent had the crews come in early at noon and a dandy picture was taken of this fine bunch of fellows. Two days were spent in and around this camp and many fine pictures were taken and will appear in the Pictorial Review of this district. We leave you now and more will follow next week.

Co. 229 Has Basketball Team

ST. MARIES, Idaho—Co. 229 has organized a basketball team and the first game was played last week with Potlatch. The CCC team lost 20 to 30 but as this was the first game of the season the members did not have much practice but they are improving a great deal and expect to have a top notch team this fall and winter.

HEAD GIVES TIP ON SOIL SAVING

Emery Tells Meeting Conservation Work Should Be of Hardest

"We are living in a glass house, we of a federal organization, and ours should be of the hardest work, and never an act of which we should be afraid," yesterday said Charles P. Emery of Washington, D. C., assistant chief, personnel and training division of the soil conservation service.

Addressing the concluding meeting of a three-day regional conference yesterday of soil conservation from Washington, Idaho and Oregon, he warned of the high ideals before the service and the public attention focused upon it.

"Never Command Any One"

Mr. Emery, a veteran of a quarter century work in the training of men and personnel work, told the management organization in the operation of soil conservation and in the interest of leadership, "never to command any one." It just doesn't work in the promotion of service efficiency, he cautioned the conservation chiefs, as the feelings engendered are much "like those arising when some one pushes you aside in a street car."

Mr. Emery sharply defined between leaders and bosses, the latter having no place in the organization as "leadership for service" is the objective. For those who do not fit in with the work of their department, he suggested they be transferred to some other department, but "don't fire them."

Must Work Together

He told the executives they all must be big enough to work together to attain the utmost efficiency, that the service may

Retrenchment Plans to Close 3 CCC Camps

Abandonment of three civilian conservation corps camps in the Inland Empire has been ordered by Robert Fechner, director of conservation, a Washington correspondent reported yesterday.

Camps to be abandoned are Camp F-142, Kalispell bay, Priest lake, in the Fort Wright district; Camp S-40, St. Regis, Mont., in the Fort Missoula district; and Camp F-115, Whitebird, Idaho, in the Lewiston district. Men from the abandoned camps will be used, as much as possible, to fill out other companies which may not be at full strength.

The move is a part of the president's budget - balancing program and the fact that the Inland Empire loses only three camps out of the 104 to be cut from the lists indicates the importance in which the work in this area is held.

The Kalispell Bay camp has been in operation for three years. Its company will move to Camp F-159, Blow Down No. 2, only a mile away, while the Blow Down company will be broken up for replacements in other camps.

take its big part in saving the soil.

W. T. White, agronomist of the Spokane office, presided. Three local officials spoke. R. C. Fury, assistant personnel officer of the Spokane conservation offices, told of discipline problems. Camp administration by the project was the topic of A. W. Middleton, regional CCC administrator, while C. R. Briggs, supervisor in charge of educational work at the Spokane office, spoke on "You and the Public."

Soil Conservation Leaders Confer In Spokane



Among those in leading roles in yesterday's concluding regional soil conservation conference were, left to right: Claude Arnold, personnel officer, prominent in the calling of the conference; P. C. McGrew, associate conservator, both of the Spokane office, and Charles P. Emery, assistant chief, personnel and training division, Washington, D. C., principal speaker.

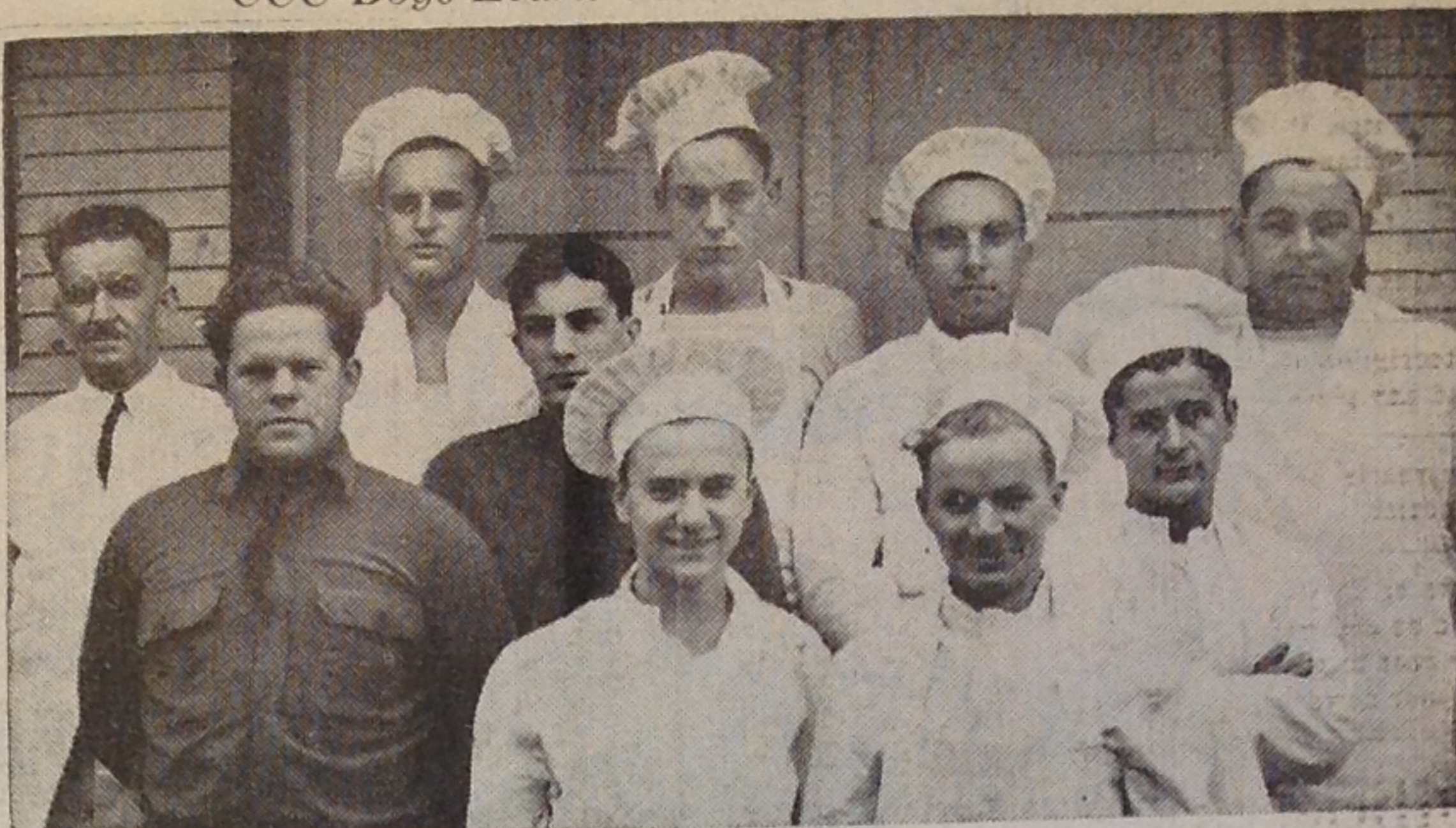
FREE—The CCC Review published a Pictorial Review of all CCC camps in the Missoula district in September. We have 41 books on hand. There are 200 pictures of the various camps and scenes of Montana in this book which contains 84 pages, and bound in a beautiful green cover. We are going to give them away free with each subscription to the CCC Review for six months. All you have to do is send one dollar for a six months subscription to the paper and you will receive one of these beautiful books free. You can have the paper sent to any address in the United States, just state where you want it sent. Send one dollar to Box 413, CCC Review, Spokane, Wash., and get in on this offer. Remember, one book free with each subscription to the paper as long as the 41 books last.

Forest Supervisors, Region One

Major Evan W. Kelley, Regional Forester
Missoula, Montana

Name of Sup.	Hdqs. Town	Name of Forest
G. E. Martin	Livingston, Mont.	Absaroka
W. B. Willey	Dillon, Mont.	Beaverhead
G. M. Brandborg	Hamilton, Mont.	Bitterroot
A. H. Abbott	Thompson Falls, Mont.	Cabinet
W. J. Derrick	Billings, Mont.	Custer
C. A. Joy	Butte, Mont.	Deer Lodge
J. C. Urquhart	Kalispell, Mont.	Flathead
J. C. Whitham	Bozeman, Mont.	Gallatin
J. N. Templer	Helena, Mont.	Helena
K. A. Klehm	Libby, Mont.	Kootenai
R. T. Ferguson	Great Falls, Mont.	Lewis and Clark
E. H. Myrick	Missoula, Mont.	Lolo
R. A. Coster	Orofino, Idaho	Clearwater
C. D. Simpson	Coeur d'Alene Idaho	Coeur d'Alene
R. A. Phillips	Grangeville, Idaho	Nez Perce
J. E. Ryan	Sandpoint, Idaho	Kaniksu
R. R. Fitting	St. Maries, Idaho	St. Joe

CCC Boys Learn Ins and Outs of Kitchen Work



Just about ready to step out into commercial life with a thorough understanding of the work this group represents graduates of the Seven Mile CCC cooks and bakers' school. Possibly the proudest person of the group is Mess Sergeant T. W. Walker, long time in the regular army, and conductor of the school, whose likeness appears in back row, left. To right are: John Wilson and Robert Newcomb, mess stewards; John Poczatek, cook; Ben Richey, first baker, and Michael Lotina, cook. Rear, left to right: Instructor Walker, Harry Pocyntyluk, cook; William Vandergrift, baker; Orville Hubbell, first cook, and Charles Miller, baker.

Spokane, Dec. 14th.—Today was graduation day for the Cooks and Bakers at the Seven Mile Camp. Nine young men training under Mess Sergeant T. W. Walker, received their diplomas today and to celebrate the event, they prepared and served a sumptuous dinner. We wish them well in the commercial world.

Soil Conservation Wins on 100,000 Acre Test

Soil conservation operations on a 100,000-acre demonstration project in the vicinity of Moscow, Idaho, is resulting in an increase in the production of cattle and hogs, according to a statement issued from the Spokane office of the soil conservation service.

The number of cattle in the project area has increased 30 per cent since 1933 and the hog population has increased 48 per cent, the statement asserted.

The statement continued: Livestock increases have come as a result of the planting of large acreages of grass and legume crops to check erosion and replenish soil fertility.

Since the erosion control project was established in 1934 approximately 10,000 acres of steep and eroded land has been seeded to permanent crops of alfalfa and grass, and another 10,000 acres of cultivated land to sweet clover, both for pasture and green manure crops. Three years ago there was little or no sweet clover used for pasture in the Palouse project. Today, sweet clover pasturage is common.

"XYZ" Correspondence

"XYZ" correspondence is the name given to the dispatches in 1797-98 of three American commissioners to France containing the demands of Talleyrand and other members of the French directorate as the price of respect to the United States government.

Old Fort Location

Old Point Comfort, originally called Cape Comfort by the English settlers who established the first permanent colony at Jamestown, has been continuously fortified for a longer period than any other spot in the United States.

Gives In to Majority

A wise man is best satisfied when he finds that the same argument which weighs with him has weighed with thousands before him, and is such as has borne down all opposition.

See Christmas Tree As Product of Farm

PORT ANGELES, Wash.—Growing Christmas trees may become just as much a farm crop venture as growing wheat or potatoes, if experiments being conducted by the United States forest service are successful.

Civilian Conservation Corps men, supervised by Ranger J. M. Mapes, are planting 62,000 Douglas fir seedlings on Olympic peninsula logged-off land, spacing them but four or five feet apart instead of the usual eight-foot spacing used for general reforestation.

When the baby trees reach a suitable height they will be marketed as Christmas trees, and a close check on all costs of the project will be available to show whether "Christmas tree farming" could be made a profitable agricultural enterprise.

John Bunyan Described

John Bunyan, the author of the famous "Pilgrim's Progress," is described as a tall, red-haired man, stern of countenance, quick of eye and mild of speech, who as a boy was very fond of swearing.

Cathedral Turrets Removed

Two turrets on the top of the Christ church gateway of Canterbury cathedral, in England, were removed more than 100 years ago by a rich banker so he could see the cathedral clock from his home.

ACT NOW!

Take advantage of the Federal Housing Loan while lumber is

STILL DOWN

ESTIMATES FREE

LUMBER AND BUILDERS SUPPLIES

Standard Lumber Co.

DISHMAN, WASH.

Phone Wall 1216

SHOUFLER'S PLACE

CAFE IN CONNECTION

DRAFT & BOTTLED BEER

CIGARS — TOBACCO — CANDIES

Plummer,

Idaho

Language for the United States

A discussion arose in the Continental congress as to whether the German or the English language should be used in the colonies and a motion was made in favor of using the German language, but the matter never came to a vote. It was only in Pennsylvania that the German element was more than a small minority before the Revolution, perhaps a third of the settlers in that state being Germans. Although the German language persisted in Pennsylvania, the English stock outnumbered all the others from the years 1760 to 1790.

Filipino Not Ambitious Man

The Filipino is not an ambitious man—it's too hot to be ambitious. To them, the siesta, or afternoon nap during which silence is preserved by custom and law, is not a frittering away of time by a lazy people. It is just that it is so hot the year around that energy saps away. But while the Filipino naps, the Chinese works.

Battle of Kites

Japanese kites are flown by groups of boys in Japan in competitions, or "kite battles." All sorts of decorative kites are made, light but quite strong, with special lines treated with a ground glass and glue mixture which makes them very sharp. In a battle the idea is to see who can maneuver his string against the string of another kite, cutting it so that it will fall to the ground. The boy who causes the most kites to fall wins.

Barnacles

Probably one of the world's greatest scavengers is the white barnacle, which gather in thousands upon bottoms of ships and is thus transported to all parts of the globe.

Baby's Nervous System

A baby's nervous system is in no way connected with his mother's nervous system before birth, so no shocks can be transmitted; if no shocks, there can be no marks, says Hygeia, the Health Magazine.

Maru Old Word

"Maru" is one of the oldest words in the Japanese language. It has the specific meaning of "circle" or "ring," with the general connotation of "all-embracing" or "all-surrounding." As the ocean encircles the island empire, the word "Maru" is particularly appropriate as a designation for the Japanese mercantile marine.

Sound Bubbles Evolve Light

Bubbles in water give off light when they are caused by high-pitched sound. The light is faint, and is cold like a glowworm's luminescence.

Fine Lace and Embroidery

The Canary Islands, off the north-west coast of Africa, a Spanish possession, is noted for the making of fine lace and embroidery.

Platinum Wires in Lamps

Platinum was the first metal used in the wires of electric lamps.

Swell Sleep!

Don't you want to enjoy sweet, heavy sleep? Then get in the best of health. CHINESE HERBS are a natural tonic. Try them yourself—right away.

WING WO

CHINESE MEDICINE CO.
N. 126 1/2 Wall St. Main 5542
SPOKANE

TAYSTIE DURUM SEMOLINA PRODUCTS

Cut Macaroni, Large Cut Macaroni, Cut Spaghetti, Seashell, Salad Cuts, Coll Spaghetti and Goll Vermicelli

Manufactured by U.S. Macaroni Mfg. Co.
E. 601 Pacific — Spokane, Wash.

If you want the best in MEN'S CLOTHING, SHOES and FURNISHINGS see DAVIS & LINK
St. Maries Idaho

SEND YOUR DRY CLEANING and LAUNDRY to IDAHO LAUNDRY AND CLEANING CO.
St. Maries Idaho

SPRAGUE ENGRAVING CO.

SPOKANE, WASH.

Service To CCC Camps

Order your CIGARETTES — TOBACCO — CANDY from

P. M. JACOY

402 Sprague Ave.

Spokane

Make this your headquarters when in town

McCLINTOCK - TRUNKEY CO.

Spokane, Washington

Coeur d'Alene, Idaho

Headquarters for Complete CCC Camp Supplies

CANDIES, TOBACCOS, CIGARS, PIPES, STATIONERY, PENCILS, INKS, GLUE, FANCY and STAPLE GROCERIES

Quick Service on "Call Orders"

Orders for shipment via rail or truck given prompt attention

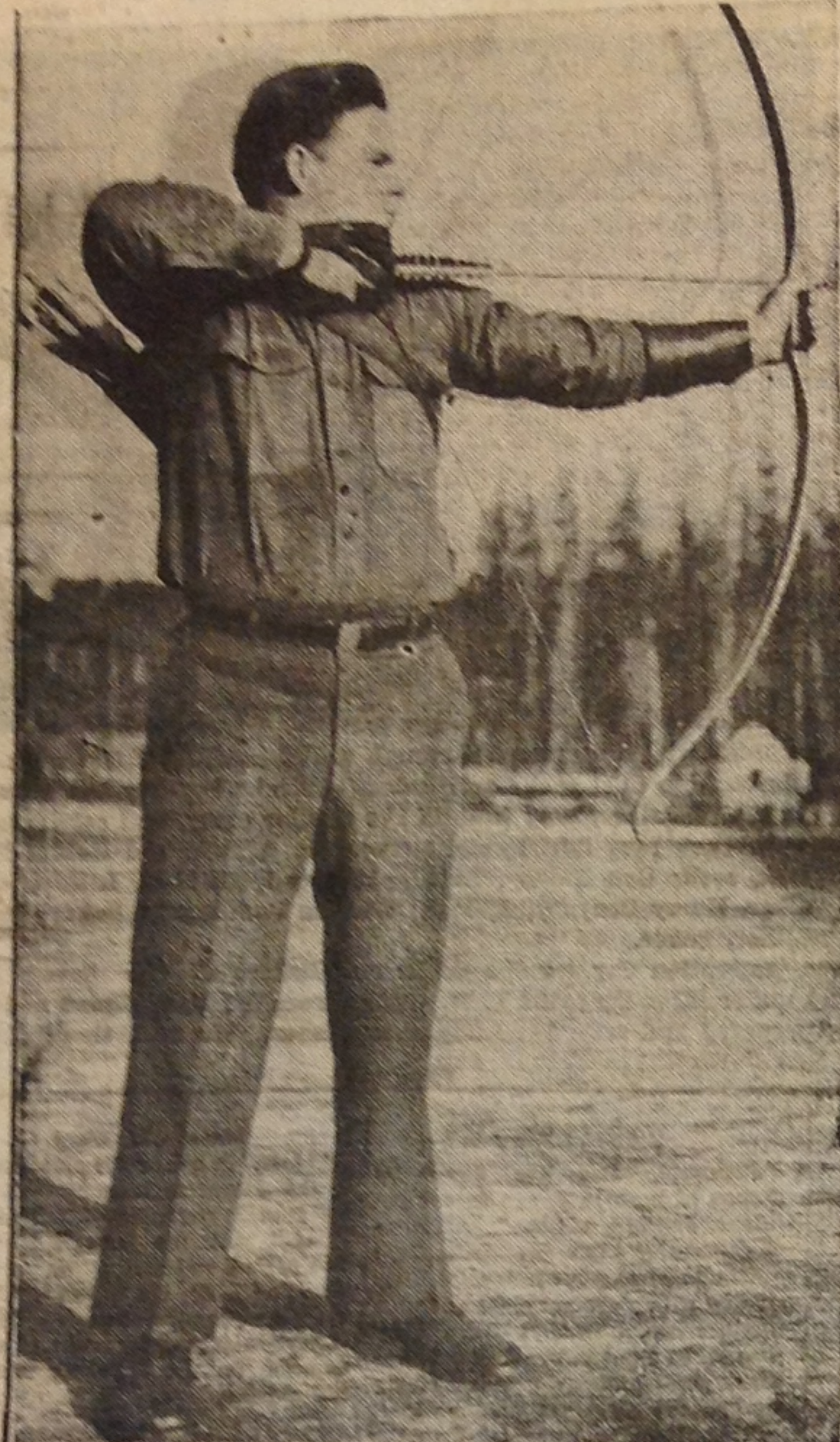
NOTABLE GU AT COMP

By George I
Company 594
ored many times b
ed visitors, but it
honored October
Congressman Whit
Congressman Char
of the state of Id
Regional Forester
Kelly, visited cam
J. Ryan, Forest
is a frequent vis
when in this vicin
eral forest servic
accompanied him,
ed for dinner.
Trimble and Capt
son, of District
and Mr. Dow of
Idaho, also remain
ner. The guests w
on a tour of the
which many comp
marks were passed
for the entire gro
served at 7:30 p.
special occasion, t
was decorated a
tables set for the
personnel of the c
led into the hall, a
men Clark and W
triduced. They sp
conditions of the
ho, and the benefi
state was deriving
CCC camps within
aries. Major Kelly
the men and gave
fine heart to hea
plaining the value
ing they were re
urged the men, no
the job was they
to do it well, and
flity and ingenuity
up, which would
promotion to a
tion in 1936. Capt.
ways a favorite wi
spoke on doing th
life well, and quot
by a well known fr
the common things
commonly well," a
semed to convey a
the boys, and give
look which they ma
sed in the past.
Capain Gleeson sta
major factor of ev
ful man's life. Th
the company had
120 replacements,
had an opportunity
ing fully acquainte
in camp here in J
the morale consider
were well pleased
such distinguished
visit our camp a
them.

Emerson Confess
Everything about a
is interesting, particu
writes about himself.
moment of his life,
brothered on the eve
riage. Ralph Waldo E
himself: "I am born
low class, without
poet... My singing
very husky, and is
part in prose. Still I
the sense of a perceiv
the harmonies that a
and in matter. A su
a snowstorm, a cert
are more to me than
and do ordinarily d
with my books."

Students Venerated
In the Twelfth cen
and study were so h
of in France that Phil
students' quarters in
their persons sacred,
so far as to make it
duty to arrest an en
raise his hand again
no matter what the p

Kills Black Bear With Bow and Arrow



When this man is loaded for bear it doesn't mean much—only a bow and arrow. But that was enough to kill a black bear recently near CCC camp F102 on Calispel creek where he is stationed. He is John H. Wilson. He has become an expert shot with the bow, for which he makes his own arrows.

PLANS FORMED FOR CCC CAMP

Seek Concerted County Move to Foster Placement of Youth Unit

County, city and civic club officials will be contacted to join in a move to establish a CCC camp, probably south of Anantone, by next spring to provide an adequate water supply for the Clarkston and Asotin valleys and to help rehabilitation of unemployed county youths, Mayor Frank P. Lint reported yesterday.

Mayor Lint reported he had contacted Rep. Knute Hill, Senators Lewis Schwellenbach and Homer T. Bone and CCC officials to interest them in the proposal for an Asotin county CCC unit. He pointed out that CCC camps have been established at Pomeroy and Dayton for the last two years in soil conservation and reforestation duties. Such activities here are needed, he said.

Meet Rebuff

Most of the replies on the proposal, Mayor Lint said, have not been encouraging, CCC officials pointing out the trend is toward curtailment of camps. Others state there are not 200 unemployed youths in the county to man such a camp, it being the opinion of Mayor Lint that such a unit should be composed of Asotin county youths.

"An individual seeking such a proposal," said Mayor Lint, "has small chance for success. City officials plan to enlist the help of county officials, Clarkston and Asotin County Young Democratic club and other organizations and individuals which will carry some influence with this state's congressional delegation and national CCC officials.

Unity Needed

"This proposal has been brewing more than two years. We have been met by discouraging replies. It's high time Asotin county united on this plan and made efforts to provide unemployed youths with such a project. Not only would these youths be given work, but progress would be made towards

improving forest and other public lands, preventing soil erosion and fostering the growth of vegetation on the Asotin creek watersheds, the source of the water supply for Asotin and Clarkston valleys."

Mayor Lint said Asotin county is nearly as large as Garfield and Columbus counties combined from a standpoint of population, yet each of these counties has CCC camps. It is estimated Asotin county has a population of about 10,000.

Greyhound Depends on Sight

The greyhound was originally bred to hunt and kill and unlike many sporting dogs he uses his sight rather than his nose. A proof of ancient origin, says a writer in the Los Angeles Times, may be seen in early carving found in old tombs in Persia and Egypt. Their clean outline would please any artist, either of the present or past periods. The straight front legs, arched back and narrow body is a streamlining model of canine beauty. And like the "man on the flying trapeze" his movements are graceful, for the gait of a greyhound is as even as that of the trotting horse.

600-Year-Old Quest Continues

Since 1328 Scotsmen have been seeking the return of historical Scottish records removed to London in 1290 when Edward I was conducting inquiries into the succession of the Scottish throne.

Jane—I want some insect powder.

Clerk—Do you want to take it with you?

Jane—Of course not. I'll send the bugs to you and you can give it to them.

Stamps Not Canceled Across Face
Of all the numerous issues of postage stamps that have carried the pictures of highly honored or sacred personages, including those depicting Christ, only two, says Collier's Weekly, were never canceled across the face of the stamp—a Queen Isabella II issue in Spain in 1850 and a King Ferdinand II issue in Sicily in 1859.

The Orgatron

An orgatron is an electronic instrument invented by the late Frederick Albert Hoshoke of South Haven, Mich. The orgatron looks, sounds and is played like an organ, but has no pipes. Its source of tone consists of free vibrating reeds of brass similar to those used in the old-fashioned harmoniums and melodions.

Great Dane Dogs Gentle

Great Danes are among the gentlest and most loyal breeds of dogs. They often weigh over 175 pounds. They did not originate in Denmark, as the name would indicate, though they attained great popularity there. They were first bred in Germany at least 500 years ago. They lack nothing in bravery. They were first used to hunt wild boar, and later, in America, to hunt mountain lions and wolves.

B. & H. JEWELRY CO.
DIAMONDS, WEDDING RINGS
and WATCHES
Corner Higgins and Main Sts.
Missoula, Mont.

JAKE'S PLACE
DRINKS OF ALL KINDS
Alley Way Between
W. Main & W. Front
125 1/2 W. Main Missoula

JACK ALSTEEN'S

Fender & Body Works

Office Phone 3527
Res. Phone 3280

P. O. Box 73

Missoula, Mont.

Eddy's Bakeries

"THE BETTER BAKERS"

Butte
Havre
Helena
Missoula
Lewistown
Great Falls
Yakima, Wash.

THE MONTANA POWER CO.

Missoula, Mont.

FORD

The Best Used Cars Obtainable



Can Be Found Here

SEE THEM

H. O. BELL CO.

MISSOULA, MONT.

GARDEN CITY DAIRIES

Wholesale and Retail
MILK and CREAM

MISSOULA, MONT.

PHONE 4108

Garden City Floral Co., Inc.

GROWERS OF PLANTS AND FLOWERS
HOME GROWN FLOWERS ARE FRESHER
1st Nat'l. Bank Building
MISSOULA, MONT.

EVERYBODY'S STORE
FOR EVERYTHING . . .

MISSOULA MERCANTILE CO.

MISSOULA'S OLDEST, LARGEST
AND BEST STORE . . .

C. C. C. BOYS GO FORMAL

Mr. and Mrs. Slim Moore, proprietors of the Black Bear Tavern of Thompson Falls, Mont., were completely bowled over Sunday afternoon, December 5.

A crowd of CCC men, all in proper CCC apparel, filed into the restaurant, pushed three tables together, sat down and in the best approved manner, ordered the special chicken dinner. The boys, eleven strong, had a happy, friendly hour, chatting, laughing, and in general creating a genial atmosphere. Some pictures were taken, and at the termination of their dinner, obligations were settled and the boys quietly filed out.

Everyone wondered as to the happy occasion. A basketball team—Football? Someone leaving? What could it be!

Well, the truth of the matter is—Barracks four, in Company 1998 CCC decided that such a beautiful day was just too good to spend in camp. The entire group present, hiked the distance of 7 miles into town, dined and topped a perfect afternoon by attending the the-

atre.
The success of the day, the complete cooperation of all, and the appreciation of the men for the idea has established for the barracks a 100 per cent vote for making this a monthly semi-formal occasion.

Rounded South America

Magellan went around South America through the Straits of Magellan in 1521, but Cape Horn was not rounded until 1616 by a navigator.

RIVERSIDE INN

CABINS, GAS, SOFT DRINKS

Eight miles east of Saltese
on Highway No. 10

St. Regis Hotel

Art Malone, Prop.

Meals, Beer,
Candies

St. Regis, Mont.

Cafe Montmartre

MISSOULA'S NEWEST AND
FINEST CAFE
Located in Missoula Hotel

The French Club

Cigars, Tobaccos & Soft Drinks
123 W Front St., Missoula, Mont.

TYPEWRITERS

Sold, Rented, Repaired
L I S T E R
Typewriter Service
Hammond Arcade
Missoula Montana

THE HAMBURGER SHOP

125 W. Front, Missoula, Mont.
Milk Shakes, Candy, Cigars

5c and 10c Hamburgers

KENNY & JIMMIE, Props.

STRAIT BAR

120 West Front, Missoula
A High Class Gentleman's
Resort

Wherever you can drive a car the Ford V-8 will take you comfortably. For the greatest return, invest in Ford V-8. Proved performance, reliability and economy.

HUBER AUTO CO.

Phone 148



WALLACE, IDAHO

NOTABLE GUESTS AT COMPANY 594

By George D. Perry

Company 594 has been honored many times by distinguished visitors, but it was especially honored October 29th, when Congressman White and party, Congressman Clark and party, of the state of Idaho, and the Regional Forester, Major Evan Kelly, visited camp, Mr. James J. Ryan, Forest Supervisor, who is a frequent visitor at the camp when in this vicinity, and several forest service employees, accompanied him, and remained for dinner. Captain Ford Trimble and Captain J. M. Gleeson, of District Headquarters, and Mr. Dow of Priest River, Idaho, also remained for dinner. The guests were conducted on a tour of the camp, upon which many complimentary remarks were passed, and dinner for the entire group was then served at 7:30 p. m. For this special occasion, the mess hall was decorated and banquet tables set for the party. The personnel of the camp was called into the hall, and Congressmen Clark and White were introduced. They spoke on the conditions of the State of Idaho, and the benefits which the state was deriving from having CCC camps within its boundaries. Major Kelly then spoke to the men and gave them a very fine heart to heart talk, explaining the value of the training they were receiving, and urged the men, no matter what the job was they were doing, to do it well, and a man's ability and ingenuity would show up, which would result in a promotion to a greater position in life. Capt. Gleeson, always a favorite with the boys, spoke on doing the things in life well, and quoted a speech by a well known financier, "Do the common things in life, uncommonly well," a phrase that seemed to convey a meaning to the boys, and give them an outlook which they may have missed in the past. This ability, Captain Gleeson stated, was the major factor of every successful man's life. The fact that the company had just received 120 replacements, who had not had an opportunity of becoming fully acquainted with life in camp here in Idaho, helped the morale considerably, as they were well pleased to think that such distinguished guests would visit our camp and talk to them.

Emerson Confessed Poetry

Everything about a famous person is interesting, particularly when he writes about himself. At a supreme moment of his life, writing to his betrothed on the eve of their marriage, Ralph Waldo Emerson says of himself: "I am born a poet—of a low class, without doubt, yet a poet. . . My singing, to be sure, is very husky, and is for the most part in prose. Still I am a poet in the sense of a perceiver and lover of the harmonies that are in the soul and in matter. A sunset, a forest, a snowstorm, a certain river view are more to me than many friends, and do ordinarily divide my day with my books."

Students Venerated in France

In the Twelfth century students and study were so highly thought of in France that Philip II made the students' quarters inviolable and their persons sacred. The law went so far as to make it the citizen's duty to arrest any one who dared raise his hand against a student, no matter what the provocation,

BUILDING NEW ROAD

DIXON, Mont., Dec. 3—Road construction on the Flathead reservation was started this week by a new CCC company on Valley creek. Thirty-one miles of road will be built in the area.

GULLY CONTROL IS PROFITABLE

Eighteen-foot Ravine Is Filled, Graded on Ed Lyons Farm

That filling and eventual sodding of gullies on farm land pays and is worth its cost is attested to by Edward Lyons, who farmers eight miles east of Walla Walla. At a moderate cost a large gully near his farm buildings was filled and graded last summer.

Before work was started by the Soil Conservation service and CCC the gully was 18 feet deep in places. During recent years it had cut into gravel and rock and was washing this material over fertile bottom-land. Lyons supplied the materials, CCC crews did the grading and constructed straw-wire checks to prevent washing during settling.

At present the drainage area of the gully is plowed pea land, purposely left rough to prevent run-off. The area will be planted to spring wheat in 1938.

After settling of the loose fill during the winter the area will be regraded and seeded to a mixture of alfalfa and grass. Being in a wheat field, this seeding will be completely protected from grazing and tramping during the summer months and the following winter the drainage area will be either left as standing stubble or will be disc tilled. Under these conditions there will be little run-off and the alfalfa and grasses will have further opportunity to become established and to form a protective sod cover before the following winter when more water may be expected.

DRINK and DANCE at

HOGUE'S BUFFET

Gardiner, Mont.

JARVEY'S BAR

BEER
WINES
LIQUORS

Gardiner, Mont.

Yellowstone Inn

Gardiner, Mont.
Refreshments of all
Kinds
TOBACCO
CANDY
ICE COLD
KESSLER BEER

It is realized that during heavy run-off periods water will always flow down these drainages. Lyons plans to keep this trip area always sodded in order to prevent erosion.

To have the gullying menace eliminated from his farm Lyons considers as worth many times what it cost in the way of materials, gasoline and the use of equipment.

Philadelphia Light Horse Flag

It is believed that the Philadelphia Light Horse flag was carried by the Troop that escorted Gen. Washington from Philadelphia to New York in June, 1775, when he was on his way to take command of the army at Cambridge. The banner, in possession of the Philadelphia city cavalry, derives special interest from the fact that its canton is formed of 13 stripes, alternating blue and silver, probably the earliest use of stripes on an American flag.

Claim Violin Bow Invention

The Hindus claim to have invented the violin bow. They maintain that Ravanaon, king of Ceylon, who lived about 5,300 years ago, invented the ravanastron, an instrument played with a bow. Sanskrit scholars say that names for the fiddle bow occur in works which are not less than 1,500 to 2,000 years old.

First to Build Schooners

Schooners were first built in Gloucester, Mass., in 1713, by Capt. Andrew Robinson. It is a fore-and-aft rigged sailing vessel, with from two to seven masts, used extensively for fishing off the Newfoundland coast.

THE CORNER

All leading brands of
Beer and Tobaccos
Cafe in Connection
McClellan & Morrison,
Proprietors

Philipsburg - - - Mont.

H. S. BROWN

MEN'S WEAR
"A QUALITY STORE
FOR MEN"
Philipsburg, Mont.

Granada Theatre

PHILIPSBURG, MONT.

Thursday-Friday, Dec. 16-17
"WEST OF SHANGHAI"
Boris Karloff

Saturday, Dec. 18
"BILLY THE KID"
Wallace Beery
"BAD GUY"
B. Cabot-V. Grey

Sunday-Monday, Dec. 19-20
"LIFE OF THE PARTY"
G. Raymond-H. Hillard

Tuesday-Wednesday, Dec. 21-22
"BLAZING SIXES"
Dick Foran
"ANGEL"
Marlene Dietrich

Thursday Only Dec. 23
"THIS WAY PLEASE"
R. Rodgers-B. Grable

Friday, Dec. 24
"FREE SHOW TO ALL"
Surprise Feature

Saturday, Dec. 25
"MAKE A WISH"
Bobby Breen

Sunday-Monday, Dec. 26-27
"BROADWAY MELODY '38"
E. Powell-R. Taylor

Tuesday-Wednesday, Dec. 28-29
"WOMEN MEN MARRY"
G. Hutchinson-G. Murnby
"SATURDAY'S HEROES"
V. Helim-M. Marsh

Thursday-Friday, Dec. 30-31
"THE BARRIER"
By R. Beach-L. Carrillo

His first day on the job, the colored hallboy dashed excitedly up to the register desk.

"De man in room seven has done hang himself!"

Clerk: "Hanged himself! Did you cut him down?"

Hall Boy: "No, sah! He ain't dead yet!"—Ohio Motorist.

"John Henry" Legendary Character

John Henry is a legendary character of a negro giant worker. Some years ago Roark Bradford wrote a book entitled "John Henry." This book was an account of the legends in connection with his life.

Season's greetings to
the new Flint Creek
C.C.C. Camp

GINGER'S PLACE

The home of good
Haircuts

Philipsburg - - - Mont.

Philipsburg Laundry and Dry Cleaners

Philipsburg, Mont.

Doe's Drug Store

We welcome the CCC camp to
Philipsburg
DRUGS, KODAKS, CANDIES &
DRUG SUNDRIES
PRESCRIPTIONS
PHILIPSBURG, MONTANA
Phone 41

Try our Sandwiches
and Pie
**The Pie Shop
Cafe**

Philipsburg, Mont.

Always a GOOD
GLASS of BEER at the
WHITE FRONT BAR

Schlitz and
Highlander Beer
5 East Broadway

Philipsburg - - - Mont.

BEFORE BUYING, TRY
THE GAMBLE STORE AGENCY
Radios — Chains — Auto Accessories
Philipsburg, Mont.

YOUR TROPHIES

will have that beauty and expression you admire if mounted by us.

Fur Rugs and Game Heads
for Sale

LENTFER BROTHERS TAXIDERMISTS

215 W Park St. Phone 337-W
Livingston, Mont.



CITY MARKET

Where Quality Sells and
Service Tells

Phone 44
PHILIPSBURG, MONTANA

Meet your friends at the

SILVER TAVERN

Friendliest Service in
Town

Booths for Ladies
HAINES & McKEE
Philipsburg, Mont.

Jenkins Garage

Chevrolet



Sales and Service
Philipsburg, Mont.

HUFFMAN GROCERY

A COMPLETE LINE OF
Groceries and Fresh
Vegetables
Philipsburg, Mont.

KELLY'S

Variety Store

Headquarters for
Gifts' Candies, Notions,
Drugs, Stationery, Etc.
PHILIPSBURG, MONTANA

Shop at

PENNEY'S

Sturdy Merchandise at
the price you want to
pay

Philipsburg, Mont.

Activities of Company 544, Yellowstone Park, Wyoming



The case when the CCC camp is occupying steam-heated apartments is comfortably located to meet all the extremities and whimsicalities of the Old Man Frost—such are the advantages of Co. 544, Yellowstone Park, Wyo. Below, the noon formation of the company with Senior Foreman, Fay Fogle officiating.

The Sunday afternoon at the Mammoth Springs was profitably spent by the wild game conservation conscious members feeding mule-deer the left overs of their meals.

Two pictures were taken on the spot where the future home, the modern barracks will be provided for this company. Lawrence Smith, hailing from Ken- nedy, is seen swinging masonry his pick. Mammoth terraces are the background.

ENTOMOLOGIST VISITS CO. F-52

On the evening of December 2, 1937, Mr. W. D. Bedard, entomologist from Coeur d'Alene, Idaho, gave an illustrated lecture to the members and visitors in the Recreation hall of Camp Thompson River. Colored slides, illustrating three types of destructive insects attacking local trees were described, and the latest methods of control were illustrated.

Visitors from Thompson Falls, Mont., included Mr. A. H. Abbott, Cabinet Forest supervisor and members of his personnel. Mr. Abbott added a small talk to the interest of the evening.

The entire evening was terminated by movies by the "Show Boat."

The Word Harem

The word harem is borrowed from the Arabic haram and means "that which is unlawful, forbidden, or sacred," as opposed to halal, which means "that which is lawful or free to all." The Turks softened the word haram into harem (pronounced harem), added the suffix lik, which means "place," and applied it to the part of a Mohammedan house occupied by the women, because it was their haram or sanctuary. Thus in Turkish the haremlik is the women's quarters and the harem is the women themselves.

TUM-A-LUM
LUMBER CO.
LUMBER - COAL
BUILDING MATERIAL
Pomeroy, Wash.

ARMY POSTS LOSE ALL CCC WORKERS

The Fort Lewis military reservation appears destined to lose the three CCC companies which have been working on projects connected with improvement of the military post, it was indicated in an Associated Press dispatch from Washington today.

The dispatch stated that Representative Johnson, reported he had been informed all CCC camps on army posts would be abandoned by April 1. There are 30 such camps throughout the country, of which three are located on the Fort Lewis reservation. Fort George Wright, district headquarters, will not be affected, as it operates with a detachment of workers from the Seven Mile state park camp.

CCC TO BE BUSY THROUGH WINTER

State SCS Coordinator
Completes Survey
of Camps

CCC camps, working with the soil conservation service, are well provided with work for this winter. J. H. Christ, Idaho state coordinator of the soil conservation service, said following a recent survey of Pocatello, Horseshoe Bend, Worley, Pullman, and Moscow camps with other officials.

"The principal objective of the survey was to find what work the men would be able to do this winter," Coordinator Christ pointed out. "We were concerned primarily with putting them on a sound working basis during the winter as well as the rest of the year. Because of good roads, the labor can be distributed usefully. There are times during any winter when it is impossible to get out because of road conditions."

Work during the winter will consist largely of masonry, rock work, putting in gully stabilizers, preparing timber materials for future use, construction of snow fences, and the type of work that weather conditions permit.

Wettest Spot in India
East Bengal, India, is the wettest spot; the record annual precipitation there is 429 inches.

SEASON'S GREETINGS
TUM-A-LUM
LUMBER CO.
Lumber, Coal
Building
Material
Pomeroy . . . Wash.

Christmas
Greetings
From
Sanitary
Barber Shop
Pomeroy . . . Wash.

Cost of Washington Statue
The net expenditures for the statue of George Washington by Horatio Greenough (1805-1852), according to the "Appropriations and Expenditures for the District of Columbia," amounted to \$42,170.74. Actual payments to the sculptor, \$21,990.74. Additional expenses for shipping from Italy; cartage from Navy yard to the Capitol; after installation, the cost of removal to the grounds directly in front of the entrance, and the erection of an iron fence around statue, etc., \$20,180. A later appropriation of \$5,000 was made for the removal of the statue to the Smithsonian Institution. The installation was completed November 21, 1908.

Life of Flies
Most flies die in winter. Experiments conducted by the United States Department of Agriculture showed that flies kept in unheated buildings died during the first really cold nights of the winter. Those kept in one of the greenhouses behaved just as they would during the summer at similar temperatures. At temperatures of 65 degrees to 75 degrees Fahrenheit very few lived longer than 35 to 40 days. In one of the large stables with a temperature ranging from 32 degrees to 50 degrees Fahrenheit some flies were kept alive for a period of 70 days, a long period, but not sufficient to carry them through winter.

The Purple of Cassius
The purple of Cassius was a fine purple pigment first prepared by Andreas Cassius about 1685 and called also gold purple. It is obtained by treating a solution of gold chloride with a mixture of tin chlorides. The resulting product is believed to consist of tin oxides mixed with finely divided metallic gold. It is used to impart a pink, rose or ruby red color in staining glass, in painting pottery and enamel, and in coloring artificial gems.

Sanitary Barber
Shop
BATHS
Pomeroy Wash.

MERRY XMAS
Seeley Theatre
It's the Best Show in Town
Pomeroy, Wash.

MERRY XMAS
AND HAPPY NEW YEAR
D. C. McFALL
HARDWARE
MERRY XMAS &
HAPPY NEW YEAR

MERRY XMAS
AND HAPPY NEW YEAR
From
McKeirnan's, Inc.
Pomeroy, Wash.

Pacers and Trotter
To help them maintain the rolling motion sometimes described as "wiggling" or "side-wheeling," most pacers race in hobbles, leather straps which direct the gait. Following time-honored custom, trotters and pacers invariably are identified by the best time they have made for the mile, standard distance for a heat. Currently, however, says a writer in Literary Digest, public estimation rates the horses by the amount of money they have earned.

The Mulberry
The red mulberry is a round topped tree, usually around 15 to 30 feet in height, although they may grow to be 60 feet tall. The trunk of the tree usually is quite short. The leaves of a medium size tree are around 3 or 5 inches long, but they may attain a length of 7 inches, are rough edged, and yellow green and rough in texture above when the tree is young. On the underside the leaves are much paler. As the tree grows older the leaves become a darker green and smooth. Some of them develop with unequal lobes. The bark of the mulberry is quite distinctive in that it is grayish brown and seems to separate into plates.

Lambs Only One Year
Lambs never live longer than a year—then they become sheep! One reason why lambs sell for good prices is that there is little waste meat on them. "Hothouse lamb" is lamb born late in the fall and marketed in the winter. All lambs marketed between spring and fall are called "spring lambs."

Merry Christmas
From
O. K. Barber
Shop
To
CAMP GARFIELD
Pomeroy, Wash.

The
SEASON'S GREETINGS
From
Mabel at The
VILLA CAFE
Pomeroy . . . Wash.

MERRY XMAS
AND HAPPY NEW YEAR
Crystal Fountain
and Cafe
TED WEBB, Mgr.
Pomeroy, Wash.

Merry Xmas
From
Ed and Elmer
Pomeroy Hotel Basement

Presidents' Previous Occupations
Washington was a farmer and surveyor. William Henry Harrison studied medicine, but turned to the army and later to politics. Taylor was a soldier and a Louisiana colonel. Grant a tanner, farmer, real estate agent, hardware clerk and soldier. Theodore Roosevelt's profession was politics from his twenty-second year on. Harding was a newspaper man. Hoover was an engineer. All the others, after various beginnings, were lawyers.

The Shrine of Mexico
Guadalupe, termed the shrine of Mexico, is the scene of "Chapel of the Well" and the celebrated basilica built in 1709. At San Juan Teotihuacan may be seen the once-buried pyramid city, which exhibits the largest artificial mounds of ancient habitation seen in North America. The walls, staircases and rooms reveal the splendor of a once opulent civilization. Its origin placed at over 3,000 years ago.

Merry Xmas
POMEROY HOTEL
WESTERN UNION
TELEGRAPH
Send folks a telegraph
GREETING
Christmas for 25c

Merry Christmas
From
Tammany Hall
WELCOME
NEW CCC ENROLLEES
CANDY, TOBACCO AND
LUNCHES
Pomeroy . . . Wash.

Merry Xmas
From
Emerson Hull Co.
Pomeroy, Wash.

Merry Christmas
From
Geo. Simenstad
Jeweler
Pomeroy . . . Wash.

People's Market
Wishes you many Merry
Christmases and Happy
New Years
Pomeroy . . . Wash.

CONSERVATION CHIEFS GATHER

Soil conservation leaders from throughout the Inland Empire met in Spokane in a regional conference for the study of personnel and administration.

Charles P. Emery, assistant chief of the personnel and training division of the soil conservation service from Washington, D.C., was the featured speaker at the closing session Saturday.

Dr. Mark Hillary, personnel psychologist and author of international prominence, addressed the group at a banquet held Friday evening.

W. A. Rockie, in charge of conservation activities in the region, addressed the group on "Managerial Leadership."

"In a comparatively brief space of time a force averaging 600 personnel, organized and assigned to duties at selected points in Washington, Oregon and Idaho and aided by from 2000 to 2500 CCC enrollees, has demonstrated beyond question that soil wastage and depletion

in the northwest need not continue," Mr. Rockie told the group in a statement outlining the purpose of the conference.

Personnel Is Key

"The measure of success we shall experience will be in direct ratio to the proficiency of our personnel and this in turn will be reflected by the spirit as well as by the competency of the individual employee.

"To each of us with managerial responsibilities there comes a challenge: 'Am I wise enough to discover, bring out, and put to most effective use the best in each one who looks to me for leadership?' The purpose of this conference is to meet this challenge."

Managers of the seven conservation projects in the region are in attendance with members of their staffs. The managers are: G. B. Swier, Dayton; Ivan C. DeArmond, Newberg, Ore.; F. A. Mark, Moscow; H. J. Clemmer, Emmett, Ida.; William W. Hill, Condon, Ore.; Jack W. Rodner, Ellensburg, and Harlow Parkins, Athena, Ore.

NEW POND

"Any luck?" asked the farmer as he came upon a man fishing in a pond.

The angler shook his head. Later that day the farmer appeared again.

"Any luck?" he asked once more.

"No," muttered the fisherman. "Are there any fish in this pond?"

"Don't rightly know," mused the farmer. "The pond wasn't here yesterday."—Grit.

Japan Borrows Words

The Japanese have borrowed several words from the French; they call the hat a "chappo," a button "botan" and saber "saberou."

NEWS FROM CO. 2495, LOLO, MONT.

Sports

Basketball is the main sport in Company 2495. Since the camps has obtained permission to practice with the Florence high school they have organized a very promising team. Since most of the men playing have played in high school they work very well together. The first game they played with the Florence regulars was quite close, the boys winning 12-13. It is the boys wish to schedule games with other camps.

The men that played in the game were: Terrence Duffy, as Captain, Clifford Hansen, Phillip Hexon, William Abcan, John Harrington, Leslie Jones, Donald Lang, David Butler, Harry Olson, Lester Pattee, Christ Wirtz, and Eric Dunvan.

The Basketball team of company 2495 has been given an invitation to play basketball with the Florence high school Friday the 10th. A dance will follow the basketball game.

Since the cold weather has taken possession of all summer recreation the boys have started to work on a skating rink. They plan to dam the creek below camp to flood an area large enough to accommodate everyone who wishes to participate in the sport. They are now cleaning away the brush and stumps and constructing a dam. If the boys are interested very much a hickey team will be proposed.

Project News

The boys on the Wagon Mountain project are really going to town. Six weeks ago the project was started and to date they have completed 8 1/2 miles of road. Though the boys are working in snow and zero weather they still accomplish as much as ever. I guess its the "Wake up and live" spirit the boys have.

There are four projects under way at the present time. The Wagon Mountain road, supervised by foremen Ed Curtiss and Rodger Carson. The Creosoting plant is supervised by George Gallager. Telephone

line construction is supervised by Roy Daniels, and the wood project by Jake Tevis. All the foremen report excellent cooperation from the men.

Educational Department

Four additional classes have been in session for three meetings. Handling of tools, truck trail construction, and machine operation and first aid. Each of the classes have a large attendance and every week some additions are made. Carpentry will be offered next week as Mr. Williams, the instructor, has just returned. The shop has a lot of new power tools so it is expected that some very good work will result.

Radio

Company 2495 communicates twice daily with the Seeley Lake Spike Camp by Radio. The spike camp is expected to be through with their project within two weeks.

Lyle F. Green, Reporter.

A Scotsman on a visit to a friend outstayed his welcome. His host thought a hint might have the desired result.

"Don't you think," he said, "that your wife and family will want you to be with them?"

"Mon," replied the Scot, "I believe you're richt. It's rale thochtfu' o' you. I'll just send for them."

Horse on Schooling List

The saying that a race horse is on the schooling list means that because the horse is fractious and nervous at the post, it must attend daily practice at the starting gate until the horse has convinced the assistant starters that it is not dangerous and will stand in the stalls. A horse placed on the schooling list may not race again until an improvement in starting etiquette has been shown.

SNOW HAMPERS TREE'S DELIVERY

Snow on Mount Spokane has delayed delivery of the 45-foot Christmas tree which the Junior Chamber of Commerce will set upon the Lincoln monument plot at Main and Monroe, and the tree will not be in place until Wednesday, it is reported by the Junior chamber's Christmas home decorating contest committee.

"The snow was so deep CCC boys who are bringing in the tree couldn't get to it without some shoveling," Art Hyppa, member of the committee, reported. "The tree will be set up and trimmed, to add another cheerful note to Spokane's downtown decorative scheme."

Eton College in England

Eton college in Buckinghamshire, England, was founded in 1440 by King Henry VI, and was intended as a preparatory school for King's college at Cambridge. Henry took many ideas for Eton from the Casa Giacosa, the great school near Mantua, Italy, founded by its marquis about 1429.

Merry Christmas Men!

We appreciate your patronage and hope you will let us have the opportunity of serving you

J. C. Penney Company
Dayton, Wash.

Meet and Eat at **DAYTON HOTEL**
Rooms with or without bath.
V. A. THOMAS, Prop.
Dayton, Wash.

Merry Xmas to **C.C.C. Boys**
DAYTON PRESSERY
Cleaning and Pressing
Mr. & Mrs. J. L. Thomas
Dayton, Wash.

Merry Christmas to **CAMP DAYTON** from **Dayton Creamery & Ice Works**

Merry Christmas from your local **SAFEWAY STORE**
Dayton, Wash.

Greeting for the Holidays
BAKERITE BAKERY
Products are Better
Dayton, Wash.

Merry Xmas to Camp Dayton from **MANHATTAN CLUB**
Beer, Tobacco, Pool
Dayton, Wash.

Greetings from **DAYTON SHOE SHOP**
Shoe Repairing a Specialty
AMEL SMITH, Prop.
Dayton, Wash.

BABE'S PLACE
Merry Christmas to Dayton C.C.C. Boys.
Dayton, Wash.

Dayton Creamery and Ice Works
Blue Ribbon Butter
Blue Ribbon Ice Creams,
Sherbets, Ices, Crystal
Ice, Sweet Cream, Sweet
Milk and Buttermilk,
Dayton, Washington
Phone 118

Greetings for the year
HAMILTON HARDWARE
Dayton, Wash.

Season's Greetings
HECHTNER'S
5c and 10c Store
Dayton, Wash.

Season's Greetings from
LIBERTY THEATRE
Dayton, Wash.

Season's Greetings from the
ELK DRUG CO.
THE GIFT STORE
Dayton, Wash.

Our sincere thanks for your past patronage
Merry Christmas
Happy New Year
Maughan Motor Co.
Your Dodge and Plymouth Dealer
Dayton Wash.

Officers and Boys of Camp Dayton
C.C.C. Co. 545
May your Christmas be a Happy one and the New Year a prosperous one.
DAYTON DRUG
Dayton, Wash.



A weekly publication devoted to the interests of the U. S. Forest Service, U. S. National Park Service, State Park Service, Soil Conservation Service, U. S. Bureau of Reclamation, and State Forest Services within Montana, Northern Idaho, and Eastern Washington, and the CCC camps in the Fort George Wright District of Washington, The Missoula, Montana, CCC District, and The Lewiston, Idaho, CCC District. Published each week by the CCC Review Publishing Co., Box 413, Spokane, Wash.

Subscription rates are 25 cents per month or \$1.00 per six months mailed any place in the United States. Advertising rates on request.

The yearly average paid circulation per week of the CCC Review is 3500 copies.

News or communications intended for publication in the CCC Review should be addressed, Editor CCC Review, Box 413, Spokane, Wash. The paper goes to press Wednesday of each week. All camp reporters please mail your news articles by Saturday of each week.

Official CCC Winter Camps in Fort George Wright, Wash., District

Co No	Cp No	Camp Name	Post Office	Com. Officer
208	BR-48	Columbia	Coulee City, Wash.	Capt. Seitz
229	F-188	Willow Creek	Emida, Ida.	Lt. Miller
257	F-117	Marble Creek	Marble Creek, Ida.	Lt. Frambach
281	F-102	Kalispell Creek	Priest River, Ida.	Lt. Delaney
530	F-76	Libby	Libby, Mont.	Capt. Slekerman
531	F-132	Big Creek No. 2	Prichard, Ida.	Capt. Moore
562	F-154	Devils Elbow	Prichard, Ida.	Capt. Hufford
584	F-164	Four Corners	Priest River, Ida.	Capt. Samuels
949	SP-7	Seven Mile	Ft Geo Wright, Wash	Capt Lauri
1204	F-120	Avery	Avery, Ida.	Lt. Gies
1205	F-159	Blow Down No. 2	Priest River, Ida.	Lt. Jones
1235	F-127	Experimental Sta.	Priest River, Ida.	Lt. Toney
1239	F-187	St. Joe River	Avery, Ida.	Capt. Chabert
1249	F-182	Wolf Lodge	Coeur d'Alene,	Capt Twombly
1985	SP-1	Heyburn Park	Chatcolet, Ida.	Lt. Merkle
2920	F-1	Sullivan Lake	Metaline Falls,	Capt Coverdale
2936	P-215	Usk	Usk, Wash.	Capt Smith
3266	F-180	Hayden Creek	Coeur d'Alene, Ida	Capt Balliet
4762	F-203	Drysdale	St. Maries, Ida	Lt. Anderson
4795	SCS-2	Peone	Worley, Ida.	Capt. Harper
7930	F-142	Kalispell Bay	Priest River, Ida.	Capt Stevens
8150	F-62	Growden	Meyers Falls, Wn.	Capt Davis

Official CCC Winter Camps in Fort Missoula, Montana, District

Co. No.	Camp Name	Post Office	Camp Com.
535	YNP-1	Mammoth	Yellowstone Park, W.
544	YNP-7	Glen creek	Yellowstone P. W
574	SP-3	Cavern	Whitehall, Mont.
575	SCS-1	Winnett	Winnett, Mont.
591	F-42	Oregon Butte	Superior, Mont.
939	F-38	Nine Mile No. 3	Alberton, Mont.
932	F-37	Nine Mile No. 2	Alberton, Mont.
956	F-9	Taft	Haugan, Mont.
967	GNP-15	Apgar Flats	Belton, Mont.
1501	F-60	Birch Creek	Dillon, Mont.
1941	F-40	St. Regis	St. Regis, M., E.
1962	F-36	Nine Mile No. 1	Alberton, Mont.
1963	F-57	Squaw Creek	Bozeman, Mont.
1998	F-52	Thompson River	Thompson Falls,
1999	F-61	Belt Creek	Nelhart, Mont.
2503	BR-57	Ballantine	Ballantine, Mont.
2901	GNP-1	McDonald Creek	Belton, Mont.
2945	F-55	Lolo Creek	Lolo, Mont.
4729	GNP-9	Belton	Belton, Mont.
4782	F-75	Flint Creek	Phillipsburg, Mont.

Official CCC Winter Camps in Lewiston Idaho, District

Co. No	Camp Name	Post Office	Com. Officer
287	SCS-2	Heppner,	Heppner, Ore.
545	SCS-3	Dayton	Dayton, Wash.
546	SCS-5	Garfield	Pomeroy, Wash.
554	SCS-W2	Pullman	Pullman, Wash.
559	BR-44	Stanfield	Stanfield, Oreg.
680	F-113	Baker	Baker, Oreg.
1224	F-115	Slate Creek	Whitebird, Ida.
1231	F-115	Canyon Creek	Canyon City, O.
1293	F-107	Pollock	Riggins, Ida.
1503	SCS-1	Moscow	Moscow, Ida.
1701	SCS-W4	Walla Walla	Walla Walla, Wn.
3201	F-136	Squaw Creek	Gibbon, Oreg.
3217	P-215	Hilgard	LaGrande, Oreg.
5702	F-123	Northfork	Pierce, Ida.
5703	P-276	Browns Creek	Pierce, Ida.
5704	F-190	O'Hara	Lowell, Ida.
5705	F-193	Bungalow	Pierce, Ida.
5708	S-279	Dent	Ahsahka, Ida.

VALUE OF LEARNING

There are many who do not understand the true value of learning. To have schooling is the paramount thing that employers ask of people today whom are in the market to secure employment.

It is realized that many of the members of the Civilian Conservation Corps, are not beyond the eighth grade in school, and in order to combat illiteracy in this organization, the war department has put into effect a gigantic educational program, whereby any member, whether he has been beyond the third or fourth grade, or any grade in school, he may go ahead and further his education.

In camps there are many courses offered to the boys.

So Fellows, take advantage of what the United States is offering you and learn what you can for later in life you may not have so good an opportunity as you now have.

TRUE SOIL CONSERVATION

When The Spokesman-Review said that there was "a lot of sham about soil conservation," it meant the costly practice of issuing government checks to farmers to cut down their crops. That subterfuge was adopted after the supreme court decided the original AAA was unconstitutional. It is unjust to the dairy industry, the greatest conservator of soil fertility in this country. The only checks that the dairy producers get are cream checks from their cooperatives and private creameries.

That is a different set-up from the constructive soil erosion work which the government carries on in the Inland Empire and throughout the United States. The soil erosion service, since changed to the soil conservation service, was set up to demonstrate the practical possibilities of curbing erosion and its allied evils. The procedure, as suggested by President Roosevelt, was to treat complete watersheds within the principal regional types of soils and average topographic conditions, where representative systems of agriculture were found. Thirty major demonstration projects were initially established in the United States, including one in the Pacific Northwest, and the number has since been increased, including six additional in the Pacific Northwest.

In this constructive work a fine cooperative spirit has been shown by the effective agency set up by the government, the farmers in endangered areas, and CCC boys. This is true soil conservation, as distinguished from the sham variety.—Spokesman-Review.

THESE MEN ARE GUARDING TREASURE

Soil conservation men might adopt the slogan of the paint industry: "Save the Surface and You Save All."

The three-day meeting of conservationists in Spokane this week is dedicated to business far more serious than coining or borrowing slogans, however. It is being devoted to improving organization among the men who have been assigned the vital task of preventing precious soil from being blown or washed away by the elements.

One need not be a land owner to take notice of the threat of erosion. The fading colors of the once rich, black hilltops in grain-growing areas near Spokane give warning to an observing person that treasure is being lost. It is generally recognized that the problems being attacked by the men in Spokane this week are the problems of a nation. If these men should fail in their task it would be a matter for national concern.—Spokane Chronicle.

Iceland's Temperatures

Iceland, warmed to some extent by the Gulf stream, has a winter temperature averaging 30 degrees, and a summer temperature rising to 51 degrees. Vegetation is sparse, although flowers bloom in the short summer. All the trees are stunted, the birches reaching a height of only six feet. Even the sheep are diminutive in size.

Glaciers of Antarctic Region

The Antarctic region is almost covered by glaciers. Greenland is about three fourths covered, and Alaska, which ranks third in glaciers, is only about three per cent overspread by glacial ice.

Historical Events in January.

1. New Years.
2. U. S. Flag first raised in 1776.
3. Battle of Princeton 1777.
4. Utah becomes state 1896.
5. Capt. John Smith captured 1608.
6. Epiphany.
7. 1st telephone across Atlantic 1927.
8. Battle of New Orleans 1815.
9. First shot in Civil war 1861.
10. Standard Oil Co., Inc. 1870.
14. Peace treaty England and U. S. 1784.
15. First practical locomotive 1831.
16. Fuelness Mondays began in 1918.
17. Prohibition went into effect 1920.
18. Electric trolley patented in 1892.
20. American Revolution ended 1783.
22. Panama Canal treaty signed 1903.
23. National election day fixed 1845.
24. Gold discovered in California 1848.
25. 1st Colored regiment formed 1863.
26. Bessemer Steel Converter pat. 1869.
27. Incandescent light patented 1880.
28. Panama Railroad completed 1855.
29. Kansas admitted to the Union 1861.
31. Gov. Goebel assassinated in 1900.

The Rat Family

While many persons believe there are a number of different kinds of rats, the authorities say there are only two that come under the house rat classification. These are the common brown rat and the black, or ship rat. The latter is restricted in its range and is found principally along seaports and the Gulf states. The brown rat is found in every state and is the species that constantly annoys mankind. No other animal can rank with it as a disease germ carrier, and in India alone over a 25-year period 10,822-331 deaths occurred from bubonic plague transmitted to humans by rats.

Bats Pollinate Bananas

Bats play the role of bees in pollinating certain kinds of bananas states Dr. L. van der Pijl, biologist of the Netherlands East Indies. Certain species of these flying mammals have very long tongues, equipped to collect pollen for food. They move from flower to flower, and in so doing transfer enough of the pollen surplus to effect fertilization. The banana flowers visited by the bats have an odor quite disagreeable to human nostrils, which is said to be quite like that of the bats themselves, and hence presumably attractive to them.

Sponge and Pearl Divers

Sponge divers of the Mediterranean sea are able to work at a maximum of 150 feet without diving suits. They only make short stays. The pearl divers of Australia descend to a depth of about 120 feet. The best divers remain below surface about 1 1/2 minutes. Only in exceptional cases can they stay two minutes.

Petersen Hotel

Priest River, Idaho
HOME OF GOOD EATS
Beer, Confectionery, Tobacco
MARGARET OLSON, Prop.

BEER PHONE 138

Ernie and Gladys
E & G CLUB
COURTEOUS SERVICE ALWAYS
NEWPORT IDAHO

BILL AND VERA'S BUNGALOW INN

"OUR CHICKEN DINNERS ARE SOMETHING TO CROW ABOUT"
One Mile West of Priest River, Idaho
Phone 6-F-12

Forest Sup

Major Evan V

Name of Sup.	LI
G. E. Martin	LI
W. B. Willey	DI
G. M. Brandborg	HA
A. H. Abbott	TH
W. J. Derrick	BI
C. A. Joy	BU
J. C. Urquhart	LI
J. C. Whitham	LI
J. N. Templer	HA
K. A. Klehm	LI
R. T. Ferguson	LI
E. H. Myrick	MI
R. A. Coster	CO
C. D. Simpson	CO
R. A. Phillips	GA
J. E. Ryan	SA
R. R. Fitting	SA

Soil Conserva Wins on 100 Acre

Soil conservation on a 100,000-acre demonstration project in the vicinity of Coeur d'Alene, Idaho, is resulting in an increase in the production of cattle and hogs, according to a statement issued from the Spokane office of the soil conservation service.

The number of cattle on the project area has increased 100 per cent since 1933 and the hog population has increased 48 per cent, the statement said.

The statement said that livestock increases as a result of the large acreages of sweet clover and alfalfa crops to be planted and replenish soil.

Since the erosion project was established approximately 10,000 acres of eroded land has been restored to permanent crop alfalfa and grass, and 10,000 acres of culture to sweet clover, both of which are green manure crops. Three years ago the project area had no sweet clover or alfalfa. Today, sweet clover is common.

"XYZ" Correspondent

"XYZ" correspondent name given to the 1797-98 of three American commissioners to France came from the names of Talleyrand, members of the French government as the price of respect for the French government.

Old Fort L...

Old Point Comfort called Cape Comfort by settlers who established permanent colony and has been continuously occupied longer period than any other in the United States.

Gives In to M...

A wise man is best when he finds that the situation which weighs with him with thousands before him such as has borne the position.

SH
C
DR
CIGAR
Plumm