

3rd session w Kelly Murphy on Ce
12 July 85

From what did Evelyn die?

When?

How was Ce affected?

Detail 1 first time he met Ce.

" " last " " " "

Was y referred by Ce to predecessors?

Ce's opinion of Swanson

What was Ce's real-estate holdings?

Did Ce know by an equal extent
year-round?

What did he say re Bordes, re Tipier?

Doesn't know what Evelyn die of
~ a long affair - Roy
was in Boston at 1 time.

Ce's physician told Roy by Ce
asked to physician Thomas or Thomas'
wife to get a word o a unknown
pot-hunter, Jerry Young, cuz he, Ce,
wanted to give him his
artifacts. B/c guy - young - never showed up.
Physician was Wayne Wright, a
heart surgeon.
Young was at Ce's house a lot
Impression was that it was a fancy
stuff & Ce intended to give
Young.

Young has a 'muse' & a
gd-looking wife of whom Ce
was v fond.

Ce took his wife's death v hard -
→ phenomenally homesome. Prays
then on medication. Drove terribly.
Always delighted when peop wd
drop by. Thomas' wife wd
call in a day or two a week
to do his corresp.

Roy M saw Ce in late 1930s.
Ce was sitting on Wilson Ct on
Brown's Bend. Roy was herding
sheep - saw Ce & v nice veda
Ce was knocking. Later Roy went

Ce. 24.9.1.2

2 saw 1 debris. knew what it
was car 1 Murphy's but a
Bosque border who recognized.

↳ 'Pete' Pete had worked on
an excavation in Spain. Ce
prob did not know him then.
B later, probably car Pete
lived a couple miles away.

Ce's use ca 5 miles out of
Town Falls. Several hundred
miles away were other houses.
KM did not know any of them.

A man at H¹ 5/4¹ ^{now} grew up w Ce.
He is well versed in gems.
Was w Ce when I bought w
Fred. [I bought 4, missing]

Rate of Ce's knapping probably
increased & → peaked in 1960s &
1970s. Ce → less impressed
to validity of styles & neck widths &
how much cd be determined ex
t uses to wh a tool had been put.
Use - was indicates last use.
Stylistic variability w/in types.

No real interest in typology or C
forms associated.

Ce fascinated w all kinds of material car

Ca. 21.9.13

6.24.9.14
L parallel deposit ribbon flaking
of the period. No hypothesis
on why.

Ce commented on heavy deposits
of ces around Spgs.

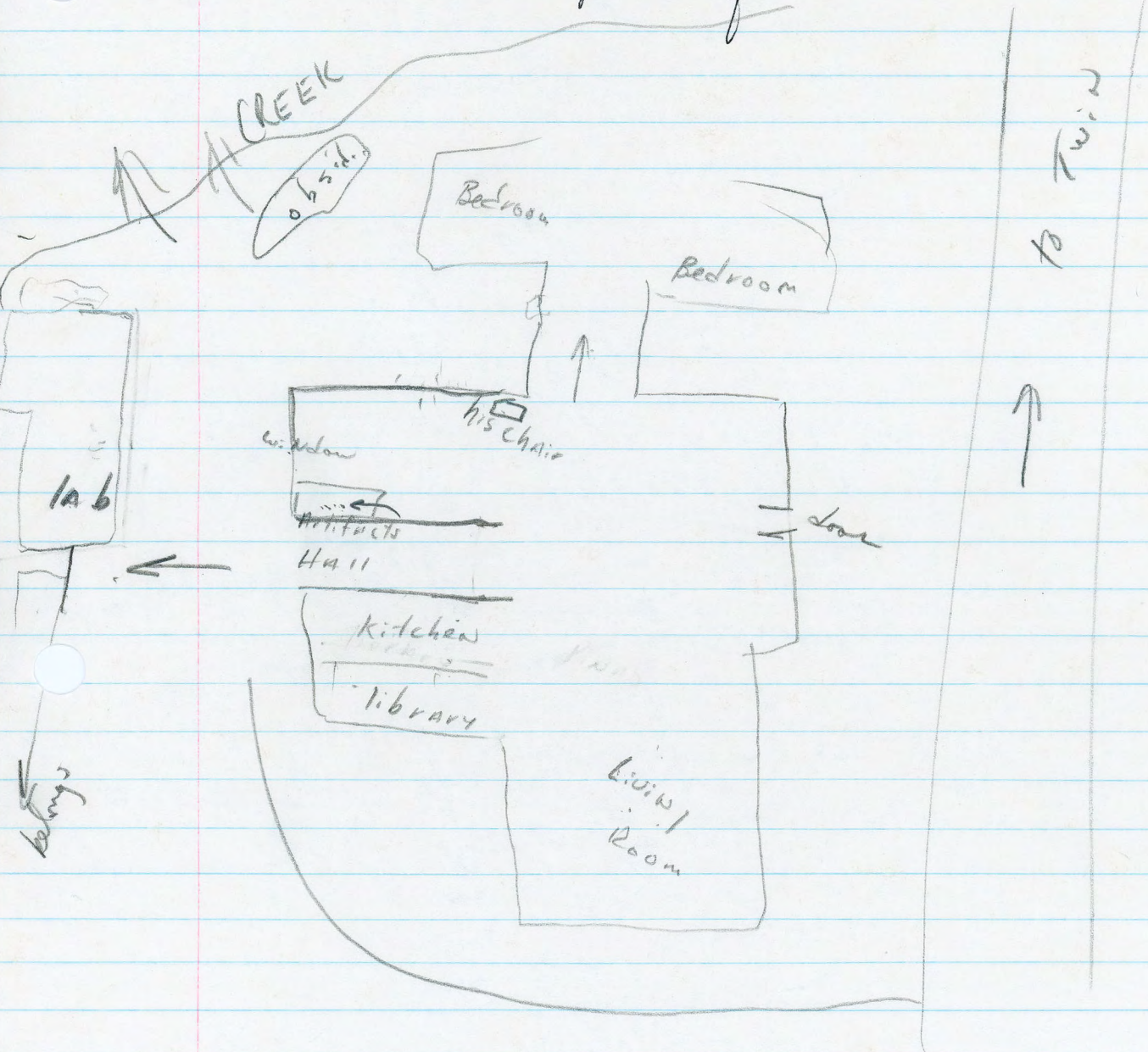
Wells interest in chronology. (man tag used as Altitheval)

Familiar w Fagan's altitheval
project.

6.24.9.14

S
↑

Floor plan of Ce's house



3-5 acres

Ca. 24.9.15

In found living room w/ many
persons' shoes & lots of objects wrapped
in velvet, peculiar packets w/ little
pockets

Had emeralds, diamonds, rubies.

KM last saw these rocks
in just after his ~~was~~ article
on Calcanem hammer was
published in Flintknappers Exch.
KM & his wife
stopped to see Ce.

Now a light brown in house.

Ce that night of Bordes

recalls that Francis Bordes was a
real gentleman.

Julius Domowitz, principal at
Castle Ford (30 miles W of Twin
Falls, on Salmon Falls Cr) translated
Bordes corresp of Ce.

Thomas had Pleist bones near Twin
Falls power plant. Ce was
fascinated whether any ~~w/~~
altered by man. ~ a well-
known paleo-anthropological deposit. That
4 mandible skulls found by
Swanson & Butler w/ Twin Falls

Ca. 2019.1.16

late 1950s had flake associated with them.
2 miles on Kelly's Fish Farm
(Crystal Springs) paleo deposit
of Clovis points. long points.

He sd w/ "micro flakes" next to
skulls & were associated. He had (six)
elephant skulls w/ out assoc

He called them micro-flakes &
implied they w/ or a micro
technology

He knew of the rock shelter near
Nat Soo Park Hot Springs where
had paleo material & bones.
Evelyn sd if Don wanted to
be a famous archaeologist he
had to sell & if not do it
him. B. He was interested
in it sort of thing, she sd.

Visiting
Twin
Falls,
and New.

The lake Warrington & Ruth Ann
& a few of the "higher crust
types"

His opinion of Tipier. That highly of him
Evelyn that he was a "great gentleman"
Kor doesn't know of Tipier visited
Twin Falls.

He didn't like Butler much &
sd v little of Swanson!

10.24.9.17

Butler re-worked Ce's stuff @ al
latter ~ a gd work then ~
Ce's stuff

Ce took lots of notes when reading.
8 1/2 x 11 (tablets like this), KM saw it

[No notes in collection]

KOC thinks ~~to~~ Ce spent 1 to 2 hours
a day, top, at knapping.
Doesn't know re earlier years.

KOC doesn't know if sure re security
of 1 genus 4 Kelly had.
Spals in greatest frequency.

end of interview w/ KM.

Ce. 24.9.1.8