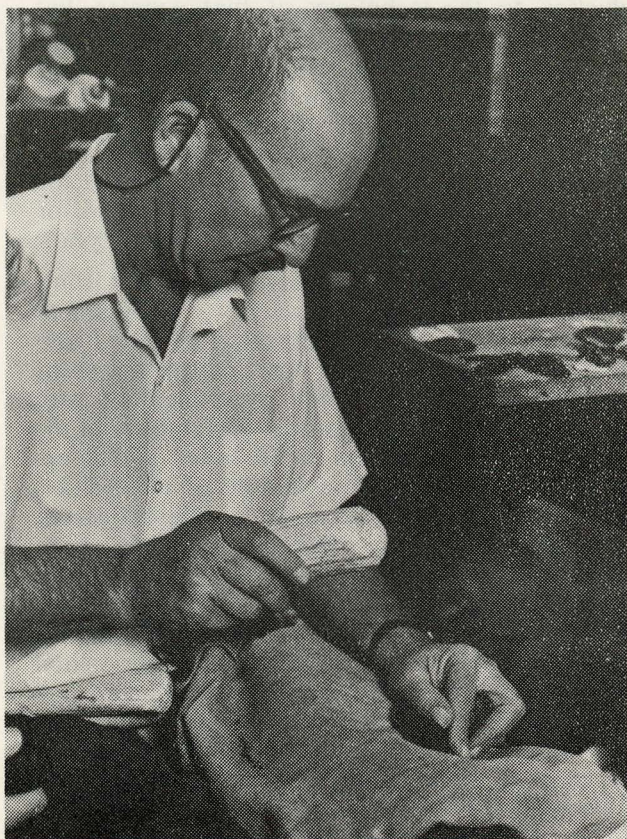


Idaho State University

announces

a new educational film

“The Shadow of Man”



Ce. 30.1.1



Idaho State University
POCATELLO, IDAHO
83201

Faint, illegible text and markings on the right side of the page, possibly bleed-through from the reverse side. Includes a dashed horizontal line near the top and several vertical lines below it.

A new educational film of anthropological significance

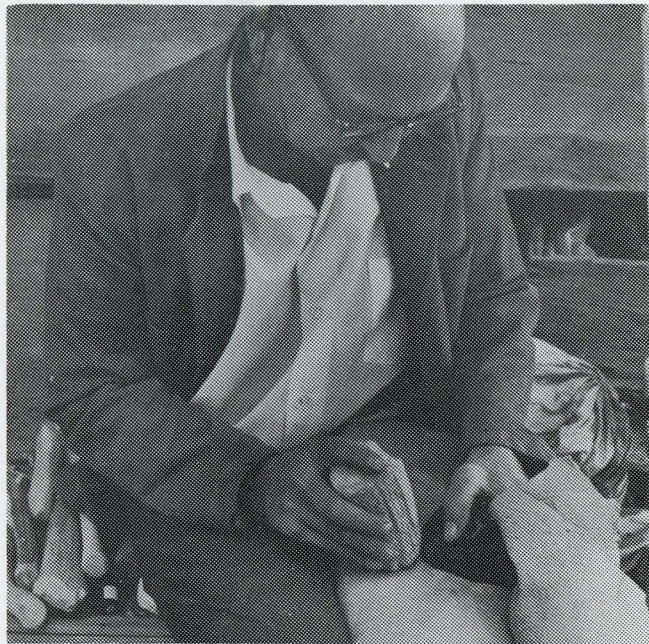
The Shadow of Man

The Shadow of Man is a 16 mm. color and sound film 28-½ minutes long which records quarrying activities at prehistoric obsidian quarries on the high lava desert of eastern Oregon. The film was taken on location while Don Crabtree of the Idaho State University Museum quarried obsidian for his experiments in flintknapping. This film records the activities of prehistoric man. Included in the film are scenes showing the natural setting, the preparation of replicas of digging tools, and the actual excavation of obsidian. The kinds of prehistoric stone tools found at the quarries are replicated in flintknapping done at the scene by Don Crabtree.

The Shadow of Man is the first in a projected series of color and sound films on experiments in flintknapping by Mr. Crabtree. It is not an introduction to the techniques of flintknapping, but rather illustrates the steps involved in quarrying and the associated flintknapping activities of prehistoric man. Other films in the series will treat the principles of flaking, the production of polyhedral cores and blades by several techniques, pressure flaking, and the replication of specific prehistoric tool types. This series is planned for completion during the next two to three years.

Don Crabtree of Kimberly, Idaho, is a flintknapping expert extraordinary. A Research Associate in Primitive Technology of the Idaho State University Museum, Mr. Crabtree has spent the better part of his life experimenting with the techniques of flaking stone. His mastery of the subject is well known and well founded, and he has given lectures and demonstrations at universities, museums, and conferences in the United States and abroad. Since 1965 his work has been supported by the National Science Foundation in two generous grants to the Idaho State University Museum. These grants have supported the writing and editing of several scientific papers, experimental high speed movies of his flaking techniques, and travel to examine collections at major universities and museums. The production of the film, *The Shadow of Man*, by the Idaho State University Museum has been made possible by the support of the experimental program in flintknapping by the National Science Foundation.

The Shadow of Man was produced by the Idaho State University Museum with the assistance of the National Science Foundation and directed by Earl H. Swanson. Supervision and photography are by Norm Holve of the Idaho State University News Bureau with narration by Charles E. Bilyeu of the ISU Department of Speech and Drama.



THE SHADOW OF MAN

16 mm, color, SOF, 28½ min. Purchase: \$350 Rental: \$16 for one day

<i>Purchase</i>	<i>Rental</i>	<i>Preview prior to</i>
_____	(date) _____	purchase (date) _____

Alternate date

Name: _____

Address: _____

City: _____ State: _____ Zip: _____

This film is available for rental or for purchase. It is also available for preview prior to purchase without charge except for payment of return special delivery postage and insurance. When ordering a print for rental, please list one or more alternate dates and order well in advance. Requests for preview prints should be made for "first available date" if possible.

Mail order form to: **Idaho State University**
Audio-Visual Services
ISU Campus Box 64
Pocatello, Idaho 83201

Advance payment enclosed _____
Purchase order enclosed _____
Send invoice with print _____