

Informational Materials



Incorporated

FILM CATALOGUE

Burbank, California



Informational Materials Incorporated

1615 West Burbank Blvd. · Burbank, California 91506

(213) 843-0373

843-0377

FILM CATALOGUE

General Information and Policies

PURCHASE — All films included in this catalogue are available for outright purchase for non-theatrical use. These films are copyrighted and their acquisition does not convey permission to duplicate, transfer to tape, use on television or be shown where admission is charged. Prices apply in the United States only and are subject to change without notice. International prices forwarded on request. Film prints are subject to California sales tax, when applicable. Shipping charges will be added to the invoice, FOB Burbank, California.

PREVIEW PRINTS — Preview prints are available for purchase consideration only, without charge, except for return postage and insurance. All preview prints are in 16mm. The normal preview period is two weeks. A longer preview is possible by special arrangement. A previewer is responsible for the film until it is returned, prepaid, to the IMI library.

RENTAL — As a customer service, all motion pictures listed in this catalogue are available for rent from IMI on the following rate schedule.

Rental — all titles: 1 to 3 days — \$25.00

All rental charges apply to purchase price on orders received within 60 days of rental. Please give at least 30 days advance notice for specific rental date and indicate alternate date. Cancellation of a confirmed rental date must be received at least fifteen days prior to show date, otherwise rental fee will apply.

FORMATS AVAILABLE — All film subjects are available on video cassette at list price, plus 15%. When ordering, specify format and cartridge requirement. For Super 8mm release prints, specify projector manufacturer and model number. Costs predicated on 16mm prices plus \$15.00 for Super 8mm cartridge.

REPLACEMENT FOOTAGE — Sections of film are available for all films at the rate of \$.40 per foot, 16mm color, with a fifty foot minimum billing per section. For inspection, insertion of footage and cleaning, there is a \$15.00 service charge.

DAMAGED PRINT — Films previously purchased from the IMI library that are beyond repair, may be exchanged for a new print at the catalogue price, *less 20%*.

PRINT PROTECTION — All IMI films are chemically treated to give longer life by making them scratch resistant, pliable and resilient.

STUDY GUIDES — Study guides are available for all titles and accompany preview and sale prints.

SUBJECT LEVEL CODES — The following codes are suggestive for audience levels as follows:

- P — Primary*
- I — Intermediate*
- J — Junior High*
- S — Senior High*
- C — College*
- A — Adult*

Titles

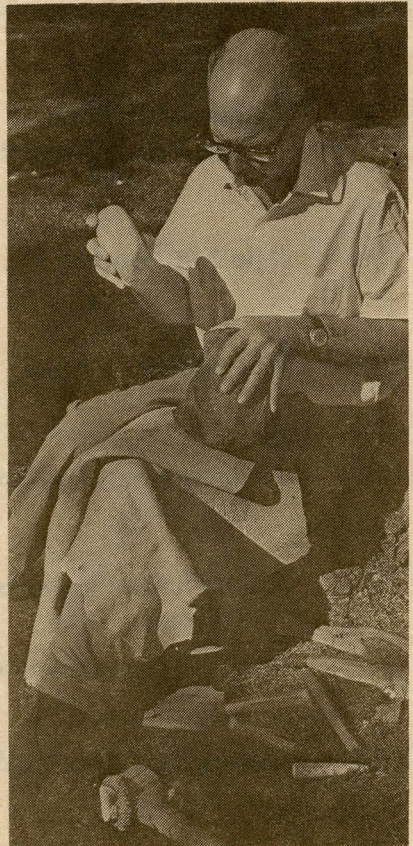
FILM #

10-103	The Alchemy of Time	26 minutes	\$335.00
10-101	Ancient Projectile Points	28 minutes	345.00
10-104	Communications — The Printed Word	17½ minutes	245.00
10-100	The Flintworker	25 minutes	315.00
10-102	The Hunter's Edge	28 minutes	345.00
10-111	Identification Leader — Learning	:25 seconds	4.25
10-112	Identification Leader — Services	:25 seconds	4.25
	<i>(See description for quantity price schedule)</i>		
10-108	Ocean Corridors to World Trade	15 minutes	225.00
10-109	Olympic Archery — The Inner Contest	12½ minutes	190.00
10-106	Our World Is An Island	17 minutes	245.00
10-105	The Silent World of Jim	14 minutes	225.00
10-107	Shakespeare Primer	26 minutes	335.00
10-110	Tradition On Parade	31 minutes	350.00

The Alchemy of Time

THE TOOLS OF EARLY MAN SERIES

This film discusses the probable use of heat treating as a step in the manufacturing of lithic tools made by Early Man. The heat treating process served to anneal lithic materials rendering them easier to flake. The film focuses on the making of Folsom, Clovis and Cumberland fluted projectile points from heat treated material and discusses how different lithic materials required varied temperature ranges during heat treating and cooling periods. Features the world-renowned flintworker, *Don Crabtree*. A National Science Foundation endowed film series.

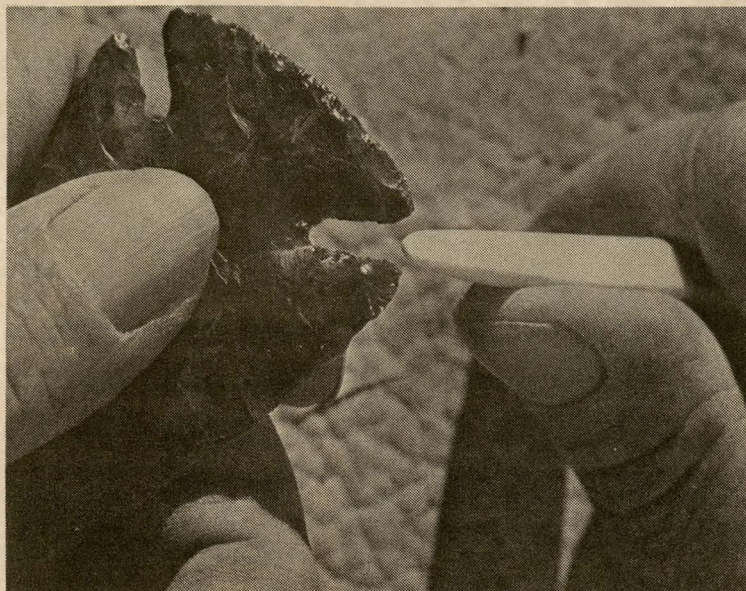


Film #10-103, 16mm/Color, 26 minutes — ISU/IMI, S-C-A — \$335

Ancient Projectile Points

THE TOOLS OF EARLY MAN SERIES

This film demonstrates the techniques and tools used by Early Man when pressure flaking projectile points from lithic materials. Projectile points of the type shown have been found in many parts of the world. Although the function of these points are similar, their

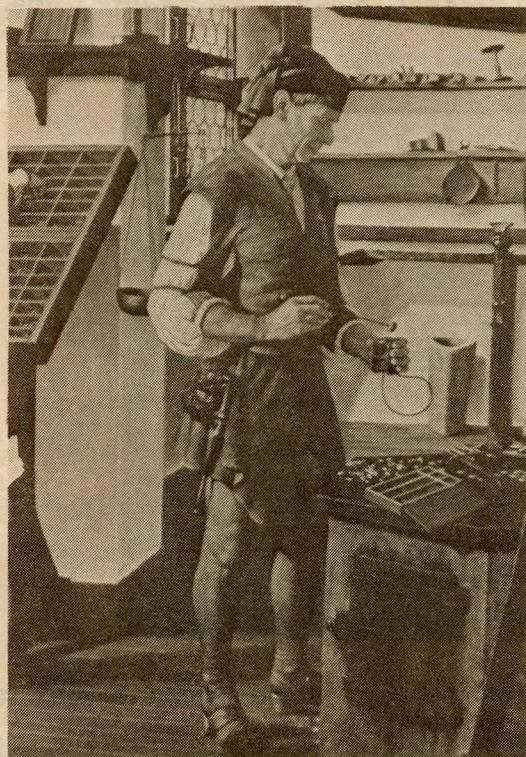


individuality suggest a variety of tools used in their manufacture. It is believed that points such as those shown and discussed are related to the rapid expansion of human population in the New World. Features the world-renown flintworker, *Don Crabtree*. A National Science Foundation endowed film series.

Film #10-101, 16mm/Color, 28 minutes — ISU/IMI, S-C-A — \$345

Communications: The Printed Word

This film traces the history of printing and man's effort to communicate with the printed word beginning with papermaking in Egypt about 1000 BC. The major events of printing are interpreted chronologically to the present day. The sequences include the development of the Roman alphabet, Charlemagne's preservation of early Greek and Roman history, Chinese printing, Italian papermaking, Johann



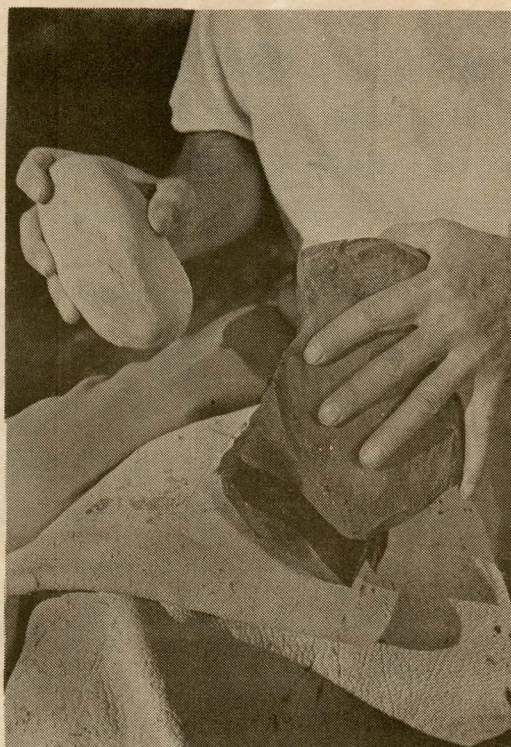
Guttenberg's contribution to printing, the development of type styles, "paper back" editions of early Grecian writings, Shakespeare and the elevation of the English language to eminence, a court case interpreting freedom of the press, Benjamin Franklin's publishing of "Poor Richard's Almanac", the accidental discovery of lithography, the first paper-making machine, the first power press, the discovery

of the half-tone process, the invention of the linotype and the monotype machines, the accidental discovery of offset printing and present day printing technology. The films sets into perspective the major advancements of the art of printing as it traces the history of printing.

Film #10-104, 16mm/Color, 17½ minutes — IMI, J-S-C-A — \$245

The Flintworker

THE TOOLS OF EARLY MAN SERIES

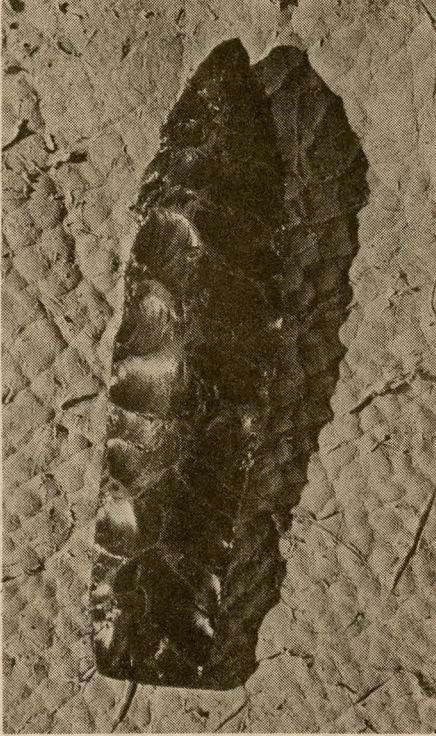


This film explains the basic concepts of lithic technology, the making of stone tools. Nearly two million years ago man first began to work stone into useful tools using a technique called the cone principle, the ability to predetermine where and how stone frac-

tures. The film shows how cones are formed inside obsidian rock. This process is compared to that of a BB striking a pane of glass. The basic terminology of Flintworking is shown with artistic drawings. Stone implements such as an ax and cleaver are also shown being made. Features the world-renown flintworker, *Don Crabtree*. A National Science Foundation endowed film series.

Film #10-100, 16mm/Color, 25 minutes — ISU/IMI, S-C-A — \$315

The Hunter's Edge



THE TOOLS OF EARLY MAN SERIES

This film demonstrates the techniques used by Early Man in blade making both by pressure and percussion flaking. Detailed artist drawings illustrate core and blade types and terminology. The film discusses in detail the methods used by Early Man in core making and how these cores were held in crude vises for

pressuring-off flakes. A Sheritaki core is shown being replicated, as are miniature blades being made using the microburin technique. Other geometric forms such as lunates, serrated blades, end scrapers, burins and double burins are also shown along with numerous other tools and simulated weapons. Features the world-renown flintworker, *Don Crabtree*. A National Science Foundation endowed film series.

Film #10-102, 16mm/Color, 28 minutes — ISU/IMI, S-C-A — \$345

Identification Leaders

"Learning" — "Services"

A most unique, efficient, expendable money-saving system to help prevent damage to your valuable 16mm films while maintaining the integrity of your film library operation. Two stock, 16mm color/sound leaders are available — each :25 seconds in length.

When spliced onto the head-end of your library prints, the IMI Identification Leaders absorb the normal wear and tear associated with mis-threading of film projectors. If damage does occur, it will affect the IMI Leader, not your valuable film print. With a new leader affixed to the head-end of the film, that print will remain in circulation instead of being set aside awaiting a costly replacement section.

IMI Leaders include a title that states the film has been provided from your "Audio Visual Department". On quantities of over 300 prints, a title change giving *individualized* credit to your school system or library is included in the price of the prints. On quantities of less than 301 prints, a title change will cost an additional \$175, a one-time charge. Minimum quantity order or re-order is 24 prints.

The leaders are priced as follows:

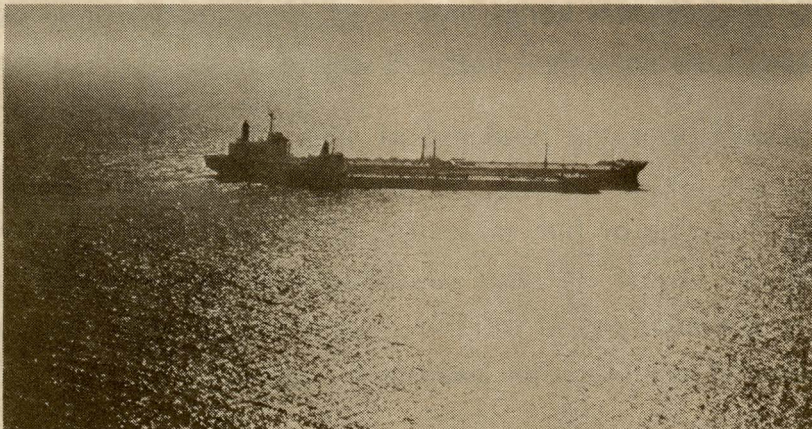
QUANTITY	COST
24 to 300	\$4.25
301 to 600	3.95
601 to 1000	3.70
1001 and over	3.25

Film #10-111 — "Learning" — Color :25 seconds — IMI

Film #10-112 — "Services" — Color :25 seconds — IMI

Ocean Corridors To World Trade

This film tells the story of how, through maritime trade, the oceans of the world have helped shape man's destiny. Because of ocean trade among all countries, the oceans help bring the people of the world together creating an interdependence among world countries.



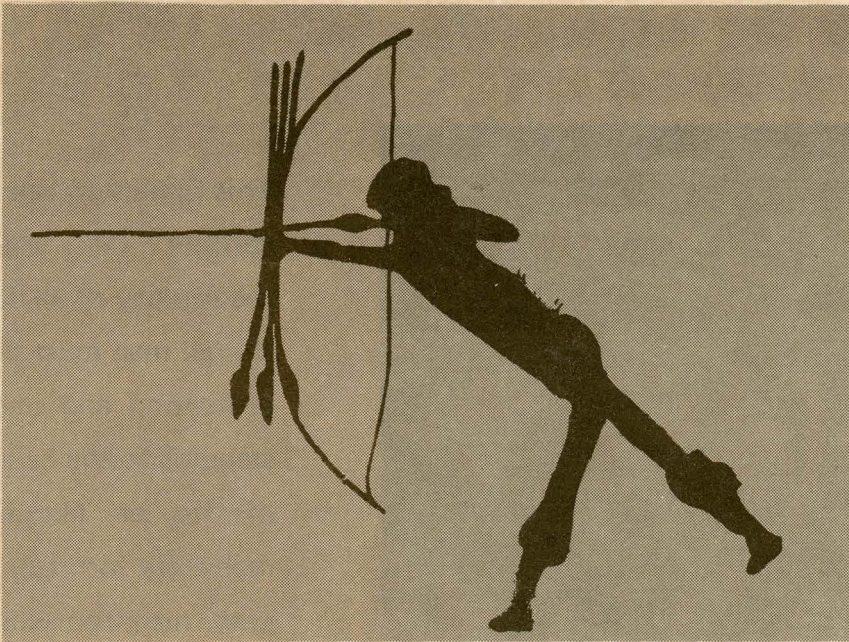
Throughout history, ocean commerce has given rise to world population centers which in turn have stimulated growth, development and expansion. Today, a modern world port is actually a city within a city as it provides jobs and services to many thousands of people. All modern day cargo handling techniques found at a modern harbor are shown and explained.

The film traces the two historical technological breakthroughs in world maritime trade — the advancement from sail to steam power and the international cooperation among all nations of the world to standardize container shipping. This film will bring a new awareness of the importance of world maritime trade.

Film #10-108, 16mm/Color, 15 minutes — IMI, I-J-S — \$225

Ce.30.1-3.2

Olympic Archery: The Inner Contest

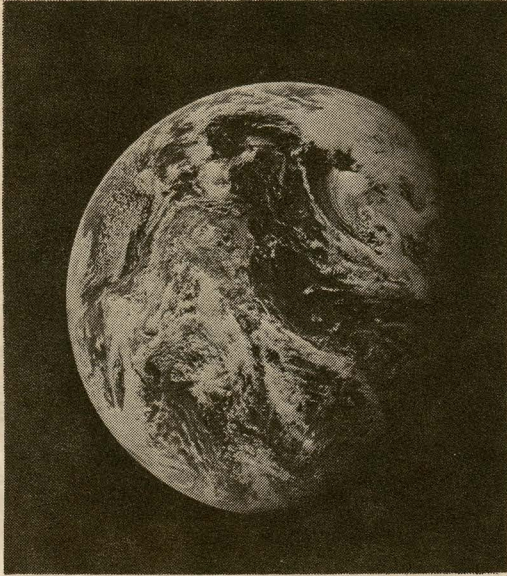


This film offers a rare insight into the sport of archery. Ten thousand years ago, man first began to use possibly his most important invention — the bow and arrow. Success brought harmony to the body and the mind — the key to survival. Shooting the bow and arrow demanded extraordinary effort . . . bringing together physical capability with concentration of mind.

Against the backdrop of the Olympics in Montreal, Canada, this film captures the intensity, skill and drama of Olympic competition as we follow the men's and women's events, both won by Americans. The challenge is one of inner conflict, of concentration, of stamina. The camera follows the winners as we learn, through their own voices, what it is that separates winners in any competition. This film offers insight into focusing one's mind on accomplishment and achievement.

Film #10-109, 16mm/Color, 12½ minutes — EA/IMI, J-S-A — \$190

Our World Is An Island



This film interprets the concept that among the ecology of all living things, man must bring protection and understanding to the balance of life, or, like with many life forms of the past, man too will be on the road to extinction.

This film, photographed on a small, isolated, offshore island, interprets the relationship of life found there and projects these relationships into the world concept that life in dis-equilibrium, has limitations. This island's history is traced from its volcanic origins through the geo-physical changes that have taken place both before and after man's presence. It demonstrates that with all life forms, change is a constant process of natural selection and adaptation, and that man today is learning to regard his world with responsibility rather than just opportunity. Designed as a primer for the study of ecology.

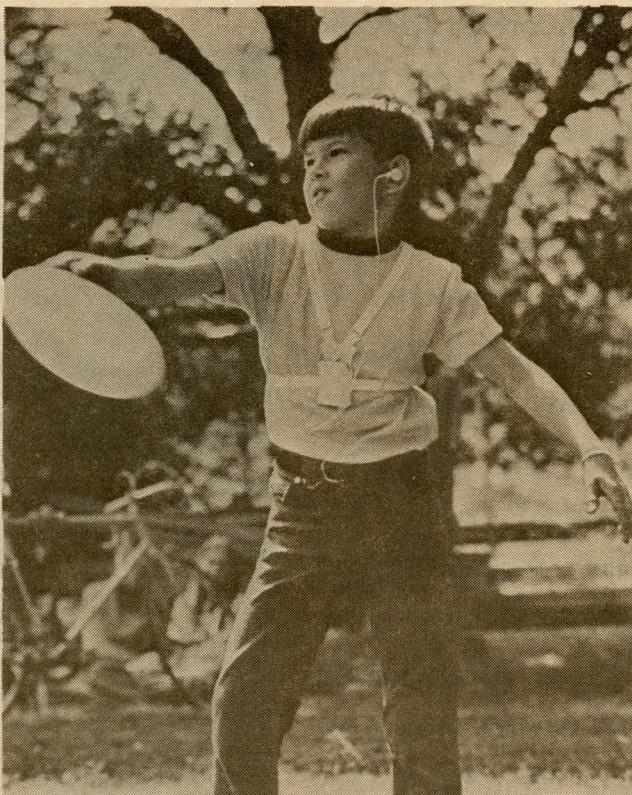
Film # 10-106, 16mm/Color, 17 minutes — IMI, I-J-S — \$245

Ce. 30. 1. 3. 3

The Silent World of Jim

Introduction by Nanette Fabray

The concepts of safety for any youngster are difficult to comprehend. For deaf children, the task is almost insurmountable. This film/film-strip/coloring book teaching unit brings understanding and comprehension of the concepts of safety to those who are deaf as well as to those who can hear.



The film is a language-arts story of Jim, an actual deaf boy, and his near tragic accident due to being deaf. Fortunately, his parents save him and instruct him in the numerous safety concepts that must be understood by all students on their way to and from school.

The film motivates, the filmstrip allows for programmed learning on an individual or a group basis and the coloring book allows parents or guardians too, to become involved in support of teaching safety.

Filmstrip — 21 frames - color - captions — \$10.00

Coloring book — 20 copies minimum — \$20.00

100 copies — 75.00

Film #10-105, 16mm/Color, 14 minutes — GT/IMI, P-I — \$225

Shakespeare Primer

Featuring Hans Conried

Hans Conried, narrator, actor and story-teller takes the viewer "*into Shakespeare*" making Shakespeare come alive as he interprets the meaning that has sustained Shakespeare's plays for over four hundred years. The plays include Richard III, Romeo and Juliet, Hamlet, The Merchant of Venice, King Lear and MacBeth. The setting is the Shake-



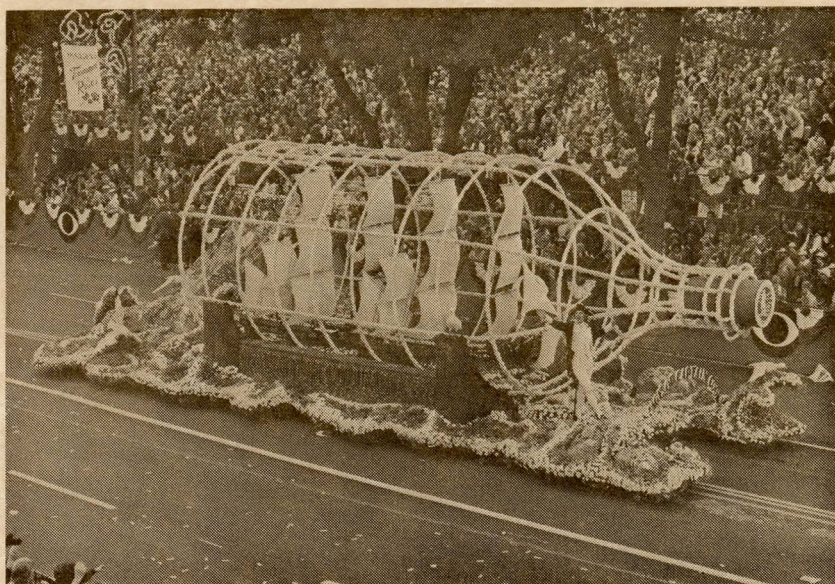
spearean Court at Scripps College which is surrounded by the famous John Gregory sculptures, which illustrate scenes from these important plays. With clever lighting, camera and acting techniques the statues "come alive" with Mr. Conried both hosting and acting. A primer for all Shakespearean teaching.

Film #10-107, 16mm/Color, 26 minutes – DB/IMI, S-C-A – \$335

Ce.30.1.3.4

Tradition On Parade

This is the behind-the-scenes story of the Rose Parade and all the color and pageantry that annually come together in Pasadena, California. The film provides viewers an insight into the Tournament of Roses as we are taken backstage and back through history to the beginning in 1890. We see the tradition of the Queens and her Royal



Court, the Grand Marshalls and the sporting events, from chariot racing to football. From horsedrawn floats of yesteryear to the most dazzling floats ever created, we witness the time and energy required to stage this annual event. This film will not only make the viewing of any Tournament of Roses parade more enjoyable, but will make you proud to be witness to an American tradition.

Film # 10-110, 16mm/Color, 31 minutes — TOR/IMI, I-J-S-C-A — \$350

Ce-30.1.3.5

INTERNATIONAL PATENT & TRADE MARK
100 West 42nd Street
New York, N.Y.
U.S.A.

INFORMATIONAL MATERIALS INC.

1615 West Burbank Boulevard

Burbank, California 91506

(213) 843-0377 843-0373