



K. TROWER

1911

I hope you are progressing rapidly. I am looking forward to the interview that we have planned.

Please let me know when you are ready.

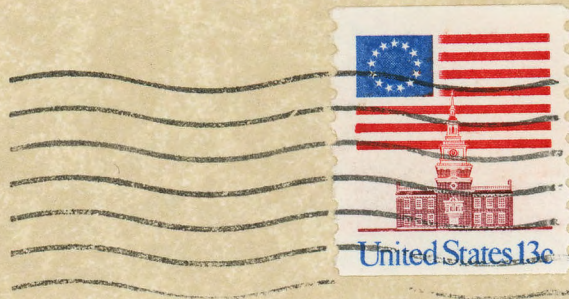
Sincerely,
Gene Gent



I hope you are
happy. I am
the intention that
there is no
you are
I am
I am

Irene Link
Route 1 Box 267
Hansen, ID. 83334

ce.6.4, 26.2



4D6-1

Don Crabtree
Magic Valley Memorial Hospital
Twin Falls, ID. 83301

