

VF 184

# DON'T DAM The Clearwater!



**DON'T CHANGE  
THIS . . .**

**TO THIS**

**COMMITTEE FOR  
THE PRESERVATION OF THE CLEARWATER  
3519 13th STREET, LEWISTOWN, IDAHO**

*In cooperation with*

**CITIZENS COMMITTEE ON NATURAL RESOURCES  
2140 P STREET, N. W., WASHINGTON 7, D. C.**



## DO YOU WANT

← **THIS** — **OR** — **THIS** →

**WIPE OUT**—Runs of Steelhead Trout, Chinook Salmon, and hundreds of miles of cascading mountain streams.

**FLOODED**—Vital winter ranges of Elk, Mule Deer, and White-Tailed Deer.

**SCARRED AND DENUDED**—Hillsides and valleys; wild and natural beauty ruined by fluctuating shorelines of artificial reservoirs.

**GONE FOR ALL TIME**—48 miles of the magnificent gorge of the North Fork of The Clearwater River.

### HETCH HETCHY HAS HAD IT

WHY? People were fooled by the old refrain "There are no alternatives; we must have Hetch Hetchy." There were alternatives then. There still are. Just a few miles down stream was another site that would have met the needs without the resulting devastation. Because of this action the beautiful counterpart of neighboring Yosemite valley, Hetch Hetchy valley was blotted out—a mistake that cannot be changed.

Wild country—rich in native trout and big game.

The splendor of great forests and rock-rimmed mountain ranges.

Dashing, unspoiled, crystal-clear mountain streams.

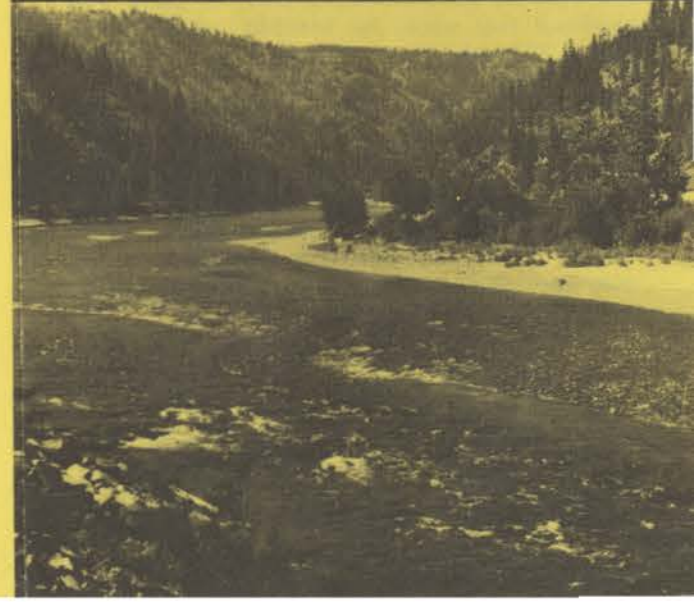
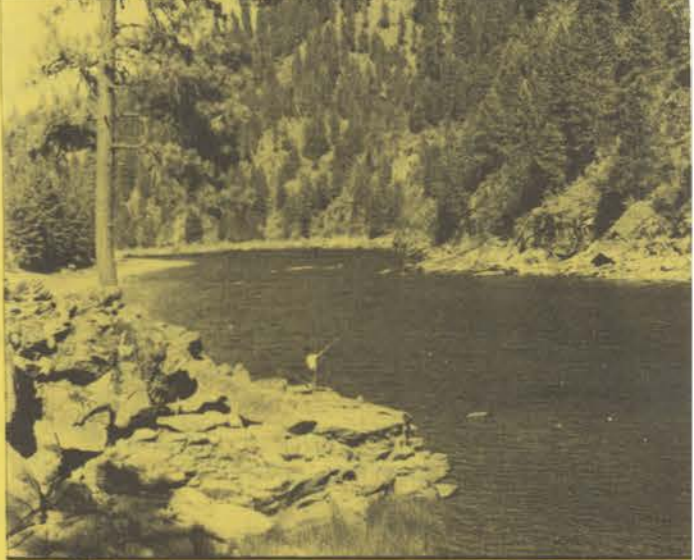
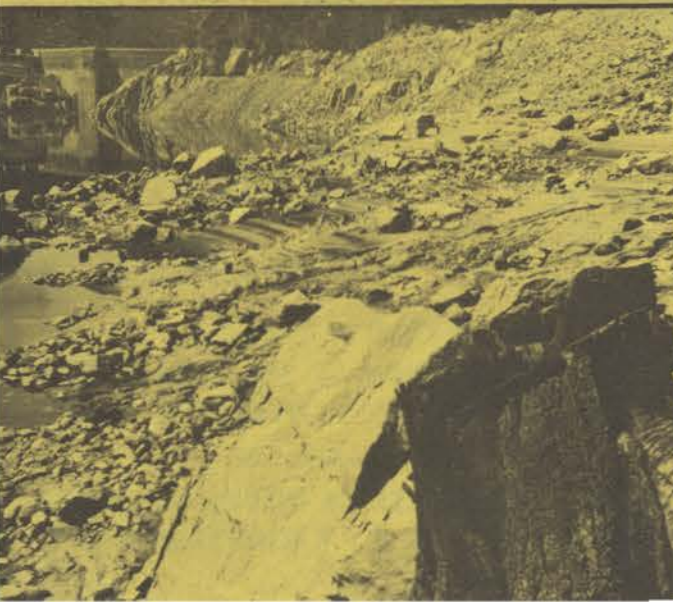
The scenic majesty of canyon gorges.

### IT NEED NOT HAPPEN HERE

There are alternatives to Bruces Eddy that will meet the requirements of flood control and hydroelectric power. But once again, the arguments are marshalled that only Bruces Eddy can meet the needs. Once again, there will be specific benefits to some. Though constructed by public funds, power companies will sell power. Lumber companies can transport more lumber at less expense. The local community will receive benefits from construction activity. Whatever the merits of specific benefits, they cannot surmount the fearsome cost of irreplaceable resources to the nation. Bruces Eddy, once done, cannot be undone.

### YOU CAN PREVENT THIS DESTRUCTION

*Write your Representative, your Senators, and the President why you oppose Bruces Eddy Dam*







### WHAT IS THE CURRENT THREAT?

Bruces Eddy Dam is included in the Omnibus Rivers and Harbors Bill. Its proponents will make every effort to have this Congress authorize the project before the studies on fish, wildlife, and recreation are completed.

### WHAT RESOURCES WOULD BRUCES EDDY DAM DESTROY?

**FISH:** Bruces Eddy Dam, 570 feet high, would mean the end of steelhead trout and chinook salmon runs. Some of the best trout fishing in North America would be wiped out.

In 1955, more than 42,000 trout were caught by fishermen on the North Fork; 60% of these were steelhead that would be knocked out by Bruces Eddy! Although once blocked by a low downstream dam, the present runs of steelhead trout show a great potential for increase. Bruces Eddy would prevent this recovery of a valuable fisheries resource.

**GAME:** The largest elk herd in the world winters along the Clearwater. In low valley wintering areas, like the 48-mile length of canyon that would be flooded by Bruces Eddy Dam, thousands of elk, mule deer, and whitetailed deer starve when severe winters bring food shortages.

State and Federal wildlife agencies have begun studies authorized by Congress to learn the extent of the destruction of game range by the Bruces Eddy project. Dam supporters want Congress to authorize the dam before these investigations are completed. Aside from wasting the public funds that have been spent on the studies, if this "cart before

the horse" approach is followed, it will mean that the devastating effects of this dam on fish, wildlife, and other outdoor recreation resources will not be determined until the dam building already is under way!—Then no one can undo the destruction!

**SCENIC BEAUTY:** Bruces Eddy Dam would flood thousands of acres of the North Fork of the Clearwater Canyon. Scenic drives through winding, forested canyons, along one of the most beautiful mountain rivers of the Northwest, would be replaced by an artificial reservoir, ugly scarred canyon walls, stump fields, and mud flats.

Thousands of people from over the entire country now visit the Clearwater. Bruces Eddy Dam would sacrifice a great part of the promising recreational future of the North Fork. Use of the flooded area by fishermen, hunters, hikers, and other outdoor enthusiasts would drop practically to zero.

### WHAT ARE THE ALTERNATIVES TO BRUCES EDDY?

The most serious flood threat is on the Columbia River and certain tributaries—not on the Clearwater. Since records have been kept, this river has flooded only twice (in 1933 and 1948).

Other dam sites are superior to Bruces Eddy in meeting this primary flood threat, and each would provide greater capacity for power without destroying valuable wildlife and scenic resources. Each of the alternate sites available would provide well over twice the water storage capacity of Bruces Eddy, and each of them would provide an installed capacity for hydroelectric power two to three times that available at Bruces Eddy.

### PAST REJECTIONS OF BRUCES EDDY

Several unsuccessful attempts have been made by the Corps of Engineers to get Congressional authorization and appropriation for Bruces Eddy Dam. The first, in 1954, died in committee without action.

In 1955, strong public protest blocked a \$100,000 detailed planning appropriation for Bruces Eddy in the Public Works appropriation bill. Attempts to gain appropriations in 1956 met similar defeat. But in August, 1956, Bruces Eddy Dam got through Congress by Senate amendment in the giant \$1.6 billion Omnibus Rivers and Harbors Bill, a package authorization of hundreds of river and harbor developments throughout the entire country. The amendment to include this project met with strong bi-partisan opposition from leading conservation spokesmen in Congress, but only hurried hearings were held by the Senate Committee. The entire bill was killed by President Eisenhower, who said, in his veto message, that Congress had acted on "incomplete information" in authorizing many of the projects in this bill.

### WHAT YOU CAN DO AND PLEASE HURRY

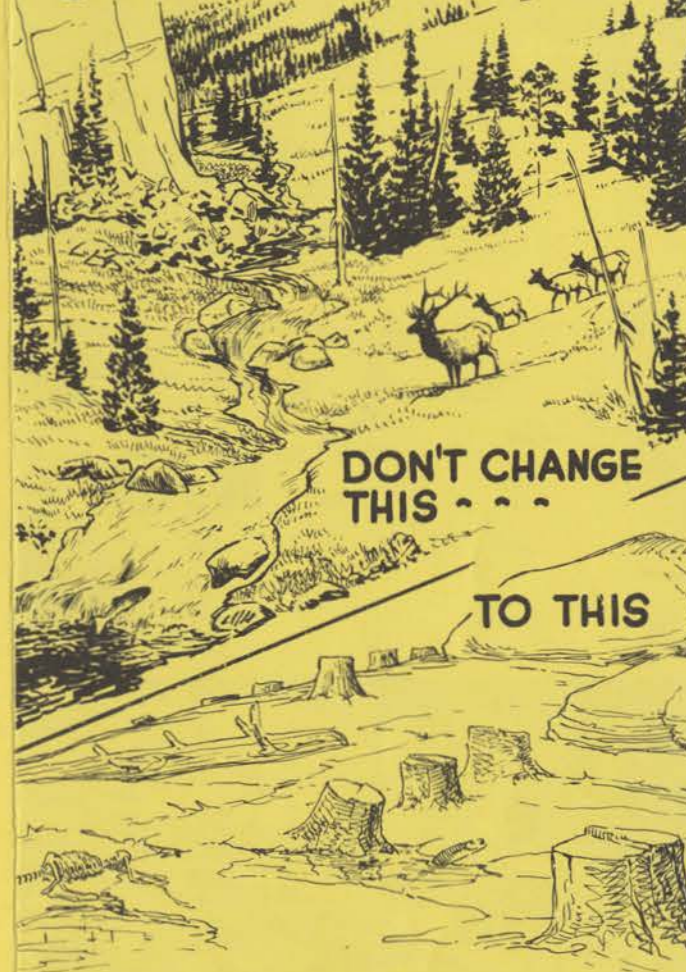
Let your Representative in Congress, your Senators, and the President know where you stand. The only address you need is Washington 25, D. C.

### CONSERVATION GROUPS ALREADY OPPOSING BRUCES EDDY DAM

- Citizens Committee on Natural Resources
- Committee for The Preservation of The Clearwater
- Federation of Western Outdoor Clubs
- Idaho Wildlife Federation
- Izaak Walton League of America
- Minnesota Conservation Federation
- National Audubon Society
- National Camper & Hikers Association
- National Parks Association
- National Wildlife Federation
- Oregon Division of The Izaak Walton League
- Oregon Wildlife Federation
- Outdoor Writers Association of America
- Sierra Club
- Sport Fishing Institute
- The Wilderness Society
- Wildlife Management Institute

You can help provide the needed protection of wildlife and recreational values of the Clearwater by sending a check or money order to:  
 Save the Clearwater Fund  
 c/o Citizens Committee on Natural Resources  
 2140 P Street, N.W., Washington 7, D. C.

# DON'T DAM The Clearwater!



COMMITTEE FOR  
 THE PRESERVATION OF THE CLEARWATER  
 3519 13th STREET, LEWISTOWN, IDAHO

In cooperation with  
 CITIZENS COMMITTEE ON NATURAL RESOURCES  
 2140 P STREET, N. W., WASHINGTON 7, D. C.