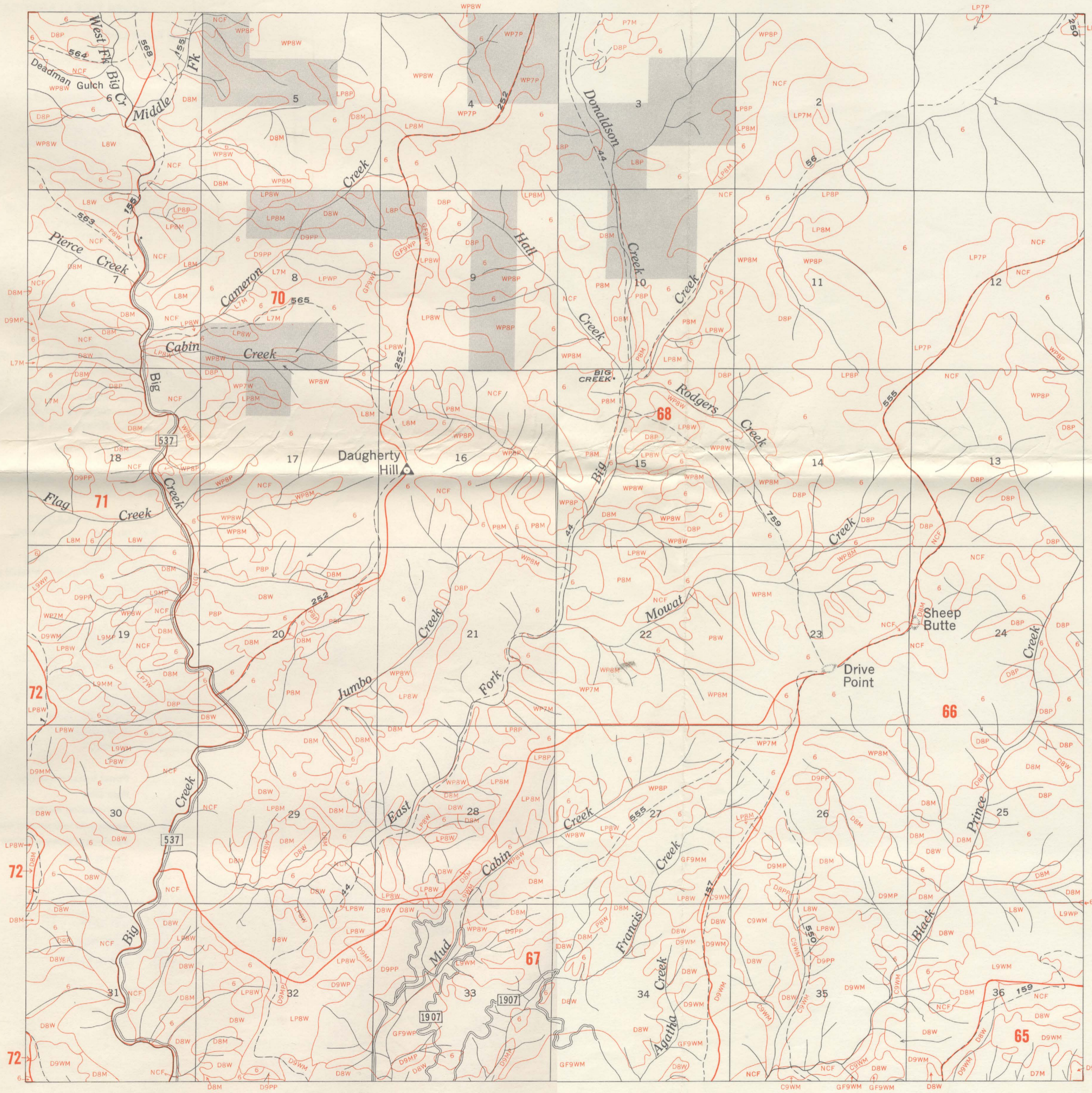


U. S. DEPARTMENT OF AGRICULTURE
 FOREST SERVICE
ST. JOE NATIONAL FOREST
 T46N R3E BM
 1960 TIMBER INVENTORY



COVER TYPE CLASSIFICATION

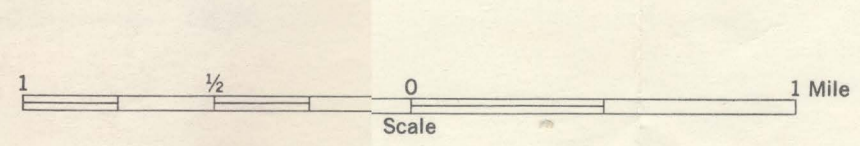
- Commercial Forest Land**
- AF ----- Alpine and Corkbark Fir
 - C ----- Western Red Cedar
 - D ----- Douglas Fir
 - GF ----- Grand Fir
 - H ----- Hemlock
 - MH ----- Mountain Hemlock
 - WH ----- Western Hemlock
 - L ----- Western Larch
 - LP ----- Lodgepole Pine
 - P ----- Ponderosa Pine
 - S ----- Englemann Spruce
 - WP ----- Western White Pine
 - WLP ----- Whitebark Pine
 - A ----- Aspen
- Non-commercial Forest Land**
- NCF
- Non-forest Land**
- NF
 - NO

- STAND SIZE CLASSES**
- 9 ----- Sawlog stand 11 in. dbh and large
 - 9A ----- Small Sawtimber 11 in.-20 in. dbh
 - 9B ----- Large Sawtimber 21 in. dbh and larger
 - 8 ----- Pole stand 5 in.-10.9 in. dbh
 - 7 ----- Seedling and Sapling stand 0-4.9 in.
 - 6 ----- Nonstocked 0-9

- SITE CLASSES**
- G ----- All of Site Class I, part of II
 - M ----- Part of Site Class II, all of III, part of IV
 - P ----- Part of Site Class IV, all of V and VI

- STOCKING CLASSES**
- W ----- Well stocked 70-100%
 - M ----- Medium stocked 40-69
 - P ----- Poorly stocked 10-39
- Where dually designated, first symbol crown coverage by pole and sawtimber classes; second symbol stocking by crown coverage by sawtimber only

- LEGEND**
- State Boundary Line
 - County Boundary Line
 - Medium duty hard surfaced road
 - Good motor road
 - Poor motor road
 - Railroad
 - Trail
 - Power transmission line
 - Pipe Line
 - △ Triangulation station
 - △ Permanent lookout and triangulation station
 - △ Permanent lookout station
 - Campground
 - Building
 - Schoolhouse
 - Mine or Quarry
 - 10 U.S. Route
 - 20 State Route
 - 433 Forest Service



- Non Forest Ownership
- Timber Type Line
- 123 Compartment Boundary Line and Number
- Similar Type