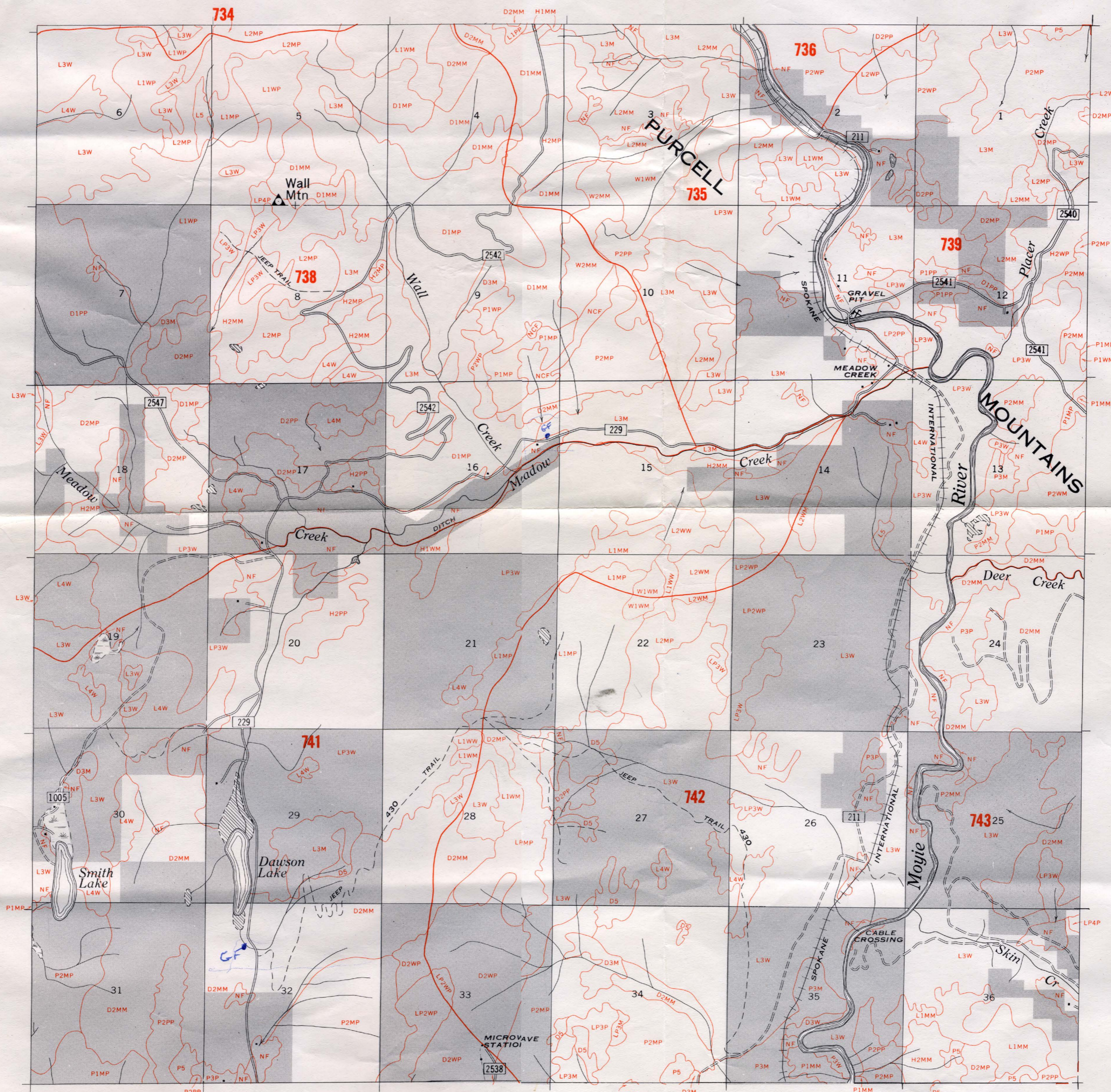


U. S. DEPARTMENT OF AGRICULTURE  
FOREST SERVICE

KANIKSU NATIONAL FOREST

T63N R2E BM

1961 TIMBER INVENTORY



COVER TYPE CLASSIFICATION

Commercial Forest Land

- AF ----- Alpine Fir
- C ----- Western Red Cedar
- D ----- Douglas Fir
- H ----- Hemlock
- HD ----- Hardwoods
- L ----- Western Larch
- LP ----- Lodgepole Pine
- P ----- Ponderosa Pine
- S ----- Englemann Spruce
- W ----- Western White Pine
- WLP ----- Whitebark Limber and Bristlecone Pine

Non-commercial Forest Land

NCF

Non-forest Land

NF

STAND SIZE CLASSES

Sawtimber (9.0 in. dbh)

- 0 ----- Sawtimber not classified
- 1 ----- Sawtimber Mature-over rotation years
- 2 ----- Sawtimber Immature-under rotation years

Poletimber (5.0-8.9 in. dbh)

- 3 ----- Poletimber Immature-under rotation years
- 7 ----- Poletimber Mature-over rotation years

- 4 ----- Seedling and Sapling stands (0-4.9 in. dbh)
- 5 ----- Nonstocked

STOCKING CLASSES

- W ----- Well stocked 70-100%
- M ----- Medium stocked 40-69
- P ----- Poorly stocked 10-39

Where dually designated, first symbol crown coverage by pole and sawtimber classes; second symbol crown coverage by sawtimber only

LEGEND

- State Boundary Line
- County Boundary Line
- Medium duty hard surfaced road
- Good motor road
- Poor motor road
- Railroad
- Trail
- Power transmission line
- Pipe Line
- △ Triangulation station
- △ Permanent lookout and triangulation station
- △ Permanent lookout station
- ▲ Campground
- Building
- Schoolhouse
- Mine or Quarry
- 10 U.S. Route
- 20 State Route
- 433 Forest Service

Non Forest Ownership

Timber Type Line

123 Compartment Boundary Line and Number  
Similar Type

