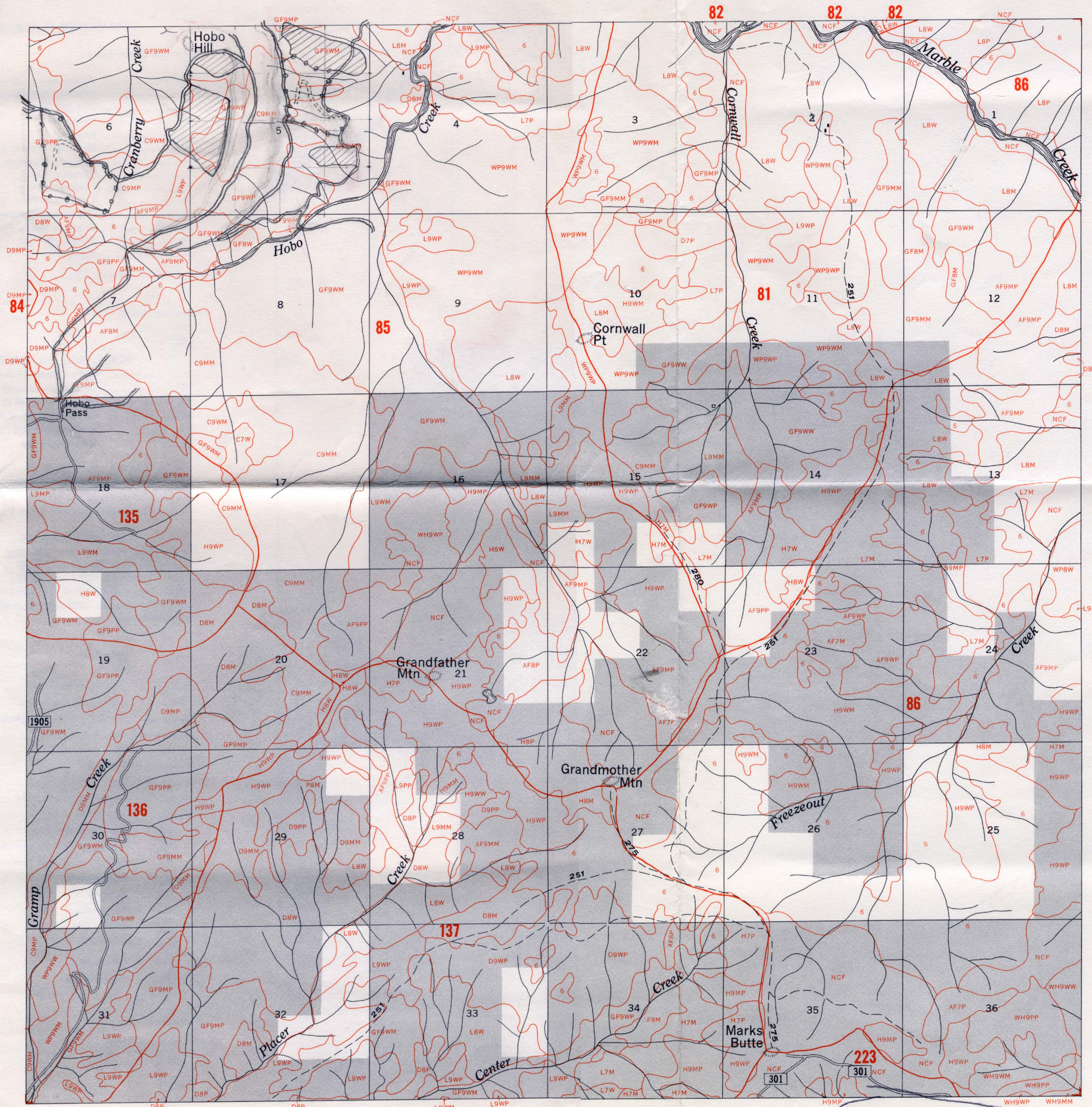


U. S. DEPARTMENT OF AGRICULTURE  
 FOREST SERVICE  
**ST. JOE NATIONAL FOREST**  
 T43N R3E BM  
 1960 TIMBER INVENTORY



**COVER TYPE CLASSIFICATION**

**Commercial Forest Land**

- AF ----- Alpine and Corkbark Fir
- C ----- Western Red Cedar
- D ----- Douglas Fir
- GF ----- Grand Fir
- H ----- Hemlock
- MH ----- Mountain Hemlock
- WH ----- Western Hemlock
- L ----- Western Larch
- LP ----- Lodgepole Pine
- P ----- Ponderosa Pine
- S ----- Englemann Spruce
- WP ----- Western White Pine
- WLP ----- Whitebark Pine
- A ----- Aspen

**Non-commercial Forest Land**

NCF

**Non-forest Land**

NF  
NO

**STAND SIZE CLASSES**

- 9 ----- Sawlog stand 11 in. dbh and large
- 9A ----- Small Sawtimber 11 in.-20 in. dbh
- 9B ----- Large Sawtimber 21 in. dbh and larger
- 8 ----- Pole stand 5 in.-10.9 in. dbh
- 7 ----- Seedling and Sapling stand 0-4.9 in.
- 6 ----- Nonstocked 0-9

**SITE CLASSES**

- G ----- All of Site Class I, part of II
- M ----- Part of Site Class II, all of III, part of IV
- P ----- Part of Site Class IV, all of V and VI

**STOCKING CLASSES**

- W ----- Well stocked 70-100%
- M ----- Medium stocked 40-69
- P ----- Poorly stocked 10-39

Where dually designated, first symbol crown coverage by pole and sawtimber classes; second symbol stocking by crown coverage by sawtimber only

**LEGEND**

- State Boundary Line
- County Boundary Line
- Medium duty hard surfaced road
- Good motor road
- Poor motor road
- Railroad
- Trail
- Power transmission line
- Pipe Line
- △ Triangulation station
- △ Permanent lookout and triangulation station
- △ Permanent lookout station
- △ Campground
- Building
- Schoolhouse
- Mine or Quarry
- 10 U.S. Route
- 20 State Route
- 433 Forest Service



- Non Forest Ownership
- Timber Type Line
- 123 Compartment Boundary Line and Number
- Similar Type