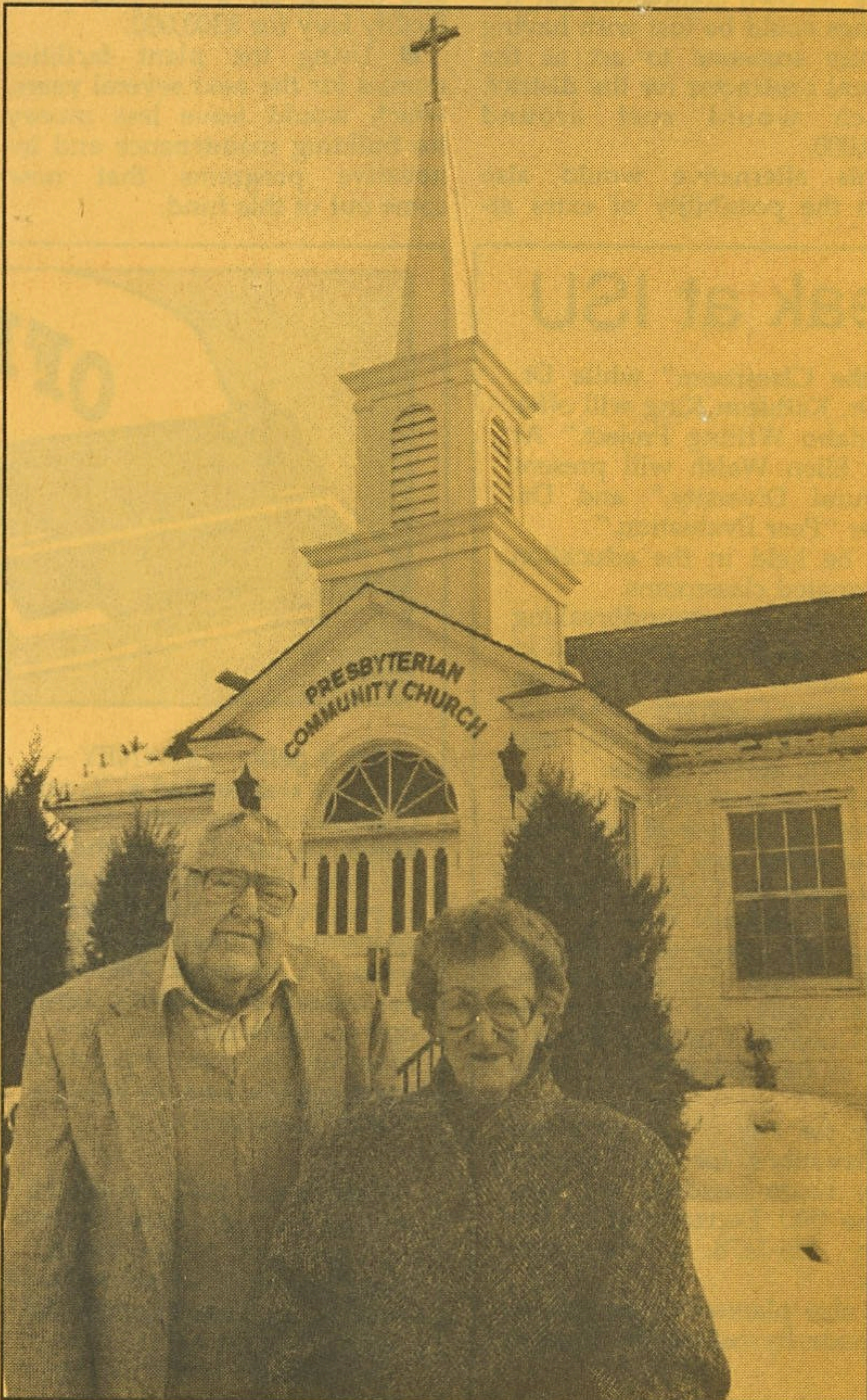


1993



## Preston church gets new steeple



PRESTON

Photo by Paul Johnson

William and Ruth Weber stand in front of the Preston Presbyterian Community Church with new steeple put up in memory of their son, Fred Weber.

The steeple is in memory of Fred Weber, who died in a car crash in 1966 at age of 22.

By Paul Johnson  
For The Journal

PRESTON--Church members, who joined together to donate a 38-foot steeple for the Preston Presbyterian Community Church, saw their efforts pay off as crews erected the structure.

William and Ruth Weber of Preston donated funds for the steeple in memory of their son, Fred. He was a Preston High School graduate who died in a car crash in 1966 when almost 22 years old.

"At the time our son died, a number of people donated funds for a memorial," Weber said. "We added to it over the years and now, 27 years later, the steeple was erected to the glory of God in the memory of Fred Weber."

The towering steeple accents the building and makes it look more like a church, William said. The building originally served as the Glendale LDS Church before being moved to its present site more than 30 years ago.

A local architect, Stephen Szot, designed the steeple at no cost.

"It's just a wonderful addition to the church," said Rev. Johnathan Rice, interim pastor of the Preston church. "The people here in the church should be congratulated for their warm and wonderful efforts."