



Salmon Selway DEFENDER

News and Reports from Idaho's Big Wild

In This Issue:

- Logging Resumes in Cove/Mallard
- Winter Encampment on Noble Creek
- Wolf Reintroduction Goes Astray
- Conversations with a Pioneer
- Battle for the Bull Trout
- GIS: Virtual Forest Watch

Spring 1995

Dear Friends of Cove/Mallard,

Cove Mountain, Mallard Creek, Nobel Creek, Jack Creek; these are places few people venture into. They are special places, remote, unspoiled and little studied. And this is precisely why a pitched battle is being waged over the future of this area and other critically important roadless areas in the Greater Salmon/Selway ecosystem. The wolf, fisher, lynx, cougar, wolverine and the salmon and bull trout need this habitat to survive. So let's keep this in mind when taking stock of our current situation.

In January, the Wilderness Society and the Pacific Rivers Council won a landmark injunction in Federal Court, halting logging, grazing and mining in the Salmon watersheds on six National Forests in Idaho, including the Nez Perce. The Cove/Mallard timber sale, along with 300 other projects were halted. At the time, a federal injunction was still in effect from the Idaho Sporting Congress's lawsuit mentioned in our last issue. Evidently fearing a backlash, the Wilderness Society asked the federal district court Judge David Ezra to stay the injunction, which he did on February 1st. At this point, Red River District Ranger Ed Wood received a letter from the National Marine Fisheries Service declaring the Forest Service as in compliance with their consultation.

Judge MacDonald, who had taken over the Sporting Congress's lawsuit from Judge Ryan and who had granted the original injunction to the Idaho Sporting Congress, promptly lifted it. Ranger Wood, having only six weeks until elk calving season would shut down the Cove/Mallard area until early summer, sent in the chainsaws, fellerbunchers, bulldozers and log trucks, along with a few giant generators and banks of flood lights, and began working around the clock on the ancient stands of ponderosa pine along Nobel creek.

Immediately, the Cove/Mallard Coalition and the Native Forest Network moved into action, sending monitors who camped in the waist-deep snow, to stage a round the clock vigil at the entrance to Nobel creek. After alerting the local, regional and national media we held a mass protest on the Nobel road February 8th. During this protest we

continued on the next page

TABLE OF CONTENTS

Features

- Noble Creek under the Chainsaw 4
- Along the Noble Creek 6
- INTERVIEW: Stewart Brandborg 10
- Upper Columbia River Basin Project 12
- Gray Wolf Reintroduction 14
- Forest Health 19
- Big Chubascos by Ramon 34

Forest Watch

- Payette Salvage 8
- White Sand Creek 18
- GIS: Virtual Forest Watch 16

Legislation

- Idaho Bear Initiative 9
- Craig's Wilderness Bill 20
- NREPA 21

Litigation

- Battle for the Bull Trout 22
- Cove/Mallard
- Legal Update 24

Salmon Selway DEFENDER

EDITOR

Kristin Nelson

STAFF

James Barnes
Kimberly Dawn
Kris Maenz
Michelle Stewart

CONTRIBUTORS

Mike Bader
James Barnes
Catherine Bertagnolli
Greg Brown
Tom Fullum
Dan Funsch
Angie Hampton
Jake Kreilick
Darryl McEcht
Steve Paulson
Dr. Art Partridge
Dr. Chuck Pezeshki
Wayne Price
Mike Roselle
Wally Seeds
Natalie Shapiro
Don Smith
Michelle Stewart
Bethanie Walder

Salmon Selway Defender

127 East Main #319
Missoula, MT 59802
(406) 543-2929
FAX (406) 543-2912
cove@igc.apc.org

The Salmon Selway Defender is published by the Cove/Mallard Coalition. Membership with the Coalition is \$25 year, which includes a subscription to the Defender.

Unsolicited news, reports and photos are strongly encouraged. Please include a self addressed, stamped envelope.

The inside pages are printed on 50% post-consumer waste paper. The cover is made of 100% post-consumer waste paper and is printed with a soy based ink.

were advised by Idaho County Sheriff's officer Scott Malher that we in violation of conspiracy under the new Earth First! Law, and that if anyone attempted to block logging operations we would be charged with a felony.

We then asked Officer Malher if he would arrest everyone present at the protest, and when he replied that he would only arrest those who were guilty of obstruction, I informed him that Tom Fullum and myself could not in good conscience allow additional logging equipment into the Nobel Creek timber sale and would attempt to block any truck attempting to deliver any machines. We then

proceeded to stand in the gate holding signs and banners stating that the ongoing logging was illegal.

When a large truck pulling a lowboy trailer holding a large fellerbuncher pulled up to the gate, Tom and I were placed under arrest and taken to the Idaho County Jail and

booked on felony charges, all of this well covered by the live satellite television crews on hand for the protest.

On March 6, Judge Ezra, after receiving another notice from National Marine Fisheries Service that the Forest Service was in compliance with its biological opinion, lifted the injunction that the Wilderness Society had stayed. The claim of compliance is ludicrous because they have made no effort to comply. At present, the only thing that keeps the chainsaws silent is elk calving season, which is sadly ironic because elk populations will decline along with the vanishing forest canopy.

I guess you would say that things were looking pretty bad at this point, but fate would intervene. By February 15th unusually warm weather had turned the roads to mud and shut down the logging operation on Nobel Creek. On February 27, Judge Michael Griffin dismissed all charges against Tom and I, citing the state's failure to prove a conspiracy had occurred between us. It was evidently not enough that we had obviously conspired with everyone

else via our press release. On the other hand, the Idaho Sporting Congress plans to appeal to the 9th Circuit Court of Appeals and is also planning to sue the National Marine Fisheries Service for abuse of discretion in finding the Forest Service in compliance with their biological opinion.

So there is still much work to do, and we are all very busy. We are using this grace period to redouble our efforts at grassroots organizing and in setting up and maintaining our camp in Dixie to feed and shelter activists who are monitoring the area and preparing for the logging season ahead. We will continue our resistance. In addition, the

grassroots movement in Idaho has been expanding; with the Ecology Center opening a new office in McCall, with Eric Ryburg and Darryl McEcht, The Alliance for the Wild Rockies has opened an office in Boise staffed by Don Smith, and our Moscow office continues to monitor Cove/



Mike Roselle and Tom Fullum, center, blockade the Noble road.

Mallard, file timber sale appeals and provide legal support. Meanwhile organizers from several groups in the coalition will be criss-crossing the state with canvassers, organizers and skill sharing workshops. Seeds of Peace, who has provided invaluable support in running the camp and providing logistical support in many of our actions in the past have returned, camping in below freezing weather and waist deep snow in order to provide warm meals and hot cups of coffee to weary activists who'd mounted an around the clock vigil while the trees from along Noble Creek were carried out on trucks.

So, we still need your support. Please consider joining the Cove/Mallard Coalition. Write your representatives. And, if doing that is not enough, get your butt out here and we will find something for you to do!

For the wild country,
Mike Roselle
Director, Cove/Mallard Coalition



Noble Creek Goes Under the Chainsaw

Logging truck carrying the trees out of Noble creek.

BY JAKE KREILICK & TOM FULLUM

Bad news from the Big Wild of central Idaho. The Forest Service has launched the next phase of its invasion into the Cove/Mallard roadless areas. Logging began on the Noble Timber Sale in January after a nine-month long court injunction was lifted. Mobilizing quickly, veteran forest activists established a winter base camp and began preparations for frontline defense of Cove/Mallard. With the digging of the first snow cave, the fourth year of the campaign officially began.

An equally devastating turn of events has also stunned regional forest activists. A new court injunction was won only days after logging began in Cove/Mallard. This injunction provided the short-lived hope that logging, roadbuilding, mining and grazing activities would stop in six Idaho National Forests. It sought emergency protection of habitat for endangered Sockeye and Chinook salmon. Incredibly, during the first week of their own injunction, the plaintiffs in this lawsuit - the Wilderness Society, Pacific Rivers Council and Sierra Club Legal Defense Club - capitulated to the Forest Service, Justice Department, and Idaho Senator Larry Craig and asked the judge to stay the injunction for 45 days until March 15 (see page two). It is not coincidental that this is the day Shearer Lumber, the local logging company awarded the Noble sale, must stop cutting in the Cove/Mallard area to comply with the start of elk calving season.

is being used by Ron Mitchell of the Idaho Sporting Congress who is seeking a new court injunction to once again halt logging in Cove/Mallard.

The Cove/Mallard Timber Sales are the two most costly Forest Service projects in region 9's history. Slated to take six years to complete, the timber sales, numbering some two hundred, are well behind

Cove/Mallard may represent the largest timber boondoggle in Forest Service history.

schedule. The Forest Service has built only two roads and finished only one timber sale. Initial estimates projected that these timber sales would cost american taxpayers more than six million dollars. Given the additional costs of litigation, law enforcement, and delays from our friend Mother Nature, Cove/Mallard may represent the largest timber boondoggle in Forest Service history.

The area is also unmatched from a biological and evolutionary standpoint. Cove/Mallard lies in the heart of the Greater Salmon-Selway Ecosystem, the largest wild forest left in the lower 48 United States. It is part of the Central Idaho Gray Wolf and Grizzly Recovery Plans and is a place where animals can still roam

Forest activists have regrouped and returned to the backcountry after this latest act of submission by large U.S. environmental organizations. The Native Forest Network and the Cove/Mallard Coalition began work on a grassroots field campaign to contest the Forest Services' criminal mismanagement of Cove/Mallard. Monitoring teams were dispatched to record violations of environmental laws with photos, videos, eyewitness accounts, and affidavits. This evidence

unimpeded by roads and clearcuts.

Resistance to this mega-project increases as people recognize that Cove/Mallard is the symbol of all threats facing unprotected roadless areas in the Northern Rockies. Three long summers of direct action and civil disobedience at Cove/Mallard and now the first winter encampment are solid evidence of this opposition.

In response to the Cove/Mallard campaign, the Idaho State Legislature, at the urging of the timber industry, passed a new state law last July making it a felony to interfere with logging activities. This so-called "Earth First! Law" carries with it up to 5 years in prison and US\$50,000 in fines. Forest activists and civil rights advocates immediately denounced the law, pointing to the chilling attack on the constitutional rights of free speech and civil disobedience.

On February 8th, Tom Fullum (Native Forest Network) and Mike Roselle (Cove/Mallard Coalition) became the first two protesters arrested under the Earth First! Law when they blocked the entrance to the Noble Road. Their purpose was two-fold: they wanted to show the public that the Forest Service was illegally logging Cove/Mallard and they wanted to challenge the constitutionality of the Earth First! Law in court. "We'll fight to protect our constitutional rights with the same spirit and resolve with which we fight for wilderness protection," said Mike Roselle after the action.

Noble, the second of nine sales to be cut at Cove/Mallard, consists of 18 logging units containing 11.5 million board feet. Four clearcuts have already been completed and what was once a diverse pine/fir/spruce forest community now resembles a war zone. A last unit scheduled for winter logging may have been spared for a short time. Presently, local roads are closed to heavy loads including log trucks due to the warm weather. Recently, the base camp activists indicated that the bulldozers, skidders, processors, and feller-bunchers are being pulled from the sale area. In late February, the Forest Service awarded the third sale, Jack Creek, to Shearer Lumber. Activists are already gearing up for another season of road blockades and direct action.

It is urgent that the environmental community show international support for Cove/Mallard. The

Native Forest Network is asking groups to sign on to a letter endorsing the termination of the Cove/Mallard Timber Sales and immediate protection of all remaining roadless areas in the Northern Rockies. International letters of support should be sent to President Bill Clinton. United States citizens can write to Forest Service Chief Jack Ward Thomas or Assistant Secretary of Agriculture Jim Lyons. We are also asking for folks to visit local Forest Service offices to remind them that the Forest Service is not obeying environmental laws designed to protect the public trust. Lastly, appeal to your congressional delegation to sponsor the Northern Rockies Ecosystem Protection Act (NREPA) HR 852 which would permanently protect these wildlands and alleviate pressure from extractive resource industries on 20 million acres of public land (See page 21). Let them know that budget-slashing and bureaucracy-trimming have yet to reach the massive public subsidies given to private timber companies by the Forest Service.

The battle lines are now drawn in Idaho around some of our country's last roadless forests. It is time to take the Forest Service to task by challenging the agency's logging and roadbuilding policies in roadless areas. Cove/Mallard is only the latest example of the eagerness of the Forest Service to accommodate the final solution the timber industry has crafted for remaining roadless areas. Speak out now and join the Cove/Mallard campaign; help us to ensure that this project will be the agencies Waterloo. It is time to stop the Forest Services assault on our wildlands. 🐾



A feller buncher stacking trees from the Noble Sale.

ALONG THE NOBLE ROAD

BY ANGIE HAMPTON

Wake up call at 10pm; temperature barely reading 0. This is when the trucks roll in. Three, four, five of them at a time drive up the treacherous road to load and carry away the corpses of two and three-hundred-year-old grandmother trees. We reluctantly pull our tired bodies out of warm sleeping bags and face the harsh reality of winter in the Northern Rockies.

We hold a vigil at the Noble Road gate, maintaining our presence there with fires, candles, and as many as four or five people. The trucks run all through the night on a loose schedule of approximately one per hour. We sit at the fire warming our tired souls, slipping into passive mode, and lulled by the silence of the big wild, drift off into sleep...when all of a sudden they emerge, thundering from the depths of darkness, taking with them the life of the forest and ripping away at our spirits as they go. We grab our candles and scurry to the gate. We stand strong

*we meet
their nervous comments
with voices
full of feeling and truth.*

nervous comments with voices full of feeling and truth.

Through the vigil, we open lines of communication and otherwise express our disgust to the drivers, the forest service officers, and the occasional county sheriff. If nothing else, we are there to bear witness to the destruction and show them that we are not just going to lie down and let them steal the life out of this land.

During the day we cross the frozen Noble Creek and climb up to the Noble Road. We silently recall the images of arrests, slow-down actions,



Dixie Summit activists.

against the intrusion of their headlights. As they get out to unlock and open the gate we meet their

satellite camps, basecamp, legal support people, and the high energy levels present and persistent in the summer of '93 when this road was built. Here we are again, a lot of the same faces, watching the trucks move in and out as quickly as possible.

We walk the six miles of road back into the units and experience first hand the advancing feller-bunchers. There, back in the (clear) cutting units, the ground is ripped up by the bulldozers, skidders, feller-bunchers, and processors. The soil, left to face the spring thaw, will eventually make its way into Little Mallard Creek or Noble Creek and then into the Salmon River. In pulling out our tape measures and floundering through six feet of snow to the creek banks, we find the Forest Service to be blatantly violating buffer regulations set by the National Marine Fisheries Service.

There's an enormous amount of energy already invested in this campaign. A lot of folks, whether from an office in the city or at Dixie Summit, are putting their whole lives into this struggle. For the sake of all that is wild and free, get out here to the Salmon River breaks! 🐾

By MICHELLE STEWART

In the past four years Cove/Mallard has seen a constantly evolving campaign. Sometimes it is hard to believe (or remember) how things all started.

The summer of 1992 had a good blend of both new and seasoned activists. In total there were less than a dozen of us; Nonetheless, we managed a six week campaign with eight arrests. Folks in Dixie, Grangeville, and Elk City stared when we arrived, but we were no more a threat to them than they were to us. Thinking back it is funny how much tolerance there was on both sides, and how little there is now.

That year's camp was located one mile from the Noble road (which was then only 4 miles long); Just a few miles away lay Grouse Road still surrounded by trees.

In 1993, the Ancient Forest Bus Brigade purchased land which became a central point for more than 500 activists. Law enforcement was overwhelmed with our numbers, both in the woods and in their jails. As we upped the ante, locals did the same. The carefree days of lunches in the Dixie diner were replaced with "No Earth First!ers" signs. Our unwillingness to let this area crumble wore on the nerves of people feeling threats to the only livelihood they had ever known.

That year, the Cove/Mallard campaign went national both in the media and in the eyes of industry. Over 200 charges were laid on activists in less than four months. It was the year that local law enforcement realized that the harder they pushed the deeper our feet anchored into the soil that we swore to defend.

In December of 1993, Judge Ryan finally granted a temporary injunction which halted all activities in the area. As the following months passed activists maintained a basecamp, ready for the injunction to be lifted; a quiet summer waiting in the Nez Perce National Forest for both activists and locals. January of 1995, saw us thrown back into the motions with the injunction lifted and trees again falling.



**ONLY YOU
CAN SAVE
COVE/MALLARD**

Many of the activists from 1992 and 1993 are still around and the anger is rising in us all. As each year passes, it becomes harder and harder to walk through places that are a scarred and ragged mess of the wilderness we saw only a few months previous.

The felony laws do not keep us away, and local hostility is only a small hurdle we have to jump over. It has been said from the beginning that this would be a six year campaign—words many of us took to heart.

In honor of the fisher, marten, wolverine and all that is wild, we dig in our fingers and try to hold on to Cove/Mallard. 🐾

BY DARRYL McECHT

Here in McCall, talk over last summer's fires and the inevitable logging bonanza is edged out only by irrational debate about wolves. Humans are not very skilled at identifying the enemy.

The Boise National Forest to the south has made no secrets and no apologies about its salvage manifesto. The Boise wants wood, not bull trout, and they want it in one fell swoop. Members of the public can be either for it or against it, but ne'er the twain shall meet.

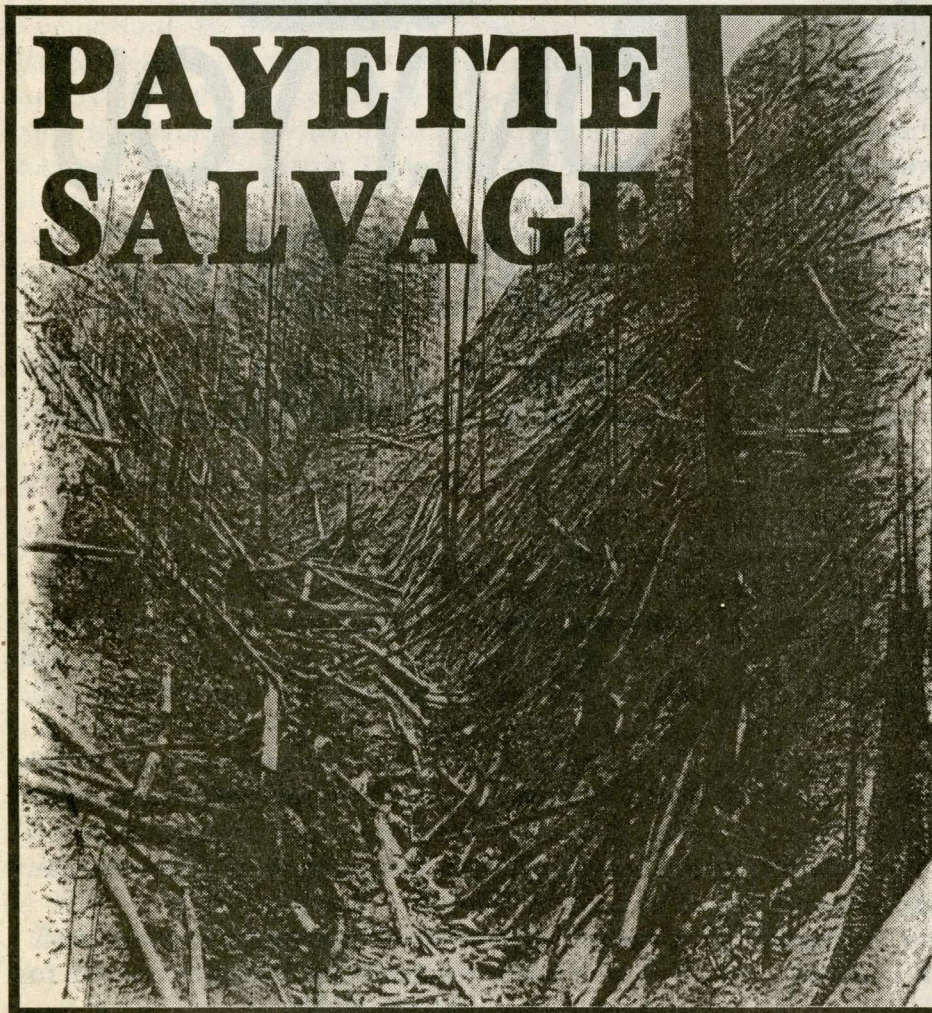
The Payette, headquartered in McCall, has opted for a more clandestine approach. Rather than owning up to the enormity of their salvage plans, they have subdivided the burn into four major salvage exploits and numerous smaller sales. In so doing, they attempt to de-emphasize their rampage. This means, surely, that the public can be for

some of it, against other parts, and largely ambivalent about the rest. The complexity of these multiple sales tends

*...each one
of these salvage sales
is significant,
each is criminal,
each is wholly
destructive
to forest ecosystems
and watersheds.*

to entangle the opposition in efforts at deciphering mounds of Forest Service documents, but we can be clear: each one of these salvage sales is significant, each is criminal, each is wholly destructive to forest ecosystems and

watersheds. And all of them must be fought tooth and nail.



From the largest fire—the Corral/Blackwell—emerge three hefty sales. **The Main Salmon River Postfire Project** translates into the swift obliteration of the French Creek/Patrick Butte Roadless Area, and a final blow to Carey Creek Roadless Area. **The Fall Creek Postfire Project** means entry into the vast Secesh Roadless Area, and **The North Fork Payette River Postfire Project** will join a 15 million board feet state timber sale to destroy the Payette River watershed.

Out of the Chicken fire, the Forest Service have pulled the Lower South Fork Salmon River Project, a horrendous assault on the Secesh and Cottontail Point/Pilot Peak Roadless Areas, a direct affront to the adjacent River of No Return Wilderness. The Forest Service wants you to believe these sales are designed to benefit salmon and bull trout, but only a fool could believe their logic.

continued on page 28

By GREG BROWN

Idaho is the only western state, and indeed, the only state outside of Alaska to continue all three of the most unfair and unsporting black bear hunting practices. For the hunting of black bears in the spring as well as baiting and dog tracking are practices that offend even the most conservative individual.

Idaho is one of only six states that permit spring bear hunting.

When a hunter shoots a lactating female, the cubs are orphaned and die from starvation or predation. While it is illegal to kill females with nursing cubs, it is difficult for a hunter to distinguish between male and female bears. Looking for cubs as an indication of sex is futile because female bears will often leave their cubs near the den while hunting for food. In fact, over 50 percent of Idaho's black bears are killed during the spring hunting season.

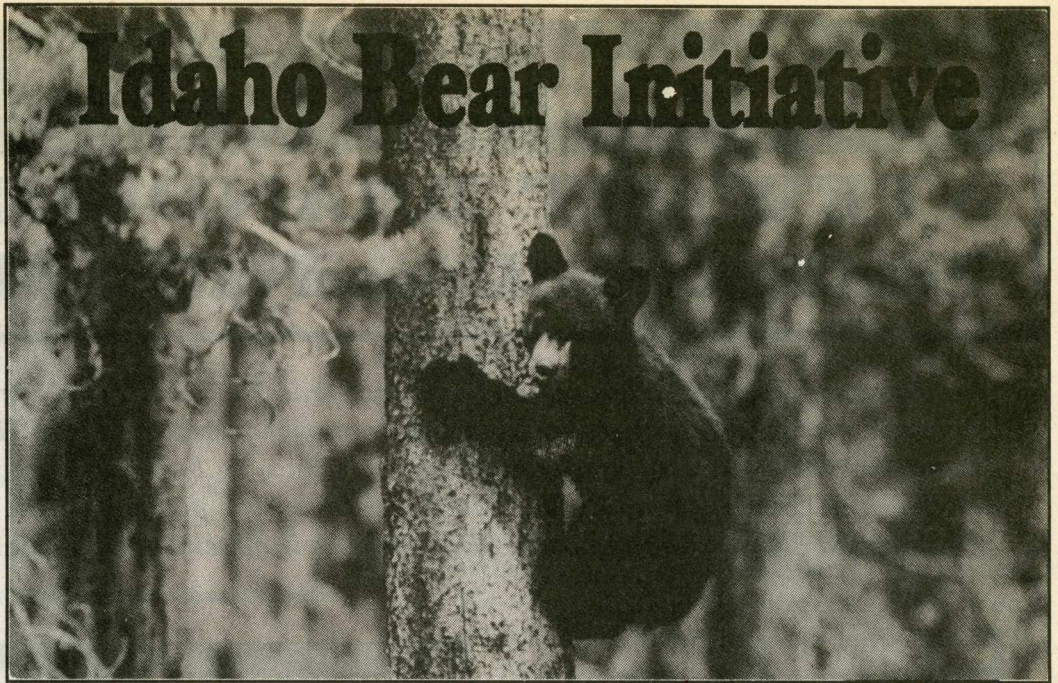
Baiting is the practice of luring and habituating a bear to a site with attractive and smelly foods.

When the bear visits the bait site during the hunting season, the bear is shot. Bear baiters kill more of Idaho's

black bears than traditional black bear hunters and those that hunt bears with dogs. Of the 28 states that allow black bear hunting, Idaho is one of ten that still allow bear baiting.

For hound hunting, hunters fit their dogs with radio telemetry collars. When the dogs pick up the

Idaho Bear Initiative



A small black bear cub "hiding" in a tree.

scent of a bear, they chase the bear until it is cornered or climbs up a tree. When the radio signal from the dogs' collars indicates a stationary location, the hunters follow the signal to the bear and shoot it at close range. Hunters that use dogs constitute only about 5 percent of black bear hunters and yet they kill about 20 percent of all black bears.

While hunting ethics and the idea of fair chase clearly do not apply to black bear hunting in Idaho, there is more to this story. The Idaho black bear population may be showing signs of stress. The Department of Fish and Game's data on the black bear indicates declining populations in regions of the state.

However, change is on the horizon. In 1992, the citizens of the state of Colorado passed black bear legislation that eliminated spring, hound, and bait-assisted black bear hunting. The margin of victory was an overwhelming 70 to 30 percent. Last year, the citizens of Oregon also passed an initiative prohibiting the use of bait and dogs in both bear and cougar hunting.

In Idaho, a 1992 public opinion poll sponsored by the Department of Fish and Game indicated that about 75 percent of Idahoans oppose black bear baiting, 67 percent oppose hunting with dogs, and 59 percent oppose a spring season hunt.

continued on page 26

*75% of Idahoans
oppose black bear baiting,
67 % oppose hunting with
dogs, and 59% oppose
a spring season hunt.*

INTERVIEW:

By DON SMITH

STEWART BRANDBORG Pioneer of the Conservation Movement

Montana is fortunate to have a long legacy of grassroots activism. Stewart Brandborg was working on wilderness preservation before most of us were born. His experiences range from Executive Director of the Wilderness Society to building the grassroots movement around the country. Brandy was instrumental in the passing of the Wilderness Act, the Endangered Species Act and other landmark environmental legislation.

Hearing the wisdom of the elders has been lost in our world. We have no cultural roots on which to rely, no rite of passage from which to grow. The experienced words of an elder can bring a sense of personal satisfaction. By listening to an elder, one may speak confidently words of wisdom to someone younger. Stewart Brandborg, or Brandy as he is often called, engenders this sense of self-confidence.

The first thing that comes across, in talking with him, is that this man knows what he's saying. It is based on experience, experience of the best kind. Personable, Brandy is above the presumptuous attitudes that so often get us in trouble. And he does it with a persuasive force, yet with humility that is almost as refreshing as the wind that blows off the Bitterroot range.

"Give away the credit for what you do," he says. It's an attitude that rejects self-seeking gratification. "Build trusting relationships with other people," he asserts; work from the premise that "we all have it within us to make a difference;" that we all can make an invaluable contribution to protecting the big wild for future generations—not only for people but for other species as well.

Threats to the Salmon/Selway ecosystem cannot be overstated. Steve Mealey, director of the Upper Columbian River Basin Ecosystem study (see page 12), has on his drawing board a plan that will



Three generations of Brandborgs at The Wilderness Act 25 year celebration last summer.

forever reshape the landscape of the Northern Rockies. For Brandy, it represents another "manipulative pattern of big government, fueled by poor science that violates proven biological principles, in which targets are set before the thing even starts." What's needed, he says, is "good science, in which scientists are free to produce results that haven't been predetermined by bureaucrats. And good managers in the Forest Service should be encouraged!" As if that weren't enough, Idaho Senator Larry Craig has introduced a bill (see page 20) that would, under the rubric of a forest health emergency, log the ecosystem back to health, waive

the right to appeal, and remove from consideration environmental laws designed to protect the viability of wildlife and of habitat.

Brandy embodies a spirit of optimism, while not shying away from the realities confronting us. As Brandy states,

"The democratic process affords us with some wonderful opportunities," and "what we do to mobilize others will be our real

*"local people know
what they want to do...
the national groups say,
'leave it to us.'
This just won't do."*

measure of success." He comes out strong with words that leaves one feeling motivated, with the sense that there is no better time to take action than right now. When Brandy says things like "The beginning and end of my life is with a love for wildlife and wilderness," one senses a truthfulness that we all can borrow from.

Brandborg, a fourth generation Montanan, worked for the National Wildlife Federation in the fifties. As the executive director of the Wilderness Society (1964-1976), he played a key role in seeing the Wilderness Act become law. He has also worked for the Department of the Interior, the Forest Service, and the National Park Service. His tenure at Interior ended when James Watt, Reagan's Secretary of the Interior, fired him. Brandborg is quoted as saying: "I opened the note [from Watt] and it read, essentially, 'Happy Birthday Mr. Brandborg, now clean out your desk, you're fired!'"

His career began at an early age, demonstrating a talent far exceeding his years. At age 22, he worked for the Montana Fish, Wildlife and Parks Department, where he studied the life history and ecology of mountain goats. The result: the most thorough account of mountain goats ever written. He has also, over the years, worked for a variety of public interest groups. Today he is an advisor for the Alliance for the Wild Rockies.

Both days I spoke with him he was between meetings, planning a move on the thugs who, if they have their way, will tear our forest to shreds. What he has learned from his time with the Wilderness Society holds a lesson for all of

us. The Wilderness Society of today, he says, has "breached the participatory process," falling into a pattern, as with other national conservation organizations, in which they think of themselves as "doing the bidding for those of us at the grassroots." They are staffed by "people who lack the emotional commitment and grassroots experience" to lead a national movement. "At the grassroots you'll find outstanding people giving their lives," he says, whose "only real payment comes in the form of thanks and encouragement."

What we need, he suggests, is a renewed respect and use of fundamental grassroots organizing principles to mobilize people. Our media work, appeals, litigation efforts, research, etc., are all needed he recognizes. The work needs to be complemented by on-the-ground mobilizing of people in the northern Rockies, "bringing them into our work, into our group meetings, getting them involved out in the field," without this we aren't likely to get very far. From Stewart's perspective, "the task of a social change movement

in a democratic society is to concentrate on helping people identify the issues and what needs to be done." Issues are the "grist of the mill," he asserts.

We need to be more psychologically perceptive, more able to understand how we function in groups. In the tradition of community organizing, motivation and motivating others is the key to successful organizing. To say that the national groups don't understand this is to say the obvious. The "local people know what they have to do," he says, "while the national groups say, 'leave it to us.' This just won't do."

This isn't to say that some logging, mining, and grazing is not acceptable, he is quick to remind me. But what "we're really doing is upholding the laws of the land." Nor can we, like the national groups, allow ourselves to be "captured by politicians, their aides, and corporations."

*The Wilderness
Society of today,
he says
has "breached the
participatory
process"*

continued on page 26

UPPER COLUMBIA RIVER BASIN PROJECT:

The Nasty Truth

BY JAMES BARNES

The Upper Columbia River Basin Project (UCRBP) Environmental Impact Statement (EIS) is the most ludicrous idea to come around the northern Rockies for some time. Closely connected to the Eastside Ecosystem Management Project (EEMP) which covers eastern Washington and Oregon, the UCRBP intends to prescribe an across-the-board management regime for the entire Columbia River watershed above Lewiston, Idaho. Affecting all Forest Service and Bureau of Land Management lands in the basin, this project will supercede Forest Plans and other local management schemes on forest and rangeland in Idaho, Montana, Nevada, Utah and Wyoming. Touted as "Ecosystem Management," it somehow manages to cut both the northern Continental Divide and the Greater Yellowstone Ecosystems in half to include only the parts west of the Continental Divide.

Allegedly, the project intends to identify threats to the ecosystem like fire and bugs, but excludes all extractive activities. It will then recommend giant salvage and thinning programs to make sure that neither fire nor bugs will ever find anything to consume in our forests again.

The project stated intension is to make sure that the needs of species and ecosystems are kept in careful balance with economic imperatives. In other words, no species or ecosystem will be allowed to cause the timber supply or public lands grazing to be diminished more than 25% from current levels. Base levels at which an ecosystem can be sustained have not been established. We only have till this fall to understand the intricacies of

all biological processes, their function and integration. So I guess there won't be any base levels.

According to UCRBP documents and the Western Forest Health Initiative all our forests' problems are the result of too little management. As project leader Steve Mealy puts it: "Current environmental awareness was built on the assumption that ecosystems are most at risk because of management.. Now the ecologists are telling us that the greatest risk is lack of management." (A massive search has been set up in order to find these alleged ecologists, but so far no luck.) Now those areas of public lands suffering the most from dangerously low levels of management are inventoried roadless areas and designated wilderness. However, according to top scientists employed by the Forest Service who have at least two years towards a degree in forestry or wildlife management from an accredited four-year college, the recommended prescription for these areas is more management. Specifically, "more management" will consist of logging and roadbuilding—more than you've ever seen in this bioregion. In addition, the Forest Service and industry are eagerly awaiting the passage of Senator Larry Craig's (R-ID) "Forest Health" bill (see page 20), which would give timber further carte blanche in the region.

As for wilderness, which you might have thought safe from such depredations, here's what Mealy has to say: "Management is needed to prevent the catastrophic collapse of entire systems, especially in wilderness."

Statements like these are obvious attempts to lay the groundwork for revision of the Wilderness Act, and don't think they won't try. Can I have some whiskey now?

Meanwhile, the UCRB Project is going to turn the entire 26,000 square mile upper Columbia River watershed into a handful of forest and range types, each with a prescribed and inflexible series of options, standards and guidelines. For instance, for "warm, dry forests (high fire incidence)," the plan mandates open park-like stands of ponderosa pine etc., with 5-30 overstory trees per acre and a stand density of 50-100 square feet per acre. And that's it, whether you're talking the Salmon/Selway, northern Continental

*Necessary use or
tolerance of fire-
none.*

*Limits to logging-
none.*

Divide or Greater Yellowstone Ecosystems. It doesn't matter; they're all the same.

However, unlike the above prescriptive language, the proposal is much more vague about "restoration" methods. Fire is allowed "when and where conditions are favorable," but "alternate methods to fire (i.e., mechanical)" may be used. Translation? Necessary use or tolerance of fire—none. Limits to logging—none. Mealy says that our "forests have converted from pine to fir, from open park-like stands to dense thickets." Well heck; the Forest Service simply intends to log off the latter and somehow produce the former.

The Forest Service has been looking at an incredibly complex set of ecological conditions in an area that ranges over tens of thousands of square miles, and whose ecosystems are affected by a myriad of natural and anthropogenic influences. Amazingly, they then reduce all its problems (real or conveniently imagined) to one: lack of logging. And the solution, of course, is equally simple: log more.

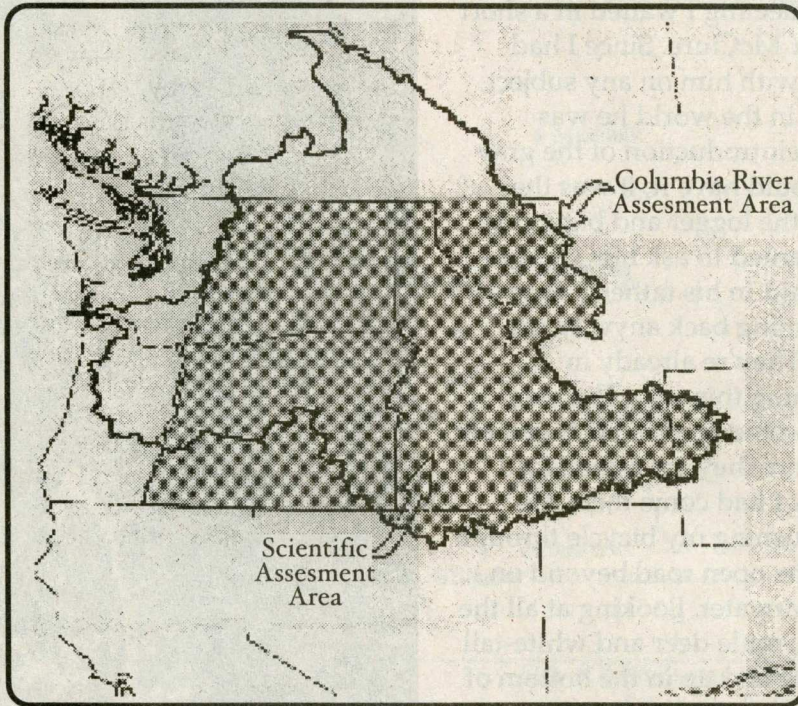
Forest Service ecology: it's easy, it's fun, and above all—it's profitable.

Steve Mealy says that "many in the environmental community are mortified that in the name of ecosystem management we will manage more, not less." Well, you sure are right we are mortified; not only that but we're disgusted, shocked, nauseated and appalled. For years scientists and activists have warned that industrial development and extraction practices were damaging the land and waters. Faced with overwhelming evidence, what does the Forest Service do? If the UCRBP EIS is any example, the agency is pursuing a policy of willful and rigorous ignorance. Perhaps at one time activists thought that by

insisting that science mediate the political and cultural struggle over the environment, we had a chance to prevail when science, privileged as it is by western society, proved our claims. Clearly we were wrong.

Ecosystem management was supposed to be all about science, but look what it's become—another tool for extractive interests to bludgeon their way through public process and law to the resources they crave. We told the agencies that they had to look beyond artificial boundaries, that they needed to look at natural communities of living things and geological forms, that parks and wildernesses were inadequate to

preserve biological diversity. So they used this idea to overturn environmental law and policy and justify a blanket increase in logging across the northern Rockies. Informed by science, we told the agencies that fire suppression was a bad idea, that it would alter species composition and make resultant fires wilder and more dangerous. We meant, when we said this, that they should abandon fire suppression as a policy, and perhaps concentrate only on protecting lives and property. But they have run off with



The Upper Columbia River Basin Project Area

the idea and now threaten remaining intact ecosystems with timber cutting on an unprecedented scale—as an alternative to fire. The truth is, the fight over the environment has never been about science, and it isn't now. It's about politics, fear and greed.

Steve Mealy asserts that "We are challenging the underlying assumption of the whole environmental movement." Yeah, Steve, I guess you are. You and your friends in government and industry are the enemies of our assumption: that life is good, the earth is rich, and that all living things have a place in this world—in contrast to being ground into pulp and made into dollars. 🐾

Steve Mealy's quotes were taken from the Missoulian, 2/12/95.

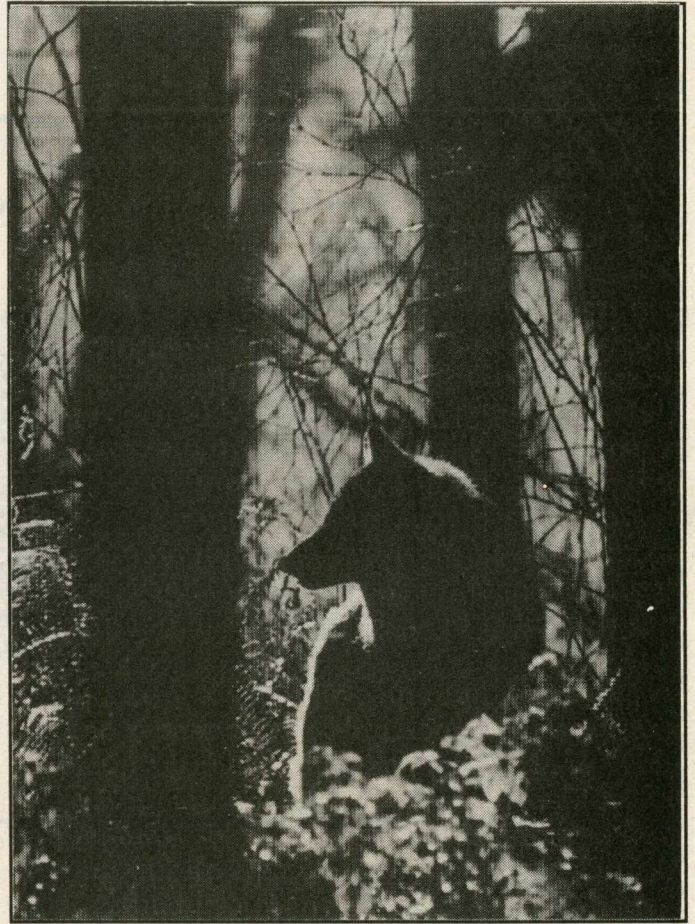
IDAHO GRAY WOLF REINTRODUCTION

A GOOD IDEA ... GONE ASTRAY

BY STEVE PAULSON

In 1989 I attended a "wise-use" meeting of the Clearwater Resource Coalition at which then-senators Jim McClure and Steve Simms were to speak. After the meeting I waited in a short line to speak with Senator McClure. Since I had never been in agreement with him on any subject, I wanted to ask him why in the world he was publicly advocating the reintroduction of the gray wolf to Idaho. As luck would have it, it was the exact same question that the logger and big-game-outfitter in front of me wanted to ask him. He gave the outfitter a sigh, and said in his fatherly tone of voice, "Shorty, they're coming back anyway, no matter what you or I do. They're already in Montana and they're coming this way. The only hope you've got is to get some kind of management control on them now, before they get established." I left having learned what I had come there for.

Two years later I was pushing my bicycle through receding snow slides to the open road beyond on the North Fork of the Clearwater. Looking at all the winter-kills of elk, moose, mule deer and white-tail that the harsh winter had piled up in the bottom of the canyon I thought it was a good year to be a predator. With a little experience, you can look at a kill and name the predator in only a few seconds. Each predator leaves the kill-site in very characteristic patterns. For example, a coyote pack will almost always skin the hide off in one or two pieces and lay it out on the snow beside the kill. They'll eat the flesh off the carcass and leave the skeleton fairly intact. A black bear will almost always drag the kill to some sheltering brush or small trees before he/she eats in hiding and then returns to the kill daily until it is no longer useful. A wolf enjoys chewing up and swallowing large, dense, marrow-filled bones. When a wolf, especially a pack, is through with a kill, there isn't much left except a pile of hair and a chewed-up vertebral column with tibias and fibulas scattered around. The scat then contains



Gray wolf.

large fragments of dense bone.

That spring I found a place where some wolves had killed two yearling elk and a mature cow elk within a quarter mile of a large snow-slide. From old bones collected from the site, it appeared that elk had died at that spot for several years preceding. I collected scat from this sight and had it analyzed by the wildlife department at the University of Idaho who decided that it was "...consistent with all information which suggests wolf scats..." I estimated that there were at least four wolves and theorized that the elk were

attacked and mortally injured while crossing the slide, possibly all within a short period of time in late January. I spent eleven weeks on the trail that year and discovered several other "signs" of wolves, although nothing else that would suggest a pack.

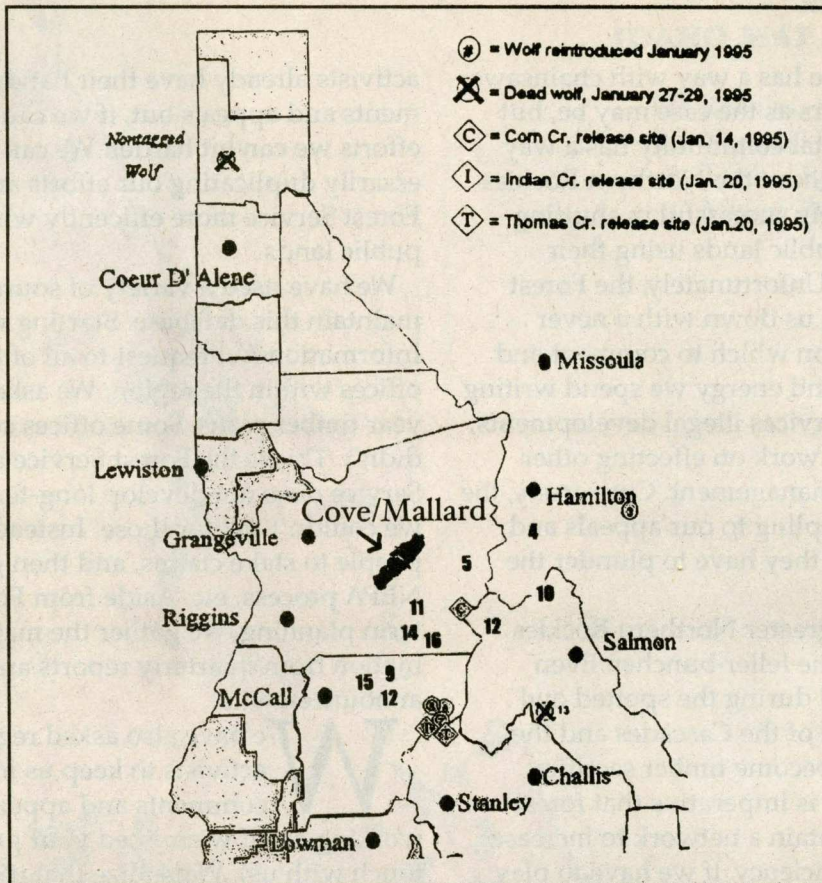
In the winter of '93-94 I organized a search for wolf signs, hoping to find something as significant as the three wolf-kills of '91. Twenty-two volunteers in small groups over three-and-a-half months covered 500 miles of trail. We found that the wolf pack of '91 was no longer killing elk on the North Fork. We did document one sighting, several howling episodes, and literally a bucket full of scat. By crisscrossing the areas of interest, we were able to get an idea of the territories

of three lone wolves. I'm fairly confident that this effort represents valuable research into the understanding of wolves in Idaho prior to the reintroduction with implications for post-reintroduction era wolves.

Now comes the US Fish and Wildlife Service with ex-Senator McClure's plan. The Gray Wolf Environmental Impact Statement (EIS) proposed reintroducing Canadian wolves into Yellowstone National Park and the Greater Salmon-Selway wilderness, but the American Farm Bureau filed suit against the reintroduction and obtained a last minute injunction which delayed the Fish & Wildlife Service for over a week. After the injunction was lifted, four wolves were prepared for release. When

the weather wouldn't clear enough to fly the animals into the wilderness, the Fish & Wildlife Service made the decision to release the wolves from a road. These four wolves had been kept in small cages that fit into the back of a pickup-truck for an undisclosed amount of time. When they were

finally released, many people were on hand to slap each other on the back in congratulations for their successful effort. The disorientated wolves dispersed widely and rapidly. Soon afterward, the Fish & Wildlife Service released 11 other trapped Canadian wolves into the Greater Salmon/Selway ecosystem. As of this writing, two reintroduced wolves appear to be heading back home to Canada. One is traveling north on the Idaho side of the Bitterroot mountains; the other is going up the Montana side.



A Fish & Wildlife map showing the released wolves positions as of February 9, 1995.

From the moment these wolves were released, all wolves in Idaho and Montana south of Interstate 90 and throughout Wyoming lost their protection under the Endangered Species Act. Since that time, two wolves have been killed. One was a radio-collared Canadian female wolf called B13, who was found feeding on a rancher's calf near Salmon, Idaho. No evidence has been turned in proving she killed this calf or any cow. The other wolf was a naturally occurring male who had been sighted running with another wolf. He was killed near the Canadian border at Priest Lake, by a poison called 'M-44'—baited cyanide that explodes into the mouth and down the throat.

The Gray Wolf Committee, the Predator Project, *continued on page 27*

GIS: Mapping a defense for biodiversity

BY BETHANIE WALDER

The Forest Service has a way with chainsaws, or feller-bunchers as the case may be, but the environmental community has a way with computers. Throughout the Northern Rockies activists have been largely successful in shutting down timber sales on public lands using their keyboards and screens. Unfortunately, the Forest Service continues to bog us down with a never ending barrage of sales on which to comment and appeal. The more time and energy we spend writing appeals on the Forest Services illegal developments, the less time we have to work on effecting other changes in public land management. Conversely, the more time they spend replying to our appeals and comments, the less time they have to plunder the forests.

Roadless areas in the greater Northern Rockies area are coming under the feller-buncher. Even though we were warned during the spotted owl controversy, the eastside of the Cascades and the Northern Rockies have become timber sacrifice zones. Because of this, it is imperative that forest activists create and maintain a network to increase our effectiveness and efficiency. If we have to play their game, at least we can play it well.

The Idaho map on the following page depicts timber and mining projects proposed or active on roadless lands within four national forests in Idaho. This map is part of a larger database and Geographical Information Systems (GIS) map that tracks incursions on all roadless lands proposed for inclusion within the Northern Rockies Ecosystem Protection Act (For more on NREPA see page 21). As the roadless part of the project reaches completion, we will be expanding to include all development and extractive projects within Forest Service, Bureau of Land Management and state lands in this bioregion.

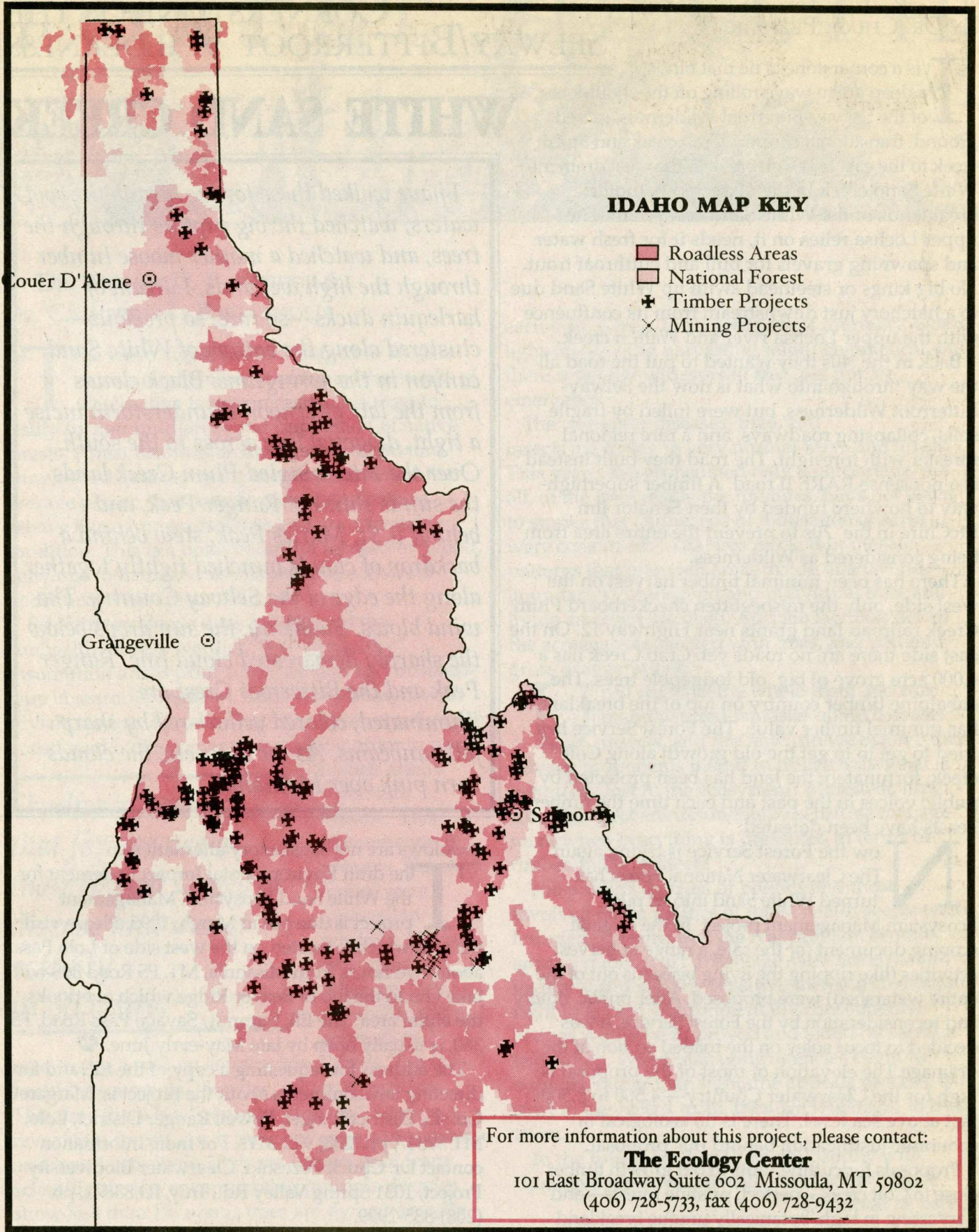
We want to create an active database of all current and upcoming developments on public lands, so we can be sure that none of these projects slip through the cracks. Clearly, forest watch

activists already have their hands full with comments and appeals but, if we can coordinate our efforts we can hit harder. We can keep from unnecessarily duplicating our efforts and watchdog the Forest Service more efficiently while protecting more public lands.

We have used a variety of sources to create and maintain this database. Starting with a Freedom of Information Act request to all of the Forest Service offices within the region. We asked for five to ten year timber plans. Some offices complied, others didn't. This is the Forest Service after all. The Forest Service does not develop long-term mining plans so we couldn't ask for those. Instead, they wait for people to stake claims, and then go through the NEPA process, etc. Aside from Forest Service long-term planning, we gather the majority of our information from quarterly reports and periodic sale announcements.

We have also asked regional forest watch activists to keep us informed about the comments and appeals they are working on (if we missed your group, please get in touch with us). We realize that it's extra work to keep another environmental group informed about the projects you are working on, but it can help us avoid duplicating and missing projects. Most of the work is already pretty evenly divided, and a general understanding exists regarding which activists work on which forests. Hopefully, this project can act as more than a coordination tool.

The database backs up a GIS map similar to the one pictured here. Maps can be printed out for individual forests or for regions. Each cross represents a timber sale, while each 'X' represents a mining project. Since most of the general public doesn't realize the daily threats that roadless areas are facing, these maps can be used as excellent education and outreach tools. Additionally, if your organization is seeking congressional protection for a specific area, these maps can act as a great visual aid during political hearings 🐾



BY DR. CHUCK PEZESHKI

CORNERSTONE OF THE SELWAY/BITTERROOT WILDERNESS

WHITE SAND CREEK

It is a cornerstone; a tie that binds, a deep green wave rolling off the shoulders of the Selway-Bitterroot Wilderness, sacred ground, transitional country. Crab creek and Storm creek to the east and Colt creek to the west drain into White Sand creek in the dissected Batholith breaklands of the White Sand ecosystem. The upper Lochsa relies on it, needs it for fresh water and spawning gravels for bull and cutthroat trout. No big kings or steelhead swim up White Sand due to a hatchery just downstream from its confluence with the upper Lochsa river and Walton creek.

Back in the '40s they wanted to put the road all the way through into what is now the Selway-Bitterroot Wilderness, but were foiled by fragile soils, collapsing roadways, and a rare regional forester with foresight. The road they built instead is a nonsense RARE II road. A timber superhighway to nowhere funded by then-Senator Jim McClure in the '70s to prevent the entire area from being considered as Wilderness.

There has been minimal timber harvest on the west side, only the misbegotten checkerboard Plum Creek railroad land grants near Highway 12. On the east side there are no roads yet. Crab Creek has a 4,000 acre grove of big, old lodgepole trees. The subalpine timber country on top of the breaklands has minimal timber value. The Forest Service has tried to get in to get the old growth along Colt creek; fortunately the land has been protected by public voices in the past and each time the timber beasts have been defeated.

Now the Forest Service is trying again. The Clearwater National Forest has turned White Sand into its pilot Ecosystem Management project. In the original scoping document for the sale, a range of harvest activities (like ripping the living bejeezus out of the entire watershed) were proposed. After public outcry and reconsideration by the Forest Service, it was decided to focus solely on the roaded section of the drainage. The elevation of most of the proposal is high for the Clearwater Country—4,500 to 5,500 feet above sea level. There is no ecological or economic justification behind this proposal.

Proposals for cutting units in old growth timber close to Colt creek—perfect, pristine forests—and harvesting in high, botanically unique breakland

I have walked these forests, drank the cool waters, watched the big raptors through the trees, and watched a mother moose lumber through the high wetlands. I dream of harlequin ducks—so rare, so precious—clustered along the bottom of White Sand canyon in the springtime. Black clouds from the late afternoon thunderstorm incise a tight, diagonal line across to the south. Over the intermingled Plum Creek lands the sun is shining. Ranger Peak, and behind it St. Maries Peak, stew behind a backdrop of clouds bunched tightly together along the edge of the Selway Country. The wind blows. Suddenly, the sun drops below the sharply demarcated cloud line. Ranger Peak and the Bitterroot Crest are illuminated, colored yellow-red by sharp fall sunbeams. As the sun sets, the clouds turn pink over Montana.

meadows are not satisfactory alternatives.

The draft Environmental Impact Statement for the White Sand Ecosystem Management project is due out in March, 1995. Please visit the area which is located on the west side of Lolo Pass about two hours from Missoula, MT. FS Road 368 will take you to the top of Beaver Ridge which overlooks the entire area. The Elk Summit/Savage Pass Road, FS 360, is usually open by late May-early June. 🐾

The address for requesting a copy of the EIS and for directing any comments about the project is: Margaret Gorski, District Ranger, Powell Ranger District, Lolo, MT 59847, ph (208) 942-3113. For more information contact Dr. Chuck Pezeshki, Clearwater Biodiversity Project, 1031 Spring Valley Rd., Troy, ID 83871, ph (208)-835-2999.

FOREST HEALTH

SILVICULTURE FOR SILVICULTURE?

BY DR. ARTHUR D. PARTRIDGE &
DR. CATHERINE L. BERTAGNOLLI

The term "forest health," coined in 1930, is now a euphemism to cover up the results of destructive forest practices. It is used to justify further mutilation and conversion of native forests. Forest health is an ambiguous catchword phrase used anthropomorphically to convince the average person that complex forest ecosystems behave like a human sickness and are a treatable condition. This is a bold distortion focused on wood, oblivious to damaged water, wildlife, soils, and understory vegetation.

Scientific evidence does not support the "unhealthy forest" verdict. The "unhealthy" assumption arises from aerial surveys and business-type inventories made by temporary laborers with trivial training. Aerial inventories have recently been questioned by the general accounting office in press

Studies reveal that forests are at their lowest levels of disease and insect activity in 30 years.

reports about "phantom forests." This phenomenon is not new. Phantom forests were reported in northern Idaho four years ago when on-the-ground surveys contradicted inventories based on aerial scans. Recent "forest health" documents, likewise, report apparitions. This time there is a "phantom disease." Studies reveal that forests are at their lowest levels of disease and insect activity in 30 years. Information from scientific studies encompassing multiple decades show less than 1% of our trees are dying naturally

each year. Given, there are spots of mortality, where light-on-the-land harvesting might be practical, but there is neither widespread tree loss nor an emergency.

The tree-killer diseases, fires, and insects are acting in very normal ways and levels. This year's fires consumed only a percentage, not all, of the trees inside the fire lines. Let's not listen to stories that "hundreds of thousands of acres were consumed." The fires worked in mosaic patterns that often left areas inside official "fire boundaries" untouched and individual trees still living amongst the dead. Add the fact that not all the acreage was stocked with trees, and you find gross exaggerations.

Until we have the whole truth and not manufactured fantasies about disease, insects, and fire how can we believe that salvage proponents intend to utilize only what is genuinely lost to the ecosystem? Moreover, how can we expect environmentally sensitive management when everything is presented in terms of timber and boardfeet?

The public's distrust of politics and those involved in the politics of forest health seems well founded. It seems that the real problem centers around public trust. If salvage sales are environmentally and socially sensitive then our democratic right to appeal environmentally consequential actions would be improved and aided by salvage legislation. When managing agencies begin to support, rather than fight, the appeals process, and start to use naked truth, then we will begin to trust them.

In the future, we hope this philosophy will dominate what we will call "forest care" rather

Continued on page 29

CRAIG'S WILDERNESS BILL

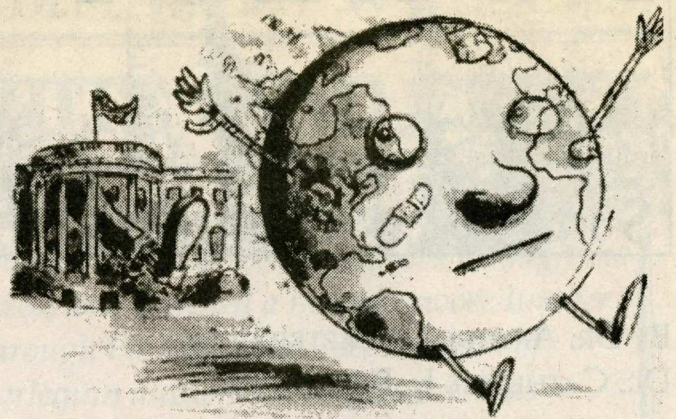
BY DARRYL McECHT

For those of us who feared what the freshman class of right wingnut congresspeople could conjure up in the 104th session, our fears have been usurped. We forgot to worry about the old-timers.

Idaho Republican Senator Larry Craig, who is anchored in Lewiston—barely a mile downwind from the infamous Potlatch paper and pulp mill, has eyed the present congress as the perfect audience for the Wise Use agenda. On February 9, Craig, backed by Washington's Slade Gordon, introduced Senate Bill(SB) 391 the "Forest Health Bill." This bill is a timber barron's dream. It undermines the authority of the National Forest Management Act and the Endangered Species Act, as well as other environmental legislation. Its aim is twofold: first, to expedite salvage exploits in areas burned in the 1994 fires; second, to sanction widespread logging on Forest Service and Bureau of Land Management lands beyond legal constraints.

The effects of the bill are easy to calculate; areas affected by fires, even minimally, will be available for wholesale harvest. Forests with 50 percent or more dead or "dying" trees will be designated as "health emergencies," and forests declared to suffer from "a substantial risk of insect disease or fire problems" will be deemed "high risk" areas. Forests classified under "emergency" status will be subject only to Environmental Assessments and are not appealable. Forests in the blanket "high risk" category can be appealed, but only WITHIN 15 DAYS!

Though citizens' rights to challenge public land management decisions have been stomped out, our right to request logging operations has been stepped up. This atrocious work of Congress includes a provision where citizens may petition to have an area over 100 acres classified under one of



the two emergency designations. It is no great mystery who will assume this responsibility, and surely they will venture forward with zeal.

For the Forest Service, this bill offers a reprieve. It means planning will be much less complicated and time consuming. It means less, if any, attention to such frivolities such as habitats, viable populations, stable soils, and clean waters. It means they can once again pull an old aerial photograph from a dusty filing cabinet and say, "Yep, thar looks like a place we outta log." And it means fewer nasty appeals to thwart their attempts. National Environmental Protection Act documents such as the Boise River Wildfire Recovery Project Draft Environmental Impact Statement, which completely fails to comply with current legal and procedural standards, reveal the agency's optimism that new legislation will obliterate the burden of existing laws.

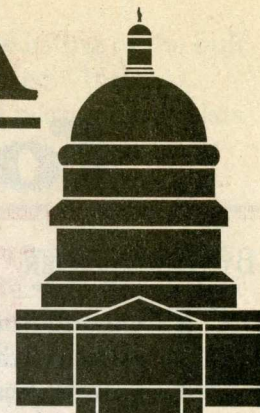
Passage of the Forest Health Bill is a direct affront to the Endangered Species Act. Consultation periods are chopped in half, down to 45 days. The bill endorses a slipshod approach to protecting listed species and blatantly implies that the economic value of timber superexistence of flora and fauna shoved to the brink of extinction. Our government's already skewed sense of priorities is about to take a turn for worse.

The Forest Health Bill will lead to the imminent demise of previously unroaded wild lands. The areas most susceptible to fire are those areas that have not been logged. Lands where the forest floor is plush with downed wood, where scraggly understories give way to "decadent" trees—where

Continued on page 31

BY DAN FUNCH

NREPA



Conservationists are fortunate to have a

legislative tool like the 1964 Wilderness Act to protect our threatened wildlands. Unfortunately, the wilderness system has failed to protect biological diversity, in part because of our approach to wilderness designation. Most areas in the system are at higher elevations, chosen for their scenic and recreational attributes, not biological value. Diverse habitat types are poorly represented, and important concepts like biological linkage corridors are neglected. The results can be seen in alarming declines in water quality and fisheries, habitat fragmentation, and endangered species listings.

The Northern Rockies Ecosystem Protection Act (NREPA) represents a new approach to this problem, one which incorporates conservation biology and challenges our traditional view of "political reality."

Scientifically based, NREPA incorporates concepts such as species viability, connectivity, and reserve system design. It

protects and restores habitat to ensure the long term health of diverse forest ecosystems. NREPA also recognizes

the importance of wildlands to our economy, and it creates new jobs in wildland restoration. Politically viable, NREPA gives us a means to end the stalemate that blocks wilderness protection in the Northern Rockies. The regional approach recognizes that ecosystems transcend state boundaries, and it complements the good work of grassroots activists with the voice of the American public.

The bill protects large blocks of federal roadless land as Wilderness—over 16 million acres region-wide—and links these blocks with biological connecting corridors. In the corridors, development is limited but not prohibited. NREPA also protects

Ready for the 104th Congress

1500 miles of Wild and Scenic Rivers, and directs two National Park and Preserve studies. It protects Native American cultural resources and access to traditional sites. It also sets up a scientific panel to monitor our progress at ecosystem protection.

Breaking new ground in conservation legislation, NREPA establishes a system of Wildland Recovery Areas. Many areas have been damaged by poor land management practices, and suffer from soil erosion, excessive road densities, and loss of secure wildlife habitat. Through an ambitious program of recovery and restoration we can create thousands of new jobs repairing these lands and restoring the health of our public forests.

NREPA is supported by over 600 organizations and businesses—from hunting clubs to humane society chapters, property owners to main street businesses, from grassroots activists to national organizations like Greenpeace and the Sierra Club. It was first introduced in Congress in September, 1992, and reintroduced in July, 1993. By the end of 1994 it had attracted 64 co-sponsors in the House of Representatives and was the subject of hearings in the Natural Resources, Merchant Marine and Fisheries, and Agriculture Committees. In early 1995, Representative Carolyn Maloney (D-NY), along with twenty other original co-sponsors, reintroduced the bill, now called HR 852. It presently awaits new committee hearings.

"These lands belong to all Americans. I'm proud to be doing my part to protect the best of what's left of our uniquely American wilderness heritage," said Representative Maloney. "Instead of defining boundaries as arbitrary state lines, we seek to protect this wilderness according to ecosystems, based upon the advice of the leading biologists,

continued on page 30

*NREPA gives us
a means to end
the stalemate that blocks
wilderness protection
in the Northern Rockies.*

The Battle for the Bull Trout

By MIKE BADER

The bull trout is one of the largest fish in the northwest; on average individuals grow to five pounds in size. Bull trout larger than twenty pounds are not uncommon and the record is a 33 pounder from Idaho's Lake Pend Oreille. Bull trout are also known for their tremendous spawning journeys of up to 150 miles. Bull trout depend upon very clean, cold water and are, therefore, a primary indicator of the health of forest ecosystems and watersheds. Extremely sensitive to human-caused changes to their environment, bull trout are indicators of our own quality of life.

Historical accounts tell of thousands of spawning trout in virtually every mountain stream. Bull trout have also played a significant role in Native American culture. Despite this rich legacy, native trout are now gone from much of their range and the last strongholds are now threatened. In the lower 48 states they are found in western Montana, Idaho, Washington, Oregon, and a small portion of northern Nevada.

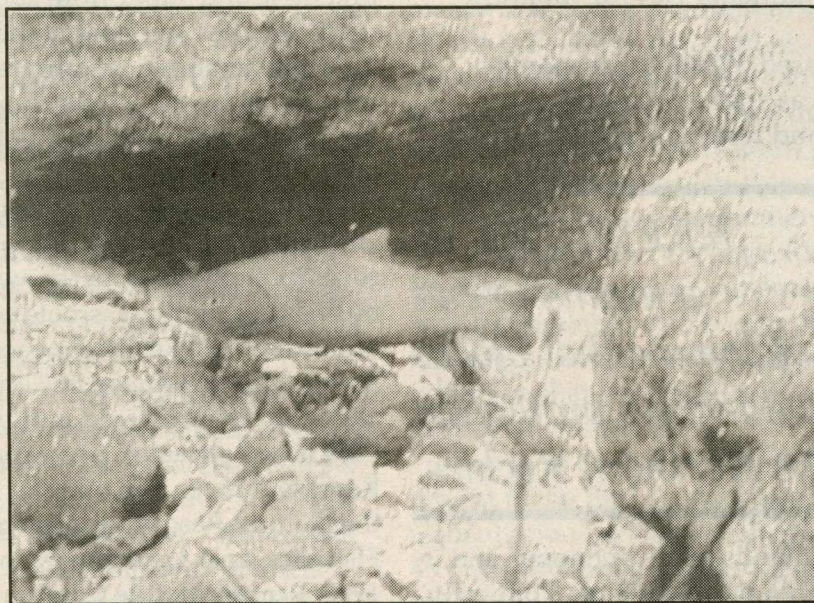
The bull trout has four distinct life history patterns. Most common is the inland migratory strategy. Adfluvial bull trout grow to adulthood in lakes and migrate to clear mountain streams for spawning. Fluvial bull trout follow the same pattern only they grow large in rivers. Resident bull trout spend their entire lives in the same river or lake. A small percentage of bull trout are anadromous (found only near Puget Sound) growing large in ocean

waters and spawning upriver. Spawning maturity occurs at four to six years. Unlike salmon, spawning adults survive to spawn again every two or three years.

There are numerous threats to the bull trout's continued existence. These include logging, roadbuilding, mining, poaching, grazing and water diversions, dams, competition from introduced fish species, legal fisheries, drought, global warming, and homesite subdivision. Of these, logging and roadbuilding are the chief threats to bull trout.

Since they are so sensitive to stream sedimentation,

there is a high correlation between remaining bull trout populations and roadless areas. Sediments fill in spawning areas and smother eggs. Logging removes overhanging vegetation and shade necessary for keeping stream temperatures low and logging also removes woody debris which



A Montana bull trout enjoys a clean, clear stream.

creates pool habitat. Mining poisons prime waters with toxic mine tailings and cyanide. Grazing reduces streamside vegetation, can collapse trampled banks and streambeds, and increases sedimentation. Water diversions for agriculture dry up streams.

Poachers have inflicted a heavy toll and enforcement has been low. In response to ongoing declines in its population and distribution, the Forest Service listed the bull trout as a

sensitive species in 1983, meaning the bull trout might be eligible for protection under the Endangered Species Act. However, the agencies responsible for management of bull trout habitat have done virtually nothing to protect it.

According to the Montana Department of Fish, Wildlife & Parks, bull trout are at risk of extinction in 98% of their remaining range in Montana. The US Fish and Wildlife Service status review found that highly migratory populations have been eliminated from the largest, most productive river systems. For populations for which status could be determined, 60% are declining. Extinction risks rise sharply when population sizes drop below 1,000 to 2,000 individuals or 500 spawning pairs. There are few populations left of even this size. Compounding the risk is habitat destruction. According to the Forest Service, only 18% of all bull trout populations and stream segments range-wide are not threatened by degraded habitat conditions. Bull trout have been exterminated from California and have been wiped out of more than 50% of their range in the lower 48 states.

In early 1990, the Alliance for the Wild Rockies, joined by Friends of the Wild Swan and Swan View Coalition, began extensive research into the status of bull trout populations and the threats to their existence. Two years later the three groups filed a formal petition with the US Fish and Wildlife Service to list the bull trout under the Endangered Species Act (ESA). When the agency failed to respond to the petition within the one year required by the ESA, the groups filed suit in Washington, DC to force a ruling on the petition. In a stipulated court settlement the Fish and Wildlife Service agreed to issue a decision by June of 1994.

The official status review showed bull trout highly threatened with extinction. The Fish and Wildlife Service report summarized by stating: "Virtually every bull trout population within the conterminous United States is threatened by a wide variety of land and water management practices." However, top brass in the Fish and Wildlife Service ignored the recommendations of

their biologists and ruled that the listing of the bull trout was "warranted but precluded." Internal documents show that the review team of biologists recommended a priority listing of "2," signifying high and imminent threats to the continued existence of the bull trout.

Succumbing to intense political pressure from elected officials and extractive industries, the Washington office assigned the bull trout a priority listing of "9" which signifies low and moderate threats. A long paper trail of memos from western governors and the Forest Service reveal that intense pressure has been and continues to be applied to derail a listing. Leading the charge has been Montana Governor Marc

Racicot, former Idaho governor Cecil Andrus, and current Idaho governor Phil Batt. They fear the consequences of a bull trout recovery plan. Bull trout protection would spell an end to massive plans for salvage logging and other roadless area invasions including Cove/Mallard.

Industry and the Clinton Administration have long had their sights set on the 20 million acres of unprotected roadless country in the northern Rockies—the heart of bull trout country. Meanwhile, state-initiated recovery efforts for Montana and Idaho have floundered. Designed to prevent listing of the bull trout, they failed to address the critical issue of habitat protection. Key documents admit this failure yet efforts to derail listing continue unabated at the highest levels of government.

continued on page 30

*"Virtually every
bull trout population
... is threatened
by a wide variety of
land and water
management practices."*

WHAT YOU CAN DO

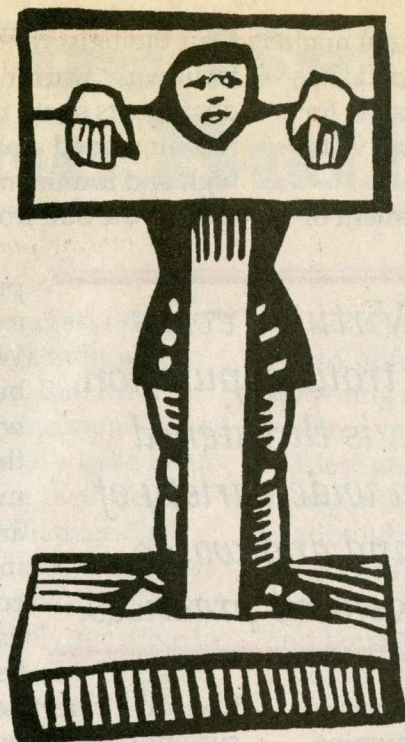
Write Mollie Beattie, Director, US Fish and Wildlife Service, 1849 C St. N.W. Washington, DC 20240. Tell her to reverse the Fish and Wildlife Service ruling and immediately list bull trout under the Endangered Species Act. Tell her to designate critical habitat for bull trout on all public lands.

Legal Update

BY WAYNE PRICE, J.D.

On the legal front, the good fight continues. Several federal actions have been taken since the last issue of the *Defender* that involve settling charges originally brought on activists in 1993. Some of these charges were basic closure order violations, some were for the infamous "Gate Six." These charges are finally being handled by federal attorneys as they should have been—as minor infractions. Our old nemesis, Ron Hoen, is no longer handling criminal prosecutions and has moved on to civil prosecutions, so the bulk of the prosecutions against Cove/Mallard activists are being handled by Assistant U.S. Attorney Barry McHugh. He appears to be a conscientious prosecutor, but doesn't view putting activist in jail as his "search for the Holy Grail." That doesn't mean he is an environmental activist; it only means that he sees minor political protests as what they are: minor infractions.

As to the "SLAPP," defense discovery moves forward slowly. At the end of March, Don Blewett of Highland Enterprises and Barry Clausen, self confessed Earth First! infiltrator and mouthpiece of the wise use movement will be deposed. A new trial date has been set for January, 1996 and depositions of the defendants is expected to continue. Since there is an ongoing federal law enforcement investigation, and since anything that any of the defendants in the SLAPP testify to in depositions can be used



by the federal and state government for criminal prosecutions, the only choice that the defendants have is to exercise their Constitutional rights under the Fifth Amendment and refuse to testify. This doesn't mean that the defendants don't have to show up for their scheduled depositions (whenever that may be). It simply means that when counsel for Highland Enterprises asks questions in the deposition, the safe answer is "I decline to answer and exercise the rights afforded to me by the Fifth Amendment to the Constitution of the United States, the Constitution of the State of Idaho and the United States Supreme Court in it's holding in

Lefkowitz v. Turley which stated that the fifth ammendment "not only protects the individual

continued on the next page



Tom Fullum is led off the Noble road.

against himself/herself in criminal prosecution but also privileges him/her not to answer official questions put to him/her in any other proceeding, civil or criminal, formal or informal, where the answers might incriminate him/her in future proceedings." This prevents the defendants from giving any information that could be used in current federal investigations or in any state investigations.

As you all should know by now the first test case that challenges the constitutionality of Idaho's new "Earth First!" law, making it a felony to engage in "solicitation to halt or impede lawful forest practices" has begun. On February 8th at Cove/Mallard, Mike Roselle and Tom Fullum were both arrested and charged with obstructing a road and solicitation to halt or impede lawful forest practices. They were released on bail pending a trial in Grangeville. At the preliminary hearing on February 27, all charges were dropped when Judge Griffin ruled the the District Attorney had failed to prove conspiracy.

The Idaho State Legislature has looked hard at the new solicitation law and is considering expanding it to include agricultural and mining in the future. This expansion will enable the agriculture and mining industries to stop labor demonstrations at farms and mines as well as environmental protests. There are few details of the expansion bill available at this time, but as it moves along the slippery slope of the state legislature, I'll keep you informed.

We are continuing to monitor the legal situation and take the necessary actions on the civil as well as the criminal aspects. We can still use help from experienced lawyers, and the Legal Defense Fund can always use a contribution. If you need any more information, please contact the Moscow office. 🐾

Wilderness Society: New Shame

At about the same moment in late January that one Wilderness Society official was faxing *The Nation* a note saying "we're busting our butts" to protect the environment, another official was scurrying to undo an emergency injunction stopping all logging, road building, mining and ranching in six national forests in central Idaho.

The injunction, the result of the Society's own legal action, outraged not only right-wingers in Idaho's congressional delegation but also the Wilderness Society's Idaho representative, Craig Gehrke. Gehrke called the lawyers (employees of the Sierra Club Legal Defense Fund) and insisted that they ask Judge David Ezra, who granted the injunction, to stay the action and allow logging to proceed. The judge, astonished and angered by the retreat, finally agreed to stay the injunction until March 15.

The Society's explanation has wavered from "facing political reality" to protecting Idaho's jobs and the lives of local environmentalists. Thus did Gehrke doom hopes of preventing the Cove/Mallard timber sale, one of the most bitterly contested clearcuts to be drawn by the U.S. Forest Service in years. Cove/Mallard has been held up thanks only to the Earth First!ers who've put their bodies between the chainsaws and the trees, and by the prospect of the Wilderness Society's injunction. But now Clinton's Forest Service chief, Jack Ward Thomas, who vowed to complete the cut by March 15 will get his wish. Trees have already begun to fall.

Aside from undercutting the credibility of future courtroom challenges (Judge Ezra actually threatened to find the environmental lawyers in contempt), Gehrke's shameful somersault also increases the threat to local environmentalists, who must once more brace themselves against bulldozers, and risk imprisonment under Idaho's new "trespass" law which equates nonviolent civil disobedience on public lands as terrorism. 🐾

This was originally printed in the February 20, 1995 editorial section of The Nation.

The Forest Service is the test case of Clinton's "reinventing government" program. A required survey was conducted by an independent research firm where Americans were asked about their view of wilderness and the Forest Service. Any mention of this survey or it's results are hard to find, it seems the Forest Service didn't like what we had to say.

*Interview with
Stewart Brandy*

continued from page 11

It is the "strength that emanates from back home," which the national groups have turned their backs on. In this strength lies our hope for the future.

Fighting off despair is something each of us are forced to do in this spiritually deprived society. Brandy's greatest motivation: "to look back on my life and say, 'I made a difference.'" One must "fight off the despair," he urges. We need to "show people the skills, nurture their interest, do more outreach, and empower teams of activists in every community."

These are words of vision, but also words with practical implications. "Giving people competence" doesn't happen overnight. While working with the Alliance for the Wild Rockies, Brandy not only participates in the meetings that one might normally envision, he's also working on laying the groundwork for a grassroots strategy, with two-day working sessions to train activists.

Taking the moral high ground has its risks, especially in a society where "morality" more often than not means its opposite. "In the case of the Cove/Mallard

Coalition, these individuals are subject to the worst kinds of recriminations because of their high moral standards," If anyone should know it's Brandy. 🐾

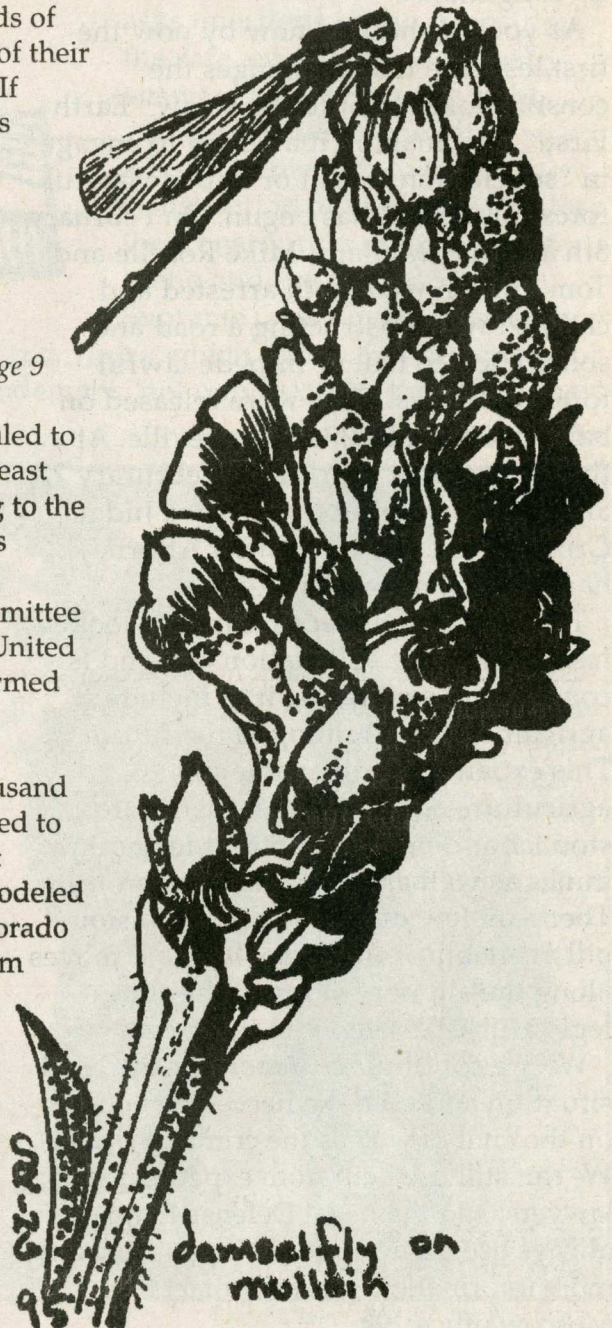
*Idaho Bear
Initiative*

continued from page 9

Yet, these practices continue and are scheduled to continue through to at least the year 2000, according to the Idaho black bear species management plan.

A political action committee called Idaho Coalition United for Bears (ICUB) has formed to direct an initiative campaign for the 1996 election. Forty-two thousand valid signatures will need to be collected throughout Idaho. The initiative, modeled after the successful Colorado legislation, would reform black bear hunting by eliminating bear baiting, the use of dogs, and the spring hunting season. 🐾

Please contact us to get involved. ICUB, P.O. Box 9992, Moscow, ID 83843 (208) 883-4565



Gray Wolf Reintroduction

continued from page 15

gray wolves of Idaho under the Endangered Species Act by challenging the use of the Non-essential/Experimental designation imposed by the Gray Wolf (reintroduction) EIS. This suit does not seek to halt the reintroduction effort in any way; it only seeks legal protection for the wolves of Idaho. The Fish & Wildlife Service has informally threatened to halt the reintroduction effort and "remove" all reintroduced wolves if this lawsuit is successful.

Another point of interest in this affair is the question of who is going to "manage" these wolves now? Under the Gray Wolf EIS, the state of Idaho was supposed to take over this responsibility, but the state legislature—composed of resource extractive interests—is unwilling to do so in the manner suggested by the EIS. In fact, this legislature recently passed a law declaring that no state agency would cooperate in any way with the reintroduction effort. Now they are arguing that they need to be in control.

The agenda of Idaho's plan is so obvious that the Fish & Wildlife Service is unwilling to turn the project over to them at this time. In contrast, the Nez Perce Tribe has an intense spiritual and cultural interest in the gray wolf and the Tribe's biological staff has stepped forward with a proposal that is similar to what the Fish & Wildlife Service expects. However, the state doesn't want to lose control, especially to the Nez Perce with whom the state has an



Gray wolf.

antagonistic relationship. The Nez Perce would do an excellent job for the wolf, unfortunately the Fish & Wildlife Service keeps insisting on negotiating only with the state. Now who do you think will get the job? If you want to write a letter, it's too late. Now is the time to be in court or on the trail or both. It is still possible to document naturally occurring wolves in Idaho for at least one more year. Wolves have been sighted in several areas where they were not reintroduced this winter. The Gray Wolf Committee will be attempting to document wolf activity in these areas this February, March and April. 🐾

If you would like to get involved please contact the Gray Wolf Committee, 219 East E. Street, Moscow, ID 83843

61% of the respondents agreed that threatened and endangered species in the United States public forests and grasslands should be protected even if it has a negative impact.

TIMBER ALTERNATIVES PROJECT

A new project has been formed to research and develop sustainable economies in timber-dependent communities. The goal of this project is to find long-term sustainable economies in rural areas; sustainable for the environment and for the people.

We also have a directory of groups that have developed and implemented alternatives to cut and run management such as low-impact logging, manufacturing of wood products rather than whole log exports, as well as alternatives to timber products. We are researching various economic models to see which ones could be feasible in Idaho.

For more information on this project, Please contact Natalie at the Moscow office (208)882-9755

Payette Salvage

continued from page 8

The scoping phase ends March 10, 1995. Until that time, the public can comment on the initial proposals. Letters should name the four projects, and remind the Forest Service that:

- The Forest Plan should not be amended for the purpose of allowing short-term economic gain at the expense of watersheds, soil, and biological communities.
- Fire salvage is an unacceptable justification for roadless area entry.

- Habitat for all Threatened, Endangered, and Sensitive species—including gray wolf and Chinook salmon—is more important to the public than accelerated timber outputs.

- The Forest Service is incapable of convincing the public that postfire recovery demands human intervention.

Letters should be addressed to David Alexander, Forest Supervisor, Payette National Forest, PO Box 1026, McCall, ID 83638; and must include the signer's name and address. Draft EIS's are expected in May, Finals in August, and implementation in September. Yes, this year. 🐾

79% agreed that the long term health of public forests should not be compromised by the short-term need for natural resources.



The Payette forest showing a natural burn

MINING IN THE PAYETTE FOREST

BY DARRYL MCECHT

Once there was a gold boom in these parts. The East Fork of the South Fork of the Salmon River (EFSFSR) wears the scars from that time. Tailings fill the creeks. A massive human-made cascading pit in the river bed, called the Glory Hole, bars Chinook from making it upstream. These historic mine sites pose a continued threat to aquatic life. However, these are not testament to a lesson learned. They are scars downstream from an open, throbbing wound, a wound called the Stibnite Mine.

This mine is the source of two cyanide leaks into the EFSFSR in the past three years. The mine, owned by Stibnite Mines, Incorporated, has a sordid past with a long history of violations. The area, known as the Yellow Pine Mining District, is a Superfund site. A **CERCLA** Preliminary Assessment/Site Investigation of the Stibnite Mine completed in December, 1993 reveals the site as a perpetual threat to the crippled watershed. Even with the mine's new manager and retrofitted pads and ponds (purportedly leak proof), this mine is a virulent assault on the water and its inhabitants. What options exist for clean-up? The best answer I have heard is

this: "Only geologic time can fix that river." Well, clearly it is time for that healing to begin. But, of course, some fools don't see it that way.

The Forest Service is considering approving a 272 acre, 15 year expansion—a bloated operation with more open pits, more tailings, more cyanide. The mine expansion requires a complicated shuffle through the bureaucracies: approval from the Boise National Forest, an permit from the EPA, a Permit for Ore Processing by Cyanidation and resolution of Consent Decrees (which result from violations) from the Department of Environmental Quality. This operation makes a mockery of the Clean Water Act and the Endangered Species Act, and blatantly violates numerous state water quality regulations and various EPA standards. While the Forest Service decides whether or not to grant approval, Idaho Rivers United has forged ahead and filed a 60 day notice of intent to sue on this project under the ESA. 🐾

For more information on Payette National Forest projects; contact: the Cove Mallard Coalition, Salmon Selway Project, 502 N 3rd, Suite 157, McCall ID 83638.

Salmon Selway Defender

Forest Health...

Continued from page 19

than the "timber management" of the present century. The "dinosaur forester" must give way to the new generation "naturalist forester." Invent any new word you like to describe us, but we are here, we care, and we will bring change!

In 100 years, the work of a millennia has been unraveled, producing the ultimate feeble forest dominated by weak, poorly formed, slow growing, disease prone trees. This is the real "unhealthy forest" that awaits only a disturbance to set off deterioration. A major obstacle to future "forest health" is whether it is possible to reclaim the superior genetic pool of trees excavated recklessly and mindlessly for more than 100 years.

Living systems heal, and yet recent publication ignores this fact. It is this same negative, myopic view that dominated past forestry, which provided nothing to assure forest improvement, rather only lasting extraction. emphasis must be reversed. Instead of recitations of dreadful figures and woeful predictions, we want and demand a shift to labeling, discovering and measuring all of the elements that control forest conditions. Let us concentrate our efforts to enumerate and renew wild gene pools of fish, wildlife, trees, fungi, insects, bushes, grass, herbs, and all other living things. Let us embrace forest betterment and forget the obscurities embodied by "forest health." We know that balanced

forest ecosystems naturally tend to improve then not drastically disturbed, using this fact, we can enjoy and use our forests gently and continuously.

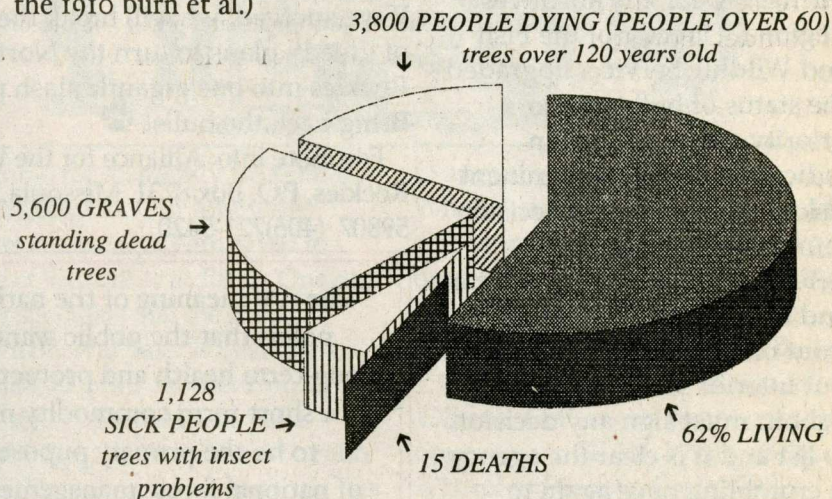
With this challenge we have thrown down the gauntlet, now it is time for us to demand answers to our questions. The "managers," particularly those with uniforms, have a hat full of jargon and excuses; these are our real "health" problems. An unhealthy fraternity of "professionals" distort and hide reality behind paradigms,

euphemisms, mutations, and half truths rather than explain conditions openly, directly, and clearly in order to serve the public. 🐾

65% agreed
that the federal government
should increase the
regulation of commercial
use of public forests.
Some 38% said
they "strongly agreed."
Only 22% disagreed
and 13% had no opinion.

UNDERSTANDING "FOREST HEALTH"

The process used to produce the figures released by the "Forest Health" crusaders can be described using a similitude. Since forests and towns are similar, with populations of people insted of trees dominating the town, we can use them to describe "Forest Health" conditions in human terms. If we take the town of Moscow, ID as an example; of the 24,600 people living in the town 38% are dead and dying cumulatively. (like counting all symptomatic trees, recently killed trees, trees dead standing from the 1910 burn et al.)



But if you look at these figures honestly less then 3% of the town of Moscow dies each year (like counting only newly killed tress) and only 5% of the town's population is sick at any given time (like counting only currently sick trees)

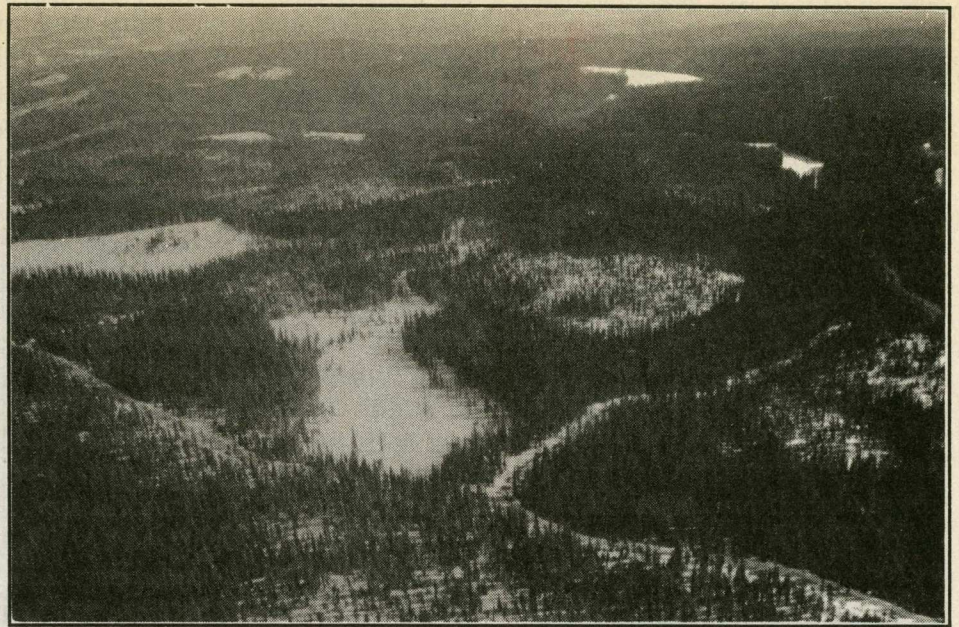
The Battle for the Bull Trout

continued from page 23

In response to this intransigence two key lawsuits have been filed. The first, filed by the Alliance for the Wild Rockies and Friends of the Wild Swan, challenges the US Fish and Wildlife Service "warranted but precluded" ruling and seeks an emergency listing of bull trout. The second suit, filed by the Alliance for the Wild Rockies, Friends of the Wild Swan, Swan View Coalition, and Kettle Range Conservation Group, challenges the Forest Service for failure to provide for viable populations of bull trout as required by the National Forest Management Act. This suit affects 30 national forests from the Continental Divide to the Pacific Ocean. It seeks to enjoin all illegal activities that harm bull trout and their habitat.

In the latest development, Michael Spear, the northwest Regional Director of the Fish and Wildlife Service, upgraded the status of bull trout to priority status "3", again indicating high and imminent risk of extinction. His decision found their overall status deteriorated over the past year and technically moves bull trout one step closer to listing. But Interior Secretary Bruce Babbitt must sign any decision to list and it is clear the agency is crumbling once again to illegal political pressure from western interests.

As this issue goes to press, events are unfolding on a daily basis. The battle for the bull



The Cove and Mallard timber sales, Noble road in the foreground.

trout is more than just another species going down the drain. Its survival is a test of the Endangered Species Act itself. If bull trout and their habitat are knowingly allowed to be destroyed, it will prove that industrial interests have succeeded their hostile takeover of public lands, Congress, and the law itself. It will also dash any hopes of developing a sustainable society that respects the rights of all creatures great and small. If we succeed, we will break the back of greedy plans to turn the Northern Rockies into one gigantic slash pile. Bring back the bulls! 🐾

For more info: Alliance for the Wild Rockies, P.O. Box 8731, Missoula, MT 59807 (406)721-5420

"The real meaning of the national poll is that the public wants long-term health and protection-not short term commodity needs to be the primary purpose of national forest management." said Jeff DeBonis, head of Public Employees for Environmental Responsibility (PEER) which conducted the survey.

NREPA

continued from page 21

scientists, and economists from the Northern Rockies region and the US." Ralph Nader has also provided a statement of support for NREPA.

His Taxpayers Assets Project noted that NREPA would save taxpayers hundreds of millions of dollars by eliminating below-cost timber sales and costly road construction projects in pristine roadless areas.

Add your voice to the list of supporters by writing your Representatives in Congress. Tell them to pass NREPA and other regional protection bills and begin an ambitious program of ecosystem restoration. Please send a copy of your letter to members on the subcommittee listed on page 33 as well. 🐾

For more information contact the Alliance for the Wild Rockies, P.O. Box 8731, Missoula, MT 59807, phone 406-721-5420.

FAX 'em!

Tell your congressperson about wilderness & wildlife & roadless areas!

Ask Jack for a copy of the PEER survey!

Don't know your congressperson's Fax #?

Call the general switchboard
202-224-3121.

Also please fax copies to the very important sub committee listed here.

MORE FAX NUMBERS

President Bill Clinton 202-456-2461
Vice President Al Gore 202-456-2461
Janet Reno
Attorney General 202-514-4371
Jack Ward Thomas
Forest Service Chief 202-205-1765

Craig's Wilderness Bill

continued from page 20

the diversity of age and species blend into a chaotic medley and the old growth stands tall. Remnant pockets in managed forests are targeted; it is the untouched forests in dwindling roadless acres that provide the "pumpkins" timber executives hunger for. The Wise Use Movement, with Senator Craig and friends as its new legislative arm, is selling the public on the notion that wildfires need to be fought, that roads are the only way to reach and excise the enemy. They are preparing for war with bloodthirsty vengeance. The casualties will be incalculable.

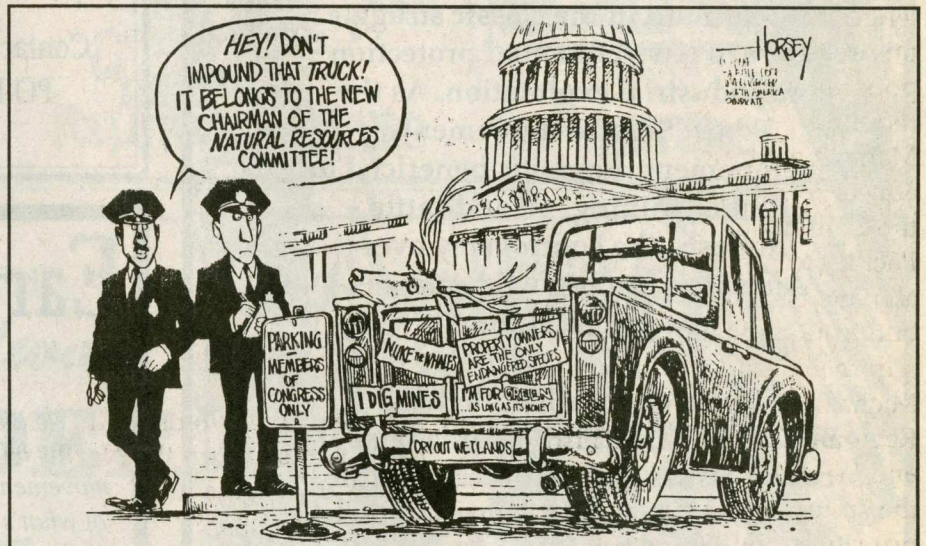
As wildlands activists, we

NATURAL RESOURCES COMMITTEE

SUB-COMMITTEE ON NATIONAL PARKS, FORESTS & LANDS

Don Young (R-AK)
full committee chair 202-225-0425
James Hansen (R-UT)
subcommittee chair 202-225-5827
Eni Faleomavaega
(D- American Samoa) 202-225-8757
Carlos Romero-Barcelo
(D-Puerto Rico) 202-225-2154
Robert Underwood
(D-Guam) 202-225-0341
John Duncan (R-TN) 202-225-6440
Joel Hefley (R-CO) 202-225-1942

John Doolittle (R-CA) 202-225-5444
Wayne Allard (R-CO) 202-225-8630
Richard Pombo (R-CA) 202-226-0861
Peter Torkildsen (R-MA) 202-225-8037
JD Hayworth (R-AZ) 202-225-3263
Barbara Cubin (R-WY) 202-225-5057
Wes Cooley (R-OR) 202-225-3046
Helen Chenoweth (R-ID) 202-225-3029
Linda Smith (R-WA) 202-225-3478
George Radanovich (R-CA) 202-225-3402
John Sadegg (R-AZ) 202-225-2462
Bill Richardson (D-NM) 202-226-2160
Nick Joe Rahall (D-WV) 202-225-9061
Bruce Vento (D-MN) 202-225-1968
Dale Kildee (D-MI) 202-225-6393
Pat Williams (D-MT) 202-226-0244
Gerry Studds (D-MA) 202-225-2212
Nathan Deal (D-GA) 202-225-8272
Maurice Hinchey (D-NY) 202-225-0774



scramble for a strategy to combat this legislation. Our lobbying efforts are meager compared to those of the timber industry. One can easily speculate that the Forest Health bill will pass. This sham legislation gains momentum by preying on alarmist fears of a grossly miscalculated forest health crisis. The crisis, however, truly lies in the inevitability that environmental protection laws will be rendered moot. In Idaho, it is a felony to solicit to halt or impede timber sales. Soon, our legal right

to appeal sales will be stifled. When our voices are quashed and all channels silenced, we have only our bodies with which to fight. We have been backed into a corner, and it is time to show our teeth.

Flood your Senator's offices with vehement letters and phone calls of opposition to SB 391. While you're at it, bombard Senator Craig's office with words of protest. Don't neglect to remind your Representatives to stave off similar legislation in the House. Stand ready to descend upon the woods! 🐾

BEYOND BORDERS

Wildlands of the Northern Rockies

The Wild Northern Rockies contain vast wildlands as pristine as when Lewis & Clark explored them nearly 200 years ago.

They have become a major battleground in the classic struggle between environmental protection and industrial exploitation. As the Forest Service implements development programs beneficial to timber, mining, oil and cattle interests, the controversy over America's last big wilderness is reaching a climax.

Filmed on location, the film BEYOND BORDERS takes a look at current issues and explores possible solutions with key figures in the debate. With time running short for the grizzly, the wolf and the salmon, BEYOND BORDERS compels us to ask: What legacy will we leave in the Northern Rockies?

Produced by
GREEN FIRE PRODUCTIONS

Please send \$15 for your copy to
The Alliance for the Wild Rockies
PO Box 8731 Missoula, MT 59807

COLD MOUNTAIN/COLD RIVERS VIDEOS

COVE/MALLARD:

Defending the Big Wild

This 20 minute video takes you through the geography and history of the Cove/Mallard area. It introduces you to some of the people involved in the campaign.

FOREST HEALTH:

A Timber Salvage Story

Dr. Art Partridge, of the University of Idaho's forestry Department, explains the Forest Health scam. Dr. Partridge's expertise in forest diseases and insect infestations make this video especially pertinent.

Contact Cold Mountain/Cold Rivers at
PO Box 7941 Missoula, MT 59807
(406)728-0867

Earth First!

The Earth First! Journal is published 8 times a year to cover the NO COMPROMISE environmental movement. The EF! Journal will inform you of what's happening and where, with news of direct actions and tactics of eco-defense. The EF! Journal is provocative, informative, controversial, amusing and diverse in content and style.

*You don't get it like this anywhere else.
\$25 regular \$35 first class \$45 airmail*

SUBSCRIBE TO THE JOURNAL!

PO Box 1415 Eugene, OR 97440
(503)741-9191

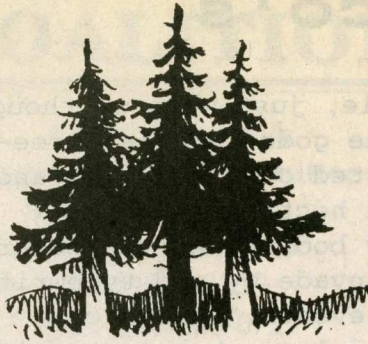
THE U.S. FOREST SERVICE'S
REVEALING **NEW**
TERMINOLOGY...



TEMPORARY MEADOWS



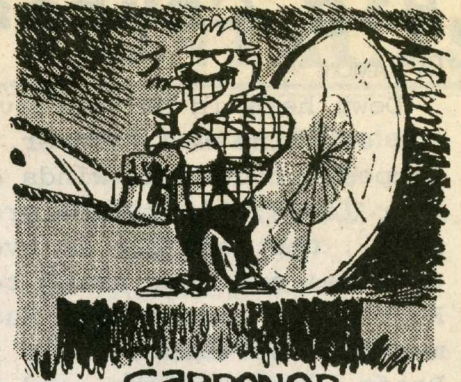
INSECTS



WEEDS



POLLUTERS OF NATURE



GARDENER

RISSE © 1993 THE SEAKSMAN REVIEW



NATURE

SUBSCRIBE TO THE
Salmon Selway
DEFENDER

Please send \$25
for a years subscription -
more if you have it,
less if you don't.

Please make checks payable to
the Cove/Mallard Coalition.

COVE/MALLARD COALITION
P O BOX 8968
MOSCOW, ID 83843



THREE-COLOR

100% unbleached cotton T-shirt

Fifteen Dollars

Contact the Coalition at
PO Box 8968, Moscow, ID 83843

Big Chubasco's

By RAMON

Down here in Margaritaville, just when we thought the sunshine was forever, the gods threw a three-day tempest at us. The winds gusted over 60 miles an hour (oops; 100 kilometers an hour, I think I mean), the sand got in every bodily and vehicular orifice, and even tried to invade my old typewriter, Royal. The locals call such events "Chubascos," meaning, we think, "Holy frijoles, what a storm!" Roofs, wooden signs, and trees all came down and immediately were salvaged for use in cooking fires.

The small army of retirees from the States got to spend an entire day cleaning and sweeping, and everybody visited with everybody else with self-congratulatory stories of courage and imperturbableness. Dead dolphins and seals washed up on the next tide, and are objects of great curiosity and some sadness; no one likes to see Flipper die. All in all, a singular occurrence, the "happening" of the season.

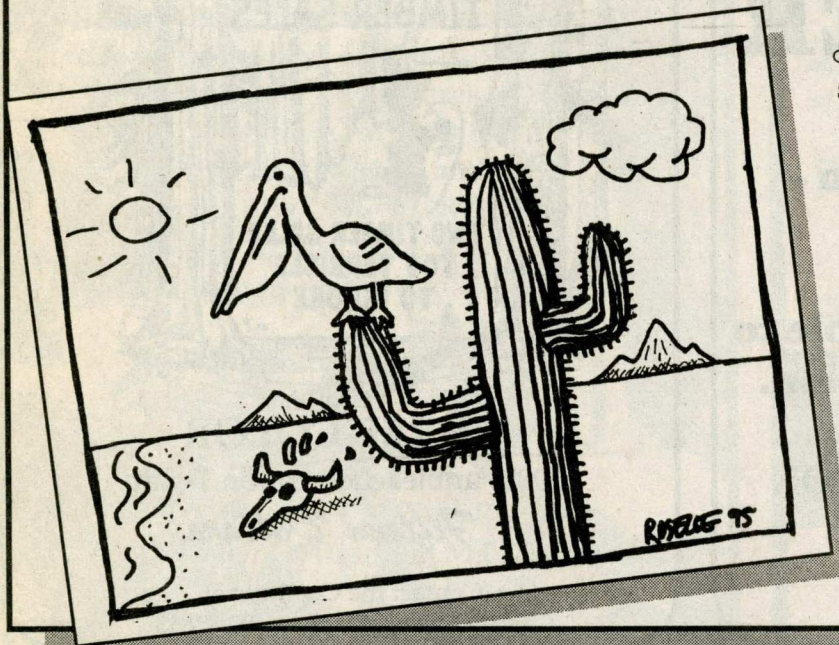
On the 8th of February, Central Idaho experienced an "happening" of its own, as Mike Roselle and Tom Fullum managed to get themselves arrested on the new Idaho felony law (see accompanying article). For those of you who have not had the pleasure of meeting these esteemed gentlemen, let me just say that their combined height and weight must be at least 13 1/2 feet and close to 550 pounds. Announcing their intention to blockade the Noble road, they joked and chatted with the County cops for a couple of hours before the first piece of equipment showed up. They then placed their considerable quantity of charismatic megafauna in the beast's path, and promptly were busted. The entire illegal act took about 3 1/2 seconds, prompting Roselle to quip that the equipment operator probably tarried longer at STOP signs.

All in all a singular occurrence; the event of the season. So, congratulations to our Big Chubascos for pushing the envelope in that special spirit that has been the hallmark of the Cove/Mallard Campaign since Day 1:

- A) Organize, organize, organize, then...
- B) Risk everything.

See you in Cove/Mallard this summer !!!!

Ramon





Great 100% vegetarian
backcountry food!
1-800-758-2418

COALITION CONTACTS

**Seeds of Peace &
Legal Defense Committee**
PO Box 8968
Moscow, ID 83843
(208)882-9755
FAX (208)883-0727

**Northern Rockies
Preservation Project**
805 West Idaho #415
Biose, ID 83702
(208)345-8077

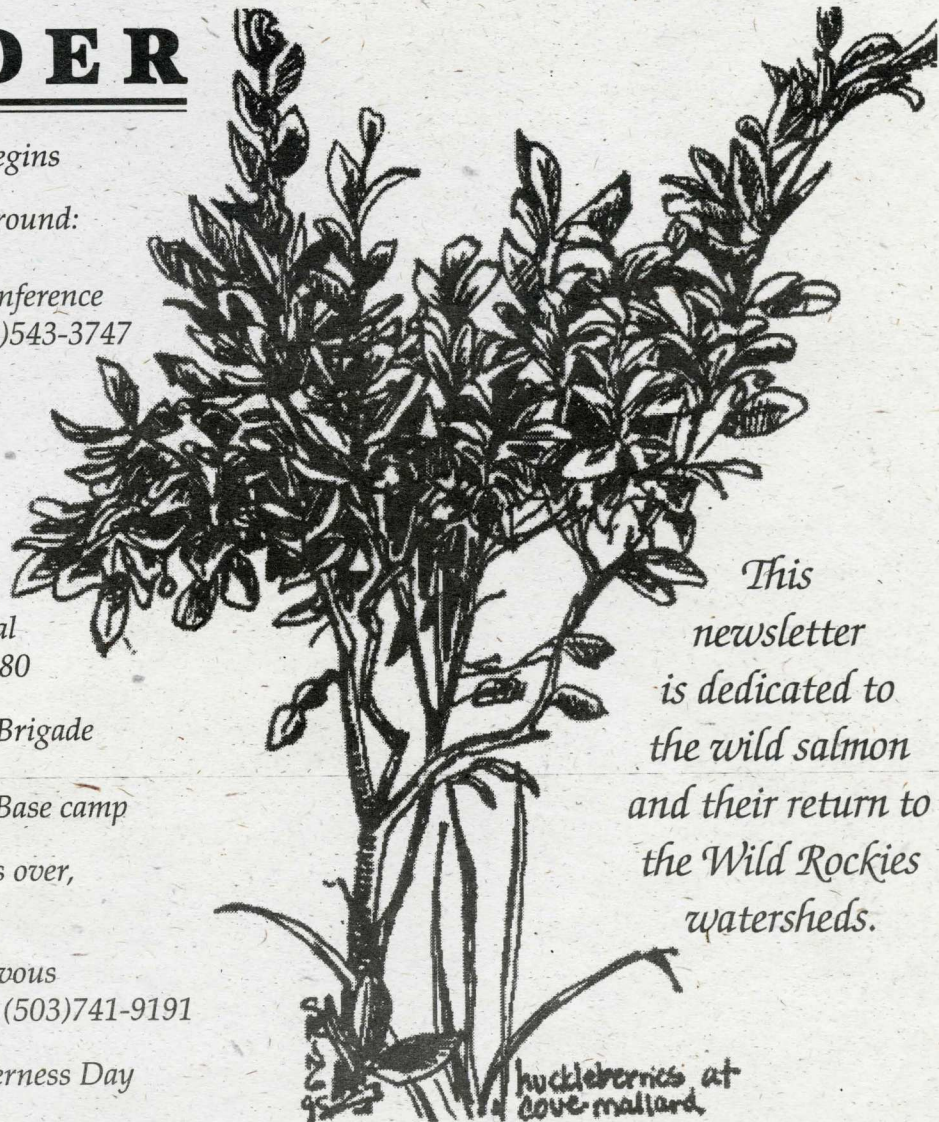
Salmon Selway Defender
127 East Main #319
Missoula, MT 59802
(406)543-2929
FAX (406)543-2912

Salmon Selway Project
502 N 3rd#157
McCall, ID 83638

Native Forest Network
PO Box 8251
Missoula, MT
59807(406)251-2385
FAX(406)251-2386

CALENDER

- March 15 Elk calving season begins
- May 5-7 Finding Common Ground:
Gender, Justice &
the Environment Conference
contact Bryony (406)543-3747
- May 18-23 British Columbia
EF! Rendezvous
contact Vancouver
EF! (604)473-0174
- April 8-15 18th annual
Wildlife Film Festival
contact (406)728-9380
- June 1 Ancient Forest Bus Brigade
& Seeds of Peace
open Cove/Mallard Base camp
- June 15 Elk calving season is over,
logging resumes
- June 26 Earth First! Rendezvous
contact EF! Journal (503)741-9191
- August 17 Wild Rockies! Wilderness Day



This
newsletter
is dedicated to
the wild salmon
and their return to
the Wild Rockies
watersheds.

huckleberries at
Cove-Mallard

The Cove/Mallard Coalition
Salmon Selway Defender
127 East Main #319
Missoula, MT 59802

BULK RATE
US POSTAGE
PAID
MISSOULA, MT
PERMIT #74