The background of the entire image is a light gray topographic map with white contour lines. Two solid teal horizontal bars are positioned behind the main text. The word 'PALOUSE BASIN' is in a dark blue, sans-serif font. The word 'AQUIFER' is in a teal, serif font, with a teal water drop icon integrated into the letter 'Q'. The word 'committee' is in a dark blue, lowercase, sans-serif font.

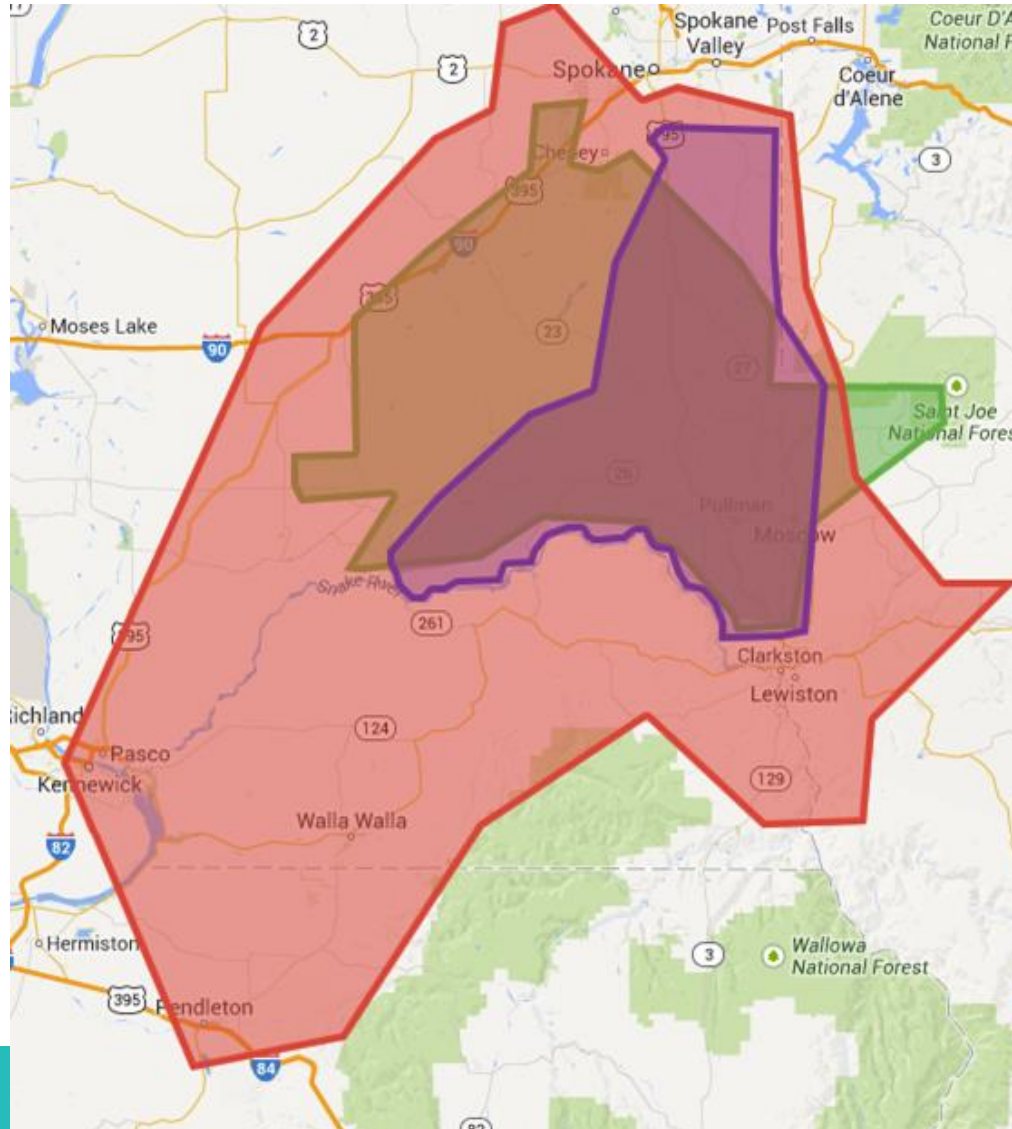
PALOUSE BASIN AQUIFER committee

Working to ensure a long-term, quality water supply for the Palouse Basin region.

PBAC Member Entities

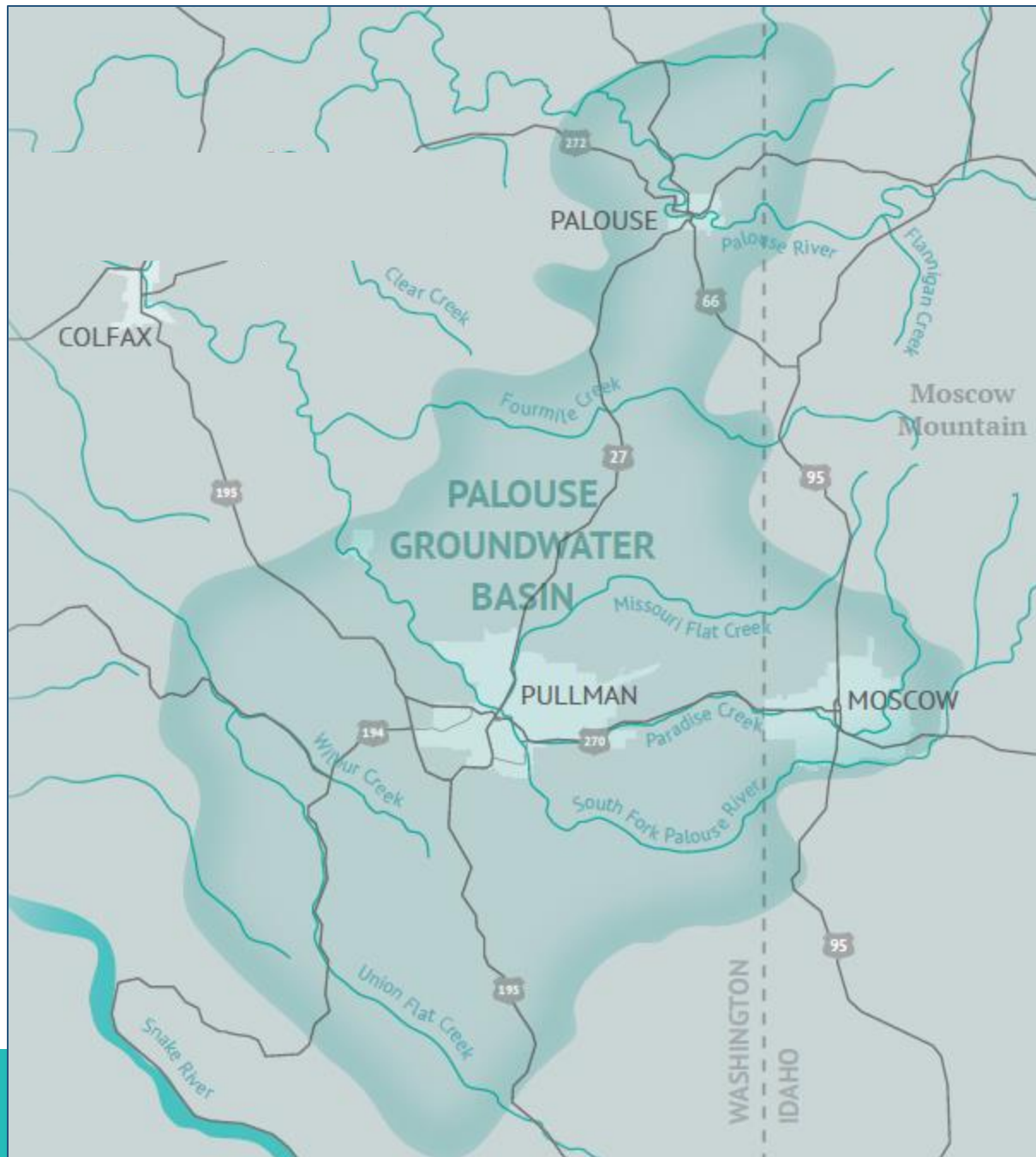


What is the Palouse?

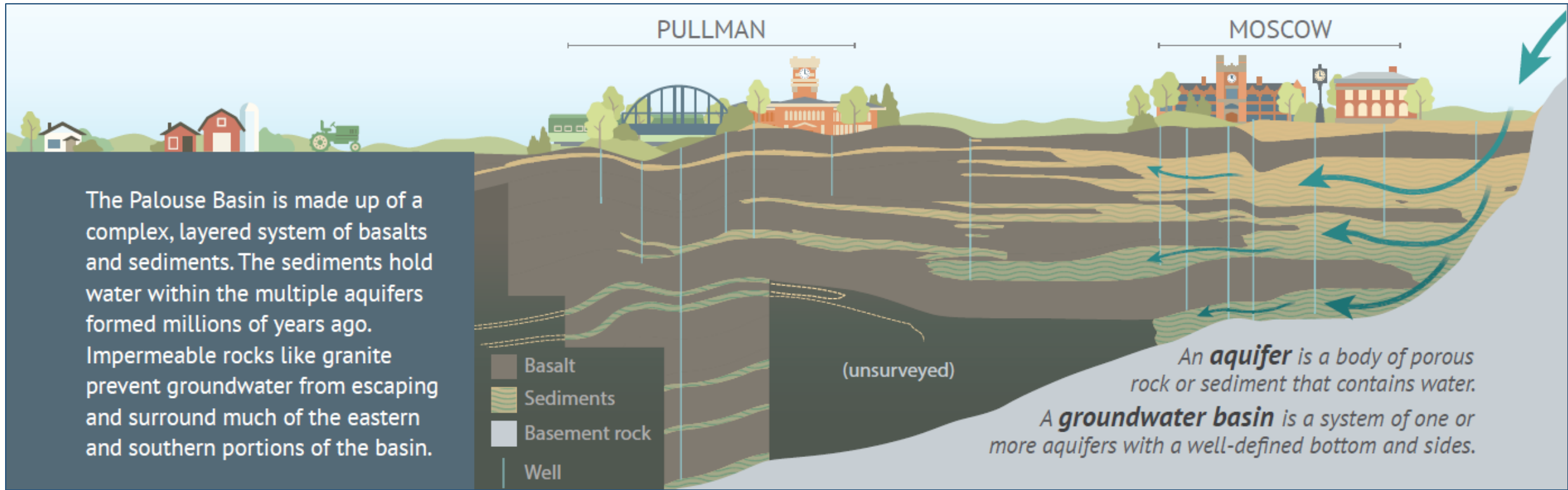




PALOUSE BASIN
AQUIFER
committee



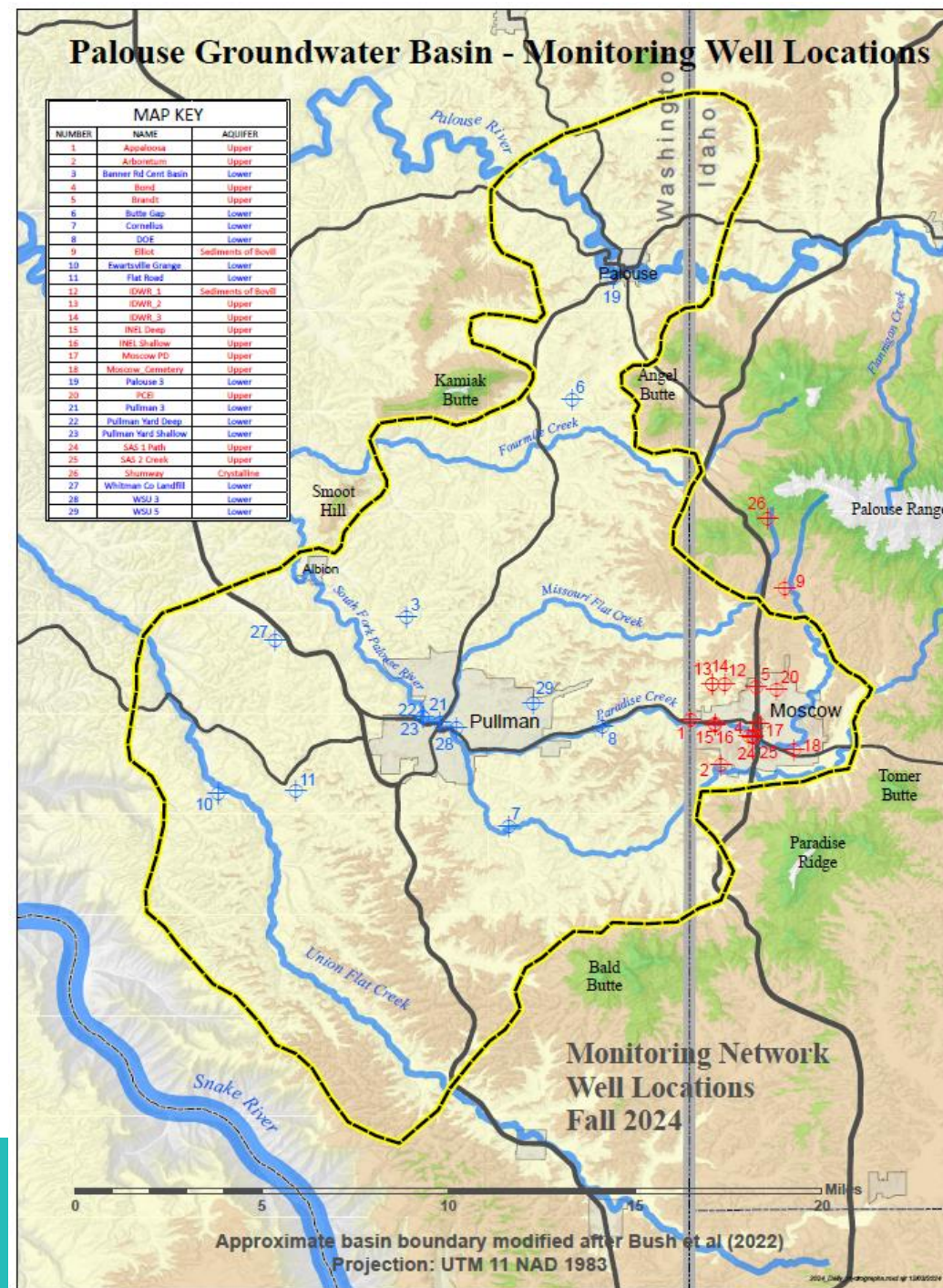




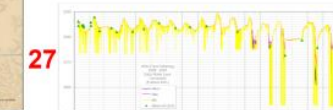
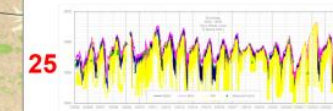
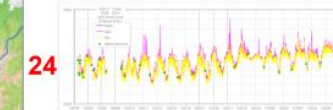
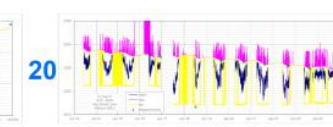
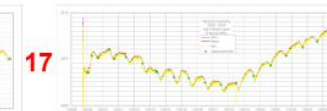
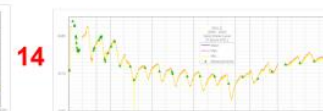
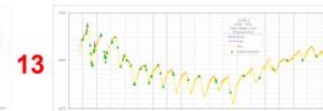
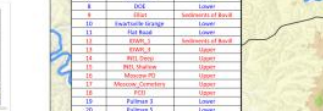
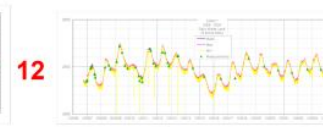
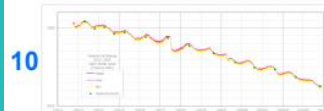
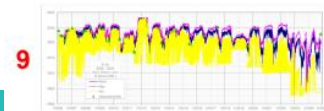
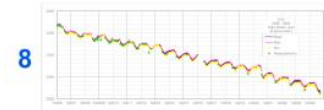
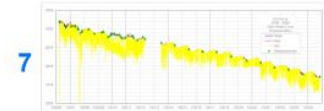
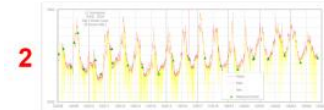
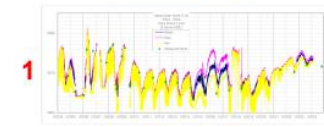
What's PBAC doing?

- Continued monitoring and reporting on aquifers' conditions, to ensure compliance with GWMP.
- Expanded our focus on water conservation outreach, including adding a staff position.
- Funded Uofl research project to find best locations for passive aquifer recharge in the Palouse Basin.
- Launched study investigating a Clearwater River diversion as a potential supplemental water supply.

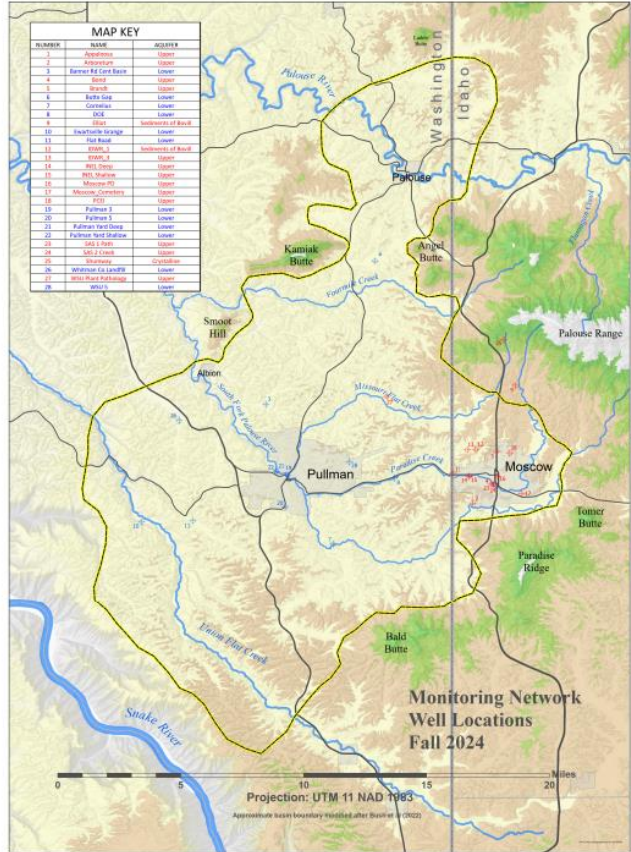
Monitoring well levels



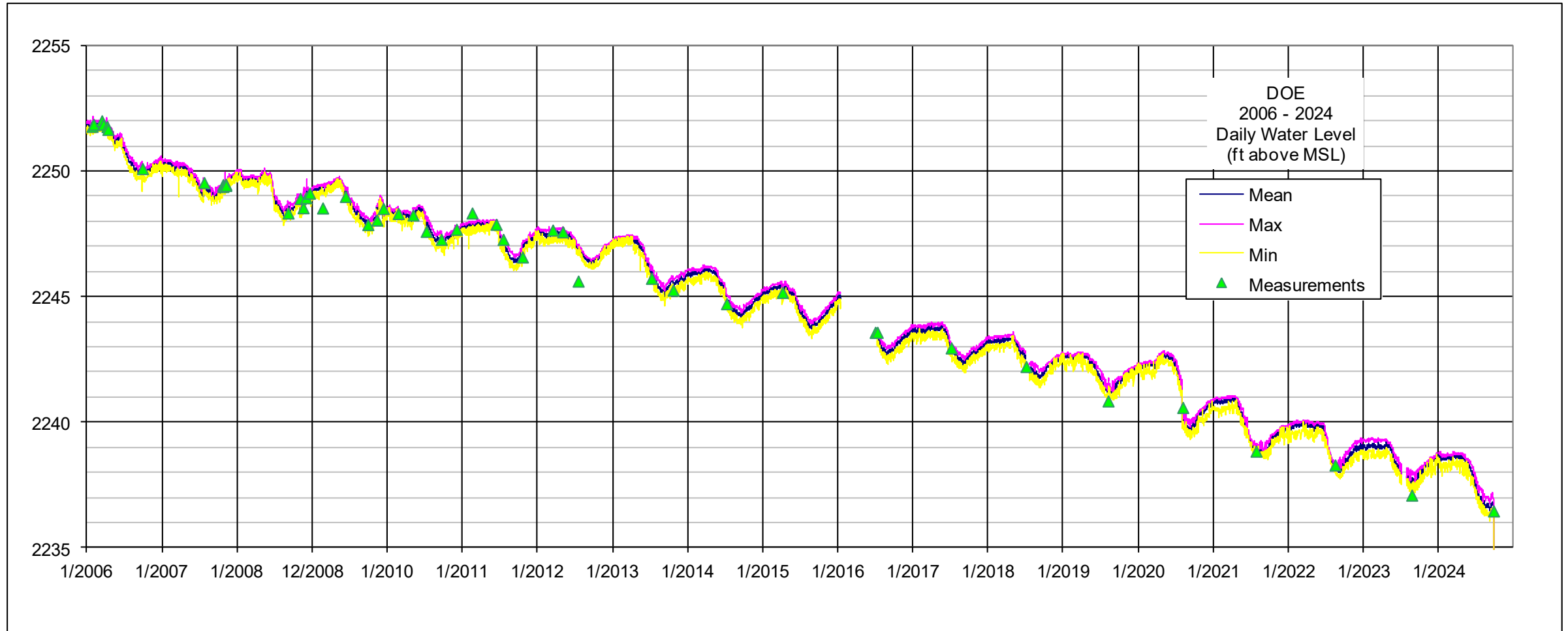
Hydrographs



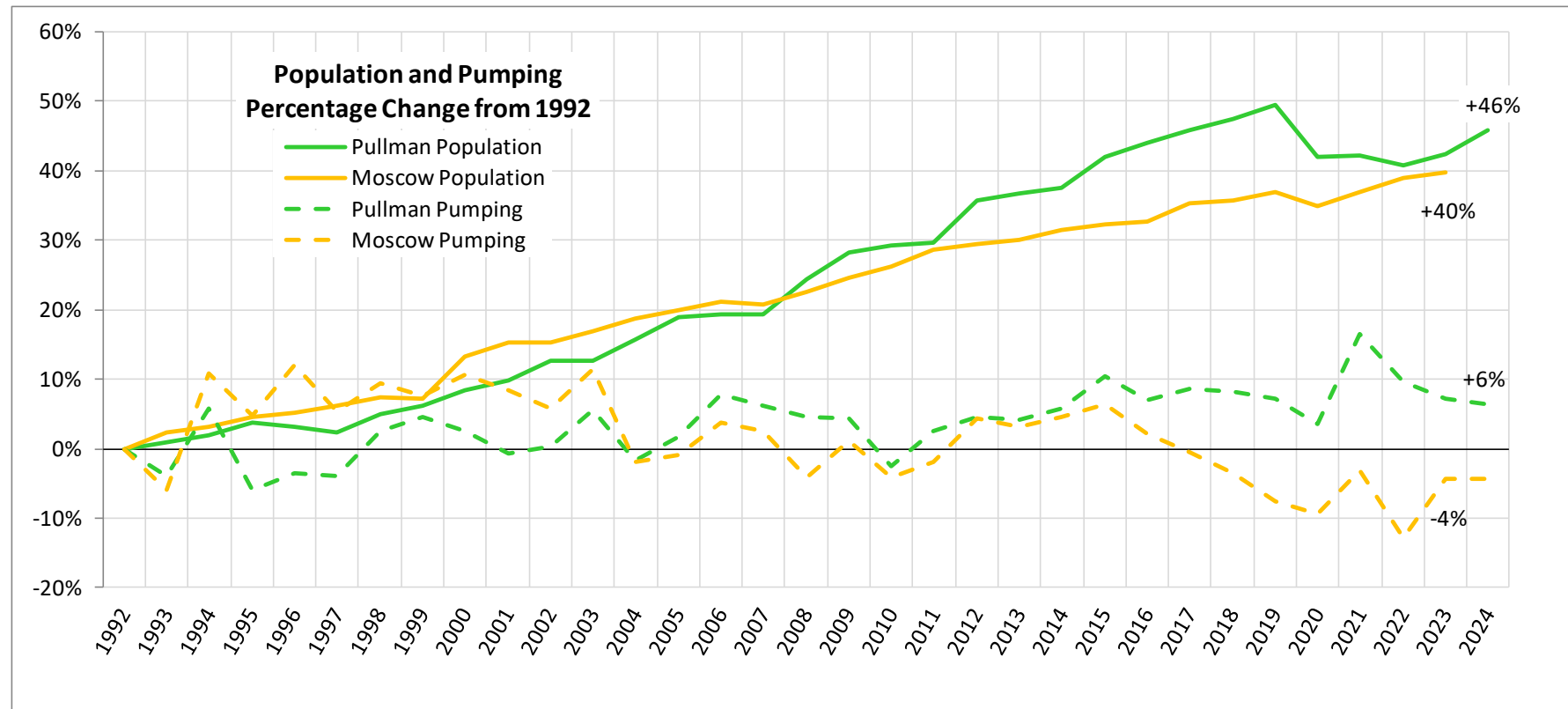
Palouse Groundwater Basin - Water Level Hydrographs



Lower aquifer water levels - declining at 0.71 ft/yr



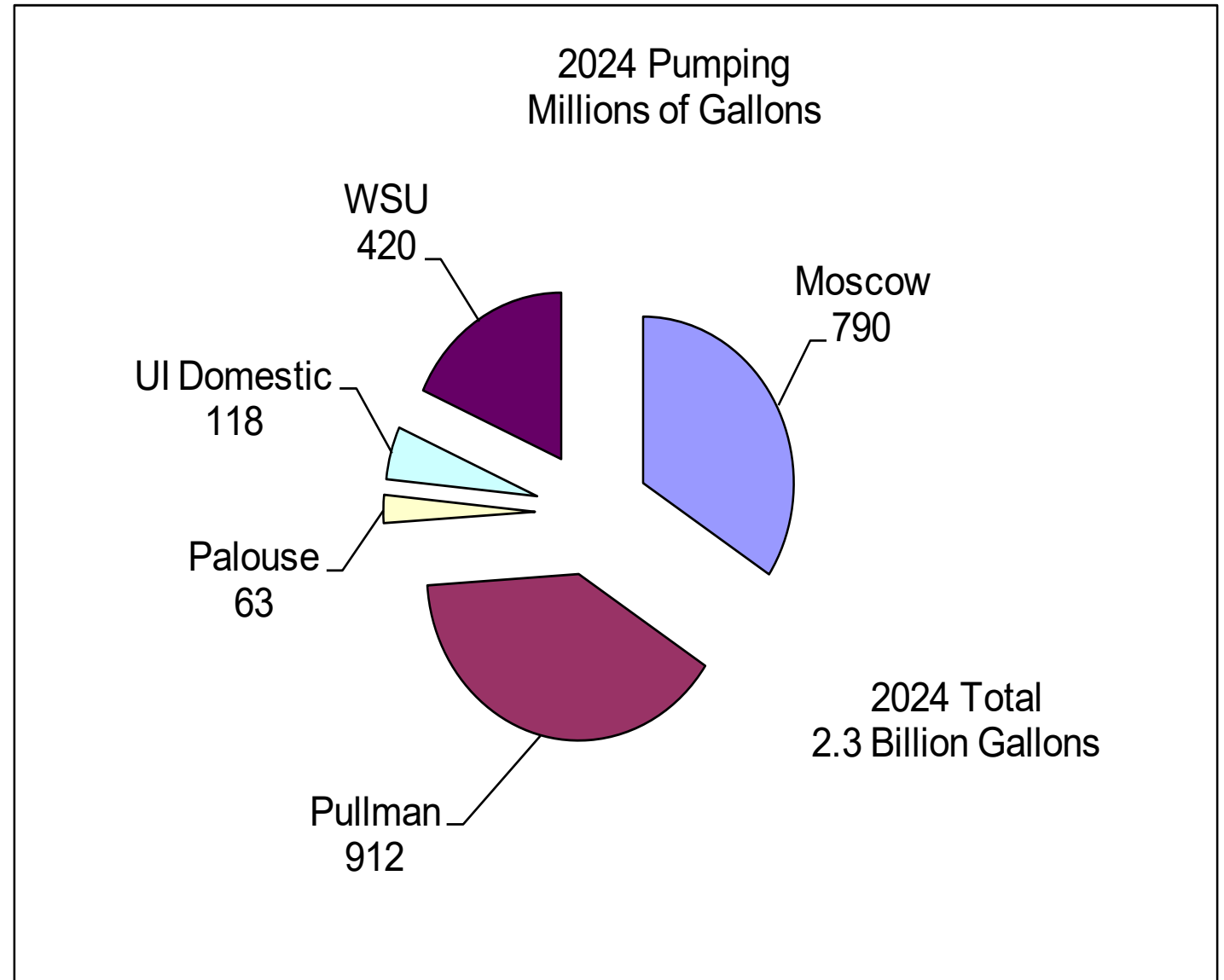
Pullman/Moscow Population and Pumping 1992 - 2024



Average year-over-year Population Change \approx 1.1%

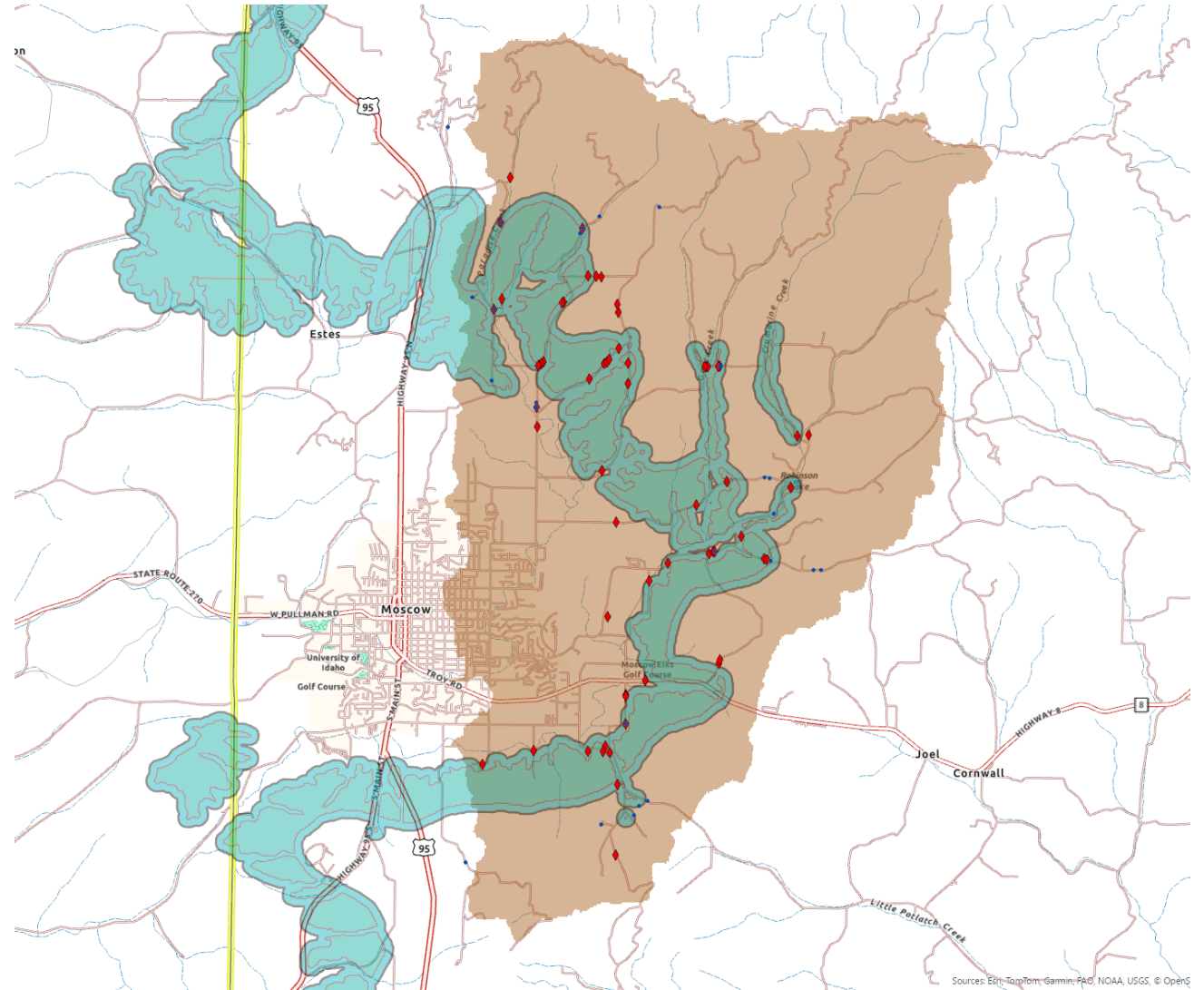
Water usage by basin entities

- Useful information for looking at relative changes
- Not useful for direct comparisons

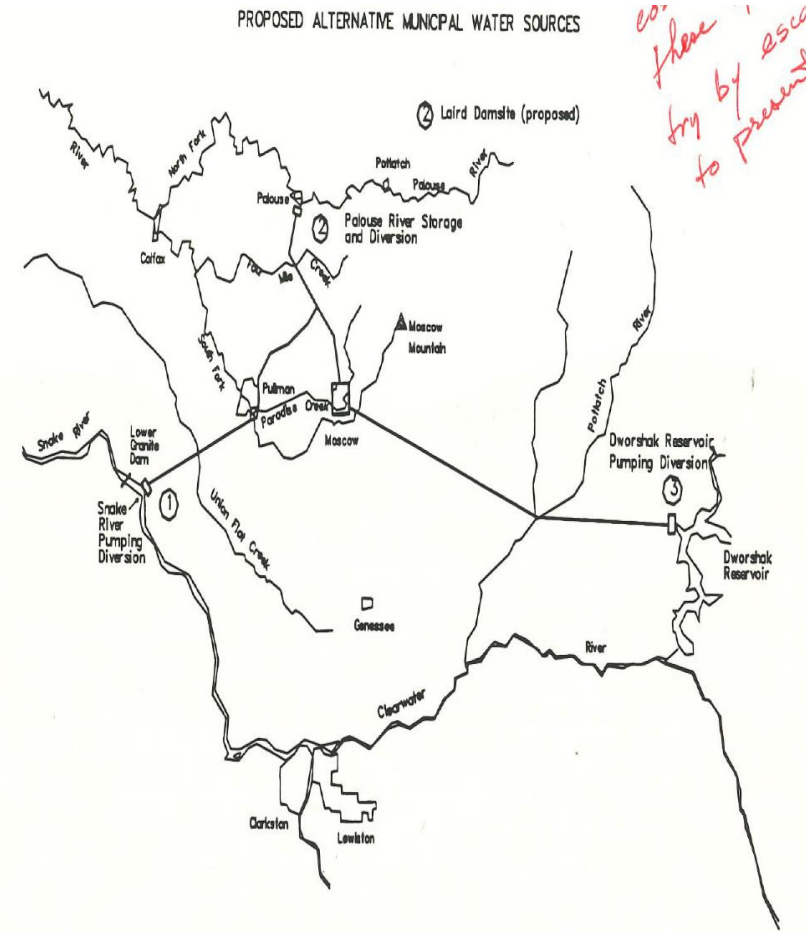
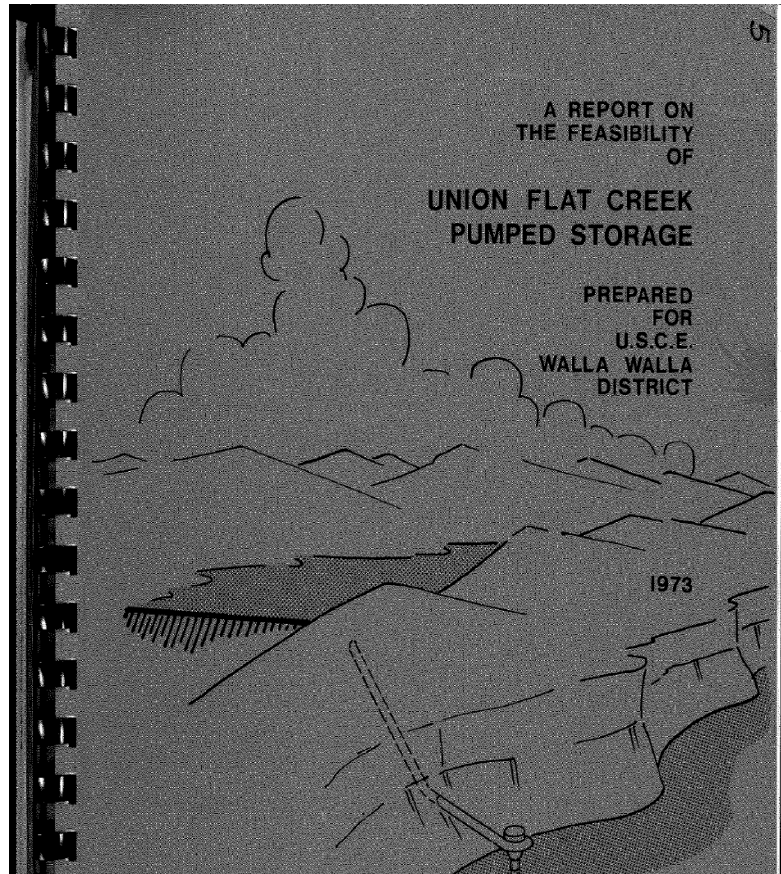


Passive aquifer recharge research project

- Goal is to determine best areas for passive aquifer recharge
- PBAC-funded University of ID project, launched Summer 2025
- Working with willing landowners to provide samples from private wells
- We're looking for participants!



Potential supplemental water sources have been studied for quite a while.....

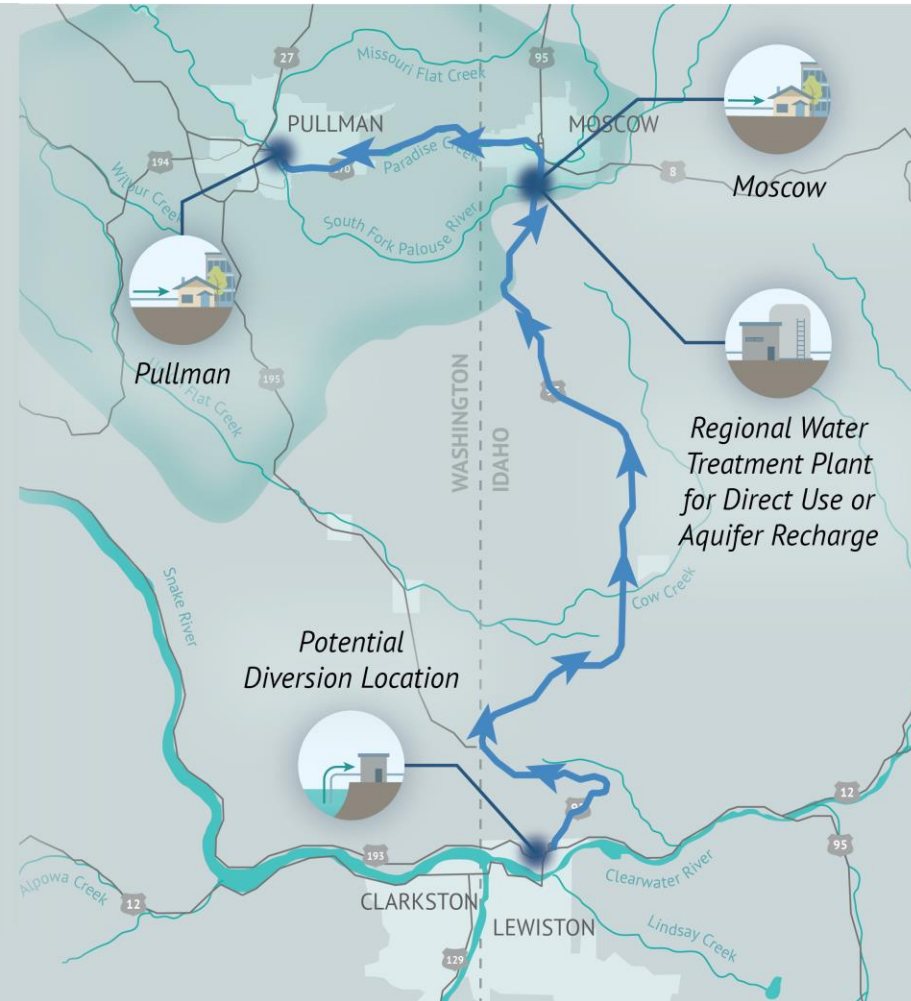
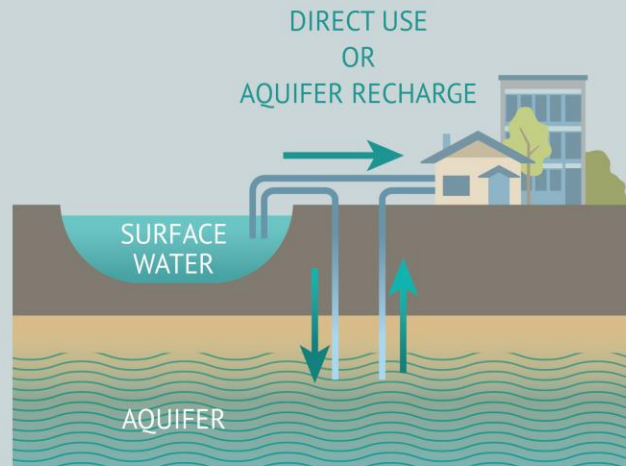


This is where years of studies have taken us

Potential Diversion from Clearwater River

Direct Use of the Clearwater River:

Surface water would be diverted from the Clearwater River and conveyed to a new regional water treatment plant. There it would be treated and conveyed into the existing municipal water system for Moscow and UI or used for aquifer recharge. An additional pipeline could allow treated water to be conveyed to Washington into the existing municipal system for Pullman and WSU or used for aquifer recharge.



STAY IN TOUCH WITH US!

PalouseBasin.org



Facebook



Instagram



YouTube

Monthly Meetings on the Third Thursdays