

# DEVELOPING A STATEWIDE MATERIALS MANAGEMENT PLAN



Presented by:

Manda Wood, MS  
*Environmental Scientist*

*Alta*  
Science & Engineering, Inc.

*Great West*  
engineering®

**Idaho Solid Waste Association**

## MY BACKGROUND

- *BS Environmental Science, MS GIS – University of Redlands*
- *ESRI Tech Support for ArcPad and Mobile Devices*
- *Field Operations focus to support soil and water sample collection, wetland delineations, stormwater infrastructure, bird/sensitive species surveys*
- *Automating data processes with Survey123*



# SWIFR INTERNET SEARCH?

Microsoft Bing

SWIFR



Sign in

Rewards



ALL

SEARCH

IMAGES

VIDEOS

MAPS

NEWS

COPILOT

MORE

SafeSearch: Moderate

Filter



Taylor Swift  
2021 Songs



Swift  
Drivers



Swift  
Bird



Swift  
Banking



Vaux  
Swift's



Taylor Swift  
Live 2021



Taylor Swift  
Songs Current



SWIFT-  
Code



Swift  
Driving



Taylor Swift  
Willow Song



Swift  
Car



T. Swift  
Songs



Including results for **swift**.  
Do you want results only for **SWIFR**?



Taylor Swift and Seth Talk The Life of a Showgirl,  
Travis Kelce and More

540.2K views · 3 days ago  
YouTube · Late Night with Seth Meyers



Taylor Swift | The Eras Tour | The End of an Era |  
Disney+

366.2K views · 3 days ago  
YouTube · Disney Plus



Swift is just too slippery on 55-yard catch and run  
TD

76.4K views · 2 days ago  
YouTube · NFL



Taylor Swift Eras Tour Docuseries: Watch Never-  
Before-Seen Moments ...

22.1K views · 2 days ago  
YouTube · Entertainment Tonight



First look at Taylor Swift's Eras Tour docuseries  
coming to Disney+

290.8K views · 3 days ago  
YouTube · Good Morning America



Taylor Swift: Movie Star | Amsterdam | Hulu

94.6K views · 1 week ago  
YouTube · Hulu



Taylor Swift: The Eras Tour - Official 'The End of an  
Era' Docuseries Traile...

25.4K views · 2 days ago  
YouTube · IGN



How To Do Taylor Swift's 'Dance of Ophelia' Moves

103.8K views · 1 week ago  
YouTube · Inside Edition



Taylor Swift makes big announcement Monday

6K views · 2 days ago  
YouTube · WCNC



Kate Hudson Reacts to Goldie Hawn and Kurt  
Russell's Sweet Career Sup...

705.7K views · 5 days ago  
YouTube · Entertainment Tonight

# SWIFR BACKGROUND

- DEQ - EPA Grant (SWIFR)
  - **Idaho SWIFR grant program** refers to federal funding from the Environmental Protection Agency (EPA) for **Solid Waste Infrastructure for Recycling** that is administered by the Idaho Department of Environmental Quality (DEQ) -
- *Partnered with Idaho Solid Waste Association (ISWA)*
- *Engaged Alta to support.*
  - *Alta partnered with Great West – Sub-contractor*

\$275 M Nation Wide  
2022-2026



# GRANT OVERVIEW

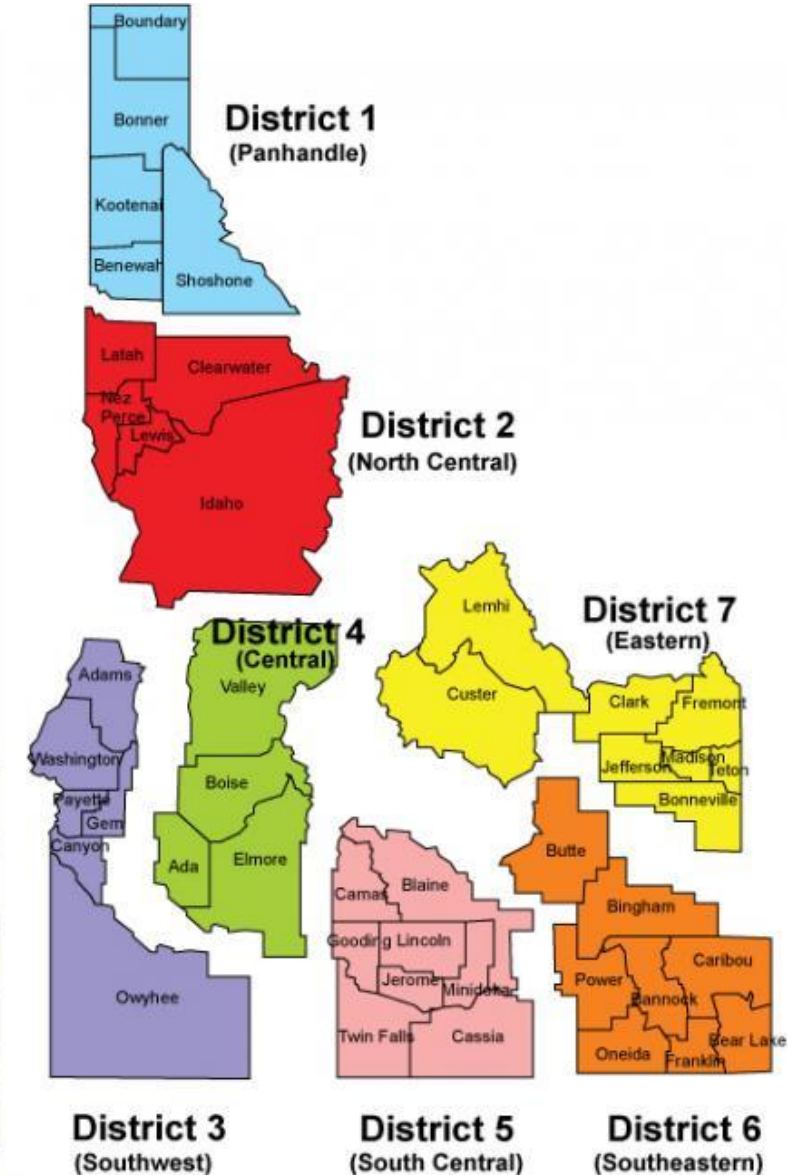
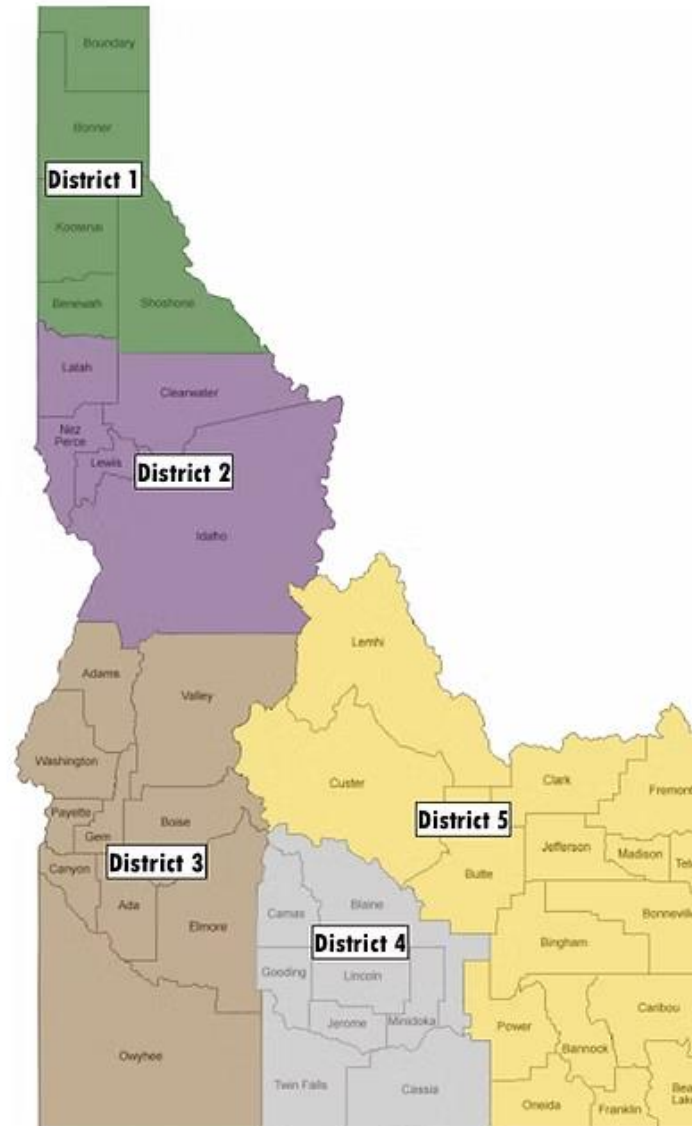
- Establish Materials Management Planning Regions
- Establish Data Collection Program
- Assist Regions with Data Tasks
- Assist Facilities with Outreach & Priority Data Gaps
- Develop Regional Management Plans
- Develop a Statewide Management Plan







## Establish Planning Regions





## Establish a Data Collection Program

- Idaho does not mandate reporting on recyclables from facilities accepting waste. Statewide data was needed to start the planning process.
- ESRI's Experience Builder with a custom reporting tool.
- Through the form and associated web map, DEQ can establish baseline data, identify gaps, set goals, track progress, and compare future results.

### Facility Reporting

#### Site Information

[About this Form...](#) ▶

\*Requested data is for most recent calendar year available.

Choose year:

Has a waste characterization study for this site been completed previously?

☐ Yes

☐ No

☐ Unknown

#### Survey Date

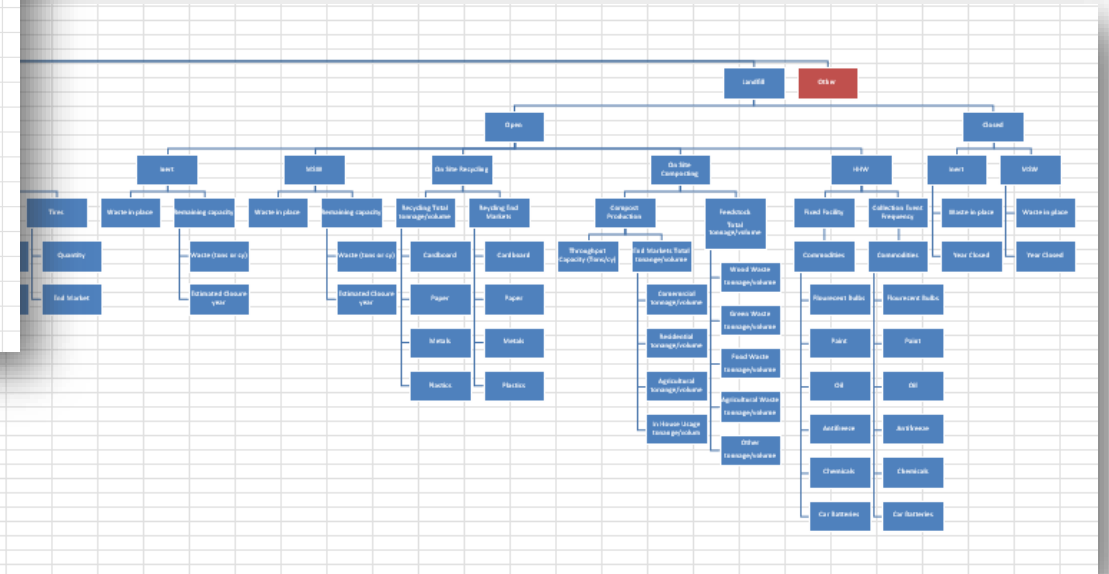
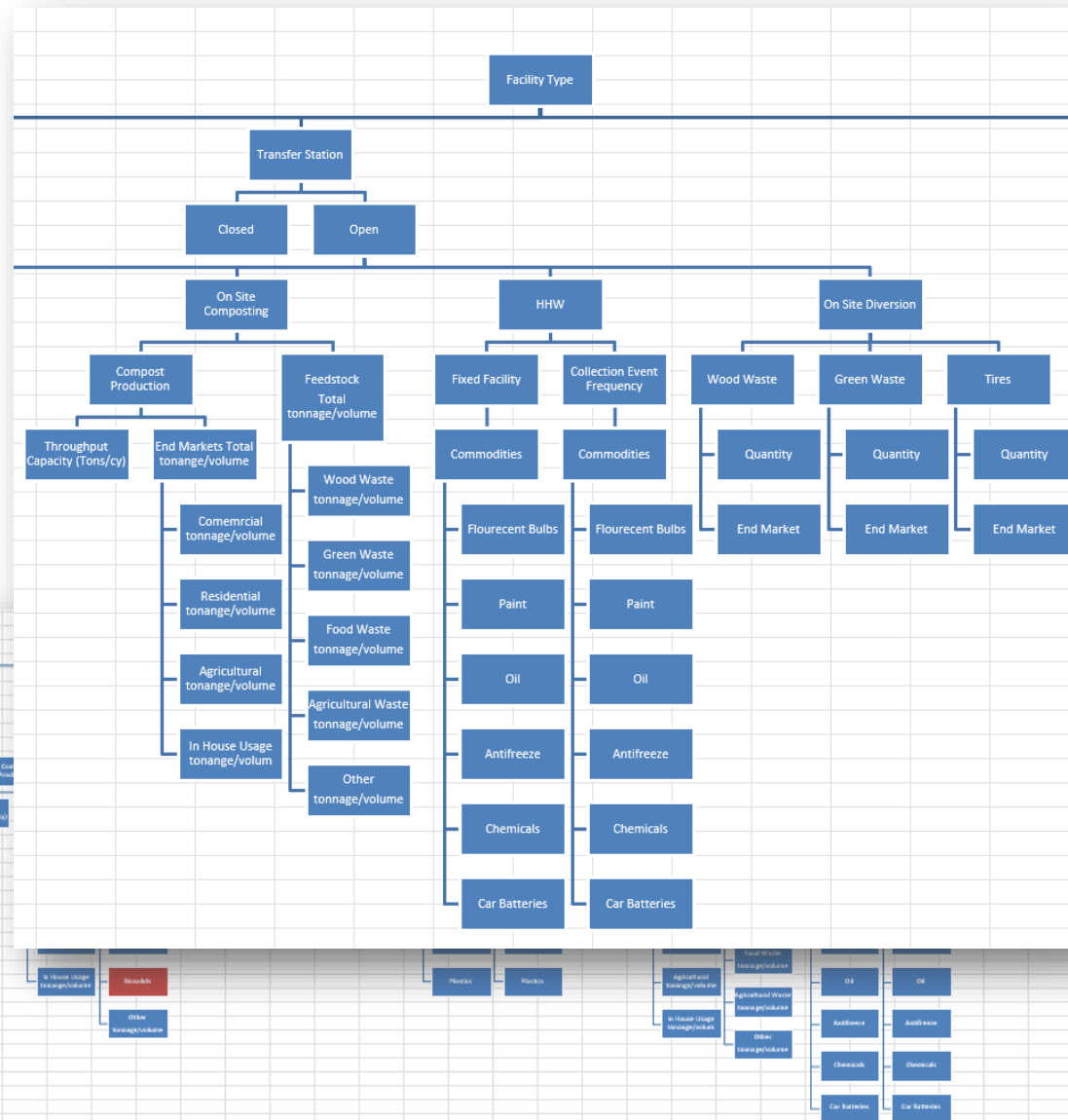
Today's date.

#### Contributor Name\*

Enter your first and last name.

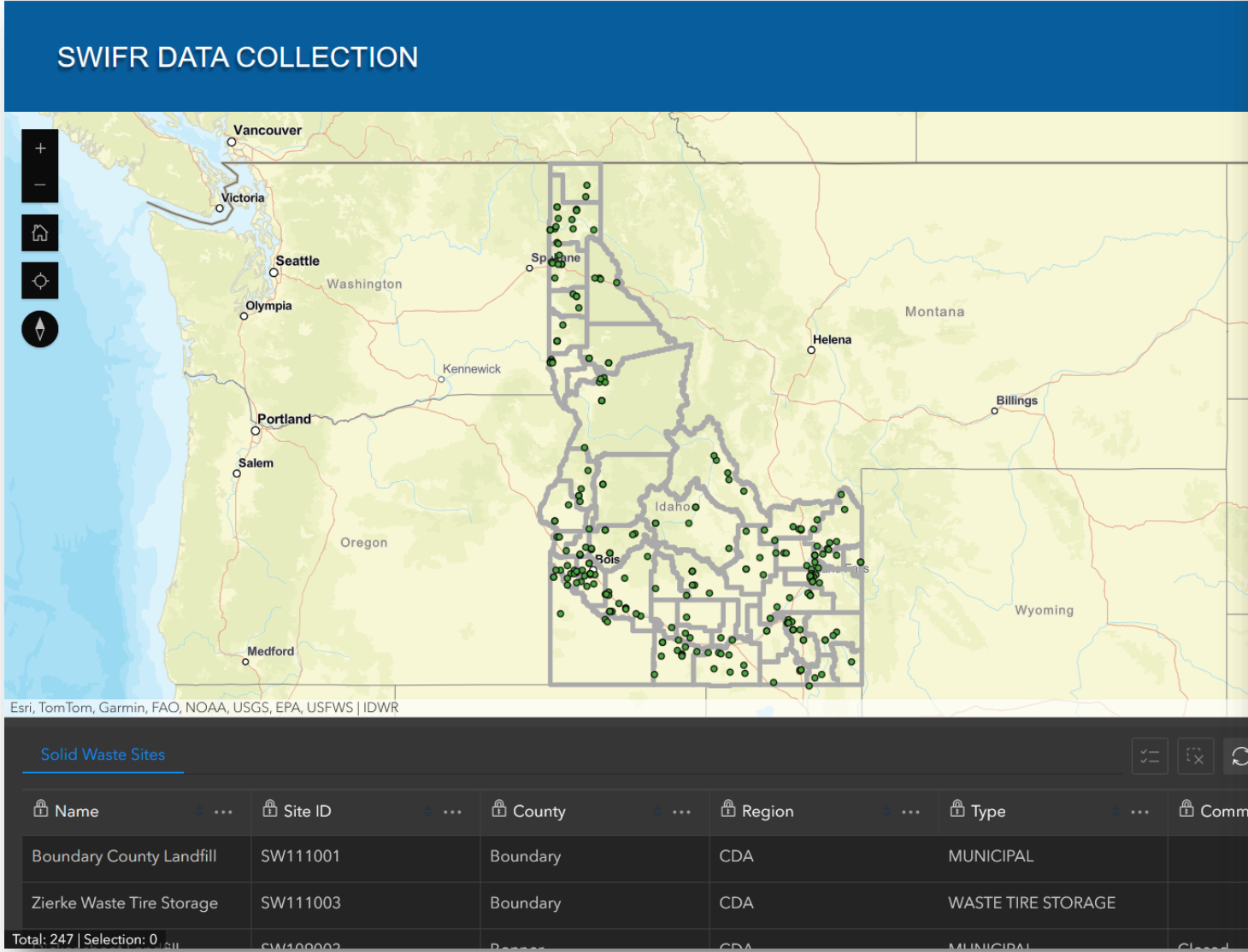
#### Email contact:\*

# Decision Tree





# Experience Builder



Facility Reporting

Site Information

About this Form... >

\*Requested data is for most recent calendar year available.

Choose year:

-Please select-

Has a waste characterization study for this site been completed previously?

☐ Yes

☐ No

☐ Unknown

Survey Date

Today's date.

10/9/2025

Contributor Name\*

Enter your first and last name.

Email contact:\*

Primary Facility Type\*

☐ Composting Facility

☐ NSWI

☐ NMSW Landfill

☐ MSW Landfill

☐ Petroleum Contaminated Soil

☐ Recycling Center

☐ Tire Storage Facility

☒ Transfer Station

☐ Other

Is this facility currently open or closed?\*

☒ Open

☐ Closed

Site Activities

Select all activities that occur at your site:

☒ Composting

☒ Petroleum Contaminated Soil Processing

☐ Tire Storage (Tire Storage Facilities only)

☐ Waste Transfer

☒ MSW Landfilling

☒ NMSW Landfilling

☐ Asbestos Disposal

☒ Recycling and/or Diversion

☐ HHW Program

☐ Other

☐ None

Waste Transfer (1) ▾

1

Current Site:

Almo Transfer Station

Annual Throughput Capacity:

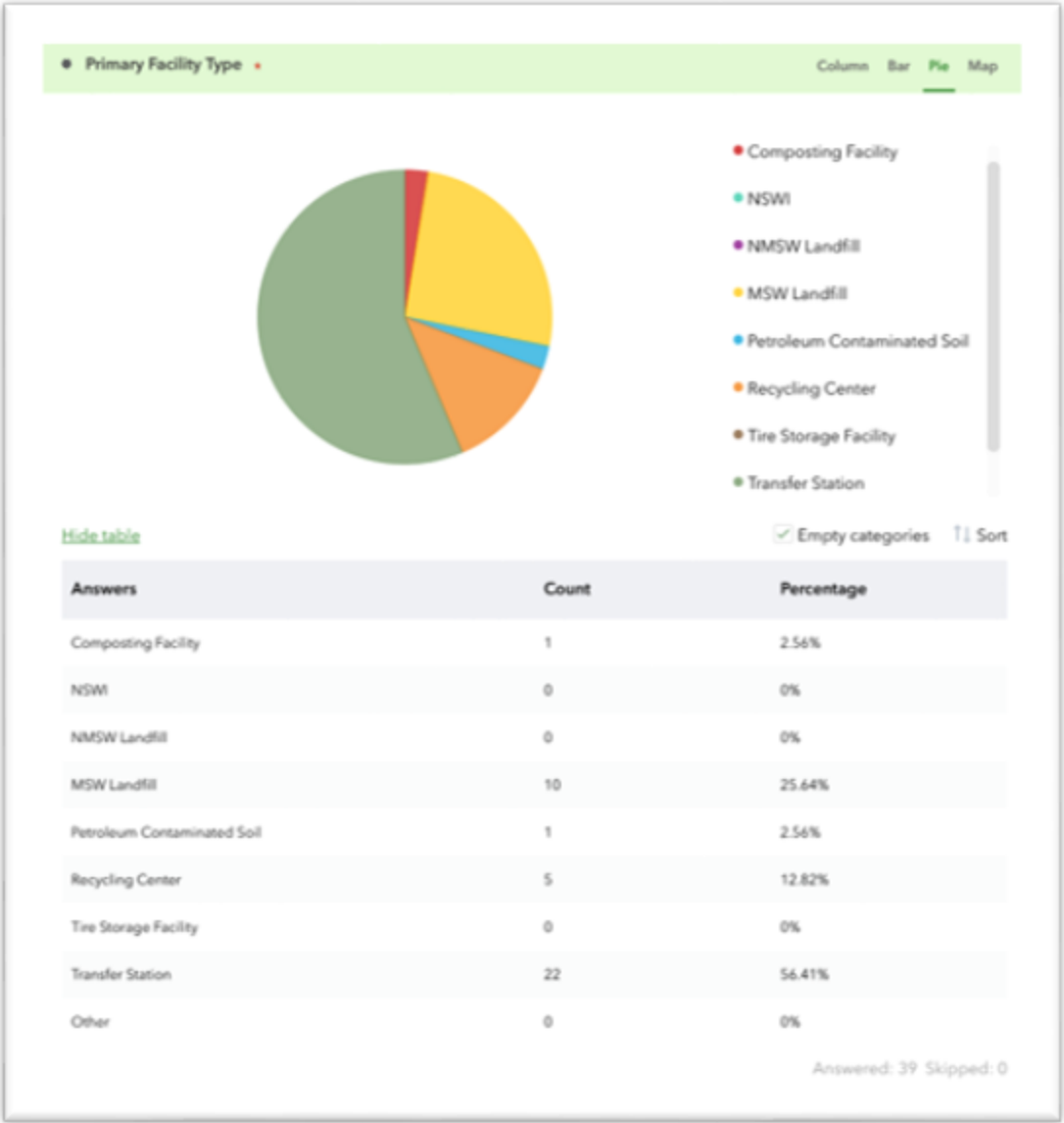
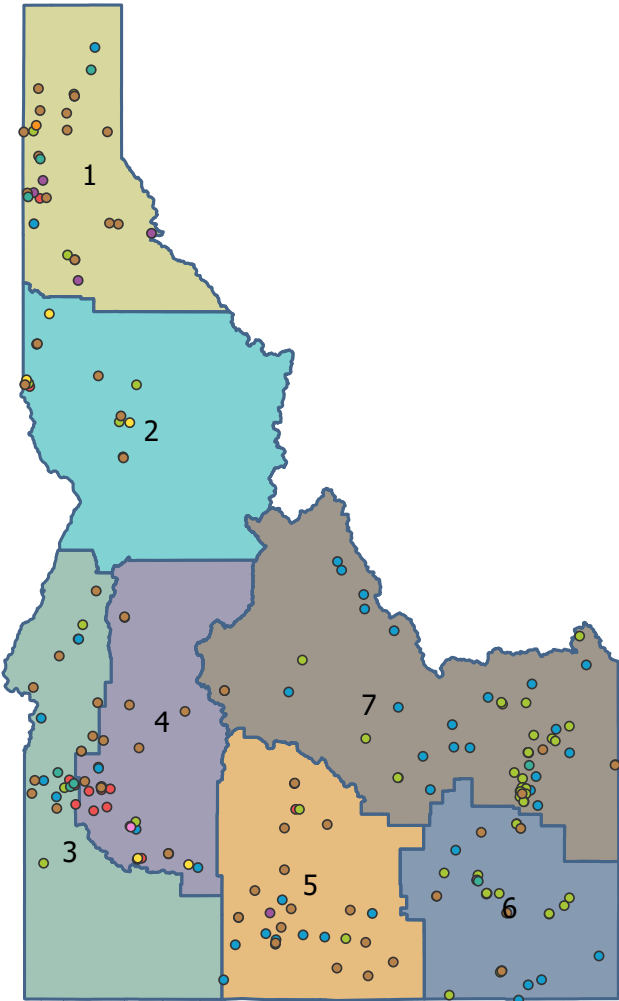
23

Waste Transferred:

23

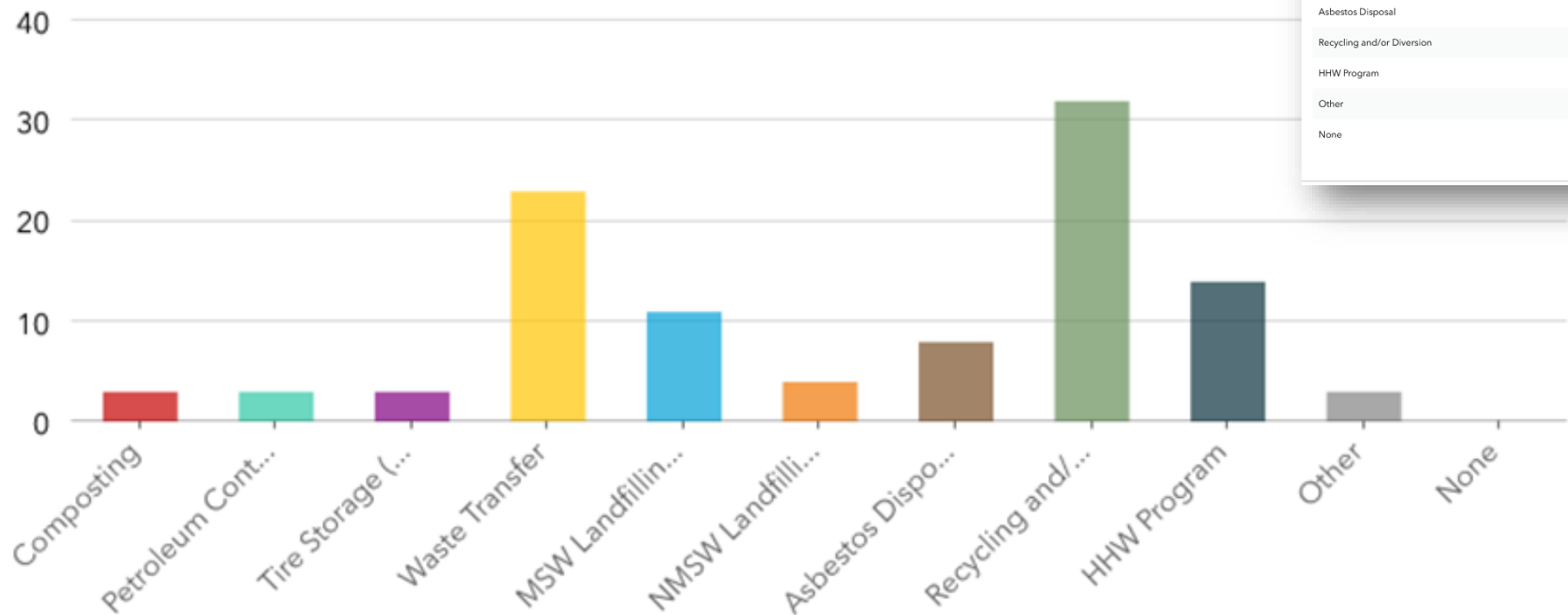
Transferred To (location):

# Primary Facility Type



# Secondary Activities

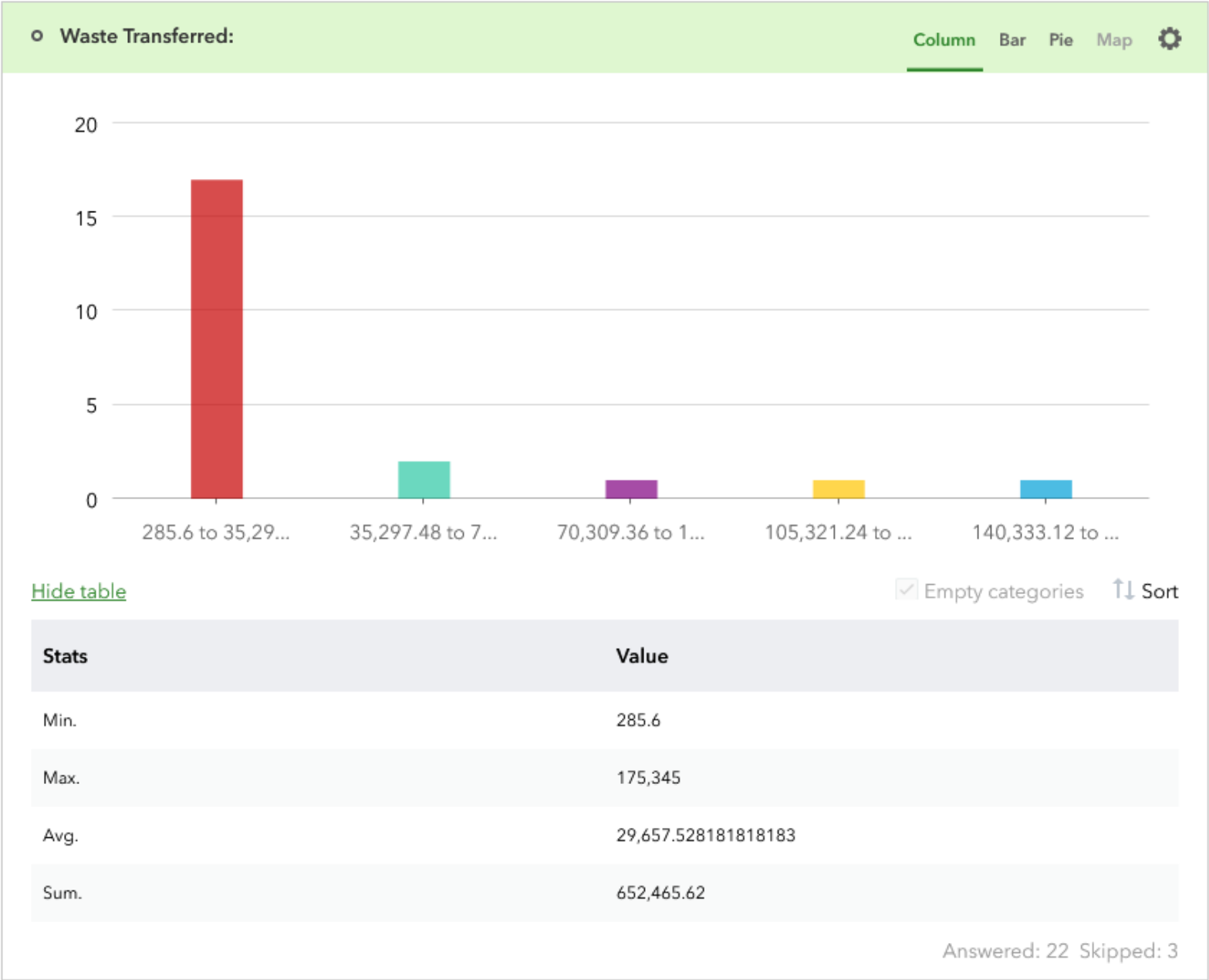
Select all activities that occur at your site:



Answers	Count	Percentage
Composting	3	7.69%
Petroleum Contaminated Soil Processing	3	7.69%
Tire Storage (Tire Storage Facilities only)	3	7.69%
Waste Transfer	23	58.97%
MSW Landfilling	11	28.21%
NMSW Landfilling	4	10.26%
Asbestos Disposal	8	20.51%
Recycling and/or Diversion	32	82.05%
HHW Program	14	35.9%
Other	3	7.69%
None	0	0%

Answered: 38 Skipped: 1

# Capturing Metrics



# SWIFR



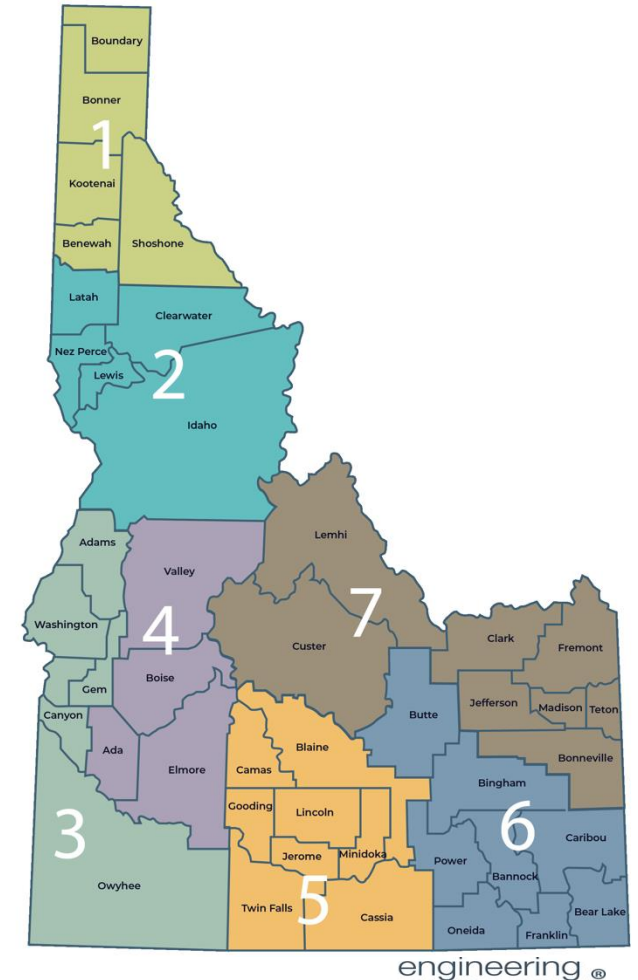
- Establish Materials Management Planning Regions
- Establish Data Collection Program
- Assist Regions with Data Tasks
- Assist Facilities with Outreach & Priority Data Gaps
- Develop Regional Management Plans
- Develop a Statewide Management Plan



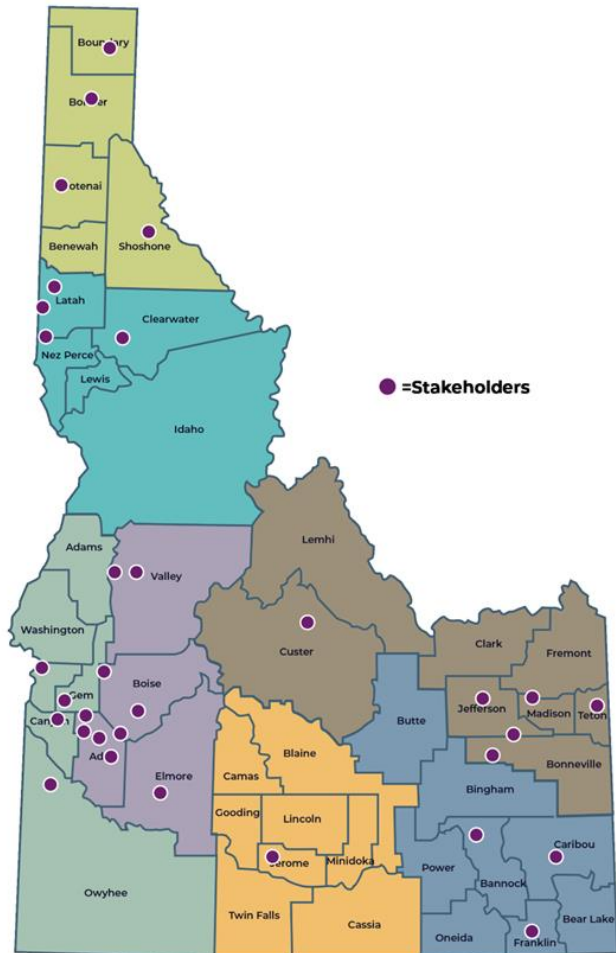


# PUBLIC OUTREACH

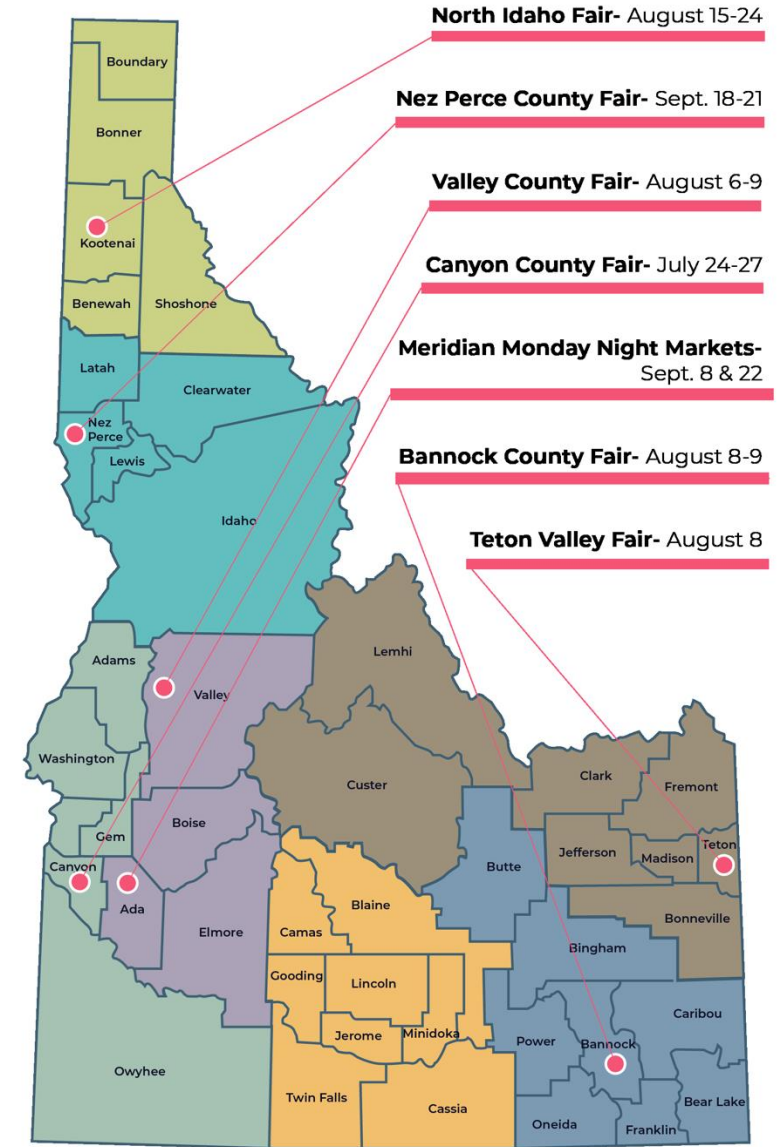
- *ALTA partnered with Great West Engineering to conduct outreach with the public and solid waste stakeholders from around the state.*
  - *Stakeholder Interviews*
  - *Public Outreach Events*



# STAKEHOLDER INTERVIEWS



- ✓ Barriers
- ✓ Improvements
- ✓ Services
- ✓ Existing Educational Materials
- ✓ Big Picture Changes in Solid Waste







# Southwest Health District

(District 3)

## Local Solid Waste / Recycling Information

[swdh.id.gov](http://swdh.id.gov)

Not all facilities accept all types of waste or waste from outside their service area. There also may be some drop-box sites near you. To find out what you can dispose of and where, contact your local solid waste program or municipality.

### Adams County

[co.adams.id.us/departments/waste-management-recycling](http://co.adams.id.us/departments/waste-management-recycling)

1. Goodrich Landfill:
  - (208) 253-4206
  - Open 9-4:30, closed Tuesday, Wednesday, and holidays
2. New Meadows Transfer Station:
  - Open 9-4:30, closed Tuesday, Wednesday, and holidays
3. Council Recycling Center:
  - Open all day every day
4. Jerry's Auto Parts (Council):
  - Accepts used lead acid batteries without charge

### Washington County

[co.washington.id.us/189/Solid-Waste-Disposal](http://co.washington.id.us/189/Solid-Waste-Disposal)

5. Weiser Transfer Site:
  - (208) 549-1284
  - Open Monday-Saturday 8:30-4:45
6. Midvale Transfer Site:
  - (208) 355-5050
  - Open Wednesday 1-5, Thursday-Saturday 12-5

### Gem County

[gemcounty.org/residents/solid\\_waste\\_transfer\\_facility.php](http://gemcounty.org/residents/solid_waste_transfer_facility.php)

7. Transfer Facility:
  - (208) 365-2604
  - Open Monday-Saturday 9-4:30
8. Montour Facility:
  - Open Saturday 8-1

### Payette County

[payettecounty.org/departments/clay-peak-landfill](http://payettecounty.org/departments/clay-peak-landfill)

9. Clay Peak Landfill:
  - (208) 642-6036
  - Monday - Saturday 8-5
  - Sells compost at \$26.5 per cubic yard

### Canyon County

[canyoncounty.id.gov/elected-officials/commissioners/solid-waste/](http://canyoncounty.id.gov/elected-officials/commissioners/solid-waste/)

12. Pickles Butte Sanitary Landfill:
  - (208) 466-7288
  - Monday - Saturday 8-5:30

### Owyhee County

[owyheecounty.net/departments/solid-waste/](http://owyheecounty.net/departments/solid-waste/)

22. Homedale Tipping Station:
  - (208) 250-3352 (manager)
  - Monday, Tuesday 8-6; Friday, Saturday 8:30-6
23. Opaline Tipping Station:
  - (208) 495-9803 (manager)
  - Monday, Friday, Saturday 9-5

Legend:  
 ● Landfill  
 ● Transfer Station  
 ● Specialty Recycling

District 3

## Additional Services

### TVM Recycling

[tvmrecycling.com/](http://tvmrecycling.com/)

13. Nampa:
  - (208) 466-3164
  - Monday-Friday 8-5
14. Caldwell:
  - (208) 459-6246
  - Monday-Friday 8-5
10. Payette:
  - (208) 642-3666
  - Monday-Friday 8-5, Saturday 8-12

### Pacific Steel & Recycling

[pacific-steel.com/location/nampa-recycling/](http://pacific-steel.com/location/nampa-recycling/)

15. Recycling:
  - (208) 466-1105
  - Monday-Friday 8-5
- Steel:
  - (208) 467-2113
  - Monday-Friday 8-5
- E-Cycling:
  - (208) 461-5306

### United Metals

[umrecycling.com/](http://umrecycling.com/)

16. Caldwell:
  - (208) 459-1617
  - Monday-Friday 8-5

### Republic Services

[republicservices.com/municipality/idaho](http://republicservices.com/municipality/idaho)

- Exclusive recycling and waste collection services in Caldwell
- Recycling and waste collection services in Canyon County
- 20. Homedale Transfer Station:
  - Monday-Friday 9-5
- 16. Nampa Recycling Center:
  - (208) 466-9504
  - Monday-Friday 8-5, Saturday 9-2
- 11. Fruitland Recycle Center

### Hardin Sanitation

[hardinsanitation.com/residential/](http://hardinsanitation.com/residential/)

- Recycling and waste collection services in Payette, Canyon, and Washington County

### Vision Recycling

[visionrecycling.com/locations/vision-recycling-nampa/](http://visionrecycling.com/locations/vision-recycling-nampa/)

18. Nampa:
  - (208) 985-4849
  - April 1 - Thanksgiving Mon-Fri 7-6, Sat 7-3
  - Winter Hours: Mon-Fri 8-4

### Tire Reclaim

[tirereclaim.com/locations](http://tirereclaim.com/locations)

19. Caldwell:
  - (208) 957-5130

### Timber Creek Recycling

[timbercreekrecycling.com](http://timbercreekrecycling.com)

20. Nampa:
  - (208) 887-8546
  - Mon-Sat 8-5

### North American Recycling

[northamericanrecycling.com](http://northamericanrecycling.com)

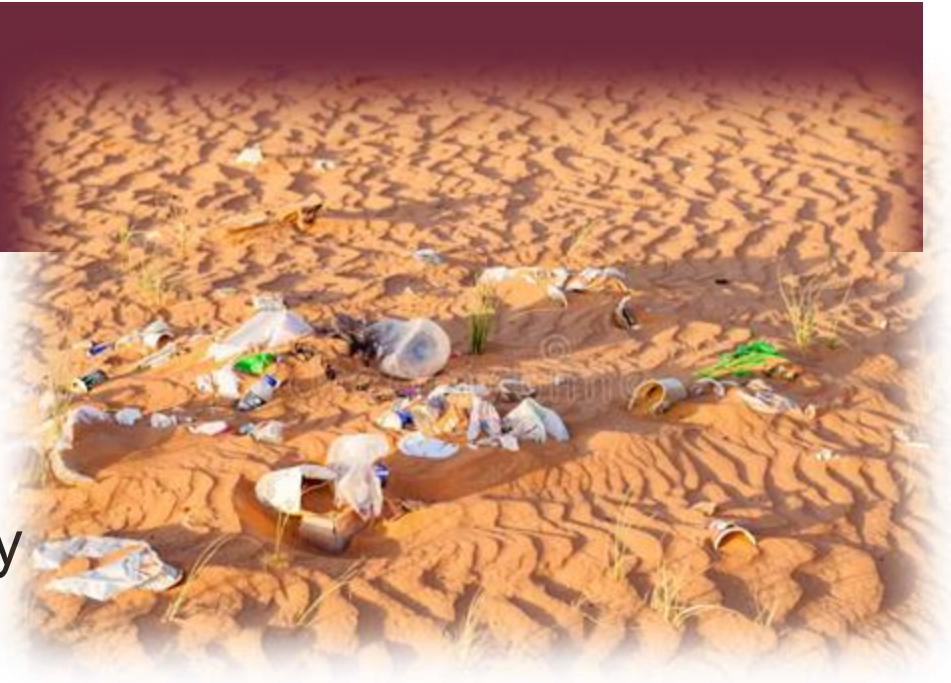
21. Nampa:
  - (208) 461-9696
  - Mon-Fri 8-5



Scan to View  
More Information  
About Programs  
in Your Area

# PRELIMINARY FINDINGS

- Data gaps & inconsistent tracking methods
- Recycling deserts
- Public education and awareness a top priority
- Need for policy changes to support reporting
- Facilities want consistency & clarity



## NEXT STEPS

- Continue to analyze facility data
- Support filling data gaps
- Goal setting workshops
- Development of Regional and Statewide Management Plans





# THANK YOU

**Jon Munkers**

*Principal Scientist*

(208) 336-7080

Jon.munkers@alta-se.com

**Amanda Henderson**

*Solid Waste Rules & Policy Coordinator*

Idaho Department of Environmental Quality

Amanda.Henderson@deq.idaho.gov

(208) 236-6160

**Addie Coffelt**

*Planner*

(208) 759-00790

Acoffelt@greatwesteng.com

**Michelle Langdon, PE**

*President*

Idaho Solid Waste Association

(208) 236-6160

Michelle\_degano@yahoo.com

**Idaho Solid Waste Association**

