

ADAPTATION OF UAS FIELD PROCEDURES - LIVING WITH COVID-19



GIS Day
11/18/2020

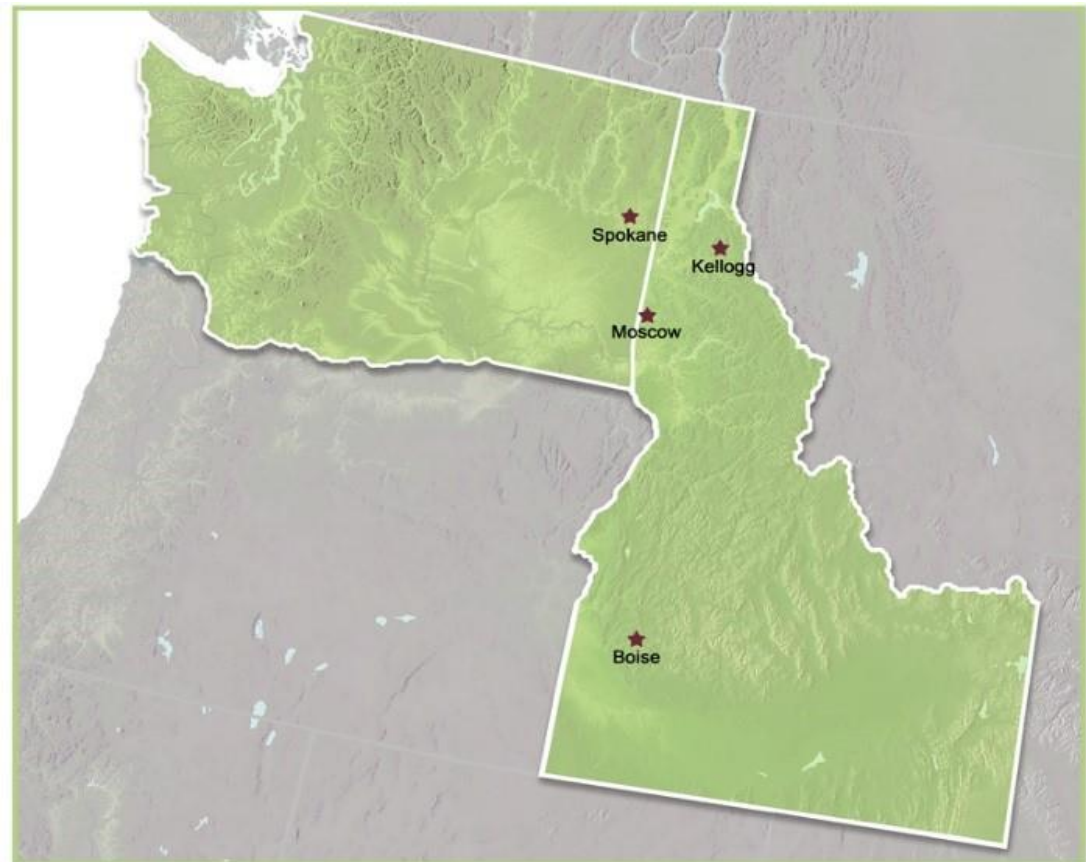
Presented by:
Jennifer Gilley, GISP
GIS Data Analyst

Alta
Science & Engineering, Inc.

ALTA SCIENCE & ENGINEERING, INC.

“Doing the right thing to improve the environment and our communities”

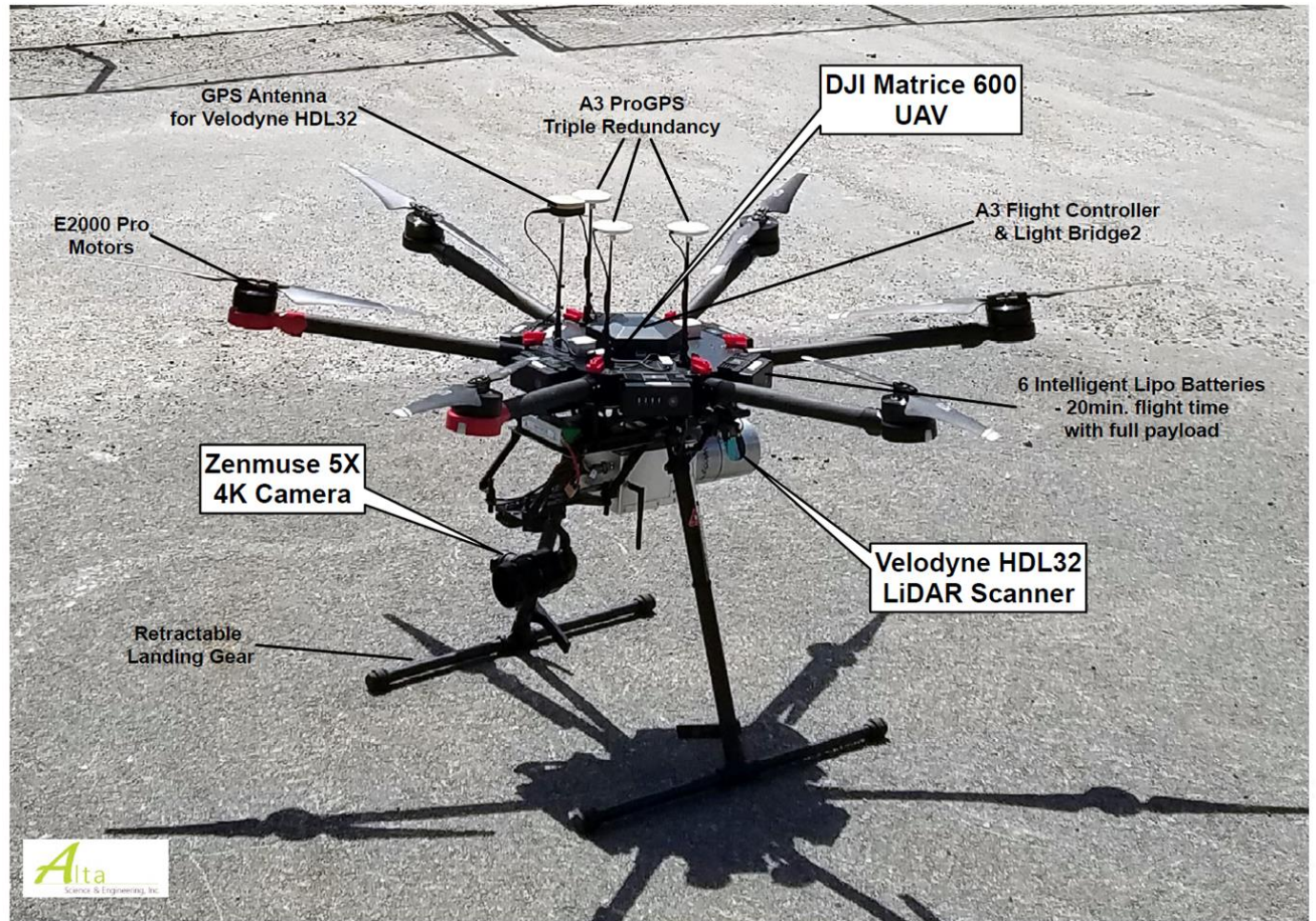
- ❑ Multidisciplinary approach
 - ❖ Engineering
 - ❖ Water Resources
 - ❖ Environmental
 - ❖ Sciences
 - ❖ Natural Systems
 - ❖ Geomatics
- ❑ 45 engineers, scientists, surveyors, technicians, and support staff in Moscow, Kellogg, Boise, and Spokane



g, Inc.

UAS PROGRAM SUMMARY

- Safety
- Site Assessment
- Mission Planning
- Field Preparation
- Field Operations
- Data Management





2020

- *What could go wrong?*

1ST QUARTER

2ND QUARTER ??????

- January – Business as Usual
- February – Rumors start
- March – Shutdown begins
 - 03/03/2020: HR warns that something could be coming
 - 03/15/2020: Infectious Disease Plan implemented
 - 03/20/2020: Alta becomes a remote company in less than a week.
 - 03/25/2020: Job Hazard Analysis (JHA) Worksheets and Essential travel Waivers issued.



A NEW PLAN

- HR and IT Heroes
- Zoom
- Outdoor meetings
- Socially distanced crews
- More PPE



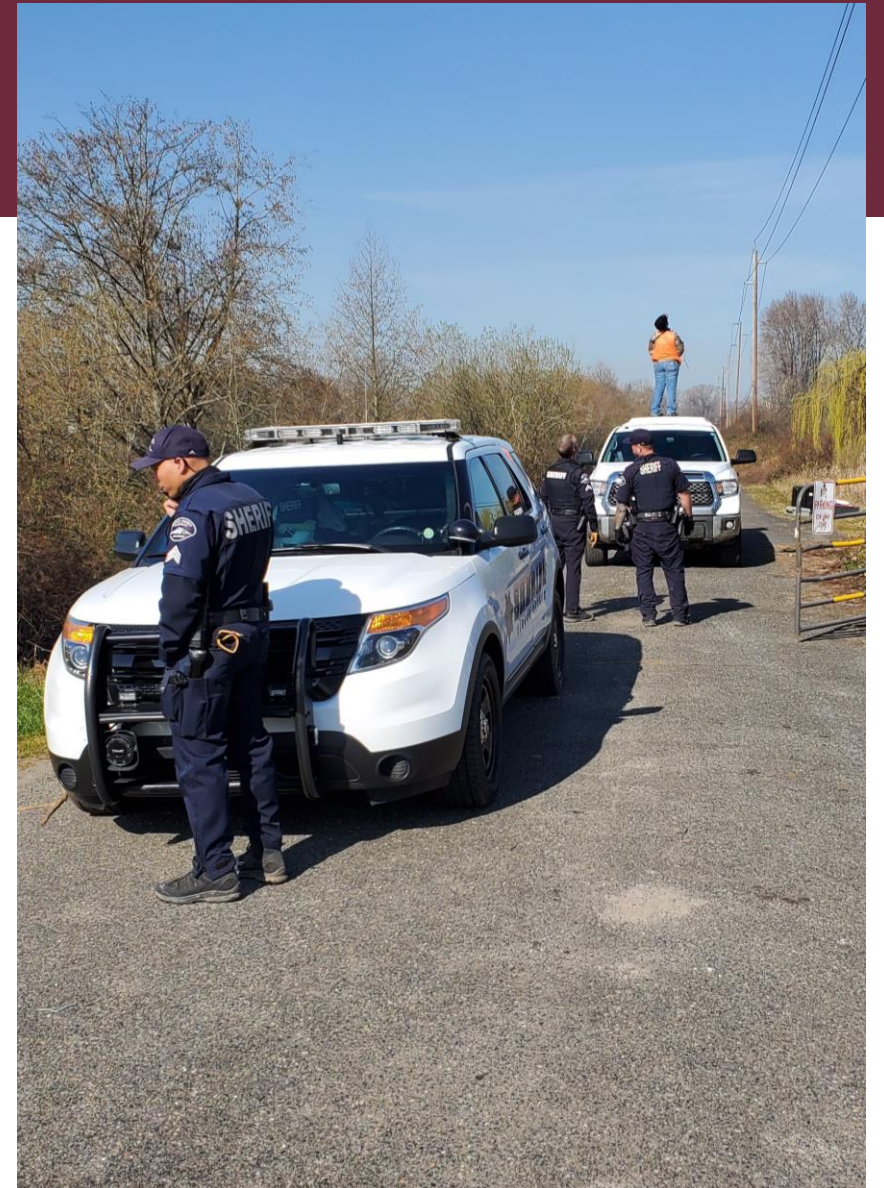
FIELD WORK CHALLENGES

- Not safe to be safe
 - Modifying existing safety habits
- PPE
 - Masks and Gloves
 - So many wipes
- Travel
 - One person per vehicle. Who's walking?
- Distracting Law enforcement

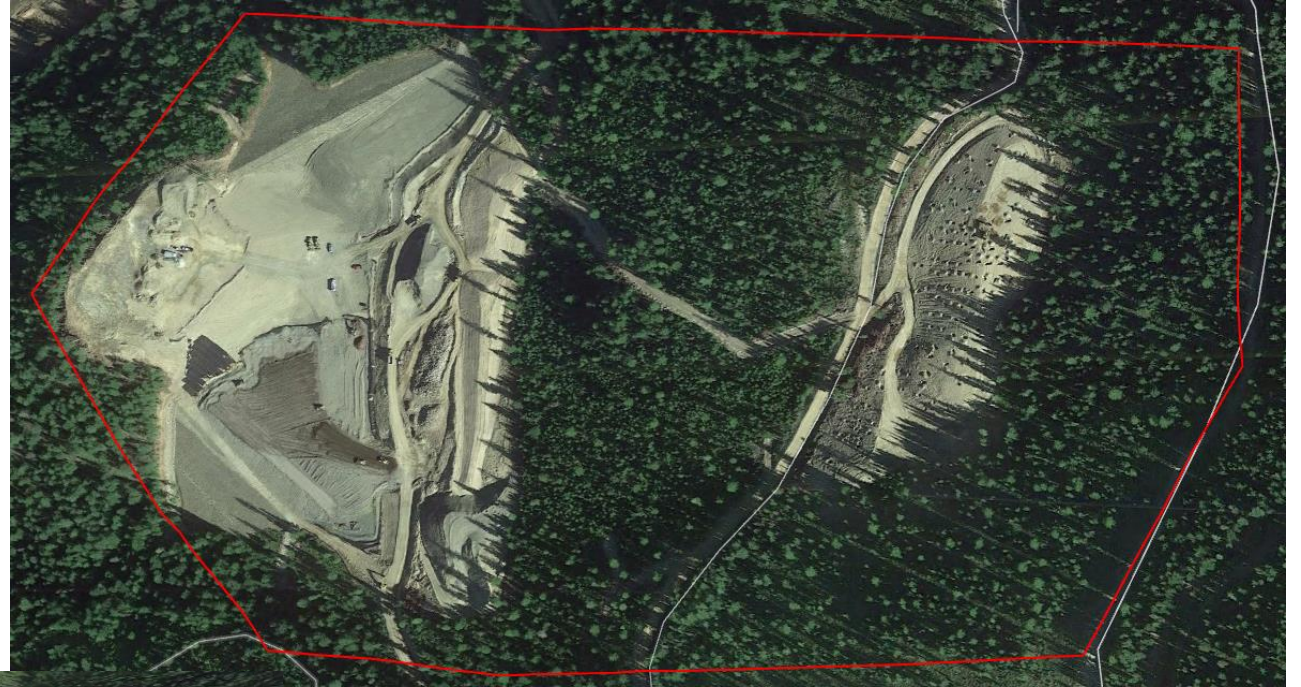


PROJECT 0

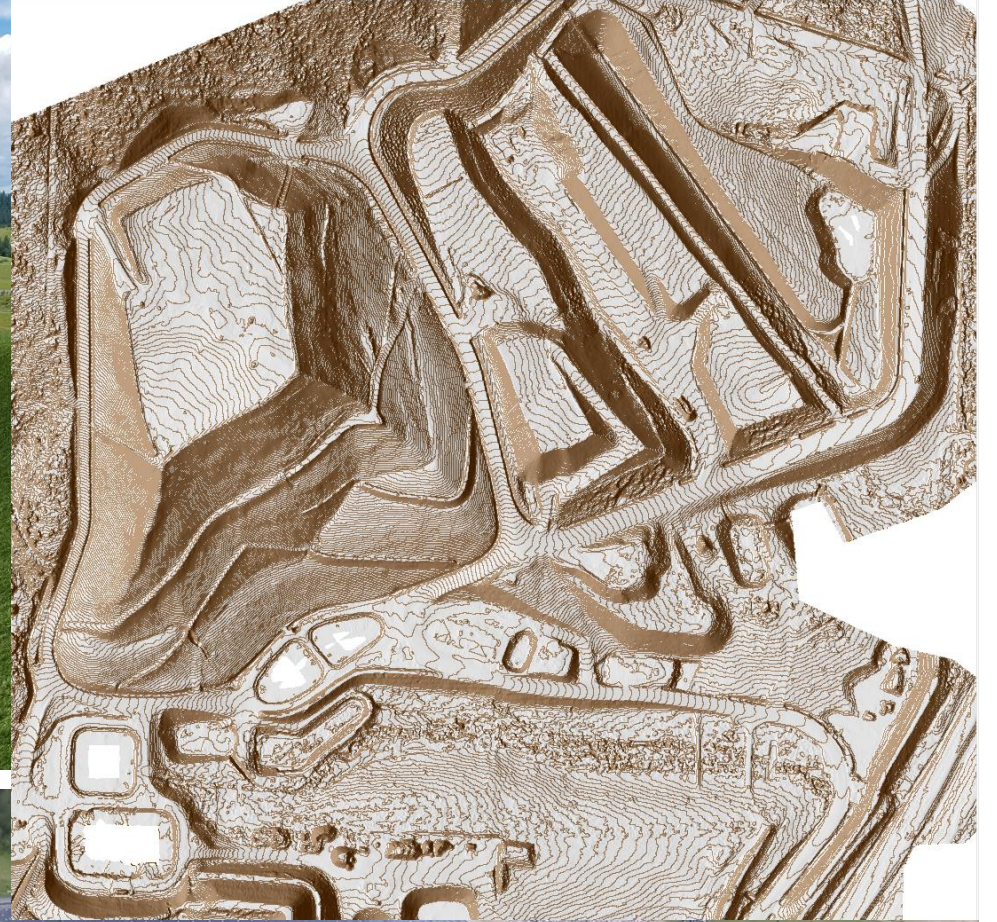
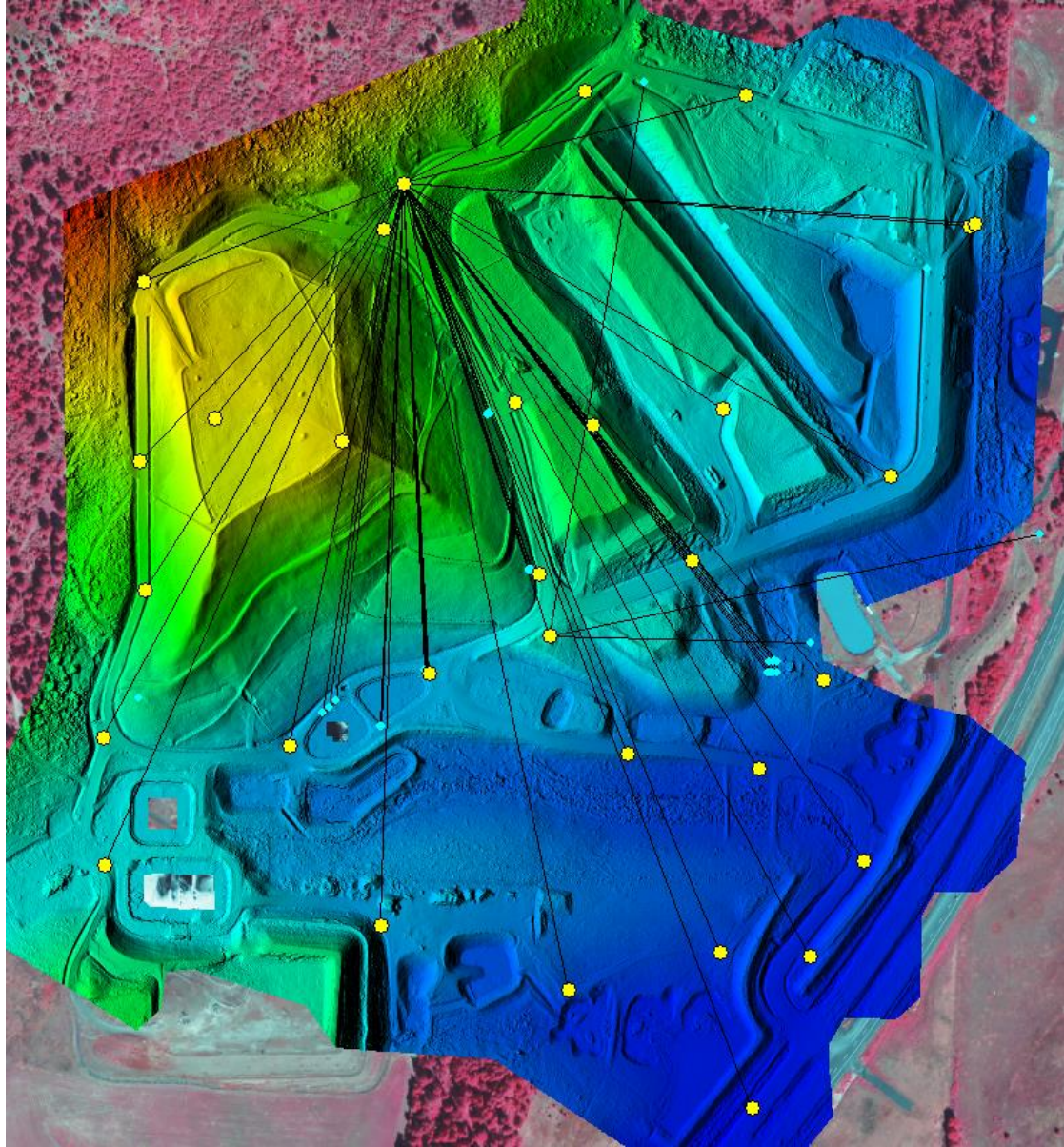
- Working with HR, Client
- Preparing for the worst
- Going in
- Finding the best
- Still had to Quarantine
- No Covid-19 cases
- No arrests



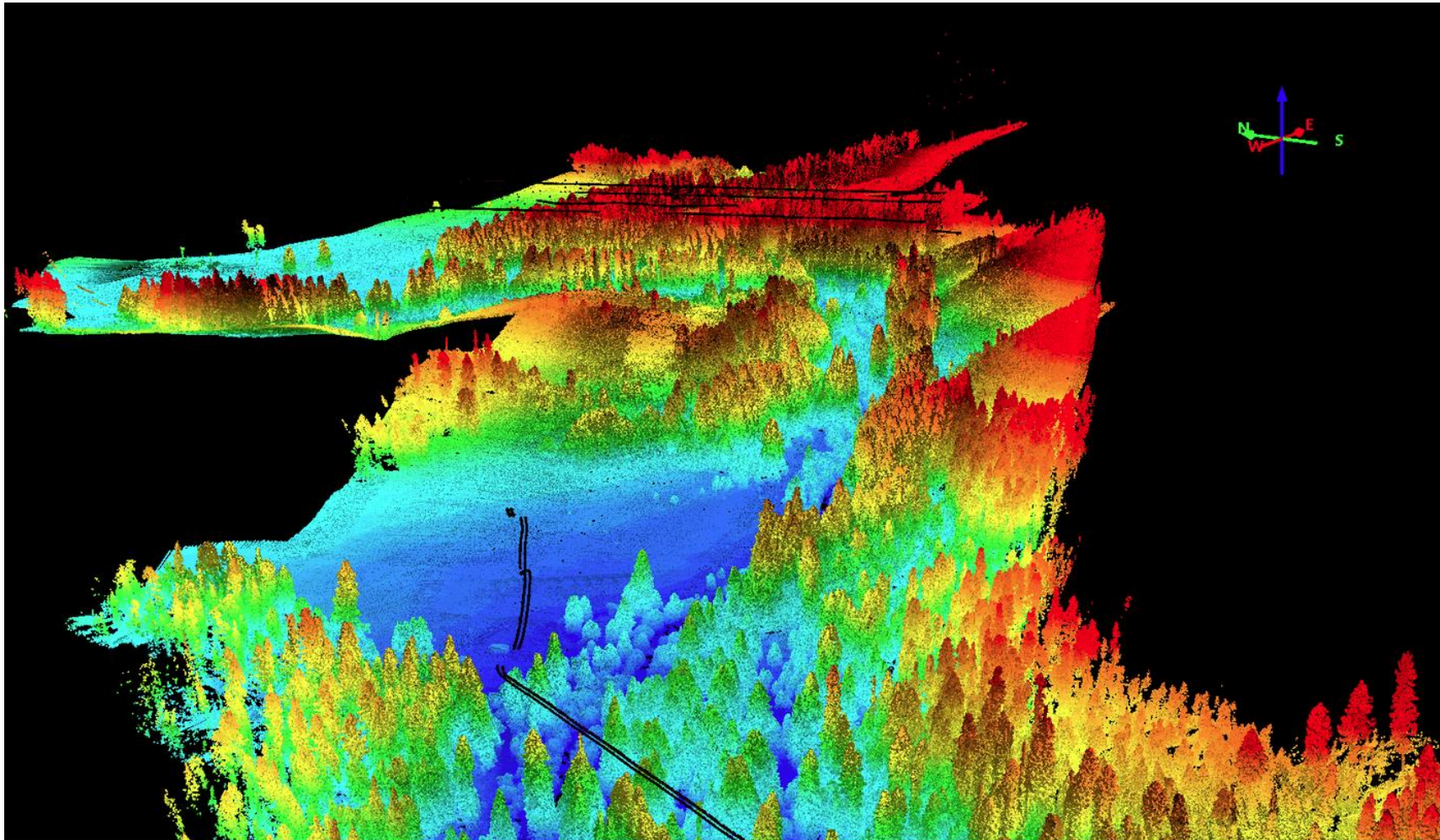
- Google Earth
 - .kmz of site limits
 - Assess the site
 - Terrain
 - Powerlines
 - Access



- Trees
- Active Site – workers, equipment
- Remote – no cellular, no power
- Good Access
- Local Covid Regulations



BE SAFE AND GATHER GLORIOUS DATA!





QUESTIONS?