

THE WILD TIMES



IDAHO CHAPTER THE WILDLIFE SOCIETY



Issue 99:1

February 8, 1998

RARE ANIMAL WORKSHOP & WILDLIFE SOCIETY MEETING UPDATE

The annual meeting of the Idaho Chapter of the Wildlife Society will be preceded by a workshop on **The Status And Management Classification Of Idaho Native Fauna** (aka Rare Animal Workshop), organized by Chuck Harris, IDFG. This workshop will be held on Wednesday, March 3rd in the Grove Hotel (downtown Boise), the Evergreen Room. A preliminary agenda follows. *Please plan to attend.*

8:00 - 8:05	Opening Comments	Toni Holthuijzen, Idaho Power Chuck Harris
8:05 - 9:00	Priority Bird Species and Habitats; Important Bird Areas; Bird Conservation Plans	Sherry Ritter, Idaho PIF
9:00 - 10:00	Status of Reptiles and Amphibians	Chuck Peterson, ISU Ted Koch, FWS
10:00 - 10:30	Break	
10:30 - 12:00	Status of Bats Western Bat Working Group: Regional Regional Priority Matrix	Barry Keller, ISU Lyle Lewis, BLM
12:00 - 1:30	Lunch	
1:30 -- 3:00	Mammalian Species of Special Concern Review	Chuck Harris, IDFG
3:00 - 3:30	Break	
3:30 - 4:00	Rare Species Lists: Confusion, Consensus, Consolidation; or are Agencies sensitive and concerned about watching special species?	Chuck Harris, IDFG
4:00 - 5:00	An approach to determine Idaho Species of Special Concern (can we get our act together on a process)	Jon Haufler, Boise Cascade Chuck Harris, IDFG
	USFS Sensitive Species Criteria/List Update	Mr./Ms. FS Biologist

The Idaho Chapter of The Wildlife Society meeting will start on Thursday, March 4th in conjunction with The American Fisheries Society. Dr. Chris Frissell, Research Associate Professor, the University of Montana, will deliver the keynote address. His presentation will focus on the effects of mainstem dams on anadromous fish, riparian systems, and associated wildlife. This will be followed by a series of case-specific papers on riparian issues, related to reptiles/amphibians, birds, and mammals. The social will be held in conjunction with the AFS on Friday evening, March 5th, and promises to be a great event with a live auction and a large silent auction. The general paper sessions will either be concluded on Friday afternoon or Saturday morning, depending on the number of abstracts submitted. **THERE IS STILL TIME TO SUBMIT YOUR ABSTRACT. I WILL TRY TO ACCOMMODATE LATE SUBMITTALS.**

**Washington Chapter of The Wildlife Society, Annual Meeting
March 30 - April 2, 1999
Wenatchee, Washington**

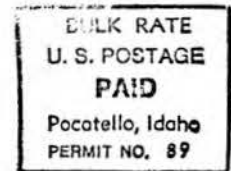
The Washington Chapter of The Wildlife Society will hold its 1999 annual meeting and workshops in Wenatchee, Washington and would like to invite Idaho Chapter Members. The meeting and workshops promise to be exciting, informative, and affordable. We have an amazing number of distinguished and talented speakers for our invited papers, plenary session, and banquet. This year we are beginning with 4 workshops that have been designed to meet the needs of the diversity of people the Chapter serves. You are sure to find at least one of the workshops appealing. The following plenary session will have a dynamite list of inspiring and thought provoking speakers, including Jolene Unsoeld (former Western Washington Democrat). On Thursday, April 4th, we will have our banquet. For the main course we offer the insights of a dynamic and sometime controversial personality, Randall O'Toole, from the Thoreau Institute. Finally, on Friday afternoon we offer a choice of field trip options which deal with current and important wildlife conservation issues. We are also providing opportunities for students in order to encourage their attendance. We will be hosting a mentoring session, initiating a session devoted solely to student papers, and will give an award for the best student presentation. Please come join us in Wenatchee for the learning experience of a lifetime!!

Session Themes:

Transportation Corridors and Habitat Connectivity
Recreation and Secondary Road Effects on Wildlife
Noxious Weeds and Wildlife
Human Wildlife Conflicts: the effects of a growing human population and conflicts on the rural/urban interface.
Forest Carnivore Ecology and Management
Senior Thesis Research Papers
Contributed Papers

For Additional Information Contact: Ann Sprague, PO Box 453, Twisp, WA 98856, (509) 997-2131, sprague@methow.com

*Idaho Chapter The Wildlife Society
1345 Barton Road
Pocatello, ID 83201*



CHARLES E. HARRIS
IDAHO DEPT FISH & GAME
600 S. WALNUT
P. O. BOX 25
BOISE, ID 83707

FEB 12 1999