



## In this Issue:

<b>President's Message</b>	<b>Wildlife Education &amp; Scholarships</b>
	<b>Loss of a Friend</b>
<b>Editor's Corner</b>	<b>Get Connected!</b>
<b>Feature Articles</b>	<b>IPARC/CARA Update</b>
<b>Regional Reports</b>	<b>No Reports</b>
<b>Committee Updates</b>	<b>Help Wanted!</b>
<b>Research Update</b>	<b>No Report</b>
<b>Upcoming Meetings</b>	<b>State Chapter Meeting</b>
	<b>Northwest Section Meeting</b>

### Officers

<b>Chuck Harris</b>	<b>President</b>	<b>334-2920</b>
<b>Toni Holthuijzen</b>	<b>Vice President</b>	<b>388-2352</b>
<b>Michelle Commons</b>	<b>Treasurer</b>	<b>324-4359</b>
<b>Anna Owsiak</b>	<b>Secretary</b>	<b>756-2271</b>
<b>Newsletter Editor:</b>	<b>Joe Butsick</b>	<b>768-2515 or</b>
		<b>756-3813</b>

*Printing, Layout & Design: Digital Design & Printing, Salmon, Idaho*

**Next Newsletter Submissions due March 15**



## Presidents Message

On 8 November, I had the privilege of attending the Boise State University Scholar -Donor Luncheon for Academic Excellence on behalf of the Idaho Chapter of The Wildlife Society. The luncheon brings together those individuals/organizations donating to scholarship funds at Boise State University with those students who are the current recipients of the respective scholarships. The Idaho Chapter sponsors the Richard Olenorff scholarship at Boise State. We also sponsor the Norenberg /Meiners scholarship at the University of Idaho, and the Edson Fichter scholarship at Idaho State University. These are an excellent and most fitting way to remember and honor distinguished past members of our Chapter and to support the future of our profession.

Lynda Leppert, the 2000 recipient of the Richard Olenorff scholarship, joined me at the BSU luncheon. Lynda came to BSU after having worked many years as a veterinary lab technician with a love of blood. I have seen many wildlife graduate students passionate about the animals they study, but never one so passionate about all the things you can discover about an animal by looking at its blood. I quickly became the student and she the teacher. Lynda is conducting research on *Heterophil: Lymphocyte Ratio as a Reliable Indicator of Stress and Circadian Leukocyte Distribution in Three Species of Owls*. I asked Lynda to provide a brief summary of her research proposal for the Chapter members (I removed the numerous citations; if you want them I can provide them).

Birds annually face numerous demands on their energy reserves. For example, migrants move through unfamiliar, inhospitable habitat with limited opportunities to forage; similarly, breeding birds must forage for their young as well as for themselves. Only birds in adequate physical condition migrate or breed successfully. The ratio of body mass to tarsus length is an accepted index of body condition and indirectly reflects metabolic status and energy reserves. Another indicator of physical condition is the plasma level of the adrenal steroid hormone, corticosterone.

Corticosterone is quite variable over time and may reflect the presence of acute stressors, rather than long-term stressors. A more reliable indicator of body condition may be H:L ratio, but its accuracy has largely been untested in free-living birds. I propose

to test the hypothesis that H:L ratios are more reliable indicators of long-term stress (condition) than is plasma corticosterone level.

Studies have shown that the number of circulating leukocytes varies throughout the day. This may reflect a circadian rhythmicity in leukocyte distribution. For example, in great tits lower leukocyte numbers were found during active periods and higher numbers during inactive periods. One possible explanation is that activity level influences the distribution of circulating leukocytes. Another explanation is that the circadian pattern of hormone release influences the distribution of circulating leukocytes. I propose to test the hypothesis that there is a circadian rhythm to leukocyte distribution influenced by activity.

I will study three species of owls sampled during different seasons. I will sample northern saw-whet owls (*Aegolius acadicus*) and flammulated owls (*Otus flammeolus*) during fall migration at the Idaho Bird Observatory raptor migration-monitoring site on Lucky Peak, east of Boise. There were over 900 owls netted at this site last year; so obtaining an adequate sample size for statistical analysis should not be a problem. Once monthly throughout the year, I will sample adult western screech owls (*O. kennicottii*) from approximately 70 established nest boxes along the Snake River. This is considered a resident population in the state of Idaho. Each owl will be sexed, measured, banded, and bled. From each sample, I will make two blood smears and will remove the plasma for corticosterone analysis. Because these owl species are difficult to sex morphometrically, DNA sexing analysis will be done on the remaining red blood cells. The H:L ratio will be determined from each blood smear. Corticosterone will be compared to the H:L ratio. I will determine leukocyte distributions using the same blood smears mentioned above. The time of sampling will be recorded and classified into an early or late activity period.

It was a real pleasure to spend a couple hours with other scholarship sponsors and their scholarship recipients and to be reminded how important our support is to their education. And on the subject of education, if you have not taken the time to peruse the fall issue of The Wildlife Society Bulletin, please do so. It contains a special coverage on *The Future of Wildlife Education*. There are 10 papers covering a broad range of topics from undergraduate and graduate curricula, to new distance learning opportunities, to a philosophical piece by Jack Ward Thomas and Daniel H. Pletscher on the convergence of ecology, conservation biology, and wildlife biology. All are excellent reading and provide stimulating thought regarding students coming into the wildlife profession and where we may be going in the future.



### ***Special Message: A Friend and Colleague is Gone***

Michael Gratson, Idaho Department of Fish and Game senior wildlife research biologist, was killed in a helicopter crash along with pilot Mike Haygens on Thursday 29 December while conducting mountain lion surveys along the Lochsa River near Lowell. The surveys were part of a complex elk/habitat/predation study to address the underlying mechanisms in the decline of the Lochsa elk herd. Idaho Fish and Game wildlife technician Matt Lucia survived the crash and is recovering at home. Michael was an active member of the Idaho Chapter and had served as our newsletter editor. Michael received his BS and MS degrees in wildlife biology from the University of Wisconsin Stevens Point, and his PhD in zoology from the University of Victoria. His sharp intellect and wit, and his dedication to the wildlife resources and to being the best scientist he could be will be greatly missed by his friends and colleagues. Memorial Services were held 4 January in Lewiston. Michael's family has requested that donations be made to the Michael Gratson Scholarship Fund. Donations can be sent to: Idaho Department of Fish and Game, Clearwater Regional Office, 1540 Warner Avenue, Lewiston, ID 83501. The Idaho Chapter will also be contributing a portion of the funds raised at this year's auction/raffle to the scholarship fund.

### ***Editor's Corner***

For the record, or specifically for our records we need to have every member's e-mail address to update our newsletter mailing list. We would like to get as many members as possible linked to the electronic highway to cut down on newsletter mailing expenses. Send your email addresses to my e-mail address following this section. Thank you.

We will continue to send hard copies to those without e-mail service.

Also, the Chapter will be producing a new membership directory after the March meeting. If you are not going to be at the meeting be sure to let Michelle Commons know your current address, phone, fax, and e-mail address. She can be reached at [mcommons@idfg.state.id.us](mailto:mcommons@idfg.state.id.us).

Please send newsletter correspondence to: Joseph Butsick, 19 havens Lane, Salmon, Idaho 83467; Fax: 208-768-2501, phone- 768-2515 (home: 208-756-3813); email: [jonabrem@salmoninternet.com](mailto:jonabrem@salmoninternet.com) or at work at [mailto:butsick@fs.fed.us](mailto:mailto:butsick@fs.fed.us)

## ***Feature Articles***

### **Idaho Partners in Amphibian and Reptile Conservation (IPARC)**

In recent years, populations of amphibians and reptiles (herps) have declined significantly in North America and throughout the world. A coordinated, cooperative program of research, monitoring, management, public policy, and education is needed to identify vulnerable species and habitats for prudent, workable conservation initiatives and to develop public appreciation for the environmental welfare of all species of herps.

In June 1999, an organizational meeting for Partners in Amphibian and Reptile Conservation (PARC) was held in Atlanta, Georgia, with representatives from 170 different universities, museums and nature centers, state wildlife departments, federal agencies, conservation organizations, research laboratories, forest products companies and other industries, and pet trade organizations. The PARC mission is to conserve amphibians, reptiles, and their habitats as integral parts of our ecosystem and culture through proactive and coordinated public/private partnerships. PARC's 5 priority conservation needs are: (1) educate the public about herpetofauna and conservation; (2) establish a dynamic database on the ecology and habitat requirements of amphibians and reptiles; (3) standardize data collection and inventory techniques; (4) create a user-friendly database of all management information and existing policies on herpetofauna; and (5) establish a PARC fellowship and internship program.

### **Idaho Partners in Amphibian and Reptile Conservation (IPARC)**

In recent years, populations of amphibians and reptiles (herps) have declined significantly in North America and throughout the world. A coordinated, cooperative program of research, monitoring, management, public policy, and education is needed to identify vulnerable species and habitats for prudent, workable conservation initiatives and to develop public appreciation for the environmental welfare of all species of herps.

In June 1999, an organizational meeting for Partners in Amphibian and Reptile Conservation (PARC) was held in Atlanta, Georgia, with representatives from 170 different universities, museums and nature centers, state wildlife departments, federal agencies, conservation organizations, research laboratories, forest products companies and other industries, and pet trade organizations. The PARC mission is to conserve amphibians, reptiles, and their habitats as integral parts of our



ecosystem and culture through proactive and coordinated public/private partnerships. PARC's 5 priority conservation needs are: (1) educate the public about herpetofauna and conservation; (2) establish a dynamic database on the ecology and habitat requirements of amphibians and reptiles; (3) standardize data collection and inventory techniques; (4) create a user-friendly database of all management information and existing policies on herpetofauna; and (5) establish a PARC fellowship and internship program.

Organizationally, PARC is modeled after Partners in Flight (PIF). A national coalition that helps coordinate and facilitate regional and state working groups. On 17 November, IPARC held its organizational meeting (Idaho is only the second state to have held such a meeting). In attendance were representatives from Boise State University, Idaho State University, University of Idaho, Northwest Nazarene University, Idaho Department of Fish and Game, Idaho Department of Parks and Recreation, Idaho Transportation Department, Fish and Wildlife Service, Forest Service, Bureau of Land Management, National Park Service, Boise Cascade Corporation, Idaho Power, Science Applications International Corporation, URS Corporation, and the Idaho Herpetological Society. Dr. Mike Lannoo, Indiana University (U.S. Coordinator for the Declining Amphibians Population Task Force) gave a presentation on the status of amphibians in the United States followed by several reports on amphibian research projects being conducted around Idaho. The most important portion of the meeting will consist of short presentations by the attendees concerning their organization's involvement in herpetological conservation and the development of a list of priorities for conserving amphibians and reptiles in Idaho.

IPARC is off to a great start. There will be another IPARC meeting in conjunction with the Idaho Chapter TWS meeting, so check the next newsletter or the web site for details. IPARC is open to everyone and anyone with an interest in herp conservation. To learn more about PARC see the web site at <http://www.parcplace.org/> Information on IPARC will be on Chuck Peterson's home page <http://www.isu.edu/~petechar>

### **CARA: WHAT HAPPENED MAN!!**

In the grand words of Lyndon Baines Johnson, "Son, in politics you've got to learn that overnight chicken shit can turn into chicken salad."

Crude, but true. The reverse might also be true in the case of CARA, but as you will see we did not do too bad. We went for the gold and got the bronze medal instead. A quick recap of events in case you have lost track of all that has happened this year, and especially the past few weeks. The Conservation and Reinvestment Act (CARA, HR 701) passed the House 11 May on a 315 to 102 vote. This legislation provided \$2.8 billion per year from off shore oil and

gas leases for 15 years for wildlife, parks, coastal protection, and a variety of other conservation programs. Wildlife Conservation and Restoration (Title III) would have received \$350 million per year via the established Federal Aid to Wildlife Restoration Program (P-R), with IDFG's share being about \$3.9 million per year (plus our 25% match).

On 25 July, the Senate Energy and Natural Resource Committee voted 13 to 7 to report CARA to the full Senate. The Senate version of CARA had a few changes from HR 701, but wildlife would still have received \$350 million per year with IDFG's annual share being about \$3.7 million. Shortly thereafter Congress went home for their August recess and reconvened after Labor Day with the expectation of adjourning the session by 22 September to go home and campaign for the November election. All efforts focused on getting CARA brought to the floor of the Senate for a vote (63 Senators had signed a letter to the Senate leadership indicating their support for CARA). With only 3 weeks to get 11 of 13 appropriations bills passed, a big tax cut bill, and other major legislation still looming, there was great potential for CARA to get lost in the shuffle. Options were: (1) CARA would be voted on by the full Senate; (2) CARA would be attached as a rider on to one of the appropriations bills; or (3) CARA would become part of a large omnibus bill passed at the end of the session.

A couple weeks passed with no clear indication of which avenue CARA would take. During the week of 25 September it became apparent that some form of CARA was going to be attached to the Interior Appropriations bill. It also became apparent that members of the Appropriations Committee were attempting to weaken CARA by reducing the amount of funding, reducing the time period, and keeping control of the funding (no automatic appropriation). On 29 September the Interior appropriations conference report was filed (dubbed CARA lite), and it was not good for wildlife or any of the other original CARA titles. The following week, the bill was passed by the House and Senate and signed by President Clinton.

The CARA portion of the Interior Appropriations bill (technically termed Title VIII -- Land Conservation, Preservation and Infrastructure Improvement program rather than CARA lite) provides \$1.2 billion for FY01 in 6 program categories. State wildlife funding (\$50 million for FWS - State Wildlife Grants) is in the program category "State and Other Conservation Programs," that provides a combined total of \$300 million in FY01.

The following is a summary of the state wildlife funding provided by the International Association of Fish and Wildlife Agencies. There is actually very little to summarize, because there is much work yet to be done by the Fish and Wildlife Service before the funds can be dispersed.

1. Funding for State Fish and Wildlife Agencies in the Land Conservation, Preservation and Infrastructure Improvement pro-



gram is \$50 million in FY01 and is part of a competitive grants program that will be administered by the Fish and Wildlife Service.

2. Funds in the Land Conservation, Preservation and Infrastructure Improvement program can potentially ramp up over the following 5 fiscal years, but there is no assurance of even \$50 million for wildlife in future years. The report language says: "*The program is not mandatory and does not guarantee annual appropriations.*" There is discussion of fences and caps but the caps are just that: maximums, and there is no floor or minimum for any program. The bill merely contains \$160 million each year in authorizations that the Appropriations Committees can spend or not spend for any program they desire.

3. The mechanism for States to use the initial \$50 million is so complicated that it is doubtful that any state would get funds for anything, except possibly for planning, in the foreseeable future. The states are required to develop wildlife conservation plans to "*meet requirements that are established by the Service.*" The Service "*may*" use a portion of the \$50 million for grants to states to prepare the plans and if the State has developed the required plan or commits to develop the plan by a mutually agreed date certain then the Service can grant money to the States under a cost-shared, competitively-awarded, project-based program. The service's proposal must be presented to the "*House and Senate Committees on Appropriations for review and approval prior to the use of any funds for these grants. The funds should not be distributed on a formula basis and every effort should be made to leverage Federal funding to the maximum extent possible.*"

4. It is estimated that it would take a state about 3 years to develop a plan to meet the "*requirements that are established by the Service.*" Each plan is to "*provide for the conservation of the State's full array of wildlife and their habitats, with emphasis placed on those species conservation efforts that are most underfunded and have the greatest conservation need.*" The Service is prohibited from providing a grant "*to any state unless the State has, or commits to develop by a mutually agreed date certain, the required plan.*" At this point the State can request a competitively awarded, project-based grant. The net effect of all these requirements is the promise of some federal funds for specific projects as determined by the Fish and Wildlife service about 3-4 years from now! It has taken the Service more than 2 years to develop the requirements for a \$10 million competitive grants program for nontrailerable boats contained in the last amendments to the Sport Fish Restoration Act. This provision is immensely more complicated.

In spite of what appeared to be a total defeat for the

CARA coalition in the Interior Appropriations bill, this was a good civics lesson and a reminder of just how powerful members of the appropriations committees are. While some of the coalition packed their bags and went home to plan next year's strategy, the wildlife coalition refused to give up. There were still some complex procedural avenues open (tricks only master parliamentarians know) for getting something better for wildlife, so with the help of some very supportive Congressmen and Senators, the fight was on. It lasted for almost 3 weeks, but on 27 October the final appropriations bill for Commerce, Justice, and States (CJS) was passed by the House and Senate that included more funding for wildlife. There is, however, a veto threat hanging over this bill by President Clinton because of differences regarding immigration policy, tobacco litigation, and FCC licensing of new FM radio stations, so it's not completely settled yet. Should he veto the bill and send it back to Congress, the only provisions that Congress is expected to revisit would be those at issue. Because the wildlife program language and money have been agreed to by both the House and Senate and the White House, there is no need to reopen the discussion on our wildlife program.

CJS is fairly good news for state wildlife agencies. Basically, this is an additional 1-year \$50 million appropriation for wildlife conservation within the FY01 CJS appropriations measure. The authorizing language attached to CJS to amend the P-R legislation does not exactly track the House-passed CARA's wildlife Title III, but it is very similar. While it is not everything we had hoped for, it is a good, reasonable, encouraging start and an adequate marker for future improvements. Below are some points as to what this language will do:

- \* 1-year appropriation of \$50 million for wildlife conservation, recreation (capped at 10% of a state's allocation), and education, but no money for enforcement because this activity is not allowed under P-R.

- \* Amendments to the Federal Aid to Wildlife Restoration Act (Pittman-Robertson) to create the new wildlife conservation program.

- \* Provides funds directly to the states based upon a formula (1/3 land area and 2/3 population) with a 1% floor and 5% ceiling (IDFG will get about \$560,000 plus our 25% match; as with other P-R funds we can spread this out over 2 years if we need to).

- \* Includes many of the same definitions as found within the House-passed CARA Title III.

- \* Provides a priority for funding for species with the greatest conservation need as defined by the State wildlife conservation and restoration program.

- \* Provides up to 3% of funds to be used to administer the new program.

- \* Includes the wildlife conservation strategy as part of a state's



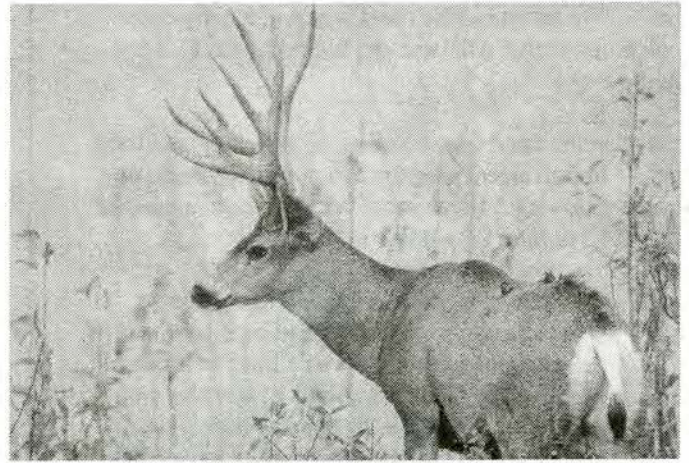
plan, as some groups had requested (a change from the House-passed CARA).

\* Provides that funds for wildlife education may not be used for anti-hunting efforts.

The exact language for CJS can be found in two parts (wildlife begins on page 41 of the second document and goes through page 57) at: <http://www.house.gov/rules/cjs1.pdf> and <http://www.house.gov/rules/cjs2.pdf>

We (the CARA coalition) can not look at these two appropriations riders as a defeat. Great progress was made in the past year in building a strong and dedicated coalition, making key legislative contacts and congressional allies, raising awareness of the need for state wildlife funding, and sending a loud message that we will be back next year seeking elevated and permanent funding because wildlife conservation programs can not operate on year to year appropriations, we can not build trust and conservation agreements with private landowners on uncertain funding, and we can not address the long-term issues of declining species and habitats with minimum dollars.

We will provide more details in a second memo about what we think will be required in the comprehensive plan and wildlife conservation strategy in order to obtain funding from the Wildlife Conservation and Restoration account and how we as a Department will go about pulling the plan and strategy together. If you have any questions, contact Wayne



## ***Committee Updates***

### **Committee Chairs Needed:**

The success of our Chapter, and TWS as a whole, is based upon the work of dedicated volunteers. The work of TWS cannot get done by the small paid staff in Bethesda, Maryland, or the executive boards of the Chapters and Sections. We need you to volunteer to be chairs and members of the standing committees of the Chapter. Toni, Michelle, Anna, and I cannot do it all.

Please consider volunteering for one of the committees below. Contact the committee chairperson or Chuck if you have an interest in chairing or working on any of the following committees.

### **Conservation Affairs Committee:**

Gregg Servheen is chair and could use some members. [gservee@idfg.state.id.us](mailto:gservee@idfg.state.id.us) ).

### **Nominations-Election Committee:**

Don Kemner has retired (thanks for all your work Don), and we need a chair and members by 1 October 2001 to select a new slate of candidates to run for office. There will be no problems with ballots, chad, etc. If we have a tie vote, like last year's secretary position, we settle it at the business meeting with the flip of a coin.

### **Awards Committee:**

Awards: Kerry Reese is chair and could use some assistance in selecting the Professional Wildlifer Award and Special Recognition Award. Please send your nominations to Kerry ASAP. [kreese@uidaho.edu](mailto:kreese@uidaho.edu)

Ted Trueblood Communications Award: Alan Dohmen has stepped down after many years of pulling together a group of professional biologists and students to evaluate the presentations and posters and each year's meeting.



Thanks Alan for all your hard work. Now someone else needs to step forward if we wish to continue honoring the best student and professional papers at our annual meeting.

**Kerry Reese, Chairperson •**

**Program:** Toni and Chuck could use some help with the many facets of the Boise meeting.

**Education and Information:** vacant

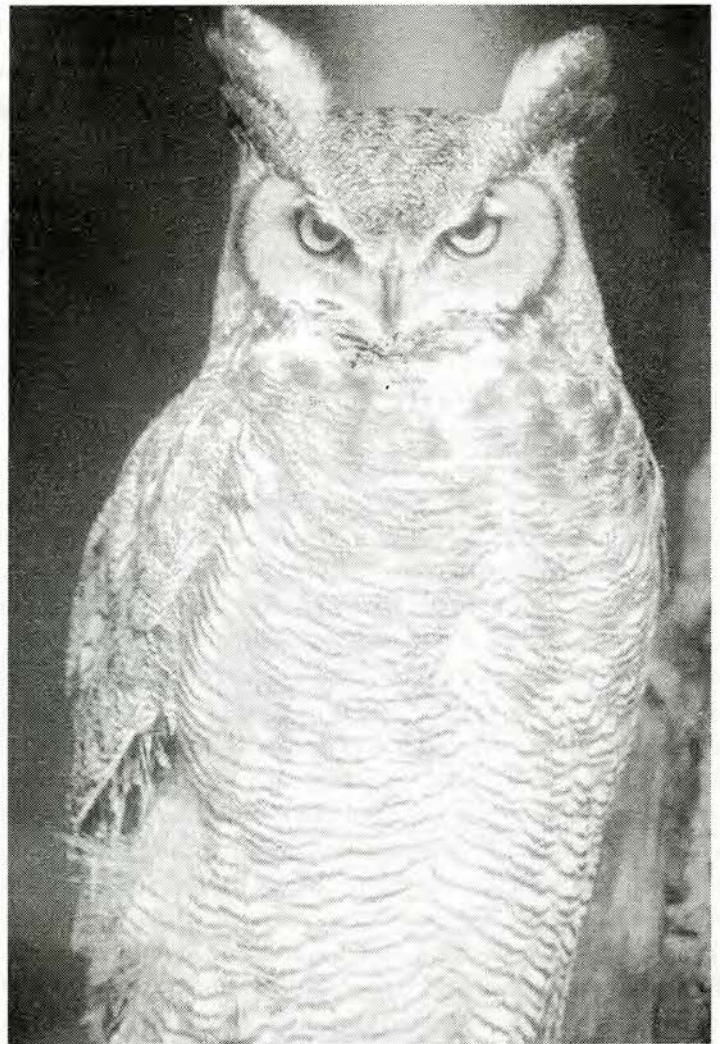
**Resolutions and Public Statements** (vacant)

We have a salmon resolution (see last newsletter) that, according to Chapter bylaws, needs to be handled by this committee.

**Audit:** vacant

### **AUCTION ITEMS**

Each year at the annual meeting the Chapter raises funds via raffles and live/silent auctions for support of its scholarship endowments, 4H habitat evaluation teams, Inland Empire Natural Resources Youth Camp, bringing outside speakers to our meetings, and other worthy causes. However, it seems that each year only 1 or 2 individuals get saddled with the responsibility of rounding up all the auction items, and it's usually the same people. We all have personal contacts with local businesses, artists, conservation organizations, etc., that would be willing to donate an item or 2 to the Chapter for the auction if we just ask. We may even have items that we can personally contribute (members have done a great job of offering trips as auction items, so keep it up). We get very generous support each year from the Rocky Mountain Elk Foundation, Pheasants Forever, and National Wild Turkey Federation. Without them, our auctions would be pretty slim. So over the next couple months, be thinking about items for the auction to take a little of the pressure off those individu-



### **Research Update**

**EDITOR'S NOTE:** *I know you're out there, come on folks get me some material for the next newsletter. If you are not a researcher but know someone who is, poke him or her in the ribs and get them to send me some material. Thanks! Let's try posting some digital photos too. Or if you only have photos send them to me and I will scan them.*





**The Idaho Chapter of the Wildlife Society  
will host the 2001 Annual Meeting in Boise  
at the DoubleTree Hotel Riverside/Downtown,  
7-10 March 2001.**

The biennial Rare Animal Workshop will be held on Wednesday 7 March. The focus of this year's workshop will be a review/revision of the Idaho Department of Fish and Game's Species of Special Concern list, a review of the revised U.S. Forest Service Regions 1 and 4 Sensitive Species lists, possibly a revised BLM Sensitive Species list, and the new criteria used to develop these lists. If there are any other topics of interest that members would like to see on this year's agenda, please contact Chuck Harris (334-2920; [charris@idfg.state.id.us](mailto:charris@idfg.state.id.us)). Idaho Partners in Flight and the Idaho Bat Working Group may also be holding meetings in conjunction with the Chapter meeting.

Rod Sando, the new Director of the Department of Fish and Game, has graciously accepted our invitation to give the plenary address on Thursday morning. Being optimistic about the passage of The Conservation and Reinvestment Act (CARA) we will fill the remainder of Thursday morning with a session on CARA implementation in Idaho. In light of the interest, editorials, and commentary on the Idaho Fish and Game Commission's new Policy for Avian and Mammalian Predation Management, we are planning a session along the general theme of "Predator Control and Management: Past and Present" on Thursday afternoon. We envision this session will include invited papers to present an overview of predation effects and predator control on big game populations, an overview of predation effects and predator control on upland game bird populations, a historical review of predator control activities in Idaho, and a presentation on the Commission's current predator policy. These general presentations will then be followed by reports on current predator/predation research projects in the state. Friday and Saturday morning (if needed) will be filled with contributed paper sessions. Given our past fire season and all the media and political attention to wildland fires, we are considering a session that would address the effects of fire on wildlife populations and habitats. The banquet auction is planned for Friday evening. We have extended an invitation to nature photographer Art Wolfe to give a talk/slide presentation and afford him an opportunity to promote his new book "The Living World" (and maybe donate some signed posters for the auction). We will keep you posted and make alternate plans if needed.

Any ideas about special workshops or sessions should be submitted to Toni Holthuijzen by the end of October to be incorporated into the program. Updates on the meeting, deadlines, and reminders (pleadings) to submit abstracts will be forthcoming. Please address any inquiries and suggestions about workshops, symposia, or anything else that may be of interest to the annual meeting to Toni Holthuijzen, tel. 208-388-2352, e-mail [tholthuijzen@idahopower.com](mailto:tholthuijzen@idahopower.com)

Updates on the annual meeting will be posted on the Chapter's web site ([www.ictws.org](http://www.ictws.org)).





## FINAL ANNOUNCEMENT

### 2001 ANNUAL CONFERENCE AND MEETING, NORTHWEST SECTION AND ALBERTA CHAPTER OF THE WILDLIFE SOCIETY

#### CO-HOSTED BY THE ALBERTA CHAPTER OF THE WILDLIFE SOCIETY, AND ALBERTA ENVIRONMENT, NATURAL RESOURCES SERVICE

#### MARCH 2-4, 2001; BANFF PARK LODGE & CONFERENCE CENTRE, BANFF, ALBERTA

**COORDINATING SCALES OF MANAGEMENT, DECISION MAKING AND PLANNING** is the focus of the plenary session, which will open the conference (starting at 1:30PM, March 2, in the Castle/Assiniboine Rooms). Fish and wildlife programs sometimes suffer from a lack of coordination among efforts organized at different administrative levels (e.g., community, regional, provincial or state, national, international). The session will review what have been and/or continue to be major stumbling blocks to more effective integration of programs across administrative jurisdictions, whether "bottom-up" or "top-down" approaches are taken. **Dr. David Schindler**, an internationally renowned scientist and conservation activist at the University of Alberta will provide an overview of the challenges from a scientific standpoint. **Dr. John Donihee**, an expert in both natural resources and wildlife law in Canada and the U.S.A., from the Canadian Institute of Resources Law, will share his perspectives on legal constraints and challenges. **Dr. Hal Salwasser**, Dean and Director of Forest Research Laboratory, College of Forestry, Oregon State University, will present the administrative perspective, based on his years of experience developing and implementing ecosystem management at national, regional and state levels. **Jamie Pinkham**, representative for the Idaho Nez Perce Tribe, will present challenges from the perspective of the community and, in particular, Native Americans.

The two following days will be filled with contributed papers on a wide range of topics in wildlife and fisheries research and management, from jurisdictions throughout the Northwest Section. If you have any questions on the conference, or want to volunteer to help, please contact the conference coordinator, Mr. Arlen Todd (phone: 403-297-7349; fax: 403-297-2843; e-mail: arlen.todd@gov.ab.ca).

#### Location and Transportation

The Banff Park Lodge is situated in the world-renowned town of Banff, in the heart of historical Banff National Park. Surrounded by the majestic Canadian Rockies, the hotel is situated at **222 Lynx Street**, just one block from the town center, and a short walking distance to excellent shopping, restaurants, museums, and other points of interest.

Banff is located in southwestern Alberta, about 130 kilometers (80 miles) west of Calgary, on the TransCanada Highway (Highway 1). Banff is only a ninety minute drive from the Calgary International Airport, where cars can be rented from all major rental companies. Regular bus service operates directly from the airport to the Banff Park Lodge, as well; two companies provide regular bus service, as frequently as every two hours, each way (**Banff Airporter-- call 1-888-449-2901; Brewster--call 403-221-8242**). Advance reservations are either required or highly recommended, for the bus trip.

#### Lodging

The conference and meetings will be held at the Banff Park Lodge and Conference Centre. The lodge has reserved a block of 100 rooms at special conference rates. To reserve rooms at the special rate, be sure to make reservations by **January 15, 2001** at 1-800-661-9266 (**mention that you are attending the Wildlife Society meeting, Alberta Chapter**). The rate is \$115 **Canadian**/room/night, for single or double occupancy, plus 12% tax. For third and fourth occupants in a room, add \$15 (Canadian)/person/night (plus tax). Children under the age of 16 stay at no additional charge. The rates mentioned above are extended to delegates of the conference both three days before and three days after the conference. When making reservations, you will require a valid credit card number or check or money order deposit. Deposits will be returned, when requested, if notice of cancellation is received by the Banff Park Lodge at least 48 hours prior to the expected time of arrival.

If rooms are still available, the Banff Park Lodge will provide the same, special conference rates to attendees of the conference who make reservations after 15 January, 2001. A variety of other hotels and motels are located near the Banff Park Lodge, including Brewster Mountain Lodge (403-762-2900), Homestead Inn (403-762-4471), and Bow View Motor Lodge (403-762-2261). However, we have not arranged discounted rates at any of the other hotels and motels.



## Registration

Please take advantage of early registration discounts by completing and returning the registration form (see following page) with full payment (**in Canadian funds only**) by **February 7, 2001**. Partial registrations will **not** be accepted. On-site registration will be available at the conference. On-site registration will commence at 10:30AM, March 2, on the Mezzanine Level of the Banff Park Lodge (Alpine Meadows area).

### **Pre-conference Field Tour** (tour runs 8:45-11:45 A.M., March 2)

A bus tour of the Bow Valley portion of Banff National Park (lead by staff of Banff National Park) will cover issues including elk relocation and management, predator restoration, highway restoration, and fire-wildlife interactions. Fabulous scenery and wildlife viewing opportunities will be featured, as well! Pre-register by February 7<sup>th</sup> and pay the \$20 (Canadian) fee for the field trip (see registration form on following page). If you register for the field trip, you will be contacted with instructions, at least one week before the conference.

### **Reception and Wildlife Auction Fundraiser**

The welcoming reception and social (including no-host cash bar) is on Friday evening, March 2, beginning at 7:00PM. **Dr. Paul Paquet**, a well renowned carnivore researcher with the World Wildlife Fund, will provide a key-note address on ecological research in mountainous ecosystems in and around Banff National Park. The fundraiser auction of wildlife-related items will follow. Proceeds go entirely to the Alberta Chapter's student scholarship fund.

### **Reception and Wildlife Auction Fundraiser**, continued

Paul Jones is our auction coordinator. **Please contact Paul with commitments to provide auction items** (phone 403-382-4357 or e-mail: [paul.jones@gov.ab.ca](mailto:paul.jones@gov.ab.ca)). Small and big-ticket items, custom-made ones, new purchases or used items will all be gratefully appreciated.

### **Banquet**

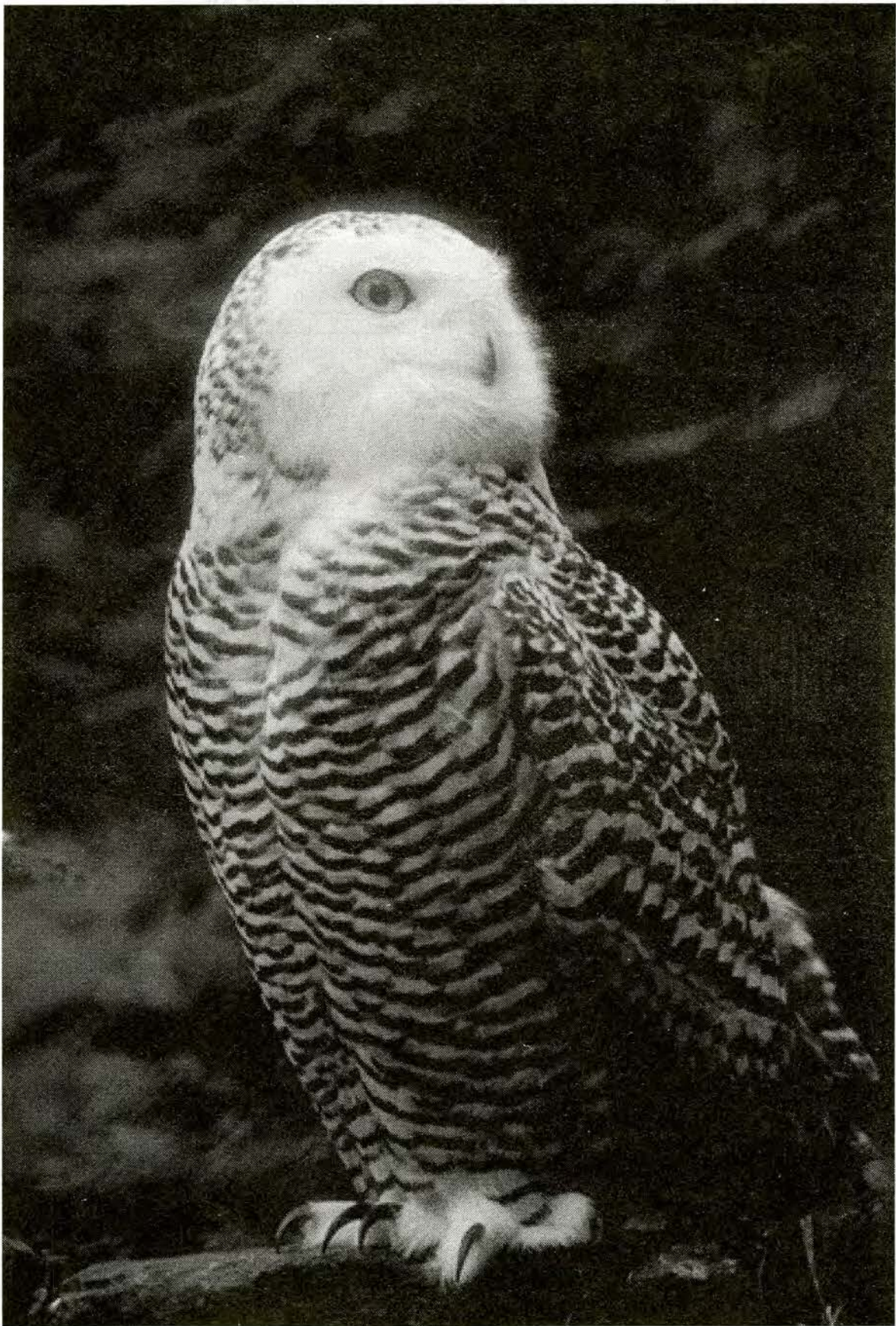
The banquet is included in the registration fee and is on Saturday evening, March 3. After dinner, a well-known wildlife scientist and natural resources administrator, Dr. Morley Barrett, will share wisdom and witticisms, in a presentation entitled "**Reflections on the Wildlife Profession**". Annual awards of the Northwest Section will be presented that evening, as well.

### **Poster Session**

A poster session will run during March 2 and 3, beginning at 10:30AM, March 2. Posters on management, research, monitoring, new techniques, and work just getting underway will be included.









**REGISTRATION FORM FOR THE 2001 ANNUAL MEETING, NORTHWEST SECTION  
March 2-4, Banff Park Lodge & Conference Centre, Banff, Alberta**

Complete one form per person, please, to simplify our paperwork

Name \_\_\_\_\_

Affiliation \_\_\_\_\_

Address \_\_\_\_\_

City \_\_\_\_\_ Province/State \_\_\_\_\_ PC/Zip \_\_\_\_\_

Phone (Office) \_\_\_\_\_ Home \_\_\_\_\_ E-mail \_\_\_\_\_

Conference registration (no partial registrations)	Cost	Total
Friday-Sunday, March 2-4, 2001		
Early registration, post-marked on/before Feb. 7 <sup>th</sup>		
Regular member	\$55.00	_____
Student member	\$35.00	_____
Late registration, after Feb. 7 <sup>th</sup> (on-site, please)		
Regular member	\$70.00	_____
Student member	\$45.00	_____

**Banquet and lunch**

- Do you plan to attend the Saturday evening banquet (please circle)? **Yes No**
- Are you bringing a guest (if so, add additional cost)? \$35.00 each \_\_\_\_\_
- Do you plan to attend the lunch on Sunday (please circle)? **Yes No**
- Are you bringing a guest (if so, add additional cost)? \$22.00 each \_\_\_\_\_

**Pre-conference Field tour** (morning, March 2, 2001) \$20.00 \_\_\_\_\_

**Total Amount Paid** \_\_\_\_\_

Do you have any special needs (i.e., vegetarian)? If so, please specify \_\_\_\_\_

Please make checks payable (only in **Canadian** funds) to: **Alberta Chapter, TWS**. Purchase orders and credit cards will **not** be accepted. Please mail your registration form, with full payment, to: Arlen Todd, President-elect, Alberta Chapter TWS, Natural Resources Service, EP Building, Suite 100, 3115 - 12 Street NE, Alberta T2E 7J2.  
**Form can be downloaded from website:** [www.albertadirectory.com/actws](http://www.albertadirectory.com/actws)

**Cancellation policy:** A full refund will be provided when requested before January 15, 2001. For cancellations on or after January 15, 2001, there will be a handling fee of 25% of the total bill.



## **Wildlife Photo Contest**

Conference registrants are invited to submit their favorite original photos for a contest at the conference. Contact Troy Sorensen, if you are interested (phone 780-778-7116; e-mail [troy.sorensen@gov.ab.ca](mailto:troy.sorensen@gov.ab.ca)). Further details are posted on the Alberta Chapter's website ([www.albertadirectory.com/actws](http://www.albertadirectory.com/actws)).

## **Contributed Papers Sessions**

Concurrent sessions for contributed papers are scheduled to run all day Saturday (March 3) and the early part of Sunday morning (March 4). The conference will end with a final, plenary session of contributed papers on Sunday afternoon (March 4).

## **Student Awards**

Cash prizes will be given for the Best and Second-best Contributed Papers by students (\$100 and \$75, respectively), as well as for the Best Poster Paper given by a student (\$100). Prizes will be awarded on Sunday.

## **Business Meetings of the Northwest Section and the Alberta Chapter**

The annual business meeting of the Northwest Section is scheduled for the latter part of Saturday afternoon (March 3). The business meeting of the Alberta Chapter will take place late on Sunday morning (March 4).

## **Lunch and Alberta Chapter Awards**

A lunch is included in the registration fee and is on Sunday, March 4. The annual awards of the Alberta Chapter of the Wildlife Society, will be presented during the lunch.

## **Corporate Donations to Support the Conference**

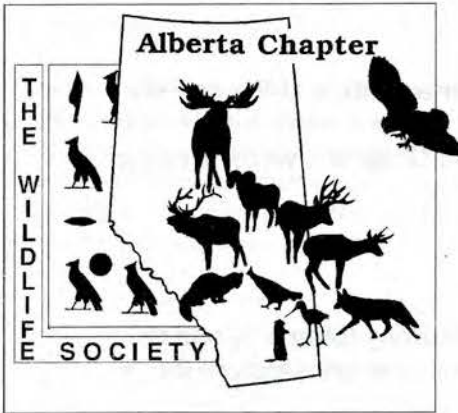
Corporate donations have contributed significantly to the quality and viability of TWS meetings organized in Alberta in the past. Thank you, again, for your generosity! If you or your employer are/is in a position to make a financial donation in support of the upcoming conference, please consider doing so. Donations both large and small will be gratefully appreciated! Please make checks payable (preferably in **Canadian funds**) to **Alberta Chapter of the Wildlife Society** and mail to **ACTWS, Box 4990, Edmonton, Alberta, Canada T6E 5G8**.

Donations received before March 1, 2001 would be most appreciated! Donors will be recognized in the printed conference materials, and verbally acknowledged at the conference, as well.

## **Other Attractions**

Five world-class areas for downhill skiing are situated within easy travelling distance of the Banff Park Lodge (most of them have regular bus service to and from the lodge). Cross-country skiing should be exceptional in early March, too. For further information on other attractions, visit the website of the Banff-Lake Louise Tourism Bureau ([www.banfflakelouise.com](http://www.banfflakelouise.com)).





## 2001 Annual Conference and Meeting Northwest Section and Alberta Chapter of the Wildlife Society

Co-Hosted By  
The Alberta Chapter of The Wildlife Society  
Alberta Environment, Natural Resources Service

MARCH 2-4, 2001  
BANFF PARK LODGE & CONFERENCE CENTRE  
BANFF, ALBERTA

### Guest Speakers

David Schindler  
Hal Salwasser  
John Donihee

### Paper / Poster Sessions

Two days filled with papers on a wide range of topics in wildlife and fisheries research and management.

### Pre-conference Field Tour

A bus tour of the Bow Valley by Banff National Park staff will cover many wildlife issues. Fabulous scenery and wildlife viewing opportunities.

### Auction Fundraiser

Welcome reception and cash bar social on Friday evening. Contact Paul Jones to **donate auction items** at 403-382-4357 or e-mail: paul.jones@gov.ab.ca. Proceeds go entirely to the Alberta Chapter's student scholarship fund.

### Banquet

Dinner speaker **Dr. Morley Barrett**, Natural Resources Service. Dinner is included with the Conference Registration Fee.

### Wildlife Photo Contest

Full details on the contest and **opportunities to donate prizes** are on the Chapter's website [www.albertadirectory.com/actws](http://www.albertadirectory.com/actws).

### Lunch and Alberta Chapter Awards

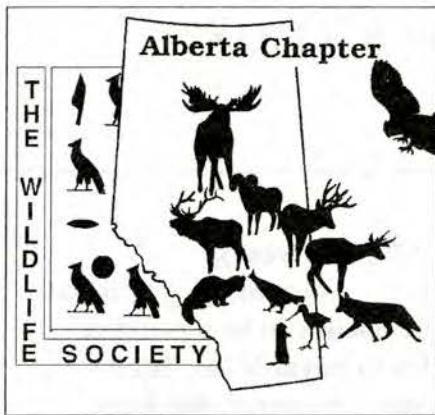
Award presentations, amusing stories, and free food

### Other Attractions

Five world-class downhill ski areas, cross-country skiing, and many other local attractions (visit [www.banfflakelouise.com](http://www.banfflakelouise.com) for more information).

For full information on the Conference and its activities visit the website at [www.albertadirectory.com/actws](http://www.albertadirectory.com/actws). The Banff Park Lodge and Conference Centre has reserved a block of 100 rooms at **special conference rates**. Make reservations by January 2, 2001 at 1-800-661-9266 and mention that you are attending the Wildlife Society meeting, Alberta Chapter.





## 2001 Annual Conference and Meeting Northwest Section and Alberta Chapter of the Wildlife Society

Co-Hosted By  
The Alberta Chapter of The Wildlife Society and  
Alberta Environment, Natural Resources Service

MARCH 2-4, 2001  
BANFF PARK LODGE & CONFERENCE CENTRE  
BANFF, ALBERTA



### Photo Contest

We're asking members of all chapters of the **Northwest Section** to electronically submit their favourite photos for a contest that will be judged at the Section's annual conference in March 2001.



Last year was the first year the ACTWS held a photo contest and it received rave reviews.

Full details on **Photo Categories**, **Contest Rules**, **Submission Guidelines**, and **Photo Judging** are available on the ACTWS website ([www.albertadirectory.com/actws](http://www.albertadirectory.com/actws)).



### Contest Prize Donation

The contest would greatly benefit from any contributions towards prizes from members, chapters, organizations, or businesses. The conference organizers are open to any type of prize donation (camera supplies, frames, arts and crafts, field equipment, etc.). Financial donations to the contest will be used to buy prizes.

To donate prizes for the contest contact Steve Hanus ([hanus@arc.ab.ca](mailto:hanus@arc.ab.ca) or 780-632-8608).

All contributions from chapters, organizations, or businesses will be acknowledged at the conference and within chapter newsletters.

**Lets Make this a great Photo Contest!**



# IDAHO WILDLIFE SOCIETY MEMBERSHIP APPLICATION

I want to join the Idaho Chapter of the Wildlife Society, and enclose \_\_\_\$10.00 (1 year), \_\_\_ \$20.00 (2 years), or \_\_\_\$30.00 (3 years) in payment of dues. This is \_\_\_ new or \_\_\_ renewal membership. It is not necessary to be a member of the parent The Wildlife Society to be a member of the Idaho Chapter of TWS. Membership is by calendar year. Make checks payable to: "Idaho Wildlife Society" and mail to Idaho Wildlife Society, c/o Michelle Commons, Treasurer, 868 East Main Street, Jerome, ID 83338 (Telephone 208-324-4359)

Name  
Address

E-Mail

Telephone

---- Clip-And-Send ----

**Idaho Chapter the Wildlife Society**  
**19 Havens Lane**  
**Salmon, Idaho 83467**



FEB 01 2001

Charles Harris  
Idaho Dept. Fish & Game  
P.O. Box 25/ 600 Walnut St  
Boise Idaho 83707