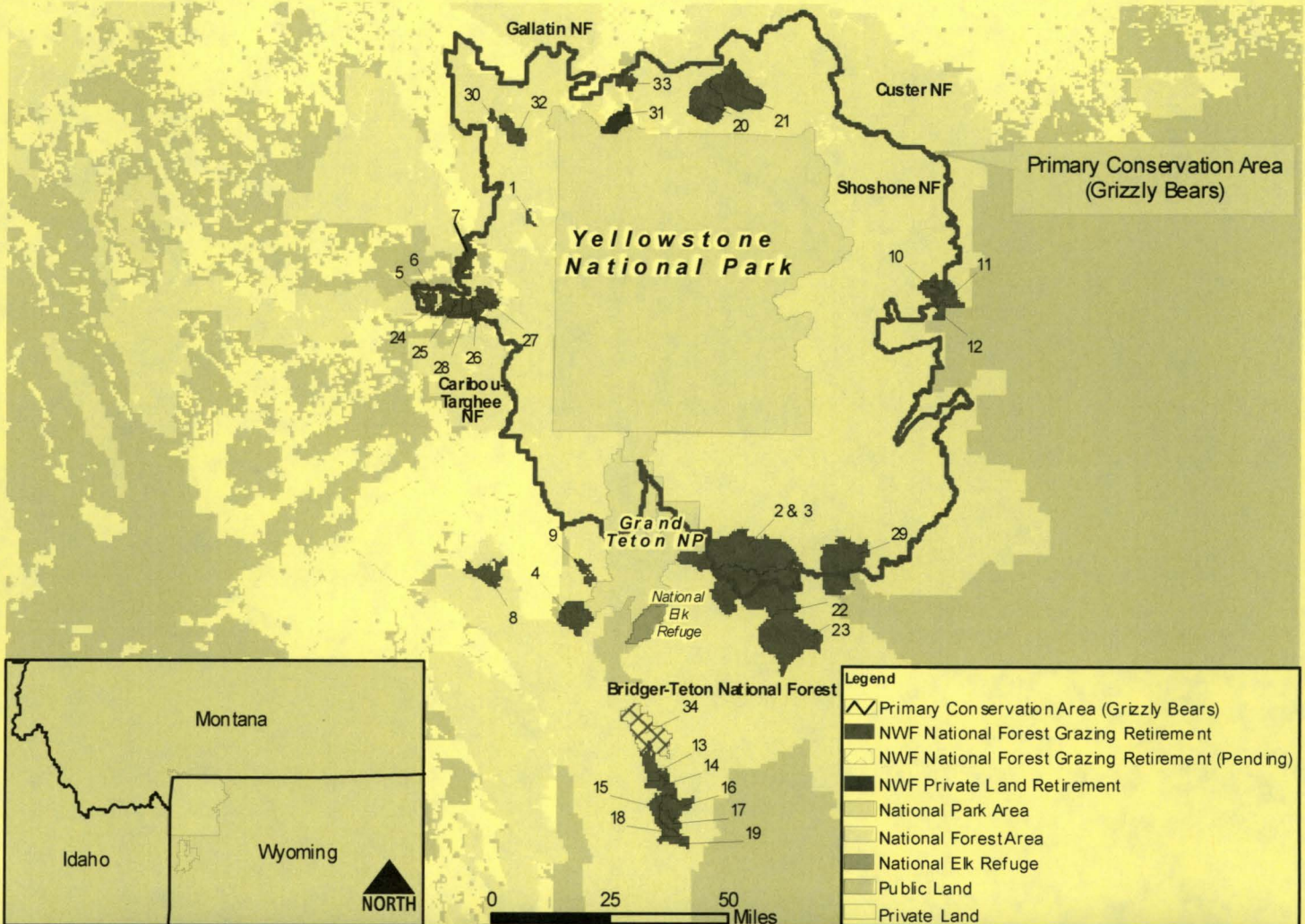




National Wildlife Federation* (NWF) Grazing Retirements in the Greater Yellowstone Ecosystem (2002-2011)

*NWF has been a leader on many of these projects and a partner with the Wyoming Chapter of the Wild Sheep Foundation (WSF) on others. Please see chart below map.



Map No.	Name [Number] of Retirement/s	Location/National Forest	Size [Acres]	Type of Livestock	Completion Date	Nature of Conflict **
1	Horse Butte [1]	SW MT/Gallatin	2,200	Cattle	Apr 2003	B
2+3	Blackrock/Spread Creek [2]	NW WY/Bridger -Teton	87,000	Cattle	Aug 2003	GB, W, B
4	Moose Creek [1]	NW WY/Caribou -Targhee	24,500	Sheep	Jan 2004	GB, W
5-7	Island Park (Carrot Canyon/ Snyder Creek/West Lake) [3]	E ID/Caribou -Targhee	12,526	Sheep	Apr 2004	GB, W
8+9	Canyon Badlands [2]	NW WY/ Caribou -Targhee	12,000	Sheep	May 2004	GB, W
10 -12	Jim Mntr/Dunn + Trout creeks [3]	NW WY/Shoshone	16,800	Sheep	May 2005	GB, W, BHS
13 -19	Wyoming Range [7]	NW WY/Bridger -Teton	67,500	Sheep	May 2005	W, BHS
20+21	Ash Mountain/Iron Mountain [2]	SW MT/Gallatin	74,000	Sheep	Feb 2006	GB, W, BHS
22+23	Bacon Creek/Fish Creek [2]	NW WY/Bridger -Teton	178,000	Cattle	Jan 2007	GB, W, Elk, Moose
24 -28	Icehouse -Willow Creek /Blue Creek/ Coffeep ot/Sawtell/ /Hotel Creek [5]	E ID/Caribou -Targhee	33,714	Sheep	Feb 2008	GB, W
29	Upper Dunoir [1]	NW WY/Shoshone	34,500	Cattle	Feb 2008	GB, W
30	Cache -Eldridge [1]	SW MT/Gallatin	9,200	Cattle	Feb 2008	B, GB, W
31	Royal Teton Ranch [1]	SW MT/Gallatin	6,000	Cattle	Dec 2009	B
32	Wapiti [1]	SW MT/Gallatin	8,180	Cattle	April 2010	B, GB, W
33	Slip and Slide [1]	SW MT/Gallatin	7,235	Cattle	Aug 2011	GB, W, B
34	Willow Creek [1]	NW WY/Bridger -Teton	38,773	Cattle	Aug 2011 (Pending)	GB, W, CT

TOTAL Retirements [34] 579,855

** GB=Grizzly Bears - W=Wolves - B=Bison - BHS=Big Horn Sheep - CT=Cutthroat Trout