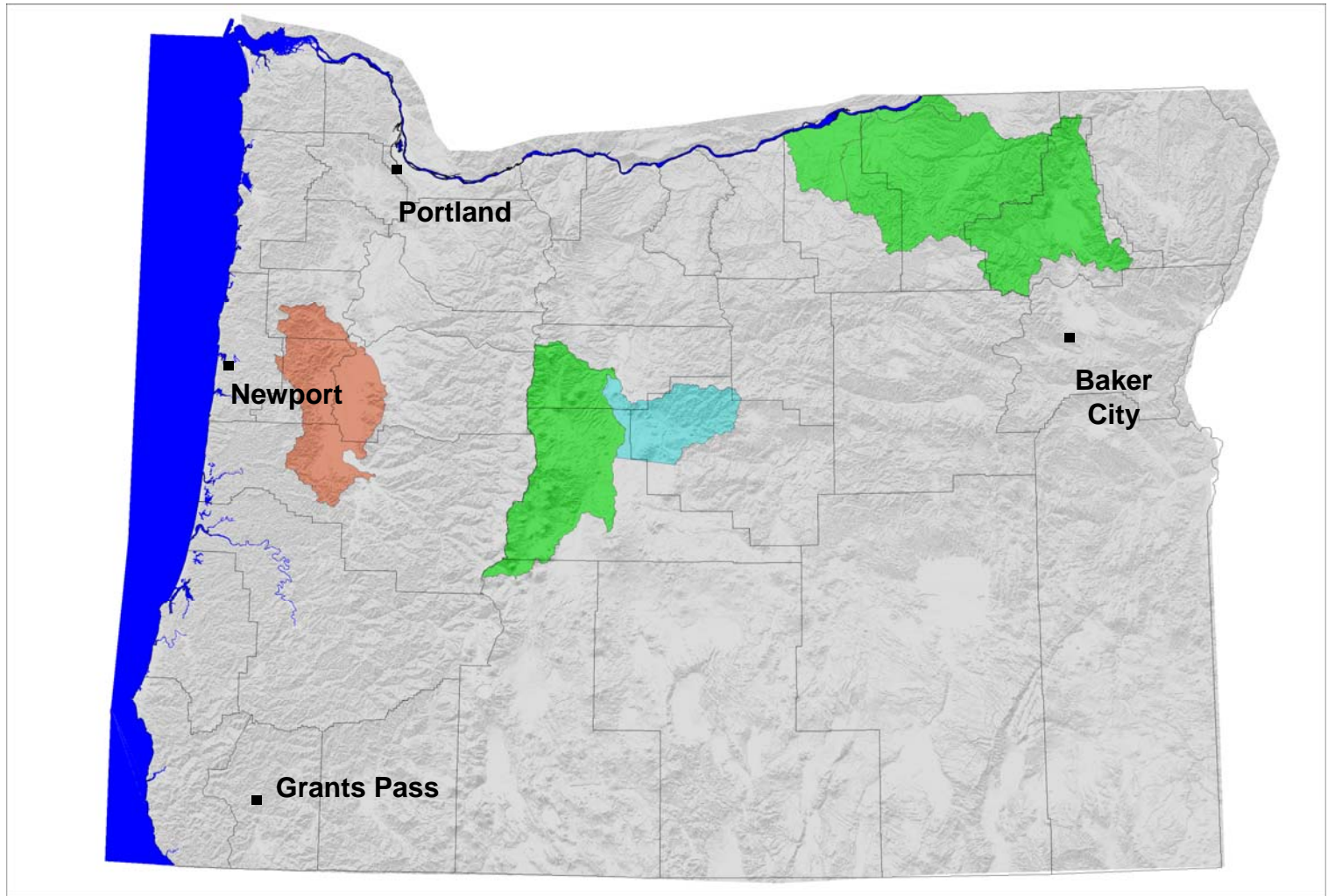


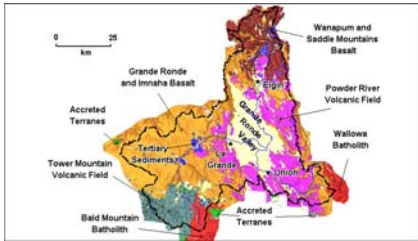


Oregon Department of Geology and Mineral Industries – Projects and Products for 2007



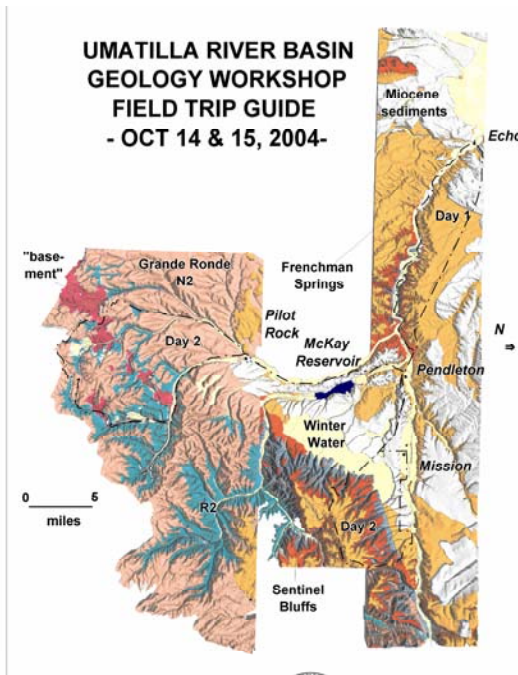
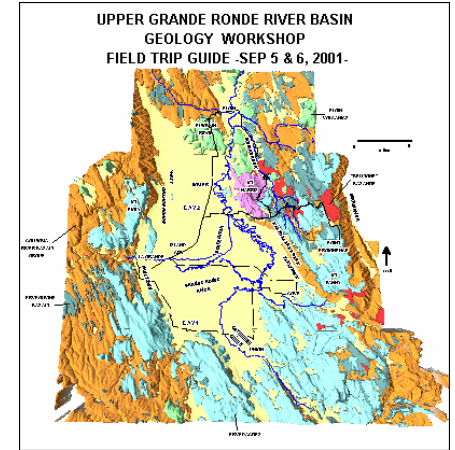
Eastern Oregon Field Office project areas – focus on basin studies

April 10, 2007 IFTNC



DOGAMI's Goals

Produce peer-reviewed map-based geologic reports covering an entire study area

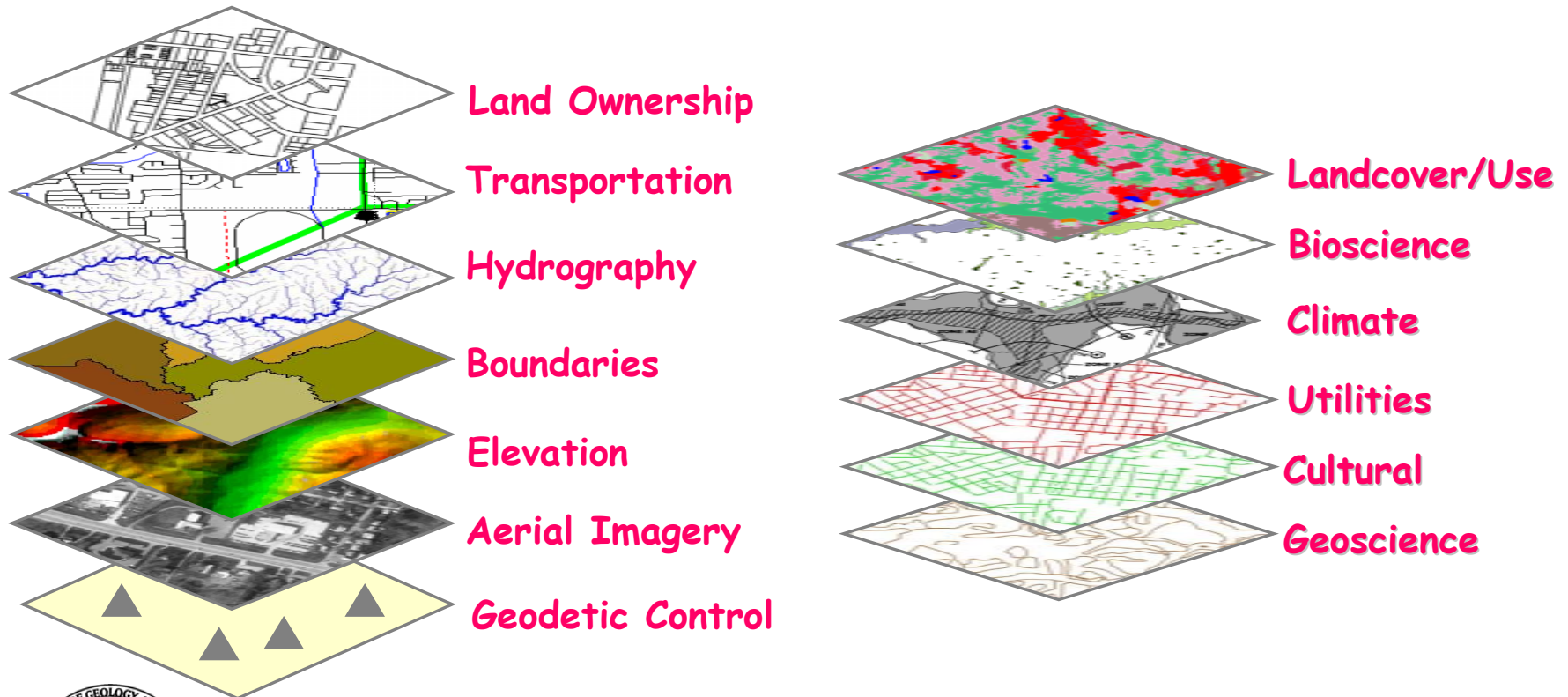


Assemble all geologic data available, including well logs, geochemical samples, GIS and geophysical data

Share observations through workshops, field trips, and scientific and public presentations.

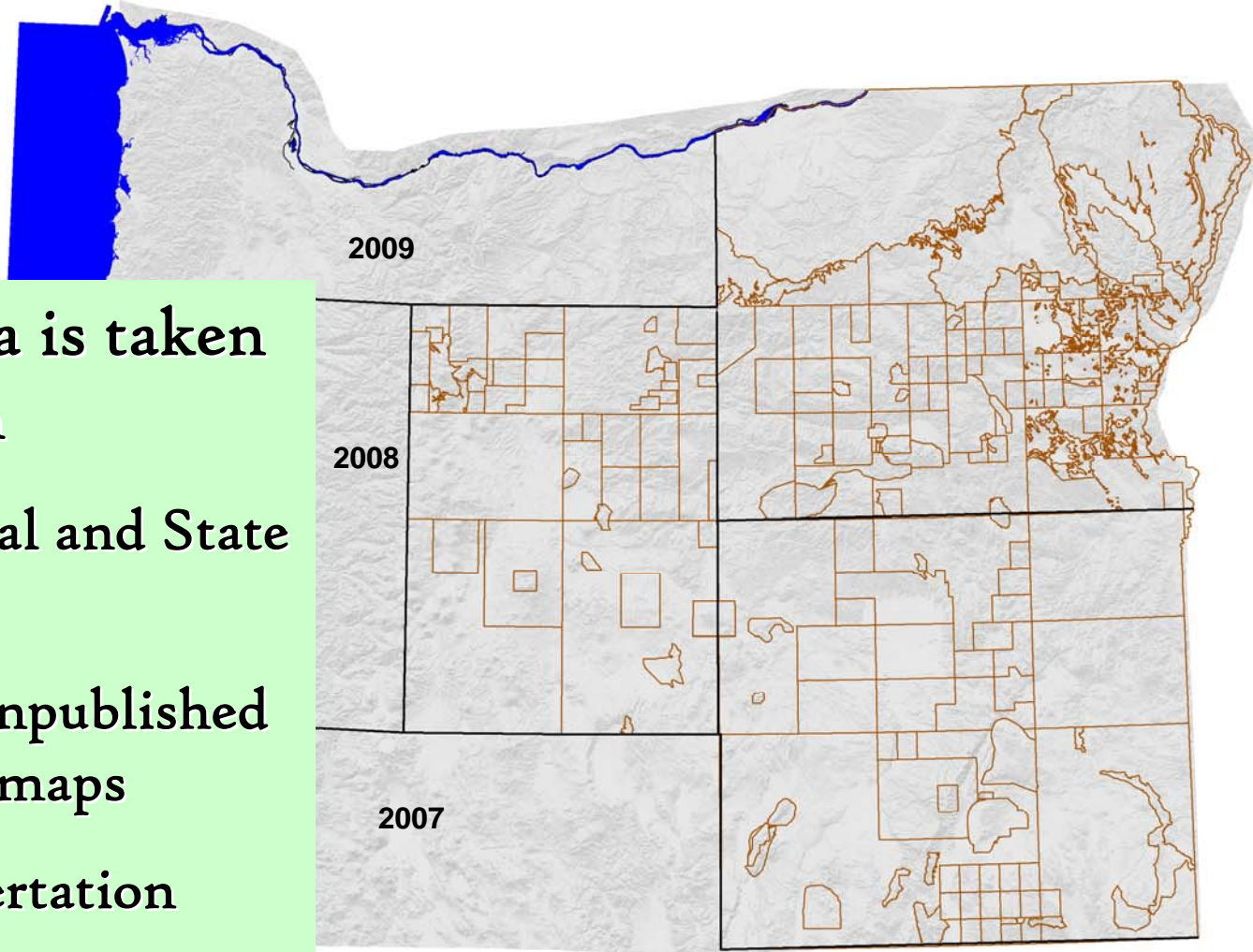


Oregon Department of Geology and Mineral Industries is working to develop Geoscience Layers



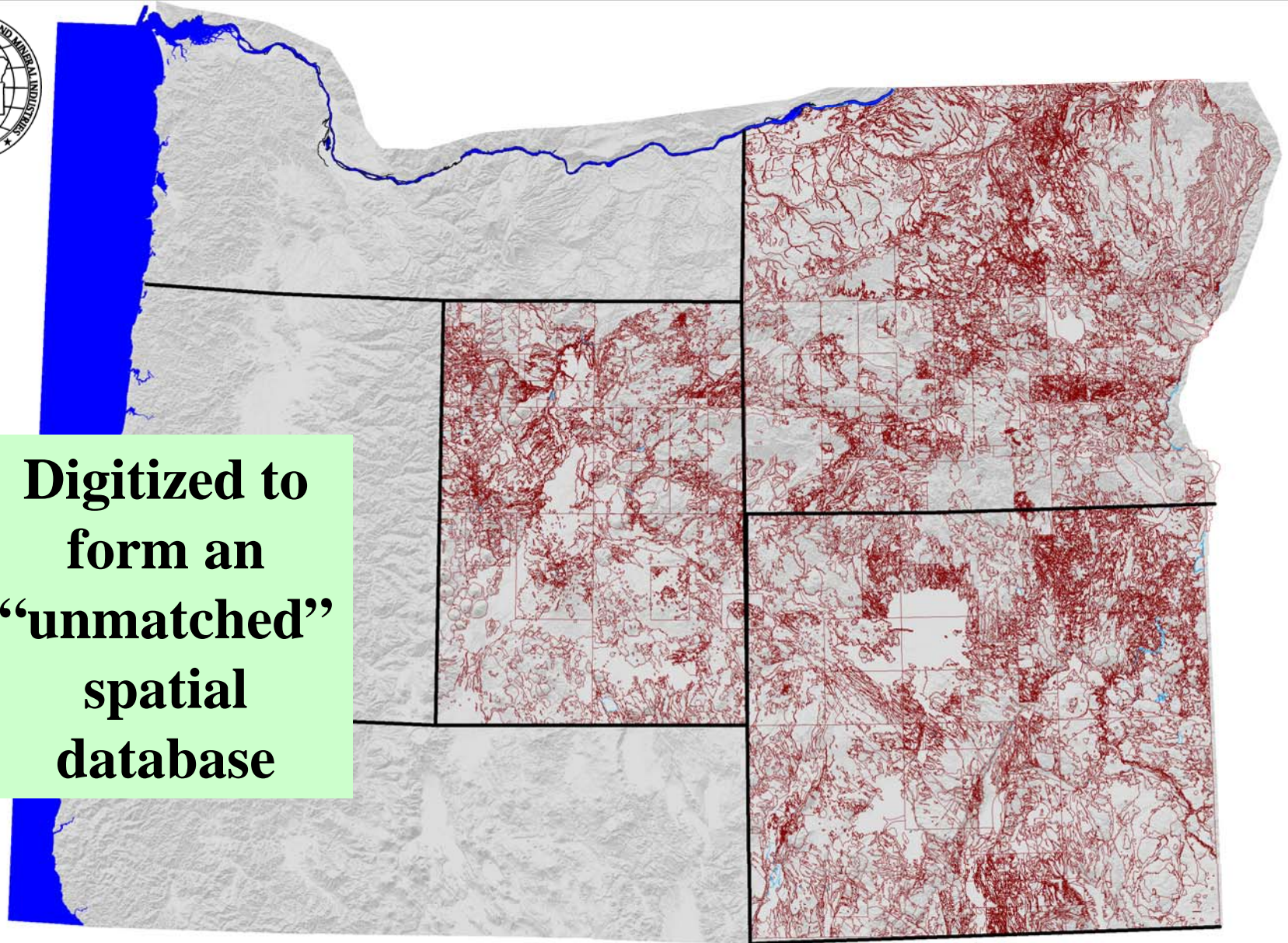
For the the Oregon Geographic Information Center (OGIC)

Digital Compilation Project



Geologic Data is taken
from

- Published Federal and State Maps
- Published and unpublished “gray literature” maps
- Thesis and dissertation maps

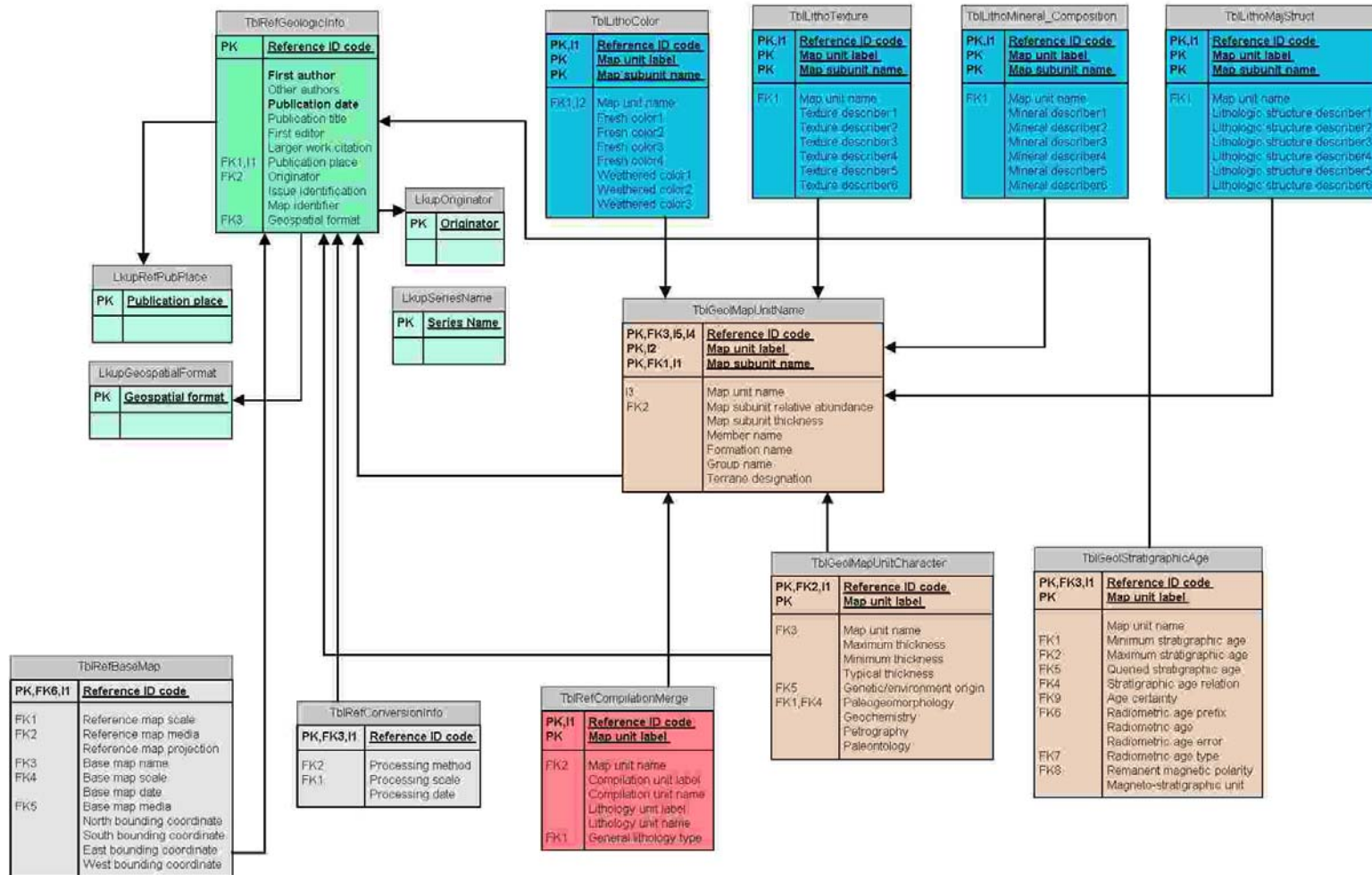


**Digitized to
form an
“unmatched”
spatial
database**



Each entry is linked to multiple tables in an Access database

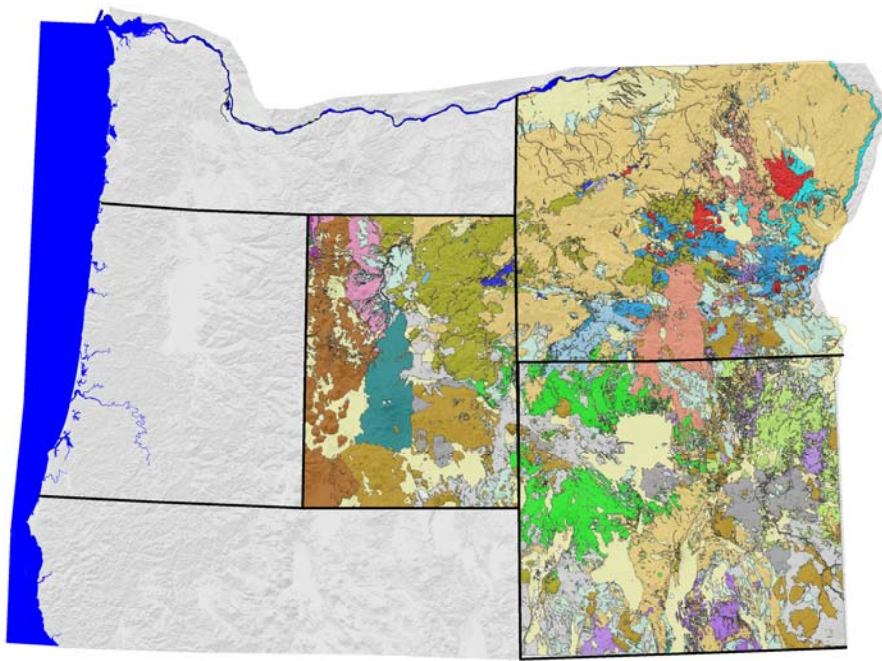
NE OREGON COMPILATION - GEOLOGIC AND DESCRIPTIVE DATABASE



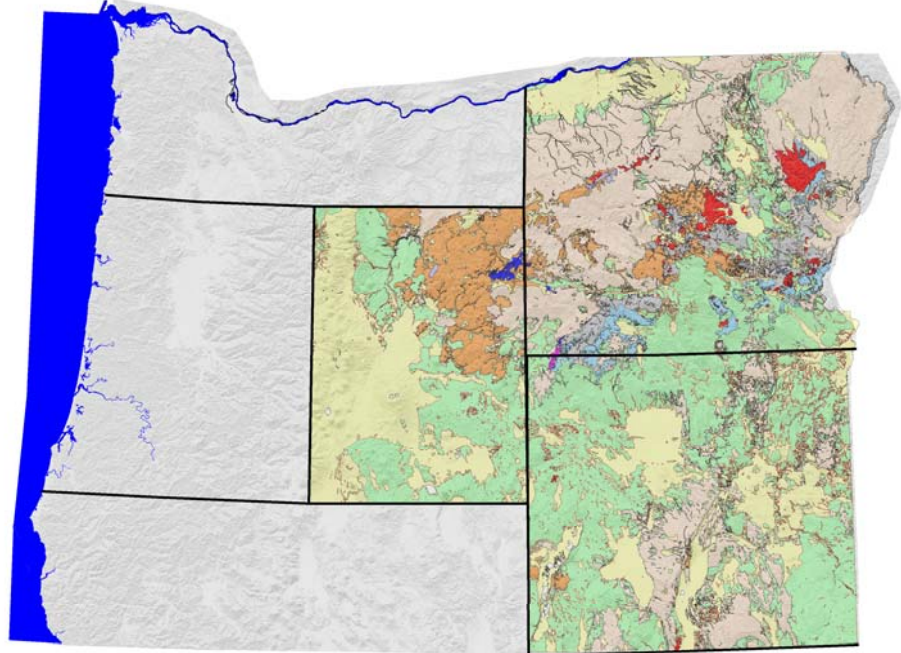
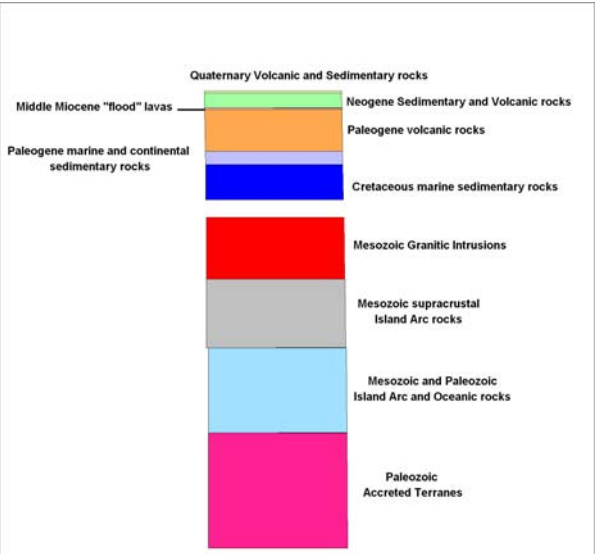
Examples of Derivative Maps



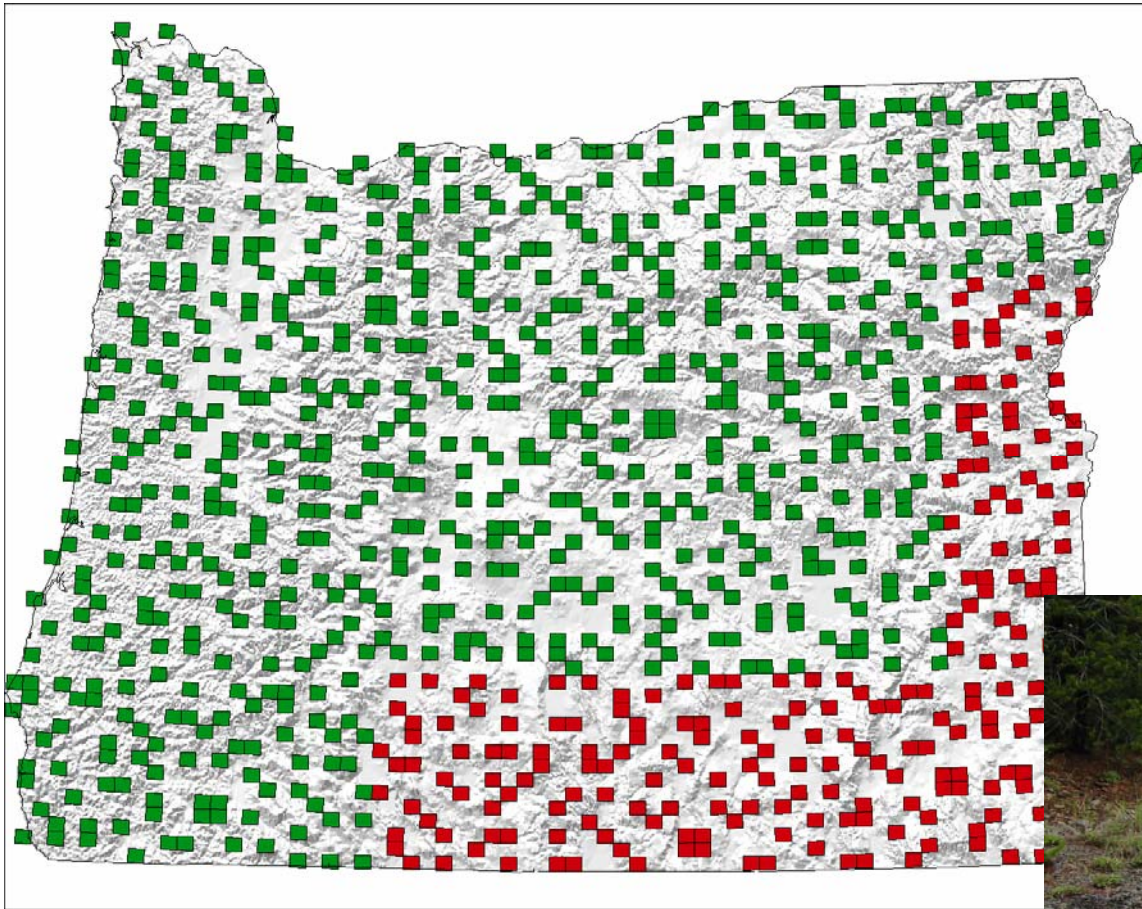
Large scale stratigraphic units



Oregon-centric temporal units

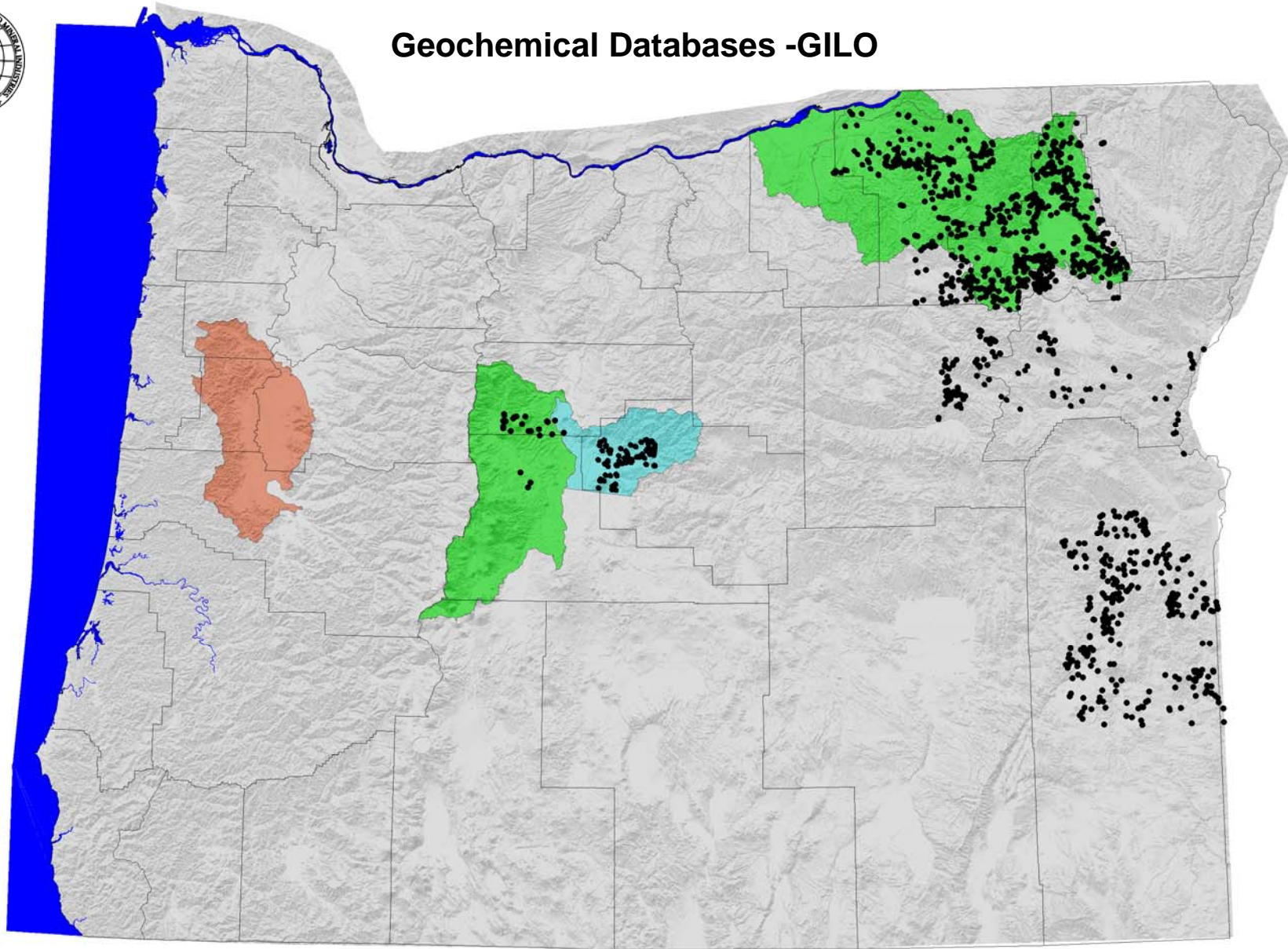


Geochemical Databases - USGS Stream Sampling Program



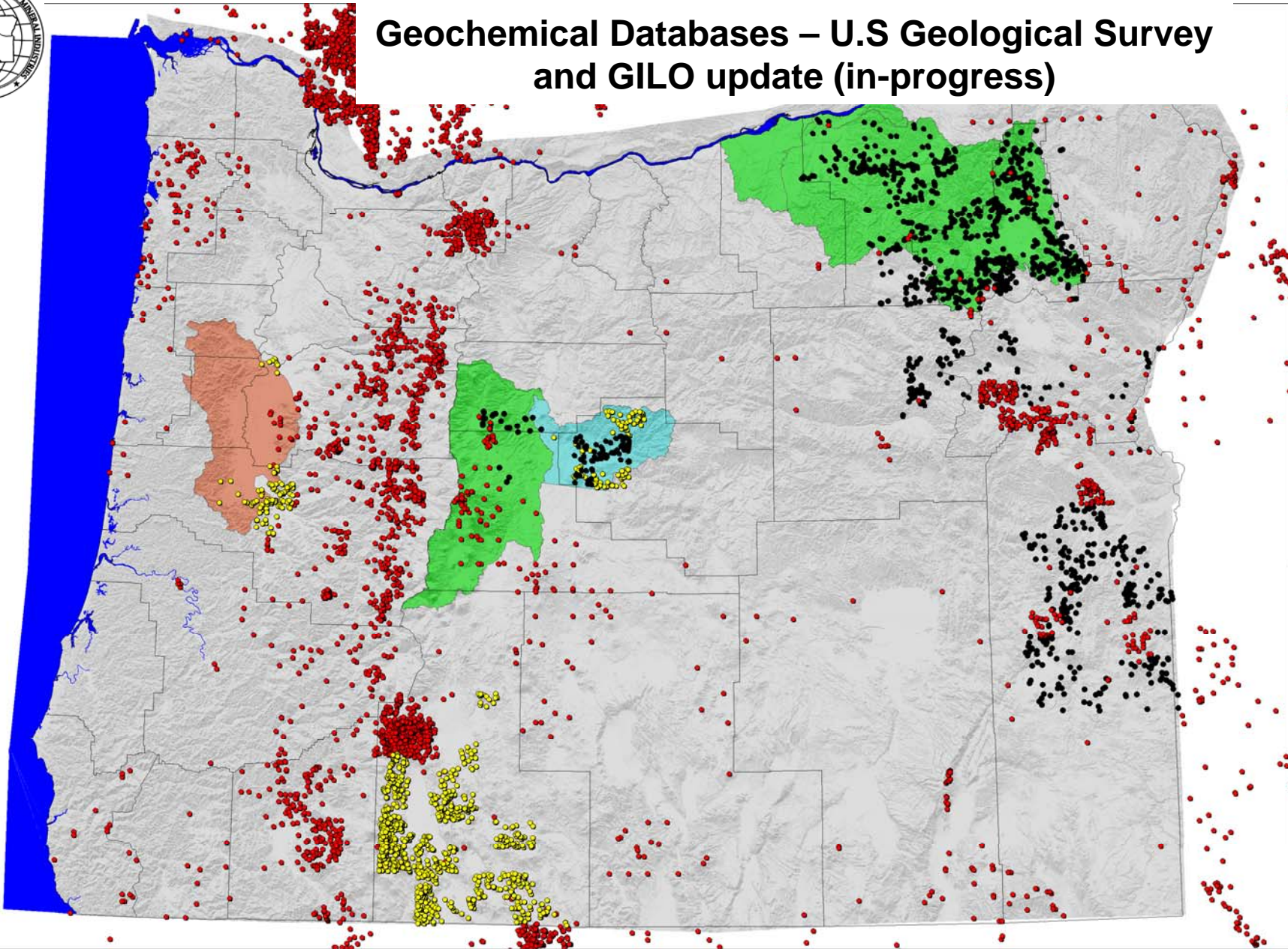


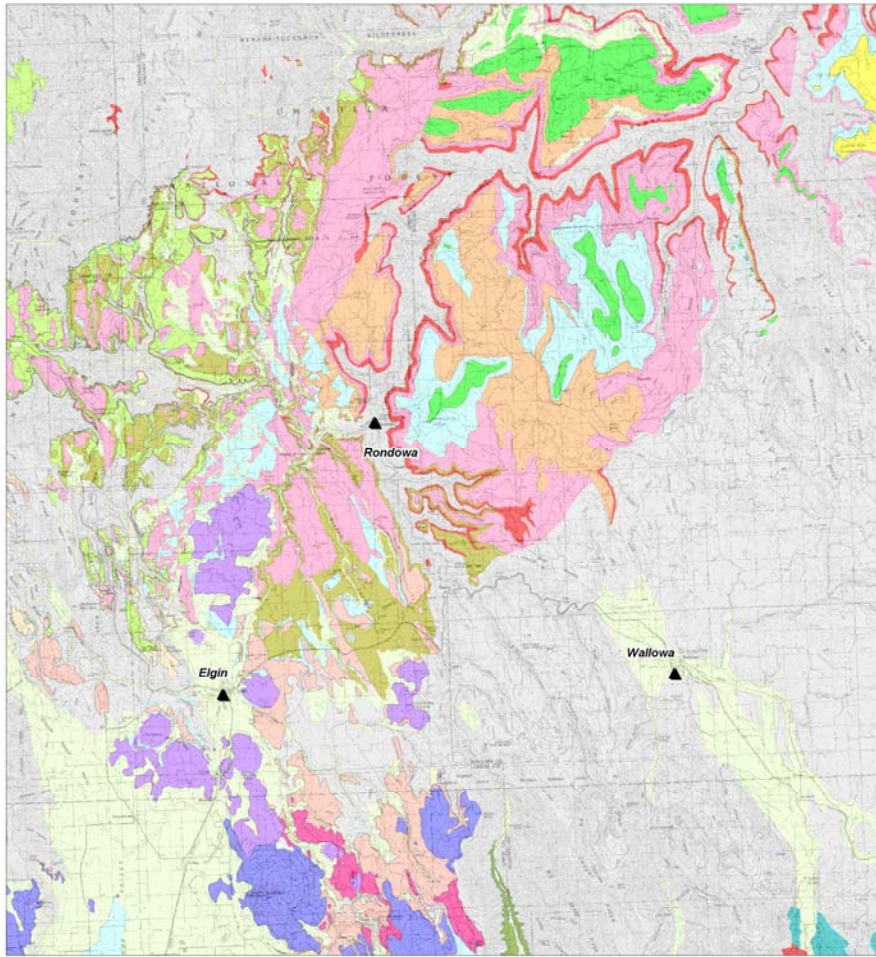
Geochemical Databases -GILO





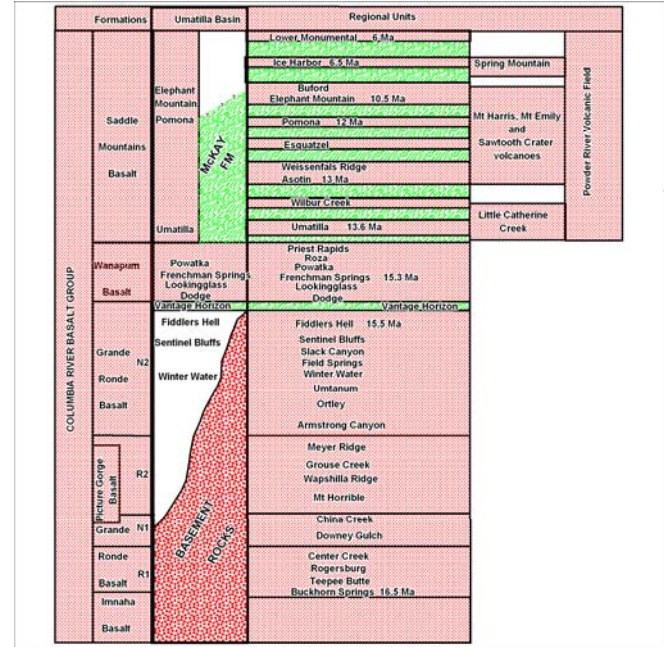
Geochemical Databases – U.S Geological Survey and GIL0 update (in-progress)



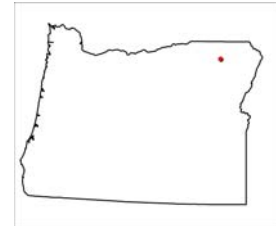


EXPLANATION

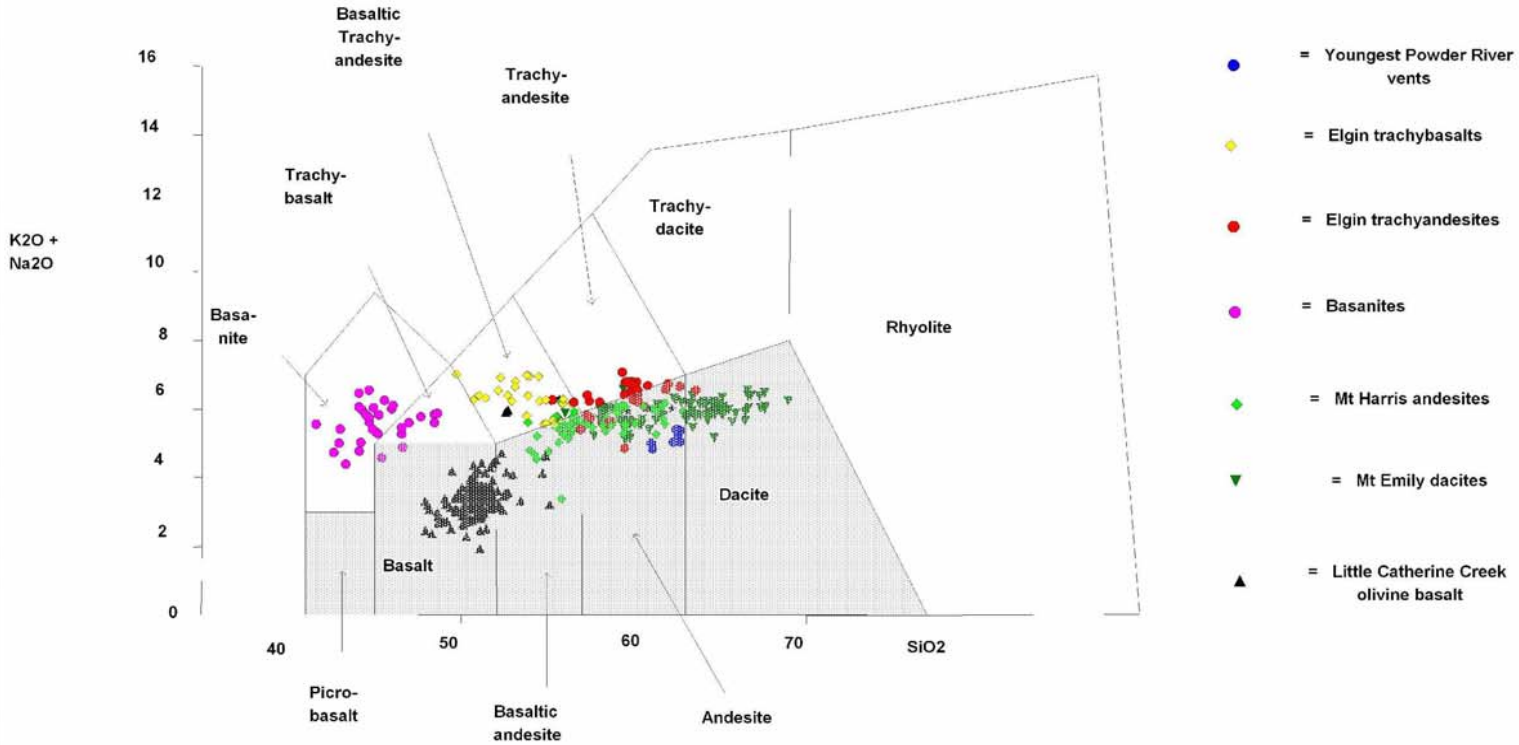
COLUMBIA RIVER BASALT GROUP		POWDER RIVER VOLCANIC FIELD	
	Surficial deposits		Sedimentary interbeds
	Saddle Mountains Basalt		Basaltic flows
	Bulford member		Andesite and dacite flows
	Elephant Mountain member		Olivine basalt flows
	Eden member		Elgin Volcanics
	Umatilla member		
	Wanapum Basalt		
	Powatka member		
	Frenchman Springs member		
	Lookingglass member		
	Dodge member		
	Grande Ronde Basalt		
	Imnaha Basalt		
	pre-Tertiary basement rocks		



Geologic Map of Elgin and vicinity

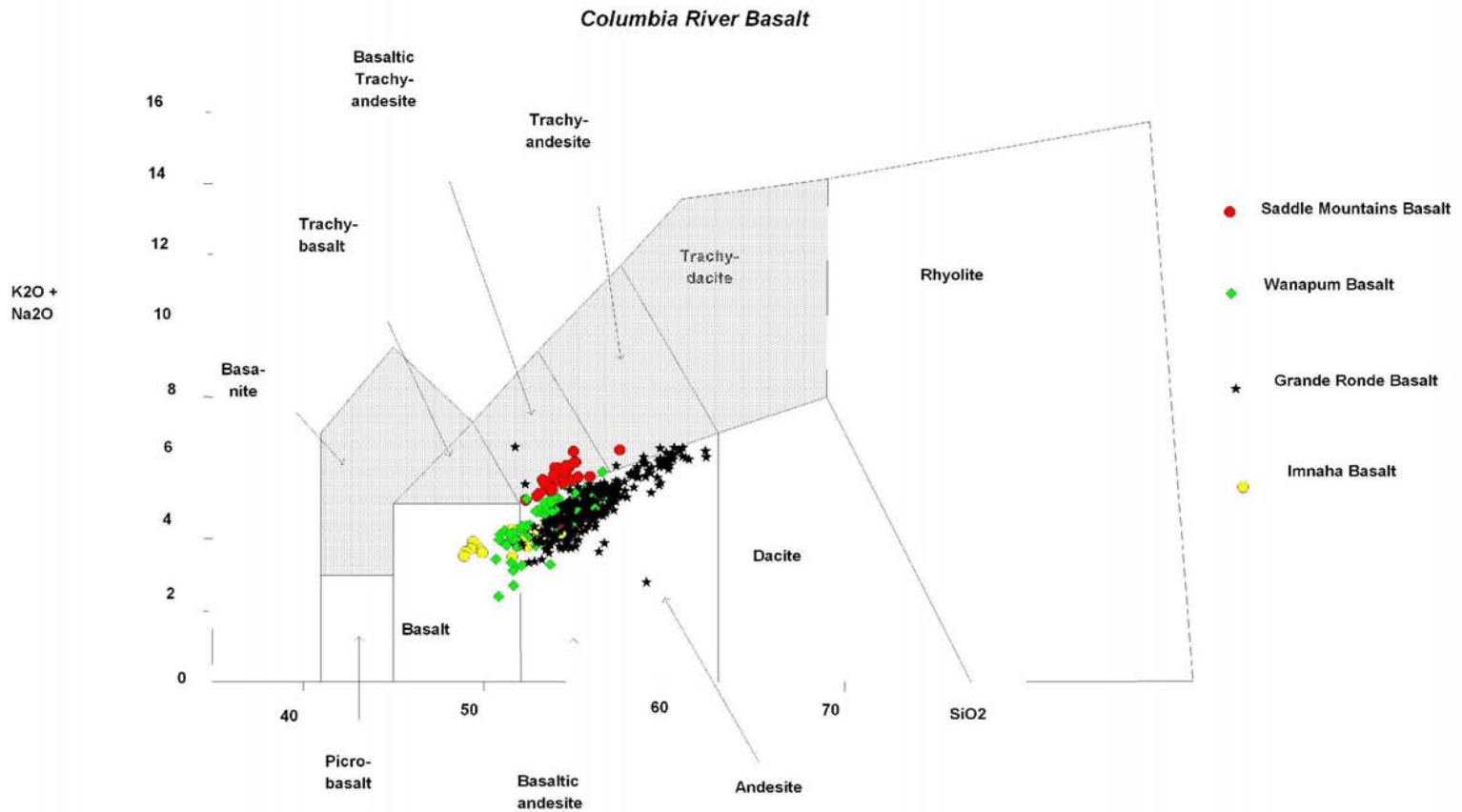


Powder River Volcanic Field



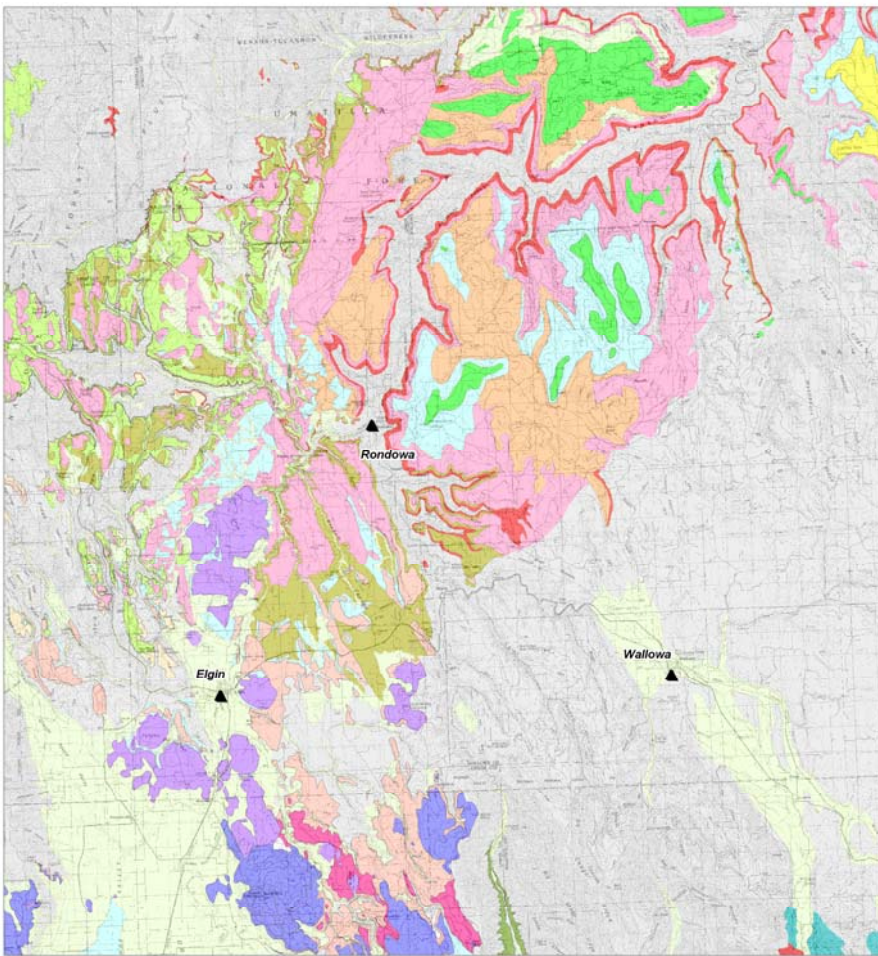
**TAS Plot for Powder River Volcanic Field Units,
Northeast Oregon**





**TAS Plot for Columbia River Basalt Units,
Northeast Oregon**





EXPLANATION

COLUMBIA RIVER BASALT GROUP

- Saddle Mountain Basalt
- Butler member
- Elephant Mountain member
- Eden member
- Umarella member

- Wapinitum Basalt
- Pawaka member
- Frenchman Springs member
- Lookingslaw member
- Dodge member

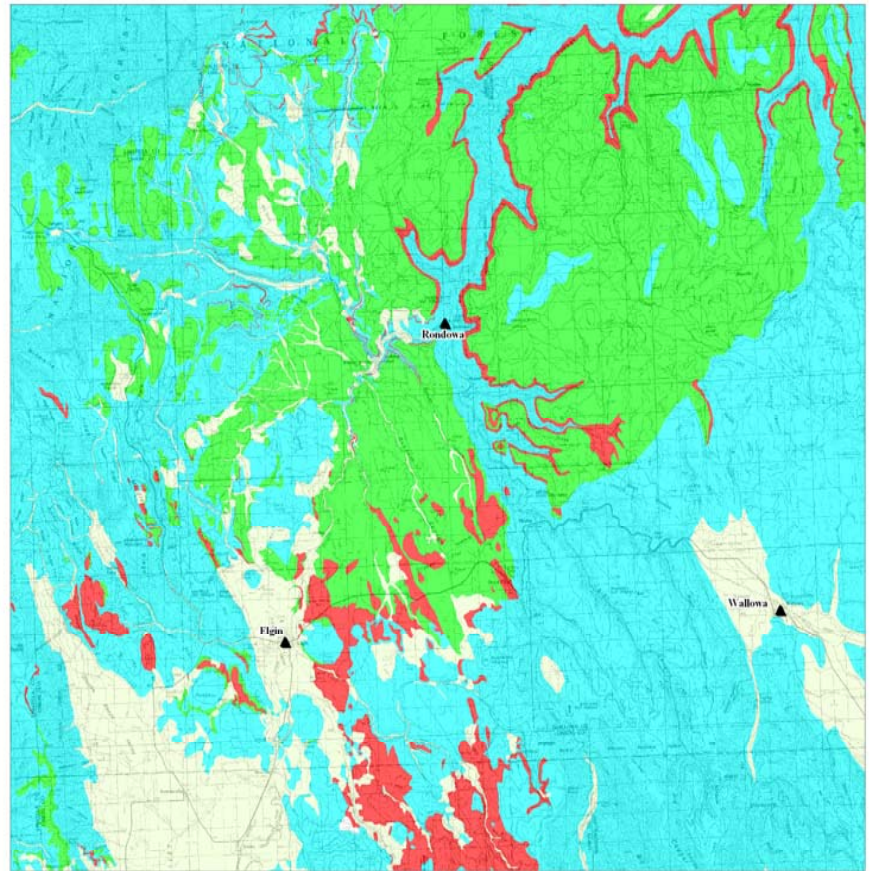
- Grande Ronde Basalt
- Inmaha Basalt

- Surficial deposits
- Sedimentary interbeds
- pre-Tertiary basement rocks

POWDER RIVER VOLCANIC FIELD

- Elgin Volcanics
- Rexault flows
- Andesite and dacite flows
- Olivine basalt flows

Conventional and Geochemical Landscape Geologic Maps

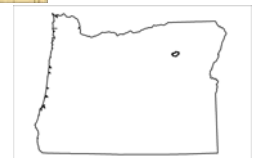
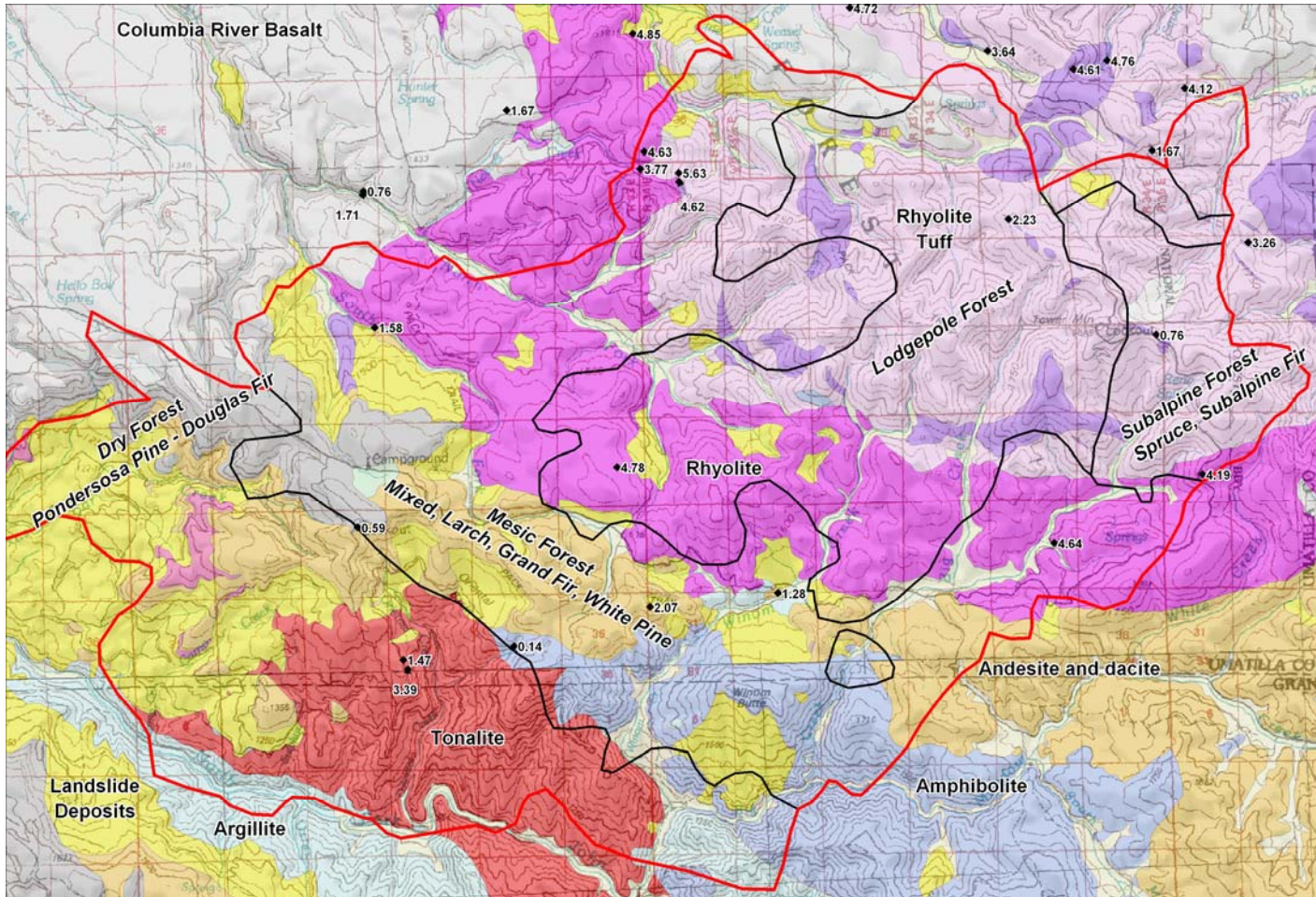


Expected potassium content of parent rock material

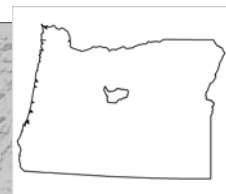
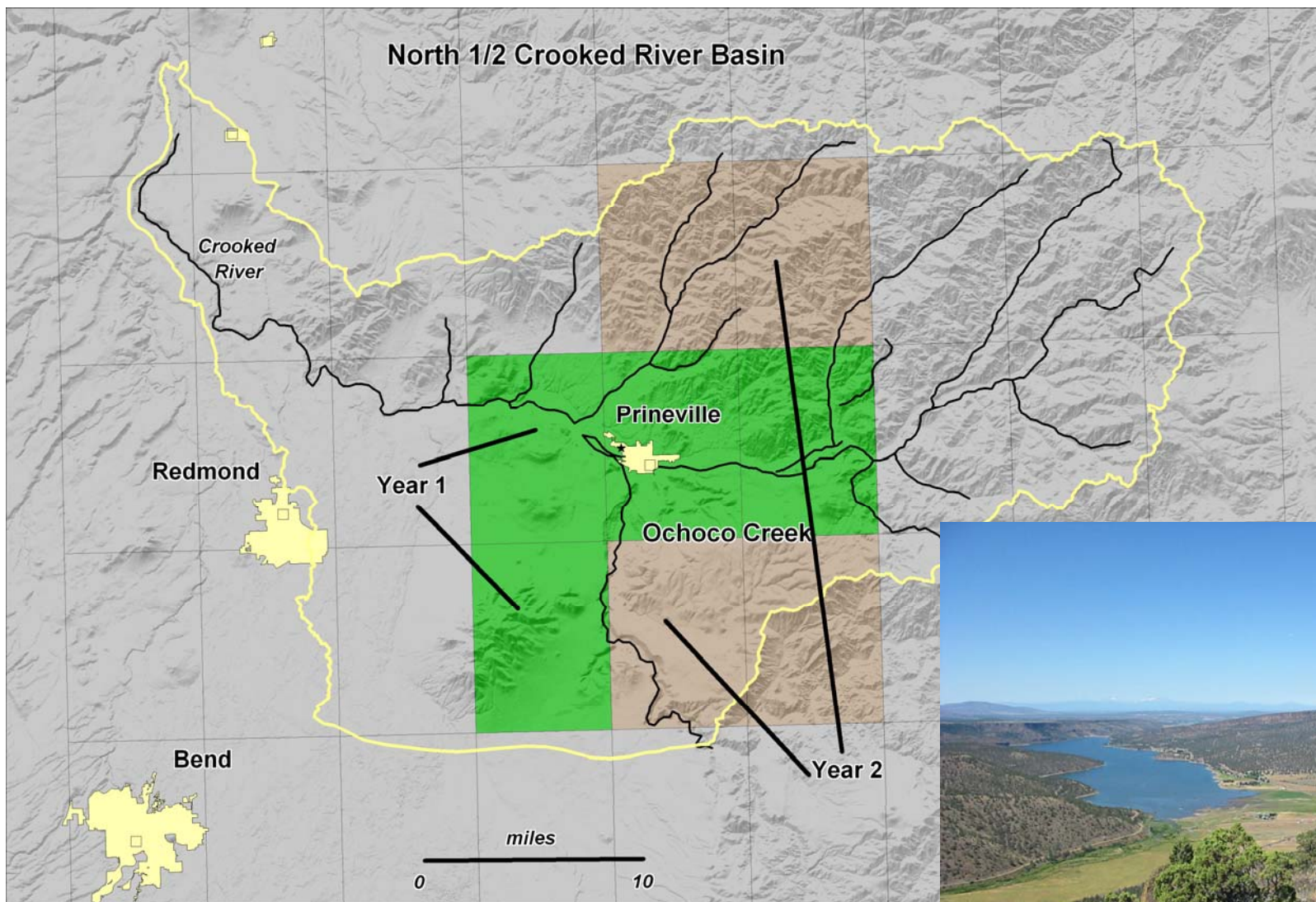
- K₂O ≥ 2.25 wt %
- 0.90 wt % < K₂O < 2.25 wt %
- K₂O ≤ 0.90 wt %
- K₂O not determined



GIS Analysis Using Vegetation, Geology, and Geochemistry – Tower Mountain Burn



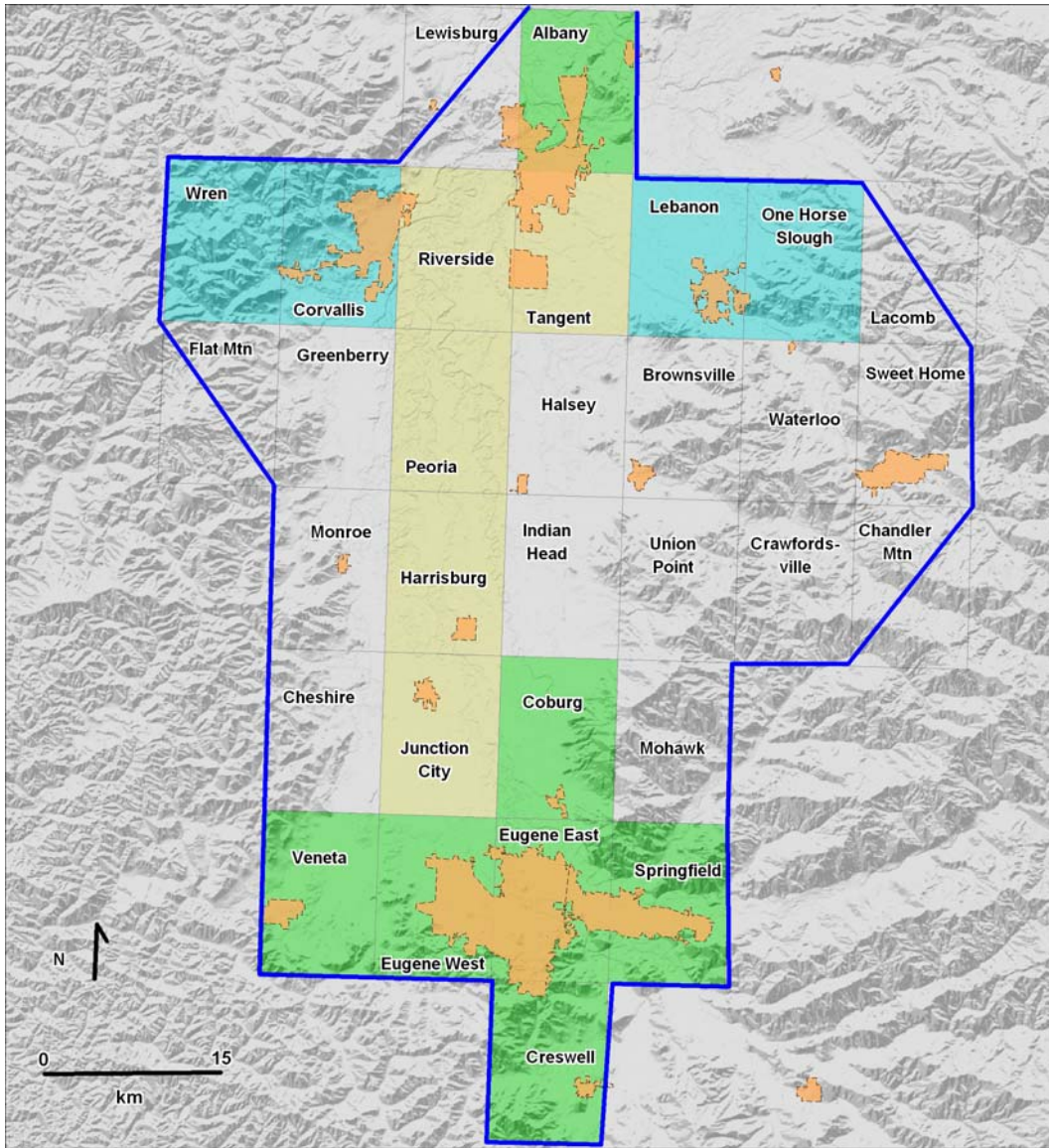
Status Report for the Prineville Mapping Project -Year 2 – April, 2007





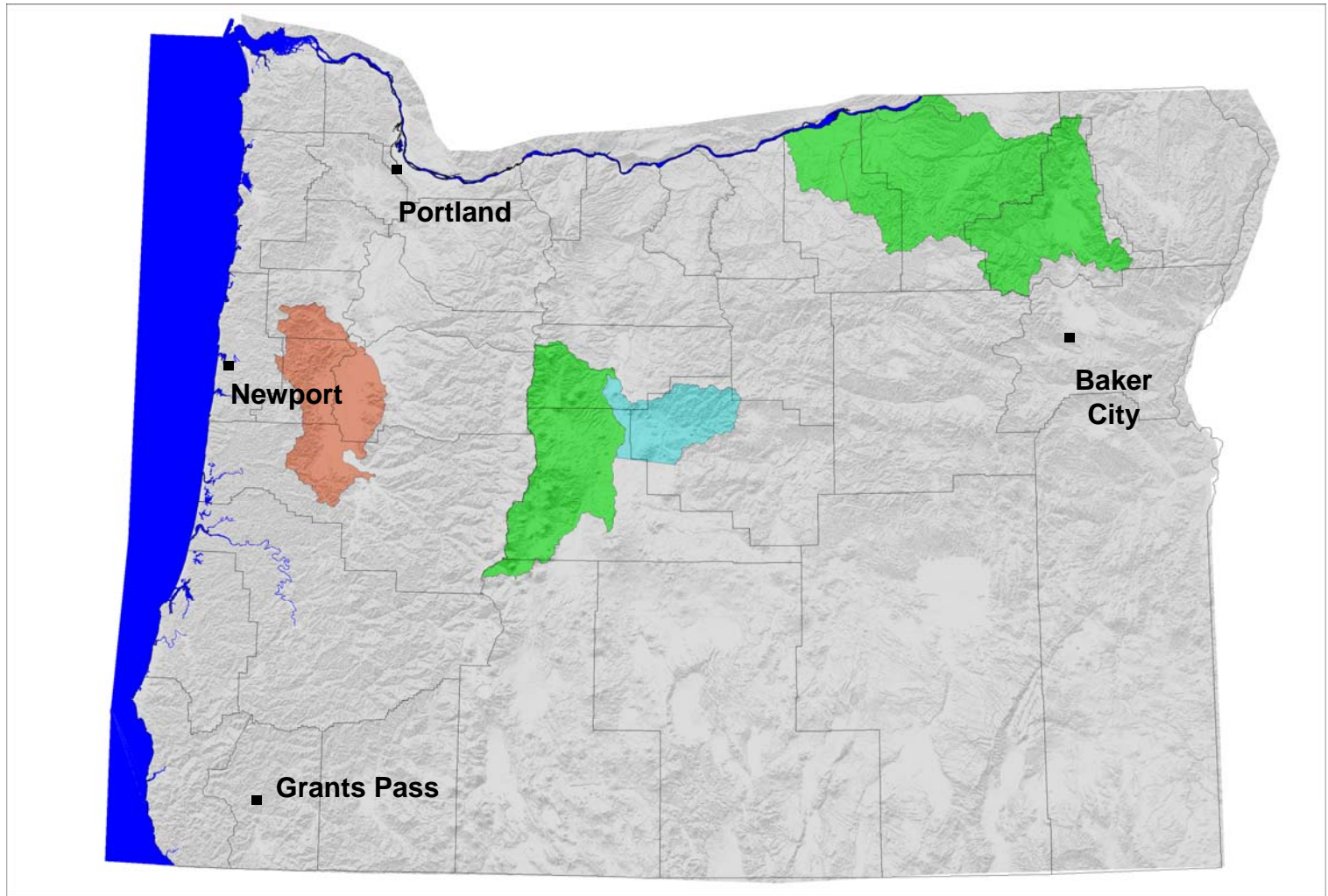
2007 Field Season Project Area

Middle Willamette Basin project area, with completed quadrangles in green; 2007 proposed quadrangles in blue





Oregon Department of Geology and Mineral Industries – Projects and Products for 2007



Eastern Oregon Field Office project areas – focus on basin studies

April 10, 2007 IFTNC