

**A BRIEF OF CENTER FOR FOREST
BIOTECHNOLOGY AND TREE IMPROVEMENT
YOGYAKARTA INDONESIA**

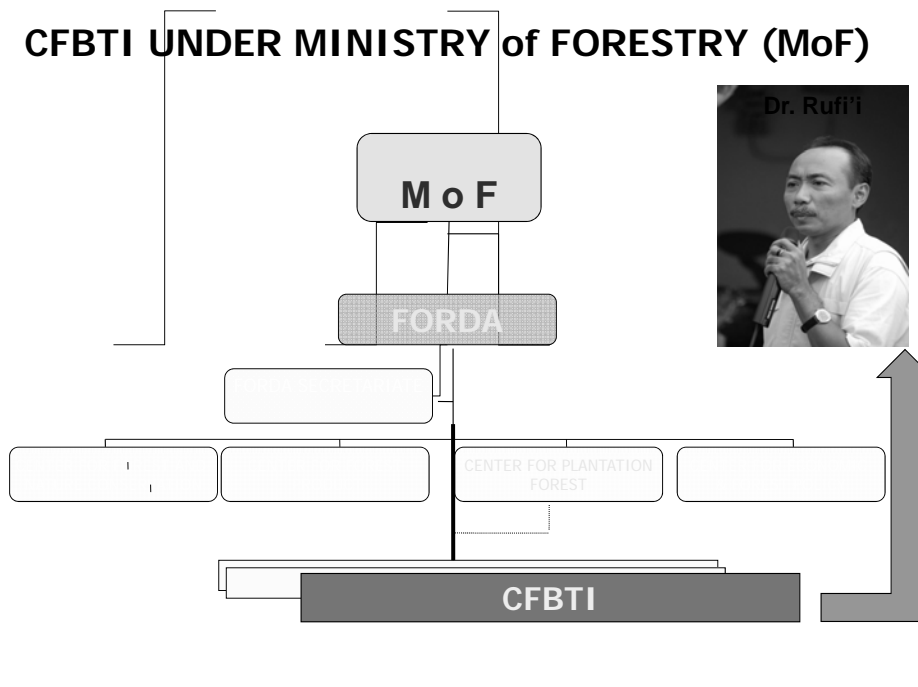
YOGYAKARTA CITY

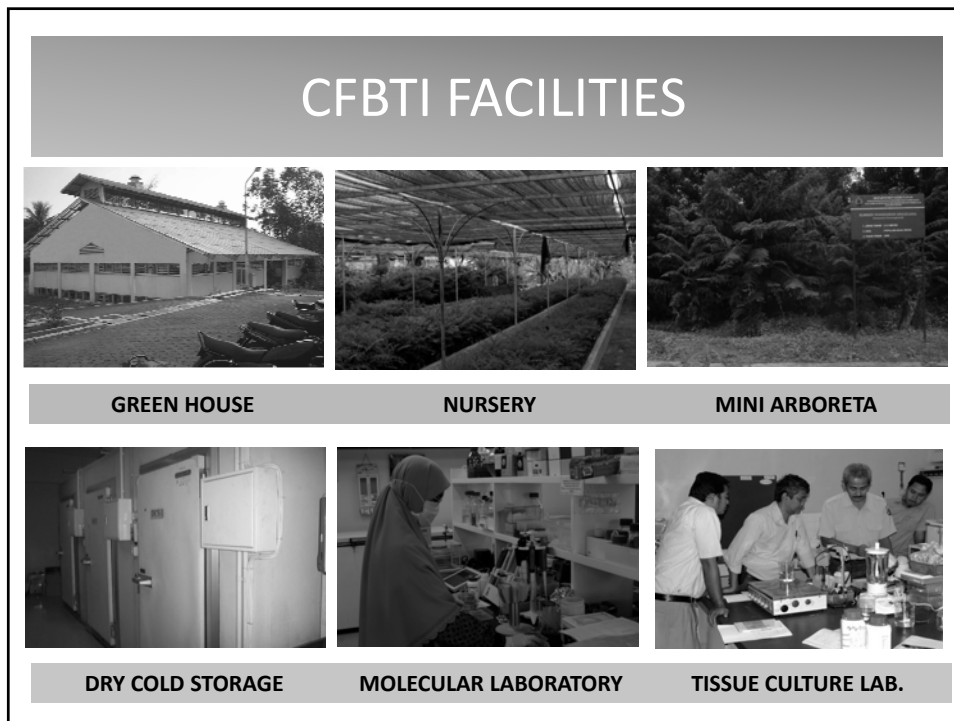
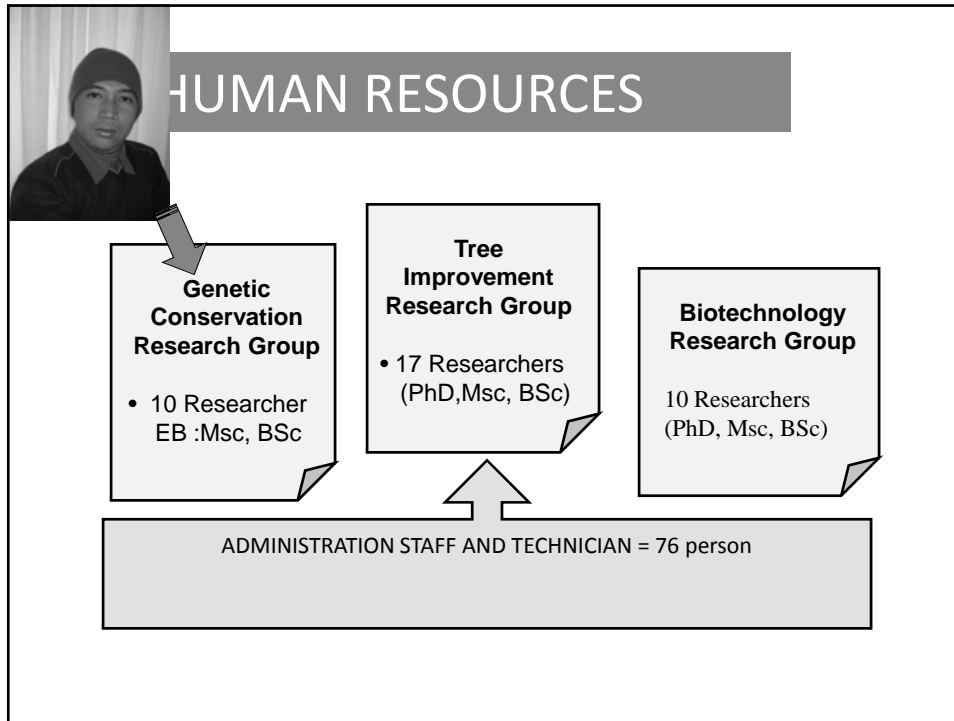


CFBTI HISTORIES

- 1985 – 1990 : Seed Production Unit under Directorate General of Land Rehabilitation
- 1994 : Tree Improvement Bureau under Forest Research and Development Agency (FORDA)
- 2000 : Center for Forest Biotechnology and Tree Improvement
- 2005 : Center for Forest Plantation
- 2006 : Center for Forest Biotechnology and Tree Improvement

CFBTI UNDER MINISTRY of FORESTRY (MoF)





RESEARCH PROGRAM

RESEARCH AREAs :

- MOLECULAR ANALYSIS & BIOTECH APPLICATION FOR PROPAGATION
- GENETIC CONSERVATION
- BREEDING TEST/TREE IMPROVEMENT

FORDA Grand Proposal:

INTEGRATED RESEARCH PLANNING (IRP)
IRP of CFBTI : FOREST TREE IMPROVEMENT

COMERCIAL WOOD

1. Teak (*Tectona grandis*)
2. Sengon (*Falcataria moluccana*)
3. Dipterocarpaceae (*Shorea spp*)
4. Tembesu (*Fragrae fragrans*)
5. Suren (*Toona sinensis*)
6. Merbau (*Intsia bijuga*)
7. Pulai (*Alstonia Scholaris*).
8. Nyawai (*Ficus variegata*)

PULP WOOD

9. Acacia mangium
10. A. crassicarpa
11. Eucalyptus pellita
12. Jabon (*Antocephalus cadamba*)
13. Binuang (*Octomeles sumatrana*)

FUEL WOOD

14. A. aulicuriformis
15. Kaliandra (*calliandra calothyrsus*)

ENDANGERED SPECIES

22. Eboni (*Dyospyros selebica*)
23. Ulin (*Eusydioxilon zwagery*)

FOOD, ENERGY AND MEDICINE (FEM)

16. Kayu putih (*melaleuca cajuput*)
17. Nyamplung (*callophyllum inophyllum*)
18. Mimba (*Azadirachta indica*)
19. Tengkawang (*Shorea stenoptera*)

PARFUME / AROMATHERAPHY (NONFEM)

20. Gaharu/Eagle wood (*Aquilaria sp*)
21. Cendana/Sandal wood (*Santalum album*)

ADAPTIVE SPECIES TO CLIMATE CHANGE

22. Identification of promising species for dry and marginal land.

Research Activities



Kajuputi Field Test at CJ



The Flower and Leaf



Oil Distillation



Breadfruit Clonal Test at CJ



Breadfruit



Raedy to Cook.



Sandalwood Field Test



Sandalwood Oil



Collaboration to local farmer



Teak Field Test, Central Java

